

Alameda Sunday School Head Is Given Furlough

ALAMEDA, Jan. 9—(Special)—T. Miki, popular superintendent of the Sunday School of the local M. E. Church, South, was given an indefinite leave of absence from his duty, at a recent meeting of the teachers.

Miki is retiring mainly because of his wife's illness. Rev. J. R. Fujii will hereafter assume the responsibilities, although the title will be retained by T. Miki.

Shozo Fujii was named secretary and Haruo Imura was chosen treasurer to succeed James Hanamura.

January 10, 1929 • Nichihei Shinbun



Tomoko Miki Funeral Service at JME Alameda, CA • November 1929

2399	393	409	Miki	Torao	Head	R	16.50		9m	9/6	48
				George K	Son				9m	9/6	17
				Isutomo	Son				9m	9/6	15
				Osamu	Son				9m	9/6	14
				Itsuko	Daughter				7	9/6	11

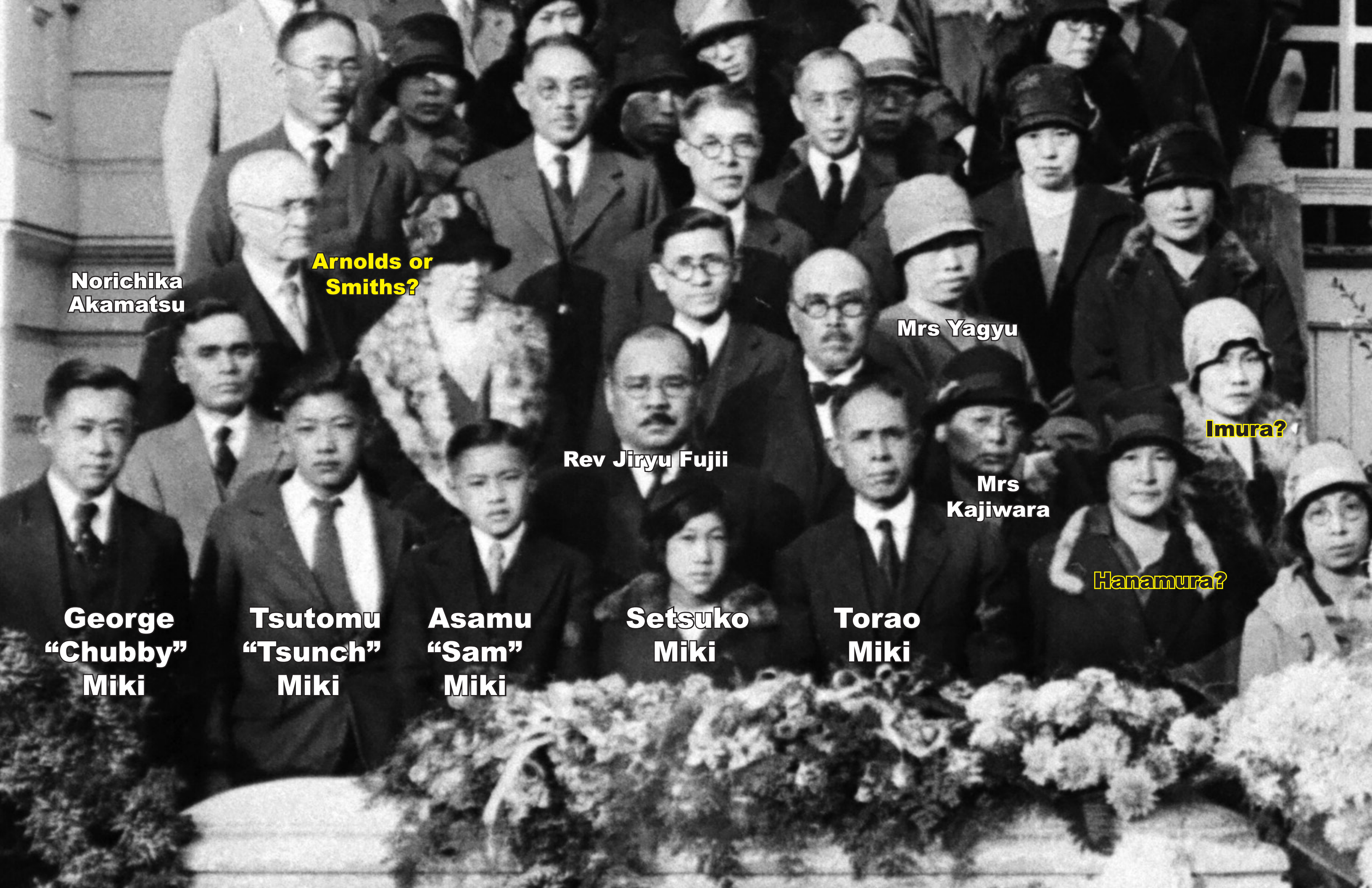
1930 U. S. census, no mention of Tomo

In 1929, Torao Miki was highly thought of at the Japanese Methodist Episcopal Church, South. He had done much to promote the Christian faith, preaching on street corners to wayward Alamedans. The Miki's were living at 2328 Buena Vista Avenue, across the street and a few doors down from the church.

In early January, Torao took a leave of absence as superintendent of the church school as his wife, Tomo, was ill. We don't know what that illness was, but it could have been tuberculosis, a disease that killed many Japanese in America and Japan.

Whatever the reason, she died on November 2 at age 41, leaving a burgeoning family behind. Just a few days before, on October 29, the stock market had crashed and The Great Depression would consume America for some 10 years.

Torao would die on October 13, 1949. Born in October 23, 1880, his ashes were returned to Fukui, Japan and it is presumed that's where the Miki family gravesite can be found.



**Norichika
Akamatsu**

**Arnolds or
Smiths?**

Mrs Yagyuu

Imura?

Rev Jiryuu Fujii

**Mrs
Kajiwara**

Hanamura?

**George
"Chubby"
Miki**

**Tsutomu
"Tsunch"
Miki**

**Asamu
"Sam"
Miki**

**Setsuko
Miki**

**Torao
Miki**



Tomo Miki Funeral at Japanese Methodist Episcopal, South, Church in Alameda, CA. November 1929