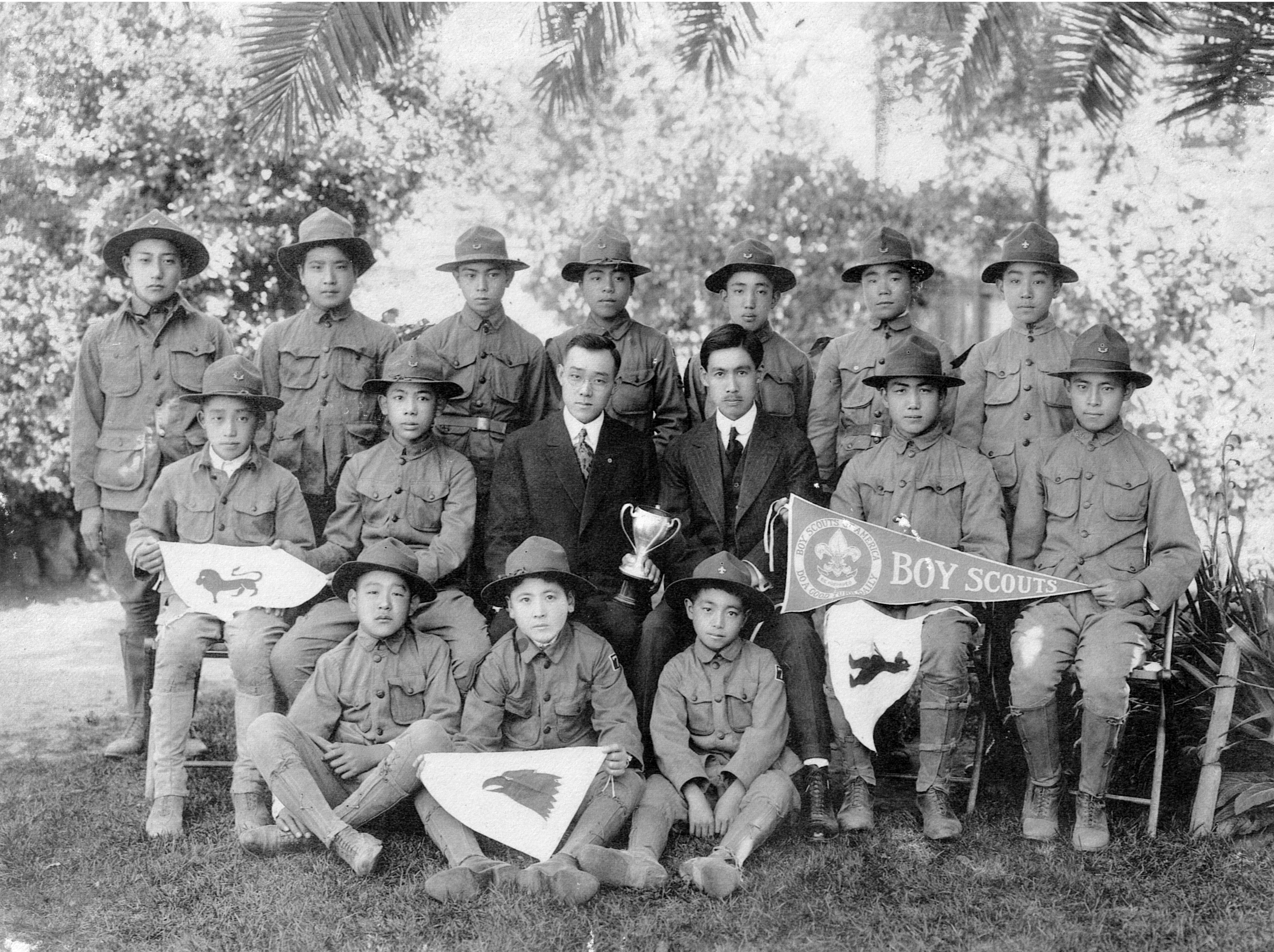


First Japanese Boy Scout Troop #7, Alameda, CA.



Troop 7 was founded by Dr. Hidemichi "Roy Akagi" (mid row, just left of center with glasses) and troop leader Taiji Mashihara. Earlier versions of this photo identified Mashihara as the man seated next to Hidemichi Akagi, but photos from the family do not match.

Under the leadership of Akagi and Mashihara, the Alameda troop included Yoshiyaki Katagiri, Hirose Otsuka, Mas Miyauchi, Scotty Tsuchiya, Junichi Iritani, Shozo Fujii, Dick Towata, Kazu Yamagami, Kiyoshi Nagai, Umeki Fukuzawa, Shizuto Kawamura, Kiyoshi Asada, Mitsuru Fukuzawa, Hiroshi Tawa, George Katagi and John Itow. 1918

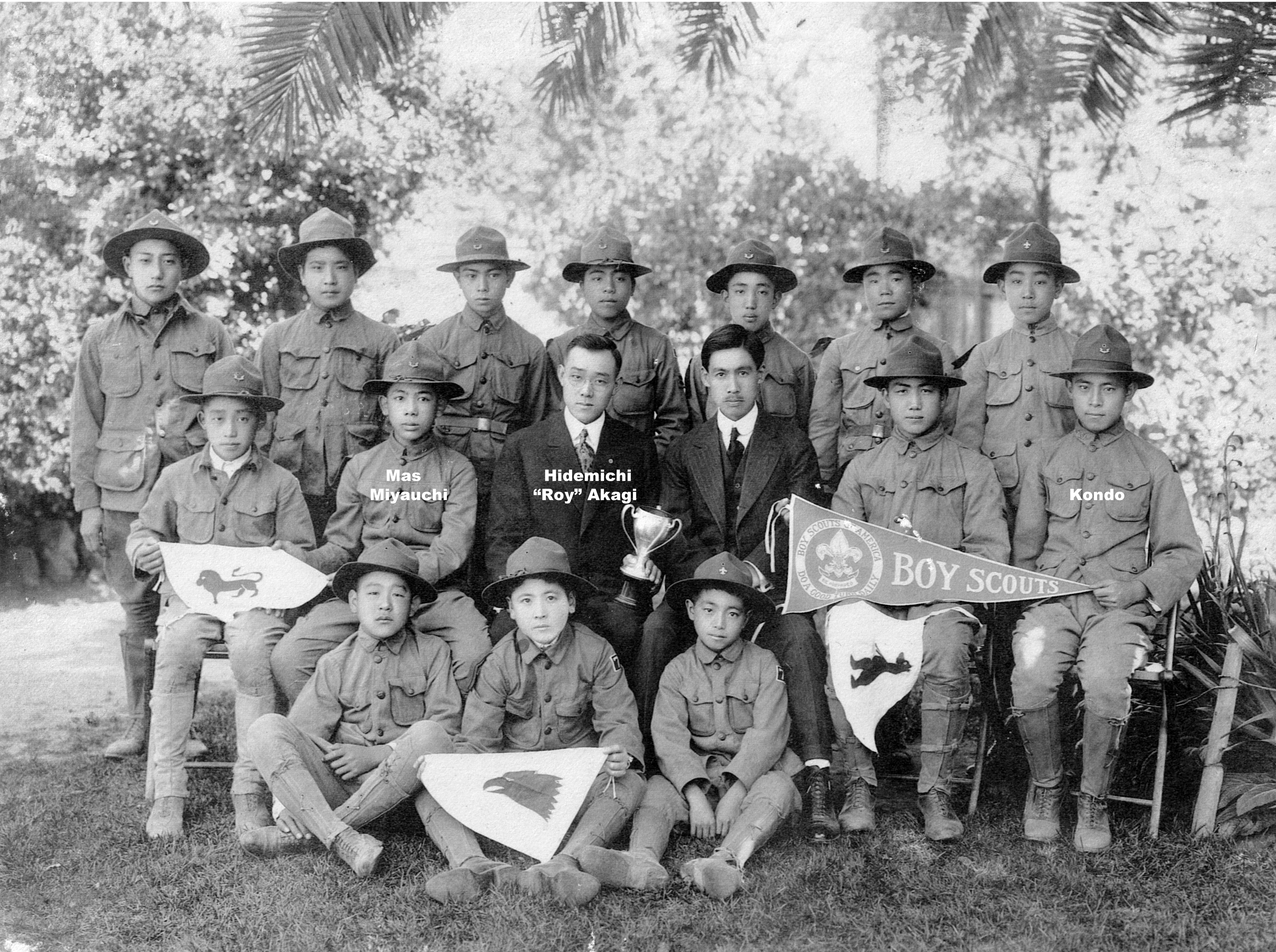
First Japanese Boy Scout Troop #7, Alameda, CA.

Saitaro "Richard"
Towata

Scotty
Tsuchiya

Hajime "Henry"
Kondo

Shizuto
Kawamura



Mas
Miyauchi

Hidemichi
"Roy" Akagi

Kondo

Harano

Troop 7 was founded by Dr. Hidemichi "Roy Akagi" and troop leader Taiji Mashihara. Earlier versions of this photo identified Mashihara as the man seated next to Hidemichi Akagi, but photos from the family do not match.

Under the leadership of Akagi and Mashihara, the Alameda troop included Yoshiyaki Katagiri, Hirose Otsuka, Mas Miyauchi, Scotty Tsuchiya, Junichi Iritani, Shozo Fujii, Dick Towata, Kazu Yamagami, Kiyoshi Nagai, Umeki Fukuzawa, Shizuto Kawamura, Kiyoshi Asada, Mitsuru Fukuzawa, Hiroshi Tawa, George Katagi and John Itow. 1918