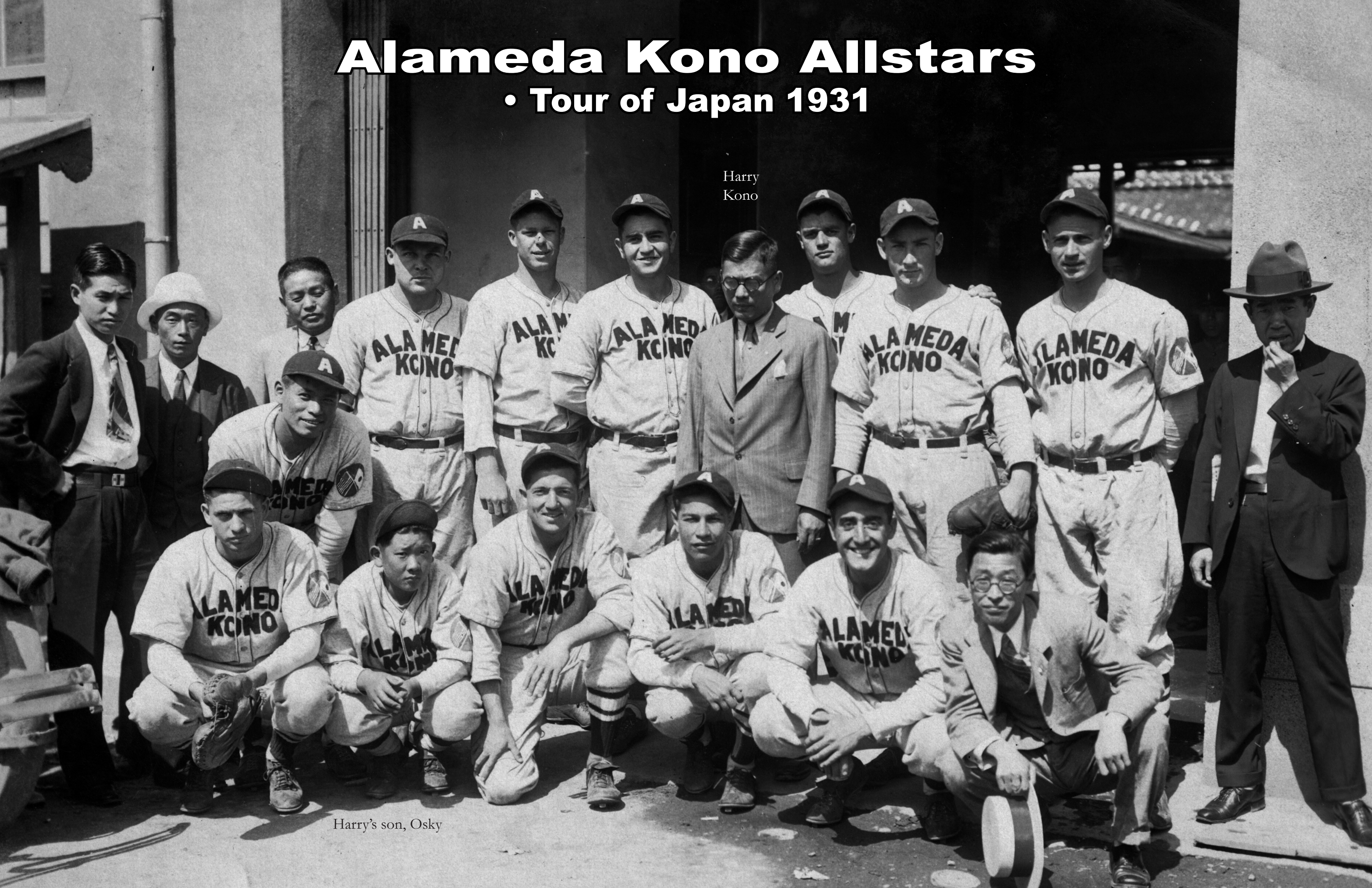


Alameda Kono Allstars

• Tour of Japan 1931

Harry
Kono



Harry's son, Osky

Kono Team To Sail For Japan, March 5

ALAMEDA, Feb. 23—The roster of the "Alameda Kono Baseball Team" which is leaving here on March 5th on the Asama Maru to invade Japan, has been announced as follows:

Pitchers—Ernest Mattos, Denny Campbell, Lefty Morck, Pete Sunseri, and Clifford Mattos.

Catchers — Nick Carter and Charles Curran.

First Baseman—Ray Sabine

Second Baseman—Alex White

Third Baseman—Joseph Asaro

Shortstops—George L. French and Joe Mahan.

Left Field—Alden Godbler

Center Field—Salvador Zulaica

Right Field—John Nelson.

Coach—Oscar Smith

The manager of the team is he manager is Mr. Harry Kono, local florist, who will be accompanied by his wife and son.

The New World
February 24, 1931

Note that the team consists of all
Caucasian ballplayers

Alameda Nine Wins 18 Games in Japan

The Alameda Kono nine, a baseball team organized by Harry Kono of Alameda from local semi-pro and former high school stars, which is touring the Orient in an exhibition barnstorm, has won 18 of its first 26 games, according to a letter received here from Charlie Curran by his mother, 2224 California street, Berkeley. Following are the scores:

Alameda Kono 6, Meiji 4.
Alameda Kono 8, Yokohama 4.
Alameda Kono 13, Tokyo Club 4.
Alameda Kono 4, Meiji 8.
Alameda Kono 11, Yokohama 8.
Alameda Kono 3, Hosei 1 (11 innings).
Alameda Kono 6, Waseda 3.
Alameda Kono 4, Waseda 10.
Alameda Kono 7, Meiji 8 (10 innings).
Alameda Kono 9, Keio 7.
Alameda Kono 1, Kosho 7.
Alameda Kono 16, St. Paulo 6.
Alameda Kono 3, Nihon 5.
Alameda Kono 3, Nihon 5.
Alameda Kono 4, Meiji 5 (10 innings).
Alameda Kono 4, Meiji 8.
Alameda Kono 4, Meitetsu 6.
Alameda Kono 10, Nagoya 4.
Alameda Kono 10, Meiji 1 (Frosh).
Alameda Kono 5, Los Angeles Nippons 3.
Alameda Kono 11, Shundai Club 3.
Alameda Kono 14, Kwansai 2.
Alameda Kono 18, Kobe 3.
Alameda Kono 4, Heian 0.
Alameda Kono 3, Dooshisha 1.
Alameda Kono 15, Meiji (Frosh) 14.
Alameda Kono 11, Meiji (Frosh) 9 (13 innings).

1931

2 California Ball Teams Winning in Japan; L. A. Nippons Down Meiji 6-4; Alameda Nine Defeats Hosei 3-1

[Special to Japanese American News]

TOKYO, Mar. 21—The Alameda baseball team defeated a team of University of Meiji graduates by a score of 6-4, and the L. A. Nippons held the Hosei alumni to a 3-1 score in To-

kyo, March 20. Harry Kono is the manager of the Alameda team and M. Igasaki is managing the L. A. Nippons. Pete Kondo is captain of the L. A. team.

Nichibei Shinbun
March 22, 1931

L.A. NIPS AND ALAMEDA NINE MEET IN JAPAN

YOKOHAMA, Apr. 26—A grand and glorious reunion with aching handshakes in every corner of the baseball diamond in Yokohama took a greater portion of the afternoon, according to reports here today, when the Los Angeles Nippon nine now touring Japan met in a game with the Alameda team recently.

The Alameda baseballers are under the care of Harry Kono, manager of the Alameda Taiiku-Kais. The present team, traveling with Kono, is composed of all-star Americans.

The New World • April 27, 1931

KONO TEAM TO RETURN

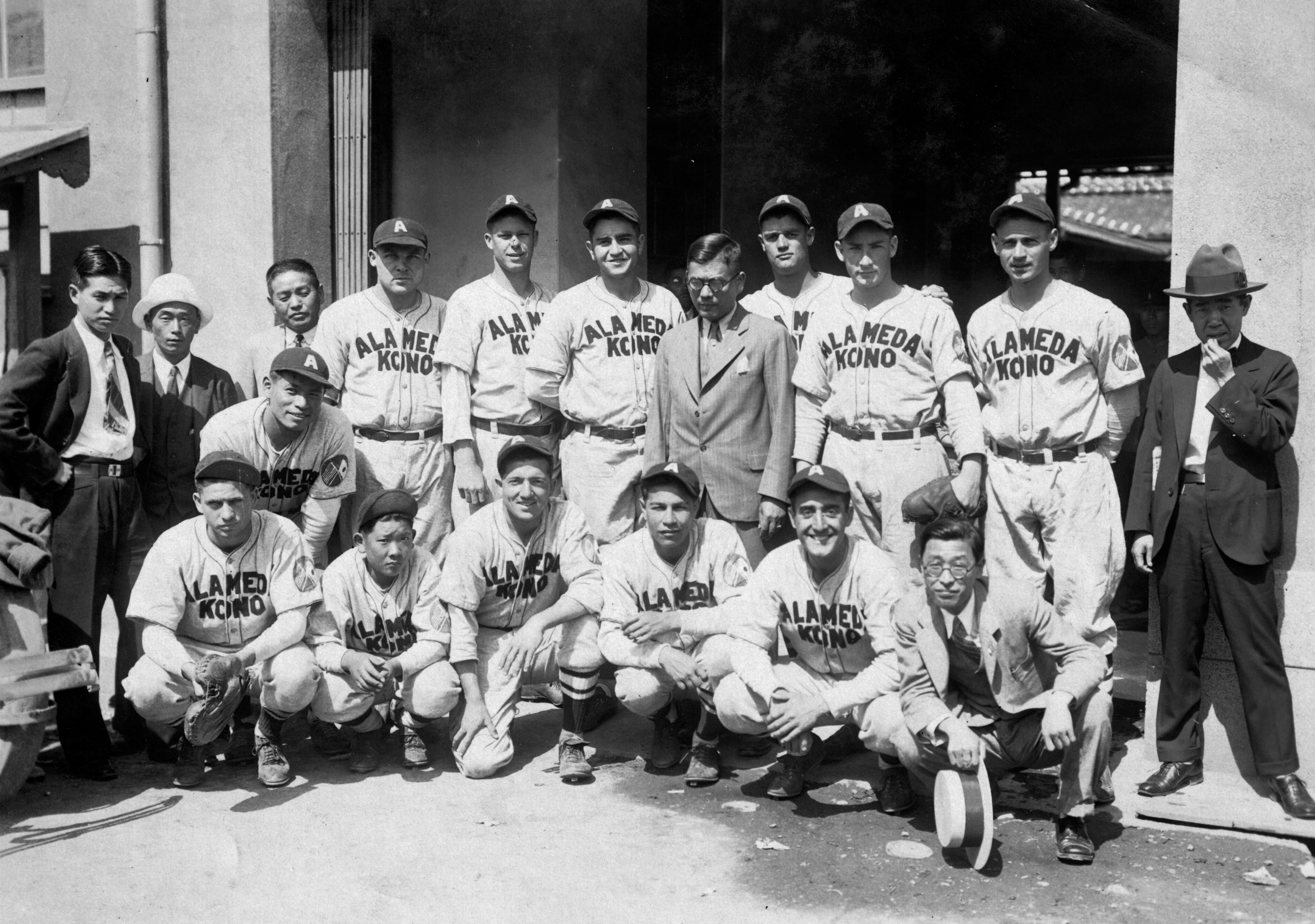
Alameda Team to End Barnstorming Tour of Orient

[Special to Japanese American News]

ALAMEDA, July 10.—Harry Kono and his baseball team which is now making a barnstorming tour of the Orient is expected to be back in California on July 29, it was learned from a letter received by Mrs. Kono here yesterday. The Alameda nine, composed mostly of American players, is scheduled to board the N.Y. K. liner Tatsuta Maru at Yokohama on July 16 to sail for San Francisco.

It was also learned that the team is now sojourning in Tokyo after its recent return from a trip to Manchuria. Kono's boys are expected to clash in a game with the Meiji university team at Meiji Jingu stadium in Tokyo on July 12 or 13.

Nichibei Shinbun
July 11, 1931



Kono Allstars, run by Hikotaro "Harry" Kono (center of second row in suit). Front row kneeling second from left, with bill turned up is Osky Kono, his son.
Photo by Oita newspaper company, Japan