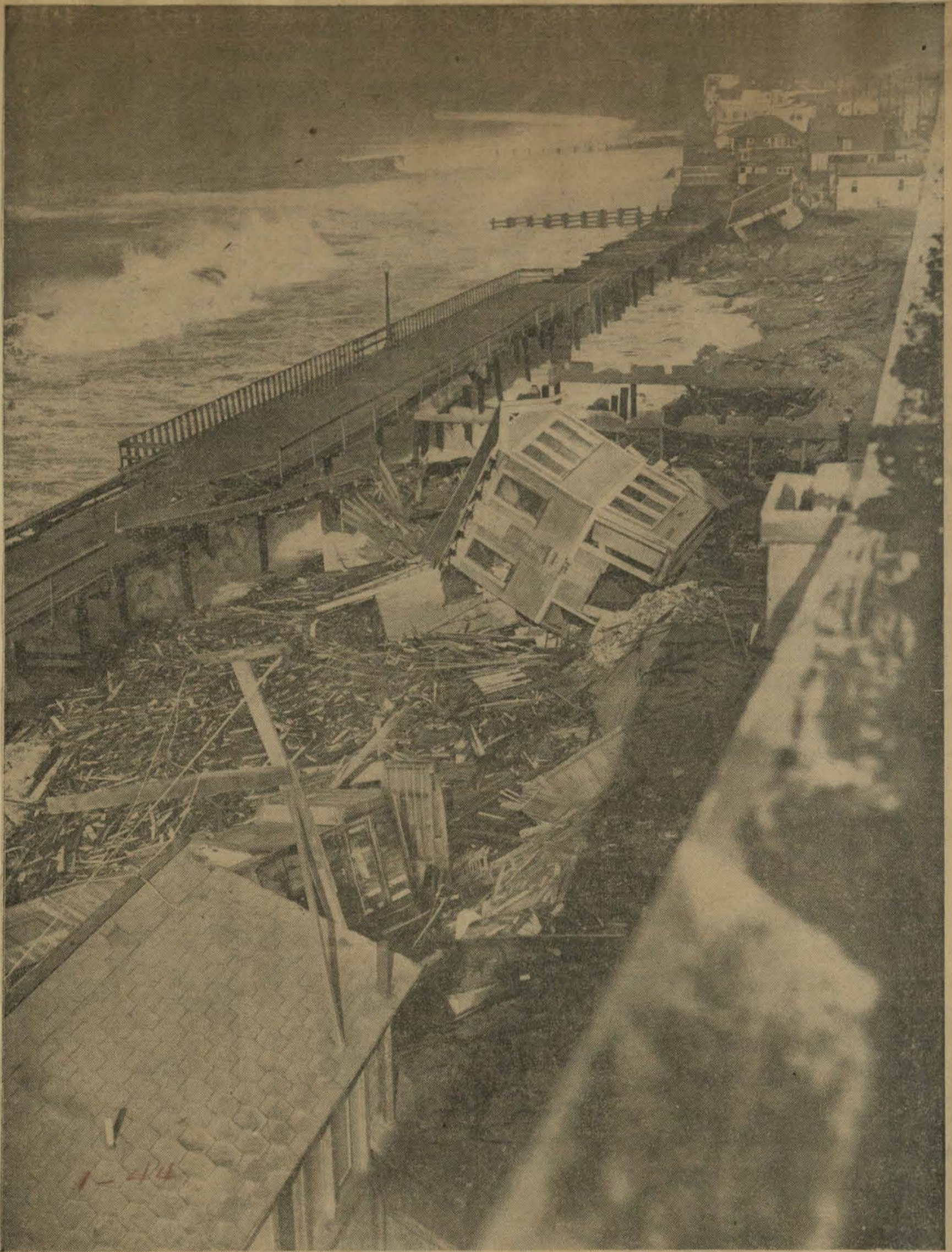




—Daily News photo.
WATER stood hub-deep over a large area in the vicinity of 220th st. and Avalon Blvd. early today. In some sections defense workers were stranded when their cars were unable to ford streams and lakes that blocked roadways.



1-2/4
THIS VIEW, looking north along the wrecked Strand in Redondo Beach, shows how a wild, wind driven surf battered shoreline houses and apartments. Between 6 and 9 a. m. today at high tide, five

apartment houses and three single family dwellings were undermined, sucked into the surf and smashed to splinters. More than 100 families, left homeless, are being cared for by the Red Cross at the Redondo Methodist church. (Story on Page 1).

THE IDEAL LINE
To Duplicate Order
No. 11B
MADE BY
The J. L. Hanson Co.
CHICAGO, U. S. A.

