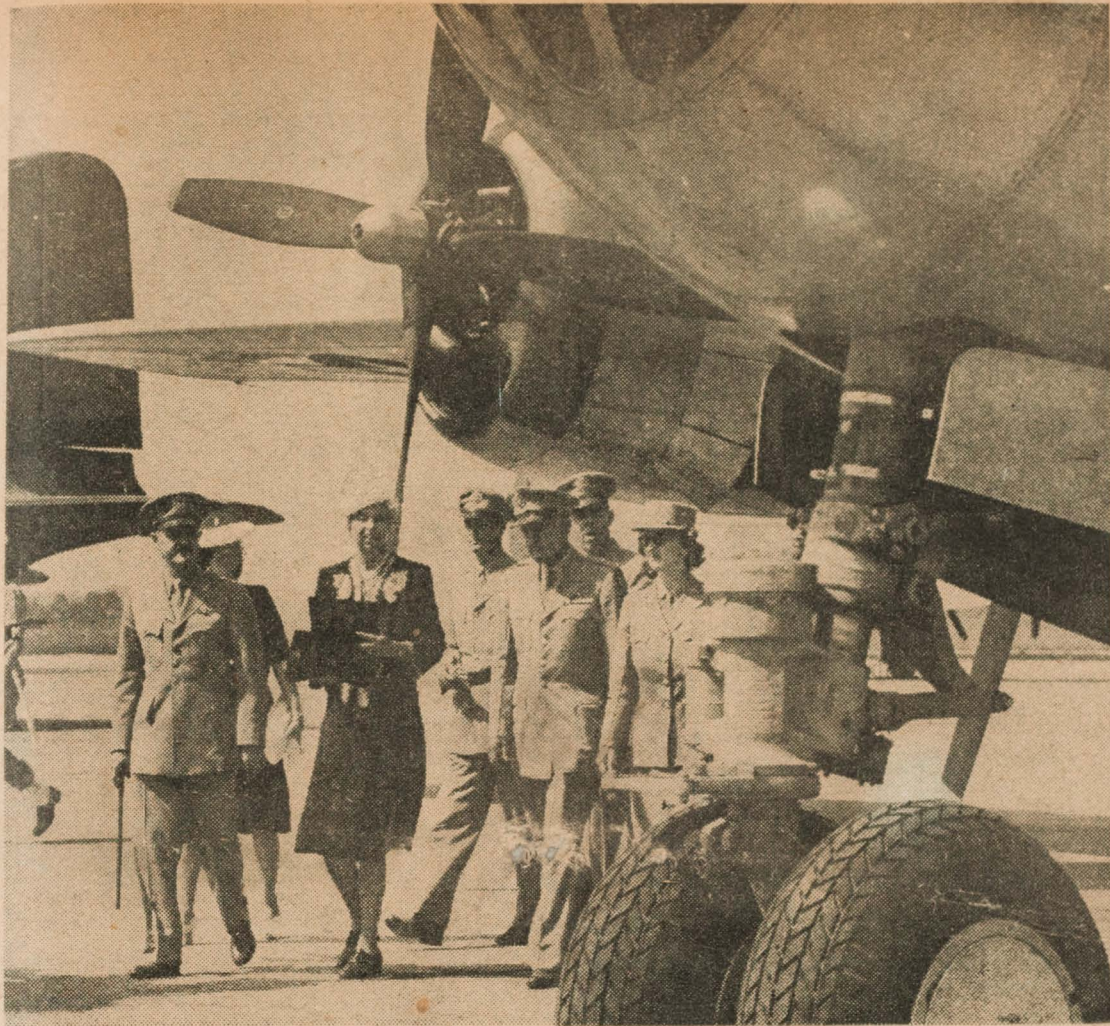


Mrs. Roosevelt Lunches with AirWACs



—Photo by AAF Materiel Command

MRS. ROOSEVELT VISITS WRIGHT FIELD. A feature of the visit of Mrs. Franklin D. Roosevelt, wife of the President, to AAF Materiel Command headquarters at Wright Field, Ohio, was a view of the mammoth planes on the flight line. Mrs. Roosevelt toured the laboratories of the Materiel Command in company with Maj. Gen. Bennett E. Meyers (at left), Brig. Gen. Franklin O. Carroll, Chief of the Command's Engineering Division, and Capt. Barbara Euler, Commanding officer of the WAC Detachment, then had lunch with AAFMC AirWACS.

Chinese Wac Wants Duty in Asiatic Zone

FT. BENNING, Ga.—Hoping that she can put her knowledge of the Chinese language and people to good use for the American war effort, Pvt. Bertha Chin, of WAC Detachment One, The Infantry School, has applied for service in the Asiatic theatre. One of her brothers is already overseas with the Signal Corps, another is serving with the Navy, while her third brother, who lived in China, has not been able to communicate with her since the outbreak of the war. The rest of her family is at work in defense plants and in the American Red Cross.

Pvt. Chin has spent most of her life—except for four years in Hong Kong—in the Chinese settlement in Seattle, Wash. Not only are all her young friends of Chinese descent now serving with the armed forces, but she has several acquaintances from the neighboring Japanese-American community who are preparing to go on active duty with the Women's Army Corps. All of the younger generation of both the Japanese and Chinese communities, Pvt. Chin says, have never considered themselves as being anything but thoroughly American.

*Bertha was with us at Snelling...
...1945...*