

MIS Administrative Personnel - Christmas 1944



HEADQUARTERS COMPANY



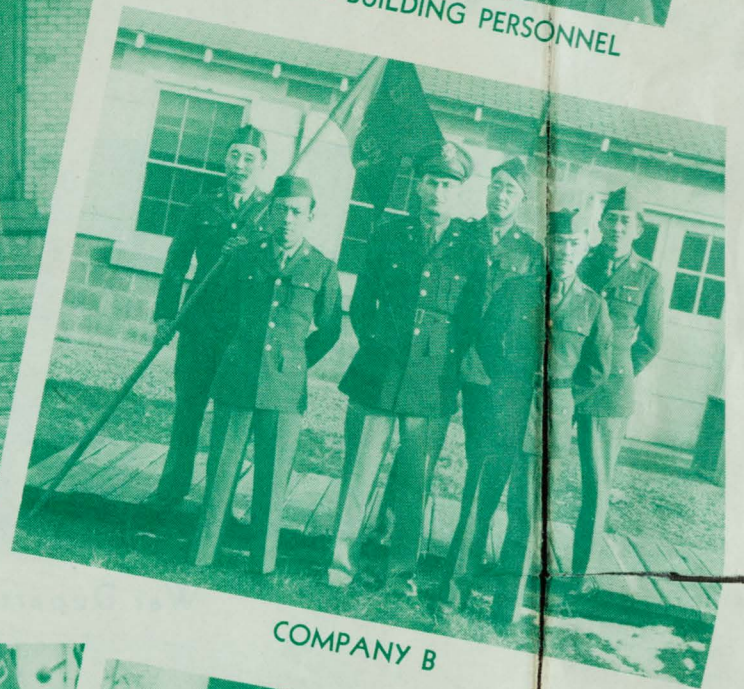
MIS HEADQUARTERS BUILDING PERSONNEL



COMPANY A



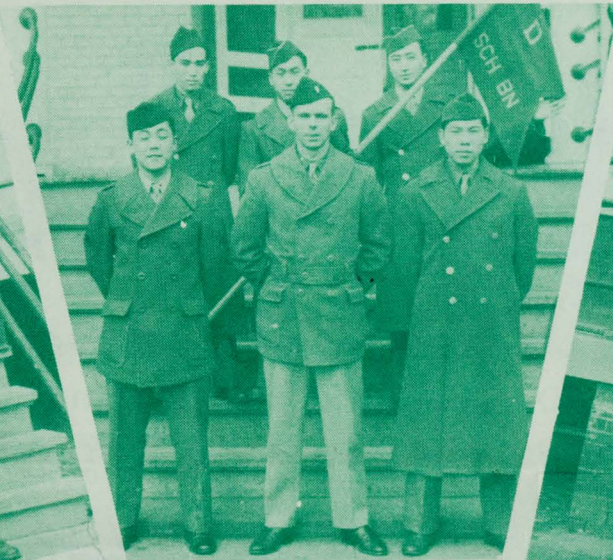
COMPANY I



COMPANY B



COMPANY C



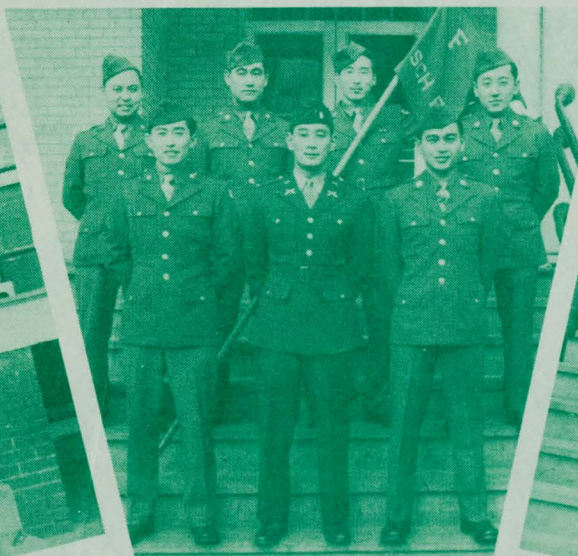
COMPANY D



COMPANY G



COMPANY H



COMPANY F



COMPANY E

Post Personnel - Fort Snelling - Christmas 1944



Officers of Supply Division



Post Headquarters Officer Personnel



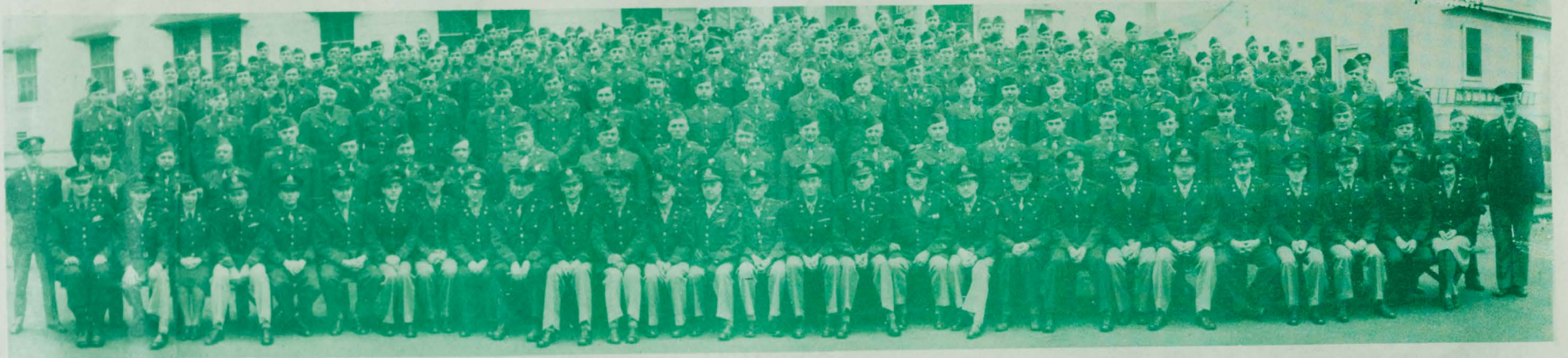
Finance Office U. S. Army



Medical Branch WD Personnel Center



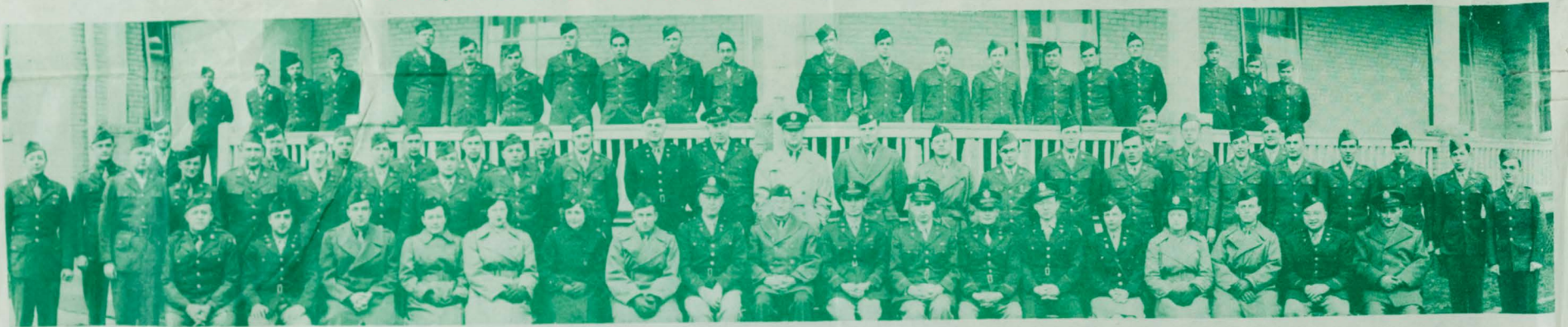
Medical Department (VS) 1749 SU Station Complement



War Department Personnel Center SCU 1775



Headquarters Detachment SCU 1749 Station Complement



Station Hospital Medical Detachment 1749 SU Station Complement



Military Police Detachment District Number 1 SCU 3748