



## *12th grade*

FRONT ROW • LEFT TO RIGHT • LETA KAWAJIRI • EDNA ITO •  
KUMEKO AKIYAMA • NOBUKO HANZAWA • KAZUKO INOU-  
YE • MISS LEFLAR *adviser* • TOSHIO MAKINO • DON HISAKA • TO-  
SHIO MATSUD • ROY KANEDA • SECOND ROW • KAZUE AKU-  
TAGAWA • LOUISE GOMI • KAZUMI TAGASHIRO • MARGA-  
RET KIKUCHI • RUBY HAMASAKA • MILDRED DOTE • SHIGEKO  
TAGASHIRO • ALICE NAKAO • KONAMI FUJITA • TOSHIYUKI FUJI-  
SHIGE • HENRY HIRATA •



## 12th grade

FRONT ROW • LEFT TO RIGHT • TOSHIMI TERAOKA • EMIKO TERADA •  
 NELLIE UTSUMI • ALICE OKAMURA • KIMI TAMURA • MASATO YA-  
 MAOKA • FRANK SHIMAZAKI • NOBUYUKI TANIMOTO • YUKIO SHI-  
 MIZU • BACK ROW • TAKEO SHIBATA • MASAYOSHI TANJI • YOSHIKO  
 TOMIYAMA • HIROKO YASUTAKE • YOSHIMI ANDO • EMIKO TAGU-  
 CHI • MISS COOPER adviser • YOSHIKO TOMINAGA • MARIAN YAMAMO-  
 TO • DOBOTHY OGATA • TOSH MIYAMOTO • SAM MURAKI •



## 11th grade

FRONT ROW • LEFT TO RIGHT • SHIZUYE ICHIKI • ALICE HAGIWARA • EDWARD IWAMIYA • AMY IWICHI • MISS CAMPSTER <sup>adviser</sup> • HARRY FUJIOKA • KENJI KAJIYA • MARY IGE • YOSHIE JINDA • SECOND ROW • TOM ITO • OSCAR KAMEMOTO • JANE ASAWA • MARY HARADA • AYAKO FUJIMOTO • MIYOKO ICHIKI • NAGAKO HORIGUCHI • MARIENNE IRIYE • KIYOKO HATASHITA • KYOKO FUJIYAMA • MAY KAMIBAYASHI • TOSHIO AKITA • STEPHEN DOHI • ROW THREE • JACK FUKUMOTO • ROLAND HAGIO • YUTAKA HIROMOTO • KIYOSHI HOJO • KIYOSHI FUJIMOTO • SHIG ITO • GEORGE HAYASHIDA • TETSUO HAYASHI • BILL IKEMOTO



# 11th grade

FRONT ROW • LEFT TO RIGHT • NORIKO NAKATANI • NAMIYE NAKATANI • FUMI-  
 KO NAKANISHI • RUBY MATSUHIRO • YONEKO KIMURA • MISS JAMISON<sup>adviser</sup>  
 MIYAKO KOSAKA • IKU NAKAO • KIYOKO KAMIDDI • TOMIKO NAKAMOTO • SECOND  
 ROW • WALTER MATSUI • TOM KITAGAWA • SEIGO KOTAKE • HARUE NAGAO-  
 KA • TOSHIKO NAKANO • SHIZUKO NAKAOKA • SACHIKO MORIKAWA • EMIKO NA-  
 GAI • CHIYOKO KANEGAE • MASAO KINOSHITA • LINDY KUSUMOTO • THIRD ROW  
 SHIGEO MITANI • BOB IGE • JACK KIMOTO • HENRY MORI • HENRY NISHIKAWA •  
 GEORGE NAKAO • YOSHIO KAMITA • AKIRA NAKAGAWA • SHIGEMI KAWAMOTO  
 BILLY KINOSHITA • TOMIO MURANAKA



## 11th grade

FRONT ROW • LEFT TO RIGHT • NATSUYE OKAZAKI • HANNAH NISHIMOTO •  
BESSIE NISHIMOTO • TOSHIO IKE • MISAO SHIOZAKI • MRS.  
PRICE *adviser* • MASARU SHIBATA • YUTAKA SHIRAIISHI • TERU-  
KO OTSUBO • SECOND ROW • JANE OKAZAKI • TOKIKO OTANI •  
DOROTHY NISHIMA • HOSHIKO OTOSHI • EVELYN SHIMIZU •  
HATSUMI SAKURAI • FUMI OKINO • JEAN OKUNO • SALLY  
OSHIMA • CHISATO OKAYAMA • WILLIAM SHIMAMOTO • ART  
OKUGU • THIRD ROW • FRANK SHINODA • FRED SATO • TOKUO  
NITTA • SHIG SATO • FRANK SATO • SHU OZAWA • HENRY OGA •  
TOM SAKODA • JUNJI SASAKI • HENRY SAKAKURA • GEORGE SA-  
KAMOTO •



## 11th grade

FRONT ROW • LEFT TO RIGHT • MIÉ YAMAMOTO • SHIZUKO YAMAGUCHI •  
HIDEKO UMINO • SMOKIE SUGII • MISS SIMPSON adviser • TAK YAKURA •  
TOSHIO TAKAHASHI • RITSUO YAMANAKA • JOE TODA • SECOND ROW •  
MAYE TANABE • BERNICE YAMAGUCHI • YUIKO YAGUCHI • AMY TSU-  
TSUMI • YUKA TODA • TERUMI TAMURA • MIZUYE YAMADA •  
MARY YOSHIDA • HISAKO TANJI • SHOJI TABUCHI • THIRD ROW •  
KEIZE TOYOFUKU • TAKESHI TAHARA • MASAIKI YOSHIKAZI • JIM  
TANAKA • GEORGE SUGIMOTO • TOMU YAMASAKI • YUKIMA-  
RU SUGIMOTO • JOHN YAKAHI • CHOJI SUGITA • MAS WATA-  
NABE • HARUTO TAKATA •



## 11th grade

FRONT ROW LEFT TO RIGHT • RUBY MASUOKA • EDITH ANN  
 GRISWALD • CHRISTIE OGAWA • JANE KAWANA • MISS JACKSON adviser  
 CAROLYN SUZUKI • NANCY TOYAMA • TERRY MAYEMURA • YASUKO  
 HONDA • AKIKO YANOKAWA • SECOND ROW • TOMIYE ISHII • JACK  
 AIKAWA • GEORGE FUJII • ROY OSHIMA • TATSUO IWAHASHI •  
 FREDERICK MAYEDA • JACK NAKASHIMA • CASEY SAKATA • HIROSHI  
 KIKAWA • THIRD ROW • HIROSHI IGE • TAD TAKAHASHI • JIM  
 OTO • GEORGE TAKAHASHI • CLARENCE TANAKA • GEORGE  
 YANAGIDATE • TAKASHI TOKUNAGA • JIMMY YAMAMOTO •  
 YOSHIKAZU SAKAKUBA • KENJI TAKETANI •



# 10th grade

FRONT ROW • LEFT TO RIGHT • KIKUO HAYASHI • ANDREW KAMBARA • KOJI KAMBARA • BILL  
 ASAWA • MRS. BEASLEY adviser • FUJIKO KIKUCHI • FRANCES KAWAJIRI • MICHIKO FUJII  
 CHARLOTTE HAMADA • YUKO HANZAWA • SECOND ROW • JEAN HATTORI • SHIGEKO HA-  
 GIO • ALICE IKEGAMI • AGNES AWAYA • GRACE HATTORI • YOSHINO KAWAGUCHI • TA-  
 ZUKO KAWAHATA • HARUYE FUKUMOTO • MARY FURUKAWA • SADAKO IGE • THIRD  
 ROW • YOSHIO KAWAI • HIRO ISHIDA • TED KAKITA • RICHARD KITANO • BEN KAWA-  
 HATA • ISAMU KAYANO • TOM HORITA • MITS FUJISHIMA • JIM IGUCHI





## *10th grade*

FRONT ROW • LEFT TO RIGHT • MASASHI KURO • ISAMU MORI • JACK  
 KUNITSUGU • ROY NAKAZAWA • MR. COOK adviser • MICHIKO MIYAKE • YURI  
 MOMONOI • ISHII MITORI • SHIZUKO MIURA • ELSIE MURAKAWA •  
 SECOND ROW • MARY MIKAWA • YURIKO NAKAMICHI • GRACE KUWA-  
 BARA • SUMI MATSUI • SUMIYE NERIO • TERUKO MIKAMI •  
 MITSUYE MURASAKI • YASUKO NAKAGAWA • MISAHO NAKATSURU •  
 THIRD ROW • DEEN MATSUZAWA • TATSUO MATSUMOTO • CHOJI MA-  
 TSUSHITA • TATSUO MORI • GEORGE MIYAGI • KENNY MATAYOSHI •  
 JIM MATSUMOTO • KEN NISHIKAWA • HATSUTO NAGAI.



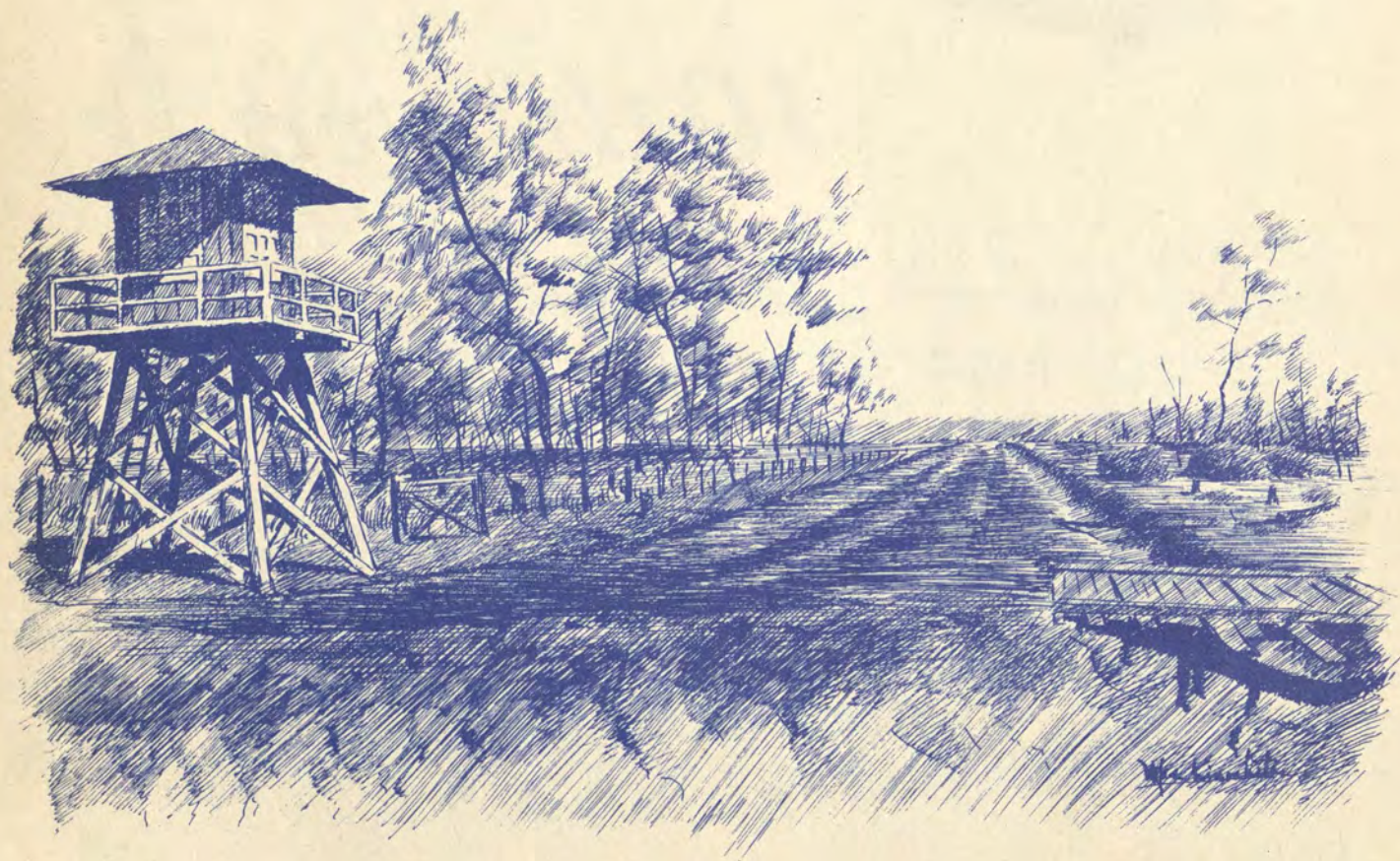
# 10th grade

FRONT ROW LEFT TO RIGHT • TERUKO SAGA • CLARA SUGINO • KAZUO SHIBATA • GRACE SHIRAISHI • TED SAIKI • MRS. M. GUBLO, adviser • GRACE SAGARA • MARIE OTA • KEIKO OGAWA • SECOND ROW • FRANK SASAKI • YOSHIYE SHIMIZU • KAZUKO OTO • JANET SATO • BETTY SHIMIZU • HARUE SAGARA • TSUGI OZAKI • MICHIKO SHIROISHI • FRANCES OKAMURA • KINU OZAKI • ESAKO SHIMADA • SHIZUKO SHODA • BERTHA SAKAMOTO • THIRD ROW • ITSUMU RYUTO • BOB SAKAUYE • WILLIAM SHISHIDA • FUJIO OKIMOTO • GEORGE OKUBO • TOM OKUMOTO • JAMES OYE • KIYOSHI OSHITA • BERT SATO • TERUO NOMURA • WALTER SANO • FRED OSHIMA •



## *10th grade*

FRONT ROW • LEFT TO RIGHT • ALICE TAKAMUNE • HELEN TASHIRO •  
 MARIKO TSUJI • MAKIKO TOGO • HARUYE TSUSAKA • MRS. HOWELL adviser •  
 JOAN ZEIGLER • TERUKO YOKOI • YUKIKO TAMURA • HIDEKO  
 TSUSAKI • KAY YANAGI • SECOND ROW • HARUO YAKUSHIJI • KENJI  
 WATANABE • MITSUO WATANABE • MINORU TAGUCHI • HIRO TASHIRO • KIYOKO  
 WATANABE • MOMOYO WATANABE • MARY TANAKA • KUNIYE YOKOYAMA • LILLIAN  
 YAMASHITA • RUBY YASUHIRO • CHARLIE YAMADA • GEORGE TOMOTA • THIRD ROW •  
 JAMES YONESAWA • KAZUO YOSHIDA • JOE YOSHIKAWA • RAY TAMAKI • KA-  
 TSUMI TAKAI • SAM TANAKA • SHOJO WATANABE • KAZUYUKI TAKE-  
 DA • ROY YAMADA • RICHARD YUKI • UTAKA WADA.



*Our* ORGANIZATIONS

# Student W 44....



UNDER THE EAGLE EYE OF PRESIDENT HOSEN OSHITA, THE LAWMAKERS OF BOHNER HIGH CONVENED EVERY TUESDAY TO DISCUSS VARIOUS CAMPUS PROBLEMS. PROVISIONS FOR THE LUSH GREEN SCHOOL LAWN, THE HANDY PORCH-ROOFS, TWO AMENDMENTS TO THE CONSTITUTION, AND THE SUGGESTION FOR THE ANNUAL WERE THE OUTSTANDING ACHIEVEMENTS OF THE WINTER COUNCIL.

GRABBLE SATOSHI OISHI WAS THE VICE-PRESIDENT; GRACE OGIATA AS SECRETARY; MAS KENMOTSU AS TREASURER.



# Council



S 44....

BUCK SAKURAI POUNDED THE GAVEL MORE THAN ONCE IN EFFORTS TO SUBDUCE THE EXCESSIVE SPIRIT OF FREE SPEECH EVIDENCED AT EVERY MEETING. ALONG WITH DISCUSSING ALL MAJOR AND MINOR QUESTIONS CONFRONTING THE STUDENT BODY, THE COUNCIL PUBLISHED THE RELATION HANDBOOK AND HELD A CLEAN-UP CAMPAIGN IN CO-OPERATION WITH OTHER ORGANIZATIONS.

OTHER FAMED BOHWERITES OF THE STUDENT PERSONNEL WERE: TOSHIO MAKINO, VICE-PRESIDENT; YAEKO WATANABE, SECRETARY; GEORGE KOBAYASHI, TREASURER.



# Resumé

WITH CAMERA MEN WITHOUT FILMS, THE ANNUAL FUND WITHOUT MONEY, THE STAFF, UNDER THE EDITORSHIP OF SHINYA HONDA, FACED MANY OBSTACLES WITH DETERMINED EFFORTS TO TURN OUT A TOP YEAR-BOOK OR "BUST". SPIRIT AND COOPERATION BECAME THE KEY WORDS DURING THE FINAL HURRIED WEEKS OF PRODUCTION.



SHINYA HONDA editor







TOP ROW • LEFT TO RIGHT • MISS SIMPSON, ADVISER; JO-  
 JI KITTAKA, MANAGING EDITOR; GRACE OGATA, BUSI-  
 NESS MANAGER; MAS KENMOTSU, ASSISTANT BUSINESS  
 MANAGER; FUSAYE SAGATA, ADVERTISING MANAGER;  
 KIMI FUJITA, FEATURE EDITOR; MIDORI OURA, CLUB  
 EDITOR; SECOND ROW • MAS KINOSHITA, ART EDITOR;  
 SATOSHI OISHI, ART EDITOR; ART TAKEI, STAFF  
 ARTIST; NELLIE UTSUMI, STAFF ARTIST; HIRO TA-  
 SHIRO, STAFF ARTIST; HOSEN OSHITA, SPORTS EDITOR;  
 ASAKO HORIMOTO, GIRLS' SPORTS EDITOR; SUD YA-  
 KUBA, PRODUCTION MANAGER; KAYO TAKECHI, CIRCU-  
 LATION MANAGER; YAS MIYAO, SENIOR CLASS EDITOR;  
 MICHINOBU SAGA, SENIOR CLASS EDITOR; YOSHIKO TO-  
 MIYAMA, JUNIOR CLASS EDITOR; SHIZUKO SHODA, SOPHO-  
 MORE CLASS EDITOR; KIYOKO WATANABE, BOOSTER  
 EDITOR.

# Hi-Lites

LEDED BY VALIANT, FINGER-HIGH GRACE OGATA, THE HI-LITES STAFF RUSHED MADLY ABOUT WITH UNFLAGGING ENERGY TO GATHER NEWS, "DIRT," AND GOSSIP. AFTER THE PAPER BECAME A PART OF THE INTERNATIONAL QUILL AND SCROLL AND ALSO A MEMBER OF THE ARKANSAS HIGH SCHOOLS' NEWSPAPER ASSOCIATION, TYPEWRITERS WERE POUNDED WITH EAGER AMBITION TO MAKE EVERY EDITION A FOUR-STAR SHEET.



GRACE OGATA editor





TOP • LEFT TO RIGHT • RUTH KAMBARA, ASSOCIATE EDITOR; SAM WAKAI, ASSOCIATE EDITOR, NEWS EDITOR; SATOSHI OISHI, BUSINESS MANAGER; SHINYA HONDA, SPORTS EDITOR, BUSINESS MANAGER •



BOTTOM • MAY YABUMOTO, NEWS EDITOR; KAYO TAKECHI, FEATURE EDITOR; HOSEN OSHITA, SPORTS EDITOR; GEORGE KOBAYASHI, SPORTS EDITOR.

TOP • ART TAKEI, ART EDITOR; ASAKO HORIMOTO, TYPIST; MARION YAMAMOTO, TYPIST; TOSHIO MAKINO, TECHNICIAN; YUTAKA SHIBAHASHI, TECHNICIAN; MRS. RAMSDALE, ADVISER



# Girls' League

ORGANIZED SUCCESSFULLY LAST WINTER, UNDER THE SPONSORSHIP OF MISS AMIS AND THE LEADERSHIP OF BUTH KAMBARA, THE GIRLS' LEAGUE BECAME EXTREMELY ACTIVE WITH THE PRESENTATION OF A SADIE HAWKIN'S PLAY, AN AFTER SCHOOL DANCE, MONTHLY PRACTICE DANCES, A PREVIEW OF FASHIONS, AND A GENERAL UPLIFT IN SCHOOL SPIRIT, COOPERATION, AND ENVIRONMENT. LILLIAN UYEDA LED THE GIRLS DURING THE SUMMER TERM.

LEFT - TOP TO BOTTOM - POPULAR CAMPUS FASHIONS - ALL GIRLS LEARN TO DANCE AND JITTERBUG - ACTIVE CABINET OFFICERS PLAN ACTIVITIES - BOTTOM - CABINET AND HOMEROOM REPRESENTATIVES.



# N. H. S.



THOSE BRAIN TRUSTS THAT DO THE TOP-NOTCH PERCOLATING IN CLASSROOMS AND IN LEADING SCHOOL AFFAIRS TOOK TIME OUT FROM SCHOOL BOOKS TO HOLD A COUPLE OF SUMPTUOUS PARTIES, A DELIGHTFUL AFTERNOON TEA, FORMAL INITIATIONS, AND TO TOP IT OFF A LARGE-SCALE BOND-DRIVE THAT NETTED ELEVEN JEEPS FOR THE SCHOOL.

## Quill and Scroll

THE JOURNALISM "GREATS" ON THE CAMPUS INAUGURATED THE QUILL AND SCROLL, AN INTERNATIONAL HONORARY JOURNALISM SOCIETY, WITH EIGHT CHARTER MEMBERS. EACH OF THESE INVALUABLE WRITERS RECEIVED A PIN FROM THE ORGANIZATION HEADQUARTERS. MRS. RAMSDELL IS THE SPONSOR.



# Knights



BESIDES SPONSORING THE NOW TRADITIONAL ANNUAL CO-ED QUEEN CONTEST, THESE FELLOWS HEADED INNUMERABLE DANCES AND PARTIES SUCH AS THE BASKET DANCE, MISS CO-ED'S BALL AND OTHER ROMANTIC AFFAIRS. THIS POPULAR CLUB WAS LED BY EUGENE SAKASEGAWA DURING THE WINTER AND RAYMOND KURIHARA DURING THIS SUMMER.

# Top Hatters

AS THEY STRAIGHTENED THEIR MAKE-BELIEVE NECKTIES AND TIPPED THEIR IMAGINARY TOP-HATS, THESE GENTLEMEN SPENT THEIR TIME DISCUSSING ETIQUETTE. NOW KNOWN AS THE 'BASKETBALL CLUB,' THEY WERE LED BY SHIG SATO AND SAT QUNE. HANK HAYASHINO ADVISED THEM.



## Hi-4



UNDER THE LEADERSHIP OF MAS SHIBATA AND ROBERT NAKAMURA, THESE ENERGETIC FELLOWS COÖPERATED WITH THE CENTER C.A., CONTRIBUTED TO GENERAL SCHOOL IMPROVEMENT, PRESENTED A FLAG POLE TO THE SCHOOL, AND HELD PARTIES AND TAMALES SALES. VIC MATSUI AND HANK HAYASHINO WERE THEIR SPONSORS.

## Jci-4

FIRST ORGANIZED UNDER MARGARET SHIMIZU LAST WINTER, NOT ONLY HAVE THESE PLEASURE-SEEKING CO-EDS BEEN ACTIVELY ENGAGED IN MANY SCHOOL SOCIALS, BUT HAVE ALSO ROLLED BANDAGES FOR THE RED CROSS. SPONSORED BY MISS OGA AND MISS TOYOTA, THE GIRLS HAVE CHOSEN KAYOKO TAKECHI TO LEAD THEM THROUGH THE SUMMER SEMESTER.



# Press



THE PRESENTATION OF A PLAY DEPICTING THE DAILY STRUGGLES OF THE NEWS-  
PAPER STAFF BEFORE GOING TO PRESS WAS THE BRIGHTEST SPOT IN THE DOINGS  
OF THE PRESS CLUB. WITH MRS. RAMSDELL AS SPONSOR, THE CLUB WAS HEADED BY SA-  
TOSHI OISHI AND SHINYA HONDA DURING THE TWO SEMESTERS.

# Spanish

SPEAKING WHAT IT CALLS "EL ESPANOL," THE SPANISH CLUB HAS FIRMLY ESTABLISHED  
ITSELF WITH ITS MANY ACTIVITIES SUCH AS A GAY CHRISTMAS PARTY IN THE TRUE  
LATIN-AMERICAN STYLE, INNUMERABLE GAMES, PROGRAMS, AND STUDIES OF SPAN-  
ISH-SPEAKING COUNTRIES. TAKASHI YAKURA HEADED THE CLUB SPONSORED BY MRS. GUBLO.





# Handicraft



PLUMP, STUFFED TOYS, DELICATE CROCHET WORK, WARM KNITTED THINGS, AND PERFECTLY STITCHED CLOTHING WERE MADE BY THESE INDUSTRIOUS MEMBERS UNDER THE LEADERSHIP OF MARY FUKUCHI AND ALICE OKAMURA. MISS SEKI WAS THEIR FIRST SPONSOR; LATER, MISS KUBO ADVISED THEM.

# Needlecraft

NEEDLEWORK OF ALL KINDS — KNITTED SWEATERS, CROCHETED THINGS, EMBROIDERY — ENGAGED THE BUSY HANDS OF THIS GROUP. MARGARET KIKUCHI AND LILLIAN HANANOCHI LED THE GIRLS.



# Library



COUNTLESS NUMBERS OF MAGAZINES AND BOOKS INTERESTED THESE BOOKWORMS WHO GATHERED EVERY FRIDAY MORNING IN THE SCHOOL LIBRARY UNDER THE SUPERVISION OF MISS COOPER.

# Current Events

THESE BEWILDERED MEMBERS HAD A TERRIBLE TIME TRYING TO KEEP UP WITH A CONSTANTLY CHANGING WORLD. IN DISCUSSIONS, REPORTS FROM MAGAZINES AND OTHER SOURCES, PRESIDENTS YAS MIYAO AND NAGAO HAMADA LED THEM IN THEIR PURSUIT AFTER A KNOWLEDGE OF THE CURRENT WORLD UNDER THE SPONSORSHIP OF MISS JACKSON.



# Party Planning



PREPARING TO BECOME FIRST-RATE HOSTESSES, THESE GIRLS HAD HILARIOUS TIMES PLANNING AND GIVING PARTIES WITH GAMES AND REFRESHMENTS. HIDE IJIN AND MARY SATO PRESIDED WITH MISS TOMIOKA AS THEIR ADVISER.

# Know Yourself

TURNING OUT HIGHLY POLISHED, WELL-MANNERED, AND BEAUTIFULLY GROOMED PERSONALITIES, THE CLUB TRAINED ITS MEMBERS THROUGH SPEAKERS, ORIGINAL PLAYS AND PARTIES, AND HALF-A-DOZEN SOCIALS. LITTLE FUJIKO KIKUCHI PRESIDED WITH MRS. HOWELL AS THEIR ADVISER.



# Photography

THE DARKROOM IN 8F ATTRACTED THESE CAMERA-FRIENDS FOR A LEGITIMATE REASON - TO DEVELOP NUMEROUS PICTURES WHICH THEY THEMSELVES SNAPPED.



# Electronics



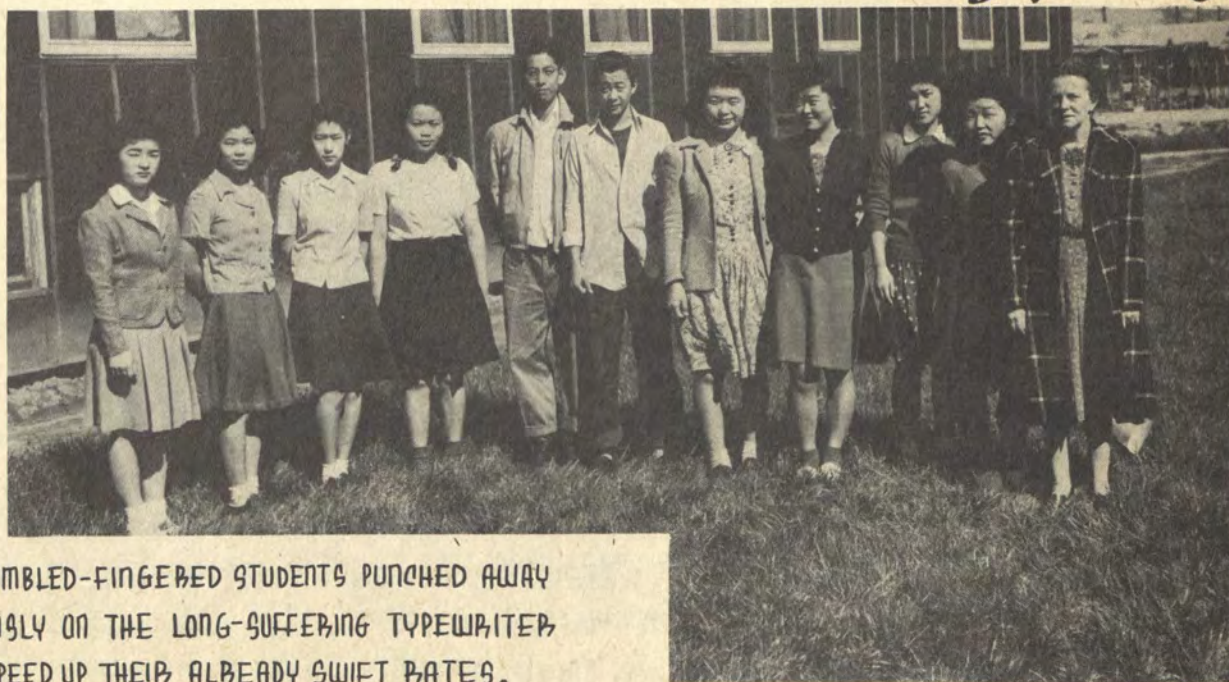
SURROUNDED BY AN ATMOSPHERE OF DEEP MYSTERY, THIS CLUB LED BY ATSUSHI FUJI, CONDUCTED DEMONSTRATIONS OF ELECTRICAL MAGIC.

# Art

THE ARTISTICALLY INCLINED JOYFULLY PLASTERED THE ART ROOM WALLS AND TABLES - AND THEMSELVES - WITH PAINT IN ATTEMPTS TO PRODUCE MASTERPIECES.



# Typing



THE NIMBLE-FINGERED STUDENTS PUNCHED AWAY INDUSTRIOUSLY ON THE LONG-SUFFERING TYPEWRITER KEYS TO SPEED UP THEIR ALREADY SWIFT PATES.

# Glee

ASPIRING TO THE HEIGHTS OF THE ALL-STAR GIRL ORCHESTRA, THE BONWEB HI NIGHTINGALES DEFTLY SANG ON MANY OCCASIONS.



# Classical



THESE "HIGHBROWS" NOT ONLY ENJOYED SUPERB PIECES OF CLASSICAL MUSIC BUT ALSO SPONSORED A "PENNY PITCHING" BOOTH IN THE CARNIVAL.

# Reading

DELVING INTO THE MYSTERIES OF THE PRINTED PAGE, THESE INTELLECTUALS WERE LED BY HIROSHI IGE IN THE SUMMER TERM AND SPONSORED BY MISS BANKS.



# Sophomore



LED BY BOY NAKAZAWA, THESE ACTIVE MEMBERS GAVE A FAREWELL SOCIAL FOR THE TULE BOUND, AND ENGAGED IN OTHER ACTIVITIES.

# Model Airplane

THE FUTURE BUILDERS OF ULTRA-MODERN AIRSHIPS SPENT MANY HOURS CONSTRUCTING MODELS. THESE DESIGNERS WERE LED BY MITSUO WATANABE.



# Horseshoe



THE HORSESHOE PITCHING MEMBERS OF THIS NEW CLUB, PRESIDED OVER BY TAD WAKAI AND ADVISED BY MR. RAMSDALL, WAGED HOT CONTESTS AMONG THEMSELVES.



# B.U.G.s

KNOWN OFFICIALLY AS B.U.G.S, THE SOPHOMORE GIRLS PARTICIPATED IN MANY ACTIVITIES WITH GRACE SAGARA AS THEIR PRESIDENT.



# Office

RUNNING AND WORKING THEMSELVES RAGGED FOR THE BENEFIT OF THE STUDENTS, THE OFFICE ASSISTANTS PROVED INVALUABLE IN ATTENDANCE CHECKUP.





# Chorus

UNDER THE THEME OF "APPRECIATION THROUGH PARTICIPATION," THE MEMBERS OF THIS GROUP HAVE BEEN STUDYING AMERICAN MUSIC. THEY HAVE SUNG FOR THE BENEFIT OF THE WHOLE CENTER ON VARIOUS OCCASIONS AND HAVE JOURNEYED TO MCGEEHEE TO ENTERTAIN THE GARDEN CLUB.



DIRECTED BY MRS. PRICE, THESE POLISHED SINGERS HAVE BEEN PERFORMING AT COMMENCEMENTS AND BACCALAUREATE SERVICES, AT JUNIOR AND SENIOR HI ASSEMBLIES, FOR P.T.A. MEETINGS, AND ELSEWHERE. THEY STUDY PRINCIPALLY FOLK SONGS AND OLD MASTERS' MUSIC.

# Music Makers

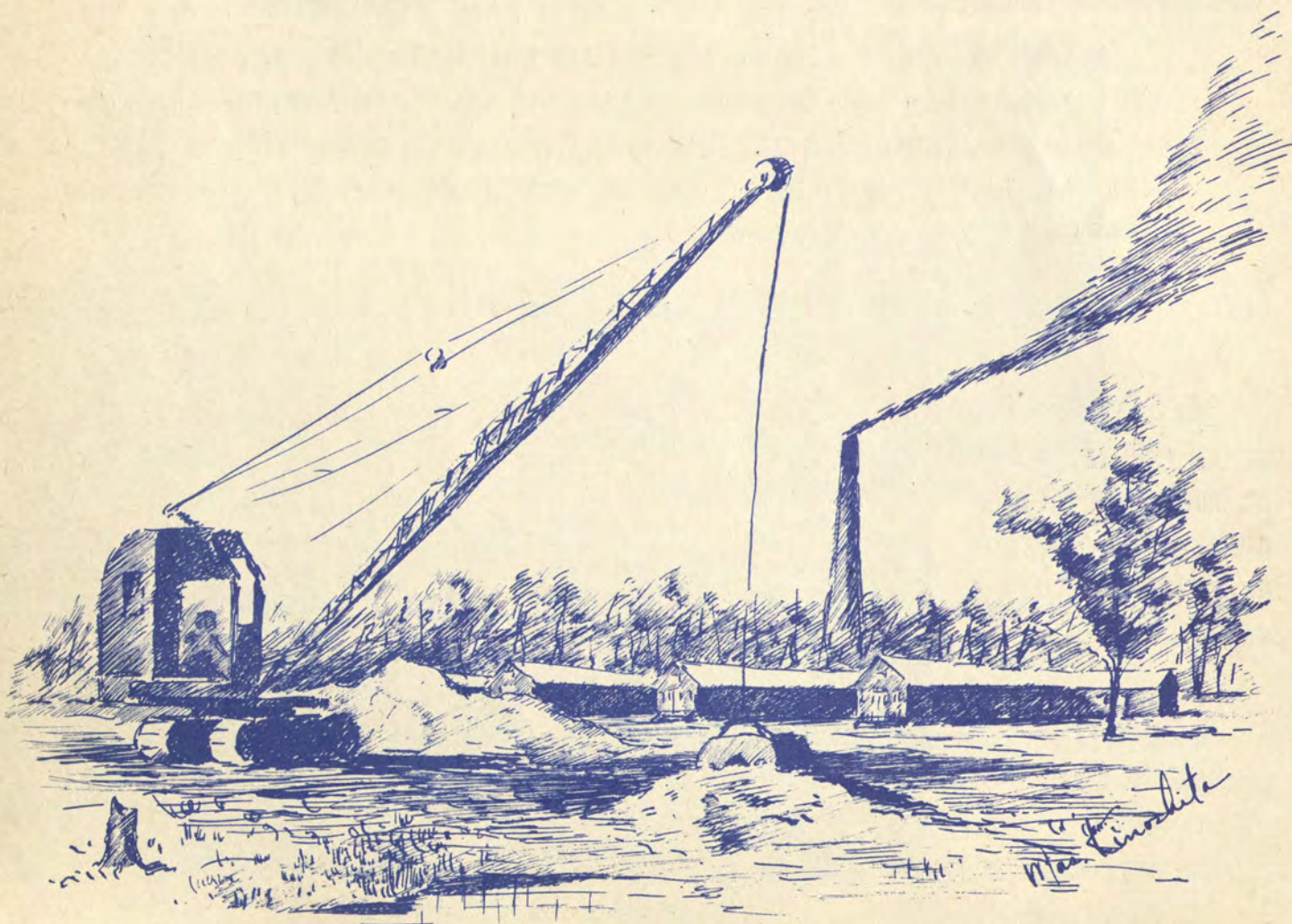


DURING MR. COLE'S FAMOUS SEVENTH PERIOD, THE "MUSIC-MASTERS" DILIGENTLY PRACTICED POPULAR SONGS. VOCALIST ROSIE KUSAMA AND JEAN ZIEGLER AND TROMBONE SOLOIST TOSHIO MATSUO ADDED ZEST TO THE DANCE ORCHESTRA THAT PLAYED AT U.S.O., SCHOOL, AND BLOCK DANCES, IN THE ASSEMBLY PROGRAMS, AND AT SENIOR PROMS.

MR. COLE'S BAND TURNED OUT BEAUTIFUL RHYTHM AT JUNIOR AND SENIOR HIGH SCHOOL ASSEMBLIES, AT OUTDOOR CONCERTS, AND ELSEWHERE.



*Our* ACTIVITIES



Wm. J. Lincolnton

*Our* ACTIVITIES

Sept. 20, 1943



1st edition of HI-LITES

Oct. 4, 1943



Segregation

Oct. 18, 1943



1st Amendment passed

Nov. 2, 1943



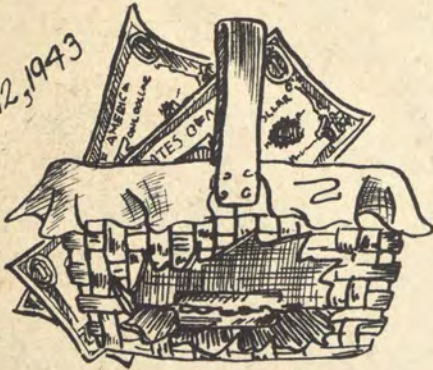
Senior 'B' Play

Nov. 4, 1943



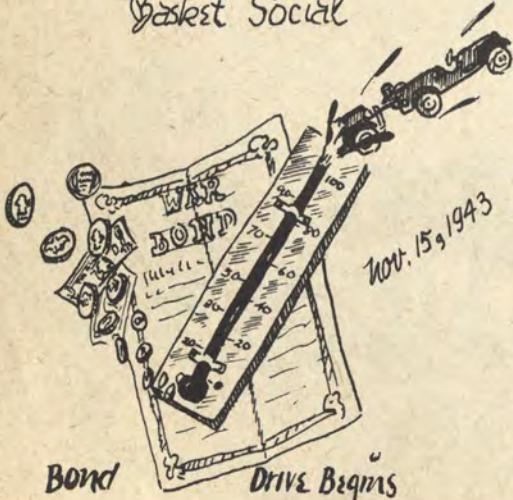
"Gadie Hawkins Day" Assembly

Nov. 12, 1943



Basket Social

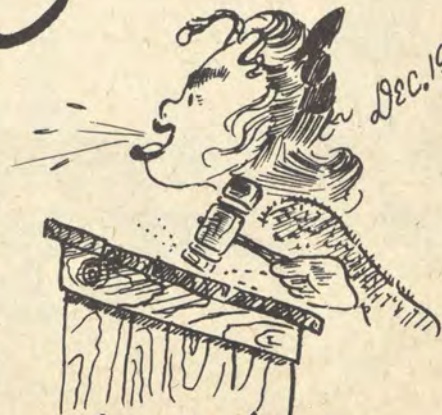
# Home



Nov. 15, 1943

Bond Drive Begins

Dec. 19, 1943



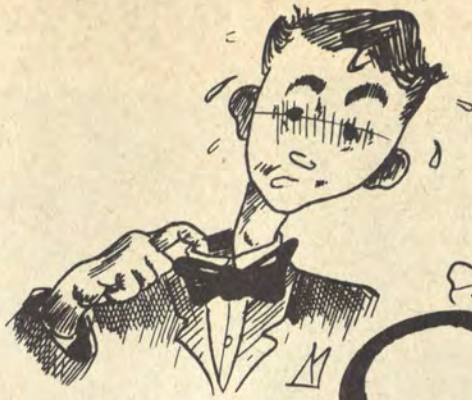
Girls League Officers Elected

Dec. 22, 1943

Jan. 9, 1944



Campus Co-ed  
Crowned



Senior Prom

# Winter?

Jan. 14,  
1944



Graduation Exercises

Feb. 7 - Feb. 14, 1944



Boys Week



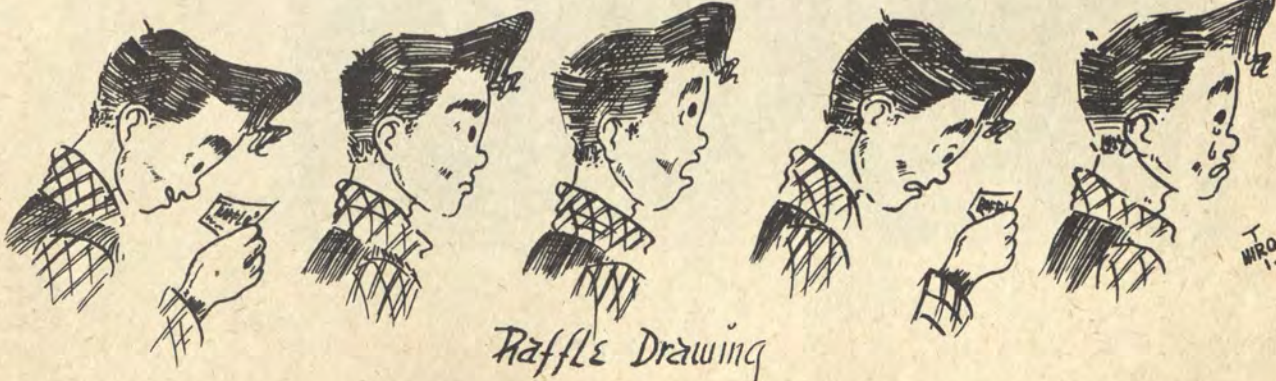
Girls Week

Feb. 28, 1944



Tamale Sale

April 15, 1944 - Carnival



Raffle Drawing

T. WRO





SPONSORED BY THE KNIGHTS, RUTH KAMBARA WAS CROWNED "MISS CAMPUS COED OF 1944" IN AN IMPRESSIVE CEREMONY AS PART OF A SPECIAL ASSEMBLY ON DECEMBER 22, 1943. MARION YAMAMOTO, LAST YEAR'S QUEEN, GRACIOUSLY CROWNED HER SUCCESSOR BEFORE THE ADMIRING EYES OF THE STUDENT BODY. HER CHARMING ATTENDANTS WERE LILYAN HANANOUCHI AND LILLIAN UEDA.

