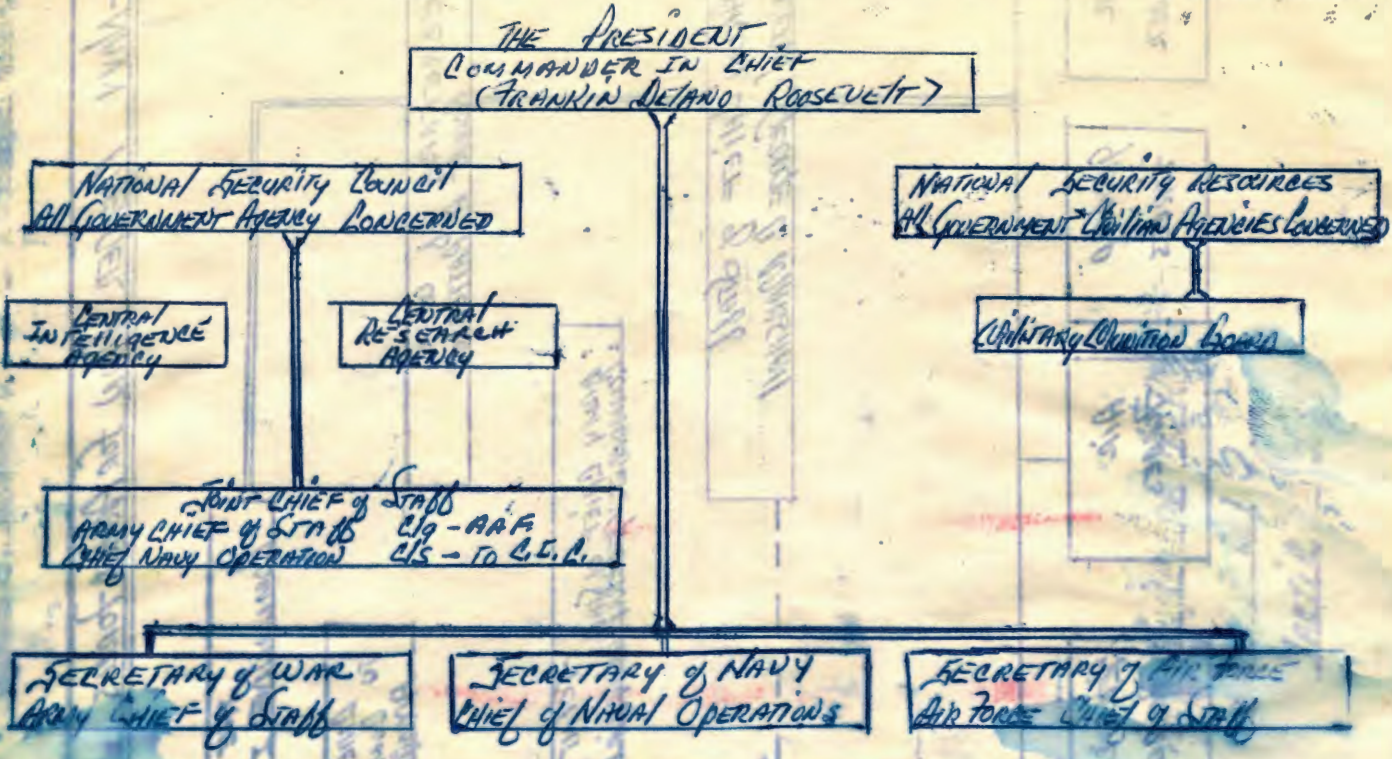


"NAVY MERGER PLAN"

THIS PLAN STRESSES CIVILIAN CONTROL QUERIED IN THE NATIONAL COUNCIL AND BOARD WHICH THE NAVY DRAWS
 LARGELY ON ITS CHART, BUT WHICH WOULD KEEP A DIRECT LINE FROM THE SECRETARY OF THE NAVY TO THE
 COMMANDER IN CHIEF.



"ARMY MERGER PLAN"

THE ARMY MERGER PLAN IS SHOWN IN UNBROKEN LINES ALSO JOINED BY THE DASHES WITH THE PORTION OF THE COUNCIL FOR COMBAT SERVICES
 AND THE INTELLIGENCE SERVICE (UNBROKEN LINE) STRESSES UNIFICATION OF COMBAT SERVICES AND CIVILIAN OFFICERS, BUT
 WILL BE DRAWN IN ROTATION FROM THE THREE SERVICES



ARMY AIR FORCE + MARINE

NAVY AND COAST GUARD

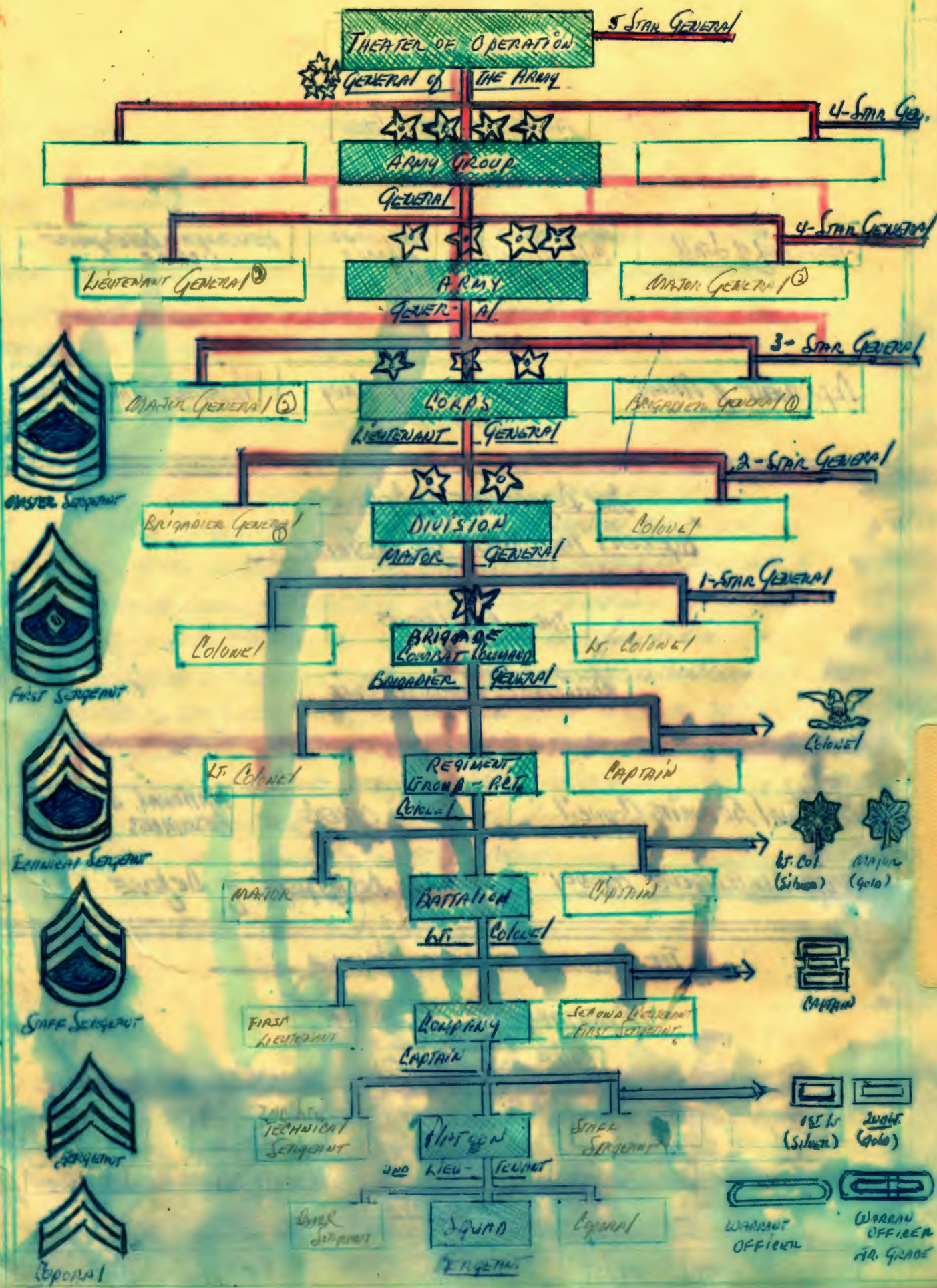
INSIGNIA	RANK	ARMY -	INSIGNIA	RANK	STRIPES
5 Silver Stars	GENERAL of the AIR FORCE		5 Silver Stars	FLEET ADMIRAL	1-4-0
4 " "	GENERAL		4 " "	ADMIRAL	1-3-0
3 " "	LT. GENERAL		3 " "	VICE ADMIRAL	1-2-0
2 " "	MAJOR GENERAL		2 " "	REAR ADMIRAL	1-1-0
1 " STAR	BRIGADEIER GENERAL		1 " STAR	COMMODORE	1-0-0
SILVER EAGLE	COLONEL		SILVER EAGLE	CAPTAIN	0-4-0
SILVER OAK LEAF	LT. COLONEL		SILVER OAK LEAF	COMMANDER	0-3-0
GOLD OAK LEAF	MAJOR		GOLD OAK LEAF	LT. COMMANDER	0-2-1
2 SILVER BARS	CAPTAIN		2 SILVER BARS	LIEUTENANT	0-2-0
1 SILVER BAR	FIRST LIEUTENANT		1 SILVER BAR	LT JUNIOR GRADE	0-1-1
1 GOLD BAR	SECOND LIEUTENANT		1 GOLD BAR	ENSIGN	0-1-0
1 SILVER BAR, 3 ENAMEL BANDS	CHIEF WO. W-4		SILVER BAR, 3 ENAMEL BANDS	CHIEF WO - W-4	0-1-0
1 " " 2 " "	" " " W-3		" " 2 " "	" " " - W-3	0100
1 Gold " 3 " "	" " " W-2		GOLD BAR 3 " "	" " " - W-2	0100
1 Gold " 2 " "	WARRANT OFFICER W-1		" " 2 " "	WARRANT OFFICER W-1	0100

EXISTING PERSONNEL

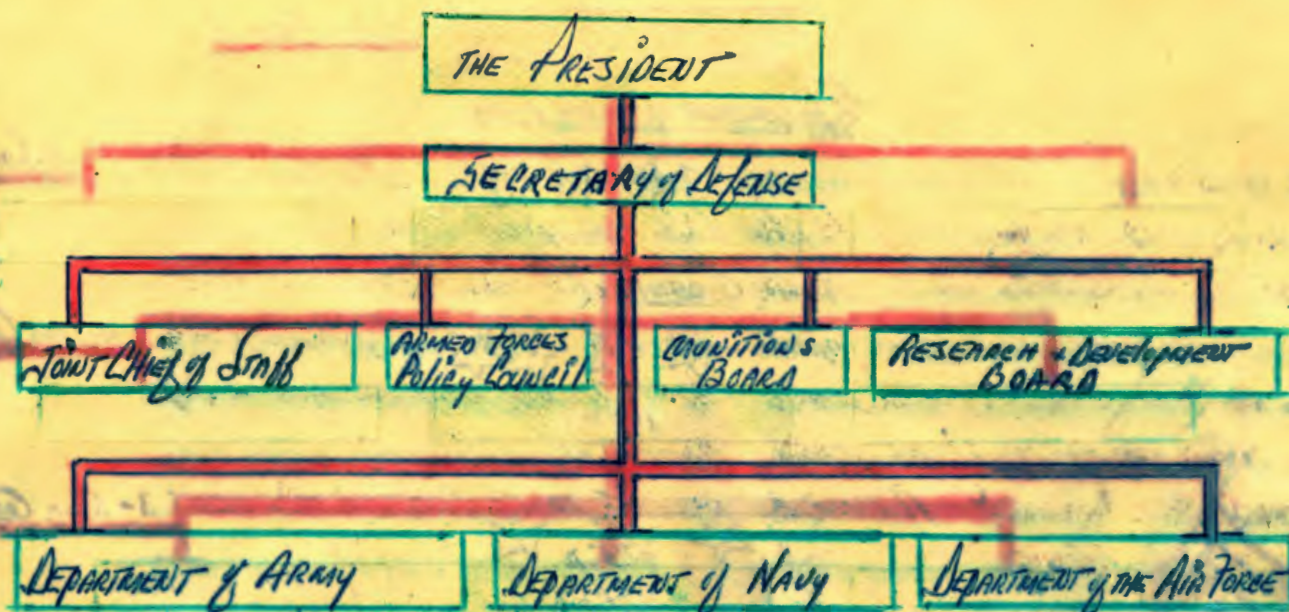
ARMY	AIR FORCE	MARINE	NAVY	
SERGEANT MAJOR	CHIEF MASTER SERGEANT	SERGEANT MAJOR	MASTER C.P.O.	E-9
FIRST & MASTER SERGEANT	SENIOR " "	FIRST SERGEANT	SENIOR " "	E-8
SERGEANT FIRST CLASS	MASTER SERGEANT	MASTER SERGEANT	CHIEF PETTY OFFICER	E-7
STAFF SERGEANT	TECHNICAL " "	QUARTERMASTER	PETTY OFFICER 1ST CLASS	E-6
SERGEANT	STAFF " "	STAFF " "	" " 2ND "	E-5
Corporal	AIRMAN 1ST CLASS	SERGEANT "	" " 3RD "	E-4
Private 1st Class	" 2ND "	Corporal	SERVANT	E-3
Private	" 3RD "	Private 1st Class	SEAMAN APPRENTICE	E-2
Private	AIRMAN	Private	" RECRUIT	E-1

ENAMEL BANDS FOR THE ARMY IS COLORED BROWN	(1) BREAKS IN BAND FOR W.O.	W-4
" " " " NAVY " "	(2) BREAKS " " " " "	W-3
" " " " MARINE " "	(3) " " " " " " "	W-2
" " " " AIR FORCE " "		W-1

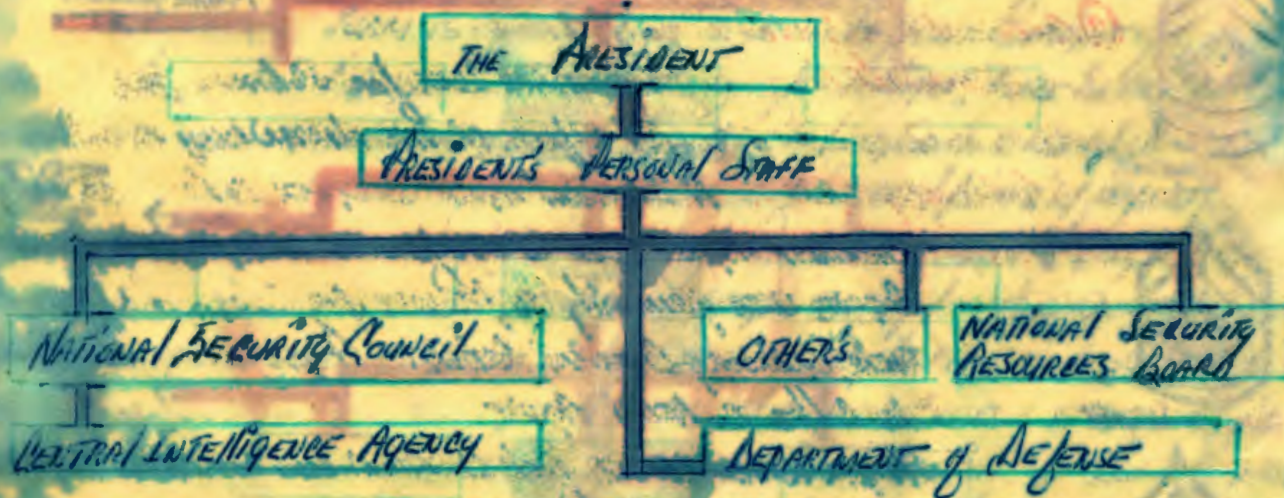
CHAIN of COMMANDS : "SQUAD TO THEATER of OPERATIONS"



THE DEPARTMENT of DEFENSE



THE DEPARTMENT of DEFENSE "AGENCIES THAT ASSIST THE PRESIDENT"



THE DEPARTMENT OF THE ARMY

