



# RUNCORN'S

## MESSAGE c o o o o o

Dear Amache Cooperators:

There were frustrations and confusion in your minds and hearts when the Enterprises first began; now there is more of mutual responsibility and democratically planned cooperative action. There had been a keen selfish and destructive spirit of competition; now there is a more kindly forward-looking constructive spirit of cooperation.

Once there was excessive pride in private property and much talk of profit; now there is "our co-op" and patronage refunds and quality goods with our Co-op brand for all in Amache. We used to say "I" and "my" with conceit and arrogance; more recently we have been learning to sense the joy and friendliness of the "we" and "our" consciousness.

"Consumer", "Rochdale", "1844", "C.C.A." and "Cooperative Movement" meant nothing to the people of Amache back in the bitter summer of 1942. In the minds of many in Amache since then these words have awakened a new interest, a new hope with some promise of a better and more equitable world, regardless of class or creed or color.

Whatever the extent of these attitudes, these habits of thought and action developed in the members of the Amache Consumer Enterprises, Inc. in the past two or three years, I count it an honor and a special privilege to have been an Amache Cooperator and fellow worker and consumer.

I trust that the spirit of cooperation will continue to be exercised wherever you may live in the future. With kind personal regards and best wishes for continued cooperative success, I am

Most sincerely yours,

E. H. Runcorn  
Business Enterprises Auditor  
Supervisor

## MESSAGE BY PRESIDENT



Our Cooperative Association has been founded and operated strictly in accordance with the successfully proven Rochdale principles. I am very proud to say that our organization has been carried on smoothly and efficiently only because of the members full cooperation and their respect for the spirit of Rochdale. This experience, though short, has meant more to us, the evacuees, than mere words can express.

Today all nations are involved in a war which is destroying the world economy. Nevertheless, I believe that our cooperative enterprise of the Rochdale system will spread widely throughout the world in the coming post-war era.



A. Inaba, Secretary

The Rochdale spirit is purely based on democratic principles. To build our future economic life since our economic basis have been destroyed because of the outbreak of war, this Cooperative system will be the only guide we can follow.

Cooperation is progress; there will be no progress where no cooperation can be found.

I sincerely hope that all men and women who have enjoyed this valuable experience, and spirit of cooperation would use them for the coming future to build our financial foundation.

Keisaburo Koda



J. J. Hikido, Treas.



MESSAGE BY

GENERAL

MANAGER

To The Employees of Amache Co-op:

It has been a great pleasure for me to be associated with the Amache Consumer Enterprises. I am deeply grateful for the opportunity to contribute my effort in serving the center residents on the co-operative basis.

With the fine cooperation and hard work of fellow employees, we have attained a success in financial soundness second to no other relocation center Co-op. May I take this opportunity to thank you for your fine support and cooperation.

The educational value of the experience in cooperative enterprise has been invaluable and will certainly be an inspiration upon which we may build our future.

With the closing of this center definitely in view, our aim is to continue supplying the center residents with the necessary articles and to eventually accomplish a successful dissolution. Friends must part with friends, and so let us preserve this souvenir book filled with memories of hard and happy work together. Be assured that your unselfish spirit of cooperation, your eagerness to serve cheerfully and honestly will certainly help you attain success and happiness in your future.

Good luck and success to you all.

H. T. Tomio,  
General Manager





MESSAGE *by*

ASSISTANT  
GENERAL  
MANAGER

Greetings Fellow Workers:

Congratulations upon your issue of Souvenir Album. It has been a pleasure as well as educational, to be one of you in helping to bring success to our cooperative store. Through your efforts and interest you have made this Consumer Enterprises as one of the outstanding among the other centers. These past years we have faced many changes both in personels and administrative staff. Dislikes and likes were witnessed by all of us, but through your sound judgement and coordination we have faced the problem sincerely and cooperatively.

This year 1945 will perhaps mark a significant meaning to most of us due to the tentative plan of the War Relocation Authority in closing all the centers. Perhaps most of us will be leaving for various parts of the United States. I know, with the spirit of cooperation you have shown, you will face the problem collectively and wisely.

In closing, may I extend my heartiest thanks to you in helping me in various problems arising as Assistant General Manager.

As your friend,

Manjiro Nakawatase,  
Assistant General Mgr.

H. Tsuno, Personnel Mgr.



MEMBERSHIP DRIVE COMMITTEE

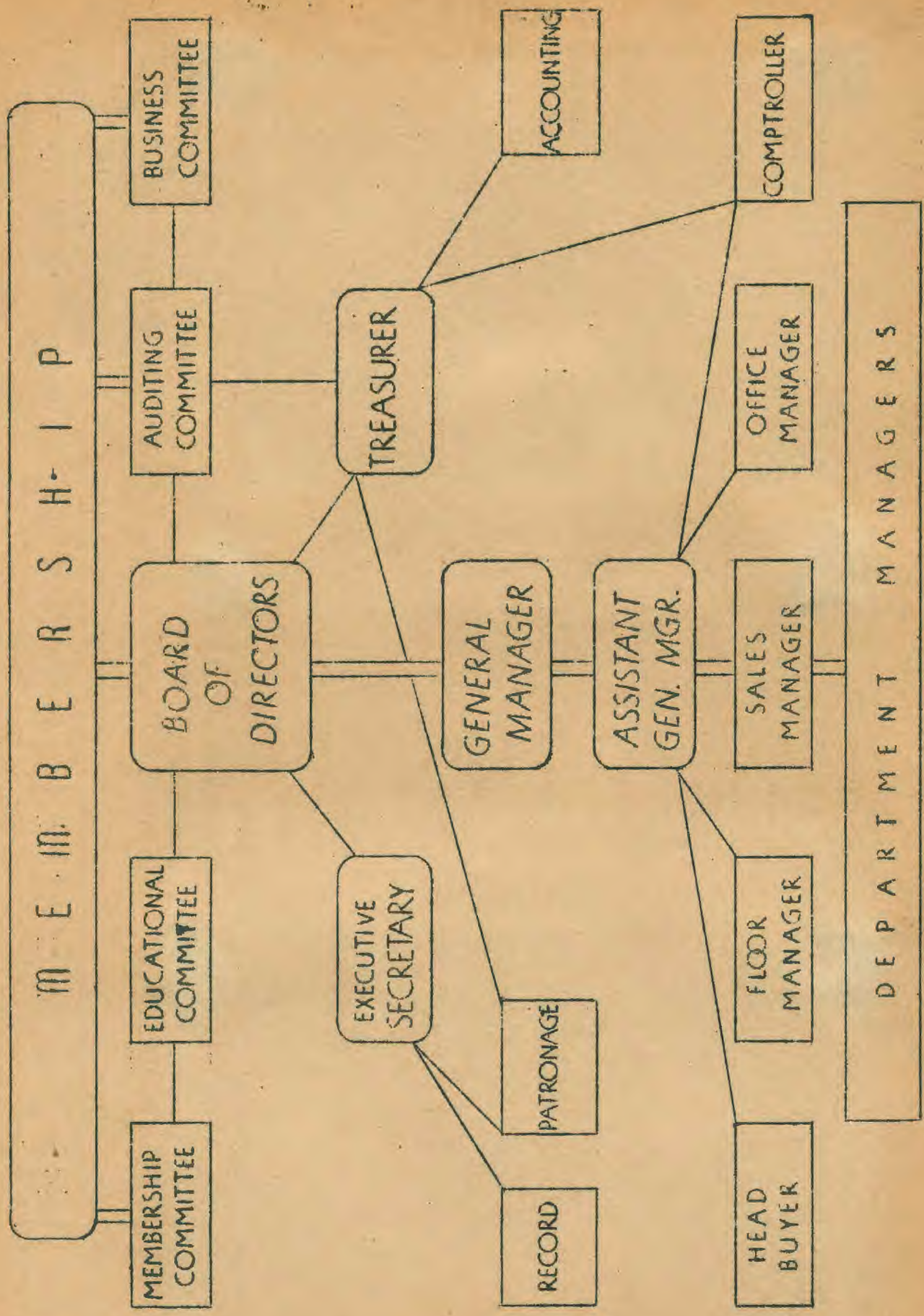


MEMBERSHIP DRIVE COMMITTEE

L to R: T. Konno, G. Mitani, T. Miyamoto, T. Terami

# MEMBERSHIP DRIVE COMMITTEE





# BOARD of DIRECTORS



L to R; Front row -- N. Kurita, K. Umekubo, K. Koda, T. Nishizaki, S. Kuramoto. Second row -- K. Nozawa, J. Hikido, Inaba.

# BUSINESS COMMITTEE

