

*Eighth Grade*



*Eighth Grade*





SEVENTH GRADE CLASS OFFICERS  
Murata J., Hamatake N., Yoshii J., Hatamiya G.

## *Seventh Grade*

The industrious group of young students you saw selling taffy and hamburgers and maintaining a dart throwing stand at the Yearbook Carnival were the Seventh Graders.

Boasting a record of being one of the earliest classes to be organized, it has gone on to become one of the most active classes in the school. Besides contributing to the Yearbook Fund, they sponsored a contest with the Eighth Grade for the selection of a prince and princesses to reign over the Carnival. George Hatamiya, the class prexy, and Elsie Eto won the coveted titles. Mrs. Marguerite Cooks' class proudly holds the record in the Red Cross membership drive by enrolling more students than any other class in Tri-State High School.

Other activities in which the Seventh Grade classes have taken part were: trips to the farms, a thorough study of relocation, regular assemblies, making and giving gifts to the children in the hospital during Christmas, and maintaining other well rounded activities.



# ACTIVITIES



Edward Yoshikawa



George Katagiri  
May Abe  
Hisako Narahara



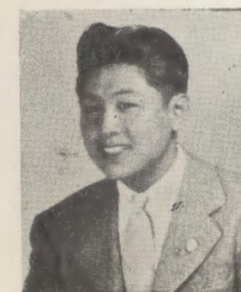
Mollie Yasutake  
Miyuki Inouye  
Conrad Kurahara

### Student Body Officers

With the installation of officers on January 21, 1943, the Tri-State student government became a reality, and executive work began under the advisorship of Mr. Garrett Starmer.

With the departure of the girls' vice president, Peggy Yamamoto, Mollie Yasutake was elected to fill that position. Shigeo Nakanishi was appointed by the president to take over the office of chief justice which was vacated by Tom Haji, another relocatee. During the third quarter, the commissioner of cooperatives was added to the list of student body officers. John Kanda was appointed by the president as commissioner of cooperatives *pro tem*.

During the second quarter Principal Martin P. Gunderson officially approved of 7111-C as the student government headquarters. After several weeks of construction work, the inner office took shape as the "Student Government Office."



Paul Ohmura



Nobie Kodama



Michiko Takahashi



Dorothy Aredas



Hiroshi Nakanishi



STUDENT FORUM

Front row: Shintaku A., Uratsu M., Koshiha S., Makashima C., Yasutake M., Takano A., Kumasaka R., Yamamoto S. Second row: Abe M., Fujimoto F., Oshika J., Masuoka T., Matsumoto Y., Miyaoka F., Osuga J., Akita N., Tsukamoto M. Third row: Enomoto J., Tamaki T., Sato A., Yamasaki L., Osaki M., Hatamiya G., Murata J., Okano B., Arima J. Fourth row: Tanaka R., Mochizuki M., Fujimoto T., Seto L., Mr. Starmer, Katagiri G., Kanemoto A.



STUDENT FORUM

Front row: Hanamoto L., Matsuo H., Yoshizaki G., Hijikata R., Doi M., Fukumori S., Goishi M., Sakamoto E., Oto M., Sekiguchi N., Sadamori E., Fujihara K., Aredas D., Hiuga K., Katagiri G. Second row: Mochizuki M., Shintaku A., Mizoue Y., Norimatsu M., Manji J., Aredas S., Takeda M., Masunaga F., Nakamura J., Hayashi M., Hayano K., Nakao A., Hashimoto K., Fukai R. Third row: Seto G., Fujimoto F., Oshika J., Kumasaka Y., Mizoue J., Arima J., Tanaka R., Sumada M., Tamaki T., Nakanishi S., Arima G., Sugiyama A., Koshiha S., Sasaki T. Fourth row: Sato K., Sato A., Enomoto J., Fujimoto T., Taniyasu M., Numata J., Hiraga G., Matsuda T., Mr. Garrett Starmer, Kanemoto A., Sato S., Yoshikai T., Nakanishi T., Shibata K., Yumibe T.

KNIGHTS OF HONOR

Front row: Shimasaki G., Yorita P., Morimoto A., Fujihara K., Tsugawa S., Hikiji M., Nakamura M., Tanabe M. Second row: Mizoue J., Wada J., Nakaoki J., Kanda J., Osuga J., Sasaki J., Sakuma A., Mizoue Y. Third row: Himoto S., Matsumoto L., Iwamoto G., Yoshikawa E., Mr. Starmer, Katagiri G., Kanemoto A., Arima G.

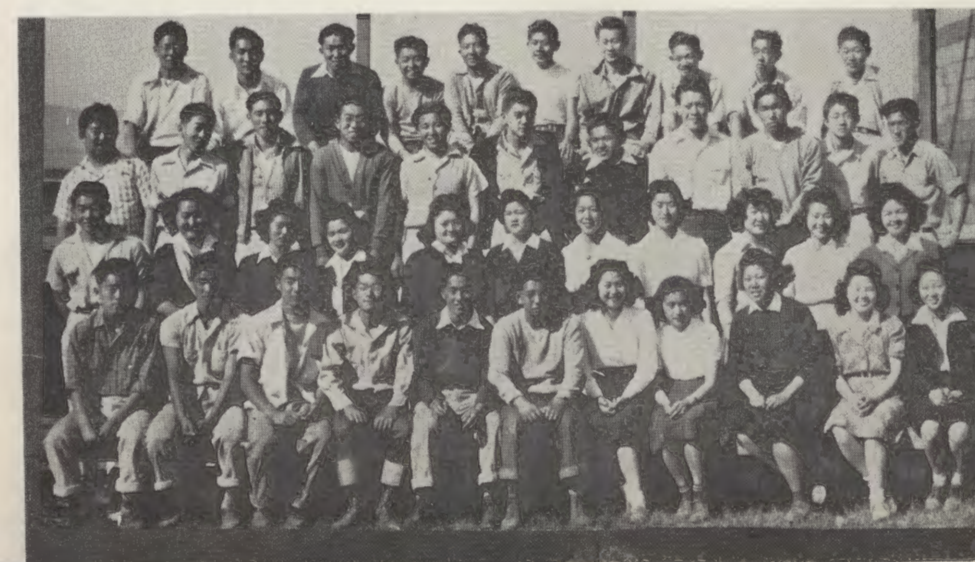


RALLY COMMITTEE



TRI-STATE ANGELS

PHOTOGRAPHY CLUB





EXECUTIVE STAFF  
 Front row: Toki A., Nakamura M., Sugiyama H., Hayano H., Hayashi B.; second row: Hayashida B., Shintaku A., Mochizuki M., Nishimoto H., Fujimoto T.

ANNUAL STAFF  
 Inouye M., Sugiyama A., Uratsu M., Mollie Yasutake

EXECUTIVE STAFF  
 Front row: Motomatsu G., Kinoshita R., Tamura M., Ishikawa J., Miyao H.; second row: Miss Pearson, Kashiwabara K., Enomoto J., Koshihara S., Hyosaka K., Inouye M.

## Aquila Staff

Starting to work late in May, under the advisorship of Miss Dorothy Pearson, was a very enthusiastic and hard working annual staff led by Editor-in-Chief Mollie Yasutake.

The name Aquila was chosen as the name of the yearbook from among the many names entered in the name contest sponsored by the staff.

The picture taking was the major difficulty which held back the progress of the Aquila. The priorities on films and various other handicaps were severely felt. Other than that the Aquila made rapid progress.

Since this was the first edition of the Aquila, and time was short, the staff was faced with a tremendous task.



ANNUAL ADVISORY COMMITTEE  
 Front row: Hasegawa E., Sakamoto E., Nomiya S., Iwasaki J., Yamanaka M., Sekiguchi N., Takao M., Kimura S., Kano H., Yoshizumi A.  
 Second row: Moriki S., Kajita M., Hiuga K., Hirabayashi R., Itano E., Hamatani N., Shigeno F., Tanaka Y., Akita N., Yoshizaki G., Hijikata R., Kamikawa L.  
 Third row: Tamaki T., Okuda W., Kitahara M., Sugimura B., Seto L., Sakita G., Sato A., Hada Y., Tsujikawa S.  
 Fourth row: Katagiri G., Kurahara C., Kanda J., Ishida J., Masuoka T., Nakanishi S., Sato K.



TRI-STATER STAFF  
 Front row: Miss Smoyer, Yoshizaki G., Uratsu M., Hayashida B., Sakita G., Nakamura M.  
 Second row: Oya M., Sofye Y., Morioka L., Kawano N., Niiyama M.

TRI-STATE MANAGING STAFF  
 Munekawa S., Yoshikawa E., Iwamoto G., Matsuda T., Nobie Kodama

TRI-STATER STAFF  
 Front row: Saito M., Sekiguchi N., Akita N., Hasegawa E., Yasutake M., Ota R.  
 Second row: Kanda J., Inouye M., Abe M., Kadoyama M., Fukuhara K., Yoshizumi A., Enomoto J.

## The Tri-Stater Staff

The 1942-1943 Tri-Stater staff managed to publish their first edition of the school paper on October 5 under the editorship of Nobie Kodama.

During the first quarter the staff operated under very severe and trying conditions, resulting from insufficient facilities and inexperienced workers.

By borrowing the mimeograph machines from the Administration Building and *The Tulean Dispatch*, the staff struggled valiantly but successfully in order to have a two-page paper issued about once a month.

The third quarter brought about many improvements. The advanced journalism class took over the managership of the Tri-Stater and published a four-page paper weekly.



TRI-STATER REPORTERS  
 Front row: Sato M., Kitahara M., Hiraga B., Okuda W., Sasaki T., Tanigawa G.  
 Second row: Yoshino N., Manji G., Nakamura S., Kawakubo T., Toki Y., Nakamura K.  
 Third row: Namba L., Shigeno F., Kumagai M., Mogi Y., Motomatsu G., Hayano H.



*Tri-State Strutters*

First row: Sakuma H., Ohashi K., Yamanishi M., Yorita P., Yamamoto S.  
Second row: Makiyama S., Suguro S., Takasugi A., Ogino Y., Igarashi R., Kawakami S., Kiyokawa S.

*Senior Speech Club*

First row: Mochizuki M., Sasaki T.  
Second row: Hasegawa E., Abe M., Inouye M., Kodama N.  
Third row: Shintaku A., Koshiha S., Yasutake M., Hayano H., Yamasaki L.

*Needle Art Club*

First row: Hamatake N., Ishimoto A., Toyoda M., Nakao A., Nakamura J., Furukawa R.  
Second row: Shimotori M., Nakanishi T., Otsubo M., Ike S.  
Third row: Noguchi M., Tanabe M., Ishida J., Miss M. Dickinson, Taketa H., Omura L., Nakagawa M.

*Zoology Club*

Sakurada T., Tamiyasu M., Miss A. Erickson, Numata J., Matsuda A.

CHEMISTRY CLUB

First row: Arima G., Ishida J., Masuoka T., Kiyono M., Yamaguchi E.  
Second row: Nomiyama S., Yamanaka M., Idehara M., Uyeda E., Yumibe K.  
Third row: Nomiyama K., Sakamoto E., Ajima M., Tamura C.  
Fourth row: Kubo G., Tamaki T., Matsumoto B., Matsumura A., Sakuma K., Matsui B., Nakanishi S., Mr. Miyamura.



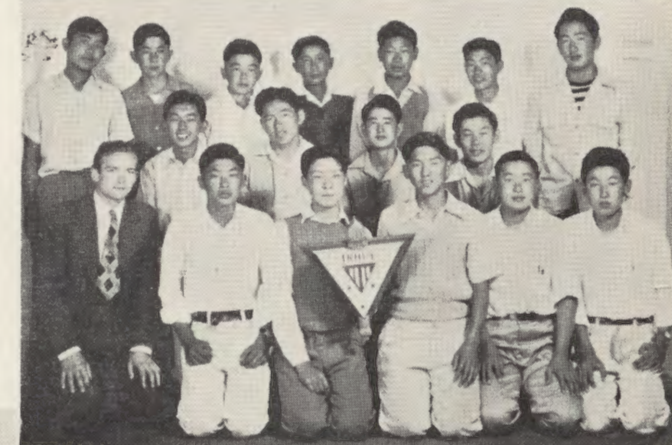
HORIZON GIRLS

Front row: Hoshiwara T., Tamura C., Hamaguchi K.  
Second row: Nishikawa R., Ono L., Niyama M., Hamaguchi T., Urushibata I.  
Third row: Miss Wells, Nakamura S., Yokobe M., Furuta M., Mrs. Kawauchi



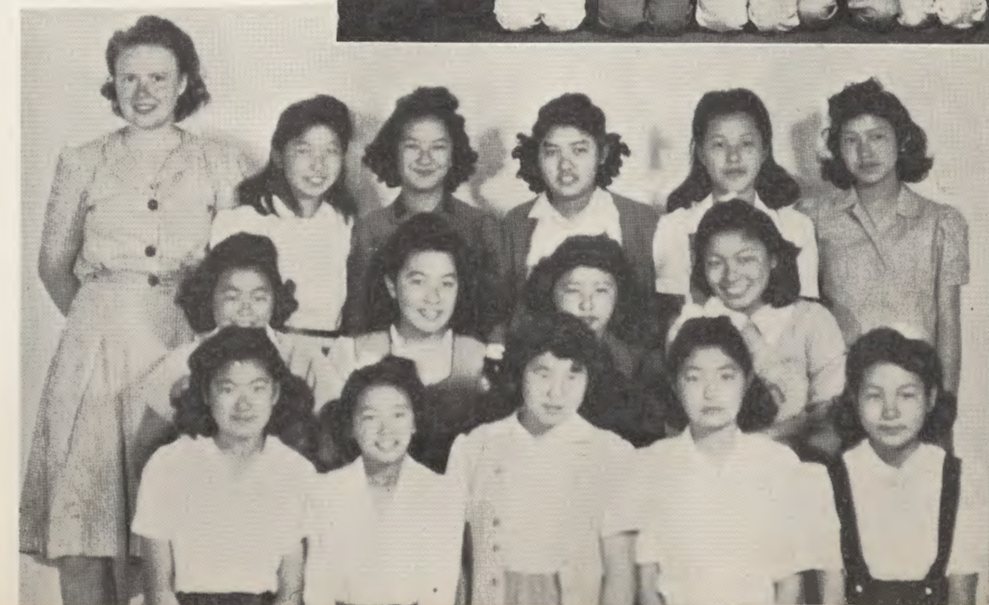
JUNIOR HI-Y

Front row: Mr. Ritter, Iwamasa H., Noguchi K., Shintani K., Nakagawa A., Kiyono S.  
Second row: Fukai R., Nishikubo G., Kumasaka Y., Nakamura W.  
Third row: Kumasaka H., Matsuda A., Otani H., Fukuzawa B., Kajihara H., Takagi C., Hasegawa P.



JUNIOR CAMPFIRE GIRLS

Front row: Yamashita F., Yamanishi M., Terashima D., Urushibata F., Ishihara M.  
Second row: Yoshikai R., Kumagai S., Kawahisa K., Kawata Y.  
Third row: Miss Billings, Kosai M., Nakagawa S., Kosai M., Morimoto M., Hayashi L.





### *Tri-State Thespians*

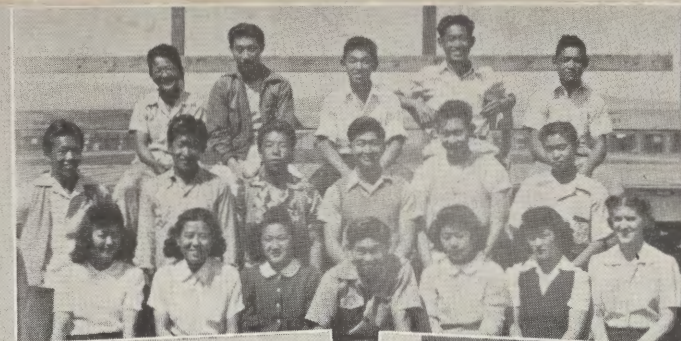
First row: Miss J. Smoyer, Akita N., Mitsutome K., Hasegawa E., Sasaki T., Kurahara C., Hasegawa L., Mukai A.  
 Second row: Kiyono M., Hirabayashi R., Tsuchiya M., Sakamoto E., Goishi M., Hijikata R., Saito D., Nakagiri A., Hayashi B.,  
 Third row: Hiraga G., Aredas D., Motomatsu G., Kanda B., Sasaki A., Kamikawa L., Uyetake J., Ishikawa J.  
 Fourth row: Arima G., Kiyono M., Takahira A., Nakagiri K., Oya M., Yasutake M., Sasaki J., Saito M.

### *Red Cross*

Front row: Nakagiri A., Shintaku A., Katagiri D., Norimatsu M., Hayashi B., Namba L., Mrs. Schaaf, Miss Hartt, Miss Carter, Kato K.  
 Second row: Kamikawa L., Ohashi M., Yoshikawa S., Inouye M., Hirabayashi R., Iwasaki J., Kuroko J., Sato T., Hamaguchi T., Nomiya K., Yoshimoto N.  
 Third row: Ishihara M., Abe F., Mori P., Morioka M., Nakamura M., Uyetake J., Nakao K., Makishima S., Mano K., Masui S., Yoshida G., Fukuhara G.  
 Fourth row: Isaki N., Kinoshita M., Yoshizuka R., Takemoto R., Nishimi R., Kajita S., Hasegawa P., Numada J., Tsujikawa S., Oki M.

### *Speaker's Bureau*

Front row: Sasaki T., Kiyokawa K., Hayano H., Kuki T., Kurahara C., Oshika J., Katagiri G.  
 Second row: Arima G., Yamamoto C., Abe M., Inouye M., Hasegawa E., Yasutake M., Hamai T., Suyehiro G.  
 Third row: Akita N., Yoshizaki G., Hijikata R., Oto T., Mr. Starmer, Aredas D., Ajima M., Kajita E.



### *Art Club*

First row: Miss C. Kuroiwa, Kuki T., Yoshida K., Miyazaki J., Masuda G., Nishikawa R., Mrs. C. Norman.  
 Second row: Sakurai H., Kurotori T., Noguchi M., Okamida G., Kanemoto A.  
 Third row: Dote B., Sakayeda G., Nagaishi H., Nakamura N., Ishihara S.

### *Tri-State Slammers*

Front row: Hasegawa L., Aredas S., Asakawa M., Hijikata R., Yoshikawa E., Aredas D., Hasegawa E., Yasutake M.  
 Second row: Muneawa S., Matsuda T., Miss Kirven, Koshiba S., Yumibe T.

### *Commercial Club*

Front row: Kinoshita R., Namba T., Ono L., Kano H., Ishida C., Uyetake J., Oto T., Miyao H., Kakiuchi Y., Uchiyama H.  
 Second row: Oki A., Yoshioka Y., Shirasu J., Miyao I., Goishi L., Miss Manji, Mr. Mizutani, Mano K., Hamaguchi K., Kimura S., Kajiura M.  
 Third row: Sonoda M., Nishimoto D., Yamamoto A., Kato M., Okada M., Morimoto A., Yamada B., Ono H., Uyeda T., Sano Y.  
 Fourth row: Tamura M., Kitajo J., Kinoshita M., Osaki A., Kato E., Yoshino N., Kono M., Hatano G., Goishi M., Kimura U., Tsugawa T., Oto M.



**MUSIC CLUB**  
 Front row: Nagao K., Muraoka C., Tenma R., Takehira A., Saito D., Tanaka N., Tamura M., Masui S., Nakamura G., Kimura S.  
 Second row: Miss Clark, Uyeda E., Ishida S., Makishima S., Sakayeda L., Habu K., Sato L., Kinoshita M., Kawano H., Kimura H.  
 Third row: Nakamura N., Fujii V., Fujii A., Mizoguchi S., Taira M., Tsuchiya M., Yamanaka M., Takehira J., Nakagiri K., Murakami M.



**COSMETOLOGY**  
 Front row: Tanaka D., Nakagawa K., Miss Tsujikawa, Osaki A., Kinoshita E.  
 Second row: Oda L., Tomita R., Hishinuma K., Miyao H., Miyao I., Goishi L., Joe M.  
 Third row: Sadamori E., Tameno R., Nakamoto K., Sakai S., Nakamoto K.



**EXCALIBUR CLUB**  
 Front row: Mr. Sakiyama, Umata A., Kuki T., Uwate M., Hirotsu T., Hara Y.  
 Second row: Sakurai K., Nishi J., Yoshikawa A., Oshita E., Kajita Y., Goi M.  
 Third row: Sakurai H., Okano I., Tanizaki M., Yamasaki T., Tanaka K.



*Home Economics Club*  
 First row: Nakamura M., Kawano N., Kimura S., Masunaga F., Masui S., Naname L., Yoshii R., Nakahira R., Kimura H.  
 Second row: Yamanaka K., Tanaka D., Yamanishi M., Miyamoto H., Sugaro M., Kosai M., Miyagishima M., Yoshino C., Miss Burns.  
 Third row: Yamada F., Morinaga M., Terada M., Toda M., Nakamura F., Mano K., Ishida C., Natsuhara S., Mizokawa M., Takahashi C.



*Senior Hi-Y*  
 First row: Hanada H., Nakaoki J., Arima G., Osuga J., Sasaki T., Sugiyama A., Kiyono M., Kanda J., Mr. A. Ramey.  
 Second row: Ishida J., Munekawa S., Sasaki J., Nakanishi H., Nakanishi T., Koshiba S., Nakanishi S., Kurahara C., Yoshikawa E.  
 Third row: Nakagawa A., Fukai R., Iwamoto G., Okamura F., Katagiri G., Sato S., Sakita G., Ohmura P., Hiraga G.

*Nature Guides Club*

Front row: Noguchi K., Fujimoto F., Kuzuzawa B., Kubo S., Arima J., Sako S.  
 Second row: Tanaka R., Uyeda C., Nishimura T., Higaki J., Fukui B., Owada Mr. Swetek.





SCHOLARSHIP SOCIETY  
 Front row: Itano E., Akahoshi S., Oto T., Himoto S., Kiyono M., Koshiba S., Mano K., Narahara H., Kumagai E.  
 Second row: Tsuchiya M., Yoshioka Y., Yoshi R., Uyeda T., Hayano H., Akita N., Nakamura M., Nomiya K., Kajita M.  
 Third row: Sakamoto E., Goishi M., Aredas D., Okada M., Morimoto A., Masui S., Hamada A., Kukumori S., Kanda B.  
 Fourth row: Sato K., Mochizuki M., Katagiri G., Itano M., Sato A., Adachi K., Nishikubo G., Kosai Y., Tanaka R.



SCHOLARSHIP SOCIETY  
 First row: Kageta S., Inouye Miyuki, Aima G., Kanda J., Muneakawa S., Hasegawa E., Yasutake M., Mr. R. Cheek.  
 Second row: Morinaga M., Sekiguchi N., Yeda S., Inouye Miyoko, Kuki T., Matsuda M., Kiyono K., Fujii F., Jinguji K., Hasegawa B.  
 Third row: Niiyama M., Hamaguchi K., Oya M., Hamaguchi T., Tamura C., Kawano T., Matsumoto M., Nakamura S., Kawano H., Toki A., Hashimoto K.  
 Fourth row: Abe M., Norimatsu M., Nakanishi S., Ohmura P., Fukai R., Tanabe B., Uratsu M., Sugiyama A.



ORCALINGTON  
 Front row: Shibahara K., Fujioka R., Horiuchi K., Kawasaki K.  
 Second row: Kamihara T., Hamada H., Ichiba S., Yoshida G.  
 Third row: Sasaki D., VanBuskirk M., Tomita R., Tomita L., Mayeda R.  
 Fourth row: Miss Carter, Mrs. VanBuskirk.



SENIOR GIRL RESERVES  
 First row: Taketa M., Uchiyama H., Inouye B., Manji G., Iwasaki J., Omura R.  
 Second row: Kano H., Sano Y., Sato T., Tomolke H.  
 Third row: Toki Y., Norimatsu M., Nakanishi T., Iwasaki T., Mrs. Schaaf, Okada M., Hasegawa B., Kokuichi Y.

*Girls' Senior Glee Club*



*Boys' Senior Glee Club*



*Junior Girls' Glee Club*



GIRLS' SENIOR GLEE CLUB

First row: Miss Lum, Hiuga K., Hirabayashi R., Sasaki A., Tamura M., Tanaka N., Ito D., Tsurui S., Honda D., Ohashi M., Kumasaka R., Nakagiri K., Toshiko K., Kumagai M. Second row: Habu K., Sakaeda, L., Mogi Y., Aredas D., Kaneko L., Tsujisaka M., Keikoan Y., Hijikata L., Fujiye R., Hayashi M., Fujihara M., Fujihara G., Hirata F., Omura G. Third row: Hyogo M., Abe J., Takano B., Yamada K., Kimura H., Kawano H., Kinoshita M., Kawata N., Uyetake M., Yuasa A., Takagi S., Sato L., Mitoma H., Takagi Y., Nakamura G. Fourth row: Kozumi E., Ishii M., Yamashita M., Asoo L., Kaname M., Otsuji M., Yoshizumi A., Tsuda Y., Tenma R., Nomura D., Iwasaki J., Aredas S.

BOYS' SENIOR GLEE CLUB

Front row: Iwasa G., Iida T., Maeda T., Yoshizuka J., Hada Y., Mochizuki M., Hitomi R., Hiraga B. Second row: Miss Clark, Nakagawa A., Sugimura B., Koshiba S., Kitahara M., Matsumoto K., Koyasako S., Takemoto S. Third row: Shintaku A., Tomita K., Fujimoto T., Morisato G., Tanabe A., Okuda W., Kageyama W., Nishimoto H., Kawano J.

JUNIOR GIRLS' GLEE CLUB

First row: Yoshimoto J., Kawamoto M., Ogata S., Muramoto J., Nakao A., Oki H., Taketa H., Ishida J., Katsumata J., Nishimura A., Okamoto R., Matsushima M., Yoshizuka G., Kanemoto A., Oshika F., Morisaki P. Second row: Miss Z. Clark, Miss H. Morinaga, Nakamura J., Sunada G., Yamada E., Matsumoto Y., Tomita L., Fukushima D., Haratani M., Suguro S., Kubo M., Ike M., Kiyono S., Kinoshita M., Nakai M., Uno H., Hamada M., Hiuga B. Third row: Ishii S., Yamamoto K., Fukikawa B., Ajima R., Tamiyasu T., Fukami M., Usui M., Hiraika K., Ishibashi R., Makishima S., Ishida S., Imagawa M., Tokunaga P., Mio R., Tokunaga R., Furushio L. Fourth row: Usui T., Yoshii J., Furukawa J., Yoshizumi S., Sato J., Tomita R., Nakatani L., Sako M., Sasaki D., Kawaki K., Horiuchi K., Fujioka R., Kusachi H., Hishikawa Y., Urushibata E., Shibahara K. Fifth row: Hamada H., Kamihara T., Sakumura A., Fujita A., Yamaji F., Ikenoyama K., Washizu N., Nishizaki A., Tomita J., Furukawa M., Endo L., Tamiyasu S., Tamiyasu H., Ishihara M.



BAND

First row: Hida E., Hida A., Nakai C., Matsumoto M., Nishimoto H., Frost G., Motoyama H., Yoshimoto W., Mukai J., Ichikawa B.  
 Second row: Takahashi Y., Nakai C., Kiyokawa K., Tsujikawa S., Sasaki T., Doi J., Murakami R., Matsuda T., Nakamura J.  
 Third row: Morimoto P., Ishimoto N., Suzuki F., Hatamiya R., Saito K., Kishimura H., Fujii W., Motoyama B., Mr. R. Cheek.

## Music Department

Lead by Mr. Raymond Cheek and his assistant, Mr. Yuichi Takahashi, the school band and orchestra has acquired a prominent standing in the new school organization in spite of the numerous inevitable handicaps. Over 100 performances have been made by this department alone, including solos, group entertainment, assemblies, and concerts.

The Senior Boys' and Girls' Glee, under the direction of Miss Maryette Lum and Miss Zell Clark, have also been very successful.

The highlights of the Music Department were participation in the Fall and Spring Music Concerts, Open House, Young Peoples' Christian Conference, and the Easter Pageant.



ORCHESTRA

First row: Richter J., Inouye M., Nakatani L., Miyahara F., Kodama Y., Osaki M., Fujioka K., Hamada J., Yoshida E., Yokote D., Kanemoto A.  
 Second row: Matsuda T., Kawano H., Fujii V., Fujii A., Miyao H., Tenma R., Uyeda E., Maki shima S., Ishida S., Tanaka R., Fukuda J.  
 Third row: Takahashi Y., Kimura H., VanBuskirk M., Mizoguchi S., Muraoka C., Kaname L., Yoshimoto J., Tsuchiya M., Sakashita M., Mr. R. Cheek.



## Basketball

CHAMPIONS--JUNIORS

First row: Tomita B., Kiyama T., Tsujisaka J., Mitsui S., Yoshimura S.  
 Second row: Keiunji M., Kashiwabara K., Kiyama J., Fukuda Y., Kajikami J.  
 Third row: Goto G., Okuda W., Kurahara L., Mayeda M., Fujira G.

CONSOLATION WINNERS--  
SOPHOMORES

Sitting: Ota T., Mizouye J.  
 Standing: Tanaka G., Enkoji S., Muraki S.

FRESHMEN

First row: Watanabe B., Hyosaka A., Hosokawa T., Fujimoto F., Iwata R.  
 Second row: Okamura T., Terada N., Takemoto S., Iwata H., Higaki J.

SENIORS

Sitting: Ota H., Hayashida B., Seto L.  
 Standing: Enomoto J., Matsui G., Mochizuki M., Sugiyama A.

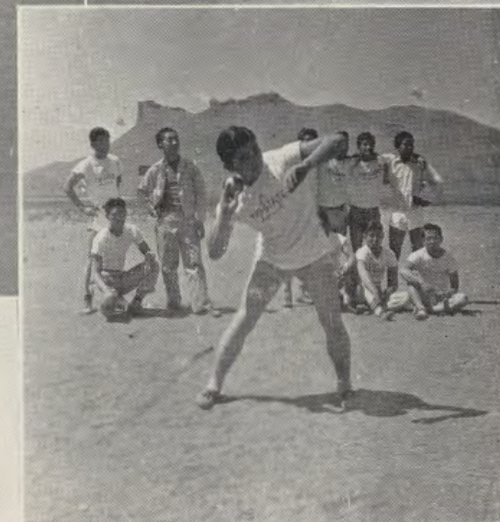


## Boys' Sports

Football was the first sport which was played by the Tri-Staters. Nearly all students participated in touch football in their respective P. E. periods.

The basketball highlight of the season was the two-day interclass tournament under the supervision of the P. E. department. The juniors, coached by Jim Kajikami, captured the tourney by a comfortable margin. The consolation prize was taken by the sophomores under the coaching of Tad Matsushita. (Each of these two winners received a trophy with the player's names on them.)

With the arrival of new baseball equipment, the Boys' League sponsored the successful softball interclass tournament. By virtue of a win over the freshmen, the juniors went on to win the championship by again defeating the seniors 6 to 2.



RELAY TEAM  
J. Nakaoki, B. Matsumoto,  
C. Kurahara, L. Kurahara,  
S. Yoshimura

CUP WINNERS  
L. Kurahara, K. Oda, T. Fujino, Mgr.

DISTANCE RUNNERS  
Yosh Hada, Aki Hada

SHOTPUT  
Norman Yasui



FIRST AID

## Girls' Sports

Although lacking a gymnasium, the coeds of Tri-State were all out for sports. Under the leadership of Mrs. Stephen Swetek, exciting tournaments were held which proved to be a lot of fun for the girls. In case of bad weather the girls played popular indoor games. Social dancing was held for dance enthusiasts once a week.

Also, to meet any emergencies which might arise, the Senior and Junior Coeds were required to take first aid. Their teachers were Miss Ruby Tanabe, Miss Ruth Abe and Mr. George Taketa. Students who successfully completed the course were given first aid certificates.



SOCIAL DANCING



VOLLEY BALL

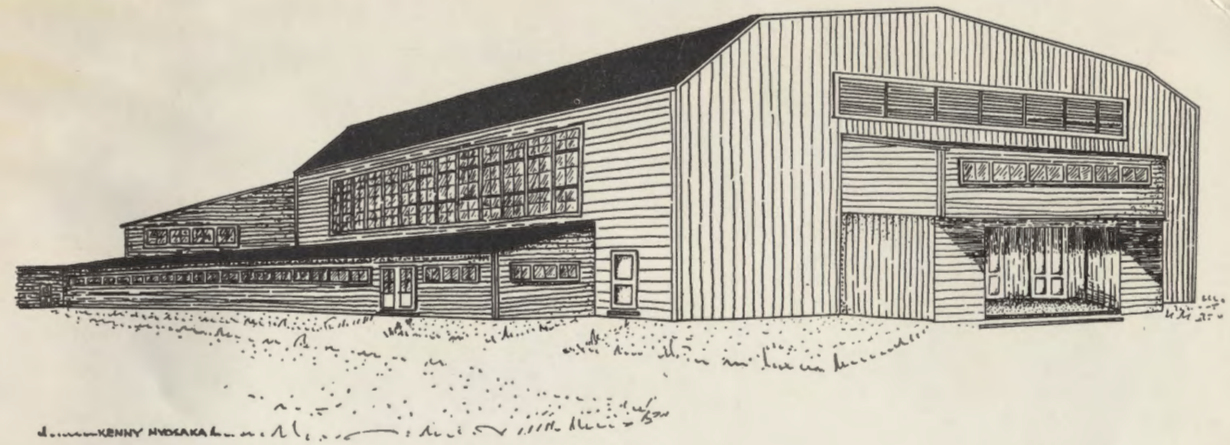


BASKETBALL



Kelly

# FEATURE



## *School History*

Out in a desolate sand plateau in Northern California stands a row of 20 tar papered barracks, our Tri-State High School which opened its doors to 2400 students on September 14, 1942. In its pioneer days the classrooms were bare but as the weeks rolled by, stoves, tables, benches, books, blackboards and other school equipment were provided, thus bringing about more of a school atmosphere.

On October 5 the school paper, later named the Tri-Stater, made its first appearance. About the same time the school received its present name of Tri-State, as well as its school symbol—the golden eagle, and the colors blue and gold.

The first school dance, "School Daze Swing," was held on October 15. The "Turkey Jive" was the only other social held during the first quarter. School dances were held in different mess halls in the colony.

Probably the most notable event in the fall of 1942 was the potato harvest. At this time the project farm, suffering also from the nation-wide manpower shortage, called on Tri-Staters to aid them in their potato harvesting. The Tri-Staters wholeheartedly pitched in for the whole month of October.

With such a start, Tri-State ended its first quarter on December 24, with a Christmas vacation of one week before the second quarter.

Evidence that Tri-State was to practice democratic principles was shown when a constitution was drawn up for student government. Student body elections were held on January 14, 1943. Edward Yoshikawa was elected student body president.

Socials, clubs, and classes were being organized and activities were getting into full swing when school was closed from February 9 until March 25 for the colony-wide registration.

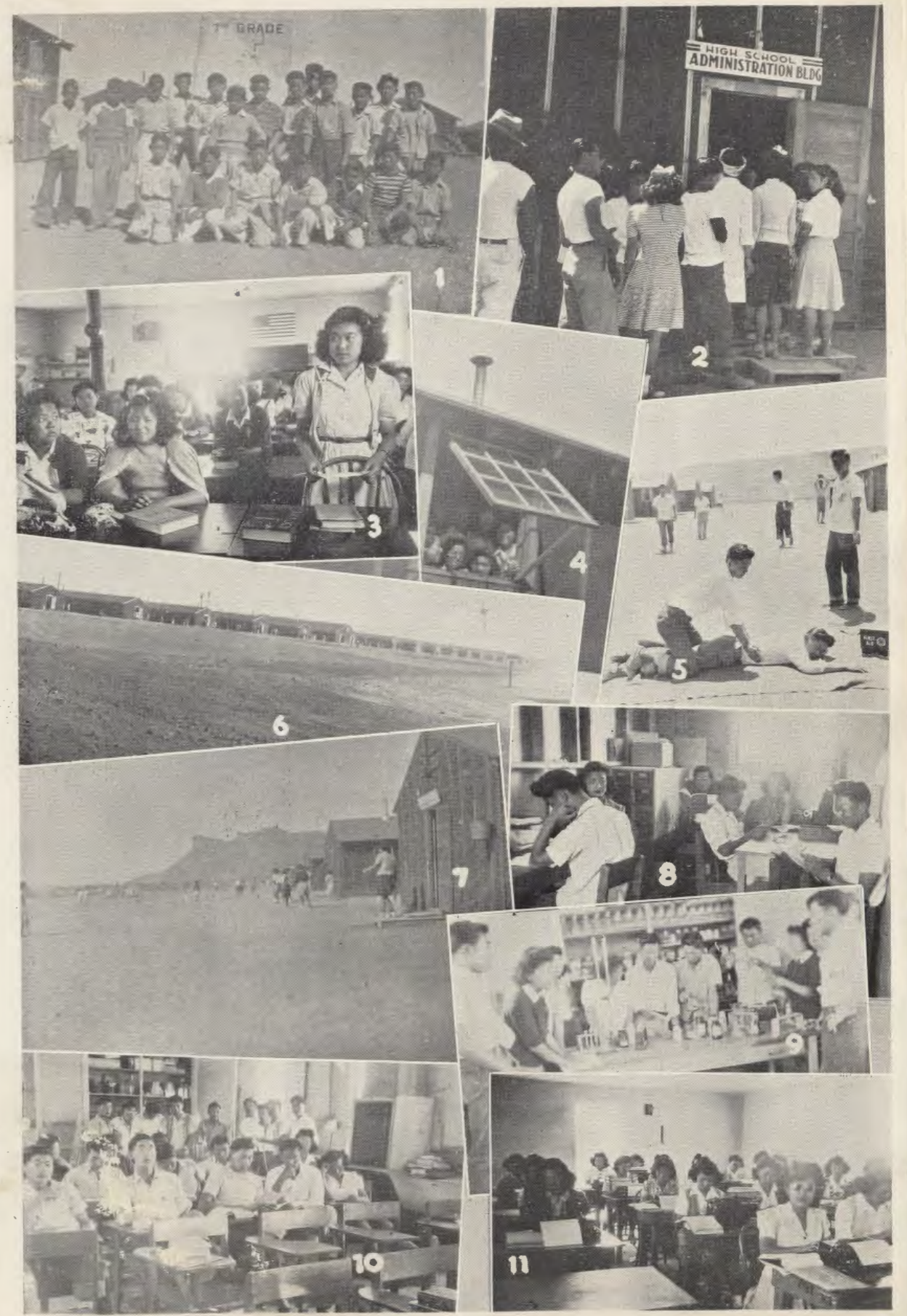
After this vacation, a "Hello Day" was held on April 2 to create a more friendly atmosphere among its students. At this time the classes, which elected their officers on February 9, were given their first opportunity to function as a group. Tentative plans for a school yearbook were also underway about this time.

Perhaps the biggest, the most successful, and the most memorable school event was the "Kanaka Carnival," which was held on April 30 on the school campus. This carnival was held for the purpose of raising money for the Aquila. Each organization in school contributed by participating in various concessions. King Conrad Kurahara and Queen Teruko Yumibe with Prince George Hatamiya and Princess Elsie Eto reigned over the day.

The third quarter was filled with one activity after another. Rallies were held weekly; several inter-class track meets were sponsored by the Boys' League, a four-page Tri-Stater was distributed every week; student activity card sales soared; annual sales were reopened; a scholarship fund drive went into full swing; and campaign, election, and inauguration for next year's student body officers were held. Highlighting the social events of the year were the Junior Prom and the Senior Ball.

With such a hectic but memorable year, Tri-State closed its doors to its students for the 1942-1943 school term on July 16. Next fall a brand new and modern high school will be opened.









## FRESHMAN BOYS

Abey, George  
Adachi, Akio  
Akiyama, Charles  
Akiyama, Henry  
Arima, James  
Asai, Itsu  
Doi, Joshua  
Date, Ben  
Enkoji, Archie  
Enomoto, Shigeru  
Fujii, Alfred  
Fujii, Robert  
Fujimoto, Frank  
Fujita, Frank  
Fukuda, Joseph  
Fukui, Ben  
Fukui, Sumio  
Fukuzawa, Benny  
Funakoshi, Tadashi  
Go, Frank  
Hamada, Itaru  
Hamatani, Osamu  
Hatamiya, Roy  
Hatamiya, Tom  
Hatano, Asayuki  
Hattori, Nobuyuki  
Higaki, Jiro  
Hikawa, Frank  
Hikawa, George  
Hirabayashi, Dan  
Hirai, Masashi  
Hirata, Yukio  
Hitomi, Dick  
Hitomi, Ronald Kenji  
Horio, Fred  
Hoshisaki, Tsuru  
Hosokawa, Tamotsu  
Hyosaka, Alfred  
Hyosaka, Sumio  
Imagawa, Thomas Takashi  
Ishibashi, Roy  
Ishihara, Sam  
Ishimoto, Norman  
Itano, Masashi  
Iwama, Hiroshi  
Iwata, Herbert  
Iwata, Roy  
Joe, Takaji  
Kajita, Haruo  
Kajihara, Harry  
Kajita, Sutter  
Kajita, Yoshimi  
Kakiuchi, Minoru  
Kamada, John  
Kamihara, George  
Kanemoto, Albert  
Kashiwagi, George  
Kataoka, Dick  
Kato, Masao  
Kawamoto, Dick  
Kawano, Ray  
Kejunji, Hideo  
Kinoshita, Shoji George  
Kishimura, Isamu  
Kono, Norman  
Kosai, Algo  
Kouchi, Kaz  
Kubo, Shoji  
Kubota, Fred  
Kumano, Hiromi  
Kumasaka, Hisashi  
Kumasaka, Yukio  
Kyono, Susumu, Sue  
Maeda, Sam  
Maekawa, Bob  
Mano, Toshio  
Matsubara, Donald  
Matsuda, Arthur Toru  
Matsumoto, Ben  
Matsumoto, Lew

## EIGHTH GRADE GIRLS

Abe, May  
Abe, Setsuko  
Baba, Chiyoko  
Fujihara, Mary  
Fujimoto, Sueme Betty  
Fujioaka, Kimiko  
Fujioaka, Rosie  
Fujita, Amy  
Fukuhara, Sada  
Fukushima, Doris  
Fujihara, Grace  
Furushio, Lilly  
Hamada, Helen  
Hamada, Margaret  
Haratani, Mitsuru  
Hasegawa, Misuzu  
Hayano, Kazue  
Hayashi, Lillian  
Hayashi, Mitsuko  
Hiraga, Louise  
Hirata, Fusako  
Hishikawa, Yoko  
Hiuga, Betty  
Horio, Yumiko  
Horio, Marian  
Horiuchi, Kimi  
Ichiba, Shizu  
Ike, Masako  
Imagawa, Mary  
Ishimura, Miyoko  
Ishii, Sally  
Ishikawa, Hisako  
Ishimoto, Mary  
Jamura, Florence  
Kagawa, Eiko  
Kamihara, Emiko  
Kanemoto, Amy  
Katsumata, June  
Kawasaki, Katherine  
Komoto, Rosie  
Kowata, Yoshiye  
Kinoshita, Marie  
Kodama, Yuri  
Kosai, May  
Kosai, Mitsuko  
Kumagai, Sumiko  
Kusagi, Hazel  
Kyono, Sakaye  
Maeda, Alice  
Makiyama, Sakie  
Matsui, Rose  
Matsumoto, Marian  
Matsumoto, Yukiye  
Matsushima, Mary  
Mio, Rose  
Nakae, Miyo  
Nakagawa, Setsuko  
Nakamoto, Mizue  
Nakamura, Bonnie  
Nakamura, Helen  
Nakamura, Setsuko  
Nakatani, Lily  
Narahara, Asako  
Nishimoto, Nancy  
Nishimura, Arlene  
Nishizaki, Alice  
Ohara, May  
Okamoto, Rae  
Okubo, Miyoko  
Omura, Anne  
Ono, Hanako  
Miyagishi, Rose  
Miyahara, Florence  
Miyamoto, Sachiko  
Mizusaki, Yoshiko  
Morimoto, Masako

## EIGHTH GRADE BOYS

Abe, Kats  
Akita, Fred  
Akiyama, Homer  
Fujii, Lincoln  
Fujii, Masatoshi  
Fujii, Wesley  
Fujimoto, Mitsuo  
Fujishin, Ike  
Fukui, Jimmy  
Fukushima, Kay  
Furuta, Kenji  
Hada, Letto  
Hasegawa, Mark  
Hida, Allan  
Hirata, George  
Honda, Jack  
Honda, Yoshio  
Hoshiwara, Isao  
Ichikawa, Karl  
Idehara, Ray  
Iida, George  
Ikemoto, James  
Inouye, Takeharu  
Ishihara, Matsuo  
Ito, Kaneo  
Iwasaki, John  
Kamikawa, Joe  
Kataoka, Jack Masayuki  
Kato, James  
Kato, Masayoshi  
Kavano, Tom  
Kishaba, Albert  
Kishi, George  
Kishimura, Hiroshi  
Kitaura, Tamao  
Kono, Takashi  
Koyama, Shiz  
Kubo, Akira  
Kumano, Kumio  
Kuratori, Isamu  
Manji, Billy  
Matsubara, Ray  
Matsui, Miki  
Matsune, Haruo  
Matsuoka, Noboru Norman  
Matsura, Toshio  
Miho, Jim Minoru  
Miura, Akio  
Miyamoto, Taiji  
Miyasaki, Jim  
Mizoguchi, Mas  
Momii, Noboru  
Morinaga, Jimmy  
Morishige, Takeshi  
Morita, Joe  
Morita, Junior  
Morita, Robert  
Moriya, Toshiharu  
Mukai, Jackie  
Munekawa, Roy  
Nakagawa, Akira  
Nakahira, Ben  
Nakashima, George  
Nakashima, Jack  
Nasu, Kenichi  
Nishimi, Ralph  
Nishimoto, Katsumi  
Nida, Henry  
Okada, George

Okamura, Takashi  
Okano, Iwao  
Okazaki, Tom  
Okura, Fred  
Okune, Joe  
Ono, Yoshi  
Orite, Yukio  
Oshima, Keiso  
Ota, Bill Kiyoshi  
Otani, Hod  
Otani, Noboru  
Owada, Eddie  
Owada, John  
Owada, Saburo  
Oyama, Marvino  
Oyanagi, Nobukazu  
Ozawa, Leslie  
Sakamoto, Willie  
Sakashita, James  
Sakatani, Kaneo  
Sako, Shoji  
Sakuma, Kiyoshi  
Sakurai, Howard  
Sasaki, Fumio  
Sasaki, Louis  
Sasaki, Robert  
Sato, Yoshi  
Shimada, James  
Shimono, Sam  
Shimosaki, Gene  
Shintani, Kazumi  
Shiratsuki, Tsutomu  
Soga, George  
Sumada, Mits  
Sumida, Tatsuo  
Suyama, Minoru  
Takasugi, Mitsuo  
Takasumi, Fred Norio  
Takemori, Masaki  
Takemoto, Shiro

Tanaka, Eddy  
Terada, Nobuo  
Terashima, Frank  
Togami, Kazumi  
Tomita, Yoshinori  
Tomolke, Yutaka  
Tomaya, Raymond  
Tsujioka, Shizue  
Tsujioka, Grace Takeko  
Tsujioka, Teruko Janet  
Tsuruda, Tom  
Uyeda, Charles  
Uyeda, Jim  
Wada, Yoshikiyo  
Wakamatsu, Tommy  
Washizu, Masaaki  
Watanabe, Bob  
Yamada, Ben  
Yamada, Isamu  
Yamada, Matsuo  
Yamane, Tommy  
Yamasaki, Henry  
Yamasaki, Satoru  
Yamashita, Masao  
Yasuda, Toshio  
Yokota, Tom  
Yonemura, Harry  
Yoshikawa, Albert  
Yoshikawa, Hubert  
Yoshikawa, Marvin  
Yoshimi, Isamu  
Yoshimoto, Akito  
Yumikura, Eddy

Tokunaga, Rose  
Tomita, Lillian  
Tomita, Ruby  
Tsuwaga, Sallie  
Tsujiyama, Grace  
Tsujiyama, Frances  
Uno, Hiroko  
Urushibata, Fumi  
Uyeda, Bessie  
VanBuskirk, Marie  
Wada, Chiyoko  
Washizu, Nobuko  
Yamada, Kay  
Yamaji, Frances  
Yamanishi, Myrtle  
Yoshida, Kazuyo  
Yamasaki, Matsue  
Yamashita, Fumiko  
Yasui, Grace  
Yokota, Ayako  
Yokoyama, Yukiye  
Yoshida, Grace  
Yoshizaki, Ruby  
Yoshizuka, Grace  
Yumibe, Kimiko

Okano, Bob  
Okimura, James  
Ono, Toshio  
Oshima, Hideo  
Ota, Jack  
Otsuji, Richard  
Saito, Fred  
Saito, Koichi  
Sakauye, Jiro  
Sakuma, Ted  
Sasaki, Ernest  
Sasaki, Harvey  
Sato, Ben  
Sato, Eddie  
Shikasho, Masami  
Shimoyama, Joe  
Shinosaki, Bernard  
Suhama, Hosh  
Tabara, Tommy  
Taira, Junichi  
Takemoto, Robert  
Tamamoto, Yoshio  
Tamura, Akira

Tamura, Frank  
Tanabe, Dalichi  
Tanabe, James  
Tanihara, Johnnie  
Tanikawa, James  
Tamura, Kazuo  
Toyota, Tomo  
Tsuchida, Sam Minoru  
Tsuda, Jack Shizuo  
Tsujii, Tom  
Tsujii, Tadao  
Uyeda, Jesse  
Uyeno, George  
Wakamatsu, Fred  
Watanabe, Harry  
Watanabe, Shinichi  
Yamamoto, Ben  
Yamamoto, Noboru  
Yamasaki, Masaru  
Yoshida, Saburo  
Yoshimoto, Willie  
Yoshizuka, Richard

## SEVENTH GRADE GIRLS

Kiyoko  
Kazuko  
June  
Kagiyama, Mary Satoko  
Kajitani, Harriet Kikuko  
Kajitani, Clara Miyuko  
Kamikawa, Emiko  
Kanaya, Sumiko  
Katayama, Emily  
Kawakami, Miko  
Kojima, Webia  
Konishi, Kazue  
Kitahara, Kazuko  
Kiyama, Jane Shizue  
Kosobayashi, Mieke  
Kubo, Keiko  
Maeda, Ruth Etsuko  
Makishima, Clara Tamaye  
Matsui, Aiko  
Morita, Satsuki Mae  
Motomatsu, Reiko Nancy  
Murakami, Nancy  
Muranaka, Jean  
Muramoto, Jean  
Murakami, Mary  
Mutow, Aiko  
Nakagawa, Kiyoko  
Nakamura, Jeanne  
Nakamura, Mitsuye Lucille  
Nakanishi, Teruko  
Nakao, Alice  
Nakatani, Jean Motoko  
Nakayama, Kazuko  
Niiyama, Keiko  
Nikaido, Rita  
Nishiyama, Noreen Kikuye  
Noguchi, Mae  
Obata, Kayoko  
Olzumi, Annie  
Oki, Grace  
Oki, Helen Kimiko  
Okubo, Betty Kiyoko  
Omachi, Hiroko Joan  
Omachi, Jean Aiko  
Omura, Lily Yoshie  
Omura, May  
Onouye, Keiko  
Miyamoto, Sumiko  
Mizobe, May  
Mizoue, Yoshie  
Mizui, Kiyono  
Mochizuki, Etsuko  
Mori, Pat  
Otsubo, Marian Michiko  
Sakata, Meteko  
Sakata, May Fumiko  
Sakata, Mary  
Sakayue, Mae  
Sakiyama, June  
Sasaki, Mazie  
Sato, Akiko  
Sawai, Molly  
Shida, Margaret  
Shimada, Kazuko  
Shinizu, Mitsuyo  
Shimono, Chiyoko Grace  
Shimotori, Madeline  
Shintaku, Yoshiko  
Sofye, Masako  
Sonoda, Lily  
Sonada, Rosie  
Sugiyama, Helen  
Suhama, Yone  
Suneda, Noruya Grace  
Takagi, Florence  
Takagi, Lucille  
Takao, Jo Ann  
Takayama, Kiyoko  
Takemura, Gloria Sumi  
Taketa, Ayako Rose  
Taketa, Lilly  
Taketa, Sumiye Happy  
Tamaki, Jean  
Tamiyasu, Suzie  
Tamura, Alice  
Tanabe, Florence  
Tanabe, Michiko  
Tanikawa, Eiko Naomi  
Tanino, Takae  
Teshima, Margie  
Tokunaga, Yoshiko  
Tomita, Junko June  
Toyama, Doris  
Toyoda, Masuko  
Toyota, Dorothy Tsuyumi  
Tsuchida, Peggy  
Tsuchimura, Vivian  
Usui, Teruko  
Uyeda, Janet Masuyo  
Uyetake, Toby Tomiko  
Yagi, Ellen  
Yamada, Esther Michiko  
Yamada, Gloria  
Yamada, Takako  
Catherine  
Yamasaki, May  
Yamashita, Esther Teruko  
Yasui, Beatrice Miyeko  
Yasutake, Mary Aiko  
Yokomichi, Setsuko  
Yokota, Martha Masako  
Yokota, Midori Dorothea  
Yokota, Toshiko  
Yokotobi, Sadako Lorraine  
Yoshida, Ethel  
Yoshida, Yoshiko Mary  
Yoshihara, Tsugumi  
Yoshi, June  
Yoshikawa, Isoko  
Yoshikawa, Takako  
Yoshizumi, Sumiko

## SEVENTH GRADE BOYS

Aoyama, Martin  
Arai, Woody Tadomi  
Arima, Lester  
Baba, Francis  
Cook, Quentin  
Frost, Roderic  
Fujihara, Henry  
Fujii, Frank  
Fukeda, Frank  
Fukumori, Ray  
Hada, Mits  
Hamamoto, Hachiro  
Hangai, Noboru  
Harkness, Tom  
Hatamiya, George Shose  
Hayashida, Arthur  
Hayata, Tom  
Hida, Edward  
Higuchi, Nobuo  
Hirabayashi, Teddy  
Yoshito  
Hiraga, William  
Hirata, Eichi  
Hirata, Minoru  
Hisata, Masashi  
Hitomi, Hiroshi  
Hitomi, Mitsuru  
Hoshikawa, Ernest  
Ichikawa, Ben  
Ikeda, Sam Asamu  
Ikeda, Shiki  
Ikeda, Tamiya  
Ikenoyama, Hideo  
Imai, George  
Imamura, George  
Ishihara, Takashi  
Ishizuka, Tadashi Robert  
Ito, Frank  
Iwama, Satoru  
Izuno, Hiroshi Herbert  
Jingui, Masahara  
Kagemoto, Edward  
Kai, Frederick Shizuo  
Kaibeta, George  
Kaihara, Karl Kaz  
Kano, John Nobuya  
Kase, Chikashi  
Kato, Komu  
Kawaguchi, Kay Kazuo  
Kawano, James  
Kawasaki, Frank  
Kawasaki, Jimmy  
Toshimori  
Kelkoan, Shoji  
Kikuchi, Ben  
Kiyokawa, Yoshi  
Kobayashi, Robert  
Kodani, Kiyoshi  
Kondo, Toshi  
Kono, Kenji  
Kono, Tamio Tommy  
Kosai, Masatoyoshi  
Kosobayashi, Shiro  
Koyasako, James  
Kozai, Bobby  
Kozumi, Glenn  
Kobuta, George  
Kuge, Chosei Joe  
Kumashiro, Howard  
Kurozawa, Richard  
Kushida, Takeshi  
Kawate, Dick  
Kyono, Roy  
Kyotani, Gentaro  
Kawasaki, Koichi  
Maeda, Fred Tad  
Makishima, Hideo  
Mano, George  
Masuda, Ken  
Matsunami, Donald Teruo  
Matsuura, Ronald Tokio  
Miyake, Richard  
Mizulre, Yoshiaki  
Morimoto, Paul  
Morimoto, Takashi  
Morioka, Ken  
Morioka, Shigeru Roy  
Morita, Haruo Hirokaga  
Morita, Masa  
Murakami, Joe  
Murata, Jim  
Murata, John Tamaru  
Nagano, George  
Nagao, Shuyo  
Nagasawa, Kenji  
Nakamoto, Fred Hisashi  
Nakamura, Yoshio  
Nakanishi, Tetsu  
Nakashige, George  
Nakashima, James  
Nakazato, Dei  
Natsuhara, George  
Nishiguchi, Mike  
Nishimatsu, William  
Nishimura, Jimmie  
Nishioka, Jim  
Nishizaki, Clarence  
Hiroshi  
Nitta, Clarence  
Nitta, Herbert  
Nomiya, Kazuto Frank  
Nomura, Roy Haruo  
Nomura, Thomas  
Norimatsu, Richard  
Norisada, Joe Masao  
Oda, Fred  
Ogata, Joe  
Ogata, Masaru  
Ogata, Ronald  
Ohara, Bobby  
Okano, Bill  
Ono, Junichi  
Osaki, Makoto  
Ota, Johnny  
Ota, Yoshio  
Otan, Roy  
Oto, Dick Kaoru  
Ozawa, Dick  
Sakata, Shozo  
Sakazaki, Michie  
Sasaki, Dick Moris  
Sasaki, John  
Sasaki, Senow  
Sasamoto, Yutaka Albert  
Sato, Toshiatsu  
Sawada, Akio  
Shibata, Ray  
Shibata, Toru  
Shimada, David  
Suhama, Yone  
Sumihoro, George  
Sumoga, Buster  
Takahashi, Thomas  
Takahashi, Tommy  
Takasugi, Bob Mitsuhiro  
Tanabe, Yoshinobu James  
Tanaka, Dick  
Taniguchi, Harry  
Taniguchi, Tomio  
Tanihana, James Tsugio  
Tenma, Shoki  
Thayler, Leslie  
Tomita, Akira  
Tomita, Joe  
Toriumi, John  
Ueda, Yukio  
Uratsu, Tommy  
Uyeda, Ben  
Uyeda, Yukio  
Uyemura, Jimmie  
Wakabayashi, Hideo  
George  
Wasano, Fujio Carl  
Washino, Kazuo  
Yabuki, George  
Yabuki, Joe  
Yagi, Edward  
Yamada, Teddy  
Yamada, William  
Yamaguchi, Yasumori  
James  
Yamamoto, Susumu  
Yamamoto, Tommy  
Yamasaki, June  
Yasuda, Toshimori  
Yonemura, Roy  
Yoshida, Setuo  
Yoshimura, George  
Yoshizuka, William  
Yoshizuka, Yoshio  
Kenneth

Go, Mitsuo  
10th Grade

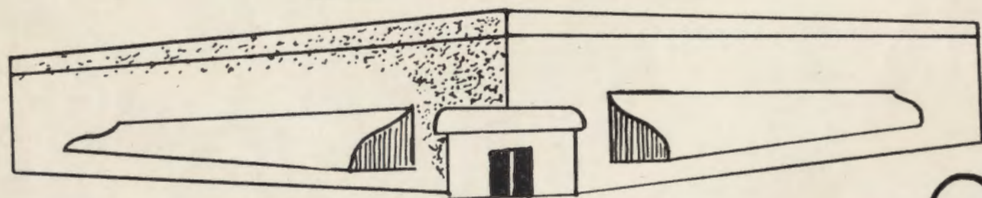
Oshita, Eiji  
11th Grade

Abey, Doris  
9th Grade

IT'S

CO-OP

THE



PEOPLE'S



BUSINESS

TULELALE COOPERATIVE ENTERPRISES, INC.  
TULELAKE WAR RELOCATION AUTHORITY  
NEWELL, CALIFORNIA