

AQUILA

1943



Property of Air Yokota
1914-C
Russell, California
Sept. 14, 1943

Ex-Libris



PEP RALLY



AQUILA

Editor-in-Chief MOLLIE YASUTAKE
Assistant Editor ANDREW SUGIYAMA
Assistant Editor MARVIN URATSU
Business Manager MIYUKI INOUE
Adviser DOROTHY PEARSON

PUBLISHED BY
THE ASSOCIATED STUDENT BODY
OF
TRI-STATE HIGH SCHOOL
NEWELL, CALIFORNIA
1943



*Symbol of strength and courage
 Aquila mightiest bird,
 Our guide through storm and chaos
 We'll make our voices heard.*

*Gladly do we follow
 Where you lead the way
 Nor mind the speed or distance
 As we conquer day by day.*

ROSE JEAN RICHTER



KENNETH HYOZAKA 45.

ADMINISTRATION



Dedication

To

KENNETH HARKNESS

*superintendent of the project schools,
in appreciation for all he has done
that we might have the light of knowledge
to guide us into the dark
future without fear,
we dedicate this,
the first edition of the
Aquila*

In Memoriam

CALVIN NITTA



MARTIN P. GUNDERSON
Principal

Principal's Message

"THE AQUILA" may well be called the monument to the cooperative effort of the students and faculty of the Tri-State High School, and also, the first milestone in the history of the school. I wish to congratulate and thank all the people who were responsible for making "THE AQUILA" such an outstanding success.

In behalf of the students and faculty, let me bid farewell to the Senior class of '43, with our sincere wishes for a happy and successful future. May the records made by you at Tri-State High School continue.

Sincerely,

MARTIN P. GUNDERSON,
Principal of the High School



GUY W. COOK
Assistant Principal



MRS. IRENE JADERQUIST
Curriculum Advisor



ARTHUR G. RAMEY
Supervisor of Colonist Teachers



Barbul, Mary English, Social Studies	Billigmeier, Hanny English, Social Studies	Billings, Portia Junior High Core	Breece, Ruth English	Breece, Thomas English, Social Studies, Latin	Burns, Nona Home Economics	Burton, Bessie English, Social Studies
Carter, Nellie Junior High Core	Cheek, Raymond Music	Clark, Zell Music	Cook, Marguerite Junior High Core	Daley, Claudine Science	Desper, Emily English, History	Dickinson, Maud Junior High Core
Driscoll, Carrie Home Economics	Erickson, Agnes Biology	Esser, Norman Science, Math	Greenwood, Florence Commercial	Gunderson, Margaret English, History	Hartt, Charlotte Home Economics	Hartwig, Edetha Problems, Social Science
Hayashi, Helen Problems	Inouye, Tomiko Social Studies	Janes, Elizabeth Junior High Core	Jinguji, Yoshiye Commercial	Johnson, Donald English	Kagiyama, Kiyo Commercial	Katayama, Yuki Problems
					Kirven, Bess English, History	Kishaba, Tom Science

Faculty



Kuroiwa, Chiye Art	LaRoque, Fred Supervisor of Physical Education and Health	Lum, Maryette Music	Lytle, Grover Shop	Manji, Masako Commercial	Momoi, James Junior High Core	Miyamura, Kazuto Science
Mizutani, Saburo Commercial	Mochizuki, Michi Junior High Core	Mori, Perry Mathematics	Nicholson, Goldie Junior High Core	Norman, Cleone Art	Palmerlee, Charles Mathematics	Pearson, Dorothy Mathematics
Phillips, Dorothy Art	Richter, Rose Junior High Core	Ritter, Edgar English, Social Studies	Roudabush, Lillie Junior High Core	Roeder, Isabel Social Studies	Sakiyama, Tom English	Schaaf, Alta Social Studies
Smoyer, Jeannette Journalism, Problems, Speech Arts	Starmer, Garrett Sr. Problems, Speech	Swetek, Alice Girls' Physical Education	Swetek, Stephen General Science, World History	VanBuskirk, Garnet Junior High Core	Velasquez, Elisa Language	Yarrow, Harriet Mathematics, Social Studies
Yasui, Tatsumi Language	Zink, Jane Librarian					

Faculty Members Not Pictured

- | | | |
|------------------|------------------|--------------------|
| Darcy, Lyman | Kanow, Taro | Silverthorne, Eada |
| Frost, Charles | Koski, Katherine | Soderman, Marian |
| Frost, Margaret | McKay, Jean | Wallis, Ethel |
| Fujimoto, Henry | Ota, Rei | Warren, Myrtle |
| Greenwood, Glenn | Shepard, Alta | Wells, Florence |
| Jenson, Clara | | Young, Sarah |



ASSISTANT TEACHERS
 Front row: Ramey A., Wada I., Sakuma S., Nakawatase M., Miyaki A., Ichikawa R., Takatsuka M., Nishida F. Second row: Ryugo K., Takahashi Y., Mochizuki K., Morinaga H., Kuge K., Inouye T., Imai A., Kubo G.



SHOP TEACHERS
 Kaneko S., Yamamoto J., Imai A., Shikasho R.



PHYSICAL EDUCATION TEACHERS
 Front row: Nagaishi K., Swetek A., Asakawa M., Abe R., Taketa G. Second row: Yoshikawa E., Matsumoto M., Tamu a W., LaRoque F. Third row: Ichikawa S., Kajikami J., Hanada H., Sakita G., Mayeda M.



KEN KASHIWABA

CLASSES



SENIOR CLASS OFFICERS
Arima G., Hasegawa E., Sugiyama A., Koshiba S., Hijikata R.

Senior Class

One school year has passed since the 400 Seniors who composed the graduating class of 1943 answered the call of the imaginary school bells which rang out from the newly organized high school at Newell, California, on September 14, 1942.

Unlike other Senior classes, this class had no specific or established traditions. Because of lack of precedent the members had to assume many responsibilities which normally they would not.

Under the efficient leadership of Tom Haji, president; George Arima, boys' vice president; Ruth Hijikata, girls' vice president; Sumiko Washino, secretary, and Sam Koshiba, treasurer, the Senior class accomplished a great deal. However, because both the president and the secretary graduated in April, Andrew Sugiyama and Ellen Hasegawa were elected president and secretary, respectively, to fill the vacancies.

As the school year drew to a close, many of the normal high school senior traditions were observed. The Senior Ball, under the chairmanship of Hisako Nara-hara and with the support of the Juniors, was a huge success. The Senior Day consisted of a whole school day off for the Seniors to do as they pleased. The class activities drew to a close with the graduation ceremony which saw the Seniors receiving their diplomas in caps and gowns.

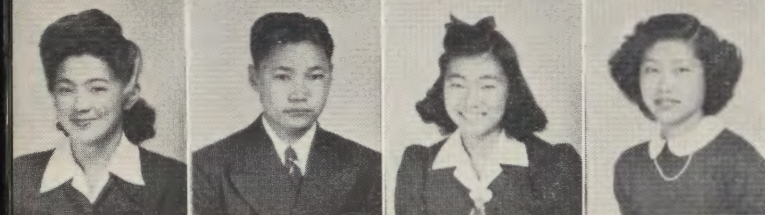
The Senior advisors were Miss Edetha Hartwig, Mr. Garrett Starmer, and Mr. Charles Palmerlee.



Abe, Joe
 Abe, Masako
 Abe, May
 Abe, Miyoko



Aochi, Shiro
 Aranaki, Eva
 Aredas, Dorothy
 Arima, George



Asakawa, Mazie
 Asazawa, Haruo
 Asoo, Lillian
 Doi, Masako



Doi, Setsuko
 Endo, Rayko
 Enomoto, Jerry
 Fujii, Chizue



Fujimoto, Tom
 Fukuhara, Katsuye
 Fukuhara, Sarah
 Fukumori, Taro



Furukawa, Mary
 Goishi, Lillian
 Goto, George
 Hada, Yoshimitsu



Hamada, Chimiko
 Hamaguchi, Kinuko
 Hamamoto, Toshiko
 Hamatani, Nobuko

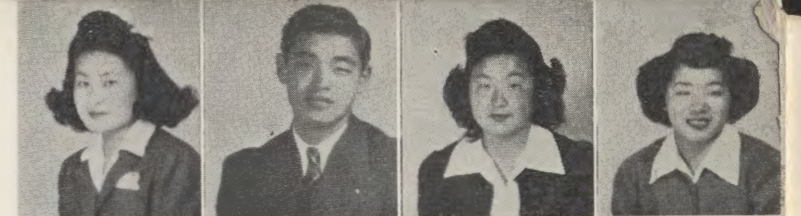


Hara, Yukio
 Hasegawa, Betty
 Hasegawa, Dorothy
 Hasegawa, Ellen



Hasegawa, Saburo
 Hasegawa, Toshiko
 Hashimoto, Sumi
 Hatamiya, John

Hatano, Gerry
 Hayashida, Bob
 Hijikata, Ruth
 Hikiji, Muroko



Hirabayashi, Ruth
 Hiraga, George
 Hirai, Virginia
 Hirata, Mary



Hirotsu, Takashi
 Hishinama, Shigeo
 Hiuga, Kimie
 Honda, Dixie



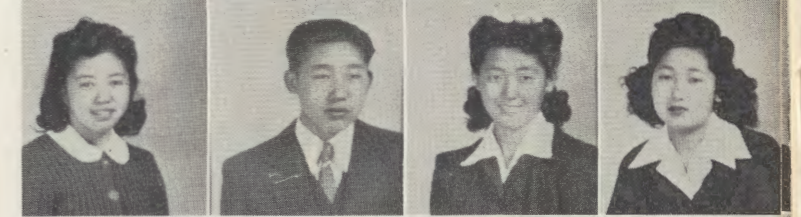
Honda, Norman
 Honda, Toshiko
 Hori, Jack
 Horio, Frank



Horio, Helen
 Hyosaka, Kenny
 Ichikawa, Harue
 Ichikawa, Stanley



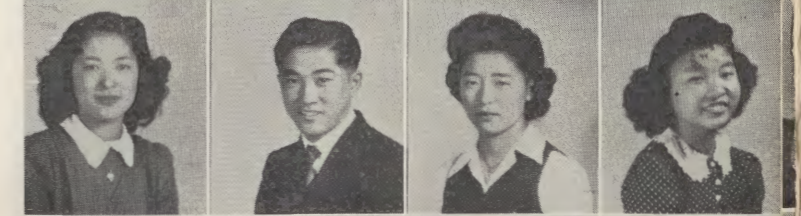
Idehara, Masuye
 Iida, Noki
 Ikeda, Amy
 Ikeda, Frances



Imagawa, Martha
 Inouye, Miyoko
 Inouye, Miyuki
 Ishida, Cheeko



Ishida, Chizuko
 Ishida, Jack
 Ishida, Matsuye
 Ishigaki, Alyce



Ishihara, Sakaye
 Ishihara, Teiko
 Ishikawa, Fumiko
 Ishikawa, Kimiye





Itano, Edith
 Ito, Dorothy
 Ito, Mary
 Ito, Tayeko



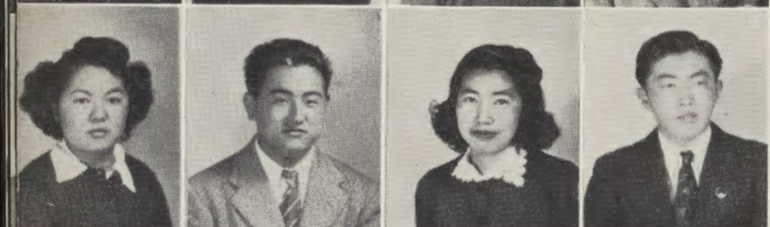
Ito, Yasushi
 Iwamoto, Barbara
 Iwamoto, Emmie
 Iwamoto, George



Iwata, Florence
 Izumi, Kaz
 Kadoyama, Margaret
 Kageta, Sadame



Kageyama, Atsushi
 Kaihara, Betty
 Kajita, Miriam
 Kakudo, Masayuki



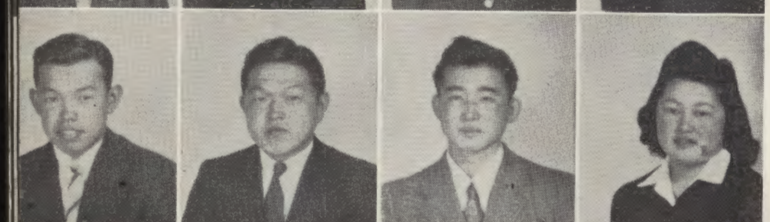
Kaminaka, Ruby
 Kamiya, Satoshi
 Kanai, Kiyoa
 Kanda, John



Kaneko, John
 Kano, Hisako
 Kashiwabara, Hiroko
 Katagiri, David



Katagiri, George
 Kato, Hanae
 Kato, Marie
 Kawahara, Mary



Kawamoto, Ruy
 Kawamoto, Shige
 Kawano, Jerry
 Kawano, Natsuko



Kawano, Toshiko
 Kikugawa, Kay
 Kimura, Sally
 Kimura, Tom

Kimura, Yoshikiyo
 Kinoshita, Kiyoshi
 Kinoshita, Mary
 Kinoshita, Nellie



Kinoshita, Rosie
 Kishimura, Kishiko
 Kitagawa, Mae
 Kitahara, Jane



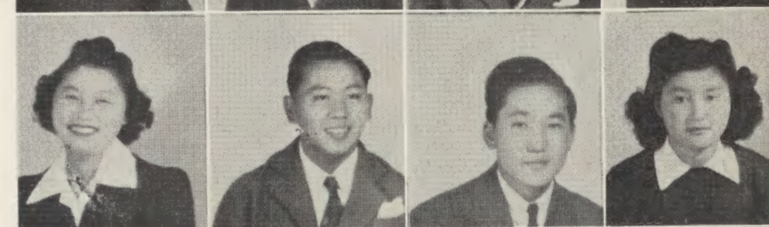
Kitahara, Mick
 Kitajo, Jean
 Kiyono, Masami
 Kiyono, Kazue



Kodama, Molly
 Kodama, Nobie
 Kodama, Robert
 Komiyama, Yuriko



Kono, Molly
 Kosai, Yoshio
 Koshiha, Samuel
 Kubo, Mary



Kubo, Yukiye
 Kumagai, Miyo
 Kunisaki, Mary
 Kurahara, Conrad



Kuramoto, Yoso
 Kurosaki, Fumiko
 Kurotori, Tom
 Kyono, Masatoki



Machida, Roy
 Maeda, Rui
 Maeda, Teruo
 Makishima, Sadako



Mano, Kiyoko
 Maruyama, Sachiko
 Masaki, Mieko
 Masuoka, Noboru





Masuoka, Takashi
 Matsubara, Toshiko
 Matsuda, Mary
 Matsuda, Tom



Matsui, Ben
 Matsui, George
 Matsumoto, Bob
 Matsumoto, Kay



Matsumoto, Marie
 Matsune, Marie
 Matsuo, Helen
 Matsuoka, Mervin



Mayahara, Tomoko
 Mikami, Takumi
 Miyagishima, Mary
 Miyahara, Dorothy



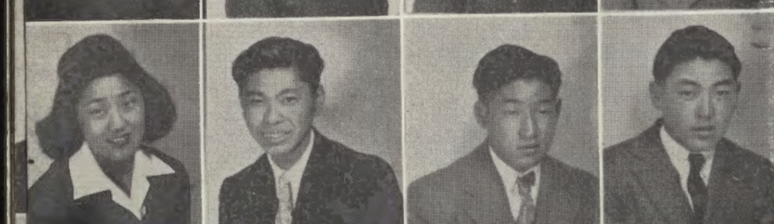
Miyamura, Tommy
 Miyao, Helene
 Miyao, Irene
 Miyoshi, Bob



Mochizuki, Minoru
 Mogi, Yukiye
 Monji, Takeshi
 Mori, Ayako



Mori, George
 Morinaga, Marian
 Morinaga, Momoko
 Morioka, Hideo

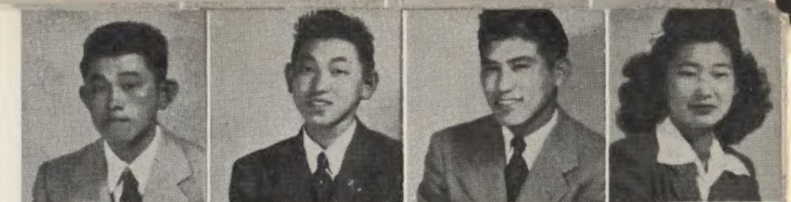


Morioka, Mary
 Morisato, George
 Morishige, Shun
 Motoyama, Masaru



Motoyama, Shizuo
 Munekawa, Fumiko
 Munekawa, Satoru
 Murakami, Masaru

Murata, Tetsuo
 Nagaishi, Hideo
 Nakao, Kiyoshi
 Nakae, Chiyo



Nakai, Masako
 Nakagawa, Betty
 Nakagawa, Kazu
 Nakagawa, Kiyoko



Nakamoto, Kazuko
 Nakamura, Aiko
 Nakamura, Anna
 Nakamura, Irene



Nakamura, Kazuko
 Nakamura, Miyoko
 Nakamura, Sakaye
 Nakanishi, Bob



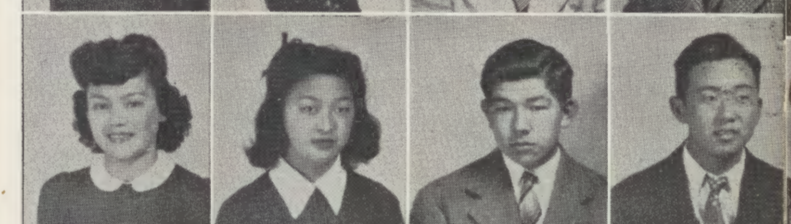
Nakanishi, Hiroshi
 Nakanishi, Shigeo
 Nakanishi, Ted
 Nakano, Evangeline



Nakaoki, Jiro
 Nakatogawa, Toyoko
 Nakawatase, Fred
 Nakayama, Richard



Namba, Toshiko
 Narahara, Hisako
 Narita, John
 Natsuhara, Frank



Nakazato, Aiko
 Nekoda, Katherine
 Niiyama, May
 Nishida, Shichio



Nishihara, Sumiko
 Nishimura, Yoshiko
 Nishikawa, Ruth
 Nishimi, Kiyoshi





Nishimoto, Dorothy
Nishimura, Mitsuye
Nitta, Emily
Nobuyama, Eiko



Noguchi, Mitsuki
Noji, Toru
Norimatsu, Margaret
Oda, Joe



Oda, Robert
Ogawa, George
Ohama, Aiko
Ohmura, Paul



Okai, Ruth
Okamida, George
Okamura, Kimiko
Okamoto, Maureen



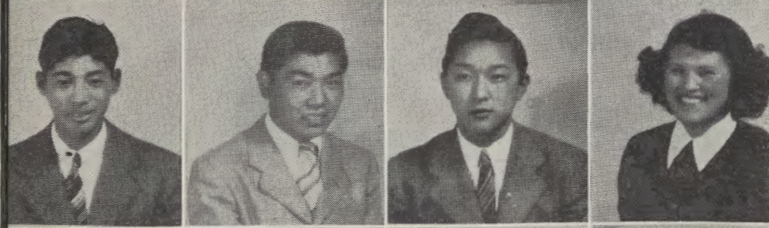
Oki, Aileen
Oki, Midori
Okubo, Michiko
Okubo, Tom



Omoto, Mitsuo
Ono, Harue
Ono, Lois
Ono, Nancy



Osaki, Ayako
Osaki, Yoshito
Oshika, James
Oshiro, Harry



Ota, Hitoshi
Ota, Richard
Ota, Roy
Oto, Tomi

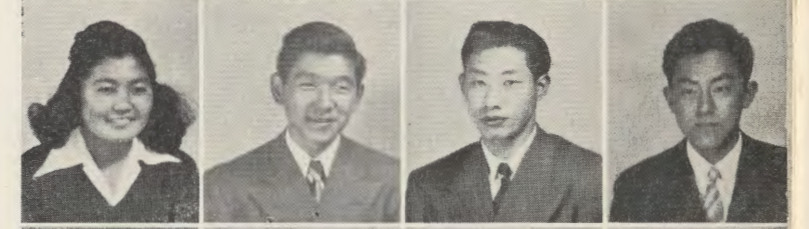


Otsuji, Ben
Otsuji, Mary
Oya, Merry
Ozawa, Esther

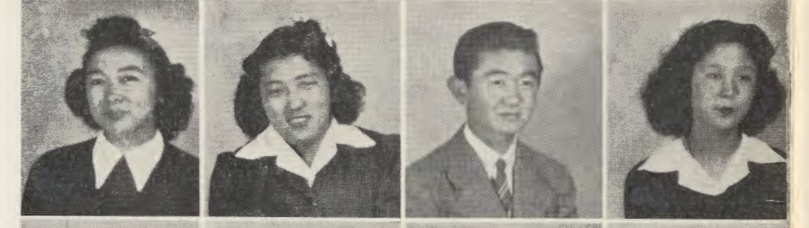
Ozawa, William
Saito, Dahlia
Sakaguchi, Grace
Sakai, Grace



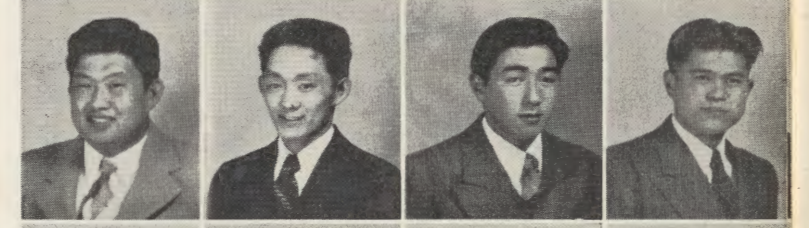
Sakamoto, Akiye
Sakauye, Isamu
Sakayeda, George
Sakita, George



Sakuma, Amy
Sanjo, Marjorie
Sasaki, Jack
Sasaki, Sumiko



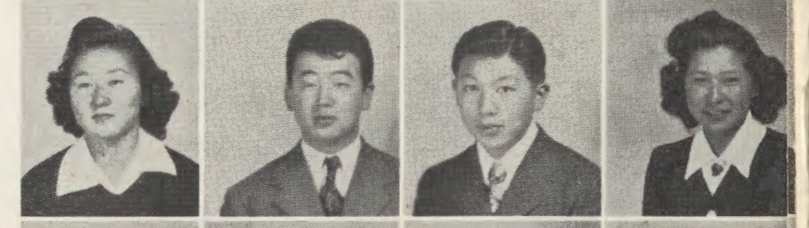
Sasaki, Takashi
Sasaki, Tatsuo
Sasaki, Tomotsu
Sasaki, Yukio



Sato, Arthur
Sato, Masahiro
Sekiguchi, Nao
Seto, Louis



Shibasaki, Toshiko
Shibata, Kay
Shigaya, Kin
Shigeno, Florence



Shimada, Fumi
Shimada, Matsuko
Shimoyama, Arusa
Shinkawa, Tayeko



Shintaku, Asao
Shirasago, Masao
Sofye, Yoshiko
Sonoda, Mary



Sorakubo, Hiroshi
Sugimura, Bennie
Sugiyama, Andrew
Sumida, Shizuye





Sumida, Willie
Suyama, Sakiko
Suwabe, Takeji
Suzuki, Francis



Suzuki, Tom
Takahashi, Michiko
Takahira, Alice
Takao, Mona



Takao, George
Takasaki, Tsugiko
Takayama, Betty
Takemori, Seiro



Takeshita, Chiyo
Taketa, Charles
Tamura, Connie
Tamura, Marianne



Tanabe, Jane
Tanaka, Bob
Tanaka, Eiko
Tanaka, Kazuo



Tanaka, Yoshiko
Tani, Yoshio
Tanigawa, Gracie
Tanizaki, Masao



Tateyama, Shigeru
Terada, May
Toda, Marie
Toda, Mary

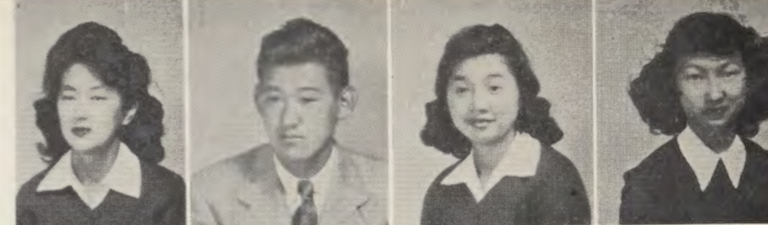


Togami, Yeiko
Toki, Yuriko
Tomita, Aiko
Tomosada, Samuel



Tonomura, Teruko
Toyoshima, Mary
Tsuchida, Noboru
Tsujimoto, Emi

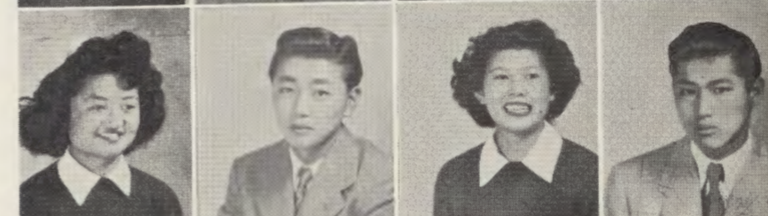
Tsukamoto, Haruko
Tsukiji, Ted
Tsurui, Fumi
Ueda, Shizuko



Uno, Ikuko
Uwate, Matao
Uyeda, Etsuko
Uyeno, Mary



Uyetake, June
Wakinaka, Asa
Washino, Sumiko
Watanabe, Eay



Yagi, George
Yamada, Mary
Yamada, Isamu
Yamaguchi, Atsumi



Yamaguchi, Miyoko
Yamahata, Eisei
Yamamoto, Aiko
Yamamoto, Harold



Yamasaki, Mamoru
Yamasaki, Thomas
Yano, Carl
Yasuda, Jerry



Yasutake, Mollie
Yokoo, Bessie
Yokoo, Grace
Yokota, Hiroshi



Yoshikai, Tom
Yoshikawa, Anna
Yoshikawa, Edward
Yoshimi, Richard T.



Yoshino, Hikaru
Yoshino, Nina
Yoshizaki, Glory
Yoshizumi, Alyce





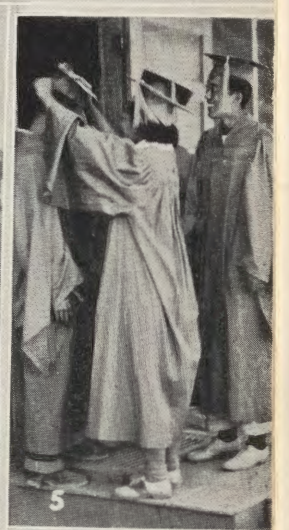
Yumibe, Teruko
Kitagawa, Mei

Camera-Shy Seniors

Haji, Tom
Hashimoto, Hideo
Hoshi, Sherman
Inouye, George
Irokawa, Isamu
Kadowaki, Charles
Kakiji, Harumi
Kawamoto, Riyichi
Keiunji, Masaru
Koike, Hideo
Kono, Sam

Kurimoto, George
Menda, Masao
Mizusaki, Sam
Nishimoto, Nancy
Oda, Tommy
Okada, Naoto
Okusu, Ben
Oshita, Albert
Sano, Kiyoshi
Sato, Victor
Sori, Masaru

Sumada, Tsuguo
Tanaka, Masahiro
Tenma, Lily
Toyota, Yutaka
Ueda, Masako
Uyeda, Tom
Washizu, Masaki
Yamada, Tom
Yamanaka, Joe
Yamashita, Masaru
Yasuda, Yuriko



THE SENIOR SCRAWL

- 1—Shoe Sale
- 2—High and Mighty
- 3—Baccalaureate Procession
- 4—Firebreak Finale
- 5—Tops 'em all
- 6—"Kids' Day"
- 7—Ain't they cute?
- 8—Evacuation
- 9—Is ANYBODY happy?

Junior Class



Junior Class





JUNIOR CLASS OFFICERS
Kurahara L., Oto M., Sasaki T., Manji G., Iwasaki J.

Junior Class

The class of '44, under the guidance of Miss Isabel Roeder, Miss Carrie Driscoll, and Mr. Raymond Cheek, elected the following officers: Thomas Sasaki, who succeeded Jack Tashiro, as president; LaVern Kurahara, boys' vice president; Jean Iwasaki, girls' vice president; Mitsy Oto, secretary, and Grace Manji, treasurer.

Eager to participate in various activities, the Junior class sold delicious doughnuts at the "Kanaka Carnival."

The highlight of the Juniors' social life, the Junior-Senior Prom, was held June 25. Over a hundred couples enjoyed the Prom, the theme of which was "Silhouette of the Night." The music was provided by the "Down Beats."



SOPHOMORE CLASS OFFICERS
Hijkata L., Namba L., Mizoue J., Hayashi B.

Sophomore Class

With the help of the class advisors, Miss Mary Barbul and Mr. Stephen Swetek, the Sophomores boast of a successful year. During the year the following officers were elected: Johnny Mizoue, president; Ken Nakatogawa, boys' vice president; Betty Hayashi, girls' vice president; Lilly Namba, secretary, and Lilly Hijkata, treasurer.

Displaying fine school spirit and not lacking in executive ability, the Sophomore class was well represented in all campus activities. The boys won the consolation prize in the interclass basketball tournament. The highlight of the class sponsored chain of events was the Freshman-Sophomore Day, June 16, which was climaxed with the Freshman-Sophomore Swing.

Sophomore Class



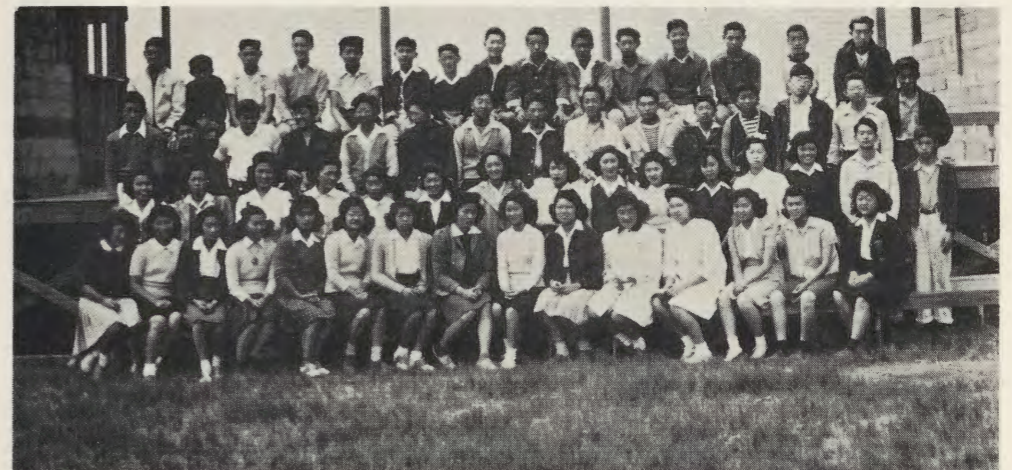
Sophomore Class



Freshman Class



Freshman Class





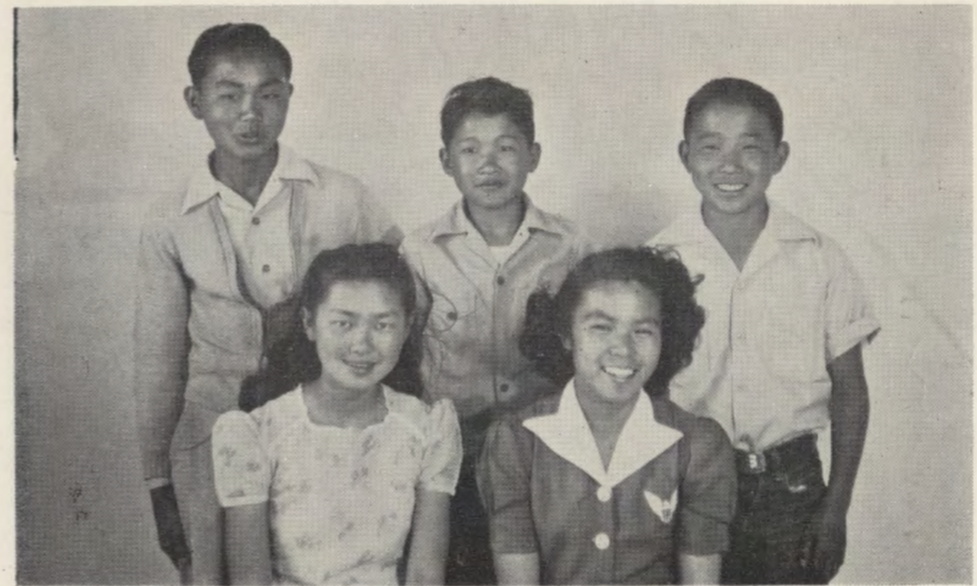
FRESHMAN CLASS OFFICERS
 Front row: Sakamoto W., Fukami M., Ohashi M.
 Second row: Sato M., Mr. Johnson, Sumada M.

Freshman Class

Efficiently led by President Mits Sumada; Boys' Vice President Willie Sakamoto; Girls' Vice President Mitsuko Sato; Treasurer Martha Ohashi, and Secretary Martha Fukami, the Ninth Graders have blazed the trail for the coming freshman classes of Tri-State High.

The Frosh contributed to the "Kanaka Carnival," April 30, by selling pop, ice cream, ribbons, potato salad, and French pies. They collaborated with the Sophomores in putting over the Freshman-Sophomore Day and Freshman-Sophomore Swing.

The advisors were Mr. Donald Johnson and Mrs. Emily Desper.



EIGHTH GRADE CLASS OFFICERS
 First row: Sato J., Nakamura M.
 Second row: Munekawa R., Mukai J., Tsuchida S.

Eighth Grade

One of the younger classes of our Tri-State High, the Eighth Graders under the guidance of Miss Florence Wells have successfully completed their last year in Junior High.

The Eighth Grade officers were: Shoji Kubo, president; Jackie Mukai, vice president; Mary Nakamura, secretary; Roy Munekawa, treasurer. After two quarters, vacancies in the offices of president and secretary were filled by Sam Tsuchida and June Sato, respectively.

The whole class heartily took part in helping the Junior Red Cross by collecting old jig-saw puzzles, making scrapbooks, quilts, and wood carvings, and knitting sweaters.