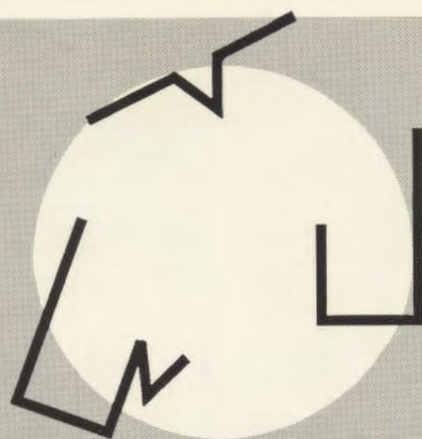


S E P T E M B E R 2 7 - 2 9 , 1 9 9 1

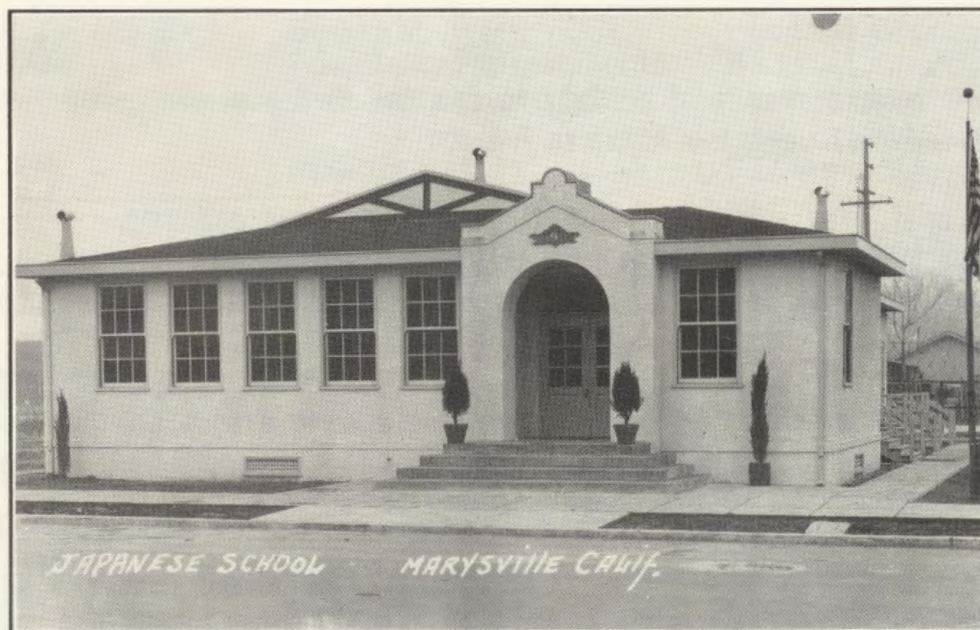


**MARYSVILLE
REUNION
1 9 9 1**

YUBA-SUTTER
COLUSA, BUTTE
COUNTIES

M A R Y S V I L L E , C A L I F O R N I A

WELCOME BACK TO OUR THIRD REUNION



MARYSVILLE GAKUEN
Japanese Language School

BUILT IN 1926

This was the first permanent Japanese school building built in Marysville, to accommodate several hundred Nisei children who attended after their regular school classes. There were many out-of-town students who came for instructions on Saturdays.

WELCOME

We welcome you most cordially to this, the third post-evacuation Marysville area Japanese American Reunion.

A brief three years have lapsed since the previous gathering, but the interest and response from you, the attendees, was outstanding. We are happy to be able to host this event and hope it will be the best one ever.

With the advent of World War II and the ensuing evacuation, this area's Japanese American community was fractured and the people were scattered to the four corners of this country as well as parts of the world.

It is a pleasure to welcome all of you back, our former neighbors and friends. Enjoy the camaraderie of once again meeting old friends and relatives, reminiscing of your childhood, school days, the relocation centers and family life.

Thank you for joining us.

Frank Nakamura
May Nakao
Yoshiko Tanabe

Co-Chairmen

SCHEDULE OF ACTIVITIES

FRIDAY

| | | |
|--------------------|--------------------------|------------------------------------|
| 10:00 AM (All Day) | Registration | Buddhist Church Annex |
| 11:00 AM | Hospitality/Refreshments | Buddhist Church Annex |
| 12:30 PM | Golf Tournament | Plumas Lake Golf & Country Club |
| 6:00 PM | Mixer/Buffer | B.C. Annex |

SATURDAY

| | | |
|---------------------|----------------------|----------------------------------|
| 7:00 AM | Fishing | As Pre-arranged |
| 10:00 AM to 3:00 PM | Registration | B.C. Annex |
| 11:00 AM | Lunch | B.C. Annex |
| 1:00 PM | Group Picture | B.C. Annex |
| 1:15 PM | Tours | Colusa |
| 5:00 PM | Banquet Registration | Bonanza Inn Convention Center |
| 5:00 PM | Happy Hour | Bonanza Inn Convention Center |
| 6:30 PM | Dinner | Bonanza Inn Convention Center |

SUNDAY

| | | |
|--------------------|-----------|----------------|
| 8:00 AM to 9:30 AM | Breakfast | B.C. Annex |
| 10:30 AM | Reno Trip | LV. B.C. Annex |



Japanese Gakuen -- Circa 1915



Pupils and Parents of Marysville Gakuen -- Circa 1918



Turning of Sod in 1926 for Construction of Marysville Japanese School Building at 115 B Street



Marysville Gakuen Students -- Circa 1927



Marysville Gakuen Students -- Circa 1930

REUNION COMMITTEE

| | |
|--|---|
| Co-Chairpersons | <i>Frank Nakamura May Nakao Yoshiko Tanabe</i> |
| Secretary/Corresponding Secretary Registration List | <i>Mazie Sasaki Hatsuye Nakamura</i> |
| Treasurer | <i>Frank Nakamura</i> |
| Housing | <i>Frank Okimoto</i> |
| Publicity | <i>George Kashiwa Hatamiya</i> |
| General Arrangements | <i>Ichiro Yoshimura Bill Tsuji</i> |
| Registration | <i>Jeanne Tokunaga Candace Chinn Darlene Inouye</i> |
| Name Tags | <i>Mazie Sasaki</i> |
| Booklet | <i>Roy & Momo Hatamiya</i> |
| Historian | <i>Miyoko Nakahara</i> |
| Photo Displays | <i>Ichiro & Toshi Yoshimura</i> |
| Clean-up | <i>Ken Tanabe Jim Tanimoto Ray Kamikawa</i> |
| Hosts & Hostesses | <i>Sam Kurihara George Nakao Ichiro Yoshimura Sally Nakatsu</i> |
| Hospitality | <i>Chiyo Nakagawa</i> |
| Luncheon (Saturday) | <i>Molly Kamikawa</i> |
| Friday Night Mixer | <i>Amy Iwanaga Riye Okamoto</i> |
| Bar | <i>George Ishimoto Min Hamatani</i> |
| Saturday Night Banquet | <i>Frank Nakamura</i> |
| Master of Ceremony | <i>Terry Manji</i> |
| Sunday Brunch | <i>Nobi Tokunaga</i> |
| Music | <i>George & Fumi Yoshimoto</i> |
| Telephone | <i>Nancy Komatsubara</i> |
| Photographer | <i>George Inouye</i> |
| Fishing | <i>Mark Iwanaga Mike Tomita</i> |
| Golfing | <i>Jim Fukui</i> |