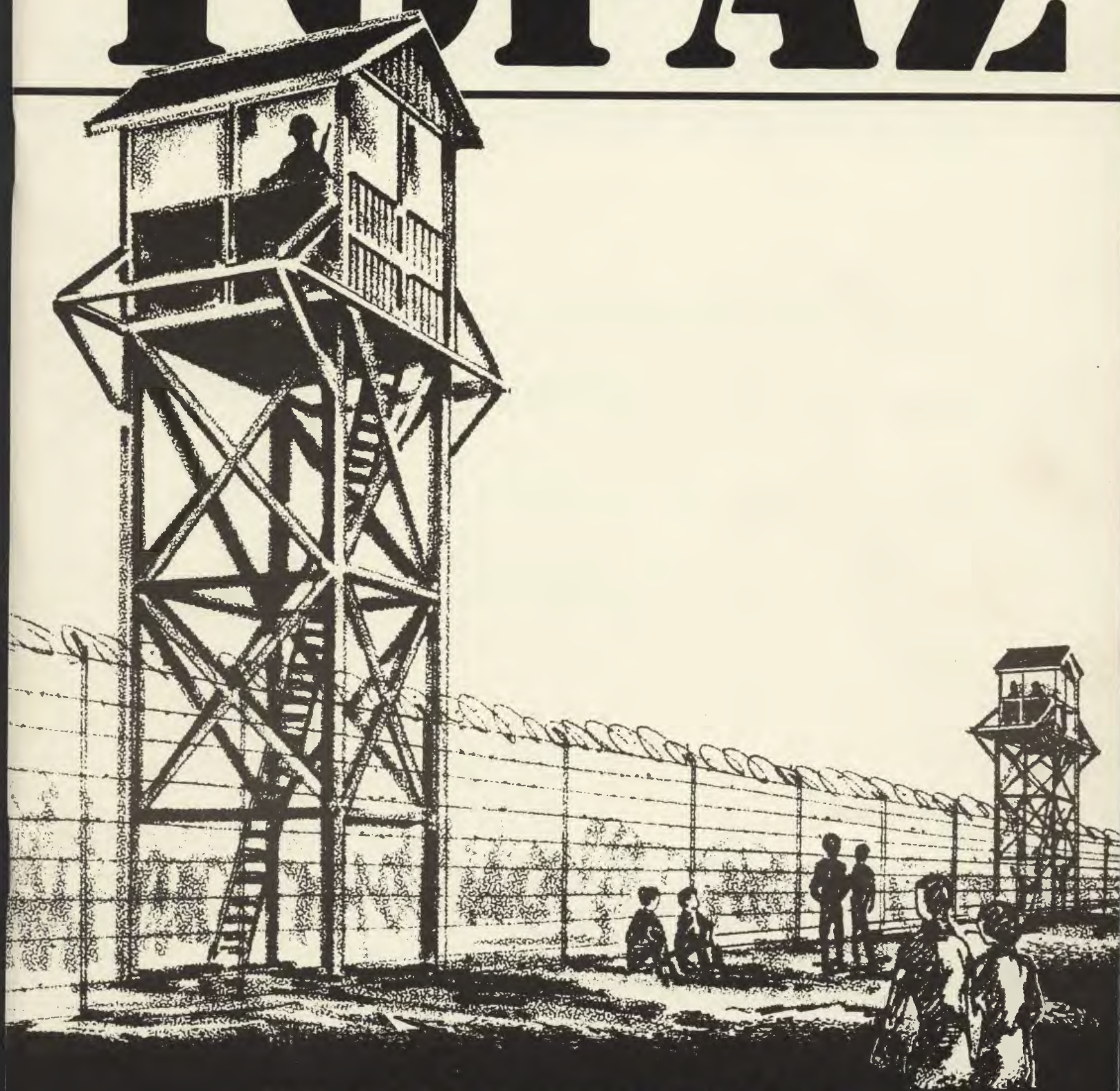


TOPAZ



40th YEAR TOPAZ REUNION

SPONSORED BY CLASSES OF '43 & '44

SEPTEMBER 24 & 25, 1983

SAN FRANCISCO, CALIFORNIA



**Congratulations to
our many TOPAZ friends
and best wishes on our
40th Anniversary.**



1698 Post Street, San Francisco, Ca.
(415) 931-5510 / 5511
565 No. Sixth Street, San Jose, Ca.
(408) 294-3190



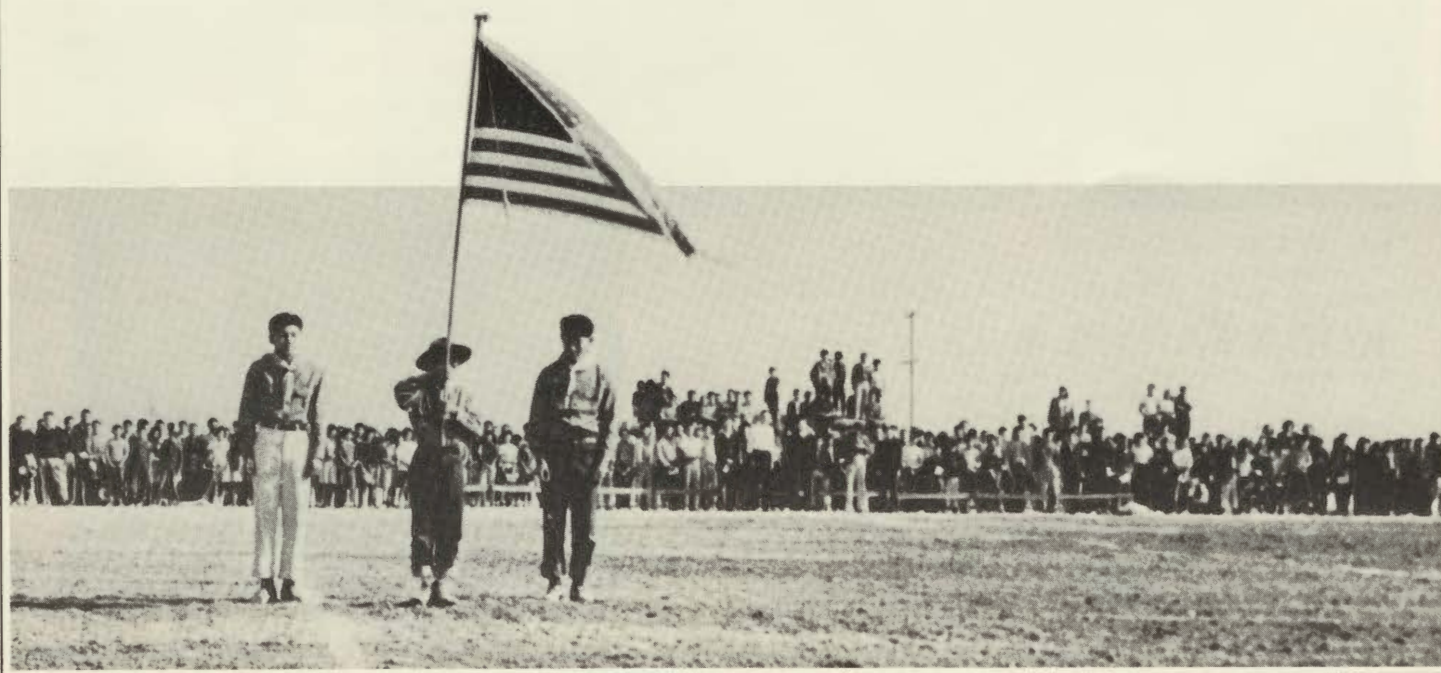
**SOKO
HARDWARE
COMPANY**



Contents

	Page
Proclamation	5
Welcome from the Reunion Committee	6-7
Greetings	9-12
Tree of Topaz	13
Program	14-15
Who Are They?	17
Update	20-23
Tanforan	25
City of Topaz	28-29
Topaz and Surrounding Areas	30
The Topaz Block	31
Topaz, Utah	35-39
A Look at Topaz by Delta, Utah Students	42-43
Topaz Monument	44
Last Will and Testament	47
Directory - Classes of '43 & '44	48-52
Acknowledgments	54

This booklet was made possible through the efforts of the reunion committee who contributed suggestions, time and work. A special thanks to all the advertisers.





KOKUHO ROSE RICE, TSURU MAI,
MOCHIKO & SWEET RICE

PRODUCED BY:

KODA FARMS, INC.

P.O. BOX 88, SOUTH DOS PALOS, CA 93665

DISTRIBUTED BY:

株式会社 野村商会

NOMURA & COMPANY, INC.

P.O. BOX 34131, SAN FRANCISCO, CA 94134

151 INDUSTRIAL WAY, BRISBANE, CA 94005 PHONE 468-1032, 468-1033



Proclamation

WHEREAS: The CLASS of 1943 and 1944 of TOPAZ HIGH SCHOOL was established 40 years ago during a difficult time of war hysteria, and at a time when teachers, books, supplies and other essentials to learning were hard to come by; and

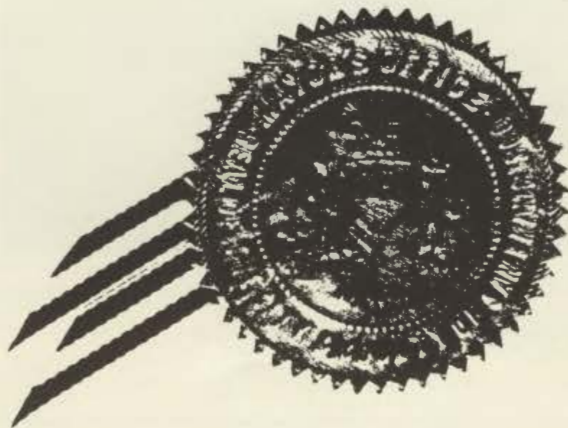
WHEREAS: Even with these problems, the TOPAZ CLASS of 1943 and 1944 graduated one hundred percent of its students; and

WHEREAS: The men and women of this class also served honorably and with great distinction in the armed services of the United States, including such highly decorated units as the 442nd "GO FOR BROKE" and the 100th Battalion, where they became the "secret weapon" in the Pacific Theater and served as intelligence agents, interpreters and translators; and

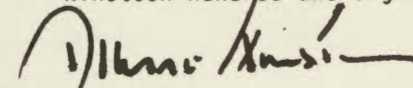
WHEREAS: Members of the TOPAZ CLASS of 1943 and 1944 were relocated from San Francisco during World War II, but they have returned to our City and have contributed invaluable to our progress and prosperity; and

WHEREAS: The TOPAZ CLASS of 1943 and 1944 is holding a 40th Anniversary Reunion here in our City on September 24, 1983; now

THEREFORE, BE IT RESOLVED THAT I, Dianne Feinstein, Mayor of the City and County of San Francisco, do hereby heartily welcome and pay tribute to the Alumni of TOPAZ HIGH SCHOOL and do thank them for contributing so much to the City and County of San Francisco.



IN WITNESS WHEREOF, I have hereunto set my hand and caused the Seal of the City and County of San Francisco to be affixed this fourteenth day of June, nineteen hundred and eighty-three.


Dianne Feinstein
Mayor



Welcome

September 24, 1983

Dear Classmates, Faculty, and Friends:

Welcome to the Topaz High School Reunion. Your hosts are the Classes of 1943 and 1944, respectively.

In 1943 we learned a poem and we would like to open with that same poem tonight:

*A candle's but a little thing
It starts with just a piece of string
By dipping and clipping with gentle hand,
It gathers wax upon the stand
Until complete
The snowy white
It glows with a warm and mellow light.
Life is like a piece of string
Each deed we do a simple thing
Yet, day by day as on life's strand
We work with gentle heart and hand
It gathers love, makes dark days bright
And glows at last with a lovely light.*

Our days at Topaz High School were like that. It started like a candle with a limited understanding. It required a growth in understanding as the sense of our worth developed in the individual. Growing in the "Camp" environment required watchfulness every day and guarding the actions that we took. When a certain level of maturity was reached, our worth glowed with a warm and mellow light, just like the candle.

It is seldom that a person can have the satisfaction, however bitter it may be, of reading an opinion by Mr. Justice Robert H. Jackson, who in 1944 charged that the United States Supreme Court's majority validated the principle of racial discrimination in an emergency and he warned that this principle is a "loaded weapon ready for the hand of any authority that can bring forward a plausible claim of an urgent need."

It is not our intention to dwell on that difficult and troubled time. Rather, it is our intention to do two things: First, we would like you to have a wonderful reunion, sharing memories, stories, anecdotes, and recollections. Second, some reflections will be offered bearing upon some of the attitudes that we perceived as influencing the total pattern of conditions that tended to create the environment in which all of us were exposed. With the expectation that these two tasks can be accomplished, we will be so bold as to suggest some attitudes that we might adopt individually, and collectively, in an effort to avoid a recurrence of the 1942 situation.

It is only proper that we list an acknowledgment before the task is complete. Everyone of us should be eternally grateful to the staff and faculty, for their attitude and dedication throughout the internment period. No one of us can appreciate the host of pressures that were focused on the faculty. They came from differing viewpoints in America, from a host of supporters of one cause or another, from different factions at Topaz, and we hesitate even to guess the number of viewpoints expressed by the graduates. The staff and faculty held to the view that the incarceration was not the end; but rather an opportunity for rebuilding on proven foundations.

And now to pull this all together. Where do we stand? We were shaken in 1942 but we still stand strong, formidable, enduring; chastened by the experience but determined that there will be no recurrence.

Our final acknowledgment is to the many friends and countless strangers who have articulated a desire to wish us well in our 40th Reunion — to all these and many more, we are deeply indebted.

The Reunion Committee



The Reunion Committee

Co-chairmen:

Mas Kawaguchi and Ki Tanamachi

Mas Ashizawa
Chiyo Matsuzaki Endo
Chiyo Sonoda Futagaki
Dr. John Hada
Fumi Manabe Hayashi
Henry Hidekawa
Sumi Honnami
Yone Kato Ito
Sadame Hara Kojimoto
Ed Kubokawa
Lilliam Kajiware Matsuda

Frances Kimura Morioka
Hank Obayashi
Tets Ochi
Machiko Nakamura Ota
Koji Ozawa
Bill Sakai
Tomio Sakurai
Daisy Uyeda Satoda
Amy Hosoda Shimamoto
Kim Takata
Shogi Takata

Paul Takata
Frank Takeuchi
Stan Tsujisaka
Dr. Himeo Tsumori
Lumi Uchiyama Tsumori
Helen Mori Ushijima
George Yamamura
Mary Ogawa Yoshitomi
Tom Yoshitomi



Left to right: Sadame Hara Kojimoto, George Yamamura, Bill Sakai, Dr. Himeo Tsumori, Frank Takeuchi, Hank Obayashi, Henry Hidekawa, Mas Kawaguchi, Dr. John Hada, Machiko Nakamura Ota, Kiyoshi Tanamachi, Chiyo Matsuzaki Endo, Frances Kimura Morioka, Tom Yoshitomi, Stan Tsujisaka.



Roy Matsuda

Shig Futagaki

7721 Oakport Street • Oakland, California 94621 • Phone (415) 638-4457



*Greetings
and
Best Wishes*

TOPAZ HIGH REUNION



Sumitomo Bank of California
Member FDIC



Greetings



Dear Friends:

I am very pleased to learn that Topaz High School graduates of 1943 and 1944 are gathering here in our City on September 24 to celebrate their first Class Reunion.

All San Franciscans join me in expressing our heartfelt Welcome and our very Best Wishes for a successful and rewarding evening. As painful as some of our members' memories may be, you may all be assured that we never intend to forget what happened to Topaz High School, nor to ever permit such conditions to occur again.

Topaz High School graduates distinguished themselves on behalf of our nation during World War II and in the years since, and we are most grateful for your exemplary public services.

Have a great Class Reunion and thank you for your invaluable contributions to our community.

Warm personal regards,

Sincerely,

Dianne Feinstein
Mayor



Greetings



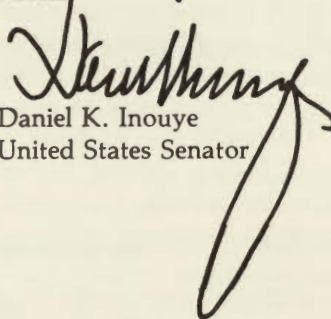
Dear Friends:

It is a pleasure and honor to extend my warmest aloha on this first reunion of the Class of 1943 and 1944 of Topaz High School. Please know that you have my heartfelt hopes for a most memorable and enjoyable celebration.

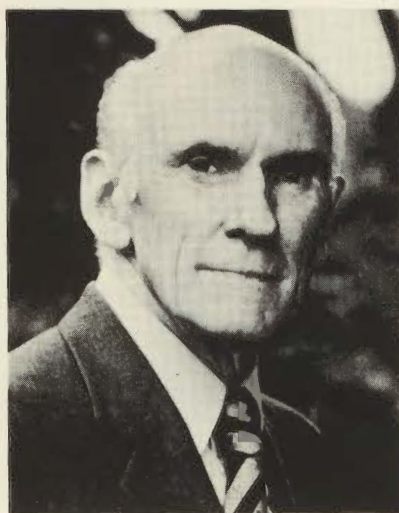
Times of difficulty are a true test of our abilities, our ideals and our courage. To succeed and flourish as leading members of our communities, as you have done, is indeed a tribute to your outstanding personal strengths.

You have provided a source of lasting inspiration to others by your ability to rise above the forces of bigotry and ignorance through determination, fortitude and faith in our nation. Your exemplary achievements demonstrate the enduring virtues of our American system, for which so many have fought and sacrificed.

Aloha



Daniel K. Inouye
United States Senator



Dear Friends,

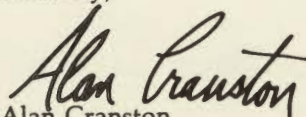
I'm pleased to send my warmest greetings to the Topaz High School classes of 1943 and 1944.

As Japanese Americans who graduated from high school in a World War II relocation camp, you experienced discrimination and endured hardship at an early age. Yet, through this unfortunate period of our history, you proved unquestionably your deep loyalty to the United States by serving courageously in both our Armed Forces and our communities.

The story of Topaz High serves as a reminder that we must ever be vigilant against any assault on our Constitutional guarantees of freedom and equality. Your continued participation in civic affairs work not only to insure this but also to create a better world for all of us.

With best regards,

Sincerely,



Alan Cranston
United States Senator



Greetings



Dear Alumni of Topaz High School:

Please accept my best wishes on the occasion of your first class reunion. As an "alumnus" of Heart Mountain, Wyoming, I am well aware of the achievements of the 1943 and 1944 classes from Topaz. Your contributions to the war effort, and to progress in the nation in the nearly four decades since, give you good reason to celebrate so many years of dedicated service to America. You have my congratulations for a job well done and my best wishes for continued success in all your future endeavors.

Again, please accept my warmest regards on this important occasion.

Sincerely yours,

Norman Y. Mineta
Member of Congress



Greetings and congratulations on the occasion of your 39th and 40th reunions!

The confidence and optimism which you display in your lives, and on this bittersweet occasion, show to the world your triumph over the terrible injustice which was done.

Today you send the world a message of courage and of hope. You are an inspiration to all who seek a better and more peaceful world.

I wish you happiness and success in your individual lives, and a reunion full of joy.

Warmest personal regards,

Sala Burton
Member of Congress



Greetings



It gives me great pleasure to write this letter of welcome to the Topaz High School Classes of 1943 and 1944.

Your fine citizenship, loyalty and scholastic accomplishments are legendary. The Issei, Nisei, and older Sansei have always demonstrated extraordinary perseverance, spirit and strength — from the anti-Asian laws at the turn-of-the-century to the relocation experience, these qualities have never waned. You have experienced and survived one of the most outrageous acts this country has ever committed.

As you may know, I have participated in the efforts of redress and reparations through personal testimony and legislation. You can be assured I will continue to work in the areas of educating the public and seeking justice for the wrongs committed in this state.

Again, my sincere best wishes to the alumni of the Topaz High School. History will show your graduation classes to be made up of fine citizens and exemplary members of our society.

Sincerely,

Willie Lewis Brown, Jr.
Speaker of the Assembly



It is an honor and a privilege to welcome the Topaz High School Class of 1943 and 1944 on the occasion of your reunion.

Like many of you, I enlisted in the armed forces to serve our country during World War II. Unlike you, I didn't suffer the indignity of being forced from my home simply because of my heritage.

The obstacles you had to overcome serve as a reminder to us and to future generations that the rights and freedoms we enjoy as citizens of the United States should never be taken for granted. You can be proud of your many contributions to the betterment of our nation.

Please accept my congratulations and best wishes tonight.

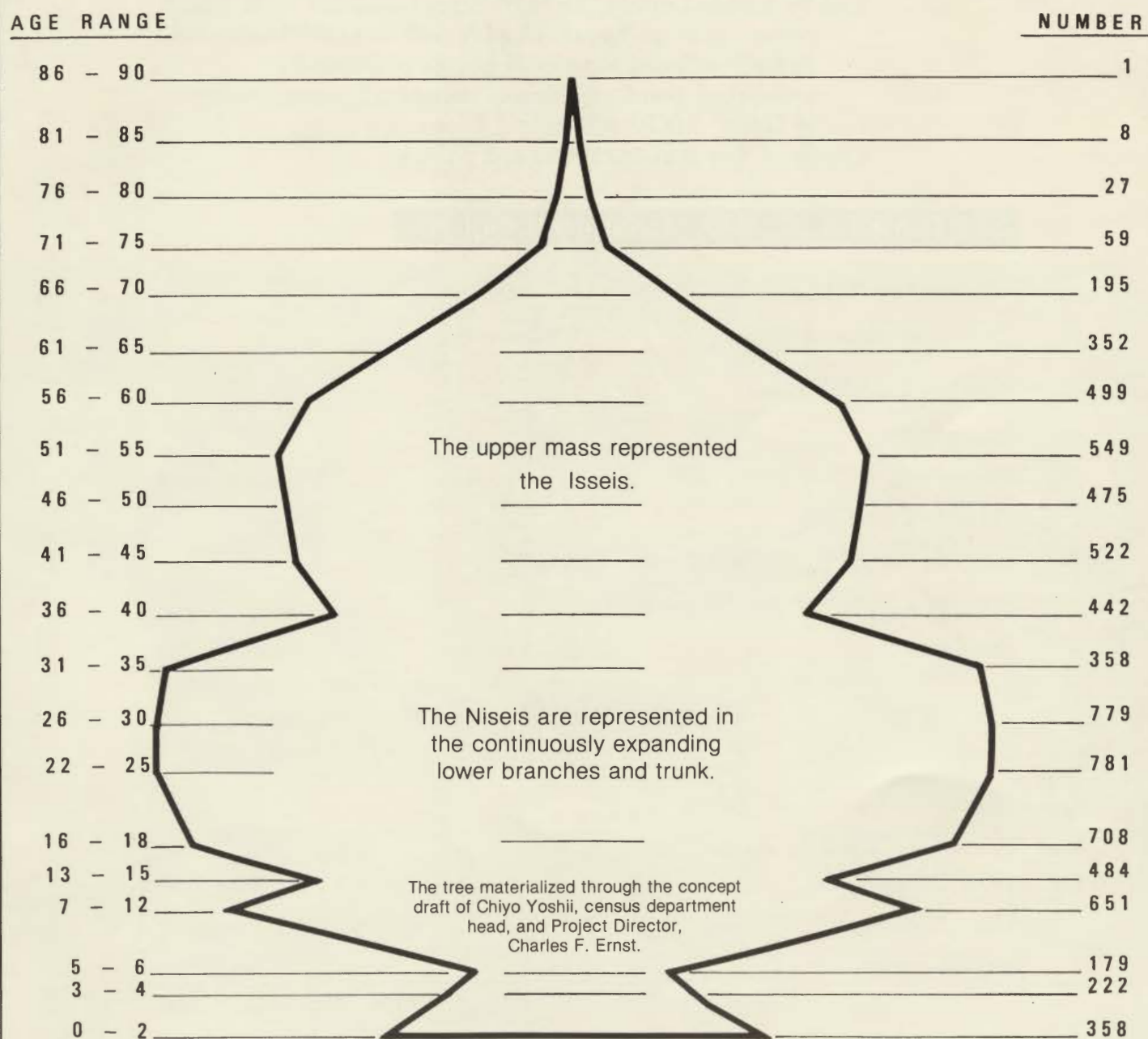
Sincerely,

Louis J. Papan
Chairman, Assembly Rules Committee



Tree of Topaz

The Tree of Topaz was the official shield of the Topaz Relocation Center representing the number of people in graphic form.





Program

SEPTEMBER 24, 1983 - Afternoon

"Topaz Remembered"

JACL Hospitality Room

1765 Sutter Street, San Francisco

12:00-4:00 p.m.

Film - Dave Tatsuno

Slides - Mas Kawaguchi

Jane Beckwith: Delta, Utah High School students' multi-media presentation on Topaz. Display will include: "Prayer for Peace"; series of pictures of people in Topaz by artist/poet Yonekichi Hosoi (1874-1951) former resident of Japan, San Francisco and Topaz.

Copies of Topaz publications and photos.

SEPTEMBER 24, 1983 - Evening Banquet

Presidio Officers Club, San Francisco

Chairman: Mas Ashizawa

No-Host Cocktail Hour

Registration

Invocation Rev. James Toda

Dinner - Prime Rib

Introduction of Guests and Former Teachers

Statement from Senator Milton Marks

Speakers Dr. Harry Kitano
Topic: "Reflections"

Jerry Enomoto
Topic: "Perspectives"

Introduction of all the Tables

Prizes for Classes of '43 and '44

Door Prizes

Short Slide Show Mas Kawaguchi

Sing-A-Long Paul Tani
Chiyo Date Iino, pianist

Picture Taking Class of '43; Class of '44;
Rest of Group

Dancing (Upstairs)



Program

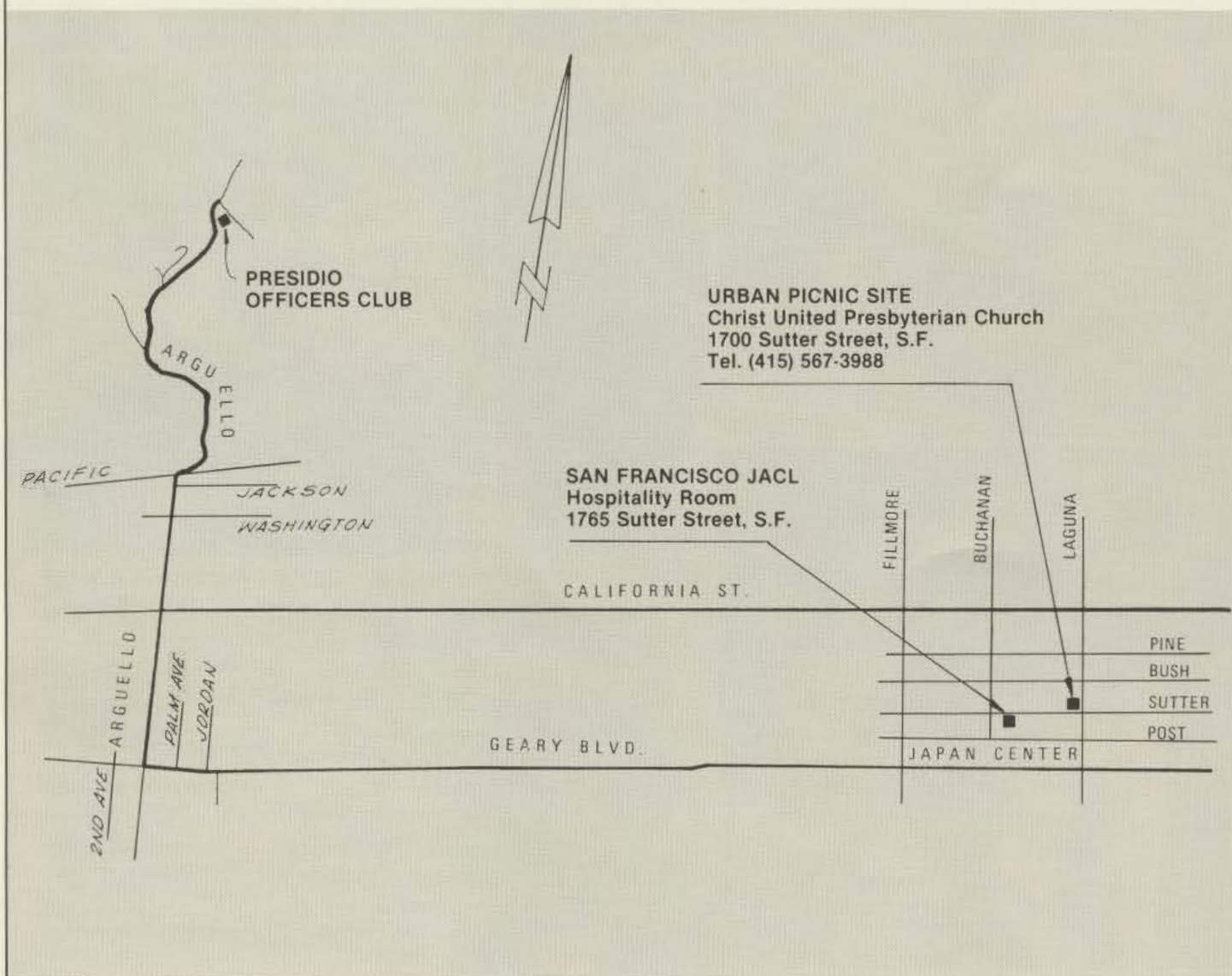
SEPTEMBER 25, 1983

Urban Picnic
Christ United Presbyterian Church
1700 Sutter Street, San Francisco
Tel: (415) 567-3988

Chairman: Ki Tanamachi

12:00-4:00 p.m.

Registration
Bento Lunch
Social Get-together



THE GINZA

DISCOUNT IMPORTS



Everything under the sun
from the Orient to you

IMARIWARE

ORIENTAL PORCELAIN ITEMS

ORIENTAL DINNERWARE

SATSUMAWARE

TEA SETS

RATTAN BASKETS

BRASSWARE

TEAKWOOD STANDS

LAQUERWARE

HAPPI COATS

KIMONOS

KARATE-JUDO SUITS

Low, low prices... We done your shopping for you..
from our wandering all over the Orient we bring
you the color, excitement, charm and the most
unique items the Orient has to offer.

JAPAN CENTER

BUCHANAN & POST ST., SAN FRANCISCO, CALIF. 94115
922-2475

Best Wishes from Bay Area Professionals...

- | | |
|---|----------|
| Jimmie Higashi, M.D. | 992-1920 |
| 48 Park Plaza Drive, Daly City, CA 94015 | |
| Dean R. Hirabayashi, M.D. | 362-3364 |
| 291 Geary St., Suite 700, San Francisco, CA 94102 | |
| Robert K. Kiyasu, M.D. | 386-4600 |
| 3905 Sacramento St., San Francisco, CA 94118 | |
| William S. Kiyasu, M.D. | 752-8038 |
| 3905 Sacramento St., San Francisco, CA 94118 | |
| Maybelle S. Okawaki, M.D. | 922-4277 |
| 403 Laurel St., San Francisco, CA 94118 | |
| Himeo Tsumori, M.D. | 776-5295 |
| 2107 Van Ness Ave., San Francisco, CA 94109 | |
| John Umekubo, M.D. | 931-5182 |
| 1674 Post St., #3, San Francisco, CA 94115 | |
| John Fong, D.D.S. | 563-2000 |
| 1788 Sutter St., Suite 201, San Francisco, CA 94115 | |
| Robert N. Hata, D.D.S. | 653-7012 |
| 5277 College Avenue, Oakland, CA 94618 | |
| Benjamin Ichinose, D.D.S. | 982-0990 |
| 450 Sutter St., San Francisco, CA 94108 | |
| Harold H. Itokazu, D.D.S. | 776-2010 |
| 2305 Van Ness Ave., San Francisco, CA 94109 | |
| Frank T. Kami, D.D.S. | 845-1396 |
| 1811 University Ave., Berkeley, CA 94703 | |
| Saburo Kami, D.D.S. | 751-1110 |
| 3633 California St., San Francisco, CA 94118 | |
| Harry Manji, D.D.S. | 421-1332 |
| 490 Post St., Suite 711, San Francisco, CA 94102 | |
| Wynn M. Matsumura, D.D.S. | 387-8600 |
| 403 - 25th Ave., Suite A, San Francisco, CA 94121 | |
| Donald T. Nakahata, D.D.S. | 752-5244 |
| 500 Spruce St., Suite 203, San Francisco, CA 94118 | |
| Dennis D. Shinbori, D.D.S. | 563-2000 |
| 1788 Sutter St., Suite 201, San Francisco, CA 94115 | |
| D. Ken Yoshikawa, D.D.S., M.S. | 668-1123 |
| 500 Spruce St., Suite 203, San Francisco, CA 94118 | |
| Imperial Dental Laboratory | 324-0935 |
| 915 Cowper St., Palo Alto, CA 94301 | |
| Hiura & Hiura, O.D. | 776-2352 |
| 1418 Polk St., San Francisco, CA 94109 | |
| Lloyd A. Shinkai, O.D. | 668-4233 |
| 414 Clement St., #1, San Francisco, CA 94118 | |
| Steven J. Doi, Attorney at Law | 775-8200 |
| 1032 Broadway, San Francisco, CA 94133 | |
| Kent S. Hori, Attorney at Law | 982-1082 |
| 563 Clay St., San Francisco, CA 94111 | |



Who Are They?

(1) Annabelle Uyeda Lee
 (2) Min Ishida, Mrs. Ishida, Shichiro Yokomizo
 (3) Tsuki (Takaha) and Arthur Peterson
 (4) Mary McMillan
 (5) Shinji Momono
 (6) Shiz (Moritomo) Tanabe
 (7) Rose (Adachi), Tom, Dee (Ty's girlfriend), Ty Miyahara
 (8) Eiko (Hosoi) and Hiro Katayama with grandchild
 (9) Harry Kawabata
 (10) Tomio Katsura
 (11) Miyo (Moritomo) and Tok Onoda
 (12) Chiko Haramaki
 (13) Fred and Kim Hayashi.

Best Wishes
for a
Happy Reunion

GROWERS PRODUCE

380 THIRD STREET
OAKLAND, CALIFORNIA

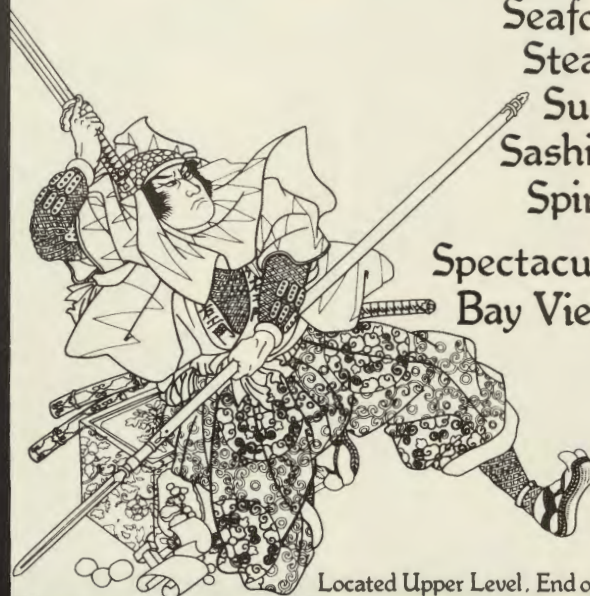
GEORGE USHIJIMA
HARRY USHIJIMA

ARCHIE UCHIYAMA
JIM USHIJIMA

**Teppan Yaki & Traditional
Japanese Cuisine**

Seafood
Steaks
Sushi
Sashimi
Spirits

Spectacular
Bay Views



Located Upper Level, End of Pier

RESTAURANT
NAKAMURA

421-6818 · PIER 39 · SF

FREE PARKING WITH DINNER





**JAPANESE AMERICAN
CITIZENS LEAGUE**

MRS. FRANCES MORIOKA
Administrator

**JACL
CALIFORNIA BLUE SHIELD
GROUP HEALTH PLAN**

1765 Sutter Street
San Francisco, CA 94115
Phone: (415) 931-6633

*Best Wishes to
Topaz High School
Classes of '43 & '44*

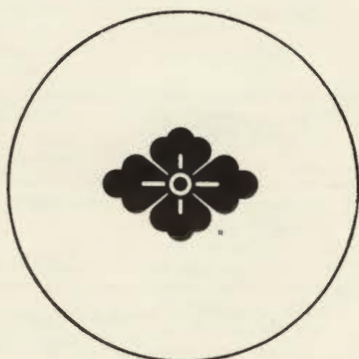


"the idea company"

Yasutomo & Co.

500 Howard Street, San Francisco, CA 94105
(415) 981-4326

OTAGIRI



475 Eccles Avenue
South San Francisco, Calif. 94080
(415) 871-4080

**Best Wishes for a
Successful Reunion**

**KOJIMOTO PRINTING
SERVICE**

AND



**ONISHI/KOJIMOTO
GRAPHICS**

5522 GEARY BOULEVARD
SAN FRANCISCO, CA 94121
(415) 668-2448



Update...

NAME	S: SPOUSE C: CHILDREN	HOBBIES, INTERESTS, ORGANIZATIONS	FAMILY, WORK, MESSAGE TO FORMER SCHOOLMATES
ROSE F. MIYAHARA (ADACHI) 9300 Somerset Drive Overland Park, KS 66207	S: Tom C: Ty	Lazy and enjoying life—reading, garden- ing, usual household duties. Seasonal worker at IRS as clerk.	Tom works for Interstate Bakeries as corporate Quality Control Manager. We moved a great deal during our marriage due to job changes. Ty is managing a Wendy's, fast food, in Florida. Please get in touch if in Kansas City area.
ANNABELLE LEE (UYEDA) 3816 Victoria Avenue Los Angeles, CA 90008	C: Victoria & Larry Higashi; Brent & Lorin, Terry Lee, Leslie Lee	Needlepoint, crocheting, knitting, golf. JACL (I was on the steering committee to form the new Greater LA Singles Chapter of JACL which became a reality in Feb. 1983.)	Business Administrator - TRW, Redondo Beach. Did anyone get younger? If so, please send me the magic formula.
SHIZUE TANABE (MORITOMO) 15554 Tracy Street San Lorenzo, CA 94580	S: Harry C: 6	Crochet, knit, anything artistic, indoor- outdoor plants. Eden JACL, Ladies Aux. 9879, Veterans of Foreign Wars, Golden Gate Nisei Memorial in San Francisco.	Four grandchildren. Grandson was crowned 1981 Cherry Blossom Festival Tiny Tot Prince. I work part-time for San Lorenzo School District Cafe- teria serving hot lunches to students. Will be great to meet some of you again in Sept.
CHIKO HARAMAKI 789 Stratford Drive State College, PA 16801		Skiing, sailing, fresh & saltwater fish- ing. National Ski Patrolman, former Patrol Leader & Section Chief. Faculty Advisor, Penn State Ski Club. Member and past officer in number of scientific societies.	Professor of Ornamental Horticulture, Pennsyl- vania State University. Teach plant propagation & arboriculture, research, plant growth regulators (herbicides and tissue culture). Looking forward to seeing you after 40 years.
TOMIO KATSURA 6732 Pino Real El Paso, TX 79912	S: Cristina C: Maria Christina, Nathan Keith	Interests: Astronomy & physics, human- ities, animals, health medicines. Hobbies: electronic gadgetry, tele- scopes, model building.	Retired from White Sands Missile Range, NM. Federal Service. New endeavor: Formed partner- ship in LNK Engineering Services. Space flight and rocketry became real after all.
TSUKI JUDY PETERSON (TAKAHA) 27602 Road 388 Kersey, CO 80644	S: Arthur C: Brian, Linda, Glenn	Don't have much time (nor energy) for hobbies and interests after farming. All the children are gone so I'm the "hired- man" - but I really like the outdoors. We go to the Kersey Community Church where Art has helped out with his handiwork in carpentering, cabinet making, etc. His newest contribution is the cross in the sanctuary. I'm mar- ried to a "talented man," methinks.	Decided to raise the children on a farm so bought the first farm in Kersey, CO in Jan. 1961. Latch- ed onto another farm a mile away, so when ad- verse weather hits we don't lose out completely. We have been lucky in raising three pretty good kids. I'm planning to see quite a few of you this Sept. but with farming it's anybody's guess as to when you can get away. If I don't make it, thanks to the committee for all the hard work that it has taken to get this reunion together. Wishing every- one good health.
FRED HAYASHI 6914 High Road Darien, IL 60559	S: Kim C: Susan Thompson Chuck Thompson (Son-in-law)	Fishing sports, travel.	Employed as warehouse manager for a large retail chain with over 180 stores in 27 states. In charge of hiring personnel for warehouse, distribution of merchandise to the stores and other related duties. The privations we suffered in our early youth I do believe has made me a stronger person and better able to cope with stress situations.
TOYOKO FUJII (TSUGAWA) 2225 Babette Way Sacramento, CA 95832	S: Jim C: Jeanne Yamashita, James	Sewing, dancing, bonsai.	Presently employed with the Sacramento City Unified School District as clerk, Children's Center at Skills and Business Children's Center.
TEIKO KITAGAWA (HIDESHIMA) 152 16th Avenue San Francisco, CA 94118	S: George C: Kenneth, Katherine, Keith		Pan American
KIKI KATHERINE MIHO 1575 Spring Street Mountain View, CA 94043	C: 3 daughters		2 grandchildren.
ALICE H. OSHIMA (IWAKI) 154 Paloma Avenue San Francisco, CA 94127	S: George C: Ronald, Gerald, Kathleen, Suzanne	Swimming, writting.	Husband is CPA. I am a teacher at City College of San Francisco.
EDITH S. MARUBAYASHI 1121 Cypress Avenue San Mateo, CA 94401			Medical secretary at local hospital.
KIYO JEAN KARIYA (ITO) 477 Fort Lee Road Leonia, NJ 07605	S: Shig C: Steven (MD), Scott, Kent	Hobbies: Travel, golf, ikebana. Organizations: Ikebana International, JACL, Japanese Assn. of New York.	IBM for 7 years (Executive Secretary). Retired to raise family. Looking forward to reunion and resuming old friendship.
FLORENCE S. KINOSHITA (YOSHIDA) 14 Cedar Grove Ct. Sacramento, CA 95831	S: George C: Susan, Jon	Art and crafts. State Women's Club, VFW Auxiliary	State employee.



Update...

NAME	S: SPOUSE C: CHILDREN	HOBBIES, INTERESTS, ORGANIZATIONS	FAMILY, WORK, MESSAGE TO FORMER SCHOOLMATES
MARION T. SUZUKI (OISHI) 9095 W. Palm Ave. Winton, CA 95388	S: Frank C: Lori, Wendy Hori- koshi, Heidi, Tami, Teri	League of Women Voters, Methodist Church.	Frank and I have a ranch in Merced County where he farms almonds and grapes. I was busy helping him raise sweet potatoes and 5 daughters until 1970. Since then, have been working as a register- ed physical therapist with handicapped children. Memories of Topaz are mixed - happy thoughts of high school - but let's make certain that nothing like our incarceration ever happens to anyone again!
MOTOICHI YANAGI 1540 Bockman Road San Lorenzo, CA 94580	S: Dorothy C: Amy, Ann, Gayle & Glenn		General Engineering Contractor
JIM K. KIRIHARA 3019 Cavell Ave. S. St. Louis Park, MN 55426	Wife and 3 children	Boating and fishing. Am quite interested in foreign travel - Europe, Mexico & Japan.	Employed by Thermo King Corp, a Westinghouse Elect. Subs. Am an accountant on the Financial Planning staff.
FRANK T. KAMI 1468 Summit Road Berkeley, CA 94708	S: Miyoko C: 2 boys	Tennis	Dentist
KIYOKO OTSUKI (TATE) 5748 Victoria Lane Livermore, CA 94550	S: Henry C: Lauren, Keith		
SACHIKO BARHAM (HONDA) 1845 Rivers Street San Pablo, CA 94806	C: Alan J. Matsumoto, Rebecca J. Morita, Leah T. Barham, Donna G. Barham		2 grandchildren.
ADA KAWAMOTO (NAKAGIRI) 271 Amber Drive San Francisco, CA 94131	S: Isao C: James Jiro, Ann Keiko		
MIN AKIYOSHI 817 Oak Avenue Davis, CA	S: Ruby C: Jeanne, David, Joyce	Golf, snorkeling, scuba, racquetball, travel. American Society of Enologists (Professional Wine Society)	Senior Scientist at Gallo Winery, Modesto. Hang in there!
ROBERT I. NAGATA 1660 11th Avenue San Francisco, CA 94122	S: Takeko (Doi) C: Denise, Donna, Mark	San Francisco. JACL	Employment: California First Bank, San Francisco Head Office
MIKE Y. ICHIMARU 64 Exeter Avenue San Carlos, CA 94070	S: Yuri (Nakatani) Class of '44 C: Lynn, Russ, Tom, Cynthia, Scott		Own business: Exhibits of California Inc., Menlo Park, CA 94025 4 grandchildren.
SODATSU (Sodie) ISHIDA 508 Edgemar Ave. Pacifica, CA 94044	S: Kikuko (Nakagiri)	Camping, fishing and touring by automobile. Woodwork, fixing cars, etc.	Sodie: Shop Inspector in Engine Shop, United Airlines. Kiko: Registered nurse at S.F. General Hospital.
PAUL T. NOMURA 889 Hillside Ave. Albany, CA 94706	S: Betty C: Carrie, Carl		
KAZUKO TANABE (NOSE) 1102 Wilmington Ave. San Jose, CA 95129	S: Arthur C: Jerry, Karie	Quilting, Bowling	Associate Accountant. Husband: Self-employed rug and upholstery clean- er and carpet installation.
ROY HARANO 720 West "F" North Platte, NE 69101	S: Kazu (Nao) Class of '45 C: 4 boys	Golf, snow skiing, Rotary Club	
JAMES Y. TODA 15862 Corte Gernaldo San Lorenzo, CA 94580	S: Alice C: Daniel, Mark, John		Pastor, English Department, San Lorenzo Japanese Christian Church.
MAE WATANABE (HIKIDO) 2645 W. Howard Street Chicago, IL 60645	S: Paul C: Dale, Joni	Handcraft, needlework, baking, danc- ing are hobbies and interests. Member of Chicago Church of Christ. Sing in Church Choir, member of church's Women Fellowship.	Married 25 years; presently working in hospital (business office) for past 5 years.
IAN ALBERT NABESHIMA 7325 Chabot Road Oakland, CA 94618	Single		U.C. retired.



Update...

NAME	S: SPOUSE C: CHILDREN	HOBBIES, INTERESTS, ORGANIZATIONS	FAMILY, WORK, MESSAGE TO FORMER SCHOOLMATES
AIKO SUYEYASU (MATSUMOTO) 878 Northampton Drive Palo Alto, CA 94303	S: William C: Linda Iwamoto, Sharon, Lane, Sandra, Sherrie	Crochet and other handcraft. Palo Alto Buddhist Temple, Palo Alto Buddhist Fujin Kai, Palo Alto Buddhist Yuwa Kai committee (Senior Citizen Club).	Housewife. 2 grandchildren.
STAN SATO 6315 Fordham Way Sacramento, CA 95831	S: Edith	Travelling, photography. Organizations: ADA, GDA, SDDS, FDI, JACL, UCSF Dental Alumni Assns. and Republican Party.	
MICHIKO KAWAGUCHI (HARA) 8192 Grant Drive Huntington Beach, CA 92646	S: Koji C: Bruce, Brian		Retired. Koji works in Data Processing for Los Angeles City Schools. 4 grandchildren.
TOMIKO H. MIYAOKA (HASE) 15075 Oak Hills Drive Salinas, CA 93907	S: Tommy C: Julia, Jeffrey		
JOSEPH T. INATOME 2472 Mulberry Bloomfield Hills, MI 48013	Nan, Rick, Lisa, Joseph Corwin	Computers, photography, stamp collecting, swimming	Consulting Mechanical Engineer. Owner & Board Chairman of Computer Mart of Michigan. Greetings from Michigan! Will definitely be back in September to see old classmates from Topaz.
HAGI KUSUNOKI (TERAMOTO) 1738 Redcliff Street Los Angeles, CA 90026	S: Shinobu George C: Paul, Sharon, Gary		
RICHARD YOSH FUJITA 3548 W. 129th Cleveland, OH 44111		Tournament fly and bait casting, fly fishing, rod building. Member of American Casting Association, Trout Unlimited, Federation of Fly Fisher- man.	No family. Work: Structural Engineering.
HENRY OBAYASHI 66 Inyo Place Redwood City, CA 94061	S: Mary Jo C: Linda, Sandra, Douglas	Golf	Assistant Assessor, San Mateo County
SHICHIRO YOKOMIZO 25649 Barnard Street Hayward, CA 94545	S: Sally (Kido) C: Stephen, Janis, Douglas	Fishing, camping and traveling.	Work??? What's that??? Retired after 35 years at Naval Air Rework Facilities, Alameda, CA.
ABU GUILDAY (KEIKOAN) 1219 Silver Ridge Way Sacramento, CA 95831	S: John C: Cathleen, Patrick	Jogging, weight lifting, Japanese Culture.	Been working at Mather Air Force Base for 13 years. Secretary for the 452nd Flying Training Squadron commander. Only navigator school in the U.S.
BUBBLES KEIKOAN 5124 - 53rd Avenue Sacramento, CA 95823	Never married.	Bowling.	Work for the Disability Insurance, State of California.
HIDEO TAKETA 1487 South 6th East Salt Lake City, UT 84105	S: Midori	Fishing	
MARGARET TSUJIMOTO (TAKEUCHI) 381 Crestmont Drive Oakland, CA 94619	S: Minoru C: Karen, Eric		Karen is attending Yale University; Eric at U.C. Berkeley. Work: Registered nurse at Merritt Hospital, Oakland, CA.
NOBU OKABAYASHI (OKAMURA) P.O. Box 1022 Redwood City, CA 94064	S: Masao C: Kathleen, Dwayne		Cut flower grower.
GEORGE G. MURAKAMI 965 Oakley Street Salt Lake City, UT 84116	S: Betty C: Wayne, Douglas, Lorraine, Marcia	Playing slot machines.	4 children all married. 6 grand children. Produce Buyer Associated Food Stores.
KAORU NAKAMURA (KAWAHATA) 516 - 4th Avenue San Francisco, CA 94118	S: Yoshi C: Norman, Wayne, Kenneth	Latch hook rugs.	Housewife.
KAZUO YOSHII 532 Sea View Drive El Cerrito, CA 94530	S: Hannah C: Katherine, Kurt		



Update...

NAME	S: SPOUSE C: CHILDREN	HOBBIES, INTERESTS, ORGANIZATIONS	FAMILY, WORK, MESSAGE TO FORMER SCHOOLMATES
PAUL YOSHIO TANI 177 Thunder Lake Road Wilton, CT 06897	S: Sumiko Janet C: Tom, Jim	Sports spectator & follower; listening to music (golden oldies, pops, classics); exercise; survive! A Republican who voted for John Anderson all the way in 1980.	Computers since 1950. With IBM since 1962. I lost so much weight that when I weigh myself I have to hold weights to keep me from floating off the scale. Do as Dr. Tsumori says: Lose weight! Exercise! AH WAH TAH NAH SIAM!!!
SHOGI TAKATA 2323 Oregon Street Berkeley, CA 94705	S: Kim C: Wayne, Bruce, Kent	Movies, Berkeley Bears, Scouts Troop 26, JACL.	Social worker, Big Brothers Inc., San Francisco.
TOM IMAGAWA 1717 Hillman Avenue Belmont, CA 94002	S: Sueko C: Nancy, Arlene, Laura	Golf, travel.	3 daughters are married; 3 grandchildren. Mother is 78 years old and still driving. Employed at United Airlines for 26 years. Looking forward to seeing old friends and catching up on 40 years!
MICHI BARBARA YAMASHITA 5637 Jacks Lane Sacramento, CA 95822			Unable to attend reunion. Please accept my donation.
BILL OSHIMA 177 Taylor Street Pembroke, MA 02359	S: Helen C: 3		Employed by Mass. Dept. of Commerce in their Minority Business Division. We live on 17 acre farm in a solar and wood heated 200-year-old house. Wife operates herb plant business and we raise chickens and lambs for eggs/meat and have 3 bee hives. Cheers to group who're doing all the arrangements and organizing.
TOMOE (TEE) KINOSHITA (KANEMASU) 1385 Las Lomitas Circle Sacramento, CA 95831	S: Ted C: Mary Ann, Nancy	Art	Working for State of California Unemployment making millions!
T. CLIFFORD NAKAJIMA 57 Alta Mesa Circle Monterey, CA 93940	S: Nancy C: Steven, Scott, Grant	Stock investments; Rotary Club of Monterey Peninsula. Interests: To retire as soon as possible if and when children could support me!	Optometrist.
PAULINE A. ISHII (NAKAMURA) 98-1209 Kaamilo Street Aiea, Hawaii 96701	S: Robert C: Brian, Stanley, Myra	Anyone for tennis?	
MICKY MIYUKI YOSHIDA (HANANOUCHI) 13765 Harding Road Turlock, CA 95380	S: Frank C: Kent, Joni, Tami		Almond orchard.
NAMIYE OSHIMA (IHARA) 4829 Xerxes Avenue S. Minneapolis, MN 55410	S: John C: Kevin, Kristie, Kyle, Karin, Kathleen	Minnesota Women's Network, Zonta International; Minnesota Chair for the Children's Rights Program of the Alexander Graham Bell Assoc. for the Deaf, Wash. D.C.; Mpls. Girl Scouts Marketing Committee; Minnesota Weaver's Guild, Creekside Weavers & Free Lance producer and weaver.	Presently the Executive Director for the Hearing Society of Minnesota. Retired after 25 years with WCCO-TV, (Mpls. CBS Affiliate), Executive Producer for 12 years of a daily talk show, Director of the Public Service Dept. & Assoc. Director of Community Affairs. I hate missing out on all the reunion planning, but I'm sure you're all working hard at it and I thank you for planning all this for all of us coming!
FUMI HAYASHI (MANABE) 1629 Jaynes Street Berkeley, CA 94703	S: Tad C: Steve, Liz, Sue	Community volunteer.	Employed at U.C. Berkeley. I married Tad Hayashi. We met at Tanfo.
YONE ITO (KATO) 567 Carmar Street Hayward, CA 94544	C: Kathleen, Scott	Oriental brush painting, knitting, beginner golf. Eden JACL, Stanford Mothers Club (scholarship fund raising for Stanford U. students).	Typography business for 22 years. Parents will be celebrating their 60th wedding anniversary in October, 1983.
ROSCOE BELL 2145 W. Santram Drive Woodburn, OR 97071	S: Gladys C: Paul, Earnest, Winifred (Payne), Gordon	Travel in our mini motor home; children and grandchildren.	Government, U.S. and State of Alaska, University of Wisconsin.
MASARU "Mas" KAWAGUCHI 2262 21st Avenue San Francisco, CA 94116	S: Ida C: Todd, Jeffrey, Mari	Bonsai: Japanese art of dwarf trees. Suiseki: Japanese art and enjoyment of viewing stone in its natural form. The contemplation of the stone as a symbol of nature relaxes the mind from the pressure of the complex daily life and allows one to retain the sense of value.	Ida, registered nurse, Geriatric Services, Community Mental Health, Dist.V; Todd, S.F. Fire Dept.; Jeffrey, accountant; Mari, computer program analyst, Gen'l Telephone & Electronics. Welcome and thanks for coming to the Topaz Reunion. My deep appreciation to committee members for making this occasion a memorable event.

AZUMAYA PRODUCTS

TOFU AGE (FRIED SOY BEAN CAKE) NAMA-AGE
(FRIED SOY BEAN CAKE) SHIRATAKE or SUKIYAKI
NOODLES KONNYAKU (YAM CAKE) CHOW MEIN
NOODLES U-DON (JAPANESE NOODLES) WON
TON SKIN GYOZA (ROUND WON TON SKIN) EGG
ROLL U-DON w/SHRIMP FLV. CHINESE NOODLE
w/SOY FLV.



AZUMAYA, INC.

MIZONO BROS.

1575 Burke Ave., San Francisco, CA 94124 (415) 285-8500

We'll see to it that your trip is a good one.

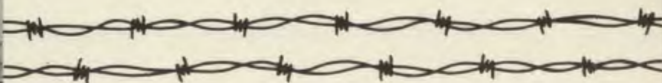
Everyone has different travel expectations. Different adventure en route. And different impressions of what they see. That's why Pacifico Creative Service regards each journey as a one-of-a-kind experience. PCS — all the help you need to make your trip a good one.

PCS TRAVEL

■ IMMEDIATE ACCESS TO TOTAL RANGE OF TRAVEL SERVICES

- PCS/HONOLULU (808) 926-3896
- PCS/NEW YORK (212) 867-1097
- PCS/SEATTLE (206) 682-8350
- PCS/LOS ANGELES (213) 680-2125
- PCS/VANCOUVER (604) 689-1213
- PCS/SAN FRANCISCO PHONE (415) 397-9146
150 Powell Street at O'Farrell, Suite 304, S.F. CA 94102

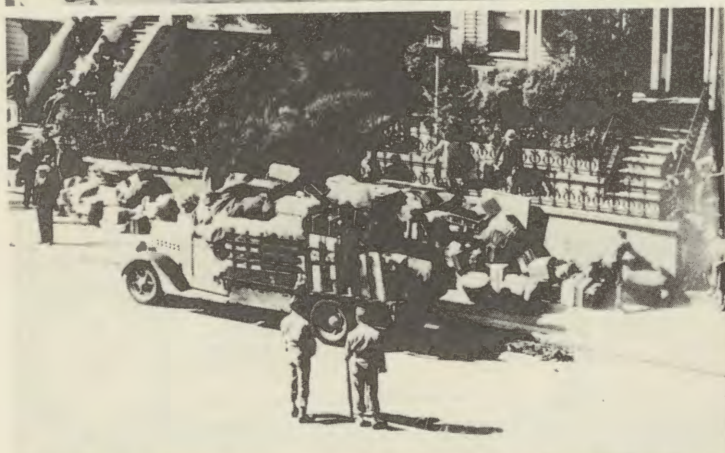
Spot Vacance



TANFORAN

ASSEMBLY CENTER

San Bruno, California
April-September, 1942





Fuji's PLANT OUTLET

• 24949 Soto Road at Orchard • Hayward, CA 94544 •



AMERICAN FISH MARKET CO.

DOWKE/TAKEOKA, INC.

GOURMET PRODUCE JAPANESE FOOD FRESH FISH

1790 Sutter Street
San Francisco, CA 94115
Phone: (415) 921-5154 / 921-5253



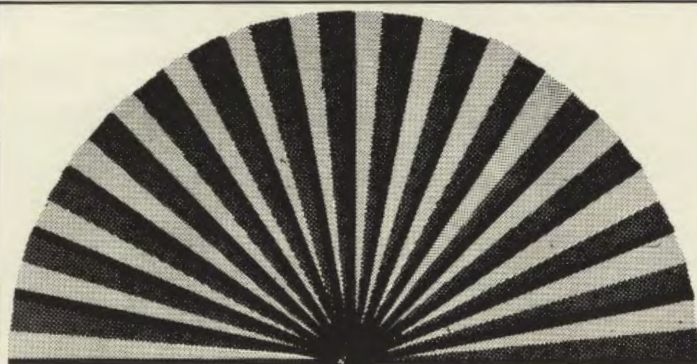
KOCH & SAKAI LANDSCAPES

- Consulting/Planning Assistance
- Landscape Blueprints • Installation
- Custom Decking & Fences
- Sprinkler Systems • Lawn Installation
- Drainage/Grading Engineering
- Quality Brick, Rock & Concrete Paving
- Ponds, Fountains & Waterfalls
- Japanese Garden Design Specialists

Cal. Lic. #397747

Estimates
582-1699

U.C. Graduates in Horticulture & Landscape Design



CLASSIC
JAPANESE CUISINE
LINKING
EAST TO WEST

A dining mood of
quiet serenity
Kimono-clad waitresses
preparing food
with exquisite artistry.

PHILOSOPHY
IN HAIKU
AND
A WAY OF LIFE

In the garden of friends
Spring buds open.
Fans blossom.
A weary heart smiles.

Since 1946

yamato

Japanese Restaurant and Sushi Bar

San Francisco •
717 California at Grant
(415) 397-3456

Los Angeles •
Century Plaza Hotel
(213) 277-1840

Newport Beach
Sixty Fashion Island
(714) 644-4811

*Travel/Holiday Award**Four Star Mobil Award



SHIMA TRANSFER CO.

74 Mission Rock
San Francisco, CA 94107

Phone: 982-5430

ようこそ

新宿

Shinjuku

HARU YAMAMOTO

COCKTAIL LOUNGE

JAPANESE CULTURAL & TRADE CENTER
WEST BLDG. 1581 WEBSTER STREET
SAN FRANCISCO, CALIFORNIA 94115

Easy to Handle,
The Price is right.
KIKKOMAN



BRAND
NEW
SIZE

40 oz Bottle



KIKKOMAN
International Inc.
S.F., L.A., Chicago, New York, Atlanta,

Petrini's PLAZA

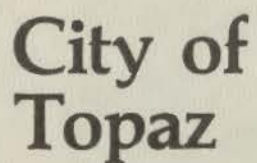
Quality and Service
always at **FALLETTI BROS.**

- Fresh Produce
- All Grocery
- Petrini Meat Dept.
- Wine Shop
- Fish and Poultry
- Plaza Bakery
- The Deli
- Maison Gourmet

ALL STORES OPEN SUNDAYS

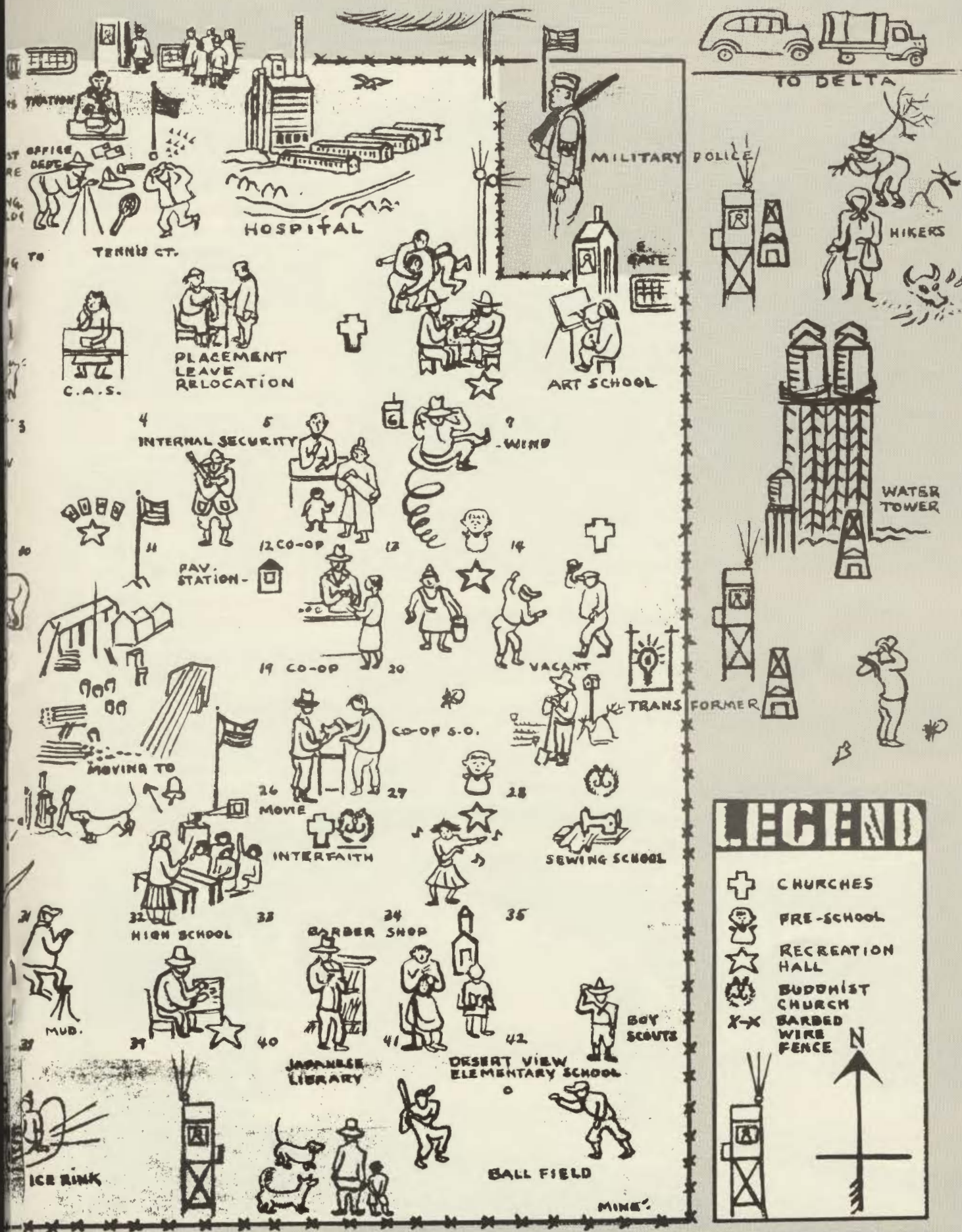
FULTON & MASONIC
SAN FRANCISCO





A hand-drawn map of the Okubo internment camp, showing various buildings, activities, and surrounding features. The map is enclosed by a barbed wire fence with guard towers at the corners. Inside the camp, labeled buildings and areas include: CORPORATION YARD, MOSQUITDES, ROOT CELLAR, RACKING SHED, CARPENTER SHOP AND ADM., GAS PUMP, GARAGE, SEWER ODOR, MUSIC, SCHOOL, WAREHOUSE, HAWAIIAN, C.C., APPO PERSON, MOUNT ELEMI SCHOOL, BARBER SHOP, VACANT, and SEPTIC TANK PUMP HOUSE. Activities shown include a person working in a root cellar, a person playing a piano, a person working at a desk, a person working in a warehouse, a person working in a barber shop, and a person working in a vacant lot. Surrounding features include a CALIFORNIA sign, a guard tower, a SEWER SWAMP 1/2 MILE, a SEWER, and a PASS OFFICE.





LEGEND

- ✚ CHURCHES
- ☺ PRE-SCHOOL
- ★ RECREATION HALL
- ☸ BUDDHIST CHURCH
- ✕✕ BARBED WIRE FENCE



CITY OF TOPAZ



The Topaz Block

Welcome to our block!
Every Topaz residential block is uniform. With 12 barracks to a block, there are a community dining hall, laundry room, block manager's office, and a latrine to serve each block. Every block has two sets of outdoor clotheslines in addition to the indoor. Block capacity is 250 to 300 persons.

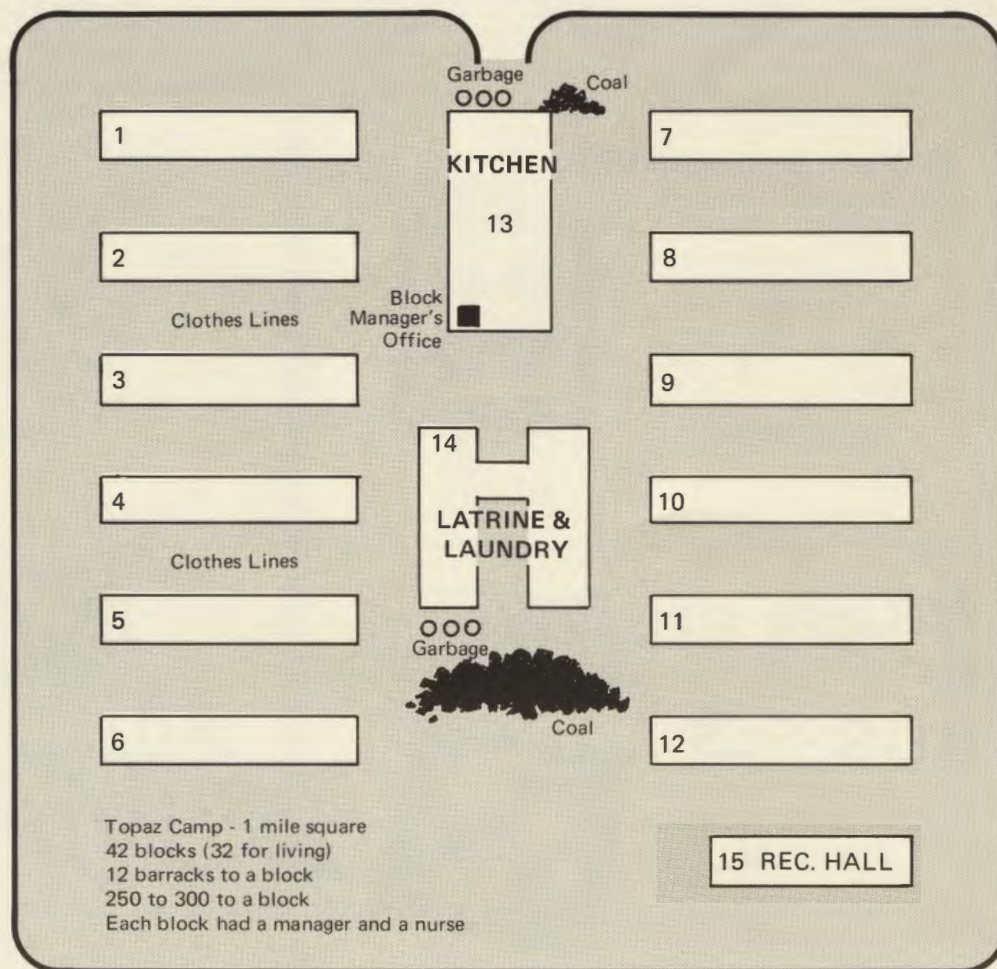
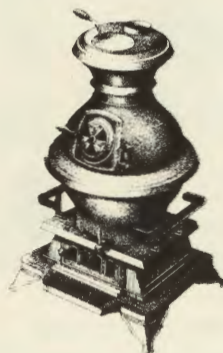
Every block is represented in the Community Council and Co-operative Enterprises. Block shopping is being regularly done by the block people in a round robin arrangement. Block meetings are held when emergencies and regular block issues occur. Oral and written bulletins are prepared for the general public.

A block manager is available for the general welfare, aided by an assistant. Janitors, firemen, and a yardman are furnished.

The dining hall personnel is composed mainly of the block residents. The main dish in the menu is diversified: fish twice weekly, pork sausage, liver, heart, tongue, chop suey, tripe, roast pork, spare ribs and meatless days.

Each block has its nurse who first handles all medical cases arising within her section. For an ambulance service she is the person to see.

—From Welcome to Topaz Bulletin





NAKASHIMA'S

**RETAIL SPECIALISTS
TV & APPLIANCES
SALES & SERVICE**

14341 E. 14th STREET
SAN LEANDRO, CA 94578
(415) 357-1922

LAWRENCE NAKASHIMA
AL J. NAKASHIMA

NEISHI BROS. NURSERY

359 - 105th Avenue
Oakland, California 94603
(415) 632-9274

THOMSON MCKINNON SECURITIES INC.

GEORGE K. YAMAMURA
Account Executive

330 PINE STEET
SAN FRANCISCO, CA. 94104 415/781-5600

ようこそ



LOTUS GARDEN VEGETARIAN RESTAURANT

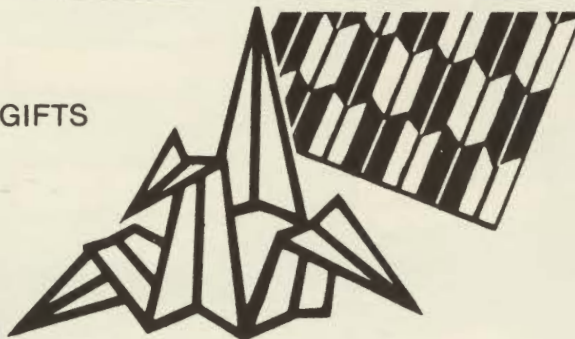
Chinese Vegetarian Cuisine
Owned and operated by WISHFUL KITCHEN INC.

FRANK P. MACK, General Manager

532 GRANT AVENUE
SAN FRANCISCO, CA 94108
Phone: 397-0130, 397-0706
CLOSED MONDAYS

NICHI BEI BUSSAN

- KIMONOS
- FUTONS
- TRADITIONAL GIFTS



日米物産

SAN FRANCISCO 94115

1715 BUCHANAN MALL

SAN JOSE 95112

140 JACKSON STREET



FUJIYA INTERNATIONAL, INC.

TEPPAN-STEAK & SUSHI BAR

One Embarcadero Center, San Francisco
(415) 398-1151

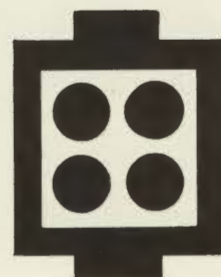
Prune Yard Shopping Center, Campbell
(408) 377-2686



Best Wishes for a
memorable, happy reunion
and to those who
made it happen.

**YONE ITO
TYPOGRAPHY**

567 CARMAR STREET • HAYWARD, CA. 94544
(415) 783-5520



赤 まん も
飯 じゅう ち

Nakata Co.

2043 Fillmore Street
San Francisco, CA 94115
Phone: 567-1677



We tagged our baggage with the family number, 13660, and pinned the personal tags on ourselves; we were ready at last.





Topaz, Utah

Compiled from Topaz Times, Trek, Citizen 13660 by Miné Okubo.
Edited by Fumi Manabe Hayashi

Topaz was located in West Central Utah in the Sevier Desert. The extremes of temperature ranged from 106° in the summer to 30° below in the winter. The rainfall averaged 8 inches and the wind blew all of the time.

1942

September 11, 1942

214 volunteer workers from Tanforan arrived at Delta. They were greeted by Director Ernst.

September 15

The Topaz Times was started by Henri Takahashi and Lily Tamaki. Originally, the paper was a single mimeographed sheet issued three times a week. Later the Times became a daily with a Japanese and a comic section. All news was censored by the administration staff.

September 17

The first contingent of evacuees arrived from Tanforan. They slept on mattresses stuffed with straw. There were open water ditches. Residents often fell into the ditches.

October 4

Dillon S. Myer, WRA Director, arrived from Salt Lake City.

October 15

The first movie, *Daltons Ride Again*, was featured at Rec. 22.

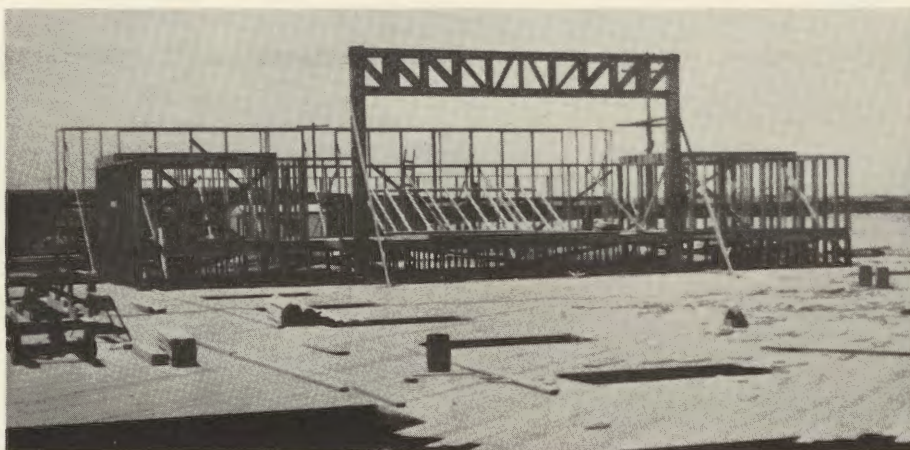
October 18

The Topaz Hospital was dedicated.

October 30

Registration for Topaz High began. The school followed a modification of California and Utah education codes. A "Code Curriculum" was adopted. There were 17 caucasian and 14 resident teachers.

The coal shortage was at its height. The first snow fell on Topaz.



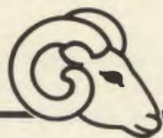
The beginning of Topaz High School Auditorium.



Assembly time.



Topaz, Utah



November 2

The Constitution of Topaz was drafted.

November 26

Turkey was served in all of the dining halls.

November 28

Volunteers, including a detail of the Military Police, and staff teachers, helped the maintenance division winterize Block 32 for Topaz High. All day classes have begun.

The town bell was formally unveiled at the High School Plaza.

Basketball game: Topaz All Stars vs. Delta High at Rec. 34.

December 24

The skating rink south of Blocks 37 & 38 was completed. The rink was designed by Moto Takahashi.

December 25

A white Christmas. Turkey was served.

1943

January 1

Mochi was served in the mess halls.

January 14

Gov. Herbert B. Maw of Utah was the honored guest.

The TREE OF TOPAZ representing the population of this Center was designated the official shield.

February 8

Lt. William L. Tracy announced the policies of the War Department in forming a Nisei Combat Unit.

February 10

Tuesdays and Fridays were designated as meatless days.

March 1

Topaz announced the volunteering of the three Yoshino brothers.



'49er hopefuls!



Cheerleaders take advantage of half time.



Topaz Hi Queens.



Topaz, Utah

March 22

The number of volunteers for the army rose to 112.

April 11

James H. Wakasa was shot and killed by a sentry on guard.

June 25

196 graduating seniors celebrated Senior Week with an outing, Baccalaureate Service and a Senior Prom. They graduated in caps and gowns at the High School Plaza.

Highlights of the school year included basketball and track teams that performed very well against neighboring schools - Delta, Fillmore and Hinckley. Performances of *Our Town* and *Little Women* were well received. Also memorable was the exciting *Play Day Mud Brawl*. Publications included the yearbook *Ramblings* and *Topazette*.

July 6

A gala July 4 Carnival raised money for student scholarships.

August 10

Dr. Golden L. Woolf resigned as principal. He has been recalled to Brigham Young University where he is a Professor of Secondary Education.

August 13

30 Seniors received their diplomas in the midsummer graduation.

Many seniors have been accepted to various Midwest and Eastern colleges and universities.

August 14

The Army recalled reservists from this Center.

August 26

The Gym/Auditorium has been completed.



Singing Topazians.



Extra! Extra!



Topaz graduates.



The movie theatre.



Topaz, Utah

September 11

Topaz became one year old.

The Gripsholm sailed from New York.

1944

April 2

First batch of tofu from the Center's tofu factory was distributed to the mess halls.

May 3

Topaz High tracksters in dual meet at Fillmore.

May 19

Sgt. Ben Kuroki visited Topaz. He received a warm welcome.

May 30

Charles F. Ernst, Project Director, left for Washington, D.C. for overseas duty with the United Nations Relief and Rehabilitation Administration. He served as Project Director from September 1, 1943 to May 30, 1944.

May 31

Agricultural section got 5000 meat chickens.

June 2

127 Seniors graduate.

Climaxing a week of senior activities, 127 seniors graduated.

Welcome Address:

Kiyoshi Tanamachi, Class President

Valedictory Address:

Sumako Aihara

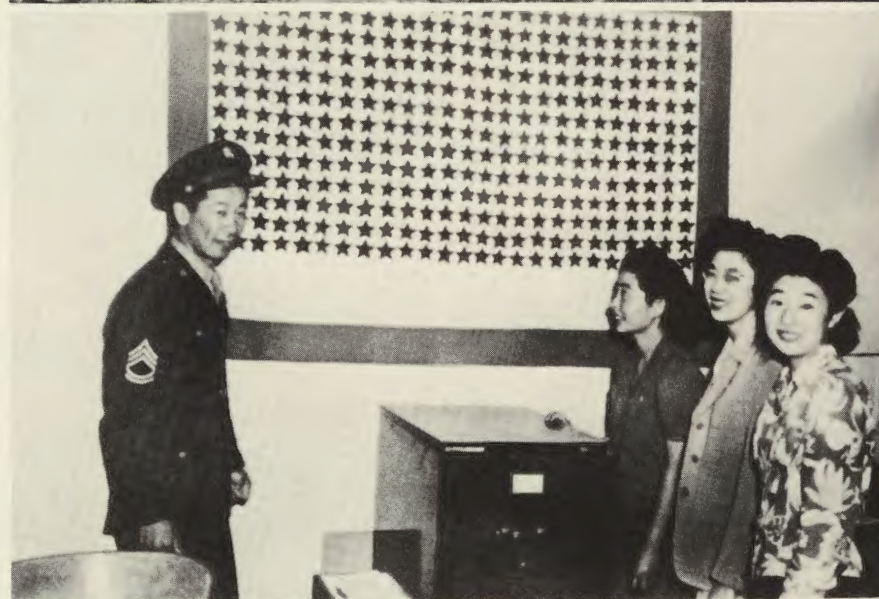
Salutatory Address:

Shichiro Yokomizo

Violin Selection:

Junko Maida

The class was addressed by Assistant Project Director, Roscoe Bell.



9CA-92-1966-P05



Topaz, Utah

1976

Monument placed at Topaz.

1980

August 16

35th Reunion of the Class of 1945, Topaz High.

1982

August

Reunion Committee for classes of 1943 and 1944 began working.

1983

The Journalism students at Delta High School, under the direction of Ms. Jane Beckwith, began to look for stories about Topaz. They were amazed to find little information in their libraries. So they decided to research and record first-hand stories from the local residents who were involved with Topaz.

1983 from the Delta Students

Now almost 40 years later, the desert near Delta, hasn't healed even though the barracks were moved in 1945. And the people who still live in the town haven't forgotten when trains brought 500 Japanese at a time, or the fresh fish market that sprang up then, or some of their friends with names like Yasuda or Kawakami that they still exchange Christmas cards with. Nor have the Japanese Americans forgotten. Some of them return periodically to the 17,000 acres of desert land with its one square mile of abandoned camp site. They look for remnants of the past and seek solace by telling the story of relocation. Though it was tragic and unhappy, they are proud that most of them faced the trial with courage and dignity befitting the traditions of their people, all the time hoping that by the telling, it may prevent another such tragedy from happening.





ANSHIN INSURANCE AGENCY

☐ KAZ "DUKE" TATE
171 Jackson Street
San Jose, CA 95112
(408) 287-9989

☐ JORDAN F. HIRATZKA
19-M Orinda Way
Orinda, CA 94563
(415) 254-3454

YUTAKA HANDA

KATS HANDA

S. HANDA SONS

Phone 626-9355



GENERAL CONTRACTORS
Lic. #150030



1034 FOLSOM STREET
SAN FRANCISCO, CA 94103



Bill

SUYEYASU

WHOLESALE FORIST, INC.

1239 North Fair Oaks Way
Sunnyvale, California 94086

WHOLESALE FLORIST - SHIPPER

(408) 734-3430

George Naganuma



METRO PLUMBING, INC.

Plumbing and Heating Contractors

Lic. No. 302755

(415) 641-4420

587 Shotwell Street
San Francisco, CA 94110

ABACUS

BUSINESS FORMS, INC.

1225 MACARTHUR BLVD.
SAN LEANDRO, CA 94577
(415) 352-9900

GREG P. YOSHII



dick
kin peeno

OGAWA-MUNE INC.

wholesale nursery stock • licensed and bonded
dealer and broker

123 mayhew road, fremont, ca 94536 • 415/793-7123



740 WASHINGTON ST. SAN FRANCISCO, CALIF. PHONE 781-5636

CLOSED ON MONDAY



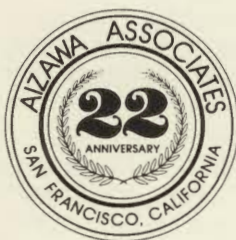
Office Supplies
Copy Service

Greeting Cards
Books & Gifts

PAPER TREE

NOB & SHIZ MIHARA

Open Days • 921-7100
1743 Buchanan Mall • San Francisco, CA 94115



AIZAWA ASSOCIATES

ADVERTISING / PHOTOGRAPHY
GRAPHIC DESIGNS

735 Bryant, San Francisco, CA 94107
Phone: (415) 543-5900

We are looking forward to
seeing our Topaz friends.

Fumi Manabe Hayashi
Machiko Nakamura Ota

Phone 567-5300

JOLYET SHOES

SHOES FOR MEN AND WOMEN
SPECIALIZING IN SMALL SIZES

1825 POST STREET
SAN FRANCISCO, CA 94115

藥
局

JIM'S DRUGS

KAHN YAMADA
MINORU YAMADA
PHARMACISTS

JAPAN CENTER • 22 PEACE PLAZA
SAN FRANCISCO, CA 94115 921-5893



AKI TRAVEL SERVICE

DOMESTIC - INTERNATIONAL TRAVEL

JAPAN CENTER - WEST BLDG.
1730 GEARY STREET
SAN FRANCISCO, CALIF. 94115

Tel: 567-1114

RICHARD'S Jewelers

RICHARD YAMASHIRO
CHRISTINE YAMASHIRO

TROPHIES • ENGRAVING
14K GOLD JEWELRY
DIAMOND RINGS, GENUINE STONE RINGS

1272 SOLANO AVE., ALBANY, CA 94706

524-6860



Local Look at the Topaz Japanese Relocation Camp at Delta, Utah

By The Delta High School Journalism Class
under the direction of Jane Beckwith

For most things 40 years is a long time. It's long enough to see a baby mature to adulthood, long enough to work and retire from a job, long enough for modes of travel and communications to improve many times. But for some things 40 years is insignificant. The desert of Utah is like that. Once it is marred, it may never heal. The human heart is like that and so is the mind.

On December 7, 1941, an event occurred that effected such a type of destruction on the world. Human lives were destroyed at Pearl Harbor and the resulting mourning took an immeasurable toll on others. But one group of people whose story, until recently, has not been effectively told was the 120,000 Japanese American citizens living on the Pacific Coast who became the object of what the Commission on War-time Relocation and Internment of Civilians called "decisions of race prejudice, war hysteria and a failure of political leadership."

They were forced, by the February 1942 signing of Executive Order 9066 to "relocate" from the designated military areas of the Pacific Coast states and Arizona, to ten camps inland. President Roosevelt's order applied to all Japanese Americans without benefit of trial or hearing, even though 70,000 were American citizens by birth and 40,000 more had lived in this country for more than 25 years. Some were only 1/16 Japanese.

The story of Japanese Internment is a long and complicated situation, but one that is very important to the history of the nation as a democracy and to the Japanese Americans who were dispersed all over America after the war rather than returned to their centrally located homes on the coast. It is also important to the history of Delta, Utah, because one of those "relocation" centers was 17 miles from there.

Topaz, named for the gems in a nearby mountain, or Central Utah Relocation Center, as it was first known, was the fifth largest city in Utah with its peak population of nearly 8,500 citizens. Most of the internees were from the Berkeley, California area near San Francisco. In March of 1942, they were moved from their homes in the lush, green hills to Tanforan Race Track where



they lived in horse stalls and make-shift housing. By September they were transferred to the unfinished barracks of the Topaz camp in a barren desert that wasn't even very appealing to local Deltans used to the bleak terrain.

Now almost 40 years later, the desert near Delta, hasn't healed even though the barracks were moved in 1945. And the people who still live in the town haven't forgotten when trains brought 500 Japanese at a time or the fresh fish market that sprang up then, or some of their friends with names like Yasuda or Kawakami that they still exchange Christmas cards with. Nor have the Japanese Americans forgotten. Some of them returned periodically to the 17,000 acres of desert land with its one square mile of abandoned camp site. They look for remnants of the past and seek solace by telling the story of relocation. Though it was tragic and unhappy, they are proud that most of them faced the trial with courage and dignity befitting the traditions of their people, all the time hoping that by the telling, it may prevent another such tragedy from happening.

As journalism students of Delta High, looking for stories for our school newspaper, the subject of the Topaz Camp was suggested for articles; however, after going to the school library and the public library we were amazed at the lack of information on the camp. That was when we decided to research and record at least the local history of the camp while firsthand stories were still available and make the information acces-

sible to other classes and community organizations.

We went into the community and borrowed pieces of memorabilia that had been made or found at the camp site. This included jewelry made of shells found in the silt that had once been at the bottom of Lake Bonneville, birds delicately carved from wood, a cement casting of a human form, arches and other garden decorations, a hand-carved license plate for an ambulance, all sorts of rocks that had been carried into the camp from distant mountains, and other items.

Then we interviewed people who had some connection to the camp: a civilian guard, a Navy officer who had been fighting in the Pacific before being a fireman at the camp, a realtor who helped secure land and water for the site, a local doctor who practiced at the camp, Herbert B. Maw, the Governor of Utah during World War II, a secretary in the administration building, an educational administrator, and others.

The Japanese American Citizen League donated a video tape about the camp that was produced by a Utah TV station, and we recorded Dr. Leonard Arrington, author of *The Price of Prejudice* and another tape about the literature of the camp.

We re-discovered newspapers and magazines published at Topaz and we xeroxed articles from the local weekly paper for the years of 1942 and '43 and compiled a bibliography of works in libraries in our state that could be acquired through inter-library loans.

We took field trips to the camp and photographed what the camp site looks like today. These were barracks that are now sheds and houses in the community.

We were asked to host the opening session of the International Conference on Redress and Relocation sponsored by the University of Utah. When the conference returned to the Salt Lake campus, we heard Min Yasui speak. His case opposing curfew for Japanese Americans was heard in the Supreme Court. Just this spring he filed a quorum novus for a petition of re-hearing that case.

At that conference we also heard poet Lawson Inada discuss the effect of the camps on the literary history of the Japanese American community. Later he accepted an invitation to teach in our schools for four days.

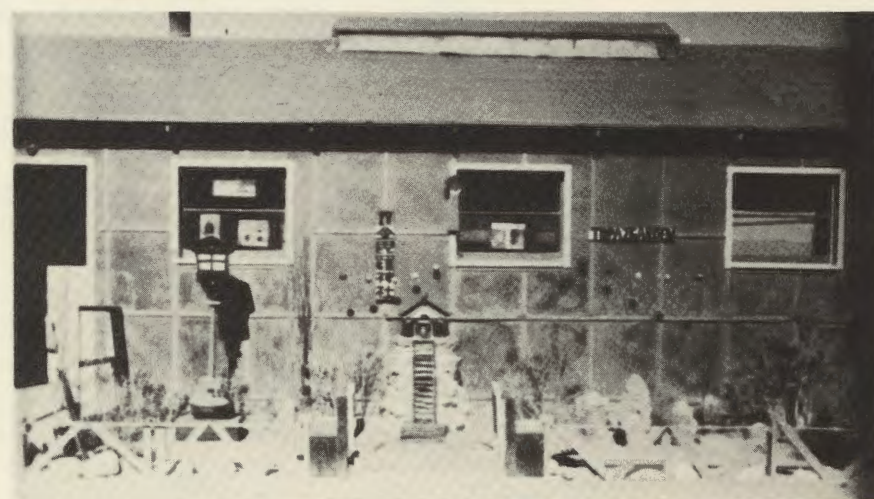
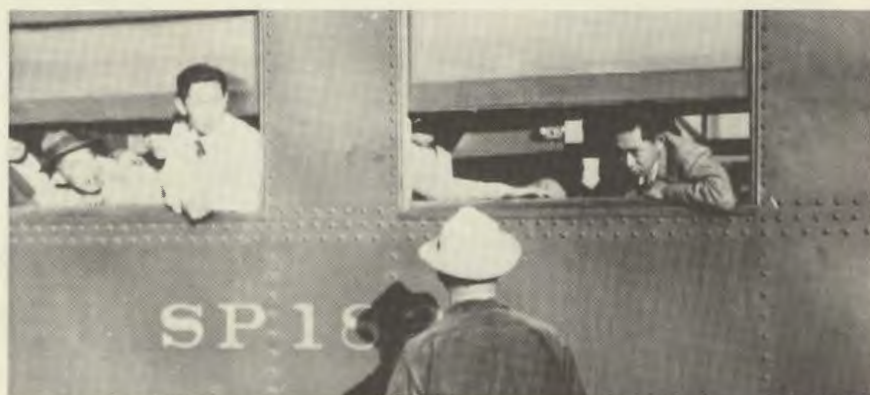
Perhaps the most important production was the school newspaper which was devoted to the subject of internment. The local newspaper editor asked if it could be used as a supplement to her paper and was sent to all of her subscribers.

What was once a subject which only the older generation in our community remembers is now a subject that many know of. We, the younger generation, learned from people with a living memory and now we are telling that story to others.

From our association with members of the Japanese American community, ties between us have developed. People from all over the country have donated materials and written to us telling of experiences in the camp.

Buddhists from Salt Lake City traveled three hours to hold a memorial service at the site. They visited Delta High, even though it was a Sunday, to see our project. Grace Oshita gave a presentation at the camp site telling what it was like to be a high school student there.

Almost 40 years after the camps, the Congressional Commission will reveal its recommendations for redress and reparations of the \$400,000,000 lost by the Japanese Americans in property and personal goods. And our project will go on, because even if a settlement is reached, the issue of internment will not be completely healed, hopefully it will never be forgotten. □



TOPAZ 1942-1946

SITE OF TOPAZ, A WORLD WAR II INTERNMENT CENTER

In the never ending struggle for human dignity, there was enacted on this spot an event of historic significance for a nation and its people.

During World War II

this was the site of an internment camp, complete with barbed wire fence and armed sentries, for 8,000 of the 110,000 Americans of Japanese ancestry, who for no justifiable reason, were uprooted from their homes and interned by their own government. They were the victims of wartime hysteria, racial animosity, and a serious aberration of American jurisprudence.

That a nation dedicated to

the principle of individual freedom and justice through law would, under the stress of war, allow this to happen - and then recognizing the injustice of this action, hastened to soften the effect of this action and make restitution. And that a whole generation of a people, whose life and spirit was shattered and marred, would with courage and hope and perseverance, fight back to re-establish themselves in the American stream of life and were successful - are facts of sufficient historic importance to be remembered forever.

So in this Bicentennial Year 1976,

we dedicate this site as a reminder that the lessons of history need always be heeded in forging a more perfect form of human relationship.

TOPAZ MONUMENT DEDICATED 1976

It reads:

TOPAZ 1942-1946

SITE OF TOPAZ, A WORLD WAR II INTERNMENT CENTER

In the never ending struggle for human dignity, there was enacted on this spot an event of historic significance for a nation and its people.

During World War II

this was the site of an internment camp, complete with barbed wire fence and armed sentries, for 8,000 of the 110,000 Americans of Japanese ancestry, who for no justifiable reason, were uprooted from their homes and interned by their own government. They were the victims of wartime hysteria, racial animosity, and a serious aberration of American jurisprudence.

That a nation dedicated to

the principle of individual freedom and justice through law would, under the stress of war, allow this to happen—and then recognizing the injustice of this action, hastened to soften the effect of this action and make restitution. And that a whole generation of a people, whose life and spirit was shattered and marred, would with courage and hope and perseverance, fight back to re-establish themselves in the American stream of life and were successful— are facts of sufficient historic importance to be remembered forever.

So in this Bicentennial Year 1976,

we dedicate this site as a reminder that the lessons of history need always be heeded in forging a more perfect form of human relationship.

HAVE A BALL AT YOUR REUNION!

Mas Kawaguchi & Ki Tanamachi
Co-chairmen
Topaz Reunion Committee

OUR VERY BEST WISHES
ON YOUR 40th REUNION

Class of '45
Topaz High School

YOSHI NAKAMURA

MASATO NAKAMURA



BEAR SAFETY CENTER

COMPLETE TIRE SERVICE
WHEEL ALIGN - WHEEL BALANCING — BRAKES
COMPLETE TUNE-UP

3031 SAN PABLO AVENUE • OAKLAND, CA • 653-1451

金
鳳
酒
家

GOLDEN PHOENIX

Regional Cuisine of China
Cocktails

728 Washington Street
San Francisco, CA 94108
CHINATOWN
(415) 989-4400

May's COFFEE SHOP

BREAKFAST — LUNCH
UDON — SAIMIN — SANDWICHES — TAIYAKI

1737 POST ST.
SAN FRANCISCO, CA 94115
TEL. 346-4020

MAY MURATA
OWNER

TAIYO-DO RECORD SHOP

Records - Cassette Tapes - 8-Track Tapes
Related Magazines and Books

Japan Center, Kintetsu Bldg.
1737 Post Street, #11-A
San Francisco, CA 94115
(415) 885-2818

MAJOR BRANDS HARRY WONG
REELS - PARTS BLOODWORMS
RED WORMS PILEWORMS
NITE CRAWLERS GRASS &
ANCHOVIES, CLAMS GHOST SHRIMP

EXPERT ROD & REEL REPAIR

WONG'S BAIT & TACKLE SHOP

Nihonmachi Center
1630 Post St., near Laguna St.
San Francisco, CA 94115
Phone: (415) 563-9819



TOSHI MINAMOTO

HOME FURNISHINGS, INC.
259 TENTH STREET
OAKLAND, CALIFORNIA 94607
(415) 444-5177

FURNITURE -
APPLIANCES - CARPETS -
HOME ENTERTAINMENT -
CONTRACT FURNISHINGS -



DAPHNE FUNERALS

one church street, san francisco, ca 94114 415/621-1313
and

ASHLEY & McMULLEN

8th ave. & geary blvd., san francisco, ca 94118 415/751-8403

BEN YOSHIKAWA

TOM HOSHIYAMA, JR.
VICE PRESIDENT & MANAGER

Plaza Insurance Sales, Inc.

701 Montgomery Street • San Francisco 94111
(415) 983-5947

**FORD**

Trucks

Ford
Thunderbird
TempoFutura
Mustang
Escort
EXP**ED CHOVANES FORD, INC.**13889 EAST 14TH STREET
SAN LEANDRO, CALIFORNIA 94578

BUS. (415) 352-2000

**SAM KAWAHARA****GROWERS AND WHOLESALEERS OF BEDDING PLANTS**
16550 ASHLAND AVE., SAN LORENZO, CA 94580, (415) 481-0201**Frank M. Maruoka**
PHOTOGRAPHIC PROCESSING CONSULTANT**REDOX Corporation**
631 Spruce Drive, Sunnyvale, CA 94086
(408) 247-2065**樓酒香杏新**
Sun Hung Heung
RESTAURANT

744 WASHINGTON ST. SAN FRANCISCO, CALIF.

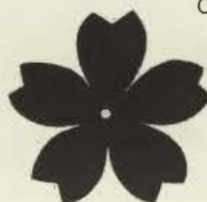
982-2319

CLOSED TUESDAYS

OPEN 11:30 A.M. - 12:00 A.M.

Flowers for All Occasions

CHAMBERLAIN

**MINAMI**
FLOWERS**Janet Minami**21108 Mission Boulevard • Hayward, California 94541
(415) 581-4400chairs
paper goods
jewelry • baskets
cards • soaps
kitchen items
candles • toysetc
etc.etc

an apartment store

1560 haight street, san francisco 94117

863-2994

ARTHUR LEE
AND
WILLARD LEE**東亞餅食公司 EASTERN BAKERY**

720 GRANT AVE. SAN FRANCISCO, CA. 94108 • TEL. 982-5157, 392-4497

GORDON'S
SPORTING GOODS554 CLEMENT STREET
SAN FRANCISCO, CA 94118**387-4008****ZEPHYR CLEANERS**

- Cleaning
- Pressing
- Alterations
- All Clothes Insured

4001 BALBOA STREET
SAN FRANCISCO, CA**221-4669****THE**
ICHIBAN
SHOP

T-SHIRT • GOLF CAP • PLAQUE • TROPHY • STAMP • UNIFORM

featuring:

Your Name in JapaneseJapan Center
22 Peace Plaza, No. 210
San Francisco, CA 94115
Tel. (415) 931-7712



Last Will and Testament

The auspicious class of January, 1944, the second graduating class of Topaz City High School, Topaz, Utah, do hereby declare that the following is their last will and testamanet.

Sachi Adachi wills his sparkling black eyes to Eddie Iwata.

Makiko Endow wills her reliable alarm clock to Frank Sasagawa (no more tardies).

Himeko Enomoto should be willed some executive ability from Sachi Kawahara.

Yosh Fujita wills his ability to play basketball to Ben Dote.

Helen Fukui wills her psychology book to Miss Gerard.

Roy Harano wills his masculine physique to Albert Nabeshima.

Midori Hashimoto leaves her brass knuckles to Yuji Koyama.

Yukio Hayashi leaves his ability to study to Wacky Sumimoto.

Henry Hidekawa leaves his "wolfing" tactics to anyone who is in dire need of it.

Min Hironaka leaves his farming ability to the Topaz city slickers.

Satoko Igarashi wills her sweet, pleasant voice to Sam Nakaso.

Joan Ihara leaves her best seller, "How to Hook a Man," to Miye Yoshimori.

Naomi Inai wills her doodling ability to Mr. Yabuki's art classes.

Patti Iwanaga wills her sleek, slim figure to Chiyo Date.

Tomoe Kanemasu wills her ability to "loose fight" to anyone who can "find fight."

Sekio Kanzaki bequeaths his ability to get along with Mrs. Plummer to anyone who gets her for English.

Tomio "Flash" Katsuura leaves his rocket ship to Kazu "Dale" Nao.

Lillie Kawai wills her shoe ration ticket to Mas Nagamoto.

Ayako Kawamoto wills her athletic ability to Miss Matzkin.

Harry Kitano leaves his skill in getting along with all teachers to Osamu Fujikawa.

Machiko Kimura bequeaths her non-chalance to Ryoza Kumeakawa.

Helen Mori wills her secretarial ability to Motoko Ishiyama.

Miyoko Moritomo leaves her flair for socials to Norman Hirose.

Hiroshi Nagai wills his skill in being in the wrong place at the right time to Hiro Okada.

Fumi Nakabayashi wills her quiet disposition to Masa Takatoshi.

Ken Nihei wills his bewildered look to Mr. Joe Mori.

Michiko Nishikawa leaves her way with men to May Hayashida.

Shun Ochi bequeaths his literary talent to Mrs. Westover's classes.

Min Sagimori wills his future sister-in-law to Mike Mayeda.

Yoshiko Saiki wills her "poker face" to the card sharks.

Nobuo Sasamoto leaves his gold tooth to the scape drive of Millard county.

Grace Sayegusa bequeaths her hobby of collecting men to Tomi Kasai.

Chlyo Sonoda wills her persuasive tongue to Miss Sharvy.

Tsuki Takaha wills her vivacity to Kumi Kariya.

Yosh Takakuwa leaves his scientific knowledge to Leon Westover.

Paul Takata bequeaths a black eye to any bum fooling around with M.T.

Nobuko Takeshita wills her sweat shirt to Mike Mayeda to replace his holey one.

Osamu Tamaki leaves his modesty to Willy Hamada.

Yoshiko Tanaka bequeaths her shyness to Ashi Ashizawa.

Bill Taura leaves his "carrying the torch" ability to Nob Kobayashi.

Stan Tsujisaka leaves his skill at yo-yo to Tak Kubota.

Hanako Tsumura bequeaths her height to Seiko Akahoshi.

Yoshiko Tsurui bequeaths her picture to the soldiers at Camp Shelby.

Lumiko Uchiyama leaves her combination of brains plus beauty to all Topaz coeds.

Yoshie Wada bequeaths her "sacred look" to the wolfesses of Topaz High.

Hideko Yago wills her pearly teeth to anyone waiting for a dental appointment.

Mary Yamanaka wills her garbage jacket to Sus Iwasa.

Kazuo Yoshii leaves his wavy black locks to Tomi Kawamoto.

—From Topaz Rambler, 1944



CURRENT ROSTER OF 1943 GRADUATES

The following names and addresses of the classes of '43 and '44 were obtained through the efforts of the reunion committee. A complete list was impossible. We regret any omissions and misspelled names.

Note: Maiden names are indicated in parenthesis "()".

* Denotes individual attended/registered for class reunion.

ETSUKO AIKAWA (YAMAMOTO)	330 DUTTON AVENUE	SAN LEANDRO, CA 94578
* SEIJI AIZAWA	C/O 500 MIGP APO	SAN FRANCISCO, CA 96343
MINORU AKIYOSHI	817 OAK AVENUE	DAVIS, CA 95616
STANLEY T. AOYAGI	2609 SOMMERSET DRIVE	BELMONT, CA 94002
MARY ARIMOTO (MATSUMOTO)	22849 HARTLAND	CANOGA PARK, CA 91307
* MASAO ASHIZAWA	1698 POST STREET	SAN FRANCISCO, CA 94115
* SACHIKO BARHAM (HONDA)	1845 RIVERS STREET	SAN PABLO, CA 94806
* YOSHIKO DOI (NABETA)	377 BROOKSIDE DRIVE	RICHMOND, CA 94801
NOBORU DOIOKA	237 OLEANDER DRIVE	SAN RAFAEL, CA 94903
* CHIYO ENDO (MATSUZAKI)	2022 46TH AVENUE	SAN FRANCISCO, CA 94116
* MIYOKO ENOMOTO (TANAKA)	740 18TH AVENUE	SAN FRANCISCO, CA 94121
* TERUKO FUJIKAWA (NAKAMIZO)	12530 ADMIRAL AVENUE	LOS ANGELES, CA 90066
NOBUJI FUJIMOTO	1912 FILLMORE STREET	SAN FRANCISCO, CA 94115
MARGARET FUJIMOTO (HAYAMIZU)	C/O 698 GEORGIA AVENUE	SUNNYVALE, CA 94056
SAB FUJITA	101 LU-RAY DRIVE	LOS GATOS, CA 95030
PAUL FUKAMI	RM. 420 ROSITA ROAD	PACIFICA, CA 94044
HENRY FUKUI	14517 NADINE DR	ROCKVILLE, MD 20853
TERUKO FURUTA (ADACHI)	638 35TH AVENUE	SAN FRANCISCO, CA 94121
* GRACE HANDA (MATSUNO)	283 14TH AVENUE	SAN FRANCISCO, CA 94118
* CHIKO HARAMAKI	789 STRATFORD DRIVE	STATE COLLEGE, PA 16801
GEORGE K. HASHIMOTO	7300 SO. HAWTHORNE AVENUE	WOODBRIDGE, IL 60515
AIKO HATAKEDA (FUKADA)	596 PERKINS DRIVE	HAYWARD, CA 94541
JAMES A. HAYASHI	5421 S. CORNELL	CHICAGO, IL 60615
MICHIHIKO HAYASHIDA	2360 MAKIKI HEIGHTS DRIVE	HONOLULU, HI 96822
SATA HIDESHIMA	771 28TH AVENUE	SAN FRANCISCO, CA 94121
YONEKO HIROTA (TAKATA)	P.O. BOX 177	PENRYN, CA 95663
* ELSIE HONDA (MAYEDA)	976 BOYTON AVENUE	SAN JOSE, CA 95117
SUMI HONNAMI	3622 FULTON STREET	SAN FRANCISCO, CA 94118
SHIGEO HOTTA	3345 35TH AVENUE	MINNEAPOLIS, MN 55406
* MICHAEL ICHIMARU	64 EXETER AVENUE	SAN CARLOS, CA 94070
JAMES IDA	4066 BEN LOMOND DRIVE	PALO ALTO, CA 94306
* DAVID T. IINO	12406 GAYLAWOOD DRIVE	HOUSTON, TX 77066
FRANCES IKENAGA (KUSUMINE)	47 ATALAYA TERRACE	SAN FRANCISCO, CA 94117
* TOSH JOE INATOME	2472 MULBERRY SQ. E.	BLOOMFIELD HILLS, MI 48013
JIMMY ISHIDA	42572 FONTAINEBLEAU PK LN	FREMONT, CA 94538
LILY ISHIDA (KATSU)	42572 FONTAINEBLEAU PK LN	FREMONT, CA 94538
YOSHIKAZU ISHIDA	2326 BUENA VISTA AVE	BELMONT, CA 94002
KAZ ITO	BOX 61-486 SPO	SEATTLE, WA 98761
KENNETH IYEKI	236 KNOLL DRIVE	PARK RIDGE, NJ 07656
RHODA IYOYA (NISHIMURA)	1-6, 3 CHOME, NAKAZU CHO	IWAKUNI 740, JAPAN
KIYOKO JEFFCOTT (SUYEYASU)	45-535 LULUKU RD "B"-54	KANEOHOE, HI 96744
* SEIJI KAIBE	22229 17TH PLACE WEST	BOTHELL, WA 98011
* MARY KAIBE (NISHIOKA)	22229 17TH PLACE WEST	BOTHELL, WA 98011
* FRANK T. KAMI	1468 SUMMIT ROAD	BERKELEY, CA 94708
TAKASHI KARIYA	5809 BLUESPRUCE LANE	CINCINNATI, OH 45224
* JEAN KIYO KARIYA (ITO)	477 FT. LEE ROAD	LEONIA, NJ 07605
PETER KASHIMA	923 WOODSIDE ROAD	REDWOOD CITY, CA 94061
KAZUO KATO	2250 CARLETON STREET	BERKELEY, CA 94704
MARIKO KATO (YAMASAKI)	1054 S. BRONSON AVENUE	LOS ANGELES, CA 90019
ALMA KATO (BANDO)	14736 EAST BROADWAY	WHITTIER, CA 90604
SHIGEO KAWABE (HORITA)	1667 34TH AVENUE	SAN FRANCISCO, CA 94122
* MICHIO KAWAGUCHI (HARA)	8192 GRANT DRIVE	HUNTINGTON BEACH, CA 92646
* MASARU KAWAGUCHI	2262 21ST AVENUE	SAN FRANCISCO, CA 94116
* SETSUKO M. KIMURA	882 ATHENS AVENUE	OAKLAND, CA 94607
* SADAOKO FLO KINOSHITA (YOSHIDA)	14 CEDAR GROVE COURT	SACRAMENTO, CA 95831
* JIM KIRIHARA	3019 CAVELL AVE S.	MINNEAPOLIS, MN 55426
* TEIKO KITAGAWA (HIDESHIMA)	152 16TH AVENUE	SAN FRANCISCO, CA 94118
* PETER KITAGAWA	2438 CABRILLO STREET	SAN FRANCISCO, CA 94121
OKI KITAZONO (HASHIMOTO)	5446 VALLES AVENUE	BRONX, NY 10471
MICHIKO KOBİ (OKAMOTO)	224 EAST 48 ST. APT 2D	NEW YORK, NY 10017

RAYKO KOJIMOTO (SEKIGUCHI)	16429 GRAMERCY PLACE	GARDENA, CA 90247
* MASU KOMATSU	757 WALKER AVENUE	OAKLAND, CA 94610
YOSHIRO KONNO	1205 BAYLOR AVENUE	SAN LEANDRO, CA 94579
MIDORI KONNO (MORITA)	1348 HENRY STREET	BERKELEY, CA 94709
* ED KUBOKAWA	2620 BISCAY WAY	WALNUT CREEK, CA 94598
* FLORENCE KUBOTA (SUZUKI)	328 MELROSE ROAD	MILL VALLEY, CA 94943
HIDEO KUBOTA	548 VERDUCCI DRIVE	DALY CITY, CA 94015
* KIYOCHI KUMEKAWA	1835 MORTON AVENUE #701	VANCOUVER, B.C. V6G- -IV3
MARGARET KUSABA (KOIDE)	6 CHICAGO WAY	SAN FRANCISCO, CA 94112
* HAGIKO KUSUNOKI (TERAMOTO)	1738 REDCLIFF STREET	LOS ANGELES, CA 90026
* ANNABELLE LEE (UYEDA)	3816 VICTORIA AVENUE	LOS ANGELES, CA 90008
JAMES S. MACHIDA	3710 SENTER ROAD	SAN JOSE, CA 95111
YAE MARU (SEKIMACHI)	784 KINGSTON AVENUE	PIEDMONT, CA 94611
* EDITH MARUBAYASHI	1121 CYPRESS AVE	SAN MATEO, CA 94401
YEMIKO MARUYAMA	5 COMMODORE DRIVE #302	EMERYVILLE, CA 94608
MIDORI MARUYAMA (TAKAHASHI)	1303 SO. 58TH STREET	RICHMOND, CA 94804
* SUMI MARUYAMA (NAKAHIRO)	33351 SEA BRIGHT DRIVE	DANA POINT, CA 92629
* MICHIKO MASUDA (AIHARA)	2946 NEWARK WAY	SAN JOSE, CA 95124
YUKIKO MASUDA (KIYOMURA)	3072 LANDESS AVE	SAN JOSE, CA 95132
* LILLIAN MATSUDA (KAJIWARA)	642 CARMAR STREET	HAYWARD, CA 94544
FUMIKO T. MATSUOKA (AZUMA)	807 LOGAN CT	SUNNYVALE, CA 94087
* TAKAO MATSUZAKI	35 HILLCREST DRIVE	DUMONT, NJ 07628
TORAICHI MATSUZAKI	24989 HESPERIAN BLVD	HAYWARD, CA 94545
FUMI MC IRVIN (HANYU)	11 IRONHORSE, PO BOX 1025	PORTOLA, CA 96122
JACK MIZUHARA	748 LIBERTY STREET	EL CERRITO, CA 94530
* VINCENT T. MOMII	1619 EAST 86TH PLACE	CHICAGO, IL 60617
* SHINJI MOMONO	684 CARMAR STREET	HAYWARD, CA 94544
JANET MORI (NISHIKI)	1476 164TH AVENUE	SAN LEANDRO, CA 94578
* FRANCES MORIOKA (KIMURA)	778 26TH AVENUE	SAN FRANCISCO, CA 94121
NANCY MORIWAKI (TOJI)	1414 5TH STREET	BERKELEY, CA 94710
* FLORENCE K. MUNENO	2872 MASON LANE	SAN MATEO, CA 94403
TAEKO NAGANO (HONNAMI)	1545 GEARY BLVD #4	SAN FRANCISCO, CA 94115
* HARUYE NAKAGAKI (YOSHIWARA)	2406 36TH AVENUE	SAN FRANCISCO, CA 94116
BUD NOBORI NAKAGAWA	603 ASHBURY AVENUE	EL CERRITO, CA 94530
* MIYOKO NAKAGAWA (SUZAWA)	1460 PEBBLE VALE STREET	MONTEREY PARK, CA 91754
REY NAKAHARA	157 MONTECITO AVENUE #6	OAKLAND, CA 94610
* KAORU NAKAMURA (KAWAHATA)	516 4TH AVENUE	SAN FRANCISCO, CA 94118
* ICHIRO NAKAMURA	166 ESCUELA	MOUNTAIN VIEW, CA 94040
* KAY NAKAMURA (SAKAGUCHI)	2101 28TH AVENUE	SAN FRANCISCO, CA 94116
* HIROSHI JAMES NAKANO	110 HORGAN AVENUE	REDWOOD CITY, CA 94061
CHIYOKO NAKATANI (SUZUKI)	2202 PINE STREET	SAN FRANCISCO, CA 94115
* WILLIAM NARUO	16180 MARCELLA STREET	SAN LEANDRO, CA 94578
ATSUJI NISHIKI	253 FERNANDO	PALO ALTO, CA 94306
MAY NISHIMI (ASHIZAWA)	3225 N. LINCOLN AVENUE	ALTADENA, CA 91001
* MARION YUKIE NISHIMURA	455 SO. CATALINA #17	LOS ANGELES, CA 90020
TOMMY NITTA	2216 S. BENTLEY AVENUE #9	LOS ANGELES, CA 90064
KEN NOBE	1112 KAGANA STREET	PACIFIC PALISADES, CA 90272
EMI OBATA	928 ELGIN STREET	SAN LORENZO, CA 94580
* HANK OBAYASHI	66 INYO PLACE	REDWOOD CITY, CA 94061
* TETS OCHI	1539 18TH AVENUE	SAN FRANCISCO, CA 94122
GEORGE OKU	2608 N. DAYTON	CHICAGO, IL 60614
TEIZO OKUDA	1519 25TH AVENUE	SAN FRANCISCO, CA 94122
* HAYATO ORIKUCHI	2476 MAPLEVIEW LANE	WILLOUGHBY, OH 44094
* MOSES OSHIMA	19347 PARSONS AVENUE	CASTRO VALLEY, CA 94546
* WILLIAM S. OSHIMA	177 TAYLOR STREET	PEMBROKE, MA 02359
GRACE OSHITA (FUJIMOTO)	1024 BLAINE AVENUE	SALT LAKE CITY, UT 84105
* MACHIKO OTA (NAKAMURA)	16 CITADEL COURT	PLEASANT HILL, CA 94523
EOME OTSUKI	866 ELGIN STREET	SAN LORENZO, CA 94580
* KIYOKO OTSUKI (TATE)	5748 VICTORIA LANE	LIVERMORE, CA 94550
* SHIZUO OZAKI	2084 NEW BRUNSWICK DRIVE	SAN MATEO, CA 94402
* WILLIAM T. SAKAI	316 CREEKSIDE DRIVE	PALO ALTO, CA 94306
YOSHIHARA SAKAUYE	1638 NEPTUNE LANE	CLEAR LAKE CITY, TX 77058
* TOMIO SAKURAI	4124 PHOENIX STREET	CONCORD, CA 94521
SACHIYE SASAKI (OTSUKA)	220 WEST LOWELL	TRACY, CA 95376
FUSAYE SUE SASAKI (HIRONO)	1768 CATALPA	CLEVELAND, OH 44112
YORK SATO	2628 MONSERAT AVENUE	BELMONT, CA 94002

MIYOKO SCHUG (ISHIYAMA)	1466 E. PARK PLACE	CHICAGO, IL 60637
EDNA SEKIJIMA (DOWKE)	5363 153RD AVENUE S.E.	BELLEVUE, WA 98006
SHIZ GRACE SERA (KIMURA)	6521 SAULSBURY CT	ARVADA, CO 80003
MITSUYO SHIBA (HANDA)	501 FLORENCE	TURLOCK, CA 95380
MARJORIE SHIGEOKA (NARIKAWA)	1905-A KILAUEA AVENUE	HILO, HI 96720
VINCENT SHIJO	1633 65TH AVENUE	SACRAMENTO, CA 95822
* AYAKO SHIMOMURA (OTA)	12062 BUCKEYE AVENUE	SYLMAR, CA 91342
* KEN SHIMOMURA	12062 BUCKEYE AVENUE	SYLMAR, CA 91342
FUJIKO SHINKAWA (OKUNO)	2204 LADYMUIR CT	SAN JOSE, CA 95131
* MIYE SHINODA	1470 ADDISON STREET	BERKELEY, CA 94702
* MAY SHIOZAWA (HONDA)	P.O. BOX 305	EASTSOUND, WA 98245
LEBO R. SHIOZAWA	510 JEANETTE DRIVE	CLEVELAND, OH 44143
HISAKO SUGAYA (FUJINAMI)	2325 PINE STREET	SAN FRANCISCO, CA 94115
ASAKO SUGITONI (KUSUMI)	16928 RAYMOND PLACE	GARDENA, CA 90247
TSUTOMU SUMIMOTO	1262 PORTLAND AVENUE	ALBANY, CA 94706
* MARY SUTOW	3010 MELENDY DRIVE	SAN CARLOS, CA 94070
MASA SUYEMOTO	219 BALSAM COURT	CINCINNATI, OH 45246
* AIKO SUYEYASU (MATSUMOTO)	878 NORTHHAMPTON DRIVE	PALO ALTO, CA 94303
* MARION SUZUKI (OISHI)	9095 WEST PALM AVENUE	WINTON, CA 95388
KAZUKO TAKAHASHI (HASE)	P.O. BOX 185	LOOMIS, CA 95650
KENICHI TAKAKI	1310 ROSEDALE	CHICAGO, IL 60626
MISAO TAKANO (YOSHIURA)	1721 VIRGINIA STREET	BERKELEY, CA 94703
CHIYOKO TAKETOMO (TSUNO)	1911 W. 154TH PLACE	GARDENA, CA 90249
* FRANK TAKEUCHI	2344 ALVA AVENUE	EL CERRITO, CA 94530
MIYOKO TAKITA	1217 DELAWARE STREET	BERKELEY, CA 94702
* KUNIKO TAMAKI (SUMI)	253 KNOLL DRIVE	PARK RIDGE, NJ 07656
* BETTY IKUKO TAMURA (TODA)	5514 WEST GRACE STREET	CHICAGO, IL 60641
MASAMICHI TAN	5436 FRESNO AVENUE	RICHMOND, CA 94804
* SHIZUE TANABE (MORITOMO)	15554 TRACY STREET	SAN LORENZO, CA 94580
TOSHIKO TANAKA (SUZUKI)	76-247 DELMAR WAY	SAN MATEO, CA 94403
* PAUL Y. TANI	177 THUNDER LAKE ROAD	WILTON, CT 06897
MARY TANIGUCHI (MATSUI)	2106 21ST AVENUE	SAN FRANCISCO, CA 94116
* REV. JAMES Y. TODA	15862 CORTE GERALDO	SAN LORENZO, CA 94580
* TOM TOMIOKA	220 FUNSTON AVENUE	SAN FRANCISCO, CA 94118
GEORGE TSUDA	901 KENTER WAY	LOS ANGELES, CA 90049
* DR. HIMEO TSUMORI	245 29TH AVENUE	SAN FRANCISCO, CA 94121
YAEKO TSUMURA	431 18TH AVENUE	SAN FRANCISCO, CA 94121
PATSY UCHIMURA (NAKAMURA)	P.O. BOX 226	KEALEKEKUA, HI 96750
MARY UCHIYAMA (KAWAGUCHI)	1660 MAR VISTA	PASADENA, CA 91104
* KAY USHIJIMA (TATSUGUCHI)	2692 LAKEVIEW DRIVE	SAN LEANDRO, CA 94577
HISASHI WATANABE	2315 CALIFORNIA STREET	BERKELEY, CA 94703
MICHIKO YAMADA	220 S. IDAHO ST. APT 1	SAN MATEO, CA 94401
* GEORGE YAMAMURA	834 MASONIC AVENUE	SAN FRANCISCO, CA 94117
GEORGE YAMASHIRO	831 EUCLID AVENUE	BERKELEY, CA 94708
* MOTOICHI YANAGI	1540 BOCKMAN ROAD	SAN LORENZO, CA 94580
* MAKO YOSHIDA	4718 SARA DRIVE	TORRANCE, CA 90503
MIDORI YOSHIMURA (NAKAGAWA)	17534 PURCHE AVE	TORRANCE, CA 90504
* TOM YOSHITOMI	573 17TH AVENUE	SAN FRANCISCO, CA 94118

CURRENT ROSTER OF 1944 GRADUATES

SUMI ADACHI (YUI)	1621 WOLFE DRIVE	SAN MATEO, CA 94402
ELMER SACHI ADACHI	20431 CUNNINGHAM	SARATOGA, CA 95070
AKIRA ASAI	10075 LA PAZ AVENUE	SAN RAMON, CA 94583
KAY CHOW (MUROTA)	40 MINOCA CT	PORTOLA VALLEY, CA 94025
* TOYOKO FUJII (TSUGAWA)	2225 BABETTE WAY	SACRAMENTO, CA 95832
* SAM FUJIKAWA	12530 ADMIRAL AVENUE	LOS ANGELES, CA 90066
* STEVE FUJIOKA	922 ENSENADA AVENUE	BERKELEY, CA 94707
* RICHARD YOSH FUJITA	3548 W - 129TH	CLEVELAND, OH 44111
SALLY FUKUHARA	4860 SO. INCA ST	ENGLEWOOD, CO 80110
* CHIYO FUTAGAKI (SONODA)	1830 BENEDICT DRIVE	SAN LEANDRO, CA 94577
PAT SAWAE GARDNER (KUWANO)	23047 IDA LANE	HAYWARD, CA 94541
GEORGE HAMADA	1767 W. NORTH SHORE	CHICAGO, IL 60626
JOHN HANAMOTO	RT. 2, BOX 544	MORGAN HILL, CA 95037
* ROY HARANO	720 WEST F STREET	NORTH PLATTE, NE 69101
* DR. BOB HATA	7601 POTRERO	EL CERRITO, CA 94530

* FRED HAYASHI	6914 HIGH ROAD	DARIEN, IL 60559
* FUMI HAYASHI (MANABE)	1629 JAYNES STREET	BERKELEY, CA 94703
YUKIO HAYASHI	440 4TH AVENUE	SAN FRANCISCO, CA 94118
* HENRY HIDEKAWA	1479 27TH AVENUE	SAN FRANCISCO, CA 94122
MINORU HIRONAKA	931 HAROLD AVENUE	MOSCOW, ID 83843
NORMAN HIROSE	2433 VALLEY STREET	BERKELEY, CA 94702
* HARRY HIRUO	2370 GILLPORT LANE	WALNUT CREEK, CA 94598
GRACE HORITA (SAYEGUSA)	271 SCHOOL LANE	NORRISTOWN, PA 19403
MAE HORIUCHI (TSUCHIDA)	1336 EAST WORKMAN	WEST COVINA, CA 91790
* YURI ICHIMARU (NAKATANI)	64 EXETER AVENUE	SAN CARLOS, CA 94070
KAORU IHARA (MORITA)	5311 MACDONALD	EL CERRITO, CA 94530
* TOM IMAGAWA	1717 HILLMAN AVENUE	BELMONT, CA 94002
MICHIKO INOUYE (NISHIKAWA)	16024 VIA DEL SOL	SAN LORENZO, CA 94580
KAY IRIKI	1401 BLAKE STREET	BERKELEY, CA 94702
* SODIE ISHIDA	508 EDGEMAR AVENUE	PACIFICA, CA 94044
MIN ISHIDA	13889 E. 14TH ST.	SAN LEANDRO, CA 94578
* PAULINE AKIKO ISHII (NAKAMURA)	98-1209 KAAMILO STREET	AIEA, OAHU, HI 96701
JOE ISHIZAKI	55 25TH AVENUE	SAN FRANCISCO, CA 94121
* PETE ITO	493 BOYNTON AVE	BERKELEY, CA 94707
* YONE ITO (KATO)	567 CARMAR STREET	HAYWARD, CA 94544
YOSHIKO MAE ITO (TSURUTA)	1180 BRANHAM STREET	MONTEREY PARK, CA 91754
JOE IWATA	1437 FRUITRIDGE ROAD	SACRAMENTO, CA 95822
MAY IYEKI (HAYASHIDA)	236 KNOLL DRIVE	PARK RIDGE, NJ 07656
* PAUL KAGEYAMA	566 TREESIDE DR	AKRON, OH 44313
* MIDORI KAMEI (HASHIMOTO)	1302 CROWN DRIVE	ALAMEDA, CA 94501
SUMAKO KANEDA (AIHARA)	RTE 1 WHITEHEAD RD	NORRISTOWN, PA 19401
SEKIO MILTON KANZAKI	200 DUPPS AVENUE	PUEBLO, CO 81005
* NATALIE KATAYANAGI (NAKAMURA)	250 16TH STREET	RICHMOND, CA 94801
TOSHIE KATO (HAMASAKI)	43 NORTHAM AVE	SAN CARLOS, CA 94070
* TOMIO KATSURA	6732 PINO REAL	EL PASO, TX 79912
* MAE KAWAGUCHI (FURUZAWA)	790 CASCADE DR	SUNNYVALE, CA 94087
* ADA KAWAMOTO (NAKAGIRI)	271 AMBER DRIVE	SAN FRANCISCO, CA 94131
JIM KAWAMURA	9841 FARM LANE	SACRAMENTO, CA 95827
TONY KIMURA	3933 N CLARENDON	CHICAGO, IL 60613
JUNKO KIMURA (MAIDA)	2732 CARDIFF CT	RICHMOND, CA 94806
MACHIKO KIMURA	7277 FARMDALE WAY	SACRAMENTO, CA 95831
* TEE TOMOE KINOSHITA (KANEMASU)	1385 LAS LOMITAS CIRCLE	SACRAMENTO, CA 95831
AIMEE KISHI (NOMURA)	S 5701 OLD LAKE SHORE RD	LAKEVIEW, NY 14085
* HARRY KITANO	1230 N. HORN AVENUE #415	LOS ANGELES, CA 90069
MITSUE KIUHARA (HAMASAKI)	3654 REDMAPLE ROAD	SALT LAKE CITY, UT 84106
YUJI KOYAMA	2237 HURLEY WAY 114	SACRAMENTO, CA 95825
SHIZUE KUBOCHI (HIGUCHI)	7415 MOONCREST WAY	SACRAMENTO, CA 95831
TAK KUBOTA	105 FARALLON DRIVE	VALLEJO, CA 94590
AYAKO KURAKAZU (KAWAMOTO)	614 KAINS AVENUE	ALBANY, CA 94706
TSURUKO KUWAMOTO	16356 ASHLAND AVE	SAN LORENZO, CA 94580
ISAMI MATSUHARA	1764 PESCADERO DRIVE	SALINAS, CA 93906
MASAYOSHI MATSUI	9314 OTIS STREET	SOUTH GATE, CA 90280
SACHIYE MATSUMOTO (FUJII)	306 BRIGGS ST	NOGALES, AZ 85621
MIKE MAYEDA	2324 FACTORY	KALAMAZOO, MI 49001
* KATHERINE MIHO	1575 SPRING STREET	MOUNTAIN VIEW, CA 94043
ROSE MIYAHARA (ADACHI)	9300 SOMERSET DRIVE	OVERLAND PARK, KS 66207
* BETTY MIYAKE (NAKASO)	11936 S. WEST AVENUE	CARUTHERS, CA 93609
* TOMIKO MIYAOKA (HASE)	15075 OAKHILLS DRIVE	SALINAS, CA 93907
MINORU MIYASAKI	5626 BAYVIEW AVENUE	RICHMOND, CA 94804
DAN MIZUHARA	880 HILLSIDE AVENUE	ALBANY, CA 94706
* HOWARD MIZUHARA	135 STONEHEDGE ROAD	HILLSBOROUGH, CA 94010
* JIM MORIKAWA	13506 ELBUR LANE	LAKEWOOD, OH 44107
WILLIAM MOROZUMI	251 15TH AVENUE	SAN FRANCISCO, CA 94118
* GEORGE MURAKAMI	965 OAKLEY STREET	SALT LAKE CITY UT 84116
* IAN ALBERT NABESHIMA	7325 CHABOT ROAD	OAKLAND, CA 94618
* ROBERT I NAGATA	1660 11TH AVENUE	SAN FRANCISCO, CA 94122
FUMIKO NAKABAYASHI	1438 W. BALMORAL	CHICAGO, IL 60640
MITS NAKAGAWA	603 ASHBURY AVENUE	EL CERRITO, CA 94530
IKE NAKAMURA	2602 QUIET PLACE DRIVE	WALNUT CREEK, CA 94598
* YOSHIKO NAMBA (TANAKA)	45 GRAFTON AVENUE	SAN FRANCISCO, CA 94112
MOTOKO NARITAKU (ISHIYAMA)	347 BROOKSIDE DRIVE	WILMETTE, IL 60091
HIME NICHOLS (ENOMOTO)	109 CLIPPER LANE	MARTINEZ, CA 94553

* KEN NIHEI	1326 33RD AVENUE	SAN FRANCISCO, CA 94122
RAYMOND NOMURA	2769 MUIR WAY	SACRAMENTO, CA 95818
* SHUN OCHI	754 23RD AVENUE	SAN FRANCISCO, CA 94121
* MAS OISHI	1479 SPRING BROOK ROAD	WALNUT CREEK, CA 94596
* NOBUKO OKABAYASHI (OKAMURA)	P.O. BOX 1022	REDWOOD CITY, CA 94064
* MARY OKADA (IGARASHI)	618 FUNSTON AVENUE	SAN FRANCISCO, CA 94118
* KAYOKO OKUBO (TSUYUMINE)	1623 SPRING STREET	MOUNTAIN VIEW, CA 94043
CHIYEKO ONO	6427 GEARY BLVD	SAN FRANCISCO, CA 94121
* MIYOKO ONODA (MORITOMO)	15403 S. MANHATTAN PLACE	GARDENA, CA 90249
* ALICE OSHIMA (IWAKI)	154 PALOMA AVE	SAN FRANCISCO, CA 94127
* NAMIYE JOAN OSHIMA (IHARA)	4829 XERXES AVENUE S.	MINNEAPOLIS, MN 55410
* KOJI OZAWA	3008 PINE STREET	SAN FRANCISCO, CA 94115
* TAMAKI PETERSON (TSUBOKURA)	235 UPLAND DRIVE	SAN FRANCISCO, CA 94127
* JUDY TSUKI PETERSON (TAKAHA)	27602 C.O. ROAD 388	KERSEY, CO 80644
MIN SAGIMORI	498 MILL POND DRIVE	SAN JOSE, CA 95125
YOSHIKO SAIKI	320 "A" STREET	COLMA, CA 94014
BARBARA SAKUYAMA	767 30TH AVENUE	SAN FRANCISCO, CA 94121
* HARLAN H. SANO	5076 GOLDEN DRIVE	SAN JOSE, CA 95129
NOBUO SASAMOTO	2335 W. FOSTER	CHICAGO, IL 60626
* STAN SATO	6315 FORDHAM WAY	SACRAMENTO, CA 95831
* AMY SHIMAMOTO (HOSODA)	3537 CLEMENT STREET	SAN FRANCISCO, CA 94121
KAY STOCKSDATE (SEKIMACHI)	2147 OREGON STREET	BERKELEY, CA 94704
YO SUMIMOTO (IKEDA)	1262 PORTLAND AVENUE	ALBANY, CA 94706
NAOMI TAJIRI (IMAI)	P.O. BOX 820	REEDLEY, CA 93654
* YOSH TAKAKUWA	30 POPPY LANE	BERKELEY, CA 94708
* SHOGI TAKATA	2323 OREGON STREET	BERKELEY, CA 94705
* JACKY SHIGEO TAKAYANAGI (SUZAWA)	1530 COMSTOCK COURT	BERKELEY, CA 94703
SHUJI TAKEI	630 SILVER ROCK LANE	BUFFALO GROVE, IL 60090
* SACHIYE TAKEOKA (DOWKE)	1338 33RD AVE	SAN FRANCISCO, CA 94122
BETTY TAKESHITA	1737 GROVE STREET	SAN FRANCISCO, CA 94117
* HIDEO TAKETA	1487 S. 6TH E STREET	SALT LAKE CITY UT 84105
MASA TAKETOSHI	7537 N. KASTNER	SKOKIE, IL 60076
* OSSIE TAMAKI	3409 RIDGEMONT DRIVE	MOUNTAIN VIEW, CA 94040
JOE TAMAKI	1139 ADDISON #1	BERKELEY, CA 94702
LILY TAMURA	1221 V STREET	SACRAMENTO, CA 95818
* KAZUKO TANABE (NOSE)	1102 WILMINGTON AVENUE	SAN JOSE, CA 95129
BEISHI TANABE	4127 FOLSOM STREET	LOS ANGELES, CA 90063
* KI TANAMACHI	1825 VIRGINIA STREET	BERKELEY, CA 94703
ETS TANIGUCHI (HONNAMI)	2818 WOOLRIDGE AVENUE	AUSTIN TX 78705
BILL MAS TAURA	726 W. OAKDALE AVENUE	CHICAGO, IL 60657
MARY TESHIMA (YAMANAKA)	8 LOS BANOS COURT	WALNUT CREEK, CA 94598
MIYOKO TOMURA (SAKURAI)	2114 48TH AVENUE	SAN FRANCISCO, CA 94116
MAKIKO TOYAMA (ENDOW)	1308 BRANWOOD WAY	SACRAMENTO, CA 95831
* MARGARET TSUJIMOTO (TAKEUCHI)	381 CRESTMONT DRIVE	OAKLAND, CA 94619
* STAN TSUJISAKA	133 COOK STREET APT 3	SAN FRANCISCO, CA 94118
* LUMIKO TSUMORI (UCHIYAMA)	245 29TH AVENUE	SAN FRANCISCO, CA 94121
HANAKO TSUMURA	431 18TH AVENUE	SAN FRANCISCO, CA 94121
* LILLIE URASAKI (KAWAI)	5725 BOWESFIELD STREET	LOS ANGELES, CA 90016
* HELEN USHIJIMA (MORI)	407 RIDGEGATE ROAD	ORINDA, CA 94563
RUTH WADA (NAKAGAWA)	351 SAN ANTONIO	SAN MATEO, CA 94401
* YOSHIE WADA	1808 MENDOCINO	RICHMOND, CA 94804
MILTON WAKAYAMA	724 BALRA	EL CERRITO, CA 94530
* MAE WATANABE (HIKIDO)	2645 W. HOWARD STREET	CHICAGO, IL 60645
YOSH YAMADA	500 E. 33RD	CHICAGO, IL 60616
ALICE YAMANE (NEMOTO)	97 ORMONT ROAD	CHATHAM, NJ 07923
* TOM YAMANE	780 SANTA RITA AVENUE	LOS ALTOS, CA 94022
MICHIKO BARBARA YAMASHITA	5637 JACKSON LANE	SACRAMENTO, CA 95822
DAVE YAMATE	1619 LYON STREET	SAN FRANCISCO, CA 94115
* SHICHIRO YOKOMIZO	25649 BARNARD STREET	HAYWARD, CA 94545
* MIYUKI YOSHIDA (HANANOUCHE)	13765 HARDING ROAD	TURLOCK, CA 95380
* MAC YOSHIDA	732 ARGUELLO BLVD	SAN FRANCISCO, CA 94118
* KAZ YOSHII	532 SEA VIEW DRIVE	EL CERRITO, CA 94530
SABURO YOSHIKAWA	2094 LAMBERTON ROAD	CLEVELAND HTS., OH 44118
* SHIG YOSHIMINE	5121 COWELL BLVD	DAVIS, CA 95616
JACK YOSHIKAWA	918 LINVALE COURT	SACRAMENTO, CA 95822
MARY ZECK (TSUDA)	2780 S. 64TH STREET	MILWAUKEE, WI 53219



三寶

日本料理

SANPPPO RESTAURANT

1702 POST STREET
SAN FRANCISCO, CALIFORNIA 94115
Phone: 346-3486



M. YOKOTA NURSERY, INC.
WHOLESALE CUT ROSES

MASAO YOKOTA
President

467 Marina Blvd. • San Leandro, CA 94577 • (415) 352-0973

TELEPHONE 781-7437

DR. ALFRED T. LEE
DR. MICHAEL L. LEE
OPTOMETRISTS

OPTOMETRIC
CORP.

748 SACRAMENTO ST.
SAN FRANCISCO, CALIF. 94108



1790 SUTTER ST., SAN FRANCISCO, PHONE 931-8165

FOOD SUPPLEMENTS
RAW DAIRY PRODS.
FRESH PRODUCE
DRIED FRUITS

HERBS
HONEY
NUTS
GRAINS

THOM'S NATURAL FOODS

SK 2-2371

843 Clement Street
San Francisco 94118



CASTRO CITY MARKET

40 SOUTH RENGSTORFF
MOUNTAIN VIEW, CA 94040

ICH NAKAMURA
(415) 967-3630



BAR & GRILL

951 Clement Street, at 11th. Ave.
San Francisco, CA. 94118

Phone: 752-5927
752-8900

11:00 am. to 2:00am.

HENRY S. KOMIYA
MARY K. KOMIYA

(415) 931-0477



小宮時計店
Komiya's Jewelers

SEIKO WATCHES, SALES AND REPAIR

JAPAN CENTER #11-B
1737 POST STREET

SAN FRANCISCO, CA 94115



UOKI

ORIENTAL FOODS SINCE 1906

K. SAKAI COMPANY
921-0514 1656 POST STREET
SAN FRANCISCO, CALIFORNIA

SONYA HVEEM JOHNSON, M.S.

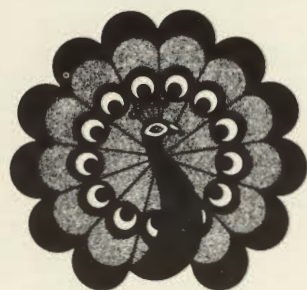
Crisis Counseling

(415) 479-9757

100 Marin Center Drive, 27
San Rafael, CA 94903

Acknowledgements

San Francisco Federal Savings & Loan
Bank of America
Takara Sake USA Inc.
Nisei Plastics
Nakamura Restaurant, Pier 39
Yonemura & Yasaki Law Offices
Yamabiko Hour KEST Radio Mainichi Crisco Inc.
Class of '45
Jane Beckwith, Delta, Utah
Col. Eugene D. Hawkins, Infantry U.S. Army
JFC Corp.
Mt. Eden Nursery, Eric Shibata
Sunnyside Nursery
Jean Kiyo (Ito) Kariya, Leonia, NJ
Rose (Adachi) Miyahara, Overland Park, KS
Thomas R. Bodine, England
Barbara Michiko Yamashita, Sacramento, CA
Tony Kimura, Chicago, IL
Sumitomo Bank
California First Bank
Federal Records Center National Archives, GSA
Yamato Sukiyaki House
Kokusai Theatre
George Ushijima
Parris Farzar
Chiyo (Date) Iino, pianist
Dave Tatsuno
Mas Hongo
Yas Furuya
Mike Ichimaru
Yone Satoda
Frank Maruoka
Dr. John Hada
Bong Mo Yeun
Yone (Kato) Ito



Best Wishes for the long-awaited reunion.

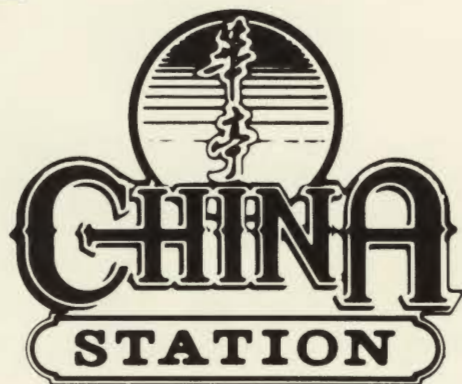
Exhibits of California, Inc.

1140 Hamilton Court, Menlo Park, CA 94025
415/327-3330

Mike Y. Ichimaru, President

Remembering Topaz and the Classes of 1943 & 1944

*May the good memories, the fulfillment
from challenges met, and the
sharing of happy moments at this reunion
rekindle warmer friendships in the years ahead.*



**700 University, Berkeley
548-7880**

**Reservations
Recommended**

**Free parking. Air conditioned.
Smoking permitted.**



A unique Chinese Restaurant
located in the historic
Southern Pacific railroad depot.

**Featuring an extensive
Cantonese menu:**

Lunch, Dinner, Late Supper,
Banquets, Food to Go
daily from 11:30am to 1am
and Cocktails 'til 2am.

"Jook" also served after 10pm.

Gift Certificates Available



Rec'd from
Marion Kanamoto.
Nov 2002

