

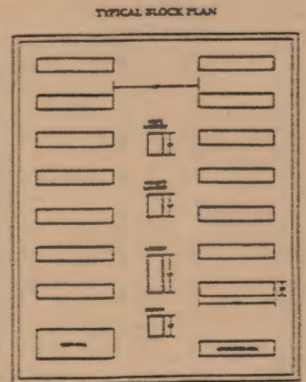
WESTERN DEFENSE COMMAND AND FOURTH ARMY
WARTIME CIVIL CONTROL ADMINISTRATION
Pamphlet of San Francisco, California
May 3, 1943

INSTRUCTIONS TO ALL PERSONS OF JAPANESE ANCESTRY

Living in the Following Area:

Persons in the continental United States, Alaska, and Hawaii, who are citizens of the United States, and who are of Japanese ancestry, are required to register with the War Relocation Authority (WRA) and to report to the nearest War Relocation Authority office for assignment to a War Relocation Center. This assignment is based on the individual's age, sex, marital status, and other factors. The War Relocation Authority is authorized to require the registration and reporting of persons of Japanese ancestry in the continental United States, Alaska, and Hawaii, who are citizens of the United States, and who are of Japanese ancestry, to the War Relocation Authority for assignment to a War Relocation Center. This assignment is based on the individual's age, sex, marital status, and other factors. The War Relocation Authority is authorized to require the registration and reporting of persons of Japanese ancestry in the continental United States, Alaska, and Hawaii, who are citizens of the United States, and who are of Japanese ancestry, to the War Relocation Authority for assignment to a War Relocation Center. This assignment is based on the individual's age, sex, marital status, and other factors.

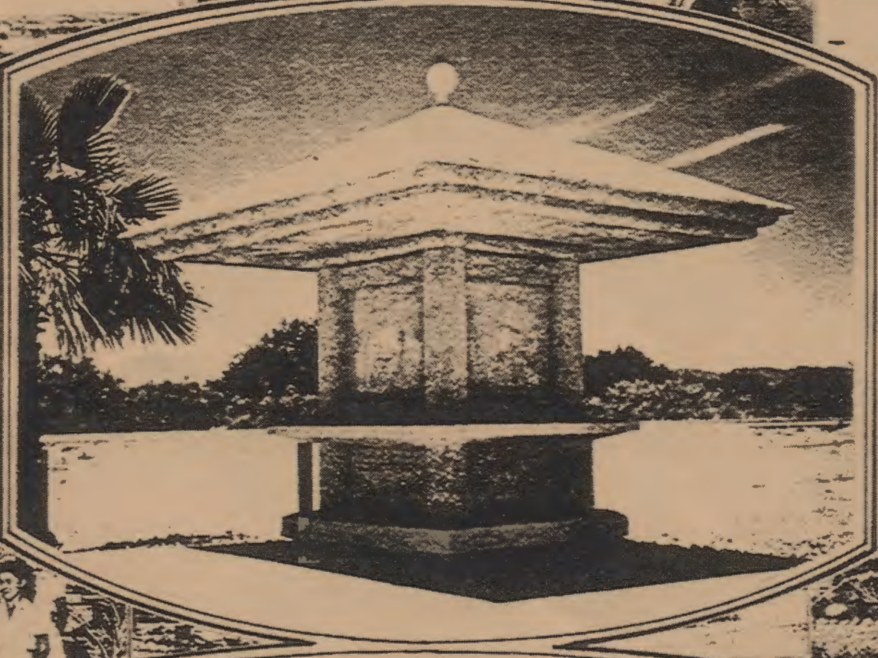
War Relocation Centers for
Japanese Americans during WW II



COLORADO RIVER WAR RELOCATION CENTER

POSTON

CAMP-I ☆ CAMP-II ☆ CAMP-III
MAY 8, 1942 - NOV. 28, 1945



Memorial KIOSK DEDICATION

TUESDAY, NOVEMBER 7, 1995
POSTON, ARIZONA

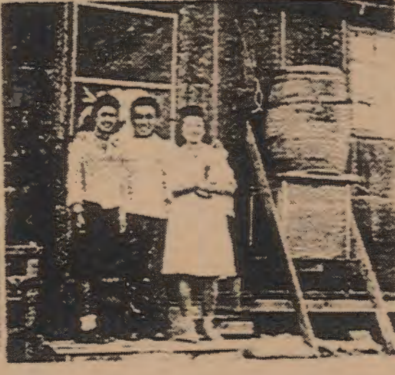


The *Poston Chronicle*
POSTON • ARIZONA

Vol XIII Vol 7 Thursday, June 10, 1943

UNEMPLOYMENT COMPENSATION GIVEN

Unemployment compensation is authorized only for those workers involuntarily unemployed due to illness occurring while engaged in work at the center. WTA Director Dilson S. Myer pointed out, "There are now more than sufficient employment opportunities outside the relo-



OFFICIAL PROGRAM

POSTON MEMORIAL MONUMENT

KIOSK DEDICATION

11:00 A.M., TUESDAY
NOVEMBER 7, 1995

POSTON, ARIZONA

OFFICIAL PROGRAM

POSTON MEMORIAL MOUNTAIN

POSTON MEMORIAL MOUNTAIN

DEDICATED TO

THE

25 SERVICEMEN

POSTON, ARIZONA

**BRIEF LIFE HISTORIES
OF THE 25 POSTON SERVICEMEN WHO GAVE THEIR LIVES
IN SERVICE TO THEIR COUNTRY**

1. **HIROO ENDO**, *Private First Class*, was born on January 4, 1921, in the farming community of Downey, California, and inducted into the US Army on July 26, 1943. He served with the 442nd Regimental Combat Team until he was killed in action on April 8, 1945, at the age of 25. He was awarded the Purple Heart Medal posthumously.
2. **ABE M. FUJI**, *Staff Sergeant*, served with the 442nd Regimental Combat Team in France where he was killed in action on October 5, 1944. He was raised in the Salinas area and was studying at Hastings Law School before induction. He was awarded the Silver Star and Purple Heart medals.
3. **CHARLES FUJIKI**, *Private First Class*, was a member of the 442nd Regimental Combat Team and was killed in an accident while serving in Italy. His family spent time in Poston, Camp II, and relocated to Seabrook, New Jersey.
4. **TADAO HAYASHI**, *Private First Class*, was raised on a farm in the Salinas area. He served with the 442nd Regimental Combat Team, Company I. He was killed in action on April 25, 1945, during the Po Valley Campaign in Italy. He was awarded the Purple Heart and the Combat Infantryman's Badge. "His letters to his mother (in English) portrays the depth of his character, maturity and love for the beauty and art in spite of the horrors of war," his sister writes.
5. **TORAO HAYASHI**, *Private First Class*, was inducted into the US Army in January 1941 and was assigned to the 100th Battalion, Company B. He was killed in action on October 28, 1944, at the age of 30, during the rescue of the "Lost Battalion" of the 36th Texas Division in France. He was born on January 25, 1914 and farmed in the Sacramento area. He was described by his family as a "caring and compassionate" person.
6. **PAUL HORIUCHI**, *Private First Class*, served with the 442nd Regimental Combat Team, Co. E. He was one of the original volunteers from Poston. He was killed in action on October 19, 1944 in France, at the age of 22. He was born on August 24, 1922 in Salinas, California, where he and his family raised strawberries until the time of evacuation.
7. **EUGENE INOUYE**, *Private*, was inducted on April 9, 1945, shortly after he left Poston Camp I, to work in Chicago. Before reporting to Fort Douglas, Utah, he traveled to San Dimas, California, to visit his father and fell ill during this time and died on June 22, 1945, while the rest of the family was enroute home from Poston.

8. **HENRY IZUMIZAKI**, *Private First Class*, was one of the first group of volunteers from Poston. He joined the 442nd Regimental Combat Team, Company F and was killed in action on November 2, 1945, during the rescue of the "Lost Battalion" in France. He was born in March 1920 in Watsonville, California. He was very good at building and repairing things so his family felt that he probably would have gone into the carpentry or mechanic fields.
9. **HARRY MADOKORO**, *Private First Class*, served with the 442nd Regimental Combat Team, Company F. He was killed in action on July 1944 during the Battle of Luciana in Italy. Brigadier General Wilson awarded the Distinguished Service Cross, posthumously to PFC Madokoro. His mother accepted the medal which is the second highest to be offered by the United States Army. Before his induction in 1943, he served as Police Chief of Poston Camp II. He was an only child, and was survived by his widowed mother, Mrs. Matsu Madokoro of Watsonville, California.
10. **TIMOTHY I. MIZOKAMI**, *Staff Sergeant*, served with the 442nd Regimental Combat Team, Company M. He was killed in action on November 4, 1944, during the rescue of the "Lost Battalion" in France. Timothy was born on February 14, 1919, in Monterey, California, and died at the age of 25. His postwar plans were to raise cattle with his brother in Wyoming.
11. **HACHIRO MUKAI**, *Private First Class*, served with the 442nd Regimental Combat Team, Company F. He was killed in action on October 22, 1944, near Bruyeres, France. He was awarded posthumously the Purple Heart and the Combat Infantryman's Badge. Other medals included the Distinguished Unit Badge, European African Middle Eastern medal, Campaign Ribbon (one battle star). Hachiro was born near San Jose, California, on the family farm. He excelled in high school and had planned on attending college after the war.
12. **FUMITAKE NAGATO**, *Private First Class*, was born on August 2, 1918, in Los Angeles and grew up in the farming community of Imperial Valley. He was drafted before the Evacuation in 1941, and fought with the 442nd Regimental Combat Team. On October 10, 1944, he was killed during the rescue of the "Lost Battalion" of the Texas 36th Division, at the age of 26. His medals include the Bronze Star, Distinguished Unit Citation, Combat Infantryman's Badge and Purple Heart. Fumitake's deepest wish was to return home and care for his parents and family. He was buried at Arlington National Cemetery with full military honors.
13. **JOHN NARIMATSU**, *Corporal*, was killed in action on November 1, 1944, during the rescue of the "Lost Battalion" in France. He was inducted from Dinuba, California in February 1941, where he was born. In the words of his sister, "he was outgoing, friendly and loved to talk." He was a member of the 442nd Regimental Combat Team, Co. L

14. **TOM T. NISHIMOTO**, *Private*, was a member of the 442nd Regimental Combat Team, Co. L, and was killed in action on April 5, 1945, during the Mt. Folgorito-Po Valley Campaign in Italy. He received basic training as a rifleman. Born in Los Angeles, he attended schools in El Centro, California. Early in Tom's youth, he displayed avid interest in the construction of model airplanes and photography. He envisioned that his vocation would be in photography and he pursued it vigorously, although his cameras, darkroom accessories and equipment were confiscated by the government. He had planned early on that when his tour of duty was completed, he would enter photography school. He received the Purple Heart, Combat Infantryman's Badge and the Bronze Star for his service to his country.
15. **KONGO NITTA**, *Private*, came from rural Watsonville, California, where he was born on May 13, 1922. He was inducted in March 1945 and was killed accidentally during basic training at Camp Maxey, Texas.
16. **JOHN OGAWA**, *Sergeant*, 442nd Regimental Combat Team, Co I, died in action April 21, 1945, near San Terenzo in Northwestern Italy. He was born in Garden Grove, California, and was a farmer at the time of induction on December 1, 1941. He trained at Ft. Riley, Kansas, as well as at Camp Shelby. He was awarded the Purple Heart, posthumously, and two Presidential Citations. His brothers, Wilson and Kenneth, served with the 442nd and MIS, respectively
17. **ABRAHAM OHAMA**, *Technical Sergeant*, was inducted on February 23, 1941, from Los Angeles, California, and served with the 442nd Regimental Combat Team, Company F. He believed strongly that the nisei soldiers' record on the battlefield would determine our release from camps and our future acceptance in America. He was killed in action in Bruyeres, France, on October 24, 1944, while attempting to save a comrade for which he was awarded the Silver Star.
18. **LLOYD ONOYE**, *Private First Class*, 442nd Regimental Combat Team, Co. I, died in action on April 21, 1945 in Italy, at the age of 24. Born on September 1921 in Salinas, California, he planned to attend college when he was discharged. His sister writes, "Lloyd was anxious to help our country win the war and felt by volunteering for the 442nd was the best thing he could do."
19. **ATSUSHI SAKAMOTO**, *Technical Sergeant*, was born on October 5, 1916, and grew up in San Pedro, California. He was inducted into the service in 1942 and assigned to the 442nd Regimental Combat Team, Co. K, and was killed in action on July 17, 1944 in Livorno-Luciana area in Italy, at the age of 28. He was honored posthumously with the Silver Star Medal and Purple Heart. His brother writes that he was a fun-loving person.

20. **JOE SHIOMICHI**, *Private*, from a 1995 newspaper article by Lawrence Yatsu: "a teacher in Poston I, Joe got married, enlisted in the Army, went overseas and was killed. He was a fine Nisei soldier and outstanding Japanese American."
21. **JAMES K. SHIRAMIZU**, *Staff Sergeant* (No information available.)
22. **MICHIO TESHIMA**, *Private*, 442nd/100th Unit, Company C, was inducted April 1944 and killed in action April 5, 1945 near Castel-Fiorentino, Italy at the age of 22. He was born on March 8, 1923, in Riverside, California, and was inducted in April 1944. He was the youngest of four brothers and "a superior athlete in all sports."
23. **DANIEL TSUKAMOTO**, *Private First Class* (No information available.)
24. **SHICHIZO TOYOTA**, *Private First Class*, 442nd Regimental Combat Team, Co. E, was killed in action on July 13, 1944 at San Luce in the Rome-Arno-Leghorn Campaign in Italy, at the age of 25. He was inducted on June 5, 1943. He was one of four Toyota brothers with three serving in the U. S. Armed Services and all serving in Europe. Shichizo was born on November 10, 1919, in Modesto, California. The family moved to Gilroy and farmed there until the war broke out. Final resting place is in Arlington National Cemetery
25. **JOHN TSUYOSHI YAMAMOTO**, *Private First Class*, 442nd Regimental Combat Team, Co. H, received his basic training at Camp Shelby, Mississippi, and was killed in action on July 15, 1944 at Grosseto, at the age of 20. He was born on November 29, 1924, in Oceanside, California, was inducted at Fort Logan, Colorado, in June 1943. Final resting place is in a U. S. Military Cemetery in Florence, Italy.

IN THE BEGINNING. . . (May 10, 1942 - Dec. 1943)
(Information from Bancroft Library, U. C. Berkeley)

1. " Shig Nakashima, a volunteer from El Centro, was the first evacuee to set foot in Poston. This was on May 10, 1942.
2. Poston's peak population was recorded in August 1942 when the housing division listed 17,942 residents.
3. The Colorado River War Relocation Center was the only center under the dual supervision of the WRA and the Indian Service until January 1, 1944 when control was transferred wholly to WRA.
4. James D. Crawford, then Unit II Administrator, undertook on October 18, 1942, to keep track of Poston's weather reports. The highest temperature, 121 degrees, was recorded on July 25, 1943, and the lowest, 20 degrees, on January 19, 1943.
5. Poston Kuwahara was the first baby born in Poston on May 25, 1942. Since then and up to December 21, 1943, there were 456 who could claim Poston as their birthplace.
6. Construction on Poston Unit I began on March 21, 1942, and was open for the first evacuee occupants on May 10. Poston II opened on July 3, Poston III on August 3.
7. The Colorado River Irrigation Project is the oldest in the United States, having been established in 1868 when Congress appropriated \$50,000 for the venture.
8. The Poston Chronicle first appeared as a daily on May 13, 1942 under the masthead Daily Official Information Bulletin. This was modified on July 10 to Press Bulletin and changed to The Poston Chronicle on Dec. 22 as the result of a community-wide name contest. It became a tri-weekly in September 1943.
9. Death first visited Poston on May 23, 1942. Up to Dec. 21, 1943 it had been a pretty steady visitor, claiming 142 persons."



**FIFTIETH YEAR
SINCE THE CLOSING OF POSTON
NOVEMBER 28, 1945 - November 28, 1995**

(Bancroft Library, U. C. Berkeley)

“FOR PRESS RELEASE NOVEMBER 25, 1945 OR LATER

“ POSTON ARIZONA, November 25 -- Only the November winds now disturb the desert dust on which the barrack city of Poston was built. Once the third largest city of Arizona with a peak population of 17,942 in the fall of 1942, the Colorado River Relocation Center is now vacant of evacuee residents. On the evening of November 25, six days before the scheduled closing of the center, the last 50 families of Japanese Americans returned to the central and southern counties of California in which they had homes before the war. Camps II and III had previously closed the end of September. In line with W.R.A. policy, all the relocation centers will be closed by December 1 of this year. After the relocation of its loyal residents, the Tule Lake Segregation Center at Newell, California, will close on February 1 of next year.

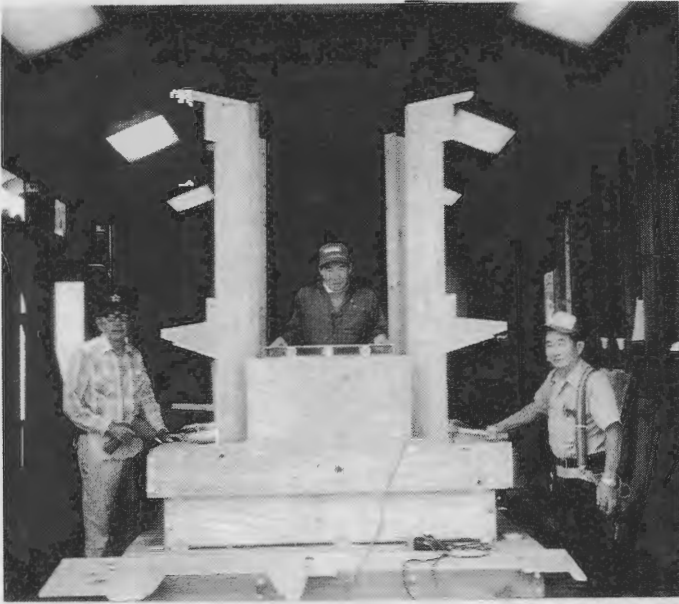
“ Poston, named after Colonel Charles D. Poston who was in 1864 Superintendent of Indian Affairs of Arizona Territory, is located on an area of some 72,000 acres on a previously “undeveloped” part of the Colorado River Indian Reservation. Thirty-two hundred acres of desert land have been cleared and 2,500 acres put under irrigation since the opening of the center. Truck crops were planted on 895 acres of this land, while on the remainder, alfalfa, barley, wheat and other grains were grown. A total of 3,500 tons of vegetables and melons were harvested. The soil in this valley was found to be deep and fertile and an excellent quality of vegetables was produced with yields equaling those of the Salt River and Gila Valleys. As a means of disposing of garbage, a swine herd was maintained on the project. From this enterprise 3,893 hogs were slaughtered, producing 667,180 pounds of pork. The main irrigation canal leading from Headgate Rock Dam has been extended 17 miles to bring water to the center. Twenty-four miles of distribution laterals, 28 miles of farm ditches and an 18-mile long drainage canal have been constructed by evacuee labor.

“ During the first year many hundreds of workers contributed to the war effort, some going as far as Colorado and Utah to work in the fields for as long as six months at a time. During an emergency when it was imperative to have cotton pickers in Arizona, permission from the Army was granted to hundreds of evacuees who volunteered for the work.

All land, other than that on which the camp sites are located, has been turned back to the Indian Service, which is continuing its agricultural development. Sixteen families of Hopi Indians have been living at Camp II since the first of September.”



THE PROCESS OF CONSTRUCTION

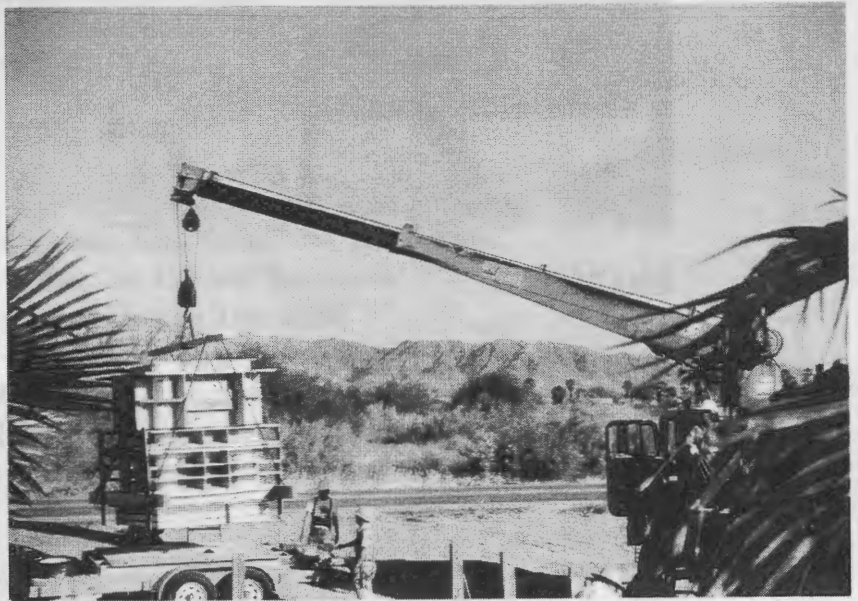


May 2, 1995

In Ted Kobata's backyard in Sacramento, with the interior pattern set, the base portion of the mould begins to take shape. Pausing a moment are Kay Urakawa, Jim Kobata and Ted Kobata.

May 18, 1995

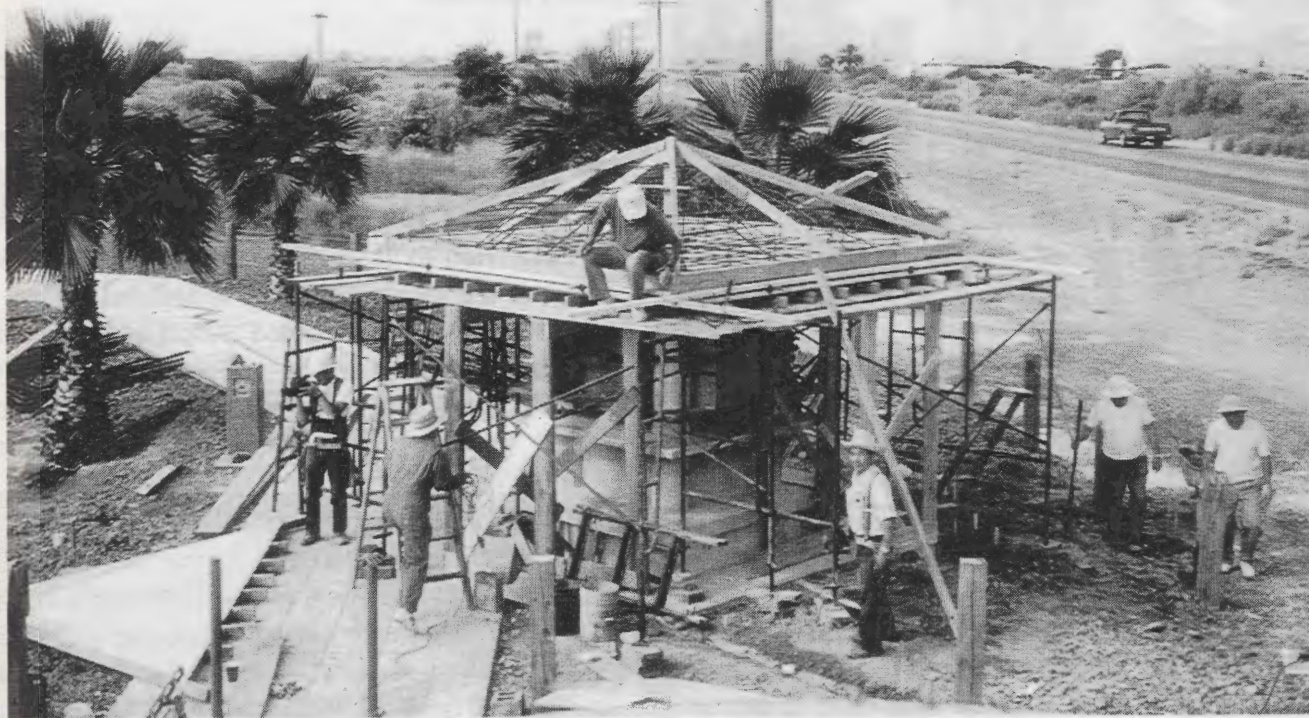
Transferring the mould off the trailer to the site.



May 20, 1995

Break time for a few moments of relaxation!





May 25, 1995

Ted Kobata's R.V. supplied electricity via generator for electric tools, served as kitchen for the cooks and as headquarters for the construction crew. Jim Kobata, Sus Satow and Sid Arase preparing roof section, Duke Takeuchi and Jim Namba pulverizing leftover concrete for future patchwork, and John Sunahara and Ted Kobata preparing tools.



May 22, 1995

Providing the men with homecooked meals, the ladies have a night off and enjoy a meal out.

Left, Emi Nakashima, Betty Kobata and Jean Arase.



May 22, 1995

Kiosk Work Crew: front row, left to right, Betty Kobata, John Sunahara, Duke Takeuchi; second row, Ted Kobata, Emi Nakashima, Jim Namba, Sid Arase; third row, Larry Nakashima, Jim Kobata, Sus Satow.
Missing: Jean Arase, Kay Urakawa and George Yomogida



May 31, 1995
Kiosk completed!

POSTON KIOSK DEDICATION PROGRAM

Colorado River Indian Reservation

Poston, Arizona

11:00 a.m. , November 7, 1995

Musical Prelude

Parker High School Band
John Woody, Band Master

11:00 a.m. OPENING REMARKS

Joanne Iritani
Mistress of Ceremony

POSTING OF COLORS

Otis Kadani
Harold Harada
Richard Asami
Kern Kono

PLEDGE OF ALLEGIANCE

Paul Takehara

THE NATIONAL ANTHEM

Soloist: Tom Masamori

INVOCATION

Orlando Laffoon, Interim Pastor
Poston Community Baptist Church

GREETINGS

Daniel Eddy Jr. , Chairman of CRIT
Russell Welsh Vice chair
George S. Oki Sr. , Co-Chairman
Poston Monument Committee

RECOGNITIONS

UNVEILING OF PLAQUES ON KIOSK

TRIBUTE

THE ADDITION OF THE NAME TO THE
MONUMENT PLAQUE

Nancy Matsuda / Susumu Satow

S/SGT. TIMOTHY I. MIZOKAMI

FLORAL PRESENTATION

MOMENT OF SILENCE / TAPS

"THAT WHICH RE-MADE AMERICA"

The Rev. Dr. George Aki, Retired
Pastor Emeritus,
Hollywood Independent Church, L.A.

"AMERICA THE BEAUTIFUL"

Soloist: Sachi Endo Sugita

"CREDIT WHERE CREDIT IS DUE"

Stephen Nakashima, Attorney
Member, U.C. Board of Regents

BENEDICTION

Roy Hayashi
Orange County Buddhist Church

ANNOUNCEMENTS

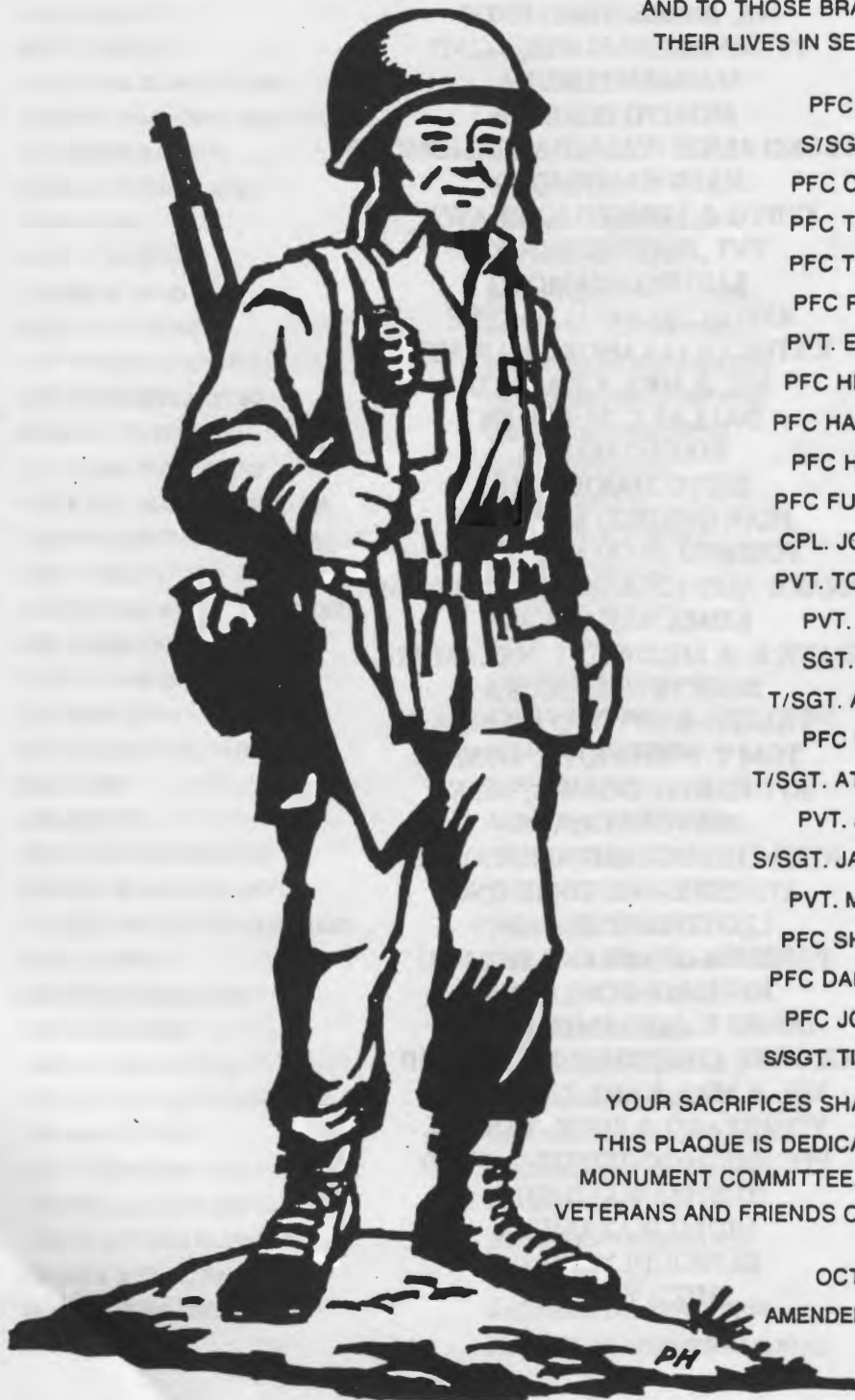
RETIRING OF COLORS

Musical Postlude

TRIBUTE

TO ALL MEN AND WOMEN WHO HONORABLY SERVED IN THE UNITED STATES ARMED FORCES IN DEFENSE OF THIS NATION AND ITS PEOPLE, PARTICULARLY TO THOSE AMERICANS OF JAPANESE ANCESTRY, WHO, DURING WORLD WAR II, FOUGHT SO VALIANTLY FOR THEIR COUNTRY WHILE THEIR PARENTS AND FAMILIES WERE BEING INTERNED IN THE POSTON WAR RELOCATION CENTER WITHOUT DUE PROCESS OF LAW.

AND TO THOSE BRAVE YOUNG MEN WHO GAVE THEIR LIVES IN SERVICE TO THEIR COUNTRY:



PFC HIROO ENDO
S/SGT. ABE M. FUJI
PFC CHARLES FUJIKI
PFC TADAO HAYASHI
PFC TORAO HAYASHI
PFC PAUL HORIUCHI
PVT. EUGENE INOUE
PFC HENRY IZUMIZAKI
PFC HARRY MADOKORO
PFC HACHIRO MUKAI
PFC FUMITAKE NAGATO
CPL. JOHN NARIMATSU
PVT. TOM T. NISHIMOTO
PVT. KONGO NITTA
SGT. JOHN OGAWA
T/SGT. ABRAHAM OHAMA
PFC LLOYD ONOYE
T/SGT. ATSUSHI SAKAMOTO
PVT. JOE SHIOMICHI
S/SGT. JAMES K. SHIRAMIZU
PVT. MICHIO TESHIMA
PFC SHICHIZO TOYOTA
PFC DANIEL TSUKAMOTO
PFC JOHN YAMAMOTO
S/SGT. TIMOTHY I. MIZOKAMI

YOUR SACRIFICES SHALL ALWAYS BE REMEMBERED.
THIS PLAQUE IS DEDICATED BY THE POSTON MEMORIAL
MONUMENT COMMITTEE, FORMER INTERNEES OF POSTON,
VETERANS AND FRIENDS OF THE FIFTIETH YEAR OBSERVANCE.

OCTOBER 6, 1992
AMENDED NOVEMBER 7, 1995

CONTRIBUTIONS HAVE BEEN RECEIVED

In Memory of

HELEN F. AKAHORI
MR. & MRS. TOZO ENDO
PFC CHARLES FUJIKI, 442ND
MANABU FUKUDA
MORITO FUKUTO
MITSUKO ALICE (YAMADA) HASHIMOTO
NAMI HASHIMOTO
CHIYO & YONEZO ICHIKAWA
PVT. EUGENE INOUE
SABURO IWAMOTO
RYO (ICHIKAWA) KAKEBE
KATHRYN (AKAHORI) KAWAYE
MR. & MRS. J. KAZATO
DALLAS C. McLAREN
MASAO MAEDA
ISUYO MAKISHIMA
JEAN (HIROSE) MATSUDA
YOSHIKO (OTA) MITSUOKA
HANAKO AMY (OKAMOTO) MORIYAMA
KOMA NAKAGAWA
FRANK E. & MILDRED T. NAKAMURA
JUNICHI NAKAMURA
TAMIZO & MIYONO NIMURA
TOM T. NISHIMOTO, 442ND
SGT JOHN N. OGAWA, 442ND
NATOMI OHARA
JOAN CHIZUKO (KITAMURA) OKI
YONESHIRO & TOME ONO
LLOYD ONOYE, 442ND
PARENTS OF HELENE SHIMIZU
JOE SHIOMICHI, 442ND
JAMES K. SHIRAMIZU, 442ND
GEORGE YOSHIZUMI TAKAHASHI
MR. & MRS. KANE TANAHARA
YOSHITARO & SUYE TANAKA
PFC SHICHIZO TOYOTA, 442ND
TOSHIO WAKIMOTO
HIDEO WATAMURA
BUNKICHI YAMADA
SHIZU YAMADA

CONTRIBUTORS TO THE POSTON KIOSK AND MAINTENANCE FUND

AS OF OCT. 26, 1995

MR. & MRS. HIDEO ABE
 MR. & MRS. JAMES ABE
 KIMIKO ABE
 HARRY & MAE ADACHI
 GEORGE & YOKO AIHARA
 CHIYO AISO
 JOE & KAY ALLMAN
 MASASHI AMANO
 MAY AMEMIYA
 BETTY AMIOKA
 MR. & MRS. ISAMU AMIOKA
 ELAINE L. (McLAREN) ANDERSON
 EDDIE & DORA ANDO
 DONALD & PEGGY AOKI
 DORIS AOKI
 PAUL T. ARAKAWA
 MINNIE M. ARAO
 SID & JEAN ARASE
 ARCO FOUNDATION, INC.
 MR. & MRS. BOB ARIYASU
 MARK & ITSUKO ASADA
 MR. & MRS. TARO ASAMI
 MR. & MRS. MASATO ASAKAWA
 MOTO & FLORENCE ASAKAWA
 HISAO ASHIDA
 FARRINGTON & HELEN BLAISDELL
 MR. & MRS. ANTHONY CASTEL
 PAUL CHIKAHISA
 RAY CHIKAHISA
 FLAVIO & NATSUKO CIFERRI
 KIM COMB
 SHOJI DATE
 FRED & NANCY DEGUCHI
 THOMAS & AKIYO DE LOYD
 VALERIE (HASHIMOTO) DEMAREE
 PAUL K. DOHI
 ARTHUR & OSAME DOI
 KEN & JOAN DOI
 MRS. LEWIS E. DOWNS
 PHILIP & LINDA DUNCAN
 MICHIKO EGUCHI
 MS CRYSTAL EKIMOTO
 YOSHIO & KIYOKO EKIMOTO
 LYNDA (HIRATA) ELLINGSON
 FRANK S. & IDA A. ENDO
 FUMIO & YOKO ENDO
 MASAO ENDO

MR. & MRS. ROBERT ENDO
 JERRY J. & DOROTHY ENOMOTO
 LORRAINE S. ENOMOTO
 FRANK & SUYE FUJIKAWA
 ALBERT & SUZUKO FUJIMOTO
 CHARLES FUJIMOTO
 GEORGE & MASAKO FUJIMOTO
 JACK & GRACE FUJIMOTO
 TOM & AMIE FUJIMOTO
 TOSHIO & MICHU FUJIMOTO
 MRS. AMY E. FUJIMURA
 JEAN A. FUJITA
 ROY M. FUJITA
 YUTAKA FUJITA
 JACK & PAT FUJIWARA
 KAY (SUZUKI) FUKUDA
 SAM & TOMOYE FUKUGAWA
 SACHI & DAVID FUKUSHIMA
 HONORABLE MORIO FUKUTO
 BEN & DOROTHY FUKUTOME
 SHIG & KOKO FUKUTOMI
 ROBERT G. FUNARI
 ISAMU FURUIKE
 MRS. MISATO FURUIKE
 SADAOKO FURUIKE
 MIYOKO FURUKAWA
 IRENE K. FUTA
 MRS. SHIYOKO FUTABA
 JOHN & SETSUKO (HADA) FUYUUME
 ARLINE M. GOODRICH
 BARBARA L. GROMACKI
 ARNOLD M. HAGIWARA
 IYOKO (SASAKI) HAMADA
 YOSHIO HAMADA
 MRS. YUKIO HAMADA
 EDWARD & BESSIE HAMAKAWA
 GOICHI & ALICE HAMAMOTO
 TAISAKU HAMASHIMA
 MRS. CHIYEKO S. HARADA
 KEI & REIKO HARADA
 MRS. TOSHIKO IKUMA HARADA
 HELEN (KAZATO) HASEGAWA
 HENRY HASHIGUCHI
 JAMES & RYO HASHIGUCHI
 JOE HASHIMOTO
 KATSUMI & DOROTHY HASHIMOTO
 MASATERU & MITSUE HASHIMOTO

MRS. YAS HASHIMOTO
 MITSUKO HATADA
 LILY HATANAKA
 VIOLET (ICHIKAWA) HATANO
 JOHN & SACHIE HAYAKAWA
 ROY & CLARA HAYASHI
 RUTH N. HAYASHI
 SHIGERU HAYASHI
 AKITOSHI & FUMIKO HIGASHI
 MS. JANICE HIGASHI
 KAZUHISA HIGASHI
 MARY T. HIGASHI
 MRS. MAY HIGASHIYAMA
 TAK & MAE HIGUCHI
 MRS. SALLY HIRAI
 MR. & MRS. TOM HIRAISHI
 JOYCE (KANAMURA) HIRAOKA
 JOE HIRASE
 MAE K. HIRASUNA
 ROBERT & TOSHIKO HIRATSKA
 MR. & MRS. KUNI HIRONAKA
 MITSUJI & TOKIE HIRONAKA
 HIDEAKI HIROSE
 DR. HIDEO & CLARA HIROSE
 TOORU HIROSE
 GEORGE & RUTH HIYANE
 BETTY HOCHI
 BEN HONDA
 TOM & MARY (NAGANUMA)
 HONMA
 TERUKO HORIKOSHI
 MASARU HORIUCHI
 HANDY HORIYE
 NANCY ICHIKAWA
 SUSAN (TAKEUCHI) ICHIKAWA
 FRANK ICHISHITA
 FRED G. IDA
 YUKIO IDE
 EMILY K. IGARASHI
 MASAO & GRACE IGASAKI
 KENJI IGUCHI
 BUNJI & EIKO (HADA) IKEDA
 GEORGE K. & JANET Y. IKEDA
 GEORGE R. IKEDA
 LANDA IKEDA
 MICHU IKEDA
 SUSUMU & SADAOKO IKEDA

CONTRIBUTORS TO THE POSTON KIOSK AND MAINTENANCE FUND

AS OF OCT. 26, 1995

HIYOSHI IMOTO
 MIKE & ALYCE IMOTO
 RUBY S. IMOTO, DDS.
 SAM S. IMOTO
 JANE INOUE
 ROY INOUE
 TAKAJI DAN & MARGARET INOUE
 FRANK & JOANNE (nee TAEKO ONO)
 IRITANI
 GEORGE ISHIBASHI
 KAY ISHIBASHI & FAMILY
 HENRY ISHIDA
 TATSUSHI ISHIDA
 RUBY ISHIKAWA
 TOSHIKO IWAKI ISHITANI
 SEISO & JOYCE ISHIZUE
 HATSUMI TASHIRO ITANI
 MARTIN L. ITO
 NOBORU & BELLE ITO
 WALTER & ANNA ITO
 EUGENE & JANE ITOGAWA
 DONALD & MAY IWAHASHI
 MICHAEL IWAHIRO
 WILBERT & KIYOKO IWAMI
 MR. & MRS. J. J. IWANA
 MRS. HELEN CHIZU IWANAGA
 MASAMI & HISAKO IWASA
 YOSHIO & RITSUKO IWASA
 CHARLES & ANN IWASAKI
 TAMIKO IWASHITA
 DR. RICHARD H IWATA
 MARIE JENKINS
 OTIS & KIYOKO KADANI
 CHIYEKO (WATANABE) KAJIKAWA
 MRS. KATHRYN (YOSHIDA) KAKIBA
 JANE KAKIGI
 BENE KAKITA
 TOMIKO KAKITA
 EMIKO KAKU
 HIROSHI KAMEI
 KIYOSHI KAMEI
 EVELYN (MATSU) KAMIGAWACHI
 ROBERT KANAGAWA
 MILTON T. KANATANI
 ALICE S. (GOTORI) KANDA
 DONALD K. KANEMARU
 TAKAKO KANEMOTO

MR. & MRS. HARRY KANESHIRO
 PAUL T. KANEYUKI
 THOMAS KARASAWA
 RICHARD & MARY KARASAWA
 NAOMI KASHIABARA
 CHARLIE KATAYAMA
 FUSAKO KATO
 KAZUO KATO
 MR. & MRS. PAUL K. KATO
 WESLEY KATO
 JAMES & JOYCE KAUFMAN
 MARY M. KAWABATA
 MRS. JUNE KAWADA
 TOSHIKO IKEMIYA KAWAGOE
 KAWAGUCHI BROTHERS
 ROSE F. KAWAHARA
 YONEKO KAWAHARA
 MR. & MRS. HACHI KAWAKAMI
 THOMAS G. KAWAKAMI
 JAMES KAWAMOTO
 YUKIO & MITSUKO KAWAMOTO
 MR. & MRS. JAMES KAWAMURA
 JOE & LILLIAN KAWAMURA
 MRS. JUNE KAWANO
 SHIGEKO SAKAMOTO KAWANO
 YUKIO KAWARATANI
 AIKO KAYASHIMA KAWASAKI
 JOHN F. KAWASAKI
 MAE KAWASHIMA
 MR. & MRS. HUGO KAZATO
 GEORGE & SETS KIMURA
 KAZUO & MOLLY KIMURA
 KIYO KIMURA
 MRS. MIYOKO KIMURA
 DR. EUGENE & LOUISE KINOSHITA
 MRS. DARLENE KISHI
 JIM & SALLY KISHI
 YOSHIKO KISHI
 SHIZUKO (IKEDA) KITAHATA
 HELEN (AIHARA) KITAJI
 SHIG & MARY KITAUCHI
 NELSON KITSUSE
 MR. & MRS. JAMES KOBATA
 TED & MIYO KOBATA
 YOSHIKO KOBATA
 JAMES K. KOBAYASHI
 GEORGE & JOANNE KOBORI

SONOE KODA
 SEIJI & LINDA KODAMA
 TOSHIKO KOGURA
 MITSUKO KOHATSU
 FRED KOHNO
 TERRY & HISAKO KOIKE
 NORI KOMORITA, RN, PHD.
 MATTHEW M. KONATSU
 BARRY & KAREN KONDO
 HARVEY K. & JULIE J. KONDO
 MARJORIE KONISHI
 KERN & GRACE KONO
 AKIRA & ATSUKO KOSAKA
 MRS. TERUKO KOSHIYAMA
 YO KOUNO
 HIROKO KOWTA
 TADASHI KOWTA
 DR. SUMIO & ADA (nee SAYOKO
 HOSAKA) KUBO
 TOYOKO KUBOTA
 GORO & KAZUE KUDO
 MASARU & DORIS KUNIMURA
 MR. & MRS. ALVIN KUNISHI
 MRS. ALYCE K. KURANAGA
 SHIGEMI KURODA
 IRENE KUROMIYA
 JENNIE (NODA) KUROYAMA
 SACHIKO (SAITO) KUSUMI
 ROY Y. KUSUMOTO
 RAY & YUKIE KYONO
 ALEXANDER H. LEIGHTON
 LEXINGTON PLAN
 ADMINISTRATORS, INC.
 ALICE LINN
 KIYO MACHIDA
 MIYAKO MACHIDA
 GEORGE & TERRY MAKISHIMA
 HAROLD MAKISHIMA
 ROYCE L. MAKISHIMA
 MRS. TSUGI MAKISHIMA
 PHILIP A. MARSHALL
 HIDEO & SHIZUE MARUYAMA
 TOM MASAMORI
 THE THOMAS MASUDA MEMORIAL
 FOUNDATION
 c/o MRS. KIKUYE MASUDA
 GEORGE & CHIYOKO MASUMOTO

CONTRIBUTORS TO THE POSTON KIOSK AND MAINTENANCE FUND

AS OF OCT. 26, 1995

HELEN MASUMURA
MERRY K. MASUNAGA
SACHIKO M. MASUNAGA
MR. & MRS. HIROSHI MATOBA
TAD MATOI
KENJI & NANCY MATSUDA
MRS. MAY T. MATSUDA
SHIZUMI MATSUDA
STELLA NAKADATE MATSUDA
JIM & JANE S. MATSUEDA
YOSHIKO W. & PEARL MATSUHARA
EDWARD & BETTY MATSUI
RUBY MATSUI
MRS. ELSIE MATSUMOTO
FUMIKO MATSUMOTO
DR. KENNETH K. & JUNE
MATSUMOTO
LARRY & DOROTHY MATSUMOTO
RITS (HATASHITA) MATSUMOTO
TOM & PAT MATSUMOTO
KAZUO & KATHERINE MATSUMURA
GEORGE & LILY MATSUNAGA
ITSUKO IRENE MATSUNO
KENICHI & BESSIE MATSUO
TAKASHI & AKIKO MATSUSHIMA
TOSHI MATSUURA
JACK & IHOKO MAYEDA
RAY KUNI MAYEDA
MISAKO KATANO McCABE
DONALD & LORRAINE McCARTHY
MRS. SHIORI (KAJKAWA) McLAREN
SYLVIA McNAIR
MR. & MRS. FRANK MENDA
MITSUO & YAEKO MENDA
JAMES P. MERCHANT
K. ROBERT MIDZUNO
MR. & MRS. HIRO MIFUNE
GEORGE & SATSUE MIKAMI
TAKAKO YAGI MINAMIDE
WILLIAM & SAYO MINE
MRS. ALICE MISUMI
MRS. NOBORU MITSUOKA
NORIO MITSUOKA
ELAINE & DONALD MIYAGI
MITSUGI & MUTSUKO (KODAMA)
MIYAKAWA
HELEN ENDO MIYAKE

TED & DOROTHY MIYAMOTO
FRANK K., JR. & KIKUYE MIYAMURA
ROBERT & EUNICE MIYATAKE
KAZUYE KAY MIYOKO
TED & TOMOKO MIZUKAMI
MIZUKI FAMILY
MIYOKO MIZUNO
YOSHIHARU MIZUTANI
FRANK S. MORI
EUGENE & LINDA ETO MORIGUCHI
KAY KAZUNOMI MORIMOTO
MASARU & ALICE (WATANABE)
MORITA
SHIZUE MORITA
MRS. CHIEKO L. MORIYAMA
TOM MORIYAMA
HIDEO MOTOIKE
MR. & MRS. JIM MOTOKANE
JANE MUKAI
JIRO & MICHIKO MUKAI
TOM T. MURAKAMI
NED & BETTY MURATA
ATSUKO (YAMAGUCHI)
MURAYAMA
SUSIE (OMURA) MUROSAKO
MRS. LORRAINE NAGAE
SHIZUKO NAGAKURA
GEORGE & ALETHEA NAGATA
HARRY & REIKO NAGATA
STANLEY & HARUYE NAGATA
LINCOLN & MARY NAGATO
KIMIKO & WALLY NAKAGAMI
HARUMI NAKAMURA FAMILY
ISAMU SAM NAKAMURA
KIYOKO NAKAMURA
MR. & MRS. TODD NAKAMURA
UNOM NAKANISHI
REIKO NAKANO
ESTHER NAKASHIMA
FRANK & HELEN NAKASHIMA
S. STEPHEN NAKASHIMA
HENRY H. & JULIA NAKASONE
TONY & SALLY NAKAZAKI
JIM H. NAMBA
JOHN S. NAMBA
ROY & ARLYNE NAMBA
RAY & GRACE NARIMATSU

DONALD & MARY NEGI
JACKSON H. NIINO
HERBERT & JULIA NIYA
HENRY & LILLIAN NIIZAWA
KUNIO CLYDE NINOMIYA
JOANNE C. NISHI
KEN NISHI
FRED NISHIDA
DR. & MRS. GEORGE NISHIDA
MARSHA MASAKO NISHIDA
MRS. LOUISE M. NISHIKAWA
KIYOSHI NISHIMORI
MR. YAE NISHIMOTO
BILL & DONNA NISHIMURA
EDDY & ALICE NISHIMURA
EDITH K. NISHIMURA
GEORGE NISHIMURA
KEN K. NISHIMURA
SUMAKO NISHINAKA
MR. & MRS. BEN NISHIOKI
GEORGE NISHIOKI
NORMAN & FAYE NISHIOKI
FRED & TAKAKO NISHIZAWA
MRS. MARY NITTA
MAY (SEGAWA) NITTA
SATOSHI NITTA
BEN T. NOBUHIRO
GEORGE NODA
TOMIKO (KAMEI) NODA
MORIAKI (MO) & NELLIE NOGUCHI
LELAND K. & LO REE W. NOMURA
LARAIN (KUWADA) NOTA
JIMMY NOZAKI
JACK & ATSUKO OBATA
SHUICHI OBATA
HATSUMI OGATA
MUTSUYE OGATA
JONATHAN & KYOKO OGAWA
JOSEPH & MARGIE OGAWA
RUTH OGAWA
SHIZUKO OGAWA
GEORGE T. OHAMA
JUNE & CHISATO OHARA
MITSURO OHARA
TARO & YUKIYE OHASHI
KATASHI OITA
MR. & MRS. ROBERT OKA

CONTRIBUTORS TO THE POSTON KIOSK AND MAINTENANCE FUND

AS OF OCT. 26, 1995

SUE OKADA
 HIDEO OKANISHI
 GEORGE SAM OKI
 GEORGE & GLADYS OKINO
 HOOTCH & CHIYO OKUMURA
 ALICE OKUNO
 FRANK K. & VIOLET OMATSU
 KEN ONISHI
 ERNEST & RUTH ONO
 GEORGE M. OSHIMA
 KASU OSHIMA
 REV. & MRS. ROBERT OSHITA
 DAVID OSUMI
 TAKESHI OTA
 TETSUO & REIKO OTA
 Y. JEAN OTA
 MINORU & BERNICE OUYE
 MRS. AKIKO OWASHI
 HIRAM & SHIGEKO OYE
 MRS. KAZUE TSUCHIYAMA OYE
 SUNKIE TOZUMI OYE
 ROBERT & ANNA RUPKEY
 AYAME SADAHIRO
 NARUMI SADAHIRO
 MR. & MRS. TOSHI SADAHIRO
 SCOTT SAGAWA
 EMI YOKOYAMA SAIKI
 IRENE SAIKI
 JOE SAIKI
 PAUL A. SAKAI
 ROBERT & SADY KITAOKA SAKAI
 WILLIAM SAKAI
 HELEN SAKAISHI
 JAMES M. SAKAMOTO
 KATS SAKAMOTO
 KAYE KIYOKO SAKAMOTO
 GEORGE & NOBUKO SAKANARI
 MAE SAKASEGAWA
 TOMMY SAKATA
 KIYOSHI E. SAKEMI
 SAM SAKODA
 ALICE SAKUMA
 KIKUE L. SANO
 GEORGE & CHIYEKO SASAKI
 HIDEO & KISA SASAKI
 RAKUMI SASAKI
 SADAYOSHI "SADIE" SASAKI

DON & GERTRUDE SATO
 MR. & MRS. GEORGE K. SATO
 MR. & MRS. KENJI SATO
 KENNETH & EMMA SATO
 MR. & MRS. NOBUICHI SATO
 RONALD & AUDREY SATO
 STEVE SATO
 TOM & KIMI SATO
 MRS. YOSHIKO SATO
 BILL & BETTY SATOW
 ERNEST A. SATOW
 HANNAH SATOW
 LEO & DALE SATOW
 OSCAR & LILLIAN SATOW
 SUSUMU & LILY SATOW
 SUSUMU & TAMI (MATSUMOTO)
 SATOW
 TOSHIKO SATOW
 ROSE (HIRATA) SEGIMOTO
 GEIN & AGNES SEKI
 MRS. FRANCES SERIKAKU
 KATS KEI SHIBA
 TAKATARO SHIBA
 WILLIAM & MARIE SHIBA
 TADASHI SHIBATA
 MAE (OSHITA) SHIGAKI
 HIROSHI & CHIYEKO (HIBINO)
 SHIKUMA
 AMY (INOUE) SHIMADA
 MRS. JANE H. SHIMADA
 MR. & MRS. GENE SHIMAJI
 GENE & ELSIE SHIMAMOTO
 EMI H. SHIMIZU
 FUSA SHIMIZU
 MR. & MRS. MAS SHIMIZU
 TOMIKO SHIMODA
 NOBORU & BLANCHE SHIMOTSUKA
 GEORGE & MAY SHINDO
 ISAMU & SUMIYE (NAKASHIKI)
 SHINGAI
 MRS. MATSUYE SHINGAI
 SEIICHI SHINODA
 ELSIE (OKAMOTO) SHIRAMIZU
 SHIZUKO R. SHIRAMIZU
 TAKEO H. SHIRASAWA
 KAYOSHI SHODA
 MR. & MRS. DAVID SIMAS

MS SHEILA B. SMITH
 TERESA T. SMITH
 ELSIE M. SOGO
 KAYKO (MATSUMOTO) SONODA
 MRS. MITSU SONODA
 THOMAS SONODA
 EMMA (OKAMOTO) STEWART
 SHIOJI & SHARON SUGAYA
 TAKESHI SUGAYA
 TEI SUGI
 SACHIYE ENDO SUGITA
 TOM & SHIRLEY SUGIMOTO
 EDDIE SUGURO
 TAKASHI & ROSE SUMI
 MR. & MRS. WALLACE SUMIDA
 JOHN & TOKIE SUNAHARA
 MASAYUKI & MAY SUNAHARA
 MR. & MRS. RIO SUNAHARA
 JAMES K. SUZUKI
 SYNCOR INTERNATIONAL CORP.
 DR. AKIRA TAJIRI, O.D.
 JAMES M. & JUNE F. TAJIRI
 SHINKICHI GEORGE TAJIRI
 MARY C. TAKAGAKI
 MARY TAKAHASHI
 YOSITO & YOSHIYE TAKAHASHI
 ROY & MARY TAKAI
 MR. & MRS. MINORU TAKAMOTO
 MR. & MRS. TAK TAKAMURA
 RON TAKAO
 KATSUMI J. & YOSHIKO TAKASHIMA
 RAY & ADELL TAKATA
 ROY & FRANCES TAKEDA
 TSUTOMU TAKEDA
 MR. & MRS. TOM TAKEHARA
 SADAICHI & YOSHIKO TAKEMOTO
 JANE (YAMAGUCHI) TAKESHITA
 DR. MASAO & MRS. AIKO
 TAKESHITA
 SHIRO TAKESHITA
 MRS. HENRY (SALLY) TAKETA
 DUKE & MAY TAKEUCHI
 MASA TAKEUCHI
 MR. & MRS. TAK TAKEUCHI
 CHARLES & IRENE TAMBARA
 CLARE TAMURA
 MR. & MRS. TAKAO TANABE

CONTRIBUTORS TO THE POSTON KIOSK AND MAINTENANCE FUND

AS OF OCT. 26, 1995

FRANK & KINUYE TANAKA
MR. & MRS. HENRY TANAKA
DR. KOUICHI & GRACE TANAKA
MASAKO TANAKA
MEGUMI TANAKA
ROBERT TANAKA, M.D. & SALLY
LOCHOWSKI
SADAKO SADIE TANAKA
MR. & MRS. TAKUJI TANAKA
TYLER TANAKA
MR. & MRS. VAL TANAKA
WILLIAM S. & MARI TANAKA
MRS. YONE TANAKA
JOE TANI
GEORGE & AMY TANIGUCHI
HARUMI TANIGUCHI
JIM & TEIKO TANIGUCHI
MR. & MRS. KIYOSHI TANIGUCHI
FUMIKO TANIMURA
GEORGE & MASAYE TANIMURA
ROBERT T. TANIMURA
MRS. TOSHI TANOUYE
MATSUO TAOKA
AKIKO TATEISHI
MASASHI TAZUMI
PAUL & HISAKO TERASAKI
GARY G. TOGUCHI
THOMAS TOGUCHI
ELEANORE K. TOI
BETTY TOKIWA
BOB K. TOKIWA
DUKE & MAE TOKIWA
MIKIO TOKIWA
MR. & MRS. SHIGERU TOKIWA
TAKESHI TOYOTA
YOSHIO TOYOTA
JOE J. TSUBOI
TOM & KIMIKO TSUBOI
MR. & MRS. MASAO (RUTH OGAWA)
TSUBOTA
ROBERT TSUBOTA
MR. & MRS. ROY TSUCHIYAMA
RICHARD M. & KEIKO TSUDA
JAMES TSUKAMOTO
MRS. MICHIE TSUKAMOTO
RANDOL & JOANNE TSUKAMOTO
TOM T. TSUNODA

HIROSHI & AIKO TSURUI
MARVIN TSUTSUI
THEODORE TSUYUKI, M.D.
FLORENCE UENO
JOE UKEGAWA
MR. & MRS. HERBERT UMEDA
JOE UMEDA
MRS. KIYO UMEDA
MITOSE UMEDA
MR. & MRS. HIROSHI UOTA
EARRY URAKAWA
TAK & MIYO URAKAWA
ANNA & DANA URATA
ADA Y. UYEDA
YOSHIO UYEDA
SABURO UYEJI
TOM UYEOKA
JAMES & SHIRLEY VAN MAREN
WILLIAM R. VETTER
JACK F. & ANN VOSS
HIROSHI & ALINE (KITADA) WADA
TAD & FRANCES WADA
KAREN WADE
MRS. ROSE Y. WATAMURA
ARNOLD WATANABE
MR. & MRS. FRANK WATANABE
HARU WATANABE
MR. & MRS. KAY WATANABE
SAM & ROSE WATANABE
MITZIE (NAKATSUKASA) WEISS
ROBERT C. WELLS
BRUCE & AIMY (TANIGUCHI)
WILBUR
FRANCES WILEY
FRANK YADA
TOMMY T. YAGI
MR. & MRS. MITS YAGURA
MITSURA & CIYEKO YAGURA
JIM T. YAJI
CRAIG & MARY YAMA
AYAKO YAMADA
JAMES S. YAMADA
MITSUO & MIYOKO YAMADA
MR. & MRS. TAKEO YAMADA
ALYCE YAMAGUCHI
JAMES YAMAGUCHI
NOBY & AYA YAMAKOSHI

MRS. ANNA S. YAMAMOTO
GEORGE & ADA YAMAMOTO
HIFUMI YAMAMOTO
JAMES & NANCY YAMAMOTO
MR. & MRS. JUNICHI YAMAMOTO
DR. & MRS. MASAO YAMAMOTO
MRS. SHIGETO YAMAMOTO
SHOGO & GRACE YAMAMOTO
SUMIKO YAMAMOTO
DORIS (KAWAHIRA) YAMANE
MRS. KAZU YAMANE
FLORENCE & TAKAMOTO
YAMASAKI
JUNE YAMASAKI
MICHIKO YAMASAKI
MRS. TAKAYE YAMASAKI
SHIGE & ROSE YAMAUCHI
MRS. SHIZUKO YAMAUCHI
TOM & SUMIDO YANAGIHARA
JUNKO FUJII YANAGINUMA
MIWAKO YANAMOTO
TOKIKO YASAKI
AKEMI (MORITA) YASUDA
JOE & SONOYE YASUDA
JANE R. (KATO) YASUKOCHI
DR. TOSHIO YATSUSHIRO
GARY & MATSUKO YEE
JACK & REGINA YEE
FEB & AMY YOKOI
MR. & MRS. ROY YOKOI
EDDIE S. YOKOTA
SHIGEO & ROSE YOKOTE
RYUJI YOKOYAMA
WAKO & MAY YOKOYAMA
MRS. ANN YOSHIDA
CAROLE YOKO YOSHIDA
GARY N. YOSHIMIYA
KAZUO YOSHIMOTO
YONEO YOSHIMURA
DAISY YOSHIYAMA
MR. & MRS. EDWIN YUE
MIYOKO YUKI
TOM M. YUKI
ROSE (SHIRAMIZU) YURA
YASU ZENO

**POSTON AGRICULTURAL PROJECT
AGRICULTURAL PRODUCTION
1942-1945**

CROP	ACRES	AVERAGE HARVEST PER ACRE (LBS)	PRICE PER LB	AMOUNT (\$)
Beans	24.25	3,433	0.140	\$11,642.96
Beets	22.50	12,442	0.030	8,398.35
Broccoli	16.50	5,473	0.120	10,838.16
Cabbage	66.50	14,057	0.030	28,044.90
Cantaloupe	58.00	6,800	0.030	11,831.10
Carrots	64.50	8,049	0.030	15,575.40
Casaba	11.00	6,973	0.030	23,010.00
Cauliflower	6.50	4,950	0.080	2,494.40
Celery	9.25	9,149	0.080	9,416.80
Cucumber	29.20	8,519	0.070	17,413.76
Daikon	64.50	9,149	0.035	21,615.37
Eggplant	10.50	16,050	0.080	13,480.56
Gobo	1.50	2,800	0.025	105.00
Honeydew	56.00	4,386	0.030	7,369.71
Lettuce	39.25	10,109	0.070	27,775.51
Nappa	43.15	17,639	0.045	34,296.71
Okra	0.25	2,000	0.150	75.00
Onion, Dry	53.00	6,563	0.040	13,914.00
Onion, Green	10.50	5,252	0.040	3,606.24
Parsley	1.00	1,725	0.120	207.00
Peas	1.00	2,138	0.100	213.80
Potato, Irish	21.00	3,076	0.040	2,583.80
Potato, Sweet	15.00	3,330	0.060	2,997.54
Pumpkin	1.00	1,110	0.040	44.40
Raadish, Icicle	11.00	4,606	0.040	1,740.64
Shiro Uri	21.50	9,031	0.094	18,593.92
Ao Uri	1.00	1,080	0.020	21.60
Spinach	36.50	11,485	0.080	33,537.12
Squash, Bannana	8.00	3,234	0.050	12,938.60
Squash, Zuc., lt.	1.75	5,986	0.050	523.80
Swiss Chard	6.00	12,212	0.070	5,128.97
Togan	4.00	9,187	0.020	734.96
Tomato	36.70	2,958	0.100	10,856.10
Turnip	11.50	5,358	0.030	3,030.00
Watermelon	128.00	5,721	0.020	14,665.50
TOTAL	891.80			\$368,721.68

OTHER PRODUCTS

Feed Crops	1,122 tons		\$19,311.50
Eggs	126,981 doz	0.42/doz	\$53,331.02
Chickens	124,122 lbs	0.36/lb	\$44,683.92
Pork	667,180 lbs	0.17/lb	\$47,502.50

OUR APPRECIATION

- *The Colorado River Indian Tribes for granting us permission to add a kiosk to the monument complex.
- *Ray Takata, FAIA, for designing the kiosk with the assistance of Stephen Hamamoto (CE Engineer).
- *Ted Kobata and his crew consisting of Sid Arase, Jim Kobata, Larry Nakashima, Sus Satow, John Sunahara, Duke Takeuchi, Kay Urakawa, George Yomogida, and the wives who provided homecooked meals for the men, Jean Arase, Betty Kobata and Emi Nakashima.
- *Conner Byestewa who took care of many of the arrangements for this Dedication Ceremony.
- *The Poston Community Baptist Church for the use of their folding chairs and the pulpit which was constructed and used during 1942-45 by the Poston I Christian Church.
- *The young people of Parker High School who shared their musical talents with us.
- * Karl Oike for designing the cover of this program booklet
- *The Committee members of Sacramento and Los Angeles/San Diego who labored cooperatively in planning for this event and the completion of the kiosk.
- *Pete Hironaka for the design on the T-shirts and the tote bags.
- *Nisei VFW of Monterey (Otis Kadani) for the loan of their American flag and post colors.
- *THANK YOU for your contributions to the Kiosk Fund and the ongoing Maintenance Fund. We are hopeful that with more contributors, it will eventually become a self-perpetuating fund.



The Poston Memorial Monument Committee would appreciate
your monetary assistance.

Enclosed is my contribution of \$ _____ to the Endowment Fund. (Tax deductible donation)

Name _____

Address _____

City, State, Zip Code _____

Former Internee of: Camp I _____, Camp II _____, Camp III _____, Other _____

Please mail your contribution to: Poston Memorial Monument Endowment Fund
c/o Union Bank
P. O. Box 1167
Sacramento, CA 95806

POSTON MEMORIAL MONUMENT AND KIOSK



**ARCHITECT
RAY TAKATA, FAIA**

**ENGINEERING
STEPHEN HAMAMOTO, CE**

**Construction
TED T. KOBATA**

NOTES

NOTES

BOSTON MEMORIAL MONUMENT AND KIOSK



ARCHITECT
RAY TAKATA, FAIA

ENGINEERING
STEPHEN HAMAMOTO, CE

Contractor
TED T. KOBATA