

Wayne Maeda

Wayne
Maeda



2003/11/10

TULELAKE REUNION VI

May 15-16-17, 1998

Doubletree Hotel

Sacramento

Welcome to Sacramento!!

It is our pleasure to host the sixth (& final??) reunion of those who were incarcerated in the Tulelake War Relocation Center from 1942 to 1946.

We appreciate your timely response to our requests for early registration. It has helped us immeasurably.

The traditional Saturday night Mixer will present George Yoshida's 17-piece big band.

The Sayonara Dinner on Sunday will feature Congressman Robert T. Matsui as keynote speaker. Members of the symposium panel, "Redress: A Promise Fulfilled," and others will be honored for their contributions toward the passage of the "Civil Rights Bill of 1988."

Our "thanks" to the management of the Doubletree Hotel for their hospitality in making this event a memorable one.

Organizing Committee



5TH DISTRICT
CALIFORNIA

ROBERT T. MATSUI
MEMBER OF CONGRESS
WASHINGTON, D. C. 20515

May 16, 1998

Dear Friends:

I am honored to welcome you to the sixth reunion of the Tule Lake Relocation Center evacuees. Please accept my very best wishes for what I'm certain will be a memorable weekend.

As we commemorate the tenth anniversary of the passage of redress legislation, this reunion will provide a unique opportunity to reflect upon the hardships and civil rights abuses which our community has had to overcome.

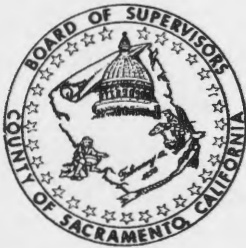
This weekend's special educational programs, such as a symposium on music in the camps, the effect of incarceration on the children of the camps, and the panel discussion on the fight for redress, will showcase an important part of our common history as Japanese Americans.

Most importantly, this reunion will afford the children of evacuees the chance to learn first hand what the internment meant to their preceding generations. I know that this gathering will be an important and moving experience for all the participants.

Very truly yours,

ROBERT T. MATSUI
Member of Congress

NOT PRINTED AT GOVERNMENT EXPENSE



**CHAIRMAN
BOARD OF SUPERVISORS
COUNTY OF SACRAMENTO**

700 H STREET, SUITE 2450 • SACRAMENTO, CA 95814
(916) 874-5481 FAX (916) 874-7593
E-MAIL: illac@co.sacramento.ca.us

April 28, 1998

**Sacramento County
The Community of Trees**



**ILLA COLLIN
SUPERVISOR, SECOND DISTRICT**

**Lyla Ferris Hanson
Chief of Staff**

Greetings!

On behalf of the Sacramento County Board of Supervisors, I wish to welcome all of you to this year's Tulelake Reunion. I especially wish to welcome those who have traveled from other states to be here for this special event. I understand that some individuals are from Washington, Oregon, Nevada, Illinois, New York, Minnesota, and Michigan. I'm pleased that you're here.

I appreciate being asked to participate in your Tulelake Reunion. I look forward to joining you at the Sayonara dinner. I try to attend each year and always find it very moving. It is also an opportunity to pay tribute to former evacuees. I greatly admire their courage and strength. In the face of great adversity, they persevered and set a standard of courage and strength for all Americans. I know how difficult it must be for the evacuees to share the stories of internment, but it is important that the stories be told. We must never again let this injustice and failure of the U.S. Constitution happen to any other group of Americans.

I am honored to be part of your reunion. Best wishes for a wonderful and memorable gathering.

Sincerely,

ILLA COLLIN, Supervisor
Second District





OFFICE OF THE
MAYOR

JOE SERNA, JR.
MAYOR

CITY OF SACRAMENTO
CALIFORNIA

May 16, 1998

CITY HALL
ROOM 205
915 I STREET
SACRAMENTO, CA
95814-2672

PH 916-264-5300
FAX 916-264-7680
TDD (ONLY) 264-5819

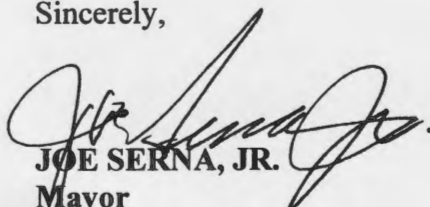
Greetings!

As Mayor of the City of Sacramento, it is my pleasure to welcome you on the occasion of your 6th Reunion in commemoration of those who were incarcerated in the Tulelake Relocation Center. I am indeed pleased and honored to host attendees from many parts of the United States.

The history that lies in Executive Order 9066 has taught me many things. People never deserve second-class treatment and our rights, as Americans should never be compromised under any circumstances. Nearly 20,000 internees were held at Tulelake, and frequently demonstrated, demanding their rights under the United States Constitution. Rightfully so, as more than two-thirds of those interned were loyal American citizens.

This period of our American history is something many would like to forget, but let it serve as a constant reminder that we must be ever vigilant against nativist hysteria. My thoughts are with you. Enjoy your return to California.

Sincerely,


JOE SERNA, JR.
Mayor

TULELAKE REUNION VI
MAY 14 TO 16, 1998
DOUBLETREE HOTEL • SACRAMENTO

Schedule of Events

Thursday, May 14

2:00 P.M. to 8:00 P.M.

Reunion Registration, Hotel Lobby

Friday, May 15

7:45 A.M.

Assemble Doubletree Hotel Lobby for Pilgrimage

8:00 A.M.

Buses (2) leave hotel for Tulelake Campsite

Saturday, May 16th

10:00 A.M. to 5:00 P.M.

Reunion Registration, Hotel Lobby

10:00 A.M. to 5:00 P.M.

Exhibit, Sacramento Room

2:00 P.M. to 3:00 P.M.

Symposium: Film on "Health of Evacuees,"

"Children of the Camps," Capital Ballroom, Salon C

3:00 P.M. to 4:00 P.M.

Symposium: JA Music History, "Reminiscing in Springtime,"

Capitol Ballroom, Salon C

5:00 P.M.

Pilgrimage buses return to hotel

7:00 P.M.

No Host Cocktails, Grand Ballroom

8:00 P.M.

Mixer (Buffet), Grand Ballroom

12 Midnight

Mixer ends

Sunday, May 17th

7:00 A.M. to 10:00 A.M.

Coffee/Pastries, Rubicon River, Folsom Wing

7:00 A.M. to 5:00 P.M.

Reunion Registration, Hotel Lobby

7:45 A.M.

Assemble Hotel Lobby for Reno Trip

8:00 A.M.

Buses (2) leave for Reno

8:45 A.M.

Assemble Hotel Lobby for City Tour

9:00 A.M.

Bus leaves for City Tour

10:00 A.M. to 5:00 P.M.

Exhibit, Sacramento Room

9:30 A.M.

Golfers to assemble Hotel Lobby

10:00 A.M.

Transportation to the Golf Course

1:00 P.M. to 3:00 P.M.

Panel on Redress, California Ballroom, Salon 2, 3 & 4

3:00 P.M.

Photo Session (California Ballroom), Salon 1

5:00 P.M.

Reno and City Tour Buses return

7:00 P.M.

No Host Cocktails, Grand Ballroom

8:00 P.M.

Dinner, Grand Ballroom

12 Midnight

Dinner ends

SAYONARA

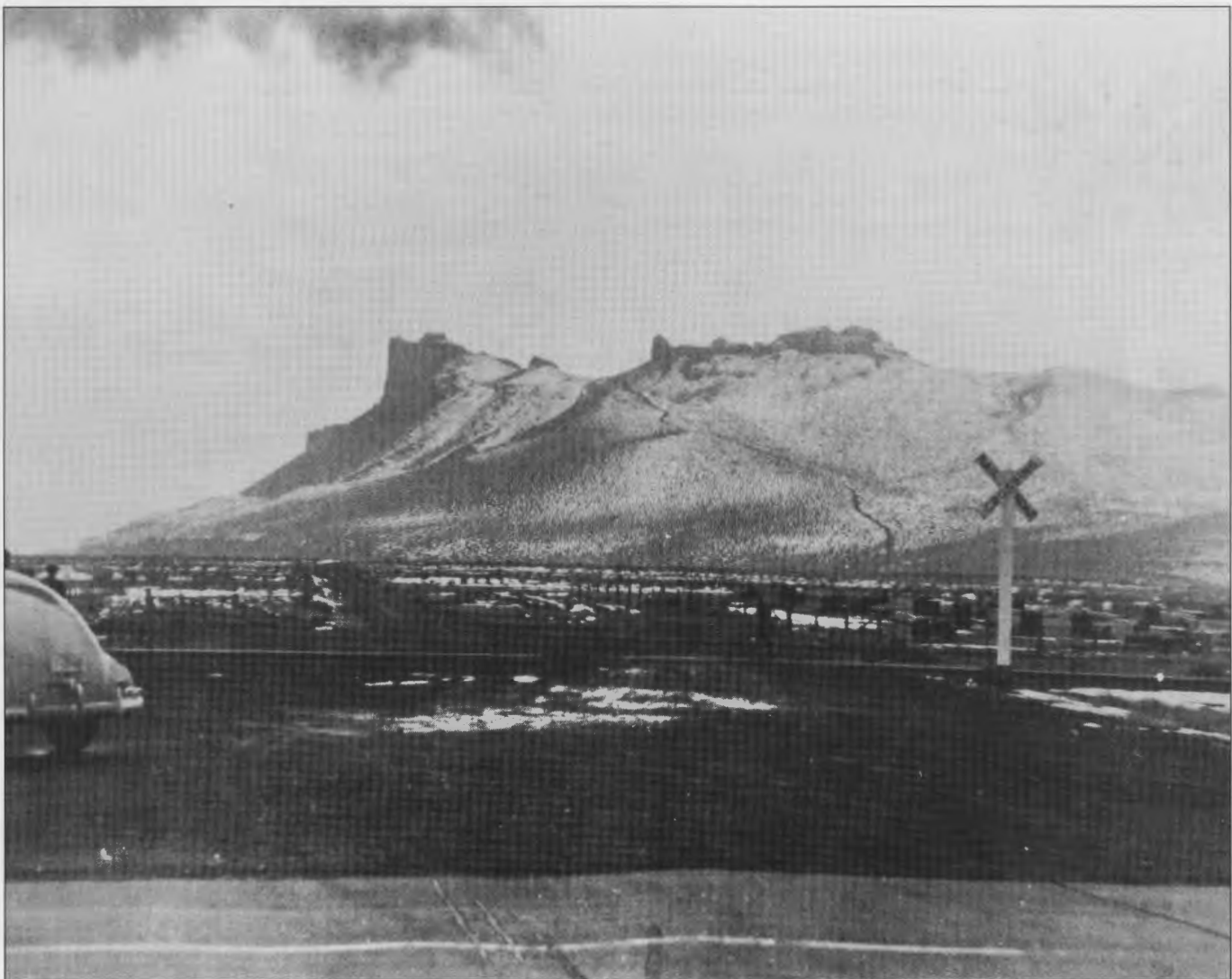
MEMORY BOOKLET

Everyone buying a complete package is entitled to a photo in the Memory Booklet. The Memory Booklet is also included in the registration package and will be mailed within sixty (60) days. Those not buying the full package may be included in the photo taking and the Memory Booklet by paying a \$10.00 fee.

PHOTO SCHEDULE: 3:00 p.m. - A to K
4:00 p.m. - L to R
5:00 p.m. - S to Z

Photos will be taken in the California Ballroom, Salon 1.

SPECIAL NOTE: *It is suggested that your attire during photo session be dressy so that your photos will be of the quality that you can order for your family and friends.*



CASTLE ROCK

The Tulelake Reunion Committee is proud to present three outstanding symposiums for the enjoyment and education of those attending this gathering and their friends and guests.



DR. GWEN M. JENSEN

Symposium No. 1

SATURDAY, MAY 16, 1998 • 2:00 P.M.

Capital Ballroom Salon C

"THE EXPERIENCE OF INJUSTICE: HEALTH CONSEQUENCES OF THE JAPANESE AMERICAN INTERNMENT" "CHILDREN OF THE CAMPS"

Dr. Gwen M. Jensen, a medical anthropologist and oral historian, will speak on some of the unsuspected consequences of incarceration.

I originally thought that the stress of such a deep and lengthy injustice could have long-term effects on people's health. I didn't realize what a profound effect it had," said Jensen.

Focusing on second generation Japanese Americans, Dr. Jensen found there significant long term effects on the health of those who were evacuated and incarcerated.

The second half of Symposium No. 1 will be narrated by Dr. Satsuki Ina, Professor in Marriage, Family, Child Counseling Program at California State University Sacramento. Her research and clinical work has focused on examining the impact of racism on mental health.

She is currently completing her work on the documentary "Children of the Camps," a film which captures the lives of six individuals who were children during the internment, exploring the ways in which they have coped with this traumatic early childhood experience.



DR. SATSUKI INA



GEORGE YOSHIDA

Symposium No. 2

SATURDAY, MAY 16, 1998 • 3:00 P.M.

Capital Ballroom Salon C

"REMINISCING IN SWINGTIME: A HISTORICAL REVIEW OF NIKKEI IN POPULAR AMERICAN MUSIC, 1915-1960"

This slide/lecture will cover a fascinating, untold story of the vigor of Nisei music makers whose commonality embraced the love of swing music and jazz. Basically, it will review the activity of prewar dance bands on the West Coast, the rise of Nisei musicians and vocalists in the development of jazz in prewar Japan, the spontaneous presence of dance bands in wartime detention camps, and professionals in the post war music scene.

George Yoshida, the presenter, is the leader of the well known J-Town Jazz Ensemble of the San Francisco Bay Area. He is a retired educator and founder of the Nikkei Music history Project of the NJAHS. He has authored the very comprehensive book, *Reminiscing in Swingtime*.

Symposium No. 3

SUNDAY, MAY 17, 1998 • 1:00 P.M.

California Ballroom Salons 2, 3 & 4

"REDRESS: A PROMISE FULFILLED"

With the curtains closing on the payment program of "Civil Rights Act of 1988" due to be completed in August of this year, the Tulelake Reunion organizing committee felt it would be a good time to review the history of the Redress & Reparation effort by those who contributed a tremendous amount of time and dedicated work to make this come true.

We tried to fill the panel with leaders who represent different segments of the historical battle to bring the impossible dream to fruition—against all odds.

The list of panelists:

Robert T. Matsui

Since being elected to Congress in 1978, Robert T. Matsui has gained a national and international reputation as a leader on far-reaching and complex public policy issues such as trade, tax policy, social security, health care and welfare reform.

Congressman Matsui's legislative accomplishments have been recognized by both local and national organizations. He was twice named "Congressional Advocate of the Year," in 1992 and 1994, by the Child Welfare League of America. The Children's Defense Fund honored Congressman Matsui in 1993. In 1992, he received the Excellence in Public Service Award from the American Academy of Pediatrics. Also in 1992, Congressman Matsui was recognized by the American Public Transit Association for his success in promoting mass transit. He was named one of California's outstanding legislators by Claremont College in 1990 and 1992. Congressman Matsui also has been honored with the "Lifetime Achievement Award" from the Anti-Defamation League.

Congressman Matsui's leadership was invaluable in the passage of "The Civil Rights Bill of 1988."

Congressman Matsui is a graduate of the University of California at Berkeley and Hastings College of the Law. He is married to the former Doris Okada, who is Deputy Assistant to the President and Deputy Director of Public Affairs for President Clinton. Congressman and Mrs. Matsui have one son, Brian, a law student at Stanford University.



ROBERT T. MATSUI



JERRY J. ENOMOTO

Jerry J. Enomoto

is the first Asian American to be appointed as a United States Marshal in 1994 by President Clinton.

During his prior 28 year career with the California Department of Corrections, he was the first Asian American to serve as prison warden and, later, as Director of Corrections, was the first Asian to manage a State Department in California.

Two time past National President of the Japanese American Citizens League (JACL), Chair of the JACL Legislative Education Committee, with a forty year history of JACL leadership at local, state and national levels. He received the "Japanese American of the Biennium" award in 1994.

Married to Dorothy Stevens, retired Deputy Director of the California Department of Corrections, with two daughters and three grandsons who live in Southern California.

William M. Marutani

was interned at the Tulelake camp for a period of 6 months before being released to go to school in Iowa.

He graduated from Chicago Law School in 1954 and was admitted to Pennsylvania Bar in 1954. In 1975, he was appointed to Pennsylvania state trial judgeship.

He was appointed by President Carter as one of nine members to the Commission on Wartime Relocation and Internment of Civilians. The Commission issued a report in 1982 on the causes of the uprooting and incarceration of Japanese Americans and their parents in 1942, and recommended remedies.

He is now in private practice in Philadelphia.



WILLIAM M. MARUTANI



NORMAN Y. MINETA

Norman Y. Mineta

as a congressman during the fight to pass the "Civil Rights Act of 1988," was a tireless and a most important cog in the machinery which worked tirelessly and with zeal to make the passage of the historic bill a reality.

Norman Y. Mineta is Senior Vice President and Managing Director for Transportation Systems and Services at Lockheed Martin IMS. Prior to joining Lockheed Martin in 1995, Mineta had served in the United States House of Representatives since 1975, representing California's 15th Congressional District in the heart of Silicon Valley.

A native of San Jose, California, Mineta was one of the 120,000 Americans of Japanese ancestry forced into internment camps by the United States Government during the Second World War. During the 1090th Congress, Mineta was the driving force behind passage of H.R. 442, the Civil Liberties Act of 1988, which officially apologized for and redressed the injustices endured by Japanese Americans during the War. In 1995, Mineta was awarded the Martin Luther King, Jr. Commemorative Medal by George Washington University for his contributions to the field of civil rights.

Mineta is married to Danealia Mineta. He has two sons, David and Stuart Mineta, and two step-sons, Robert and Mark Brantner.

John Tateishi

was born in 1939 in Los Angeles. At the outbreak of World War II, he and his family were among the 120,000 Japanese Americans excluded from the West Coast and imprisoned in U.S. detention camps. Following the end of the war, he attended public schools in Los Angeles and received his BA in literature from the University of California at Berkeley. He specialized in Modern American Literature in his post-graduate work at the University of California at Davis.

He began a teaching career at the University of London, England, where he lived for three years, followed by ten years as an English instructor at the City College of San Francisco. It was while he was still at CCSF that he was called on as a volunteer in 1978 to launch a national campaign to seek redress for the WWII internment. He served for three years as the chairperson for the national Redress Committee of the Japanese American Citizens League (JACL). In 1981, he resigned his City College faculty tenure to become the JACL's National Redress Director, a full-time staff position.

He resigned his position as the National Redress Director in 1986 to pursue his current career. He is the author of *And Justice for All* (Random House), an oral history of the WWII internment, which will be re-released by University of Washington Press in the Spring 1999. He maintains a residence in Marin County, California.



JOHN TATEISHI



CLIFFORD I. UYEDA

Clifford I. Uyeda

was born in Tacoma, Washington and finished high school in that city. He received his B.A. from the University of Wisconsin and his M.D. from Tulane University in New Orleans.

As National JACL National Redress Chairman from 1977-78 and as National JACL president from 1978-79, Dr. Uyeda was a driving force in the fight to accept the concept of redress and reparations for the Japanese American evacuees.

He was president of National Japanese American Historical Society from 1988 to 1994.



GRAYCE K. UYEHARA

Grayce K. Uyehara was born in Stockton, California. As an active member of JACL since 1946, she held the offices of National Vice President and Governor of the Eastern District Council, where she contributed to the organization's aim of educating all Americans about the contributions of the Japanese Americans to American history and society.

As the Executive Director of the JACL Legislative Education Committee, she lobbied Capitol Hill to fight for recognition of the suffering of Japanese Americans who had been interned in relocation camps during World War II. Her relentless efforts and devotion to this campaign for an apology and compensation from the U.S. Government for each internee culminated in JACL's victory as the bill was signed into law by then President Ronald Reagan on August 10, 1988.

Priscilla Ouchida has been with the California State Legislature since 1976 and has been in Senator Patrick Johnston's office for 18 years. She worked with Senator Johnston on the passage of the 1982 legislation to provide back pay to state employees of Japanese ancestry who were fired in 1942, and on legislation to exempt federal redress payments from state income taxation.

She has been a two-year term Vice President of Operations for National JACL and is credited with revitalizing the Sacramento Chapter of the JACL to the current nationally recognized chapter with a thousand members.



PRISCILLA OUCHIDA



HARRY K. FUKUHARA

Harry K. Fukuhara was born January 1, 1920 in Seattle, Washington.

In May 1942, together with other Japanese Americans living on the West Coast, he was interned in detention camps in California and Arizona. In November 1942, he volunteered from Gila River internment camp in Arizona and joined the U.S. Army. On December 1, 1942, he attended the Military Intelligence Service Language School at Camp Savage, Maine for Japanese language training.

Harry served 29 years in Army Intelligence and retired as a Colonel in October 1971. While on active duty he served with the 441st CIC Det. and 500th M.E. Gp. in Japan, and the 115th CIC Det. in San Francisco and the 109th Intl. Gp. at Ft. Meade. In November 1971, he became a Department of the Army Civilian and served with the 500th M.I. Bde. in Japan until his retirement in October 1990, ending a 48-year career with the United States Army. Harry now enjoys full retirement, with his wife Terry, at their home in San Jose, California.

TULELAKE REUNION VI COMMITTEE



Seated: Sally Yamaichi, April Adach, Toyo Nakatogawa, Kay Kato, Jean Yego, Eiko Kurimoto, Alice Yagi, Evelyn Akiyama, Ruby Matsuhara, Teiko Matsuo, Terry Kagiya; **Standing:** Ralph Sugimoto, Toko Fujii, Tom Okubo, Howard Matsuhara, Tim Yoshimiya, Riichi Fuwa, Gene Itogawa, Jack Akiyama, Rose Hironaka, Kuni Hironaka, Yoshiko Sanbongi, Blackie Mayeda, Tessie Goi, Kanji Nishijima, George Makimoto, Yosh Ishihara.



TULELAKE REUNION VI COMMITTEE

May 16 and 17, 1998

**Doubletree Hotel
Sacramento, California**

Booklet: Diane Suzuki, Toko Fujii

City Tour: April Adachi, Sally Yamaichi

Computer Support: Yosh Ishihara

Dinner: Ruby Matsuhara, Toko Fujii

Exhibit: Gene Itogawa, Riichi Fuwa, Tim Yoshimiya

Golf: Ralph Sugimoto, Blackie Maeda, Chewy Ito

Hospitality: Tom and Amie Fujimoto

Mixer: Kuni and Rose Hironaka, Tessie Goi

Out of Town Coordinator: Deki Seto

Photo Album: Toko Fujii

Pilgrimage: Gene Itogawa and Riichi Fuwa

Printing and Tickets: Howard Matsuhara

Publicity: Mary Fong

Registration: Joe and Alice Kataoka

Registration Desk: Alice Yagi, Evelyn and Jack Akiyama, Kaye Kato
Machiko Kimura, Eiko Kurimoto, Yoshiko Sanbongi

Reno Tour: Terry Kagiya, Teiko Matsuo, Mary Tsugawa

Secretary: Jean Yego

Souvenirs: George Makimoto, Kanji Nishijima, Jack Yokote

Treasurer: Toyoko Nakatogawa

Workshop Programs: Toko Fujii

Event Coordinator: Toko Fujii

SPECIAL THANKS TO...

California State University Sacramento Archives
National Japanese American Historical Society
Japanese American National Museum
University of California Davis Asian Studies
Sacramento Convention and Visitors Bureau
Ted Kobata – Construction of Exhibit Panels

Georgiana White
George Yoshida
Ike Hachimonji
Dr. Isao Fujimoto



WINTER SCENE



CAMP AND ABALONE HILL



TULELAKE JUDO CLUB



DR. MASAMICHI SUZUKI, DR. HENRY SUGIYAMA, UNIDENTIFIED, DR. G. AKAMATSU, MRS. AKAMATSU



MEMBERS OF THE HOSPITAL STAFF



HOSPITAL DENTAL STAFF

Front Row (l-r): Dr. Milton Honda, Dr. Joe Kawahara, Dr. George Muramoto, Dr. Tomejiro Sato, Dr. Uichi Sagami. *Back Row (l-r):* Dr. Yoshizo Harada, Dr. Tetsuo Sugahiro, Dr. Kiyoshi Tsuda, Dr. Akio Hayashi, Dr. Johnny Nakahara, Dr. Koki Kumamoto.



BANK OF AMERICA - TULELAKE



SHOE REPAIR SHOP



MOTOR POOL - JANUARY 1943



BARBER SHOP



TULELAKE CENTER LIMITS



BLOCK MANAGER'S MEETING - JANUARY 9, 1946



FARM POTATO PLANTING



PACKING SHED - 1942



ART CLASS



HARVEST FESTIVAL - OCTOBER 31



HOSHIDAN GROUP



GYMNASIUM FIRE - DECEMBER 31, 1945

LIST OF REGISTRANTS

ABE, Sadako Betty (Hamamoto) - Sacramento, CA
 ABE, June - Aurora, CO
 AJIMA, Henry - Cypress, CA
 AKIYAMA, Jack - Sacramento, CA
 AKIYAMA, Evelyn (Takagi) - Sacramento, CA
 AKIYAMA, Toshiko (Nasu) - Sacramento, CA
 AKIZUKI, Sumie (Suguro) - Mercer Island, WA
 AMEMIYA, Hodge H. - Torrance, CA
 AMEMIYA, May C. (Taketaya) - Torrance, CA
 AOKI, George - Woodland, CA
 AOKI, Sakaye (Ishihara) - Woodland, CA
 AOYAMA, Mary (Morimoto) - Bellevue, WA
 ARAI, May M. (Sato) - Sacramento, CA
 ARAI, Hiroto - Richmond, CA
 ARIMA, Maria Y. (Yamanishi) - Silverdale, WA
 ASAMOTO, Hazel (Tanaka) - Cleveland, OH
 ASANO, Akira - Princeton, NJ
 ASANO, Shinobu (Yamamoto) - Princeton, NJ
 CATLIN, Machiko (Sasaki) - Nashville, TN
 CHANG, Bess Teru (Sonoda) - Honolulu, HI
 CHIKAMI, Joyce (Tsujiimichi) - Reno, NV
 CHIKAMI, Frank - Reno, NV
 DAVIDSON, William - North Wales, PA
 DAVIDSON, Mary (Matsuoka) - North Wales, PA
 DEGUCHI, Mae (Suguro) - Seattle, WA
 EBIHARA, Aiko (Tanaka) - Oberlin, OH
 ENDO, Frederick Y. - Kawaguchi-Shi, Japan
 ENOMOTO, Jerry - Sacramento, CA
 ENOMOTO, Dorothy - Sacramento, CA
 ERICKSON, Frances F. - San Mateo, CA
 FONG, Mary (Kawano) - Sacramento, CA
 FOSTER, Elaine - Yorba Linda, CA
 FUJII, Mort - Northridge, CA
 FUJII, Marianne (Matsuo) - Northridge, CA
 FUJII, Masuto - Sacramento, CA
 FUJII, Grace Y. (Nakano) - Sacramento, CA
 FUJII, Fred - Kildeer, IL
 FUJII, Marion I. (Isono) - Kildeer, IL
 FUJII, Toko - Sacramento, CA
 FUJII, Sayoko (Akune) - Sacramento, CA
 FUJII, Toshio - Lomita, CA
 FUJII, Sally (Tanaka) - Lomita, CA
 FUJIMOTO, Hiroshi - West Bloomfield, MI
 FUJIMOTO, Christine - West Bloomfield, MI
 FUJIMOTO, Yaeko Rhea (Yamanishi) - Las Vegas, NV
 FUJIMOTO, Tom - Sacramento, CA
 FUJIMOTO, Amie (Takahashi) - Sacramento, CA
 FUJIMURA, Shizuko R. (Yamamoto) - Gardena, CA
 FUJIOKA, Mollie T. (Yasutake) - Walnut Creek, CA
 FUJISHIN, Kay K. - Sunnyvale, CA
 FUJISHIN, Betty (Takayama) - Sunnyvale, CA
 FUJITA, Kats (Hashimoto) - Tacoma, WA
 FUJITANI, Frank K. - Hayward, CA
 FUJITANI, Kay Katsuko (Uyehara) - Hayward, CA
 FUJITANI, James S. - San Francisco, CA
 FUKAMI, Frank - Prospect Heights, IL
 FUKAWA, Koji - La Mirada, CA
 FUKAWA, Kazumi (Uwate) - La Mirada, CA
 FUKIAGE, Mitzie T. (Tanaka) - Van Nuys, CA
 FUKUDA, Joseph - Sacramento, CA
 FUKUDA, Masako - Sacramento, CA
 FUKUMOTO, Carole (Nishikawa) - Dixon, CA
 FURUMASU, Fujie (Uyetake) - Greenacres, WA
 FUWA, Riichi - Sacramento, CA
 GALLASPY, Harriettea H. - San Mateo, CA
 GLASCOCK, Katherine Hisako (Fukami) - N. Hollywood, CA
 GLASCOCK, Baylis - N. Hollywood, CA
 GURO, Bob - Sacramento, CA
 GURO, Carolyn (Muraoka) - Sacramento, CA
 HAMAI, George - Sacramento, CA
 HAMAI, Sadie (Hori) - Sacramento, CA
 HARA, Calvin Koichi - Santa Clara, CA
 HARA, Nikki (Nakano) - Ballwin, Mo
 HARA, Tom T. - Sacramento, CA
 HARA, Lona K. (Murata) - Santa Clara, CA
 HARA, John Dr. - Ballwin, MO
 HARADA, George T. - Monterey Park, CA
 HARADA, Tsutayo (Ryono) - Monterey Park, CA
 HARADA, Dan - Berkeley, CA
 HARADA, Mary - Berkeley, CA
 HASHIMOTO, Edith (Nakano) - San Jose, CA
 HATAMIYA, Frank I. - Live Oak, CA
 HATANO, Mas - Sacramento, CA
 HATANO, Violet - Sacramento, CA
 HAYASHIDA, Jack - Loomis, CA
 HAYASHIDA, Marie (Matsumoto) - Loomis, CA
 HAYASHIDA, Bob - Loomis, CA
 HAYASHIDA, Grace - Loomis, CA
 HAYASHIDA, JoAnne (Kido) - San Pablo, CA
 HAYES, ElaineI. (Ishikawa) - Seattle, WA
 HIGASHIHARA, Fumio - San Jose, CA
 HIGASHIHARA, Lorraine (Takayama) - San Jose, CA
 HIRAGA, George M. - San Jose, CA
 HIRAGA, Kei - Sanger, CA
 HIRAHARA, Sumiye E (Kaiharu) - Shingle Spring, CA
 HIRAI, Shigeko (Iseri) - Chewelah, WA
 HIRAI, Martha (Fujikawa) - Mattawa, WA
 HIRAI, Charley - Mattawa, WA
 HIROMOTO, Mary (Mori) - Walnut Creek, CA
 HIRONAKA, Rose (Asoo) - Sacramento, CA
 HIRONAKA, Kuni - Sacramento, CA
 HITOMI, Russell - Chino Hills, CA
 HIUGA, Mika (Asai) - Ontario, OR
 HONDA, Harry - Monterey Park, CA
 HONDA, Taka - Whittier, CA
 HONDA, Haru (Uno) - Whittier, CA
 Horiguchi, Bruce - Gardena, CA
 Horiguchi, Chiye (Takahashi) - Gardena, CA
 HYOGO, Thelma - Cypress, CA
 HYOSAKA, Ernest - Chicago, IL
 HYOSAKA, Yvonne (Tanuguchi) - Chicago, IL
 HYOSAKA, Ken - Los Angeles, CA

HYOSAKA, Fumi (Shimizu) - Los Angeles, CA
 IGUCHI, Mariko (Morioka) - Torrance, CA
 IIDA, Ted - Sylmar, CA
 IIDA, Chieko (Fukawa) - Sylmar, CA
 IKEDA, Ruth (Tenma) - Penryn, CA
 IKEDA, Mitsugi - Penryn, CA
 IKEDA, Frank K. - Sloughhouse, CA
 INUKAI, Harry - Hood River, OR
 IRIYAMA, Masao - Westminster, CA
 IROKAWA, Sakae - Sacramento, CA
 IROKAWA, Gladys - Sacramento, CA
 ISERI, Minnie Y. - Sacramento, CA
 ISHIDA, Nobu - Portland, OR
 ISHIDA, Takako (Takahashi) - Portland, OR
 ISHIDA, Ben T. - Portland, OR
 ISHIDA, Sumie (Yamamoto) - Portland, OR
 ISHIHARA, Teruo "Terry" - Sedona, AZ
 ISHIHARA, Joey - Sacramento, CA
 ISHIHARA, Yosh - Sacramento, CA
 ISHIHARA, Fumie O. (Ota) - Sacramento, CA
 ISHII, Edward K. - Sacramento, CA
 ISHII, Yuriko K. (Kumamoto) - Sacramento, CA
 ISHII, Marion K. - Chicago, IL
 ISHIKAWA, Jean Y. - New York City, NY
 ISHIMA, Amy (Sakuma) - Sacramento, CA
 ISHIMOTO, Norman M. - Torrance, CA
 ISHIMOTO, Sady (Okuda) - Torrance, CA
 ITANO, Harvey - La Jolla, CA
 ITO, Paul - Sacramento, CA
 ITO, Shizue (Matsuura) - Sacramento, CA
 ITOGAWA, Eugene - Sacramento, CA
 ITOGAWA, Jane (Hashisaka) - Sacramento, CA
 IWASAKI, Yoshio - Los Angeles, CA
 IWASAKI, Min - Los Angeles, CA
 IWASAKI, Kazie (Hashiguchi) - Los Angeles, CA
 JOHNSON, Ayako (Toki) - Seattle, WA
 KADANI, Kiyoko Ko (Shibasaki) - Monterey, CA
 KADANI, Otis - Monterey, CA
 KAGIYAMA, Atsushi 'Angel' - Sacramento, CA
 KAGIYAMA, Teruko Terry (Enkoji) - Sacramento, CA
 KAIHARA, Thomas K. - Chicago, IL
 KAIHARA, Lynn A. (Yanokawa) - Chicago, IL
 KAIHARA, Rusty 'Kaz' - Elk Grove, CA
 KAIHARA, Clara (Kuroko) - Elk Grove, CA
 KAJITA, Sutter - St. Charles, IL
 KAKUDO, Mac (Mako) - Northridge, CA
 KAKUDO, Shizuco Suzie (Yamanaka) - Northridge, CA
 KAMBARA, George - Los Angeles, CA
 KAMBARA, May F. (Tanaka) - Los Angeles, CA
 KAMIKAWA, Joe - San Francisco, CA
 KAMIKAWA, Miyeko (Yoshimoto) - San Francisco, CA
 KANAI, Grace S. (Asoo) - Sacramento, CA
 KANAI, Sam T. - Sacramento, CA
 KANDA, Miyo (Abe) - Tacoma, WA
 KASHIWABARA, Tom T. - Sacramento, CA
 KASHIWABARA, Mary Y. (Miyamoto) - Sacramento, CA

KASHIWABARA, Ken - Penryn, CA
 KASHIWABARA, John E. - Long Beach, CA
 KASHIWADA, Harry - Sacramento, CA
 KASHIWADA, Kazue (Guro) - Sacramento, CA
 KASHIWAGI, Hiroshi - San Francisco, CA
 KASHIWAGI, Sadako (Nimura) - San Francisco, CA
 KASHIWAGI, Lillian (Asoo) - Sacramento, CA
 KASHIWAGI, Robert - Sacramento, CA
 KASHIWAGI, Isamu Sam - Sacramento, CA
 KASHIWAGI, Bette Sue (Fujimoto) - Sacramento, CA
 KATAOKA, Joe - Sacramento, CA
 KATAOKA, Alice (Takeda) - Sacramento, CA
 KATAYAMA, Mary K. (Fujioka) - Seattle, WA
 KATAYAMA, Tak - Seattle, WA
 KATO, Tak R. - Sacramento, CA
 KATO, Hiro - Sacramento, CA
 KATO, Ray - Monterey Park, CA
 KATO, Mary (Morimoto) - Monterey Park, CA
 KATO, Jiro - Albany, CA
 KATO, Kiyo (Kajita) - Albany, CA
 KATO, Mitsi (Nishimura) - Berkeley, CA
 KATO, Kazuo - Berkeley, CA
 KATO, Kaye K. (Fujii) - Sacramento, CA
 KATO, Kiyoshi - Sacramento, CA
 KAWADA, William K. - Sacramento, CA
 KEIMI, Barbara Reiko (Mikami) - Monterey Park, CA
 KEIMI, Harold - Monterey Park, CA
 KELLOM, Lily (Hyogo) - Carson City, NV
 KIDO, Marie - San Pablo, CA
 KIHARA, Matsuko (Shimada) - Sacramento, CA
 KIHARA, Shigeyoshi - Sacramento, CA
 KIMURA, Machiko - Sacramento, CA
 KIMURA, Utako - Sacramento, CA
 KIMURA, Kazuo C. - Sacramento, CA
 KIMURA, Molly (Nakamura) - Sacramento, CA
 KINO, Shoji - Renton, WA
 KINO, Shirley (Iwasaki) - Renton, WA
 KINOSHITA, George - Ojai, CA
 KINOSHITA, Susan S. (Otsuka) - Ojai, CA
 KINOSHITA, Amy (Sato) - Seattle, WA
 KINOSHITA, Chuck - Seattle, WA
 KITAZUMI, Cal - San Francisco, CA
 KITAZUMI, Betty - San Francisco, CA
 KIYAMA, Jimmie - Sacramento, CA
 KIYAMA, Tony - Sacramento, CA
 KOBAYASHI, Kiyomi (Kanegawa) - Gardena, CA
 KOBAYASHI, George - Gardena, CA
 KOBAYASHI, John M. - Lawndale, CA
 KOBAYASHI, Masako (Kitajima) - Lawndale, CA
 KOGA, Sumio Rev. - Watsonville, CA
 KOGA, Dalas (Okawaki) - Watsonville, CA
 KOHAGURA, Etsuko (Mikawa) - Roseville, CA
 KOMATSUBARA, Lorraine (Yokotobi) - Yuba City, CA
 KOMURA, Fudge (Amemiya) - Torrance, CA
 KONDO, Aster - Loomis, CA
 KONDO, Sadame (Kageta) - Loomis, CA

KONO, Tom - San Francisco, CA
 KOZONO, Ard - W. Sacramento, CA
 KOZONO, Mary (Nitta) - W. Sacramento, CA
 KUBOTA, Barney - Sacramento, CA
 KUBOTA, Nami (Kinoshita) - Sacramento, CA
 KUNIBE, Alice - Sacramento, CA
 KUNIHARA, Fimiko (Ikeda) - San Francisco, CA
 KUNISHI, Michiko - Sacramento, CA
 KURAHARA, Janus - Hood River, OR
 KURIMOTO, Eiko (Yoshida) - Sacramento, CA
 KURITANI, Kumiko (Hashimoto) - Los Angeles, CA
 KUSABA, Aiko O. (Outa) - Culver City, CA
 KUSABA, Mike - Culver City, CA
 KUSHI, Tom - Sacramento, CA
 KUSHI, Frances - Sacramento, CA
 KUSHIDA, Aki - Sacramento, CA
 KUSHIDA, Lillian (Tanihana) - Sacramento, CA
 KUWADA, Hank - El Cerrito, CA
 KUWADA, Amy (Okimoto) - El Cerrito, CA
 KUWANO, Fujio - San Jose, CA
 KUWANO, Ruby (Ono) - San Jose, CA
 KYLE, Mary (Nakamura) - San Jose, CA
 KYONO, Mas - Oakland, CA
 KYONO, Patricia May (Kitazumi) - Oakland, CA
 LEY, Harry P. - Sacramento, CA
 LI, Florence H. (Yamada) - Denver, CO
 MACHIDA, Roy C. M. D. - Los Angeles, CA
 MACHIDA, Fumy (Ebihara) - Los Angeles, CA
 MAEDA, Kikue Kay (Hishinuma) - Ontario, OR
 MAEDA, Blackie Sam - Rocklin, CA
 MAEDA, Haru - Rocklin, CA
 MAEYAMA, Kaoru Kay (Matsuno) - San Francisco, CA
 MAEYAMA, Jun - San Francisco, CA
 MAKIMOTO, George - Loomis, CA
 MAKIMOTO, Mitsue (Nakanishi) - Loomis, CA
 MAKINO, Masayo (Uchiyama) - San Gabriel, CA
 MAKINO, Jim - San Gabriel, CA
 MAKISHIMA, Tsugi S. (Sumihiro) - Sacramento, CA
 MARUTANI, William - Media, PA
 MASAOKI, Amy - Sacramento, CA
 MASAOKI, Akito - Sacramento, CA
 MASAOKI, Amy E. (Yamada) - Sacramento, CA
 MASUDA, Tom - San Jose, CA
 MASUDA, Helen (Fujishin) - San Jose, CA
 MATSUBARA, Katie (Yamamoto) - Richmond, CA
 MATSUDA, Sakaye - Ridgecrest, CA
 MATSUDA, Nana (Matsuno) - Ridgecrest, CA
 MATSUFUJI, Riki - Oxford, MS
 MATSUFUJI, Reba (Hill) - Oxford, MS
 MATSUHARA, Howard - Sacramento, CA
 MATSUHARA, Ruby (Masuda) - Sacramento, CA
 MATSUMOTO, Helen (Horio) - Sunnyvale, CA
 MATSUMOTO, Amy E. (Ikeda) - Sacramento, CA
 MATSUMURA, Arthur A. - Detroit, MI
 MATSUO, Teiko (Ishihara) - Sacramento, CA
 MATSUSHITA, Reiko (Mikawa) - Sacramento, CA

MAYEDA, Teruo Ted - Oakland, CA
 MAYEDA, Asako (Horimoto) - Oakland, CA
 MAYEDA, Bryan - Sacramento, CA
 MAYEDA, May (Mizobe) - Sacramento, CA
 MAYEDA, Henry - Fresno, CA
 MENDA, Mas - Chicago, IL
 MINEMOTO, Ruby (Shibasaki) - San Francisco, CA
 MINEMOTO, Robert - San Francisco, CA
 MITOMA, Chozo - Palo Alto, CA
 MITOMA, Fusa (Inouye) - Palo Alto, CA
 MITSUI, Sam M. - Renton, WA
 MITSUI, Tami (Inaba) - Renton, WA
 MIYAHARA, Ben - Denver, CO
 MIYAHARA, Peter - Denver, CO
 MIYAHARA, Kiyoko (Mano) - Seattle, WA
 MIYAKE, Sue Hisako (Tokirio) - Chicago, IL
 MIYAKE, Abe - Chicago, IL
 MIYAKE, George C. - Seattle, WA
 MIYAMURA, Martha (Endo) - Penryn, CA
 MIYAMURA, Grace (Sakai) - Sacramento, CA
 MIYOSHI, Chieko (Hashiguchi) - San Francisco, CA
 MIYOSHI, Kaneo - San Francisco, CA
 MOCHIZUKI, Min - Denver, CO
 MOCHIZUKI, June (Suzuki) - Denver, CO
 MORI, Perry T. - Albuquerque, NM
 MORI, Chiyo S. (Sato) - Albuquerque, NM
 MORINAKA, Anna H. (Takayama) - Mountain View, CA
 MORINAKA, Uta Henry - Mountain View, CA
 MORITA, Gloria (Tamura) - El Cerrito, CA
 MOTOMATSU, Nancy R. - Olympia, WA
 MOTOMATSU, Toshiko (Shibasaki) - Olympia, WA
 MOTONARI, Gail - San Francisco, CA
 MUKAI, Sadako (Yamamoto) - Huntington Beach, CA
 MUKAI, Toru - Huntington Beach, CA
 MUNEKATA, Sachiko - Los Angeles, CA
 MURAKAMI, Susanna Yo (One) - Sacramento, CA
 MURAOKA, Roy - Sacramento, CA
 MURAOKA, Tak - Sacramento, CA
 MURAOKA, Virginia (Yomogida) - Sacramento, CA
 MURATA, Yosh - Sacramento, CA
 MURATA, Alma - Sacramento, CA
 MYOSE, Alice (Nishimura) - Sacramento, CA
 NAGAO, Jeanne (Fujikawa) - Fresno, CA
 NAGAO, Hiro - Fresno, CA
 NAGASUGI, Mich - Glendale, CA
 NAGASUGI, Fumi (Nakamura) - Glendale, CA
 NAKAGAWA, Roy - Pleasanton, CA
 NAKAGAWA, Mary (Wada) - Pleasanton, CA
 NAKAGAWA, Bob - Clovis, CA
 NAKAHARA, Lucille Shigeo (Ogawa) - Sunland, CA
 NAKAHARA, Leland - Sunland, CA
 NAKAHARA, Dean - Sunland, CA
 NAKAHARA, Sue Suzuko (Hamamoto) - Sacramento, CA
 NAKAMURA, Harry I. - Sacramento, CA
 NAKAMURA, Yoshio - San Jose, CA
 NAKAMURA, Yasuko Dorothy (Iseri) - San Jose, CA

NAKAMURA, Jobo George R. - Torrance, CA
 NAKANISHI, Hiroshi Ray - Bellview, WA
 NAKANISHI, Chiyo - Bellview, WA
 NAKANISHI, Robert - San Mateo, CA
 NAKANISHI, Ted T. - Seattle, WA
 NAKANISHI, Kimiko (Mitsui) - Seattle, WA
 NAKANO, Yayoi Margaret (Nishikawa) - Atlanta, GA
 NAKAO, Sam - Niles, IL
 NAKAO, Tom - Kent, WA
 NAKAOKI, Jiro - Denver, CO
 NAKAOKI, Reiko - Denver, CO
 NAKASHIMA, Kazuo K. - San Bruno, CA
 NAKASHIMA, Takeko J. - San Bruno, CA
 NAKASHIMA, Jimmie - Lake Forest, CA
 NAKASHIMA, Tomiyo (Ryono) - Lake Forest, CA
 NAKATOGAWA, Dag - Sacramento, CA
 NAKATOGAWA, Toyoko Toyo - Sacramento, CA
 NAKAUCHI, Yosh - Morgan Hill, CA
 NAKAWAKI, Fushio - Placentia, CA
 NAKAWAKI, Yoshiko (Nomura) - Placentia, CA
 NAKAWAKI, Tad - Yorba Linda, CA
 NAKAWAKI, Kazuko - Yorba Linda, CA
 NAKAWATASE, Fred - Glendale, CA
 NAKAWATASE, Betty (Nakamura) - Glendale, CA
 NAKAYAMA, Sally Toki (Hamamoto) - Mountain View, CA
 NAMBA, Frank - Seattle, WA
 NAMBA, Michiko - Seattle, WA
 NAMBA, Kennie - Portland, OR
 NAMBA, Ruth (Inukai) - Portland, OR
 NAMBA, Jim - Sacramento, CA
 NARAHARA, Shig - Mission, TX
 NARAHARA, Mary (Kaneko) - Mission, TX
 NARASAKI, Ted T. - Citrus Heights, CA
 NISHI, Yoshie (Shijo) - Sacramento, CA
 NISHIHARA, Yoshio Richard - Oakland, CA
 NISHIHARA, Lillian Yuriko (Fukunaga) - Oakland, CA
 NISHIJIMA, Kanji - Sacramento, CA
 NISHIJIMA, Shizuye (Nakanishi) - Sacramento, CA
 NISHIKAWA, Yutaka - Davis, CA
 NISHIKAWA, Sakaye (Tenma) - Davis, CA
 NISHIMA, Frank - Los Angeles, CA
 NISHIMI, Ralph - Sacramento, CA
 NISHIMURA, George G. - Westtown, NY
 NISHIMURA, Mary (Kido) (Kunisaki) - Fresno, CA
 NISHIMURA, Ichiro 'Kint' - Sacramento, CA
 NISHIMURA, Hisako (Kimura) - Sacramento, CA
 NISHIMURA, Thomas - Sacramento, CA
 NISHIMURA, Judy - Sacramento, CA
 NISHINA, Yayeko (Kono) - Los Angeles, CA
 NISHINO, Greg - Ocean Park, MD
 NISHIOKA, Nancy (Doi) - Chicago, IL
 NISHIOKA, Arthur - Chicago, IL
 NITTA, Stan - Keyes, CA
 NITTA, Alice - Keyes, CA
 NITTA, Clarence - Warren, MI
 NITTA, Alfred - Loomis, CA

NITTA, Ellen M. (Igarashi) - Loomis, CA
 NOBUYE, Eleanor - Sacramento, CA
 NOGUCHI, Kinya - Sacramento, CA
 NOGUCHI, Helen S (Nakamura) - Sacramento, CA
 NOMURA, Nancy (Kido) - San Pablo, CA
 OGA, June (Manji) - Lodi, CA
 OGAWA, Mitzi - Moreno Valley, CA
 OGAWA, Mitzi - Moreno Valley, CA
 OHASHI, Mike M. - Seattle, WA
 OHASHI, Mae M. (Furukawa) - Seattle, WA
 OKADA, Shig - Westlake, OH
 OKADA, Mary M. (Machida) - Westlake, OH
 OKADA, Min - Sacramento, CA
 OKADA, Yori (Hosokawa) - Sacramento, CA
 OKADA, Ino - Albany, CA
 OKADA, Edward K. - Minneapolis, MN
 OKADA, Sara T. (Tanigawa) - Minneapolis, MN
 OKADA, Mitzi (Uyetake) - Los Altos, CA
 OKADA, Tosh - Los Altos, CA
 OKADA, Shag - Stanton, CA
 OKADA, Amy (Fujio) - Stanton, CA
 OKADA, Eugene - Sacramento, CA
 OKAMOTO, Saburo - Sacramento, CA
 OKAMOTO, Aiko (Takahashi) - Sacramento, CA
 OKASAKI, George M. - Elk Grove, CA
 OKASAKI, Ets (Sako) - Elk Grove, CA
 OKI, Tatemasu - Seattle, WA
 OKI, Ruth M. (Kobayashi) - Seattle, WA
 OKITA, Dorothy M. (Kaiharu) - Denver, CO
 OKUBO, Tom - Sacramento, CA
 OMURO, Bette (Shimizu) - Chicago, IL
 ONE, Dick - Palatine, IL
 ONE, May Satsuki (Hayashi) - Palatine, IL
 ONO, Toshio - So. San Francisco, CA
 ONO, Norma (Funakoshi) - So. San Francisco, CA
 ONWELLER, Robert E. - Albany, CA
 ONWELLER, Hideko J. (Togami) - Albany, CA
 ORITE, Ray - Sacramento, CA
 OSAKI, Wayne - San Francisco, CA
 OTA, Tsutomu T. - Sacramento, CA
 OTA, Jean - Sacramento, CA
 OTA, Mas - Sacramento, CA
 OTA, Yuki (Tateishi) - Sacramento, CA
 OTA, Robert Y. - Melbourne, FL
 OTA, Toshiko (Menda) - Melbourne, FL
 OTO, Edith - Oakland, CA
 OWADA, Saburo Sam - Lacey, WA
 OWADA, Miyoko Miki (Miyaoka) - Lacey, WA
 OWADA, John - Salt Lake City, UT
 OZAKI, Chiyeko (Togami) - Mount Vernon, WA
 PAIA, Takeko (Hayashida) - Elk Grove, CA
 PANSEIK, Teri D. (Ikeda) - Cameron Park, CA
 ROGER, Lillie (Yomogida) - Sacramento, CA
 ROLZ-BENEDICT, Yuriko Rolz (Baba) - San Francisco, CA
 RYUGO, Kiki - Sacramento, CA
 RYUGO, Grace - Sacramento, CA

SAKAMOTO, Akiye - Sacramento, CA
 SAKATA, Robert M. - Clarksburg, CA
 SAKATA, Shizuko (Kiyama) - Clarksburg, CA
 SAKO, Grace Kazuye (Fujihara) - San Jose, CA
 SAKODA, George T. - Baldwin Park, CA
 SAKODA, May (Nakatogawa) - Baldwin Park, CA
 SANBONGI, Fred - Sacramento, CA
 SANBONGI, Yoshiko (Moriya) - Sacramento, CA
 SASAKI, Thomas H. - San Francisco, CA
 SATO, Art - Sacramento, CA
 SATO, Hamayo (Michihara) - Seattle, WA
 SATO, Kunito - Scottsdale, AZ
 SATO, Ann - Scottsdale, AZ
 SATO, Alwin - Sacramento, CA
 SATO, Tomiye (Masaki) - Sacramento, CA
 SEKIGUCHI, Amy - Sacramento, CA
 SENO, Toyoko (Mizobe) - Sacramento, CA
 SENO, Alvin - Sacramento, CA
 SEO, Akio - Sacramento, CA
 SHIBATA, Kay - Sacramento, CA
 SHIBATA, Frances (Ikeda) - Sacramento, CA
 SHIBATA, Ray - San Francisco, CA
 SHIBATA, Nancy (Hamada) - San Francisco, CA
 SHIBUYA, Yuki (Amemiya) - Rancho Palos Verdes, CA
 SHIGAYA, Harry S. - Seattle, WA
 SHIGAYA, Terrie (Kamihara) - Seattle, WA
 SHIMADA, Natsuko Nancy (Kawano) - Berkeley, CA
 SHIMADA, Fumi - San Francisco, CA
 SHIMADA, Amy - Freemont, CA
 SHIMATSU, Akiko (Mikami) - San Francisco, CA
 SHIMAZU, Shig - Sacramento, CA
 SHIMAZU, Mary (Abe) - Sacramento, CA
 SHIMOKUBO, Tsugi (Fujii) - Scottsdale, AZ
 SHINGU, Fred T. - Monterey Park, CA
 SHINGU, Masako - Monterey Park, CA
 SHINTAKU, Asa - Sacramento, CA
 SHINTAKU, Martha M. (Uyeminami) - Sacramento, CA
 SHINTANI, Mary (Shibasaki) - Monterey, CA
 SHIRAI, Akiko May - Sacramento, CA
 SHIRAI, Eucaly - Sacramento, CA
 SHIRASAGO, Fred - Sacramento, CA
 SHIRASAGO, Kate (Ozawa) - Sacramento, CA
 SORAKUBO, Torao - San Martin, CA
 SORAKUBO, Shizuka - San Martin, CA
 SORAKUBO, Hiroshi - Morgan Hill, CA
 SORAKUBO, Sumiko (Matsumoto) - Morgan Hill, CA
 SUGIYAMA, Henry I. - Sacramento, CA
 SUGIYAMA, Margo Masako (Sofye) - Sacramento, CA
 SUGIYAMA, William M. - Tacoma, WA
 SUGIYAMA, Yoshiko (Fujimoto) - Tacoma, WA
 SUGURO, Ed - Seattle, WA
 SUGURO, Toshi - Los Angeles, CA
 SUGURO, Aiko - Los Angeles, CA
 SUMIDA, George H. - Monterey Park, CA
 SUMIDA, Sadako (Higa) - Monterey Park, CA
 SUWABE, Akira - San Mateo, CA
 SUWABE, Kaoru (Yokogawa) - San Mateo, CA
 SUZUKI, Masamichi (Mac) - Bloomfield Hills, MI
 SUZUKI, George - Incline Village, NV
 SUZUKI, June - Incline Village, NV
 SUZUKI, Francis K. - Sacramento, CA
 TAJIRI, Naomi (Inai) - Reedley, CA
 TAJIRI, Akira - Reedley, CA
 TAKAHASHI, Hitomi 'Roy' - Monterey Park, CA
 TAKAHASHI, Shizuye (Uchimoto) - Monterey Park, CA
 TAKAMI, Hisako (Narahara) - Prospect Heights, IL
 TAKASUGI, Terry I. - Los Angeles, CA
 TAKASUGI, Mihoko (Tanokuchi) - Los Angeles, CA
 TAKASUGI, Misao - Los Angeles, CA
 TAKASUGI, Mitsuo - Los Angeles, CA
 TAKEMOTO, Takashi - Montebello, CA
 TAKEUCHI, Shizuko (Uyemura) - Fresno, CA
 TAMBARA, Sadaye - Monterey Park, CA
 TAMBARA, Toshi (Sato) - Sacramento, CA
 TAMBARA, George - Sacramento, CA
 TAMURA, Alvin - San Jose, CA
 TAMURA, Teresa (Omori) - San Jose, CA
 TAMURA, Yoshiaki - Rancho Palos Verdes, CA
 TANAKA, Hank - Cleveland Heights, OH
 TANAKA, Sachie (Fukiage) - Cleveland Heights, OH
 TANAKA, Paul H. - Honolulu, HI
 TANAKA, Hiroko I. (Ito) - Honolulu, HI
 TANAKA, Jim - Sacramento, CA
 TANAKA, Tomi (Matoba) - Sacramento, CA
 TANAKA, Shiz - Hayward, CA
 TANAKA, Nancy (Najima) - Hayward, CA
 TANAKA, Mrs. K. T. (Fujihara) - Sunnyvale, CA
 TANAKA, Violet (Ozawa) - San Francisco, CA
 TANAKA, Minoru - San Francisco, CA
 TANAKA, Robert M. - Mill Valley, CA
 TANAKA, Richard I. - Santa Ana, CA
 TANAKA, Edith (Arita) - Santa Ana, CA
 TANAKA, George J. - San Francisco, CA
 TANAKA, Christa I. (Hoffmann) - San Francisco, CA
 TANAKA, Kiyoshi - San Francisco, CA
 TANAKATSUBO, Sats - Chicago, IL
 TANAKATSUBO, Betty (Kaiharu) - Chicago, IL
 TANAKATSUBO, Nobuto - Palo Alto, CA
 TANBARA, George - Tacoma, WA
 TANBARA, Kimi (Fujimoto) - Tacoma, WA
 TANIGUCHI, Taeko - Seattle, WA
 TANIGUCHI, Howard - Turlock, CA
 TANIGUCHI, Alice (Ueyama) - Turlock, CA
 TANIKAWA, Frank - San Jose, CA
 TAURA, Masayasu B. - Chicago, IL
 TAURA, Martha (Sugimoto) - Chicago, IL
 TEKAWA, Ray - Monterey Park, CA
 TOKI, Masato Ty - San Francisco, CA
 TOKI, Mary (Goishi) - San Francisco, CA
 TOKUMARU, Dennis - Santa Barbara, CA
 TOKUMARU, Tomoye "Tommi" (Takahashi) - Santa Barbara, CA
 TOKUNO, Lucille Harumi (Tanaka) - Yuba City, CA

TOKUSHIGE, H. Vic - San Jose, CA
 TOKUSHIGE, Peggy (Tsuchida) - San Jose, CA
 TOMOOKA, Masayoshi 'Massey' - Santa Maria, CA
 TOMOOKA, Toshiko (Yamauchi) - Santa Maria, CA
 TOYAMA, Toshiko N (Ikeda) - Sacramento, CA
 TOYAMA, Evan - Sacramento, CA
 TSUJIMOTO, Mack F. - Loomis, CA
 TSUJIMOTO, Sumi (Sasaki) - San Francisco, CA
 TSUJISAKA, Stan - San Francisco, CA
 TSUJISAKA, Kiko - San Francisco, CA
 TSUKIJI, Chiyeko - Sacramento, CA
 TSUKIJI, Ted - Sacramento, CA
 TSUKIJI, Geraldine 'Gerry' (Nakano) - Sacramento, CA
 UCHIYAMA, Betty - San Mateo, CA
 UJIFUSA, Robert Lee - San Jose, CA
 UJIFUSA, Kathryn (Nakamura) - San Jose, CA
 UMEDA, Christine (Asoo) - Sacramento, CA
 UNO, Shiz (One) - Hanford, CA
 UOHARA, Ardene (Kitazumi) - Orinda, CA
 UOHARA, George - Orinda, CA
 USUI, Frank M. - Torrance, CA
 USUI, Susie (Ariyoshi) - Torrance, CA
 UYEDA, George - Monterey, CA
 UYEDA, Toshiko (Shibasaki) - Monterey, CA
 UYEDA, James - Zephyr Cove, NV
 UYEDA, Frank - Zephyr Cove, NV
 UYEDA, Mark M. - La Mirada, CA
 UYEDA, Massie - La Mirada, CA
 UYEDA, Masako (Manji) - Sacramento, CA
 UYEHARA, Hatsuye S. - Sacramento, CA
 UYEMATSU, Rose (Fujikawa) - Anaheim, CA
 UYEMATSU, Nori - Anaheim, CA
 UYEMURA, Tadao "Todd" - Sanger, CA
 UYEMURA, Etsuko (Nakagawa) - Sanger, CA
 UYENO, Fred T - Sacramento, CA
 UYETAKE, Shio - Corbett, OR
 UYETAKE, Nobuko (Mukai) - Corbett, OR
 WARDEN, Michiko H. (Hyogo) - Cypress, CA
 WATANABE, Terry M. - Gardena, CA
 WATANABE, Helen (Tanaka) - Gardena, CA
 WATANABE, Kay - Los Angeles, CA
 WOOD, Kaye Kikuye (Hayashida) - Elk Grove, CA
 YABE, Penelope - Fremont, CA

YAGI, Alice (Ikeda) - Sacramento, CA
 YAGI, George - Sacramento, CA
 YAGI, Chieko Alice (Fujii) - Sacramento, CA
 YAMABE, Don - Sacramento, CA
 YAMADA, Hideko (Iida) - Saratoga, CA
 YAMADA, Mitsuo - Saratoga, CA
 YAMAGUCHI, Hide (Tateoka) - Fresno, CA
 YAMAGUCHI, Tak - Fresno, CA
 YAMAICHI, Jimi - San Jose, CA
 YAMAICHI, Eiko (Tanaka) - San Jose, CA
 YAMAMOTO, Chiyoko - San Francisco, CA
 YAMAMOTO, John - Concord, CA
 YAMAMOTO, Masako (Miyamoto) - Concord, CA
 YAMAMOTO, Masa - Sacramento, CA
 YAMAMOTO, Fusako (Miyasaki) - Sacramento, CA
 YAMAMOTO, Jayne Michiko (Sako) - Sacramento, CA
 YAMAMOTO, Mitsuo - Sacramento, CA
 YAMANE, Michi (Nishino) - San Lorenzo, CA
 YAMANISHI, Herbert - San Francisco, CA
 YAMASAKI, Edith (Fujikawa) - Graden Grove, CA
 YAMASAKI, Mas - Fremont, CA
 YAMASAKI, Helen (Tashiro) - Fremont, CA
 YAMASHITA, Totto - Berkeley, CA
 YAMASHITA, Iris Ayame (Tsujikawa) - Berkeley, CA
 YATSU, Teruko (Yeya) - New Orleans, LA
 YATSU, Lawrence Y - New Orleans, LA
 YEGO, Jean (Nakatani) - Sacramento, CA
 YOKOTA, Ai - Sacramento, CA
 YOKOTE, Jack T. - Camino, CA
 YOKOTE, Shigeo - Loomis, CA
 YOKOTE, Rose (Takuma) - Loomis, CA
 YOSHIKAI, Tom - Salem, OR
 YOSHIKAI, T. Georgette (Motomatsu) - Salem, OR
 YOSHIKAWA, Edward K. - Minneapolis, MN
 YOSHIKAWA, Pearl Y. (Hirata) - Minneapolis, MN
 YOSHIMIA, Tim - Sacramento, CA
 YOSHIOKA, Masauki Mas - Los Angeles, CA
 YOSHIOKA, Kiyoko Kiyo (Akutagawa) - Los Angeles, CA
 YOSHIYAMA, Sue (Suguro) - Monterey Park, CA
 YOSHIYAMA, Takeo - Monterey Park, CA
 YOSHIZUKA, Jack - Sacramento, CA
 YOSHIZUKA, Betty (Tsuda) - Sacramento, CA

**WELCOME
AND
BEST WISHES!**
to Tulelake Reunion VI

from your Hosts

**DOUBLETREE HOTEL
SACRAMENTO**



*The Tulelake Reunion Committee
gratefully acknowledges
the assistance and cooperation
extended to us
in hosting the past five
and the present
Tulelake Reunion VI.*

*We thank
the management and staff
for their courtesies
and outstanding services
that ensured the success
of this reunion.*