

*All employees
Segregation Center*

INFORMATION

CONCERNING

Tule Lake Center





UNITED STATES DEPARTMENT OF THE INTERIOR
WAR RELOCATION AUTHORITY
TULE LAKE SEGREGATION CENTER
NEWELL, CALIFORNIA

FOREWORD

The War Relocation Authority was created in March, 1942, by Executive Order, Number 9102, to provide temporary maintenance, medical care and education for persons of Japanese descent who were evacuated from the West Coast by the Army because their concentrated population presented a security problem during the critical period following Pearl Harbor.

While the majority of the 110,000 evacuees wanted to live and act as real American citizens or law abiding aliens, some signified their loyalty to Japan and their wish to live as Japanese nationals. In the Fall of 1943, nearly all of the evacuees in the latter category remained in the Tule Lake Center or were transferred there from the nine relocation centers. The Tule Lake population of 18,600 persons is complex because it includes evacuees actively loyal to Japan and its war aims, elderly people who wish only to return to their homeland to spend their last years, persons who for various personal reasons no longer desire to live in the United States and want to return to Japan, people who lived in Tule Lake before segregation and rather than move to a relocation center decided to sit the war out here, and finally, children who had to and youths who chose to stay with their parents out of loyalty or obedience regardless of the implications.

The operation of the Tule Lake Center in a just and orderly manner is a grave wartime

responsibility of the United States government. It is an acid test of American principles of human decency and law and order. In addition, because most residents of the Tule Lake Center have allied themselves with Japan, that nation scrutinizes the operation of the center and upon the slightest excuse threatens acts of reprisal against interned American civilians and prisoners of war.

Every employee on the Tule Lake staff makes a valuable contribution to our country's ultimate victory in the war and in the peace to follow when he performs his day-to-day duties in a calm and intelligent way. It is not an easy job nor a job popular with a public emotionally upset by war hysteria.

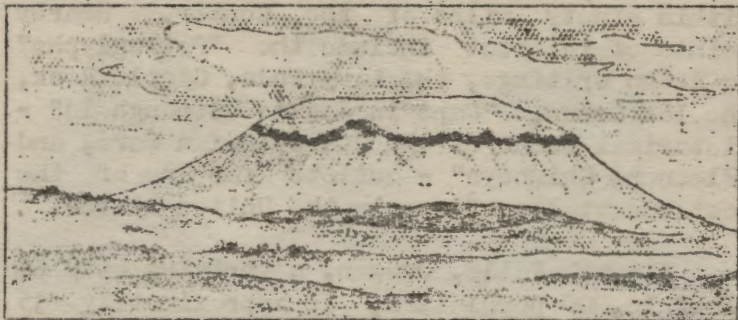
To do his job right an employee of the WRA at Tule Lake must maintain an objective attitude in his relations with evacuees. Policies of the WRA for administration of the Tule Lake Segregation Center are based on experience accumulated during the early days of WRA and Tule Lake and upon the principles to which our nation as a great government must adhere. We have found these policies to be sound and I do not hesitate to ask employees to follow them.

R. R. Bost

R. R. Bost
Project Director

September, 1944

LIFE AT TULE LAKE CENTER



The Tule Lake Segregation Center, a project of the War Relocation Authority, is located in the northeastern corner of California in the Klamath Valley, famous for the raising of potatoes as well as for migratory water fowl. Surrounding areas abound in wild life, including ducks, geese, pheasant, quail, deer, muskrat and rabbit. Excellent hunting is provided during the Fall season. In addition, within a radius of ninety miles, many streams and lakes afford fine fishing for both professional and amateur "Izaak Waltens".

The altitude of the Tule Lake Center is approximately 4000 feet. Consequently, the climate is extremely dry and healthful. Temperatures may range from 100° in the summer to zero weather in the winter. Summer nights are always cool and winter days are usually sunny. In some years snowfall has been heavy enough to provide excellent opportunity for winter sports.

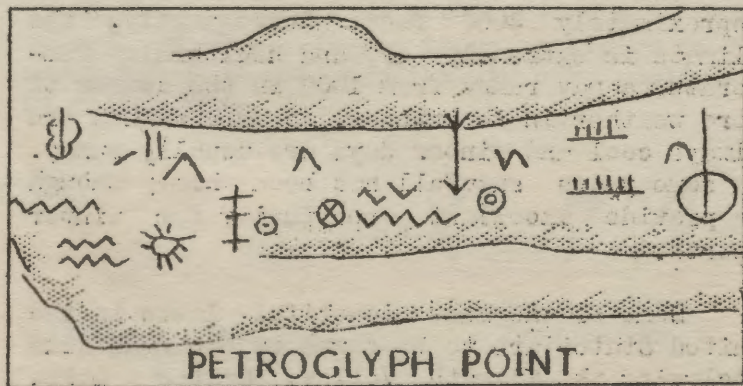
Some of the most beautiful lakes in the United States are to be found in the mountains enclosing the Klamath Valley. Crater Lake,

famous as one of the wonders of the world, is within ninety miles of the Center. Nearby points of interest include the "Petroglyphs" or Stone Writings, the Lava Beds, Castle Rock, the Ice Caves, "Captain Jack's Stronghold" - historical scene of the Modoc Indian Wars, and "Fleeners Chimneys" - outlets for one of the most recent lava flows in the United States.

Klamath Falls, Oregon, a thriving city of about 16,000 population, is approximately 35 miles from the Center. The towns of Tulolake, California, and Merrill, Oregon, are 7 and 16 miles respectively from the Center.

A bus leaves Klamath Falls at 8:30 A.M. daily for Tulo Lake Center. A bus leaves the Center for Klamath Falls at approximately 4:45 P.M. daily.

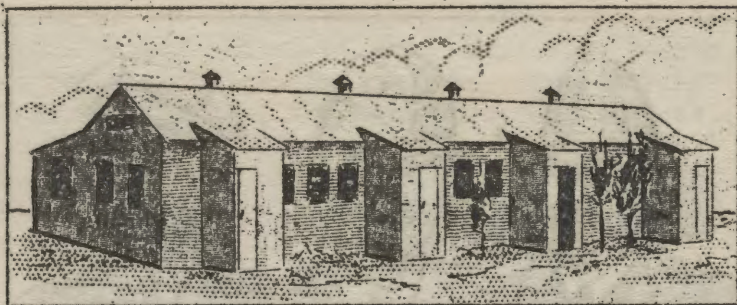
Most employees wear informal sports clothing to work, as living in the Center is more like country life than city life. Employees are advised to bring serviceable clothing and shoes.





Tule Lake Center is entirely surrounded by a manproof fence. Within that fence is another manproof fence separating the Administration office and housing area from the "colony" or Japanese housing area. Adjoining the Center is Camp Tulolake, an Army post, made up of a military police battalion. This post is responsible for the external security of the Center and is available for immediate assistance in case of any disturbance with which the WRA police force is unable to cope. The WRA police force is armed and is responsible for law and order within the Center. There is a WRA fire protection section which is responsible for maintaining an efficient fire fighting unit for the Center. The Army post fire fighting force may be called in when needed.





Employees are expected to live in the Center. Living accommodations consist of dormitory rooms, single rooms, double rooms and housekeeping apartments. Although families are given preference for housekeeping apartments, usually no definite guarantee can be given as to housing assignment at the time of arrival.

Dormitory accommodations consist of a number of small sleeping rooms, one person to a room, with community shower and lavatory facilities. Linens, bedding and daily maid service are furnished.

The single rooms with adjoining bath and the double rooms, usually with private bath, are furnished, with the exception of draperies. Daily maid service is included.

Housekeeping apartments range in size from single apartments, consisting of living room, kitchen and bath, to apartments consisting of living room, three bedrooms, kitchen and bath. Apartments are equipped with necessary furniture except rugs and draperies. Electric ranges, refrigerators and oil heaters are standard equipment. All utilities are

furnished. Silverware, cooking utensils, dishes, bedding, linens, iron, ironing board and any electrical appliances or small decorative pieces must be furnished by the employee.

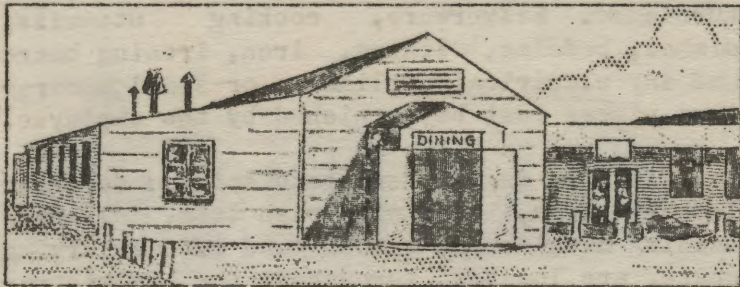
Laundry facilities, consisting of separate laundry rooms, each with wash tubs, electric washing machine and indoor and outdoor drying space, are located throughout the administration housing area. One laundry room services a specified number of rooms and/or apartments.

Ample storage space in locked warehouses is available to employees.

At present, only a limited number of garages are available. As the Center construction program progresses, it is hoped that a sufficient number of garages will be provided for all persons desiring them.

Following is the list of prices for dormitory rooms, single rooms, double rooms, apartments and garages:

Dormitory rm. (one in room)	. \$ 5.00 per mo.
Single rm. adj. bath.....	9.00 per mo.
Double rm. (for 2) adj. bath.	12.50 per mo.
Double rm. (for 2) pri. bath.	16.00 per mo.
Single apt. (no bedroom)....	17.50 per mo.
One bedroom apartment.....	20.00 per mo.
Two bedroom apartment.....	22.50 per mo.
Three bedroom apartment.....	25.00 per mo.
Garage.....	2.50 per mo.



Three meals daily are served in the Center Dining Hall, as follows:

Breakfast... 7:00 to 8:00 A.M.
(except Sunday)
8:00 to 9:00 A.M.
(Sunday)

Lunch..... 12:00 to 12:45 P.M.
(Monday through Friday)
12:15 to 1:00 P.M.
(Saturday)
12:00 to 1:00 P.M.
(Sunday)

Dinner..... 6:00 to 7:00 P.M.
(except Sunday)
5:00 to 6:00 P.M.
(Sunday)

The cost of meals is based on average cost per meal for each semi-monthly period. Each meal served to a child under 8 years of age is considered one-half a meal and will be charged for at one-half the rate for adult meals.

Charges for visitors' meals are 50¢ for adults and 25¢ for children under 8 years of

age. Cash collection is made for all meals served to visitors.

Payroll deductions are made from salary checks for the last half of each month to cover payment for meals eaten during the first half of the month. All meals for appointive staff must be charged.

It is estimated that the average cost of meals will be approximately 40¢ per meal; the prices are subject to change, based on cost.

Ration books must be surrendered only if eight or more meals a week are eaten in the dining hall.

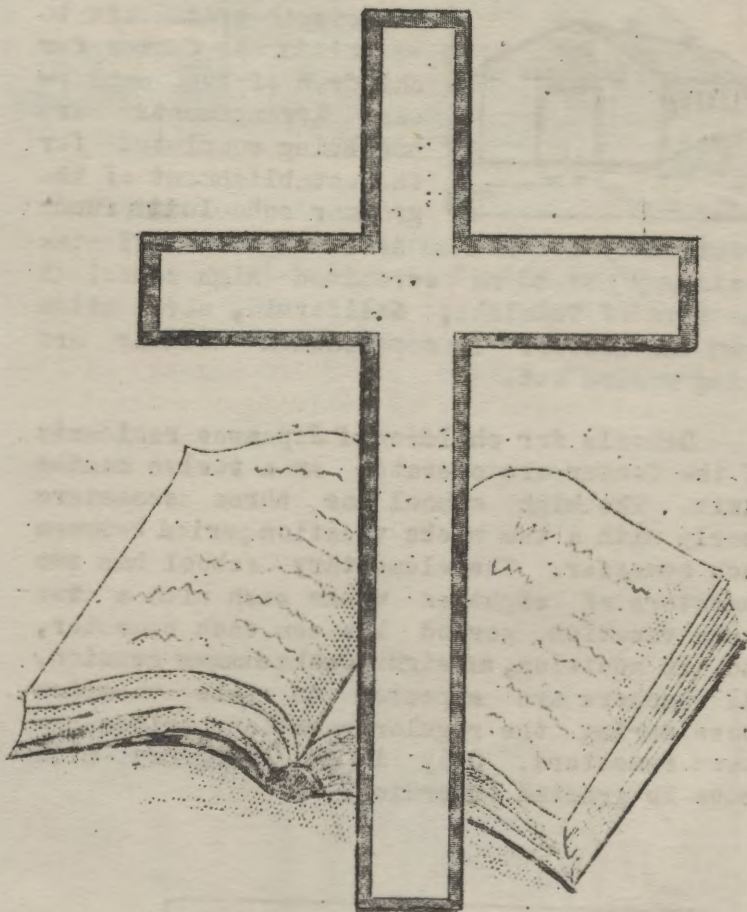




The social life of the Center revolves around the Personnel Recreation Club. Each employee and the members of his family are eligible to join. In the Recreation Club one may enjoy ping pong, billiards, bridge and dancing. A small library, record collection, radio and refreshment bar are other features. Hikes, picnics, bicycle outings, tennis, dances, bridge contests and teas are some of the many activities sponsored by the Club. Owners of bicycles are urged to bring them as bicycle riding in both the Center and the surrounding country is enjoyed by many.

First run motion pictures are shown at nominal cost five nights a week, with a change of bill for each showing.

As previously mentioned, hunting and fishing afford excellent recreational opportunities for sportsmen. While lakes and streams for fishing are from 35 to 100 miles from the Center, hunting for duck and geese may be had within a quarter mile of the Center. Deer, quail, pheasant and rabbit may be found within ten miles of the Center. Prospective hunters and fishermen are advised to bring whatever hunting equipment and appropriate clothing they may have.



A cordial invitation is extended to all employees of the Center to attend Protestant or Catholic services, both of which are held each Sunday morning at the Army post adjoining the Center.