

## RELIGION

The religion of Amache is predominantly Protestant with representatives from the following denominational groups: Methodist, Baptist, Presbyterian, Holiness and Seventh-Day-Adventists. Their total membership approximates 2,000 with 15 ordained ministers who take turn conducting services each Sunday in both English and Japanese. The elder members meet at 10 A.M. in 7H and 10H recreation halls simultaneously with the young Christian groups who meet in Terry Hall, one of the public meeting places located in the school district.

The next largest group are those of the Buddhist faith. They number about 600 and conduct their services in a typical oriental pattern. However, English services are also conducted for the nisei. The Sunday school is held each week at 9 A.M. at 7G and 12G recreation buildings. The elder group holds their worship service on Saturday afternoons at 2 P.M.

Another group are the Catholics who hold their mass on Saturday mornings, officiated by a Father who resides in a neighboring community and visits the center every week for this purpose.

## PUBLICATIONS

The Granada Pioneer is a local bi-weekly

newspaper delivered free to each unit of every barrack on Wednesday and Saturday evenings. It is mimeographed and has a total circulation of 3,000. About 400 complimentary copies are mailed to various other individuals, libraries and relocation centers.

This department is staffed by twenty-six evacuees who edit and publish news and comments in English with translations in Japanese. The printing is done by the mimeograph section of the newspaper office.

Other publications appearing at regular intervals are the Granada Christian Church News; Reveille, a Boy Scout paper; Amache Facts, It and Junior Pioneer, three school papers.

#### COMMUNITY ENTERPRISES

The local consumer's cooperative known as the Amache Consumer's Enterprises Inc., with a total capitalization of \$25,000, is one of the largest organizations of this kind in the State. It was incorporated in January 25, 1943, and is a member of the National Cooperative Inc., Chicago, Illinois. Its 2,387 members among the residents of this project own 4,975 shares and have under their management clothing store, variety store, shoe store, shoe-repair shop, cleaning and pressing agency, barber shop, beauty parlor, canteen, watch repairing, and optometry supplies. The gross sales from all its activities amounts to more than \$40,000 per month.



The responsibility of supervising this organization is vested in the nine board of directors who are elected annually by the stockholders.

### SOCIAL ACTIVITIES

Different forms of recreation and creative pastimes are offered to the evacuees through the existence of clubs and organizations created by the people themselves. For the elder men, there are goh, shogi (Japanese chess), woodcarving, reading, and poem-writing clubs while for the women, there are flower-making, dressmaking, knitting, weaving, and crocheting circles.

The younger people, under the recreation department, hold talent shows, movies, dances, ping-pong tournaments, wrestling, song-fests, folk dances, and basketball games. The latter are played at the Granada High School gymnasium located two miles from the center where championship teams of the surrounding vicinity competed often with the local players.

Other informal groups are made up from those who have common interests in such subjects as radio, bridge, painting, writing, literature, model-building and music. The musically talented people have formed several dance bands which perform at various social functions.

Other well-known organizations which are taking part in national programs are the Boy

Scouts, Girl Scouts, United Service Organization, Christian Young People, Catholic Young People, American Legion, American Red Cross, YMCA, YWCA and its affiliated clubs.

An important group which deserves special mention is the Amache Coordinating Council created in November, 1942. It is composed of representatives from all the important agencies, which include in addition to those mentioned above, the police, social welfare, newspaper, and documentation departments. Its principal purpose is to suggest plans for making a better community and better citizens.

#### HOUSING

Typical living quarters of the evacuees are rows of rectangular army-style barracks, 120' x 20', divided into six compartments of which two each are entered by a common door. These rooms vary in size from 16' x 20' to 24' x 20' and are assigned according to the size of the family which ranges from two to seven individuals. Aside from a semi-completed closet, coal stove, folding cots, mattresses and quilts, no other article was provided. All other necessary furniture was made by the evacuees themselves from scrap lumber found on the construction site. The interior walls and ceilings are lined with insulation board while the floors are merely a layer of bricks laid on loose dirt.



## MESS HALL

The functional activity of the block is centered around the mess hall where the evacuees go not only to eat their three meals a day but hold their talent shows, block meetings, movies and dances. This building is a standard structure 100' x 40' having a seating capacity of 200 to 250 people. The kitchen part of each mess hall is equipped with an up-to-date refrigerator, two galvanized sinks, water heater, steam sterilizer, and three coal ranges. The kitchen personnel is composed entirely of evacuees.

The meals are served cafeteria style, each individual lining up at the counter to receive his plate and then sitting down at a long wooden table. Coffee is served in the mornings, while tea, water or milk is provided at other meals. The menus are prepared by the WRA mess division and adhere strictly to the ration regulations governing any institution outside the center.

## ADMINISTRATION

There are two administration buildings, the north and south, which face the main thoroughfare not far from the entrance gate. It is through these buildings that the various administrative functions of the project are carried out. In the north hall are found the offices of the project director, assistant project director,

procurement, cost-accounting, finance, auditing, and senior administrator. The telephone switchboard is also located here. The south building houses the offices of chief of police, personnel, public works, education, project attorney, housing, and timekeeper.

The community service department and the reception hall which supervise the social welfare activities of the center are located in a barrack-size building across the street from the fire department. The Pioneer Building in the western portion of the administration area houses the newspaper office for which the building is named, the documentation section and the reports office.

The duties of the office service section which include such functions as filing records, sending and receiving teletype messages, sorting mail, and project mimeographing are carried on in a similar structure found in back of the main administration buildings.

The important work of handling the evacuees' leave clearance papers and placing them in contact with suitable employers on the outside is conducted in the leave and employment offices located immediately north of the administration buildings.

Lying adjacent to the entrance gate is a frame building which houses the supply and transportation division and the project farm division. The living quarters of the appointed personnel are located between 4th and 5th streets southwest of the fire department.



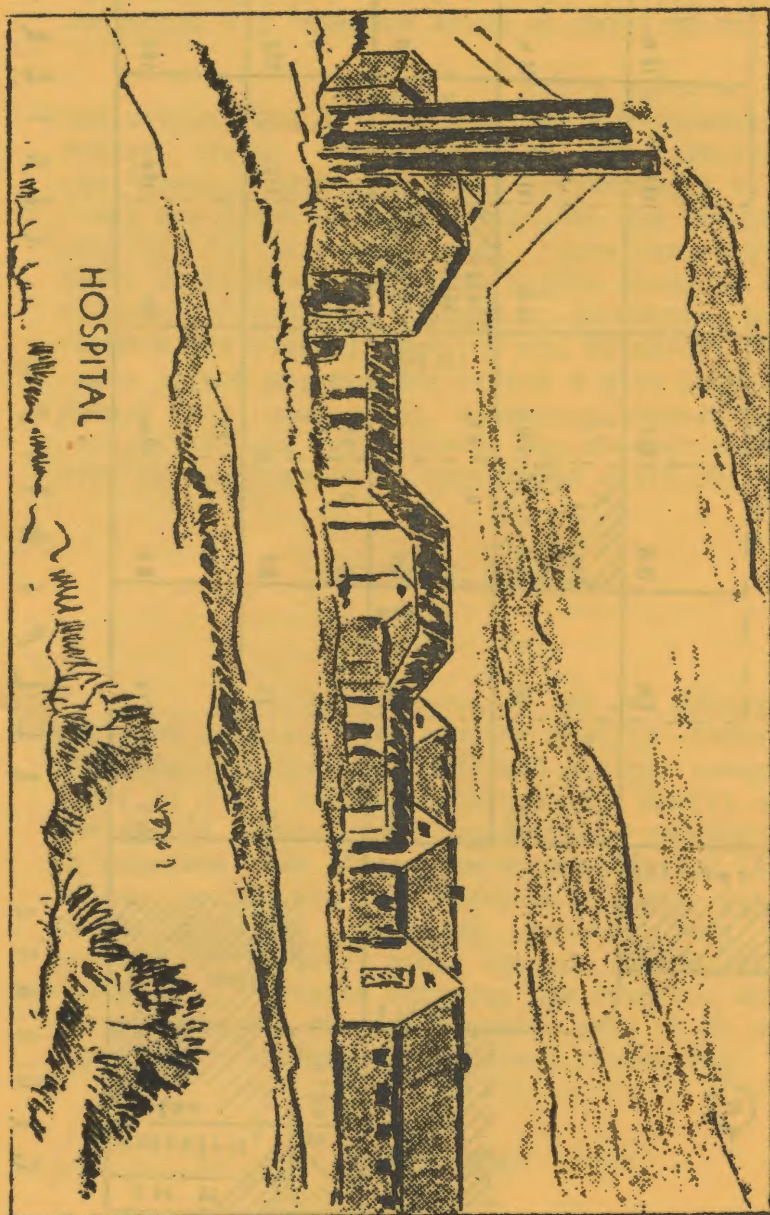
## HOSPITAL

Socialized medicine, novel to physicians and evacuees alike, is being practiced to maintain the health of Amache residents. The seventeen-winged hospital, built identical to an Army-post unit, has approximately 150 beds and is staffed by a chief medical officer, who is a member of the appointed personnel, and five evacuee doctors. A Caucasian registered nurse supervises the work of a evacuee registered nurse, three student nurses, and 21 nurse-aides. However, they constitute only a small fraction of the total of 219 hospital employees.

The hospital is comparable to any first class institution of similar size, possessing complete equipment to care for almost any kind of ailment.

Among the many divisions of the medical units are the out-patient clinic, pharmacy, optometry, laboratory, X-ray department, all located in the out-patient building, and the dental clinic. The out-patient clinic is the busiest section of the unit. Approximately 800 patients are treated here in one week alone. The surgery ward is a special unit for minor and major operation.

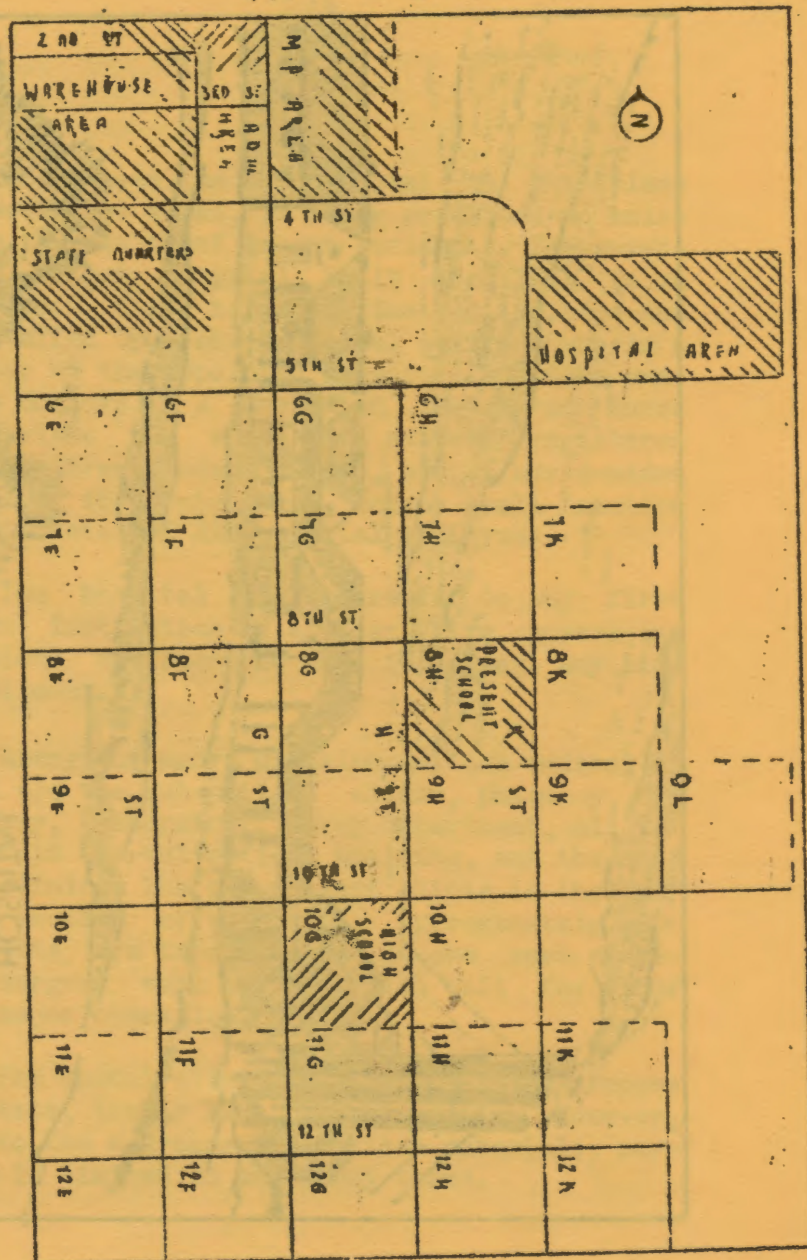
The dental clinic, staffed by seven evacuee dentists, treats 125 patients daily. However, due to the shortage of critical materials, service is limited to emergency cases.





RECEIVED 2000

GAHANADA  
SCALE 1" = 800'



## POST OFFICE

The Amache Post Office occupies a structure 100 by 40 feet located between the administration building and the fire station. It is a regular branch of the Lamar Post Office managed by five Caucasian personnel who are regular civil service employees of the United States Post Office Department. They are assisted by an evacuee postmaster, four senior clerks and two filing clerks. Approximately 2,500 to 3,000 letters and 400 packages are routed through this office. Fifteen evacuee mail carriers make one delivery per day to the residents.

## FIRE DEPARTMENT

The fire department is located on the main street between the residential and administration areas. It houses two modern Ford trucks equipped with a triple combination pumper capable of throwing 500 gallons of water per minute. This equipment is manned twenty-four hours a day by three shifts of platoons comprising eight to ten men each. The responsibility for the training and operation of these units are vested in a Caucasian fire-protection officer, his assistant, and an evacuee fire chief. Living accommodations are provided for the firemen who are on night duty.

In addition to these members, are volunteer and auxiliary firemen from each block who re-



ceive periodic training in fire combat.

A fire is reported through emergency telephones located throughout the center.

#### POLICE DEPARTMENT

The important duty of preserving law and order within the center lies in the hands of the Amache police department. This force, headed by an internal security officer who is a member of the WRA staff, consists of 60 evacuee men properly trained in police tactics. Their efficiency is attested by the fact that no serious crime has occurred within the center to date.

The Amache police department is modeled after a similar organization on the outside with the following officers: evacuee chief-of-police, 3 captains, 3 desk sergeant, 3 field sergeants, one release sergeant, one transportation sergeant, and 48 patrolmen.

The patrolmen are assigned beats in 8-hour shifts. The police headquarter and barrack are located in block 8-F, while the office of the chief security officer is located in the south administration building.

The function of the military police must not be confused with that of the local force since the former is restricted to the patrolling of areas outside the center and has no jurisdiction within it.