

# Ex-CBI Roundup

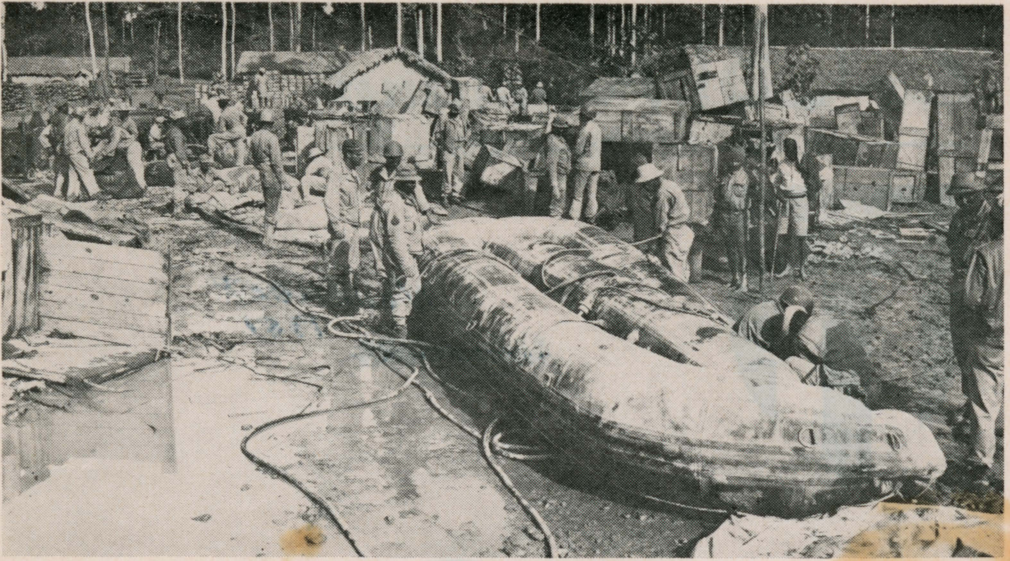
— CHINA — BURMA — INDIA —



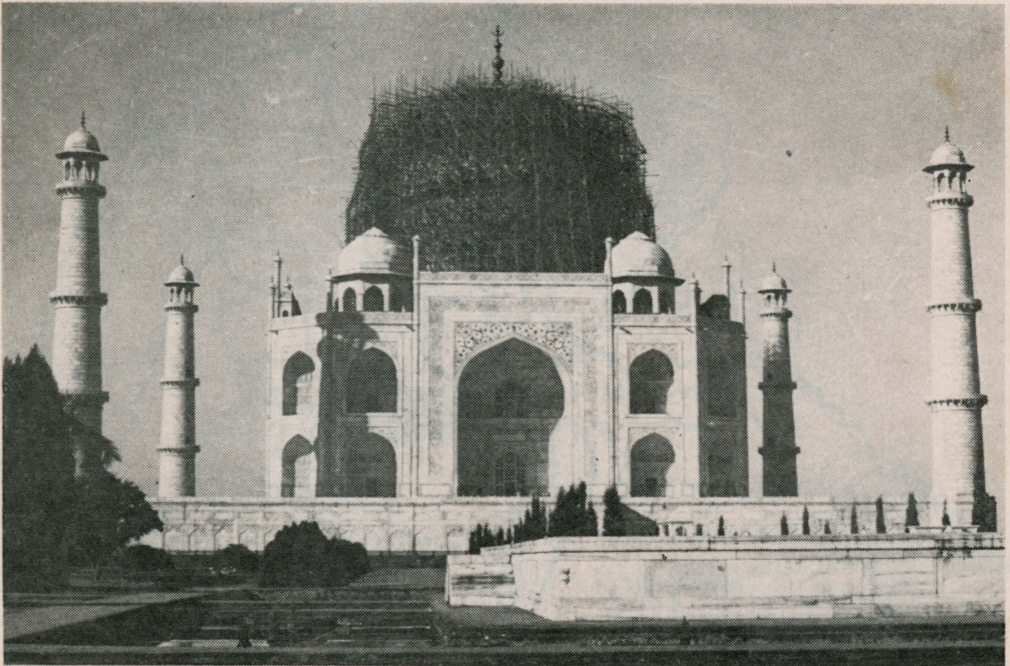
NOVEMBER  
1951

~~May 1951~~





PNEUMATIC RUBBER FLOATS for pontoon bridges, used on sections of the Stilwell Road, are being blown up by American troops in an Engineer Depot near Shingbuiyang. These GI's, operating in a jungle clearing, had just removed the floats from their packing crates. Photo taken in early 1944 by U.S. Army.



IF YOU WERE AN "EARLY arrival" in India you may have seen the famed Taj Mahal's dome completely covered with a network of scaffolds. Photo taken during work on the dome in 1942-43 by Al Cellier.