

Gila News-Courier

VOL. I NO. 11

RIVERS, ARIZONA

October 17, 1942

JACL Office Open in Block 42

Ray L. Smith, Los Angeles attorney, has distributed through the national JACL more than 25,000 printed application forms to voters in the various relocation and assembly centers.

Voters are urged to send in their applications early in order to cast their ballot before the deadline. Applications should be directed to the registrar of voters or the county clerk of the voter's county.

"Every citizen here should exercise his right to vote. We will aid them in every way possible," thus E. R. Fryer, acting project director indicated his interest in the absentee ballot voting in general elections.

L. A. County registrants should apply to M. J. Donoghue, registrar of voters, 809 N. Spring St., Los Angeles. Ventura County registrants should apply to L. E. Hollowell, County Clerk.

In order to aid voters in this election, JACL will open an office in block 42 next week. This office will serve as headquarters for the Gila Chapter now in the process of formation.

Assurance was given by E. R. Fryer that notary service will be available free of charge to those casting ballots.

STOCKTON, FRESNO ARRIVE TODAY

The arrival of 350 residents from Stockton and Fresno today, followed by 2,302 Santa Anita miscegenating days, will fill Gila colony to its capacity, announced John C. Henderson, head of housing.

With an estimated 500 in each contingent, composed of former residents of western Los Angeles and Pasadena, the first group is expected to arrive tomorrow noon. They will be inducted at the housing department, rec. hall 29.

Butte Citizens Poll 1,813 Votes; 21 Block Representatives Elected

Butte Community's 21 Block Representatives were elected at Thursday's elections when approximately 45% of the eligible voters cast their ballots.

Akira Kaizoji of block 49 polled 174 votes to lead the field. He was uncontested. Three other candidates, Robert Hiramatsu of 40, Jimmy Fujimoto of 54, and Keizo Ishizu of 58 were others receiving all votes cast.

Tom Koyama of 47 was voted over George Sahara,

Colony Leaves Keep Steady Pace

Two former South Pasadenaans, Frederick K. Ishii and Lawrence Fujii, left the Gila colony Wednesday night. Entering on a special military permit, Fujii remained within the community for several days and will travel to the Middle West, while Ishii is destined for the University of Nebraska, Lincoln, Nebraska, also the destination of Jack Sameshima, departing Monday.

With Sameshima will be Johnny Arima, bound for Drake University at Des Moines, Iowa, and Tom Uramoto of Canal to be reunited with his parents in Carson City, Nevada.

Butte - Canal Workers Ride

Transportation service between Butte and Canal for workers, Caucasians, and evacuees was established on October 15.

A truck will leave the respective administration building of the two communities at 7:45 every morning and continual 30 minute service will be maintained. Service is limited only to those individuals with business purposes.

elected by a margin of two polling 23 out of 62 cast. The closest total result came in block 63 where Ted Soyoshima became Block Representative. Henry Kondo with 24 votes, Joe Miyamoto with 22, and Cathleen Shimamura with 19 contested him strongly.

TWO WOMEN CANDIDATES

Two women candidates vied with the men for Council offices—Florence Hasegawa of 61 and Cathleen Shimamura of 63. Six write-in candidates were recorded. Five received single votes and Taki Asakura polled four in block 72.

A total of 1,813 votes were cast. Registered voters numbered 2,727. There is an estimated 4,000 voters in Butte. Block 49 led in registered voters and the number voting with 207 and 174, respectively.

BLOCK REPRESENTATIVES

Elected Block Representatives are 39—William Nishino, 40—Robert Hiramatsu, 46—Tom Kurihard, 47—Tom Koyama, 48—Ken Kitasako, 49—Akira Kaizoji, 51—Ivan Ishiguri, 52—Tetsuya Mayeda, 54—Jimmy Fujimoto, 55—Bill Oyama, 56—Robert Oyamura, 57—George Nishimura, 58—Keizo Ishizu, 59—Eric Kawai, 60—Thomas Mizuno, 61—Kenzo Goto, 63—Ted Soyoshima, 64—Daichi Umeda, 65—Bill Kato, 66—Shigeyoshi Kusaba, 72—Mada Muneno.

Rules on Night Travel Stated

Parolees released from internment camps are not required to report regularly while within a relocation center, clarified W. E. Williamson, director of internal security, following a letter from the Parole Officer, El Paso, Texas.

PASS REQUIRED AT NIGHT

Colonists who leave the camp premises at night without a pass are subject to arrest by the military police for violation of a Presidential Proclamation. Residents may move in any part of the 15,000 acres during the daytime.

GILA News-Courier

Published every Wednesday & Saturday
Distributed without charge to every room
Extra copies available at News Office

Editorial & Business Office: 57 News Room



Food Hoarders - Food Shortage

In order to set at rest many "rumors" which have been running wild around Canal and Butte cities about "food shortages," Mess Operations is most interested in having everyone know "real facts" and not purely the "pipe dreams" which are apparently going the "rounds."

The idea of "food shortage" undoubtedly may be due to the articles which are now appearing in the daily newspapers about "food rationing" which our government is now considering for a nation-wide basis in the future, not because there is an actual shortage of food but due to the heavy demands now being made on transportation systems in all sections of our country. The railroads are working twice as hard as any time in history. They, the railroads, have made all manner of changes in the trains which carry passengers. There are now only the necessary cars for ordinary travel. All the former comforts or luxury cars are in storage. This is done to cut down unnecessary accommodations.

Therefore it is important that our people on the project know that they may be aware of actual facts and not "rumors" and "gossip."

We regret to say that several days ago Mess Operations discovered hoarding of food stuffs. Such a procedure is of course a serious affair, under present conditions, intolerable, besides making for unpleasant circumstances for those who so unwittingly made this mistake.

It is my wish that any one who feels concerned about a condition of this kind, food shortage, should by all means take time out and come to my office to permit me to correctly inform anyone of the true conditions about our food and how it is handled. The Welcome sign is always out to everyone who is desirous of making such a visit.

Remember the truth has never harmed anyone. We don't like rumors.

As a parting reminder, we hope not to find any more "hoarding" because hoarding means some mess hall has been deprived of their just amount of daily food.

--Frank W. Harding

Gentleman-Hell! - President-Well!

Blake Clark, in his book "Remember Pearl Harbor," tells this story of the capture of the first Japanese war prisoner. As the Japanese submarine commander walked on the beach, he was challenged by the Hawaiian Japanese sentry. "Don't talk to me like that, said the Japanese officer, "I am a gentleman." "Gentleman, hell," the nisei soldier replied, "If it weren't for guys like you, I wouldn't be patrolling this lonely beach for \$21 per month!" (Vagaries, in the "Pacific Citizen")

We can imagine the president of the U. of Arizona walking out into the ag fields, and telling some loyal nisei, perhaps one with a brother in the US Army, just what the press quoted him as saying. Then, after the nisei's first words, the conversation would run like this. "Don't talk like that to me, I'm a president." "President, WELL!" the nisei retorts, "If it weren't for guys like you, I wouldn't be working out here for \$16 per month." President Atkinson, of the University of Arizona was quoted as saying, among other statements concerning residents here, "We are at war, and these people are our enemies."

The letters favor food again, with Head Project Steward Frank W. Harding taking time out from a busy routine to effectively explode the omnipresent food shortage rumor. A ludicrous rumor to most of us, but taken too seriously by a few.

Our city has had, will continue to have, at all times, a thirty day supply of food. Gila's Christmas dinners are being purchased now in some distant city, since all food consumed here is ordered over 50 days in advance.

E. R. Fryer, in adding the final and finishing touch to the rumor, says, "When the Army doesn't eat, we won't eat," adding that the only possible shortage may be in vegetables, and any such shortage will be self-imposed by non-working Gila residents.

To T. I.:

Your article on Modern Moses was a trifle too long, will you come in to see us about it? We have misplaced your address.

To K. H.:

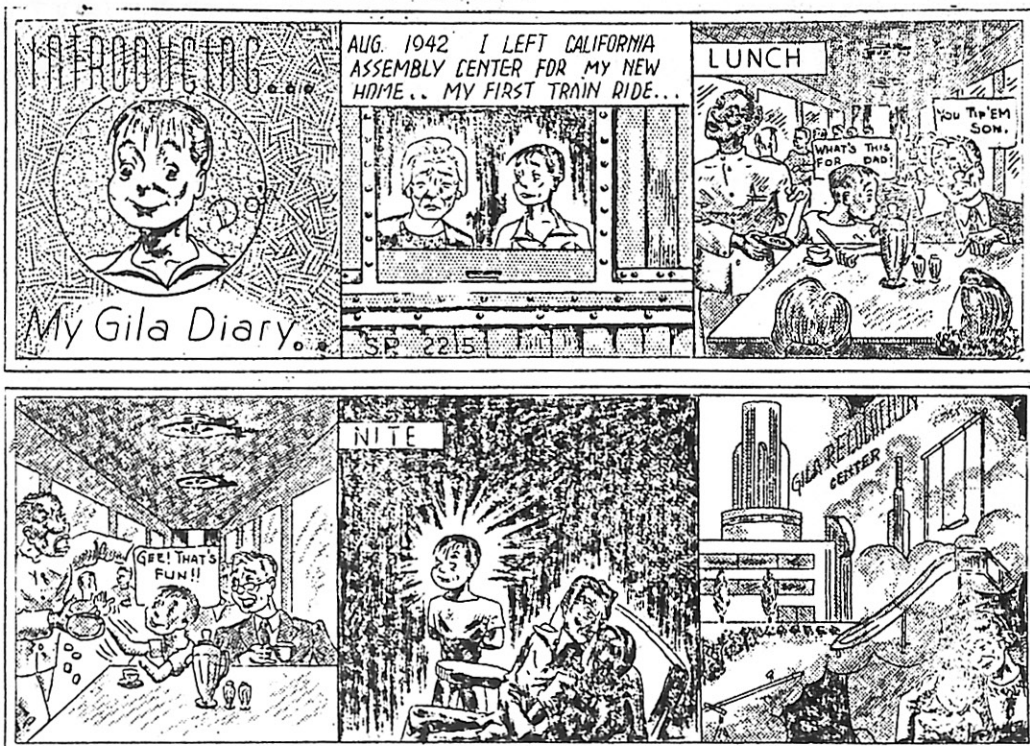
It must be you, although you did not sign your name. We know as well as you do what the Maryknoll Fathers did to bolster Il' Tokyo's morale in pre-evacuation days, and appreciate what they are doing now in the camps. Send news in early. To 30:

Appreciate your efforts on behalf of the confined turtles, but before we apply for a Gila S.P.C.A. charter, we might help the JACL, which are continually working for the confined evacuees.

To eligible voters:

Don't forget to write for your absentee ballot. Applications are obtainable at your block manager's office.

As early election results trickle in we are surprised and pleased at the civic interest shown by the issei. We hope the nisei show as great interest in the California elections.



Tree Planting Discouraged Now; November Better, Says Nichols

"Interest in the work and planning are two essentials which produce results in any field of work, and the spirit that people have shown in beautifying the project is gratifying indeed," stated Ellsworth Nichols, landscape engineer.

Nichols and his staff of nurserymen, however, discourage the planting of trees at present because the chances for their survival are slim. Even though they may live, the trees will not be as healthy as they will be if planted in late November, December and the early part of the year.

The general landscape planning for the colony is being done by Roy Marubayashi under the supervision of Nichols. Marubayashi is making separate plans for every block. Such plans will be designed to fit in with the beautification work already being done by individuals.

At present, there are approximately forty men employed under the landscape engineer.

Ken Kitasako has been appointed as administrative aide to the Employment and Housing Division. He will work directly under and together with J. C. Henderson, housing supervisor.

Pedestrians Check Miles

For industrious colonists who wish to travel the dusty trails bordering this camp, we have checked the approximate mileage around the colony. Three and one-tenth miles of good rubber soles will be put to waste, should any of our citizens attempt the task of walking around the camp site. Width, east and west, is approximately one-half mile and length, north and south, eight-tenths mile.

Soy Sauce Mill at Manzanar

Approximately 5,000 gallons of shoyu per month will be produced in Manzanar according to the Manzanar Free Press of October 10. With an estimated capacity of 7,500 gallons, enough to supply all centers, a superior grade of shoyu is expected, due to the quality of their water.

No Age Limit For Warehouseman

"Contrary to rumors prevalent in this community, there are no definite age limits set for warehouse workers," so stated W.B. McAlpine, warehouse unit head.

All warehouse goods are being restored in Butte, but lack of transportation facilities is greatly retarding its progress.

Squirrels Are Plague Source

Ground squirrels may make good pets, but they also are susceptible to sylvatic plague, which in man is bubonic plague.

Karl F. Myer, director of George William Hooper Foundation for Medical Research, and an authority on different types of plague, discourages people from making pets of squirrels and other flea-carrying rodents.

The Gila River Valley is not a plague area, but the disease has been found here, Theodore Ryan, sanitary engineer, stated. He also warned against the residents picking up stray dogs. This valley is an endemic area for rabies. In event a resident should pick up a stray dog he is advised to take it to the authorities for disposal.



FIRST DAY

Due to various inconveniences and lack of equipment, Butte High School will commence Monday, October 19 at 8:30 a.m.

EQUIPMENT

Good news for the ears of our sports-minded young students...a large quantity of athletic equipment has arrived and is ready for use. Incidentally, the field adjoining block 43, still cluttered with dry brush, is the locale of the high school field.

FUTURE CARPENTERS

Oncoming weeks will view industrious high schoolers in the woodshop which is already supplied with necessary tools and materials...looks "right nice, too."

CORRECTION

An amended report from the Department of Education states that Mrs. Alice Hirai, and not May Hirai, is teaching the 8th grade at Canal. She is a graduate of the University of California at Berkeley.

LIL' BLACK SCHOOLHOUSES

Hunt, Idaho and Heart Mountain, Wyoming boast black tar paper schoolhouse...guess Gila students aren't so bad off!

REGIONAL MEN VISIT RIVERS

Robert Petrie, executive assistant to regional director of the WRA in San Francisco, arrived here Sunday and expects to stay until the last of the week studying the office organization of Gila colony.

Also here from the regional office was Larry Collins, regional chief of Community Enterprises. He came Oct. 6 and left Tuesday for Poston where he will aid in the organization of the Community Enterprises and Consumer Cooperatives.

While here, Collins conferred with James Shelly, project head of Community Enterprises, and met with the Canal Community Council Tuesday.

Adult Education Program Commences With Meeting on October 21

First session of the Adult Education program for Butte residents will take place at an open meeting Wednesday evening, October 21, at 7, the place to be announced at the Adult Education office, 43-5-A. Classes began in Canal last week with an assembly of over 500 people.

Organized by Roe H. Strickland, principal of the elementary school, 470 are already enrolled in Beginners' English and costume designing classes in Butte, and will take part in the meeting Wednesday night.

Most pressing need for both camps is leaders for the various classes. Persons with any experience whatsoever in accounting, architecture, sociology, science, and other subjects posted in the Adult Education office, are urged to offer their services as instructors. No teaching credentials are required.

Enrollment is open to all.

ACTIVITY REPORTS REQUESTED BY CAS

Activity applications required for all meetings and organizations in progress at Butte are available at the CAS office, rec. hall 56. Also required are activity reports in duplicate form after any event is held. Only two clubs at present are the Dukes and Victory Girls.

HENDERSON SUBS

John C. Henderson, housing supervisor, has been acting project director in the absence of E. R. Fryer, who has been in San Francisco the past few days conferring with national director of the WRA, Dillon Myer.

COMMITTEE EXTENDS CONTEST DATE

A committee of three composed of Masato Inouyo, Grace Hagiya, and Frank Sakahiro has been planning the rules and regulations of the forthcoming community beautification contest. The deadline has been extended to an unknown date to give the entering new arrivals a fair chance to compete. Separate contests will be conducted for Butte and Canal communities.

Walking Taught by Instructress

Miss Yuriko Amamiya and her dance pupils will present a dance demonstration program Thursday, Oct. 22, at studio 60 from 8 p.m. Correct walking will be part of the demonstration act which should prove both educational and entertaining. The public is cordially invited to the exhibition.

Girls Club Pick Mokuda as Prexy

Chizuko Mokuda was elected first president of the newly formed club consisting of former Los Angeles girls at a recent meeting held at the Young Peoples clubhouse, block 8 rec. hall.

Assisting her as cabinet members are vice-president, Susie Itomura; secretary-treasurer, Mary Waki; historian, Ayako Ohmawake; publicity, Kimi Sakamoto; athletic manager, Suzie Ude; assistant, Haruko Ishimine; co-advisor, Mrs. Ruth Ishii and Toshiko Sasaki.



WAITING LISTS

Most popular books at the library, revealed Midori Morooka, head librarian, are "Kings Row" by Henry Bellman and "And Now Tomorrow" by Rachel Field.

"RAINBOW AT DUSK"

To all readers of Emily Loring's books, her latest, "Rainbow at Dusk" may now be obtained at the Butte Library.

PUH-LEEZE!

An urgent request for more donations has been issued in order to increase the present reading matter. Remember, future donor, generosity is always rewarded!

Postal Regulations of Colony Changed by New Army Rule

Observance of certain set rules and regulations by the Butte postoffice is requested of residents, stated Paul Farmer, superintendent of Rivers Postoffice.

The full name and address of the sender should appear on all mail, especially those sent to detention camps; C.O.D. orders should be avoided due to inconveniences on the part of the postoffice and the sender; parcel post shipments should not be sealed; two cents postage is required on mail sent between Butte and Canal communities; outgoing mail should be in by 2:30 p.m.

New Army Ruling

Deliveries of parcel post packages through the block manager will no longer be in effect under the new army ruling, disclosed Paul Farmer, superintendent of Rivers Postoffice.

All packages must be inspected by the proper authorities prior to delivery service. Notices will be issued to claimants upon the postoffice's receipt of the package. Canal hours are 8:30 to 11:30 a.m. for distributing parcels, and in Butte, 1 to 5 p.m. has been the set hour.

Vital Statistics

BIRTHS

- October 12
To Mr. and Mrs. Ben Toichi Tanaka, a son.
October 13
To Mr. and Mrs. Shigeo Horiuchi, a daughter.

MARRIAGES

- October 15
Miss Yachiyo Taramoto, 23, to Tetsuzo Mori, 25.
October 17
Miss Tomoko Fujii, 19, to Nobuo Matsumoto, 32.

The second meeting of the Drama Society under Masato Inouye, will be held at rec. hall 56 today at 3:30 p.m. The meeting is opened to the public.

Meeting tomorrow at 42-5-A from 2 p.m. for present and past J.A.C.L. officers. Nobu Kawai to preside.

Rally today at rec. hall 74 from 2 p.m. for boys and girls between 13 and 15. CAS Club Directors Mary Obata and Jiro Oishi will conduct the group.

CANAL STORE OPENS MONDAY

Shoe and dry goods store is tentatively scheduled to open this Monday in block 16-11, stated Gilbert Karamitsu, community enterprise manager.

The opening date was delayed since the locale of the trading post was not set. The shoe repairing shop will operate from next Saturday, it was announced.

NOVELTY DANCE ON TAP SATURDAY

Under the capable showmanship of Yoshio Okubo, emcee, the novelty dance of the season will be held at mess 52, beginning 8:30 p.m. Late comers after 9 will be charged five cents per couple. It is imperative that guests shroud themselves in G.I. vestures, drape shape or otherwise to carry out the theme. Jeans will be tolerated.

Entertainment by Jerry Macyama, the Hawaiian orchestra, and Tad Yamamoto will be the highlights of the evening's frolic, door prize included.

Marital Problems Studied by Adults

Adult classes in marriage problems and mathematics will commence at Canal, Monday at 7 p.m., it was announced today by Mendel H. Lieberman, director of Adult Education.

John M. Landward, counselor, will instruct the marriage problems class. Details are available at the Adult Education office, 13-11-A.

Students interested in algebra, geometry, trigonometry, and other phases of mathematics will hold their first meeting in 13-10-D.

Beginning Monday, classes in costume designing and fashion arts will be held in rec. hall 24 from 7 p.m.

CLUB REQUESTS DRAFTEES LISTS

Draftees with honorable discharges are requested by the Ex-Service Men's Club to leave their name and address at 57-11-A immediately.

Those having a son, husband or brother in the Army should bring the absent person's name and address to the above place.

ASAKURA APPOINTED

Taki Asakura has been appointed assistant housing supervisor for Butte by J.C. Henderson, supervisor of housing and employment.

Rivers Sabbath Schedule

Butte Buddhist Services	Time	Location
Sunday School	9 a.m.	Church
Young Buddhist Assembly	7:30 p.m.	Church
Adult Evening Service	8:30 p.m.	Church
<u>Canal Buddhist Services</u>		
Sunday School	9 a.m.	Church, mess hall 12, rec. hall 9
Adult Evening Service	8 p.m.	Church
Young Buddhist Assembly	8 p.m.	Women's Club
<u>Butte Christian Services</u>		
Sunday School Classes	8:30 a.m.	
2-8 yrs.		Mess hall 59
9 yrs. up		Chapel 59
14 yrs. under		Mess hall 51
15 yrs. up		Chapel 40
English Worship Services	9:30 a.m.	Chapel 40
Japanese Worship Services	10:30 a.m.	Chapel 59
Pilgrim Fellowship	7 p.m.	Mess hall 43
Evening Services	8 p.m.	Chapel 59
Youth Fellowship	8 p.m.	Chapel 40
<u>Canal Christian Services</u>		
Sunday School	9 a.m.	Public School
Japanese Sunday Service	9 a.m.	Church
English Service	10 a.m.	Church

Poultry Farm Planned to Supply Communities' Egg Need

The Farm Management today released plans for the housing of 15,000 laying hens, capable of providing the entire egg needs of the community. Under present plans, the proposed poultry farm will be erected near the well, supplying water to Butte.

Preliminary drawings of the buildings have been completed by Art Matsuura, farm architect, and it will be sent to the regional office for approval. If priority ratings can be met, the poultry farm will be provided with incubators, heating units, and all other necessary equipments.

More Gila Crops For Kitchens

Providing Dame Weather does not veer off her course too far, from the temperate climate now being enjoyed, fresh peas, beets, and turnips will be ready for the colony cuisines next week.

Tom Hirashima, senior recorder of the agricultural department, reports that these vegetables grown on fields 48 and 69 will see harvest in the coming week.

30 Day Food Supply On Hand

According to Frank W. Harding, chief project steward, a 30-day food supply is always on hand at the Rivers communities.

Food for December is purchased in October, approximately 50 days ahead.

Variety Revue by Farm Management

Age of ages in variety shows will be unveiled next Monday and Tuesday nights when the Farm Management presents its gala talent revue and mass rally, the starting time being scheduled at 7:30 o'clock.

The entertainment will be held before Butte audiences on Monday night in front of mess hall 52. Tuesday night the revue will be presented in the open lot between block five and twenty-three at Canal.

SYMPATHY NOTE

Deepest sympathies to Farm Supervisor David A. Rogers in the passing away of his mother.

Farm Management

COLONY PASTURES PRIVATE HERDS

Information received from Farm Supervisor David A. Rogers reveals that the care of the 6000 odd head of cattle grazing in the open lot between the two communities is the responsibility of the Farm Management. Under a contract term, the cattle owned by private individuals is to be cared for by the colonists, the project being paid between four and six cents per head for each day.

To provide food for this herd, the agricultural department is planting one thousand acres of barley in farm units one and two, located two miles east of Canal.

SAITO SWITCHES TO LIVESTOCK JOB

Alterations in the office personnel of the Farm Management were announced this week. Joseph Saito, assistant farm supervisor, has transferred to the livestock division, and will have jurisdiction over all poultry, dairy, and hogs. Senior Cost Accountant Grant Ishikawa will take over the responsibility of office management while maintaining his present position.



Today we inaugurate a new column—a column that, full or entertaining, boring or refracting, represents the biggest single project of the Gila Relocation Center, THE FARM. We shall attempt to depict to you, through this column the more intimate phases of the farm and its personalities—everyday occurrences that add a touch of glamour to a deservingly activity.

FOR INSTANCE—we marvel at the display of energy which prompts men, women, yes, and even children to slyly carry home a sack of cucumbers or radishes after the field has been deserted by workers. Well we used to know a family back home who raided the household icebox at night, and then loudly lamented the fact that there was nothing to eat for breakfast.

ONE MAN BOOSTER OF aspirin sales is Personnel Director Kay Nebusada. Having elevated the sorely needed labor recruitment from 400 workers to 550, Kay now finds the bottle neck to farm expansion is the transportation problem.

CAMP PAY DAY WILL be celebrated by the Farm Management with a barbecue tentatively scheduled to be held on a hillside in Butte. We speculate on the advantages of a mass recruitment of farmettes to round out the evening's fun.

TEMPERATURE READING

	Low	High
October 1	63	99
2	68	100
3	63	98
4	62	98
5	60	95
6	63	99
7	64	98
8	66	95
9	66	90
10	68	96
11	69	94
12	64	92
13	55	91
14	50	83
15	51	86
16	50	

Courtesy of Farm Project

Special guest for the evening will be Acting Project Director E. R. Fryer who will deliver the keynote address. Also slated to speak is Herold Sanojara, agricultural maintenance supervisor, who will outline the farm project, its accomplishments and its needs.

Entertainment chairman for Monday night will be Charlie "Red" Tibbels. Amusing Canal's show the following night will be Izzy Otani of Tulare Assembly Center fame.

October 17, 1942

Page 7

NATIONAL LEAGUE CROWN AT STAKE TOMORROW

Hot pyrotechnics will be displayed tomorrow at 10:30 a.m. on diamond 3 when the dangerous 23rd Block Heads take on the refulgent Scorpion aggregation.

Nipped by a close 7-3 count in their initial engagement with them, Mike Iwatsubo and his Block Heads backed by the Nakamura brothers will be fighting for a revenge and the National League championship.

Another crowd drawing tussle will be the play-off for the American League, which has the L.A. Bulldogs, Gila Cyclones and the S.J. Scrubs, deadlocked on top. One of the teams will enjoy a bye while the other two outfits tangle.

The quartet of Elisterbugs, Firemen, Kingsburg and Rough Riders tied for Fourth will pair off and also battle to stay in the Big Five.

Seemingly well-liked fifth place of the National will be disputed among the disappointing Ochi Brothers, Walnut Grove Solons, Sanger Apaches and the amazing Spitfires on other diamonds.

52 Mess Tackle Bulldog Five

Mess 52 will take on the potent L.A. Bulldogs in a cage contest this Sunday at 2:30 at rec. area 62 court.

The Bulldogs will enter the affray as heavy favorites over the less known mess 52 aggregation.

Bulldogs Mess 52
S. Inouye f S. Utsunomiya
T. Nagayama f T. Kamen
C. Mayeda c S. Mizukami
Y. Furukawa g H. Kondo
K. Hashimoto g A. Matsushita

Site For Sumo

The Sumo dojo has finally been built. Its site is in the fire-breaks between blocks 55 and 51 near the main entrance to the camp.

Night practices will be held as soon as the lights are available.

MAEDA, INAI URGES SIGN-UP

A call for volleyball and basketball teams has been issued by Goro Maeda and Helen Inai, CAS athletic directors.

The Men Volleyball League will be composed of block teams only with the probability of block courts with lights being used.

With four more basketball courts planned for construction under Ken Yorioka, director of services, Miss Inai announced that deadline for the Senior Basketball League sign-up is this Wednesday.

TEN MESS LEAGUE TEAMS ENTERED

Putting aside their caps and aprons, the Mess Softball leaguers with ten teams entered, are having keen competition every morning after their inaugural game last Monday.

Mess balls 3, 6, 7, 9, 21, 23, 25, 24, 26 and 27 comprise the league.

Games on slate for next week are as follows:

Monday-3 and 24 vs. 21;
Tuesday-25 vs. 23, 7 vs. 3,
and 26 vs. 9.

Wednesday-7 vs. 21.

Monday-6 vs. 3 and 24 vs. 21.

Tuesday-25 vs. 23, 7 vs. 3,
and 26 vs. 9.

Wednesday-27 vs. 21 and 6
vs. 24.

CANAL VOLLEYBALL SCHEDULE

Monday-19

Riverettes vs. Victorettes
Sangerettes vs. Starlettes
Sugar Puss vs. White Shirts

Tuesday-20

Canal Aces vs. Walnuts
Jinxes vs. Pantherettes

Wednesday-21

Slugg'ies vs. Gila Babes
Canal 10's vs. V-6's
Mmes. vs. Sky Rockettes

CANAL'S FIRST GRID PRACTICE

Sixty-strong turned out for the first touch-tackle football practice called by Coach Demoto of the Canal High School Wednesday, on the football field west of block 6. Although the programs are not scheduled, with the aid of Assistant Harry Osaki, practice will be held daily after school. This turnout proved that there are quite a few huskies and therefore a good team will soon be formulated.

Since many had been prep stars, undoubtedly, we will find good competition in the two camps. Japanese athletes in high schools on the coast were very outstanding and with these boys gathered together from all points of California, the caliber of the games and the strategies of the plays should far exceed those of smaller high schools anywhere.

Butte Volleyball to End Monday

In Butte girls' volleyball, the Tularettes take on Alhambra, second place Turlock meets Teensters, and the undefeated Hi-Jinx tackle French Camp on Monday to wind up the league.

The girls' athletic directors request that all girls' team sign up for the softball league now that volleyball will terminate Monday night.

HORSESHOE SLINGERS PITCH FOR CROWN

The round robin singles horseshoe tourney tomorrow afternoon will reveal the champ of Canal Camp.

Leading the thirty odd contestants at present are George Ikeda, Hide Yamashiro and Sod Kobashi.

Next Sunday, block 27's pit will be the scene of the doubles' slinging contest.

Music Hour

Mas Oji will chairman tomorrow's Music Hour to be held in Chapel 40 at 3 p.m. Colonists and Rivers schools faculty are cordially invited to attend.

NOTICE

Found: Pink sweater at rec. area 62. Call at rec. 56.

SPEEDY LEATHERNECKS RATED GRID FAVORITES

The Leathernecks loom as pre-season favorites in the six-man football league which will get underway in the near future. They have beef plus the essential speed to be rated favorites.

Following closely will be the Green Waves, potentially the best aerial team.

However, the Commandos, Sweetpeas, Bulldogs and Zeros, can under the right circumstances, upset the Green Waves for No.2 slot.

In the lower division, the emphasis is on speed, The Areops, Pachooks, Thunderbolts and 52 Mess Hall bank on speed and a fairly good passing offensive.

The Sidewinders and Gila Indians will probably field the heaviest teams, both being capable of putting out a 135 pound team.

The Arizona Indians and the Courier Demons will be the aerial-minded squads.

Canal Notice

Individuals who have checked out softballs, bats, footballs, volleyballs and other CAS equipments before October 15 must return them by this Monday noon, or be subject to a fine. Due to the fact that there is a shortage of equipment, it was deemed necessary to do this.

Another ruling effective from today is that any persons who fails to return their equipment within a day will also be faced with a fine.

Sports Feature

GILA STAR PARADE

JIM ISHII...West L. A....starred in track as a consistent 12 footer in the bamboo event for his prep school, Manual Arts in L. A....won greater fame as professional ice skate racer in recent years...1938, participated in Chicago Silver Skate Race representing Southern California Skating Association...placed third in total point in the Southern California Silver Skate final in '39...won AAU Southern Coast 440 championship before turning professional last year...toured Pacific Coast with Doug Ware, one time National Junior AAU champ, in exhibition races till war started...ended undefeated, including the Bakersfield Six Day Marathon which they won by 13 laps.

HARRY OSAKI...Fowler...gained recognition as tennis artist and hoopster in prep school...went on to Fresno State, receiving medals in intramural golf and tennis...took school badminton trophy, earned berth on Northern Collegiate tennis champ team and golf team at Washington State...captained archery team that won the National Intercollegiate Championship held at Washington last February...beside setting a national record for the 30 years, the team also hung up a national scoring record...recorded in school's Who's Who in Athletics.



Oct. 17, 1942

Page 8

Pasadena Meets Dukes Tomorrow

Pasadena will make its second pre-season court appearance tomorrow against the Dukes at 4 p.m. at 62 rec. area court.

The starting lineup:

Dukes	Pasadena
G. Hayakawa	F. T. Yamanaka
H. Sakaji	F. T. Itow
J. Hiratzka	C. K. Mikuriya
Y. Kikuchi	G. J. Nakayama
S. Hagiya	G. R. Hiroto

Duke roster: S. Okamoto, H. Suzuki, F. Fujii, S. Nakashima, B. Yamanaka, H. Yamanaka, T. Utsunomiya, S. Okazaki and Y. Matsushita.

Pasa. roster: Y. Mikuriya, S. Goto, J. Kurita, J. Matsumoto and F. Itow.

DANCE SCHEDULE

New dance schedule for Canal enthusiasts is as follows: Monday from 7:30 to 8:30 p.m., for beginners; Wednesday from 7:30 to 9:30 p.m., advanced students.

SPORTS SIGHTINGS

S.T.

•Your reporter received a letter from a sports fan concerning the column of October 10 on Coach Roy Esaki's football team.

•That fan feels that Yours truly had just climbed out on the limb to blow off steam. However, Yours truly feels that it's vice-versa, and here's why:

•He feels that because he had never heard of the boys, they are no good. Should all good football players submit their names to him?

•He asks if we would stack up money against Phoenix or Tucson High. That can be arranged as soon as the game is.

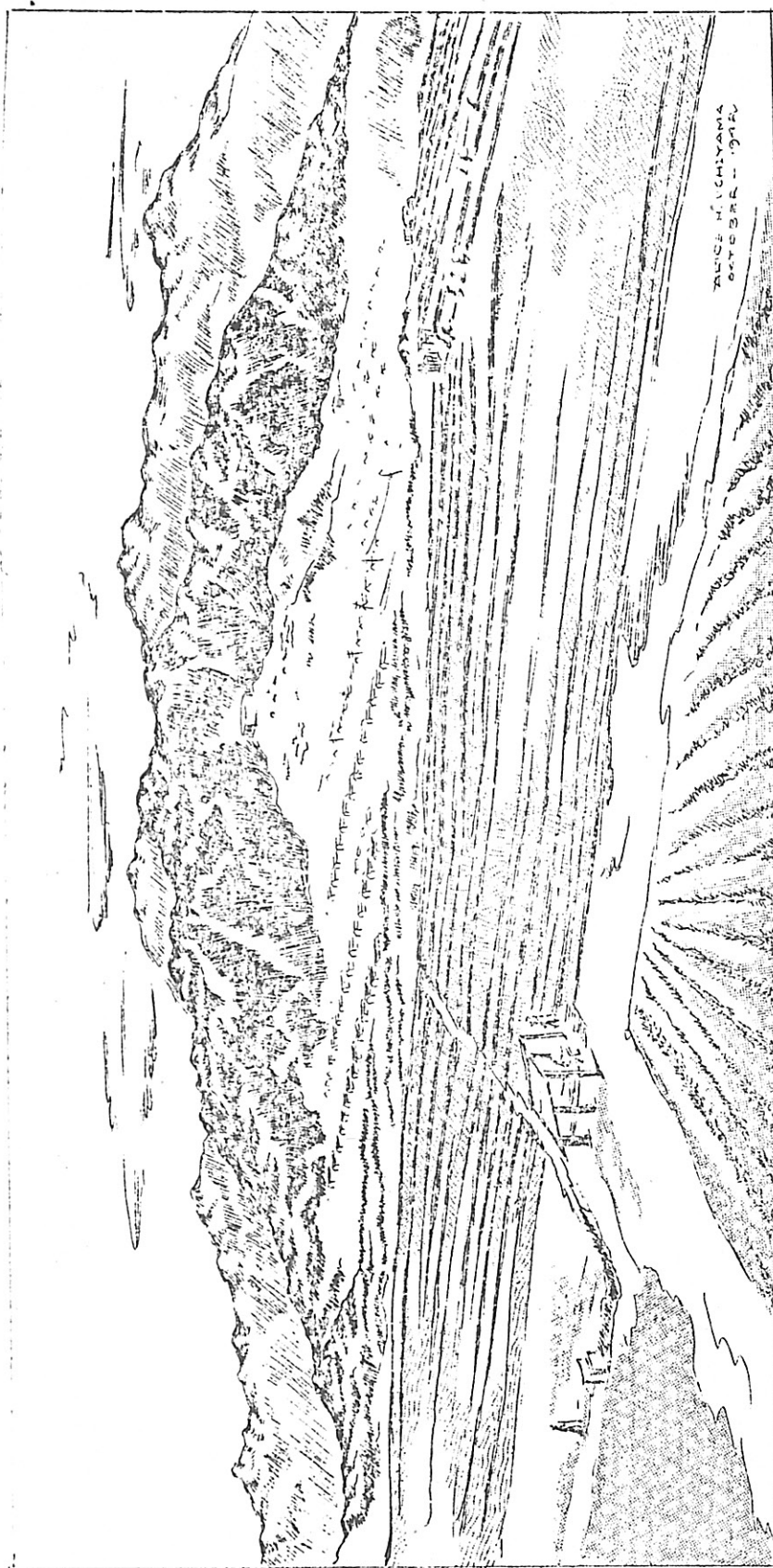
•He also wishes to have the team compared with L.A. City College; and he doesn't see anyone on our roster who compares with Jackie Fellows. Firstly, L.A.C.C. is not a J.C., and as for Fellows, we'd like to see our ardent sports fan name a player in L.A.C.C. or any J.C. who compares with that star. After all, he is tabbed as the "Player of the Century," and such players do not grow on every tree.

•This fan also takes for granted that we had stated that our team should play top-flight teams of the nation. Such is not so. Yours truly had merely meant that we had exceptionally fine material under the circumstances. If we were not under these circumstances and had the equipment, the coaches, the trainers, then, the story, without a doubt, would be quite a different one.

•He goes on to say that he feels that the other centers have better teams than ours. We have never said otherwise, but we have our doubts. That still doesn't make Phoenix or Tucson better than us or keep us from giving jaysees a run for their money.

•Well, Mr. Fan, what do you think now?

As for Yours truly, the statement, "our team is out of the classes of most prep teams and would give jaysees quite a bad time," still goes!



SERIES I NO. 5

Agricultural Field East of Butte

RIVERS, ARIZONA

Aided by natural fertile soil, warm climatic conditions and sufficient irrigating water, the Rivers communities' rich agricultural land is depicted in this scene which is only a portion of the vast 2,000 acres. Located in the southern portion of Arizona, Gila will soon give stiff competition to any farmer in vying for the state's "Glad Bowl" title.

ALICE H. LICHYAMA
OCTOBER - 1912

ある今後共栄里の里民は、刀を棄て、
平和から平和の道を行くことを乞ふ。

