

## FRYER HERE AS SMITH RESIGNS DIRECTOR'S JOB

Eastburn R. Smith has resigned as director of the Gila River Relocation Project; according to an announcement today from administrative headquarters.

Mr. Smith came to the Gila Project last April shortly after the announcement that a relocation project would be built here. He had previously been Assistant Regional Conservator of the Soil Conservation Service in the Southwest Region with headquarters in Albuquerque, New Mexico.

Mr. Smith plans to return to his Albuquerque home early next week. He will be accompanied by his wife, Mrs. Anne M. Smith, who has served as Counselor of the Project.

Pending the appointment of Mr. Smith's successor, Mr. E.R. Fryer, Regional WRA Director in San Francisco, will be acting director of the Gila River Project.

# GILA News Courier

VOL. I NO. 3

RIVERS, ARIZONA

## COLONISTS ASKED TO HARVEST ARIZONA LONG STAPLE COTTON

Urgent appeals to evacuees at the Gila River Project to volunteer for employment in picking Arizona's long-staple cotton crop--a vital commodity in building combat equipment for the United Nations--came today from several federal government agencies.

The Western Defense Command and Fourth Army has given special approval to the employment of evacuees in Maricopa and Pinal Counties for picking of the long-staple crop. The Gila River Project is located

### Block Removal Schedule Given

Blocks 41 and 43 will be used for schools the administration reaffirmed. A petition submitted by Block 73 requesting 41 be reserved for the residents of 73 was rejected for various reasons. Blocks 39 and 40 as originally scheduled will be reserved for the residents of Blocks 73 and 74.

(continued on page 8)

in Pinal County while Maricopa County, lying north and west of Pinal County, includes the rich Salt River Valley, centering around Phoenix.

The United States Employment Service following a survey of labor needs and supply for moving the vitally-important long staple crop has certified that local labor sources are insufficient and that evacuees at the Gila River Project offer the only means of meeting a critical situation.

From E.R. Fryer, now acting project director here, came an urgent request to evacuees "to volunteer for a job that's every bit as important as serving in a uniform."

Fryer emphasized "that Arizona's long-staple cotton ranks with tin, rubber, copper, steel, and many other strategic materials in building the machines of war. One of our important sources of long-staple cotton--Egypt--lies within an important war zone where Axis submarines are cracking at our supply line. We must conserve every ounce of our domestic crop."

### JACL Officials Back Labor Drive

From national headquarters of the JACL in Salt Lake City, came an earnest appeal to evacuees to volunteer for the long-staple harvest. Copies of the Pacific Citizen carrying the JACL appeal are being distributed throughout the Gila River Project with WRA cooperation and assistance. Distribution is under Nobu Kawai, 58-18-C.

## WOMEN URGED TO WORK

A round-up of information for evacuees revealed the following developments:

1. The first group of 200 pickers, about 100 from each camp, will be moving toward the cotton fields about 6 a.m. on Monday morning. They will be picked up at mess halls in Diesel trucks, equipped with seats, and transported to the Thornburn and Smith properties, about 30 miles south of the Gila Project. They will be returned to the project each evening before 8 o'clock. There is no charge for transportation.

2. Arrangements are being completed to serve an early breakfast at 5:15 a.m. to evacuees working in the cotton fields and also a late dinner at 8:30 p.m. To start with, one mess hall will be open for these special meals at each camp. Later, as more workers take such employment, other mess halls will be opened.

3. A lunch will be prepared by Community Enterprises and available workers at the mess halls.

4. No charge will be made for the subsistence of dependents who volunteer for cotton picking. Each worker, however, will be charged 15 cents for breakfast and 15 cents for dinner which is the government's present food cost. In addition, Community Enterprises will supply workers with a box lunch at 25 cents.

5. In addition to cotton pickers the Thornburn and Smith properties have also requested evacuees as truck drivers, row bosses, weighers, and cashiers.

6. Surveys indicate most growers in the vicinity of the Gila Project cannot furnish food and shelter and almost all workers, therefore, will be furnished transportation back and forth each day.

7. The standard rate of pay will be \$3 for a hundred pounds which means 3¢ a pound.

8. Women as well as men are urged to volunteer for this important patriotic duty, WRA officials emphasized today.

# GILA News-Courier

Published every Wednesday & Saturday  
Distributed without charge to every room  
Extra copies available at News office

Editorial & Business Office: 57 Rec. Hall



## LETTER TO THE EDITOR

Sept. 17, 1942

Dear Editor:

Last night in my perambulation through the Center, I was much amused by the frantic efforts of the evacees to "kipe" lumber from piles that are marked for use in the construction of buildings. I was equally amused by the not infrequent and just as frantic whistles of the guards who are placed to guard these piles.

Came a time last night, however, when I became considerably less amused.

After a particularly persistent round of whistling (the same employed by officers at street crossings with which we were familiar a long four months ago) near where my aimless wandering had taken me, a Caucasian guard flashed a flashlight on me and came up brandishing a club. He was quite incensed. I was quite uneasy.

I questioned his menacing attitude. He with a Texas drawl explained that some fellows had been heaving stones at him. In his tirade against the fellows he said that he couldn't shoot them (he was unarmed) but that he could send them to a prison on the outside. I observed that assault and battery was a serious offense.

As I say I was not amused, and certainly I dislike the thought of a repetition of the incident.

A Worried Jap.

Good thing that the colored construction workers leave early, no question as to who is in the woodpile.--ED.



## SIGHTS FOR SORE EYES

It is generally agreed that most of the building sites are eyesores at this stage of the city's growth. Staff Artist Uchiyama has accurately sketched one cluttered corner of our city that in a few months (minus the clutter) will be part of the Gila High School, Butte branch.

Her able pencil will then again, via a stylus and stencil and mimeoscope, depict to News Courier readers, that there have been some changes made. Save these series of pictures. Pasted in your kodak album, they serve as documentary evidence of the days when you loaned your camera to the government to help the fight for freedom. Our "Unfinished Street Scene" in last Saturday's issue might have looked like an obstacle course for Commandos, but a month will tell a different story.

Those little "black houses down in back" or "back houses done in black", for they are just that, are restricted for the use of Caucasian workers on the project. However, we are most surprised that some of our habitual agitators who yell "discrimination when the beef is under-done, or the lights or water are turned off for a little while, didn't moan about that. Our workers are modern. Looking back to the title of this article, we hasten to remark that the assorted habiliments of the populace are sights for sore eyes, lest we be accused of being pun-ny, when we are really very serious.

## HI-LO FLYERS

When we first came here, the heat was terrific, it was dustier than it is now. We used to follow the shade, moving a cot around the house. We would lay on the cot, gasping what we thought at the time might be our dying breaths. We remember watching one day, way up in the blue sky, a big black bird of some sort. Truthfully, we don't remember if the sky was blue, it was that hot, but we do remember asking a peregrine, near expiring friend "what kind of a bird it was. We remember his reply was like a dash of cold water, for he said, "It's one of those dam buzzards waiting for us to die."

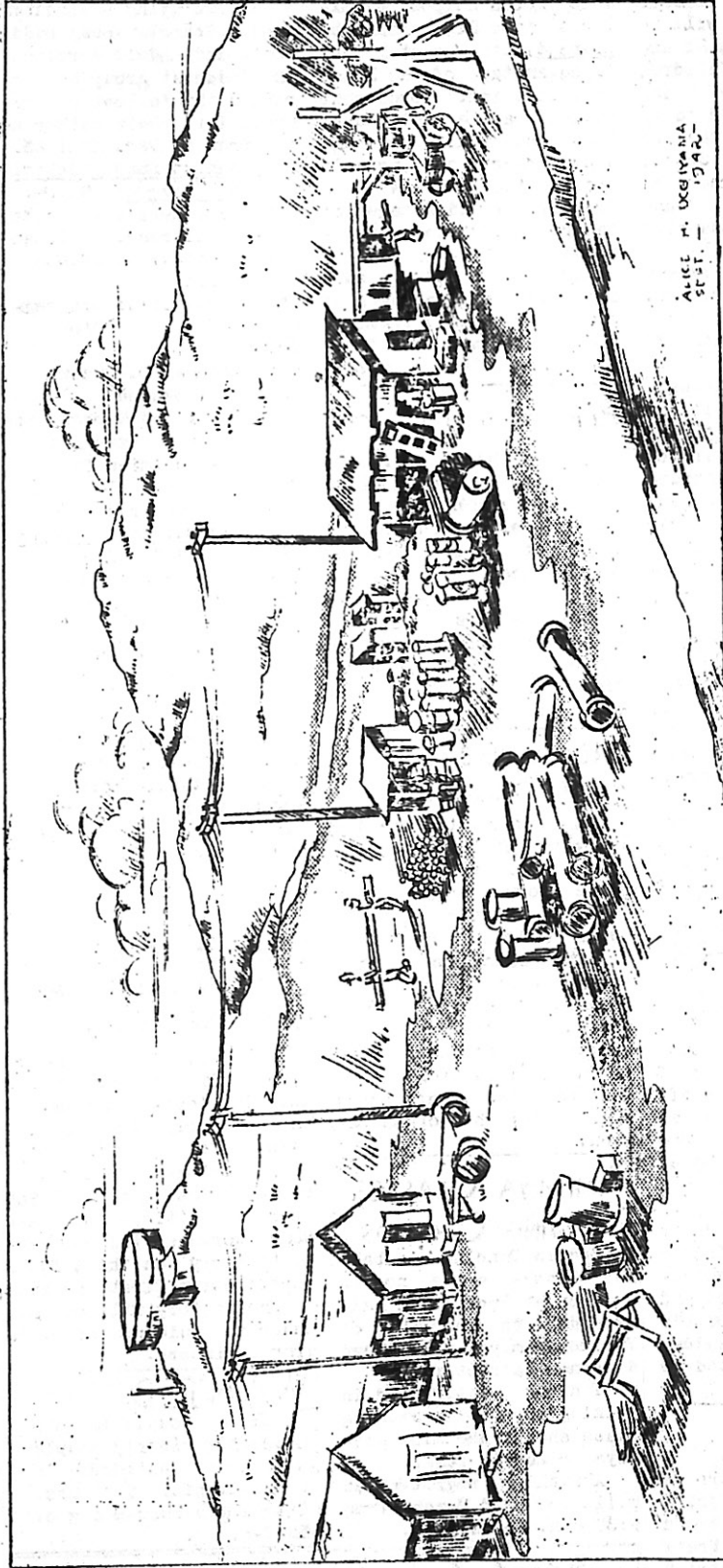
Well, the succeeding weeks have been cooler, we have recovered enough to do a little work now and then, even to ask for second helpings at mess, and we haven't seen a buzzard for weeks.

One thing still disturbs us. Those Army planes that zoom down close to the roof-tops every so often. We have read that there are Chinese pilots training at a field some thirty miles from here.

We know the guns aren't loaded and if the youngster pilots feel a little more realistic if they can play at strafing a city whose upturned faces reflect the color of theirs, it's all right with us, as long as the buzzards and the planes don't come over together.

The thing that bothers us though is that there might be some babies sleeping, or some sick persons, that the unnecessary roar of the planes might awaken or disturb. If the young pilots want to play soldier, they should dive over the ag. fields, the irrigation workers could stand a little diversion.

"Procrastination is the thief of time."



ALICE H. URBIVANA  
1942

SERIES 1, NO. 2

HIGH SCHOOL SITE

RIVERS, ARIZONA

From this scene of construction sheds, pipes, lumber, and general disorder, will arise the formation of our Gila Relocation Center High School. Located around the northern half of the Butte, it will be the permanent site for all high school activities.



## SCHEDULE TOLD FOR CHRISTIANS

Sunday School classes for the Christians will be held in Mess Halls 51 and 59 at 8:30 a.m. Children between the ages of 2 and 14 years are invited to go to the nearer of the two kitchens. Sunday School Seniors, 15 to 17 years of age will go to #51. Young people and young married couples are invited to Recreation Hall 40, reserved for Christian services.

All Sunday School classes will begin at 8:30 a.m.

The Japanese language worship service will be held in Mess #52 at 8:30 a.m. The English service will follow this immediately, at 9:30 in the same room. The public is cordially invited to attend any or all of these services.

## Guest Speaker

Guest speaker for tomorrow morning's Christian Young People's services will be Doctor Clarence Gillett from Santa Maria, California.

He will address the group at 9:30 a.m. A fluent speaker, Dr. Gillett was a frequent visitor of the Tulare Center.

## SCOUT LEADERS HOLD MEETING

Butte Camp Boy Scout Leaders, consisting of Junior, and senior staff and scout masters, met at Recreation Hall #39 recently. Mr. Morton J. Gaba, CAS Director, was guest speaker for the evening.

Plans were compiled to recruit 500 boys into the Butte Boy Scout Organization. Senior leaders and scout masters from the Guadalupe and Pasadena Troops were appointed to head the recruiting.

## BUTTE RECRUITS

All boys, 12 years or older, interested in joining the scouts are asked to get in touch with Frank Sakahiro, Scout District Commissioner, at Recreation Hall 39. All scouts are under the supervision of Bob Handa.

## PREPAID FRUIT BOXES FRESHEST

Fruit and other perishable goods shipped by Express into Gila should be prepaid, it was stated by T. Nagamatsu of the Motor Pool Division. Goods sent collect are delayed at least one full day, and since there are no cold storage facilities at Casa Grande, the advantages of the prepaid method are obvious.

Arrival of package cards and the stated amounts of money should be taken or sent to Nagamatsu at Warehouse 18-1, Canal Camp.

## Run On G.I. Duds

Former Tulare residents who have failed to claim their government issue clothing are requested to do so at their earliest convenience.

Under the supervision of Taki Asakura and 18 volunteer workers, distribution is conducted at Recreation Hall 72 between 9 a.m. and 5:30 p.m.

## DRUM AND BUGLE CORP ORGANIZED

At present, the only activity of the Butte Boy Scouts is the Drum and Bugle Corp, organized in Tulare. Practicing two hours each day, and led by Hiroshi Takusagawa, the Corp, composed mostly of Guadalupe boys, are expected to demonstrate their ability to the Canal Camp in the near future. Pasadena has also contributed a group to the organization.

## AMEMIYA CLASSES DRAWING CROWDS

Modern Dancing and ballet classes are now in session at Recreation Hall 60 under the tutorship of Yuriko Amemiya, well known dancing instructor.

Those interested in joining the day or evening class should see Miss Amemiya or Cherie Yusa.

Another registration will be held Monday from 8:30 a.m. to 12 noon.

## Butte Buddhists Initiate Program

Inaugurating their first Sunday School, Young Buddhist, and Adult services, the Buddhist group has arranged the following programs for their gathering tomorrow at Rec. Hall 63.

### Buddhist Sunday School

Service Program: 9 a.m.

Chairman: Masaji Inoshita

Opening Address: Chairman

Gatha: Hotoke No Kodomo

Meditation

Three Treasures: Congregation

Oshoko

Sermon: Rev. D. Suzuki

Gatha: Ondokusan

Story Telling: George Yamashiro

Gatha: Namu Amida Butsu

Presentation of Teachers

Sayonara: Congregation

### Young Buddhist Program

7:30 p.m.

Chairman: Roy Tashima

Prelude: Young Buddhist

Choir

Invocation by Rev. Imamura

Gatha (Hymn)

Homages

Meditation

Buddhist Reading by Michiko Yamamoto

Young Buddhist Choir

Sermon by Rev. Imamura

Gatha

Benediction

Closing Gatha-Ondokusan

### Adult Services

8:30 p.m.

Sermon: Bishop D. Ochi

## COTTON RATES CALL OVER NET WORK

Luke J. Korn, Assistant Project Director, stated Thursday that, although it is too early to say anything definite on the camouflaging netting factory, he believed that about 900 American citizen men and women workers will be needed to carry on the defense work, cotton first, he said.

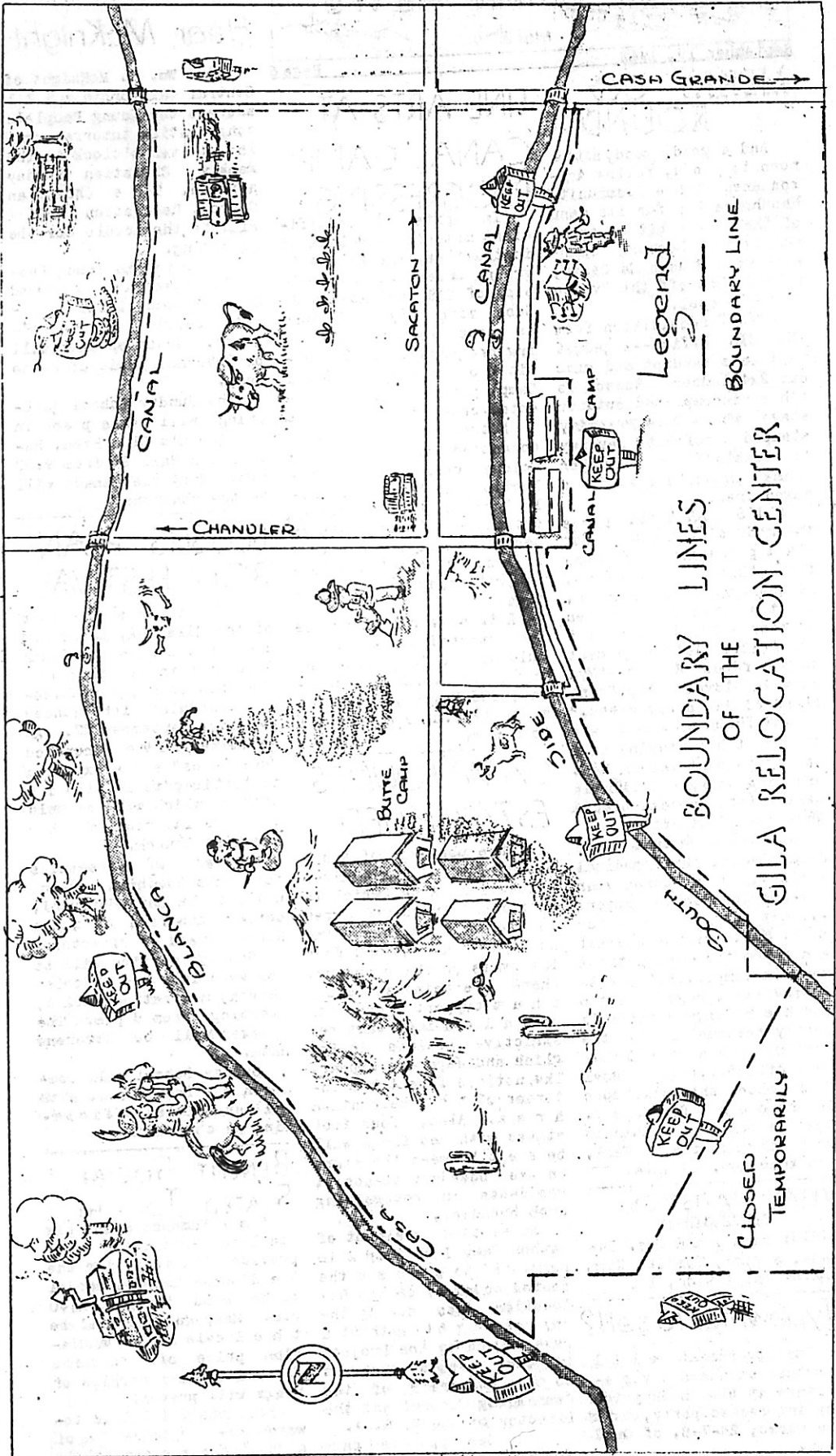
The factory will operate under the guidance of U. S. Army Engineers.

## WANTED

Nisei couple to keep house for elderly couple, without children in Pennsylvania. See Mrs. Charlotte Susu-Mago, 52-9-c.

## Block Locations

CANAL CAMP ~ BLOCKS 1-27  
BUTTE CAMP ~ BLOCKS 28-75



Legend  
 --- BOUNDARY LINE

BOUNDARY LINES  
 OF THE  
 GILA RELOCATION CENTER

CLOSED  
 TEMPORARILY

← CHANDLER

SACATON →

CASH GRANDE →

CANAL

S CANAL

CANAL CAMP

BUTTE CAMP

SIDE

SOUTH

BLANCO

CASH

KEEP OUT

KEEP OUT

KEEP OUT

KEEP OUT

KEEP OUT

## MERRY GO ROUND

And a good, good, afternoon to you, fellow Arizonians. The community hashhouse has for its menu of the day a bit of this and that liberously sprinkled with Madame Ga Ossip, served hot off the "voice of the peepul."

LATEST requisition from the CAS office--a gadget that eats sawdust and burps out 2x4 lumber. Reason is the incompleated outdoor stage, where Dame Priority stamped a definite nay nay to Construction Manager Frank Onishi's plea for a sawed tree.

SLIPS A LA ADRIAN are the mode of the day for camp lassies. It seems that this little gadget, so indispensable to women, came into its own when Arizona's tempest swept the frilly little garment to the fore. Result--"My, what a lovely slip." instead of "a lovely dress."

FAR THINKING MALES are urging the staging of a beauty pageant before heat and wind changes California belles into Arizona blacks. What say, Centerites?

DID YOU KNOW that Doc Jack Sleath, chief medical officer, is a three year all-American soccer player? ...that project Director E. R. Smith is the busiest and yet the most patient man in camp...that petite interviewer, Peggy Kato and her Colgate smile is partly responsible for the waiting line at the Employment office...that a Canal Camp shoe shop will open in the next few days... that writing a column is work and not play? Well, you know now. G'nite.

## VITAL STATISTICS

SEPTEMBER 15

BIRTH: To Mr. and Mrs. Sakata, a girl, Toshiko Hila.  
DEATH: Seiiji Wada, 15.

## Typewriter to sell?

The government will purchase standard typewriters at blue book price. Any interested party, contact Ida Otomo, 26-7-B, of Canal Camp.

## FINE ARTS AT CANAL CAMP PROGRESSING

In spite of insufficient material and lack of instructors, the Fine Arts group, under the supervision of CAS and Morton J. Gaba with Kiyoko Hosoura as group leader, is showing progress in their Music Hours at the Canal Camp, planned to be presented once every two weeks.

Future programs will be conducted voluntarily by Colony residents, the selections to be chosen mainly through the suggestions, criticism, and requests on behalf of all music enthusiasts. A selected soloist will play from time to time.

A trial art class has been started under the guidance of S. Inaba, meeting every Monday, Wednesday, and Friday, from 8 a.m. to 12 a.m. and from 1 to 5 p.m.

## CAMP BOUNDS ESTABLISHED

The posting of the boundaries of Gila River Relocation Area, which is approximately 15,000 acres in extent, is now being accomplished. At 500 foot intervals on the boundary, there are being set posts that support signboards on which important restrictive notices in English and Japanese appear. The notices face the interior of the Relocation Area. Also, four foot stakes with red flags will be set between the signs on the boundary to assist residents in recognizing such boundary.

No evacuee resident of either Camp I or Camp 2 is permitted to cross the posted boundary of the Relocation Area during the day or night without a pass signed by the Project Director issued pursuant to the authority of the Commanding General and the Director of the W. R. A.

See opposite page for full particulars.

## Christians To Hear McKnight

Rev. Wm. Q. McKnight of Central California will address the Young People's congregation tomorrow morning at ten o'clock in the weekly Christian Sunday service. The Christian Church, Recreation Hall 7 will be the locale for the gathering.

Prior to the Young People's gathering, Reverend So will conduct the Japanese service at nine o'clock. Guest speaker will be Reverend Tsuda of Butte Camp.

The Sunday School gathering will take place in the Women's Club Room, Recreation Hall 24 from 9:00 a.m. Marjorie Sanada will be the chairman.

## BUSSEIS PLAN 'BON' FESTIVAL

Under the sponsorship of the Gila YBA, plans are now under way in Canal Camp for the staging of a mass bon odori, tentatively scheduled for Sunday evening, September 27. An estimated five hundred "odori-kos" are expected to participate in this affair which will be held outdoors in front of the Buddhist Church.

Master of ceremonies for this Buddhist pageant will be Shig Horiuchi, acting chairman of the Bussei Board of Directors.

Sunday service will be observed in the Buddhist Church, Recreation Hall 4, starting from 8 p.m. The speaker will be Reverend Hata.

Sunday School will commence from 9 a.m. with Lillian Shimizu officiating as chairman.

## BENEFIT SOCIAL SLATED TONIGHT

Sak Yamashita and his Starlite Serenaders will provide the music for the Red Cross benefit social to be held tonight, 8:30 p.m. Mess Hall 16 will be the locale and an admission price of ten cents for either couples or stags will prevail.

Proceeds will go towards the organization of a Red Cross chapter in Canal Camp.

## SMITH'S DEDICATION ADDRESS STRESSES FAIR PLAY TO ALL

### Editor's Note:

The following is the text of Project Director E. R. Smith's address to the Canal Camp Buddhists last Sunday, September 13.

"It is proper and fitting and moreover significant that the first public building to be dedicated in this community should be a church.

"Throughout the ages and in all lands a religion has been the single force which has given comfort and strength to most people. Many of the people who settled this country endured great hardships and faced great dangers in order to insure that their children and themselves could worship as they saw fit. In these present days our government is equally concerned in the preservation of important values throughout the world, among which freedom of religion is one.

"In testimony of this effort on the part of America, it is interesting to examine the situation which exists in this community. Consider a religious group which in this country occupies a minority position, but which in this community occupies a majority position. May I suggest that to this existing superiority in number there attaches a corresponding responsibility—a responsibility to insure that all denominations, no matter how small in numbers, are given an opportunity and equal chance to worship as they see fit. This thought should be kept continuously in mind by all of those who influence church policies.

"With the successful dedication of this church there are in proof the chances of this community for making more rich and full the lives of its residents."

## CANAL CANTEN COUNCIL

On September 9, a council comprising of at least one business man from each block was appointed by Sholley, Director of Community Enterprises. By request of Sholley, the above committee met on the same day to nominate an advisory board to assist Sholley in certain decisions concerning business management of the Community Enterprises. Election of the advisory board was held on September 11 and the following were elected on the temporary advisory board: George Sakai, Kay Nobusada, George Kawahara, I. Imamura, and F. K. Kodama.

However, in order that the council be selected in a more democratic way, the council unanimously requested that it serve only until the Block Council elect one experienced business man to represent them on the Community Enterprise Council and a new

advisory council will be elected by the newly elected council.

## CAS DIRECTOR VISITS TUCSON

CAS benefited by Supervisor Morton Geba's trip to Tucson on Wednesday. The CAS head says that he met University of Arizona faculty members and Y.W.C.A. Officers who have promised to donate equipment and time for colony activities. Noteworthy contributions are books and magazines to the colony library by the University of Arizona, and lamps, tables and books for clubrooms by the Tucson branch of the Y. W. C. A.

Dr. Haury, Director of the Arizona State Museum will present series of talks on "Indian Life in the South West." He will also direct and advise the building of a museum for Gila River, says Geba.

## SHORTER HOURS FOR IRRIGATION

Project Director E. R. Smith requested that all irrigation from the domestic water supply be confined to two one hour periods; between ten and eleven o'clock in the morning and 4:30 and 5:30 in the afternoon. This is necessitated by the limited domestic water supply.

A separate source of irrigation water will be developed as soon as the necessary equipment can be purchased and installed, Smith stated.

## SIGN-UP FOR ADULT SCHOOL CONTINUES

The registration of the Adult Secondary School which began last Thursday will be continued until this Wednesday, including Sunday, 13-3-A at Canal.

Hours for registration are as follows: 9 to 11:30 a. m.; 1 to 4 p. m.; and 7:30 to 9 p. m. daily.

## PHYSICAL EXAM FOR MESS HALL WORKERS

All Mess Hall workers are asked to come to the Emergency Hospital at 1:30 p.m. for Physical Examinations according to this schedule:

Monday, Sept. 21: Mess Halls 54, 55; Tuesday, the 22nd: Messes 56, 57; Thursday, the 24th: 58, 59; Friday, Sept. 25: 60 and 61; Monday, Sept. 28: 64, 65; Tuesday, the 29th: 66, 72; and Thursday, Oct. 1: 73 and 74.

## PROPERTY SECTION TRANSFERRED HERE

"For quite some time the Property Section attempted to struggle along in Sacaton. We are now very thankful to be located on the project and appreciate the cooperation afforded us by all divisions. We in turn wish to offer our services and encourage all divisions to bring in their property troubles as we hope in the near future to have a smooth running section that will be of great assistance to the entire organization."

S. A. Faust



# CHIEF STEWARD HARDING MAKES PUBLIC STATEMENT

"I wish I could tell you, in this first message from our department, that everything has been smooth sailing and clear water. However, that would hardly present a true picture since we have and still are encountering many difficulties.

"Due to transportation tie-ups on the outside, many deliveries of food stuffs have been held up for several days. This naturally causes readjustments in menus which are unavoidable. Our schedules must be timed by incoming deliveries and this makes no one unhappier than it makes us."

In the department itself and in the various Mess Halls, certain adjustments have had to be made. In the best interests of all concerned, certain regulations have had to be imposed, for instance, in the matter of eating at assigned Mess Halls. These things we hope to iron out gradually until the whole organization is working smoothly and in perfect harmony. We are here to serve you and keep you well fed and happy and we are doing our utmost to accomplish this."

Our Staff has worked very hard from the beginning to maintain an even output of foodstuff to the

kitchens, and have done a commendable job. My assistants in Camp #1 is Mr. Harold E. Keagle and the rest of the Staff consists of Eddy Yamada and Eddie Uyemura, Senior Stewards; Josuke Ikeda and Tom Ehara Senior Storekeepers; Ben Iida, Supervisor of Cooks; Steve Hamada, Senior Rationer; Ben Ehara, Head Produce Man; F. Iwana, Head Butcher; T. Kinoshita Head Staple Man, K. Hikido Head Milkman; and I. Morishita, Head Ice man. The Staff in Camp #2 consists of my assistant, Mr. Forrest E. Brown; Tom Iiyaya, Senior Steward; Kay Yamamoto, Senior Storekeeper; F. Imura, Head Produce Man; J. Inadomi, Head Butcher; Victor Nakahara, Head Ice and Milk man; J. Hatanaka, Truck Dispatcher, Toshii Kawai, Head Rationer and R. Iwata, Receiving and Outgoing Talleyouts."

In closing, I wish to state that anyone interested in knowing how foodstuff is delivered to our warehouses, and then from the warehouses to the kitchens, is welcome at our office in Warehouse 18-1 and learn the details of Mess Operations from qualified personnel."

Frank W. Harding  
Chief Project Steward

# JEST BORROWED

Juicy tid-bits from other colonies reveal....

A Postonian resident who hasn't claimed a MELON at their express office... & a creature! For the women... a fashion show (how's about showing us some "dustless" apparel?) and a beauty shop to "overhaul" the weaker sex....

F.P.C.'s Grapevine writes of a slated "Min-strel Show." No doubt they've attained (not unlike us) the appropriate color for such an affair. Their reporters journeyed to our former abode... Tulare Assembly Center... and speak well of everything from our flower gardens to "Lovers' Lane." Hot-headed egotism impels us to remark... "naturally!"

Engagements are being announced despite relocation to Heart Mountain, Wyoming and Granada, Colorado, which is still being conducted right under the Santa Anitans' noses. Well, that's Santa Anita for you... oblivious to all Farewell parties are, still on the rampage... heard they "do it up fine"..... That's right... "Put on the dogs!"

Hunt, Idaho's Minidoka Irrigator ("fawncy" moniker!) boasts of a newly constructed 16 wing hospital... such a monstrosity! Guess they're going to fill all the wards!..... A plogios... just a SLIGHT jealous streak in our veins.....

"Park College President Wins Fight to Retain Nisei Student" headlines the Pacific Citizen... good 'nuff!

Schools in Manzanar occupy 18 barracks... Well, Manzanar, "too hold tight (but not too tight!)" till our "Halls of Learning" are erected.

## TULARE PAY SOON

"All former Tulare Assembly Center residents who have August pay-checks due, can expect them through the mail early next week," said Earl P. Watterson, head of the pay roll department.

Checks have arrived and are now being made.

## Plea By Block Residents of #73

(continued from page 1)

With the partial nullification of the former arrangement that Blocks 73 and 74 would move to 40 and 41, although the status of 40 will remain unchanged, 39, instead of 41, will be made available. These two blocks are ready for residences; however, a delay in the arrival of mess equipment is temporarily holding up their movement.

After the vacation of 73 and 74 Blocks, most of Block 16 from Canal Camp, composed largely of the members and families of the hospital staff, will be moved to Block 74.

## PAINTING JOB CUTS CANAL CLINIC HOURS

Due to the fact that painting is being done, the hospital clinic in Canal Camp will be open only during the hours of 8-10 a.m. Monday. From Tuesday the regular hours will be resumed.

## Let's Dance!

"We are planning to make this dance the best one of all and a surprise is in the bag for all," remarked George Kanegaki, chairman for the weekly Saturday night dance to be held tonight at Mess 41. An admission of 5¢ is being charged; patron and patroness will be revealed at the dance.



## BILL OYAMA SPEAKS

"In behalf of the CAS staff, I wish to explain the delay in the recreation program building.

At present we are using s'c'r'a'p lumber. Our main set-backs are nails and tools which are vital materials for man. As soon as we can get these vital materials, construction will be in full swing and we hope to supply everything needed for the recreation halls and areas."

Bill Oyama  
Construction and Maintenance Dep't.

Horse Shoers  
Vie In Tourney

Wednesday, September 23, is the last day for sign-ups for the Canal Singles and Doubles Horse Shoe Tournament. At present 20 shoe tossers have entered in the singles division with 13 pairs for the doubles.



A meeting of all those planning to participate in the tourney is planned for Sunday, September 27, 1 p. m. at the CAS Office.

THIRTY ASPIRANTS  
DO WEIGHTLIFTING

Thirty weightlifting enthusiasts, the majority members of the Tulare Barbell Club have been continuing their training and body building each night since arriving in Gila Relocation Center.

The equipment which includes barbells and weights are personally owned by the club members. At present the trainees have been under the tutelage of Johnny Ishimoto, Suso Saito, Nob Wakumoto, and Kenji Ota. Anyone interested in daily workouts are welcome to the use of the equipment and instructions by the persons mentioned above at the home gym located at 47-9-C.

Volley Ball Holds  
Spot Light On  
Butte Recreation

The recreation program of Butte Camp still continued at a snail pace with the lack of building materials and facilities being the factors for the progress. The spotlight at present shines on the nightly practices of the girls' volleyball teams at Block 59 under the direction of Ruby Kirita.



Lots 62 and 71 which went under leveling processes last week, awaits watering by the Butte Camp Fire Department before any recreational activity can be exercised. When and after the fields are watered, sport enthusiasts will find backstops and softball diamonds on these lots.

Another boost for this community's recreation came in the appointment of Shig Goto, who will direct Boy's Organizations. Goto hails from Tulare Assembly Center and its recreation department.

## SPORT FEATURE

## GILA STAR PARADE

● NOBORU "CHINK" DOI...hails from Central Cal... brought recognition to little Parlier Hi through outstanding track achievements...one of the four-men Japanese squad that captured the Fresno County, San Joaquin Valley, and 20-30 Tulare Relays' "C" title for two consecutive years...specializes in high jumping...boosted his Northern Y Olympic "F" leaping record made in '36 to 5 feet 10 inches last year...capable of broadjumping well over 21 feet...member of Parlier Card track team that dominated Y Olympics and Central Cal Olympics for a number of years...established a new record of 5' 11" in his speciality at the latter meet in '41.

● ROBERT UTSUNOMIYA...Santa Maria...one of the most outstanding Japanese swimmer at Santa Maria Hi...two year varsity letterman...C.I.F. class C freestyle champion and school record holder...former J.A.U. freestyle champ.

● NAGAO FUJITA...Oxnard...two year football letterman at Oxnard High...chosen most valuable player in his junior year...injuries denied him of football in his senior year...attended Ventura Jayces and University of California.

● GEORGE HAYAKAWA...Pasadena...Active squadman in football, basketball, and track...specializing in track...qualified in the 100 and 220 yard dashes of the C.I.F. finals but could not enter due to evacuation...capable of covering the century in 9.9 seconds and toured the furlough in 22.8 which is really stepping it...also played basketball for the Goshawks and Crown City.

CANAL CAMPERS  
PLAN BASKETBALL

Linger up, basketballers. That is the call heard from the Canal Camp CAS Office which has in foresight a cage league after the Ice-Breaker schedule completes its round. The hoop squads will be divided into an Aye and Bee league.

Also planned is a Commercial Softball League, eligible only for those players working in departments such as firemen, mess halls, warehouse, canteen, hospital, will be formed. All persons interested are requested to contact Goro Maeda at the CAS Office.

## FIRST TALENT SHOW

The first Butte Camp public performance will be a combined community sing and talent show, slated for Wednesday, September 23 at the Recreational Area at Block 62.

# NINE ENCOUNTERS SCHEDULED SUNDAY FOR ICEBREAKERS

Nine softball games are scheduled in the Canal Ice-breaker League on Sunday.

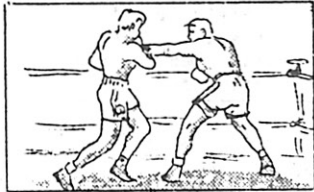
In the American League, starting at 8 a.m., the following games are scheduled: On Diamond 1, Aggies meet Block 7, at 10 a.m.; on Diamond 5, Dust Stormers meet the Bulldogs; and at 6:45 p.m., Firemen vs. Blisterbugs and Rowdies vs. Cyclones on Diamond 2 and 5 respectively.

In the National League, the Solons meet the Scorpions and Giants meet Gophers at 8 a.m. on diamonds 3 and 5; at 10 a.m., Blockheads vs. Wildcats and Cactus vs. Salt Peters are scheduled to clash on diamonds 3 and 5; Spitfire vs. Gila Nines is the 6:45 game on diamond 3.

The remainder of the released schedule, the Roughriders crossbat with the Firemen on the 22st, and Kingsburg meet Aggies on the 22nd.

## BUTTE PUGILISTS RECEIVE GLOVES

Slow but sure in acquiring equipment, Butte Camp's Boxing Gym will re-



sound punching bag rhythm soon. At present, one heavy bag and two sets of gloves include the equipment in the gym located at Recreation Hall 55.

To assist instructor Dick Miyagawa will be Richard Miyashiro, one of the outstanding Nisei professional boxers of Hawaii. The last two years has seen Miyashiro enter the famous rings of Baltimore and Madison Square Garden. Before turning professional, A. A. U. Featherweight Champion of Hawaii was his title.

## SPORTS

### ROUNDUP

R.Riders 5, S.J.Scrubs 4  
G.Gophers 10, Spitfires 10  
Scorpions 18, A.Giants 5  
Solons 11, A.Wildcats 4  
Gila Babes 6, B.Cards 9  
Fowler H.R.12, S.Babes 9  
G.Bears 16, L.A.Midgets 3

## NEWS-COURIER Sports

### GIRLS' VOLLEYBALLS COMMENCES TUESDAY

With the girls' volleyball league ready to get underway on Tuesday, Sept. 22 at 7:15 p.m. at 62 Recreation Area, practices are being held daily near 59 Recreation Hall with Ruby Kirita, Girls' Sport Director, in charge.

A managers' meeting was held with seven teams represented, on Sept. 19, at 10 a.m. in 56 Recreation Hall. Discussions were held on rules and regulations of the volleyball games and teams were chosen to play for the first initial game.

Two new teams, Teensters and the other unnamed have joined the league, raising the total of teams to seven. Teensters consists of: Pola Komai, Helen Morita, Yoshiye Nakamura, Fumi Anraku, Violet Nozaki, Sachiko Higa, Chita Iwamoto, Akiko Yamamoto, Helen Yamamoto, and Louise Nagai; while the other team boasts on its rosters: Miyoko Kido, Shizue Kido, Kay Momma, Yoshiko Hasegawa, Mitsy Hasegawa, Toshi Haramoto, Kimiko Shimizu, Anna Oishi and Grace Oishi.

### CAS EQUIPMENT INCREASES STOCK

The Community Activities Section now boasts of a stock room full of equipment which will be put into use in the near future. The equipment consists of 8 volleyballs and nets, 6 basketballs and hoops, 6 shotputs, 6 footballs, 6 medicine balls, 8 soccers 6 baseball gloves, 24 tennis balls, 132 ping pong balls and 10 nets, 81 softballs, 17 softball bats, and 40 ping pong paddles.

CAS director in charge of equipment is Toshisa Goto.

## SPORT SIGHTINGS

BY S.T.

Rumors are fluttering hither and yon to the effect that Bud Mukaye will be sumo instructor for Butte Camp, which is a pretty good idea for he is a sumo artist of high calibre.

While in Los Angeles, Mukaye was crowned Southern California champion. He also was the champion of Santa Anita Assembly Center.



This is still unconfirmed news but it is a pretty good choice should it come true. What do you think?

Let's talk of pigsk in prognostication for the remainder of this column.

Most sport pages will be carrying their crystal gazer's "who'll beat who".

Coming down to brass tacks, what is football prognostication? Take for instance, the nation's No. 1 prophet, Deke Houlgate. He figures 'em out mathematically.

However, are Hougate's prophecies set on a more infallible foundation than those of other prognosticators?

That certainly is a debatable question, but is it not true that every prognosticator's prophecy is his expectation of a team's potentiality?

In other words, your choice is as good as anybody's, providing you know football well and leave a lenient lee-way for upsets. And if yours is as good as any, you tell us who'll beat who.

### GOH AND SHOJI CLUB CONVENES AT HALL 61

Recreation Hall 61 is the daily rendezvous for Butte Camp Goh and Shoji artists. At present, approximately 200 have signed to play this oriental pastime.

At Present Tosh Goto, CAS temporary Director of Halls has placed Mr. Oishi in charge. Twelve tables include the furniture of the clubroom and when more are made, tournaments will be held.