

# GILA News-Gazette

VOL. I NO. 9

RIVERS, ARIZONA

October 10, 1942

## Special Pass Issued Citizen

A special pass was issued by the Western Defense Command to permit Alice Kikuchi to leave the Gila colony and go to San Luis Obispo, California, where her father is being hospitalized.

Kikuchi became ill while enroute to this city from Tanforan with part of his family to join Charles Kikuchi and other members of the family who had preceded him here.

### TANFORAN ARRIVALS

The arrival of 21 transfers from the Tanforan Assembly Center on Wednesday was slightly delayed due to a train wreck ahead of them while enroute to Rivers.

Four members of the party of 27 originally assigned to the Rivers project, arrived earlier on the same day. A case of mumps forced Raymond M. Inouye to temporarily forego the trip.

## Yeaton Resigns as CAS Head

The resignation of CAS Director, Robert Yeaton, was accepted October 8.

L. T. Hoffman, chief of community services division stated, "We regret to lose the services of Robert Yeaton, who has contributed much toward organizing of a bigger and better community."

## Block Forty-nine Leads Registration

A check-up late yesterday of steps in the elections for Butte's temporary Community Council showed that 6 of the 21 occupied blocks have not yet submitted their list of candidates.

Block registrations vary from a low 10 to a high 144 in block 49. Highest number of candidates listed is 5 in block 59, block 56 with 4 is runner-up.

## WRA Official Pledges Defense Of Evacuees Citizenship Right

Telegrams exchanged between the solicitor of the WRA and the regional office have quickly and effectively dispelled rumors current to the effect that Congress has adopted a bill abolishing the citizenship status of nisei and another bill providing for the internment of all evacuees. The text of the solicitor's telegram follows:

"I understand that rumors are circulating that Congress has adopted a bill abolishing citizenship status nisei and bill providing for internment of evacuees.

## Butte Hospital Opening Delayed

The opening date of the new 200-bed hospital at Butte Camp remains indefinite due to non-delivery of necessary equipment. Only infirmary facilities available at present in the community are at the Canal Hospital, capacity 20 beds.

Utilization of medical facilities at Sacaton has been due to the inadequacy of supplies within the camp, and colonists should recognize the fact that "the doctors are well trained and are entirely capable of taking care of the health needs of evacuees," remarked Jack C. Sleath, chief medical officer.

## Tanaka Lauds Fine Cooperation

Zuke Tanaka, mess worker placement head, reports excellent cooperation on the part of block managers and chefs in facilitating the large labor turnover necessitated by the new ruling which established 30 years as the minimum age for mess hall workers.

## TULE FARMS SHIP PRODUCE HERE

Tule Lake farm projects have shipped a total 1,490 units of produce to Rivers cities to date. Warehouseman F. Kimura has checked in along with other vegetables which combine to make the amount 353 crates nappa, 316 beets, 188 lettuce, 302 turnips.

These rumors are not true. They are probably due to a misunderstanding of a bill recently introduced in Senate to amend Federal Constitution to permit Congress to regulate conditions under which persons subject to dual citizenship may become citizens of the United States. That bill has not passed. It has merely been introduced in Senate and referred to a Committee. It would take a two-thirds vote in each House of Congress and ratification by three-fourths of the State legislatures to adopt such a Constitutional amendment. Congress has not adopted any legislation that would deprive evacuees of citizenship or would provide for their internment. The WRA recognizes and will defend the citizenship rights of those evacuees born in the United States. You are authorized to inform the evacuees of the contents of this telegram."

The date of Stockton arrivals to Gila was indefinitely postponed, but according to a letter received by a resident, 175 evacuees will leave the center about Oct. 16. From Fresno, 150 are expected the same day.

Canteen opening day at block 42 has been changed to Monday, Oct. 12, instead of today, Jun Toguri revealed late yesterday.

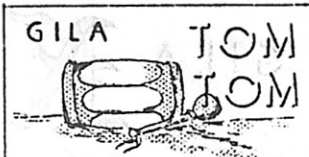
Do not send in your absentee ballots before Oct. 14.

Kibei meeting tonight at block 63 Buddhist Church at 7:30 o'clock.

# GILA News-Courier

Published every Wednesday & Saturday  
Distributed without charge to every room  
Extra copies available at News Office

Editorial & Business Office: 57 News Room



Some sixteen autumns ago we were just beginning to study a college course that touched briefly on the precepts of a man named Freud, who as the youth of those days would have it, preached that the three strongest urges of man were his desires for shelter, food and, -- love is the word we will use.

We were told before coming here, that life in camp centered around food recreation, and -- love, shelter being provided.

If the letters we continue to receive are indices to the colony's suppressed desires, food and the way it is served continue to be of paramount importance. We receive letters on recreation, religion, but love seems to be doing all right in its own little corners without letters or advice from the editors.



It is regrettable that 56's Chef Maeda was almost boycotted as a result of some letters to the editors. We had run portions of four letters, one of which had praised Maeda for a worthwhile innovation he had sponsored in mess 56. The other three letters called attention to some undesirable conditions elsewhere in camp.

Some extremely sensitive souls, presumably office workers, took all four letters very much to heart, and straightway with words not gentle took up the fancied insults with Maeda, who was blameless.

Camp life must render some souls unduly touchy. There are many offices, many workers, many mess halls. If the complaining workers are not guilty, let the matter ride. Surely, a boycott of 56, a pleasant place to eat, for diners remove their hats, will not correct conditions elsewhere.

## Opportunities For Youths

WE ARE happy to see that so many able and capable youngsters will be released from mess hall work for other jobs that will afford them better occupational training for a post-war world.

## Work To Eat - Eat To Work

IN THIS war-torn world there is an increasing call and demand upon the people. The call for food is second to none. America's call for food to feed her people and her Allies becomes louder and louder with the passing of each day. The food problem becomes more and more acute as the available farm labor supply is diminished by the call of men into pressing military services. Secretary of Agriculture Wickard has warned the nation that the farm labor shortage this year is a small matter compared to the inevitable great labor shortage that is obvious next year. Unimaginable as it may seem, there will be shortage in two years even in this country of "great food abundance." This problem is indeed not only a headache but a promising stomachache as well.

Fortunately for us, we can parry off the blows of food shortages, at least of vegetables, for we are blessed with abundant land and water to raise them. We have well-qualified men to supervise the growing of crops. We have machinery to do the work. We have a climate that makes possible the growing of food in seasons where it has failed in most parts of the country.

As in the "outside world" we are short of labor. Unlike the "outside world" this problem is not due to the shortage of unavailable farm labor supply. On the contrary, we have a large pool of available farm labor...not inexperienced, but in most cases experienced labor. But, unfortunately, response of workers to meet this important call has not been adequate.

The crops need to be harvested...valuable crops are just there for the picking; crops need to be thinned and transplanted, irrigated and cultivated. If sufficient workers are not available, it might be necessary to plow under some of the plantings. The problem is that serious!

The production of food is the greatest project here at Gila for without food, our well being will be diversely affected. We've got to eat well to be well. If we fail to heed the call for food producers we "cut our own throats" so to speak, for good vegetables are becoming more and more difficult to get from the "outside."

This week the residents of block 5, 26 and 27 in the Canal Camp volunteered for farm work and spent several days thinning beets and white radishes. A work which is vitally necessary if we are to eat beets and white radishes. This sort of effort is needed all around.

If you are not employed, do a good turn by volunteering for farm work. By doing so, you will not only be helping the people in this community, but your fellow evacuees in other centers where vegetables are not being produced. Brother...and sister, we need you.

---T. H.

## KNOW YOUR DISEASES

Residents have been urged by Jack C. Sleath, M.D., chief medical officer to make the distinction between Valley Fever (Coccidioides) and tuberculosis, two entirely distinct and separate diseases. "Valley Fever cases," he stated, "can be cared for at home and mixed with the general population without fear of spreading the disease."

## Watterson Leaves To Enter Service

Earl P. Watterson, who as Senior Administrative Officer, headed the procurement, property, cost accounting, fiscal accounting, and audit departments, resigned on Oct. 8. He will enter the military service in a special service unit after the termination of a thirty-day leave he has been granted to clear up his affairs. R. S. Slawson has been appointed successor.

## Committees Of Constitutional Commission Set At Meeting

Members of committees of the Constitution Commission were selected at their second meeting Wednesday, October 7.

The committees and its members with the chairman named first follows: Block Council-Kay Nobusada, Teizo Yahanda, Frank Sakamoto; Community Council-Yotaro

## Mas Oji Heads Music Council

The first music program was attended by approximately 200 persons Thursday night at Chapel 59. The second Music Appreciation Hour is Sunday, October 18.

Mas Oji heads the council as president, while Tak Ogino was elected vice-president. The full time secretary position was left open until a later date. Masato Inouye, Ayako Matsumoto, Mas Oji, Tak Ogino, Mrs. Jane Imamura, and the Rev. and Mrs. R. Susu-Mago comprise the committee to draft a constitution.

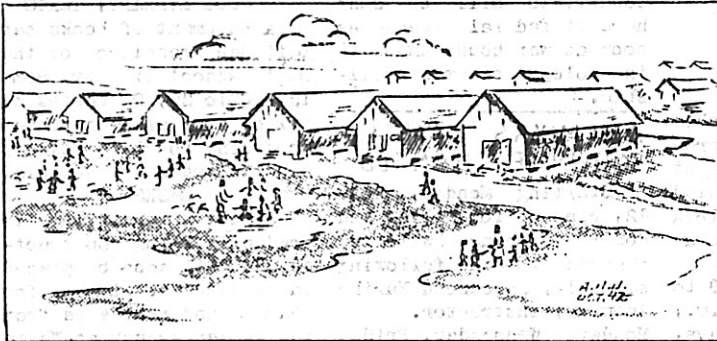
Distribution of Tulare G.I. clothing is being conducted at rec. hall 72.

Okino, Nisuke Mitsumori, Shotaro Hikida, Howard Hayama; Arbitration Commission-Frank Sasaki, and Judiciary Commission-Ken Utsunomiya, Joe Omachi, committee on Preamble was not named.

It will be the policy of the Commission to call in any person as a consultant before the Commission or its sub-division. Chairman Joe Omachi submitted the names of Karl Iwanaga and Shin Hiraoka, attorneys as legal aides.

## MEETING TONIGHT

An important meeting of all kibe young men and women is being called tonight at 7:30 in the Buddhist Church with George Yamashiro presiding. Plans for organization and future activities are the main topics of discussion for the evening.



## NURSERY IS BUILT FROM SCRAP WOOD

Two Gila Project nurseries have been built out of scrap lumber on site across the canal opposite the Canal Camp.

Nursery 1 is managed by Itaro and Daniel Nakata, well known chrysanthemum hybridizers for the past 20 years, of Tracy, California. Among their notable feats is the development of a new, large, yellow variety of chrysanthemum which they have named "Golden Treasure" and on which they secured a plant patent in 1940. This patent gives them the exclusive 17 year rights for the propagate for sale of the mum.

## Canal Camp Adult Classes to Start

Adult education activities for Canal Camp opens Monday, October 12, for residents 18 years of age or over.

Classes in Americanization, art, commerce, drama, economics, current events, engineering, farming, folk dancing, first aid, public speaking, flowers, music, languages, mathematics, drafting, radio, science, home economics, and sociology will be conducted.

Similar classes for Butte colonists will commence, October 19, it was announced to the press yesterday.

## BLOCK 41

With improvements still to be made in the elementary school block, tots are still jumping over ditches and playing on the dusty grounds adjoining their classrooms. Let us hope future days will bring the necessary improvements for an ideal school environment.

## TEACHER ARRIVES

## Lieberman Heads Adult Education

Mendel Lieberman, adult education director, just arrived in the Canal Camp. Lieberman, formerly of Los Angeles, is a graduate of UCLA and has received a Bachelor of Law degree at USC. He has taught current events, English, social living in the Los Angeles night school program.

## SERVICE MAN

For seven months, he was in the infantry at Fort Ord, California. He was on the personnel of the army construction project in Arizona.



## LIBRARY NOTES

Heartening news to all readers of current best sellers... Butte library has joined the Book of the Month Club, which will provide Gilans with all the latest!

\*\*\*\*\*

New library cards are ready and temporary cards will be exchanged for those issued previously.

\*\*\*\*\*

New staff members in the library are Betty Hirokawa, Nancy Ikeda, Hanaye Ota, and Ichiro Yoshihashi.

\*\*\*\*\*

Cactus plants, water colors by Alice Uchiyama, and a Chinese stone carved graciously loaned by Bob Yeaton, former CAS director, in addition to 3 books, now adorn the book-room as decorations.

\*\*\*\*\*

Donations of books or periodicals are encouraged by Midori Morooka, head librarian. Any suggestions or requests are termed welcome.

## Opening Day For Canteen

The dry goods and shoe departments, transferred from the main canteen at rec. hall 58, is scheduled to open today at Block 42, according to Jun Toguri, manager.

Business hours are 9 to 11 a.m. and 1 to 5 p.m., Mondays through Saturdays, while on Sundays the store will open only in the afternoon.

## Serenaders To Play Tonight

Tad Yamamoto's Serenaders will be the feature highlight for tonight's dance at 8:30 in mess hall 63. Couples will be admitted free to the shindig before 8:30. After said time, five cents will be assessed everyone.

Encee for the evening will be Yoshio Okubo, who will entertain during intermission. Mrs. Fujimoto, women's clubs director, will be chaperon for the evening.

## Four Citizens Leave Gila City

Thursday, October 8 saw the departure of John Mitsumori, formerly of Pasadena, to the University of Nebraska at Lincoln, Nebraska.

The following day Frank and Shizuko Takayama and their daughter, Judith, formerly residing at 58-12-D, embarked for Littleton, Colorado where employment awaited them.

## Send For Your Stored Goods

Colonists who have privately stored household goods that they wish to have sent here at government expense must first make arrangements to have the goods transferred from private storage to the nearest federal warehouse from where such shipments can be made. Expenses for such a transfer must be borne by the individual. Goods thus placed in government warehouses in residents former hometown localities will be sent here at federal expense as soon as warehouse space in the colony becomes available.

## AMEMIYA'S DANCE SCHEDULE CHANGED

Starting Monday, Oct. 12, classes for ballet and modern dancing will be changed to the following schedule, announced Yuriko Amemiya, instructor.  
Monday, Wednesday, Friday 10:30-11:30 a.m. - mothers  
3:30-4:30 p.m. - gr. 1, 2, 3  
4:30-5:30 p.m. - gr. 4, 5  
Tuesday, Thursday 4:30-5:30 p.m. - gr. 6, 7, 8  
7:30-8:30 p.m. - adults, workers, and high school  
8:30-9:30 a.m. - gr. 6, 7, 8

## VITAL STATISTICS

### BIRTHS

Sept. 30 To Mr. and Mrs. R. Yamamoto, a girl.

Oct. 2 To Mr. and Mrs. George Yamakawa, a girl.

Oct. 4 To Mr. and Mrs. Sadao Kakutani, a girl.

Oct. 5 To Mr. and Mrs. Yasuo Fujimoto, a girl.

Oct. 5 To Mr. and Mrs. Suekichi Takeda, a girl; stillborn. Funeral services were held Wednesday.



## SCHOOL DAYS, SCHOOL DAYS!

Monday, October 12, all high school students will begin the diligent task of studying the 3 R's... Bonne fortune, mes etudes!

### REGISTRATION INCREASES

Total number of enrollments at the Canal elementary rose to 620, while 600 young heads were counted in grades 1 through 6 at Butte.

### OPENING ASSEMBLIES

Initial assembly was held for high school students at Canal Thursday morning to introduce the school semester with announcements, introduction of instructors, and songs. Off to a good start, let's see the rest of the semester continue on the same plan.

A similar assembly will be held Monday, October 12, for all high schoolers at Butte in block 43.

### SCHOOL LIBRARY, TEXTS

A shipment of books has left San Francisco for the Butte school library. Some 15,000 to 20,000 copies of texts are also enroute according to Lafe Nelson, superintendent of schools.

### DESKS

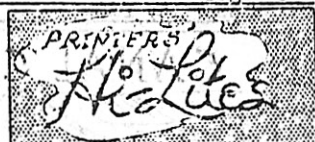
School furniture is gradually being constructed and will soon be placed in classrooms. Lumber for benches and tables is from the Indian Agency at White River.

## Age Limit For Mess Workers

Effective immediately, future applications for potwashers, dishwashers, janitors, and cooks' helpers will only be considered if the applicant is over 30 years of age, revealed F.W. Harding, chief project steward.

All residents who are already employed in any one of these capacities will be replaced as soon as possible. Adjustments in various departments necessitated this action, it was declared.

# Buddhist Church CAS Increases Dedication Rites Butte Personnel



In conjunction with the Buddhist Church dedicatory services, the recreation department is donating their services for a program which is tentatively slated for 8 p.m. at recreation area 52, where a special stage will be erected for this occasion.

Residents are asked to bring their own chairs.

The tentative program will be as follows:

Encee-G. J. Ycmashiro  
Opening address-Y. Hotta  
Speaker-L. T. Hoffman, CAS head

Vocal solo-Y. Tamura  
Hauta-Mr. Yamamoto  
Vocal solo-Miss Kawakita  
Satirical act-Mr. Takai  
Vocal solo-Mr. Terazawa  
Harmonica solo-M. Okamoto, Canal

Vocal solo-M. Oino  
Accompanist, Mrs. Hojo of Canal

Instrumental trio-Miss Yamamoto, Mr. Kobayashi, Mr. Otani, Canal

Dance-Kiyoka Shisho and her students

Drama-Mr. Isuzugawa, accompanist

Shakuhachi-Mr. Honma

Hawaiian songs-Hawaiian boys, vocalist, Dora Kuwabara

## PILGRIM'S FELLOWSHIP

All high school students interested in the formation of a Pilgrim's Fellowship, are requested to meet at Chapel 40 at 10:30 a.m. tomorrow.

To meet the increasing community activities, seven members were added to the Butte Camp's CAS staff this week. Kenji Ota and Jiro Morita have been assigned to care for the physical well-being of the people interested in taking exercises. Ota will be instructor of gym and barbell while Morita will handle calisthenics. Tosh Odano and Sid Inouye will assist in boys' and men's sports respectively.

Masato Inouye was appointed director of Fine Arts with men's clubs to be handled by Jiro Oishi. Issei women's organization will be under the direction of Mrs. Fujimoto.

## Administrative Mess Quarters

New quarters for the administrative mess, now serving approximately 70 Caucasian members, will be north of the administration building.

The problem of daily commutation to and from the camp will therefore be dispensed since all employees will live and receive their meals within the colony.

A staff of 26, including cooks, waitresses, clerks, dish washers, and hostesses is now employed at the kitchen.

Enviously we side glance at the worthy efforts of our competitors and pluck from their pages "itemites" to dazzle your weary eyes....

"It's Arkansas!" headlines Fresno Grapevine's extra...Hail and hearty to your Fresnoites! May luck and comfort be with you on your "juggling" journey...

Pacific Citizen, quote: Officials in either as nisei soldier visits California home...these Mongolians! No harm t'was done, and his furlough was well spent!

Bridge fiends in Gila should note a tournament for said card addicts which commenced October 4th at Rule Lake. To Ely Culbertson: Consultations needed immediately!

In the midst of a "hot" queen contest (ain't Postonians the ones?) the Press Bulletin puts forth a delectable article about that Japanese delicacy "tofu" which graces their dining tables....

A general information bulletin has arrived from Heart Mountain, Wyoming... which may be the beginning of another "Pacemaker"... chgeegosh!

Orchids to Merced's final issue...not a bad job, but personally, we Gilans (many of whom were former Tularians) faintly caught a Tulare "odeum" as we scanned the pages....

And to end this column, we bow before Santa Anita for their last issue (at least that's what we thought it was!) which came as a neat 22 page "pro" affair...Now that relocation is nearing its end, oh, Pacemaker, where will you rear your ugly head now???

## CHANGE OF ADDRESS

The Rev. Royden Susu-Mago has changed his residence to 52-1-A from 53-9-C. He has now established his church office there and will start a religious library. Rev. Susu-Mago will discuss problems with anyone wishing consultation.

Christian Church hymn practice, Chapel 59, 8 p.m. every Saturday.

## SABBATH SERVICES

### BUDDHIST

Sunday School 9 a.m.  
Pre-school, 6-7 Church  
8-11 years mess hall 63  
12-13 years mess hall 64  
Junior class mess hall 58  
Chairman - Ruthe Araki  
Sermon-The Rev. D. Suzuki  
Dedicatory Service 2 p.m.  
Chairman-Y. Tamura  
Okyo-Reverends  
Opening address-Chairman  
"Church Progress"-K. Sato  
Gatha-Nori-no-Miyama  
Incense offering-Representatives  
Welcome addresses-Roy Teshima, S. Nomura, E. R. Fryer, Buddhist Church rep. (Canal Camp)  
Raisanmon-Bishop D. Ochi  
Sermon-Bishop D. Ochi  
Gatha-Ondoku-san  
Closing address-Chairman

### CHRISTIAN

Sunday School 8:30 a.m.  
14 yrs. under mess hall 59  
17 yrs. under mess hall 51  
18 yrs. up Chapel 40  
(Dr. Stuart of Mesa, guest Sunday School teacher.)  
Young Peoples Communion Service  
Chapel 40 9:30 a.m.  
Rev. K. Tajima Chairman  
Dr. S. A. Stuart Sermon  
Adult Service  
Chapel 59 10:30 a.m.  
Rev. H. Izumi Chairman  
Rev. K. Satow Sermon  
Youth Fellowship  
Mess hall 43 8 p.m.  
Mrs. Anne Oishi Chairman  
Get-acquainted meeting  
Japanese Evangelistic Service  
Chapel 59 8 p.m.  
Rev. H. Izumi Sermon

# CANAL CAMP NEWS

## Sawyer Outlines School Plans Before 500 Students

Over 500 high school students held their first assembly at the Christian Church from 9 o'clock Thursday morning. Lafe Nelson, superintendent of schools, was in charge of the meeting and also introduced the faculty members.

W. C. Tom Sawyer, high school principal spoke on the general plan of the school. W. F. Miller, high school vice-principal, stressed briefly on the out-

lines of school activities, such as the student body government and other organization. Monday, October 12, is the date when regular school work begins.

Canal teacher's staff is composed of Claude Tyrrel, Haruo Murakishi, S. Ida Otomo, George Tanigawa, Nettina L. Strobach, Ethel Fleming, Viola Loucks, assistant-Susie Oda, John Carl Brunstein, Albert Vogel, George Domo-to, assistant-Harry Osaki, Mary Hughes, assistant-Grace Nakagawa, John C. Welles, Lillian Bears, Clifford C. Fujimoto, David C. King, assistant-Akira Shimizu, Margaret Ott, Jesse Sedberry and Florence Akiyama.

## Food Output Opens Jobs

Due to the sharp increase in the vegetable output, a packing shed will be constructed in the very immediate future, stated Carl Kawagoe, packing house foreman. At present the products are packed outside by the Farm Management Office now located at 16-9-A. K. Hamada is the Senior Marketing Specialist in charge.

Up to date, the total amount of crop yield is as follows: 403 crates red radish, 64 crates white radish, 275 crates squash including the Italian and summer types.

Jobs will be open for women and girls in the packing shed soon. These vital vegetables are to be shipped to other relocation centers.

## Boys Vie For Flying Honors

Air-minded youths of the Model Aircraft Club will vie for flying honors with motor and rubbered powered miniature craft tomorrow evening commencing at 6.

Site for this initial flying exhibition will be either east or west of block 13, depending upon the unpredictable wind direction at the time.

This exhibition-contest will be in charge of George Ichimoto and Jim Katayama.

**WANTED:** Office Boy for CAS.

There will be a dance tonight in mess hall 16 from 8:30. General admission will be 5¢.

## Grade School Assembly Set

Monday, October 12, at rec. hall 7, the first elementary school assembly will be held under the direction of the 8th grade teachers, K. Hirai, M. M. Straka, E. M. Leggett, and W. Higgins.

Opening with this assembly, classes will run on schedule each succeeding day, from 9 a.m. to 4 p.m.

With approximately 600 elementary pupils attending in addition to 220 nursery and kindergarten children, the staff is working under their main difficulty of lack of furniture. However, it was stated that school spirit is of a high caliber.

## RESIDENTS ASKED TO CLAIM FREIGHT

Canal Camp residents failing to claim household furnishings shipped by freight to Gila are requested to contact Tom Nagamatsu at warehouse 18-1 immediately.

Nagamatsu also requests that to avoid unnecessary delay in future incoming freight or express shipments, colonists include the Casa Grande station on the address, as Rivers is still unfamiliar to many.

## YOUTHS TO MEET

High school students who are interested in joining the Epworth League, Christian Endeavor, or the Young Peoples Forum are requested to meet in 13-7-A at 9 a.m. Sunday. Sam Furuta will be in charge.

## Card of Thanks

We wish to take this opportunity to express our deep appreciation to our many friends for their kindness and sympathy extended to us during our hours of bereavement.

Suyekichi Takeda  
and Family

## WITH THE CHURCHES

### BUDDHISTS

#### Sunday School

Blocks 3, 4, 16, 20, 21,

22 in Buddhist Church

Chairman-John Fujiki

Speaker-Rev. Mr. Tsufura

Blocks 5, 6, 23, 24, 25,

in mess hall 13

Chairman-Shig Horiuchi

Speaker-Rev. Mr. Hata

Notice! Please bring own chairs.

Blocks 7, 8, 9, 10, 26,

27 in rec. hall 9

Chairman-George Okada

Speaker-Rev. Mr. Kimura

Notice! Please bring own chairs.

### CHRISTIANS

#### Sunday School

Rec. hall 24 9 a.m.

Co-chairman-Masako Minami and Amy Uchimoto

Japanese Speaking Service

Rec. hall 7 9 a.m.

Chairman-Reverend O. So

Sermon-Dr. W.C. McKnight

Young Peoples Worship

Rec. hall 7 10 a.m.

Chairman-Frances Onoda

Speaker-Rev. R. Susu-

Mago

Fellowship

Mess hall 13 8 p.m.

Chairman-Marjorie Sanada

Speaker-Mr. J. Landward



# THIRTEEN TEAMS TURN IN ROSTERS

## ATHLETIC UNION, FOOTBALL BOARDS SELECTED

With approximately 35 athletes attending, Teiji Itow, men's athletic director, presided over the third football meeting last night at rec. hall 56.

Thirteen team rosters were turned in at the meeting and therefore two leagues will be formed.

The 13 men limit roster required at least six men be listed and the remainder can be added sometime before the deadline which is set for noon next Saturday.

Although the league's starting date was set for next Monday, Harry Ota,

assistant CAS supervisor, stated that the chief medical officer had advised not to play in the dust as health precaution. However it should be watered and ready in two weeks.

The thirteen teams and their managers are: Aerops, Chubby Sugano; Pa-Chooks, Ben Morishita; Bulldogs, Toru Watanabe; Courier Demons, George Nakamura; 52 Mess, Yoichi Nakase; Green Waves, Chet Oji; Sweetpeas, Tosh Kojima; Leathernecks, Tom Murata; Sidewinders, Tets Shiota; Gila Indians, George Iwao; Zeros, Art Tomita; Thunderbolts, Taro

Kohara; and an unnamed team of Tosh Odano.

A football board was elected to arbitrate over any rule that may be altered or over-ruled.

The board consists of Nakase, Murata, Tomita, Iwao and Watanabe.

A temporary Gila Athletic Union Board was chosen and announced by Harry Ota.

The selected board will consist of Shiz Kurihiro, Murata, George Yegi, Sunao Tsutsumida, Kohara, Frank Saketa, Tomita, Nakase, and Shiota.

### Bulldogs Meet Pasadena Five Tomorrow Night

The L. A. Bulldogs and Pasadena, two top-flight casaba teams from Tulare, will tangle tomorrow at 6:30 p.m. on the rec. area 62 court.

The game will be worth watching as Mayoda and Mikuriya, Tulare all-stars, and Inouye, Itow and Hiroto, all-star second stringers, are listed in the starting lineup and should play a thrilling game.

The starting lineup:

<u>Bulldogs</u>	<u>Pasadena</u>
C. Mayoda	C K. Mikuriya
S. Inouye	F T. Yamanaka
T. Nagayama	F T. Itow
Y. Furukawa	G J. Nakayama
K. Hashimoto	G R. Hiroto

### Mess Softballers Make Debut

With eleven teams entered, the Mess Hall Softball League will make their initial debut Monday at 9 a.m. under the direction of Goro Maeda, CAS athletic director and Kaz Ohara, assistant, at Canal Camp.

The rosters are limited to mess workers only.

### FURNITURES BEING MADE FOR SHOJI CLUB

Rec. hall 72, which will be the location of the Shogi Club, is now having its furnitures made.

As soon as they are finished, the Shogi Club will swing into action.

## News-Courier Sports

### Ochis Meet Scorpions In Crucial Encounter

The scintillating Ochi Brothers and the well touted Scorpions will collide in a showdown battle that will decide the National League softball leadership, tomorrow morning at 8 on diamond 3.

Arizona Giants and the colorful Solons will also slug it out on diamond 6 at the same time.

Gila Cyclones' fate hang upon the crucial engagement with the potent Kingsburg Vikings immediately following the Ochi-Scorpion tussle.

If the Cyclones come through undented, they will land in the championship play-off for the American League pennant.

Monday evening, Ochis and the Spitfires tangle in a replay game.

### CACTUS NINE TACKLE GILA TEAM TONIGHT

In their final National League softball encounter of the current round robin, "sad caso" Cactus Nines will attempt to break into the win column this evening against the Gila Nine.

The unpredictable Spitfires and the Golden Gophers will also take the field this evening in what may turn out to be a closely contested affray.

### BOYS' GRIDIRON CONFAB MONDAY

There will be a managers' football meeting of 16 year old and under teams Monday at 7 p. m. in rec. hall 56.

The main topic for discussion will be the possibilities of a pre-season nine-man grid tournament.

Managers will make team entries for their respective leagues of 14 to 16 year old boys or 13 and under.

Team rosters will be unlimited and it should be brought to the meeting if possible.

### GOH STRATEGISTS TO PLAN TOURNEY

The Goh Club at rec. hall 61 is now having strategists, 150 strong, sharpening their wits daily trying to become impregnable.

In the near future a meeting will be held to discuss a tournament and rank the strategists.

# WEIGHTLIFTERS AWAIT OPENING OF GYMNASIUM

"No gym"----that is the stumbling block of the weightlifters at the present time but as soon as a gym is available, the barbell club will become a popular and active organization such as it was in Tulare.

At present, about 25 boys are taking workouts daily at 47-9-C.

Although there is only one barbell set at the present, two more are expected before the gym opens.

Also expected in the gym are three abdominal boards, three mats and three medicine balls.

The weightlifters will be divided into three groups, working out at different time and competing against each other.

## GILA BABES LEAD SOFTBALL LEAGUE

Leading the Senior Softball circuit undefeated is the glamorous Gila Babes. Still blocking their road to championship are the Turlock Co-eds, with whom they clash this Tuesday and the Canteenettes, which incidentally will be the final game for the Senior Leaguers.

Following closely in the standings is the Kingsburg Starlettes who lost a disheartening 2-1 contest to the Gila Babes.

Standings:	W	L	Pct.
Gila Babes	2	0	1.000
Starlettes	2	1	.666
Canteenettes	1	1	.500
Turlock	1	2	.333
Wampas Babes	1	3	.250

## SPORT FEATURE

### GILA STAR PARADE

YOSHIMI INOUE...Santa Maria...two year first string guard as prepster at Santa Maria...catcher for Central California Junior College League baseball team, the Santa Maria Bulldogs, which won the championship...led the battings for the champs...also caught for Santa Maria Taiyos...All-Star catcher in Tulare softball league.

HARRY OKA...South Pasadena...football and baseball at South Pas...entered Westwood campus in '39...played varsity baseball...slugger...attended California this year.

KEI MIKURIYA...Pasadena...played forward at Pasadena High School and Junior College...attended Cal Poly...J.A.U. all-star...14 to 16 point game average...all-star center in classy Tulare casaba league.

# NEWS-COURIER *Sports*

Oct. 10, 1942

Page 8

## Volleyball Schedule

### BUTTE

Monday:

Jinx vs. Black Sheep  
Tulariettes vs. Turlock  
Hi-Jinx vs. Pasadena

Tuesday:

Teenster vs. Black Sheep  
Jinx vs. French Camp  
Turlock vs. Pepperettes

Wednesday:

Pasadena vs. Alhambra  
Tulariettes vs. B. Sheep  
Teenster vs. Fr. Camp

### CANAL

Monday:

Canal 10's vs. B. Babes  
Canteen vs. Sluggerettes

Tuesday:

Wampas vs. Sangerettes  
V-8's vs. Walnut Grove

## KIRITA CALLS FOR SOFTBALL SIGN-UP

Ruby Kirita, girls' athletic director, is now calling for softball sign-ups of teams.

Softball will start immediately after volleyball and when the first meeting is called, all teams are asked to have their team rosters ready.

Those wishing to sign-up their respective teams can do so at anytime at rec. hall 56.

Equipment such as bats, balls and gloves may be borrowed for practice at rec. hall 56.

# SPORTS SIGHTINGS

S.T.

○ Suppose you had a football team---say, with an average of 170 in the line and a backfield a little less, wanting to play eleven-man football. You get the team all set to play, and then find out that it's taboo because there isn't a team to play against you!

Wouldn't you be disillusioned? Such is the case of Coach Esaki.

○ The roster is studded with prominent football names of high school and junior college teams of recent years.

○ Yonekawa, Murata, Morishita, Miyoshi, "Horse" Inouye, Ota, Wakumoto, Sakanashi, Esaki, Hozaki and the Ishimoto brothers were all high school stars.

○ Among them, Wakumoto and Esaki are proven stars of Jaysee competition. So would triple-threats Yonekawa and Murata and powerhouse lineman Inouye of Santa Maria.

○ There is a nucleus of a potent team and now add Emoto, Y. Inouye, S. Inouye, Mori, and Ichikawa. That'll make quite a team.

○ Yours truly feels that such a team is out of the class of most prep teams and would give Jaysees quite a bad time.

○ It's a pity such a team must disband and let such football talent go to waste.

○ The best they can now do is to cut its roster and play six-man football where much of their great advantages and talent becomes taboo due to the rules of six-man football. 'Tis indeed a pity!

○ Down Canal Camp way, the Icebreaker Softball League has reached its home stretch and looking at it from all angles, it was a grand success.

○ So, hats off to GORO MASUDA, CAS sports leader and his colleagues for the grand achievement. We'll be looking forward to have a few words of advice when we need it.

○ "You can't keep a good man down"---and how true it is in the case of one Mr. Paul Hagiya, sports editor. He has now left the staff the fill the capacity of CAS publicity manager.



# 比羅時報

臨時版 一九四二年  
第二号 十月十日

## 日系市民、噂に迷はず安心せよ!!

### 市民の権利は飽きず擁護せむ

WPA当局態度や、断り明す

日系市民の市民権を剥奪し禁止せしめる法案、並に主退日本人の榮領を規定せしめる法案を採  
用したとおふ噂が流布されておる  
の事であるが、これ等の噂は真  
実ではない。これ等は要分最近上  
院に紹介された。合衆国憲法や、  
修正、議合に二重国籍市民が  
合衆国市民になり得るべしとの條  
件の下に二重国籍問題や、調  
整せしむる機能を許容すべしとの  
法案を提議したものであろう。該  
法案は通過されなかった、偶々上院  
に紹介され、委員会に附託されたの  
である。この種憲法修正案の採決は  
上下両院共各三分二の賛成投票を要  
し、又州議会に於ては四分二の賛成を要  
す。後行はれらるゝものである。未だ議合に立  
退る市民権を剥奪したり、又禁錮せ  
しめたりする執力の送來を採決を行つて  
ゐない。戰時轉住局として米國生れで

ある主退人の市民権を認めると共に、その  
權利を擁護するものである。

(記者註) 該法案はオレゴン選上  
院議員 R. C. ホルマン氏に依り上院に  
紹介されたもので、憲法は修正、二重國  
籍有する米國市民は他國の法律に依  
り該國の市民又は巨たの貢する員ふ  
ものなるに就米國市民権を剥奪すべし  
との、主として日系市民を目的としたもので  
ある。右に對し、議合は今迄な態度を  
示し、あり、目下の処置は化は難題と  
示してゐる。

## 吾等の食卓を飾る

### ツリーレイク配給野示

ツリーレイク同胞の産出した農作物は、  
早くから各地で配送され、それ  
の食卓を賑はせてゐる。當比程にも前便  
の面に亘り合計十四百九十九クレイツに  
多量の配給がある(配給作物内譯文通り)  
レタース 一八八、ナツバ 三五三、  
タイツプ 三〇二、ピーツ 三二六、  
スピンナ 一四一、大根 一三〇、  
アニオン 四〇、ポテト 三〇  
合計一四九〇

◎般の同胞は感謝する武田大佐、まき六四子等  
にて先座と武田大佐は其後快方に向つてゐる。夫  
等共本城を通り、可なり一般の同胞に感戴を蒙る。

## 待望の衣服・靴店

### 愈々十二日より開業

予わて、同店準備中だったオニエラ  
衣服店並に靴店(愈々来る十二日)  
より、オニエラ八号バラツクの新店で開  
業。商店主の富に揃えて一般に兼任す  
る事とされた。尚従来靴賣賣店に在た  
衣服部は、移転に合併移轉、衣服部は戸  
東導氏、靴部は若村フランク氏が各支  
配の任に當つてゐる。

## 輝米青年のオニエラ面合

輝米青年のオニエラ面合は十日夕七時半より、  
六十三師教會堂で開催。会場は向う  
各自の意見を持ち寄り検討する事とし  
てゐる。輝米に限らず一般米會も希望  
してゐる。

## オニエラ大人女子校十二日開校

大人教育部は長リバーン氏の薦めに依り、オ  
ニエラ大人女子校は来る十二日(月)より開校。  
十八歳以上の男女青年に米國を代表する商科、  
劇科、機械科、農科、舞蹈科、應急手  
術、公衆演説、花藝、音楽、格闘技、水  
泳、射撃、ラゲル、社会学、家庭経済、各  
科目に全小數を充てる事となつた。尚オニ  
エラ大人女子校は十日十九日開校予定。

## 火の用心

印字者募集  
印字に経験あり、又希望者、オニエ  
ラ本城責任者まで連絡あり。