

WELCOME TO TOPAZ

GREETINGS

Welcomed by a clap of thunder, a sudden shower, a gorgeous rainbow. Mr. and Mrs. Charles F. Ernst, director of the Central Utah Relocation Project and his administrative staff, 214 eager volunteer workers arrived at Delta, Utah, early Friday morning, September 11. This group was the advance contingent to Topaz, soon to be the fifth largest city of Utah.

Immediately upon arrival placements were made and crews set to work in the hospital, kitchen, employment and transportation corps. Camp Topaz, named after the high mountain west of the project and situated 16 miles west of Delta hummed with activity even before the last volunteer was given his quarters.

The first mess-meeting between the residents and the administrative personnel was held at 7:30 that evening at the community hall with Dr. Carl Hirota presiding.

Rev. Taro Goto, in his invocation dedicated "this center to the glory of almighty God and to the uplifting of His kingdom."

Uniting for the first time under one roof, Christians and Buddhists held the first joint religious service of Topaz Sunday morning.

This Central Utah Relocation Project has been dedicated by the leader of the advance contingent - Rev. Taro Goto - to the Glory of God. In that spirit we welcome every man, woman and child who comes to help us fulfill through Divine Guidance whatever Destiny lies before us.

We are not the first to establish a collective home in this great hospitable State of Utah. We can obtain much encouragement from the success which has been gained in spite of hardships of every description by the early pioneers of this State.

You will find that the various agencies of the United States Government have been mindful both of your material needs and of those opportunities which you desire in the fields of religion, employment, education, health and recreation.

You will be shown every respect as befits the dignity and importance which belongs to every human being. You will in turn be expected to join your best efforts to those of your fellow residents in the common objective of developing our community to the greatest degree possible.

The adjustments will be many and difficult. With God's help and blessing we can have faith and hope for the future.

Charles F. Ernst
Project Director

Topaz is more than just an engineering marvel. It is more than just an isolated settlement for evacuees. It is the sum total of dreams, deep thinking, courage, and faith -- it is a living personality. Topaz is born of the great Mother America.

We are again the pioneers, blazing the road into the wilderness of our social frontiers. Not that we alone march but that we follow the ever guiding pillar of the living wisdom and light -- it is our strength.

When the first contingent arrived here after the long journey from the western shore, we were welcomed personally by Mr. and Mrs. Ernst, the project Director and his wife. We knew then that we were in a big, warm family. Let us do our uttermost in making this Center a bit of His Kingdom on earth.

Rev. Taro Goto

FIRST DAY

TOPAZ OUR CITY

The advance contingent eased into Delta station at 7:40 A. M. after a sleepless night...Married a day before leaving Tanager, Mr. and Mrs. Hiroshi Takayama, nee Toyo May Sasaki, made their first home in Topaz.....Opening at 11:00'clock in the morning, the hospital staff went immediately to work, treated five minor cases.....The kitchen crew served the first meal in Topaz at 1:30 P. M. According to the Gallup Poll, it was a mighty good lunch, and plenty of it....Everyone was housed temporarily by 10:55 A. M.....By the next day nearly every volunteer was assigned work... Baggage was efficiently handled and distributed long before dinner...

WHERE TO GO.

BLOCK MANAGER'S OFFICE... Block 3, Bldg. 7, Apt. A. Rev. Taro Goto is temporarily acting as block manager for the advance contingent. He has generously consented to extend his services to all new residents entering our burgeoning metropolis.

Also in the same room are located the INFORMATION BUREAU, LOST and FOUND, SAFETY COUNCIL and MAIL DISTRIBUTION.

CANTEEN....Block 4, Bldg. 12, Apt. E-F. You may find what you need, be it cigarettes or writing tablets, at the city mart. Conducted on a rebate system, canteen patrons are requested to keep their receipts.

HOSPITAL.....Block four, Laundry dry-room. A few cots are ready for any emergency that might arise as new residents arrive from day to day. Doctors and nurses will be on duty constantly.

Topaz, our new home, situated on a like bottom 4,600 feet above sea level, is surrounded on all four sides by mountains. To the west of us stands beautiful Mt. Topaz, whence the name; to the north and east, Drum Mountains, so-called because at night mysterious drum-like noises emanate from them. Long ranging Mt. Hinckley lies to the south of Camp Topaz. Temperature varies from 20 degrees below zero to 120 degrees. In one day a difference of 50 degrees is not rare.

Topaz will consist of 42 city blocks when completed, 32 blocks being used for living quarters. In an area one mile square will be housed approximately 9,000 residents. This city will be the fifth largest in Utah.

A hospital large enough to handle 100 patients at one time is now being rushed to completion. When finished it will be one of the largest for a city of 10,000.

In the center of the city will be built a civic center consisting of a high school, auditorium, gymnasium, stores and other buildings.

The walls of the apartments are made with sheet-rock and the floors covered with masonite. Though still incomplete, ceilings and inside walls will soon be installed after carpenters arrive from Tanager. Because of this residents are requested to refrain from building shelves and fixtures on the unfinished walls.

Women will be pleased to find that four bathtubs have been provided for their use in each block. Men must be content with showers only. There are individual basins in both wash rooms. Last but not least, flush toilets have been installed.

Approximately 300 to 360 persons will be housed in one block. A block consists of twelve buildings, a dining hall, lavatory and laundry, and a community hall, or recreation hall. There are six rooms to a building arranged in the following manner--A, B, C, D, E, F. A family of two to four will occupy the end rooms, A-F; four to five in C-D; and five to six in B-E.

IRRIGATION

Irrigation water for our farms will come from the Sevier.

THE STAFF

Working furiously day and night, several volunteers offered their full time and energy to publish this the first pre-issue of the city of Topaz. They are: Kim Obata, Fumio Obayashi, Fred Hoshiyama, Tad Hirota, Rev. Goto, Lily Tamaki, and Henri Takahashi.

They were limited to material and time. This issue was mimeographed in Delta.

APPENDECTOMY

Miss Miyo Miura is now convalescing at the Delta hospital after an appendectomy last Sunday afternoon. She will soon be back in Camp Topaz, according to Dr. Ben Kondo, resident physician.

WORDS

You are now in Topaz, Utah. Here we say Dining Hall and not Mess Hall; Safety Council, not Internal Police; Residents, not Evacuees; and last but not least, Mental Climate, not Morale.

☆ ADMINISTRATIVE STAFF ☆
OF
CENTRAL UTAH RELOCATION PROJECT

Director	ERNST, Charles F.
Assistant Director	HUGHES, James F.
Chief, Public Works Division	NOFTZGER, Lee J.
Head, Irrigation and Conservation Section	WATSON, Henry R.
Head, Construction Section	HUTCHINSON, Mulford M.
Chief, Agricultural Division	BELL, Roscoe
Head, Agricultural Production Section	FARRELL, Wm. C.
Chief, Community Services Division	BELL, Lorne W.
Head, Education Section	CARLISLE, Dr. John
Head, Community Welfare Section	LAFABREQUE, George
Chief, Internal Security	FRIDLEY, Ralph B.
Chief, Community Enterprises	HONDRICK, Walter W.
Chief, Project Reports Division	HULL, Irvin
Chief, Fire Protection Division	OWEN, Samuel V.
Chief, Administrative Division	NIESSE, Gilbert L.
Head, Procurement Section	HUNTER, Wm.
Head, Property Control & Warehouse Section	SCOOPMIRE, K. W.
Head, Budget & Finance Section	BURNHAM, Leon
Head, Office Services Section (mails & files)	ALTVATER, Adrian H.
Chief, Employment & Housing Division	CORNWALL, Claude C.
Head, Quarters Section	EATON, Arthur
Head, Placement Section	JENNINGS, James M.
Head, Occupational Coding & Records Section	unnamed
Chief, Transportation & Supply Division	POTTER, Roy
Head, Motor Pool Section	ROGERS, Carl
Head, Mess Management Section	WATSON, Brandon
Chief, Maintenance & Operations Division	BAKER, Paul H.
Head, Garage Section	TAYLOR, Kenley
Head, Bldgs. & Grounds Maintenance & Repair Section	TAYLOR, Lawrence B.
Chief, Medical Officer	RAMSEY, W. S. M.D.

HAND BAGGAGES

All hand baggage placed in the back of the busses may be retrieved outside the medical station after the medical examinations are over, it was announced.

SCHOOL TO OPEN

Elementary and high schools will open on Oct. 19, it was announced recently. Day nurseries will probably begin before the grade schools.

Dr. John P. Carlisle, Ph.D. from University of California, and one of the most outstanding men in Education in Utah, will supervise the schools.

All interested in teaching should report on Oct. 1 when a teachers' training institute will begin. The place will be announced soon.

SCRAP LUMBER

Sufficient scrap lumber has been assured all residents of Camp Topaz. A Committee has been temporarily organized to supervise the distribution of lumber.

A rough estimate of 400,000 board feet of lumber is now available, ever increasing with the days so all residents are requested to refrain from hindering the progress of the carpenters according to the committee in charge of the distribution of scrap lumber.

Latecomers to Camp Topaz may rest assured that they will receive their equal share of scrap lumber when they arrive. Block managers will arrange to get lumber for residents. Since sufficient wood is available, there will be no necessity for hoarding or nocturnal commando raids.

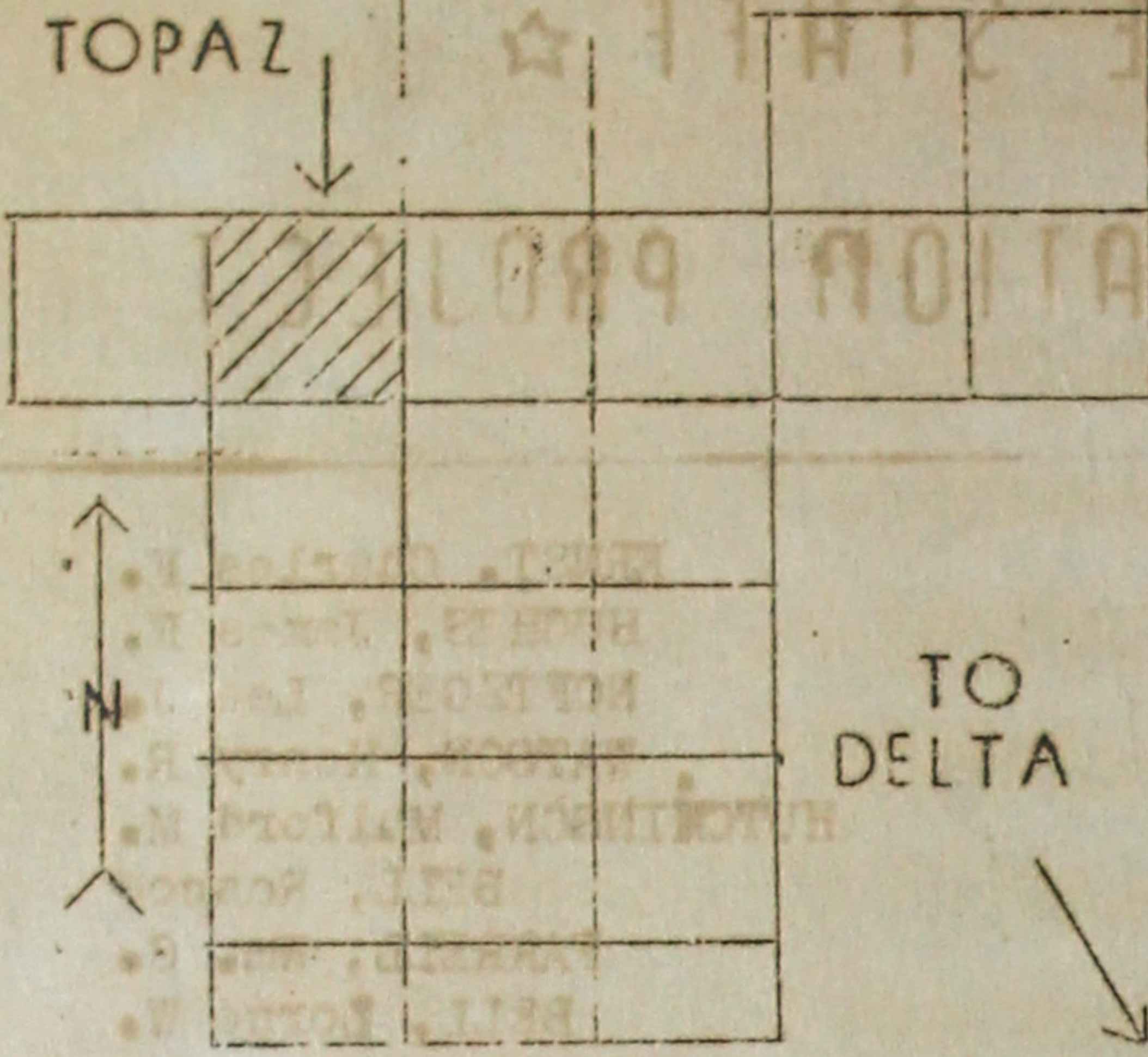
EXTINGUISHERS OUR WATER

Fire extinguishers found in apartments and public buildings are for the use of the residents. Your block fireman will call and give instructions.

The water we are now using comes from a well 996 feet deep. 920 gallons of water per minute flow through a ten inch pipe.



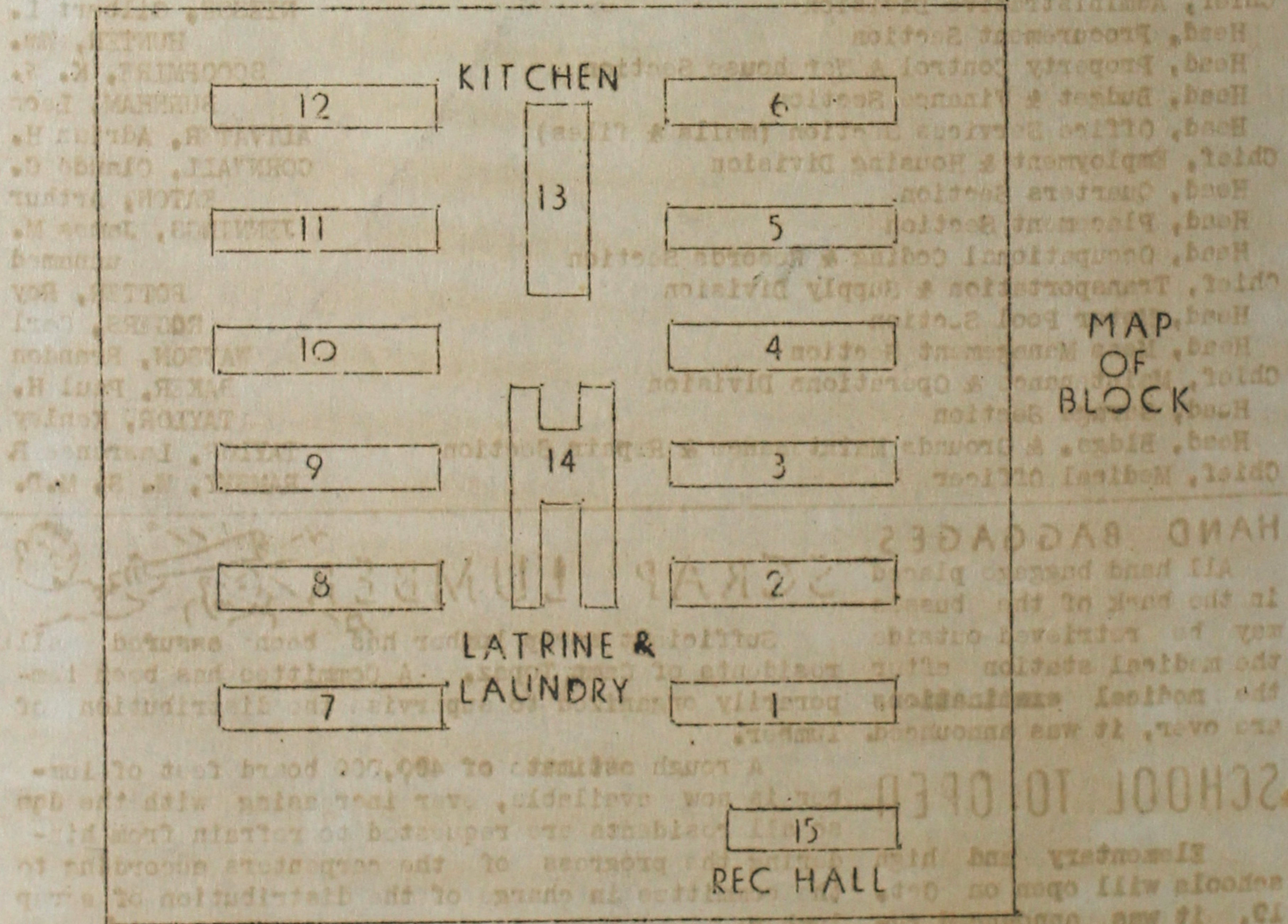
UNSHADED AREA IS THE WORK AREA



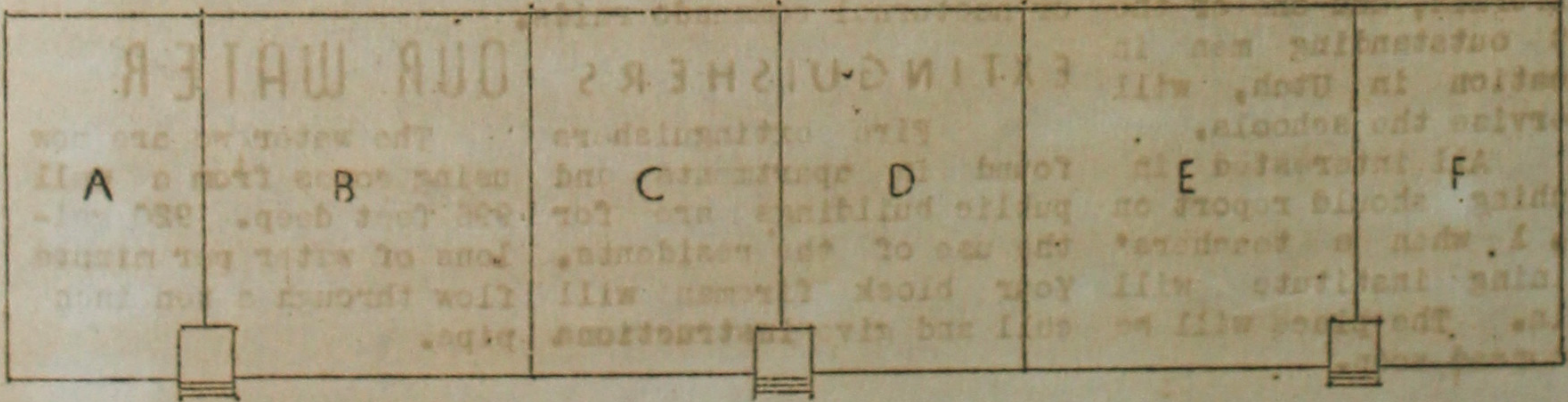
ADMIN. CFF.			HOSPITAL			M.P.
1	2	3	4	5	6	7
8	9	10	11	12	13	14
ELEM SCH.	16	HIGH SCHOOL		19	20	ELEM SCH.
22	23			26	27	28
29	30	31	32	33	34	35
36	37	38	39	40	41	42
RECREATION AREA						

RELOCATION AREA

CITY OF TOPAZ



BUILDING PLAN



FIDO