

# TOPAZ TIMES

S A T U R D A Y

Vol. II No. 66

TOPAZ, UTAH

March 20, 1943

## ASK HELP TO HAUL SAND FOR CHILDREN

Under the sponsorship of the Community Activities section, the children of this City will be assured of adequate and much-needed sand pits to play in. The present plan calls for a sand pit in each block and one in each of the pre-school and elementary school areas.

To gladden the hearts of the children, the CAS appeals to the public to volunteer its services in digging the pits and hauling the sand. Block managers are taking charge of the sign-up and as soon as enough helpers are listed, the block managers will contact the CAS headquarters to make arrangements for trucks to go out 6 miles from here and haul in the sand.

## Marriage Announced

The marriage of Miss Sachiye Takano and Kaoru Sato took place last Sunday at the home of the bride, it was announced.

The newlyweds are now residing at 40-2-C.

### BIRTHS:

NOMURA--To Mrs. Asae Nomura, 22-9-C, March 13, 6:19 AM, a boy.

YUZUKI--To Mrs. Chi-yoko Yuzuki, 28-12-D, March 14, 5:20 AM, a girl.

TAMOTO--To Mrs. Sada-ko Tamoto, 16-6-F, March 14, 5:50 PM, a boy.

SAITO--To Mrs. Setsu Saito, 20-11-A, March 15, 1:45 AM, a boy.

### DEATHS:

SUZUKI--Mrs. Cherry Suzuki, 36-1-A, March 21, 8:05 PM.

KUSHIDA--Shobei Kushi-da, 33-11-E, March 12, 4:05 PM.

HARADA--Mrs. Yen Harada, 5-5-E, March 12, 5:50 PM.

## 2,571 LEAVE CENTERS, 461 FROM TOPAZ

Up to March 6, 2,571 persons had been granted indefinite leave and had left the relocation centers, according to word received by the Topaz Times. Another 2,942 persons have been granted advance clearance and those people are ready to leave the centers as soon as

## TO WORK ON GOLF COURSE

Work on the Topaz golf course is proceeding daily, it was announced by G. Matsuno. Fairways for holes 1 and 9 have been completed and the hole 2 fairway is being constructed at the present time.

This afternoon and Sunday morning, starting at 9 o'clock, in front of hole 1, which faces Block 22, all interested golfers are asked to turn out en masse to hasten the completion of the course. They are requested to wear gloves. Whatever work they do will accrue to their credit toward the membership fee of \$2.50.

Another announcement was made by Kimbo Yoshitomi that he has secured a film, "Keystone of Golf," from Spauldings in Los Angeles and that the picture will be shown sometime next week at a golf rally.

Prospective golfers are asked to sign up as soon as possible at Rec 3 as membership cards are being printed, together with score cards for the 9-hole course.

## CAS RECEIVES \$50 DONATION

The CAS received a donation of \$50 from the Board of Mission and Extension of Methodist Church in New York City, it was learned today.

The contribution, forwarded by Dr. Frank Herron Smith to Rev. Taro Goto here, will be used to purchase recreational equipment.

satisfactory employment arrangements have been completed. Relocation offices in Cleveland, Chicago, Kansas City, Denver and Salt Lake City and local co-operating committees in many different communities are working in behalf of evacuee employment.

With more job opportunities opening up, the leave office in Washington is a busy place. A total of 12,600 applications for indefinite leave had been received up to March 6, exclusive of project registration applications. As a result of the recent registration an additional 5,900 applications had been received in Washington.

For Topaz, there have been 179 group leaves, 51 short term leaves, making a total of 230.

Included in the indefinite leaves are 173 general leaves, 49 leaves for education, and 9 for the armed forces, totaling 231.

The grand total of leaves to date from Topaz is 461.

## MUST REGISTER EVENTS WITH CAS

Hereafter, all social or business events, when held outside private homes, should be registered with the Community Activities section, it was announced today by Project Director Charles F. Ernst.

The regulation has been made primarily to avoid any conflict of dates in the public recreation holding gatherings in rec and dining halls, as well as to insure proper fire and internal security protection.

# TOPAZ TIMES

PUBLISHED AT THE CENTRAL UTAH  
RELOCATION CENTER

Managing Editor-----Taro Katayama  
Editorial Staff----Daniel C. Ota, Iwao  
Kawakami, Harumi Kawahara, Tomoye  
Takahashi, Fumi Nabeta, Eiko Honda,  
Norman Nakashima, Kiyoshi Kimoto  
Japanese Section-----Mas Yano,  
George Kawai  
Art and Technical Staff-Yuri Sugihara,  
art editor; Bennie Nobori, staff  
cartoonist; Fujiye Matsuzaki, Yon  
Nobori, Rose Nakagawa, Mehiko Katsu,  
Mari Ikebuchi  
Circulation----Warren Watanabe, Hideko  
Shinagawa, Jimmy Kikugawa

editorial \_\_\_\_\_

## OUR NEWCOMERS

Last Sunday a group of newcomers--226 in number, to be specific--came here from the Hawaiian Islands.

We--evacuees from California--thought we were practically going into a strange country traveling from a Pacific Coast state to Utah, but our journey was like going from San Francisco to Tanforan compared to the great distances covered by the Hawaiians. For them, this land is an entirely new experience; it cannot help being that when a group of people, who have lived all their lives on islands, are suddenly transported to a continent.

Another big change is the weather. If the cold, wind and dust of Utah was a big surprise to those of us from California, it would perhaps be impossible to describe the effects of Utah climate on the newcomers.

We came as a mass of 8000 people. Many of us had known each other before evacuation and the number of our friends had increased at Tanforan. We are definitely not among strangers at Topaz.

But the Hawaiians must have been wondering about what sort of reception they would receive. It would only be natural if they had misgivings; any of us would have misgivings if we were placed in an utterly different environment.

This is an opportunity for us to show the newcomers that they need have no misgivings. We must welcome them with more than words. Our welcome should show itself in action--that we put them at ease as quickly as possible--that they become a vital part of our city--that they join us in work and recreation. Above all, it is for us who are already here to extend the friendly and helping hand. There are hundreds of ways in which we can be of service and common sense tells us what these ways are.

There is a well-known slogan--"San Francisco Knows How." Let us be able to show at this time that "Topaz also knows how!"

IK

# HISTORY OF UTAH

By W. RICHARD NELSON

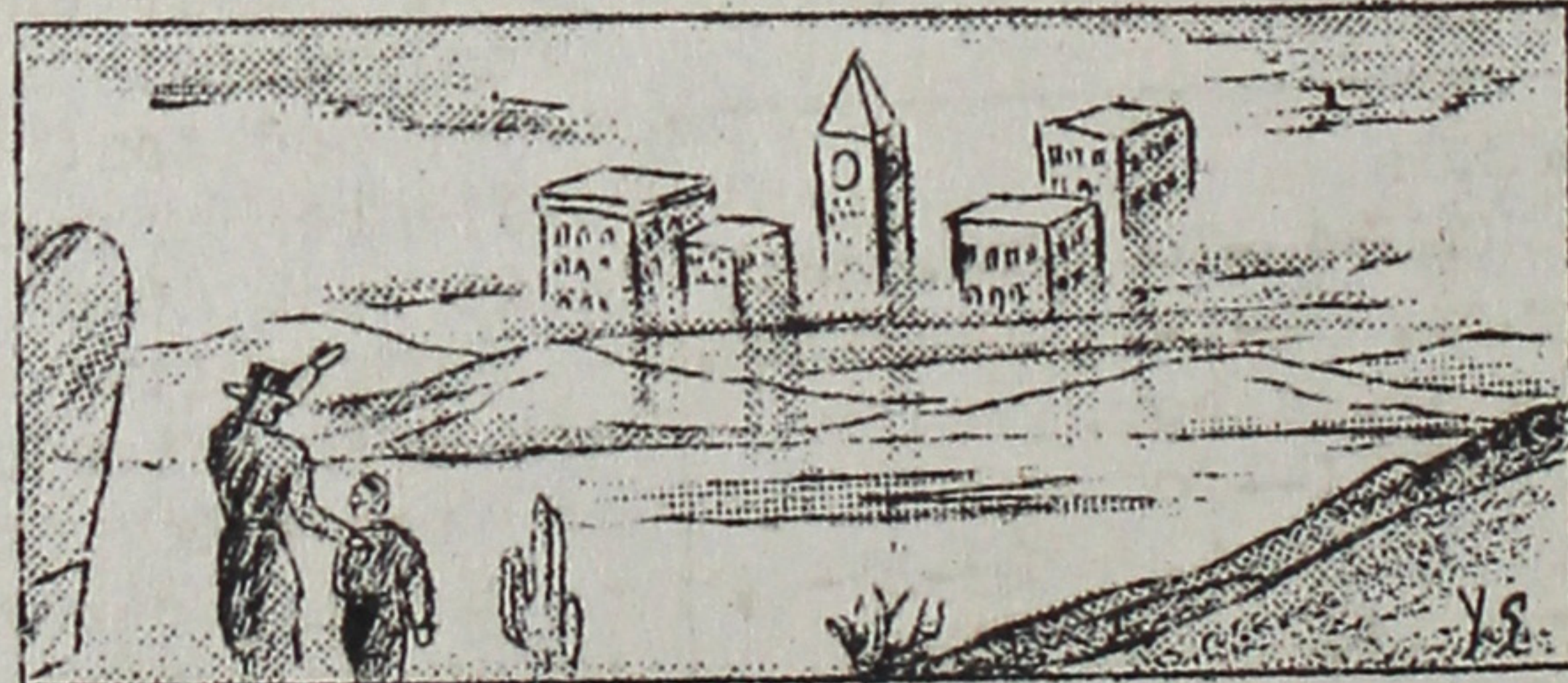
## Part IX--Salt Lake Valley

It was too late in the season when the first companies entered the Salt Lake Valley for seed to be planted with any expectation that it would mature into a crop. Nevertheless, seed was put into the ground after the ground had been overspread with water so that it might be plowed. This had been done by the time President Young entered the valley on the twenty-fourth of July, the advance guard under Orson Pratt and Erastus Snow having come down into it on the twenty-second. Wilford Woodruff also, when he arrived with the president, planted some potato seed before he had eaten anything.

None of the seed planted, however, yielded any full fruit. No one had expected a crop. The seed had been put into the ground more to see what could be done than for any other purpose.

Meantime, the men set to work cutting and trimming logs and setting them up into cabins for use during the coming winter. Other men worked at making sun-dried brick, which were to go into what was intended for more permanent structures.

This being done, President Young, with sixty-nine other men, proceeded on their return trip to the Missouri for the purpose of organizing the others who remained in winter quarters for their trek the following spring. Those in the Great Basin set to work with energy to prepare for the winter which was to come and which they fully expected to be a hard one. They prepared not only for themselves but also for the much larger company that was then already on the way.



When the Latter-day Saints came to the Rocky Mountains to found a commonwealth, they undertook to do so on the basis of the religion of Jesus and of American democracy.

That is because they were both Christians and Americans in the best sense of these words. All but a few of them were born under the American flag, and Americanism was the only form of political government with which they were acquainted. And they had suffered the hardships of two expulsions and of this enforced exodus because they were not willing to surrender their belief in a living God.

Whatever ideals of civilization, therefore, we find in the "Mormon" settlements in the West are traceable, di-

(Continued on Page 3)

## "SUN VALLEY SERENADE" TO BE FEATURED

"Sun Valley Serenade", featuring music by Glenn Miller and his orchestra, and starring Sonja Henie, John Payne and Milton Berle will open its long awaited run on Monday, March 22. Filmed at America's glorious vacationland, it combines skating, skiing, romance, and fun with a dozen musical hits including, "I Know Why," "In The Mood," "Chattanooga Choo Choo," "Sun Valley Jump," and Glenn Miller's theme song, "Moonlight Serenade."

Companion picture for the week is "Abe Lincoln in Illinois," with Raymond Massey in the title role.

"Sun Valley Serenade" will be shown nightly at Rec 32; also on Monday at Dining Hall 22; Tuesday, D.H. 10; Wednesday, D.H. 28; Thursday, D.H. 41; Friday, D.H. 14; and Saturday at D.H. 5.

At Rec 31 every night is "Abe Lincoln in Illinois."

Starting time for all showings are Monday 8:00 PM and Tuesday to Saturday inclusive at 7:45 PM.

There will be a Sat. matinee at Rec 31 and Rec 32 at 2:15 PM.

"To provide residents with more favorable entertainment arrangements, the movie department is extending its services to showings in various dining halls in addition to regular performances at Rec 31 and 32," Paul Sugawara, supervisor of the Co-op service division, said.

Sugawara added, "Future movies in dining halls will depend upon the degree of requests from the residents and availability of locations."

For future arrangements contact Harry Takahashi, manager, motion picture department.

## HISTORY OF UTAH

(Continued from Page 2)  
rectly or indirectly, to the standards set up by the Bible and the Constitution of the United States.

## NEW RULES FOR RETURNING RESIDENTS, VISITORS GIVEN

The following new rules governing returning residents, new evacuees and visitors were announced by the Internal Security division:

If residents are returning on group work leave permits and short term leave permits to re-establish residence in center due to expiration of leave permit, this permit must be surrendered at pass office for cancelation and no charges for meals, etc. shall be made.

If residents are returning on indefinite leave permits to re-establish residence in center, they will be required to file an application for re-instatement with Welfare section (located in Administration building south wing). Permanent residence cannot be obtained unless this application is approved. Meals and lodgings will not be collected for after re-instatement has been approved.

If residents are returning on group work leave permits and short term leave permits for temporary visit, prior to expiration of leave permit, they shall be classified as visitors and shall be required to pay:

25¢ per meal for each scheduled meal served during hours of visit.

25¢ per night for living quarters in barracks expressly furnished for visitors, in accordance with Adm. Instruction 61.

All incoming visitors shall be required to pay the regular charges for meals and housing.

All visiting members of the armed forces shall be required to pay:

20¢ per meal for each scheduled meal served during hours of visit.

20¢ per night for living quarters in barracks expressly furnished for them, in accordance with Adm. Instruction 61.

the courts will be open to the public in the near future. An urgent request was made by Shimura for volunteers to help surface the courts. Those interested may contact him at Rec 3.

### TOPAZ PUBLIC LIBRARY

DONORS: Books and magazines were donated by Mr. S. Kawai, Miss E. Yamamoto, Mr. M. Murata, Mr. R. Mishima, and Mills College.

NEW BOOKS: POINT COUNTER-POINT by Aldous Huxley, HOW THE WAR CAME by Davis and Lindley, QUEEN OF THE FLAT-TOPS by Stanley Johnston, SUEZ TO SINGAPORE by Cecil Brown, HOW JAPAN PLANS TO WIN by Kinoaki Matsuo, PAST IMPERFECT by Ilka Chase, MRS. PARKINGTON by Louis Bromfield, MEMOIRS OF A GUINEA PIG by Howard O'Brien, ACTIONS ON ALL FRONTS by Ralph Ingersoll, MADAME CURIE by Eve Curie, and two juvenile books, PETER CHURCHMOUSE and GABRIEL CHURCHKITTEN by Margot Austin.

JAPANESE SECTION: The staff members wish to thank the residents who so generously donated money and books. The money will be used to secure more books and to buy mending materials.

CONCERT: The Wednesday and Sunday evening record concerts will be discontinued from next week. Instead, programs will be given on Friday evenings from 8:00--9:30, the first of which will be March 26. The program will be a recital by Marian Anderson with the Victor Symphony Orchestra, the selections taken from Handel's "The Messiah" and Mendelssohn's "St. Paul" and "Elijah". The concert will also include Brahms's Symphony No. 3 in F, Opus 90 with Stokowski and the Philadelphia Symphony Orchestra.

## WORK ON FOUR TENNIS COURTS RUSHED

Under the supervision of Nebo Shimura, 4 regulation tennis courts are being rushed to completion. Located adjacent to Rec 3,

## FIVE TEACHERS JOIN HIGH SCHOOL FACULTY

Five new instructors joined the faculty of the Topaz City high school during the month, it was announced by Miss Eleanor Gerard, vice-principal. Three are native Utahns, and the other two come from the state of Texas.

Miss Hannah Larsen of Delta, the wife of the district Farm Security head, teaches 7th grade core. She is an alumna of Brigham Young University.

Also of Delta and a graduate of Brigham Young is E. H. Harris, former principal of the Delta Elementary School for 9 years. Harris, who is in the social sciences department in the senior division, reported that he taught a group of Japanese miners in eastern Utah years ago on American citizenship.

Mrs. Betty W. Deffebach of Texas, who has an M.A. from Rice Institute in Houston, Texas, instructs classes in German and 10th grade core here. She received her degree in modern languages.

Miss Eloise Sundquist of Texas was assigned to the 9th grade core and algebra classes. She is a January '43 graduate of the College of Mines in El Paso, Texas.

David N. Crowton, a native Utahn, is the physical education director replacing Sumner Hale, who left to enter the army. Crowton previously was an assistant supervisor at the Brigham Young University High School.

As of yesterday, there are 62 teachers employed in the high school, 28 appointive and 34 resident, it was pointed out.

### SCHOOLS TO START HEALTH PROGRAM

A health program will be instituted next week for all Topaz school children, with the co-operation of Drs. Donnell Boardman and James Goto of the hospital staff, according to LeGrand Noble, superintendent of education.

A medical room is being prepared at the schools for the physical examinations, it was explained.

### JUNIOR RED CROSS DRIVE NETS \$63.90

Exceeding the original quota determined for a total membership, the recent Junior Red Cross membership drive, sponsored by the Topaz elementary and secondary schools, netted \$63.90, according to Henry Tani, chairman of the project.

Contributing the largest share was the high school with \$37.20. The junior high reported the sum of \$15.

The Mountain View and Desert View elementary schools submitted \$11.70.

### DIXIE J.C. ADDED TO APPROVED LIST

Dixie Junior College at St. George, Utah, has been added to the list of colleges and universities approved by the Army and Navy for American Japanese students, according to a communication received by the Topaz education department from Glen Snow, president of the college.

## know your schools \_\_\_\_\_ SCHOOL-COMMUNITY RELATED

By Drayton B. Nuttall

The schools of Topaz have committed themselves to the hope of becoming community schools. This means that the classroom is extended beyond the 4 walls and its limits set only by the practical limitations of transportation and distance. However, even the boundaries set by this limitation do not correspond with the scope of the school curriculum. This curriculum expands as progress is made through the grades. To the small child his community is his home and immediate neighborhood; to the high school youth his community

## GROUP PROPOSES SERVICE COURSES FOR EMPLOYEES

A definite In-service training program will be established in various departments to present Project employees with an opportunity to receive an extensive study in their respective fields of endeavor, it was determined by the Executive Committee for Vocational training under Dr. Laverne C. Bane, director.

Workers who are interested in participating in this program will be required to keep a job record sheet on which they will record the time they spend on the various sub-activities connected with their work.

### SCHOOL LIBRARY GETS MORE BOOKS

The high school library is well equipped now with the arrival of new books from the WRA offices in Washington to supplement the present stock, according to Miss Lottie Lee Lamb, librarian.

Many of the books in the library were contributed by various institutions in California, and by the communities in the area, it was learned. A few of the books are temporary loans from the Salt Lake City library.

is the world.

Thus it is that the children of the Topaz schools are found going to all parts of their present city, making comparisons with other parts of America and the world. Where personal visits to any place are inexpedient, to read about, to talk about it with someone who has been there, or to write to someone there are satisfactory substitutes. If you must live in a community, whether it be a small village or the world as a whole, that living is made easier by increased understanding of the people and things in that community.

# WOMEN'S MIRROR

by Tomoye Takahashi

4TH WEEK  
OF THE  
BEAUTY  
COURSE



This week we commence to study the art of makeup, for it is next on the list of these qualities men say are outstanding as they approach women on the street. Remember? Posture, stance, dress, features and hair, voice, facial expression, also mannerisms. So, in taking the famed Westmore brothers of Hollywood as our authority, we give you hints on emphasizing your better features, minimizing the poorer. According to these men, there are 7 basic facial types; oval, round, square, etc., each with its own particular charm, if combined with right hair-do.

Discreet rouging and good hair styling with the appropriate neck lines transform the ordinary undistinguished face into a beauty. Cheapening bar-girl type eye emphasis with black goo obviously applied is to be deplored and strongly condemned, for subtlety is feminine, charming and in good taste.

Sun, wind, dust, and dryness we have in Topaz are cruel to the complexion. A protective finish tends to preserve its delicacy and makes an ideal makeup base as well. If it is scaly, try a lubricant at night.

In planning your hairdo, consider your profile, the shape of your head, neckline, and stature, compromising style to becomingness. If your face is full or plump, shun curls, tendrils, and bangs; these are exclusively for the thin. If your face is oval or round, up-do's are just for you. To avoid pre-mature wrinkles and crow's feet around the eyes, remember to wear colored lenses in the glare of the desert sands.

For a makeup guide complete with illustrated material on hairdo, makeup and facial type graph, just ask the Women's Editor of Topaz Times. For sending outside Topaz, please enclose a 1½¢ stamp for every 2 patterns. Limited numbers of earlier issues in this service as well as the popular lapel dog pattern has been reprinted and are now available.

## MAKEUP GUIDE



We had some new arrivals in our 'community' from Hawaii Sunday. Taking thirteen days to cover the distance, ten days in the overcrowded steerage quarters in the hold of a small boat, they

arrived ill, tired, weak, unbathed, and bewildered. "Look at my hands," they said, showing them roughened and peeling," the salt water for washing our faces and brushing our teeth made them this way. It's a relief to be here, but it's freezing cold. I wonder if I can stand it."

Where could they take a bath? Was there any sugar in Topaz coffee? Didn't we blackout before lighting the house at night? Where could they get long underwear and warm clothing? How do you keep warm? Where could they get materials to make shelves and such? These are some of the questions they asked.

They thanked us for the mail order catalogs, clothing, magazines, etc. I hear the FOR group here is calling on them, making friends.

Always,  
-Lami

*Foodies*  
By Evelyn Kimura

Mrs. Lorne Bell of 2-1-D was kind enough to contribute two of her recipes to this column, so we resurrected "Food Fancies" for the occasion. You will be seeing similar resurrections, as the need arises.

How are you faring in these days of no canned foods? Before the edict fell, did you stock up on some of those cans of tomato soup we glimpsed in the past on the shelves of the canteen?

If so, Mrs. Bell offers her recipe for a dish with a lyrical title:

### RUM TUM DITTY

Pour contents of one can of tomato soup into pan. When hot, add one pound of grated cheese. Cook until cheese is melted. Add chile pepper and one beaten egg. Stir well and serve on crackers or toast.

Canned tuna is precious but for the special occasion when it is deemed appropriate to celebrate, there is another recipe offered by Mr. Bell:

### LUNCHEON TUNA (for 8)

- 2 cups cooked celery cut in small pieces
- 2 cups tuna
- 1 pkg. spaghetti
- 2 cups milk
- 2 tbsps. flour
- 2 tbsps. butter
- 3/4 tsp. salt
- 1/2 tsp. paprika
- 1/2 cup buttered crumbs

Make cream sauce of milk, flour, butter, salt, and paprika. Cook spaghetti, add to sauce. Add celery, mix with tuna. Serve with grated cheese and buttered crumbs on top. If possible, bake half hour.

### AFTERTHOUGHT

Our apologies to the young man who tried the recipe for ice cream and who failed to achieve the desired result.

Are you certain you made the necessary distinction between condensed and evaporated milk?

The recipe strictly stipulates that the user must make certain that her (or his) ingredient is the condensed variety.

# YBA SCHEDULE SET

## Bussei Confab Details Given

SATURDAY, Dining Hall 32  
2:00 PM--Registration,  
Chairman; Yasuko Nosaka,  
Virginia Kawakami and To-  
shi Nitta.

3:00 PM--Opening Ser-  
vice and Ceremony. Chair-  
man: Masato Maruyama. Or-  
ganist: Hideko Shinagawa.

4:45 PM--Election of of-  
ficers. Chairman: Masuji  
Fujii.

7:30 PM--Address by  
Lorne Bell. Chairman; Ver-  
non Ichisaka.

7:15 PM--Message by Rev.  
Sanada. Chairman: Jack Ma-  
chida.

8:30 PM--Entertainment.  
Chairman: Frank Matsumoto.  
SUNDAY

9:30 AM--Memorial Ser-  
vice: Buddhist Church.  
Chairman: Masako Matoi.

11:45 AM--Bussei Speak:  
High School Block. Chair-  
man: Katsuji Harano and  
June Nakayama.

2:00 PM--Demonstration:  
Dining Hall 32. Chairman:  
James Yamakoshi. Speaker:  
Prof. Chiura Obata.

3:00 PM--Singfest.  
Chairman: Frank Matsumoto.  
Pianist: Sadie Towata.

3:45 PM--Address by Bi-  
shop A. O. Gardner. Chair-  
man: Katherine Nakaso.

4:45 PM--Installation  
Ceremony and Closing Ser-  
vice. Chairman: Eichi Sato.  
Organist: Hideko Shinagawa.

9:00 PM--Bussei Ball:  
Dining Hall 32. Chairmen:  
Yosh Isono and Sachi Taji-  
ma. Orchestra: Tom Tsuji's.

## TORIUMI ON VISIT TO CITY

The Rev. and Mrs. How-  
ard Toriumi are currently  
in Salt Lake City on a com-  
bined business and belated  
honeymoon excursion. They  
are expected to return on  
the 21st of the month.

Arriving with the first  
volunteer contingent from  
Tanforan, Rev. Toriumi was  
one of the ministers in-  
strumental in laying the  
foundations for the Topaz  
Protestant Church.

Mrs. Toriumi is a tea-  
cher in the Block 41 ele-  
mentary school.

## INVITATION

A special invitation  
is extended to the 226  
new Topaz residents from  
the Hawaiian Islands to  
attend the various Church  
services and activities  
sponsored by the Bud-  
dhist, Catholic, Protes-  
tant and Seventh Day Ad-  
ventist groups, it was  
announced.

## TO DISCUSS PHILOSOPHIES

Four speakers are ex-  
pected to participate in  
the panel discussion on  
philosophies Sunday night  
to terminate the initial  
series of educational pro-  
grams, under the auspices  
of the Young People's Sun-  
day Evening Conference.  
Henry Tani will be the  
chairman of the discussion  
which will be held at 32-  
8-EF from 7:30 PM.

Those who will view in-  
dividual philosophical con-  
ceptions and practices in-  
clude Mary MacMillan, Ha-  
rumi Kawahara, Rev. Howard  
Toriumi and Kimio Obata.

The previous four meet-  
ings included symposiums  
on relocation, post-war

## SCHEDULE FOR THE CHURCHES

### BUDDHIST CHURCH

Sunday: Sunday school  
services from 11 AM at Rec  
8 with Rev. S. Sanada, ser-  
mon, and S. Sugaya, chair-  
man; and at Rec 28 with  
Rev. T. Kashima, sermon  
and K. Harano, chairman;  
YBA memorial service from  
9:30 AM at the Buddhist  
Church with Masako Matoi,  
chairman.

### CATHOLIC CHURCH

Sunday: Morning Mass  
from 8:30 AM at Rec 14  
with Father Stoecke; Sta-  
tion of Cross meeting from  
3 PM at same site.

Wednesday: Rosary pray-  
er meeting from 7:30 PM at  
Rec 14.

### SEVENTH DAY ADVENTIST

Saturday: Sunday School  
meeting at Rec 14 from 9:30  
AM led by Rev. Charles Na-  
gele; Discussion on great  
advent movement from 10:30

### A FITTING PRAYER

By John Benjamin Mages  
March Christian Advocate

O Merciful God of infin-  
ite patience and tender-  
ness, hear thy warring  
children as they pray to  
thee from their torn and  
bleeding world. Thou didst  
give to us a Garden of  
Eden and this is what we  
have made of it. We would  
not wonder if thou didst  
post thy angel with a fla-  
ming sword to eject us. We  
are grateful that thy mer-  
cy is greater than thy  
vengeance.

Show us how, even in  
the midst of war, we may  
redeem our paradise.

May our awakened hearts,  
our hungry spirits, our pu-  
rified souls looking ever  
unto the great crucified  
Redeemer of men, learn how  
to save the world from the  
empire of evil and restore  
the sanctity and peace of  
the garden, which thou did  
make at first.

We passionately cry un-  
to thee for this, Thou Lov-  
er of Mankind. Amen.

plans, lecture on the leg-  
ends of Utah, and a pro-  
gram of classical drama  
and music.

AM at Rec 14 directed by  
Dr. H. H. Hicks; meeting  
from 2 PM with Dr. Hicks.

### PROTESTANT CHURCH

Sunday: Holy communion  
from 9:15 AM at Rec 22  
with Rev. Terasawa; Sunday  
school classes from 10 AM  
at Recs 5, 22, 27 and DH  
32; YP morning worship  
from 11 AM at DH 32 with  
Rev. J. Tsukamoto, speaker  
and Rev. T. Goto, chairman;  
high school fellowship  
from 7:30 PM at 32-12-CD  
with Joe Inatome, chairman;  
YP Sunday evening confer-  
ence from 7:30 PM at 32-8-  
EF with Henry Tani, chair-  
man.

Monday: Standing commit-  
tee meeting from 10 AM at  
Rec 22; YP choir practice  
from 8 PM at Rec 22.

Wednesday: Mid-week  
Bible circle from 7:30 PM  
at 32-12-CD.

# SPORTS PARADE

by Kiyoshi Kimoto

## PREP SCHOOL CAGE CHAMPS MENTIONED

### Coaches Named

By KIYOSHI KIMOTO

Introducing--the new 1943 casaba champions of the junior high and the senior high school leagues!

Senior High "A" winner District 3 with an undefeated record in 8 games--closest competitor, District 4, whose records show their best game with District 3 as a thumping of 13-7 and their worst, a trouncing of 41-20. Outstanding player and the choice of all the opponents for the most valuable player award--Chinky Hidekawa. First string--Eichi Adachi, high scoring guard; Hiro Shimizu, stalwart defensive player; Tom Nitta, fast and deadly offensive star; Toa Momii, clever ball handler; and Chinky Hidekawa, holder of scoring record with 76 points in 7 games. Credit to Yosh Takakuwa for his brilliant rebounding and defensive playing. Coach and best friend of the District 3--Mits Saito.

#### Senior High "B" champs

District 4 for their comeback and winning the championship--three cheers! Close race all the way between District 2 and District 3. Cinching game last Saturday as District 4 walloped District 1, 21-9. Stars for the team--Kiyoshi Kusunoki, voted the most valuable player in the league and an outstanding offensive threat; Junji Doami, first string forward; Kaz Takei, brilliant center; Harry Kitano, fighting guard; Willy Hamada, rebound artist; Tak Kubota, reserve forward, noted for his tricky ball handling; and Skinny Gyotoku. Coach--James Matsumoto.

Junior High Winner District 1A--an easy win-

## JUNIOR AND SENIOR HIGH SCHOOL OPPONENT ALL-STARS SELECTED

### Senior High Class A

<u>First Team</u>			<u>Second Team</u>	
Names	Dist.	Pos.	Names	Dist.
Yosh Fujita	4	F	Tom Tomioka	4
Tom Nitta	3	F	Mas Kawaguchi	4
Hank Hidekawa	3	C	George Hamada	4
Hisashi Watanabe	4	G	Hiro Shimizu	3
Eichi Adachi	3	G	Toa Momii	3

### Senior High Class B

<u>First Team</u>			<u>Second Team</u>	
Names	Dist.	Pos.	Names	Dist.
Kiyoshi Kusunoki	4	F	Nob Kobayashi	3
Ossie Tamaki	3	F	Sus Iwasa	1
Hisanori Sano	2	C	Kaz Takei	4
Harry Kitano	4	G	Willy Hamada	4
Bill Sakai	2	G	Tatsuo Sano	2

### Junior High

<u>First Team</u>			<u>Second Team</u>	
Names	Dist.	Pos.	Names	Dist.
Jiro Nakamura	3A	F	Joe Hayashi	3A
Hid Kashima	1A	F	Tut Hirano	3A
Mo Minemoto	3A	C	Kogi Yamasaki	4
Akira Hirota	1A	G	Jack Tsuboi	3A
Bob Utsumi	1A	G	Junzo Fukami	1B

## CAS AND CO-OP TO TANGLE IN CRUCIAL CLASS AA TILT

Postponed last week because of inclement weather, the last round of the Class AA and Class A industrial leagues will be played this Sunday. The league-leading CAS will try to keep its slate clean by defeating the Co-op five in the feature tilt of the day. The game is scheduled for 2 PM at Court 10.

ner. Classiest team in the league--no opposition. District 3A--their nearest competitor lost 2 games to them. Most valuable player --Hid Kashima for his aggressive performance in the front line. Line-up--Micky Tanaka, sharpshooting forward; H. Yamauchi, steady player; Kaz Yuto, promising forward; Bob Utsumi, sensational guard; and Akira Hirota, up and coming guard.

Nice going champs! Keep up your good work. We like the way you play each game --clean and hard.

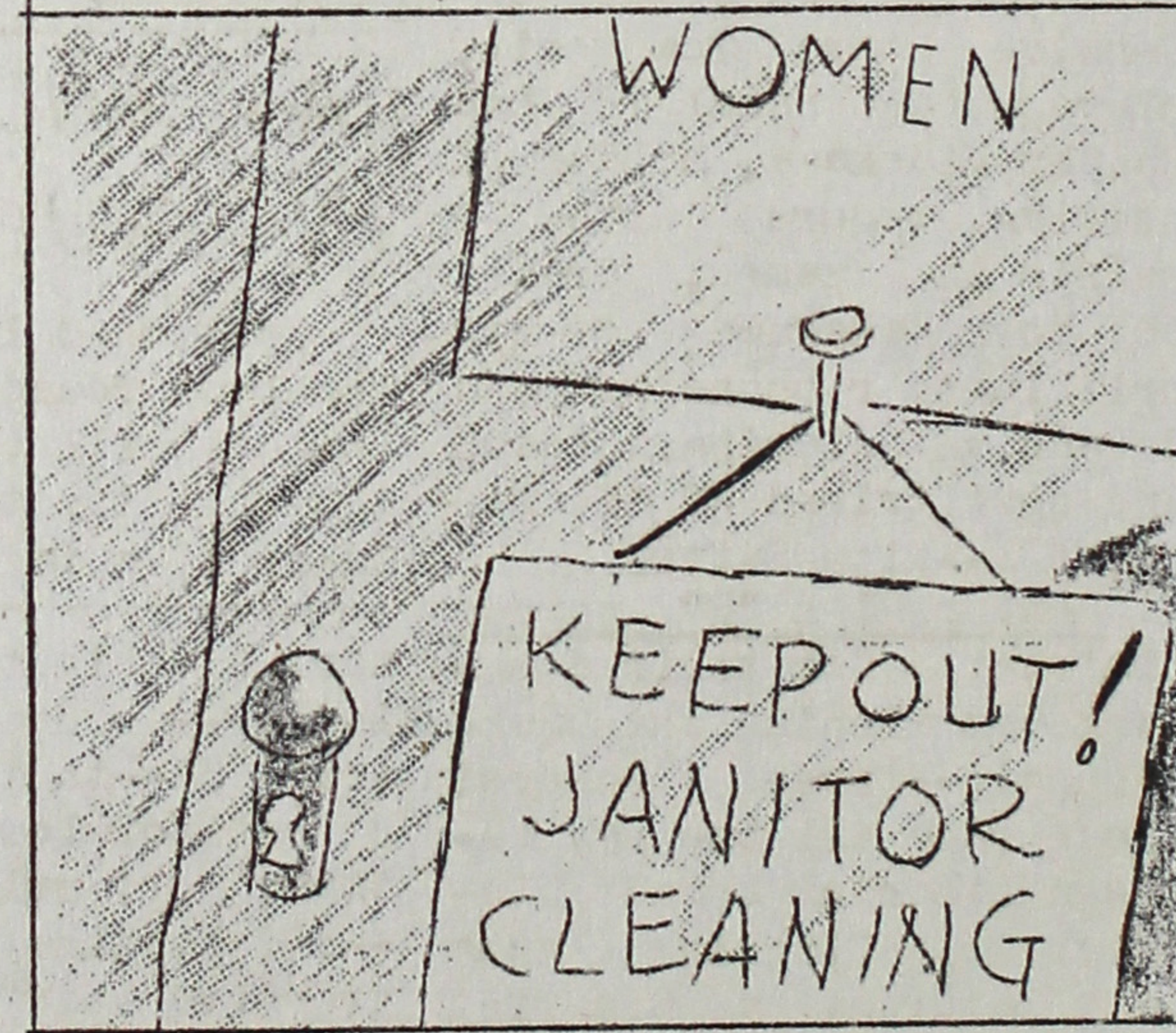
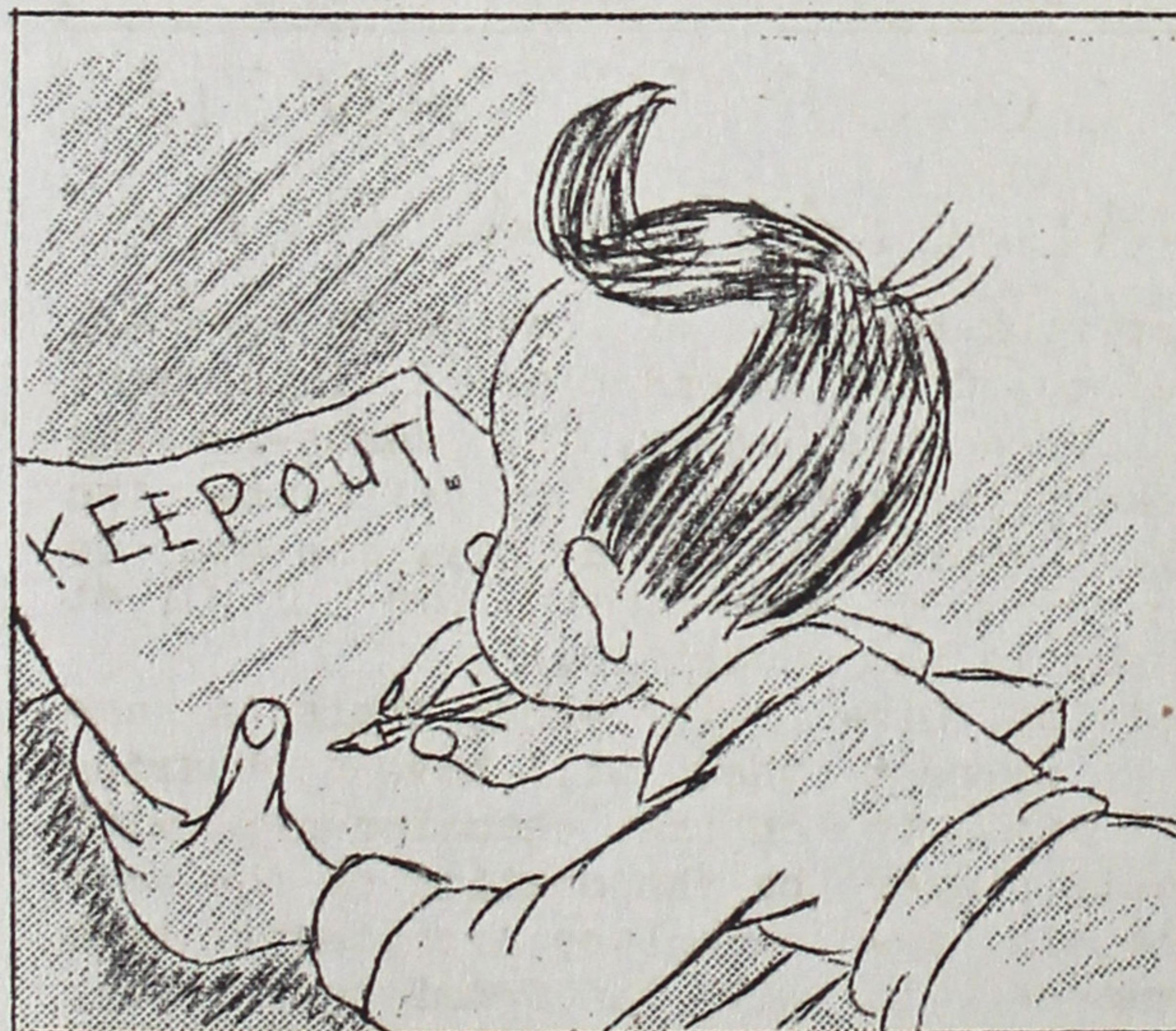
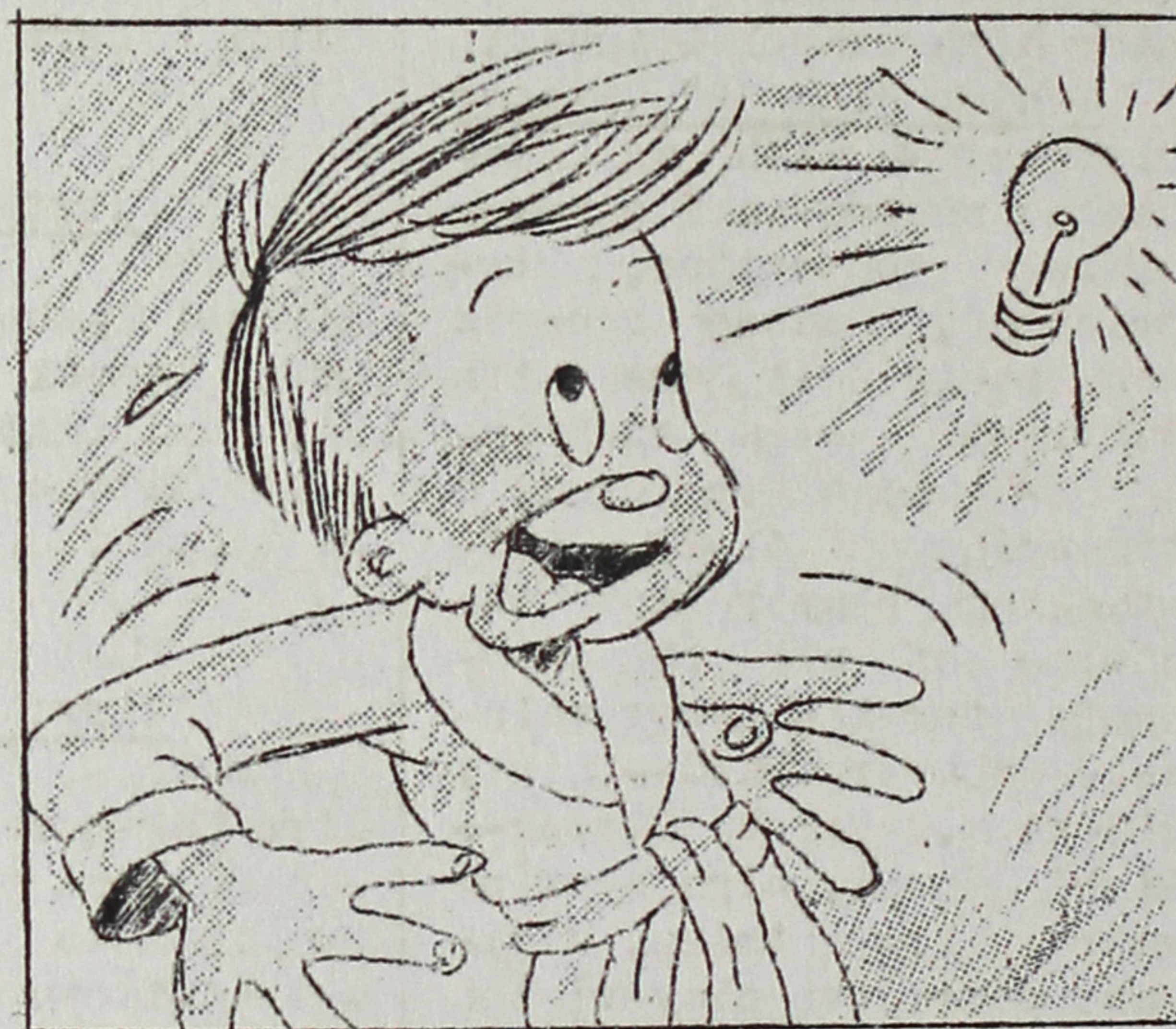
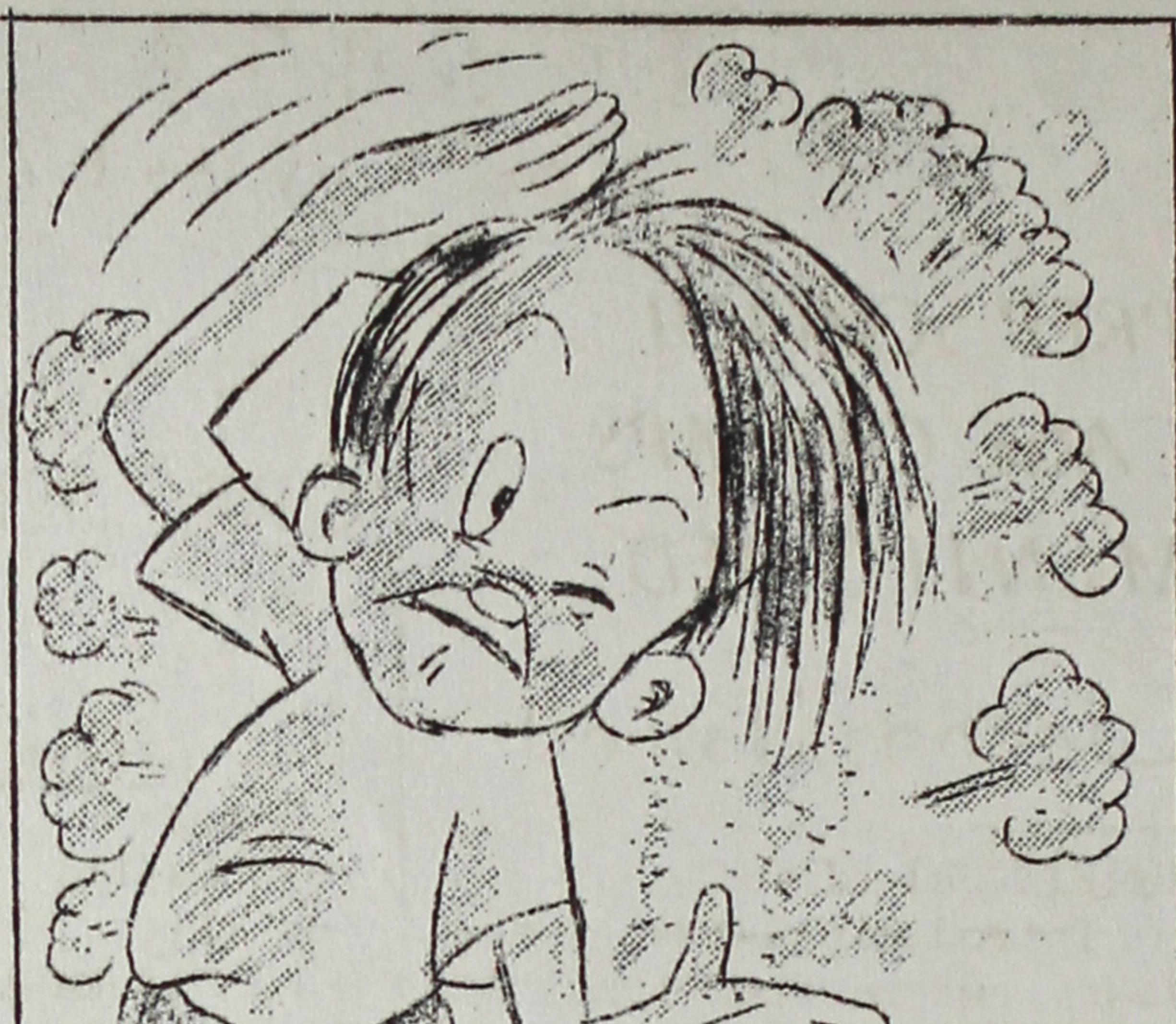
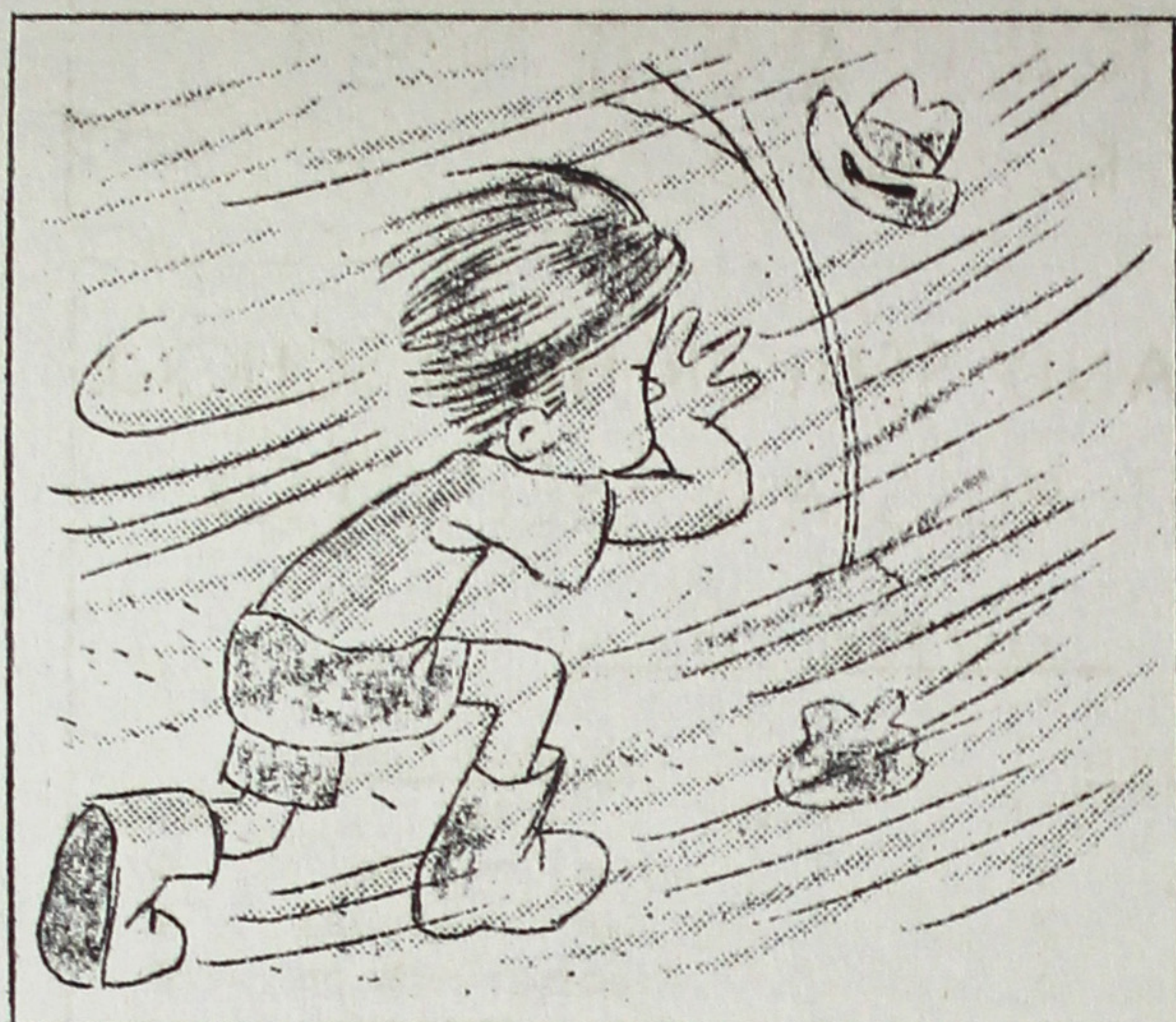
To the runner-ups and all the teams that participated, better luck next time. Your good sportsmanship and friendly attitude are splendid.

The other Class AA game that will have a bearing on the championship will be the meeting of the second-place Architects team with the Commissary five. If the Architects win and the CAS loses, the Class AA league will be thrown into a tie for first place. Starting time for this fray is scheduled for 3 PM at the same court. Firemen will tangle with the Timekeepers 3 PM at Court 30.

In Class A, the Hospital and M & O are tied for first place. This afternoon, the Hospital will collide with the Office five at Court 10 from 3 PM. On Sunday, the M & O will face the Housing team at Court 30 from 2 PM.

"JANKEE TAKES A BATH"

BY BENNIE NOBORI





# 日米交際新聞

## 新入所者を迎へて

(英文欄社説翻譯)

去る日曜日吾等トハズ以前よりの知己或いは市民は二百六十五名より成る布哇よりの立退者を迎へた。途々二十何百海里の海路を経て米本土に立退を余儀なくされた此の新来者の胸中には恐らく丹保蘭在在未知の地エタに送りらるると云ふ報に接して吾等が抱いた焦燥不安とは比較にならぬものがある。

過ぐる日吾等も長き旅程の後砂嵐に思ふや市に來り旅装の儘に寢具袋屋の給與を仰ぐべし砂塵の中を彷徨したとは云へ其処に共に住み働いて來た八千の人は殆んど立退

以前よりの知己或いは丹保蘭入所以來の知人である。今僅かに二百二十六名のこの新来者は常夏の風土に慣れた身を携へて此の烈寒風と砂嵐の中は立ち一面識もなき人々の間に混り再生活しようとして居る。換言すれば新来者は以前と全然異なる環境の下に新生活の第一歩を踏み出してゐるのである。此の時に當り吾等が唯浅薄な歓迎の言葉のみで新来者に対するものは恐らく不必要な心配と奇妙な感情の

叫喚を彼の人々に賣らし、面白からぬ結果を招来するであらう。

操り人形 大好評

先週全曜日午五時市操り人形芝居の一團がデルタ市に出張、北垣信男氏の監督で三回演出し、観客であつた。小学校高年生徒の大喝采を博した。其後人形芝居部は生徒達から再演出を要請の手紙數通送られた由。操り人形はコンミニエアラウキイビレイの主催に依る。

トハズ市に在居者が其眞摯な態度で新来者に應じ、名目だけでなく實質に於て一日も早く、吾等のトハズを新来者も入ルより去り意味のトハズ市ならぬん事を願ふものである。柔港は如何すべきかを知れり」と云ふ標語がある。トハズも亦如何に應待すべきかも知れり」と実証し度いものである。

### 徴兵に関する通告

#### 常に徴兵局との接觸必要

トハズ徴兵局では當 養育者の事情に變動ありたる場合、或は病気の如き、通告を發した。一住所変更の際は直に當市徴兵局に報告する事。三自己の身分又は徴兵の際登録書式に記入せし自己の回答に疑問

取直す。是等は徴兵関係何れに依る未だ未だ然る事ありと認めたる場合は直ちに徴兵局の注意を促す事。

五、所屬の徴兵局と常に接觸を保つ事。當市の徴兵局関係相談役には馬場市役丸山の三氏が答へて居るが、必要に應じて各市民の相談に應ずる。

尚所屬の地方徴兵局とは立退以前に所屬せし地方徴兵局を指すのである。

### 日本語書籍蒐集

#### 協力要望

市ライブラリー内日本語圖書部は開設以來未だ及ぶ歸米二世の心の慰安所として且つ修養研究の一機關として有意義な奉仕をなして、あるが特に

贈申込あり、既に若干続きもつし、近々到着する事になつてゐる。其の數名の人もとも交渉は、あるから數月後、は相當大量の書籍が入所し圖書部が実と相換へて一般貸出に出来るものと見做されてゐる。尚圖書部は現在の書籍不足に對し、これを補ふために所収書籍所有者奉任的書籍提供方を要望してゐる。

因に日本語圖書部では日本語書籍の修繕費及び沿岸より書籍取寄せに要する費用と有志より寄附を仰いだ。市参事員諸氏を始め、各方面より寄金あり、常に感謝してゐる。

市ライブラリー内日本語圖書部は開設以來未だ及ぶ歸米二世の心の慰安所として且つ修養研究の一機關として有意義な奉仕をなして、あるが特に

取直す。是等は徴兵関係何れに依る未だ未だ然る事ありと認めたる場合は直ちに徴兵局の注意を促す事。

### EXPLANATION

- ① Our Newcomers
- ② Selective Service Board Advice's
- ③ Marionette Show
- ④ Library's request for Japanese Books





# 世界市民

## 周譚

廿世紀の暴君は人種的差別特  
 選政治的経済的奴隷制大規模な  
 生活の軍用化残虐な人種的宗教  
 的迫害を以て弱きものを平和を  
 愛するものの抑圧と搾取を信條  
 としてゐる。

私共の彼等と云ふことはこの運落  
 は何か、乃ち人種間の協同政治的  
 自由個人の創造力人種的宗教的  
 實存の国際的互助正義平和  
 として経済的安定と繁栄を以て  
 多うしてゐる。この世界は今ま  
 もよの世界を建設するにあり。

心に偏見を抱いてゐる人々を  
 右に述べたやうな幸一人種間の協  
 同正義平和を以て信じて憎悪  
 とか残忍行為とか云ふものを排  
 するにやむを得ない。勿論かうした理  
 想を人類が胸に抱くやうになつたの  
 はこれははじめからはなしてある。  
 しかし今度と云ふ今度とははなして  
 違つた方法で成功するにやむを得  
 ない。これは方法でこの成立をばら  
 ばらにする。

善良なる世界市民になる事は  
 自国の善良なる国民でなくとも  
 云ふ事はなり。これはちやうど善  
 良なる国民であることと云ふこと、自分  
 の住んでゐる所の善良なる国民で  
 あることと云ふ事が矛盾しないのと同じ  
 道理である。

今日ほとんどの世界各国の人々が一種の  
 変態的國家主義病にとりつかれ  
 おたずは史上未だかつて例がな  
 この國家主義病はひとつの宗教と

何であるか？ 私共が私共の家庭に  
 又私共の住んでゐるところの町村にそ  
 して更に私共の國に對して持つてゐる  
 やうな権利、特權、義務と云ふものは  
 世界全体に對して遂行することに外  
 ならない。かうした諸種の權利や義務を  
 調和させるのが私共と云ふものは、生  
 務であつて、さうしたことは、生  
 活の安定、平和、正義、繁栄が私共  
 一人一人の家庭、町村又は一國家のみ  
 らず、全世界に、全世界の町村に、全  
 庭に、そして又全人類に普及せしめら  
 れるのである。

しかしこれによつて直に各國家が又  
 は各個人が、世界の富を平等に分  
 配出来ることと云ふわけはなかり。各  
 州は紐育州に比べれば、アフリカ  
 州であり、又甲氏の家庭が乙氏の  
 家庭に物持ちがなかり、争ひあり、  
 のと同じ道理である。しかし、世界市  
 民の心を考へ、方から行けば、各州  
 州も紐育州も或いは又甲氏も乙氏  
 氏も、その間に共同の利益、福利と  
 云ふものがあつて、いふ事と理解して  
 お互いに助け合ふ、政府もが繁栄  
 するやうに計るべきである。

### 孟子抄



孟子曰君子所以異於人者以其  
 存心也。君子以仁存心、以禮存心。  
 仁者愛人、有禮者敬人。愛人者人恆  
 愛之、敬人者人恆敬之。有仁於此、其  
 利溥矣。無禮也、則利溥矣。此物此志、  
 不仁也、無禮也。此物此志、宜室宜家。  
 其自反而仁矣、自反而有禮矣。其  
 橫逆由是也。君子自反也、我必  
 不忠、自反而忠矣。其橫逆由是  
 也。君子曰、此亦妄人也已矣。如此  
 則與禽獸無異矣。

何日目の裁判廷で、グロ御  
 大は陪審員査定質問に當り  
 一人に向つて  
 進化論といふ言葉を聞いた  
 ことがあり、聞かされた問をかり  
 と  
 答へた。こゝに、こゝに、こゝに  
 進化論を教へた事は、非常に  
 進歩した事だ、と云ふ風にな  
 御考へて下さい。

法律の  
**猿裁判と双子の結婚**  
 角 傳

金	木	水	火	月	本週の研究講座時間割 最室・於 三二一四E下 (三月廿二日-廿六日)
時事問題解説座談会(場所未定)	日本経済概論 日史概論 池田豊耕	封鎖主義から資本主義へ 沖野五郎	法律講話 西村蘭水史	米國憲法の成立 沖野五郎	八三〇一九三〇 法律講話 西村蘭水史

The Monkey

# TRIAL

By Tsuto Morozumi

After several days of court Mr. Darrow asked, in examining the jury:

"Have you heard the term 'evolution'?"

"Yes, sir, I sure have."

"Then permit me to ask, do you believe that the teaching of evolution is evil?"

"I can't tell you what it is. I can't read."

Thus it was a very easy-going jury. But of course the court scene did not always consist of such non-sensical questions and answers. The defense sharply attacked the weakness of the reasons advanced by the prosecution and asserted that the anti-evolution law was based on the prejudices of legislators who had church connections and that it compelled both public and private institutions of learning to ignore the fundamental principle of the Constitution.

Much confusion resulted from such arguments put forward by the defense. The jury was moved in and out of the court a number of times. It was a highly entertaining comedy. Unfortunately, however, I am not given sufficient space to give details of the trial and must now hurry to the conclusion of this article.

The result of the trial was a hundred dollars fine for Scopes. Reason: He not only taught evolution in a class room but also taught that which was against the teachings of the Bible in violation of the state law.

# A BEACON DOES NOT SHINE ITS OWN BASE

B. T. K.

America refuses to be anything but the first and the best in the world. In time of war--to say nothing of peacetime--America is building up the Greatest War Industry in the World, the Best Air Force in the World, and the Biggest Navy in the World. What follows is a story of one of such World's Firsts.

Fifteen or sixteen years ago when there was a strong movement in Japan to create national parks, a Dr. U., an authority on parks, stopped at Fresno while on an inspection tour of American parks.

During the course of a conversation he asked me if there was a town called

Defendant Scopes appealed the case and argued that there was no disagreement between Christianity and science and that the Bible was not a standard on which to test the validity of science. The appellate court decided in favor of the defense, thus reversing the verdict of the lower court. The higher court, however, did not hold the anti-evolution law unconstitutional.

The Tennessee Monkey Trial thus ended without showing whether or not the law was enforceable. I cannot say whether the trial made a monkey out of the law or the theory of evolution made a monkey out of the trial.

(This section concluded)

Visalia in the vicinity. I answered in the affirmative, thinking that he was about to ask me to take him to a friend or a relative there. But, instead, the doctor asked me if I knew something about the World's Smallest Park, which was there. I knew that the World's Oldest Tree and the World's Biggest Fig-Tree were in the vicinity, but the World's Smallest Park was something new to me. The doctor said that the park was well-known among his colleagues and that it was in the city of Visalia which is situated at the gate of the Sequoia National Park where the famous Sherman Tree stands. An authority in his field, he knew many details of which a native was entirely unaware of.

So instead of arguing about the existence of the Smallest Park in the World a few of us who were there decided to accompany Dr. U. to Visalia to see it for ourselves.

(To be continued)

(The Japanese version of this article will appear next Saturday.)

AMERICANIZATION LECTURES  
32-4-E&F 7:30 PM

Monday, Wednesday: American History and Law (Oki, Morozumi)

Tuesday, Thursday: Foreign Affairs and Utah History - (Ikeda, Nishimura)

Friday: Current Events  
(Location to be announced)

## 訪問 AT THE DOOR

こちらはホワイトさんのお宅ですか

Caller: Is this Mr. White's residence?

これはホワイトさんの家ですか?

訪問者 あるいはこれはホワイトさんの家

Maid: はいさうです。

女中 Yes, it is.

私は佐藤です。ホワイト夫人にお目にかかる約束があります。

Caller: I am Miss Sato. I have an appointment with Mrs. White.

これはホワイト夫人の部屋ですか?

ホワイト夫人は今留守です。お入りお待たせ下さい。すぐ帰ります。

Maid: Mrs. White is out now but please come in and wait.

ホワイト夫人は今外出です。お入りお待たせ下さい。

She will be right back.

彼女はすぐにかへる

彼女がすぐにかへる

Caller: Thank you.



わ 何 し ん  
か が ち な  
ら 何 べ なが  
な た っ た 一  
い か ら ら 度  
に

How about giving the other fellow a chance to talk now and then?

アメリカでこれ文は心得おくべし (其九)