

REPATRIATES LEAVE SUNDAY

With the sailing date of the exchange ship Gripsholm slated for September 1, 63 repatriates from Rohwer and 27 from Jerome will leave McGehee Sunday evening at 9:00 p.m. The train will reach Jersey City on the morning of September 1.

A special agent from the State department will be in charge of the movement. The agent as well as the income tax and the alien property custodian

officials will be in Rohwer a few days in advance, while the Customs officials and Intelligence agents are expected to be in Rohwer on Saturday to begin their inspections.

Before departure, the group will be immunized against cholera, typhoid and small pox. Incomplete immunization of any of the repatriates will be taken care of aboard the exchange vessel.

A Spanish representative

will sail on board the Gripsholm. The ship will carry a large quantity of urgently needed Red Cross supplies and medicines to Americans in the Far East.

The short notice to the repatriates was necessitated by the stipulation of the Japanese government that September 1 be the latest date of sailing. About 325 persons from the 10 relocation centers will be affected by this new exchange.



THE ROHWER Outpost



Vol. III No. 16

Rohwer, Arkansas

August 25, 1943

DEPARTEES:

63 NAMED FOR SS. GRIPSHOLM

Those leaving Sunday will be: Motosaku Inouye, Mrs. Tomoyo and Toshio Moriuchi, Chiyo Abo, Sakao Hayakawa, Hisao Bon, Hanayo, Tatsuno Anthony and Tatsuko Janico Matsuo, Hachiro, Asao, Akira and Isao Matsuura, Blossom Chiyeiko Fujita, Hiroshi and Fusa Fujii, Toshio Omura, Yaeko Tominaga, Sho and Hagiko Yamazaki, Jiro Geo. Tsuda, Yuwa and Takeo Nakano, Fukujiro Sesaki, Tsui Mary, Hisao, Tomiyo, and Kumiko Fujioka, Masato Hideshima, Hitoshi Katayama, Oteru Kayano, Komao Kikuye, Michiko, Junko, Reiko and Masao Kinoshita, Shizue, Toshiyuki and Michiko Kurachi, Sumie Miho, Hikokuma Mine, Mine, Yuriko Gengo, Sachiko and Eizo Miyahara, Shokichi, Kiku

(Continued on page 4)

DETAILS ON BAGGAGE

Custom Inspector To Arrive Soon

Through the final agreement with the Japanese government, a detailed report on baggage information was issued by the Washington, D. C. office. The listed information nullifies all previous conflicting data concerning exchange.

(1) Money. Every adult repatriate is allowed to take \$300 out of the United States. Those under 21 years of age and traveling independently or as the head of the family may also take \$300.

(2) Baggage. Each person will be allowed to take three suitcases of stateroom baggage and 30 cubic feet

RED CROSS LETTERS ARRIVE

Another group of Red Cross messages from the Orient has arrived for residents of the center. The communication arrived through the services of the International Red Cross and are now available at the local chapter desk in building 2.

Names of persons who received messages are listed on page 4.

of hold baggage. These effects must be in trunks, hand luggage or boxes with handles. Crushable containers are not permitted.

Children between the ages of 5 and 10 may take 15 cubic feet of hold baggage with them but those under 5 are limited to 7.2 cubic feet.

(3) In general the Japanese will be allowed to take personal and used household effects which are used in normal life and which the persons who are traveling are permitted to take under the export regulations of the

(Continued on page 4)

RECRUITING TEAM FOR WAC SCHEDULED TO VISIT CENTER

A WAC recruiting team will come to Rohwer on or around September 1 to take applications from Japanese-American women who wish to join the newly created Army Corps.

The recruiting personnel will bring necessary application forms and general descriptive material. Physical standards will be the same as for all other

persons except that the minimum allowable height will be 57 inches and the minimum weight 95 pounds for the nisei women.

Applicants must be proficient in the English language, both written and oral. The accepted women will be for general service and not for a special Japanese-American unit of the WAC.

Attention!

Project attorney Jack Curtis requested today that all evacuees leaving on board the Gripsholm turn in their Alien Certificates of Identification and Alien Registration Receipt cards to his office not later than noon, Friday.

CIO MAGAZINE ADVOCATES HELP TO NISEI MEMBERS

In the CIO War Relief News, a CIO monthly pamphlet, National CIO War Relief director Monroe Sweetland discusses the possibilities of helping the nisei union members.

Stating that there are over 2000 Japanese-Americans members in the relocation centers, he asserts that most of them are loyal and active CIO members who have become well-integrated into the American life. Sweetland further points out these facts:

"Some were union organizers, and many of them walked the picket lines when the going was tough. They refused to scab during lumber, fishing, cannery and longshore strikes--at a time when families were actually hungry and the union treasures were broke."

Working side-by-side with the Finns, Portuguese, Swedes, Negroes and Filipinos as well as the 'old American stock', he says that the nisei have done their part.

The CIO War Relief Committee, together with the government agencies and the CIO committee to Abolish Race Discrimination are now trying to help the Japanese-American CIO members.



Beginning next month, the subscription fee for the following newspapers will be changed to the following rates:

Commercial Appeal, monthly \$1.30, Sundays, 40¢; Arkansas Gazette, monthly \$1, Sundays 40 cents.

Subscriptions should be sent in on or before the 27th of the preceding month. After that day, they will not be accepted.

To correct the misunderstanding of the patrons on the \$.05 charge for cashing checks, the Co-op has released the following information.

To cash checks at the McGee Bank the Co-op must pay \$.04 per check whereas individuals are charged \$.10 fee. Approximately 2,000 checks are cashed monthly, and the commission received by the Co-op totals not more than \$20.

Sometime this week, two barber shops will be inaugurated by the Co-op. The locations will be Blk. 40 laundry room and at 27-1-P.

OUTSIDE EMPLOYMENT

Domestic jobs for couple and single girls are open in Michigan, Ohio and Iowa. Wages range from \$100 to \$150 a month with room and board for couples and \$40 to \$75 a month with room and board for single girls.

Graduate Nurses. \$100-\$115 per month. Rocke Hospital, Sidney, Nebraska.

Farm Work. There are openings for couples and families in Iowa, Minn. and Missouri \$100-\$120 a month with room and board.

Warehouse work. Number of men (18-50) needed laborers, gung leaders, and checkers. Must be able to handle heavy freight. \$75 start. \$.73-.78 an hour after 30 days. \$.75-.83 for gung leaders, \$.85-.90 checkers, \$.90-.95 front dock checkers. Detroit, Mich.

Wool Pressers. \$1 hr., \$1.50 after 40 hrs. week. Detroit, Mich.

Nurse's Aides. Diet kitchen helpers, orderlies, janitors, elevator apt., assistants in store room.

Assistant Technicians. 1 person must be a high school graduate, need no experience, \$122.50 month University of Michigan, Robert G. Greve, Ann Arbor, Michigan.

Linoleum Layer. 1 floor covering man with full qualifications. \$1.50 hr. 1½ after 40 hrs. Must join union monthly dues \$4.50 Initiation fee \$5.00. Hanford Floor Covering Co. Cleveland, Ohio.

Instructor. 1 person to teach Jui-jitsu (take full charge). Will pay according to applicants ability and rating. Bonus will be worked out. 4½ hours day. National Jui-jitsu Institute Ken Wayne, director, Kansas City, Mo.

GUESTS

SERVICEMEN:

Cpl.'s Shimidzu, Chirakawa, Oda, M. Kaminishi, Y. Imoto, Pvt.'s M. Kondo, Nishimura, Takazai, Geo. Nishio, Robert Hayashi, Clarence Nakanishi, Jitsuo Kato, T. Suzuki, M. Takata, S/Sgt.'s Yamabo, Jim Ohini, P. Kawagoye, Y. Hamada, PFC's Tanabe, G. Nishimura, 1st. Sgt. Wm. Sakai, Camp Shelby, Miss.

CIVILIANS:

Barbara Hamabe, Wilmington, Ohio; V.K. Yoshimoto, Chicago, Ill.; James Fujitani, Detroit, Mich.; Atsushi Tokunaga, Ft. Lupton, Colo.; Terushi Maritoku, Lafayette, Colo.; Fred Matsuo, Atlanta, Ga.; Mutsui Morishige, Manzanar, Calif. Kenny Morishige, Manzanar, Calif.; Ted Taruachi, Chicago, Ill.

RELOCATION CALENDAR

Aug. 23: Henry Yamada, Don M. and George M. Tamura, Yutaka Hiranaga, Toshio Iwata, F. Takaeshi Iwamiya, Bob K. Sasaki, Kimpei Toyama, Willie and George Tsusaki, Kenzo Fujii, Chesterfield, Mo.; Wataru Sadaki Ozawa, St. Louis, Mo.; Kosai and Hirokimi Zushima, Chicago, Ill.

Aug. 24: Shizuo R. Yoshikawa, N.Y. City, N.Y.; Jerry Y. Ito, Rockford, Ill.; Teruko Yakushiji, Willoughby, Ohio.

Aug. 25: Alice Kohn, Hiroko Yamada, Ann Arbor, Mich.; Peter Y. Ihara, George J. Kasai, Detroit, Mich.; Amy Ihara, Cincinnati, Ohio; Totsuaki Kojima, Ben Kaneda, Cleveland, Ohio; Fusaye Incuye, Milwaukee, Wis.

Aug. 30: Kinji Hiramoto, New Concord, Ohio; Harry Tsutsumi, Chicago, Ill.; Marlon T. and Pauline S. Nagaishi, St. Louis, Mo.

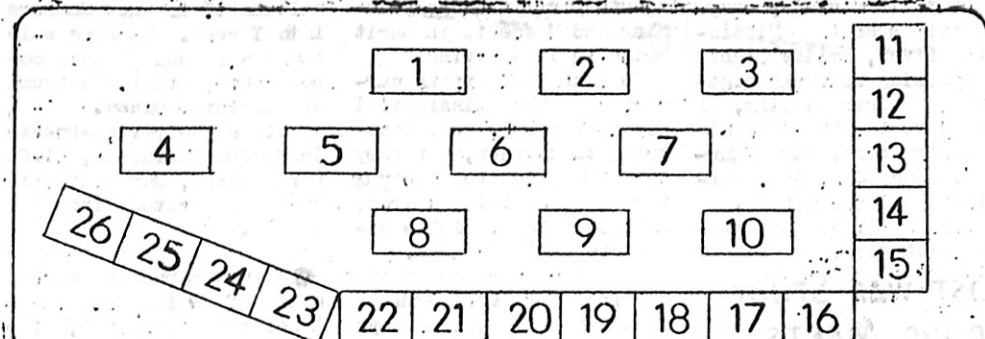
VITAL STATISTICS

BORN: To Mr. and Mrs. Yuki Tadashi 8-4-C a boy on Aug. 20.

BORN: To Mr. and Mrs. Tadasu Fukushima 26-7-E a boy on Aug. 22.

DIED: Saijiro Kunishi, 79 years, 8-1-E on Aug. 22.

CARNIVAL'S BOOTH LAYOUT



1. Shaved Ice
2. Udon and Sushi
3. Ticket Booth
4. Ticket Booth
5. Sandwiches
6. Punch
7. Souvenirs
8. Bingo
9. Punch

10. Bingo
11. Basketball Throw
12. Horse Race
13. Ring 'Em Article
14. Pop Corn
15. Dibs
16. Horse Race
17. Airplane Dart Throw
18. Penny Pitch

19. Balloon Busting
20. Fish 'Em
21. Airplane Dart Throw
22. Milk Bottle
23. Rice Crispies
24. Penny Pitch
25. Peanuts
26. Pull 'Em Strings

COUNTRY FAIR STARTS FRIDAY!

CONCESSIONS TO HAVE FOOD AND GAMES

"Step this way, ladies and....." "Come one, come all! Everybody can win! Here's your....." "Cold drink! Quench your thirst by....."

These and many other familiar chants will echo Friday and Saturday night as the first Center-wide Country Fair makes its debut. The Country Fair will feature a carnival, a talent show, a raffle, an exhibit and a dance to climax the weekend event.

The Country Fair will start Friday evening at 7 p.m. with twenty-six brilliantly decorated booths ready to keep thousands of residents busy. With over thirty clubs participating in the carnival, it is likely to be the biggest event ever to be held in this center.

With the carnival going strong, a talent show will be held on the same grounds at 8 p.m. on Friday.

On Saturday night, the booths will still be open for business and the much awaited drawing of the raffle will be held at 9 p.m. The stubs will be fished out and the winners, if not present, will be notified. Prizes include luggages, robes, electric clock, and other practical merchandises.

In all, there will be a total of twenty prizes.

While all this is going on, a garden exhibit will be held in PS Hall 34. Doors will open at 1:30 p.m. on Friday. The exhibits will be individual entries in vegetable, flower and novelty classes. All exhibits should be brought to PS Hall 34 by 11 p.m. Thursday. It will be tagged by committee members.

Chairman of the different carnival events are as follows: Booths, Kate Nagai; Country Fair exhibits, Henry Sato; Talent Show, Dick Mori.

On Friday night at 8:30 p.m., the latineers will put on a dance at Mess hall 27. The dance will be held on Friday night only.

Among the long list of refreshments that will be sold are shaved ice, udon and sushi, sandwiches, punch, pop corn, rice crispies and peanuts. Games that will command much of the centerites' attention are bingo, basketball throw, horse play, ring 'em article, dibs, airplane dart throw, penny pitch, balloon busting, fish 'em, milk bottle and pull 'em strings. See you' all at the Carnival.

PROGRAM OF EVENTS

Carnival--August 27 and 28, High school ground
Talent show--August 27 only, High school ground, 7:30 p.m.

Raffle Drawing--August 28, High school ground, 9 p.m.

Country Fair exhibits--August 27 and 28, PS H. 34
Dance--August 27 only, Mess hall 27, 8:30 p.m.

Now Showing

Starting today showing through Saturday are the following movies:
PS hall 10--"Highways By Night"
PS hall 15--"Zanzibar"
PS hall 33--"How Green Was My Valley"

LUGGAGE SET IS RAFFLE PRIZE

Raffle prizes will consist of twenty prize including a men's leather "Strut-about" luggage set, a women's overnight luggage set, an electric clock, table lamps, leather bill-folds, robes and other articles.

CAMPING TRIP HIGHLIGHTS INCLUDE BATHING, COOKING

The Rohwer Boy Scouts ended their five-day camping trip near the Mississippi River, Friday night.

Swimming as their highlight of their camping, 41 boys were taught to swim by instructors; John Shimakawa, Henry Oga, Julie Nishimoto and Mas Kitada.

Passing different swimming test were; 33 scouts

in last class swimming; 26 scouts in merit badge swimming and all scouts in merit badge in life saving.

Due to the strong current of the Mississippi River, six boys were dragged by the current, but they were all pulled to safety by the acting life guards; John Shimakawa, Julie Nishimoto and Henry Oga.

The open fire community cooking for the Rohwer scouts for the five days was done by cooks from; Troop 90 Tom Ito, Troop 91, Art Toimoto Troop 92, Keizo Toyofuku, Troop 93, Tak Takada and Jiro Ota.

Camp bugler was Frank Yanagidate of Troop 90.

POST-WAR STUDY GROUP MEETS

The Post-War Study group will meet tonight at the YW Club room, located at Block 41 at 7:00 P.M. The topic to be discussed is "World Government."

EXCHANGE REPATRIATES TO BE LIMITED IN BAGGAGE

(Continued from page 1)
U.S. government. This includes clothing of all types, robes, household linen, silverware, blankets, kitchen utensils, antiques, art objects, collapsible baby carriage and similar articles in normal household use. Excessive quantities of clothing are prohibited, but this restriction should be interpreted liberally since the ship will traverse three climatic zones and be on sea for 90 days.

Following the examination, the customs officers will stamp the date, place of examination and the detention number of the prohibited articles seized.

(4) Japanese repatriates are prohibited from taking the following articles: household furniture, garden tools, electrical ap-

pliances, sewing machines, radios, mechanical equipment, binoculars, firearms and weapons, rationed food stuffs, gold objects except personal jewelry, professional instruments except doctor's instruments usually carried by general practitioners.

Foodstuffs, toilet articles, tobacco products and medicines and drugs may not be included as personal effects except in amounts normally carried by travelers. Photographs, printed matter, sketches except portraits and documents or papers of any kind except Japanese passports are prohibited.

(5) Customs officials will make both baggage and personal or body search and will have full authority to remove prohibited articles, papers and funds.

LO-A CORP WILL HOLD MEETING

On Thursday evening, August 26 at 7:30 p.m., the Lo-a corporation will hold an important meeting to discuss business matters concerning the corporation's property in Lodi.

All stockholders and persons who have goods stored on the property are urged to attend. Other interested Lodi residents may attend the meeting.

MEMORIAL RITES FOR DECEASED

There will be a memorial service held in honor of Mrs. Yoshiko Hayakawa, wife of Rev. Sakae Hayakawa, and for the mother of Mr. K. Kunimori, both of these people passed away in Japan sometime back and word was just received. The services will be held at the church tonight, Wednesday, Rev. J. K. Fukushima will bring the message and Rev. S. K. Hata will be the chairman.

CLUB NOTES

Instead of a bunk party, the Luauas held a party to welcome their new members in the Y room. Members welcomed were Ann Tsuji, Sonoko Sato, Ethel Tsutsumi and Christie Ozawa.

Since their vice-president, Bonnie Masuda, left for Chicago, Margaret Kikuchi was voted into her office.

With a capacity crowd, half of which were the Appointed Personnel, the 38 Toppers put over a gala "Personnel Hop" in Mess 31 on Aug. 20. The evening's program included games, talent show, refreshments, movies and dancing.

Making their debut before 200 guests, the Lucky Strikers held their first social last Saturday in Mess 23. On the guest list were Kwee Loge, Pacerettes, Racers, Manhattaners, Teonsters, Blk. 8 club and Blk. 12 club. With Kiyoto Ohata as advisor and Mr. and Mrs. Norman Funamura and Mr. and Mrs. Ed. Fukuda as patron and patronesses, the evening's affair was emceed by Gary Shiota.

BUDDHIST MEETING

There will be a meeting of the Buddhist Church Sewa Kei Ka tonight at FS hall 23 at 7:00 P.M.

RED CROSS LETTERS

S. Yamamoto, Stockton, H. Yokoi, Stockton, K. Funamura, Acampo, Y. Iida, Lodi, S. Yamamoto, Stockton, G. Abawa, Los Angeles, K. Akashi, Stockton, K. Honda, Stockton, B. Ibaraki, Stockton, S. Hikiida, Los Angeles, M. Yoshijima, Norwalk, N. Matsumoto, Acampo, R. Yoshida, Gardena, M. and S. Yasuda, Stockton, S. Hori, Lodi, M. Kawaguchi, Stockton, S. Ito, Gardena, R. Horibe, Stockton, J. Yasuda, Los Angeles, F. Watanabe, Stockton, T. Yamada, Los Angeles, N. Matsubara, Los Angeles, K. Kobayashi, Montebello, H. Yoshioka, Lodi, H. Yamasaki, Stockton.

FOUND

FOUND: An Elgin pocket watch of gold case was found between Block 32 and 23. Owner may claim it at the IS dept.

REBELS TRIP ROYAL DUKES, 6-4



August 25, 1943 Page 5

ERRATIC LOS ANGELES NINE ERRORS WAY TO DEFEAT

Playing heads up ball and making use of every break offered to them, the powerful Stockton Rebels avenged a previous defeat by downing an erratic Royal Duke nine, 6-4, and in doing so, put them in a position to cop the center "A" softball title.

Before a turnout of over 2000 spectators the Royal

Dukes started out like champions scoring three runs in the first inning. George Iseri walked and Hiro Kaya-suga followed with a hit, both advancing on a wild pitch. Ken Hirata skied out to centerfield and Iseri tallied after the catch. After walking George Miyake, Frank Kamibayashi let go a wild heavy over first base on Sam Iida's roller. Kaya-suga and Miyake denting the platter on the error.

The fighting Rebels scored their initial marker in their half of the first when a wild throw let in Mike Takeuchi from third.

With the score 3-1, the Los Angeles nine widened their lead in the second frame when Kichiro Kazahaya reached first on an error, stole second and third and scored standing up on a fielder's choice.

Behind three runs and seemingly playing a hopeless tilt, the Rebels came to life in the second stanza when four runs came rushing in. With the bases loaded, Sam Ichiba sent a lazy fly which fell for a hit, scoring Akira Kume and Mike Takeuchi. Sat Oune came through with a hit through the infield to drive in Kaz Hiromoto and Ichiba with what proved to be the winning run. They tallied another marker in the fourth on an error for good measure.

Young Akira Kume gave up only three hits and received brilliant support from his infield and outfield, the infield rattling off a doubleplay in the fourth inning to snuff out a potential rally.

Though Sam Iida hurled courageously, his support fell apart, committing six costly errors.

Score by innings: R H E
R. DUKES...310 000 0-4 3 6
REBELS...140 100 x-6 9 2
Batt.: Iida and Kazahaya,
Koono; Kume and Matsueda.

Peter Shimada Pitches, Bats Block 6 To Victory

The biggest upset of the current summer hardball league occurred Monday night when Block 6 upset the favorite Lodi Wanjies, 3-2, in an abbreviated 5 inning game.

REBELS MEET MUTINEERS TONIGHT

With the center softball championship staring right in their face, the powerful Rebels will clash with a fighting Mutineer nine Wednesday evening at 6:00 o'clock.

Shiro Mizufuka is slated to carry the pitcher's burden for the Mutineers with young Akira Kume, who silenced the powerful Royal Duke batting attack, hurling for the pennant-conscious Rebels.

If the Rebels cop this tilt they will be crowned champions, but if the Mutineers emerge victorious, a second three-way playoff will have to be run off.

The game was a pitchers duel between two 16-year-old chuckers, Peter Shimada of Block 6 and Wanjie's new rookie find, Junji Sasaki. Shimada held the usual hard hitting Lodi nine to two measly hits, while Sasaki gave up only five.

The winners scored their victory in the last of the fifth when Kiyo Sanuki doubled to drive in Sam Yama-shita, who had singled, with the tying run and Peter Shimada won his own ball game by hitting a single to score Sanuki with the game-winning run. —Harry Oshima
Score by innings: R H E
Lodi Babes....001 01-2 2 4
Block 6.....010 02-3 5 2
Batt.: Sasaki and Tanimoto; Shimada and Iriye.



The class "B" hardball league makes its debut in this column with Peter Shimada, Block 6 ace right-hander, as the hero. 16 year-old Peter, who hails from Terminal Island, pitched and won his own ball game against the colorful Lodi Wanjies Monday night.

As dusk crept over the field with the score tied at 2-all two away and the winning run on third, Peter looked at two balls go by, stepped out of the batters box and discarded his cap. On the next pitch, he hit a high bounding single over second to knock in the tie-breaking run and the ball game.

Shimada also held down the hitherto undefeated Lodi nine to two scattered hits and was supreme in the pinches.

Who's Playing

"A" SOFTBALL LEAGUE
Rebels vs Mutineers, Wed.
(Play-off game.)

THURSDAY

Jr. Reds vs Trojans
Blue Jackets vs Bombers
SanShi Jrs. vs 33 Babes

FRIDAY

Jr. Reds vs Ramblers
Musketeers vs Trojans
Midgats vs SanShi Jrs.

SATURDAY

Jr. Reds vs Bombers
Musketeers vs 33 Babes
Ramblers vs Trojans

DOUBLE CC LEAGUE

Blk. 26 vs Hiyanizi, Enite
Blk. 26 vs San Shi, Thurs.
Blk. 26 vs Lookouts, Fri.
"B" SUMMER BASEBALL LEAGUE
B-19 vs Royal 9, Tonite
Lodi Babes vs Sakuras, Fri.

EDITORIALS FOR STUDENT AID

The biggest disappointment in the Center has been the undeniable fact that the emphasis of the youths has been primarily concerned with the recreational side of life. During the past ten months, we have found that the direction of youth development has progressed in the pursuit of relaxation. Such channels of activities have added to the athletic and social qualities of the nisei, but sadly, it has not been accompanied with equal maturation in educational and cultural thoughts.

Certainly, we have seen the growing efficiency of our public schools but these organized classes have touched only a set portion of the nisei, leaving the further education of those out of high school to the facilities of the night school.

A new center organization known as the Student Aid committee has been created in the past two weeks by interested individuals and organizations. The group will accumulate funds from which needy students will be aided in the matter of transportation and miscellaneous expenses when they relocate to outside schools. The committee recognizes that educational training of our youth on the outside would reap the nisei greater benefits by giving those with intelligence an opportunity to better themselves.

A NEW RULING

An Associated Press release, dated August 20 and issued from Philadelphia, gave an account of a new Federal court ruling on the legality of the right of military authorities to exclude anyone from defense areas on the ground that they might be potentially dangerous to national defense.

Stating that the United States was not in immediate danger of attack or invasion by its enemies, Federal Judge J. Cullen Ganoy overruled the exclusion order issued by Lt. Gen. Hugh A. Drum, head of the Eastern Defense Command, excluding Mrs. Olga Schueller, a 53-year-old naturalized citizen of German birth from the Third Corps area. This is believed to be the first Federal court ruling of its kind.

Judge Ganoy in a fourteen-page decision said: "While I am not unmindful that the issuance of the proclamation by the commander of the area is some evidence of the finding of the necessity for his assuming control of the functions of civil government, yet where there is direct interference as here with one's liberty and property, conduct normally beyond the scope of governmental power, such action could only be justified, a constitutional guarantee of freedom can only be abridged, when the danger to the government is real, impending and imminent.

"Suffice it to say that the factual bases do not obtain here which would warrant the abridgment of petitioner's constitutional rights."

Judge Ganoy's ruling sets a precedent for future Federal court decisions on similar cases of exclusion. It may affect the future cases dealing with the Western Defense Command's exclusion orders, since the present situation shows that West coast is not in immediate danger of attack or invasion by its enemies though at the time of the evacuation, the danger may have been impending.

Another question that may be affected would be if the military authorities have the right to exclude persons from areas on the ground that they might potentially be dangerous to national defense when danger is imminent, would the authorities also have the legal right to exclude those persons of proven loyalty (WRA clearances) from defense areas when danger to the government is not now imminent (Pacific coast).



Friday and Saturday will be Country Fair days for the center and the two-day carnival should prove very profitable in both enjoyment and pleasure.

Manzanar's Carnival, held in July, netted the various clubs a total of about \$1407. The Nolleans netted a prodigious sum of \$301.87 of which it kept 203.25. Only four of the twenty-odd clubs made less than \$15 in net profit. The CA netted \$470 by receiving one-third of the net profit from each organization. No raffle was held there.

The Jerome carnival was just as successful. It was reported that our twin center netted a sum well over a thousand dollars in its venture. The clubs there were guaranteed a minimum of three dollars for participating.

Rohwer's two-day affair should be just as successful financially with its multi-prized raffle and twenty or more concessions. REMARKING FINANCES.

The Student Aid Committee, recently organized by various individuals and organizations, is in dire need of funds and soon will launch a campaign to raise funds to aid and thereby encourage any deserving high school graduate to become trained and educated in any field in which he or she may be interested.

Similar committees in Tule Lake and Topaz have recently started their drives for financial aid. Tule Lake has set \$2000 as its goal while Topaz has already exceeded their \$2500 quota. The method of building up the fund has not yet been decided as yet.

Perhaps a sizable portion of the carnival profits would give the committees a good start.

P.S. Any resemblance between Lil Dan'l and Lil Kango is purely in the matter of their size.

朗和時報

第二交換船愈々出帆

当所帰國者は日曜出帆

荷物其他に因する規定発表

交換船「リ」がスホルム
号出帆も九月一日に確
定した朗和から五十五
名、佐藤から廿七名の帰
國者は日曜午後九時之
ツギに去つて、横し
、就國に向ふ九月一日に
汽車はリヤージ市に
着く。
國務省の特別役人が之
の監督にあたり収入税
官及外人税務官が出帆
数日前当所へ出張の外
税關吏と情報官が土曜
に来朗し調査を行ふ。
出帆前に一行にコレラ
菌、チフス及天然痘予防
注射を行ふ。若し間に合
はぬ場合は船中にて之を付

スベイツ政府代表も同
船する又赤十字から東
洋に居る米人への供給
品及藥品等を多量に搬
ぶ。日本政府との協約依
つて九月一日が出帆日
に定められた為、帰國者
に短時日の通告しか出
来なかつた。十軒住所か
ら約三百二十五名帰國
する。
現金と荷物
日本政府との最後の交
渉の結果荷物に關する
規定が幕府から発表さ
れた。
現金——大人各三百
市を携帶出来る。但

し廿一才以下で、家長
又は一人で帰國の場合
同額を携帶出来る。
(二)荷物——客室へ持ち
込み得るスーツケース
三個其他の荷物は三十
立升を限る。
靴はトランクや荷物又
はハンドルの付いた箱
に入る。破れ易い物品
は許可されぬ。
五才より十才迄の子供
の荷物は十五立方呎、
五才以下は七立方呎
である。
(三)持參出来る物品——
普通生活に使用される
衆國輸出法で許可され
た自己用品、使用され
た家庭用品を携參出来
る。即ち各種着衣、被服、履具
、リネン、食器、アラシケ
ット、調理用品、美術品、私
母草、通常生活で使用
された類似品等である
衣服を余り多量携參す
る事は禁ぜられてゐる

が船が二つの気候の異
つた地方を通り九十日
の航海をする為に細當
のものは許される筈で
ある。
機内後視鏡、鏡は使用
場所のスクリーンを押
し、禁止品は押収する。
(四)持參禁制品——家具
庭園道具、電気器具、救急
ミシ、ラヂオ、機械類、双
眼鏡、火器、武器並に統制
食料品、△客自製身用、以
外の金製品、△匠師携帶
用以外の匠師機械、△食
物化粧品、煙草、毒物は普
通旅行者携帶数量外は
個人用品に含まれぬ。
△官印印刷物、類似以外
のスケッチ、△日本のパ
スポート以外の書類は
禁ぜらる。
(五)税關——はバック
ル及び身体搜索も行ひ、禁
止品、書類及過多金額も
嚴重に罰せらる。
朗和からの

歸國者氏名

△井上元作 △森内トミ
△トシオ △阿部千代 △
早川宗 △松尾久雄 △十
ヨクツ子 △連馬 △松浦八
郎 △ヤサオ △明イ △八 △藤
田千エ子 △藤井ヒロシ
△フサ △大村トシオ △常
水 △エ子 △山崎ヨウ
ハダ子 △津田次郎 △中
野ユリカ △カオ △江崎楊
次郎 △藤田ツイ △サダ
トミヨクミ子 △秀島マ
サト △片山ヒトシ △茅
野才助 △木下駒雄 △江
ミチ子 △順子 △禮子 △サ
△倉留静枝 △利行 △千子
△三保澄江 △峰岸照 △
宮原ミチ子 △金子源吾 △
千子 △宗藏 △森野庄吉 △
クネ子 △奥子 △ヨウ子 △
下子 △サ子 △山谷初枝 △
一 △以上五十五名

は所内警察署へ出頭受
取るべし。
○理髮店閉業
組合では所内便利の地
域に三四ヶ所理髮店を
開く筈であるが今週中
に先づ二ヶ所閉業する
一は第四十五区浅瀬宮地
は廿七区一の戸、軒金は
五分大人廿五仙、小廿仙
○新聞料変更——九月か
らコンパシヤル、アツビ
ール一ヶ月一三〇。か
ツト一帯、日曜紙、函紙、英
回〇仙と変更、申込、締切
は前月廿七日限
紙面の都合で営業報告
其他次号に譲る。
軍川牧師送別会 朗
和基督教會牧師、中川宗
氏、交換船の途に就く
に付き送別會を兼ね、在
郷の友人、最送、葬式の由
に付、其の送別會を廿五
日夜八時、20区同教會に
於て、催す由、會員諸氏の
出席を希望す。

急に転住所を閉鎖することなし

所民の外部転住は希望するを
決して之を強制的にせず

鶴羽への隔離と各セン
ノ一民移住に伴ひ転住
所の或るものが近く因
鎖されるも噂が起り人
心動揺しつゝあるは既
報の通りであるがWR
AのDSマイヤー局長
からは左の如く電報を
以て直ちに肉親の計画
なき事を表明した
転住所の或るもの又は
は全部が閉鎖する、
と云ふ噂を信じてゐ
る者があつた様である
が其の心配はない。
WR Aは將來出賃得
る文多数の人々を出
所せしめる方針では
あるが之は除々に行
はるゝものである。従
つて各々が転住所の
一つで止むに閉鎖す

るが如き計画は立て
ない。出所者が
増へ所民が減少した
場合肉親する様にな
るだらうが之は近い
將來ではない。
所民が外部に自治の
道を求める事は奨励
する所だ決して強制
的に出所させる事は
しない。
テイロントマイヤー

農園方面頗る好調

お豆腐用大豆の

収獲と準備が整つた
殆んど有んだ胡瓜スク
ワシスイスチャ、オク
ラ西瓜、ピー及ラディシ
は大量に生産された。マ
ナリーの完成せる現

清武青年の奇禍
山田重四郎三十九才
は去日夕時同区メ
スに於て清武信天君口
才同区五才口輪の未
備より突然クレバー
を以て切付け頭部にて
針の重傷を負つた。被
害者は早速入院手当を
爲し加害者は警察署出
張拘引後ジエールに送
られた。近く裁判ある筈

充鷹奇談

在の仕事はトメトスト
リングビーノズ及び
ツを鐘鈴にして冬期に
備へる事である。秋作は
ボテトスイスチャで
灌漑システムが出来上
つた。致好い収獲がある
との思はれる。
長崎方面は順調に進み
現在三百五十頭の豚が
居り住民の食前に供せ
らるゝ。近い大豆収獲
も殆んど準備が出来た。
大分分は豆備製造に使
用される。養蚕は十二
月の臨終期に達し、
最近農園の馬具の鎖等
盗む者あり之を当局に
報告するは日本人の恥
であるからせし出来
す責任者は大困りであ
る。と云ふ太田氏の語を
持ち汚ない事はせぬ様
お互注意肝要である。

結 指

四五尺に及ぶ双翼を
振つて黒い鳥が当所内
の空を悠々と飛び廻
つて居るのを見れば、
は要々見る。あれは異
色に住む青年此日君兄
弟が卵の時から不眠
の縁因がありその嬌つ
た雛鳥を入手に育てあ
げた。当所唯一のフサ
ト兎鳥である。斯の工
ソートは次の様な姿に
面白く侍と情愛に富ん
だものである。
故田兄弟が今年の陽春
四月当所から一哩許り
の樹林の中で偶と一ケ
の大きな卵を発見した
が珍らしい卵なので其
が珍らしい卵なので其
温にして置いた。のであ
つた其後三日に行つ
て見たら其の卵が孵つ
て珍妙な雛鳥が居た。

て之を持ち帰つて最初
は出やんやコンフレ
ミルアを一日に三
回与へて育てあげた
には必しも其を更へて
生肉や煮卵の實験を一
日二回宛やつて漸く今
日迄に育てあつた。六
下旬頃になると彼は飛
ぶ事を覚え初め、昨夕
は毎日八行とせでセン
ター中をひひ廻り日没
頃になると遙に家庭か
近しくなる。この見え
るに帰つて故田兄弟
所に親を見せる。故田
兄弟は「たい」と呼んで
可愛がつて撫でし。後
亦主人に抱き馴れ親
でゐるさまは傍で見
るに羨ましい。別に他人
に害をしない。かつた
りした鳥であるから何
うか石を投げたり奇
たりしない。可愛がつ
てやつて下さい。と故
田兄弟は笑つて居る

て之を持ち帰つて最初
は出やんやコンフレ
ミルアを一日に三
回与へて育てあげた
には必しも其を更へて
生肉や煮卵の實験を一
日二回宛やつて漸く今
日迄に育てあつた。六
下旬頃になると彼は飛
ぶ事を覚え初め、昨夕
は毎日八行とせでセン
ター中をひひ廻り日没
頃になると遙に家庭か
近しくなる。この見え
るに帰つて故田兄弟
所に親を見せる。故田
兄弟は「たい」と呼んで
可愛がつて撫でし。後
亦主人に抱き馴れ親
でゐるさまは傍で見
るに羨ましい。別に他人
に害をしない。かつた
りした鳥であるから何
うか石を投げたり奇
たりしない。可愛がつ
てやつて下さい。と故
田兄弟は笑つて居る

町長会議

報告及決定事項

○二日の町長会議は、報告及決定事項の要領を、左の如し。

○町長の住宅整理に關し、主佐バンドーグ、磯部、島々、米口、六日各、各ユニットの住宅現狀調査を爲す可く、トラ、イ、主佐の下に、三、名の役員が、挙げられ、之を援助す可く、各正に於て、準仕的に二名以上の委員を、挙げ、之に當らしむる事に決した。が、其前日、口五日、午、石、磯部、各、全部の組合を、併し調査に關する、當局の説明を聞き、打合せを爲す。苦、○失はれたる、電氣、フ、ン、運送を、悲愴に、關し、電、寮、長、フ、レ、ト、ン、氏、は、其一部に、就ては、在所が、判つてゐる、て、直接、手、を下す事は、望ま、し、から、ず、

町事会及び町長会にて、可然取扱ふ事を希望する。この事で、あらたに、内、山、長、報、告、に、就ては、町長会は、可及、的方法を、盡して、尙、予、期、の結果を、得、ざる、際、は、其、筋、に、於て、適、宜、の方、法、を、講、じて、更、ふ、より、外、付、し、と、な、ふ、の、であつた。

町内で個人の營業不許可違反のない様に注意

W R A 行政規則第六條に依る、と、私設企業、が、消費物品、又は、サービス、を、セン、ター、住、民、に、小、賣、する、事は、禁、せ、ら、れ、て、る、る、之、は、小、販、の、人、が、他、の、人、々、に、配、當、を、与、へ、ず、し、て、自、分、の、賣、上、の、利、益、を、貪、る、事、を、禁、ず、る、爲、に、作、られた、じ、の、である、此、の、規則は、共同組合に、W R A、で、保、持、せ、ら、る、セン、ター、民、の、必要、品、及、サービス、を、せ、し、む、る、事、になつて、

冬期暖爐用の薪の準備を、今より努力して、昨年の如き不安、困、患、を、避、け、た、し、と、安、達、氏、提、言、石、に、就ては、町事会に、燃料、部、門、が、あつて、努、力、中、な、れ、ば、之、を、協、力、し、て、適、當、なる、處、置、を、執、る、可、く、委員、として、堀、本、藤、造、富、山、の、三、氏、を、挙、ぐ、

町内、で、個人、の、營業、不、許可、違反、の、ない、様、に、と、注意、する、

當、セン、ター、内、で、私、設、ビ、ズ、ネ、ス、が、不、正、の、利、を、得、て、行、は、れ、て、る、る、の、報、告、が、町、務、所、へ、前、断、なく、來、て、る、る、町、事、会、と、町、長、会、組合、重、複、に、此、の、同、類、に、就て、所、當、局、から、特、別、手、段、を、と、る、必要、の、ない、様、に、協、力、さ、れ、ん、事、を、要、望、する、

万、一、當、局、で、扱、ひ、事、にな、る、と、所、有、物、及、道具、は、取、上、げ、て、倉、庫、に、保、管、する、

町長

岩瀬氏指導の町長部では、来る二十七日から三日間、四十四日、P S、に、於て、作品、展、覽、会、を、催、す、午、前、十、時、より、午、后、九、時、迄、毎、日、開、館、一、般、客、会、を、歡迎、し、て、る、る、

尚、ほ、生、徒、連、の、出、品、は、開、会、前、日、ま、で、に、届、け、る、様、に、と、

花提供

町内庭園部には、今、沢、山、の、草、花、が、咲、き、は、こ、つ、て、る、る、。結、婚、式、葬、儀、其、他、花、の、入、用、な、方、は、遠、慮、なく、申、込、み、下、さ、い、と、言、ん、で、無、料、で、提、供、致、し、ま、す、と、町、井、主、任、は、云、つ、て、る、る、

故園からの音信

其、後、更、に、亦、十、字、社、を、通、じ、て、左、記、の、人、々、へ、故、園、音、信、が、届、いた、

山本晴郎 横井星雄
赤田健太郎 幸田幸一
赤田万里 安田幸一
同、ニ、デ、ミ 河、口、政、市
堀部良一 渡、辺、エ、フ
堀、清、作 山、崎、カ、ル
(以上、元、衆、市)
船、井、兼、一 飯、田、フ、イ
松、本、昇 吉、岡、弘、一
以上、元、種、台、地、方、

樟葉コープ重要会議

樟葉コープレーションは、重要なる協賛に關し、重要なる協賛あり、来る廿六日午後七時半より、大口三三、協賛会内に於て、相談会を催す。この、株、主、及、び、関係者、又、荷、物、を、預、け、て、る、人、其、他、同、地、方、の、人、々、

は、是非、參、集、あり、た、し、と、

立つ鳥

後を濁さず

町長部、出、立、に、近、づ、き、ボ、チ、く、荷、物、の、整理、に、着、手、し、て、る、る、向、こ、ある、が、之、等、の、人、々、の、立、つ、た、後、には、又、人、が、は、い、つ、て、住、ま、な、け、れ、ば、な、ら、ぬ、は、何、人、と、知、つ、て、る、る、所、だ、

種、々、の、設備、を、取、外、す、所、後、は、ドン、ケ、マ、式、に、就、し、て、行、か、ぬ、様、に、と、町、事、会、隔、鄰、部、會、員、堀、本、四、郎、氏、は、要、望、し、て、る、る、

概

○テ、ル、ク、吟、社、土、屋、の、例、会、は、都、合、で、休、会、

大々的に催される

共進会とカニバル

ターレントショーと福引抽籤

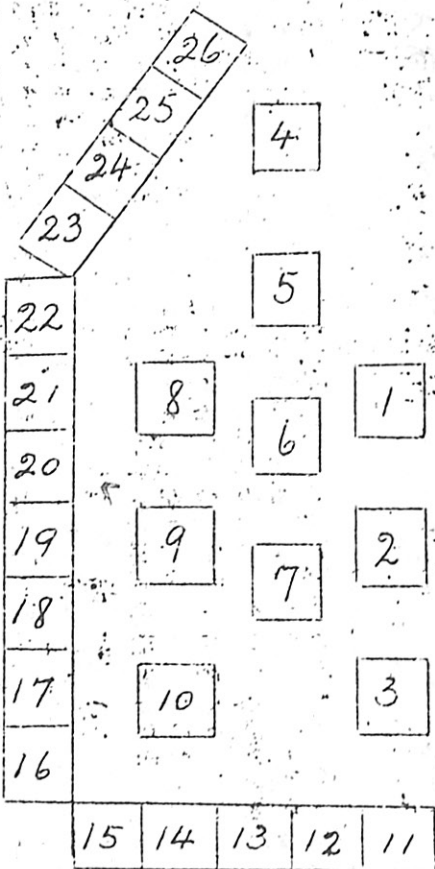
朗和センター待望の共進会出品館三十四区
進会井にカニバルは予
て本紙上既に発表せる
如く愈々来る廿七日
八日両日大々的に開催
する事になった。初日
廿七日には余興として
ターレントショーも在
り二日目は特に福引
券の抽籤があるもので更
に人気を呼んでゐる。

福引券テケツ販賣は来
る廿六日亦曜日を以て
又初日、終日、テケツの賣切
れぬ内に買求められた
しと福引券テケツは
各団体井に演藝部員に
依つて發賣中なり因に
下に会場の詳細面を
示して各位一般の便に
備ふ。

個人出品は

前掲の特等券の事

カニバル設計面



- 1-水店
- 2-水店
- 3-水店
- 4-水店
- 5-水店
- 6-水店
- 7-水店
- 8-水店
- 9-水店
- 10-水店
- 11-水店
- 12-水店
- 13-水店
- 14-水店
- 15-水店
- 16-水店
- 17-水店
- 18-水店
- 19-水店
- 20-水店
- 21-水店
- 22-水店
- 23-水店
- 24-水店
- 25-水店
- 26-水店

後一時半より開場の考
であるが野菜花其他の
出品者は其の出品を前
日廿六日午後十一時迄
に会場へ持参するやう
に委員に依り適宜に

送別團若大会

朗和團若俱樂部の總当
親は去日曜日を以て終
了の諸氏入賞

一筆矢野憲二等佐野
以下左の如し、山吉田
河村西木谷津田松永
徳永尚ほ引続き鶴湖
行きの梅本海野島田河
村及安藤諸氏を爲めに
送別團若大会を

留別大演藝会大成功

朗和男女青年會主催

朗和男女青年會
主催の聯合留別
大演藝会は去廿
六日、両夜に於て
東の広場に於て
催された。好天候
と大人数とは両
夜共に数千人の觀
衆を呼び文字通
り立錫の余地な
き盛況を呈した。
プロケラムは手
軽よく進行特に
朗和演藝部の特別
一、演最後は民族
祭展、万々三唱は
多大の感激を觀
衆に与へた。

来る廿八日(五)より月曜
までの三日間開催七回
封切戦を行ふ筈なれば
その行を仕んがらしむ
る意味に於ても多数の
好者の参加を望む中、