

Army Work Rulings Modified

War Department restrictions on employment of American citizens of Japanese descent at Army posts and establishments have been modified, William O. Melton, assistant Project director, revealed.

In a recent official letter from the War Department to commanders throughout the country, procedures were established for employing American citizens of Japanese ancestry in civilian jobs at any Army project except in restricted areas of the West Coast.

WRA relocation officers will work with various posts and establishments to develop employment opportunities for evacuees now in relocation centers, it was said.

"The principal effect of this latest War Department action," Melton explained, "will be to widen employment opportunities for evacuees. Large numbers of Civil Service civilian workers are now employed by the Army, especially in service and clerical jobs. In addition, this step is also significant from a public relations angle."

Conditions under which War Department employment is permitted are American citizenship, eligibility for employment under ordinary Civil Service regulations, permission of the commanding officer of the establishment seeking to employ the evacuees, and clearance of the applicant by the Provost Marshall General.

Persons of Japanese ancestry currently employed at Army posts and establishments in specialized services will not be required to obtain special clearance.

DENSON TRIBUNE

Vol. I, No. 26

Denson, Arkansas

May 28, 1943

KIKU NAKAMICHI CROWNED QUEEN

STORES WILL CLOSE TUESDAY

All Center stores and the Co-op warehouse will be closed Tuesday for monthly inventory.

Mail Shoe Applications

Hereafter, all shoe rationing applications will be handled by mail, announced A.G. Thompson superintendent of education.

Applicants are to secure applications from their block managers and fill them out in duplicate accurately and completely to avoid delay.

The applications should be mailed to the Education section, Administration Building 2.

USO MEETING SCHEDULED FOR MONDAY

Girls 18 years old and over interested in USO work are asked to attend a meeting at 7:30 p.m. Monday in the YW Hospitality house in Block 20, said Mrs. Al Tsukamoto, girls' club supervisor.

Mary Nakahara will be in charge of the meeting.

CARNIVAL PROGRAM LISTED TODAY

- 2 p.m.--Concession opening, Block 22.
- 2 p.m.--Denson vs. Rohwer men's and women's all-star basketball games, Court 33
- 6:15 p.m.--Hawaii B vs. Madera baseball game, Block 21.
- 8 p.m.--Talent show. Queen Kiku will be introduced to the general public, Block 22.

TOMORROW

- 2 p.m.--Long Beach Ayes vs. Hanford Ayes baseball game, Block 21.
- 3 p.m.--Concession opening, Block 22.
- 6:15 p.m.--Fowler vs. Hanford Bees baseball game, Block 21.
- 8 p.m.--Weight lifting exhibition, presentation of basketball awards, Block 22
- 9 p.m.--Raffle with Queen Kiku and attendants drawing numbers, Block 22.

MORE THAN 500 BALL PATRONS WITNESS SIMPLE CORONATION

The incessant question "Which one is it?" was answered last night before more than 500 sweltering Coronation Ball patrons when Kiku Nakamichi was crowned Queen of Denson in the Hospital "Green Room."

Her selection came as a surprise to many residents but the judges' choice appeared to be a popular one last night.

VOLUNTEERS GIVEN AID

Special efforts are being made to secure outside employment opportunities for combat team volunteers who were not accepted because of physical deficiencies or age, it was learned.

To aid relocation supervisors in finding suitable job openings, Leaves Head John L. McCormick is sending each relocation office a list of the names, occupational preferences and background of all volunteers who did not pass the physical examinations.

Men on this list will be given first priority both in clearance through the War Department Joint Board (which establishes eligibility for war plant work) and in connection with ordinary employment opportunities which are received.

Queen Kiku and her two attendants, Mrs. Ikeguchi and Bessie Nakashima, remained in their white beaded domain for five minutes and obligingly withstood a barrage of flash bulbs.

William O. Melton, assistant Project director, who crowned the queen had the first dance with Queen Kiku following the coronation.

The royal party was sans the usual elaborate dust-sweeping gowns. They were attired in simple, dark three-quarter length afternoon frocks.

Her royal highness was presented with a heart-shaped plaque with a red, white and blue V flanked by smaller hearts as a memento of her ascension. Her attendant also received plaques.

The royal group will have a busy two-day schedule. Queen Kiku will cut the ribbon to the entrance of the Block 22 carnival grounds this afternoon at 2. Tonight during the talent show, the group will be introduced to the general public. Tomorrow night they will draw the tickets at the raffle drawing.

More carnival details are on page 5

RAILWAY JOBS

Those interested in working for the Santa Fe railway company are asked to leave their names immediately at the Outside Employment office.

DENSON

TRIBUNE

Published Tuesdays and Fridays by the WRA. Editorial office: Adm. Bldg. No. 4, Denson, Ark. Telephone: 42

Editor.....Paul Yokota City Editor...Richard Itanaga Feature Editor...Ayako Noguchi Production Mgr...Roy Kawamoto Staff Members: Harry Kuwada, Ben Matsumoto, Florence Sayegusa, Fay Sakata, Humi Hanashiro, John Tamura, Masari Suruki, Nobuo Shino

at RANDOM BY PAUL YOKOTA

OLD FAITHFUL

There's a middle-aged woman in our block who is paralyzed on one side of her body.

Because of her condition, she is unable to go to the dining hall for her meals.

In the same barrack is another middle-aged person, a man who had been the hired man of the woman before evacuation.

Loyal to her in time of illness, he has devoted considerable effort and time for her comfort, bringing her meals three times daily and performing various little duties to aid her.

These things he has taken it upon himself to do and he has served willingly and cheerfully.

ON T-SHIRTS

The fad of getting group emblems on T-shirts has spread to the TRIBUNE staff.

The only thing is that Li'l Denny becomes slightly distorted when our venerable production manager sports one of them.

ON THE FLOOD

Northern Arkansas seems to be bearing the brunt of the flood waters at the present time, but we're wondering when they'll come down south.

to other camps. However, this group represents a distinctly small minority. They are not in the majority as some propagandists would have the public believe.

It is logical to assume that evacuees who are unable to re-settle will remain here for sometime to come. There is no concrete reason to believe otherwise. The setting up of and consolidation of various services necessary to a normal community are continuing. They are being planned on a "durational" basis. Cooperative shares recently went on sale. The food raising program is just getting into full swing with ambitious plans being made for the future.

The loss of manpower hours and the cost of moving all of the Center residents would be tremendous. We believe the expense involved will be seriously considered this time by responsible authorities before a decision to move is made. The sum already paid to railroad companies should be remembered.

In the future we believe segregation will be made discriminately. We do not look for a repetition of the hysterical, soul-straining days of a year ago when all persons of Japanese ancestry on the West Coast were indiscriminately placed behind barred wire fences.

Judging from recent developments it is obvious that those in the seat of power in Washington recognize the sagacity of a careful, individualized segregation.

If the present enlightened program is followed, the lot of loyal evacuees should improve steadily and surely. We believe their unbroken faith in the American way will not have been in vain. They may be assured that whatever segregation takes place after this will better their position. It is for the actively disloyal evacuees to feel squeamish.

--RI

NO MASS

Evacuation Planned

Dillon S. Myer, national WRA director, recently disclosed that the "WRA is ready to move very soon to segregate the pro-Japanese from the loyal-to-America evacuees of Japanese ancestry."

He said segregation "will have to be done largely on an individual basis." According to Myer, the WRA will make most of its moves during this spring and summer. He emphasized that "troublemakers and agitators" would be dealt with separately from the merely passive pro-Japanese, and the former would continue to be sent to detention camps or "isolation centers" rather than being kept with the passively disloyal.

This announcement has set off rumors here which have been outlandishly misinterpreted and distorted. Talk in some quarters have Denson's populace moving to Utah by July. Many susceptible persons have fallen prey to these baseless opinions and lowered morale has been the negative result.

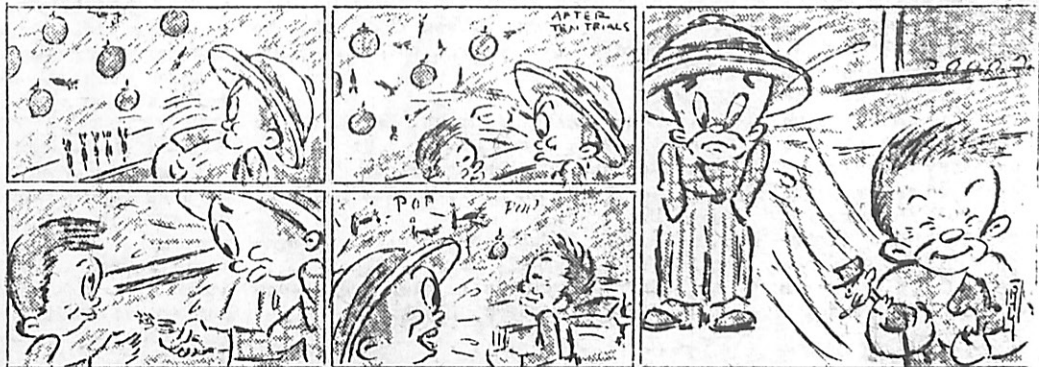
Project Director Paul A. Taylor has not been informed of any mass hegira involving the residents of this Center.

It is true, according to Myer's statement, that a number of disloyal persons will be moved

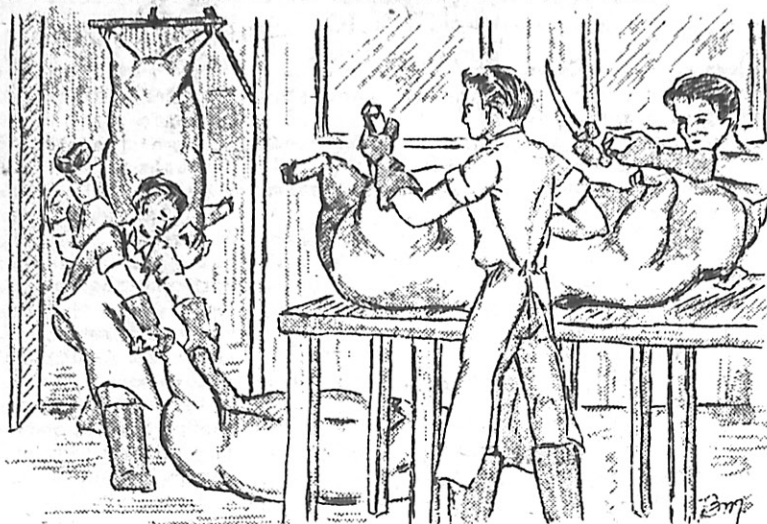
DENNY

IT NEVER FAILS

ROY KAWAMOTO



SLAUGHTERING IS AN ART WITH THEM



HERE
AND
THERE
WITH
RICHARD ITANAGA

IN GOOD HANDS

The other evening on one of our treks between the barracks, we overheard a young nisei mother telling her small daughter, "America is our home, honey, and you must learn to love her. You must listen to what teacher tells you and learn to sing the praises of your country. One day soon we will leave 'Japan' and join our daddy in America."

The Center hogs are shown going through the scraping and gutting (extracting the intestines) process in the above sketch. The slaughter house is located in Deep Elm. This work is done by seven young men. They are Jimmy Kamanishi, Hiromi Onishi, Kiyoshi Sumida, Ben Uda, Hank Hamataka, Jim Okumura and George Otsugi.



GILA NEWS-COURIER

Some News-Pictures spend day taking pictures of center life.

Seven Indian chiefs and two squaws from Pueblo and Chawtaw tribes present an Indian dance program in full ceremonial dress.

MT. MOUNTAIN SENTINEL

Evacuees from various relocation centers helped save \$2,000,000 worth of Montana sugar beets last fall, reported J. P. Brennan visiting center to recruit men for the farms.

January weather returns with snowflakes and "first class" blizzard.

ROHWER OUTPOST

Seventy-seven high school students from the music department visited McGehee high school to present a program.

MANZANAR FREE PRESS

Approximately 6000 articles of clothing have been made by the manufacturing division since January. More than half this number were hospital uniforms.

LETTERS TO THE EDITOR

To the Editor:

We express our sincere gratitude for the last editorial in which the importance of the Center's agricultural project was stressed.

Every resident, both young and old, capable of working and especially those who plan to remain in this Center for the duration must now realize the importance of that project in its relation to us.

The farms at Deep Elm are large and expanding. The present manpower there is unable to cope with the various chores in producing a satisfactory crop and a limitless number of workers is needed immediately.

We hope our urgent need for manpower will be met by our fellow residents soon. We will be the winner or the loser. It's all up to us.

Deep Elm Workers

CO-OP INFO

When you join a cooperative you become a part owner of it and through your vote you help control its operation. Its administration is handled by qualified employees. A cooperative exemplifies ownership by many for the service of all. Cooperative services are organized to meet consumer needs.

A co-op, in other words, is a service organization. It thus has a social, as well as an economic significance.

Democracy begins at home and through your membership and activity in the Jerome Co-operative Enterprises, you will be practicing democracy in the economic field. Remember that in a cooperative it is as necessary for the membership to be active as it is for the employees to be efficient, for without an active general membership, democracy cannot prevail.

SUPPORT IT

The Center-wide carnival deserves your patronage. The proceeds will go for a good cause...that of purchasing and building things recreational. Juvenile delinquency has been surprisingly low so far here--the profits will be used to keep it that way.

EGGSACTLY

In Poston center, the poultry crew recently had a farewell party for a fellow worker---on top of the chicken coops...and a cackling good time was had by all.

FOLLOWING ORDERS

In Store 1 we saw two ants running along at a great rate of speed across a cracker box. "Why are we going so fast?" asked one. "Don't you see?" said the other. "It says, tear along dotted line."

FACTS OF INDIANAPOLIS, IND., SENT HERE BY CITY

For the benefit of those who are undecided as to where they wish to relocate, the chamber of commerce of Indianapolis, Ind., has sent facts concerning its industries and recreation.

According to the report, Indianapolis is a great trade area and one of the richest agricultural sections of the country. Unlike many cities, it is not dependent on any single industry or a group of related industries, but enjoys the advantage of a wide diversification of industrial resources.

Among the items produced there on large scale are pharmaceutical products, silk hosiery, motor truck engines, automobile accessories, bifocal lenses, aircraft engines, shoes polish, paper products, phonograph records, theater sound equipment and canned foodstuffs.

Having the largest stockyards east of Chicago, Indianapolis is a great livestock and grain market.

As for recreation, everything from automobile races to museum is included.

PERSON WITH PHOTO SOUGHT

Mrs. Matsu Tsutsumi, 17-74, seeks a person who took a candid camera picture of her husband's funeral services on April 21 at Hall 7. The "official" photo blurred making it important that another picture be found.

LOST

MEN'S 15 jewel Bulova wrist watch, between Block 46 and canteen 2. Return to 46-10-F or TRIBUNE office.

MINGLED gold and gray colored Conklin pen, between Block 23 and 36. Return to elementary school office.

GREEN Shaeffer pen with name of Kazuo Shimazu engraved. Return to TRIBUNE office.

Medical Staff Commended

The Temporary Community Council passed a joint resolution with the block managers commending the local medical staff for their service to the community at a meeting recently.

The Council and Managers are planning to honor the physicians, surgeons, dentists, optometrists, pharmacists and registered nurses at a banquet soon.

Kay Kawachi, James Hashimoto and Harold Ouchida were appointed to serve on the advisory board which will determine the distribution of proceeds realized from the Center-wide carnival.

CLUBS ON

PARADE

TRIPLE E

Installation of the newly elected officers of the Triple E club was held Wednesday.

Adviser Mas Masuoka swore in the following: Masari Suruki, president; Kay Hamada, vice president; Hiroshi Mayeda, publicity; Tee Saisho, athletic manager and Edday Hamada, sergeant at arms.

Mary Nakahara spoke on "Hunters at Heart."

ZENITHS

The community minded Zeniths joined the young men and women of Block 17 Sunday to give their regular dining hall crew a day of rest. Working the whole day, the Zeniths handled the dish washing and waiting chores.

STILL WATERS INVITING TO MOSQUITOES

Residents are asked to refrain from making dams in the block ditches by James H. Wells, administrative officer.

Keeping stagnant water near the barracks helps to breed malaria mosquitoes, it was said.

Youths Must Register

Twelve youths who have attained the age of 18 have registered for the Selective Service during this month thus far, announced A.G. Thompson, superintendent of education.

Notices have been sent out to boys 18, 19 and 20 years of age to report within five days to the Education office to file their complete registration record, since the records of the Selective Service board of Choctaw county are incomplete.

COMMITTEE OFFERS AID

To provide necessary information and guidance for those who are planning to resettle in New York City, the N.Y. Advisory Committee for Japanese Americans has been organized with the approval of the WRA and the Committee on Resettlement of Japanese Americans.

Services offered by this committee are meeting trains, securing suitable lodgings, general counselling, and hospitality. In case of emergency upon arrival in New York, the Travelers Aid Desk situated in the train and bus terminals should be contacted, the Committee said.

Inquiries regarding employment should be directed to Robert Cullum, WRA office 50 Broadway, New York City.

VISITING Servicemen

Servicemen visiting the Center this week are: Sgt. Ray Kuritoni, Camp Grant, Ill.; Sgt. Shig Nakao, Camp Berkeley, Tex.; T/5 Leo Masakawa, Army School, Memphis, Tenn.; Pvt. Masaru Sasaki and Pvt. C. Shiroyama, Fort Leohard Wood Mo.; Pvt. Joseph Nishida, PFC Miyaki H. Tawaka, Corp. John Iriye, and PFC Arthur Miyai, Camp Robinson, Ark.

NEW MANAGER

With the resignation of Paul Matsuzaki, Tatsuo Hiramoto was installed as the new block manager of Block 17 Saturday night. Hiramoto and Matsuzaki were honored at a musical show held in the new arbor.

Telephone for Emergencies

The telephones on the various corners in the residential area should be used only in cases of emergency hospital calls, for police and for fire calls, warned Administrative Officer James H. Wells.

PRESENTING QUEEN KIKU AND HER ATTENDANTS



Mary
Ikeguchi

Kiku
Nakamichi

Bessie
Nakashima

Her Majesty, Denson's Queen Kiku Nakamichi and her two attendants, Mary Ikeguchi and Bessie Nakashima, are shown in the drawings by a staff artist. Queen Kiku was crowned last night at the Coronation Ball. She will be introduced to the general public during the talent show tonight on the Block 22 grounds.

Four Bands Featured On Tonight's Program

Featuring four orchestras and bands, Denson's top entertainers and guest artists from Rohwer will perform tonight from 8 before carnival fans in Block 22.

Musical groups taking part are the visiting Rohwer orchestra led by Akira Umemoto, which specializes in popular Japanese songs; Bob Kameoka's Hawaiian Serenaders, a local jazz band, and the Hari-Kiri band.

Featuring the issei portion of the program will be the appearance of professional classical dancer Yuriko Uyematsu and her students from Rohwer.

Kiyoshi Hamanaka will provide the evening's comedy with his interpretation of "The Song of the Flea."

Akimi Uyeoka will sing and play accordion numbers. Barbara Joy Toshiyuki will present a tap dance.

Vocal numbers include a duet, "My Gal Sal" by Bill Nikaido and Anna Tanaka, the George and Sam Seno and Jaok Sakai trio singing "A Pretty Girl is Like a Melody," and solos by Shugo Seno and Julia Arie.

Minus his original partner, John Hirohata, Ichiro Miyagawa will appear again in

the "manzai" with a new partner, Fusae Ozaki.

Other Japanese numbers will include vocal solos by Miwako Nishimura, Eiji Yamashita and Helen Toye.

More Than 40 Center Clubs Participating in Carnival

More than 40 Center clubs will participate in handling the various booths for the weekend Carnival which will open at 2 p.m. today at the northeast corner of Block 22.

Clubs in charge of the concessions are Eleveners and V-12 Zephyrs, basketball free throw; Densonners, Triple E's and 6-40 Hi-Teens, bingo; Boy Scouts, baseball throw; Octagonians, wheel of chance.

Blue Wave Clippers and Duration Knights, horse race; Socialite's and Twix-Teens, bean bags; Royal Coronets and Vanguardites, ring 'em coin; Vanguard's and Vanguard Jrs.,

SPIRITED RIVALRY SHOWN IN QUEEN RACE VOTING

Spirited campaigning by supporters of the six queen contest semi-finalists marked the race which closed Tuesday noon.

Though hard pressed, Mary Ikeguchi led all the way and garnered the greatest number of votes in the popularity balloting with 806.

Miss Ikeguchi was closely followed by Bessie Nakashima with 742 votes. Queen Kiku Nakamichi, who won the Queen judges' nod, finished third in the Center-wide contest with 662 to easily qualify for the finals.

Cherry Yoshimura and May Hamade tied for fourth with 563 tallies apiece followed by Tamako Hiram who was but 40 votes behind with 523.

DRAWING FOR RAFFLE SLATED

Queen Kiku Nakamichi and her attendants will draw the prize winning raffle tickets tomorrow at 9 p.m. on the outdoor stage in Block 22.

The winning ticket holders must be present at the time of drawing, it was announced by Al Tsukamoto, raffle ticket chairman.

The first prize will be a three-piece luggage set; second prize, two-piece luggage set; third prize one suitcase. Twenty five additional prizes will be given. A special prize to be given away will be the prize winning drawer chest at the recent "koku" contest.

penny throw; Musket-ers and Wolverines, ring 'em article.

6-10 Toppers and Cal-Arkettes, wagon ride; Islanders, balloon bustin'; Shamrocks and Carpe Diem, fish 'em; Wildcats and Victorettes, airplane dart.

Avidians and 6-40 Hi-Teens, ring soda bottle; Denson Knights and Debonnairs, penny pitch and ping pong pitch; Zorros, dunk a zorro; Progressors and Lotus, shufflette, Cardinelles, ticket sales booths.

The food committee is composed of Densonita Co-eds, Cal-Teens, Jovial Peppers,

(cont. on page 8)

DENSON, ROHWER ALL-STAR CAGERS TO CLASH

All-Star men's cage teams of Denson and Rohwer will tangle for the second time at 3 p.m. today at Court 33 as part of the Carnival festivities. Denson won the first match, 25-21.

Rohwer will again see dynamic Nori Masuda

who led the locals in the first tussle. George Takahashi and Babe Okura, two fast and accurate distance shooters will be posted at the guard positions. Lanky Frank Kobo, the A league's top scorer, will man the forward spot along with Masuda.

Hiro Kayasuga, who might have turned the tide in the first tilt if he had not been ousted in the third quarter on fouls, will try to change it to a Rohwer triumph.

The "Mirror Twins," Kayasuga and Tak Kawagoe, and company will be up to their full strength against the local quintet who lost Mas Hashibayashi, first string center, and Jim Murashima via the leaves program. Frank Sugiyama will probably replace Nishibayashi at the pivot post.

Another threat from the neighboring team is Oscar Tamura who will undoubtedly kick up a lot of dust in the entanglement.

Inter-Center Women's Hoop Game Scheduled

In a return basketball game, Rohwer's all-star women's team will meet the Denson amazons at 2 p.m. today on Court 33.

Rohwer won the first tilt, 13-12.

Coach Nori Masuda's

probable lineup will be Eva Yoshida, Toshi Mishimura and Bernice Kanenaga, forwards, and Katie Hamataka, Lillian Taniguchi and Evelyne Wando, guards. Yes Choro and El Okada will be the officials.

Softball Leagues To Get Underway Monday

Long Beach, Hanford Will Tangle

GAME SLATED FOR TOMORROW

Long Beach, top team in the A league, will tangle with Hanford, one of the toughest ball clubs in the loop at 2 p.m. tomorrow.

Although the El Bees whipped the Florin baseballers in a hotly contested tussle two weeks ago and Hanford was nudged out by the latter, Hanford has the power to defeat their opponents.

Long Beach's Tee Saisho and southpaw Koo Ito, will attempt to stop the Hanford attack.

Shig Tokumoto, the submarine artist who hails from central California, probably will be the moundman to face the one time "dark horse" nine.

Trouble makers for Long Beach will be Hanford's sluggers, Goro Moriyama and Diok Kunishima, who usually come through in the pinches.

TERROR BEES EDGE HI-TEENS

The Terror Bees skimmed over the 6-40 Hi-Teens in the last two minutes of play when Haru Nitta sank two digits to cinch the game, 29-26.

At half time, the



May 28, 1943

Page 7

FLORIN MEN HOPE TO GET BACK INTO WIN COLUMN

After being stung, 3-2, by El Bee's stunning upset, Mac Kurima's veteran Florin squad will attempt to chalk up its second loop win at the expense of Ed Tsukimura's hard-hitting Bowles nine Sunday afternoon.

Bowles will rely on powerhouses Yutaka Tokumoto who has

hit the pill at .444, and Fred Taniguchi with a convincing .420 average.

Southpaw Nob Sasaki and Kaz Namba form the probable starting battery for Bowles.

Florin's Herb Kurima will probably get the starting assignment on the mound with Hutch Omachi behind the plate.

BLOCK 17 SUMO TOURNEY RESCHEDULED FOR SUNDAY

The sumo elimination match slated for last Saturday will take place this Sunday starting at 6:30 p.m. in the Block 17 ring.

All sumoists are requested to participate in this match. Those picked will go to Rohwer for an inter-

center match. Spectators are asked to bring their own chairs.

Elk Grove Takes Hanford B WINNERS POUND TWO PITCHERS

The combined pitching efforts of Moohi Kimura and Jack Matsui were insufficient to stop the battling Elk Grove baseballers as they thumped Hanford, 11-7, in a B league contest Wednesday at the Block 21 athletic field.

BLOCK 10 TO BE SCENE OF TWO GAMES

Both Aye and Bee softball league teams will make their debut at 6:15 p.m. on Monday in Block 10, when the Lil Giants are pitted against the Maintenance team in the Aye league, while in the Bee league, the Maggots challenge the Knights of 20.

Four members of the Maintenance squad who played for one of the top teams in Fresno will cause a lot of trouble for the Giants. The Lil Giants have a pick-up team, made up of veterans.

George Takahashi will chuck for the Giants against Frank Nobayashi.

The first Bee tilt will be played on the north side of the field.

DURATIONERS SMOTHERED

In a practice softball fray, the Mustangs overwhelmed the Duration-Knights, 20-5, Wednesday at the Block 10 athletic field.

Tee Saisho and Joe Yamagata hurled for the winners with Frank Omatsu on the receiving end.

Maritime Union Men Reinstated

The Japanese American Maritime Workers' Committee formed in Manzanar to facilitate the re-employment of all former seamen has made a survey in joint effort with the Japanese American Committee for Democracy in New York.

According to Mathew Dashane, representing the Sailors' Union of the Pacific in Washington D.C., it has been announced that the Army and Navy, FBI and the Military Intelligence have okayed the plan of releasing the merchant marine seamen from the relocation centers for sailing on the Great Lakes.

The restriction ban for the resettlement of evacuees in the Eastern Defense Command was lifted under the following conditions:

(1) Once an evacuee gets an indefinite leave, he is free to go wherever he wishes, including the eastern defense area. This means he can get his leave for a state in the middle west and then go east.

(2) If an evacuee wishes to go

directly to New York (assuming he has a job) he must be passed by the joint hearing board composed of the War and Navy departments, the War Shipping Administration and the WRA. This board will consider individual cases of seamen for possible release to New York for active service in the Atlantic.

All those interested in sailing on the Great Lakes may contact their respective union agents. Members of the M.C. and S. of the CIO should contact Jack Lawrence, 317 W. Fort St., Detroit, Michigan. Members of the Sailors' Union of the Pacific are advised to write to Harry Lundberg, secretary-treasurer, 59 Clay St., San Francisco, for letters of employment and membership.

Some men in this center who are members of the various unions are Shinichi Gibo, MFOCW; Masanori Hirasuna, MCS; Yoichi Ishii, MCS; K. Saiki, SUP; Minoru Takaki, MCS; Shigeo Tengan, MCS and Shichi Yoshida, MCS.

BALTIMORE CITY HOSPITAL WANTS NISEI WOMEN

Thirty to 40 nisei girls between 19 to 35 years of age are wanted in the Baltimore city hospital, Baltimore, Md., as students in a one-year course for practical nursing.

The hospital provides full room and board, uniforms, laundry, medical care and \$40 a month for cash allowance. Including the three-month probationary period before the classes begin, the course will last 15 months.

Further details on the exact nature of the course, application blanks and school's suggestions for interviewing are being sent. Girls should begin preliminary recruiting. Arrival of this material is pending and should be available to begin training in June.

Graduates are eligible to take the state board examination in Maryland for licenses as practical nurses. Employment is fairly definite after graduation, it was said.

Jack Sakaguchi, Mich Matsunaga and Tsugio Jofuku.

KNIGHTS LEAD RAFFLE SALES

Denson Knights took the raffle sales lead from the Densomeners and Vanguardettes in the Wednesday morning returns with 50 books. Vanguardettes followed closely with 46 books.

MORE ON Carnival!

(cont. from page 5) 28 Twinklers, GSG, Vanguardettes and College Student Group while the decorations for the Coronation Ball were in charge of the Mensengs and the TRIBUNE art staff.

WEIGHTLIFTING SHOW TOMORROW

Body building exhibitions and a skit in Block 22 is in store for weightlifting fans who attend the Carnival tomorrow evening, according to Mits Masuda, gym instructor.

Eleven "Supermen" slated to give demonstrations in clude: Mits Masuda, Zen Arihara, Harvey Kitaoka, Nori Kitakata, Nob Kume, Mas Masuda, Fred Taniguchi, George Yuki,

ONDO PLANNED FOR CARNIVAL

An ondo dance sponsored by Block 17 residents will be a special feature after the Carnival raffle

drawings at 9:30 p.m.

The public is invited to participate and are asked to bring towels.

WEEK'S CENTER DEPARTURES OF EVACUEES NUMBER 55

Mr. and Mrs. Choshin Daluzaku and Ryotoku Onaga, all of 44-4-A, left Monday to work in Chicago. Also leaving on Monday were Takahashi Ighida, 8-1-D, and Sadao Yatabe, 5-4-E, who went to Rocky Ford, Colo.; Ted Tetsumi Inouye, 19-2-C, and Heimatsu Kawaoaka, 6-9-F, who are employed in Belle Fourche, S.D.; Isao Matsuyama, 44-4-E, who departed to Knox, Ind., and Jukichi Taniguchi, 5-3-A, who went to Vale, S.D.

Masahiro, Masaye and Masanori Niimi, 2-2-C, left for Cincinnati,

Ohio, on the same day while Shizuko Margaret Mori, 42-7-E, went to Mesa, Ariz.

Frank Ichiro and Satsuki Yamade, 16-1-B, left for Toledo, Ohio, on Tuesday. Others leaving on Tuesday were Roy Koichi Fukuda, 45-3-B, and Satoshi Kusakai, 30-8-C, for Detroit, Mich.; Martha Nobuko Mizue, 16-10-F and Chiyeko Matsuoka, 3-11-D, for Chicago, Ill.; Toshio Kiino, 9-3-C, for Santa Fe, N.M.; Lester and Tomi Wyemura, 29-2-C, Henry Saburo Hamataka, 11-7-D, Sumiko, Takeishi and Kenji Nobori,

11-7-C, for Cleveland, Ohio; Akiye and Akira Ishida, 42-8-F, for Lina, Ohio; Frank, Gertrude and Lucy Ikoma, 5-2-C, for Ann Arbor, Mich., and Mary Hitomi, 17-8-A, for Grand Island, Neb.

Those who left Wednesday are May Ichinaga, 46-1-A, for Chicago, Ill.; Kearney and Ruth Kunishige, 38-11-B, May, Yukiye and Satoru Sasaki, 5-11-C, Jonobu Nishimori, 5-11-B, Frank Kochigama, 8-7-D, Mr. and Mrs. Henry Sasaki and children, Carol and Henry Jr., for Denver, Colo., and Masao and Yoneo

Kiino, 9-6-D, for Jackson, Mich.

To work in a candy company in Chicago, Kiyomi Charles Kariya, 4-6-D, Henry Negoro, 15-4-F, George Yuasa, 5-1-C, and Arthur Yamaji, 18-3-D, departed on Wednesday.

Accepting employment in Cleveland, Ohio, Yoshio Kishue, 28-7-F, and Takashi and Toshio Uyemura, 14-10-F, left the center yesterday.

Yoko Arimura, 32-11-F, left yesterday for Chicago while Shigeo Yamana, 16-8-B, left for Oakpark, Ill., and Ishio Enokida, 32-12-B, to Maywood, Ill.



カニバル

今明日盛大に!! 女王は中道まきく嬢!!

万人待望のカニバル!! その前奏曲である女王戴冠式及びダンスは昨夜病院食堂で盛大に催された。

披露まで最後まで残った中道まきく、池口ノリ、中島ベシーの二名中審査員投票の結果名譽ある女王の冠は中道まきく嬢の頭に載せられた。同嬢が女王として君臨する事となつた。今明日中のプログラム中の呼物、一世ナイト二世タレント合同の遊藝会は、今夜八時より開演されるが朗和より日本舞踏の植松百合子師匠と川下生、及び梅本明氏指揮のオーケストラ流行歌々々一行の助演もあり、興味は一段と加はつてゐる。場所一世ナイト側よりハッキリバンドの西村みゆき、ヘレン、東原山下、栗二の流行歌、宮川一郎、尾崎房枝の名コンビ、万才等々。二世タレント側よりハワイアンオーケストラ、チャスバンド、多アダンス等種々盛況、派山のプログラムである。福引は土曜夜九時女王及び侍女により観衆の前で行はれる。幸運のテケツ所持者でも其の場に居なくては受賞権がない。賞品は既報の他に二十五等まである。因に画日の盛事も記せば、金曜日午後二時コンセンシブ、開演。三時朗和対野球。六

靴購買券は郵便で

今後靴購買券申請書及び購買券発給は郵便に依つてのみなされる。タムソン氏より發表された。諸親者は各区长より書式を受取り正確明瞭に二通作製し、

Education Section, Administration

宛郵送されたし。切手無用

時十五分野球。八時遊藝会クマシ登壇。

土曜日午後二時野球。三時コンセンシブ。六時十五分野球。八時ウィットリフト、籃球、賞品発表。九時福引。

高カニバルの最後を飾る特別プログラムとして、頭行列が十七区住民の主任で行はれる。一般参加歓迎。

成人學校修業式

来る六月一日午後八時、第廿二区市場に於て修業式あり。校長發表修業生五百名。



本月中旬ケンブリヂで催されたフレンドセンター主催の全転住所画展は盛會程に終了した。入送者左の如し。一等 新月、小畑千浦、トリス、二等 晴水行、地平、線、財茂、ホルバート山、三等 寂、田舎、鶴田、依アマチ。尚ほ選外佳作十点中当所守野氏(千代)の作品も入賞し大いに面目を旋した。因に入賞者の最も多きはユタにてアイカホ之に次ぎ、アガソニーでは二画センターを通じて卓野氏の一点のみ。

戦闘部隊へ 更に二名入隊

二世戦闘部隊の志願者、ジヨチ大浦、しづる菅谷の両君は先週、エルビー兵營に入營した。之水で常用より四名入隊した訳である。

第一世を 雇入水度

内務長官、イギリス氏の元弟、ジョーン、イギリス氏は並法の話せる既婚者で経験ある一世の家族も氏のシカゴにある農園に雇入水度いと當所へ申込んで来た。二階五室の客室と庭園、ミルク、ポーク、卵、野菜を提六する由。希望者はリーアオイスに問合せ水たし。

マツリや蚊発生防止の爲め区内の溝に水溜りを作らぬ様とウエルズ氏より注意。

各賣店には在庫品調査の爲め来る六月一日迄は終日休業する。

健康児診察時間

健康児診察の為め毎金曜朝
左記の場所まで病院車が母
子を迎へに来る。

- 十一区食堂 午前九時半
- 八区食堂 ー 九時四十分
- 四区食堂 ー 十時。

因に病院車の各戸別送迎は
禁じられて居るとマ病院長
は発表された。

收容所行々感状

テキサス州クリストル市收
容所に居る夫や父に加ける
為めに詩歌して居る人達は
期待して居る程早く行く事
は出来なういだらうと、りて
マのウツア氏は言つてゐる。
その水は該收容所の建築工事
に牛俵とした者が先づ水
族と一所に居る様子を興へ
と水るからである。

飼犬の豫防注射

センター民の飼犬は本週中
に全部狂犬病の予防注射を
受けなくてはならぬとライ

ス氏発表す。場所は農事部
事務所(アビルス)で、本日は
午後二時より八時まで。明
土曜は午前九時より午後四
時まで。注射料は無料であ
る。

郵便局より

新聞や雑誌を送る人は必ず
差出人住所書入水と、規定
料切手も貼付さ水たし。

週末諸保留

- スクエークラス 二十九日正
午後二時 第廿五ホール集
○相模原第十七区の土俵で
毎大土日の夕飯後練習。
- ヴァレー吟社 廿日(日)夕
十五-三-Aの中島居に於て。
- ぼと、や、す、淡、句、會 廿日
午後七時より四-十二-C。
- 川柳志のうみ吟社 廿
日午後七時より六-十二-D。

市市で注意!!買物の受
取証は来る。月一日までに3
01-Fの事務所へ呈出さ水
たしとCOOPよりの要求である。
COOPの株券は目下賣出中
の由なるが之を(五帯株)買ふ
事によりCOOPの會員になる事
が出来ると、右株券は巨長
又はCOOPの代表者より購入す
る事を得と。最近COOP代表者
とアスタットの會合があつた。

- 詩吟クラス 廿日午後二
時より第十九ホールに於て。
- 談曲 二十九日正午後七
時廿五ホール。お話亭先生
○生長の家集會 廿日午
後七時十五分。お話亭先生
○次週の映画「テンパンア
イ」アリス・フーリジョン主演。
- 野球 A組午後二時より
土曜日ーハンホード×ロビン
日曜日ーボリス×フロリン
- B組毎日午後六時十五分
金一布哇×マテラ。エーワラ

1×ハンホード、日エルク
×布哇、月ーロビン×マテラ。
石穀製造に興味を持つ
人三名至急援助を乞ふ。ハ
ドソン氏又は六区の大山氏迄。

失ひ物

灰黒色で赤い点のあるワタ
マン刀生筆、お拾ひ方は、中
四-11-C。金瀬までどうぞ。

救急日安楽会

- 傳馬佛敎會 廿三講堂
○戦死者先生追悼會
二十九日(主) 午後八時
法話 河内庸教授
- 日曜學校 五月廿日
幼年部 午前九時
司令者 曾我ヒデミ
法話 河内庸教授
童話 川本クワイ
- 青年部 午前十時
司令者 松井太郎
法話 河内庸教授
午後八時
司令者 川野春子
法話 河内庸教授
- 基督敎會 五月廿日

鐵道の傷口
サンファイ鐵道會社の鐵道就
傷者募集に近日吉山氏が果
所するが希望者はリ-ン事
務所に氏名住所と記入申込
ま水たし。

- 日曜學校 午前九時廿三區
指導者 加納牧師
- 英語禮拜 午前十時半
於廿三區講堂
司令者 安藝牧師
- 説教 橋本牧師
- 邦語禮拜 午前十時半
於廿三ホール
司令者 待 牧師
- 説教 待 牧師
- 招魂祭記念禮拜 午後二時
於廿三講堂
- 司令者 阪口牧師
- 邦語説教 待 牧師
- 英語説教 安藝牧師
- Y.P.F.メソッド H.S.P.E
五月廿日 午後八時より
廿三區講堂及びホールに於て。

安藝牧師夫人は嬰兒を産
み水し由一櫻の寄せ水た同
情に夫妻は感謝さ水て居る。

- Y.P.F.メソッド H.S.P.E
五月廿日 午後八時より
廿三區講堂及びホールに於て。