



1944

RÉSUMÉ



PUBLISHED BY

The

Classes of 1944

ROHWER CENTER HIGH SCHOOL

MCGEE • ARKANSAS

CONTENTS

Administration

Classes

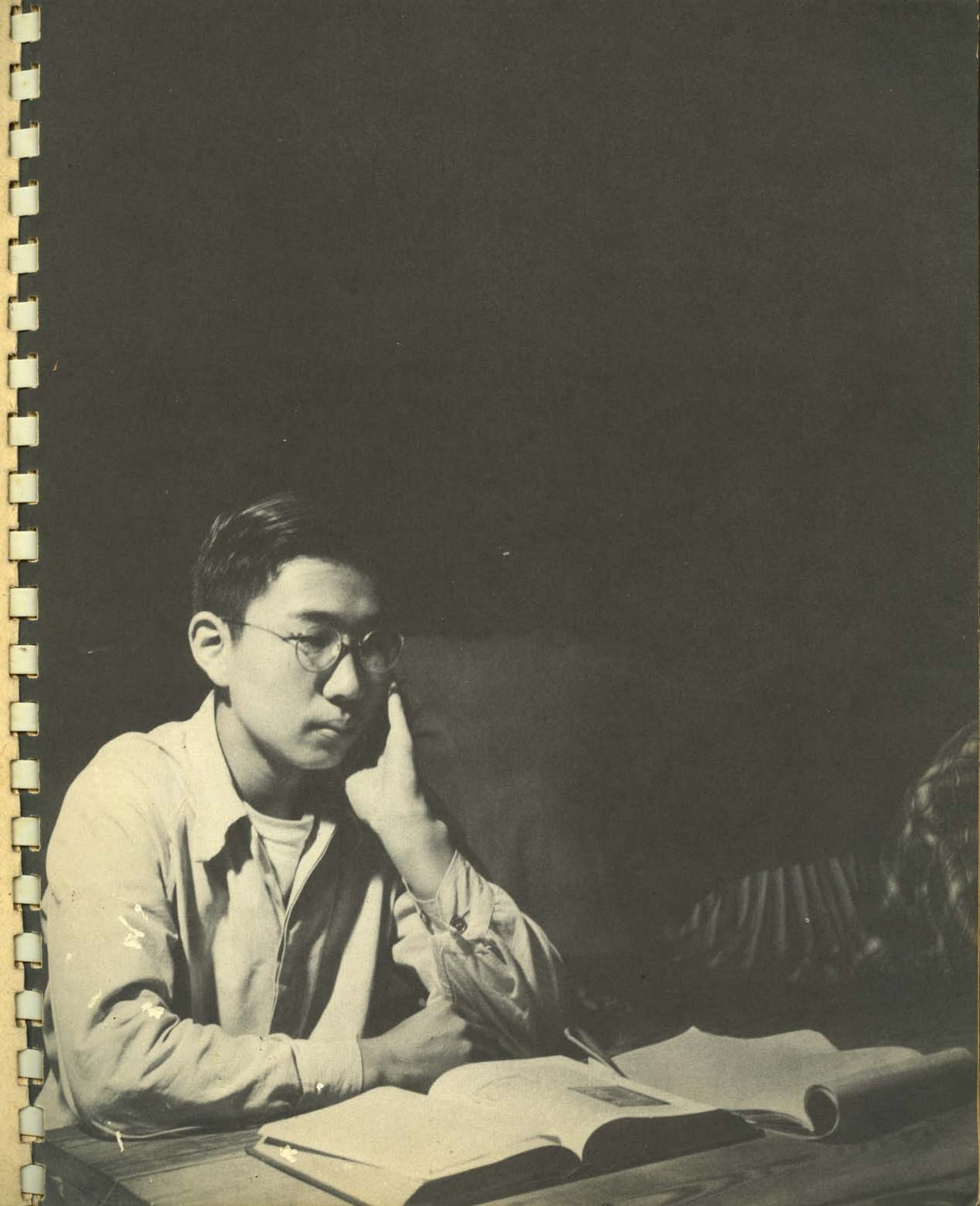
Organizations

Activities

Athletics

Community







Dedication

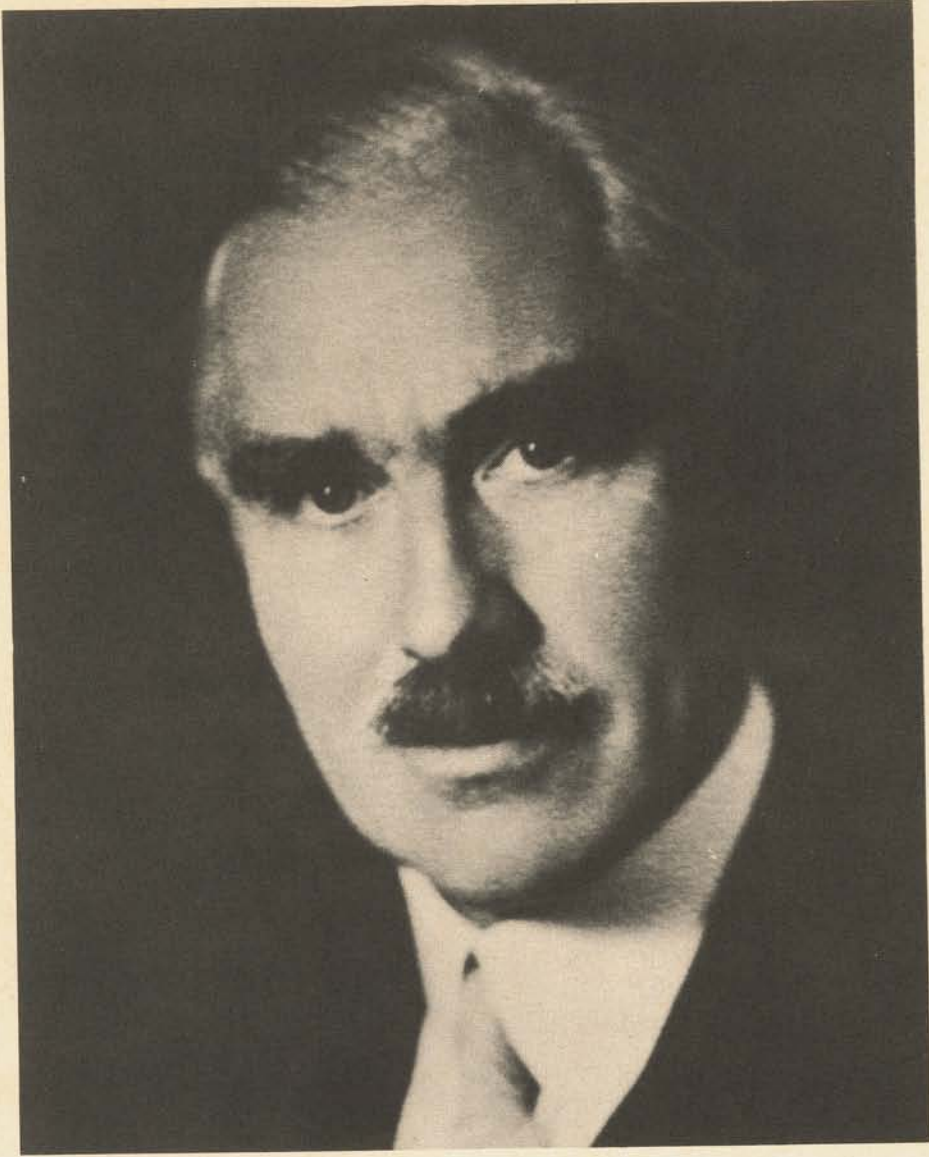
TO

Miss Elaine Simpson

WHOSE FRIENDSHIP AND
INTEREST AS TEACHER
AND ADVISER WE SHALL
REMEMBER, WE DEDICATE

THE

1944 *Résumé'*



THE HONORABLE *Joseph C. Grew*
TO WHOM WE ARE INDEBTED
FOR THE FOREWORD.

Foreword

IN TIME OF WAR, ESPECIALLY, WE MUST TAKE EVERY PROPER STEP TO PROTECT OUR COUNTRY FROM HOSTILE ACTS, ESPECIALLY, FROM ESPIONAGE OR SABOTAGE WITHIN OUR GATES * WE HAVE COMPETENT OFFICIAL AUTHORITIES TO ATTEND TO THAT CONSIDERATION, AND THEY ARE ATTENDING TO IT, CONSTANTLY AND EFFECTIVELY * I DO KNOW THAT LIKE THE AMERICANS OF GERMAN DESCENT, THE OVERWHELMING MAJORITY OF AMERICANS OF JAPANESE ORIGIN WISH TO BE AND ARE WHOLLY LOYAL TO THE UNITED STATES AND NOT ONLY THAT, BUT THEY WISH TO PROVE THAT LOYALTY IN SERVICE TO THEIR NATIVE LAND * * * * * WHAT I WANT TO SAY IS MERELY THIS * THESE AMERICANS OF JAPANESE DESCENT HAVE GROWN UP IN OUR COUNTRY, IN OUR DEMOCRATIC ATMOSPHERE * MOST OF THEM HAVE NEVER KNOWN ANYTHING ELSE * AMONG THOSE FEW WHO HAVE BEEN TO JAPAN, MOST OF THEM COULD NOT STAND THE LIFE THERE AND SOON RETURNED TO THE UNITED STATES * THE OVERWHELMING MAJORITY OF THOSE MEN WANT TO BE LOYAL TO US, AND, PERHAPS SURPRISINGLY, THE FEW WHO DON'T WANT TO BE LOYAL TO US OFTEN SAY SO OPENLY * IT DOES NOT MAKE FOR LOYALTY TO BE CONSTANTLY UNDER SUSPICION WHEN GROUNDS FOR SUSPICION ARE ABSENT * I HAVE TOO GREAT A BELIEF IN THE SANCTITY OF AMERICAN CITIZENSHIP TO WANT TO SEE THESE AMERICANS OF JAPANESE DESCENT PENALIZED AND ALIENATED THROUGH BLIND PREJUDICE * I WANT TO SEE THEM GIVEN A SQUARE DEAL * I WANT TO SEE THEM TREATED AS WE RIGHTLY TREAT ALL OTHER AMERICAN CITIZENS, REGARDLESS OF THEIR RACIAL ORIGIN—WITH RESPECT AND SUPPORT, UNLESS OR UNTIL THEY HAVE PROVED THEMSELVES UNWORTHY OF RESPECT AND SUPPORT * THAT FUNDAMENTAL PRINCIPLE SHOULD APPLY ALL ALONG THE LINE—TO EVERY CITIZEN OF THE UNITED STATES OF AMERICA *

Taken from the Address made at
the Annual Banquet of The Holland
Society of New York, November 8, 1943

PROJECT-WEARY
STUDENTS SEEK
ENDLESS AND ELUSIVE
REFERENCES BETWEEN
BOOKCOVERS.



FROM AN IN-
AUSPICIOUS START
WITH EVEN LESS
THAN BARBET ES-
SENTIALS, OUR
SCHOOL HAS BEEN
IMPROVED GREATLY
IN SPITE OF WAR-
TIME RESTRICTIONS.

One place student handling of school property is constructive, not destructive, under the supervision of able Mr. Ramsdell.

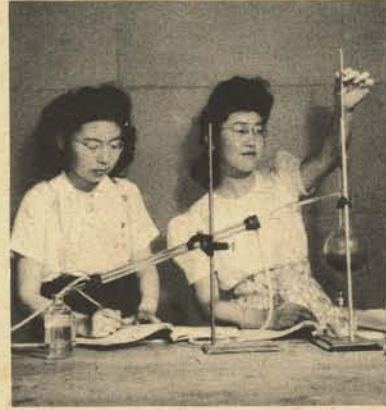
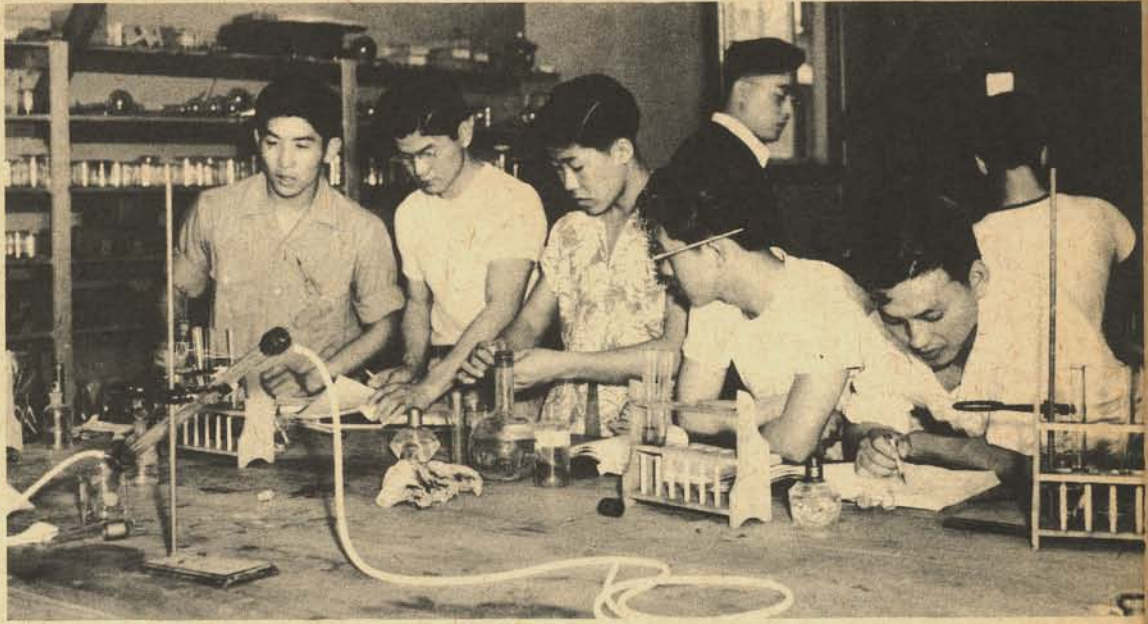




GIRLS LEARN TO SAMPLE THEIR OWN CON-
COCTIONS WITH STRAIGHT FACES AND TO WEAR
SELF-MADE CLOTHES WITHOUT EMBARRASSMENT
— UNDER COATS.



MISS BANKS'
GRADE-SEEKING
STUDENTS SATISFY
THEIR CURIOSITY
EXPLOSIVELY.



FUTURE EINSTEINS
MATCH WITS AND
ARE CHALLENGED
BY MR. COOK, ASSIGN-
MENTS, AND WRITERS
BLACK AND DAVIS.



Wm. L. White

Our ADMINISTRATION



Principal's Message

IN ORDER TO MAKE THE HIGHEST QUALITY OF STEEL, IRON ORE GOES THROUGH MANY PROCESSES AND RECEIVES MANY TREATMENTS. AT EACH STAGE ALONG THE WAY THE PRODUCT HAS USES. CAST IRON AND INFERIOR STEEL ARE BRITTLE AND CANNOT BE TEMPERED TO A FINE EDGE. HIGH GRADE STEEL, ON THE OTHER HAND, IS STRONG. WHEN IT RECEIVES GREAT PRESSURE, IT CAN BEND AND STILL NOT BREAK. WHEN THE PRESSURE IS REMOVED, IT RESTORES ITSELF TO ITS ORIGINAL SHAPE AND IS JUST AS STRONG AS EVER.

GREAT LEADERS AND STRONG CHARACTERS ARE DEVELOPED STEP BY STEP, JUST AS STEEL IS MADE. SOME INDIVIDUALS GAIN SOMETHING FROM EACH PROCESS; THEY BECOME THE STEEL OF OUR NATION.

Wm. M. Beasley



Counselor's Message

WAR INEVITABLY BRINGS TRAGEDY AND SUFFERING, BUT ALSO FORCES US TO LEARN MANY FUNDAMENTALS OF LIFE THAT WE WOULD NOT OTHERWISE LEARN ONE OF THESE FUNDAMENTALS IS THE VALUE OF TIME.

IF YOU WANT A CHANGE FROM YOUR DISORGANIZED AND UNCOMFORTABLE WORLD OF BROKEN DREAMS, YOU HAVE NO TIME TO BE BITTER, TO BE IN DESPAIR, OR TO BE SUSPICIOUS OF OTHERS. BALANCE YOUR BUDGET FOR TIME — WORK, SLEEP, AND PLAY — AND THERE WILL BE NO TIME LEFT TO FEEL SORRY FOR YOURSELF.

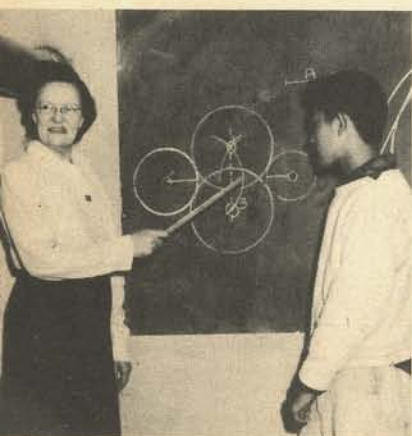
TRY TO HAVE FAITH IN THE FUTURE — A FAITH THAT WILL LAST UNTIL THE TIME WHEN GUNS WILL BE SILENT AND WHEN REASON WILL RULE THE WORLD AGAIN.

Opal Albright



Faculty

ABOVE • LEFT TO RIGHT • MISS FRANCES AMIS, REMEDIAL ENGLISH, ENGLISH; MRS. LOUISE BEASLEY, ENGLISH; RIGHT • MR. DAVID COOK, PHYSIOLOGY, ALGEBRA, PHYSICS; MISS REBECCA BANKS, BIOLOGY, CHEMISTRY; BOTTOM • LEFT TO RIGHT • MRS. MARTHA GUBLO, PLANE GEOMETRY, SPANISH; MISS MATTIE LOU LEFLAR, ALGEBRA, PLANE GEOMETRY, SOLID GEOMETRY, TRIGONOMETRY; MR. TOM FURUYA, MECHANICAL DRAWING.





ABOVE • LEFT TO
RIGHT • MISS PEARL
JACKSON, CIVIC PROB-
LEMS; MISS ELLENE
COOPER, SOCIAL SCIEN-
CE, SPEECH; MISS
LENA MAE CAMPSTER,
SOCIAL SCIENCE; MISS
ELAINE SIMPSON,
LATIN, ENGLISH; MRS.
MATAILEEN RAMSDELL,
ENGLISH, CIVIC PROB-
LEMS; MRS. WANDA
ABBOT, ENGLISH; MISS
MABLE JAMISON, ART;
MISS GUY BROWN,
SHORTHAND, BOOK-
KEEPING, BUSINESS
CORRESPONDENCE.



LEFT TO RIGHT-TOP
 MRS. MILDRED HOWELL,
 FOODS; MISS MARGAR-
 ET TOMIOKA, PATTERN
 DRAFTING; BOTTOM,
 MISS MASAKO KUBO,
 SEWING; MR. BENJAMIN
 RAMSDELL, SHOP.



Faculty

LEFT TO RIGHT. MRS.
 LEOLA PRICE, MUSIC;
 MR. ALTON COLE, OR-
 CHESTRA, BAND.





Faculty

ABOVE • LEFT TO RIGHT • MRS. RUTH A. NIIYA, TYPING; MISS KIYOKO AKUTAGAWA, TYPING; MISS SHIZUKA EYA, P.E. INSTRUCTOR • RIGHT MISS MARIE MITSUDA, P.E. INSTRUCTOR; MR. VICTOR MATSUI, P.E. INSTRUCTOR; BOTTOM • MR. HENRY HAYASHINO, P.E. INSTRUCTOR.





Essential Workers

TOP-LEFT TO RIGHT • MISS KIKUE TOYOTA, REGISTRAR; MISS TERRY OGA, HEAD CLERK; MRS. ROSE KAJIYAMA, STENOGRAPHER; LEFT- TOP TO BOTTOM • MRS. R. KOYAMA, TYPIST; MISS HIDEKO NAKAMURA, LIBRARIAN; BOTTOM • MISS INA ISHIDA, LIBRARIAN.



Relocated Faculty Members

MARY SHIMIDZU

HIROSHI UYEHARA

KENJI HORIUCHI

ELMER TSUNEKAWA

MARY MITSUEDA

TAK HATTORI

FUMIKO SEKI

ROY HATTORI



Wm. Kinschla

our CLASSES

W '44

LEFT • THE SENIORS, A
OFFICERS TALK OVER
PLANS.



MISS ELAINE SIMPSON advisor

CLIFF Y. FUJIMURA

HIROSHI FURUTANI



GRACE IGE

SADAKO IWAHASHI

RUTH KAMBARA



HIDEO KASHITANI

DAVID KATAOKA

MASASHI J. KENMOTSU



JOJI KITTAKA

FUMI KUMAGAI

YOSHIMI KUNITZUGU

ROSIE S. KUSAMA



JACK MIYAKE

YAS MIYAO

TOMIKO MURAKI



SHIGEO NAKANO

HENRY NISHIOKA

GEORGE OGA



HISASHI OGUSHI

SATOSHI OISHI

SALLY K. OKADA



GRACE M. OKAMURA

HUSEN OSHITA

RIGHT • JUST ASK
THESE SENIORS ANY
QUESTIONS REGARD-
ING CIVICS.





KEIKO G. OTOSHI

FUMIO OZAKI

SUZIE SAKATA



YAEKO SATO

MORIYOSHI SHIBATA

OSAMU S. SHIMIZU



KENJI SHINGU

MARY H. TAKATA

MARY TAKEMOTO



SACHIKO TANAKA

MAY YABUMOTO

DOROTHY S. YAMAMOTO



• WITHOUT PICTURES •
CARL FUJIMOTO • LILY HI-
BAHARA • PAUL KATAOKA •
HELEN TAKAHASHI • ISAO
YAMASAKI • JUNE YAMANAKA •

S'44

RIGHT • FOUR EFFICIENT
LEADERS DISCUSS SENIOR
ACTIVITIES.



MISS FRANCES AMIS adviser

MRS. MATAILEEN RAMSDALL adviser

MISS GUY BROWN adviser



MISS REBECCA BANKS adviser

MASACHIKA ARAO

KAZUMI ARATA



TADATOSHI ENDO

ATSUSHI FUJII

PAT FUJIKAWA



HENRY FUJIMURA

KIMI FUJITA

MARY FUKUCHI





LEFT. THE OVER-
WORKED "SENIOR "A"
CABINET RELAX AFTER
A CONFERENCE WITH
THE PRINCIPAL.



SUZIE FUKUTOMI

NAGAO HAMADA

LILYAN HANANOUCI



YOSHIKO HANZAWA

TOYOKO HARADA

KAZUAKI HARUTA



YUKIE HARUTA

HIMI HASHIMOTO

MASAKO HATTORI



YOSHIKO HATTORI

SHIUNRO HAYASHI

YOSHIKO HIGASHI

MASAKO HIRAMOTO



SHIZUO HOJO

SHINYA HONDA

EMIKO HORI



MOTOHIKO HORI

BETTY HORIKIRI

ASAKO HORIMOTO



GEORGE IDA

KEN IGE

MARY IHARA



TSUTOMU IHARA

HIDE IJUIN

RIGHT • TWO POPULAR
FELLOWS HAIL THREE
OF OUR HARD-WORKING
SCHOOL OFFICERS.





ASAOKO IMADA

LEO K. IOHARA

HARRY H. ISHII



MASAO KADOKURA

SHOICHI KAJIMOTO

TAKASHI KAKITA



HARRY KAMITA

HIROKO KAMIYAMA

OTOME A. KAWAHATA



HAJIME KAYANO

FUSAE KIKUMURA

EIKO KINOSHITA



LEFT • TIMEOUT AT THE SENIORS FAREWELL DANCE.

RIGHT • SENIOR "A"
VICE-PREXY "IN
THE GROOVE":



MIYO KITaura

GEORGE KOBAYASHI

MIN KOKAWA



AIKO KOKEN

ELSIE KOMURA

HITOSHI KORO



ASYIA KURO

JIMMIE T. KUMAMARU

FUMIKO KUME



FRED S. KURATA

RAYMOND KURIHARA

YOSHIO MATSUDA





LEFT • EMCEE AT
A SENIOR DANCE IS
CHARMING LILLIAN
UYEDA.



YORIKO MATSUEDA

YUTAKA MATSUMOTO

JOE MIKAMI



SHIBLEY MIKAWA

JUNE MITORI

YONEKO MIYAGI



TADASHI MIYAMOTO

SHIG MORI

MARJORIE MORIOKA



FRANK MORITA

FUMIKO MORODOMI

HARUMI MURAKAMI

YOSHIKO NAGAI



MANA NAGATA

SABURO NAKAMURA

YOSHIO NAKAMURA



FRANCES NAKASHIMA

HENRY NAKASHIMA

SEICHI NAKATSUKA



CHIEKO NARASAKI

FLORENCE NEMOTO

GRACE NISHIKAWA



KATSUMI NISHIKAWA

JULIA NITTA

RIGHT • THREE
BOOKWORMS ARE
CAUGHT AT THEIR
USUAL PASTIME.





JEAN NOGUCHI

MARY H. NOMA

GRACE OGATA



MIYOKO OKAZAKI

MISAO OKUMOTO

BENNY OKURA



TED TANAKA

ITSUKO OMOKAWA

ASAKO ONISHI



SHIGEO OSHIMA

EMIKO OSHITA

SATOSHI OUNE



LEFT • SENIOR STAG-
ETTES AWAIT THEIR
PARTNERS WITH MIXED
EMOTIONS.

RIGHT • WHAT'S THE
HURRY, SENIORS?



MIDORI OURA

FLOYD OUYE

MASATOSHI OYAMA



CHITOSHI RYUTO

MICHINOBU SAGA

ALICE SAGARA



FUSAYE SAGATA

TOM SAITO

SHIZUYE SAKAMOTO



JANE SAKATA

ATSUSHI SAKIOKA

HITOSHI SAKURAI





LEFT "WAKI" DE-
MONSTRATES HIS
TECHNIQUE.



MARGARET SAMESHIMA

HIROSHI SATO

MARY SATO



LARRY SHIMADA

UTSUKA SHIMADA

MARGARET SHIMIDZU



GARY SHIOTA

MINOKO SHIROISHI

SUSIE SHISHIDA



YOSHIMARU SUGIMOTO

JULIA SUZUKI

CHIYOOKO TAHARA

MINORU TAKAI



AIKO TAKAMUNE

SHIGEO TAKASUGI

MARY TAKAYAMA



KAYOKO TAKECHI

ARTHUR TAKEI

SUE TANABE



MICHI TANAKA

ROY TANAKA

TOSHIKO TANJI



SHIZUKO TOGO

ARTHUR TOIMOTO

RIGHT • WHAT GOES
ON?





LEFT. GRIEVANCES
OF BOYS AND GIRLS
WEEK ARE BURIED
AS THE HATCHET.



KEYOZE TOYOFUKU

ANN TSUJI

TERUO TSUJIMOTO



TOSHIKO TSUSHIMA

MARIKO TSUTSUI

GEORGE UJIHARA



HARUO UMEDA

LILLIAN UYEDA

MASARU UYEDA



TADASHI WAKAI

TERUKO WAKAI

EDDIE WAKIMOTO

YAEKO WATANABE



HELEN WILKINS

HIROSHI YAKUBA

SAKAYE YAMADA



FUTAMI YAMAGUCHI

YOSHIAKI YAMAMOTO

MIYAKO YOKOI



HIDEKO YOSHIDA

SETSUKO YUI

JEAN ZIEGLER



SUMIKO HARATANI

TOSHIKO IKE

• WITHOUT PICTURES •

JOE KOGA • GEORGE

OKUSU • HIFUMI TERA-

NISHI •

Junior Officers



HENRY OGA
president

MAS SHIBATA
vice-president

MIYAKO KOSAKA
secretary

KENJI KAJIYA
social chairman



Sophomore Officers



KAZUO SHIBATA
president

ROY NAKAZAWA
vice-president

GRACE SAGAWA
secretary

HATSUTO NAGAI
treasurer



12th grade

FRONT ROW • LEFT TO RIGHT • LETA KAWAJIRI • EDNA ITO •
KUMEKO AKIYAMA • NOBUKO HANZAWA • KAZUKO INOU-
YE • MISS LEFLAR, adviser • TOSHIO MAKINO • DON HISAKA • TO-
SHIO MATSUO • ROY KANEDA • SECOND ROW • KAZUE AKU-
TAGAWA • LOUISE GOMI • KAZUMI TAGASHIRO • MARGA-
RET KIKUCHI • RUBY HAMASAKA • MILDRED DOTE • SHIGEKO
TAGASHIRO • ALICE NAKAO • KONAMI FUJITA • TOSHIYUKI FUJI-
SHIGE • HENRY HIRATA •



12th grade

FRONT ROW • LEFT TO RIGHT • TOSHIMI TERAOKA • EMIKO TERADA •
NELLIE UTSUMI • ALICE OKAMURA • KIMI TAMURA • MASATO YA-
MAOKA • FRANK SHIMAZAKI • NOBUYUKI TANIMOTO • YUKIO SHI-
MIZU • BACK ROW • TAKEO SHIBATA • MASAYOSHI TANJI • YOSHIKO
TOMIYAMA • HIROKO YASUTAKE • YOSHIMI ANDO • EMIKO TAGU-
CHI • MISS COOPER adviser • YOSHIKO TOMINAGA • MARIAN YAMAMO-
TO • DOROTHY OGATA • TOSH MIYAMOTO • SAM MURAKI •



11th grade

FRONT ROW • LEFT TO RIGHT • SHIZUYE ICHIKI • ALICE HAGIWARA • EDWARD IWAMIYA • AMY IJICHI • MISS CAMPSTER, adviser • HARRY FUJIOKA • KENJI KAJIYA • MARY IGE • YOSHIE JINDA • SECOND ROW • TOM ITO • OSCAR KAMEMOTO • JANE ASAWA • MARY HARADA • AYAKO FUJIMOTO • MIYOKO ICHIKI • NAGAKO HORIGUCHI • MARIENNE IRIYE • KIYOKO HATASHITA • KYOKO FUJIYAMA • MAY KAMIBAYASHI • TOSHIO AKITA • STEPHEN DOHI • ROW THREE • JACK FUKUMOTO • ROLAND HAGIO • YUTAKA HIROMOTO • KIYOSHI HOJO • KIYOSHI FUJIMOTO • SHIG ITO • GEORGE HAYASHIDA • TETSUO HAYASHI • BILL IKEMOTO



11th grade

FRONT ROW • LEFT TO RIGHT • NORIKO NAKATANI • NAMIYE NAKATANI • FUMI-
 KO NAKANISHI • RUBY MATSUHIRO • YONEKO KIMURA • MISS JAMISON adviser
 MIYAKO KOSAKA • IKU NAKAO • KIYOKO KAMIDOI • TOMIKO NAKAMOTO • SECOND
 ROW • WALTER MATSUI • TOM KITAGAWA • SEIGO KOTAKE • HARUE NAGAO-
 KA • TOSHIKO NAKANO • SHIZUKO NAKAOKA • SACHIKO MORIKAWA • EMIKO NA-
 GAI • CHIYOKO KANEKAE • MASAO KINOSHITA • LINDY KUSUMOTO • THIRD ROW
 SHIGEO MITANI • BOB IGE • JACK KIMOTO • HENRY MORI • HENRY NISHIKAWA •
 GEORGE NAKAO • YOSHIO KAMITA • AKIRA NAKAGAWA • SHIGEMI KAWAMOTO
 BILLY KINOSHITA • TOMIO MURANAKA



11th grade

FRONT ROW • LEFT TO RIGHT • NATSUYE OKAZAKI • HANNAH NISHIMOTO • BESSIE NISHIMOTO • TOSHIO IKE • MISAO SHIOZAKI • MRS. PRICE *adviser* • MASARU SHIBATA • YUTAKA SHIRAIISHI • TERUKO OTSUBO • SECOND ROW • JANE OKAZAKI • TOKIKO OTANI • DOROTHY NISHIMA • HOSHIKO OTOSHI • EVELYN SHIMIZU • HATSUMI SAKURAI • FUMI OKINO • JEAN OKUNO • SALLY OSHIMA • CHISATO OKAYAMA • WILLIAM SHIMAMOTO • ART OKUGU • THIRD ROW • FRANK SHINODA • FRED SATO • TOKUO NITTA • SHIG SATO • FRANK SATO • SHU OZAWA • HENRY OGA • TOM SAKODA • JUNJI SASAKI • HENRY SAKAKURA • GEORGE SAKAMOTO •



11th grade

FRONT ROW • LEFT TO RIGHT • MIE YAMAMOTO • SHIZUKO YAMAGUCHI •
 HIDEKO UMINO • SMOKIE SUGII • MISS SIMPSON adviser • TAK YAKUBA •
 TOSHIO TAKAHASHI • RITSUO YAMANAKA • JOE TODA • SECOND ROW •
 MAYE TANABE • BERNICE YAMAGUCHI • YUIKO YAGUCHI • AMY TSU-
 TSUMI • YUKA TODA • TERUMI TAMURA • MIZUYE YAMADA •
 MARY YOSHIDA • HISAKO TANJI • SHOJI TABUCHI • THIRD ROW •
 KEIZE TOYOFUKU • TAKESHI TAHARA • MASAIKI YOSHIKAZAKI • JIM
 TANAKA • GEORGE SUGIMOTO • TOMU YAMASAKI • YUKIIMA-
 RU SUGIMOTO • JOHN YAKAHI • CHOJI SUGITA • MAS WATA-
 NABE • HARUTO TAKATA •



11th grade

FRONT ROW LEFT TO RIGHT • RUBY MASUOKA • EDITH ANN
GRISWALD • CHRISTIE OGAWA • JANE KAWANA • MISS JACKSON advisor
CAROLYN SUZUKI • NANCY TOYAMA • TERRY MAYEMURA • YASUKO
HONDA • AKIKO YANOKAWA • SECOND ROW • TOMIYE ISHII • JACK
AIKAWA • GEORGE FUJII • ROY OSHIMA • TATSUO IWAHASHI •
FREDERICK MAYEDA • JACK NAKASHIMA • CASEY SAKATA • HIROSHI
KIKAWA • THIRD ROW • HIROSHI IGE • TAD TAKAHASHI • JIM
OTO • GEORGE TAKAHASHI • CLARENCE TANAKA • GEORGE
YANAGIDATE • TAKASHI TOKUNAGA • JIMMY YAMAMOTO •
YOSHIKAZU SAKAKUBA • KENJI TAKETANI •



10th grade

FRONT ROW • LEFT TO RIGHT • KIKUO HAYASHI • ANDREW KAMBARA • KOJI KAMBARA • BILL ASAWA • MRS. BEASLEY adviser • FUJIKO KIKUCHI • FRANCES KAWAJIRI • MICHIKO FUJII CHARLOTTE HAMADA • YUKO HANZAWA • SECOND ROW • JEAN HATTORI • SHIGEKO HARGIO • ALICE IKEGAMI • AGNES AWAYA • GRACE HATTORI • YOSHINO KAWAGUCHI • TAZUKO KAWAHATA • HARUYE FUKUMOTO • MARY FURUKAWA • SADAKO IGE • THIRD ROW • YOSHIO KAWAHATA • HIRO ISHIDA • TED KAKITA • RICHARD KITANO • BEN KAWAHATA • ISAMU KAYANO • TOM HORITA • MITSU FUJISHIMA • JIM IGUCHI



10th grade

FRONT ROW • LEFT TO RIGHT • MASASHI KORO • ISAMU MORI • JACK
 KUNITSUGU • ROY NAKAZAWA • MR. COOK adviser • MICHIKO MIYAKE • YURI
 MOMONOI • ISHII MITORI • SHIZUKO MIURA • ELSIE MURAOKA •
 SECOND ROW • MARY MIKAWA • YURIKO NAKAMICHI • GRACE KUWA-
 BARA • SUMI MATSUI • SUMIYE NERIO • TERUKO MIKAMI •
 MITSUYE MURASAKI • YASUKO NAKAGAWA • MISAHO NAKATSURU •
 THIRD ROW • DEEN MATSUZAWA • TATSUO MATSUMOTO • CHOJI MA-
 TSUSHITA • TATSUO MORI • GEORGE MIYAGI • KENNY MATAYOSHI •
 JIM MATSUMOTO • KEN NISHIKAWA • HATSUTO NAGAI.



10th grade

FRONT ROW LEFT TO RIGHT • TERUKO SAGA • CLARA SUGINO • KAZUO SHIBATA • GRACE SHIRAIISHI • TED SAIKI • MRS. M. GUBLO, adviser • GRACE SAGARA • MARIE OTA • KEIKO OGAWA • SECOND ROW • FRANK SASAKI • YOSHIYE SHIMIZU • KAZUKO OTO • JANET SATO • BETTY SHIMIZU • HARUE SAGARA • TSUGI OZAKI • MICHIKO SHIROISHI • FRANCES OKAMURA • KINU OZAKI • ESAKO SHIMADA • SHIZUKO SHODA • BERTHA SAKAMOTO • THIRD ROW • ITSUMU RYUTO • BOB SAKAUYE • WILLIAM SHISHIDA • FUJIO OKIMOTO • GEORGE OKUBO • TOM OKUMOTO • JAMES OYE • KIYOSHI OSHITA • BERT SATO • TERUO NOMURA • WALTER SANO • FRED OSHIMA •



10th grade

FRONT ROW • LEFT TO RIGHT • ALICE TAKAMUNE • HELEN TASHIRO •
 MARIKO TSUJI • MAKIKO TOGO • HARUYE TSUSAKA • MRS. HOWELL adviser •
 JOAN ZEIGLER • TERUKO YOKOI • YUKIKO TAMURA • HIDEKO
 TSUSAKI • KAY YANAGI • SECOND ROW • HARUO YAKUSHIJI • KENJI
 WATANABE • MITSUO WATANABE • MINORU TAGUCHI • HIRO TASHIRO • KIYOKO
 WATANABE • MOMOMO WATANABE • MARY TANAKA • KUNIYE YOKOYAMA • LILLIAN
 YAMASHITA • RUBY YASUHIRO • CHARLIE YAMADA • GEORGE TOMOTA • THIRD ROW •
 JAMES YONESAWA • KAZUO YOSHIDA • JOE YOSHIKAWA • RAY TAMAKI • KA-
 TSUMI TAKAI • SAM TANAKA • SHOJO WATANABE • KAZUYUKI TAKE-
 DA • ROY YAMADA • RICHARD YUKI • UTAKA WADA.



our ORGANIZATIONS

Student W 44....



UNDER THE EAGLE EYE OF PRESIDENT HOSEN OSHITA, THE LAWMAKERS OF BOWEN HIGH CONVENED EVERY TUESDAY TO DISCUSS VARIOUS CAMPUS PROBLEMS. PROVISIONS FOR THE LUSH GREEN SCHOOL LAWN, THE HANDY PORCH-ROOFS, TWO AMENDMENTS TO THE CONSTITUTION, AND THE SUGGESTION FOR THE ANNUAL WERE THE OUTSTANDING ACHIEVEMENTS OF THE WINTER COUNCIL.

GRADABLE SATOSHI OISHI WAS THE VICE-PRESIDENT; GRACE OGATA AS SECRETARY; MAS KENMOTSU AS TREASURER.



Council

S 44....

BUCK SAKURAI POUNDED THE GAVEL MORE THAN ONCE IN EFFORTS TO SUBDUCE THE EXCESSIVE SPIRIT OF FREE SPEECH EVIDENCED AT EVERY MEETING. ALONG WITH DISCUSSING ALL MAJOR AND MINOR QUESTIONS CONFRONTING THE STUDENT BODY, THE COUNCIL PUBLISHED THE RELOCATION HANDBOOK AND HELD A CLEAN-UP CAMPAIGN IN CO-OPERATION WITH OTHER ORGANIZATIONS.



OTHER FAMED ROHWERITES OF THE STUDENT PERSONNEL WERE: TOSHIO MAKINO, VICE-PRESIDENT; YAEKO WATANABE, SECRETARY; GEORGE KOBAYASHI, TREASURER.





SHINYA HONDA editor

Resumé

WITH CAMERA MEN WITHOUT FILMS, THE ANNUAL FUND WITHOUT MONEY, THE STAFF, UNDER THE EDITORSHIP OF SHINYA HONDA, FACED MANY OBSTACLES WITH DETERMINED EFFORTS TO TURN OUT A TOP YEAR-BOOK OR "BUST". SPIRIT AND COOPERATION BECAME THE KEY WORDS DURING THE FINAL HURRIED WEEKS OF PRODUCTION.





TOP ROW • LEFT TO RIGHT • MISS SIMPSON, ADVISER; JO-
 JI KITAKA, MANAGING EDITOR; GRACE OGATA, BUSI-
 NESS MANAGER; MAS KENMOTSU, ASSISTANT BUSINESS
 MANAGER; FUSAYE SAGATA, ADVERTISING MANAGER;
 KIMI FUJITA, FEATURE EDITOR; MIDORI OUBA, CLUB
 EDITOR; SECOND ROW • MAS KINOSHITA, ART EDITOR;
 SATOSHI OISHI, ART EDITOR; ART TAKEI, STAFF
 ARTIST; NELLIE UTSUMI, STAFF ARTIST; HIRO TA-
 SHIRO, STAFF ARTIST; HOSEN OSHITA, SPORTS EDITOR;
 ASAKO HORIMOTO, GIRLS' SPORTS EDITOR; SUD YA-
 KUBA, PRODUCTION MANAGER; KAYO TAKECHI, CIRCU-
 LATION MANAGER; YAS MIYAO, SENIOR CLASS EDITOR;
 MICHINOBU SAGA, SENIOR CLASS EDITOR; YOSHIKO TO-
 MIYAMA, JUNIOR CLASS EDITOR; SHIZUKO SHODA, SOPHO-
 MORE CLASS EDITOR; KIYOKO WATANABE, BOOSTER
 EDITOR.

Hi-Lites

LEDED BY VALIANT, FINGER-HIGHGRACE OGATA, THE HI-LITES STAFF RUSHED MADLY ABOUT WITH UNFLAGGING ENERGY TO GATHER NEWS, "DIRT," AND GOSSIP. AFTER THE PAPER BECAME A PART OF THE INTERNATIONAL QUILL AND SCROLL AND ALSO A MEMBER OF THE ARKANSAS HIGH SCHOOLS' NEWSPAPER ASSOCIATION, TYPEWRITERS WERE POUNDED WITH EAGER AMBITION TO MAKE EVERY EDITION A FOUR-SHAB SHEET.



GRACE OGATA editor





TOP • LEFT TO RIGHT • RUTH KAMBARA, ASSOCIATE EDITOR; SAM WAKAI, ASSOCIATE EDITOR, NEWS EDITOR; SATOSHI OISHI, BUSINESS MANAGER; SHINYA HONDA, SPORTS EDITOR, BUSINESS MANAGER • BOTTOM • MAY YABUMOTO, NEWS EDITOR; KAYO TAKECHI, FEATURE EDITOR; HOSHEN OSHITA, SPORTS EDITOR; GEORGE KOBAYASHI, SPORTS EDITOR.



TOP • ART TAKEI, ART EDITOR; ASAKO HOSHIMOTO, TYPIST; MARION YAMAMOTO, TYPIST; TOSHIO MAKINO, TECHNICIAN; YUTAKA SHIRAIKI, TECHNICIAN; MRS. RAMSDALL, ADVISER



Hi-Lites

LEDED BY VALIANT, FINGER-HIGH GRACE OGATA, THE HI-LITES STAFF RUSHED MADLY ABOUT WITH UNFLAGGING ENERGY TO GATHER NEWS, "DIRT," AND GOSSIP. AFTER THE PAPER BECAME A PART OF THE INTERNATIONAL QUILL AND SCROLL AND ALSO A MEMBER OF THE ARKANSAS HIGH SCHOOLS' NEWSPAPER ASSOCIATION, TYPEWRITERS WERE POUNDED WITH EAGER AMBITION TO MAKE EVERY EDITION A FOUR-STAR SHEET.



GRACE OGATA editor





TOP • LEFT TO RIGHT • RUTH KAMBARA, ASSOCIATE EDITOR; SAM WAKAI, ASSOCIATE EDITOR, NEWS EDITOR; SATOSHI OISHI, BUSINESS MANAGER; SHINYA HONDA, SPORTS EDITOR, BUSINESS MANAGER • BOTTOM • MAY YABUMOTO, NEWS EDITOR; KAYO TAKECHI, FEATURE EDITOR; HOSEN OSHITA, SPORTS EDITOR; GEORGE KOBAYASHI, SPORTS EDITOR.



TOP • ART TAKEI, ART EDITOR; ASAKO HORIMOTO, TYPIST; MARION YAMAMOTO, TYPIST; TOSHIO MAKINO, TECHNICIAN; YUTAKA SHIRAIISHI, TECHNICIAN; MRS. RAMSDALL, ADVISER





Girls' League



ORGANIZED SUCCESSFULLY LAST WINTER UNDER THE SPONSORSHIP OF MISS AMIS AND THE LEADERSHIP OF RUTH KAMBARA, THE GIRLS' LEAGUE BECAME EXTREMELY ACTIVE WITH THE PRESENTATION OF A SADIE HAWKINS PLAY, AN AFTER SCHOOL DANCE, MONTHLY PRACTICE DANCES, A PREVIEW OF FASHIONS, AND A GENERAL UPLIFT IN SCHOOL SPIRIT, COOPERATION, AND ENVIRONMENT. LILLIAN UYEDA LED THE GIRLS DURING THE SUMMER TERM.



LEFT - TOP TO BOTTOM - POPULAR CAMPUS FASHIONS - ALL GIRLS LEARN TO DANCE AND JITTERBUG - ACTIVE CABINET OFFICERS PLAN ACTIVITIES - BOTTOM - CABINET AND HOMEROOM REPRESENTATIVES.





THOSE BRAIN TRUSTS THAT DO THE TOP-NOTCH PERCOLATING IN CLASSROOMS AND IN LEADING SCHOOL AFFAIRS TOOK TIME OUT FROM SCHOOL BOOKS TO HOLD A COUPLE OF SUMPTUOUS PARTIES, A DELIGHTFUL AFTERNOON TEA, FORMAL INITIATIONS, AND TO TOP IT OFF A LARGE-SCALE BOND-DRIVE THAT NETTED ELEVEN JEEPS FOR THE SCHOOL.

Quill and Scroll

THE JOURNALISM "GREATS" ON THE CAMPUS INAUGURATED THE QUILL AND SCROLL, AN INTERNATIONAL HONORARY JOURNALISM SOCIETY, WITH EIGHT CHARTER MEMBERS. EACH OF THESE INVALUABLE WRITERS RECEIVED A PIN FROM THE ORGANIZATION HEADQUARTERS. MRS. RAMSDELL IS THE SPONSOR.



Knights



BESIDES SPONSORING THE NOW TRADITIONAL ANNUAL CO-ED QUEEN CONTEST, THESE FELLOWS HEADED INNUMERABLE DANCES AND PARTIES SUCH AS THE BASKET DANCE, MISS CO-ED'S BALL AND OTHER ROMANTIC AFFAIRS. THIS POPULAR CLUB WAS LED BY EUGENE SAKASEGAWA DURING THE WINTER AND RAYMOND KUBIHARA DURING THIS SUMMER.

Top Hatters

AS THEY STRAIGHTENED THEIR MAKE-BELIEVE NECKTIES AND TIPPED THEIR IMAGINARY TOP-HATS, THESE GENTLEMEN SPENT THEIR TIME DISCUSSING ETIQUETTE. NOW KNOWN AS THE "BASKETBALL CLUB," THEY WERE LED BY SHIG SATO AND SAT OUNE. HANK HAYASHINO ADVISED THEM.



Hi-4



UNDER THE LEADERSHIP OF MAS SHIBATA AND ROBERT NAKAMURA, THESE ENERGETIC FELLOWS COOPERATED WITH THE CENTER C.A., CONTRIBUTED TO GENERAL SCHOOL IMPROVEMENT, PRESENTED A FLAG POLE TO THE SCHOOL, AND HELD PARTIES AND TAMALES SALES. VIC MATSUI AND HANK HAYASHINO WERE THEIR SPONSORS.

Jci-4

FIRST ORGANIZED UNDER MARGARET SHIMIDZU LAST WINTER, NOT ONLY HAVE THESE PLEASURE-SEEKING CO-EDS BEEN ACTIVELY ENGAGED IN MANY SCHOOL SOCIALS, BUT HAVE ALSO ROLLED BANDAGES FOR THE RED CROSS. SPONSORED BY MISS OGA AND MISS TOYOTA, THE GIRLS HAVE CHOSEN KAYOKO TAKECHI TO LEAD THEM THROUGH THE SUMMER SEMESTER.



Press



THE PRESENTATION OF A PLAY DEPICTING THE DAILY STRUGGLES OF THE NEWSPAPER STAFF BEFORE GOING TO PRESS WAS THE BRIGHTEST SPOT IN THE DOINGS OF THE PRESS CLUB. WITH MRS. RAMSDALE AS SPONSOR, THE CLUB WAS HEADED BY SATOSHI OISHI AND SHINYA HONDA DURING THE TWO SEMESTERS.

Spanish

SPEAKING WHAT IT CALLS "EL ESPANOL," THE SPANISH CLUB HAS FIRMLY ESTABLISHED ITSELF WITH ITS MANY ACTIVITIES SUCH AS A GAY CHRISTMAS PARTY IN THE TRUE LATIN-AMERICAN STYLE, INNUMERABLE GAMES, PROGRAMS, AND STUDIES OF SPANISH-SPEAKING COUNTRIES. TAKASHI YAKURA HEADED THE CLUB SPONSORED BY MRS. GUBLO.



Handicraft



PLUMP, STUFFED TOYS, DELICATE CROCHET WORK, WARM KNITTED THINGS, AND PERFECTLY STITCHED CLOTHING WERE MADE BY THESE INDUSTRIOUS MEMBERS UNDER THE LEADERSHIP OF MARY FUKUCHI AND ALICE OKAMURA. MISS SEKI WAS THEIR FIRST SPONSOR; LATER, MISS KUBO ADVISED THEM.

Needlecraft

NEEDLEWORK OF ALL KINDS — KNITTED SWEATERS, CROCHETED THINGS, EMBROIDERY — ENGAGED THE BUSY HANDS OF THIS GROUP. MARGARET KIKUCHI AND LILLIAN HANANOCHI LED THE GIRLS.



Library



COUNTLESS NUMBERS OF MAGAZINES AND BOOKS INTERESTED THESE BOOK-WORMS WHO GATHERED EVERY FRIDAY MORNING IN THE SCHOOL LIBRARY UNDER THE SUPERVISION OF MISS COOPER.

Current Events

THESE BEWILDERED MEMBERS HAD A TERRIBLE TIME TRYING TO KEEP UP WITH A CONSTANTLY CHANGING WORLD. IN DISCUSSIONS, REPORTS FROM MAGAZINES AND OTHER SOURCES, PRESIDENTS YAS MIYAO AND NAGAO HAMADA LED THEM IN THEIR PURSUIT AFTER A KNOWLEDGE OF THE CURRENT WORLD UNDER THE SPONSORSHIP OF MISS JACKSON.



Party Planning



PREPARING TO BECOME FIRST-RATE HOSTESSES, THESE GIRLS HAD HILARIOUS TIMES PLANNING AND GIVING PARTIES WITH GAMES AND REFRESHMENTS. WIDE IJIN AND MARY SATO PRESIDED WITH MISS TOMIOKA AS THEIR ADVISER.

Know Yourself

TURNING OUT HIGHLY POLISHED, WELL-MANNERED, AND BEAUTIFULLY GROOMED PERSONALITIES, THE CLUB TRAINED ITS MEMBERS THROUGH SPEAKERS, ORIGINAL PLAYS AND PARTIES, AND HALF-A-DOZEN SOCIALS. LITTLE FUJIKO KIKUCHI PRESIDED WITH MRS. HOWELL AS THEIR ADVISER.



Photography

THE DARKROOM IN 8F ATTRACTED THESE CAMERA-FRIENDS FOR A LEGITIMATE REASON - TO DEVELOP NUMEROUS PICTURES WHICH THEY THEMSELVES SNAPPED.



Electronics



SURROUNDED BY AN ATMOSPHERE OF DEEP MYSTERY, THIS CLUB LED BY ATSUSHI FUJI, CONDUCTED DEMONSTRATIONS OF ELECTRICAL MAGIC.

Art

THE ARTISTICALLY INCLINED JOYFULLY PLASTERED THE ART ROOM WALLS AND TABLES - AND THEMSELVES - WITH PAINT IN ATTEMPTS TO PRODUCE MASTERPIECES.



Typing

THE NIMBLE-FINGERED STUDENTS PUNCHED AWAY INDUSTRIOUSLY ON THE LONG-SUFFERING TYPEWRITER KEYS TO SPEED UP THEIR ALREADY SWIFT RATES.



Glee

ASPIRING TO THE HEIGHTS OF THE ALL-STAR GIRL ORCHESTRA, THE BOHEMIA NIGHTINGALES DEFTLY SANG ON MANY OCCASIONS.



Classical



THESE "HIGHBROWS" NOT ONLY ENJOYED SUPERB PIECES OF CLASSICAL MUSIC BUT ALSO SPONSORED A "PENNY PITCHING" BOOTH IN THE CARNIVAL.

Reading

DELVING INTO THE MYSTERIES OF THE PRINTED PAGE, THESE INTELLECTUALS WERE LED BY HIROSHI IGE IN THE SUMMER TERM AND SPONSORED BY MISS BANKS.



Sophomore



LED BY ROY NAKAZAWA, THESE ACTIVE MEMBERS GAVE A FAREWELL SOCIAL FOR THE TULE BOUND, AND ENGAGED IN OTHER ACTIVITIES.

Model Airplane

THE FUTURE BUILDERS OF ULTRA-MODERN AIRSHIPS SPENT MANY HOURS CONSTRUCTING MODELS. THESE DESIGNERS WERE LED BY MITSUO WATANABE.



Horseshoe



THE HORSESHOE PITCHING MEMBERS OF THIS NEW CLUB, PRESIDED OVER BY TAD WAKAI AND ADVISED BY MR. RAMSDELL, WAGED HOT CONTESTS AMONG THEMSELVES.

B.U.G.s

KNOWN OFFICIALLY AS B.U.G.S, THE SOPHOMORE GIRLS PARTICIPATED IN MANY ACTIVITIES WITH GRACE SAGARA AS THEIR PRESIDENT.



Office

RUNNING AND WORKING THEMSELVES RAGGED FOR THE BENEFIT OF THE STUDENTS, THE OFFICE ASSISTANTS PROVED INVALUABLE IN ATTENDANCE CHECKUP.





Chorus

UNDER THE THEME OF "APPRECIATION THROUGH PARTICIPATION," THE MEMBERS OF THIS GROUP HAVE BEEN STUDYING AMERICAN MUSIC. THEY HAVE SUNG FOR THE BENEFIT OF THE WHOLE CENTER ON VARIOUS OCCASIONS AND HAVE JOURNEYED TO MCGHEE TO ENTERTAIN THE GARDEN CLUB.



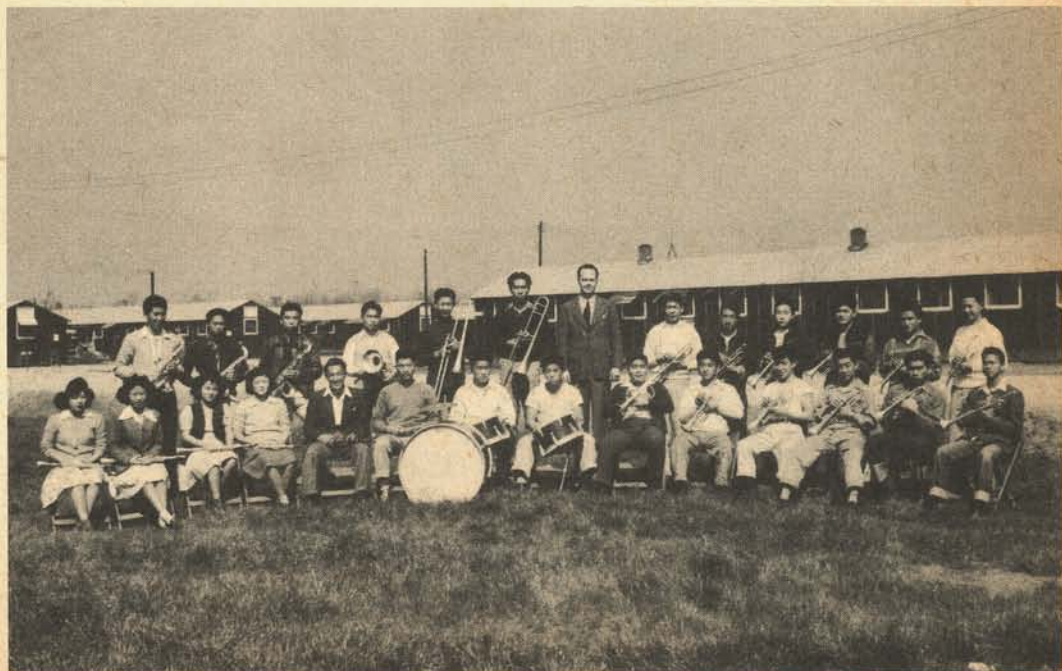
DIRECTED BY MRS. PRICE, THESE POLISHED SINGERS HAVE BEEN PERFORMING AT COMMENCEMENTS AND BACCALAUREATE SERVICES, AT JUNIOR AND SENIOR HI ASSEMBLIES, FOR P.T.A. MEETINGS, AND ELSEWHERE. THEY STUDY PRINCIPALLY FOLK SONGS AND OLD MASTERS' MUSIC.

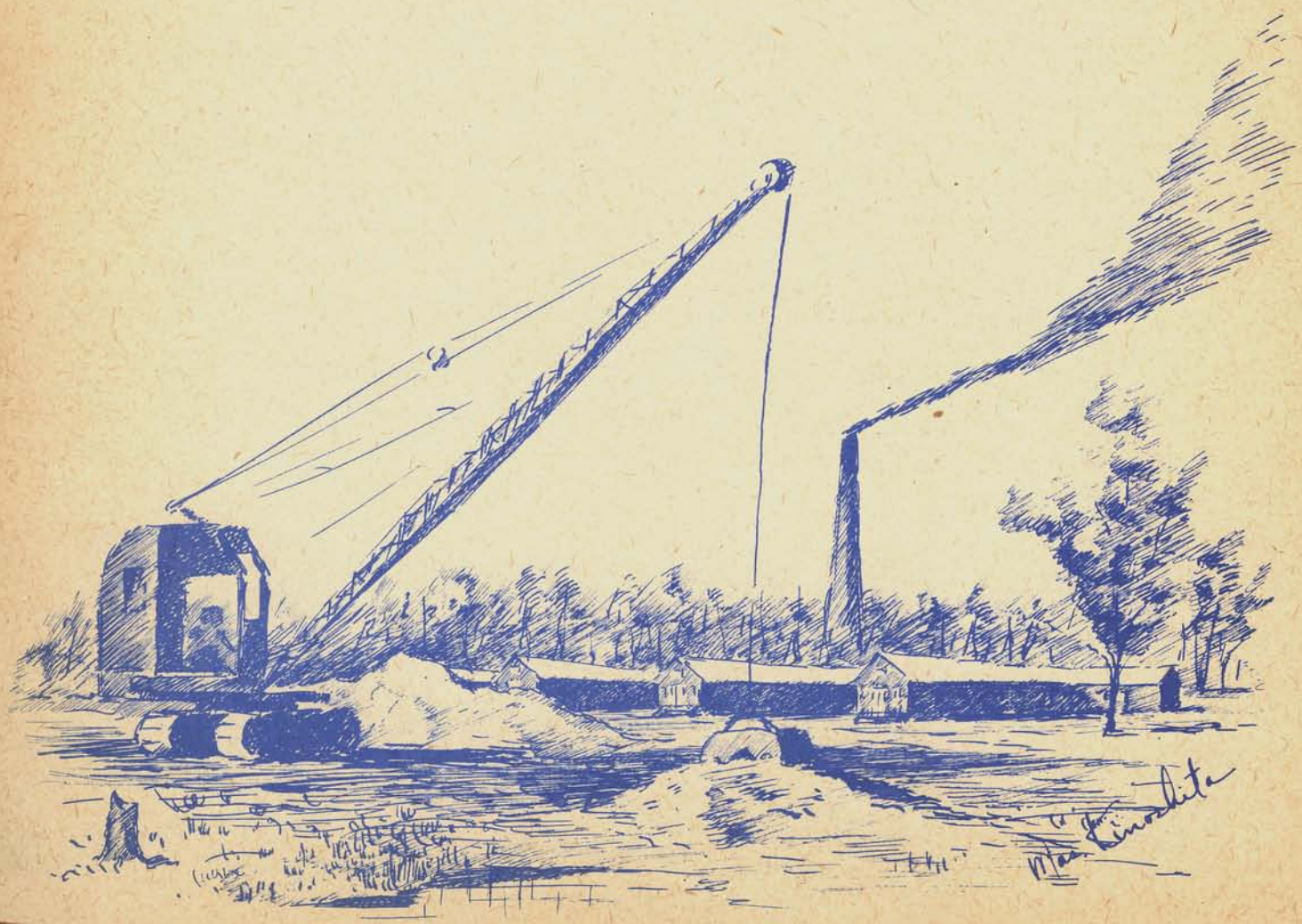
Music Makers



DURING MR. COLE'S FAMOUS SEVENTH PERIOD, THE "MUSIC-MASTERS" DILIGENTLY PRACTICED POPULAR SONGS. VOCALIST ROSIE KUSAMA AND JEAN ZIEGLER AND TROMBONE SOLOIST TOSHIO MATSUO ADDED ZEST TO THE DANCE ORCHESTRA THAT PLAYED AT U.S.O., SCHOOL, AND BLOCK DANCES, IN THE ASSEMBLY PROGRAMS, AND AT SENIOR PROMS.

MR. COLE'S BAND TURNED OUT BEAUTIFUL RHYTHM AT JUNIOR AND SENIOR HIGH SCHOOL ASSEMBLIES, AT OUTDOOR CONCERTS, AND ELSEWHERE.





Max Lindeite

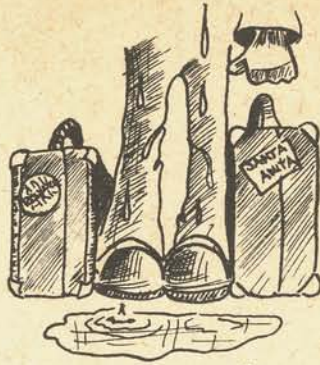
our ACTIVITIES

Sept. 20, 1943



1st edition of HI-LITES

Oct. 4, 1943



Segregation

Oct. 18, 1943



1st Amendment passed

Nov. 2, 1943



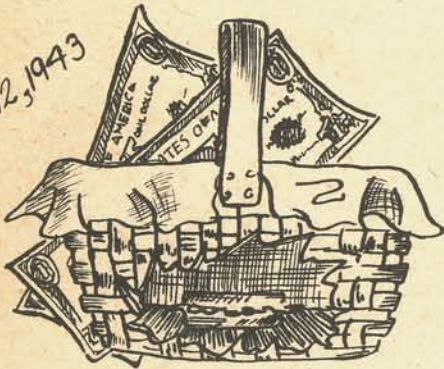
Senior 'B' Play

Nov. 4, 1943



"Gadie Hawkins Day" Assembly

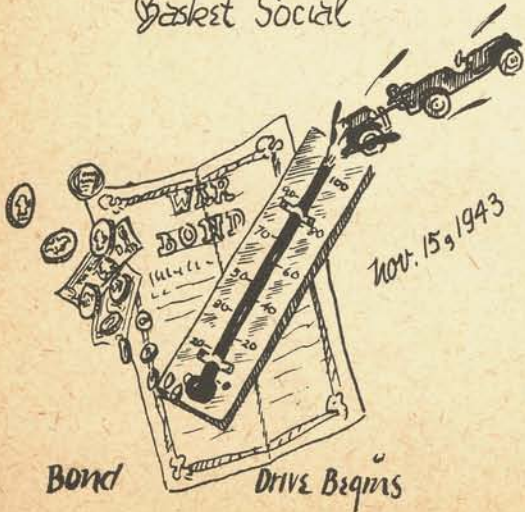
Nov. 12, 1943



Basket Social

Home

Nov. 15, 1943



Bond

Drive Begins

Dec. 19, 1943



Girls League Officers Elected

Dec. 22, 1943

Jan. 9, 1944



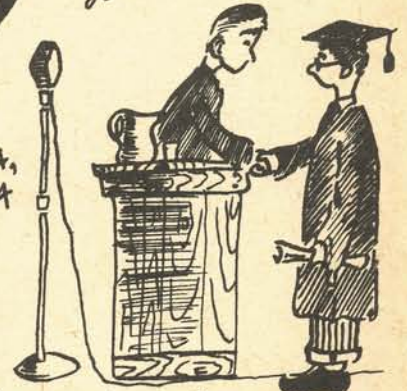
Campus Co-ed Crowned



Senior Prom

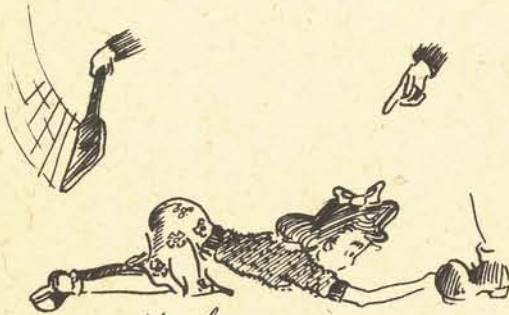
What?

Jan. 14, 1944



Graduation Exercises

Feb. 7 - Feb. 14, 1944



Boys Week



Girls Week

Feb. 28, 1944



Tamale Sale

April 15, 1944 - Carnival



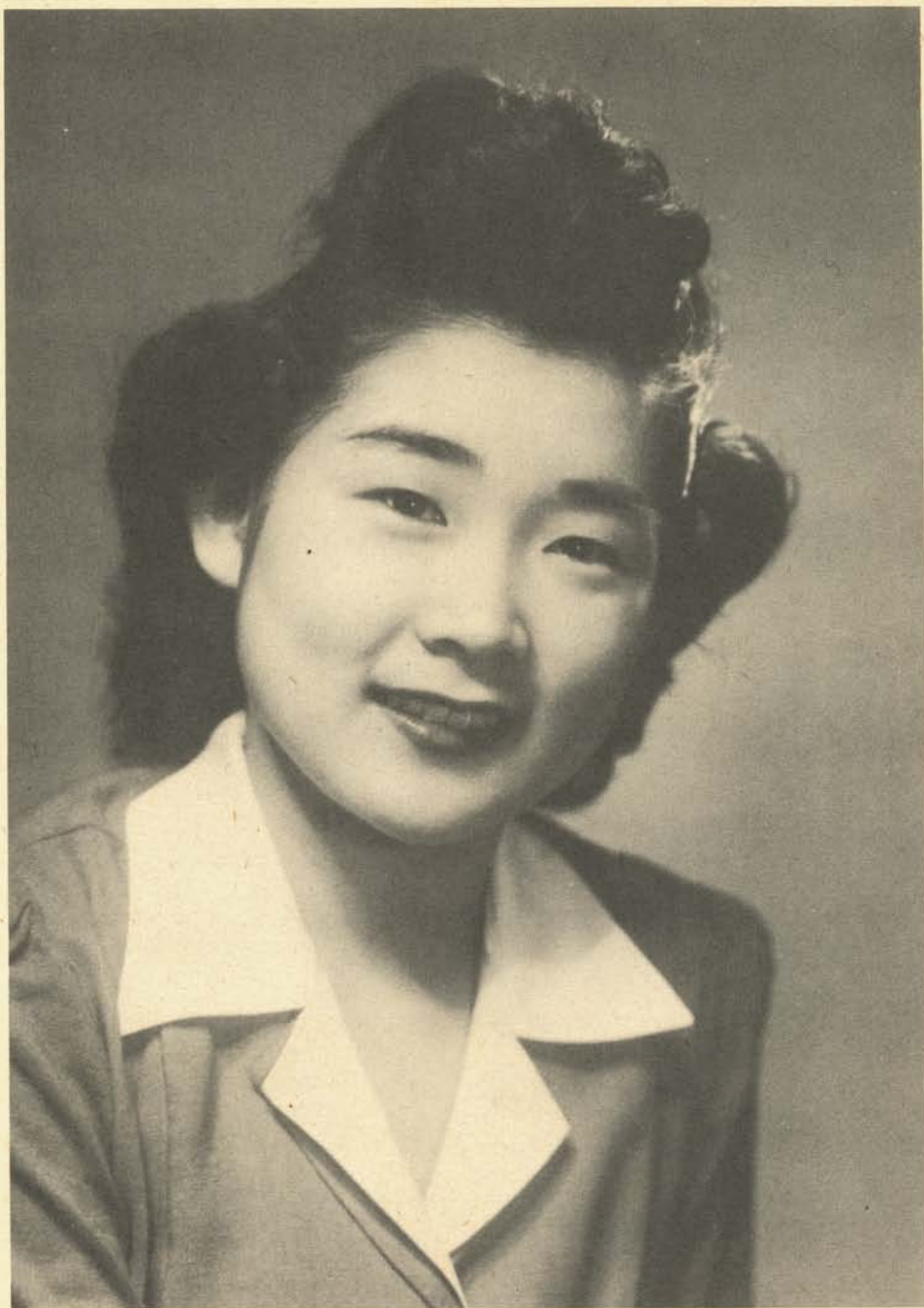
Raffle Drawing

T.M.P.



SPONSORED BY THE KNIGHTS, RUTH KAMBARA WAS CROWNED "MISS CAMPUS COED OF 1944" IN AN IMPRESSIVE CEREMONY AS PART OF A SPECIAL ASSEMBLY ON DECEMBER 22, 1943. MARION YAMAMOTO, LAST YEAR'S QUEEN, GRACIOUSLY CROWNED HER SUCCESSOR BEFORE THE ADMIRING EYES OF THE STUDENT BODY. HER CHARMING ATTENDANTS WERE LILYAN HANANOCHI AND LILLIAN UYEDA.





Ruth Kambata

MISS CAMPUS CO-ED



Lilyan Hananouchi

ATTENDANT

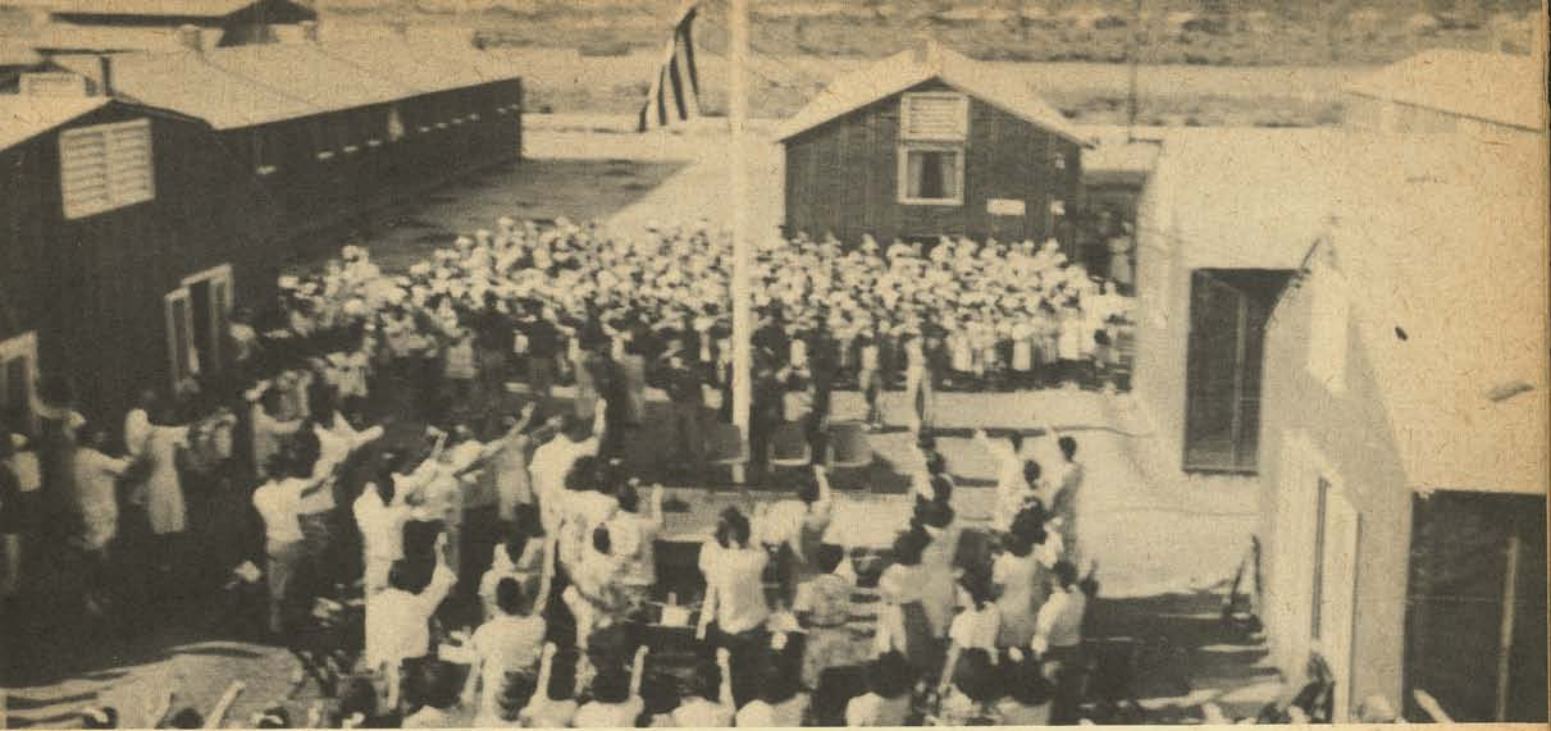


Lillian Uyeda
ATTENDANT











Mas. Kinoscheta

our ATHLETICS



ENDO CO-CAPTAIN



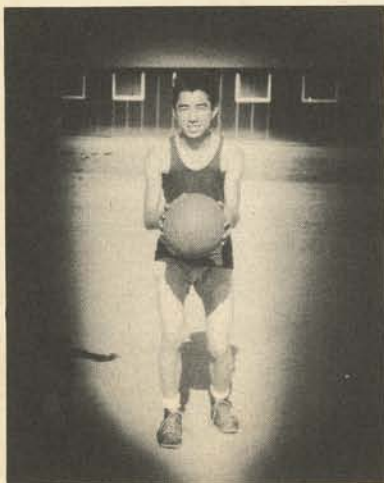
OGA CO-CAPTAIN

Varsity Basketball

UNDER THE COACHING OF VIC MATSUI AND HANK HAYASHINO, THE BOKWER VARSITY WAS MOLDED INTO A TOP-NOTCH TEAM. DESPITE COLD AND RAINY WEATHER, THE FELLOWS PRACTICED, AND POLISHED PLAYS INTO PERFECTION.

IN THEIR INITIAL ENCOUNTER, THE LOCAL CAGERS, LED BY TADA ENDO, EASILY DEFEATED THE HEAVILY FAVORED DENSON TIGERS TO THE TUNE OF 30-20. ALSO PLAYING A BANGUP GAME WERE HANK OGA, MASA SHIBATA, AND KEN IGE.

UNPREDICTABLE ARKANSAS WEATHER POSTPONED THE SECOND ENCOUNTER.



SHIBATA



HISAKA



IGE



ISHII



KAKITA



IKE



KAJIMOTO



YONEMURA



SHIMADA



MATSUI COACH



HAYASHINO COACH

Action!





FRANK SATO
 YOSHIMARU SUBIMOTO
 YUTAKA SHIRAIISHI
 EDDIE WAKIMOTO
 LARRY SHIMADA
 TADA ENDO
 FRED KURATA
 BUCK SAKURAI
 SATOSHI DUNE
 JUNJI SASAKI
 JOE SAKASEGAWA

Football

ALL ★ STARS

Basketball

TADA ENDO
 HANK OGA
 MAS SHIBATA
 TOSH IKE
 SHO KAJIMOTO



12 A-4s



FLOYD OUYE
CHITOSHI RYUTO
YOSHIMARU SUGIMOTO
GARY SHIOTA
LARRY SHIMADA
MICHINOBU SAGA
FRANK MORITA
FRANK SAKIOKA
HIROSHI SATO
MIN TAKAI
BUCK SAKURAI
SATOSHI OUNE
TOM SAITO
BENNY OKURA

FOOTBALL CO-CHAMPS

11 A-3s

HENRY OGA
TOKUO NITTA
FRANK SATO
YUTAKA SHIRAISHI
FRED SATO
TOSH IKE
MASARU SHIBATA
SHIG OHATA
TOM SAKODA
JUNJI SASAKI
SHIG SATO



BASKETBALL CHAMPS



HANK OGA
SHIG SATO
SHIG OHATA
TOSH IKE
FRED SATO
TOM SAKODA
YUTAKA SHIRAIISHI
MAS SHIBATA



11 A-3 &



G.A.A.

UNDER THE GUIDANCE OF MISSES SHIZUKA EYA AND MARIE MITSUDA, THE GIRLS' ATHLETIC ASSOCIATION HAS ENDEAVORED TO TEACH ITS MEMBERS GOOD LEADERSHIP AND SPORTSMANSHIP.

THE EFFICIENCY OF THE G. A. A. THIS YEAR WAS DUE TO THE INITIATIVE OF THE LEADERS.



ADVISERS



FRONT ROW • LEFT TO RIGHT • RUBY MATSUHITO • YONEKO MIYAGI • SUSIE SHISHIDA • HIMI HASHIMOTO • DOROTHY NISHIMA • MISAHO NAKATSURU • GRACE SAGARA • VIOLA NAKAMURA
SECOND ROW • HELEN TASHIRO • MIYO KITAURA • ASAKO ONISHI • KIYOKO WATANABE • MARY TANAKA • YOSHIYE SHIMIZU • CLARA SUGINO
THIRD ROW • ASAKO IKE • KAZUKO OTO • BETTY SHIMIZU • FRANCES KAWAJIRI • ASAKO HOBIMOTO • MARY MIKAWA • YUKO HANZAWA • MICHIKO SHIROISHI •

G. A. A.

THE CABINET WAS ABLY MANAGED BY PRESIDENT HIMI HASHIMOTO, WHO WAS ASSISTED BY VICE-PRESIDENT KAZUMI ARATA, SECRETARY FUSAYE SAGATA, TREASURER MASAKO HIRAMOTO, AND SPORTS MANAGER ITSUKO OMOKAWA.



G. A. A. CABINET



FRONT ROW • LEFT TO RIGHT • YOSHIKO HANZAWA • MIE YAMAMOTO • HIDE UMINO • HIROKO KAMIYAMA • KAZUMI ARATA • ITSUKO OMOKAWA • ALICE NAKAO • MAYE TANABE • SECOND ROW • FUSAYE SAGATA • ALICE HAGIWARA • IKUKO NAKAO • MARGARET SHIMIDZU • MARY HARADA • SHIZUKO YAMAGUCHI • MARIKO TSUTSUI • KEIKO OGAWA • THIRD ROW • EMIKO NAGAI • AYAKO FUJIMOTO • ALICE SAGARA • MASAKO HIRAMOTO • MIYAKO KOSAKA • MAY KAMIBAYASHI • SUMIYE NERIO • KUNIYE YOKOYAMA • YAEKO HAMADA

Outstanding Girls



FRONT ROW • LEFT TO RIGHT •
EMIKO NAGAI • GRACE SAGA-
RA • VIOLA NAKAMURA • BACK
ROW • ALICE NAKAO • MASAKO
HIRAMOTO • HIMI HASHIMOTO

Speedball Team



FRONT ROW • LEFT TO RIGHT • HIBOKO KAMIYAMA •
ALICE SAGARA • HIMI HASHIMOTO • ALICE NAKAO • VI-
OLA NAKAMURA • SECOND ROW • MIYO KITaura • YONEKO
MIYAGE • HELEN TAGHIBO • FRANCES KAWAJIRI • GRACE
SAGARA • MISAKO NAKATSURU • MARY MIKAWA • YOSHIKO
KANZAWA • ITSUKO OMOKAWA • SUMIYE NERIO • MICHIKO
SHIROISHI • KAZUMI ABATA



Letter Girls

FRONT ROW • LEFT TO RIGHT • MARIKO TSUTSUI • YOSHIKO HANZAWA • HIMI HASHIMOTO • ALICE SAGARA • YONEKO MIYAGE • ITSUKO OMOKAWA • MASAKO HIRAMOTO • HIROKO KAMIYAMA • KAZUMI ARATA •



Basketball Team

FRONT ROW • LEFT TO RIGHT • EMIKO NAGAI • MIYAKO KOSAKA • HIROKO KAMIYAMA • HIMI HASHIMOTO • MAY KAMIBAYASHI • MASAKO HIRAMOTO • SECOND ROW • VIOLA NAKAMURA • SUSIE SHISHIDA • MARIKO TSUTSUI • ASAKO ONISHI • ASAKO IKE • MIE YAMAMOTO



GREAT ENJOYMENT IS
OBTAINED IN A VIGOROUS, EX-
CITING SPORT BY MEMBERS
OF THE VOLLEYBALL TEAM.

Signatures





Mrs. Kimball

our COMMUNITY

Snow...

..... AT SUNSET

..... AT A LONELY TOWER

..... AND AT A BLOCK.



Summertime

..... AT A BLOCK



..... AND A BAYOU



Familiar Scenes



.....CANTEENING



.....MESS LINE



.....CYPRUS KNEES



..... ADULT SCHOOL



..... VICTORY GARDEN



..... CONSTRUCTION



Jule Bound!



Congratulations

HOWELL DRUG STORE

111 PINE ST.

PHONE 179 McGEHEE, ARK.

COMPLIMENTS

of

WOLFF BROS

The house of youth

McGEHEE, ARK.

Mcgehee Flower Shop

*Best wishes for
your future success*

Mrs. J. Simmons

McGEHEE, ARK.

Best Wishes

SMITH HARDWARE

AND

FURNITURE CO.

McGEHEE, ARK.

Mrs. Dave Meyer

READY TO WEAR AND
ACCESSORIES ★

McZehee, Arkansas

Congratulation Seniors

STONES JEWELRY STORE

McZehee, Ark.

Best Wishes!

BECK

DRUG STORE

McZehee, Ark.

Good Luck
RELIABLE PHARMACY

Phone 4 McZehee, Ark.

Congratulation!
38 Toppers'

Rohwer Relocation Center

VISIT
MORRIS R. DESSENT

Ladies' ready-to-wear, men's
furnishings - shoes - work clothes

POPULAR PRICE STORE



Lots of luck from the Gang

Rohwer
PHOTO STAFF

Extends



Congratulations

Best Wishes
to the
Seniors

S. C. TOOF & CO.

PRINTERS
ENGRAVERS
STATIONERS

195-201 MADISON AVE.-P.O. BOX 98
MEMPHIS 1, TENNESSEE

Compliments
of

MCGEHEE BANK

McGehee, Ark

Best Wishes
from

THE ANNUAL STAFF

Compliments

of a

friend

DELTA ICE CO.

I C E

PHONE 780

McGehee, Ark