



### THE NORTHWEST TIMES

The Only All-English Nisei Newspaper in The Pacific Northwest

Established January 1, 1947

Published every Wednesday and Saturday of each week. Editorial offices at 304 Main St., Seattle 4, Wash. Phone SEneca 5594. Office hours: 9 a.m. to 6 p.m. daily except Sundays and holidays.

Editor & Publisher... Budd Fukel  
Associate Editor... Hideo Hoshida  
Business Manager... Stanley Karikomi  
Art Editor... Tom Tsutakawa

Special Representatives:

Spokane... Norio Wakamatsu  
W. 325 Trent Ave, Spokane Wash.  
Bus. MAin 6712 Res. L-2382  
Portland... Tom Okazaki  
7404 N. Denver Portland, Oreg.

Subscription Rates:

One month... \$ .75  
Six months... \$4.25  
One Year... \$8.00

Classified Advertisement:

Per word insertion... 5 cents  
Minimum charge... 60 cents

Clean-up suggests a lot of hard work—scrubbing and washing and rinsing and all that. And it is just that—hard work!

But it's worth it. Besides improving the appearance of the community as a whole and besides giving everyone a warm feeling of a fresh start tomorrow, a brisk clean-up, paint-up and fix-up today would go a long way towards making this area a sound business district which it should be if it already isn't because of its nearness to the railroad stations.

We're beginning to see the light, Seattle will adopt daylight saving time this summer.

President Truman this week said the greatest prerequisite for peace "must be sanity—sanity in its broadest sense, which permits clear thinking on the part of all citizens." All these years, we must have been insane.

"Yakima Men Arrested in Speedy Chase" is a solemn headline in an afternoon paper. We have yet to hear of a "slow" chase.

### Husbands Can Be Wrong



Husbands have an annoying habit of describing housecleaning as a "soft touch."

Dr. Elaine Knowles Weaver, noted home economist, who recently made a study of typical housecleaning methods. Dr. Weaver, who checked cleaning habits in a typical group of homes over a four month period, finds that Mrs. America is spending too much time at her cleaning job and does too many hard jobs by hand.

Golden Pheasant Cafe  
Best Chinese Food in Town  
SEneca 9145 307 Sixth Ave. S.

Why Carry Them...  
EUGENE & GOLDBE  
Chinese Hand Laundry and Cleaning  
Complete 3 Days Service  
Free Pickup & Delivery  
EA. 7914 1219 Yesler

Main Shokudo  
All Kinds of Japanese Foods  
505 Main St. SE. 9429

IKEDA & CO.  
WHOLESALE GROCERS  
SEneca 2196  
600 6th Ave. S.  
Seattle 4, Wash.

Yesler Hardware & Plumbing Supplies  
Kiyoshi Yasui  
Bob Hikida  
1713-15 Yesler EA-5660  
Seattle 44

No. 500  
SMITH  
TRADE MARK REGISTERED  
RICE MILL CO.  
DEWITT, ARK.  
COATED RICE  
COATED WITH GLUCOSE AND DEXTRIN. REMOVE BY WASHING BEFORE USING.



### GRADUATING VETERANS

The largest graduating class in the history of the University of Washington will hold its commencement exercises at Edmondson Pavilion on Saturday, June 12th with almost 1500 seniors expected to participate in the ceremonies.

MOON FESTIVAL  
Don't forget the Cathay Post's "Moon Festival," to be held this Friday, May 21st, from 8 p.m. at the Chinese Benevolent Hall.

BOEING STRIKE  
Although the number of Nisei workers at the Boeing plant is small, the effects of the three-week strike are being felt by Sixth and Jackson merchants, in common with the entire Seattle area.

N. P. Hotel  
306 6th Ave. S.  
Y. FUJII  
☆  
Phone MAin 3952

University Flowers and The Flower Shoppe  
Complete Floral Service by JOHN FUKUYAMA  
Call EV. 1560 or MA. 1467

DENTISTS  
DR. S. FUKUDA  
105 Jackson Bldg., MA. 3840  
DR. K. HARADA  
306 12th Ave. S. EA. 8443  
DR. S. HIGASHIDA  
1017 Jackson St. EA. 1000  
DR. S. F. KANEMORI  
670 Jackson St., MA. 9208  
DR. H. MITSUMORI  
114 Jackson Bldg., MA. 0589

MAIN DRUG COMPANY  
PRESCRIPTIONS CAREFULLY COMPOUNDED  
Phone MAin 6647  
522 Main Street Seattle 4, Wash.

NORTH COAST DISTRIBUTORS  
Importing Co. Supply Co.  
515 Maynard W. 27 Main Ave.  
Seattle 4, Wash. Spokane 8, Wash.  
Tel. EL. 4833 Tel. MA. 3715

SMITH 500 Blue Rose Rice  
DAIKOKU Brand Rice  
MARUSHO Shoyu  
KOKUSUI Shoyu  
TAKA Shoyu  
SHIRAYUKI Ajinomoto  
HIME Udon

### Editorials:

#### Is It Worth It?

This is "Paint the Town Clean" week in the Jackson St. area. Everyone in this district has been asked coaxed and urged to clean up his place.

### Wallace to Fly Here from California; Eight Appearances Scheduled for Him

Henry Wallace will fly to Seattle from California this week to carry on locally his campaign for the Presidency.

Wallace will be accompanied by six assistants—including his national campaign manager, C. B. Baldwin, and eight newspaper reporters.

The party will arrive Thursday night in a chartered DC-3. Wallace will make six formal appearances on Friday and two on Saturday.

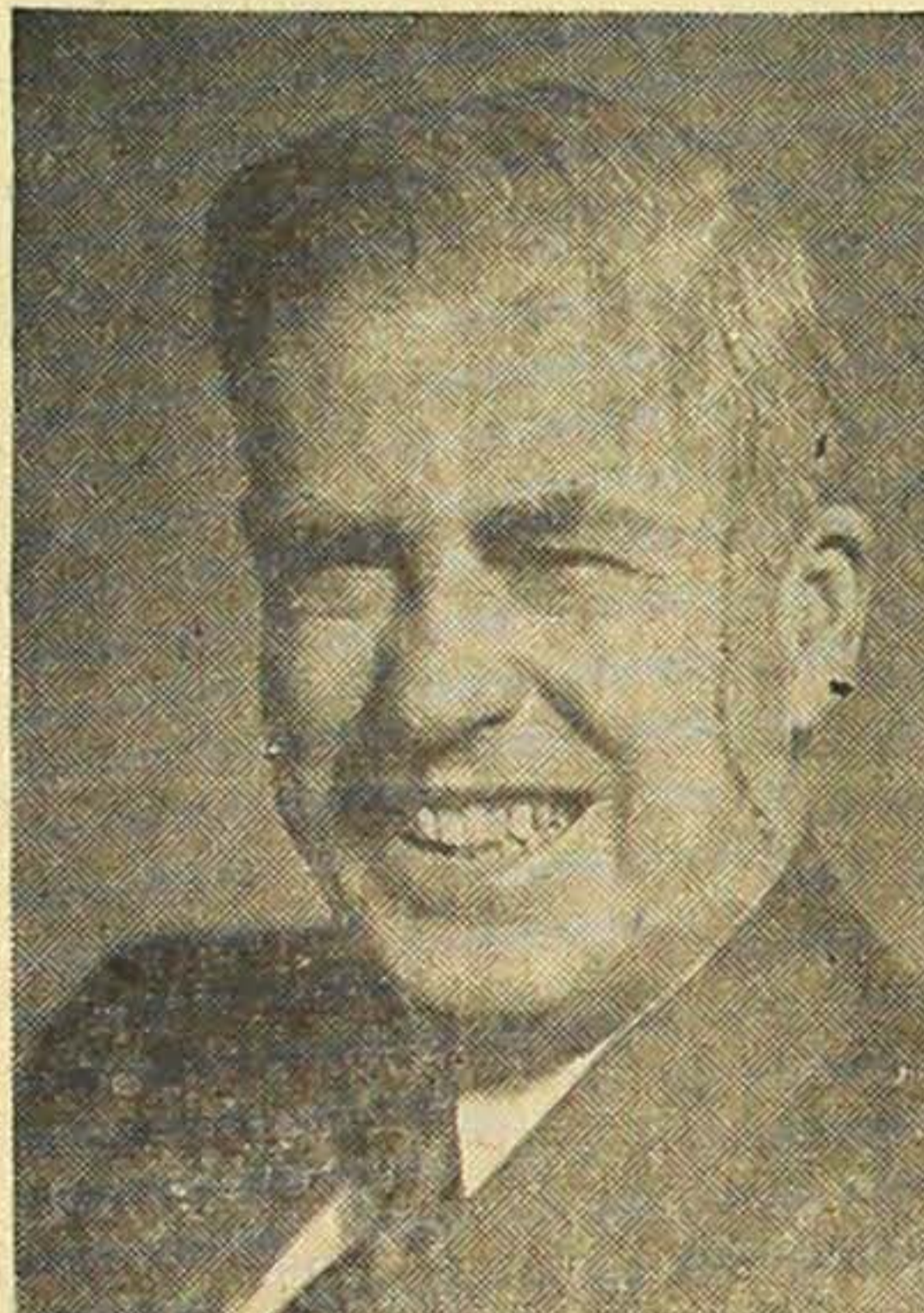
Friday's campaigning will begin at 9:30 a.m. when Wallace holds a press conference in the Camlin Hotel. At noon he will speak in the University District.

At 3 p.m. Friday, Wallace will be interviewed by northwest newspaper men on the Mutual Network's nationwide program, "Meet the Press."

Wallace will be guest of honor at a general reception at the Press Club at 5 p.m.

The pattern of Friday night's meeting will follow that of other mass meetings being staged throughout the country by the New Party. Two musical organizations will participate: the Musicians' Association 14-piece band, directed by Ernie Christensen, and the 50-voice Metropolitan a cappella choir, conducted by Joseph Powe.

Michael Loring, one of the stars of the Broadway stage success, "Oklahoma," will sing. Among the songs he has scheduled are



HENRY A. WALLACE  
"Battle Hymn of '48" and "Traveling," an anti-Jim Crow number.  
William Gallmore, New York newspaperman and radio commentator, will speak before Wallace.  
Boeing Aero-Mechanic's Union, Local 751, has accepted an invitation to send a representative to discuss the issues involved in the strike at the Boeing plant.  
The Progressive Party, which is sponsoring the meeting, has asked all who attend to bring non-perishable food stuffs to be sent to the strikers' families.  
Saturday morning Wallace will discuss minority problems at a meeting to be held in Washington Hall, 14th and Fir.  
At noon, Wallace will be guest of honor at a luncheon meeting in the Olympic hotel, sponsored by the Independents for Wallace, a non-partisan group backing his candidacy.  
The party will leave by plane for Spokane at 2:30 p.m. Wallace will speak twice Saturday evening in the Inland Empire.

Main Street Service  
GAS - OIL - AUTO REPAIR  
12th & Main St.  
EAsT 9614

Uji Barber Shop  
314 6th Ave. S.  
EL 8846

Maneki  
Sakiyaki  
Tempura  
Private Parties  
MAin 9723 304 6th Ave. So.

TAKANO STUDIO  
HENRY Y. MIYAKE  
668 Jackson St.  
Seattle 4, Wash.  
Phone MA. 8186  
CA. 8952

#### Nisei Calendar

MAY  
21—American Legion Post 186 and its auxiliary to sponsor their second annual bazaar, "Moon Festival," in Chong Wah Benevolent Association hall, 522 Seventh Ave. S.  
22-23—Japanese benefit movie to raise "Goats for Japan" funds in local Buddhist auditorium.  
29—Y. B. A. memorial service at Buddhist Church from 7:30 p.m.

JUNE  
4—Annual JSC picnic  
11—Lotus Y. B. A. graduation dinner party honoring all 1948 high school graduates at Buddhist church from 7 p.m.  
27—Lotus Y. B. A.—Shoyukai picnic. Site undecided.

JULY  
4—Nisei Veterans' committee to sponsor Fourth of July sports dance at Palladium Ballroom with Jackie Souders and his orchestra.

SEPTEMBER  
5—Bazaar-carnival to be sponsored by Lotus Y. B. A.  
5—Roller-skating party will be given by Rissho club in Rollerland. Skating hours will be from 10:30 p.m. to 12 midnight.

OCTOBER  
2—25th anniversary dance to be sponsored by Lotus Y. B. A.

He that calls a man ungrateful, sums up all the evil of which one can be guilty.—Swift.

12th Ave. Service Station  
GAS - OIL - MOTOR REPAIR  
MIN and JACK KOGA  
150 12th Ave. OA. 8859

SUSUMI-BUTTERWORTH FUNERAL SERVICE  
670 Jackson St.  
ELiot 0558

Gyokko-Ken Cafe  
508-510 Main St.  
Seattle 4, Wash.

Motorola Car Radio  
Complete Automotive Repairing  
Lubrication  
Gas—Oil—Accessories  
New Tires — New Batteries  
7TH AVENUE SERVICE  
701 Jackson St. EL. 9853 Seattle 4, Wash.  
Charles C. Toshi — Ted K. Imanaka — George Koyama

STANLEY Y. KARIKOMI  
District Representative  
The  
MANUFACTURERS Insurance LIFE Company  
Branch Office  
Seattle 1  
331-6 Skinner Bldg. Washington  
Telephone: ELiot 3993  
Residence: OApital 8602

#### Ultra-Modern DUPLEX

One 5-rm., one 6-rm. apt. Separate utility. Lot 60 x 120. Immediate possession. Income \$120 a month. NOT UNDER CONTROL. Excellent neighborhood. \$2,500 handles. Less for veterans. PR. 8688.

### Chihara presents NEW LIFTS TO LIVING by Westinghouse

#### Everything you want in a Refrigerator!

### Westinghouse

PLENTY-PLUS REFRIGERATOR  
PLENTY-PLUS Convenience Long Life Storage Space Economy

American Heritage

9.3 cubic feet

### ... Delight of Thrifty Women!

#### Westinghouse COMMODORE ELECTRIC RANGE

By actual kitchen tests, the Westinghouse Commodore saves time, work and money! Accurately controlled heats, in the exact amounts for every food, eliminate waste. No guesswork, worry, pot watching. Cook automatically, with the addition of accessory timer. Priced at only

### CHIHARA Jewelry

612 Jackson St. Seattle, Wash. MAin 2275



