

Help Oregon's
Flood Victims

The Northwest Times

U. S. POSTAGE
Sec. 562, P. L. & R.
PAID
Permit No. 5184

The Only All-English Nisei Newspaper in The Pacific Northwest

VOL. 2, NO. 61 Phone: SEneca 5594 SEATTLE 4, WASHINGTON 304 Main Street WEDNESDAY, July 21, 1948

Around a Bonfire, Northwest Bussei Enjoy Weiner Roast at Alki Beach



—Candid Shot by Ralph Ochi.

July 31 Deadline for Renewals Of National Service Insurance

The Veterans of Foreign Wars today reminded World War II veterans that July 31, 1948 is the deadline for renewals on National Service Life Insurance, without taking a physical examination.

Walter A. Deebach, Staff Service Officer for the V.F.W., urged veterans who have allowed their G-I insurance policies to lapse to reinstate policies immediately. He warned that some veterans, whose physical well-being has diminished since the end of the war, may be unable to reinstate the policy since passage of a physical examination after the July 31 deadline will be required.

Deebach announced that the V.F.W. state headquarters office, 4134 Arcade Building, Seattle, will remain open until 11 p.m., July 31, to assist veterans caught in the last-minute rush of reinstating their insurance.

Clerk Dreams Of Monte Carlo

TOKYO, July 21—An obscure ward clerk's dream of a multi-million-yen Monte Carlo on a string of tiny islands in Tokyo may actually come true.

The Tokyo reconstruction board has asked the national government to put up 176 million yen—about \$88,000—for the project.

The Monte Carlo of the Orient was dreamed up one day last year by Hideo Nakahara, a middle-aged clerk in Shinagawa, one of Tokyo's biggest and poorest wards.

Hideo's blueprint, which caught on with his superiors, calls for two hotels, a water playground, drive-ways, promenades and roulette.

All of this would be built along the shoreline and on a series of old fortress islands in the bay, reported the Chicago Daily News Foreign Service.

Alumni Picnic Ducats Sold

Tickets for the University of Washington Japanese Alumni Association's picnic are now on sale at Kashiwagi's Tailors, Main Drug and Tokuda Drug, according to an announcement made today.

The alumni association picnic will be this Sunday, July 25, at Beaver Lake.

Daily Dozen



Physical fitness, an essential in the nursing profession, is one of the important goals set for students at Cook County School of Nursing. Located in the heart of Chicago's famous Medical Center, this modern nurses' residence and training ground utilizes a big city rooftop for summer practice in keeping fit. Its solarium and huge open deck are gay spots in recreation hours.

Summer students from all parts of the country include many who are taking a five year collegiate course. This leads to both a college degree and a diploma in nursing, and is open to both men and women. Cook County has affiliations with accredited colleges in Illinois, Pennsylvania, Iowa, Michigan and Wisconsin.

Edna S. Newman, director of the school, is already receiving applications for the regular fall classes which open in September.

Nobue Shimizu Elected Chairman Of Reactivated Bussei Group

Reactivation of the Northwest Buddhist Sunday School Teachers' League took place during the two-day conference last week-end here with the election of Nobue Shimizu as chairman.

Miss Shimizu, long-time active member of the Seattle Lotus Sainenkai, was a popular choice. Her cabinet members consist of Shiz Ochiai of Portland, vice chairman; Fusae Masumoto of Seattle, secretary; and Hisako Kaku of Ontario, treasurer.

Mrs. Terakawa of Portland, the Rev. S. Masunaga of Seattle and Lily Moringa, also of Seattle, were named on the research committee. Mrs. Terakawa and Rev. Masunaga will serve as advisers. Other members of the research committee are to be chosen later, it was understood.

The league conferees decided to hold a teachers' training session twice a year, the first one to be held the early part of next year in conjunction with the Northwest YBL cabinet meeting in Ontario, Oreg.

Rev. Masunaga, it was announced, will tour various Buddhist temples throughout the Pacific Northwest to study Sunday School conditions during the year.

To escape the heavy details of a conventional conference, the Sunday School teachers also took time out to be welcomed with a dinner by the Lotus Sainenkai cabinet and S.S. teachers here, and also enjoyed an outdoor party at Alki beach.

Lotus to Weigh Jubilee Plans

General meeting of the Lotus Sainenkai will be held at 7:30 p.m. this Friday, July 23, in the local Buddhist temple, it was announced today.

Sainenkai members, at this gathering, will discuss the Golden Jubilee, its queen contest, and the scheduled bazaar in September. Transportation to the San Francisco Buddhist Golden Jubilee also will be on the agenda of the Friday meeting.

Dance Scheduled In YW Saturday

Young people of Seattle, especially Service men and women and veterans, are invited to the Beachcomber's Ball sponsored by the Cosmopolitans of the Young Women's Christian Association at 8:30 p.m., Saturday, July 24, in the lounge of the YWCA at Fifth and Seneca. Members of the Alaska Communication System will be guest of honor and Mrs. Mabel Garthley, Spanish guitarist, will entertain during the intermission.

The dance is informal, refreshments will be served and the charge is 50 cents each. For further information, phone Mrs. Ilse Vollman at Elliot 4800, between the hours of 9 a.m. and 6 p.m.

25 Nisei to be Official Observers At Founding Convention of New Party; Wallace Group Meets in Philadelphia

By TOORU KANAZAWA

NEW YORK, July 21—Twenty-five Japanese Americans, including two from Chicago, will participate as official observers at the Founding Convention of the New Party, to be held in Convention Hall at Philadelphia, July 23, 24 and 25.

For the first time in the history of American political life, Nisei will take part in a national convention and witness the birth of a third party.

At the request of Rexford G. Tugwell, Chairman of the New Party's Platform Committee, representatives of the New York Nisei for Wallace Committee will appear before his committee on Thursday afternoon, July 22, to present their views and suggestions. The hearings are to be held in the Ballroom of Convention Hall in Philadelphia.

According to NWC Chairman Harry Oshima, who will head the representatives:

"We are going to the Philadelphia convention to work for a solid civil and minority rights plank which will make the Democrats and Republican planks sound like hollow logs. Preliminary studies of problems concerning Japanese in America have already been submitted to national headquarters by the NWC.

"We urge Nisei to follow closely the proceedings of our party convention," Oshima stated. "If we don't miss our guess, they are going to see a truly democratic convention in action—one in which for the first time in history the desires and hopes of minorities and nationalities which have suffered discrimination will be given full consideration.

"There will be no racist like Warren nominated in our convention; nor will our party make it difficult for Negro delegates to be seated, nor bar liberals like the Americans for Democratic Action from Convention Hall."

Official observers from New York who have already signed up include: Harry and Chiye Oshima, Fuki Fukiage, May and Yo Fujii, Lewis Suzuki, George Kawata, Reiko Urabe, Gary Chikase and Tooru Kanazawa. The observers from Chicago are: Miye Uyeno and Toshiye Ishimoto.

Others who are unable to attend the convention, have signed up to attend the nomination and acceptance rally to be held Saturday evening, July 24, in Shibe

Park. A special rally train will run Saturday afternoon.

The convention program has a scheduled the Nationalities Division meeting at 2 p.m., Friday, July 23, in the Arena at Convention Hall. Besides reports, a discussion of a proclamation to be issued from this session, and caucuses of the various national groups, two important matters will be taken up:

To describe the participation and experiences of the different national groups in the Wallace campaign and to evaluate their work, brief reports will be made by representatives of each of the national groups. The Nisei report is to be given by Chiye Oshima and Taxie Kusunoki.

Second, brief statements of the national problems and needs of each of the nationality groups, and the importance of nationality solidarity. Harry Oshima and Tooru Kanazawa will report for the Nisei.

New Red Curbs



BERLIN, GERMANY—(Sound-photo) — Major General Georgi Alexandrov, the Soviets' leading aviation expert in Berlin, is pictured as he hints at new red curbs on air traffic between Berlin and the western occupation zones. The hints were made as he renewed Soviet charges that the British were to blame for the recent air collision between a British commercial plane and a Soviet Yak fighter near Berlin in which 15 persons died, and announced, "General Sokolovsky will take measures to regulate air traffic and safeguard the lives of Soviet flyers." Sokolovsky commands the reds in Berlin.

Nisei Calendar

JULY

25—U. of W. Japanese Alumni Association picnic at Beaver Lake.

25—Second annual American Legion Post 186, Cathay Post, picnic at Gaffney's Grove at Lake Wilderness.

29—Bowlers' supper dance from 8:30 p.m. to 12:30 a.m. in New Chinatown Cafe, corner of Sixth Ave. and Main St.

SEPTEMBER

5—Bazaar-carnival to be sponsored by Lotus Y. B. A.

5—Roller-skating party will be given by Rissho club in Rollerland. Skating hours will be from 10:30 p.m. to 12 midnight

OCTOBER

2—Lotus Y.B.A. 25th anniversary dance. Semi formal.

16-17—Buddhist Auditorium Management Board entertainment.

23—J.S.C. Invitational Homecoming dance. Semi Formal.

DECEMBER

24—Christmas Eve semi-formal orchestra dance by Nichiren Risshos.

12 Beautiful Sanctioned Alleys



Keep in Form
For the Fall Season

MAIN BOWLING ALLEY

The MAIN Place to Bowl!

306 Main St.

MAin 9399

CARD OF THANKS

We wish to thank our many friends for their beautiful floral offerings and kindness extended during our recent bereavement.
Toyoyiro Yamada and family

Buddhist Picnic At Lincoln Park

Bukkyo Kai's Sunday School picnic will be this Sunday at Lincoln park, members of that church were reminded today.

Special busses will leave the Buddhist temple at 10:30 a.m. and 11:30 a.m., and return from Lincoln park at 5:30 p.m. and 6:30 p.m.

Kin of Victims To File Claims

LOS ANGELES, Calif., July 21—Families and heirs of two Nisei girls and five other persons who were killed in the O'Connor electro-plating plant explosion of Feb. 20, 1947, are expected to file claims shortly.

The two Nisei girls, Akiko Otomo, 22, and Alice Shimeta Iba, 22, both employees of the O'Connor firm, were killed instantly by the blast. The body of Miss Iba was never found.

Repose and cheerfulness are the badge of the gentleman—repose in energy.—Emerson.

Obituary

YASUKAZU NORITAKE

Mr. Yasukazu Noritake, 75 years old of 1711 Washington St., died in King County Hospital No. 2 on Sunday, July 18.

Surviving are his wife, Mrs. Asaji Noritake of this city, and two sons, Cyrus Shoichi of Elizabeth, N. J., and Henry Masami of Toledo, Ohio.

Mr. Noritake came to this country nearly fifty years ago, and until the evacuation was the owner and manager of an apartment house.

Funeral services will be held at 7:30 p.m., Saturday, July 24, in the Nichiren Buddhist Church, Crematorium rites will follow in Butterworth's Committal Room. The Reverend Benmyo Oda will officiate.

Wake services will be 7:30 p.m., Friday, July 23, in the Nichiren Buddhist church.

Arrangements were made by Sumi-Butterworth Funeral Service.

Testifies



WASHINGTON, D. C.—(Sound-photo) — Charles R. Denny, above, vice president of the National Broadcasting Company, told the Senate expenditures committee investigation assertedly "slandorous" broadcasts to Latin America that only "a check of the files" was made on two men responsible for the much-criticized "Voice of America" programs. Sen. Ferguson, (R) of Mich., immediately demanded that the FBI investigate fully all writers employed on "Voice" programs broadcast by private companies under state department contracts.

The Northwest Times

THE ONLY ALL-ENGLISH NISEI NEWSPAPER
IN THE PACIFIC NORTHWEST
Established January 1, 1947

Published every Wednesday and Saturday of each week. Editorial offices at 304 Main St., Seattle 4, Wash. Phone SENECA 5594. Office hours: 9 a.m. to 6 p.m. daily except Sundays and holidays.

Subscription Rates:
One month.....\$.75
Six months.....\$4.25
One year.....\$8.00

Classified Advertisement:
Per word insertion.....5 cents
Minimum charge.....60 cents

Northwest Airlines Folder Cites Progress of Alaska's Industries

Alaska's modern cities and thriving industries are a far cry from the ice-locked land of eskimos and totem poles which designate Alaska in the popular imagination—and Alaska is only 7% flying hours from Seattle.

This is pointed out in a four-color advertising pamphlet on Alaska which is really a brief but comprehensive travel book released to thousands of potential Alaska visitors by Northwest Airlines, whose planes fly to the northern tourist center.

The folder, besides describing Alaska's modern progress and listing outstanding places to visit, includes a big map of the territory showing in detail the location of cities, roads, sports centers, mines, roadhouses, lodges and camps.

Flanking the 10 by 12 inch map are dozens of pictures of typical Alaskan scenes.

A handy table in the folder lists flight times and fares on NWA routes from most major U.S. cities, and points that the 10 per cent round trip discount offered by Northwest Airlines applies to Alaskan flights by NWA.

Services at YMCA

First Interracial Christian Church of Seattle will hold services at 8 p.m. this Sunday, July 25, in the YMCA chapel, 909 Fourth Ave. The Rev. R. W. Pruitt will speak, and William D. Foster will be in charge of music.

This group also is in charge of Sunday School at the Holly Park project. The Rev. Morgan W. Tann is superintendent there.

ON POLITICS:

Dialogue in Hell

by Jack Scott

(From Vancouver Sun)

OTTAWA, July 21—The ban against Japanese in British Columbia coastal areas will stay in effect for at least another year, it was learned today.—News item.

The scene is Hell. As we look in, Adolf Hitler and Dr. Goebbels are sitting in a livid nook, toasting marshmallows over a bed of coals and discussing current events in the World. Hitler is speaking.

HITLER: ...and otherwise things are going well?

GOEBBELS: Ja, Mein Fuhrer. The latest reports from The World are satisfactory. Just as you would have them.

HITLER: Anything new from America? Any new lynchings in South Carolina?

GOEBBELS: (regretfully) Nein, Mein Fuhrer. (He consults the latest bulletins from his agents on Earth.) Ah, but here we have a reassuring report. Three Negroes sued a railway company for putting them in a Jim Crow coach.

HITLER: Non-Aryan s w i n e! They were not successful, of course?

GOEBBELS: Of course not, Fuhrer. It was in the southern states.

HITLER: Hmmm. And the Jews? Anything special to report?

GOEBBELS: Nothing special. Just the usual world-wide reports of them being verboten in exclusive clubs, residential areas, fraternities and so on. Nothing unusual.

HITLER: Ah well, at least my work is carried on satisfactorily.

GOEBBELS: Splendid, one might say.

HITLER: Well then, Herr Goebbels, if there is nothing further, I'm off to the live steam baths.

GOEBBELS: If I may detain you, Mein Fuhrer, I think you will be extremely interested in a report from one of our agents in Canada.

HITLER: Canada? I n d e e d? (Ruefully) That is the country which produced such fanatical fighters for... democracy. If you'll pardon the expression, Herr Goebbels?

GOEBBELS: (chuckling and kicking up his club foot with glee) I knew you'd be interested. There's good news from Canada, Mein Fuhrer.

HITLER: Come now, Herr Goebbels. Quickly. Give me the details.

GOEBBELS: If I may read from the official report? (he reads.) 'The ban against Japanese in British Columbia coastal areas will stay in effect for at least another year.'

HITLER: (arching a singed eyebrow) But I don't understand, Japanese in Canada? Our former allies?

GOEBBELS: (excitedly) Nein, nein, nein. You have missed the point, Mein Fuhrer. True, these people look like Japanese. But, in reality, they are legal Canadian citizens. Many of them do not even speak Japanese. Many of them are graduates of the University of British Columbia.

HITLER: (with a look of cunning) I begin to understand, dear Doctor.

GOEBBELS: British Columbia has made all the rest of Canada a kind of ghetto for the Japanese. The ramifications of this are far-reaching. As you well know, Mein Fuhrer.

HITLER: Indeed I do, doctor. Surprising how our former critics and enemies have picked up our techniques, eh?

GOEBBELS: Precisely my own view, Fuhrer. Indeed, the Japanese are just as good sport as the Jews. Absolutely no defense. Why, our agents assure me that many of the leading British Columbia businessmen are involved. Naturally, they don't want the Japanese to return as competition.

HITLER: Naturally.

GOEBBELS: We have some splendid men on our side. Of course, there are the usual rabble-rousers, the idealists.

HITLER: (holding his sides) Stop, Herr Doctor, you're killing me.

GOEBBELS: But, after all, what are a few Japs?

HITLER: (controlling his laughter) You are a wonderful mimic, Doctor. A few Japs, a few Negroes, a few Irish, a few Roman Catholics, a few French-Canadians. Himmel! We have given the world a philosophy! Sometimes I wish I were alive to enjoy it.

(Continued on Page Four)



RAIN SAVES PRODUCE ROW

Or at least, so thought Nisei Vets fans viewing Sunday's ball game at Rainier. Using a revised line-up, Manager Joe Kesamaru's charges scored four runs in the opening frame and one more in the second for a 5-1 lead at the end of two full innings of play, only to have the umpires call an end to the proceedings on account of moist weather conditions.

The Vets gathered three hits during the brief workout, Fujiwara, Yamaguchi and Saito doing the damage with the stick. Pitcher George Shimizu, after allowing Produce Row two singles and one run in the 1st inning, settled down and retired the opposition in quick order in their half of the second frame, with no hits, no runs, and no errors.

As a result of Sunday's game be-

ing washed out by rain, the Vets will have to try once again for their sixth victory of the Puget Sound season, their present record being five wins, four losses.

NVC PICNIC

The big NVC picnic, the one the whole community has been waiting for, will be held at Heiser's Shadow Lake on Sunday, August 29, according to NVC Social Chairman Ed "Duffy" Kiyohara, who has sewed up the popular picnic resort on an exclusive basis for the entire day.

For the pleasure of its guests, Heiser's Shadow Lake offers not only boating and swimming privileges, but also two double tennis courts, five ping-pong tables, two ball fields, plus horseshoe and badminton courts.

During the afternoon of the picnic, the NVC will sponsor an open tennis tournament and a fishing derby, to be managed by Henry Yorozu and Skid Arista, respectively. Shadow Lake is reported to have been planted with 12,000 trout, which ought to encourage the fishermen to bring out their tackle.

As an extra added attraction, the NVC Old-Timers will oppose Cathy Post in a softball game. In the evening, an orchestra dance will be held.

The entire community is invited to come out and enjoy itself at the NVC picnic. Admission prices will be 34 cents for adults, 15 cents for children, plus 50 cents per person for the dance, the extra charge being necessary in order to defray orchestra expenses.

SHORT SLANTS

Recent purchasers of new automobiles include newlywed Haruo Kato, who has an Olds, and Richard Setsuda, with a Chevrolet. It's been such a long time since Dick has done any regular driving, that he occasionally forgets to remember there are such things as signal lights in this world of traffic regulations. Hiroshi "Shadow" Nakashima, recent U. W. graduate, is now employed at Friedlander's... It is rumored that the softball game between NVC and Cathy Post, to be played at the picnic, will find the winners enjoying themselves on beer at the expense of the losers. Could such things be?

PAUL S. KASHINO
New York Life Ins. Co.
Insurance Bldg.
2nd & Madison
Res. EA. 2508 Bus. EL. 0609

Central Cleaners
PICKUP & DELIVER
918 Pine St. Se. 0318
Frank Fukano

West Coast Printing Co
TOMITA BROS
514 Main St MA. 0233

MAIN FISH CO.
WHOLESALE
Pier 49
Foot of Washington St.
Seattle 4, Wash.
ELiot 0681

Cosmos to Hear Palestine Story

Bailey Nieder, recently returned from work with the Jewish forces, will tell of his personal experiences in Palestine at the monthly Sunday night Forum of the Cosmopolitans, at 8 p.m., July 25, in room 13 of the Young Women's Christian Association at Fifth and Seneca. There will also be a short movie illustrating his experiences. The public is invited.

Nieder, a graduate electrical engineer of Massachusetts Institute of Technology, spent two months touring Palestine talking with both Jews and Arabs and his return to this country via Europe was made possible by Hagana.

YUEN LUI STUDIO
Modern Portraiture
Weddings and Social Functions
419 7th Ave. So. MAIn 0991
Seattle 4, Wash.

William Y. Minbu
ATTORNEY & COUNSELOR
122 Jackson Bldg.
318 6th Ave. S.
Phone MAIn 2519
Res. PRospect 2306

Martha's Beauty Shop
MARTHA IKEDA
124 13th Ave.
Shop—EASt 6660

FRANK S. YANAGIMACHI
Accountant—Tax Consultant
Notary Public
Available Evenings 318 6th S.
by appointment 124 Jackson Bldg.
PR. 6414 SE. 6387

Co-op Radio
Home & Car Radio Service
Free pickup and delivery
Shig Akada
1437 Jackson CA. 2125

JOHNNY'S DRY CLEANERS
Cleaning—Pressing—Dyeing
Alterations
JOHN FUNAI
EASt 9632
1310 Yesler Way

Dr. Terrance M. Toda
OPTOMETRIST
— 676 Jackson Street

Star Food Products
Sumio Nagamatsu
516 Main St.
ELiot 8670

Sagamiya & Co.
524 MAIN ST.
MAIn 7531

GOSHO DRUG CO.
656 JACKSON ST.
PHONE SE. 9150

Anna Kay's Beauty Salon
110 14th Ave.
Phone EA. 7157

KANNO CO.
EDDIE KANNO
Repair Radio
Washing Machine
Electrical Appliances
MA. 2160 606 Main St.

Nitta's Food Mart
609 King St.
Seattle, Wash. SE. 0829
Fresh fish, smoked meat,
vegetable, fruits
Free Delivery

JACKSON BEVERAGE
Jackson St. Seattle
Call EL. 1555 for delivery
Joe Tsujimoto Roy Okada

BO'S GROCERY and Meat Market
A Complete Food Mart
PR. 0544 1725 Yesler
We Deliver

Remember.....for flower values
It's VALLEY FLORIST
CA 9960 1211 Rainier Ave. Geo Iwasaaki

ROLLERLAND
The Nation's Finest Skating Pavilion
3 Blocks South of Renton Junction on
Rainier Ave.
Special Parties by Appointment
L.A. 2230 or Renton 5417
open every evening 8:00 to 11:00 p.m.
late sessions on Friday & Saturday till 1:00 a.m.
Free Bus Service to Seattle Transit System

YESLER APPLIANCE "WILL" SHIOMI
Sales & Service
Licensed Electrician
Expert Radio Service
1720 Yesler Way EASt 5015

Yesler Way Auto Service
BEN FUKUTOMI JACK KUDO
COMPLETE AUTOMOTIVE SERVICE
HEADLIGHT ADJUSTMENT
COMPLETE BRAKE SERVICE
CA. 9561 17th and Yesler Way

We Have a Complete Stock of Cameras and Movie Equipment
KODAK—ZEISS IKON—ARGUS
ROLLEIFLEX—BELL—HOWELL
\$3.16 to \$291.00
see this popular
KODAK FOLDING CAMERA
now in stock
You'll find this an exceptionally competent, yet reasonably priced, picture taker in the most popular snapshot size, 2 1/4 x 3 1/4 inches. With its easy-to-work lens-and-shutter combination you'll get good snapshots from the start. Comes with fixed-focus Kodak lens and Dak shutter (time, bulb and instantaneous settings). It's a handsome, sturdily built camera, designed to give years of service. Let us show you.
For expert finishing of those treasured shots bring your films to...
W. NAKAMURA CO.
664 Jackson Street
Phone: SE. 4716 Seattle, Wash.

the New
Frigidaire "Compact-7"
Holds more food
Than ever before in the same kitchen space!
More R in A new kind of refrigerator with MORE usable space on the new flat top, MORE frozen food storage in the big new Super-Freezer, MORE room for keeping fresh or frozen meats, MORE space for leafy vegetables and fruits, MORE usable shelf space for other foods, MORE food storage capacity per dollar.
with all these FEATURES
• Famous Motor-Mixer mechanism
• Exclusive QuickCube Trays with Instant Cube Release
• All- porcelain inside, stainless porcelain on bottom
• Large Super-Freezer
• Multi-purpose Storage Tray
• Full-width, roller-bearing Hydrator, glass-topped
And Many Other Frigidaire Features
Model Shown is MJ-7
\$239.75
Other "Compact" models
More Frigidaires Serve in More American Homes Than Any Other Refrigerator
Hikida Furniture
818-20 Jackson St. ELiot 2935 Res. MINor 0148

THE Sporting Thing

To Avoid Squawks and What Have You

Every time this column conductor concludes an all-star mission, there are squawks...

In the interest of peace we will ask the managers of teams entered in THE NORTHWEST TIMES Baseball League to send in their all-star selection for the '48 season. All selections should be addressed to THE NORTHWEST TIMES, 304 Main St., Seattle 4, Wash.

Instead of:

- "Put 'em in a box,
- "Tie it with a ribbon,
- "Throw it in the deep blue sea."

Just mail it in, fellows.

Sideline Tonics

Tommy Yee who recently won the Frisco Examiner's hole-in-one golf tournament in San Francisco is a South Pacific vet... the Night Owls and their kind of Portland had better forget their proposed trip to Seattle come Aug. 1; Main Bowl will be closed from July 26 to Aug. 8... only Nisei Olympic swim hope for '52 is 15-year-old Tak Iseri of Sacramento who is the Northern California 100-yard breaststroke and 220-free style champion... it may be recorded here that Ted Shinoda of the South End Travelers officially won the batting crown in THE NORTHWEST TIMES baseball league with a .687 average... they take softball very seriously in Los Angeles: a spectator, ired by a disputable decision, punched an umpire in the mouth... wonder when we'll ever see the return of such wrestling clowns as Tetsuo "Rubber Man" Higami in Seattle?... speaking of baseball clubs, the most feared and the hardest-hitting Nisei outfit in this area was Tommy Sakai's Western Giant nine which had a lineup of men, all of whom were capable of swatting the ball out of the park...

Kutchicks, Yat-Cha-Lay Tied In Mixed Pin Home Stretch

MIXED FOURSOME LEAGUE STANDINGS (As of July 17)

| Team | W | L |
|-------------|----|----|
| Kutchicks | 29 | 19 |
| Yat-Cha-Lay | 29 | 19 |
| That's All | 28 | 20 |
| I-Sos | 24 | 24 |
| Four Roses | 24 | 24 |
| Four Lorns | 22 | 26 |
| Railroaders | 19 | 29 |
| Cood B | 17 | 31 |

FRIDAY, July 23 In Main Bowl

Kutchicks vs. I-Sos
Yat-Cha-Lay vs. Four Roses
Cood B vs. Four Lorns
Railroaders vs. That's All

Both Yat-Cha-Lay and Kutchicks swept their series last Friday night in Main Bowl to remain in first-place tie in the mixed four-some league. The teams will roll their final matches next Friday, July 23.

Yat-Cha-Lay crushed the Railroaders, 4-0, and the Kutchicks whitewashed Cood B's, 4-0.

In other games, That's All walloped the Four Roses, 4-0, and the Four Lorns tied I-Sos, 2-2.

Heading the night's tenpin aces was Tak Shibuya of the Kutchicks who assembled 209, 192 and 200 games for a hefty 601 series. Others in the 500-plus bracket were: Cood B—George Fujimoto 522; Kutchicks—Bill Tanaka 501; Yat-Cha-Lay—Pruney Tsuji 554; Four Lorns—Biff Inashi 525; I-Sos—Jack Nitta 540; Four Roses—Jim Kuramishi 566; That's All—Morrie Yamaguchi 561, George Kimura 521.

The top women keglers were Kiki Yamamoto (486) of Yat-Cha-Lay and Mary Tsuchikawa (483) of Kutchicks.

The results follow:
YAT-CHA-LAY (4)—Kiki Yamamoto 486, J. Wong 500, Dot Kodama 400, Tsuji 554; RAILROADERS (0)—Kimi Tanaka 408, K. Oyama 498, Norma Tada 407, T. Tada 477.

THAT'S ALL (4)—Mich Hideshima 428, Yamaguchi 561, Pat Hidaka 453, Kimura 521; FOUR ROSES (0)—Dummy 330, Nishimoto 470, Jean Terao 426, Kuramishi 566.

KUTCHICKS (4)—Rose Young 456, Tanaka 501, Mary Tsuchikawa

483, Shibuya 601; COOD B (0)—Dot Inai 354, Maekawa 417, Madge Ono 361, Fujimoto 522.

FOUR LORNS (2)—Aiko Kawaguchi 426, Kiyono 424, YoYo Konishi 371, Inashi 525; I-SOS (2)—Miye Ishikawa 416, O. Tsuchikawa 420, Sue Lew 417, Nitta 540.

Natori Captures "A" Tee Honors

Ed Natori of China Import & Export clubbed his way to first place in the "A" flight of the Puget Sound Golf Association tournament last Sunday with a gross 74, less 11 handicap for net 68. A stroke behind him in the "A" meet at West Seattle was M. Yamaguchi.

On the same West Seattle course, Sakoda fired a gross 91, less 26 handicap for a net 65 to win top "C" flight honors.

N. Nakagawa, Nakao and Fukano tied for first spot in the "B" flight at Jefferson park. The results follow:

"A" FLIGHT

| Gr. | Hdep. | Net |
|-----------------|-------|-------|
| 1. Natori | 79 | 11 68 |
| 2. M. Yamaguchi | 78 | 9 69 |
| 4. K. Nakamura | 81 | 11 70 |
| 4. K. Yamaguchi | 82 | 12 70 |
| 5. Kashiwagi | 82 | 11 71 |
| 6. Art Louie | 83 | 12 71 |
| 7. Hattori | 80 | 8 72 |
| 8. Okimoto | 81 | 9 72 |
| 9. Lee | 83 | 11 72 |

"B" FLIGHT

| Gr. | Hdep. | Net |
|-----------------|-------|-------|
| 1. N. Nakagawa | 80 | 15 65 |
| 2. Nakao | 80 | 15 65 |
| 3. Fukano | 81 | 16 65 |
| 4. Umino | 81 | 15 66 |
| 5. Tanabe | 84 | 16 68 |
| 6. Funai | 85 | 17 68 |
| 7. Kinomoto | 87 | 19 68 |
| 8. Sab Iwana | 84 | 15 69 |
| 9. Urakawa | 87 | 18 69 |
| 10. Hayashi | 88 | 19 69 |
| 11. Sakahara | 88 | 19 70 |
| 12. Kuramoto | 89 | 19 70 |
| 13. W. Nakamura | 88 | 17 71 |
| 14. Miyahara | 87 | 15 72 |
| 15. Y. Furuta | 90 | 16 74 |

"C" FLIGHT

| Gr. | Hdep. | Net |
|-----------------|-------|-------|
| 1. Sakoda | 91 | 26 65 |
| 2. Tai | 93 | 24 69 |
| 3. Tsuneishi | 90 | 20 70 |
| 4. Takagi | 102 | 30 72 |
| 5. Ura | 99 | 29 73 |
| 6. Ted Jue | 96 | 23 73 |
| 7. T. Yamaguchi | 100 | 27 73 |
| 8. Yamagiwa | 94 | 20 74 |
| 9. Momoda | 96 | 22 74 |
| Nishimura | 96 | 22 74 |

Schedule

SUNDAY, July 25

NORTHWEST TIMES LEAGUE
At Rainier No. 2
12 noon—Fife A. C. vs. South End Merchants.
At Garfield No. 2
12 noon—Lotus Mercury vs. Lotus Ashuras.
PUGET SOUND LEAGUE
At Rainier
12 noon—Nisei Vets vs. Renton Merchants
At Liberty Park (Renton)
2 p.m.—Rainier Beach vs. White River.

Playoff Games Set for Sunday

The four teams in THE NORTHWEST TIMES Baseball League "sudden death" playoffs will try again.

Bombed out by the rains last Sunday, Fife A. C., Lotus Mercury, South End Merchants and Lotus Ashuras will resume their games this Sunday, July 25.

Fife A. C., which finished at the head of the standings after the regular season, will once more come into town to face the South End Merchants. The visitors and the Merchants will meet from 12 noon at Rainier No. 2 field.

The men from Fife will probably send Joe Asahara back to the mound, and the Merchants will have "Salty" Mizuta throwing his all from the hillock.

In the only other playoff game, Lotus Mercury will take on Lotus Ashuras. Mercury's slab choice is expected to be "Tinky" Terada, and Ashuras' Shig Akada. The two Buddhist aggregations will tangle from 12 noon at Garfield.

KAZ'S Signs

129 16th Ave. CA. 9824
Seattle 22, Wash.

Main Street Service

GAS - OIL - AUTO REPAIR
12th & Main St.
EAsT 9613

Golden Pheasant Cafe
Best Chinese Food in Town
Eneca 9145 307 Sixth Ave. S.

TERRY'S AUTO SERVICE
1202 Rainier Ave. EA. 9459
Gas-Oil-Auto Repair
MORIO TERAYAMA

JACKSON GROCERY
1803 Jackson St. Ea. 0603
*prop. Mrs. Hannah Mackawa

Prescriptions Carefully Compounded
Phone MAIn 6647

MAIN DRUG CO.
522 Main St. Seattle 4, Wash.

Complete Floral Service by JOHN FUKUYAMA

University Flowers and **The Flower Shoppe**
Call EV. 1560 or MA. 1467

Yesler Hardware & Plumbing Supplies
Kiyoshi Yasui
Bob Hikida
1713-15 Yesler EA. 5660
Seattle 44

Gyokko-Ken Cafe
508-510 Main St.
Seattle 4, Wash.

Rains Give Fife, Lotus Mercury Another Chance in Playoffs

The rains saved both Fife A. C. and Lotus Mercury from possible defeats in the NORTHWEST TIMES Baseball League playoff games last Sunday in Seattle.

Merchants Ahead 1-0 in Third

The South End Merchants were ahead 1 to 0 when the rains came in the first of the fourth inning.

"Salty" Mizuta who had advanced to third after being sacrificed by Hiro Nishimura, scored in the lower half of the second inning when Raymond Sasaki stepped into one of Fife hurler Joe Asahara's fast pitches for a single between short and third to left field. Mizuta also tolled on the mound for the Merchants and had the situation well under control, striking out five Fife men during the abbreviated no-contest.

Tennis Players Will Organize

Beginners and advanced tennis players, men and women, interested in joining a tennis club are invited to attend the second organizational meeting to be held 8 p.m., Monday, July 26 in the Buddhist temple. It was announced by Dr. S. Fukuda, temporary chairman.

There is no limitation of any kind for membership in the group, but boys and girls who are just beginning to take up the game or who desire to do so are especially welcome. The organization is expected to have social functions as well as a complete sports program.

As the first step in the plan to aid beginners, lessons will be given from 7 a.m. each Sunday beginning July 25 at the Garfield courts, weather permitting. Veteran players including Dr. Fukuda and G. K. Kurata will be on hand to give instructions. It is not necessary to be a club member to participate.

At the initial meeting of tennis enthusiasts, plans were discussed to stage tournaments for the various classifications of players. Definite decisions are expected to be made along this line at the Monday July 26 meeting. Officers also will be elected, it was understood.

Staging a smashing four-run rally in the last half of the fifth, the Lotus Ashuras tied Lotus Mercury, 9 to 9, on a sloppy slippery South Park field.

In the uprising, which fell a run short of victory, the Ashuras countered on Paul Minato, Shig Akada, Tak Shimizu and Iso Nishimura's blows.

The no-contest hitting stars were Gaylord Iwasaki, Mits Kawachi and Blotz Suyama for Mercury, and Iso Nishimura, Ben Deguchi and Shig Akada for Ashuras.

LOTUS MERCURY (9)

| AB | R | H |
|-------------------|---|-----|
| Iwasaki, 3b | 4 | 1 2 |
| Kawachi, rf | 3 | 2 3 |
| Suyama, ss | 3 | 3 2 |
| Yoshitake, 2b | 3 | 2 1 |
| T. Deguchi, c, lf | 1 | 0 1 |
| Nakahara, cf | 2 | 1 1 |
| Terada, p | 3 | 0 0 |
| Edamura, lb | 2 | 0 1 |
| Hara, lf | 1 | 0 0 |
| K. Aoyama, rf | 0 | 0 0 |
| S. Shimizu, c | 0 | 0 0 |

LOTUS ASHURAS (9)

| AB | R | H |
|----------------------|---|-----|
| Mamiya, rf | 2 | 2 0 |
| T. Shimizu, 2b | 2 | 2 1 |
| I. Nishimura, ss, p | 3 | 1 2 |
| B. Deguchi, cf | 4 | 1 2 |
| Suto, lf | 2 | 0 0 |
| G. Aoyama, 3b, p, ss | 2 | 1 0 |
| Kawada, lb | 2 | 0 0 |
| Minato, c | 3 | 1 1 |
| Akada, p, 3b | 3 | 1 2 |
| Goto, lb | 1 | 0 0 |

The running score follows:
R H E
Lotus Mercury 520 20-9 11 1
Lotus Ashuras 400 14-9 8 5
Batteries: Terada and T. Deguchi, S. Shimizu, Akada, G. Aoyama, I. Nishimura** and Minato. *In for Akada in first. **In for Aoyama in fifth.

AL MAR'S
12th Ave. Food Market
CA. 0700 Free Delivery
118 12th Ave. Seattle

Motorola Car Radio
Complete Automotive Repairing
Lubrication
Gas—Oil—Accessories
New Tires — New Batteries
7TH AVENUE SERVICE
701 Jackson St. EL. 9853 Seattle 4, Wash.
Charles C. Toahl — Ted K. Imanaka — George Koyama

Complete Tennis Supplies
MacGregor, Spalding, Wright & Ditson, and Wilson equipment
Everything from shoes to sun-visors
Friendly H A B'S
Complete Sporting Goods
EL. 7038 815 Jackson St.

LEAP THROUGH WASHDAY WITH THIS NEW EASY SPINDRIER!



COMPARE SPEED Does a week's wash in less than an hour! One tub washes while the other rinses and spins damp-dry. Removes up to 25% more water... clothes dry faster.

COMPARE CONVENIENCE No slow feeding of pieces through a wringer. No set tubs needed... you rinse right in the spinner basket.

COMPARE SAVINGS Easy gives you more for your money. Saves cleaning bills... does "washable" drapes at home! See it in action today!

Model 18SS46 179.95
Model 19SS47 189.95

Easy Terms
Hikida Furniture
818-20 Jackson St. ELIot 2935
Res. MINor 0148

Frank's Jewelry
517 Jackson St.
Seattle, Wash. EL. 8377
FRANK Y. KIYAMOTO

Uji Barber Shop
814 6th Ave. S.
EL. 8846

Maneki
Sukiyaki
Tempura
Private Parties
MAIn 9723 304 6th Ave. So.

FRANK'S NISEI BARBER SHOP
Service to Satisfy with Modern Equipment open till 9 p.m.
Frank Tanigawa
1918 Yesler Way

FRANK HATTORI REALTY
BUS. MAIn 6513 RES. MINor 0934
109 Jackson Bldg. Seattle, Wash. 318 6th Ave. S.

SUSUMI-BUTTERWORTH FUNERAL SERVICE
670 Jackson St.
ELIot 0558

Chick's Ice Creamery
A Nisei Rendezvous
625 Jackson St. EL. 9136

DENTISTS
DR. S. FUKUDA
105 Jackson Bldg., MA. 8840
DR. K. HARADA
806 12th Ave. S. EA. 8448
DR. S. HIGASHIDA
1017 Jackson St. EA. 1000
DR. S. F. KANEMORI
670 Jackson St., MA. 9200
DR. H. MITSUMORI
114 Jackson Bldg., MA. 0589

TAKANO STUDIO
HENRY Y. MIYAKE
668 Jackson St.
Seattle 4, Wash.
Phone MA. 8186
CA. 8952

N. P. Hotel
306 6th Ave. S.
Y. FUJII
Phone MAIn 3952

Dearborn CASH GROCERY
Mits Abe
Yoshito "Salty" Mizuta
We Deliver
725 Dearborn St. ELIot 9169

STANLEY Y. KARIKOMI
District Representative
The **MANUFACTURERS Insurance LIFE Company**
Branch Office Seattle 1 531-6 Skinner Bldg. Washington
Telephone: ELIot 3993
Residence: OAPital 8608

Richard's Jewelry
Expert Watch Repair
—Official N. P. Railroad Time Inspector—
Dr. Duncan Tsuneishi
Optometrist
Seattle 4, Wash. SE. 9131
216 4th Ave. So.

Better Fit MEANS Better Posture

WEATHER-BIRD Arch Helper SHOES

Properly fitting shoes fail to give proper bodily support. Spare your child future footills... give him the advantages of these scientifically designed shoes.



8 1/2 to 12 \$5.25
12 1/2 to 3 \$5.65

We check our fitting with X-Ray.

Urakawa's Toktow Shoe Co.
526 Jackson St. Seattle, Wash. SEneca 7076

The Social Whirl

OBSERVES BIRTHDAY ... A birthday party for two-year-old Russel Nishitani was given last Sunday by his parents, Mr. and Mrs. Woodrow Nishitani in their home.

Present besides the honored guest were Colin and Bob by Fukano, Marilyn Kashiwagi, Jina Gomes, Ellen Nishitani and Andrea Nishitani.

TEA PARTY ... "Hall and Farewell" was the theme of a tea given by the young women's group of the Japanese Congregational church in their new "Upper Room" last Thursday. The honored guests were Dr. Aiko Kodama, and the Mesdames Lily Fujiye, May Higa and Rose Okabe.

Mrs. Lily Fujiye is returning to Chicago with her daughter, Leslie, after a month's visit with her parents, Mr. and Mrs. K. Kawaguchi; Dr. Aiko Kodama just returned from Japan, having been with the Occupational Forces as a resident doctor at the St. Lukes Hospital in Tokyo; Mrs. May Higa, recently of Cincinnati, Ohio, is planning to make her permanent home here; and Mrs. Rose Okabe of Chicago, is visiting her parents, Mr. and Mrs. S. Soyajima, with her son, Richard.

Members and friends welcoming the guests were the Mesdames George Yano, Hatsuye Iwago, Martha Kawaguchi, Tomi Suyama, Kimi Ota, Nobu Naito, the Misses

Marjory Ota, Sally Shimanaka, Nobuko Nakamura, Meri Toda, Starr Urakawa, Martha Ikeda, May Miyamoto, and the Rev. Ai Chi Tsai and his daughter, Bi Hoa.

GET TOGETHER ... To renew acquaintances, a group of young women who were formerly associated with the Fuyo Kai, pre-war Japanese women's organization on the University of Washington campus, got together for a party last Thursday in the home of Mrs. Nobu Suzuki.

Besides Mrs. Suzuki, others present were the Mesdames Aiko Yamaguchi, Mitsu Fukui, Martha Nakao, Yuki Fujii, Bernadette Kamimachi, Merry Mimbu, Michiko Miyamoto, May Higa, Kaz Tatsuda, Suzy Fukuyama, Tama Tokuda, May Yano, Grace Tatsumi, Lily Fujii, Michi Kano, Hana Masuda, Tama Murotani, Minnie Itoi, Tsune Makino, Billie Yoshioka and Kiyo Sakahara, all of Seattle.

The others from Seattle were the Misses Margie Ota and Ruth Kazama.

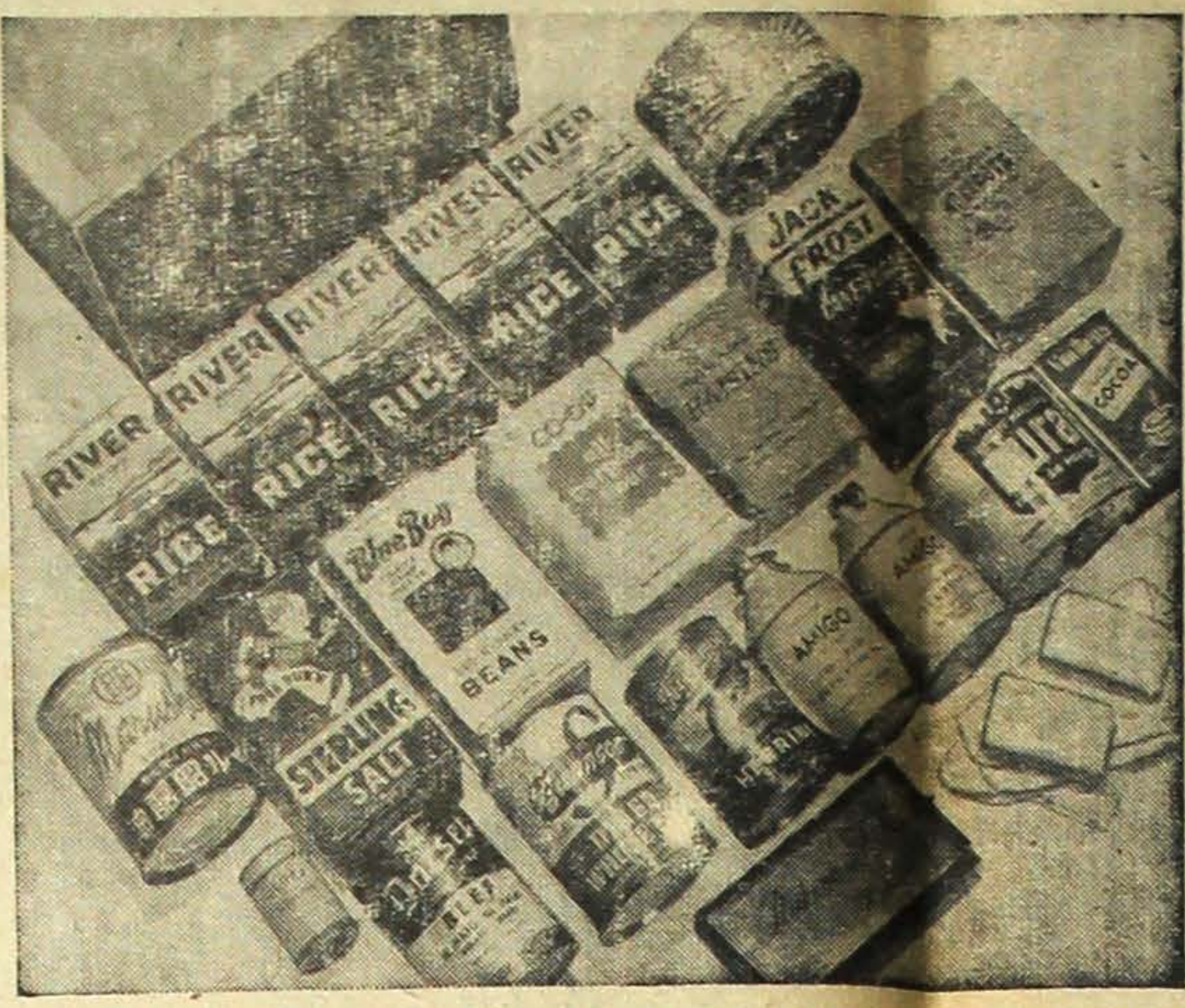
Out-of-towners in the party were Mrs. Kikue Masuda of Chicago, Ill., Mrs. Tai Ike of Baltimore, Md., Miss Chizu Okazaki of San Francisco, Calif., and Miss Stella Yorozu of Chicago, Ill.

MISCELLANEOUS SHOWER

A surprise miscellaneous shower was given for Miss Taeko Kurimura, bride-elect of Mr. Tom Moriguchi of Minneapolis, by Mrs. Sei Fujiwara and May Dady in the latter's home last Sunday.

Those present besides the honored guest and the hostesses were Mesdames Mike Matsudaira and Terry Kurimura, and the Misses Amy Hidaka, Rose Yatagai, Taeko Kihara, Carol and Ann Dady, Kimitko Nagamatsu and Kay Fujikado. Mitsuho Murao of Chicago Ill., was unable to attend but sent a gift.

Miss Kurimura will be married to Mr. Moriguchi on Saturday, August 14, in the Japanese Baptist Church here.



The CARE Japanese food package has been designed specifically to meet the needs and the food tastes of the people of Japan. The contents of the package which weighs 29 pounds gross, and contains 23 pounds net of food are:

- Rice 5 pounds
- Flour 2 pounds
- Kidney Beans 1 pound
- Miso 2 pounds
- Shoyu 1 pint
- Vegetable Oil 24 ounces
- Beef in natural juices 15 ounces

- Canned Fish 15 ounces
 - Apricots 1 pound
 - Raisins 1 pound
 - Egg powder 8 ounces
 - Cocoa 8 ounces
 - Milk Powder 1 pound
 - Sugar 2 pounds
 - Salt 1 1/4 pounds
 - Soap 6 ounces
 - Soup Concentrate 1 1/4 ounces
 - Washcloth 1
 - Chocolate 8 ounces
- Parcels may be sent to relatives, friends or members of designated groups. All packages will enter Japan ration and duty-free.

Machida Named Superintendent

The Rev. Thomas J. Machida of the Seattle Japanese Methodist church was appointed Japanese superintendent for Washington and Oregon at the annual conference held recently in San Francisco. Bishop James C. Baker, president of the Council of Bishops, presided at that gathering.

General superintendent for the Pacific Japanese conference will be Dr. Channing A. Richardson who succeeds Dr. Frank Herron Smith, retired.

Bishop Donald H. Tippet, D.D. and LL D. will govern the Japanese Provisional conference of the Methodist church, it was learned today. Bishop Tippet, one of three new bishops elected at the recent Jurisdictional Conference held here, will preside over the San Francisco area.

Dialogue in Hell

(Continued from Page 2)
GOEBBELS: (puffing up) I have something further to report, Mein Fuehrer. I'm sure it will please you.

HITLER: Do go on.
GOEBBELS: Well, Fuehrer, this ban, this Canadian ghetto, was continued at the request of the British Columbia Liberal Party. Our agents are quite definite on that.

HITLER: Liberal! (roars with laughter) What a splendid joke!
GOEBBELS: Good men. Good men all. And highly respected in the province of British Columbia. Why one of their leaders—now a senator—swore that he would leave public life if the Japs returned to that coastal strip.

HITLER: Capital! A man after my own heart. Truly a real senator!
GOEBBELS: A Scotsman by the way. Name of Mackenzie.

HITLER: Hoot mon!
GOEBBELS: Ja, Mein Fuehrer, it is just as if you were there in person. A helpless minority used beautifully for political and economic purposes. A forthright stand against a race of a different color or a creed. Just as in our better days. And just think: a whole year ban on them!

HITLER: Ach, Doctor, how well you know humanity. Almost as well as I. But never fear, Herr Goebbels. We are far from dead so long as we have our friends up there.

GOEBBELS: Hoot mon, Mein Fuehrer.

Red Cross Home Nursing Course To Start Here on August 2

The August series of free Red Cross home nursing courses are scheduled to start Monday, August 2, according to Mrs. Clyde Holcomb, volunteer home nursing chairman for the Seattle-King County Red Cross chapter.

Taught by graduate nurses, and meeting for two hour sessions on Mondays, Wednesdays and Fridays for two weeks, both care of the sick and mother and baby care will be offered.

Classes in care of the sick are scheduled for 10 a.m. to 12 noon and 7:30 to 9:30 p.m.

Mother and baby care classes will be held from 1 to 3 p.m. and from 7:30 to 9:30 p.m., with the evening classes again open to both men and women.

All classes will be held in Red

Cross headquarters, 905 Second Avenue Building, where registration is now being taken. Additional information or registration may be obtained by calling EL 2800.

Good-breeding shows itself most, where to an ordinary eye it appears the least.—Addison.

Shanty Inn Cafe

"WHERE FRIENDS MEET"
110 12th Ave. CA. 9677

Auto, Fire, Liability INSURANCE

John Ogishima George Yuasa
318-6th Ave. So. So. 311 Conklin
MAYN 5150 S. Spokane 1148
Seattle, Wash. Spokane, Wash.

Church Notices

BAPTIST
9:45 a.m.—Sunday School.
10 a.m.—Issei worship service.
11:15 a.m.—Nisei worship service. Lightlighters in charge.
7:30 p.m.—BYF.
Okazaki classes from 8 to 9 p.m. on Mondays.

BUDDHIST
10:00 a.m.—Kindergarten Class.
11:00 a.m.—Young People Service.
CONGREGATIONAL
10 a.m.—Sunday School for nursery, beginners, kindergarten, primary, junior and intermediate.
10 a.m.—Issei worship service.
11 a.m.—Nisei worship service.

MARYKNOLL
9 a.m. and 10:30 a.m.—Low Mass.
Benediction will be held following 10:30 Mass.

METHODIST
10 a.m.—Sunday Church School.
Helen May Smith, superintendent.
10 a.m.—Japanese Service.
11 a.m.—Nisei Service.

HOLY COMMUNION
Holy Communion will be observed at 11 a.m. this Sunday, July 25, in the Japanese Methodist church on Washington St. Those who desire to participate are asked to attend church at that time.

NICHIREN BUDDHIST CHURCH
10 a.m.—Kindergarten children and juniors service.
11 a.m.—Young people's service in English.
7 p.m.—Japanese Service.

PRESBYTERIAN
9:15 to 9:30 a.m.—Teacher's pre-prayer service.
9:30 to 10:45 a.m.—Sunday school for beginners, primaries, juniors and intermediates.

ST. PETER'S
9 a.m.—Issei Holy Communion.
Rev. G. Shoji
11 a.m.—Sunday School, Miss Gladys Gray.
11 a.m.—Nisei Worship Service.
7:30 p.m.—Fri-night YPF Meeting.

12th Ave. Service Station
GAS - OIL - MOTOR REPAIR
MIN and JACK KOGA
150 12th Ave. CA. 5854

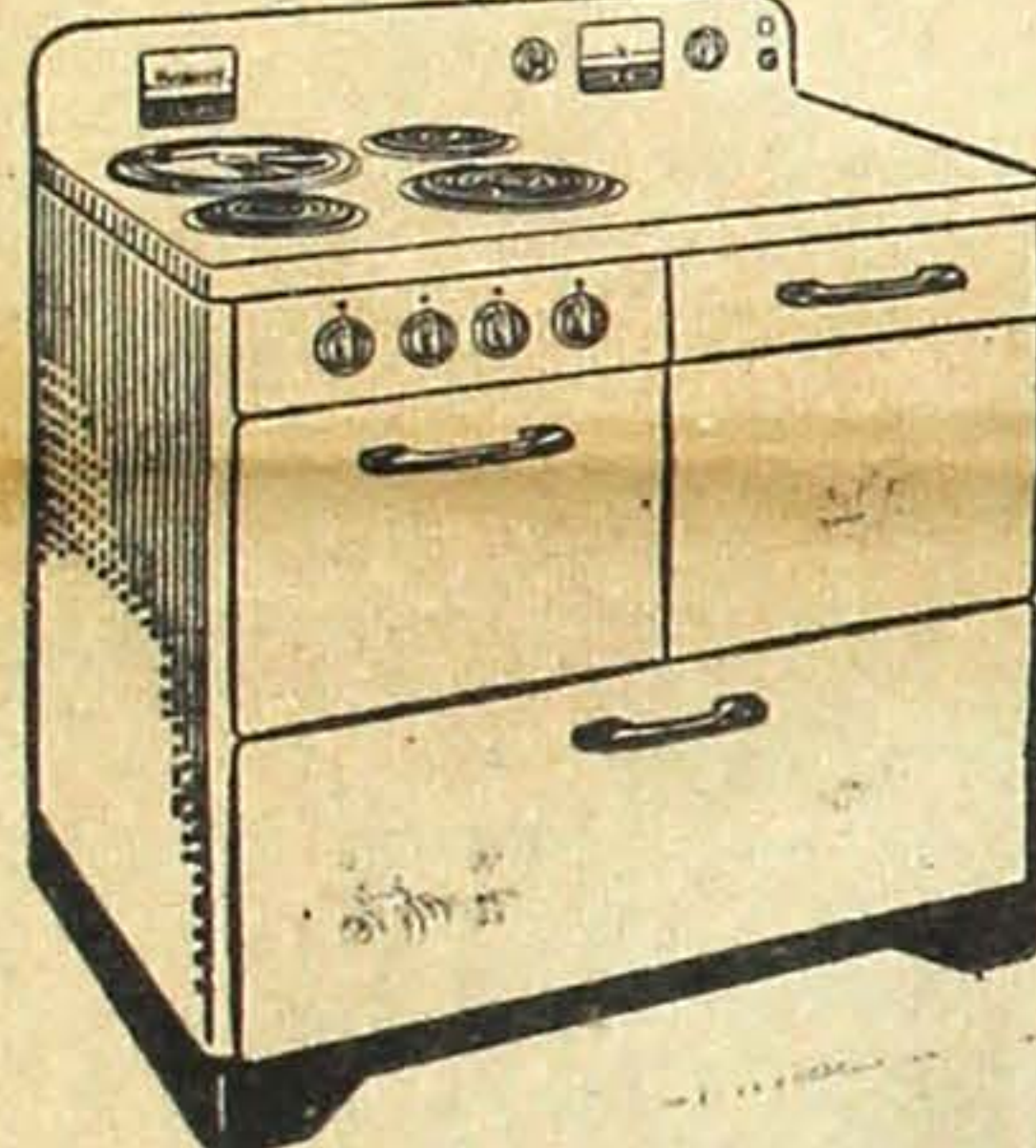
IKEDA & CO.
WHOLESALE GROCERS
SEneca 2196
600 6th Ave. S.
Seattle 4, Wash.

Main Shokudo
All Kinds of Japanese Foods
505 Main St. SE. 9429

INSURANCE
FRANK Y. OKADA
Automobile-Fire-Burglary
Window Glass-Public Liability
Health and Accident
502 Main St. SE. 0781

TOKUDA DRUG
1724 Yesler **GEORGE TOKUDA**, Prop. CA. 3611
Prescriptions carefully compounded by
REGISTERED PHARMACISTS
"Favorite Nisei Fountain"
SERVING FAMOUS WELCOME GUEST ICE CREAM
DRUGS MAGAZINES GREETING CARDS
SUNDRIES

HOTPOINT'S
1948
ECONOMY
\$189.95
Terms



DIMENSIONS
Floor Space—37 to 25 inches.
Height to Backsplash—46 inches (including lamp accessory).
Depth—26 1/2 inches.
Cooking Top—36 inches from floor.

FEATURES
New Calrod Surface Units
Oven Signal Light
Oversize Automatic Oven
Simplified Oven Temperature Controls
New Thrift Cooker
Porcelain Enamel Finish Inside and Out
Indicating Switch Knobs

TASHIRO HARDWARE CO.
109-113 Prefontaine Pl.
Seattle, Wash.
MA. 8452

Ralph S. Ochi Studio,
PHOTOGRAPHERS
1325 E. Spruce St.
Phone EAst 0903
Seattle 22, Wash.

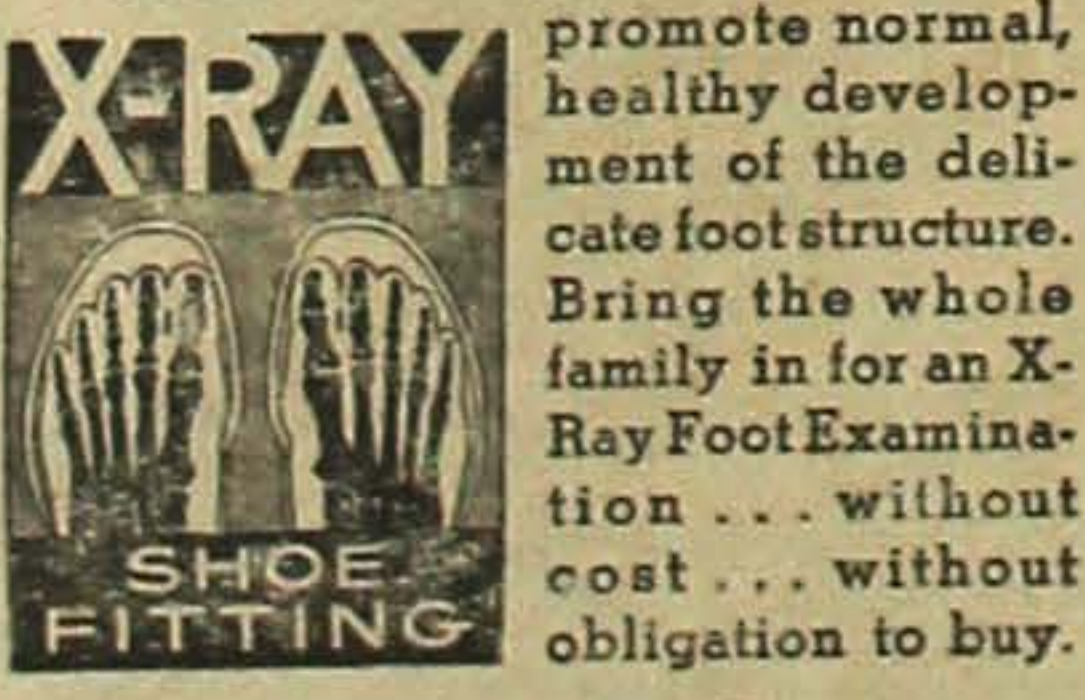
WHEN YOU WANT
*DIAMONDS
*WATCHES
*SILVERWARE
IT WILL PAY YOU
To Call
SAIBO FUJII
Bus. MA. 7670 Res. CA. 2517
Personal Representative of

Friedlander & Sons
5TH AT PIKE
WHERE YOU GET
MORE VALUE FOR
YOUR MONEY
CONVENIENT CREDIT
NO INTEREST
A YEAR TO PAY

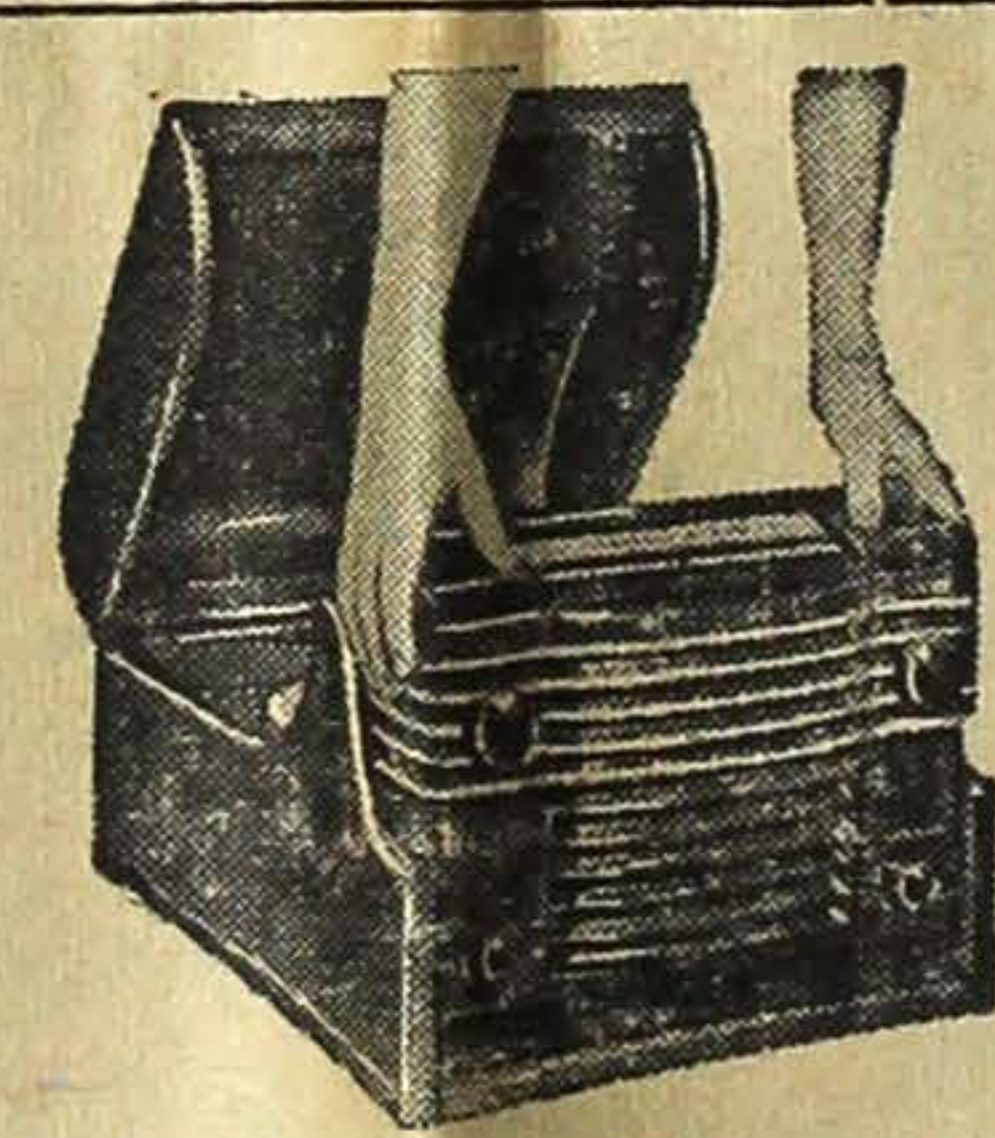
!SALE!
WALLPAPER
More Than
50% off
Come in and see them
★
JACKSON FURNITURE CO.
650 Jackson St. SEneca 0485
Seattle, Wash.

On the Path
to
Lifetime Foot Health

• Foot ailments and injuries caused by misfitted shoes in early childhood can seldom be corrected in later years. Insure your child's future foot-health and comfort by using our X-Ray Fitting Service. This modern fitting aid permits you to see that your child's shoes fit correctly... that plant bones and tender muscles are not crowded and distorted... that your child's shoes promote normal, healthy development of the delicate foot structure. Bring the whole family in for an X-Ray Foot Examination... without cost... without obligation to buy.



Tom Urakawa's TOKTOW SHOE STORE
826 Jackson St.
Seattle, Wash.



THE REVOLUTIONARY
New
WESTINGHOUSE
REFRIGERATOR
SPECIAL \$74.50



WESTINGHOUSE
NORGE
WESTINGHOUSE MADE
"Automatic Washer"
\$50.00 Down A Year To Pay
5 Years Guarantee
Free Washing To Prove
\$134.50

Refrigerators
WESTINGHOUSE \$229.00 UP
NORGE 197.00 UP

OPENING SPECIAL SALE

Westinghouse Radio-Combination Was \$111.00 Special \$ 74.50 Up
Westinghouse Radio-Combination Console Was \$264.00 Special 174.50
Westinghouse Battery Set 19.00 Up
Westinghouse Electric Range 174.50
Steam Iron Famous Steamomatic 14.00
Wiss Pinking Shears 7.50 UP

It's here! Come in and see it!
THE NEW ROYAL PORTABLE...
with FINGER FORM KEYS!
designed to cradle your finger-tips!
Portables
Royal Typewriter Smith-Corona

\$10.00 Down A Year To Pay
WESTINGHOUSE \$229.00 UP
NORGE 197.00 UP

WESTINGHOUSE MADE "Automatic Washer"
\$50.00 Down A Year To Pay
5 Years Guarantee
Free Washing To Prove
\$134.50

"If It's Appliances, We Have It."
CHIHARA APPLIANCE CO.
CHIHARA JEWELRY CO.
612-614 Jackson St.
Phone: Main 2275



International Realty
Real Estate and Insurance
Business Opportunities
Notary Public
James M. Matsuoka
659 Jackson St. MA. 1522
Seattle 4, Wash.

No. 500 NORTH COAST
Importing Co. Supply Co.
515 Maynard W. 27 Main Ave.
Seattle 4, Wash. Spokane 8, Wash.
Tel. EL. 4833 Tel. MA. 3715

DISTRIBUTORS
SMITH 500 Blue Rose Rice
DAIKOKU Brand Rice
MARUSHO Shoyu
KOKUSUI Shoyu
TAKA Shoyu
SHIRAYUKI Ajinomoto
HIME Udon

TRADE MARK REGISTERED
RICE MILL CO.
DEWITT, ARK.
COATED RICE
COATED WITH
GLUCOSE AND TALC.
REMOVE BY WASHING
BEFORE USING
100 LBS. NET
4.50