



The Northwest Times

U. S. POSTAGE
Sec. 562, P. L. & E.
PAID
Seattle, Wash.
Permit No. 5164

VOL. 2, NO. 88

304 Main Street

SEATTLE 4, WASHINGTON

Phone: SEneca 5594

SATURDAY, Oct. 23, 1948

KAWASAKI OFF TO JAPAN AS LARA WORKER

PHILADELPHIA, Pa., Oct. 23—Corky Tokuyoshi Kawasaki, administrative assistant in the Foreign Service Section of the American Friends Service Committee, will sail this Sunday, Oct. 25, from San Francisco for Japan.

Kawasaki, who received his early education in Japan, attended the University of Washington at Seattle where he resided for many years. He was engaged in foreign export and food business prior to the war. While in various relocation centers he was active in the cooperative movement and served as executive secretary of the Centers Business Enterprises. Later he was executive director of the Chicago Resettlers Committee, an organization which helped persons of Japanese ancestry who had been removed to the Chicago area from relocation centers. In May, 1948, Kawasaki joined the staff of the American Friends Service Committee, as well as Licensed Agencies for Relief in Asia.

Kawasaki will leave on an army cargo boat which will carry a load of goats, a part of the "Heifer for Relief" project sponsored by the Brethren Service Committee, to be distributed through the cooperation of the Supreme Command for the Allied Powers (SCAP). While in Japan on this program he will visit Honshu, Shikoku, Kyushu and Hokkaido for a two-month survey of the work and distribution methods of the Licensed Agencies for Relief in Asia.

His wife and three children reside at 4310 South Berkeley Avenue, Chicago, Illinois. His mother, Mrs. Hana Kawasaki, also lives in Chicago.

Licensed Agencies for Relief in Asia is the overall relief agency through which all relief in Japan is distributed. The American Friends Service Committee is a member of LARA. In addition to its work in Japan, the Service Committee carries on relief and rehabilitation work in Austria, China, Finland, France, Germany, Hungary, India, Italy, Pakistan, Poland and Spain.

The scholar, without good-breeding, is a pedant; the philosopher, a cynic; the soldier, a brute; and every man disagreeable.—Chesterfield.

New NORGE Home Heater



SAVES FUEL

Norge's exclusive feature, the L-shaped Heat Exchanger, gives you up to 40% more heating surface.

NO FUEL DUST

Norge's exclusive "Whirlator" burns away every drop of fuel oil in a clean flame to save you work and time, as well as cash.

ECONOMICAL

Saves fuel up to 25% because of automatic air pump.

\$75.00 up
\$5 to \$20 allowance for your old stove.

See this New Norge Heater

Chihara Jewelry
Chihara Appliance

612-614 Jackson St.
MAIN 2275



JAPANESE-AMERICAN CHILDREN SEND CARE AID TO OCCUPATION BABIES IN YOKOHAMA. — Eileen Nagatomo, administrative assistant, Chicago Resettlers Committee, 1110 N. La Salle Street, and her niece and nephew, Karen and Allen, examine CARE package children will send to Japanese-American occupation babies at Our Lady of Lourdes Orphanage in Yokohama, Japan.

Wallace Calls Warren 'Liberal'; Raps 'Wall Street' Military Men

NEW YORK, N. Y., Oct. 23 (NWC Release)—Henry A. Wallace, Progressive Party candidate for President, this week scored Governor Earl Warren of California as an "original liberal" and charged that original American plans for democratizing Japan were being betrayed by "Wall Street-military men in our government."

Wallace's opinions on Japan and Warren, Republican vice-presidential candidate, were made known in a campaign pamphlet issued by the New York Nisei for Wallace Committee for national distribution among Japanese Americans.

Entitled "Mr. Wallace, the Nisei Would Like to Know..." the 15-page Nisei pamphlet presents a series of Wallace's answers to questions put to him by the Nisei group. The publication, which may be the first political campaign pamphlet ever printed by Nisei, also presents excerpts from the Progressive Party platform and includes a picture of Wallace being greeted by members of the Los Angeles Nisei for Wallace Committee.

The Progressive candidate doubts Warren's liberalism in the pamphlet by accusing the California Governor of failing to demand repeal of the Alien Land Law and not taking a "positive stand" on racial bars to immigration and naturalization.

Wallace also quotes Warren as saying there was "more potential danger" among the Nisei than the Issei at the time the Californian was demanding the wartime evacuation of West Coast Japanese Americans.

The question of "assimilation," long a moot theory among Nisei, gets a working over by the Progressive standard-bearer.

Noting that one of the Hearst newspapers in New York City had attacked the Progressive Party as one made up of "hyphenated Americans," Wallace said his party wants America to "retain the significant and beautiful in all cultures to enrich our existing American civilization."

"If the young people of, say, the Japanese immigrants, desire to study their own language, to go to Buddhist churches,

to learn Japanese art, to dance and sing their folk music, to get together with their own kind—we see nothing wrong in all this," he said.

The real danger, Wallace declares, is in insisting that the children of immigrants become "assimilated" through renunciation of their cultural traditions and wholesale adoption of "the standardized American culture which is Anglo-Saxon with a Hollywood trademark."

On Japan, the Progressive candidate said the land reforms mapped in the original V-J directives of the State Department were being "evaded and sabotaged" by the combination of Wall Street and military representatives conducting U.S. foreign policy.

If Japan is "thoroughly democratized" through enforcement of the original directives, she should be admitted into the United Nations, and will deserve "economic aid the American people can extend to achieve abundance for the Japanese people," Wallace said.

The Nisei Wallaceites who authored the pamphlet preface it with the comment that "we Nisei in the Progressive Party" are not "taken in" by the campaign of slander against Henry Wallace because the hysteria of the campaign is similar to that suffered by "those of us who went through the evacuation."

They conclude by saying Wallace and the Progressive Party are "taking plenty of punishment" in order to convince America that "newer and more horrible Hiroshimas" need not be inevitable.

TOKYO WAR CRIMES VERDICT EXPECTED ABOUT NOV. 1

TOKYO, Oct. 23—Long job of setting up the verdicts in the Tokyo war crimes is nearing completion, according to an International News Service dispatch.

Japan's "Pearl Harbor Premier" Hideki Tojo and 24 other former Japanese leaders may start hearing their fates on Nov. 1.

The Community Chest campaign for 1949 is the first to receive the approval of the Public Appeals Board.

REMEMBER—SAVE THOSE BROKEN TOYS

Don't throw away that broken scooter, that battered toy auto, or those roller skates that won't work! Save them—they can be repaired and will make some child extremely happy at Christmas.

A program to collect worn out and cast off toys was agreed upon at the meeting of the recreation committee of the Jackson St. Community Council last Thursday, Oct. 21. H. G. Mooney, who with his father makes a hobby of repairing such toys, has offered to fix up all that the Council can supply. The toys will be returned to this area to be distributed to selected families where it is known that there will not otherwise be much under the tree for the youngsters.

Members of the committee have volunteered to contact lodges, churches, P.T.A., Boy Scouts, veterans' organizations, and stores in the neighborhood to secure the assistance of their members in the toy collection plan. It is hoped that the stores, churches, and schools will act as depots where toys may be brought for pick-up.

The drive will end on Saturday, Nov. 15. Mooney has invited any men who like to work with tools to assist him in this volunteer effort. Information on where toys may be left and how to arrange with Mooney in assisting in the program may be obtained by calling the Jackson St. Community Council, SE 3073. A list of collection depots will appear in this newspaper.

CERTIFICATES FOR MEDALS IN WAR TO BE ISSUED

WASHINGTON, D. C., Oct. 23—Maj. Gen. Edward F. Witsell, the Adjutant General, Dept. of the Army, this week advised all holders of World War II military decorations that they may obtain certificates attesting to the awards by writing directly to him.

Medal winners will receive certificates of the diploma type, each bearing a replica of the decoration for which it is granted.

Their requests should be addressed to The Adjutant General, Dept. of the Army, Washington 25, D. C.

Ban Prohibiting Oriental Citizens In Hawaii to Enter U. S. Lifted

WASHINGTON, D. C., Oct. 23—The 40-year ban prohibiting Japanese and Korean citizens living in Hawaii from entering the United States has been lifted by presidential executive order.

The order becomes effective immediately.

The original order preventing Japanese and Korean aliens from entering the United States via Hawaii was issued by Pres. Theodore Roosevelt on March 14, 1907.

This applied to certain aliens who had been admitted to Hawaii under labor contract visas. Thus, their original passports "limited" them to residence in Hawaii.

Behind this barrier was the rationalization that a flow of Japanese laborers from Hawaii to the mainland might have an adverse effect upon the labor market.

In issuing his order, President Truman pointed out that "the number of Japanese or Korean citizens thus prohibited from entering the continental United States is so small, and the age of such persons is so advanced, that their entry into the United States would no longer be a detriment to labor conditions."

Action to achieve revocation of the "limited passport" order was instituted in the fall of 1947 by the Japanese-American Citizens' League, Anti-Discrimination Committee Director, Mike M. Masaoka.

It was assumed the presidential order would completely clarify the status of four persons subject to deportation from the mainland to Hawaii. The four are: Shinkichi Shimizu, Guadalupe, Calif.; Mrs. Haru Toyama, Del Rey, Calif.; and Mr. and Mrs. Juro Muranaka, San Fernando, Calif.

The four were ordered deported by the Justice Department under terms of the original executive order on "limited passports."

The execution of the order, however, was held up pending action on special legislation introduced by Del. Joseph R. Farrington (R. Hawaii). The new presidential order will, of course, supersede the neces-

Satira Free Again



HAVANA — Patricia (Satira) Schmidt recently made a radio transcript after receiving pardon from 15-year sentence for slaying John Lester Mee aboard his yacht here. A Chicago night club owner said he was trying to sign Miss Schmidt for a strip-tease dance on a double bill with the widow of the man she killed.

Chicago Sets \$12,000 Goal

CHICAGO, Ill., Oct. 23 — With \$12,000.00 as its goal for 1948, the Chicago ADC fund drive began this week, according to the Midwest Regional Office.

Tate Matsunaga, chairman for the ADC, announced that the city would be divided into thirty or more sections. More than 150 Issei and Nisei will form soliciting teams to cover these areas in a house-to-house drive to be completed by the end of November. An appeal brochure is being mailed to every known resident in the Japanese community.

The drive, explained Chairman Matsunaga, is part of a nationwide effort to finance the JACL-ADC's legislative program to secure the passage of the naturalization bill in the 81st Congress.

MIMBU, SAKAHARA TO SPEAK ON PROBLEMS RELATING TO CLAIMS FORMS ON OCT. 27

Seattle's Americans of Japanese ancestry will get a first-hand report on what Edward J. Ennis, JACL-ADC legal counsel on evacuation claims, and Mike Masaoka, national JACL-ADC legislative director, have in mind in regard to the evacuation claims next week.

Midwest Weighs Claims Plans

CHICAGO, Ill., Oct. 23—Delegates from the seven member chapters of the JACL Midwest District Council met in Chicago last week to discuss plans to provide evacuation claims forms and minimum stenographic, informational and other services to their respective communities, reported the Midwest Regional Office this week.

Attending the MDC meeting were Charles Tatsuda Twin cities (Minn.) UCL; Peter Fujio, Detroit; Frank Okada, Nami Shio, Elva Shinozaki and Satoshi Nakahira, Milwaukee; George Chida and Tak Toyota, Cleveland; Tom Kanno, Cincinnati; Henry Tani, St. Louis; Shig Wakamatsu, Wiley Higuchi, Mrs. T. T. Yatabe, Dr. and Mrs. R. M. Sakada and Mike Hagiwara, Chicago. Visiting from Madison, Wisconsin, was attorney Robert Dewa.

National board members present were Dr. T. T. Yatabe, Henry Tani, Mari Sabusawa and Noboru Honda, as well as regional representative Tats Kushiida.

Edward J. Ennis, JACL legal counsel on evacuation claims, and Mike Masaoka, national legislative director of JACL-ADC, outlined the claims services available to the chapters from the Washington D. C. office.

With his recent election as national first vice president, Henry Tani resigned as chairman of the MDC. Noboru Honda, MDC first vice chairman, was elected to succeed Tani, and thus, as a district council chairman, became the newest member of the JACL national board.

No business can be any better than the community in which it lives. Give—Give Enough to the Seattle-King County Community Chest this year. We must raise \$1,737,767 between September 30 and October 18, to maintain 40 vital health and welfare services in 1949.

SUN	MON	TUES	WED	THURS	FRI	SAT
Nisei Calendar						

OCTOBER

29—Japanese Congregational Church young people's Halloween party starting at 8:30 p.m.

29—Pre-Halloween Invitational dance will be sponsored by Main Drug Crows from 9 p.m. to 12:30 a.m. in Seattle Buddhist auditorium.

30—BYF Halloween party in Baptist Nursery School from 7:30 p.m. Come dressed in jeans and old clothes. Refreshments, games, entertainment and folk dancing will be featured.

30—Lotus Starlets to sponsor "Harvest Moonball" for all teenagers from 8 to 12 p.m. in Buddhist Auditorium.

NOVEMBER
10—Pre-Armistice Skating Party at Rollerland Rink from 10:30 p.m. to 12:30 a.m. Sponsored by Greenhouse Basketball Team.

13—St. Peter's Y.P.F. to sponsor dance, "Autumn Nocturne" from 9 p.m. to 12 midnight in St. Peter's hall.

13—Stop 'n Shop bowling team's splash party in YMCA.

20—Stag-Stageette dance in Buddhist Auditorium from 8:30 p.m. co-sponsored by U. W. Coeds and South End Merchants.

24—Thanksgiving Eve sports dance by Nisei Veterans Committee in Palladium ballroom.

DECEMBER

11—Baptist Youth Fellowship of Japanese Baptist church to sponsor ice-skating party in the Civic Ice Arena from 10:30 p.m. to 12:30 a.m.

24—Christmas Eve dance at Bruce Crane Ballroom sponsored by Rissio Club.

31—South End Merchants to sponsor its annual New Year's Eve dance.

Classified Ads

ADDING MACHINES for sale — New and used. All makes. Call Mac Kaneko, CA. 8363, E.W. Hall representative.

CARSON'S HAIRDRESSING COLLEGE has several openings for students. Apply in person. 206 People's Bldg., MA. 2394.

TYPEWRITERS for sale — New portables — Guaranteed used typewriters. Call Mac Kaneko CA. 8363, E.W. Hall representative.

Watch for the Opening Day!



Powder Box Beauty Salon

Kikue Hagimori
526 King St.

Mary Tsuchikawa
Seattle, Wash.

12 Beautiful Sanctioned Alleys



TAKE ADVANTAGE

30c per game until 6 P.M.

HOLIDAYS and SATURDAYS as well as week days.

MAIN BOWLING ALLEY

The MAIN Place to Bowl!

306 Main St.

MAin 9399

The Northwest Times

THE ONLY ALL-ENGLISH NISEI NEWSPAPER
IN THE PACIFIC NORTHWEST

Established January 1, 1947

Published every Wednesday and Saturday of each week.
Editorial offices at 304 Main St., Seattle 4, Wash. Phone
SEneca 5594. Office hours: 9 a.m. to 6 p.m. daily except
Sundays and holidays.

Editor & Publisher Budd Fukel
Associate Editor Hideo Hoshida
Art Editor Tom Tsutakawa

Special Representatives	Subscription Rates
SPOKANE—Norio Wakamatsu	One month \$.75
W. 325 Trent Ave., Spokane, Wash.	Six months 4.25
Bus. Main 6712 Res. L-2382	One Year 8.00
PORTLAND—Tom Okazaki	
7404 N. Denver, Portland, Ore.	Classified Ads
ONTARIO—Mrs. James Watanabe	Minimum charge 60 cents
Rt. 1, Payette, Idaho	Per word insertion 5 cents

Today's Editorial:

Attend Leadership Training Program

A "must" for all young people's organizations in the area is the Leadership Training program which will be at 6:30 p.m. next Monday, Oct. 25, in the Neighborhood House.

Designed to aid officers and members of youth groups, the program, sponsored by the Junior Council Committee of the Jackson St. Community Council, will discuss such topics as Program Planning, What Makes for Good Participation and How to Get Members to Accept Responsibility.

In view of the apparent "Let George Do It" attitude of the Nisei mass here, young people's clubs should not hesitate to send a representative (or representatives) to this meeting which will strive to outline various factors pertinent to successful leadership in organizations.

There is always more room for capable leaders in our community.

Ban Prohibiting Oriental Citizens In Hawaii to Enter U. S. Lifted

(Continued from Page One)

certain foreign governments to their citizens or subjects, skilled or unskilled laborers, to go to countries or places other than the continental territory of the United States being used for the purpose of enabling the holders to come to the continental territory of the United States to the detriment of labor conditions therein, and ordered that such aliens laborers, skilled or unskilled, be refused permission to enter the continental territory of the United States, and

WHEREAS, the continued restraint imposed by the said Executive order upon the freedom of Japanese or Korean citizens or subjects who entered the territory of Hawaii under the passport referred to above to come to the continental United States has resulted in considerable personal hardship to such persons, and

WHEREAS, the number of Japanese or Korean citizens or subjects thus prohibited from entering the continental United States from the Territory of Hawaii is so small, and the age of such persons is so advanced, that their entry into the continental United States would no longer be a detriment to labor conditions therein:

NOW, THEREFORE, by virtue of the authority vested in me... I hereby revoke the said Executive Order No. 589 of March 14, 1907, and No. 1712, of February 24, 1913, the extent that they are applicable to Japanese or Korean citizens or subjects who entered the territory of Hawaii under the aforesaid passports and who are now precluded from legally entering or remaining in the continental territory of the United States by reason of such Executive orders.

The commissioner of Immigration and Naturalization is hereby authorized and directed, with the approval of the Attorney General, to take such action and to issue such rules and regulations as may be necessary for carrying out the provisions of this order.

Signed—Harry S. Truman.
The White House, October 18, 1948

NEW KIND OF LIVE FREIGHT
FOR NWA—Northwest Airlines, its Tokyo office reports, is the first airline to carry live trees in international air cargo service. The trees, specimens of the famous Japanese dwarf pines, were several decades old, but stood the short, fast trip from Tokyo to Seattle well. At Seattle, they were planted in Puget Sound soil. If they thrive, a large volume of business in tree-shipment is expected, because the miniature pines make unique mantel and coffee-table decorations.

AFL President William Green says: "I am pleased to add my personal approval to the official endorsement of the American Federation of Labor for the Community For centuries, the Red Feather has symbolized bravery, valor, chivalry. Today, it is still a badge to be worn proudly. Give to your Community Chest."

DENTISTS

DR. S. FUKUDA
105 Jackson Bldg., MA. 3840
DR. K. HARADA
306 12th Ave. S. EA. 8443
DR. S. HIGASHIDA
1017 Jackson St. EA 1000
DR. S. F. KANEMORI
670 Jackson St., MA. 9208
DR. H. MITSUMORI
114 Jackson Bldg., MA. 0589

NISEI FOTOSHOP

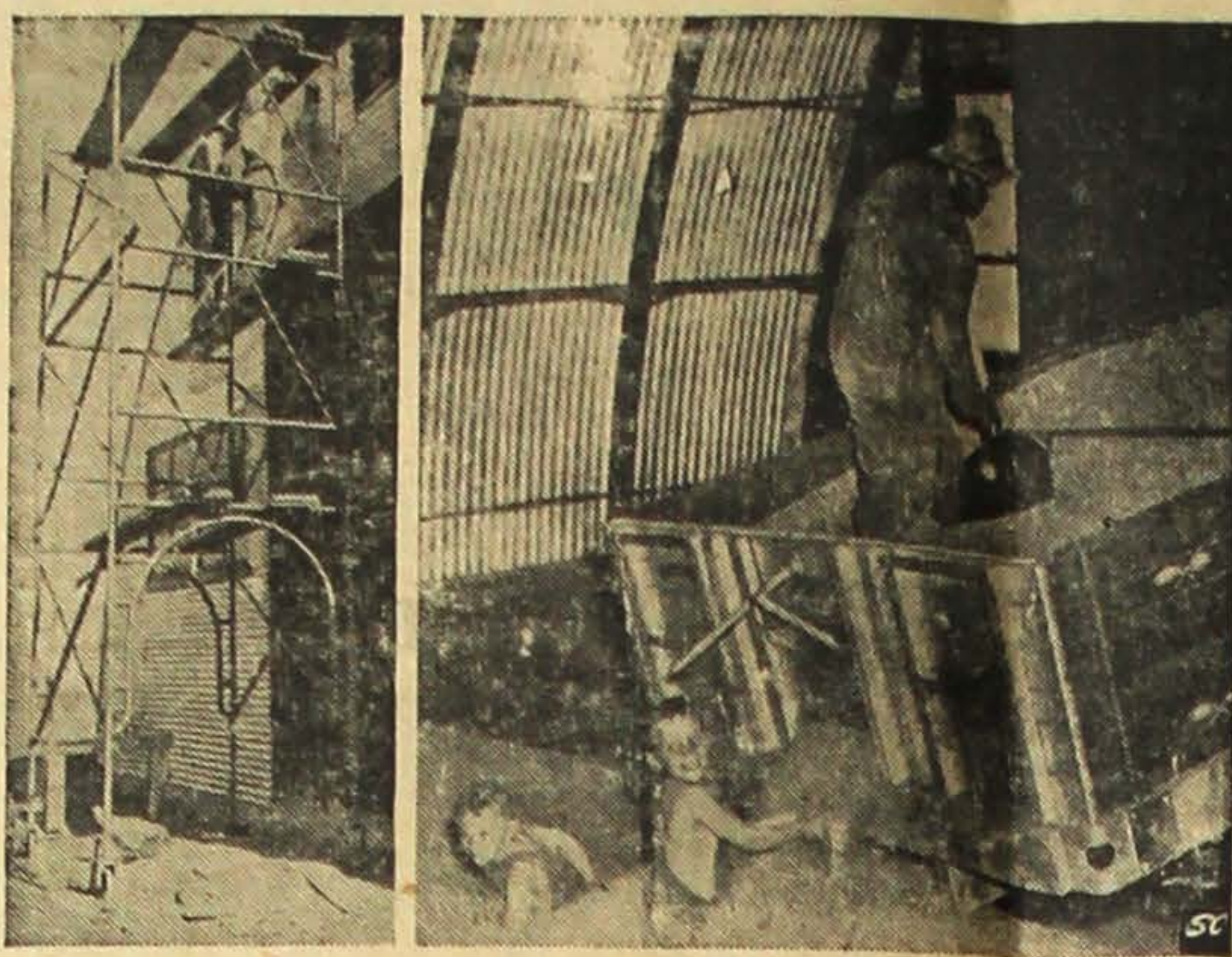
308 20th Avenue
"Complete Photographic Service"
Candid weddings Commercial Home Portraiture Camera Repair
Personalized Christmas Card Orders Taken Now
George Morihito Kats Abe
PR. 7927 EA. 3551

International Realty

Real Estate and Insurance
Business Opportunities
Notary Public

James M. Matsunaka
659 Jackson St. MA. 1532
Seattle 4, Wash.

Harvest Scenes, 1948



Throughout the nation's grain belt, hundreds of buildings like the Quonset under construction near Leoti, Kan. (left) are going up to protect the bumper crop for which there is no elevator space. In another new arch-roofed building near Hemingford, Neb. (right) Harry Cullinan's children romp in grain being placed in safekeeping for government loan of \$2 a bushel.

A building boom of record proportions is under way on this area's farms in the wake of Secretary of Agriculture Charles F. Brannan's appeal for on-the-farm storage of crops.

The increase in new construction in this area is reported by the Great Lakes Steel Corporation in announcing that shipments of Quonset buildings to the nation's farm territories are running 400 per cent greater than a year ago. The arch-roofed steel structures are being

used for storage of grains, soybeans and hay.

A proportionate share of the national increase in farm Quonset construction results from popularity of the buildings in the local territory.

The building boom is reported on the basis of Quonset orders from Texas, Oklahoma, Colorado, Kansas and Nebraska during July. A survey of Quonset dealers in South Dakota, North Dakota, Idaho, Montana, Washington and Oregon indicated similar building activity developing in these states as harvesting progresses.

Brannan, in his July 27 appeal to grain growers, predicted recurrence of the market glut in future years unless additional storage construction is undertaken, and told all farmers that they "should take prompt steps to put their farm storage facilities, in shape" so that they will be eligible for government loans and purchase agreements as a method of price support.

Last summer, with the flood of wheat filling all existing storage facilities, the grain was selling as low as \$1.60 a bushel. At the same time, the Commodities Credit Corporation was loaning \$2 and paying 7c on each bushel of stored grain. With the cost of Quonset construction averaging 22 cents a bushel, the farmers needing storage space netted 25 cents a bushel on this year's crop in addition to paying for the building. Thus he more than paid for the structure, which is suitable for machinery or barn use when cleared of grain.

Giving to the Seattle-King County Community Chest campaign is a voluntary gesture. It is not ordered—it is not compelled. It appeals neither to pity, nor to fear, but solely and exclusively to good will.

Maneki

Sukiyaki
Tempura
Private Parties
Main 9723 304 6th Ave. So.

Member of
Certified Independent
Grocers

DEARBORN

Cash Grocery

Mits Abe
Yoshito "Salty" Mizuta
We Deliver
725 Dearborn St. ELiot 9169

Fleming Favors Proposition 20



SAMUEL FLEMING

"A vote for Proposition 20 on November 2 is a vote for the continuation of the Seattle Public Schools' building program," Samuel E. Fleming, Superintendent of Seattle Public Schools said yesterday.

"Proposition 20 is the public schools' bond issue for \$7,000,000, a sum necessary to care for both emergency and long-range school planning."

"We expect a considerable amount of State and Federal money as matching funds," Fleming said. "Our program includes the construction of three or four more junior high schools as well as new elementary schools."

Junior High Schools would withdraw the 7th and 8th grades from many elementary buildings in Seattle, especially in the south end, thereby making room in the elementary schools for the record breaking total of kindergarten youngsters, Fleming said.

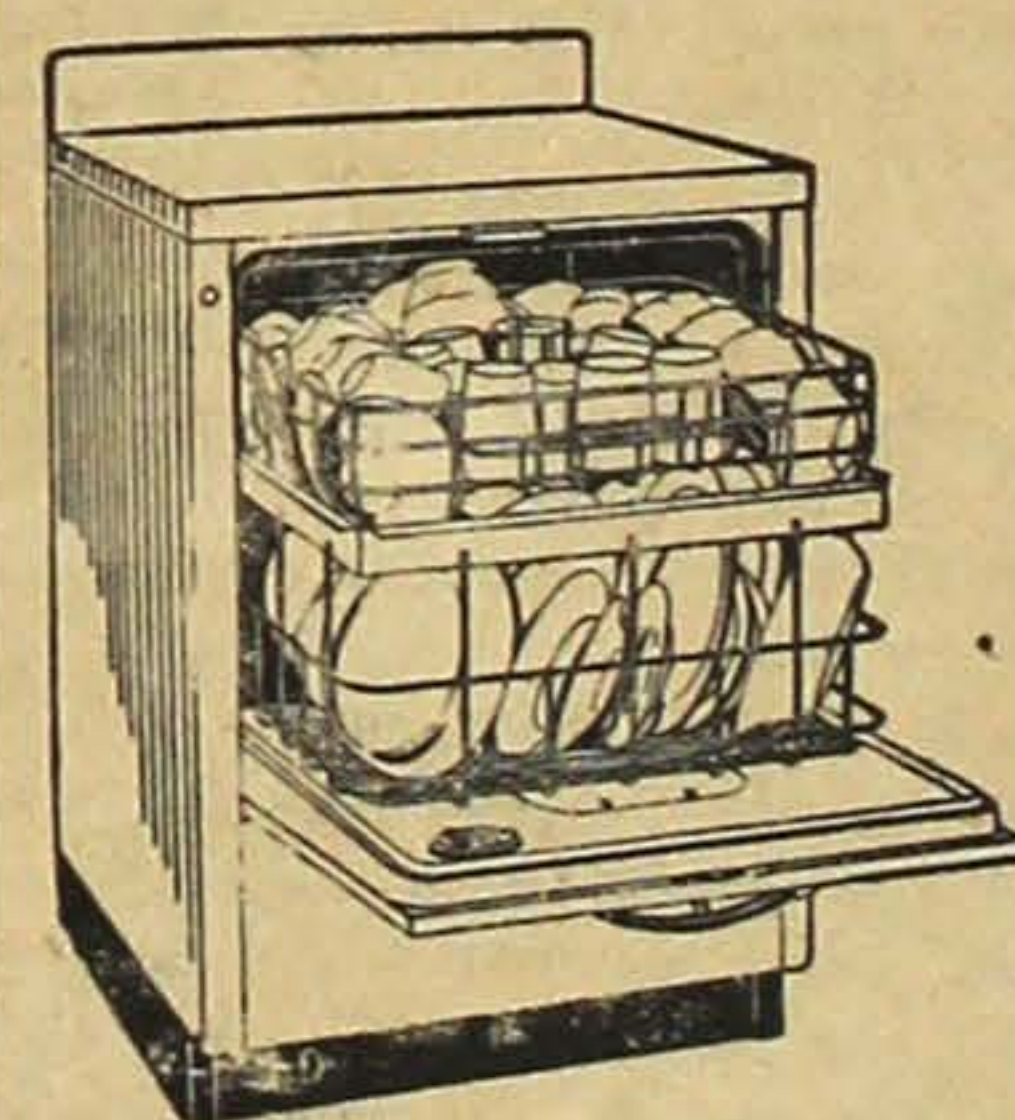
"There are so many propositions and special measures on the ballot this time that the voters may not be able to find them all. The Seattle schools sincerely hope that every voter will look for Proposition 20 at the far right hand side of the ballot and that everyone will vote on the measure."

Why Carry Them?.....

EUGENE & GOLDIE

Chinese Hand Laundry
and Cleaning
Complete 3 Days Service
Free Pickup & Delivery
EA. 7914 1219 Yesler

Hotpoint Automatic Electric Dishwasher



MC10 as illustrated \$289.95

MC8 (without top) \$269.95

MC9P800 with sink-cabinet ... \$312.95

*AUTOMATIC DISHWASHER—Press a button and wash, rinse and dry dishes. Machine is self-cleaning and self-stopping.

*FRONT OPENING—Assures easier loading. Even a child can help.

*OVERHEAD SPRAY—Washes food particles from dishes and flushes them away in a matter of seconds. Water hotter than human hands can stand—plus detergent—gives hygienic cleanliness without soap film on dishes.

*CAPACITY FOR SIX—Bright-plated brass racks accommodate service for six (58 dishes plus silver). Racks provide convenient storage between meals.

*ELECTRIC HEAT DRYING—After the washing and rinsing cycles have been completed, the 825-Watt Calrod® heating unit furnishes abundant clean heat for drying.

TASHIRO HARDWARE CO.

109-113 Prefontaine Pl.
Seattle, Wash.
MA. 8453

Your Freedom to Read

By GEORGE S. BENSON
President of Harding College
Searcy, Arkansas



AMONG PRIVILEGES we enjoy efficient distribution of all the as Americans, free speech and free things that it makes in meeting the needs and desires of the people. And prize these and other freedoms, though we give little thought to them. We just take them for granted. A Gallup poll on the Bill of Rights would embarrass a majority of our citizens. Try your own poll and see how many of your friends can name the freedoms listed in the First Amendment to the Constitution.

Freedom of the press is one of those freedoms. We are benefited by this freedom every day. The information that helps make intelligent citizens comes to us freely. Our press is not curbed nor restricted by the ill-conceived notions of some tyrant or dictator. We can buy the public prints we choose, and at a very reasonable price. We can buy many of them, including those with opposing points of view, without taking very much change out of our pocket.

Independent Press
WHY THE small price of newspapers and magazines? Jush the paper and printing costs would amount to as much as we pay for them! Does a fearsome dictator buy the difference? Does a tax-rich bureaucracy foot the bill just to keep itself in power? Are our public "prints" subsidized by Congressional appropriations? No, they are not. Then how do we have freedom of press, when we are able to buy for a nickel what costs so much more?

These things are accomplished through advertising. Advertising thus becomes one of the basic features of American democracy. It is easy to see that the advertising space sold by the publishers of our newspapers and magazines makes it possible for a publishing enterprise to pay its bills. Because of advertising, our great press is able to remain independent, and at the same time render important service to the American people.

Educating Masses
ADVERTISING ITSELF performs the major service of increasing constantly the already high standard of living which America enjoys. Our industry depends upon advertising to do its share on the

I say these things because there are those who attack the American Way by the sneak method. These destroyers (from within and without) will not attack freedom of the press. They know we cherish it. But they will attack advertising. They will not attack our high standards of living, which they envy. But they will attack the profit idea, without which American initiative and enterprise would cease to give us jobs and goods. May we ever be on our guard against those who would knock out the very props from under America!

The Seattle-King County Community Chest campaign is your campaign. It makes your community a better place to work and live. Give generously—according to your means.

Frank's Jewelry

617 Jackson St.
Seattle, Wash. EL. 8377
FRANK Y. KIAMCTO

THE NEW NORGE HOME HEATER and

CHIHARA APPLIANCE CO.

CHIHARA JEWELRY CO.

612-614 Jackson St.

MAin 2275

... invite you to have More Heat at Lower Cost so you may Live Better on Less. Like this—



WARM FLOORS are, of course, a great help to the health and happiness of the whole family. Norge Heaters provide warm corners as well as warm floors in homes up to 5-room size.

SAVING FUEL is actually "money in the bank." Big money!—due to Norge exclusive features like the L-shaped Heat Exchanger that gives you up to 40% more heating surface.

NO FUEL DUST, or dirty ashes, means a big saving in dusting, mopping, washing, cleaning of all kinds. This Norge Heater's exclusive "Whirlair" burns away every drop of fuel oil in a clean flame to save you work and time, as well as cash.

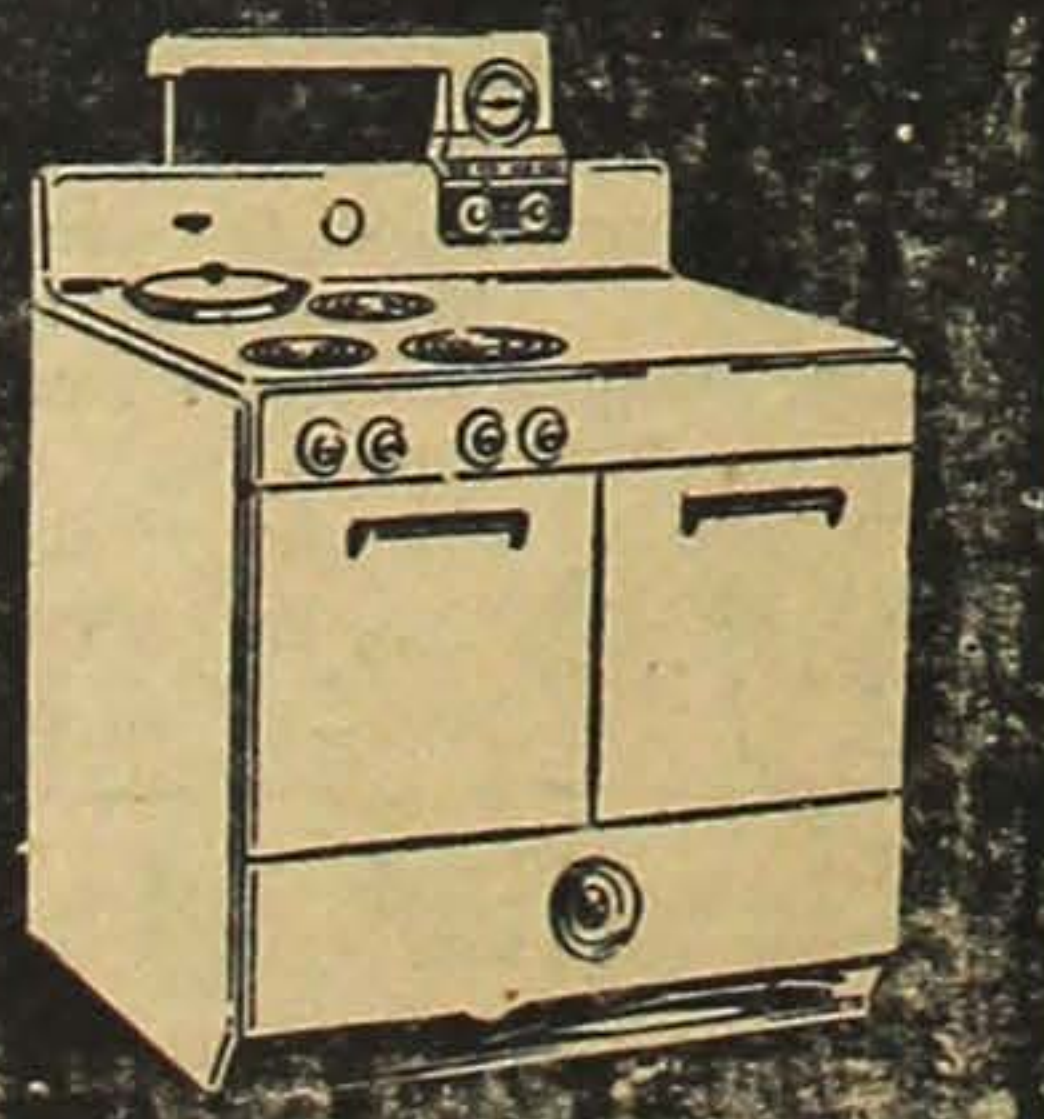
AUTOMATIC HEAT!—Get any temperature you want with a Norge Heater by just turning the knob. No fires to build. No drafts to control. No fuel or ashes to haul. Just relax and enjoy new comfort!

This great new Norge Oil-Burning Home Heater—has SIXTEEN SWEET advantages. Don't waste your money and health with an old style heater... See this different Heater today!

\$75 up
\$5 to \$20 allowance for your old stove
Pay by the Month!

SEE NORGE BEFORE YOU BUY

Come in! See the New 1948 Frigidaire Electric Range



It's beautiful in design, far advanced in improvements and new conveniences. See how Frigidaire really makes all cooking Carefree Cooking.

- Extra-large porcelain oven.
- Radiant tube 5-speed cooking units.
- Cook-Master oven clock control.
- Double-Duty Thermizer cooker.
- Waist-high, smooth type broiler.
- All-porcelain inside and out.

and many many others

Model RK-10 \$199.75
Model RK-20 229.75
Model RK-40 269.75
Model RK-60 299.75

Hikida Furniture

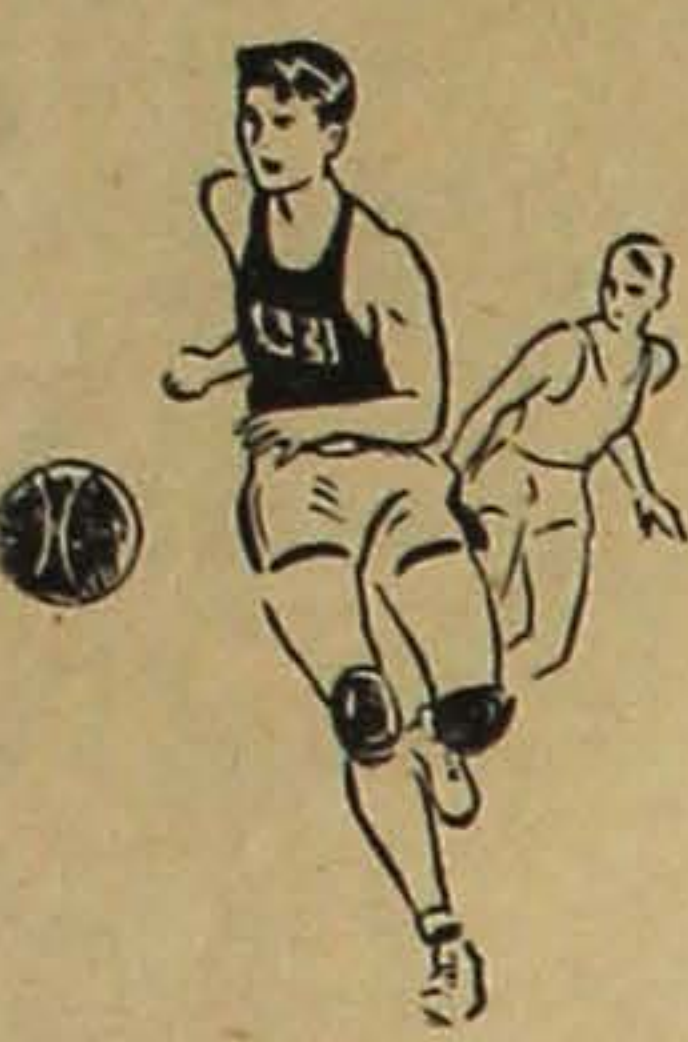
818-20 Jackson St. ELiot 2935
Res. Franklin 4755

THE Sporting Thing

by bf

Basketball Season Is Almost Here

In about five more weeks, basketball season in the Nisei community will be in full swing. The boys and girls will be sweating it out to dribble, check and shoot to win.



Many old and new performers will be trotting on the maple courts, and sports fans may well expect many lively contests.

Of course, the cries—Nice shot! Good check! Watch your man! Slow it down!—which are altogether strange to those unfamiliar to the game, will once again be ringing in the ears of those doing their stuff on the casaba scene.

Practice sessions indicate a bustling cage year.

Besides, who can skip the NVC-Cathay Post all-Oriental national basketball tournament in December and THE NORTHWEST TIMES' third annual Northwest Invitational Nisei basketball tournament the latter part of February or the first week in March?

DOWN TENPIN ALLEY

Frank Hidaka of Tacoma's Puget Sound Laundry tosses a soft ball but his remarkably accurate throws, nevertheless, telegraph a lot of pin action as his average will testify...dethroning Jean Terao as the Pacific Northwest Nisei bowling queen is Jean Numoto, young, teen-age star, who recently spanked the woods for a smashing 581 series which included a loquacious 249 game...we're wondering when Seventh Ave. Service in the City Merchants league will begin to roll as its men are quite capable...the Main Bowl classic league opens this Sunday and the feature of it will be that the Nisei and the Filipinos will be bowling together as teams...here's another plug for the Oregon Nisei Open Bowling tournament: It is to be on Saturday, Dec. 4, and Sunday, Dec. 5, in Hollywood Alleys...in Spokane, Globe hotel's aggregation comprised of Harry Honda, Murphy Iga, George Heyamoto, Julius Egashira, George Hijiya and Minor Namba is leading the teams in no uncertain manner; Egashira is top man in the circuit, and Namba is the brother of Seattle's Tommy Namba who pitches strikes for Over the Top Beverage...

Yesler Hardware & Plumbing Supplies

Kiyoshi Yasui
Bob Hikida
1713-15 Yesler EA. 5660
Seattle 22, Wash.

Prescriptions Carefully
Compounded
Phone MAin 6947

MAIN DRUG CO.

522 Main St. Seattle 4, Wash.

FRANK HATTORI REALTY

RES. MAin 6513

304-6th Ave. So. Seattle 4, Wash.

WILLNER'S Bargain Stores..EA. 8335

2212 Jackson (Near corner of 23rd & Jackson).
2306 E. Union (Across from Tradewell).

Men's heavy union suits	\$1.98 each
Men's sweat shirts	1.49 each
Ladies' cotton bloomers	.35 each 3 for \$1.00
Boy's heavy sweat shirts	.98 each 3 for \$2.50
Children's pants, Heavy cotton	.25 each 5 for \$1.00
Men's heavy underwear, shirts and drawers	1.25 each
Men's and women's heavy all-wool sweaters	2.98 each 2 for \$5.00

buttoned and slip-on styles

Open Friday until 9 P.M. (Jackson St. Store Only.)

Do your school shopping here and SAVE

You're at ease in the
Best Dressed Circle



As Advertised in
Leading Magazines

City Club

LUXURY TRED SHOES FOR MEN

48 Costly Hand Operations! Famous for action-eased comfort that only pre-flexed sole features can give. Let us demonstrate the great difference in comfort.

We check our fitting with X-Ray.

Urakawa's Toktow Shoe Co.

826 Jackson St.

Seattle, Wash.

SEnece 7974

Tamura Hits 601 For Gardeners

CITY MERCHANTS LEAGUE STANDINGS (As of Oct. 22)

	W	L
West Coast Printing	18	10
Frank Hattori Realty	17	11
Jackson Grocery	17	11
Tad's Gardening	16	12
Kashiwagi Kubs	12	16
Richard's Jewelry	11	17
Seventh Ave. Service	11	17
O. K. Cafe	10	18

NIGHT'S HIGH

Singles—Joe Tamura, Tad's Gardening, 223; Toki Mizuki, Seventh Ave. Service, 223; Joe Hayashi, Kashiwagi Kubs, 223.

Series—Joe Tamura, Tad's Gardening, 601.

The City Merchants league tasted an unusual experience Thursday night in Main Bowl.

Three trundlers—Joe Tamura of Tad's Gardening, Toki Mizuki of Seventh Ave. Service and Joe Hayashi of Kashiwagi Kubs—rolled identical 223 games.

Tamura, however, was the only one who added his high game for a hot series—a 601.

Mizuki's 223 started Seventh Ave. Service on the march to whip league-leading West Coast Printing, 3-1.

The results follow:
SEVENTH AVE. SERVICE (3)—Shiota 455, Hirayama 409, Mizuki 527, K. Tamura 440, Urakawa 551; WEST COAST (1)—P. Nakagawa 445, Minato 449, S. Nakagawa 518, Kiyono 491, Harada 445.

RICHARD'S JEWELRY (2)—Terao 470, Shimizu 469, Nakamura 355, Okada 458, Kawaguchi 455; HATTORI REALTY (2)—Suto 530, Naito 478, B. Yamashita 448, Kuramoto 499, Akada 458.

TAD'S GARDENING (3)—Asaba 462, Katayama 523, M. Shibuya 461, J. Tamura 601, Sumioka 510; O. K. CAFE (1)—Miyazaki 425, Yamada 471, Hiroo 518, Nakamichi 442, Takemura 483.

JACKSON GROCERY (3)—T. Nakata 516, Maekawa 505, B. Nakata 484, Fujimoto 463, Ihashi 546; KASHIWAGI'S (1)—Kanemori 538, Hayashi 544, H. Nakashima 409, Takasumi 525, Sugawara 495.

Juvenile delinquency costs money. Prevention always costs less than cure! Support your Community Chest.

A Nisei Rendezvous

Chick's Ice Creamery

625 Jackson St. EL. 9136

AL MAR'S

12th Ave. Food Market

CA. 0700 Free Delivery

118 12th Ave. Seattle

Golden Pheasant Cafe

Best Chinese Food in Town

SEnece 9145 307 Sixth Ave. S.

N. P. Hotel

306 6th Ave. S.

Y. FUJII

☆

Phone MAin 3952

Motorola Car Radio

Complete Automotive Repairing

Lubrication

Gas—Oil—Accessories

New Tires—New Batteries

7TH AVENUE SERVICE

701 Jackson St. EL. 9853 Seattle 4, Wash.

Charles C. Toshi—Ted K. Imanaka—George Koyama

Richard's Jewelry

Expert Watch Repair

—Official N. P. Railroad Time Inspector—

Dr. Duncan Tsuneishi

Optometrists

Seattle 4, Wash. SE. 2151

216 4th Ave. So.

Basketball Equipment and Uniforms

Friendly H A B'S

Complete Sporting Goods

EL. 7038 815 Jackson St.

MARTHA'S BEAT O'ER TOP, 3-1, IN SNGBO TILT

SNGBO LEAGUE STANDINGS (As of Oct. 22)

	W	L
Martha's Beauty Shop	23	5
Over the Top Beverage	19	9
China Import & Export	19	9
Takano Studio	14	14
Slop 'n Shop	13	15
Tokuda Drug	11	17
New Chinatown Cafe	8	20
Gyokko Ken Cafe	5	23

NIGHT'S HIGH

Singles—Yo Kitayama, Over the Top Beverage, 199.

Series—Jean Numoto, China Import & Export, 505.

Martha's Beauty Shop, top team, repulsed Over the Top Beverage, 3-1, in the feature series of the SNGBO (Seattle Nisei Girls' Bowling Organization) circuit last Thursday in Main Bowl. Miye Ishikawa (469) and Mitzi Sanico (487) once again paced the winners. Yo Kitayama

SNGBO "BIG TEN"

	Average
1. Jean Numoto	165
2. Mitzi Sanico	155
3. Kiki Yamamoto	155
4. Mary Tsuchikawa	152
5. Tak Yokoyama	150
6. Yo Kitayama	149
7. Aiko Kawaguchi	148
8. Pat Hidaka	148
9. Sue Lew	147
10. Fumi Yoshida	147

(480) was the beverage machine's best pin-toppler.

The results follow:

MARTHA'S BEAUTY SHOP (3)—Miye Ishikawa 496, Martha Ikeda 369, Fumi Ishikawa 422, Mary Maniwa 441, Mitzi Sanico 487; OVER THE TOP BEVERAGE (1)—Yo Kitayama 480, Sachl Kodama 357, Dot Imai 386, Rose Young 441, Mary Tsuchikawa 441.

TOKUDA DRUG (3)—Pat Hidaka 432, Carol Dady 418, Laury Posey 399, Mickey Hirano 427, Tak Yokoyama 490; GYOKKO KEN (1)—Yoshie Doi 458, Tak Kojima 364, Kathy Hashizume 344, Ruby Nishiguchi 360, Pat Tanaka 339.

CHINA IMPORT & EXPORT (3)—Rosemary Beppu 424, Kiyu Yamaguchi 412, Peggy Okada 414, Gladys Hamano 411, Jean Numoto 505; STOP 'N SHOP (1)—Fudge Sakamashi 402, Anna Nagai 381, Asako Sakai 315, Peggy Tanaka 364, Fumi Yoshida 418.

NEW CHINATOWN CAFE (3)—Madge Ono 387, Ida Nakauchi 280, Mits Kodama 437, Pat Kageyama 394, Toshi Kanazaki 425; TAKANO STUDIO (1)—Aiko Kawaguchi 403, Suzie Shimizu 403, Dot Kodama 404, YoYo Konishi 388, Kiki Yamamoto 448.

Nothing can constitute good-breeding which has not good nature for its foundation.—Bulwer.

Shanty Inn Cafe

"WHERE FRIENDS MEET"

110 12th Ave. OA. 9677

Gyokko-Ken Cafe

508-510 Main St.

Seattle 4, Wash.

Tacoma Bounces Back to First Place In NCL By Whitewashing Cathay Post

Plucky, fighting Puget Sound Laundry of Tacoma fought its way back to first place in the Nisei Commercial league last Tuesday night in Main Bowl.

The laundrymen overcame a several-mark lead held by Cathay Post 186 in the final game to sweep the series, 3-0. Anchorman Kaz Yamane picked up a spare in the tenth in the last tilt to assure his Tacoma outfit the triumph.

Over the Top Beverage displayed some of its much-heralded power by walloping Shanty Inn, 3-0. The ale squad slaughtered the tenpins for a 2765 scratch series.

Lucky Northwest Times had to call on Kaz Yamasaki to pull the deciding game out of the fire in its tussle against International Realty. Yamasaki "turkeyed-out" in the tenth of the third game to give the Nisei newspaper trundling team a 2-1 decision.

Sakahara Insurance dealt Puget Sound Vegetable Growers' Association a stiff 2-1 defeat on the strength of Roy Fujiwara's mark in the final frame of the third game.

After dropping the first game, Main Drug rallied to take the last two to down Higashi's Mobile Service, 2-1. George Kimura, Tuk Tada and Nobu Takahashi's 200-plus games for the druggists left little room for argument in the third rolling.

Twelfth Ave. Service, which shuffled its lineup the last two weeks and found a competent combination, held the victory cards, trimming City Produce, 2-1.

The results follow:

PUGET SOUND LAUNDRY (3)—Joe Asahara 429, H. Tanabe 573, Shigio 454, F. Hidaka 542, Yamane 477; CATHAY POST (0)—Eng 497, Poy 401, Yapple 483, Chin 451, Goon 434.

OVER THE TOP BEVERAGE (3)—Tanaka 573, Ihashi 507, Namba 516, Fujino 566, T. Shibuya 603; SHANTY INN (0)—Urakawa 565, Asaba 468, Okada 414, Kuranishi 568, Tsuji 561.

NORTHWEST TIMES (2)—G. Tanagi 518, Nishimoto 557, Hiral 397, K. Yamasaki 491, Kuniyuki 478; INTERNATIONAL REALTY (1)—Segimoto 521, Tsuchikawa 468, Yokoyama 443, P. Takagi 527, Nomura 509.

SAKAHARA INSURANCE (2)—Roy Tanagi 543, Oyama 510, Rick Tanagi 513, S. Suyama 546, Fujiwara 510; PSVGA (1)—Iwasaki 544, R. Kiyohara 485, Ota 493, Yamaguchi 547, Maeboi 488.

MAIN DRUG (2)—Takahashi 567, F. Hidaka 501, Tada 474, Furuta 511, Kimura 580; HIGASHI'S (1)—Hamasaki 453, Higashi 449, Nishimura 394, Shimizu 446, Tsuboi 512.

12TH AVE. SERVICE (2)—Inouye 493, J. Koga 435, Nagasawa 503, Takayoshi 459, M. Koga 504; CITY PRODUCE (1)—Ikeda 427, N. Suyama 423, Obata 470, Horiuchi 445, I. Nakashima 531.

TERRY'S AUTO SERVICE

1202 Rainier Ave. EA. 9459

Gas-Oil—Auto Repair

MORIO TERAYAMA

TAKANO STUDIO

HENRY Y. MIYAKE

668 Jackson St.

Seattle 4, Wash.

Phone MA. 8186

CA. 8952

WASH AND IRON THE SAME DAY!

The G-E All-Automatic Washer spin-dries ready for ironing

Before you buy any automatic washer, see this General Electric marvel that soaks, washes, rinses—then spin-dries many pieces ready for ironing—all automatically!

It's tops in automatic washing.

ASK FOR A DEMONSTRATION

JACKSON FURNITURE

650 Jackson St. SEnece 0468

Seattle, Wash.

NISEI COMMERCIAL LEAGUE STANDINGS (As of Oct. 20)

	W	L
P. S. Laundry (Tacoma)	15	6
Northwest Times	14	7
Over the Top Beverage	14	7
P.S.V.G.A. (Sumner)	14	7
Main Drug	11	10
Sakahara Insurance	10	11
International Realty	9	12
Shanty Inn	9	12
City Produce	8	13
Higashi's Mobile Gas	8	13
12th Ave. Service	8	13
Cathay Post 186	6	15

NIGHT'S HIGH

Singles—Bill Tanaka, Over the Top Beverage, 221.

Series—Tak Shibuya, Over the Top Beverage, 603.

NIGHT'S 540-PLUS STARS

PUGET SOUND LAUNDRY—Hank Tanabe 173-203-197-573; Frank Hidaka 177-175-190-542; OVER THE TOP BEVERAGE—Tak Shibuya 205-207-191-603; Manabu Fujino 192-193-181-566; Bill Tanaka 160-192-221-573; SHANTY INN—Shig Urakawa 193-183-189-565; Jim Kuranishi 165-190-213-568; Pruney Tsuji 178-181-202-561; NORTHWEST TIMES—Hero Nishimoto 189-171-197-557; SAKAHARA INSURANCE—Shoichi Suyama 179-188-179-546; Roy Tanagi 208-187-148-543; PSVGA—Morrie Yamaguchi 184-177-186-547; George Iwasaki 202-171-171-544; MAIN DRUG—George Kimura 170-190-220-580; Nobu Takahashi 203-163-201-567.

TUESDAY, Oct. 26

Alleys 1 and 2—PSVGA vs. Cathay Post.

Alleys 3 and 4—Shanty Inn vs. City Produce.

Alleys 5 and 6—12th Ave. Service vs. Higashi's.

Alleys 7 and 8—Main Drug vs. Over the Top Beverage.

Alleys 9 and 10—Sakahara's vs. N. W. Times.

Alleys 11 and 12—P. S. Laundry vs. International Realty.

Jantzen Selected Dance Site

PORTLAND, Oreg., Oct. 23—The beautiful ballroom at Jantzen Beach, Pacific Northwest's million-dollar playground, will be the scene of the Oregon Open Nisei Bowling tournament dance on Sunday, Dec. 5, it was announced today by Victor Wong and Henry Itami who are in charge of the affair.

Dancing will be from 9 p.m. to 12:30 a.m., and Wes Lang and his orchestra will play during those hours. The tournament awards will be presented during the intermission of the dance.

Admission price will be three dollars per couple.

The bowling tournament is on Saturday, Dec. 4, and Sunday, Dec. 5.

109 18th So. MI. 1320

Rainier Garage

Auto Repair

H. Furumoto Res. MI. 0832

JACKSON GROCERY

1803 Jackson St. EA. 0603

Prop. Mrs. Hannah Maekawa

TOKUDA DRUG

1724 Yesler GEORGE TOKUDA, Prop. CA. 3611

Prescriptions carefully compounded by REGISTERED PHARMACISTS

"Favorite Nisei Fountain"

SERVING FAMOUS WELCOME GUEST ICE CREAM

DRUGS MAGAZINES GREETING CARDS

SUNDRIES

No. 500

SMITH RICE MILL CO.

DEWITT, ARK.

COATED RICE

GLASS AND TALC.

REMOVE BY WASHING

BEFORE USING

NO. 500 RICE

TRADE MARK REGISTERED

NORTH COAST

Importing Co. 515 Maynard Seattle 4, Wash. Tel. EL. 4833

Supply Co. W. 27 Main Ave. Spokane 8, Wash. Tel. MA. 3718

DISTRIBUTORS

SMITH 500 Blue Rose Rice

DAIKOKU Brand Rice

MARUSHO Shaya

KOKUSUI Shaya

TAKA Shaya

SHIRAYUKI Ajinomoto

HIME Udon

NVC MAY START CAGE LEAGUES DEC. 3 HERE

The Nisei Veterans Committee-sponsored basketball leagues will open tentatively on Friday, Dec. 3, in the Seattle Buddhist auditorium, it was announced today by Henry Yorozu, director.

Yorozu, who is being assisted by Tak Miyahara and Aubrey Funai and Su Kashiwagi, treasurer, told THE NORTHWEST TIMES that his aides have selected Fleas Oka-zaki, Tosh Funai, Shig Watanabe, Shig Kaseguma and Ted Nakanishi to be referees. Two more whistlers are sought by the sponsoring group. All referees in the NVC circuits, Yorozu said, will attend a basketball referee clinic in order to insure better officiating during the coming '48-'49 season.

Addition of Tacoma boosted the number of teams in the girls' league to seven. The other six are Lotus Starlets, Chicks, WWG's, U.W. Coeds, Lotus and Anna Kays. The number of boys' teams has not changed.

CLASS AA

Main Bowl, Mercury, South End Merchants, Wah Mee, U.W. Students, Tokuda Drug and White River.

CLASS A

Baptist Comets, Tokuda Drug Savoy, Nacoo Mercury, Cathay Post 186, Tacoma Ciracs, Lotus Lancers, Greenhouse and Main Drug Crows.

CLASS B

Troop 53 Midgets, Hornets, Toda's, Tacoma, Chinese and St. Peter's.

Present plans call for games on Friday nights and Sunday afternoons, and Yorozu hopes to have the season finished by Feb. 29 in time for THE NORTHWEST TIMES' third annual Northwest Invitational Nisei Basketball Tournament.

Final meetings of all leagues will be in this order, according to Yorozu:

CLASS B AND GIRLS—7:30 p.m., Wednesday, Nov. 3, in Seattle Buddhist temple.

CLASS A—7:30 p.m., Wednesday, Nov. 10, in Seattle Buddhist temple.

CLASS AA—7:30 p.m., Wednesday, Nov. 17, in Seattle Buddhist temple.

In all these meetings, the final player list must be turned in, Yorozu said. The by-laws will be released and the schedule will also be made up then.

SPLASH PARTY TICKETS IN LIMITED NUMBER

Tickets for the Stop 'n Shop bowling team's splash party to be given on Saturday, Nov. 13, in the YMCA are selling fast, reported Anna Nagai of that group today.

As tickets are limited, those who desire to attend the affair are urged to purchase their ducks now from any member of the Stop 'n Shop team.

The tickets are seventy-five cents apiece.

Swimming will be from 9 to 10 p.m., and the social will be from 8:30 to 11:30 p.m.

FRANK'S NISEI BARBER SHOP

Service to Satisfy with Modern Equipment

open till 9 p.m.

Frank Tanigawa

1918 Yesler Way

Auto, Fire, Liability

INSURANCE

John S. Ogishima

318-6th Ave. So. MAin 5186

Seattle, Wash.

Chicago JACL Chapter Announces Slate of '49 Office Candidates

CHICAGO, Ill., Oct. 23—A slate of candidates for 1949 officers was announced by Kumeo Yoshinari, chairman of the nominations committee of the Chicago JACL at its membership meeting held last week.

Running unopposed for the president's post is Shig Wakamatsu. Harold Gordon and Mike Hagiwara are running for vice president; Tom Okabe, treasurer; Tsugi Ieiri and Sylvia Arta, corresponding secretary; Kay Yamashita and Ariye Oda, recording secretary; and Herbert Sasaki, Masato Tamura and George Taki, delegates-at-large.

The meeting featured a mock trial based on an actual civil rights violation case in the State of Illinois. Every Nisei attorney in Chicago participated in the production prepared by the chapter's legislative information committee. Included in the cast were attorneys George Kita, James Ogisaka, Tom Masuda, Jiro Yamaguchi, Joe Shibata, Franklin Chino, Wiley Higuchi and Harold Gordon. Others were Elaine Ishikawa, Roxie Takehara, Shig Wakamatsu, Mike Hagiwara, Noboru Honda and Tats Kishida.

Speaker for the evening was Judge Wendell E. Green, popular magistrate in Chicago's municipal court, who spoke on "What the Negro Wants".

MARRIAGE LICENSES

Yoshito Mizuta, 33, 815 1/2 Third Ave.
Yuki Ibara, 28, 5982 Rainier Ave.

George Terai, 24, Seattle.
Hatsue Miyamoto, 22, Bellevue.

Course Slated On Baby Care

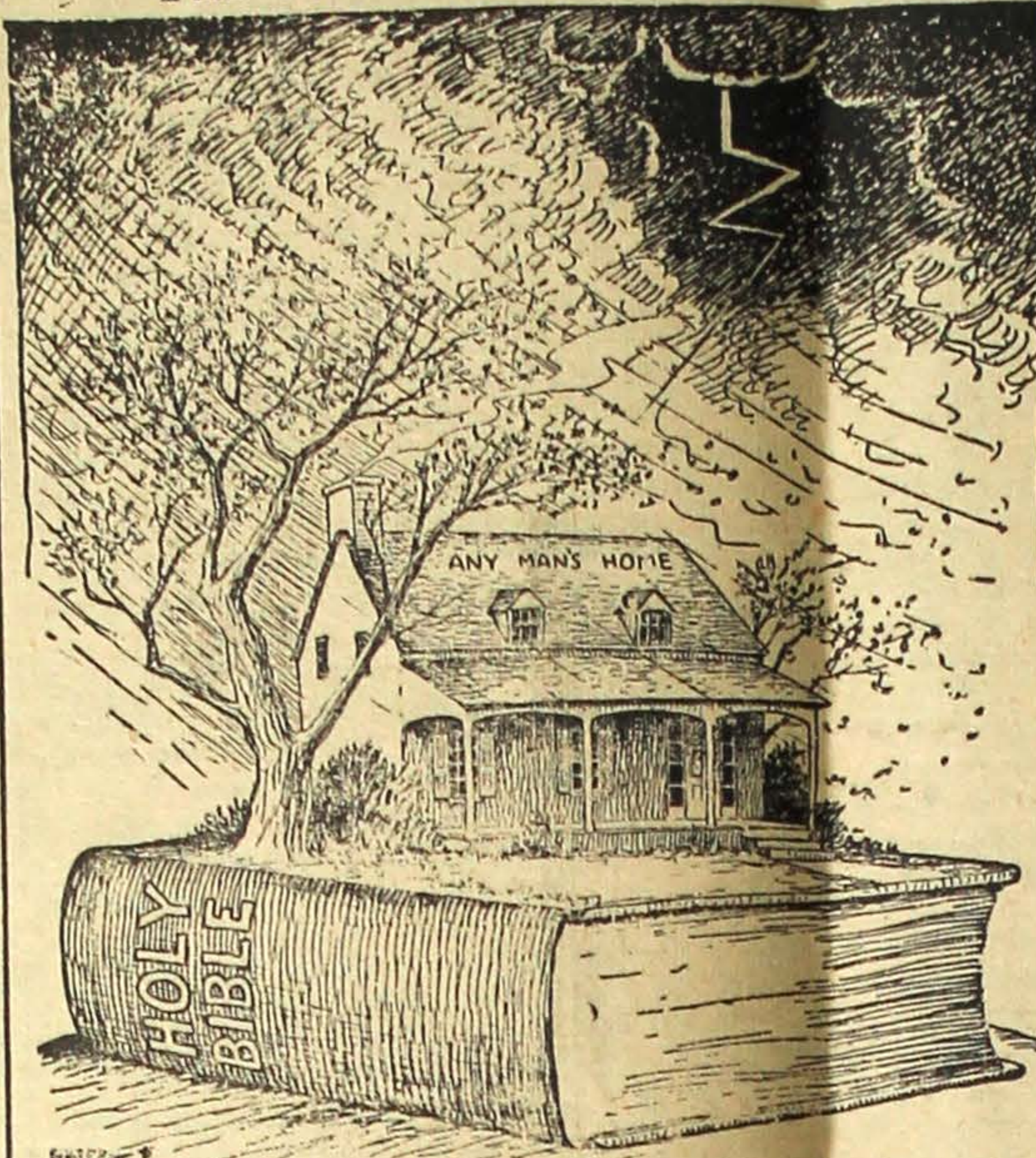
Mothers and fathers-to-be, as well as any adult responsible for the care of a baby, are urged to take advantage of the Red Cross Mother and Baby Care course starting Nov. 1. Mrs. S. H. Tashian, volunteer home nursing chairman for the Seattle-King County Red Cross chapter, said today.

Offered without charge as a public service and designed to replace fear with knowledge, practical basic instruction in the care of the expectant mother, and the care and feeding of the new baby, will be given by registered nurses. Registrants may choose between classes meeting for two weeks on Mondays, Wednesdays and Fridays from 10 a.m. to 12 noon, 1 to 3 p.m. and 7:30 to 9:30 p.m., starting Nov. 1, or classes meeting at the same hours for three weeks on Tuesdays and Thursdays, starting Nov. 2.

Registrations are now being taken in Red Cross headquarters, 905 Second Avenue Building, where the courses will be given. Additional information or registration may be obtained by calling EL 2800.

President Truman says: "The Red Feather campaign is as American as 'E Pluribus Unum,' for the Red Feather too has brought one out of many. The Red Feather campaign is many campaigns in one."

The House Built On a Rock



NATIONAL BIBLE WEEK
OCTOBER 18-24

Sponsored by Laymen's National Committee
Vanderbilt Hotel, New York 16, N. Y.

"I always have said, and always will say, that the studios perusal of the sacred volume will make better citizens, better fathers and better husbands."—Thomas Jefferson.

Church Notices

BAPTIST
9:45 a.m.—Sunday School.
10 a.m.—Issei worship service.
11:15 a.m.—Nisei worship service.
11:15 a.m.—Nursery during Young People service in the Broadway nursery building.
7:30 p.m.—BYF.
Okazaki classes from 8 to 9 p.m. on Mondays.

BUDDHIST
10:00 a.m.—Kindergarten Class.
11:00 a.m.—Young People Service.

CONGREGATIONAL
10 a.m.—Issei worship service.
10 a.m.—Sunday School for nursery, kindergarten, beginners, primary and juniors. New boys' class in primary department.
11 a.m.—Nisei worship service.
9 p.m.—Evening devotional by candlelight in Upper Room. Howard Sakura will speak, Sachiko Ueygaki will sing, and Kaz Naito, Joe Fujita, Meri Toda and Mrs. Martha Kawaguchi will participate in the procession. Marie Yamanishi will be chairman. The public is cordially invited to attend.
8 p.m.—Bible study class for Nisei every Monday.

MARYKNOLL
9 a.m. and 10:30 a.m.—Low Mass. Benediction will be held following 10:30 Mass.

METHODIST
11 a.m.—Nisei worship and Bible study.
October 24—8 to 9:30 p.m.—Candlelight service in the Upper Room.
1ST CHRISTIAN INTERRACIAL
8 p.m.—Services by the Rev. J. J. Pruitt in YMCA chapel, Fourth and Madison.
NICHIREN BUDDHIST CHURCH
10 a.m.—Kindergarten children and juniors service.
11 a.m.—Young people's service in English.
2 p.m.—Japanese Service.
PRESBYTERIAN
Sunday, Oct. 24
9:30 a.m.—Church school for all ages.
10 a.m.—Issei worship service.
10 a.m.—Young people's Bible discussion.
11:10 a.m.—Nisei worship service. Seichi Adachi to preach on topic, "God's Great Gamble".
6:30 p.m.—Junior Westminister Fellowship.
7 p.m.—Senior Westminister Fellowship. Panel discussion on subject, "Education for What?"
ST. PETER'S MISSION
9 a.m.—Issei Holy Communion.
Rev. G. Shoji
9:45 a.m.—Sunday School, Miss Gladys Gray.
11 a.m.—Nisei Worship Service.
7:30 p.m.—Fri-night YPF Meeting.

Nisei Collegians Active in School

PORTLAND, Oreg., Oct. 23—Lewis and Clark College may have but few Nisei among its students but those few are very much in the campus way of life.

Kazi Inuzuka, past president of the Cohecons, a home economic club, is vice president of the Northwest College Home Economic Association, and group leader of the White Shield Center, a Salvation Army unit.

Miyeko Fujita is corresponding secretary of the Women's Athletic Association.

Dorothy Iwasaki, besides being secretary of the Upper Women's Dormitory, is historian of the Cohecon, and an active member of the Red Cross, Student Christian Association and Sacajawans. The Sacajawans is an organization of freshmen and sophomore women who are selected for membership on character, service to school and willingness to serve.

Kiyoo Yamamoto, secretary to the Alpha Rho Omega fraternity, is also secretary-treasurer to the International Relations club.

Aki Makino is a member of the Student Christian Association and the Inter-varsity Christian Fellowship.

Tsuguo Ikeda, yell king, is a member of the Student Christian Association and the International Relations club.

Hansel Akiyama is a ski enthusiast.

Methodist Notes

A junior high party will be held after school classes on Tuesday, Oct. 26, in the Japanese Methodist Church. The seventh graders will be in charge of refreshments and the eighth and ninth graders will be in charge of the games.

The Methodist Youth Fellowship will hold its get-together on Friday evening, Oct. 29, in the Japanese Methodist Church. Its special guests will be the youth group of the Seaview Methodist Church. Tomi Yoshioka will be general chairman.

Saturday, Oct. 30, is the date for the children's masquerade party in the Japanese Methodist Church. The party will be from 2 to 4 p.m. Prizes will be given for the best costumes and masks.

IKEDA & CO.

WHOLESALE GROCERS

SEneca 2196

600 6th Ave. S.

Seattle 4, Wash.

Portable Power Source Runs Many Tools



DETROIT, Mich.—Multi-Tool is a new self-contained power source, delivering up to 1 1/2 h.p. at a wide range of speeds which are controlled with finger-tip dial.

In addition to shop uses, automatic transmission with 3-step pulley permits belt operation of generators, grinders, elevators, pumps and other farm equipment.

Negro Soprano Not only Sings But Plays Musical Instruments

Dorothy Maynor, young negro soprano, who will appear in Meany Hall, at 8:30 p.m., Friday, Nov. 5, under the auspices of the Associated Women Students of the University of Washington, is often referred to as a "musician's musician." A rare phenomenon among singers, Miss Maynor plays the oboe, piano, French horn, and can orchestrate a song and transpose accompaniment at sight.

Her musical heritage is the folk music of her people. With her brother, a tenor, and her sister who played the organ, Miss Maynor helped her father and his struggling parish by singing in the church choir.

At 14 she entered Hampton Institute to study home economics, but music gradually assumed the greater importance. Her musical talent received instant recognition when as a member of the Hampton choir she was chosen to tour the

United States and Europe. In her senior year Miss Maynor was given a scholarship at Westminster Choir School at Princeton. Three years later she went to New York to study, also conducting the choir of the Nazarene Congregational church in Brooklyn. Later she made her debut performance at Town Hall in New York.

Tickets for the Dorothy Maynor concert may be obtained at 304 Clark Hall on the campus, the University Book Store, and Sherman-Clay and Company. Tickets are \$3 and \$2.50, with a special price of \$1 for University students.

Citizenship is everybody's responsibility. Do your share by giving as much time and money as possible to the Seattle-King County Community Chest during the annual campaign, September 30 to October 18. It's "The Best Thing We Do!"

WHEN YOU WANT . . .

*Diamonds

*Watches

*Silverware

Call SAIBO FUJII

Bus. MA. 7670

Res. CA. 2517

Personal Representative

Friedlander & Sons.

5th at Pike

CONVENIENT CREDIT—NO INTEREST—A YEAR TO PAY

Hair beauty secrets... by toni



Your mirror will tell you if your face is diamond shaped. Radio star Joan Tompkins, who plays the nurse in the romance series, "This Is Nora Drake", has a perfect diamond face and dresses her hair like the diagram on the right. The basis of Joan's coiffure is a soft, natural looking home permanent.

SOCIAL WHIRL

L. A. COUPLE VISIT.—Mr. and Mrs. James S. Masuda who were married last Oct. 10 in the First Congregational church in Los Angeles, were in Seattle for a brief visit last week-end. Mr. Masuda is formerly of Seattle, and Mrs. Masuda is from Buena Park, Calif.

BIRTHS

To the Rev. and Mrs. Gikan Nishinaga, 1719 Fawcett Ave., Tacoma, a girl, in Tacoma General hospital.

Monday, Oct. 18
To Mrs. John Hashimoto, 1413 E. Spruce, a boy, at Providence hospital.

Wednesday, Oct. 20
To Mrs. Joe Sugiura, 3144 Fairview N., a boy, at Harborview hospital.

Thursday, Oct. 21
To Mrs. Hiromi Nishimura, 718 6th So., a girl, at Maynard hospital.

Main Street Service

GAS - OIL - AUTO REPAIR
12th & Main St.
EAsT 9614

SUSUMI-

BUTTERWORTH
FUNERAL SERVICE

300 East Pine EL 0558

After 6 p.m., call
MA. 0949

Main Shokudo

All Kinds of Japanese Foods
505 Main St. SE. 9429

INSURANCE

FRANK Y. OKADA
Automobile-Fire-Burglary
Window Glass-Public Liability
Health and Accident
502 Main St. SE. 0781

Patronize Your Advertisers

We Fit Shoes
to Keep
Feet Fit...



by
X-RAY

Urakawa's
Toktow Shoe Co.

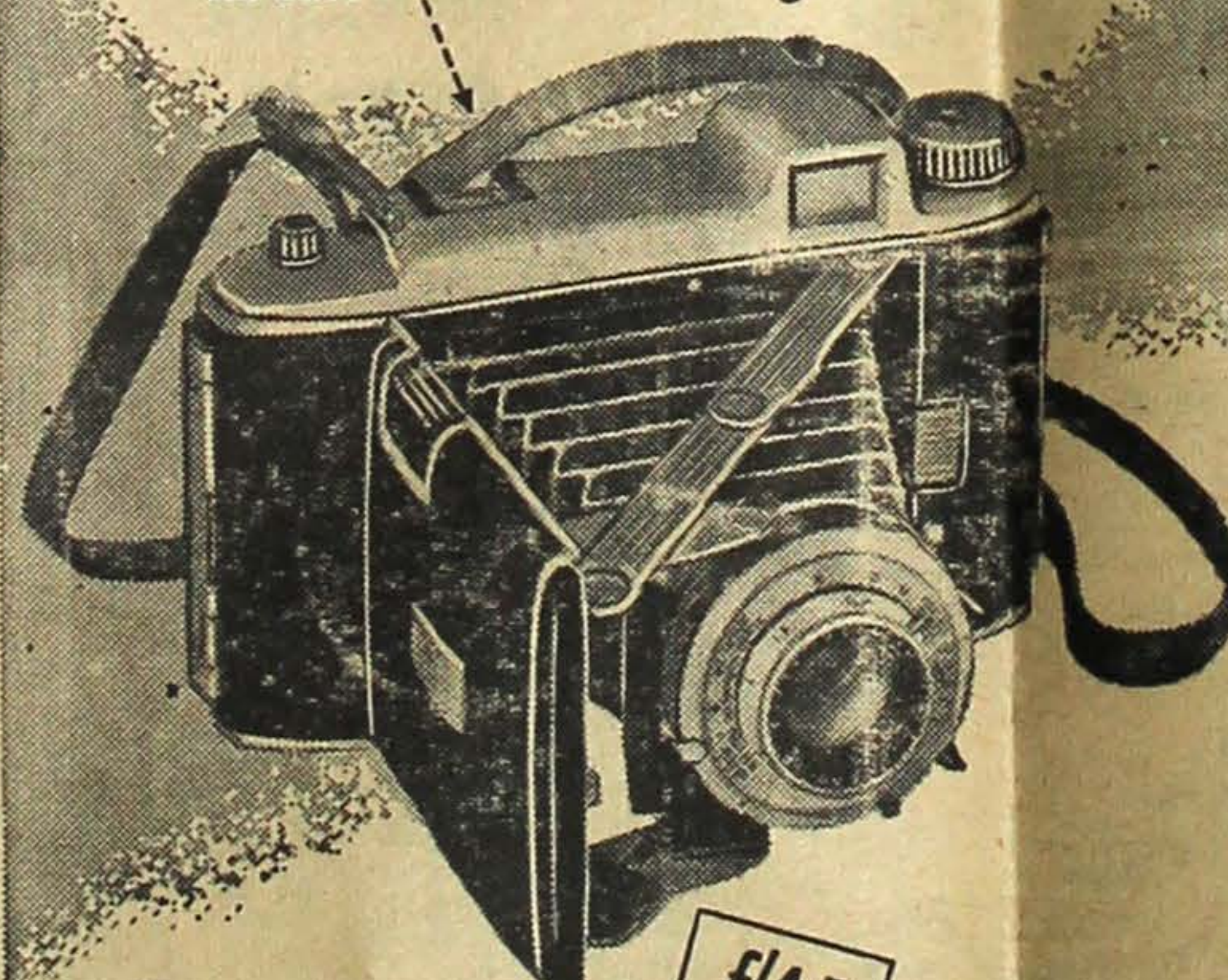
526 Jackson St.

Seattle, Wash.

SEneca 7076

stop in and see

Kodak's newest folding camera...



The KODAK TOURIST CAMERA

You'll like its smart new styling and the many operating features that mean better pictures for you. The f/4.5 lens is Luminized and highly color corrected... the shutter has 5 accurate speeds to 1/200, with built-in synchronization for easy flash shots... the exposure computer simplifies lens and shutter settings. Takes 620 Kodak Film. Don't fail to see this new folding camera here.

The Kodak Tourist

With f/4.5 71.00

With f/6.3 53.68

With f/8.8 42.14

W. NAKAMURA CO.

664 Jackson St.

Seattle, Wash

SE. 4716

the New
Frigidaire
"Compact-7"

Holds more food

Than ever before in the same kitchen space!



Model Shown is MJ-7
\$239.75

Other "Compact" models

with all these
FEATURES

- Famous Motor-Mixer mechanism
- Exclusive Outback Trays with Instant Cube Release
- All- porcelain inside, stainless porcelain on bottom
- Large Super-Freezer
- Multi-purpose Storage Tray
- Full-width, roller-bearing hygienic, glass-topped

And Many Other Frigidaire Features

More Frigidaires Serve in More American Homes Than Any Other Refrigerator

Hikida Furniture

ELiot 2935

Res. FRanklin 4755

818-20 Jackson St.