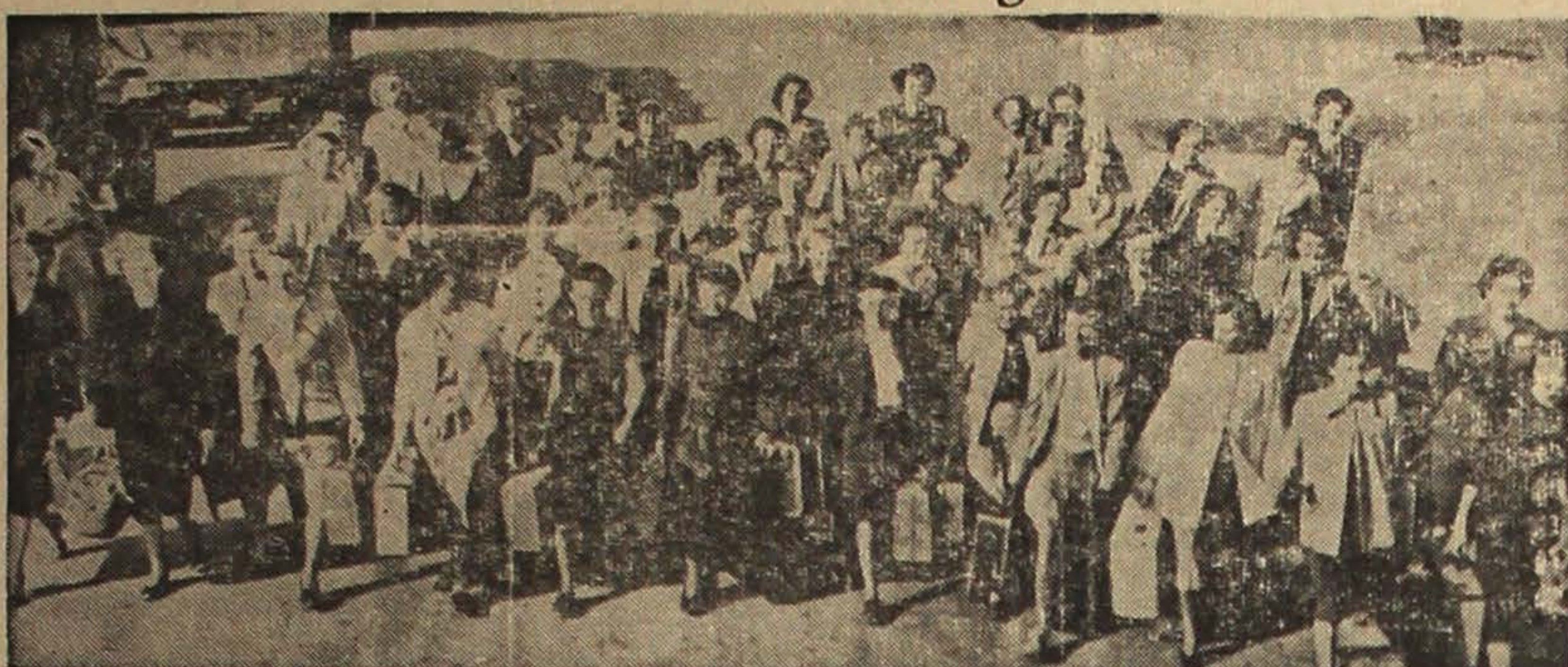


In For a Trimming!



Japanese May Soon Win Voting Rights In B. C., Reports Vancouver Scribe

VANCOUVER, B. C., Nov. 20 (New Canadian Dispatch)—Providing the federal government as expected lifts its ban on movement of Japanese in B.C. coastal areas, the Japanese would be given the voting franchise in British Columbia next spring, according to a Vancouver Sun reporter in Victoria.

Continued the report: This is the prediction in government circles here following the action of the Vancouver City Council in recommending the civic vote for Japanese last Nov. 1.

The fact that the legislature is ready to wipe out one of the last vestiges of racial discrimination in voting in B. C. was indicated last session.

Attorney-General Gordon Wismer at that time supported the continuation of the ban on Japanese by pointing out that since the federal authorities do not let them travel freely to the Coast—a hangover from wartime restrictions—it would be anomalous of B.C. to give them voting rights which would automatically give them citizenship claims.

He is much as intimated that when Ottawa lifts its restrictions the cabinet here will be ready to support the Japanese franchise.

Ottawa is expected to remove the ban next March 31.

In the last two years the legislature has extended the franchise to all but two of the racial and religious groups which were previously barred from voting.

The Chinese and the Hindus got the right in 1947. Last spring, the Mennonites and the Hutterites were awarded the franchise.

This left but the Japanese and the Doukhobors outside the voting pale.

If they have served in the armed forces, they are allowed to cast ballots.

Chi JACL Elects 4 Formerly Here

CHICAGO, Ill., Nov. 20—Four former Pacific Northwesters were elected '49 officers of the Chicago JACL chapter at its annual membership election meeting last Nov. 10.

They are Shigeo Wakamatsu, formerly of Pife, president; Masao Tanura, also hailing from Pife, and Mike Hagiwara and George Tak, both of Seattle delegates-at-large. Harold R. Gordon is vice president; Thomas Okabe, treasurer; Grace Watanabe, recording secretary; and Tsugli Ieiri, corresponding secretary.

Speaker for the evening was Leo Lerner, outstanding liberal civic leader, publisher and editor of a chain of community newspapers and chairman of the Independent Voters of Illinois. His topic was "General Impressions on the Presidential Election".

Santa's Helper



CINCINNATI—June Myers believes in shopping early as national headquarters of the Disabled American Veterans issues annual appeal to add the name of a hospitalized disabled veteran to Christmas shopping lists. Names may be obtained from DAV Chapters or Veterans Administration hospitals.

First of NWA Planes Off to Orient To Evacuate American Civilians



NEW YORK — Gen. Dwight D. Eisenhower puts on a Columbia tie presented to him by the Student Board of Columbia University Presentation preceded a football game at Baker Field.

The 1943 Christmas Seal Sale opens throughout the nation on Monday, Nov. 22. In Seattle and King County, Christmas Seals will be mailed by the Anti-Tuberculosis League of King County to 200,000 Seattle and King County residents.

LACKLAND AIR BASE, TEXAS—(Soundphoto)—The first peacetime influx of lady recruits is shown arriving at the Lackland Air Force base with their duffie. Shortly after this photo was made, they were "processed" and started on their 11-week training grind to convert them into full-fledged Air Force women. Biggest part of the process was the trimming of civilian locks to conform to Air Force regulations.

JACL Aides Named To CARE Group

DETROIT, Mich., Nov. 20—Peter Fujioaka, Detroit JACL president, and T. Kokubo, chairman of the Detroit JACL-ADC were named to the committee of sponsors of the Detroit Committee for CARE, it was learned this week.

Both Fujioaka and Kokubo are contacting members of the Japanese community of Detroit announcing that CARE packages expressly made up for Japanese people are now available for immediate delivery. Tom Arima of the Nisei Caucasian Fellowship and Fujioaka are accepting orders for processing.

At present tuberculosis, which kills nearly 50,000 Americans a year, kills at the rate of 137 persons a day, one person every 10 minutes. Buy Christmas Seals.

The first of Northwest Airlines' stepped-up series of Orient flights to aid in the evacuation of American civilians from China departed from Seattle-Tacoma airport at 6:30 a.m. Thursday morning, the airlines officials announced today. The first extra flight took off less than a week after Northwest was requested to put on extra Orient flights by Army authorities.

A second ship left Minneapolis-St. Paul at 6:45 a.m. Friday. In addition to these two extra flights the airline will operate three additional weekly flights between Anchorage and Tokyo. In Tokyo, the flights will pick up evacuees who have been assembled by the Army from all parts of China.

The ships in the special service will be four-engine DC-4's. The plane, as modified for Northwest's regular Orient service, has 24 seats but numbers of passengers on the special flights may lead to increased seating capacity.

Nisei Calendar

NOVEMBER
20—Stag-Stage dance in Buddhist Auditorium from 8:30 p.m. co-sponsored by U. W. Coeds and South End Merchants.
24—Thanksgiving Eve sports dance by Nisei Veterans Committee in Palladium ballroom.
25—Skating party to be sponsored by White River basketball club from 10:30 p.m. to 12:30 a.m. at Rollerland Skating rink in Renton.
DECEMBER
4—Anna Kay's basketball team to present talent show and community singing in Buddhist Auditorium from 8 p.m.
11—Baptist Youth Fellowship of Japanese Baptist church to sponsor ice-skating party in the Civic Ice Arena from 10:30 p.m. to 12:30 a.m.
24—Christmas eve semi-formal dance featuring Frank Barker & his orchestra at Bruce Crane Ballroom from 9 p.m. to 12 a.m. Sponsored by Riascho YBA.
31—South End Merchants to sponsor its annual New Year's Eve dance.

MASAOKA CITES VITAL FACTORS IN LEGISLATION

CHICAGO, Ill., Nov. 20—Success in the field of national legislation depends upon two factors: intensive preparation and intelligent presentation, Mike Masaoka, national legislative director, Japanese American Citizens League Anti-Discrimination Committee, said yesterday (Friday).

He spoke before a meeting of the second national Conference on Intergroup Relations.

Frequently failure of national groups to achieve legislation which they are honestly convinced is beneficial to the nation can be traced to one of these two factors, he said.

Intensive preparation of material is the prime prerequisite for legislative success. It means exhaustive and careful compilation of all facts which bear upon particular legislation and does not imply that groups should attempt to hide those factors not especially favorable to the bill sought, he said.

Intelligent presentation must take into account two things: 1, that Congressmen are diligent enough to recognize omissions and errors, and, 2, that Congressmen, being human (which some lobbyists are inclined to forget at times), are going to recognize both your interests in legislation and in themselves as individuals, Masaoka said.

U.S. GI Comes Home With Japan Bride

LOS ANGELES, Calif., Nov. 20 (Rafu Shimpo Dispatch)—It all started with a "Moshi, Moshi," in the Fukuoka newspaper office, but romance has blossomed into marriage, and now they are together in Los Angeles living as man and wife.

One of the first of Uncle Sam's Occidental GIs to bring home a Nipponese girl is 23-year-old Richard Long. His bride, Chiyoko, also 23, doesn't speak a word of English but her brown eyes flutter often to express her devotion and love for the former Air Force corporal.

After a year of marriage, which was performed by the American consul in Kobe, they've learned that love can conquer all obstacles.

Long admitted he had no feelings for Japanese when his ship was torpedoed from under him during the height of the Pacific war. "But my whole outlook changed when I went to Japan for Army duty. They were a misled people," Long commented.

The couple were married in late 1947 when the U.S. authorities granted one month time limit for Americans in the service to marry Japanese girls if they chose.

You will find it less easy to uproot faults, than to choke them off. —Ruskin

Classified Ads

WANTED: Second maid for general housework and serving. Room, board, and \$100 per month. Two Japanese now employed in home. CA 5073.

SHARE GROWERS WANTED: 25 families wanted to grow strawberries in virgin soil. All new housing. Hot and cold running water, indoor toilets. Domestic water, plants, equipment, fertilizer, insecticides, irrigation ditches and water furnished by company. Write to Joseph Kiser Co. Bank of America Building, San Jose, Calif.

SCHOOL GIRL to live in. Walking distance from Edison Technical School. Call evenings, CA 3582.

FOR SALE BY OWNER: 6 1/2 room house, Colonial style. \$11,000. EA 6804.

NISEI WAITRESS WANTED: Experience unnecessary. Apply 2308 Jackson, EA 9419.

Pays Respect to Brother, a Hero



BROTHERS MEET AGAIN
Watson Endo, one of the first three Nisei King County draftees under the peacetime Selective Service Law, pays his final respects to his brother, Pfc. Robert T. Endo, who was killed in France, before leaving

for induction yesterday. Pfc. Endo's funeral is being held today at the Seattle Buddhist temple and interment will follow at the Veterans' Memorial Cemetery at Washelli.

—Cut courtesy Seattle Times.

Plane Sales Chief Finds 'Going Native' Fine to Get Most Out of Foreign Trip

So you'd like to get the most out of foreign travel?

Then try going native.

That's the advice offered by L. B. Kinports, Northwest Airlines' director of sales, who returned to the Twin Cities recently after a month's visit to the Orient. Of course, he hastened to explain, a traveler doesn't need to abandon his usual role if he doesn't want to. But if he really pines to know how, for instance a Japanese lives, he can get at least an inkling by stepping out of character.

In following this line in Japan, Kinports confided, he tried an Oriental custom of squatting on the floor instead of sitting on a chair—and developed a cramp in his legs for trying.

He ate raw lobsters and fish—and prefers the cooked. He managed to feed himself with chopsticks—but will not throw away the conventional cutlery in his home.

These were some of the drawbacks to going native. But even these had their educational value. And there were other experiences which gave him a better insight into the customs and viewpoints of the people he visited.

For instance, that night he spent in a typical Japanese hotel—one patronized mostly by the native—there were only a few pieces of furniture in his room. Food was served on a low table, which later was removed and replaced by a mattress rolled out on the floor for sleeping. The place was immaculately clean, and its frugal furnishings included beautiful screens and lattice work.

"That simple room, I believe, gave me a better understanding of at least one phase of Japanese character, their ability to forego comforts and yet impart a touch of beauty to their surroundings," Kinports said. "I believe that anybody who visits Japan should spend at least one day in a Japanese hotel or inn."

These hotels and inns, he added, are usually surrounded by lovely gardens. Some of them, with a thought to the American tourist trade have a few "western style" rooms.

This matter of going native is for experimental purposes only. Kinports explained—for the Orient offers to the traveler many accommodations that are fully equal to those found in the United States. These will be even more abundant

3 NISEI HERE INDUCTED FOR ARMY SERVICE

The first three Nisei draftees from King County to be called under the peacetime Selective Service Law, were inducted into the Army yesterday (Friday) morning and sent to Fort Ord, Calif., for training.

The Nisei draftees are Tadao Shibuya, 922 20th Ave., and Wataru Endo, 1611 Yesler Way, from Local Board 4; and Harry Y. Akizuki, Kent, Wash., from Local Board 7.

This was the second draft call and the Nisei men were among the 12 called from King County. They were ordered to report to Selective Service headquarters in the Second and Cherry Building Friday morning. The first group of 16 men were inducted last Friday, Nov. 12.

Arlington Burial Planned for GI

The remains of T/Sgt. Jimmy T. Shimizu, who was returned last week from overseas temporary cemetery for reburial in the United States, will be interred in the Arlington National Cemetery, it was learned today.

Sgt. Shimizu was a graduate of Wapato, Wash., high school where he was named on the all-star roster of the South Central Washington district in 1933 and 1934.

He volunteered into the Army in 1939, and after being inducted at Fort Lewis, Wash., he trained at Fort Ord, Calif., and Camp Crowder, Missouri. Sgt. Shimizu served with Company F of the 2d Battalion, 42nd Infantry Regiment.

Sgt. Shimizu is survived by his parents, Mr. and Mrs. Ajiro Shimizu, 2006 E. Union; sisters, Mrs. Mabel Endo of Los Angeles, Calif., Alice who is in New York, and Mary, Seattle; and brothers, Frank and George of Chicago, and John-son, Seattle.

Christmas Seals will be sold throughout the nation beginning November 22 to finance the tuberculosis work of the 3,000 associations affiliated with the National Tuberculosis Association.

eral Chennault, world-famous leader of the wartime "Flying Tigers" and now an aviation official. At a luncheon given by Judge Norwood F. Allman, he was introduced to some of the leading bankers and businessmen of China. He talked with officials of the China Travel Bureau and made a number of side trips out of Shanghai.

Today's Editorial:

Everyone Should Have His Chest X-Rayed

The most commendable civic program today is the city-wide drive to have everybody's chest X-rayed free.

X-ray units are stationed throughout the city in an effort to eradicate tuberculosis which claimed 200 lives in Seattle and King County alone last year.

The Jackson Street area has only three per cent of Seattle's population but the area had 20 per cent of the city's T-B deaths in '47, according to Mrs. Ruth Manca, executive council of the Jackson St. Community Council.

Mrs. Manca's statement is based on statistics compiled by the tuberculosis division of the City Health Department so that should be all the more reason the people in our community should cooperate in the campaign and have their chests examined.

12 Beautiful Sanctioned Alleys

TAKE ADVANTAGE
30c per game until 6 P.M.
HOLIDAYS and SATURDAYS
as well as week days.

MAIN BOWLING ALLEY
The MAIN Place to Bowl!
306 Main St. MAIN 9399

WE'RE NEW HERE...

But we're not new in the cleaning business. Our experience gives us the "know-how" to take expert care of your clothes, to please the most exacting person.

For quality service, depend on CHERRY CLEANERS

2918 E. Cherry Yoichi & Fumi Matsuda
"Just call PR. 5610, that's all!"

Christmas Shopping
STARTS NOW!

The Northwest Times

THE ONLY ALL-ENGLISH NISEI NEWSPAPER
IN THE PACIFIC NORTHWEST

Established January 1, 1947

Published every Wednesday and Saturday of each week.
Editorial offices at 304 Main St., Seattle 4, Wash. Phone
SEneca 5594. Office hours: 9 a.m. to 6 p.m. daily except
Sundays and holidays.

Editor & Publisher Budd Fukui
Associate Editor Hideo Hoshida
Art Editor Tom Tsutakawa

SPECIAL REPRESENTATIVES

TACOMA—Kimi Fujimoto
1710 Fawcett Ave., Tacoma, Wash.
PORTLAND—Tom Okazaki
7404 N. Denver, Portland, Ore.
ONTARIO—Mrs. James Watanabe
Rt. 1, Payette, Idaho

SPOKANE—Norio Wakamatsu
W. 325 Trent Ave., Spokane, Wash.
Bus. MAin 6712 Res. L-2382

PUYALLUP VALLEY—Mrs. Arthur Yamada
P.O. Box 117, Milton, Wash.

Subscription Rates Classified Ads
One month \$.75
Six months 4.25
One Year 8.00
Minimum charge 60 cents
Per word insertion 5 cents

Church Notices

Every church is requested to send in its notices by Tuesday noon of each week so that the changes may be made accordingly and in time for the Wednesday editions of that week.

BAPTIST

9:45 a.m.—Sunday School.
10 a.m.—Issei worship service.
11:15 a.m.—Issei worship service.
11:15 a.m.—Nursery during Young People service in the Broadway nursery building.
7:30 p.m.—BYF.
Okazaki classes from 8 to 9 p.m. on Mondays.

BUDDHIST

10 a.m.—Sunday School. Chairman, Mary Wataoka; Organist, Etsuko Ichikawa; Receptionists, Dharma Class.
11 a.m.—Young People Devotional Service. Chairman, Jack Same-shima; Organist, Yasuko Ota; Speaker, Rev. Masunaga.
11:45 a.m.—Young People Choir practice.

CONGREGATIONAL

10 a.m.—Issei worship service.
10 a.m.—Sunday School for nursery, kindergarten, beginners, primary and juniors. New boys' class in primary department.
11 a.m.—Issei worship service.
8 p.m.—Bible study class for Nisei every Monday.

New NORGE Home Heater



SAVES FUEL

...Norge's exclusive feature, the L-shaped Heat Exchanger, gives you up to 40% more heating surface.

NO FUEL DUST

...Norge's exclusive "Whirlator" burns away every drop of fuel oil in a clean flame to save you work and time, as well as cash.

ECONOMICAL

...Saves fuel up to 25% because of automatic air pump.

\$75.00 up

\$5 to \$20 allowance for your old stove.

See this New Norge Heater

Chihara Jewelry
Chihara Appliance

612-614 Jackson St.
MAin 2275

WHEN YOU WANT ...

*Diamonds
*Watches
*Silverware

Call SAIBO FUJII

Bus. MA. 7670

Res. CA. 2517

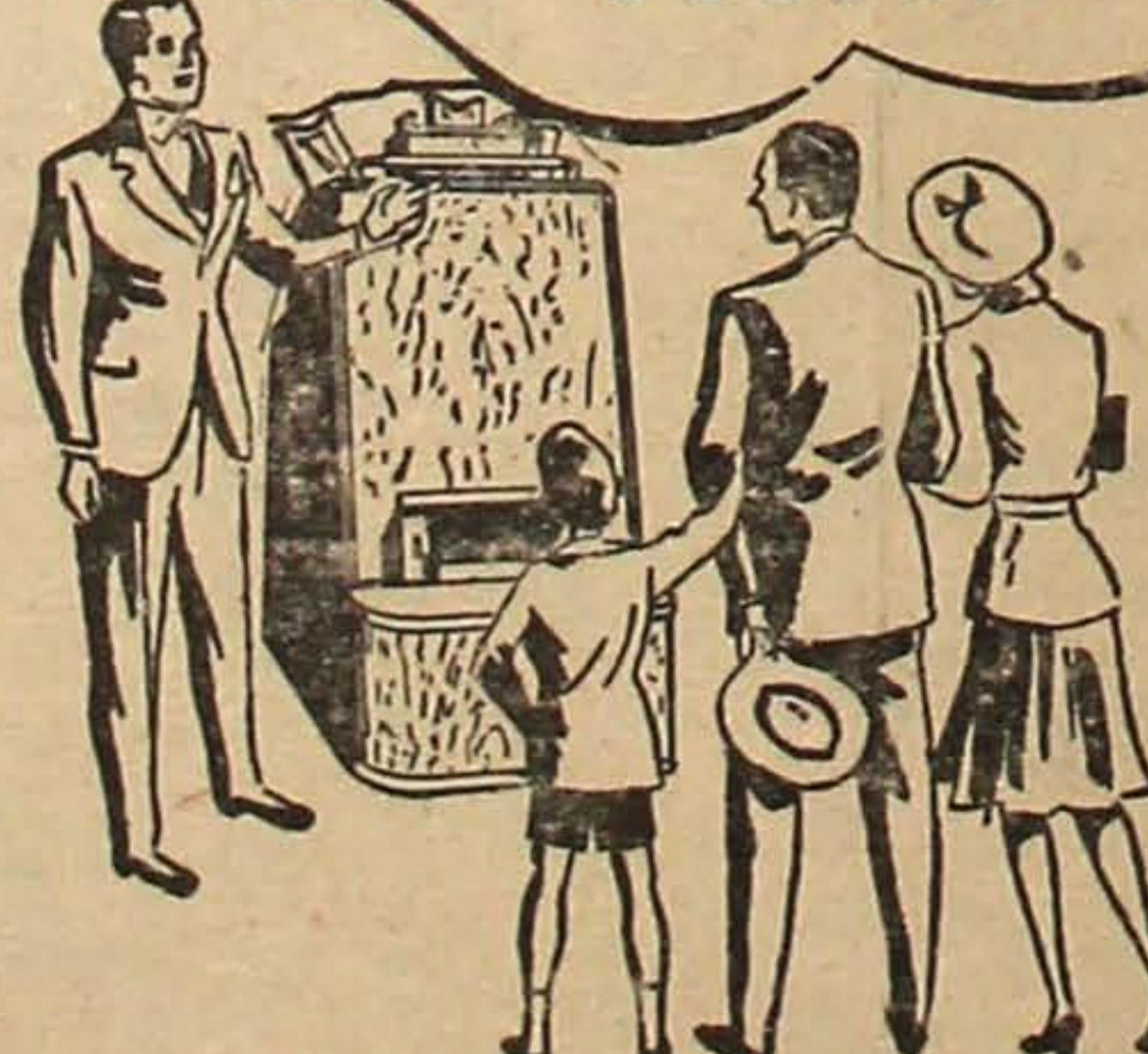
Personal Representative

Friedlander & Sons.

5th at Pike

CONVENIENT CREDIT—NO INTEREST—A YEAR TO PAY

We Fit Shoes to Keep Feet Fit...



by X-RAY

Urakawa's
Toktow Shoe Co.

878 Jackson St.

Seattle, Wash.

SEneca 7976

FLIGHT OF BUSINESS

By GEORGE S. BENSON
President of Harding College
Searcy, Arkansas



WHAT SHOULD a business firm do when it finds that wage demands have put its expenses up higher than the income it can reasonably expect? This is the plight facing many businesses today. Some of them are taking flight to fairer climates. Perhaps you have heard of the big textile factory that is leaving New England. No it didn't decide to go to the South. It will leave the States entirely and go to Porto Rico. It had to go somewhere. It had to stay in the black, or close down.

Our industries will not all go to Porto Rico, but this incident is a handwriting-on-the-wall message addressed to all of us. When a business reaches the saturation point, where it cannot collect more income (in the form of new business, increased sales, or higher prices), then something's got to happen. If it cannot cut expenses, then it may go broke. This situation is tough on little businesses especially, but it's dangerous even to big ones.

A Mutual Interest

MAYBE THIS thing explains our increasing rate of business failures. When the break-even point is so high and so close, even a little drop in income or a step-

up in expenses can put a company in serious danger. It doesn't make any difference, either, that the volume of business today is so big. Most of our companies have to do two to five times the amount of business they did before the war, just to break even.

American workers are smart. Their good sense is needed today as never before. They can do a lot to help industry get on a sound footing. They know we can avoid misunderstandings that are so common if everybody sees that industry's problems are also America's problems. Labor can seriously consider the important things. Labor can help work out solutions that are to the best interest of both industry and the general public, knowing that these are also very important to labor.

Our Own Creation

TAKE THIS inflation, for example. That old spiral that always catches you right between the pay-check and the grocery store, can be scotched. One solution is greater production. Labor knows a lot about production problems. Are workers any less interested in higher output, because high output is something that also interests the management and the public? No, they still want production to be high. Increased production, if it delivers goods to the public, softens the danger of runaway prices. High output also makes it possible for the company to pay continued high wages.

Some American workers have had experience with businesses that couldn't pay. A company that is in danger of folding up is no good as an employer. Therefore, the problem facing the boss in his effort to show more income than expense is also the problem of the workers. Labor may have some of the answers.

A lot of Americans may be fooled by the seemingly endless bounty of business. Government, also, is expected to give and give and give. Yet, it doesn't make sense to expect either of them to keep on giving

Lighthouse to Greet Blind Persons In Area at Open House Sunday

The welcome mat will be out this Sunday, Nov. 21, for all blind persons living in the Seattle area when the Community Chest-supported Lighthouse for the Blind

opens its new Center for the Blind at 604 University Street. Approximately 600 blind persons have been invited to attend the open house from 2 to 4 p.m. Sunday, which will mark the official opening of the Center. Mrs. Irving S. Smith is chairman of the Center's volunteer advisory committee.

The Center, the only one of its kind in the country to be supported by the community through its Community Chest contributions, will be the headquarters for social, educational and vocational activities for blind persons.

Volunteers at the Center will do shopping for the blind, read, write letters, mend and serve as dancing partners.

A permanent advisory committee, under the chairmanship of Mrs. Smith, will meet regularly to consider problems and conduct the business of the Center.

Special YW Tea Set for Monday

With Santa Claus ready to crawl out of mothballs again for his regular annual tour, women in this district will be interested in a special program to be given at a Y.W.C.A. membership tea Monday afternoon, Nov. 22.

The art of gift wrapping and tying and the knack of making novel tree and mantel ornaments from waste materials such as tin cans, will be demonstrated.

The tea will be from 2 to 4 p.m. in the lobby of the Central YWCA. The second in a series of special program teas, it is complimentary to members, and non-members may attend for a small fee. Nursery facilities will be available for pre-school children.

Assisting in the pouring will be Mrs. William Mimbu, 2615 21st Ave. S.

Neither government nor business ever actually creates a dollar of wealth. Each can give benefits only out of that which it receives. By the same token, our high living standards are actually the products of our own intelligent work and continued high production.

TAKANO STUDIO

HENRY Y. MIYAKE

668 Jackson St.
Seattle 4, Wash.
Phone MA. 8186
CA. 8952

NISEI FOTOSHOP

308 20th Avenue

"Complete Photographic Service"

Candid weddings

Commorials

Home Portraiture

Camera Repair

Personalized Christmas Card Orders Taken Now

George Morihoro
PR. 7927

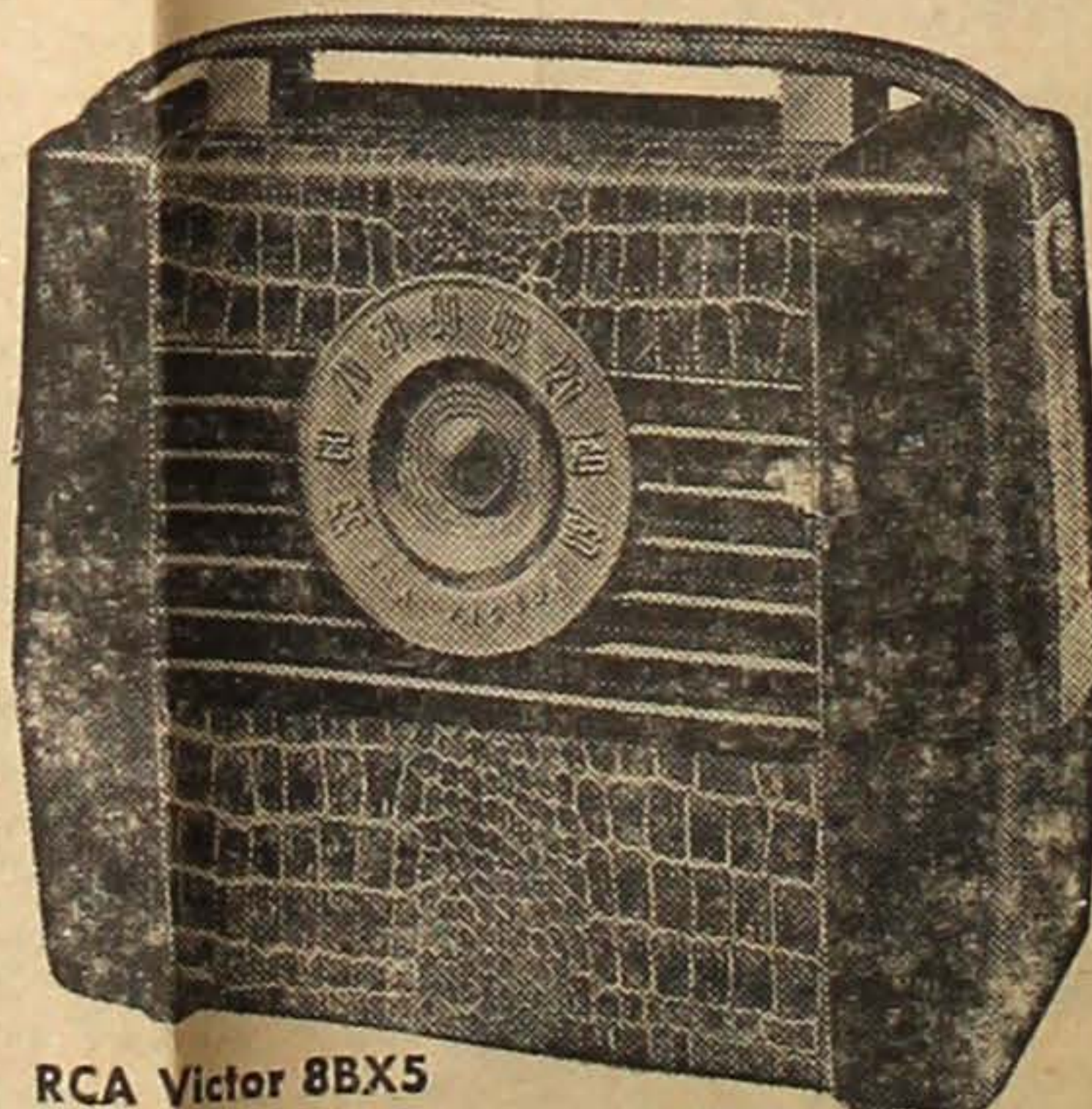
Kats Abe
EA. 3551



RATES WITH DATES!

New Portable by

RCA VICTOR



RCA Victor 8BX5

with the

Golden Throat

Finest tone system in RCA Victor history

"THREE'S a crowd"—but this powerful little radio is a welcome addition to any gathering! It plays anywhere—on AC or DC house current or on its own, long-life, RCA battery. Less than one foot long, it has fine volume, glorious tone of the "Golden Throat"—it's lightweight, smart, in durable maroon plastic with non-tarnish, golden-finished trim and a luggage-type covering.

Drastic reduction on all small table models. Perfect Christmas Gift. Select yours today.

W. NAKAMURA CO.

664 Jackson St.

Seattle, Wash

SE. 4716

Why Carry Them?.....

EUGENE & GOLDIE

Chinese Hand Laundry
and Cleaning
Complete 3 Days Service
Free Pickup & Delivery
EA. 7914 1219 Yester

Frank's Jewelry

617 Jackson St.
Seattle, Wash. EL. 8377
FRANK Y. KIAMIOTO

Powder Box Beauty Salon

KIKUE HAGIMORI

MARY TSUCHIKAWA

526 King St. MAin 2973
Seattle, Wash.

Bus.
MAIN
6513



Res.
MIInor
0934

304-6th Ave So.

Seattle 4, Wash.

MODELS WANTED CHILDREN-WOMEN-MEN

New material needed by agency submitting to national advertisers for possible modeling work or use of picture. Send picture for consideration. Experienced or inexperienced. Photographs become our property and can be returned only upon senders request and at his expense. We are not responsible for loss or damage through handling. Limit three CLEAR prints.

THE DVORAK STUDIOS OF
ADVERTISING ART

408 Stockton St.
San Francisco 8, Calif.

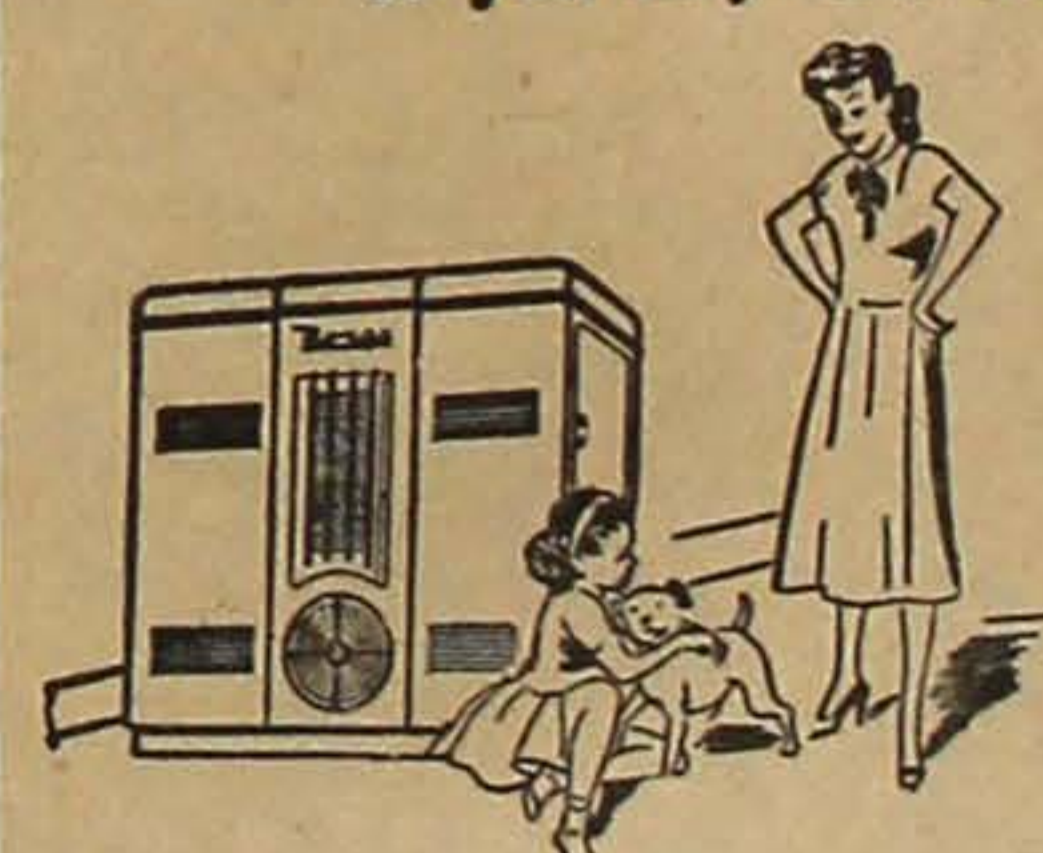
THE NEW NORGE HOME HEATER and

CHIHARA APPLIANCE CO.
CHIHARA JEWELRY CO.

612-614 Jackson St.

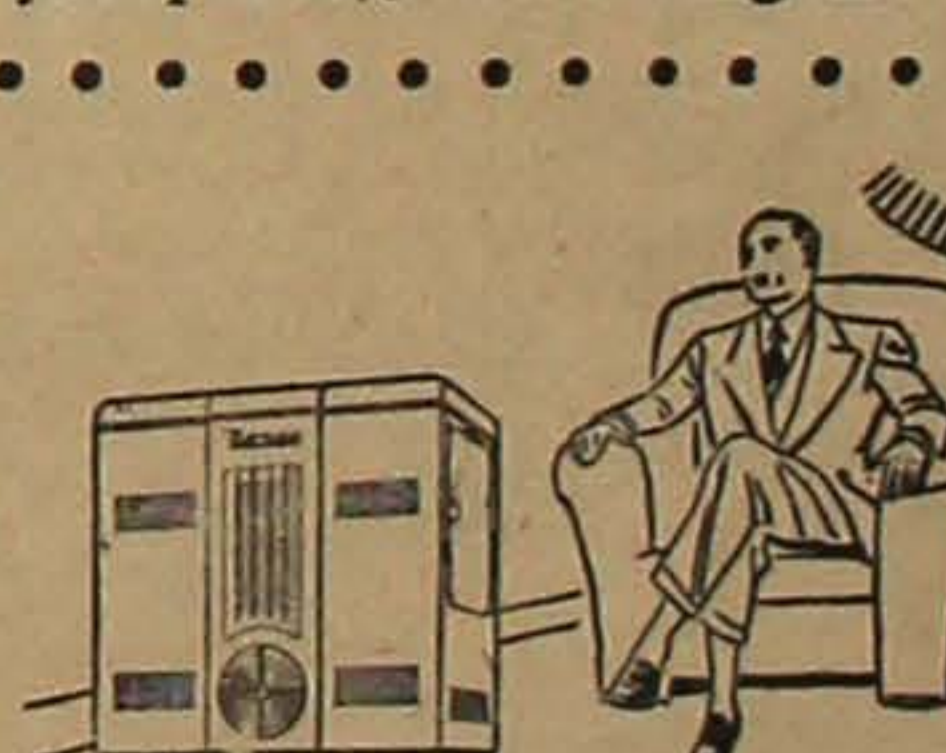
MAin 2275

... Invite you to have More Heat at Lower Cost so you may Live Better on Less. Like this—



WARM FLOORS are, of course, a great help to the health and happiness of the whole family. Norge Heaters provide warm corners as well as warm floors in homes up to 5-room size.

SAVING FUEL is actually "money in the bank." Big money!—due to Norge exclusive features like the L-shaped Heat Exchanger that gives you up to 40% more heating surface.



NO FUEL DUST, or dirty ashes, means a big saving in dusting, mopping, washing, cleaning of all kinds. This Norge Heater's exclusive "Whirlator" burns away every drop of fuel oil in a clean flame to save you work and time, as well as cash.

AUTOMATIC HEAT!—Get any temperature you want with a Norge Heater by just turning the knob. No fires to build. No drafts to control. No fuel or ashes to haul. Just relax and enjoy new comfort!

This great new Norge Oil-Burning Home Heater—has SIXTEEN SWEET advantages. Don't waste your money and health with an old style heater... See this different Heater today!

\$75 up

\$5 to \$20 allowance for your old stove

Pay by the Month!

SEE NORGE BEFORE YOU BUY

THE Sporting Thing

The Score Didn't Tell All the Story

In the last edition of this newspaper, the general drift of the Nisei-Chinese football story was that the Nisei ran all over the Chinese Americans last Sunday at Broadway playfield.

The Nisei Junior Vets—the fellows who were in actual grid combat, the fellows who had their faces dirtied in the mud—told us that the Chinese fought well and that the Chinese, too, had several outstanding stars.

Roy Mar, a two-year letterman at Garfield high school, was a rock-like bull on defense for the Chinese aggregation. "Roy stopped our line bucks time and again," said one of the Nisei Junior Vets. Mar, playing a roving center, had more than his share of dumping would-be Nisei touchdown producers.

Eugene Ko and Bill Chinn were two other Chinese lads who made the going rough for the Nisei Junior Vet backs.

Glen Yee, who was one of the whistle tooters, was unable to play for the Chinese team because of an injured knee. Yee, we understand, was to be the spearhead of a Chinese passing attack which was skipped that wet afternoon due to the slippery ball.

But, regardless of the score, 14-0, both the Nisei and the Chinese Americans had one whale of a time in the sea of mud.

Nyssa Remains Only Undeclared Team In Ontario Nisei Bowling League

ONTARIO NISEI BOWLING LEAGUE STANDINGS

(As of Nov. 13)

	W	L
Nyssa Bowling Center	8	0
Jaekel & Rogers I	7	1
Josephson & Son II	6	2
Tak's Cafe II	5	3
Josephson & Son I	4	4
Mutch Oil Co.	4	4
Oregon Slope	4	4
R. E. Lewis	3	5
Jaekel & Rogers II	3	5
Adrian Bowling Club	2	8
Mun Iseri Insurance	1	7
Tak's Cafe I	1	7

ONTARIO, Oreg., Nov. 20—Nyssa Bowling Center remained undefeated in the recently-opened Ontario Nisei Bowling league during the week of Nov. 11 and 12 here.

The center turned in a 4-0 forfeit victory over Adrian Bowling Club. George Sadamori of the center rolled a 561 series.

Top individual effort of the week was the 601 series posted by Yulehe Takai, anchor man of Jaekel & Rogers I which swamped Josephson & Son I by a 4-0 count. Takai's 601 was included in the team's 2693 series. Teammates George Hironaka (579), Shig Hironaka (518), Roy Hashitani (500) and Min Nakamura (495) also contributed towards the night's high mark.

Other hot bowlers were Tad Inouye (543) of Josephson & Son I, Chuck Maehara (560) of Tak's Cafe II, Saki Fujinaga (557) of Jaekel & Rogers II, and Sunny Takami (577) of Josephson & Son II.

The results follow:
OREGON SLOPE (3)—K. Morinaga 477, H. Morishita 410, G. Mo-

rishige 454, B. Kageyama 446, R. Sasaki 410; MUN ISERI INSURANCE (1)—G. Saito 522, M. Iseri 414, H. Yasuda 498, G. Doi 526, Dummy 450.
JAEKEL & ROGERS I (4)—R. Hashitani 500, S. Hironaka 518, M. Nakamura 495, G. Hironaka 579, Y. Takai 601; JOSEPHSON & SON I (4)—J. Wakagawa 452, T. Inouye 543, J. Inaba 426, Kendo Yasuda 470, Kay Yasuda 442.
MUTCH OIL (3)—F. Mizuta 527, S. Harada 477, T. Ogura 461, G. Hashitani 406, G. Morioka 425; TAK'S CAFE (1)—Y. Teramura 336, J. Maehara 387, H. Takahashi 518, T. Nakamura 466, K. Yamaguchi (two games) 355, Dummy (one game) 150.

TAK'S CAFE II (3)—H. Ogura 446, G. Morioka 513, S. Wada 406, C. Maehara 560, S. Uchida 469; JAEKEL & ROGERS II (1)—T. Mio 474, D. Iseri 353, T. Nobuyama 417, T. Iseri 429, S. Fujinaga 557.

JOSEPHSON & SON II (3)—M. Okuda 412, L. Inouye 474, T. Okita 464, G. Mizuta 523, S. Takami 577; R. E. LEWIS (1)—R. Ogura 479, C. Tanaka 487, H. Harada 499, I. Kamehige 394, R. Saito 476.

NYSSA BOWLING CENTER (4)—G. Sadamori 561, H. Kido 488, T. Kikuchi 484, L. Saito 440, K. Saito 515. Winner by 4-0 forfeit over Adrian Bowling Club.

Shanty Inn Cafe

"WHERE FRIENDS MEET"
110 12th Ave. O.A. 9677

NCL LEADERSHIP GOES BACK TO TACOMA'S P.S. LAUNDRY; N. W. TIMES DOWNS PSVGA, 2-1

Northwest Times' narrow 2-1 triumph over Puget Sound Vegetable Growers' Association enabled Tacoma's Puget Sound Laundry to win sole leadership in the Nisei Commercial league last Tuesday night in Main Bowl.

The Timesmen's two low men for the night, Tom Hirai and Yukio Kuniyuki, were the heroes. Hirai doubled in the tenth and Kuniyuki picked up the all-important spare on the final toss. Kaz Yamasaki (559), George Tanagi (538) and He-ro Nishimoto (517) kept the Nisei newspaper-sponsored outfit in the struggle.

On the other side of the ledger, PSVGA's George Ota and Morrie Yamaguchi were enjoying a healthy pin-swapping session. Ota bashed out a 559 series, and Yamaguchi, a 532.

Puget Sound Laundry, minus the services of Kaz Yamane, rallied to down Higashi's Mobile Service, 2-1. Frank Hidaka (519), Joe Asahara (517) and John Asahara (506) were the Tacomaites' big noises.

Very much capable and dangerous Main Drug squashed Cathay Post 136 to a 2-1 defeat. All members of the drug unit bowled well but especially strong were Nobu Takahashi (588) and Herb Furuta (559). Ed Yaplee (591) and Wally Poy (556) were the most troublesome legionnaires. Yaplee's series and game (215) were high for the night.

In other matches, Sakahara Insurance wiped out City Produce, 8-0; 12th Ave. Service upset Shanty Inn, 2-1; and Over the Top Beverage tripped International Realty 2-1.

High men were Rick Tanagi (554) of Sakahara's, Art Segimoto (550) of International, and Bill Tanaka (555), Tommy Namba (542) and Tak Shibuya (542) of Over the

Top.

The results follow:

PUGET SOUND LAUNDRY (2)—Joe Asahara 517, Shigeo 393, John Asahara 506, Tanabe 466, F. Hidaka 519; HIGASHI'S MOBILE SERVICE (1)—Hamasaki 444, Nishimoto 392, Higashi 469, Shimizu 484, Tsuboi 458.

NORTHWEST TIMES (2)—G. Tanagi 538, Nishimoto 517, Hirai 443, Yamasaki 559, Kuniyuki 435; PSVGA (1)—Iwasaki 479, Kiyohara 429, Ota 559, Yamaguchi 532, Maebori 442.

MAIN DRUG (2)—Furuta 559, T. Hidaka 502, Kimura 529, Tada 493, Takahashi 588; CATHAY POST (1)—Eng 467, Poy 556, Yaplee 591, Chinn 428, Goon 485.

TWELFTH AVE. SERVICE (2)—Inouye 462, T. Koga 469, Nagasawa 484, Takayoshi 454, Baba 500; SHANTY INN (1)—Kuranishi 425, Asaba 524, Arita 447, Urakawa 508, Tsuji 523.

SAKAHARA INSURANCE (3)—Roy Tanagi 454, Oyama 511, Rick Tanagi 554, S. Suyama 501, Fujiwara 497; CITY PRODUCE (0)—J. Nakashima 451, Ikeda 395, Obata 445, N. Suyama 473, Horuchi 512.

OVER THE TOP BEVERAGE (2)—Tanaka 555, Nitta 525, Ithashi 475, Namba 542, T. Shibuya 542; INTERNATIONAL REALTY (1)—Segimoto 550, O. Tsuchikawa 468, Yokoyama 526, F. Takagi 492, Nomura 498.

CASABA PREDICTIONS DUE

Starting with the next edition, THE NORTHWEST TIMES will publish a series of articles on the strength of the various teams entered in the Nisei Veterans Committee-sponsored basketball leagues.

Main Street Service

GAS - OIL - AUTO REPAIR
12th & Main St.
E.A. 9614

A Nisei Rendezvous

Chick's
Ice Creamery
625 Jackson St. EL 9136

Golden Pheasant Cafe

Best Chinese Food in Town
Seneca 9145 307 Sixth Ave. S.

JACKSON GROCERY

1803 Jackson St. E.A. 0603
Prop. Mrs. Hannah Mackawa

Auto, Fire, Liability INSURANCE

John S. Ogishima
318-6th Ave. So. MAIn 5156
Seattle, Wash.

Maneki

Sakiyaki
Tempura
Private Parties
MAIn 9723 304 6th Ave. So.

N. P. Hotel

306 6th Ave. S.
Y. FUJII
☆
Phone
MAIn 3952

Gyokko-Ken Cafe

508-510 Main St.
Seattle 4, Wash.

Numoto Again Paces SNGBO-Circuit Leading C.I.E.; Tad's Gardening, Led by Tamura, Does Well in CML

None of the first three teams in the City Merchants league—West Coast Printing, Jackson Grocery and Hattori Realty—was a ball of fire Thursday night in Main Bowl.

The hottest squad was fourth-place Tad's Gardening which boasted three 500-plus keggers in its 2-2 draw against Hattori's. Tad's Joe Tamura cleaned the strike area for the night's highest 553 series. The two others aiding Tamura in the assault against Hattori's were S. Sumioka (520) and T. Asaba (503). Ted Kuramoto of Hattori's rang up a 209 for the night's highest singles game.

West Coast Printing, the pace-setting aggregation, dumped Kashiwagi's Kubs, 3-1, and Nobu Kiyono (537) and Kenny Arita (525) were responsible for the triumph.

In other series, Jackson Grocery decided Seventh Ave. Service 3-1, and O.K. Cafe was okay in downing Richard's Jewelry, also by a 3-1 count. Best men in the last two mentioned struggles were Yo Maekawa (513) and Biff Ihashi (504) for Jackson Grocery, and Shig Takemura (500) for O.K. Cafe.

The results follow:
TAD'S GARDENING (2)—T. Asaba 503, T. Katayama 413, M. Shibuya 458, J. Tamura 553, S. Sumioka 520; HATTORI'S REALTY (2)—P. Suto 437, G. Naito 463, T. Kuramoto 501, B. Yamasaki 384, N. Akada 550.

WEST COAST PRINTING (3)—K. Arita 525, F. Nakagawa 493, P. Minato 413, S. Nakagawa 464, N. Kiyono 537; KASHIWAGI'S CUBS (1)—H. Takagi 441, J. Hayashi 470, F. Kanemori 496, S. Nakashima 405, B. Sugawara 498.

O.K. CAFE (3)—G. Miyazaki 426, S. Takemura 500, S. Hiroo 455, M. Nakamichi 488, K. Yamada 387; RICHARD'S JEWELRY (1)—T. Terada 389, J. Nakamura 386, S. Shimizu 463, T. Okada (two games) 215, Roy Kawaguchi 489, O. Edamura (one game) 155.

JACKSON GROCERY (3)—T. Nakata 444, Y. Maekawa 513, B. Nakata 455, R. Omoto 493, B. Ihashi 504; 7TH AVE. SERVICE (1)—T. Mizuki 469, N. Hirayama 461, J. Shiota 467, K. Tamura 418, S. Urakawa 454.

Repose and cheerfulness are the badge of the gentleman—repose in energy—Emerson.

MAIN DRUG CO.

Prescriptions Carefully
Compounded
Phone, MAIn 6647
522 Main St. Seattle 4, Wash.

Member of
Certified Independent
Grocers

DEARBORN

Cash Grocery
Mits Abe
Yoshito "Salty" Mizuta
We Deliver
725 Dearborn St. ELot 9169

DENTISTS

DR. S. FUKUDA
105 Jackson Bldg., MA. 3840
DR. K. HARADA
306 12th Ave. S. EA. 8443
DR. S. HIGASHIDA
1017 Jackson St. EA. 1000
DR. S. F. KANEMORI
670 Jackson St. MA. 9208
DR. H. MITSUMORI
114 Jackson Bldg. MA. 0589

Trim Tough Terrific

KIEKHAFFER
MERCURY
LIGHTNING

With proved
FULL-JEWELLED
POWER
Two speeds or almost
trailing proved Full-Jewelled
Power gives Mercury parts
and frictionless ride on
hills and roller bearings—
for longer life—superior
performance.
*Ball and Roller Bearings Throughout

Friendly HAB'S

Complete Sporting Goods
EL. 7038 815 Jackson St.

How They Rate

NISEI COMMERCIAL LEAGUE STANDINGS

(End of First Round)
(As of Nov. 17)

	W	L
P. S. Laundry (Tacoma)	22	11
Northwest Times	21	12
P.S.V.G.A.	21	12
Over the Top Beverage	20	13
Sakahara Insurance	19	14
Main Drug	17	16
Shanty Inn	17	16
International Realty	16	17
Higashi's Mobile Service	14	19
12th Ave. Service	12	21
Cathay Post	11	22
City Produce	9	24

NIGHT'S HIGH

Singles—Wally Poy, Cathay Post, 21K.

Series—Ed Yaplee, Cathay Post, 591.

CITY MERCHANTS LEAGUE STANDINGS

(As of Nov. 19)

	W	L
West Coast Printing	30	14
Jackson Grocery	27	17
Hattori Realty	24	20
Tad's Gardening	21	23
Seventh Ave. Service	20	24
O.K. Cafe	19	25
Richard's Jewelry	18	26
Kashiwagi Kubs	17	27

NIGHT'S HIGH

Singles—Ted Kuramoto, Hattori Realty, 209.

Series—Joe Tamura, Tad's Gardening, 553.

SNGBO STANDINGS

(As of Nov. 19)

	W	L
China Import & Export	34	10
Martha's Beauty Shop	28	16
Over the Top Beverage	27	17
Tokuda Drug	24	20
Stop 'n Shop	22	22
Takano Studio	21	23
New Chinatown Cafe	12	32
Gyokko Ken Cafe	8	36

NIGHT'S HIGH

Singles—Jean Numoto, C.I.E., 202.

Series—Jean Numoto, C.I.E., 556.

How weak a thing is gentility, if it wants virtue!—Fuller.

TERRY'S AUTO SERVICE

1202 Rainier Ave. EA. 9459
Gas-Oil—Auto Repair
MORIO TERAYAMA

INSURANCE

FRANK Y. OKADA
Automobile—Fire—Burglary
Window Glass—Public Liability
Health and Accident
505 Main St. SE. 0781

Richard's Jewelry

Expert Watch Repair
—Official N. P. Railroad Time Inspector—
Dr. Duncan Tsuneishi
Optometrist
218 4th Ave. So. Seattle 4, Wash. SE. 2131

Motorola Car Radio

Complete Automotive Repairing
Lubrication
Gas—Oil—Accessories
New Tires — New Batteries
7TH AVENUE SERVICE
701 Jackson St. EL. 9333 Seattle 4, Wash.
Charles C. Toshi — Ted K. Imanaka — George Koyama

TOKUDA DRUG

1724 Yesler GEORGE TOKUDA, Prop. CA. 3611
Prescriptions carefully compounded by
REGISTERED PHARMACISTS

"Favorite Nisei Fountain"

SERVING FAMOUS WELCOME GUEST ICE CREAM
DRUGS MAGAZINES GREETING CARDS
SUNDRIES

No. 500

SMITH
RICE MILL CO.
DEWITT, ARK.
COATED RICE
COATED WITH
GLASS AND TALC
REMOVE BY WASHING
BEFORE COOKING
POOD LEE, NET
1948

NORTH COAST

Importing Co. Supply Co.
515 Maynard W. 27 Main Ave.
Seattle 4, Wash. Spokane 8, Wash.
Tel. EL. 4833 Tel. MA. 3715

DISTRIBUTORS

SMITH 500 Blue Rose Rice
DAIKOKU Brand Rice
MARUSHO Shoya
KOKUSUI Shoya
TAKA Shoya
SHIRAYUKI Ajinomoto
HIME Udon

Come in! See the New 1948
Frigidaire
Electric Range

It's beautiful in design, far advanced in improvements and new conveniences. See how Frigidaire really makes all cooking Carefree Cooking.

- Extra-large porcelain oven.
- Radiant 5-speed cooking units.
- Cook-Master oven clock control.
- Double-Duty Thermizer cooker.
- Waist-high, smokeless type broiler.
- All-porcelain inside and out.

and many, many others

Model RK-10	\$199.75
Model RK-20	229.75
Model RK-40	269.75
Model RK-60	299.75

Hikida Furniture
818-20 Jackson St. ELot 2935
Res. Franklin 4755

Do your school shopping here and SAVE

You're at ease in the Best Dressed Circle

As Advertised in Leading Magazines

City Club
LUXURY TRED SHOES FOR MEN

48 Costly Hand Operations! Famous for action-eased comfort that only pre-flexed sole features can give. Let us demonstrate the great difference in comfort.

We check our fitting with X-RAY.

Urakawa's Toktow Shoe Co.
826 Jackson St. Seattle, Wash. SE. 9779

Trim Tough Terrific
KIEKHAFFER
MERCURY
LIGHTNING

With proved FULL-JEWELLED POWER

Two speeds or almost trailing proved Full-Jewelled Power gives Mercury parts and frictionless ride on hills and roller bearings—for longer life—superior performance.
*Ball and Roller Bearings Throughout

Friendly HAB'S
Complete Sporting Goods
EL. 7038 815 Jackson St.

Motorola Car Radio
Complete Automotive Repairing
Lubrication
Gas—Oil—Accessories
New Tires — New Batteries
7TH AVENUE SERVICE
701 Jackson St. EL. 9333 Seattle 4, Wash.
Charles C. Toshi — Ted K. Imanaka — George Koyama

TOKUDA DRUG
1724 Yesler GEORGE TOKUDA, Prop. CA. 3611
Prescriptions carefully compounded by
REGISTERED PHARMACISTS

"Favorite Nisei Fountain"
SERVING FAMOUS WELCOME GUEST ICE CREAM
DRUGS MAGAZINES GREETING CARDS
SUNDRIES

No. 500
SMITH
RICE MILL CO.
DEWITT, ARK.
COATED RICE
COATED WITH
GLASS AND TALC
REMOVE BY WASHING
BEFORE COOKING
POOD LEE, NET
1948

NORTH COAST
Importing Co. Supply Co.
515 Maynard W. 27 Main Ave.
Seattle 4, Wash. Spokane 8, Wash.
Tel. EL. 4833 Tel. MA. 3715

DISTRIBUTORS
SMITH 500 Blue Rose Rice
DAIKOKU Brand Rice
MARUSHO Shoya
KOKUSUI Shoya
TAKA Shoya
SHIRAYUKI Ajinomoto
HIME Udon

The Social Whirl

BEAUTIFUL BRIDE...ONTARIO, Oreg., Nov. 20—Miss Grace Shirashi, daughter of Mr. and Mrs. T. Shirashi, became the bride of Mr. Masateru M. Jio, son of Mr. and Mrs. S. Hirakawa of Wapato, Wash., at an impressive candlelight ceremony last Nov. 6 in the Ontario Methodist church. The Rev. Sadao Masuko officiated at the double-ring ceremony.

The bride, given in marriage by her father, wore a traditional white satin gown made en train with lace sleeves and yoke insets. The fingertip veil was held in place by a coronet of orange blossoms. Her only accessory was a single strand of pearls. She carried a spray of white spider chrysanthemums.



MRS. MASATERU JIO
—Harano Studio
Ontario, Oreg.

Miss Ilene Shirashi, sister of the bride, was maid of honor and Miss Beulah Shigeno, bridesmaid. They wore similar frocks of turquoise and gold taffeta and carried bouquets of yellow and lavender chrysanthemums.

Mr. Shizuo Kondo of Wapato was best man and the Messrs. Yosh Takehara, Jim Umemoto and Shingo Wada were the ushers.

The ushers lighted the candles while Mr. Frank Sakata played a program of wedding music. Miss Chiyoko Inouye sang "I Love You Truly", "Always", and "The Lord's Prayer".

After the wedding, a reception was held in the church parlors. Pouring and assisting were Mesdames Ted Takeshita, Tom Hashimoto, Frank Takeshita, and the Misses Yoshiye Otani, Kimi Takatori, Mary Nukida and Kiku Hishinuma.

For her going-away ensemble, the bride chose a grey crepe dress with black accessories and a corsage of stephanotis. After a honeymoon trip to Southern California, they will be at home in Wapato, Wash.

Out-of-town guests included the groom's parents, Mr. and Mrs. S. Hirakawa, Messrs. Jim and Joe Umemoto, Tosh Umemoto, Chuck Matsui, Akira Uchida and Kaoru Matsumura, Mrs. N. Kondo, Mr. K. Sakamoto, Mr. Shizuo Kondo, Mr. M. Sakamoto, Mr. and Mrs. Tom Sakamoto, Mr. and Mrs. K. Ono, Mr. Junji Ono, all of Wapato, Wash.; Mrs. I. L. Shaver and her daughter, Phyllis, and Mrs. Olive T. Bess, Caldwell, Idaho; and Mr. Y. Sumada, Los Angeles, Calif.

Before her marriage, Miss Grace Shirashi was honored at a surprise miscellaneous shower on Nov. 1 at Tak's Cafe in Ontario. After opening her gifts, she joined her friends in a Chinese dinner. Attending, besides the guest of honor, were the Mesdames Frank Sakata, Charles Maehara, Tom Hashimoto, Sadao Masuko, and the Misses Beulah Shigeno, Mary Sato, Sumiko Kanaya, Esther Ogura, Lola Sato, Sophie Tomita, Rose Mio, Kiku Hishinuma and Ilene Shirashi.

ANOTHER SANSEI...WAPATO, Nov. 20—The youngest member of the Wapato Sansei group is three-week-old Marshall Wada, who is "at home" with his parents, Mr. and Mrs. Masao Wada, and an older brother, Bryan. The newcomer joined the family group on October 30.

NICHIREN WEDDING... Miss Hattie Miyamoto, daughter of Mr. and Mrs. Miyamoto of Bellevue, was married to Mr. George Terai, formerly of Chicago but now of Seattle, last Nov. 6 in the Nichiren Buddhist church. The Rev. B. Oda officiated.

The bride's only attendant was Miss Miyuki Mizokawa of Bellevue. The best man was Mr. George Tokuda.

Miss Sachi Ueyegaki sang several selections, accompanied at the piano by Mrs. Michio Shimomura.

AL MAR'S
12th Ave. Food Market
CA. 0700 Free Delivery
118 12th Ave. Seattle

DOUBLE SHOWER...HOLLYWOOD, Wash., Nov. 20—A double stork shower was given for Mrs. Howard Sakura and Mrs. Charles Furuta by Mrs. J. DeYoung and Mrs. H. Rowan in the latter's home on Friday, Nov. 12. The room was decorated with storks and streamers from which hung a dainty pink and blue umbrella.

Games, refreshments and the opening of gifts highlighted the evening.

Those present besides the honored guest and hostesses were the Mesdames A. Tuckshury, V. Nicholl, T. Uyeda, G. Funai, K. Abe, W. Scott, H. Johnson, L. Requilman, L. Rowan, T. Funai, C. Clark, G. Hori, T. Olsen, A. Zackerson, A. Bustad, L. DeYoung, C. Anderson, B. Rown, McDonald, Pascoe and Kramlich and the Misses Elaine Olsen and Helen Yamamoto.

Unable to attend but who sent gifts were the Mesdames E. Gassan, H. McMahon, K. Funai, S. Yamamoto and K. Furuta.

BELLEVUE TROTH...BELLEVUE, Wash., Nov. 20—The beautiful home of Mr. and Mrs. J. M. Godsey of Bellevue was the setting for the marriage of Miss Mitsuye Hirota, daughter of Mrs. Chiyoko Hirota, to Mr. Tom Shigio, son of Mr. and Mrs. K. Shigio of Sumner, on Friday, Nov. 12. The Rev. G. Nishinaga officiated.

The bride, given in marriage by her brother, Mr. Tokio Hirota, was dressed in a traditional white satin gown styled with a marquise yoke and long closely-fitted sleeves. Her skirt swept into a full train and her fingertip veil was of illusion net. She carried a bouquet of orchids scattered with stephanotis.

The bride's only attendant, Miss Marian Tamura, wore a blue moire taffeta gown and had a bouquet of pink carnations.

Best man was Mr. Henry Shigio, brother of the groom, and the usher was Mr. Frank Shigio.

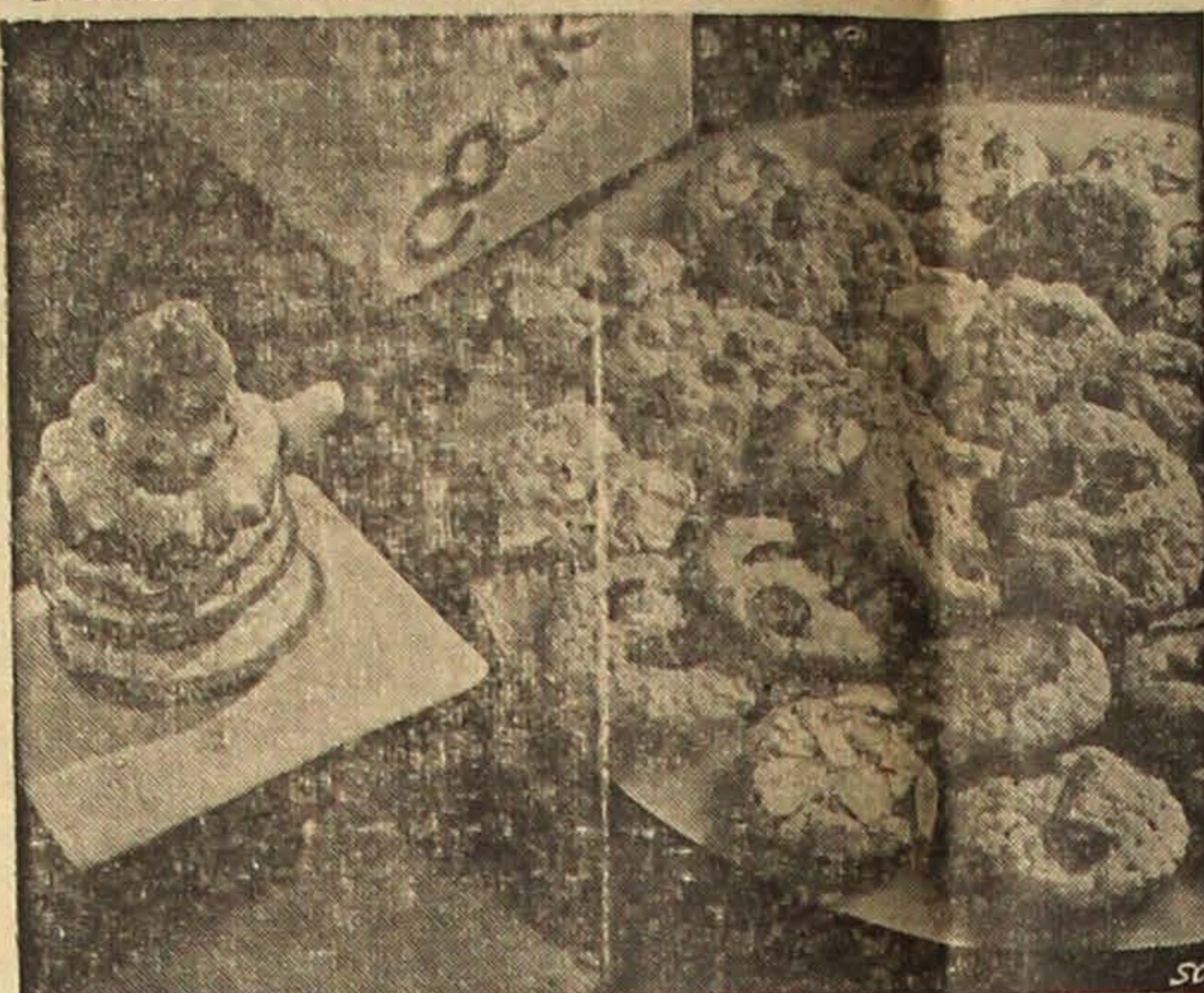
Mr. George Tamura sang "Always" accompanied on the piano by Miss Ruliee Ann Matsuo.

A reception was held after the ceremony in the Gyokko Ken Cafe. Mrs. Amy Matsuo was in charge of the wedding cake and Mrs. Tosh Inatsu, the guest book.

For going away, the bride wore a gray coat trimmed with mouton and had brown accessories.

After a two weeks' honeymoon in California, they will make their home in Sumner.

Make Your Own Oatmeal Cookie Mix



Traditionally, the holiday cookie jar should never be empty. This homemade oatmeal cookie mix—always ready for quick baking—will help you keep it filled during those busy days.

Easy to use, you can make this mix in just 20 minutes, then store it on the pantry shelf. Bake plain oatmeal cookies any time or add numerous variations.

For a special holiday touch, sprinkle shaved Brazil nuts over the cookies before baking.

Oatmeal Cookie Mix

Makes 8 dozen cookies

- | | |
|--------------------------|---|
| 3 cups sifted flour | 2½ cups sugar |
| 1 teaspoon soda | 1 cup shortening |
| 1 teaspoon baking powder | 3 cups rolled oats (quick or old fashioned, uncooked) |
| 2 teaspoons salt | |

Sift flour, soda, baking powder, salt and sugar together three times. Cut shortening into sifted dry ingredients until mixture resembles corn meal. Add rolled oats and mix well. Store in a covered container at room temperature.

To make 2 dozen cookies:

- | | |
|---------------------------|--------------------|
| 2 cups Oatmeal Cookie Mix | 1 tablespoon milk |
| 1 egg | 1 teaspoon vanilla |

Add egg, milk and vanilla to mix. Beat until well blended. Drop from a teaspoon onto greased baking sheet. Bake in a moderate oven (375°F.) 12 to 15 minutes.

Variations:

1. Add ½ cup chopped nuts, raisins, coconut, or chocolate chips to prepared batter. Bake as directed above.
2. Add 1 teaspoon cinnamon and ¼ teaspoon nutmeg to dry mix; blend well. Omit vanilla. Add egg and milk; mix and bake as directed above.

The Teen-Agers' Column

It looks like the Al Jolson boom is fizzing out. And me with a brand new album of his songs bought after the excitement following the movie "Jolson story."

I've been wondering why Jolson sounded so good one moment and so boring the next. I suppose it's just like the hit parade tunes. Jolson managed to recapture the imagination of the public for a fleeting moment, but he didn't have what it takes. What a Bing Crosby or a Frank Sinatra's got.

It's very very human for boys to brag about girls. You'd think from listening to any male that he could marry practically anyone he wants. The difference between one boy and another is one has the sense to keep his mouth shut about certain things and the other hasn't. I've heard some boys talk about very personal experiences. These

are the boys who find it necessary to kiss and tell. They're marked "dangerous" in the books of any sensible girl. Not because of what they say but the interpretation they put on some very harmless and innocent incidents.

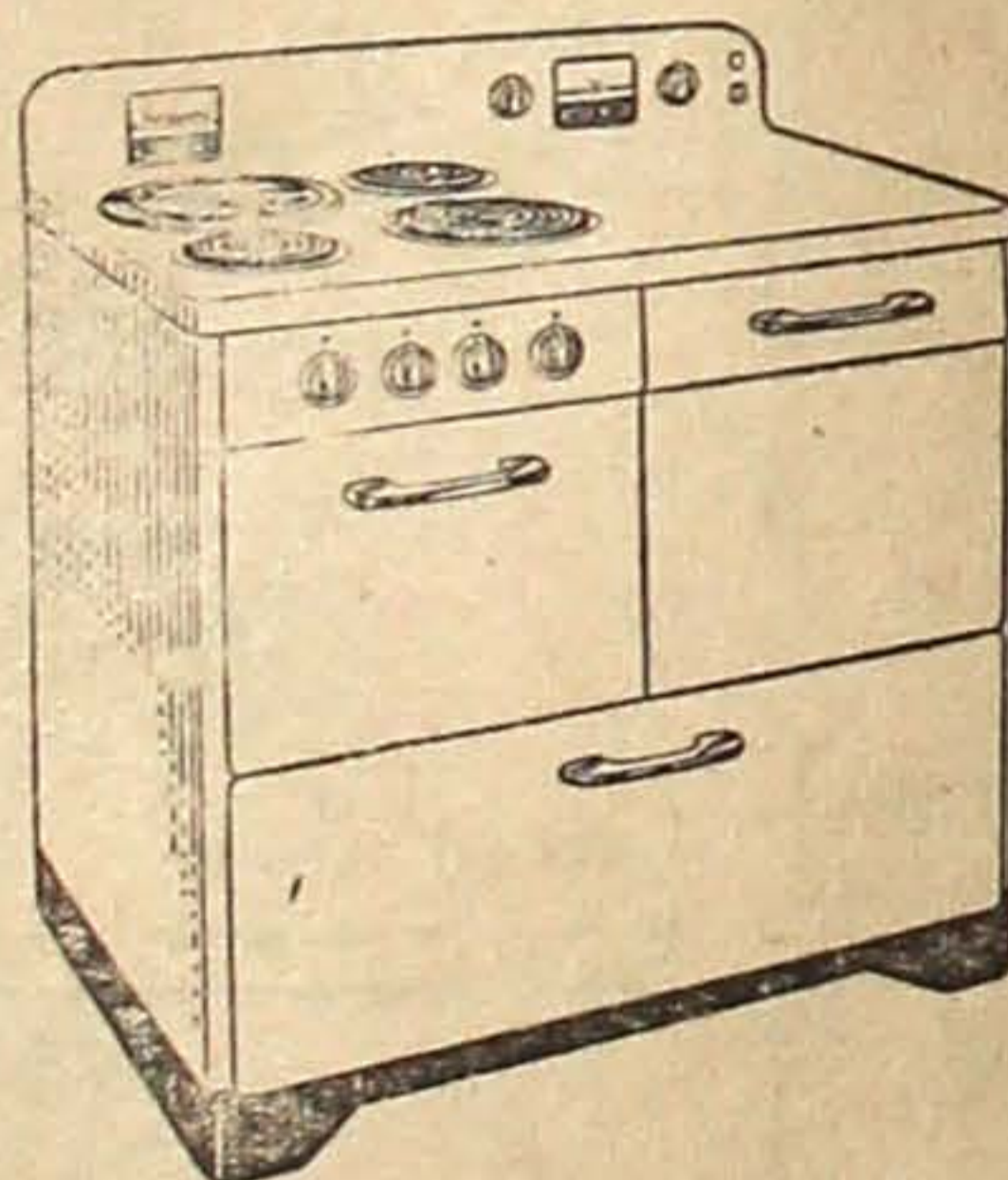
A clam isn't appreciated among girls but a boy who talks without discretion is appreciated even less.

—New Canadian.

Yesler Hardware & Plumbing Supplies

Kiyoshi Yasui
Bob Hikida
1713-15 Yesler EA-5660
Seattle 22 Wash.

America's Finest



HOTPOINT 1948 Economy Range

- Simplified Oven Temperature Controls.
- New Thrift Cooker.
- Convenience Outlet.
- More Storage Capacity with the Large Storage Drawer and Tilt-Out Bin.
- Drip Tray with Oven Cooking Chart.
- Porcelain Enamel Roasting-Broiling Pan.
- Indicating Switch Knobs.
- One-Piece Welded Steel.
- Porcelain Enamel Finish Inside and Out.

\$204.95

Hotpoint Electric Water Heater

- Only Hotpoint has the new pressurized direct contact calorid units.
- One piece Fiberglas insulation—fire proof, sag proof.
- Special \$20.00 trade in on water heaters for 30 days.
- Take this opportunity and install Hotpoint.

42 gal. \$147.95

52 gal. \$159.95

8.1 Cubic Ft. Refrigerator

- Speed Freezer.
- Flush door construction. Door does not protrude into the cabinet.
- Pop-Ice Trays.
- Porcelain interior.
- Chill Tray.
- One Year Warranty on Complete Refrigerator.

\$259.00

Terms, of course.



Tashiro Hardware Co.

(Near Third and Yesler)
109-113 Prefontaine Place
Main 8452

WAPATO CHURCH UNIT CHOOSES NEW LEADER

WAPATO, Nov. 20—Tom Sakamoto was chosen chairman of the Nisei Youth Fellowship of the Wapato Methodist Church at an election held recently.

Other members of the cabinet include: Charles Matsui, vice chairman; Grace Jio, secretary; and Mas Jio, treasurer.

Fumiko Iseri was appointed chairman of the program planning committee. Chairmen of other committees will be selected soon by the new cabinet.

WAPATO, Nov. 20—To honor Mr. and Mrs. Masateru Jio who recently joined the "Mr. and Mrs." ranks of Wapato, Methodist church members and friends are planning a potluck supper this Sunday, Nov. 21, in the local Methodist church.

The couple were married last Nov. 6 in the Community Methodist church in Ontario, Oregon. The bride is the former Miss Grace Shirashi, daughter of Mr. and Mrs. T. Shirashi of Ontario. The bridegroom is the son of Mrs. S. Hirakawa of Wapato.

Toys Pour Into Council Office

Fifty toys have already been contributed to the Jackson St. Community Council, the council's office manager, Mrs. Lilly Fujii, reported today.

The toys, collected by the council, will be given to needy children at Christmas time.

Among the items received at the council office are a scooter and a small car.

Experienced Hand

Yoichi Matsuda, who, with his wife, is now operating Cherry Cleaners, has had five years' experience in a dry-cleaning plant. He has trained in spotting, pressing, silk finishing, hat blocking and leather finishing, and has also worked for a short period as a spotter at Liberty Cleaner, a wholesale firm.

Matsuda's establishment is located at 2918 E. Cherry St., and the telephone number is FRospect 5610.

SUSUMI-BUTTERWORTH FUNERAL SERVICE
300 East Pine EL. 0558
After 6 p.m., call MA. 0949

Dyeing Helps Ban Budget Blues



Cover Girl Jackie Coplan is thrilled over way she's eased her budget troubles via home-dyeing. Here she is, proudly exhibiting head-to-toe wardrobe that got new life and color beauty with few dime boxes of all-fabric Tintex dye.

Ancillas Schedule Bridge, Bingo

A bridge and bingo game, sponsored by the Ancillas, will be held at 8 p.m. next Friday, Nov. 26, in the Maryknoll auditorium, 16th Ave. and Jefferson.

Assisting Josephine Yoshino, chairman, are Agnes Sasaki, publicity; Amy Taniguchi, bingo; and Sachi Hayashida, refreshments.

An admission fee of fifty cents per person will be used to purchase Christmas baskets for needy families.

Plan Huge Sale

In preparation for the gigantic Expansion Sale which will begin on Friday, Nov. 26, Willner's Bargain Stores at 2212 Jackson Street and 2306 E. Union will be closed next week from Monday through Thursday, Nov. 22-25.

The stores will be closed so that the goods can be remarked and rearranged for the sale.

IKEDA & CO. WHOLESALE GROCERS
SEneca 2196
600 6th Ave. S.
Seattle 4, Wash.

TENGU SLATES FOURTH FISH DERBY HERE

The Japanese Sportsmen's Tengu club's fourth blackmouth salmon derby will start this Sunday, Nov. 21, and will continue for seven more Sundays after that, it was announced today.

The derby Sundays are Nov. 21, Nov. 28, Dec. 5, Dec. 12, Dec. 19, 1948 and Jan. 9, Jan. 16, Jan. 23, 1949.

Judges will be Kubota, Uji, K. K. Kawaguchi, Yoshoka, H. Kawahara, Iwata, I. Bappu, G. Tokuda, K. Minami, Kashino, Gojio, Tagawa, Toyoi, M. Shibata, Yokoyama, Ikeuchi, S. Okamoto, Kitayama, K. Waba, Tomita and N. Shibata.

Entrance fee will be three dollars and fifty cents which will include the 1949 club membership due.

The prizes which the fishermen will vie for are: first prize—\$225 or more in cash or merchandise plus a trophy; second prize—\$125 or more in cash or merchandise; and third prize—\$85 or more in cash or merchandise.

Fifteen to twenty additional prizes will be awarded provided enough money is subscribed to this derby. Only one prize will be awarded to each contestant.

A special prize of five dollars in cash will go to persons landing the heaviest salmon (any species) on each of the eight Sundays.

WHAT TO DO?
Rollerskate-off that turkey and stuff! Attend the skating party sponsored by the White River Basketball Club at the Rollerland in Renton from 10:30 p.m. to 12:30 a.m. on Thursday, Nov. 25.

Let him that would move the world, first move himself.—Socrates.

109 18th So. MI. 1320

Rainier Garage
Auto Repair
H. Furumoto Res. MI. 0832

Main Shokudo
All Kinds of Japanese Foods
505 Main St. SE. 9429

International Realty

Real Estate and Insurance
Business Opportunities
Notary Public

James M. Matsuo

659 Jackson St.

Seattle 4, Wash.

MA. 1522

NEW Frigidaire Fully Automatic Washer

with "LIVE-WATER" ACTION!
and—
ALL THESE FEATURES!

- Fills and empties automatically.
- Washes 8 lbs. of clothes in less than a half-hour; cleaner, whiter.
- Gives two "Live-Water" rinses.
- Spins clothes damp dry; some ready for ironing immediately.
- Self-balancing—no bolting down.
- Self-cleaning—porcelain inside and out.
- Can be hand controlled for special jobs.

Come In! See a Demonstration!

Place order now for earliest delivery!

ALSO SEE THE NEW—

Frigidaire Electric IRONER
for better, faster, easier ironing

Frigidaire Electric CLOTHES DRYER
for quick, automatic drying indoors



Place order NOW for earliest delivery

Hikida Furniture

818-20 Jackson St.

ELiot 2935
Res. FRanklin 4755