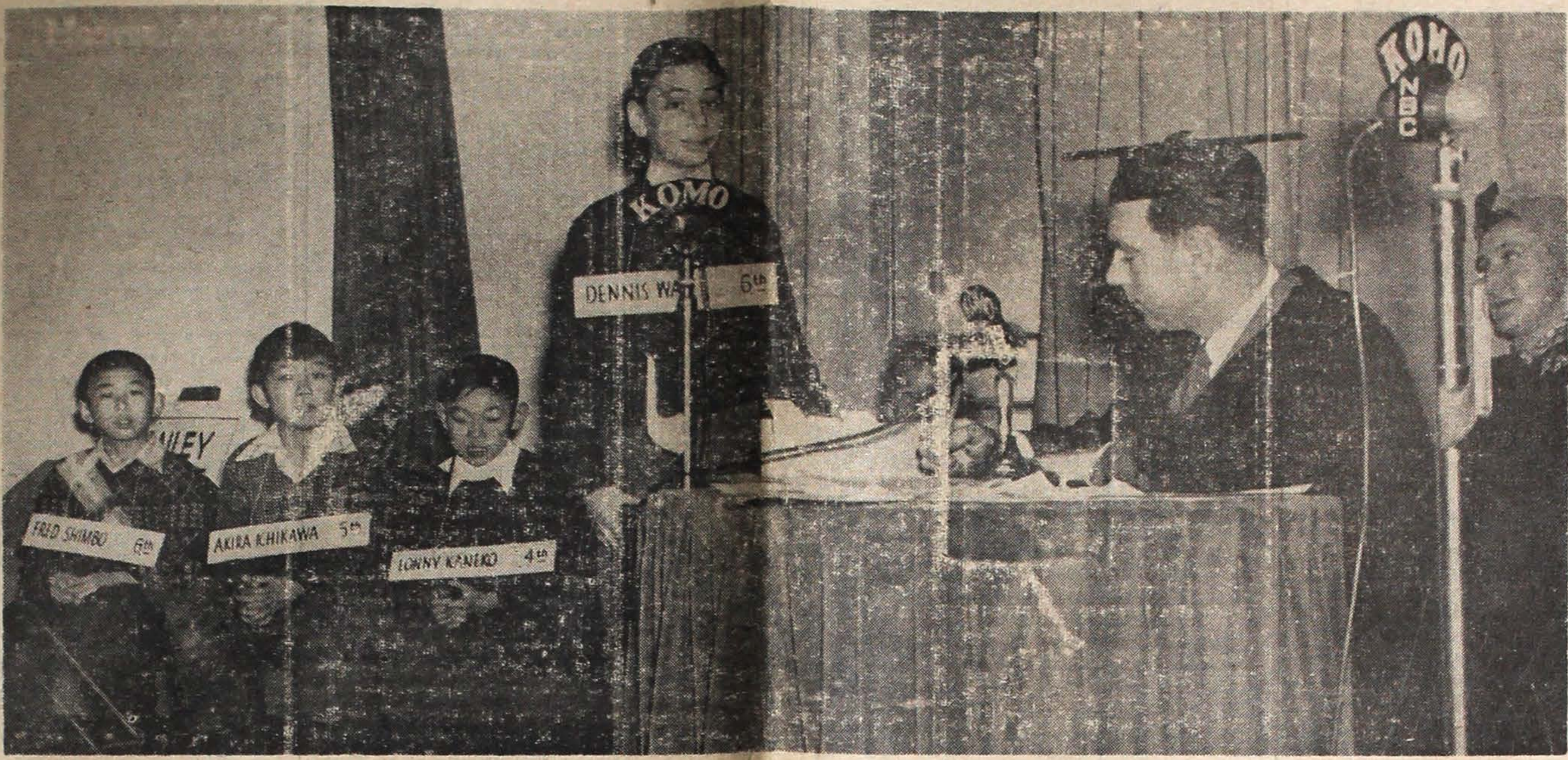


BAILEY BOWS TO LAFAYETTE IN QUIZDOWN

By STAFF WRITER
Bailey Gatzert bowed to Lafayette in the third Post-Intelligence-KOMO Quizdown last Saturday in the P.I. auditorium by a 850 to 650 score, but the pupils of the most cosmopolitan school in the city did remarkably well in view of some of the tough questions posed to them.
Lafayette's contestants — Linda Mabry, Eileen Doolittle, Muri Barker, Billy Campbell, Edson Pederson and Diane Jangaard—won an R.C.A. Victor table model 8 x 71 radio for their school, and the Bailey Gatzert quiz kids—Harlan Newsom, Donald Asias, Dennis Wait, Lonny Kaneko, Akira Ichikawa and Fred Shimbo—accepted a Rand-McNally International Edition World Atlas for their school.
A P.I.-KOMO medal was awarded to each contestant.
The questions asked by the quizmaster, Millard Ireland, KOMO news editor, were as follows:

BAILEY GATZERT (First half)
Question—How long does it take the earth to make one revolution?
Reply by Harlan Newsom—24 hours. (right).
Question—What is an Indian woman called?
Reply by Donald Osias—Squaw. (right).
Question—How do we find the area of a rectangle?
Reply by Dennis Wait—I don't know. (Wrong, answer is: multiply width by length.)
Question—What kind of vessel operates under water?
Reply by Lonny Kaneko—Submarine. (right).
Question—What does pacific mean?
Reply by Akira Ichikawa—Is it an Indian name? (Wrong, answer is: It means peaceable.)
Question—What is the highest court in the country?
Reply by Fred Shimbo—Supreme court. (right).
(Second half)
Question—On board ship, what does taking a sounding mean?
Reply by Harlan Newsom—I don't know. (Wrong, answer is: It means to find out how deep water is.)
Question—Why does an aquarium need plants?
Reply by Donald Osias—Fish eat them. It purifies the water. (Wrong, answer is: Plants make oxygen for fish to breathe.)
Question—Of what use to a flower is its smell?
Reply by Dennis Wait—I don't know. (Wrong, answer is: It helps to attract insects so the flower can



OK of Promotions for Two Nisei Vets Will be Considered by Senators

WASHINGTON, D. C., Jan. 26—Among several hundred Regular Army promotions that were sent to the Senate for confirmation were those of two former officers of the 442nd Regimental Combat Team, the Washington Office of the JACL Anti-Discrimination Committee learned today.
Nominated for the permanent rank of captain were Kenji Hino of Chicago, Illinois, and Thomas Masao Kobayashi of Phoenix, Arizona.
Capt. Hino is a native Chicagoan. He is a graduate of the University of Illinois, with a degree in electrical engineering. He entered the Army as an enlisted man and received his commission as a Second Lieutenant in the Signal Corps July 10, 1943.
Assigned to the Headquarters Company of the 100th Battalion of the 442nd Infantry, he first served as motor officer and then as company executive officer. He saw service in the Rome-Arno, Po Valley, North Apennines, and Rhineland campaigns.
In addition to his four battle stars, he wears the Purple Heart, the Presidential Distinguished Unit Badge, the Combat Infantryman's Badge, the American Theater Ribbon and the Victory Medal.
He was promoted to First Lieutenant in the Army of the United States January 17, 1946 and was commissioned as a First Lieutenant

QUIZ KIDS — Dennis Wait, sixth grader of Bailey Gatzert, answers query put by quizmaster Millard Ireland, KOMO news editor with cap, in the third Post-Intelligence-KOMO Quizdown last Saturday in the P.I. auditorium between pupils of Lafayette and Bailey Gatzert schools. The others awaiting their turn are, left to right, Fred Shimbo, also sixth grader; Akira Ichikawa, fifth grader; Lonny Kaneko, fourth grader, and Don Osias (behind microphone, fifth grader. Missing is Harlan Newsom, fourth grader.

On the extreme right is Mrs. Phil F. Walling, president of Interlake Parent-Teachers Association, who was one of the three judges. The other judges were M.B. (Mike) Mitchell, city councilman, and W. Virgil Smith, assistant superintendent of Seattle public schools. Lafayette won the Quizdown, 850 to 650.
—Exclusive Northwest Times Photo.

Evacuation Claims Queries Answered Through Courtesy of JACL-ADC

(Editor's note: This is the thirteenth of a series of questions and answers on the evacuation claims law prepared by Edward J. Ennis, JACL Anti-Discrimination Committee special counsel, and released by the Washington Office of the JACL ADC as a public service. This series is based on actual questions asked of this office.)
(Any reader who has general questions relating to the law itself or to procedural matters is invited to address a letter with a stamped, self-addressed return envelope to the Washington Office of the JACL Anti-Discrimination Committee, Evacuation Claims Section, 300 Fifth Street Northwest, Washington 2, D. C. Questions of general interest may be produced in this series without personal identification.)
(No questions involving the legality or value of specific claims can be answered.)

1. Q. Before evacuation, my sister legally owned (but did not occupy after her marriage) a house worth at least \$5000. This house was occupied by myself and family. The property was originally purchased by my father and because he was technically an alien, the property was placed in my sister's name. As the only son in the family, I continued to occupy the house with my wife, child, and mother, exercising all the duties and expenses of ownership although not a legal owner. At the time of evacuation the house was not immediately sold because of the lack of time and because we thought that the restrictions soon might be lifted. In 1944, despairing of ever being able to return to California and learning that the tenants thru neglect and carelessness had allowed the house to run down, we sold the



TINY ENTERTAINER—A Japanese odori was started by fourth grader Hatsumi Kawamura of Bailey Gatzert school during the intermission period of the third P.I.-KOMO Quizdown Saturday in the P.I. auditorium. Miss Kawamura was unable to finish her performance because the record-player "went haywire".

—Exclusive Northwest Times Photo.
\$5,000 CHECK FORWARDED
CHICAGO, Ill., Jan. 26—The Chicago JACL chapter has forwarded a check for \$5,000 to the national JACL-ADC headquarters, according to Taihei Matsunaga, chairman. This sum is part of more than \$10,000 received in contributions to date.

Classified Ads
FOR SALE: 1946 Buick special 4-door sedan. Excellent condition. cheap. SE. 4471 or PR. 7109, 899 Western Ave.

PIN CLASSIC TO OPEN HERE THIS FRIDAY

Nisei kingpins of the tenpins from as far south as San Francisco, Calif., and as far east as Salt Lake City, Utah, will roll into town this week to participate in the third annual Northwest Nisei Classic which will be held Jan. 28, 29 and 30 in Main Bowl, Third and Main, Seattle.
The classic will officially open Friday, Jan. 28, when the mixed doubles step on the alleys to pick

- HOW WE RATE 'EM**
Men's Teams
1. Okada Insurance, Salt Lake City, Utah.
 2. Jaekel & Rogers, Ontario, Oreg.
 3. Over the Top Beverage, Seattle, Wash.
 4. Shima Transfer, San Francisco, Calif.
- Women's Teams
1. China Import & Export, Seattle, Wash.
 2. Over the Top Beverage, Seattle, Wash.

up their strikes and spares and splits for a hunk of the estimated total cash prize of \$1,400.
Okada Insurance, defending championship team from Salt Lake City, once again will reign as the "team to beat" in the men's team event. Okada's will present its stellar lineup of Tad Sako, Sho Hirazumi, Doc Kurumada, George Kishida and Maki Kaizumi who are currently far ahead in the Salt Lake JACL pin circuit race.

NOTE, WOMEN BOWLERS
All women bowlers are urged to note the change in squad time and the addition of the women's doubles event. This addition, according to Fred Takagi, Main Bowl manager, automatically adds an event trophy to the top girl kepler.
Pressing the Mormon City stars will be Ontario's Jaekel & Rogers, Seattle's Over the Top Beverage and San Francisco's Shima Transfer. Scintillating strike artists on these teams are Yulene Takal of Ontario, Bill Tanaka of Seattle, and Fuzzy Shimada of San Francisco. The "select group" may find disturbing opposition from Seattle's Main Drug and Shanty Inn, both of which boast a well-balanced aggregation. Main Drug's Nobu Tanaka.
(Continued on Page Three)

Nisei Calendar

JANUARY						
SUN	MON	TUE	WED	THU	FRI	SAT
						1
2	3	4	5	6	7	8
9	10	11	12	13	14	15
16	17	18	19	20	21	22
23	24	25	26	27	28	29

27—Skating party to be sponsored by Bellam's from 10:30 p.m. to 12:30 a.m. in Rollerland Skating Rink.
29—30—Annual Northwest Nisei Classic in Main Bowl
30—Northwest Nisei Classic dance at Trianon Ballroom.
29—NVC Community Basketball league will sponsor a mixer from 8 p.m. to 12 midnight in the Seattle Buddhist auditorium to raise funds for an official scoreboard.

FEBRUARY						
SUN	MON	TUE	WED	THU	FRI	SAT
						1
2	3	4	5	6	7	8
9	10	11	12	13	14	15
16	17	18	19	20	21	22
23	24	25	26	27	28	29

12—Annual "Sweetheart's Ball" to be sponsored by Cathay Post 186 and its auxiliary in the Knights of Columbus hall, 722 E. Union.
18, 19 and 20—Tentative dates for Northwest Times' third annual Northwest Invitational Basketball Tournament.
18-19—Maryknoll church benefit bazaar.
21—Maryknoll Adrians will have their roller-skating party at Rollerland Rink.



MAIN BOWLING ALLEY
The MAIN Place to Bowl!
306 Main St. MA. 9399
Presents
Its Third Annual Northwest Nisei Classic
Friday, Saturday, Sunday, Jan. 28-29-30
Entry fee: Men \$5 per event, Women \$3 per event
Estimated total cash prizes—\$1,400
Entry deadline: Sunday, January 23
TOURNAMENT BALL (informal)
Sunday, Jan. 30
From 8:30 p.m. to 12 midnight.
At Trianon Ballroom
Everyone Welcomed
\$1.50 per person. \$2.50 per couple.

The Northwest Times

THE ONLY ALL-ENGLISH NISEI NEWSPAPER
IN THE PACIFIC NORTHWEST
Established January 1, 1947

Published every Wednesday and Saturday of each week.
Editorial offices at 304 Main St., Seattle 4, Wash. Phone
SEneca 5594. Office hours: 9 a.m. to 6 p.m. daily except
Sundays and holidays.

Editor & Publisher Budd Fukel
Associate Editor Hideo Hoshide
Art Editor Tom Tsutakawa

SPECIAL REPRESENTATIVES

TACOMA—Kimi Fujimoto 1710 Fawcett Ave., Tacoma, Wash.	Wapato—Mrs. Kara Kondo P. O. Box 816, Wapato, Wash.
PORTLAND—Tom Okazaki 7404 N. Denver, Portland, Ore.	ONTARIO—Mrs. James Watanabe Payette, Idaho
SPOKANE—Norio Wakamatsu W. 325 Trent Ave., Spokane, Wash. Bus. MAin 6712	PUYALLUP VALLEY—Mrs. Arthur Milton, Wash.

Subscription Rates	Classified Ads
One month \$.75	Minimum charge 60 cents
Six months 4.25	Per word insertion 5 cents
One Year 8.00	

Bailey Gatzert Bows to Lafayette In P.I.-KOMO's Third Quizdown

(Continued from Page One)

be fertilized.)
Question—The Strait of Juan de Fuca connects Puget Sound with what body of water?
Reply by Lonny Kaneko—Pacific ocean. (right).
Question—What is a domestic animal? Give an example.
Reply by Akira Ichikawa—A horse, a donkey. (Wrong, answer is: A domestic animal is a tame animal—dog, cat, horse, cow, etc.).
Question—What is the difference between an orchestra and a band?
Reply by Fred Shimbo—A band doesn't have string instruments. (right).

LAFAYETTE

(First half)

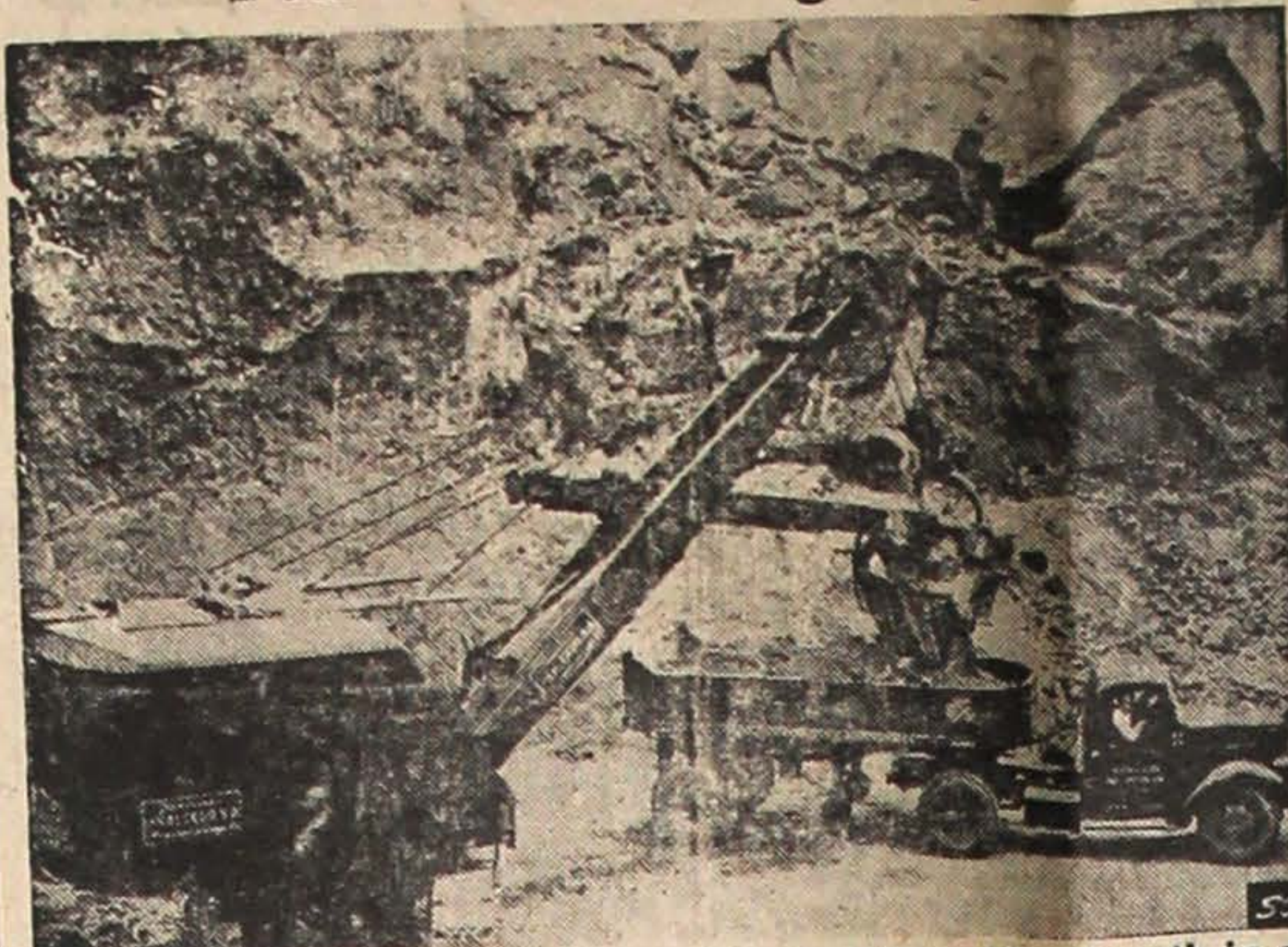
Question—What is the capital of Washington?
Reply by Linda Mabry—Tacoma. (Wrong, answer is: Olympia.)
Question—What makes the bread rise when you make it?
Reply by Eileen Doolittle—Yeast. (right).
Question—What does the abbreviation D. C. stand for when you say Washington, D. C.?
Reply by Muri Barker—District of Columbia. (right).
Question—What mountains are west of Seattle?
Reply by Billy Campbell—Olympics. (right).

Question—What is a decade?
Reply by Edson Pederson—Ten years. (right).
Question—What are raisins made of?
Reply by Diane Jangaard—Dried grapes. (right).

(Second half)

Question—How do spiders get their food?
Reply by Linda Mabry (after several good hints)—With their webs. (right).
Question—What do you do when you see a letter "f" above the staff in singing?
Reply by Eileen Doolittle—You sing softer. (Wrong, answer is: You sing louder).
Question—Explain what the subject of a sentence is.
Reply by Muri Barker—The thing you are talking about. (right).
Question—How far apart are the goal lines on the football field?
Reply by Billy Campbell—100 feet. (Wrong, answer is: 100 yards.)
Question—What is the most common march time?
Reply by Edson Pederson—Four-four. (right).
Question—When we say a mountain is so many feet high, where is the bottom line that we measure from?
Reply by Diane Jangaard—Sea level. (right).

Pan-American Highway



An American-made power shovel loads a huge bite of earth in a Fruehauf dump trailer as work progresses on the Pan-American Highway stretching between Laredo, Texas and Panama. Many thousands of loads such as this must go into each mile of the slender highway ribbon that will eventually tie the commerce and customs of Latin America closer to those of the United States.

Powder Box Beauty Salon

KIKUE HAGIMORI

MARY TSUCHIKAWA
26 King St. Seattle, Wash. MAin 2973

Maneki

Sukiyaki Tempura Private Parties
MAin 9723 304 6th Ave. So.

Main Shokudo

All Kinds of Japanese Foods
505 Main St. SE. 9429

Phone ELIOT 6863

Dr. Terrance M. Toda
OPTOMETRIST
- 676 Jackson Street

TOKUDA DRUG

1724 Yesler GEORGE TOKUDA, P. O. CA. 3611
Prescriptions carefully compounded by REGISTERED PHARMACISTS

"Favorite Nisei Fountain"
SERVING FAMOUS WELCOME GUEST ICE CREAM
DRUGS MAGAZINES GREETING CARDS
SUNDRIES

NISEI FOTOSHOP

308 20th Avenue
"Complete Photographic Service"
Commercial George Morihira P.K. 7927 Camera Repair Kats Abe EA. 3551

- Corsages
- Plants
- Wedding Decorations
- Funeral Designs
- Cut Flowers



HEIDI'S FLOWER SHOP

"ARTISTRY IN FLOWERS"

708 1/2 Madison MAIN 3547



North Coast Importing Co.

515 Maynard Ave., Seattle 4, Wash.
Tel. EL. 4833 P.O. Box 3006, Seattle 14.

Just Arrived!

1948 New Crop Smith 500 (Blue Rose) Rice now available at your favorite grocery stores.

Also

1948 New Crop "Daikoku" Brand California Extra Fancy Rice.

The Quality of both brands are always guaranteed.



'WE MUSTN'T RELAX, SAYS T B OFFICIAL

"We must not relax our efforts until tuberculosis is eradicated from every community, everywhere," Dr. James E. Perkins, managing director, National Tuberculosis Association, told the more than two hundred persons attending the annual meeting of the Anti-Tuberculosis League of King County, in the New Washington Hotel last week.

Eradication of tuberculosis is now a realistic goal because of new tools like streptomycin and B.C.G., Dr. Perkins said. However, he warned that we must not be too optimistic about a declining death rate. Tuberculosis in the 1900's was first cause of death—now it is seventh.

Tatsuda Admitted To Minn. Bar

MINNEAPOLIS, Minn., Jan. 26—Charles Tatsuda, attorney, is the first Nisei and possibly the first American of Oriental extraction, to be admitted to the Minnesota Bar, according to the Midwest Regional JACL office.

Tatsuda, an active member of the Twin Cities UCL chapter of JACL, is a native of Ketchikan, Alaska, and was a student at the University of Washington. He received his law degree from the University of Minnesota and is married to the former June Kawakami of Fresno. Tatsuda's new offices will be located at 1422 West Lake Street, Minneapolis 8, Minnesota.

Pick Key Workers

The key leaders of women's activities for the Seattle-King County Red Cross chapter's 1949 fund raising campaign have been named by the Mesdames Harold H. Hartman and Earl A. Phillips, co-chairmen of the women's division for the drive, according to Newman H. Clark, general drive chairman. The drive opens March 1.

How weak a thing is gentility, if it wants virtue!—Fuller.

Chick's Ice Creamery

625 Jackson St. EL. 9136

Golden Pheasant Cafe
Best Chinese Food in Town
SEneca 9145 307 Sixth Ave. S.

Kitayama Chosen Rishso Leader

Kit Kitayama replaced Jim Akutsu as president of Rishso YBA as the result of the Jan. 16 election in the Nichiren Buddhist temple.

Kitayama's officers are Akutsu, vice president; Tosh Akagi, corresponding secretary; Mits Hara, Naoko Anzal, recording secretaries; Tetsu Tsutoba, treasurer; Kach Akagi, historian; Mich Akagi, tribune chairman; Chuck Ikeda and Maeda Ikeda, social chairmen; Hideo Konodo, publicity chairman; and Sakiko Tsutoba, musical chairman.

More on Claims

(Continued from Page One)

assembly center. We asked WRA to get these goods out for us but they refused to do so. So we had to get this stuff out of storage ourselves (at our own expense), but then we had on place to put it, so we had to store it again, and it is still in storage. It would cost an awful lot of freight to have it sent to us. What happens to expenditures like these?

A. It would appear that storage expenses and the expense of transporting the goods from storage to your home are losses directly due to the evacuation and you should claim these amounts.

3. Q. While we were in camp, we had to ask a lawyer "outside" to sell for us a beautiful gem, which he did very cheaply. Do we have a claim on this and if so, how much?

A. You should claim the difference between the fair value of the gem and the amount you got for it.

4. Q. I went to considerable expense in preparing to enter camp. For example, I bought 1000 vitamin pills, and also bought sleeping bags for everyone in our family. This was because we had heard that in camp we would have to sleep on the floor since there would be no beds. We also purchased many other things. Are these expenses claimable?

A. It is a doubtful and unsettled question whether expenses such as these will be considered as a loss of real or personal property. If the amount is substantial the only way to obtain a determination is to file a claim.

SANGHA PICKS H. NISHIMURA FIRST PREXY

Hiroyuki Nishimura has been elected president of the newly-organized Lotus Sangha, a group comprised of young adults and young married Buddhists of the local Buddhist temple.

Other cabinet members are Mamoru Takashima and Takako Yoda, vice presidents; Ruth Suzuki, secretary; and Shigetoshi Ishikawa, treasurer.

Nichiren Slates March Parley

Seattle's Nichiren Buddhist temple which will be host next August to the second post-war convention of the Nichiren YBA of America, is making plans today under the co-chairmanship of Jim Akutsu and Tetsu Tsutoba, according to Ken Morrison, Nichiren Buddhists from Portland, Ore., and Los Angeles, Sacramento and San Francisco, California are expected to attend the local gathering.

CARD OF THANKS

We wish to thank our many friends for their offerings and kindness extended during our recent bereavement.
Thomas Matsudaira and family

Rest and cheerfulness are the badge of the gentleman—repose in merrily.—Emerson.

109 18th So. MT. 1520

Rainier Garage

Auto Repair

T. Furumoto Res. MI. 0832

WED & CO.

WHOLESALE GROCERS
SEneca 2196
600 6th Ave S
Seattle 4, Wash.

International Realty

Real Estate and Insurance
Business Opportunities
Notary Public

James M. Matsuzaka

659 Jackson St. MA. 1522
Seattle 4, Wash.

Westinghouse Laundromat

saves up to 10 gallons of water a load



Exclusive!

Only the Westinghouse Laundromat Automatic Washer gives you the new WATER SAVER CUTS WATER CONSUMPTION TO THE BONE

BUY ON PROOF!

INSTALLS ANYWHERE!
NO BOLTING!
NO VIBRATION!

PROOF 1. Saves Water. Exclusive Water Saver measures water to size of the load. All you do is set the dial.

PROOF 2. Washes Cleaner. Exclusive, gentle but thorough action washes cleaner. Soiled water drains away from clothes, not through them.

PROOF 3. Ends Washday Work. Automatically washes, triple rinses, damp-dries, cleans itself, shuts off.

Here's How You Get Proof: Phone us and make arrangements to have a load of your clothes washed in the Laundromat free!

The Laundromat costs \$299.95

CHIARA APPLIANCE CO.
CHIARA JEWELRY CO.

612-614 Jackson St.

MAin 2275

Patronize Your Advertisers

Motorola Car Radio
Complete Automotive Repairing
Lubrication
Gas—Oil—Accessories
New Tires—New Batteries
7TH AVENUE SERVICE
701 Jackson St. EL. 9853 Seattle 4, Wash.
Charles C. Toshi — Ted K. Imanaka — George Koyama

YESLER APPLIANCE
"WILL" SHIOMI
Sales & Service
Licensed Electrician
Expert Radio Service
1720 Yesler Way EAst 5015

Anna Kay's
Beauty Salon
110 14th Ave.
Phone EA. 7157

Martha's Beauty Shop
MARTHA IKEDA
124 13th Ave.
Shop—EAst 6660

Star Food Products
Sumio Nagamatsu
516 Main St.
ELIot 8u70

West Coast Printing Co
TOMITA BROS.
514 Main St. MA. 0233

GOSHO
DRUG CO.
656 JACKSON ST.
PHONE SE. 9150

PAUL S. KASHINO
New York Life Ins. Co.
Insurance Bldg.
2nd & Madison
Res. EA. 2508 Bus. EL. 0609

We sell all kinds of beer,
champagne and mixers.

JACKSON
BEVERAGE
Jackson St. Seattle
Call EL. 1555 for delivery
Joe Tsujimoto Roy Okada

William Y. Minbu
ATTORNEY & COUNSELOR
132 Jackson Bldg.
318 6th Ave. S.
Phone MAin 2619
Res. PProspect 2306

TORU SAKAHARA
Attorney-At-Law
INSURANCE
318-6th Ave. S. SE. 3226
Seattle 4, Wash.

JAEKEL ONE HOLDS TIGHT TO PIN LEAD

OREGON NISEI BOWLING LEAGUE STANDINGS (As of Jan. 21)

NIGHT'S HIGH Singles—George Hironaka, Jaekel & Rogers I, 246.

ONTARIO, Oreg., Jan. 26—Jaekel & Rogers I shut out Jaekel & Rogers II, 4-0, to hold its slim one-game margin over second-place Nyssa Bowl in the Ontario Nisei Bowling league last week-end here.

The results follow:

NYSSA (4)—G. Sadamori 543, H. Kido 498, R. Sadamori (one game) 127, J. Saito (two games) 328, L. Saito 400, K. Saito 445; TAK'S CAFE II (0)—Inouye 370, D. Mio 485, S. Wada 415, C. Maehara 483, Dummy 150, J. Mizuta (two games) 314.

Singles Classic to be New Feature Of Third National Trundling Joust

SALT LAKE CITY, Utah, Jan. 26—A Singles Classic of 7 games over 14 alleys will be an added feature of the 3rd National JACL Bowling Tournament at Salt Lake City, March 4, 5 and 6, it was announced this week by Choppy Umemoto, national tournament chairman.

Plans are rapidly being completed for the tournament with letters being mailed out this week to all bowling leagues by Tournament Secretary Bill Honda. According to Honda, some 40 teams are expected to try to dethrone the Champion Okada Insurance Team of Salt Lake City, and share in the cash prizes which will amount to more than \$2,500 in addition to trophies.

Third Pacific Northwest Boat Show Booked for Feb. 19-27 in Armory

Billed as "The west's great marine event in the boating capital of the nation", the third annual Pacific Northwest Boat Show has been scheduled for February 19 to 27 in the new Seattle Armory, Jack Hickman, show chairman for the Pacific Northwest Marine Dealers' Association, announced today.

"Last year's Seattle Boat Show rained national acclaim," Hickman reports, "and already the third annual show has outstripped the second annual both in number and value of exhibits and entertainment features."

Marine exhibits booked for this year's show will jam the acre-and-one-quarter Armory floor and necessitate an overflow display of the newest in pleasure and commercial craft outside at the Armory entrance, Hickman declares.

Together with the commercial exhibits, educational displays and a series of special events are being planned to point up that by virtue of superlative cruising waters and the greatest concentration of boat-ownership in the world, the Puget Sound area is the boating capital of the nation.

will try to top are Harley Kusumoto's 676 singles mark, the doubles record of 1191 established by Tak Fujiwara and Mush Matsumoto, and Shorty Tanaka's all events total of 1786. All these bowlers were from Chicago last year, but with Shorty Tanaka now competing in Los Angeles, it is expected that Chicago will have a difficult time dominating the tournament as last year.

Word comes from Hawaii that a special AJA tournament is being held to pick the top bowlers to send to the tournament, and they will head for Salt Lake determined to make their trip worth while.

Since not all bowling league addresses are known, Secretary Bill Honda urged that all teams and individuals desiring to enter the Tournament write to him direct at 243 West First South, Salt Lake City, Utah. Honda pointed out that the sooner the approximate number of entries were determined, the sooner the program could be made up to insure a smooth running tournament which would afford the maximum pleasure and best playing conditions for all participants.

Cage Standings (As of Jan. 23)

CLASS AA, CLASS A, CLASS B, GIRLS

MERCURY TRIPS WHITE RIVER IN CLASS A A TILT

Mercury had to be at its best—and it was!—when its men put the skids on White River in a Class AA basketball game last Friday night in the Buddhist gym.

Main Bowl's Northwest Nisei Classic To be Inaugurated This Friday Night

(Continued from Page One) Jaekel & Rogers, Oriental Cafe and Tak's Cafe, Ontario, Oreg.; Josephson & Sons, Payette, Idaho; Wapato, Wapato, Wash.; Puget Sound Laundry, Tacoma, Wash.; Three J's, Portland, Oreg.; and Over the Top Beverage, Main Drug, Sakahara Insurance, International Realty, Shanty Inn, Northwest Times and City Merchants All-Stars, all of Seattle, Wash.

THE SCHEDULE Friday, Jan. 28 7 p.m.—Mixed doubles. Saturday, Jan. 29 5 p.m.—Men's teams. 7 p.m.—Men and women's teams. 9 p.m.—Men's teams. 11 p.m.—Men's doubles. Sunday, Jan. 30 9 a.m.—Men and women's doubles. 10:45 a.m.—Men's doubles. 12:30 p.m.—Men's singles. 1:50 p.m.—Men and women's singles. 3:10 p.m.—Men's singles. 4:30 p.m.—Men's singles. 8:30 p.m.—Tournament ball in Trianon ballroom, Third Ave. and Wall St. Curt Sykes and his 12-piece orchestra to play at this informal dance.

Cancelled Tilts Rescheduled

Cancelled basketball games of Sunday, Jan. 23, will be played off on Thursday, Jan. 27, and Wednesday, Feb. 9, in the Buddhist auditorium, it was announced today by league director Henry Yorozu.

THURSDAY, Jan. 27 In Buddhist Gym 7 p.m.—Starlettes vs. Lotus (G) 8 p.m.—Monarchs vs. Midgets (B) 9 p.m.—FCY vs. Savoys (A)

WEDNESDAY, Feb. 9 In Buddhist Gym 7 p.m.—Lancers vs. Comets (A)

GIRLS' CAGE NOTE All games involving five girls will be changed from 9 to 8 p.m. as of February so teams opposing them are asked to note the change and make necessary adjustments.

Utah Cage Joust Set March 24-26

SALT LAKE CITY, Utah, Jan. 26—The dates for the 14th annual Intermountain Invitational Basketball Tournament have been set for March 24, 25, and 26. The locale will be the Pioneer Stake Gym in Salt Lake City.

This tourney, under the sponsorship of the Salt Lake JACL Basketball Association, is considered the longest running Nisei cage meet in the nation and is also the largest of its kind, now covering five western states—Utah, Idaho, Oregon, Washington and Colorado. Negotiations are under way to include California in this year's contest.

Tokuda Drugs of Seattle, Wash., is the defending championship team and its men are expected to return to Salt Lake City in March in an attempt to add a second leg to the long coveted JACL perpetual trophy.

Past winners of the tournament besides Seattle are the Ogden Nippons, Topaz All-Stars, Topaz High School, Salt Lake Nippons, Denver Marusho Miks, and the Salt Lake Harlem A. C. Of these, only the Denver and Harlem quintets are now in existence, with the latter needing but one more victory to retire with the award.

Rissho Will Plan Table Tennis Meet

Nichiren Buddhist church's Rissho club, through its corresponding secretary Toshi Akagi, today announced that it will sponsor its second annual Table Tennis tournament during the month of March.

First meeting of all the team representatives will be held at 7:30 p.m. Monday, Feb. 14, in the Nichiren Buddhist church. Entrance fee will be fifty cents for each contestant.

A team will consist of either three girls or three boys, according to Miss Akagi. Names and addresses of team members must be submitted at the Feb. 14 meeting, she added.

Our Armed Forces need young leaders...top notch specialists... JACKSON GROCERY 1803 Jackson St. Es. 0683 Prop. Mrs. Hannah Mackawa

All-Stars Capture 1st Half Crown

MID-COLUMBIA NISEI BOWLING LEAGUE STANDINGS (Final, first half)

All Stars 36 24 Odell 34 26 Oak Grove 31 29 Parkdale 31 29 Dee 28 32 Dallesport 20 40

HOOD RIVER, Oreg., Jan. 26—The All-Stars copped the first-half championship of the Mid-Columbia Nisei bowling league last week-end despite their 1-3 loss to Parkdale. Oak Grove whitewashed runner-up Odell, 4-0, to help the cause.

Intelligence is a luxury, sometimes useless, sometimes fatal. It is a torch of firebrand according to the use one makes of it.—Caballero.

Omori with 169.9 Heads 'Big 10'

HOOD RIVER, Oreg., Jan. 26—Porky Omori with a 169.9 average is leading the "Big Ten" in the Mid-Columbia Nisei Bowling league. Others in the "Big Ten" are Mits Takasumi 163.1, George Imai 157.2, Hitoshi Imai 155.2, Hiro Kawachi 153.3, Yori Tambara 153.3, Koe Nishimoto 153.3, Min Asai 152.3, Chuck Akiyama 151.9, and Taylor Tomita 151.4.

AL MAR'S 12th Ave. Food Market

Shantv Inn Cafe "WHERE FRIENDS MEET"

Member of Certified Independent Grocers DEARBORN Cash Grocery

Mits Abe Yoshito "Salty" Mizuta We Deliver 725 Dearborn St. ELot 9169

SKIS SKI RENTALS SKI EQUIPMENT Friendly HAB's Complete Sportings Goods EL 7038 815 Jackson St.

Over the Top Beverage

Three Stores to Serve You. 414 Main SE. 5878 107 Washington SE. 9125 607 Yesler SE. 9233 Frank Russo, Prop.

NATCO WAR SURPLUS STORE Also BIG SAVINGS ON Work Sox Work & Dress Shoes Sweaters NORTH AMERICAN TRADING CO.

Local Basketball Schedule

SUNDAY, Jan. 30 In Buddhist Gym 1 p.m.—Rissho vs. Fife (B) 2 p.m.—Fife vs. Lotus (G) 3 p.m.—Savoys vs. Main Bowl (A) 4 p.m.—Savoys vs. Fife (AA) TUESDAY, Feb. 1 In St. Peter's Gym 7 p.m.—Cathay Juniors vs. Monarchs (B) 3 p.m.—Anna Kay's vs. Chicks (G) 9 p.m.—Starlettes vs. U. W. Coeds (G)

Richard's Jewelry Expert Watch Repair Official N. P. Railroad Time Inspector Dr. Duncan Tsuneishi

215 4th Ave. So. Optometrist Seattle 4, Wash. SE. 2131

Yesler Hardware & Plumbing Supplies Kiyoshi Yasui Bob Hikida 1713-15 Yesler EA. 5660 Seattle 22, Wash.

NEW PHILCO Television CONSOLETTA It's here from Philco—the Leader! The New Philco square-inch picture... clear, bright and sharp... on a geous mahogany console... cabinet for perfect eye-level viewing. Sensationally low-priced! with Automatic Tuning \$359.50 Plus federal tax. 20% down Hikida Furniture 318-20 Jackson St. ELot 2938 Res. FRanklin 4755

FRANK HATTORI REALTY Res. MINor 0934 304-6th Ave So. Seattle 4, Wash.

THE NEW 1949 REMINGTON Portable Typewriter 94.50 with case 10.00 down Plus Tax Eminent educators and psychologists proved, by nationwide tests, that students using a typewriter get better grades in all their subjects. Start your boy or girl toward a brighter tomorrow. Buy the new 1949 Remington Portable today! Carrying case available

W. NAKAMURA CO. Phone SE. 4716 664 Jackson St. Seattle, Wash.

519 Jackson St. New Suntan Pants specially priced at \$2.95 B-15 Type Jackets special now at \$9.50 & \$14.50 Work Sox Work & Dress Shoes Sweaters SENeca 6976

The Social Whirl

WEDDING BELLS . . . Miss Masako Tada, daughter of Mr. and Mrs. G. Tada of Highline, and Mr. Kinichi Kodama, eldest son of Mr. and Mrs. K. Kodama of Sunnydale, were married last Sunday, Jan. 23, at a double-ring ceremony in the Japanese Baptist Church with the Rev. Emery E. Andrews officiating. The altar was beautifully decorated with arch and lattice covered with greens and yellow chrysanthemums, and baskets of white gladiol and candelabras.

The bride, who was given in marriage by her father, was lovely in a traditional gown of heirloom satin, fashioned with a sweetheart neckline and front panels edged in Valenciennes lace ending in a flowing train. Her veil of fingertip length was of candelit illusion held by a heart-shaped tiara. She carried a bridal spray of baby orchid centered with a large lavender orchid.

Miss Yuri Tada, sister of the bride, was the maid of honor. She wore a lavender slipper satin gown similar to that of the bride's, with a sweetheart neckline and a braided lavender coronet in her hair. She carried a spray of yellow roses and white chrysanthemums.

Miss Kriss Kodama, sister of the groom, was the bridesmaid. Dressed in a turquoise satin gown similar to the one worn by the bride, with a turquoise satin braided coronet, she had a spray of red roses and white chrysanthemums.

Little Penny Beppu, flower girl, wore a lavender gown and yellow roses in her hair and carried a Colonial bouquet of white chrysanthemums and yellow roses.

Mr. Ted Imanishi was the best man, and Messrs. Jiro Oyabe and Kiyoshi Tada, brother of the groom, were the ushers.

Miss Yoshia Doi sang "Because" and "O Promise Me", accompanied by Mrs. Mutsu Homma at the piano. Mrs. Homma also played the wedding march.

Miss Sallie Onishi was in charge of the guest book. The Misses Jun Kumakura, Mary Nagasawa, Yuri Kodama, Yoshiko Kitayama and Mrs. Nobu Terao cut the wedding cake at the reception which was held in Kang Nam Cafe with Mr. K. Mayeno as master of ceremony. The speakers were Miss Tomi Kuni Isugu and Messrs. Tome Terao and Saito.

For going away, the bride chose a wool blue sharkskin suit with light blue accessories.

The baishakunin were Mr. and Mrs. H. M. Hayasaka.

SATURDAY SHOWER . . . A baby shower was held for Mrs. Hiroyuki "Lefty" Ichihara on Saturday, Jan. 22, in the home of Mrs. Isamu Aoki. Hostesses were Mrs. Isamu Aoki and Mrs. Shigeru Kiba.

Those present besides the honored guest and hostesses were the Mesdames George Tokuda, Noboru Nakagawa, George Hayashi, Shozo Kiyomizu, Tak Muramoto, Henry Miyake, Dick Setsuda, Rue Uyeda, Paul Kadoguchi, Motoi Naito, Yosh Yoshizumi and Kenny Nakatani and the Misses Hide Shimono, Kaoru Ichihara and Dorothy and Bessie Suto.

Refreshments and games were enjoyed by all.

'Greatest Story Ever Told'



Probably the most honored radio program ever aired is "The Greatest Story Ever Told", the dramatic presentation of the teachings of Christ heard every Sunday evening, 6:30 p.m., EST, over the ABC network. This program, though sponsored by The Goodyear Tire & Rubber Company, carries no commercial announcements, and is offered purely as a public service program.

Now in its third season, the program has received plaques, awards and honors in all categories, with many special awards in addition. Among the outstanding ones are awards by the National Association of Public Relations Counsel; Brotherhood of Christians and Jews; National Radio Conference; National Family Week; Special Award from Variety; and others. Most recent award, given the program by Magazine Digest, is being accepted by John K. Hough, director of advertising of Goodyear (right), from M. Simmons, publisher of Magazine Digest, which selected the program as best in the religious category.

In making the presentation, Mr. Simmons said: "Magazine Digest is particularly pleased to give the first of its Good Radio Awards to 'The Greatest Story Ever Told', which remains unexcelled in the field of religious programs."

Basketball Sked

(Continued from Page Three)

THURSDAY, Feb. 3
In Buddhist Gym
7 p.m.—Midgits vs. Fife (B)
3 p.m.—Crows vs. Lancers (A)
9 p.m.—FCY vs. Greenhouse (A)

FRIDAY, Feb. 4
In Buddhist Gym
7 p.m.—Anna Kay's vs. WWG's (G)

SUNDAY, Feb. 6
In Buddhist Gym
1 p.m.—Monarchs vs. Fife (B)
2 p.m.—Fife vs. U. W. Coeds (G)
3 p.m.—FCY vs. Lancers (A)
4 p.m.—Class AA playoff game

MONDAY, Feb. 7
In Buddhist Gym
7 p.m.—Starlettes vs. WWG's (G)
8 p.m.—Comets vs. Main Bowl (A)

TUESDAY, Feb. 8
In St. Peter's Gym
7 p.m.—Midgits vs. Rissho (B)
8 p.m.—U. W. Coeds vs. Lotus (G)
9 p.m.—Fife vs. Chicks (G)

THURSDAY, Feb. 10
In Buddhist Gym
7 p.m.—Chicks vs. U. W. Coeds (G)
8 p.m.—WWG's vs. Lotus (G)
9 p.m.—Fife vs. Anna Kay's (G)

FRIDAY, Feb. 11
In Buddhist Gym
7 p.m.—FCY vs. Crows (A)
8 p.m.—Lancers vs. Main Bowl (A)

SUNDAY, Feb. 13
In Buddhist Gym
1 p.m.—Greenhouse vs. Savoy's (A)
2 p.m.—Class B championship game between first and second-round winners.
3 p.m.—Class AA championship game.

MONDAY, Feb. 14
In Buddhist Gym
7 p.m.—Crows vs. Main Bowl (A)
8 p.m.—Starlettes vs. Anna Kay's (G)

TUESDAY, Feb. 15
In Buddhist Gym
7 p.m.—Chicks vs. Lotus (G)
8 p.m.—Greenhouse vs. Comets (A)

WEDNESDAY, Feb. 16
In Buddhist Gym
7 p.m.—WWG's vs. U. W. Coeds (G)
8 p.m.—Anna Kay's vs. Lotus (G)
9 p.m.—Starlettes vs. Lotus (G)

FRIDAY, Feb. 18
In Buddhist Gym
8 p.m.—Class A championship game.
9 p.m.—Girls' championship game

Area Homemakers Offered Courses At YWCA; Classes Start Feb. 7

Homemakers in this area may register this week for a wide range of sports classes to be offered by the Y. W. C. A. during the new term which starts February 7.

Early enrollment is advisable, in order to allow time for a Y. W. medical appointment, according to Lucille Lang of the Health Education department. A check-up is required for such classes as swimming, badminton and other strenuous activities, but is not necessary for ballroom or square dancing.

Miss Lang added that nursery facilities for preschool children will be available from 1 to 3 p.m. on

Tuesdays, Wednesdays and Thursdays to women participating in Y. W. classes at that time. The fee will be 75 cents per child for one hour, and 50 cents for two hours.

Both daytime and evening classes will be given for the beginner, intermediate and advanced swimmers, with recreational dip periods scheduled regularly for both men and women. Afternoon swim classes are also available for teenagers, and Saturday classes for children 9 to 12 years old.

Gym courses stressing body conditioning and proper exercise provide additional help on individual diets and problems, Miss Lang said.

Ballroom and square dancing classes are open to both men and women. In addition, a Square Dance club meets from 8:30 to 10 p.m. every Tuesday, and ballroom instruction is offered junior high students through the West Seattle branch, Northwest center and the Central Y. W.

Badminton, tennis, golf and senior life saving will also be given during the new term as well as the popular "Personality Workshop," sewing, cooking, ceramics and other subjects.

For further information about time schedules and fees, call EL 4800 extension 6. Y. W. C. A. is a red feather agency.

Twin Cities UCL Elects Officers

MINNEAPOLIS, Minn., Jan. 26—Tomo Kosobayashi has been re-elected president of the Twin Cities UCL (United Citizens League) chapter of the JAEL, it was announced this week here.

Other members of the cabinet are George Yamagita, first vice president; Min' Yoshida and Frank Yanari, second vice presidents; Eunice Torii, recording secretary; Marian Kawakami, corresponding secretary; Dr. George T. Nishida, treasurer; and Margaret Matsu-shita, historian.

Yanari and Miss Torii are from St. Paul, while the others are from Minneapolis.

Cong. Church Sets 'Japan Day'

A Japan day with the girls' doll festival as a motif will be held on Sunday, Feb. 27, in the Seattle Japanese Congregational church it was learned today.

Mrs. Saibo Fujii will be in charge of the serving of dinner to 100 persons at the race conference which is slated for Jan. 30 in the Japanese Congregational church, according to plans laid out by the Nisei Women's Fellowship.

INTERLUCTORY DIVORCE DECREE GRANTED

Hiroshi from Etsuko Sasaki.

Gyokko-Ken Cafe
508-510 Main St.
MA. 3662
Seattle 4, Wash.

TAKANO STUDIO
HENRY Y. MIYAKI
Photographer
668 Jackson St.
Seattle 4, Wash.
Phone MA. 8186
CA. 8952

NCL Bowling Schedule

TUESDAY, Feb. 1
Alleys 1 and 2—P. S. Laundry vs. Higashi's.
Alleys 3 and 4—Cathay Post vs. Main Drug.
Alleys 5 and 6—Shanty Inn vs. 12th Ave. Service.
Alleys 7 and 8—International Realty vs. Over the Top Beverage.
Alleys 9 and 10—N. W. Times vs. PSVGA.
Alleys 11 and 12—Sakahara's vs. City Produce.

THIRD ROUND Tuesday, Feb. 8
Alleys 1 and 2—Shanty Inn vs. International Realty.
Alleys 3 and 4—City Produce vs. Over the Top Beverage.
Alleys 5 and 6—N. W. Times vs. Cathay Post.
Alleys 7 and 8—Main Drug vs. Sakahara's.
Alleys 9 and 10—P. S. Laundry vs. 12th Ave. Service.
Alleys 11 and 12—Higashi's vs. PSVGA.

TUESDAY, Feb. 15
Alleys 1 and 2—P. S. Laundry vs. Sakahara's.

TUESDAY, March 1
Alleys 1 and 2—N. W. Times vs. Higashi's.
Alleys 3 and 4—International Realty vs. City Produce.
Alleys 5 and 6—Shanty Inn vs. P. S. Laundry.
Alleys 7 and 8—12th Ave Service vs. Main Drug.
Alleys 9 and 10—Cathay Post vs. Sakahara's.
Alleys 11 and 12—PSVGA vs. Over the Top Beverage.

TUESDAY, March 8
Alleys 1 and 2—Cathay Post vs. 12th Ave. Service.
Alleys 3 and 4—Shanty Inn vs. Sakahara's.
Alleys 5 and 6—Main Drug vs. International Realty.
Alleys 7 and 8—City Produce vs. PSVGA.
Alleys 9 and 10—Over the Top Beverage vs. Higashi's.
Alleys 11 and 12—P. S. Laundry vs. N. W. Times

NEW RICHMOND HOTEL
(Second Largest) Seattle, Wash.
Opposite both railway depots. Fourth at Main St.
Special rates for groups or Families.
Write for rates.

Central Cleaners
PICKUP & DELIVER
918 Pine St. Se. 6318
Frank Fukano

Sagamiya & Co.
524 MAIN ST.
MAIn 7551

KANNO CO.
EDDIE KANNO
Repair Radio
Washing Machine
Electrical Appliances
MA. 2160 606 Main St.

Co-op Radio
Home & Car Radio Service
Free pickup and delivery
Shig Akada
1457 Jackson CA. 2125

Yesler Way Auto Service
BEN FUKUTOMI JACK KUDO
COMPLETE AUTOMOTIVE SERVICE
HEADLIGHT ADJUSTMENT
COMPLETE BRAKE SERVICE
CA. 9561 17th and Yesler Way

JOHNNY'S DRY CLEANERS
Cleaning-Pressing-Dyeing
Alterations
JOHN FUNAI
E. Ast 9632
1310 Yesler Way

MAIN FISH CO.
WHOLESALE
Pier 49
Foot of Washington St.
Seattle 4, Wash.
ELiot 0681

Frank's Jewelry
617 Jackson St.
Seattle, Wash. EL. 8377
FRANK Y. KITAMOTO

MAIN DRUG CO.
Prescriptions Carefully Compounded
Phone MAIn 6647
522 Main St. Seattle 4, Wash.

SUSUMI-BUTTERWORTH FUNERAL SERVICE
300 East Pine EL. 0558
After 6 p.m., call MA. 0949

JACKSON FURNITURE
● General Electric Agents
● Fuller Paint Products
● Home & Hotel Supplies
● Linoleum
● Window Shades
650 Jackson SE. 0465
Seattle, Wash.

Better Fit MEANS Better Posture

WEATHER-BIRD Arch Helper SHOES

Proper fitting shoes fail to give proper bodily support. Spare your child future foot ill... give him the advantages of these scientifically designed shoes.

We check our fitting with X-Ray

Urakawa's TOKTOW SHOE STORE
826 Jackson St. SE. 7076
Seattle, Wash.
Store hours: 9 a.m. to 7 p.m., week days.
9 a.m. to 9 p.m., Saturdays.

Come to Church

Every church is requested to send in its notices by Tuesday noon of each week so that the changes may be made accordingly and in time for the Wednesday editions of that week.

BAPTIST
8:45 a.m.—Sunday School.
10 a.m.—Church service.
11:15 a.m.—Nisei worship service.

11:15 a.m.—Nursery during Young People service in the Broadway nursery building.
7:30 p.m.—BYF.
Okazaki classes from 8 to 9 p.m. on Mondays.

BUDDHIST
10 a.m.—Sunday School. Masue Kihara, chairman. Dharma class, receptionist group.
11 a.m.—Young people's devotional service. Junior boys will be in charge. Lotus girls will sing, and the Rev. Masunaga will speak.

CONGREGATIONAL
10 a.m.—Issei worship service.
10 a.m.—Sunday School for nursery, kindergarten, beginners, primary and juniors. New boys' class in primary department.
11 a.m.—Nisei worship service.
8 p.m.—Bible study class for Nisei every Monday.

METHODIST
10 a.m.—Sunday School and Issei worship service.
11 a.m.—Nisei worship service.
7:30 p.m.—Young people's fellowship.

MARYKNOLL
9 a.m. and 10:30 a.m.—Low Mass. Benediction will be held following 10:30 Mass.

NICHIREN BUDDHIST CHURCH
10 a.m.—Kindergarten children and juniors service.
11 a.m.—Young people's service in English.
2 p.m.—Japanese Service.

PRESBYTERIAN
9:30 a.m.—Church school for all ages.
10 a.m.—Issei worship service.
10 a.m.—Young people's Bible discussion.
11:10 a.m.—Nisei worship service. Sei Adachi to speak on "What's Wrong with the World".
8:30 p.m.—Junior Westminster Fellowship.
7 p.m.—Senior Westminster Fellowship.

ST. PETER'S MISSION
9 a.m.—Issei Holy Communion. Rev. G. Shoji.
9:45 a.m.—Sunday School. Miss Gladys Gray.
11 a.m.—Nisei Worship Service.
7:30 p.m.—Fri.-night YPF meetings.

1ST CHRISTIAN INTERRACIAL
8 p.m.—Services by the Rev. J. J. Pruitt in YMCA chapel, Fourth and Madison.

We sometimes meet an original gentleman, who, if manners had not existed, would have invented them.—Emerson

Patronize Your Advertisers

WHEN YOU WANT
●Diamonds
●Watches
●Silverware
Call SAIBO FUJII
Bus. MA. 7670 Res. CA. 2517
Personal Representative

Friedlander & Sons.
5th at Pike
CONVENIENT CREDIT—NO INTEREST—A YEAR TO PAY

Patronize Your Advertisers

STANLEY Y. KARIKOMI
District Representative
The
MANUFACTURERS Insurance LIFE Company
Branch Office
Seattle 1
531-4 Skinner Bldg.
Washington
Telephone: ELiot 2993
Residence: CApitol 9692