

The Northwest Times

THE ONLY ALL-ENGLISH NISEI NEWSPAPER
IN THE PACIFIC NORTHWEST

Established January 1, 1947

Published every Wednesday and Saturday of each week.
Editorial offices at 304 Main St., Seattle 4, Wash. Phone
SEnece 5594. Office hours: 9 a.m. to 6 p.m. daily except
Sundays and holidays.

Editor & Publisher Budd Fukui
Associate Editor Hideo Hoshide
Art Editor Tom Tsutakawa

SPECIAL REPRESENTATIVES

TACOMA—Kimi Fujimoto
1710 Fawcett Ave., Tacoma, Wash.
PORTLAND—Tom Okasaki
7404 N. Denver, Portland, Ore.
SPOKANE—Norio Wakamatsu
W. 325 Trent Ave., Spokane, Wash.
Bus. MAin 6712

Subscription Rates
One month \$.75
Six months 4.25
One Year 8.00

Classified Ads
Minimum charge 60 cents
Per word insertion 5 cents

MAIN STREET

by bf

CURRENTLY
A great push is on in Seattle to reactivate the local chapter of the Japanese American Citizens League.

The membership drive is in full blast, and the Nisei are reluctantly coming into the JAACL fold.

Just as in pre-war days, the local JAACL unit to date has been the untiring efforts of the select few, the stronghold of the select few, and the cry and hue of the select few.

The chapter here could absorb a lot of new talent, and the powerful Nisei Veterans Committee with its several hundred members could provide that in abundance.

If the JAACL unit is headed by such understanding and capable veterans as Lefty Ichihara, Dick Setsuda and Harry Takagi, this column is all for it. We just cannot visualize a JAACL group without the logical leadership of the matured Nisei veterans.

PURELY

personal piffles: Sono Osato, who appears briefly as a seductive dancer in the current film, "The Kissing Bandit", is of Japanese and French-Irish parents, and is a beauty, but her younger sister—our memory fails us in recalling her name—is prettier still and she lives in Chicago. . . . groundhog Pete didn't see his shadow last Wednesday but one can be positive he saw his tracks. . . . something we didn't know: Eleanor King, the dance teacher from New York, tells us that Pacific Northwesters, like the Midwesters, appreciate good music, concerts and dance. . . . the slush and the snow in our town today sloppily remind us of our winter stands on Seventh St. in St. Paul, Minn., and Hennepin Ave. in Minneapolis, Minn. . . . a disturbing item for the Nisei coeds in colleges and universities, was the one by Lawrence Gould, consulting psychologist, in the local morning metropolitan rag; Gould states that college does not improve a girl's marriage chances. . . . free-lance photog Elmer Ogawa is the brother of Herb Ogawa who ran the English section of the N. A. Times before the war and who is now a salesman deep in the heart of Texas. . . . Dr. Robert O'Brien of U. W. sociology department dropped in to say "hello" and then took



IT PAYS TO FIGHT
By GEORGE S. BENSON
President of Harding College
Searcy, Arkansas



EVERYBODY LOVES a fighter. For that reason, the popularity of Harry S. Truman is running pretty high at this time. All the pollsters, all the misled, have had their say: President Truman was the man who wouldn't be licked! Mr. Truman was apparently the only candidate who really took the opinion polls to heart. While the general public was being lulled to sleep by everybody's opinion as to the outcome of the election, Candidate Truman got in there and fought.

Preferences for candidates in the voting on November 2 were not the same as reported by the poll takers before election. What happened? My guess is this: a larger percentage of those who favored a fighting man went out to vote than was the case with those favoring the non-fighter, who thought he would be elected anyhow. In other words, the opinion polls were interpreted by each candidate—by Mr. Truman in a way that helped elect Mr. Truman and by Mr. Dewey in a way that defeated Mr. Dewey.

Fight or Die

THE IMPORTANT thing is that the fighting man won. This is an old American principle. The man who works the hardest, who never-says-die, is favored in the struggle for success. Our nation has been built by heroes, sung and unsung, who lived by that rule. May I submit that in these critical times, it will not be possible for America to keep her traditional place as the most favored of lands, unless Americans are willing to take up the fight.

Why has America more national

income than any other six nations you can name? Why do more American youth have a chance to go to high school and college than go in all the rest of the world put together? Why do American workers have the highest wages in all the world? Here are some of the reasons: we have the right to own property, to operate our own businesses and compete with each other, to invest capital in industrial tools.

Stakes Are High

MOREOVER, we Americans can work at the job we like, wherever we like, with equal justice for all. If we keep these liberties, preserve constitutional government, and maintain freedom of individual opportunity, it will be possible for us to double our wages and standards of living, as we did during the last generation. If we turn to government management, we can expect wages and living standards to go down 50 per cent below the present level.

Step by step America is being pushed in that direction. A few more steps, and we may find ourselves under such pressure that we cannot avoid socialism, and the communism that follows it. Our people must understand these facts. More important, we must be active in preserving the fundamentals of our American way of life. The price of freedom is still "eternal vigilance."

Are we willing to fight valiantly by every means: platform, radio, press, screen, and conversation—to preserve America's freedoms? If so, we can keep our freedoms. Otherwise, they will pass away, as from Greece and Rome. It takes a valiant heart. Those who win are those who fight.

Plans to Obtain Feet for Actress

TOKYO, Japan, Feb. 5—Susumu Jinka (Kamihana), a former Seattle, Wash., resident who is now a civilian worker with the American occupation force, is trying to arrange a trip to the United States to obtain artificial feet for a 20-year-old Shochiku actress who lost her feet last Oct. 2. The victim, pretty Kiku Yoshikawa, was accidentally pushed from a platform of the Hodogaya station in Yokohama during the rush hour and fell in front of an oncoming electric train. The film star lost both feet at the ankles as the result of her injuries. Jinka is expected to be accompanied by a U. S. major if permission for the trip is granted.

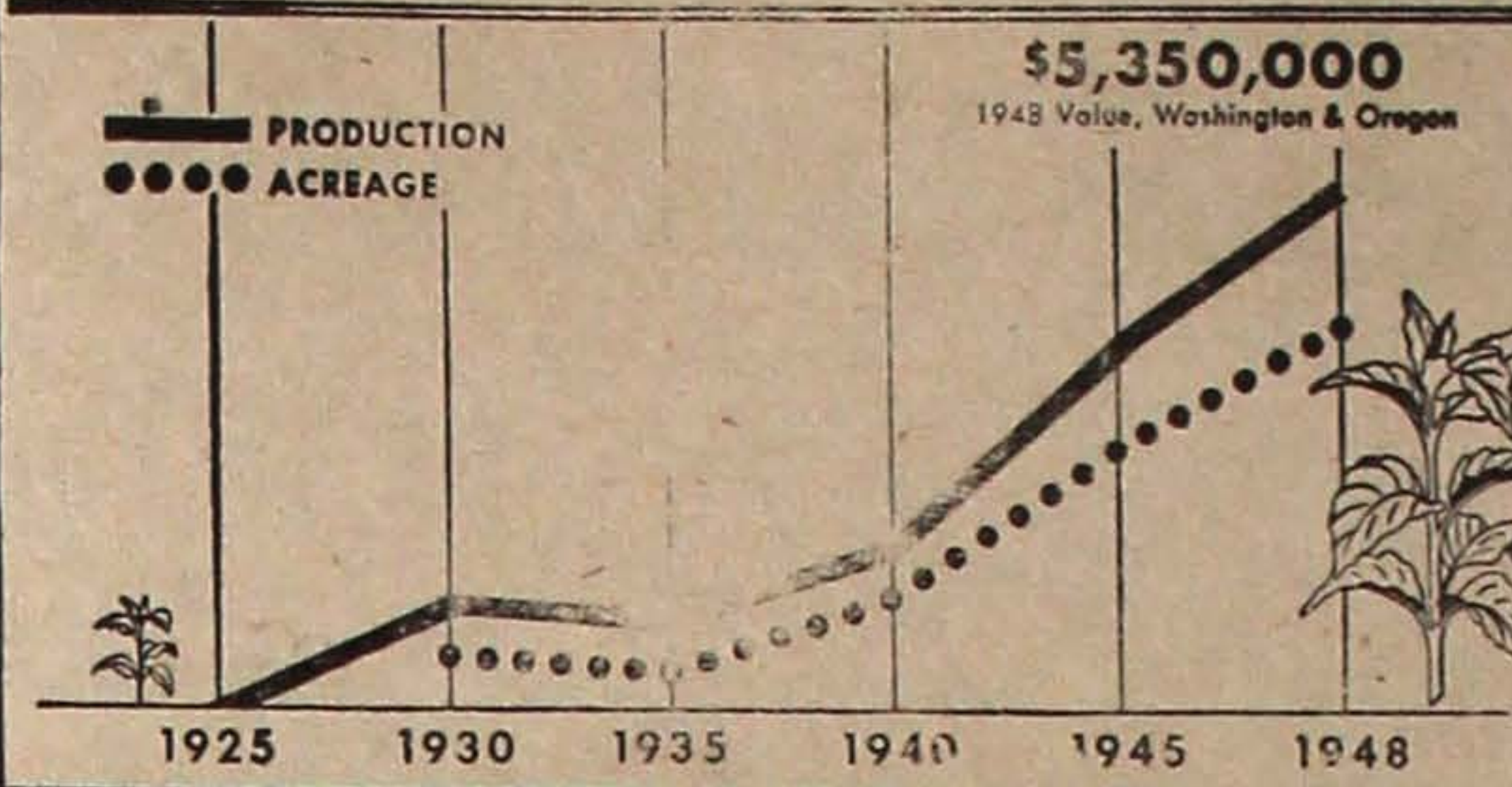
How weak a thing is gentility, if it wants virtue!—Fuller.

Nisei Youths Active In Oregon Colleges

PORTLAND, Ore., Feb. 5—That the Nisei are participating in college activities in this area, is noted in the following items:

Ned Minamoto of Multnomah college is secretary for Zeta Chi fraternity and member of the Warriors (an honor society). He also was captain of the '48 tennis team. Miki Tamayama, of Multnomah college, is a member of the Zeta Chi. At Lewis and Clark college, Selji Nishio of Hood River is secretary of MacAfee hall (a dormitory). Satayoshi "Pete" Morita from Kaul, Hawaii, is a member of the Mustangs (a service club), and Tsugue Ikeda of Portland is a member of the Alpha Rho Omega. William Naito is a member of AVC at Reed college.

Mint Becoming Major Washington Crop



MORE THAN HALF the national total of peppermint oil is now produced in the Pacific Northwest, where peppermint has become a more valuable crop than any other fresh vegetable. Starting from nothing in 1925, peppermint plantings in Washington and Oregon reached 16,400 acres and production reached

more than 800,000 pounds, worth \$5,350,000, in 1948. A new \$100,000 rectifying plant is now being operated by I. P. Callison & Sons at Chehalis, Wash., and produces scientifically rectified types and blends of peppermint flavor used in leading brands of chewing gum, dentifrices and candies.

Just among People

by gordon hirabayashi

Gordon Hirabayashi, an associate in the department of sociology at the University of Washington, today starts his column, "Just among People," in which he discusses the strange practice of "group marriage" or "sexual hospitality."

Hirabayashi's writings will appear weekly in the Saturday editions of THE NORTHWEST TIMES.

such a custom is practiced. Siberian communities are many miles apart; travelling facilities are extremely slow compared to our modes. Trips take weeks before a man is home again, and thus it is assumed as a mutually beneficial arrangement for close friends or cousins of different villages to engage in such pacts. These privileges are exchanged only among the pact members. "Sexual hospitality" is practiced openly in the Chukchee culture. The sexual addition to the hospitality is regarded about as casually as we in our culture may consider dancing with another person's spouse. Therefore, when considered in the light of the total situation where it exists (and not from our foreign standards), it is not necessary to get into moral arguments.

It is interesting to note that not only among the Chukchee, but in every group known to man, we find specific regulations regarding sex behavior. These regulations may vary among different groups, as in fact they do to a great extent, but the point to remember is that promiscuity as such has never been found in any of the groups known to man.

TWO JAACLERS WILL ATTEND D. C. MEETING

WASHINGTON, D. C., Feb. 5—Mrs. Etsu Masaoka and Lily Yasuda will represent the JAACL Anti-Discrimination Committee at a two-day conference on Unfinished Business in Social Legislation Feb. 7-8 in Washington, D. C.

The conference will discuss legislation dealing with: Housing and rent control, social security, fair labor standards, general civil rights, health, and inflation and price control.

Sponsoring organizations include the YWCA, National Federation of Settlements, American Association of Social Workers, National Council of Jewish Women, Department of Christian Social Relations, National Council of Negro Women, Christian Service of the Methodist Church, NAACP, Consumers' Union, National Consumers League, National Association of Consumers, Women's Trade Union League of America, and the Presbyterian Church Division of Social Education and Action.

Main Street Service
GAS - OIL - AUTO REPAIR
12th & Main St
EAst 9614

Golden Pheasant Cafe
Best Chinese Food
in Town
SEnece 9145 307 Sixth Ave. S.

Gyokko-Ken Cafe
508-510 Main St
MA. 3662
Seattle 4, Wash.

WHEN YOU WANT . . .

- *Diamonds
- *Watches
- *Silverware

Call SAIBO FUJII

Bus. MA. 3676 Res. CA. 2517

Personal Representative

Friedlander & Sons

5th at Pike

CONVENIENT CREDIT—NO INTEREST—A YEAR TO PAY



Powder Box Beauty Salon

KIKUE HAGIMORI

MARY TSUCHIKAWA

526 King St. MAIn 2973
Seattle, Wash.

Frank's Jewelry

617 Jackson St.
Seattle, Wash. EL. 8377
FRANK Y. KILIAMCTO

TERRY'S AUTO SERVICE

1202 Rainier Ave. EA. 9459
Gas-Oil-Auto Repair
MORIO TERAYAMA

TAKANO STUDIO

HENRY Y. MIYAKE
Photographer
668 Jackson St.
Seattle 4, Wash.
Phone MA. 8186
CA. 8952

International Realty

Real Estate and Insurance
Business Opportunities
Notary Public

James M. Matsuoka
659 Jackson St. MA. 1522
Seattle 4, Wash.

N. P. Hotel

306 6th Ave. S.
Y. FUJII



Phone
MAIn 3952

Member of
Certified Independent
Grocers

DEARBORN

Cash Grocery

Mits Abe
Yoshiko "Salty" Mizuta
We Deliver
725 Dearborn St. ELot 9169

North Coast Importing Co.

515 Maynard Ave., Seattle 4, Wash.
Tel. EL. 4833 P.O. Box 3006, Seattle 14.

Just Arrived!

1948 New Crop Smith 500 (Blue Rose) Rice now available at your favorite grocery stores.

Also

1948 New Crop "Daikoku" Brand California Extra Fancy Rice.

The Quality of both brands are always guaranteed.



- Corsages
- Plants
- Wedding Decorations
- Funeral Designs
- Cut Flowers



HEIDI'S FLOWER SHOP

"ARTISTRY IN FLOWERS"

708 1/2 Madison MAIN 3547

Westinghouse Laundromat saves up to 10 gallons of water a load



BUY ON PROOF!

INSTALLS ANYWHERE!
NO BOLTING!
NO VIBRATION!

PROOF 1. Saves Water. Exclusive Water Saver measures water to size of the load. All you do is set the dial.

PROOF 2. Washes Cleaner. Exclusive, gentle but thorough action washes cleaner. Soiled water drains away from clothes, not through them.

PROOF 3. Ends Washday Work. Automatically washes, triple rinses, damp-dries, cleans itself, shuts off.



Here's How You Get Proof: Phone us and make arrangements to have a load of your clothes washed in the Laundromat free!

The Laundromat costs \$299.95

CHIHARA APPLIANCE CO.
CHIHARA JEWELRY CO.

612-614 Jackson St.

MAIn 2275

THE Sporting Thing by bf

"Matt" Was a Typical American Boy

The fact that the body of Pfc. Matsusaburo Tanaka will be returned to Seattle soon may not interest you at all—not unless you had known "Matchan" or "Matt" as he was later called.

Pfc. Tanaka—it was just like him—was one of the mainland Nisei who volunteered to serve as replacement in the famed 100th battalion which was comprised of Nisei from the Hawaiian islands and which was engaged in many fierce battles during the early stages of the European campaign.

The Seattle GI was killed on the first day of action by the 42nd combat team in Italy. That was on June 26, 1944.

But the story of Pfc. Tanaka should not end had died a hero's death in line of duty.

But the story of Pfc. Tanaka should not end abruptly with the plain, cold statement that he Rather, the story of Pfc. Tanaka should begin by our recalling his days before he took off to the wars with other Americans in defense of our way of life.

"Matt" was a typical American boy who loved his sports.

He formed a ragged group of amateur gridsters who proudly called themselves the "Beavers", he started out as an infielder and then wound up as a pitcher for a Taiyo nine, he fought his way into the regular lineup of the crack r-jack Lotus Troy basketball team, and, of course, he joined the gang and occasionally walked home from Mount Baker after a long day of swimming, thereby saving a nickel to purchase a large candy bar or a healthy ice cream cone.

But all was not play for "Matt". "Matt" also found time to help his parents in their meat and poultry business.

However, we should like to remember "Matt", most of all, as the wholesome fellow who believed in a clean livelihood, rejecting flatly the various vices which are tempting to a youngster growing into manhood.

The life that "Matt" led up to his death on the battlefield of Italy, is one which our present teenagers may well follow as a good example.

Takes Honors at Ski Meet



FOX RIVER GROVE, ILL.—Imported snow didn't stop Petter Husted, 1948 Olympic Ski Jumping Champion, made place in the Norge International

MARYKNOLL PARISH
16th and E. Jefferson St.

Carnival-Bazaar

1st Prize

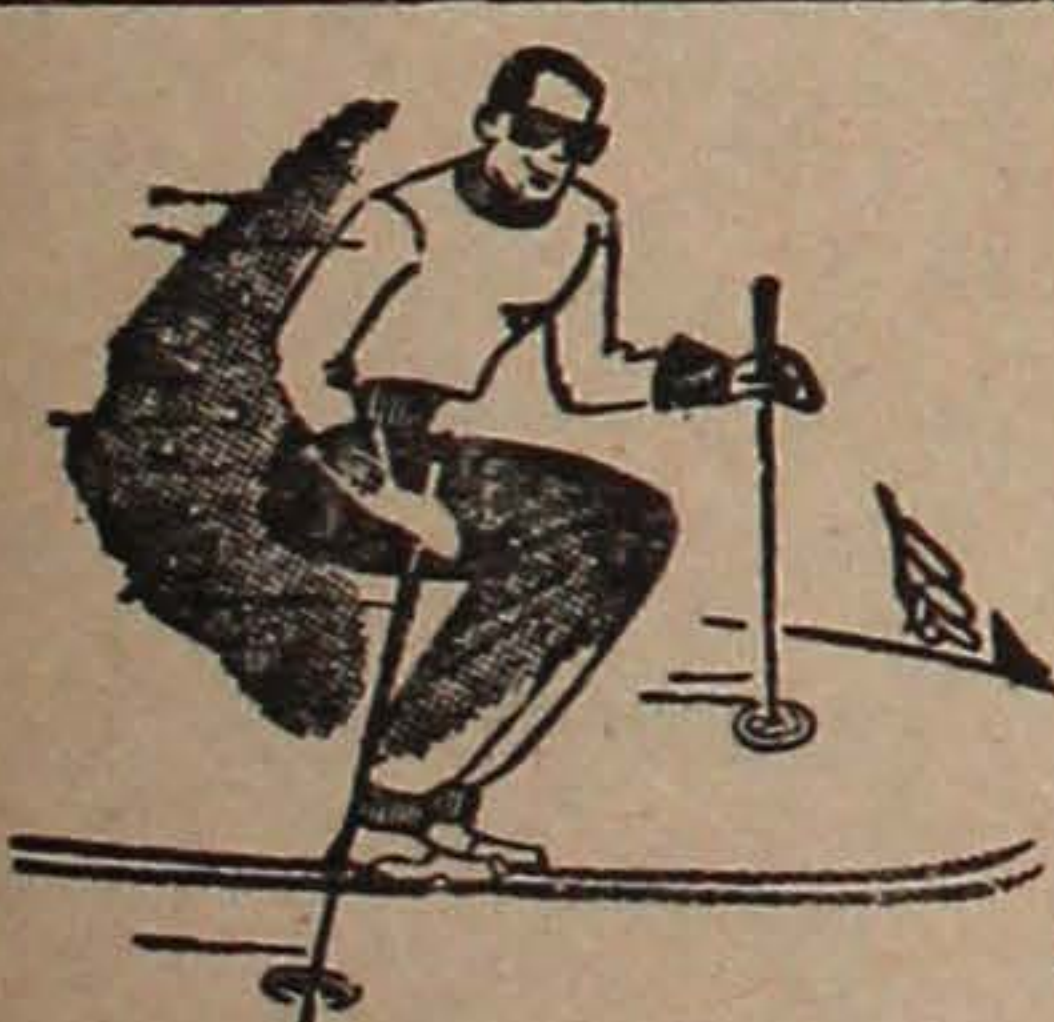
WESTINGHOUSE Laundromat

Friday, February 18—5 to 11 P. M.

Saturday, February 19—1 to 11 P. M.

GAMES • REFRESHMENTS • FOODS

Everyone is invited.



SKIS
SKI RENTALS
SKI EQUIPMENT

Friendly HAB's

Complete Sportings Goods
EL. 7038 815 Jackson St.

O'ER THE TOP REMAINS ATOP IN LOCAL NCL

NISEI COMMERCIAL LEAGUE STANDINGS (As of Feb. 2)

Team	W	L
Over the Top Beverage	42	24
Northwest Times	41	25
Sakahara's	41	25
Main Drug	40	26
P.S.V.G.A. (Summer)	36	30
Shanty Inn	36	30
International Realty	34	32
P. S. Laundry (Tacoma)	33	33
Higashi's	29	37
Cathay Post 186	27	39
12th Ave. Service	21	45
City Produce	16	50

NIGHT'S HIGH

Singles—Roy Tanagi, Sakahara's, 225.
Series—Ossie Tsuchikawa, International Realty, 593.

Over the Top Beverage held its leadership in the Nisei Commercial League Tuesday night by decision-making International Realty, 2-1, in Main Bowl.

Sakahara's moved into a second-place tie with Northwest Times by trimming City Produce, 2-1. The Timesmen dropped a 2-1 call to Puget Sound Vegetable Growers Association.

The results follow:

OVER THE TOP (2)—Tanaka 555, Nitta 514, Inashi 552, Fujino 547, T. Shibuya 509; INTERNATIONAL REALTY (1)—Segimoto 528, O. Tsuchikawa 593, Yamamoto 520, Mihara 418, Nomura 486.

SHANTY INN (3)—Kuranishi 508, Asaba 589, Arita 526, Urakawa 471, Tsuji 542; 12TH AVE. SERVICE (0)—Shiota 441, Nagasawa 438, J. Koga 502, Takayoshi 533, Mizuki 468.

HIGASHI'S (2)—Hamasaki 507, Nishimura 424, Shimizu 504, Minato 463, Tsuboi 441; PUGET SOUND LAUNDRY (1)—Joe Asahara 485, John Asahara 479, Tanabe 501, F. Hidaka 462, Yamane 482.

PSVGA (2)—Iwasaki 530, R. Kiyohara 496, Ota 493, Yamaguchi 569, Maebori 541; NORTHWEST TIMES (1)—G. Tanagi 496, Nishimoto 513, Hirai 528, Yamasaki 530, Kuniyuki 486.

SAKAHARA'S (2)—Roy Tanagi 574, Oyama 556, Rick Tanagi 508, S. Suyama 503, Fujiwara 524; CITY PRODUCE (1)—I. Nakashima 411, Sasaki 434, Obata 491, N. Suyama 454, Horitchi 479.

MAIN DRUG (2)—Furuta 550, T. Hidaka 544, Tada 479, Kimura 528, Takahashi 527; CATHAY POST (1)—Eng 388, Goon 452, Yapple 508, Toy 483, Chin 528.

Hardware & Plumbing Supplies

Kiyoshi Yasui
Bob Hikida
1713-15 Yesler EA. 5660
Seattle 22, Wash

CALL

Over the Top Beverage

Three Stores to Serve You.

NOBI TAKAHASHI
414 Main SE. 5878

PANCHO CAPPELETTI
107 Washington SE. 9125

TEIKO HAMAOKA
607 Yesler SE. 9233

Frank Russo, Prop.

Cage Standings

CLASS AA		W	L
Tokuda Drug		7	0
Polka Dots		6	1
Mercury		4	3
White River		3	4
Nuggets		3	4
Wah Mee		3	4
Fife		2	5
Natco		0	7

CLASS A		W	L
Filipino Catholic Youth		7	1
Main Bowl		5	3
Tokuda Drug Savoy's		4	4
Main Drug Crows		4	5
Comets		3	5
Lotus Lancers		3	4
Greenhouse		2	6

CLASS B		W	L
Rissho		5	2
Monarchs		4	2
Troop 53 Midgets		3	2
Fife Jrs.		2	3
Cathay Post 186		1	6

GIRLS		W	L
WWG's		7	0
Lotus		5	1
Chicks		4	2
Anna Kay's		3	3
U. W. Coeds		2	4
Tacoma YBA (Fife)		1	6
Starlettes		0	6

Trio Pace Nuggets In Playoff Tilt

Pat Hagiwara, Johnny Kusakabe and Tak Yagi found the range consistently to enable the Nuggets to beat Wah Mee, 44 to 30, Wednesday night in the Buddhist gym. The victory put the Nuggets into the Class AA basketball league playoff series.

The scoring follows:
NUGGETS (44)—E. Sasaki 5, S. Kaseguma 2, T. Yagi 8, Hagiwara 10, H. Nishimura, Kusakabe 9, R. Sasaki 2, S. Sakai, Ikeda 6; WAH MEE (30)—Yapple 8, J. Wong, W. Chinn 1, Edwin Mar 1, R. Wong 3, Ernie Mar, R. Ko 2, D. Wong 6, J. Ko, B. Wong, C. Chinn, G. Yee 9.

The flowering of civilization is the finished man—the man of sense, of grace, of accomplishment, of social power—the gentleman.

NCL Bowling Schedule

THIRD ROUND
Tuesday, Feb. 8

Alleys 1 and 2—Shanty Inn vs. International Realty.
Alleys 3 and 4—City Produce vs. Over the Top Beverage.
Alleys 5 and 6—N. W. Times vs. Cathay Post.
Alleys 7 and 8—Main Drug vs. Sakahara's.
Alleys 9 and 10—P. S. Laundry vs. 12th Ave. Service.
Alleys 11 and 12—Higashi's vs. PSVGA.

TUESDAY, Feb. 15
Alleys 1 and 2—P. S. Laundry vs. Sakahara's.

JACKSON GROCERY
1803 Jackson St. EA. 0603
Prop. Mrs. Hannah Maekawa

Shanty Inn Cafe
"WHERE FRIENDS MEET"
110 12th Ave. CA. 9677

AL MAR'S
12th Ave. Food Market
CA. 0700 Free Delivery
118 12th Ave. Seattle

Bus. MAin 6513
FRANK HATTORI REALTY
Res. MInor 0934
304-6th Ave So. Seattle 4, Wash.

G. FUJIMOTO SPILLS PINS, FIRES A 550

NIGHT'S HIGH
Singles—Suds Nakagawa, West Coast Printing, 220.
Series—George Fujimoto, Jackson Grocery, 550.

George Fujimoto fired a 550 series, the night's high, but his Jackson Grocery squad was taken 4 to 0 by Kashiwagi's in a City Merchants league match Thursday night in Main Bowl.

In other tilts, Tad's Gardening whitewashed O.K. Cafe, 4-0; Hattori Realty trounced Richard's Jewelry, 4 to 0; and Seventh Ave. Service downed West Coast Printing 3-1.

Suds Nakagawa of West Coast hit the night's high singles game of 220.

SNGBO Results

NIGHT'S HIGH
Singles—Tosh Kanzaki, New Chinatown, 191.
Series—Jean Numoto, China Import & Export, 501.

Using its handicap to advantage, Stop 'n Shop put the 4-0 stopper on league-leading China Import & Export in a SNGBO (Seattle Nisei Girls' Bowling Organization) match Thursday in Main Bowl. Fudge Sakanashi of the grocery outfit rolled a 480 series.

Tokuda Drug pushed down Gyokko Ken, 3-1; Yamano Studio dunked New Chinatown, 3-1; and Martha's Beauty Shop topped Over the Top Beverage, 3-1, in the remaining contests.

'AA' Cage Sked

SUNDAY, Feb. 6
3:30 p.m.—Polka Dots vs. Mercury.
4:30 p.m.—Tokuda's vs. Fourth Team.

WEDNESDAY, Feb. 9
9 p.m.—Mercury vs. Fourth Team.

FRIDAY, Feb. 11
9 p.m.—Tokuda's vs. Polka Dots. All games will be played in the Buddhist gym.

Kanda, Tanabe Lead Coeds

Betty Kanda and Dorothy Tanabe with 23 and 17 points respectively led the U.W. Coeds to a sparkling 49-23 victory over the Starlettes in a girls' basketball league game Tuesday night in St. Peter's gym. The Coeds were out in front, 18-11, at the half.

The Monarchs repelled Cathay Juniors, 21-11, in a Class B contest, and the Chicks downed Anna Kay's in the other girls' tilt.

The scorings follow:

U.W. COEDS (49)—Kanda 23, D. Tanabe 17, Nakamura 5, Y. Kodama 2, Inaba 2, Sakanashi, E. Hirabayashi, M. Tamura, Ondo, Shimozaka; **STARLETTES (23)**—Aoyama 5, Jean Fujii 2, Namba 4, A. Hirabayashi 12, I. Fujii, Nakashima, Okamoto, T. Tanaka, Kobata, Takeda, Shimbo.

TODAY'S MONARCHS (21)—Inouye 3, Furumoto, Kitan 15, Yutan 1, Sasaki, Nagai, Kono, Matsuoka 2; **CATHAY JRS. (11)**—A. Wong 2, C. Wong 1, T. Chin 2, E. Wong 2, A. King 4, P. Yee, T. Mar, J. Wong, D. Eng.

CHICKS (27)—Tomo Iwasaki 10, Kitayama 10, Kanda 2, D. Iwasaki 5, S. Tanaka, Yoshioka, Fujino, J. Watanabe, Umino; **ANNA KAY'S**

WWG'S TRIM ANNA KAY'S FOR SEVENTH

WWG's of the local Baptist church earned their seventh straight victory in the girls' basketball league Wednesday in the Seattle Buddhist gym. They smothered Anna Kay's, 22 to 10. The "Dubs" led, 11-2, at the half way mark.

The Starlettes were snowed under by the Chicks, 40-10, in the opener.

The scorings follow:

WWG'S (22)—K. Kitayama 13, B. Yoshino 5, R. Tanaka 4, N. Hasegawa, A. Chikamura, A. Takizaki; **ANNA KAY'S (11)**—Nagai 4, K. Nakanishi, Koz Nakanishi 4, Iwasaki 2, Tanabe, Kinoshita, Morooka, Fujii.

CHICKS (40)—Tomo Iwasaki 10, T. Kitayama 6, Y. Kanda 3, D. Iwasaki 17, S. Tanaka 4, Yoshioka, Fujino, Watanabe, Umino; **STARLETTES (10)**—Aoyama 2, A. Hirabayashi 2, Namba, I. Fujii 2, J. Fujii 3, Kobata, Shimbo, Fukeda, T. Tanaka, S. Nakashima 1.

(15) Kato 6, Koz Nakanishi 3, Kim Nakanishi 6, Nagai, T. Tanabe, Toshi Iwasaki, Kinoshita, K. Fujii.

Local Basketball Schedule



FRIDAY, Feb. 11
In Buddhist Gym
7 p.m.—Greenhouse vs. Savoy's (A)
8 p.m.—B league playoff game.
9 p.m.—Tokuda Drug vs. Polka Dots (AA playoff).

SUNDAY, Feb. 13
In Buddhist Gym
1 p.m.—Greenhouse vs. Savoy's (A)
2 p.m.—Class B championship game between first and second-round winners.
3 p.m.—Class AA championship game.

MONDAY, Feb. 14
In Buddhist Gym
7 p.m.—Crows vs. Main Bowl (A)
8 p.m.—Starlettes vs. Anna Kay's (G)

TUESDAY, Feb. 15
In Buddhist Gym
7 p.m.—Chicks vs. Lotus (G)
8 p.m.—Greenhouse vs. Comets (A)

WEDNESDAY, Feb. 16
In Buddhist Gym
7 p.m.—WWG's vs. U. W. Coeds (G)
8 p.m.—Anna Kay's vs. Lotus (G)
9 p.m.—Fife vs. Starlettes (G)

THURSDAY, Feb. 17
In Buddhist Gym
7 p.m.—WWG's vs. Chicks (G)
8 p.m.—Anna Kay's vs. U. W. Coeds (G)
9 p.m.—Starlettes vs. Lotus (G)

FRIDAY, Feb. 18
In Buddhist Gym
8 p.m.—Class A championship game.
9 p.m.—Girls' championship game.

Motorola Car Radio

Complete Automotive Repairing

Lubrication

Gas—Oil—Accessories

New Tires — New Batteries

7TH AVENUE SERVICE

701 Jackson St. EL. 9833 Seattle 4, Wash.
Charles C. Toehi — Ted K. Imanaka — George Koyama



THE NEW 1949 REMINGTON

Portable Typewriter

94.50 with case

BUDGET TERMS 10.00 down

Plus Tax

- Distinctive new finger-fit keys.
- Exclusive self-starter paragraph key.
- Exclusive geared typebar action.
- Levelly non-glare two-tone finish.

Eminent educators and psychologists proved, by nationwide tests, that students using a typewriter get better grades in all their subjects. Start your boy or girl to a brighter tomorrow. Buy the new 1949 Remington Portable today!

W. NAKAMURA CO.

Phone SE. 4716 664 Jackson St.
Seattle, Wash.

NATCO WAR SURPLUS STORE

New Suntan Pants specially priced at \$2.95
B-15 Type Jackets special now at \$9.50 & \$14.50

Also
BIG SAVINGS ON

Work Sox Work & Dress Shoes Sweaters

NORTH AMERICAN TRADING CO.

519 Jackson St.

Seneca 6976

Rain Jackets & Pants at bargain price
Rain Gear for the Golfer

The Social Whirl

BRIDAL SHOWER . . . Mrs. Paul S. Shigaya was hostess at a surprise miscellaneous bridal shower honoring Miss Teru Nakata on Sunday, Jan. 30, in Mrs. Shigaya's home. Miss Nakata will become the bride of Mr. Ed Kiyohara on Saturday, Feb. 12.

Among those present besides the honored guest and the hostess were the Mesdames Shiro Kashino, Mike Nakata, Mas Watansbe, Tom Yano, Joe Nakatsu, Ray Kiyohara, Henry Miyoshi, George Ota, James Matsuoka and Miss Doris Miyoshi.

Unable to attend were Miss Amy Taniguchi and Mrs. Ed Natori.

Many beautiful gifts were received by the bride-to-be.

FIRST CHILD . . . KANSAS CITY, Mo., Feb. 5—Dr. and Mrs. Hiroshi Robert Akaye of Kansas City became parents of a baby boy

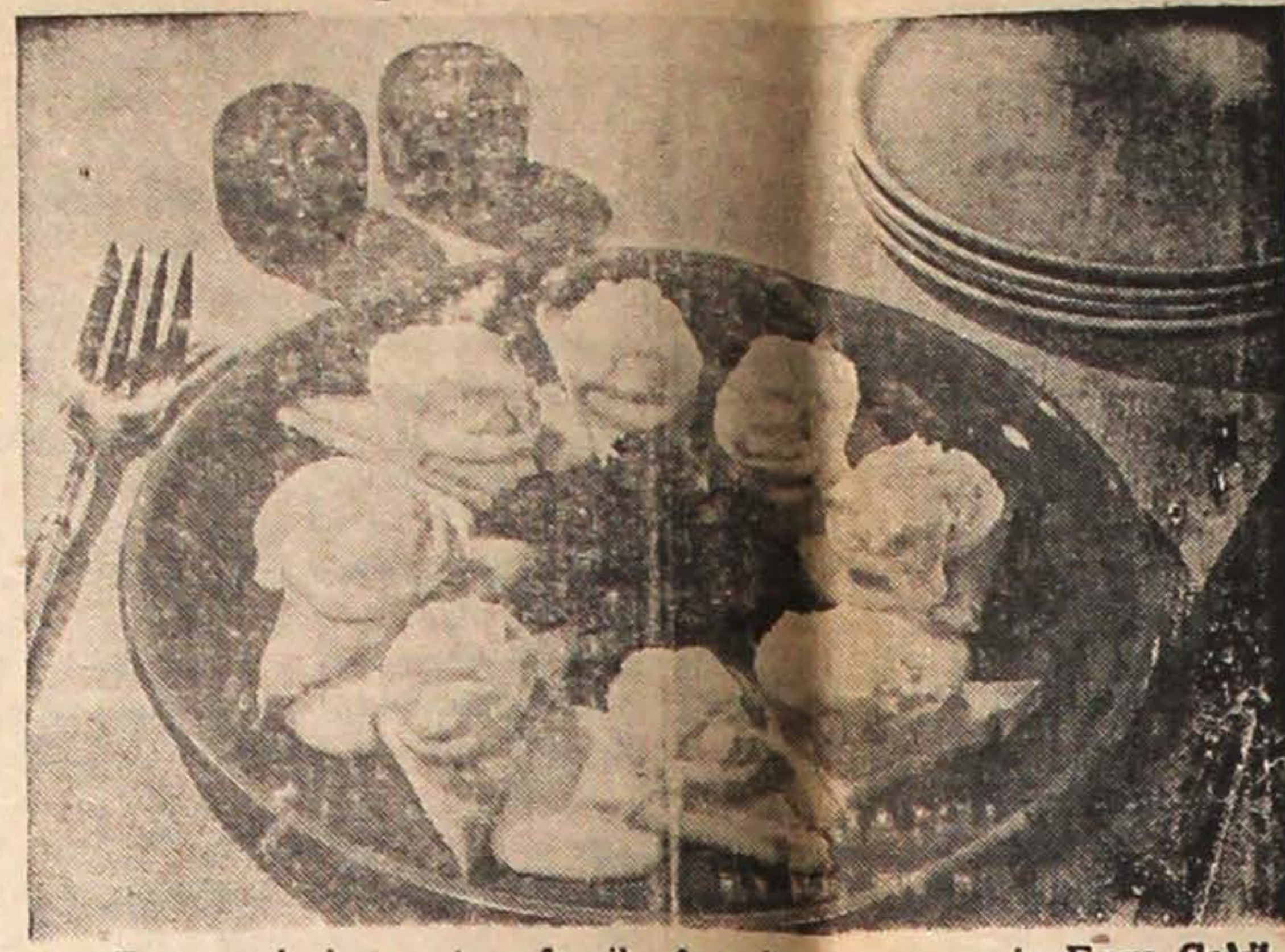
last Jan. 19. The newcomer, the Akaye's first child, has been named Robert Eugene.

Dr. Akaye is an instructor in Oral Surgery and Crown and Bridge Department at the University of Kansas City School of Dentistry. Recipient of a D.D.S. degree last May, 1948, he has been voted into the Omicron Kappa Upsilon, a national dental honorary society.

Mrs. Akaye, the former Ayako Yamanaka of Seattle, was an active member of the Lotus Bukkyo Senjikai and the Northwest Young Buddhists league.

The summary of good-breeding may be reduced to this rule: "Behave to all others as you would they should behave to you."—Fielding.

Quick Dinner Dish



Eggs and cheese, two family favorites, team up in Eggs Geldilocks to make a good tasting, easy-to-prepare dinner dish. Attractive, too, with the yellow gold of the cheese sauce over stuffed eggs and toast.

Cheese is a "best buy". It is plentiful and in the class of foods which offer more for your dollar. It's a bargain in nutrition, too, supplying energy, phosphorus, calcium, vitamins A and G, and excellent protein (a half-pound of cheddar cheese furnishes as much protein as a whole pound of average beef).

Serve Eggs Geldilocks today and use cheese often in other dishes.

Eggs Geldilocks

- 4 hard-cooked eggs
- 4 tablespoons mayonnaise
- Salt and pepper
- 1/2 pound pasteurized process cheese
- 1/2 cup milk
- Parsley

Cut eggs in half lengthwise. Remove the yolks, mash and combine with mayonnaise. Season to taste with the salt and pepper. Put the whites. Cut squares of toast cornerwise and arrange on a chop plate. Place a stuffed egg half on each toast point. Melt the cheese in the top of a double boiler. Gradually add the milk, stirring until the sauce is smooth. Pour the sauce over the eggs. Garnish with parsley.

Nisei Calendar

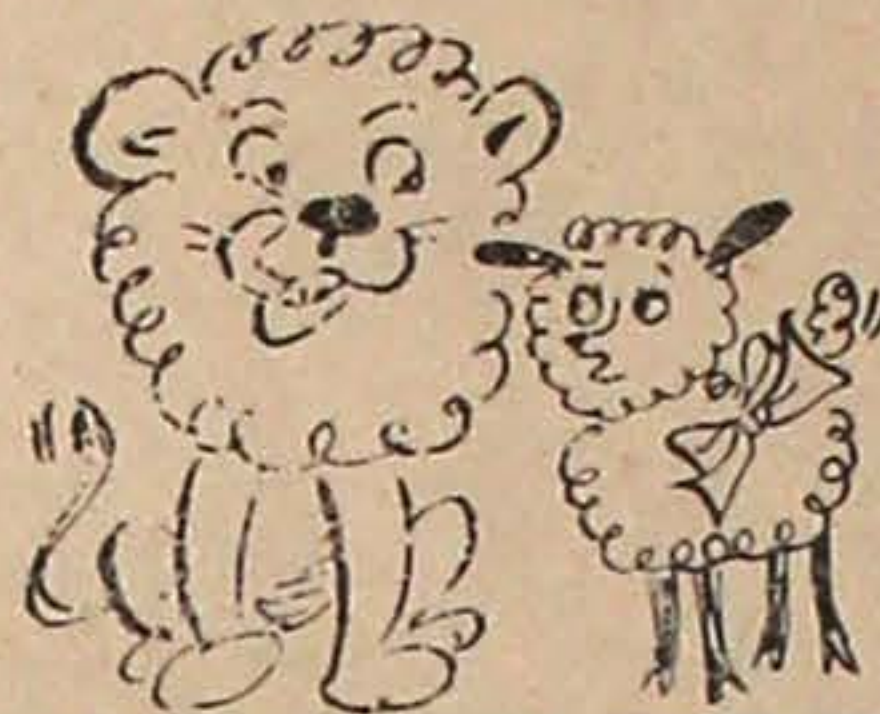
FEBRUARY						
SUN	MON	TUE	WED	THU	FRI	SAT
	1	2	3	4	5	
6	7	8	9	10	11	12
13	14	15	16	17	18	19
20	21	22	23	24	25	26
27	28					

12—Annual Sweetheart Tea to be sponsored by Cathay Post 186 and its auxiliary in the Knights of Columbus hall, 722 E. Union.

18, 19 and 20—Tentative dates for Northwest Invitational Basketball Tournament

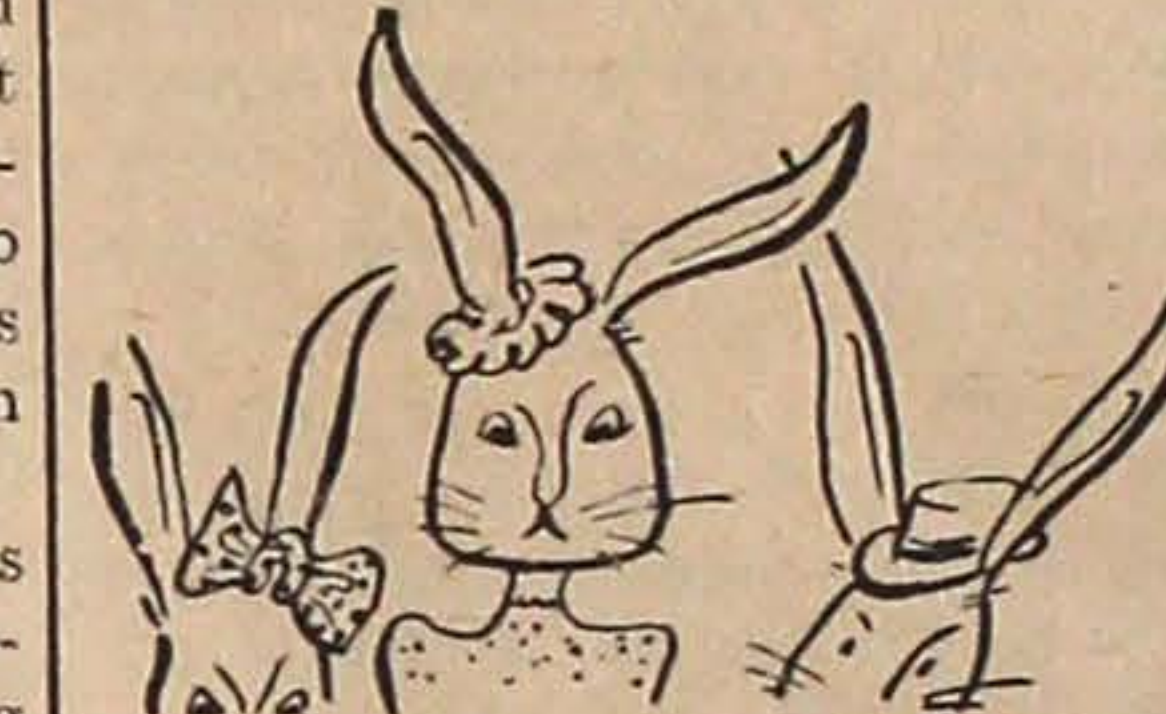
18-19—Maryknoll church benefit bazaar.

21—Maryknoll Adrians will have their roller-skating party at Roller and Rink.



MARCH						
SUN	MON	TUE	WED	THU	FRI	SAT
	1	2	3	4	5	
6	7	8	9	10	11	12
13	14	15	16	17	18	19
20	21	22	23	24	25	26
27	28	29	30	31		

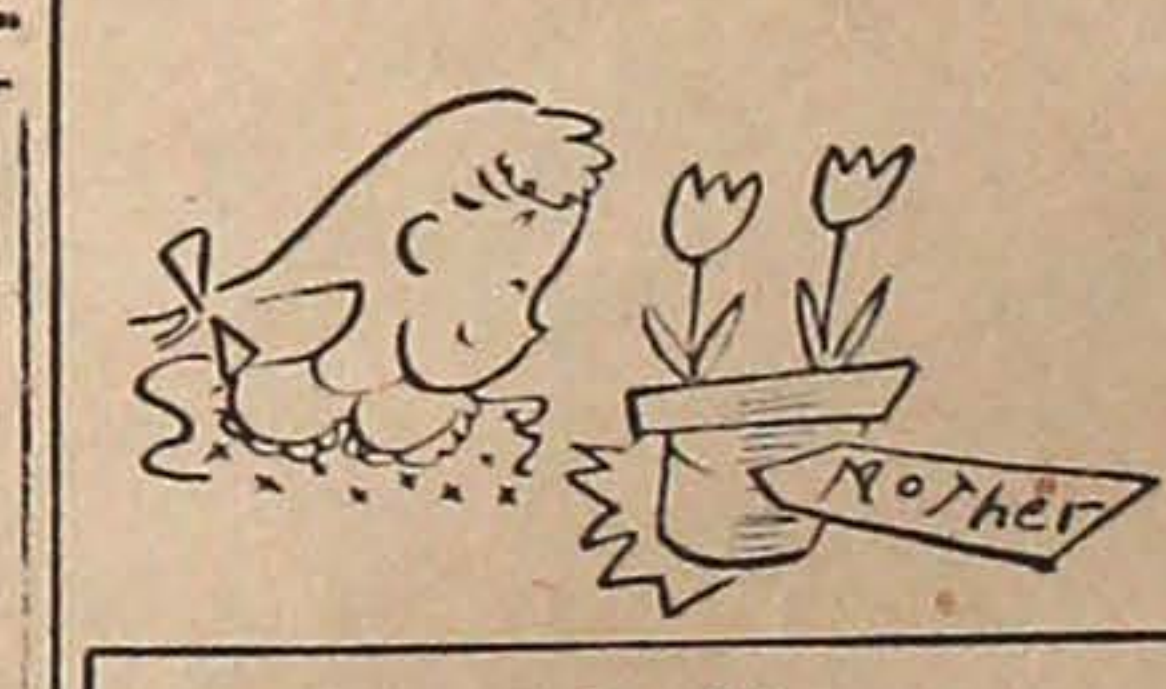
19—"Lollipop Whirl" dance to be sponsored by Lotus Starlettes at Buddhist hall from 8:30 p.m. to 12 midnight. (Stag-Stageette affair open to the public.)



APRIL						
SUN	MON	TUE	WED	THU	FRI	SAT
					1	2
3	4	5	6	7	8	9
10	11	12	13	14	15	16
17	18	19	20	21	22	23
24	25	26	27	28	29	30

14—"Spring Fever" roller-skating party to be sponsored by M.S.G. (Methodist Service Guild) from 10:30 p.m. to 12:30 a.m. at Rollerland Rink in Renton.

16—Easter dance sponsored by U. W. Coed basketball team. Stag-stageette affair.



MAY						
SUN	MON	TUE	WED	THU	FRI	SAT
	1	2	3	4	5	6
8	9	10	11	12	13	14
15	16	17	18	19	20	21
22	23	24	25	26	27	28
29	30	31				

29—Skating party sponsored by Rissho YBA at Rollerland Skating Rink from 10:30 p.m. to 12 midnight.

We sometimes meet an original gentleman, who, if manners had not existed, would have invented them. —Emerson.

Akamatsu of Monterey Hits 568 Series But His Squad Bows in ONBL Match

OREGON NISEI BOWLING LEAGUE STANDINGS

(As of Jan. 28)

Player	W	L
Azumano's	26	10
Maletis Bros.	23	13
J. K. Kida	21	15
Foster Cafe	20	16
Russellville	19	17
Hood River	18	18
Kern Park	18	18
Club Monterey	17	19
Three J's	17	19
Nisei Pool	16	20
Motor Clinic	11	25
Orphans	10	26

(2)—Toya 449, Fujii 404, Sugahiro 485, Takeuchi 461, K. Fujii 474.

"BIG TEN"

Player	Ave.
1. Nobi Furukawa	171.2
2. Tom Saito	169
3. Kay Niguma	167.2
4. Yutch Hori	167.1
5. Tats Asai	166.5
6. George Onishi	165.9
7. Tak Akamatsu	165.8
8. Mas Takasumi	165.6
9. Ozzie Tamura	165.3
10. Tats Nakamura	164.7

NIGHT'S HIGH

Singles—Tak Akamatsu, Club Monterey, 226.

Series—Tak Akamatsu, Club Monterey, 568.

PORTLAND, Ore., Feb. 5—Club Monterey bowed to J.K. Kida, 3 to 1 in an Oregon Nisei Bowling league match last Friday in Hollywood alleys but not after Tak Akamatsu of Club Monterey had scattered the pins for 226, 213 and 129 games for a 568 series.

League-leading Azumano Insurance tripped the Three J's, 3 to 1, in the feature contest.

The results follow:

J.K. KIDA (3)—G. Hirata 428, K. Ikeda 449, B. Kinoshita 378, I. Yamasaki 428, J. Fujii 527; CLUB MONTEREY (1)—T. Okazaki 394, S. Okazaki 410, T. Nakamura 496, M. Okazaki 460, T. Akamatsu 568.

ORPHANS (3)—T. Sono 362, Yamamoto 487, Mishima 382, G. Muramatsu 431, Shiki 540; HOOD RIVER (1)—Y. Hori 511, O. Tamura 460, H. Okimoto 500, M. Takasumi 508, Asai 437.

FOSTER CAFE (3)—J. Onchi 379, Wakamatsu 502, G. Hara 416, Akivama 455, H. Mishima 474; NISEI POOL (1)—T. Yamasaki 410, D. Tanaka 478, J. Miyoshi 404, K. Nakayama 415, K. Niemi 539.

MALETIS BROS. (3)—S. Akagi 483, Y. Akagi 452, E. Saito 456, F. Furukawa 524, T. Saito 470; KERN PARK (1)—G. Itami 505, Hara 424, T. Okazaki 472, H. Itami 399, Komachi 434.

AZUMANO'S (3)—Sasaki 533, Shimizu 444, Sono 492, Onishi 510, N. Furukawa 510; THREE JS' (1)—V. Wong 509, R. Wong 437, S. Lee 440, H. Louie 536, F. Wong 511.

MOTOR CLINIC (2)—Fukui 444, Nambu 520, S. Hinatsu 388, Morioka 503, Kiyokawa 449; RUSSELLVILLE

Pockettes Trim Three J Lead

OREGON NISEI WOMEN'S BOWLING LEAGUE STANDINGS

(As of Jan. 28)

Player	W	L
Three J's	12	4
Bussei Rockettes	9	7
Foster Cafe (formerly ? Marks)	6	10
Tsuboi Jewelers	5	11

NIGHT'S HIGH

Singles—Amy Furukawa, Foster Cafe, 167.

Series—Amy Furukawa, Foster Cafe, 424, Yoko Hishikawa, Rockettes, 424.

PORTLAND, Ore., Feb. 5—Bussei Rockettes narrowed the gap between them and the league-leading Three J's in an Oregon Nisei Women's Bowling league match last Friday in Hollywood Alleys. The Rockettes downed the Three J's, 3 to 1. Only three games now separate the two battling squads.

Foster Cafe, formerly Question Marks, blanked Tsuboi Jewelers, 4-0, in the other tilt.

The results follow:

ROCKETTES (3)—Tamiyasu 396, Fujita 302, C. Tanaka 355, Hishikawa 424, Ninomiya 366; THREE JS' (1)—Yut 411, Lee 310, Wing 333, L. Wong 355, Quan 376.

FOSTER CAFE (4)—Kathleen Sasaki 384, J. Furukawa 357, A. Fukuda 292, K. Akiyama 350, A. Furukawa 424; TSUBOIS (0)—M. Sasaki 351, S. Kiyokawa 321, J. Akiyama 308, Kimi Sasaki 374, Wakamatsu 370.

Gentleman is a term that does not apply to any station, but to the mind and feelings in every station. —Talfourd.

Come to Church

Every church is requested to send in its notices by Tuesday noon of each week so that the changes may be made accordingly and in time for the Wednesday editions of that week.

1ST CHRISTIAN INTERRACIAL

8 p. m.—Services by the Rev. J. J. Pruitt in YMCA chapel, Fourth and Madison.

BAPTIST

9:45 a.m.—Sunday School.
10 a.m.—Issei worship service.
11:15 a.m.—Nisei worship service.

BUDDHIST

10 a.m.—Sunday School. Masue Kihara, chairman. Dharma class, receptionist group.
11 a.m.—Young people's devotional service. Starlettes will be in charge. Lotus girls will sing, and the Rev. Masunaga will speak.

SUSUMI-BUTTERWORTH FUNERAL SERVICE

300 East Pine EL. 0558
After 6 p.m., call MA. 0949

CONGREGATIONAL

10 a.m.—Issei worship service.
10 a.m.—Sunday School for nursery, kindergarten, beginners, primary and juniors. New boys' class in primary department.
11 a.m.—Nisei worship service.
8 p.m.—Bible study class for Nisei every Monday.

METHODIST

10 a.m.—Sunday School and Issei worship service.
11 a.m.—Nisei worship service.
7:30 p.m.—Young people's fellowship.

MARYKNOLL

9 a.m. and 10:30 a.m.—Low Mass. Benediction will be held following 10:30 Mass.

NICHIREN BUDDHIST CHURCH

10 a.m.—Kindergarten children and juniors service.
11 a.m.—Young people's service in English.

PRESBYTERIAN SUNDAY, Feb. 6

9:30 a.m.—Church school for all ages.
10 a.m.—Issei worship service.
10 a.m.—Young people's Bible discussion.

11 a.m.—The Rev. Hirata will speak on "God's Law of Life" at Nisei service.
6:30 p.m.—Junior Westminster Fellowship.
7 p.m.—Senior Westminster Fellowship.

ST. PETER'S MISSION

9 a.m.—Issei Holy Communion. Rev. G. Shoji.
9:45 a.m.—Sunday School, Miss Gladys Gray.
11 a.m.—Nisei Worship Service.
7:30 p.m.—Fri.-night YPF meetings.

STANLEY Y. KARIKOMI

District Representative

THE MANUFACTURERS

Insurance LIFE Company

Branch Office

Seattle 1

531-6 Skinner Bldg.

Washington

Telephone: ELiot 3993

Residence: CAPITAL 8602

Maneki
Sukiyaki
Tempura
Private Parties
MAin 9723 304 6th Ave. So.

Main Shokudo
All Kinds of Japanese Foods
505 Main St. SE. 9429

MAIN DRUG CO.
Prescriptions Carefully Compounded
Phone MAIn 6647
522 Main St. Seattle 4, Wash.

Rainier Garage
Auto Repair
H. Furumoto Res. MI. 0832
109 18th So MI. 1320

IKEDA & CO.
WHOLESALE GROCERS
SEneca 2196
600 6th Ave. S. Seattle 4, Wash.

Richard's Jewelry
Expert Watch Repair
—Official N. P. Railroad Time Inspector—
Dr. Duncan Tsuneishi
Optometrist
215 4th Ave. So. Seattle 4, Wash. SE. 2151

Patronize Your Advertisers

HOME PORTRAITURE COMMERCIAL CAMERA REPAIR

NISEI FOTOSHOP
308-20th Ave.
"Complete Photographic Service"
Personal Representative
Tall's Fifth Avenue
1409 Fifth Ave.
GEORGE MORIHIRO PR. 7927

Patronize Your Advertisers

TOKUDA DRUG
1724 Yesler GEORGE TOKUDA, Prop. CA. 3611
Prescriptions carefully compounded by REGISTERED PHARMACISTS
"Favorite Nisei Fountain"
SERVING FAMOUS WELCOME GUEST ICE CREAM DRUGS MAGAZINES GREETING CARDS SUNDRIES

Patronize Your Advertisers

Shoes for the entire family.

Better Fit MEANS Better Posture
WEATHER-BIRD Arch Helper SHOES
Poorly fitting shoes fail to give proper bodily support. Spare your child future foot ills... give him the advantages of these scientifically designed shoes.
We check our fitting with X-Ray

JACKSON FURNITURE
General Electric Agents
Fuller Paint Products
Home & Hotel Supplies
Linoleum
Window Shades
650 Jackson SE. 0465
Seattle, Wash.

Urakawa's TOKTOW SHOE STORE
826 Jackson St. SEneca 7076
Seattle, Wash.
Store hours: 9 a.m. to 7 p.m., week days.
9 a.m. to 9 p.m., Saturdays.

NEW PHILCO Television CONSOLETTA
It's here from Philco—the Leader! The New Philco 1040 brings you a big 52-inch picture... clear, bright and sharp... on a 10-inch picture tube... on a gorgeous mahogany consolette cabinet for perfect eye-level viewing. Sensationally low-priced!
with Automatic Tuning
\$359.50 Plus federal tax.
20% down
Hikida Furniture
818-20 Jackson St. ELiot 2935
Res. FRanklin 4755