

U.S. Farmwives Visit German Bakery



MUNICH, GERMANY — (Soundphoto) — Members of the "Mary Foster woman's tour of Europe" — a group of mid-west farm women — are pictured during a visit to the Anton Seidl Bakery in Munich, as they watch the staff of life rolling out. L. to R.: Mrs. L. Pilger, Stanton, Neb.; Mrs. E. McDowell, Gothenburg, Neb.; Mrs. H. Giese, Dunlap, Iowa; Mrs. R. Olsen, Ellsworth, Iowa; Mrs. S. Knudson, Sioux Rapids, Iowa; Mrs. W. Bodemer, Cozad, Neb.; Mrs. R. Kloppe, Council Bluffs, Iowa; Mrs. E. McMullen, Stella, Neb.; Mrs. M. Bylander, Beresford, S.D.; Mrs. M. Rowe, Fremont, Neb.; and Mrs. H. Drinklage, Pender, Neb.

JACL ADC Urges 'Positive Action' To End All Segregation in Army

WASHINGTON, D. C., April 30 — The Japanese American Citizens League, Anti-Discrimination Committee, today urged the President's Committee on Equality of Treatment and Opportunity in the Armed Services to "take positive action to end all segregation in the military forces."

Mike Masaoka, national JACL ADC legislation director, in testimony before the committee, explained the JACL stand when he said:

"We believe that segregation creates and foments distinctions and antagonisms between groups, destroying that harmonious relationship between troops necessary to achieve victory."

"We believe that segregation plays into the hands of our enemies and thereby enables them to rally forces to their banners which ought to rush to ours."

"We believe that where one serves his country there should be no discrimination in treatment or opportunity because of color, creed or national origin."

"Thus, we urge this Committee to take positive action to end all segregation... not only that the services as a whole will benefit, but that individuals serving with the armed forces will take an increasingly cooperative part in them. We urge this action so that all America will have another example of democracy at work."

Masaoka cited the experiences of Nisei serving in the army during the war in both the segregated 442nd and as non-segregated troops in the Pacific.

He said the experiences of the 442nd showed it was not uncommon for pharmacists, attorneys and professional men to serve as front-line infantry privates, although where Nisei were used on a non-segregated basis, their talents usually fitted the job for which they were selected.

"Since only Japanese Americans could be used as replacements for the 442nd," he added, "there were times when it was hard put to field enough troops to carry out assignments."

As an ethnic group, he continued, "the Japanese Americans in the Pacific suffered no disproportionate losses, such as in Italy and France with the 442nd."

"It has been said," he testified, "that a poll of former members of

the 442nd revealed that the overwhelming majority preferred to rejoining the 442nd should they be recalled to active duty."

"The only inference which can be drawn from this is that former members of the 442nd reveal a very normal pride in their old organization, Nisei in the Pacific have expressed a preference, if recalled, to return to duty with their old organizations."

The wartime experiences of Japanese American soldiers, both as members of a segregated unit and as members of non-segregated units, suggest that in terms of human dignity as well as in terms of maximum efficiency, a policy of equal treatment and opportunity is best and most in keeping with American ideals and aspirations."

He pointed out the 442nd could not be "categorized in the usual sense of the word" with segregated troops for it was "conceived, organized and operated for a special purpose... We fought as a group to earn for ourselves and others the right to be judged on our worth as individuals, and not as associated members of a group or race to which we happen to belong through an accident of birth."

The President's Committee is headed by Charles Fahy, former solicitor general of the United States.

NWMC Members To Assemble

General meeting of the Nisei War Memorial Committee will be held at 7:30 p.m., Tuesday, May 3, in the Seattle Buddhist temple, it was announced today by Frank Hattori, executive secretary.

Last Rites for Sgt. M. Nakamura Will be Held Saturday, May 7

The remains of Sgt. Masaki Henry Nakamura, who died in a plane crash at Okinawa, will be reinterred in the Veterans memorial plot in Washelli next Saturday, May 7, according to Lefty Ichihara of the Nisei Veterans Committee.

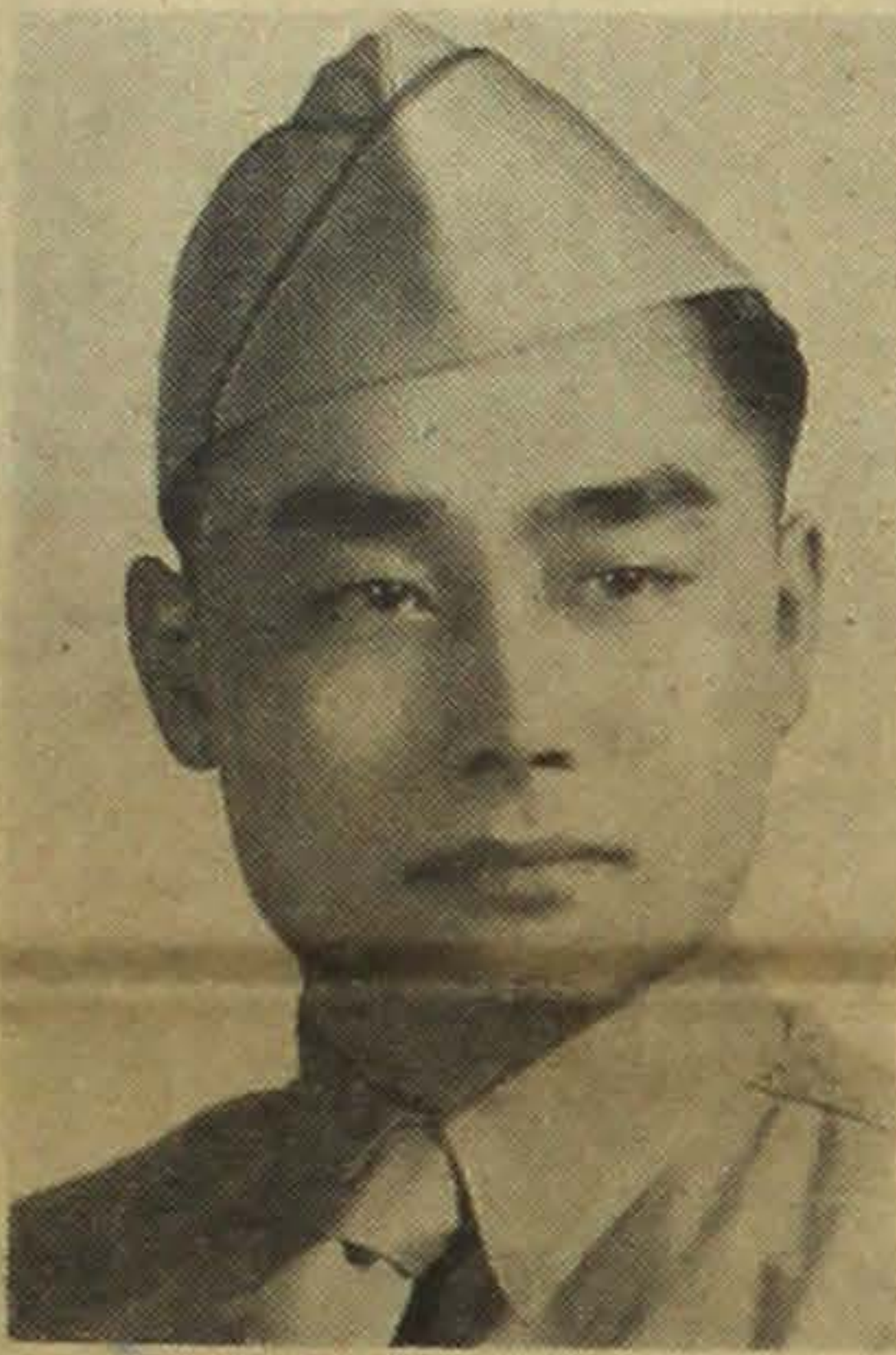
Funeral services will begin from 1 p.m. in the Seattle Buddhist temple with the Rev. T. Ichikawa officiating.

Sgt. Nakamura was born on July 3, 1908 at Gold Bar, Washington. After completing 6th grade, he accompanied his parents to Japan. Since returning to the United States he worked in Pike Place market.

Inducted into the Army on March 3, 1941, he completed his basic training and was discharged on Nov. 6, 1941. He was recalled into active service on Feb. 2, 1942 and assigned to station hospital at Camp Crowder, Mo.

Sgt. Nakamura was transferred to the Military Intelligence Language School at Camp Savage, Minn., and after his infantry training at Fort McClellan, Ala., he was attached to ATIS in Manila. It was while enroute to his post that Sgt. Nakamura was killed in a plane crash on August 13, 1945.

Surviving are his widow, Mrs. Fumi Nakamura, and daughter,



SGT. MASAKI H. NAKAMURA

Sandra Hatsumi of Spokane, Wash.; two brothers, Kaneji and Sueki; sisters, Mrs. Yoneko Kanemoto and Mrs. Mitsu Ichishita, all of San Jose, Calif.; and another sister, Mrs. Tomeko Nishimura of Chicago, Ill.

Funeral arrangements are under the direction of Butterworth Mortuary and the NVC.

LOCAL YWCA NOTES BUSY WEEK - END

"YWCA — Your Window to the World" is the theme of National YWCA Week, which is being observed in Seattle and throughout the country this week, April 24 to 30.

A busy week has been underway for the Central YW and its branches and centers. Mayor William F. Devin last Thursday proclaimed the week locally, and was accorded honorary membership in the Seattle YWCA for his untiring work on behalf of teenagers. Presenting him with a handsome membership certificate were Teresa Fujino of Franklin high school, Y-Teen membership chairman for the Interclub Council; Marilyn Swart, West Seattle Y-Teen who is also a member of the council, and Ardythe Arndt, Franklin Y-Teen. Mrs. Kenneth Morford, 1226 39th Ave. N., president of the Seattle YW, witnessed the brief ceremony.

Blind Nisei GI Visits in East

WASHINGTON, D. C., April 30 — Yoshinao (Turtle) Omiya, of Honolulu, a smiling cheerful blind veteran of the 100th Infantry Battalion, left here Tuesday after a visit to the JACL national office to call on friends in Philadelphia and New York before stopping in New Jersey to train with his second seeing-eye dog.

Omiya was accompanied by his attendant, Miss Yuki Hori. He will train with the dog for several weeks before returning to Hawaii. His first seeing-eye dog was accidentally killed.

Patronize Your Advertisers In The Northwest Times.

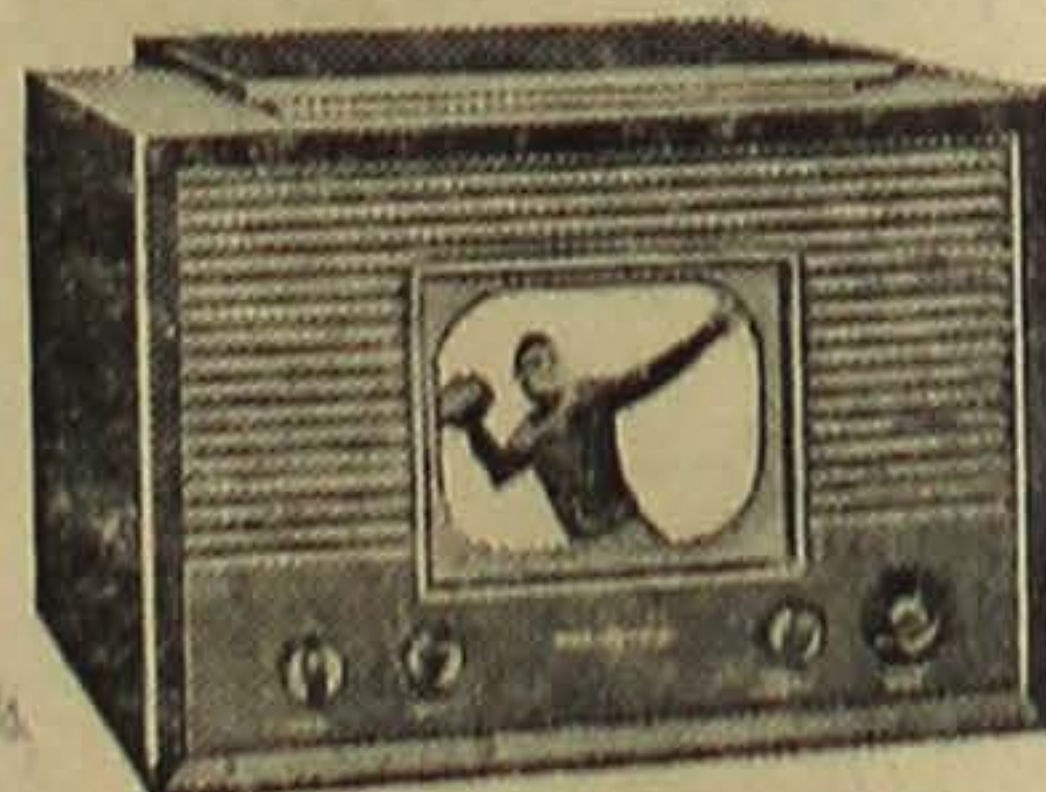
MOVED

to a new location — where we can give more and better service on your fender work and painting.

R. S. AUTO REBUILD

1265 King St.

Tel. CA. 8365



The "Onlooker" — RCA Victor 8T243

Television fun year in and year out — at an amazingly moderate cost. The "Onlooker" gives you big 52 sq. in. clear, bright, steady pictures, locked in tune by RCA Victor's Eye Witness Picture Synchronizer. Controls are simplified. Clean-line cabinet in Walnut, Mahogany or, for slightly more, Modern Blond AC.

\$339.50

15 per cent down 21 months to pay

W. NAKAMURA CO.

664 Jackson Street

SE. 4716

Seattle 4, Wash.



Consult John Fukuyama for floral details on the most important event of your lifetime!

The Flower Shoppe
MA. 1467

University Flowers
EV. 1560

Seattle, Wash.

We're Over Top In ADC Drive, Treasurer Says

Latest Flow of Contributions Totals \$1,532; District 16 Gives Most Heavily

Incomplete returns indicated that the local ADC (Anti-Discrimination Committee) fund drive has gone "over the top," it was reported today by Tad Yamaguchi, treasurer of the drive. The ADC goal in this area was \$5,000.

The latest flow of collections amounted to \$1,532, Yamaguchi said.

The teams and their totals follow: DISTRICT 36 (Bellevue) — \$77.50; DISTRICT 38 (Bainbridge) — \$123; DISTRICT 26 — \$118; DISTRICT 6 — \$356; DISTRICT 22 — \$85; DISTRICT 35 — \$52.50; DISTRICT 32 — \$35; DISTRICT 3 — \$140; DISTRICT 27 — \$73; DISTRICT 16 — \$411; DISTRICT 34 — \$51; DISTRICT 13 (additional contribution) — \$10.

The list of the above-mentioned contributions follows:

● DISTRICT 36 (Bellevue) — T. Sakaguchi, A. Tsuchima, T. Yabuki.

Mutsuo Hashiguchi	\$5.00
T. Suguro	5.00
Tokio Hirotsuka	5.00
H. Ito	5.00
J. Matsuzawa	5.00
G. Muromoto	5.00
C. Numoto	5.00
T. Miyamoto	5.00
T. Sakaguchi	5.00
A. Tsuchima	5.00
T. Yabuki	5.00
A. Aramaki	5.00
Miss M. Shiraishi	3.00
H. Mizokawa	3.00
S. Sambo	3.00
J. Kobayashi	3.00
K. Shimano	2.00
G. Tamura	2.00
H. Kizu	1.00
T. Kawata	.50
	\$77.50

● DISTRICT 38 (Bainbridge) — Koura, Amatatsu, Nakao.

Koura Farm	\$10.00
K. Nishi	5.00
Y. Suematsu	5.00
H. Furukawa	5.00
S. Sakai	5.00
K. Nishimori	5.00
Y. Moji	5.00
I. Hayashida	5.00
M. Chihara	5.00
J. Seko	5.00
S. Furukawa	5.00
M. Nakata	5.00
I. Nakao	5.00
Y. Amatatsu	5.00
Y. Katayama	4.00
Z. Harui	4.00
S. Takemoto	3.00
M. Terashita	3.00
K. Mikami	3.00
T. Sakuma	3.00
T. Nagata	3.00
I. Katayama	3.00
M. Yamashita	3.00
	\$77.50

We Will Re-Open

For Business

Sunday, May 1

MAIN SHOKUDO

Extensive remodeling done.

505 Main St. SE. 9429

Seattle, Wash.

TEEN AGERS and BEGINNERS

Sign up now for Summer Leagues Starting May 2



306 Main St.

MAIN BOWL

MA. 9399

S. Yoshida	3.00
Mrs. T. Taniguchi	3.00
S. Ohmoto	3.00
Mrs. K. Yamagata	2.00
T. Moritani	2.00
S. Suko	2.00
U. Matsushita	2.00
I. Kusaka	2.00
	\$123.00

● DISTRICT 26 — S. Terazawa

T. Koba, Ken Nogaki	\$5.00
T. Koba	5.00
K. Horita	5.00
H. Aoki	5.00
Masaki Nakata	5.00
T. Takehara	5.00
N. Uyeda	5.00
R. Momoda	5.00
S. Sasaki	5.00
Ted Hayashi	5.00
Kengo, Nogaki	5.00
M. Ito	3.00
T. Kanazaki	3.00
Mrs. Ben Ito	3.00
W. S. Terazawa	3.00
Reo K. Inouye	2.00
Henry Tamada	2.00
	\$66.00

Albert Bonus \$2.00

Fujitaro Kubota (in memory of Mrs. Kumae Kubota) 50.00

52.00

● DISTRICT 6 — Minato, Otsu, Shi, Shimokon, Ota.

F. K. Minato	\$100.00
H. M. Hayasaka	50.00
Suyejiro Kimura	20.00
Menlo Hotel	10.00
Hotel Lee	10.00
T. Kesamaru	10.00
Masashige Ota	10.00
Jitsuo Otsu	10.00
Richard H. Setsuda	10.00
K. Kawabata	5.00
Tamaki Nagai	5.00
H. Suzuki	5.00
Tamotsu Nagai	5.00
Hirabayashi	5.00
Heldi Flower Shop	5.00
Haruo Hashiguchi	5.00
Chojiro Kube	5.00
Tokuma Morikawa	5.00
R. Kodama	5.00
K. Sugino	5.00
M. Tamaki	5.00
M. Shimokon	5.00
Nakao	5.00
S. Nakashima	3.00
S. Kono	3.00
Kenichi Kajita	3.00
Saburo Morishima	3.00
Toshio Morishima	3.00
Yuhei Shimanaka	3.00
Masachi Maniwa	3.00
Rokuemon Hamano	3.00
Hiroshi Nakano	3.00
Paul Minato	3.00
Naoki Sakaguchi	3.00
Masao Hayashi	2.00
Roy Yasukawa	2.00
N. Koizumi	2.00
Yukichi Sasaki	2.00
Yelshiro Kuranaga	2.00

(Continued on Page Four)

ACKNOWLEDGMENT

Nisei War Memorial Committee wishes to acknowledge a \$125 contribution from Albert D. Bonus, and a \$10.00 donation from Mrs. Tsune Ito. Mrs. Ito's contribution was in memory of her late husband, Chusaburo Ito.

Patronize Your Advertisers In The Northwest Times

The Northwest Times

THE ONLY ALL-ENGLISH NISEI NEWSPAPER
IN THE PACIFIC NORTHWEST
Established January 1, 1947

Published every Wednesday and Saturday of each week.
Editorial offices at 304 Main St., Seattle 4, Wash. Phone
SEneca 5594. Office hours: 9 a.m. to 6 p.m. daily except
Sundays and holidays.

Editor & Publisher Budd Fukui
Associate Editor Hideo Hoshida
Art Editor Tom Tsutakawa

SPECIAL REPRESENTATIVES

TACOMA—Kimi Fujimoto
1710 Fawcett Ave., Tacoma Wn.
PUYALLUP—Mrs. Arthur Yamada
P. O. Box 117, Milton, Wash.
PORTLAND—Tom Okazaki
7404 N. Denver, Portland, Oreg.

WAPATO—Mrs. Kara Kondo
P. O. Box 816, Wapato, Wash.
ONTARIO—Mrs. James Watanabe
Rt. 1, Payette, Idaho
SPOKANE—Norio Wakamatsu
W. 325 Trent Ave., Spokane, Wn.
Bus. MAin 6712 Res. L-2382

Subscription Rates
One month \$.75
Six months 4.25
One year 8.00

Classified Ads
Minimum charge 60 cents
Per word insertion 5 cents

Today's Editorial:

It's YWCA Week Now

Mathematics to the contrary, we know of a triangle that has six angles.

It's the Blue Triangle of the Young Women's Christian Association, of course. The six angles it represents are the friendship, fellowship and fun of the YW program, and the development of mind, body and spirit which accompanies such a program. Carrying our mathematics still further, the Blue Triangle stands for Y-Teens, employed women and young wives and mothers, all of whom find lasting reward in YWCA membership.

Mayor William F. Devin, in proclaiming this as National YWCA Week, said, "The Young Women's Christian Association has long been identified as one of those worthwhile organizations dedicated to the enrichment and enlightenment of our people's lives . . . In view of the necessity for such unselfish and constructive work throughout the nation and in our community, I take great pleasure in designating the period of April 24 through 29 as Young Women's Christian Association Week."

This is the week to visit the YWCA, become better acquainted with the many interests it has to offer, and join with three million other women in building a fellowship of women and girls.

New Screen Test



Mary Peters dips new lumite window screen in a salt-water test off Florida and proves new durable plastic screening won't corrode or rust. She wishes a movie test would be as simple.

Seabrook Leader OK's Judd Bill

WASHINGTON, D. C., April 30 — Harold R. Fister, personnel director at Seabrook Farms, Seabrook, N. J., today was enroute home after revealing the interest of C. F. Seabrook, owner of Seabrook Farms, in the Judd bill.

Fister visited both New Jersey senators, H. Alexander Smith and Robert C. Hendrickson, to explain Seabrook's interest in the measure. Approximately 1,500 Japanese are employed at Seabrook Farms.

Fister, a member of the Seabrook JACL chapter, was a former resettlement officer for the WRA at Cleveland, New York and Seattle.

The Enlisted Reserve Corps of the United States Army is expanding, and there are openings for veterans of all the armed forces. Why not join today?

Member of
Certified Independent
Grocers

DEARBORN Cash Grocery

Mits Abe
We Deliver

725 Dearborn St. ELiot 9188

Yesler Hardware & Plumbing Supplies

Kiyoshi Yasui
Bob Hikida
1713-15 Yesler EA. 5660
Seattle 22, Wash.

Gyokko-Ken Cafe

508-510 Main St.
MA. 3662
Seattle 4, Wash.

N. P. Hotel

306 6th Ave. S.
Y. FUJII

Phone
MAIn 3952

FOR BEVERAGES . . .
CALL

Over the Top Beverage

Three Stores to Serve You.

NOBI TAKAHASHI
523 Jackson St.
SE. 5878

PANCHO CAPPELETTI
115 Washington
SE. 9125

TEIKO HAMAOKA
607 Yesler
SE. 9233

Frank Russo, Prop.



WHY NAME CALLING?

By GEORGE S. BENSON
President of Harding College
Searcy, Arkansas



THE CALLING of names is a propaganda technique based on delusion and trickery. It has been common in politics for a long time, and has done its part to give politics a bad reputation among the people in general.

Americans are accustomed to a certain amount of this in election campaigns. But surely we have not come to the place where we expect it in the halls of Congress. In legislative sessions, when serious national problems are being discussed, it is a bit disturbing to hear so much name-calling. Any American has the right to disagree with another and to speak out his mind. But it is not necessary always to discredit those who disagree with us.

Freedom is Fragile

THE WORST thing that has happened in America in the last twenty years has been the tendency to divide our people into class groups.

Our country has long been known as the "melting pot," where immigrant lads and backwoods boys can become bankers and industrialists. High born or low born, rich or poor, in America it never really has mattered. The important thing in America is that a man may plan and live out his own dream.

Some folks apparently have forgotten that these freedoms of ours are fragile and perishable. Unless we attend to the keeping of each of them, it is possible to lose them all. The building of class consciousness is one of the very worst things we can do to our American life. It could be the entering wedge of all kinds of "isms," any one of which in time might well put us in chains.

A Low Level

THE TERM "big business" is used as name-calling by unthinking

persons and by those who have slipped up their sleeves. Name-calling of business, big or little or any size, can have nothing but an unwholesome effect upon the American scene. A U. S. Senator was quoted in the press recently as saying: "It appears that big business would rather risk a continued inflation of prices than balance the budget through increased taxes."

You see, all the people of the nation are paying about a third of their total income in taxes. Must anyone who believes that taxes should not be raised be placed on the receiving end of a name calling campaign? One senator on the Senate Labor Committee keeps branding as "fascist" certain of those who oppose increased taxation.

Does this mean the Senators cannot make out a reasonable case for increased taxes? Does it mean that they can defend the case for higher taxes only by hanging ugly tags on those who oppose tax increases?

If we must try to turn labor against management — if we must turn the public in general against employers who are providing millions of jobs at the highest wages ever earned — then I am afraid we have reached a level that signals the end of our American way and our high standard of living.

Frank's Jewelry

617 Jackson St.
Seattle, Wash. EL. 8377
FRANK Y. KIAMCTO

Main Shokudo

All Kinds of Japanese Foods
505 Main St. SE. 9429

Powder Box Beauty Salon

KIKUE HAGIMORI
MARY TSUCHIKAWA
526 King St. MAIn 2973
Seattle, Wash.

NEW RICHMOND HOTEL

(Second Largest)
Seattle, Wash.
Opposite both railway depots.
Fourth at Main St.
Special rates for groups
Or Families.
Write for rates.

Patronize Your Advertisers

Shoes for the entire family.

Better Fit
MEANS
Better Posture



Poorly fitting shoes fail to give proper bodily support. Spare your child future foot life . . . give him the advantages of these scientific, well designed shoes.



We check
our fitting
with X-Ray

Urakawa's

TOKTOW SHOE STORE

826 Jackson St. SEneca 7076

Seattle, Wash.

Store hours: 9 a.m. to 7 p.m., week days.

9 a.m. to 9 p.m., Saturdays.

Come to Church

Every church is requested to send in its notices by Tuesday noon of each week so that the changes may be made accordingly and in time for the Wednesday editions of that week.

see every Monday.

1ST CHRISTIAN TERRACIAL
3 p.m.—Services by the Rev. J. Pruitt in YMCA chapel, Fourth and Madison.

METHODIST
10 a.m.—Issei service. Sunday School.
11 a.m.—Nisei worship service.

MARYKNOLL
9 a.m. and 10:30 a.m.—Low Mass. Benediction will be held following 10:30 Mass.

NICHIREN BUDDHIST CHURCH
10 a.m.—Kindergarten children and juniors service.
11 a.m.—Young people's service in English.
2 p.m.—Japanese Service

PRESBYTERIAN
11:10 a.m.—Nisei Worship Service. Rev. Hirata to speak on "God, Man, and Woman."

ST. PETER'S
9 a.m.—Issei Holy Communion. Rev. G. Shoji.
9:45 a.m.—Sunday School, Miss Gladys Gray.

11 a.m.—Nisei Worship Service.
7:30 p.m.—Fri.-night YPF meetings

Patronize Your Advertisers
In The Northwest Times.

WHEN YOU WANT . . .

Diamonds
Watches
Silverware

Call SAIBO FUJII

Bus. MA. 7670 Res. CA. 2517
Personal Representative

Friedlander & Sons.

5th at Pike
CONVENIENT CREDIT—NO INTEREST—A YEAR TO PAY

CHIHARA

presents
NEW LIFTS TO LIVING
by Westinghouse

Everything you want in a Refrigerator!

Westinghouse



PLENTY-PLUS
REFRIGERATOR

PLENTY-PLUS
Convenience
Long Life
Storage Space
Economy

American
Heritage

SPECIAL SALE

Westinghouse Refrigerators

7.04 Cubic Feet \$199.50
8.04 Cubic Feet (Other Make) 185.00
9 Cubic Feet 235.00

Pre-war prices. Don't miss this chance. This sale lasts only a few days. Small down payment, a year to pay.

Chihara Appliance Co.

Chihara Jewelry Co.

612-614 Jackson St. MAIn 2275

Methodist Group To Hear Ashby

Dr. Paul Ashby, former Methodist church district superintendent of the Spokane area and now head of the conference claimants at the Seattle-Tacoma district office here, will speak at 11 a.m., this Sunday, May 1, in the Seattle Japanese Methodist church. His topic will be "If You Were God".

A friend of the Japanese, he was the one who aided in the acquisition of the Spokane Japanese church from the Swedish Mission church.

Mother's Day Tea

The Service Guild, the Youth Fellowship, the College and Business Girls and the Junior Girls will have a Mother's Day tea party at 2 p.m. on Mother's Day, Sunday, May 8, in the Seattle Japanese Methodist church.

Takano Studio

HENRY Y. MIYAKE
Photographer

668 Jackson St.
Seattle 4, Wash.

Phone MA. 8186
CA. 8952

SUSUMI-

BUTTERWORTH
FUNERAL SERVICE

300 East Pine EL. 0558

After 6 p.m., call
MA. 0949

Motorola Car Radio

Complete Automotive Repairing
Lubrication
Gas—Oil—Accessories
New Tires — New Batteries

7TH AVENUE SERVICE

761 Jackson St. EL. 9853 Seattle 4, Wash.
Charles C. Teoh — Ted K. Imanaka — George Koyama

Richard's Jewelry

Expert Watch Repair
—Official N. P. Railroad Time Inspector—

Dr. Duncan Tsuneishi

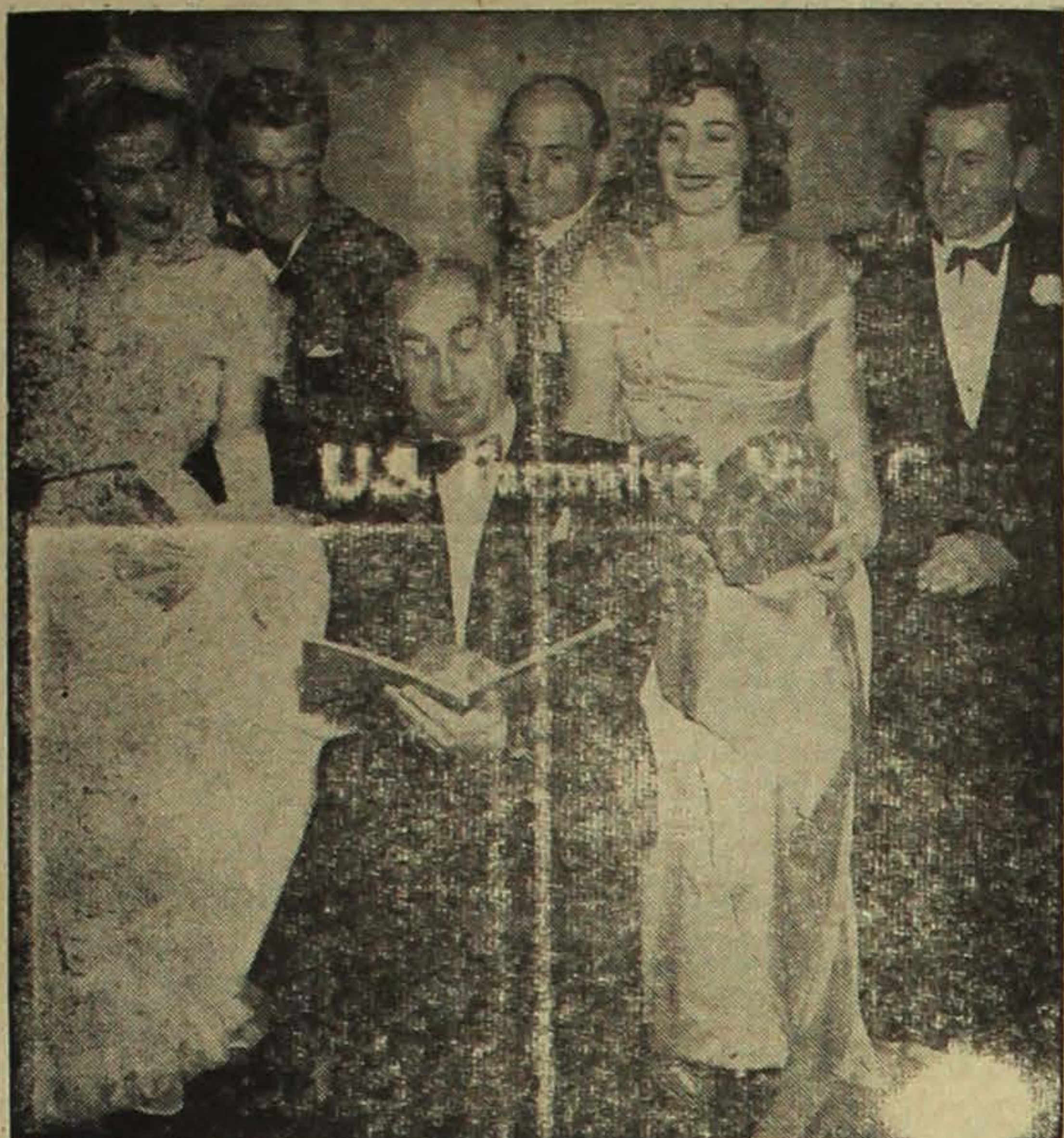
Optometrist
216 4th Ave. So. Seattle 4, Wash. SE. 2131

International Realty

Real Estate and Insurance
Business Opportunities
Notary Public

James M. Matsunaka
659 Jackson St. MAIn 1522
Seattle 4, Washington

They Rehearse for 'Merry Widow'



Leads and principals of the cast of the "Merry Widow" to be produced under the sponsorship of the Seattle Park Department in the Civic Auditorium on Sunday, May 8, go over the score with Gustave Stern, conductor-director, 1613 Grand Ave.; Frank Kinkaid, comic, 423 Terry; Lorraine Besagno, second feminine lead, 408 Aloha St.; Charles Sherwood, male lead, 916 27th S.

Left to right: Tera Esta (Mrs. Arthur Thue), prima donna, Bremerston; William Carson, romantic principal, 18322 8th N. E.; Gustave Stern, conductor-director, 1613 Grand Ave.; Frank Kinkaid, comic, 423 Terry; Lorraine Besagno, second feminine lead, 408 Aloha St.; Charles Sherwood, male lead, 916 27th S.

Nisei Pool Pulls Two Games Ahead Of Three J's in Oregon Pin Play

OREGON NISEI BOWLING LEAGUE STANDINGS (As of April 23)

	W	L
Nisei Pool	29	11
Three J's	27	13
Club Monterey	26	14
Maletis Bros.	24	16
Azumano's	21	19
Hood River	19	21
Orphans	19	21
Kern Park	17	23
Motor Clinic	17	23
Russellville	15	25
Foster Cafe	15	25
J. K. Kida	11	29

NIGHT'S HIGH

Singles — J. Miyoshi, Nisei Pool, 211.
Series — J. Miyoshi, Nisei Pool, 550.

PORTLAND, Oreg., April 30 — Nisei Pool pulled three individuals' 500-plus series to pull two games ahead of second-place Three J's in the Oregon Nisei Bowling league last Friday in the Hollywood Alleys. The winners' J. Miyoshi banded out a 550 series which included a 211 high game. Miyoshi's teammates, Kay Niguma and Duke Tanaka, came through with 514 and 503 respectively.

Three J's dropped back on account of their being held to a 2-2 draw by Motor Clinic. Motor Clinic's T. Kiyokawa assembled 159, 194 and 182 games for a 535 series. V. Wong was the only one hitting fairly good for the Three J's.

The results follow:
FOSTER CAFE (3) — Wakamatsu 541, Hara 455, Onchi 403, Mishima 412, Akiyama 439; HOOD RIVER (1) — Tamura 518, Takasumi 463, Inukai 474, Okimoto 411, Asai 486.

THREE J'S (2) — F. Wong 474, S. Lee 419, H. Louie 424, R. Wong 464, V. Wong 513; MOTOR CLINIC (2) — K. Namba 452, H. Hinatsu

412, T. Fujii 386, H. Kasa 495, T. Kiyokawa 535.

MALETIS BROS. (4) — S. Akagi 460, Y. Akagi 487, T. Hachiya 426, E. Saito 519, T. Saito 520; J. K. KIDA (0) — J. Fujii 380, K. Ikeda 411, B. Onishi 388, G. Hirata 423, I. Yamasaki 461.

AZUMANO'S (4) — Sasaki 542, Shimizu 486, Sono 471, Onishi 424, Furukawa 510; KERN PARK (0) — Komachi 468, F. Morishita 335, Ochiai (one game) 174, H. Itami 381, T. Okazaki 544, Dummy (two games) 270.

MONTREY (3) — S. Okazaki 479, Nakamura 499, Mio 504, M. Okazaki 489, Akamatsu 514; ORPHANS (1) — R. Mishima 431, Muramatsu 444, C. Sono 509, Yamamoto 371, T. Shilki 481.

NISEI POOL (4) — D. Tanaka 503, J. Miyoshi 550, K. Nakayama 480, J. Furukawa 415, K. Niguma 514; RUSSELLVILLE (0) — G. Toya 401, E. Fujii 465, Sugahiro 505, S. Takeuchi 412, K. Fujii 505.

Veterans! Join the Army reserve, and stay at home! You'll draw Army pay for regular meetings, and promotions are wide open in the Army enlisted reserve!

AL MAR'S
12th Ave. Food Market
CA. 0700 Free Delivery
118 12th Ave. Seattle

Patronize Your Advertisers In The Northwest Times.

MAYNARD CAFE
Oriental and American Dishes
George Nese
Joe Tanaka
417 Maynard SE. 9464
Seattle, Wash.

TERRY'S AUTO SERVICE
1202 Rainier Ave. EA. 9459
Gas-Oil-Auto Repair
MORIO TERAYAMA

BUSSEI WIN ALLEY CUP; BEAT- 3-J'S

PORTLAND, Oreg., April 30 — Bussei Rockettes, first half champions, nosed out the Three J's, second half winners, for the championship of the Oregon Nisei Women's Bowling league last week-end in the Hollywood Alleys.

The two squads battled it out over a five-game stretch with the Rockettes emerging victorious by 13 pins. The final count was: Bussei Rockettes 3519, Three J's 3506.

Martha Tanabe's 755 total paced the Rockettes. Lois Yut was high for the losers with 725.

The results follow:

BUSSEI ROCKETTES (3519) — Jinx Tamiyasu (four games) 513, Marian Hara (one game) 135, Meko Fujita 573, Chiyu Tanaka 548, Yoko Hishikawa 631, Martha Tanabe 755; THREE J'S (3506) — Lois Yut 725, Marian Lee 621, Audrey Quin 555, Lil' Wong 609, Chris Quan 646.

	Scratch	Hdcp.	Net
1st game	574	80	654
2nd game	650	71	721
3rd game	651	71	722
4th game	647	71	718
5th game	633	71	704

	Scratch	Hdcp.	Net
1st game	655	70	725
2nd game	618	70	688
3rd game	607	70	677
4th game	626	70	696
5th game	650	70	720

Baseball Sked

CITY LEAGUE
SUNDAY, May 1
At Rainier
2 p.m. — Nisei Veterans vs. Seattle Elks.

PUGET SOUND LEAGUE
SUNDAY, May 1
At Lower Woodland
12 noon — Port of Embarkation vs. Western Giants.

NORTHWEST TIMES LEAGUE
SUNDAY, May 1
At Garfield No. 1
12 noon — Washington Wood vs. Vets.

At Jefferson No. 1
2 p.m. — Lotus vs. Monarchs
At Georgetown
2 p.m. — Fife vs. Savoy's.

Note: In each case, the last named club is the home team. Tacoma bye.

Hidaka, Arita Set Torrid Pace In Main Bowl Men's Singles

Tom Hidaka's 866 net score stood out like a beacon on a lonely light-house in the men's singles of the week-long Main Bowl house handicap tournament. Hidaka, who rolls for Main Drug, posted 777 scratch over a four-game series, equivalent

to 194 average per game. Kenny Arita of Shanty Inn finished in a violent manner Thursday night with 789 scratch series but fell 12 pins shy of ripping Hidaka's mark. Arita has only 65 handicap.

Hidaka first, Arita second is the present reading on the men's singles ladder.

The tournament ends this Saturday, April 30.

Hepcats and Terminal placed first and second respectively in the team event of the women's division of the annual Main Bowl house handicap tournament last Thursday night in Main Bowl.

Closest Nisei girls' squad was third-place Stop 'n Shop. Other SNGBO (Seattle Nisei Girls' Bowling Organization) outfits in the event finished in this order: China Import & Export, Over the Top Beverage, Tokuda Drug, Martha's Beauty Shop and Takano Studio.

8 Nisei Nines To Play Sunday

Eight Nisei ball clubs — six in the Northwest Times league and one each in the City and Puget Sound circuits — will play this Sunday, May 1, in Seattle.

The Nisei Veterans of the fast City loop meet the Seattle Elks from 2 p.m. at Rainier, and the Western Giants of the Puget Sound league will take on the Port of Embarkation from 12 noon at Lower Woodland.

In the Northwest Times play, both Washington Wood and Vets will be out for their first win of the season when they face each other from 12 noon at Garfield No. 1. In the other two contests, Lotus tackles the Monarchs at Jefferson No. 1 and Fife tests the Savoy's at Georgetown, both games starting at 2 p.m.

Here's an announcement of interest to all World War II veterans:

The Army's enlisted reserve is expanding, and there are openings in all grades. If you served in the Army, Navy, Marines or Coast Guard, you can join the Army reserve.

For full particulars, contact any Army recruiting station.

The Enlisted Reserve Corps of the United States Army is now open to veterans of all the armed forces. Reserve members are paid for attending regular meetings. Promotions are wide open, and you can serve beside your combat buddies.

Get the facts from any Army recruiting station! Do it today!

MAIN DRUG CO.

Prescriptions Carefully Compounded
Phone MAIN 6647
522 Main St. Seattle 4, Wash.

We've Moved

The Store
Managed by Nobu Takahashi
From 414 Main St.
To 523 Jackson St.

Over the Top Beverage

Frank Russo, Prop.

NISEI FOTOSHOP

308-20th Ave.
"Complete Photographic Service"
Personal Representative

Tall's Fifth Avenue
1409 Fifth Ave.

GEORGE MORIHIRO

PR. 7927

Patronize Your Advertisers



Cosmopolitan Tavern

Any kind of
BEER and WINE
Prop.
Dick Matsuhira
M. Watanabe

102 14th Ave. EA. 9844

NOTICE

Change of Phone Number.
Now 2 lines for your convenience.

MA. 8874
OR
MA. 8875

NORTH COAST IMPORTING CO.

515 Maynard Ave. Seattle 4, Wash.
PO Box 3006 Seattle 14, Wash.

Use Your Telephone...



Call SENECA 5594 to advertise in THE NORTHWEST TIMES' classified advertisement section.

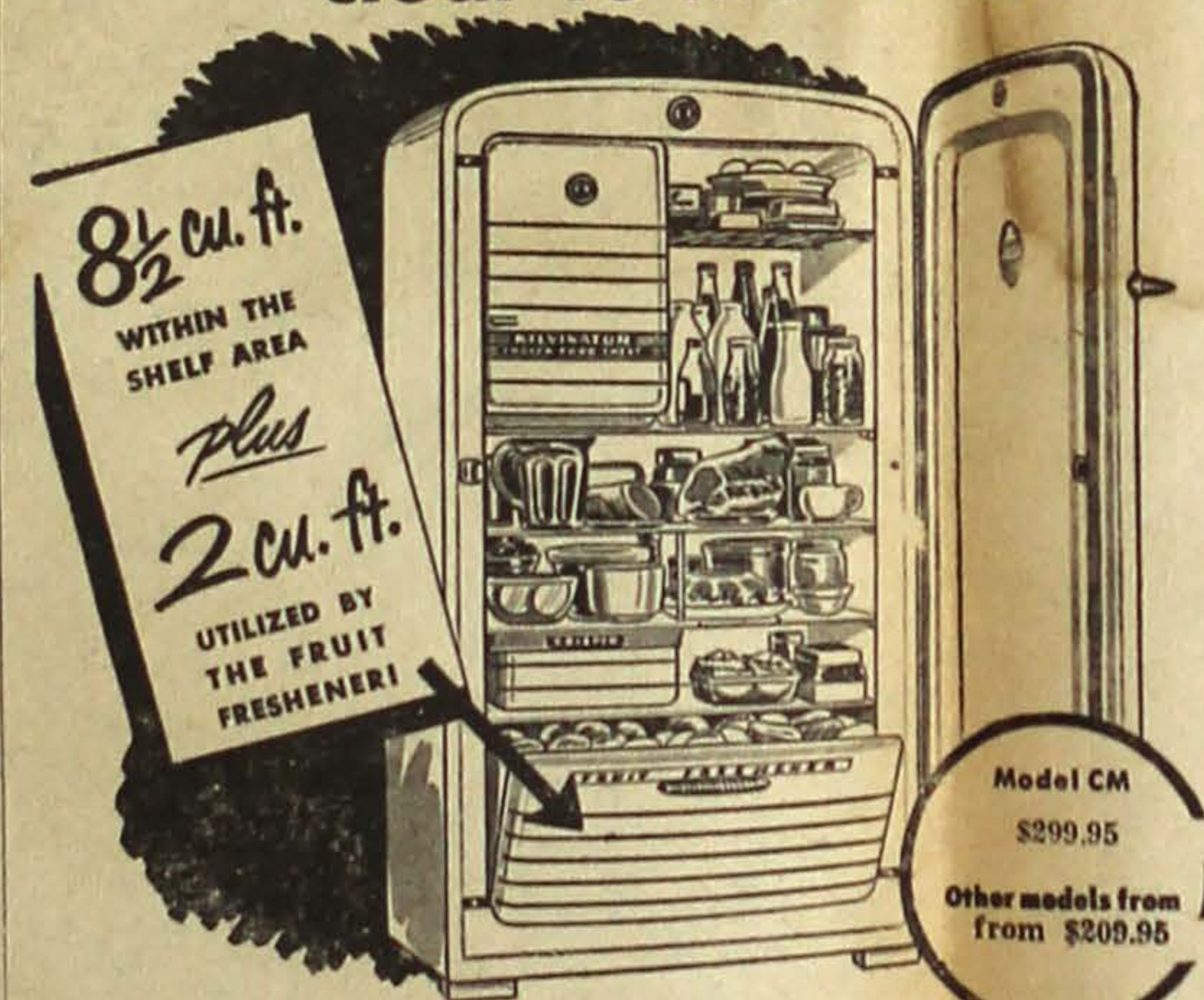
The cost is five cents per word insertion and the minimum charge is sixty cents.

THE NORTHWEST TIMES

304 Main St.

Seattle 4, Wash

YOU NEVER SAW SUCH ROOM! Kelvinator is cold clear to the floor!



*Prices shown are for delivery in your kitchen with 5-Year Protection Plan. State and local taxes extra. Prices and specifications subject to change without notice.

See the complete line!

- Frozen Food Chest holds up to 40 lbs. 4 big ice trays.
- Worlds of shelf space.
- Bonus cold space! Refrigerated Fruit Freshener keeps fruits and soft drinks taste-tingly cold!
- Powered by Kelvinator's Polarsphere... the thrifty cold-maker that's sealed-in-steel!

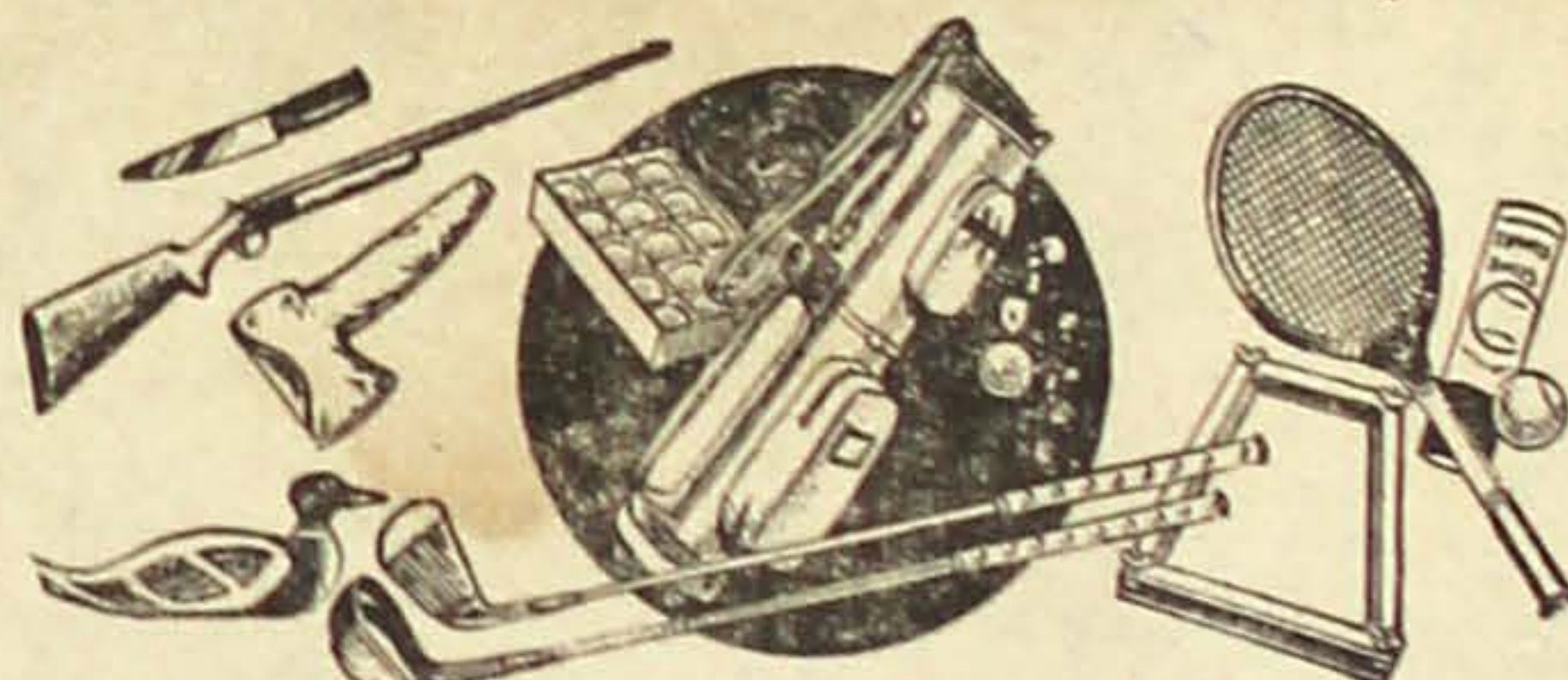
GET MORE... GET COLD CLEAR TO THE FLOOR! GET Kelvinator!

15 per cent down, 21 months to pay.

Momod's CROWN FURNITURE

Shig and Tak Momoda

308 14th Ave. So. CA. 9210

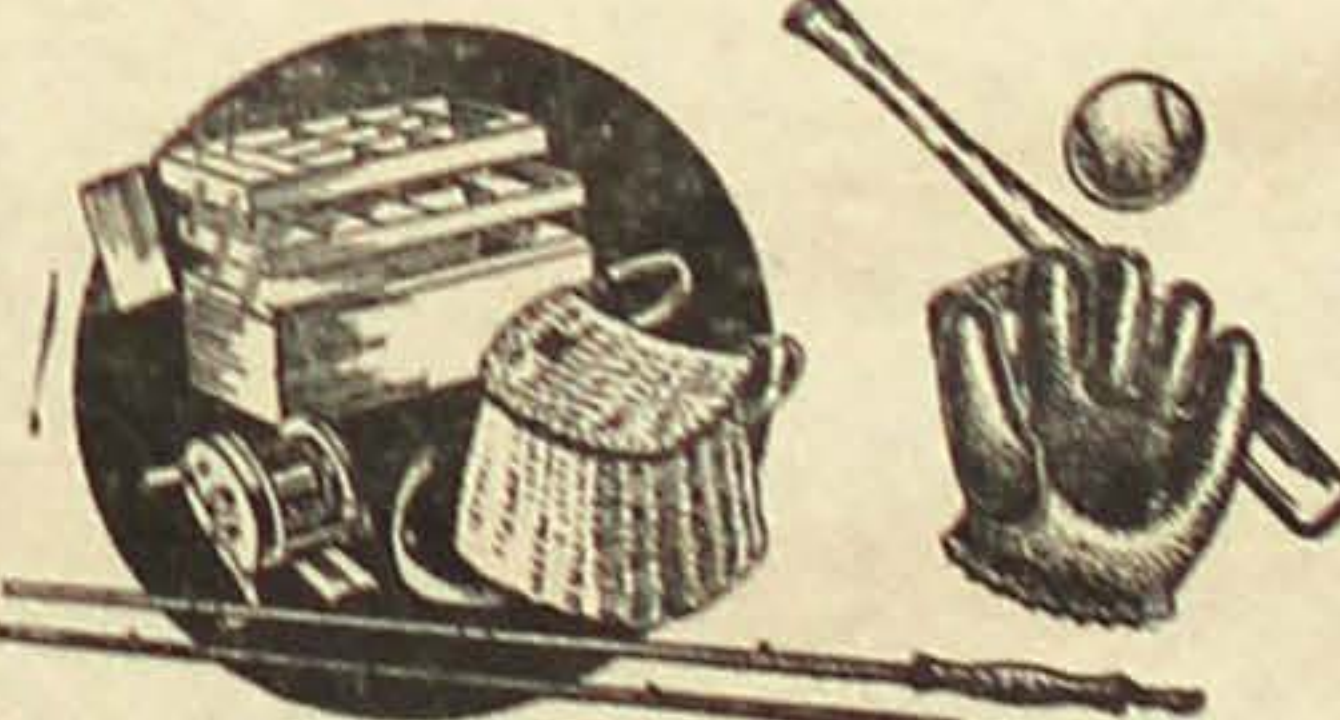


GOLF

- Bagboys
- MacGregor
- Wilson

TENNIS

- Famous TA Davis Frames
- Guaranteed No AWL Restraining
- Wilson Frames
- Special for April and May
\$6 gut for \$3.50
Nylon — \$2.75



FISHING

- Opening Specials
- Streams Open May 22
- Complete Fishing Information
- Lowland Lakes Open April 17

BASEBALL

- MacGregor Gold Smith
- Wilson
- Special Team Prices
- Baseball Sundries

MERCURY OUTBOARDS

- Super 5
- Super 10

Friendly HAB'S

Complete Sporting Goods

ELiot 7038

815 Jackson St.

NATCO WAR SURPLUS STORE

Need Working Clothes?

SAVE

SENECA 6976

NORTH AMERICAN TRADING CO.

SAVE

519 Jackson St.

The Social Whirl

BETROTHAL DISCLOSED

An informal tea was given on Sunday, April 24, in the home of Miss Mitze Ideta to announce her engagement to Mr. Daibo Fujii. Miss Ideta is the daughter of Mr. and Mrs. Kiyoshi Ideta, and Mr. Fujii is the son of Mr. and Mrs. Raisaku Fujii.

Guests present were the Misses Florence Watanabe, Kathryn Hashizume, Peggy Tanaka, Susie Shimizu, Yasuko Ota, Grayce Gojio, Kinko Fujii, Betty Kanda, Chiz Tamaye, Betty Takano, Yuki Arase, Mich Inouye, Sally Sakai, Yuri Kodama, Yuki Ideta, Shiz Tsuji and Lillian Hada.

'Unable to attend were the Misses Sachi Yasui, Hisa Matsubara, Naoko Anzai and Ai Kusakabe.

A home recording cleverly made to sound like a radio program announced the couple's betrothal.

Before their departure, each guest received from the hostess a favor of miniature gum drop holders.

BUDDHIST WEDDING

Miss Kay Iga, daughter of Mrs. M. Iga, was married to Mr. Frank Tsuji, son of Mrs. K. Tsuji, on Sunday, April 24, in the Seattle Buddhist temple with the Rev. T. Ichikawa officiating.

The bride wore a traditional white satin gown and carried a bouquet of white roses and white orchids.

Only attendant for the bride was her sister, Mrs. Ken Higashi, as matron of honor.

Best man was Mr. Hajime Hirata. Mr. Ted Higashi sang "Because" and "Always" accompanied on the piano by Miss Yasuko Ota.

After the ceremony, a reception was held in Gyokko-Ken Cafe.

Flower Lessons Begin May 4

All Lotus Senior Girls are urged to attend the first of a series of lessons on flower arranging to be held 7:30 p.m., Wednesday, May 4, in the Buddhist temple.

The classes will be taught by Mrs. W. Yokota, who announces that the first class will be a demonstration. A slight fee of thirty-five cents will be assessed.

Sightseeing Tour

The Japanese Newcomers' club went on a sightseeing tour Thursday (April 28), stopping at the Art Museum, the University, and other points of interest. Conducting the tour were Mrs. Paul Suzuki, 302 30th Ave.; Mrs. Bartow Fite, 231 40th Ave. N., and Mrs. Ai Chih Tsai, 305 17th Ave. S.

MAIN SHOKUDO TO REOPEN FOR BUSINESS SUNDAY

Main Shokudo at 505 Main St. will be re-opened for business this Sunday, May 1, it was announced today. The popular Japanese restaurant had been closed for the last two weeks for extensive remodeling.

Classified Ads

FOR LEASE: New store building suitable for cleaning & dyeing shop or beauty shop. Growing North-end district, 16' x 42'. Call DE. 5292 or EV. 2255.

WANTED

MEN OR WOMEN for Secretarial and Executive Job Good opportunity for young people

- Modern Office
- Modern Equipment
- Good Pay
- Apartment Available

AMERICAN CHICK SEXING ASS'N SCHOOL Established 1937

Department E. Lansdale, Penna. POSITIONS OPEN. Pleasant working conditions. Good starting salary. Apply in person. Must have willingness to work. Experience not necessary. Yuen Lui Studio, 419 7th Ave. So.

FOR SALE — Beauty parlor equipment at 204 Main St. Make offer. Call Frank Russo, SEneca 9233.

FOR SALE: Mt. Baker. Completely furnished. 4-bedroom, modern house. Double plumbing, double garage on large corner lot. 2819 Holgate St. Follow Mt. Baker bus to Holgate. EA 2963.

WANTED: A couple, woman to do general housework and man for gardening and general help. \$100 a month with room and board. Also has nineteen acres of land which can be cultivated for own use. Call MA. 9395 before 3 p.m.

Just among People

by gordon hirabayashi

SUGGESTS SPONSORING STUDENT

Apparently, Nisei collegians have common concerns. A packed house responded to the panel forum sponsored by JSC recently, and actively participated in the discussion. (In fact, the turnout was so unexpectedly large that Ed Horiuchi's refreshment committee was caught short-handed.)

Are Nisei students getting the maximum from their college experience? How active are they in campus affairs, and how important are these activities? What is the place of organizations such as Valeda and Syncoa (JSC)? These questions and more were aired by a panel consisting of Paul Seto, graduate in Law School; Violette Kosaka, U.W. YWCA; Glen Nygreen, Office of Student Affairs; and Dr. Jack Maki, Far Eastern Department. The able moderator for the evening was Bob Yamauchi, graduate in Medical School.

Many sound suggestions, as well as criticisms, were aired and I thought the atmosphere for the evening was encouragingly wholesome and socially healthful. I would like to try developing here one of the evening's suggestions for what is may be worth.

Nisei, and anyone else for that matter, must become concerned and participate in activities at least somewhat beyond purely self interests if they wish to remain an invigorating, stimulating group. There are few things that will more quickly degenerate enthusiasm and "spirit" than activities that are predominantly selfish. Significance of the existence of such a group diminishes, and prospective new members will find no incentive to join.

What about the idea of sponsoring, or helping to sponsor a foreign student on the campus? There are between 350 and 400 foreign students at the university this year. But there are no students from Japan, and there hasn't been any for years. It seems to me entirely proper, and indeed, potentially significant to help create the opportunity for some worthy student from Japan to attend the University of Washington.

Potential students from Japan will be under tremendous financial handicap if they were to come here. The cost would be prohibitive for most, and the exchange rate would cripple those who were able to come. So, in order to promote this idea, certain concrete needs must be met here, namely, tuition, room, and perhaps incidentals.

The Foundation for International Understanding Through Students

(James Davis, director) has several tuition scholarships available for qualified foreign students. If one of these could be secured for a student from Japan, the tuition part of the expense could be met. (Tuition for foreign students is twice that for residents, or \$92.50 per quarter, so it amounts to a considerable annual scholarship.)

What about room and board? One possibility is to make arrangement for the student to live at the JSC house (providing it is a male student). But the expenses for the room and board should be met by all Nisei students. Perhaps, even the "Japanese Community" may feel like participating. And it is not inconceivable that non-Japanese may wish to support such a project.

If such a project gains support, it should be arranged as an outright scholarship with no strings attached. It could even be set up as some kind of a memorial scholarship in honor of one or many Nisei veterans who were Washington students. I think it would be appropriate and fitting if a group of ex G.I. students would take the leadership on this type of project, and set the stage for some student from Japan.

This is not an original idea, and there is already an internationally known precedent. Today, at Lafayette College in New Jersey, Robert Nishiyama, ex-Kamikaze pilot, is a freshman as a result of an unique will left by a young G. I. from Eastern U. S. who was killed in action in the Orient.

The above suggestions have been aired essentially for these reasons:

1. This is a potentially worthwhile project with international repercussion;
2. This is definitely outside the scope of purely selfish activity;
3. This could serve as a good rallying activity for cooperative action between the "Japanese Community" and the students.

This is merely one idea of something that could be done. And it is largely in the idea stage yet; much thought and detailed planning will be needed before even this one idea can be actuated. There are a lot of other worthwhile ideas that could be worked out. The important thing is to decide on one or two ideas and begin working them out. Ideas must get out of the talking stage if something is to be done.

You can serve with the Army reserves, if you're a veteran of World War II! Get the details from your nearest Army and Air Force recruiting station!

Child Clinic Hours Changed

Instead of in the morning, the Child Health Clinic at Neighborhood House, 304 18th Avenue South, will be at 1 p.m. on Wednesday, announced Dr. John R. Wilkey of the Seattle-King County Health Department.

A physician and a public health nurse, assisted by volunteers who live in the area, are always in attendance at the clinic.

Veterans! Serve with the Army reserves! Earn a commission in your spare time! Get the particulars from any Army recruiting station!

Real Estate

ROOSEVELT DISTRICT

Three bedrooms, living room with tile fireplace, large dining room. Kitchen with breakfast nook. Venetian blinds. Hardwood floors. Full basement with oil furnace. New hot water heater. Garage. Well landscaped. This house is close to Roosevelt High School and university. Transportation very close. Price \$11,000 and terms.

BEACON HILL

Corner brick. Two bedrooms, living room with fireplace. Dining room, kitchen with tile features. Hardwood floors. Full basement, oil furnace, garage. Very nice backyard with fish pool. House in newer Beacon Hill district. Low price \$11,500 and FHA terms.

International Realty

James M. Matsuoka

659 Jackson St. MA. 1522
Seattle 4, Wash.

THE NISEI CALENDAR

May

1—Old Timers' semi-formal get-together dance to be sponsored by Lotus Shoyukai from 9 p.m. to 12 midnight in Buddhist auditorium. Invitational. Frankie Roth and his orchestra will play.

1—JSC to sponsor its annual bazaar from 11 a.m. in Washington Hall with a dance to be held in the evening.

5—JACL general membership meeting and election in Buddhist temple from 8 p.m.

7—Bellami's anniversary dance from 8 p.m. to 12 midnight in Buddhist auditorium in honor of former members. Open to the public, it will be a tolo affair.

14—St. Peter's Mission will sponsor a bazaar in its hall from 10 a.m. to 10 p.m.

15—JSC will sponsor a couples only sports dance in Palladium ballroom. Frankie Roth's orchestra will furnish the music. Dancing hours will be from 9 p.m. to 12 midnight.

27—Teen-age talent show, tentatively set by Girl Scout Troop 411.

in Seattle Buddhist auditorium.
28—Valeda to present spring tolo dance. Semi-formal.
29—Skating party sponsored by Risseho YBA at Rollerland Skating Rink from 10:30 p.m. to 12 midnight.

June

26—Annual picnic sponsored by N.V.C. at Foss' Shadow Lake from morning till 11 p.m.

Main Street Service
OAS OIL AUTO REPAIR
24th & Main St.
EAST 9111

A Nisei Rendezvous

Chuck's
Ice Creamery
625 Jackson St. EL. 9136

OLYMPIC NATIONAL LIFE INSURANCE COMPANY

- Life
- Accident-Health
- Family Hospital Expense Plan

GEORGE Y. MAMIYA
319 19th Ave. Res. EA. 0937
Special Representative

IKEDA & CO.

WHOLESALE GROCERS

SEneca 2196
600 6th Ave. S.
Seattle 4, Wash.

You will be surprised at the low cost of Mortgage life insurance
Protect your home!
Inquire from
STANLEY Y. KARIKOMI
District Agent
The Manufacturers Life Insurance Co.
531-6 Skinner Bldg. Telephone EL. 3993
Seattle 1, Wash. Residence CA. 8602



Now going on! Come in! See it!

BIG SPRING SHOWING

FRIGIDAIRE HOME APPLIANCES

See our big Spring Showing of Frigidaire Home Appliances. See all the modern conveniences and features you get in America's "First Family" of kitchen and laundry appliances.

Learn about these FRIGIDAIRE appliances

- Refrigerators • Electric Ranges • Automatic Washer
- Electric Water Heaters • Electric Clothes Dryer
- Electric Ironer • Home Freezers • Electric Dehumidifier
- Kitchen Cabinets and Sinks

319.75 299.75 259.75

Deluxe, 9 cu. ft. Frigidaire Refrigerator

Automatic Washer with Live-water Action

Frigidaire De Luxe Electric Range

Full-width Super-Freezer Chest — Full-width, glass-topped Hydrator, — famous Meter-Miser mechanism, — many other exclusive advantages.

Only Frigidaire has Live-Water action. Washes clothes cleaner, rinses them twice in clean, clear water! All-porcelain inside and out.

All-porcelain — Cook-Master Oven Clock Control — Even-Heat Oven — Triple-Duty Thermizer and many other features you should see.

FREE!

Frigidaire "Jiffy-Measure"

Come in! See a Frigidaire demonstration, and get a handy 1/2, 1, 2, 4, 8 oz. JIFFY MEASURE. It's marked in pints, cups, tablespoons and ounces — a most convenient kitchen gadget. It's FREE during the Frigidaire Spring Showing.

Other Models (Standard)

Range	184.75
Refrigerator	209.75

HIKIDA FURNITURE CO.

818-20 Jackson St.

ELiot 2935

Res. FRanklin 4755

TOKUDA DRUG

1724 Yesler GEORGE TOKUDA, Prop. CA. 3611
Prescriptions carefully compounded by
REGISTERED PHARMACISTS

"Favorite Nisei Fountain"
SERVING FAMOUS WELCOME GUEST ICE CREAM
DRUGS MAGAZINES GREETING CARDS
SUNDRIES

Patronize Your Advertisers