

Ever Since Eve

By r. y.

When the good old summertime rolls around, we all look longingly at maps, resort folders, and various guides; then sorrowfully turn our pocketbooks inside out to see how far our diminishing dollars and cents would take us. This summer, girls, let's see America first, or better still, let's explore this wonderful and enchanting state of Washington and its immediate vicinity. You'd be surprised at the number of different and interesting places at your disposal, practically in your own back-yard.

First of all, we'll begin with the Olympic Peninsula, oftentimes called "America's Last Great Frontier". It is located in the extreme upper left hand corner of the United States. Some areas of this scenic paradise have never been reached by the white man while the wilderness in other parts stops many from attempting to exploit. Of course, though, you and I would only be interested in the places easily accessible by either automobile or boat. If you are traveling by car, you can take the road around via Olympia, to the Hood Canal. Such cities as Bremerton, Port Townsend, Port Angeles, Hoquiam, and Aberdeen are located on the highway that encircles the Peninsula. Other attractions such as Lake Cushman, Lake Sutherland, Lake Crescent, Ocean Beach, Deer Park and the Indian Reservation are on this "loop" trip. For you fishing enthusiasts, there are plenty of fresh water, stream and lake fishing, surf-fishing and also salmon fishing, besides countless other activities. There's swimming, sail-boating, clam-digging, horseback riding and hiking to make your vacation enjoyable. As you sit back in your car, you can drink in breath-taking sights of massive snow-capped mountain peaks, miles and miles of our tempestuous Pacific Ocean, lovely mountain lakes and streams. Occasionally, perhaps, you might like to get out of the car to follow some mysterious trail, opening into hidden lakes and valleys.

Now let us leave the Peninsula and take a boat from Seattle to Victoria, B. C. The trip up to Canada is chock full of luxurious living and can be relaxing to taut city nerves. Located on the shores of Juno de Fuca Straits at the southern tip of Vancouver Island, Victoria is Canada's most westerly province. People here live serenely and visitors will soon fall in step with their leisurely way of life. There are many places of unique interest to feast your eyes upon — shops featuring rare linens, woolsens and china, Bea-

(Continued on Page Four)

The Northwest Times

The Only All-English Nisei Newspaper in The Pacific Northwest

U. S. POSTAGE
Sec. 562, P. L. & R.
PAID
Seattle, Washington
Permit No. 5164

VOLUME 3, NUMBER 48

Seattle 4, Washington

WEDNESDAY, June 15, 1949

LOCAL CHAMBER TO HEAR DATA ON YARDVILLE

First official announcement of Seattle's role in "International Yardville, U.S.A." will be made at noon this Friday, June 17, at the Members' Council Luncheon of the Seattle Chamber of Commerce in the main dining hall, fourth floor of the C. of C. building.

"International Yardville, U.S.A." is part of McCall's Magazine's "Yardville, U.S.A." project for civic improvement.

A section of the Jackson street community has been chosen for the initiation of this campaign in Seattle. Mrs. Ruth Manca, executive secretary of the Jackson Street Community Council, has worked with McCall's Magazine and the Construction and Civic Development Division of the Seattle Chamber of Commerce in arranging this program, as well as the over-all project, according to Catherine Flagler, chairman of the program committee, "International Yardville, U.S.A." luncheon.

Principal speaker on the program will be Mrs. Mary Davis Gillies, Interiors and Architecture Editor of McCall's Magazine. A former Seattle woman and one of the originators of the "Yardville, U.S.A." idea, she will describe how this project has been developed in other communities. In addition to Mrs. Gillies' talk, Councilwoman Frances F. Powell will speak on her experiences during her recent trip to Europe.

FORTY-SIX FISHERMEN VANCOUVER, B. C., June 15 — Forty-six Japanese fishermen have taken out commercial fishing licenses to fish in B. C. coastal waters, according to a recent report here.

The Mailbag

Dear editor:
We wish to take this means to express our appreciation for your cooperation with our recent Fiftieth Anniversary week. The publicity so generously given by you contributed immeasurably to the success of our celebration.

Sincerely yours,
Japanese Baptist Church Anniversary Committee
Robert M. Koba, chairman

Methodists Book 50th Meet Here

Fiftieth annual conference of the Pacific Japanese Methodist churches will open next Wednesday, June 22, and last until Monday, June 27, in the Seattle Japanese Methodist church.

The six-day parley will be presided this year by Bishop Donald H. Tipper of the California area who will be assisted by Superintendent Channing A. Richardson.

The ordination service and the reading of appointments will be the highlights on Sunday, June 26. Bishop Tipper will officiate at the ordination of young men who have prepared themselves to become ministers in the Methodist church, and he will also read the appointments of the ministers to the various local churches.

2 from Seattle Earn Degrees

MILWAUKEE, Wis., June 15 — Three Nisei, two from Seattle, received their degrees from Marquette University at its commencement exercises last June 11 in the Milwaukee auditorium.

They were Harry Tsuneo Hidaka, Mary Taeko Tsuda, and Michinori Richard Inouye. Hidaka, doctor of medicine, and Miss Tsuda, bachelor of philosophy, are from Seattle.

OK's 3 Bills

WASHINGTON, D. C., June 15 — The House has passed three private bills to admit four persons of Japanese ancestry, the JAACL ADC said today.

Two of the four, Christine Kono, of Dutch-Japanese ancestry, and Sadae Aoki, are fiancées of GI veterans. The other two, Teiko and Yoshiko Harkawa, are minor twin stepdaughters of a veteran who married a Japanese national.

SEATTLE ADC FUND DRIVE REPORT

Setsuburo Uno	\$5.00
Anonymous	3.00
Neighborhood House	5.00
(Arthur Solomon Jr.)	
	\$13.00

4-L, CHURCH WILL HONOR PREP GRADS

WAPATO, Wash., June 15 — Yakima Valley Nisei who have currently completed their high school, college, or trade and professional training will be honored at a banquet and dance at 6 p.m., this Saturday, June 18, at the Buddhist Kaikan in Wapato. Co-sponsored by the Four-L Club and the Wapato Methodist Church, the banquet will feature a guest speaker, talks, and entertainment with dancing to follow. Mas Wada will be master of ceremony.

The graduates to be honored are: Meri Wada, Denzo Shirota, Gilbert Inaba, Ken Segara, Jim Sakamoto, Mas Umamoto, Wapato high school; Marian Watsnabe, University of Idaho; Martha Kawachi, R. N., St. Elizabeth School of Nursing, Yakima; Bob Konishi, Perry Institute, Yakima; Fred Ono, Sparten Aeronautical School, Oklahoma; and George Matsumura, a trade school in Portland, Oregon.

Making arrangements for the affair are the following committee chairmen: Finance and tickets — Sam Nakano and Sam Sakamoto; Food — Tosh Umamoto; Service — Sayuki Matsui and George Matsumura; Invitations — Fumi Iseri; Music — Chuck Matsui; Decorations — Janice Shirota; Gifts — Tak Kondo; Clean-up — Ken Inaba; and Program — Kara Kohdo.

Japanese May Attend U. M.

MINNEAPOLIS, Minn., June 15 — The wartime friendship of a young Japanese student and a Minneapolis boy may bring the Japanese to the University of Minnesota to study, according to the May issue of Min-nisei, Twin Cities UCL (JAACL) monthly paper.

During the war, Lowell Norrbom befriended Iwao Iwasaki in Tokyo. The young American took great interest in Japanese culture and language — Iwao made it live for him.

Young Norrbom, back in the States, but still nursing a strong desire to return to Tokyo, was killed in a tragic auto accident early this year. Now, Iwao has written the Norrboms asking help in getting permission to come to this country to study.

Although Iwao would qualify for a scholarship in mining engineering at the Colorado School of Mines, Mrs. Norrbom, Lowell's mother, would rather see him in Minneapolis where her family can extend the ready hand of friendship and hospitality.

The Rev. Daisuke Kitagawa has consulted the foreign student council at the University of Minnesota and obtained application blanks which have been sent to young Iwasaki.

Mr. and Mrs. Norrbom, with nine children still living, are anxiously awaiting news as to whether they will meet their oldest son's Japanese friend.

Nisei, 15, Fills Role of 'Yum-Yum' In Novikoff Ballet Presentation

The Novikoff School of Russian American Ballet will present its annual ballet recital in celebration of its 25th anniversary at 8:30 p.m. next Friday, June 18, in the Masonic Temple, Harvard and E. Pine.

Of particular interest will be sketches from previous, successful ballets which Ivan Novikoff, choreographer, has presented during his twenty-five years in this country. Included will be the Japanese Ballet, danced to the music from the popular operetta, "Mikado", the Rose Ballet with music by Weber, Les Sylphides, and Russian and Hungarian character dances.

The scene for the Japanese Fantasy will be:
"In the town of Titipu, the Japanese boys and maidens are

celebrating the arrival of Nanki-Poo who is meeting secretly with Yum-Yum. Everyone joins in the gaily and betrothal of the two lovers."

Jean Matsumura, a 15-year-old Nisei, will fill the role of "Yum-Yum" in the Cherry Blossom Dance. Others in the feature spots are Ivan Novikoff as "Nanki-Poo" and Elizabeth Bohlken as "Pitti-Sing".

Tickets for this silver anniversary presentation may be obtained at the Novikoff Studio, 1318 Second Ave.

Nisei Receives ROTC Rating

Tokiyuki Aoki, a graduating senior, was among 124 ROTC (Reserve Officer Training Corps) students who received reserve or regular commissions during commencement exercises last Saturday at the University of Washington. He was listed as receiving commission as a second lieutenant.

Classified Ads

WANTED: Grocery clerk. SE. 9389

WANTED: Part-time girl or employed couple to answer telephone, help out in doctor's lakeshore home. All automatic. Private apt., board and compensation. RA. 2768.

LESCHI VIEW DUPLEX

Older, well-planned and expensively constructed house with five large rooms on 1st. Six and enclosed sunporch on 2nd floor. Separate basement and heating plant. New roof. Fruit trees. A steal at \$10,000. \$3,000 down. No financing. Call Bruno Owen, MI. 5324.

A map does not exhibit a more distinct view of the situation and boundaries of every country, than its news does a picture of the genius and morals of its inhabitants. —Goldsmith.

Patronize Your Advertisers In The Northwest Times.

YESLER WAY AUTO SERVICE

- | | |
|-------------------------------|-----------|
| BEN FUKUTOMI | JACK KUDO |
| ● Complete Automotive Service | |
| ● Headlight Adjustment | |
| ● Complete Brake Service | |

CA. 9841

17th and Yesler Way

FIVE NISEI STUDENTS RECEIVE BACCALAUREATE HONORS AT U. W. GRADUATION CEREMONY

Five Nisei students earned baccalaureate honors at the University of Washington's graduation exercises held last Saturday afternoon in the University's Edmundson Pavilion.

They are Calvin Ninomiya, John H. Sato, Haruto Sekijima, Henry S. Tamada and Theodore Taniguchi. All of them won "cum laude" distinction which is a grade point of 3.35. In computing honors, an A carries four points, B three, C two and D one. "Summa cum laude" signifies a minimum grade point of 3.9 and "magna cum laude" 3.6.

Nisei who graduated are:

- College of Arts and Sciences
BACHELOR OF ARTS
James A. Hirabayashi, Yukio Imada, Katherine S. Matsuda, Ethel S. Taniguchi, Virginia S. Ondo, Tokiko Senda.
- BACHELOR OF SCIENCE**
Victor M. Takemoto, Kazuko Sa-

College of Education
BACHELOR OF ARTS
Benjamin Yorita.

College of Pharmacy
BACHELOR OF SCIENCE IN PHARMACY
Sadako Nakashima, Takeo K. Shimizu.

College of Business Administration
BACHELOR OF ARTS IN ECONOMICS & BUSINESS
Tokuyuki Aoki, George Y. Ma-miya, Jack Y. Murakami, Zenji Shibayama, Iwao Kawakami, Masao Watanabe.

School of Nursing
BACHELOR OF SCIENCE IN NURSING
Margaret M. Baba. (Also certificate in public health nursing).

ADVANCED DEGREE
Doctor of Philosophy
Douglas S. Yamamura.

Economy-Minded Solons Pass Over Funds Set Aside for Claims

WASHINGTON, D. C., June 15 — Although an economy-minded Senate has trimmed approximately \$12,000,000 from an appropriation for the Justice, Commerce and State Departments and Judiciary branch of the government, no funds were cut from the \$1,200,000 fund allocated to the Justice Department for payment of evacuation

claims. The Senate version of the appropriation measure must go to a conference between the House and Senate for an adjustment of differences in the bill passed by the two bodies. This will delay the bill's final passage, but should have no material effect on evacuation claims, the JAACL ADC has been advised.

House OK's ENI Legislation; Senate Unit Will Study It

WASHINGTON, D. C., June 15 — The JAACL ADC was informed the A bill, (H. J. Res. 238) to give full citizenship privileges to all persons without respect to race, passed by the House, is now in the Senate.

The Senate Judiciary Committee, headed by Sen. Pat McCarran, (D., Nev.), for consideration.

Open Alleys at All Times.



MAIN BOWL

306 Main St.

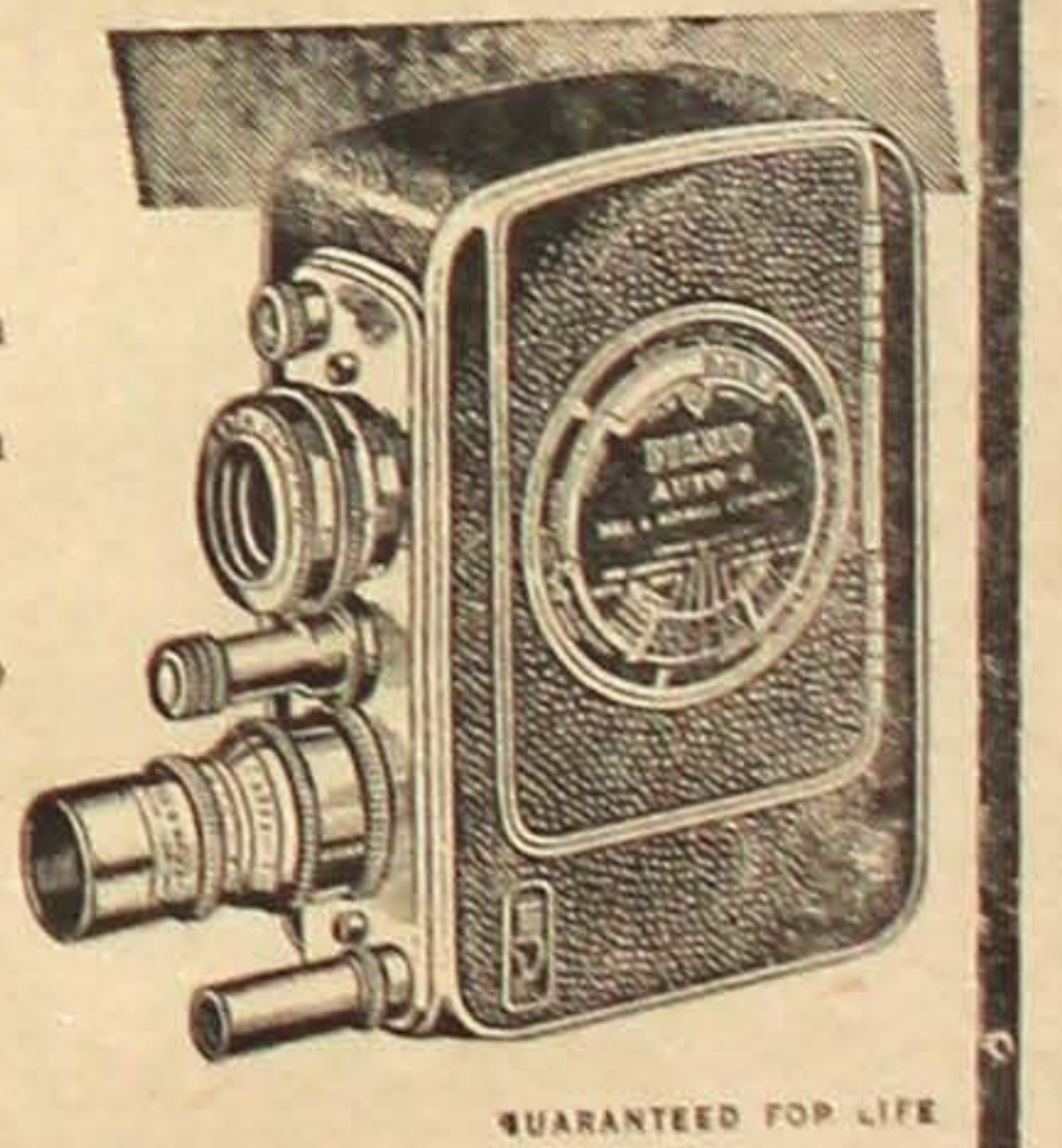
MA. 9399

New MAGAZINE-LOADING 8mm MOVIE CAMERA by Bell & Howell

- Swift-turn two-lens turret on which matched finders turn with lenses — what you see, you get.
- We have the most complete photo department in the South district.

W. Nakamura Co.

664 Jackson Phone SE. 4716



Use Your Telephone...



Call SENECA 5594 to advertise in THE NORTHWEST TIMES' classified advertisement section.

The cost is five cents per word insertion and the minimum charge is sixty cents.

THE NORTHWEST TIMES

304 Main St.

Seattle 4, Wash.



Part of the School-Trained American Chick Sexing Association Staff

LEARN CHICK SEXING

HIGH PAYING

Jobs Guaranteed to all Graduates

AMERICA'S:

LARGEST MOST RELIABLE

CHICK SEXING SCHOOL

- Learn under the G. I. Bill of Rights.
- Earn from \$6.00 to \$12.00 an hour.
- Our Graduates are Located throughout this Country as well as in Latin America, Europe, and Hawaii.
- Only School in America Operating Every Year since 1937.
- Applications Now Being Accepted. Enrollment Limited. Write TODAY for Full Particulars.

AMERICAN CHICK SEXING ASS'N SCHOOL

S. JOHN NITTA, PRESIDENT

HOME OFFICE: DEPT. E., LANSDALE, PENNSYLVANIA

The Northwest Times

THE ONLY ALL-ENGLISH NISEI NEWSPAPER
IN THE PACIFIC NORTHWEST
Established January 1, 1947

Published every Wednesday and Saturday of each week.
Editorial offices at 304 Main St., Seattle 4, Wash. Phone
SEneca 5594. Office hours: 9 a.m. to 6 p.m. daily except
Sundays and holidays.

Editor & Publisher Budd Fukui
Associate Editor Hideo Hoshide
Art Editor Tom Tsutakawa

SPECIAL REPRESENTATIVES

TACOMA—Kimi Fujimoto
1710 Fawcett Ave., Tacoma Wn.
PUYALLUP—Mrs. Arthur Yamada
P. O. Box 117, Milton, Wash.
PORTLAND—Tom Okazaki
7404 N. Denver, Portland, Oreg.

WAPATO—Mrs. Kara Kondo
P. O. Box 816, Wapato, Wash.
ONTARIO—Mrs. James Watanabe
Rt. 1, Payette, Idaho
SPOKANE—Blanche Shiosaki
Box 6058, Spokane 14, Wash.
Bus. GL. 1548 Res. GL. 7197

Subscription Rates Classified Ads
One month \$.75
Six months 4.25
One year 8.00
Minimum charge 60 cents
Per word insertion 5 cents



COMING EVENTS

We beg to remind all Nisei vets once again of two NVC-sponsored events which will highlight the closing days of the glorious month of June. Write them on your thumb-nail or on the wall calendar if you have to, because these are two dates which you won't want to forget.

First in point of time is the big "beer bust" which Chairman Dick Setsuda has been planning for quite a while back. This get-together, which will include delicious refreshments and a capacity load of beer for each and every man, will be absolutely free, gratis and for-nothing; your NVC membership card will be your admittance ticket. The date is Friday evening, June 24; the place, Sick's Brewery (on Airport Way).

On the Sunday following, June 26, the NVC will hold its annual picnic. By now, the NVC picnic has become a big traditional event for the entire community, since it's open to the public and there's a lot of fun for everybody in an affair of this kind. This year's picnic, which is under the direction of Recreation Chairman Kai Matsushita, will be held at Foss' Shadow Lake, which was the site of the 1947 picnic. Kai is lining up a full schedule of races and other "athletic" events to go with the usual boating, baseball, and evening dance program.

Look at it this way — where else can you have so much fun for so little damage to the old pocketbook? Take our tip, and you won't miss either of these two events.

VETS DROP CLOSE ONES

Earlier this season, both the Portland Beavers and the St. Louis Browns were dropping ball games, anywhere up to eleven in a row, just as though there was a law against winning. The Nisei Vets are now probably aware of how the Beavers and the Browns felt, with their own losing streak in the City League now extended to eight full games.

The sad news in brief: in last Friday's make-up game with the Seattle Elks, the Vets lost, 9-3, after spotting the opponents six

monumental tallies in the first frame. In Sunday's game, the Vets succumbed 6-4 to Gibson's, with the winning margin provided by a four-run outburst by the carpet cleaners in the seventh inning.

However, all is not gloom in the Nisei camp. After all, they're playing pretty fair ball in the fastest semipro league in town, and all their recent losses have been close ones. Better days have already come for the Beavers and the Browns, and perhaps the same thing will happen for the Vets.

This Friday, the Vets travel to Bellingham for a night game. Next Sunday the Vets will entertain the Italian club from 12 noon at Rainier.

SHORTS

Harry Kataoka, who was married last Sunday to the former Rose Osawa, was "honored" with a stag party on the preceding Friday evening. A good time was had by all — of course. After waiting two years, Howard Minato is very happy to be driving his new Chevrolet. Things We Didn't Know Until Now Department: Lt. Col. Sherwood Dixon, formerly commander of the Third Battalion, 442nd Infantry, during Camp Shelby days, is now Lieutenant-Governor of the State of Illinois. When Colonel Hanley was here for the Memorial Day ceremonies, we were struck by his uncanny resemblance to Otto Krueger, the movie actor.

Co-op Radio
Home & Car Radio Service
Free pickup and delivery
Shig Akada
1437 Jackson CA. 2125

PAUL S. KASHINO
New York Life Ins. Co.
Insurance Bldg.
2nd & Madison
Res. EA. 2508 Bus. EL. 0609

We sell all kinds of beer,
champagne and mixers.
JACKSON
BEVERAGE
Jackson St. Seattle
Call EL. 1555 for delivery

Central Cleaners
PICKUP & DELIVER
918 Pine St. SE. 0318
Frank Fukano

Lotus YBA Set For Picnic

All persons who wish a ride to the Lotus YBA picnic at Heiser's Shadow Lake on Sunday, June 19, are asked to contact some member in Lotus. A chartered bus will leave from the Buddhist temple, 1427 Main St., at 10 and 11 a.m., Sunday morning. The time of departure from the lake will depend on the demand at that time.

Games, boating, swimming and dancing are scheduled for the day. Booster tickets are being sold by Lotus members.

SUSUMI-
BUTTERWORTH
FUNERAL SERVICE
300 East Pine EL. 0558
After 6 p.m., call
MA. 0949

TORU SAKAHARA
Insurance-At-Law
INSURANCE
318-6th Ave. S. SE. 3220
Seattle 4, Wash.

Patronize Your Advertisers

Come to Church

Every church is requested to send in its notices by Tuesday noon of each week so that the changes may be made accordingly and in time for the Wednesday editions of that week.

BAPTIST
9:45 a.m.—Sunday School in nursery school building.
10 a.m.—Issei worship service.
11:15 a.m.—Nisei worship service.
11:15 a.m.—Nursery during Young People service in the Broadway nursery building.
7:30 p.m.—BYF.
Okazaki class from 8 to 9 p.m. on Tuesdays at Fujin Home.

METHODIST
SUNDAY, June 19
10 a.m.—Sunday School.
10 a.m.—Junior worship service led by Grace Ozawa's class.
10 a.m.—Issei service.
11 a.m.—Nisei worship service.
The Rev. Thomas J. Machida, pastor, to speak.

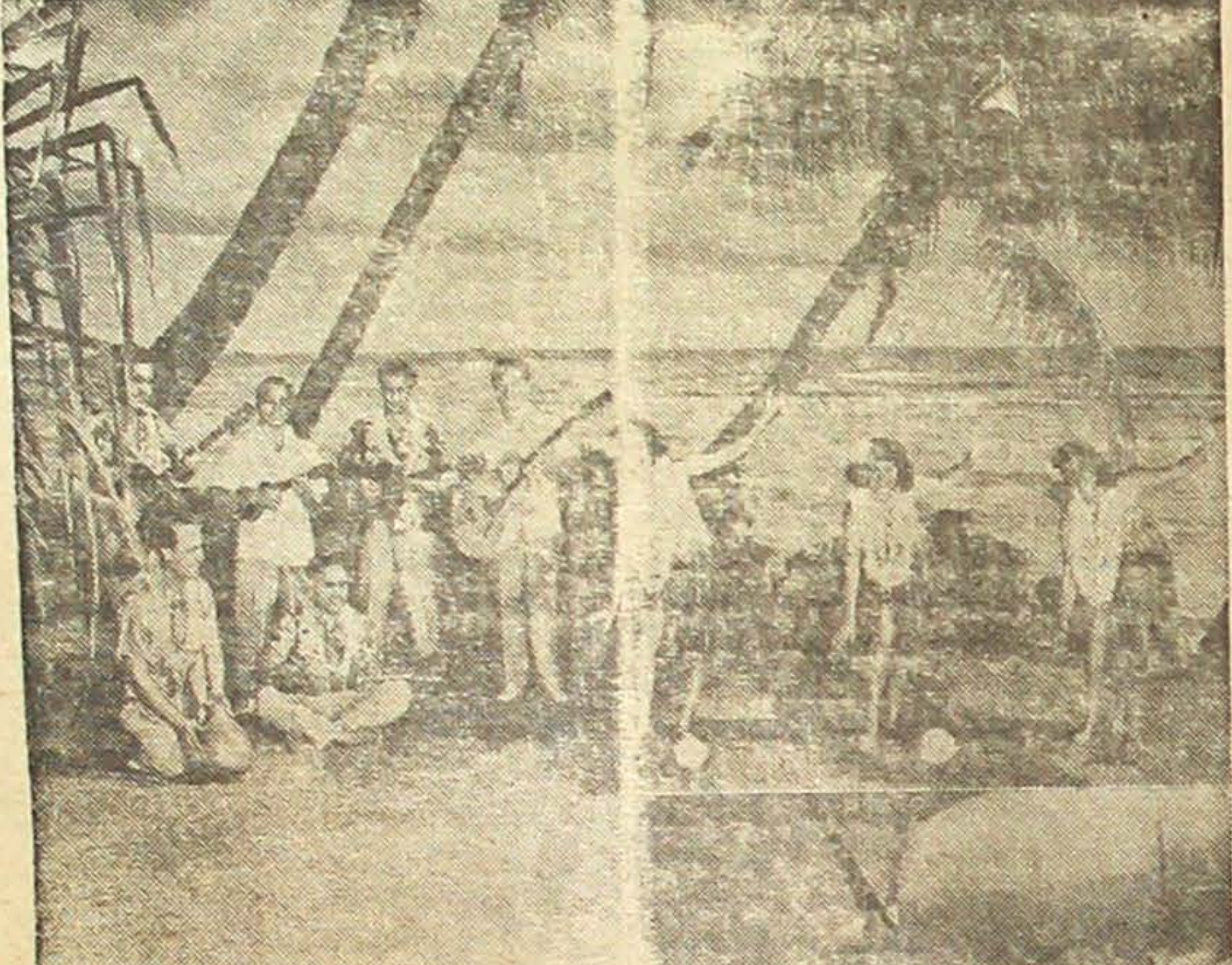
MARYKNOLL
9 a.m. and 10:30 a.m.—Low Mass. Benediction will be held following 10:30 Mass.

NICHIREN BUDDHIST CHURCH
10 a.m.—Kindergarten children and juniors service.
11 a.m.—Young people's service in English.
2 p.m.—Japanese Service

PRESBYTERIAN
9:45 a.m.—Sunday School for all ages.
10:00 a.m.—Issei Worship Service.
11:10 a.m.—Nisei Worship Service.
Rev. Hirata to speak on "Thou Art the Man".
Nursery for children whose parent attends church.
7:00 p.m.—Westminster Fellowship.

ST. PETER'S
9 a.m.—Issei Holy Communion.
Rev. G. Shoji.
9:45 a.m.—Sunday School, Miss Gladys Gray.
11 a.m.—Nisei Worship Service.
7:30 p.m.—Fri-night YPF meetings.

TRAVEL CUES... HAWAII



Hawaiian musicians, singers and dancers are a common sight on beaches (above). Pan American stratosphere-type Clippers (right) that fly from mainland to Hawaii in 10 hours. They have berths for 18 people, lower deck for cocktails and reclining seats for additional 25 passengers.

Hawaii — great arsenal of the Pacific during the war — is again top choice of travelers who desire leisure amidst tropic beauty. Accessibility of these jewel-like islands — only 2400 miles from America's West Coast — is an important factor in the rebirth of Hawaii as a magnet for international society. The 2400 miles are only ten hours on one of Pan American World Airway's giant stratosphere-type Clippers. With Honolulu the aerial crossroads of the Pacific, the cocktail lounges of the Royal Hawaiian, the Halekalanani and the other hotels which fringe Waikiki Beach are becoming gathering places for international wayfarers. Souvenir stores sell grass skirts and ukuleles; smart shops feature exclusive beach and sports wear, Oriental objects d'art, beautiful koawood bowls and exquisite lauhala mats. Honolulu's gay atmosphere after dark has a charm all its own — not only at the big hotels, but in the small restaurants and tea houses where visitors feast on exotic Japanese, Chinese and Hawaiian dishes. In addition to surf sports; yachting, deep sea fishing, horseback riding and motoring round out Hawaii's attractions to both young and old pleasure seekers.

KANNO CO.
EDDIE KANNO
Repairing Servicing
● Radio
● Washing Machines
● Electrical Appliances
Main 2160 606 Main St.

Martha's Beauty Shop
MARTHA IKEDA
124 13th Ave.
Shop—EAsT 6660

William Y. Minbu
ATTORNEY & COUNSELOR
110 Jackson Bldg.
Phone MAin 2519
Res. PRospect 2306

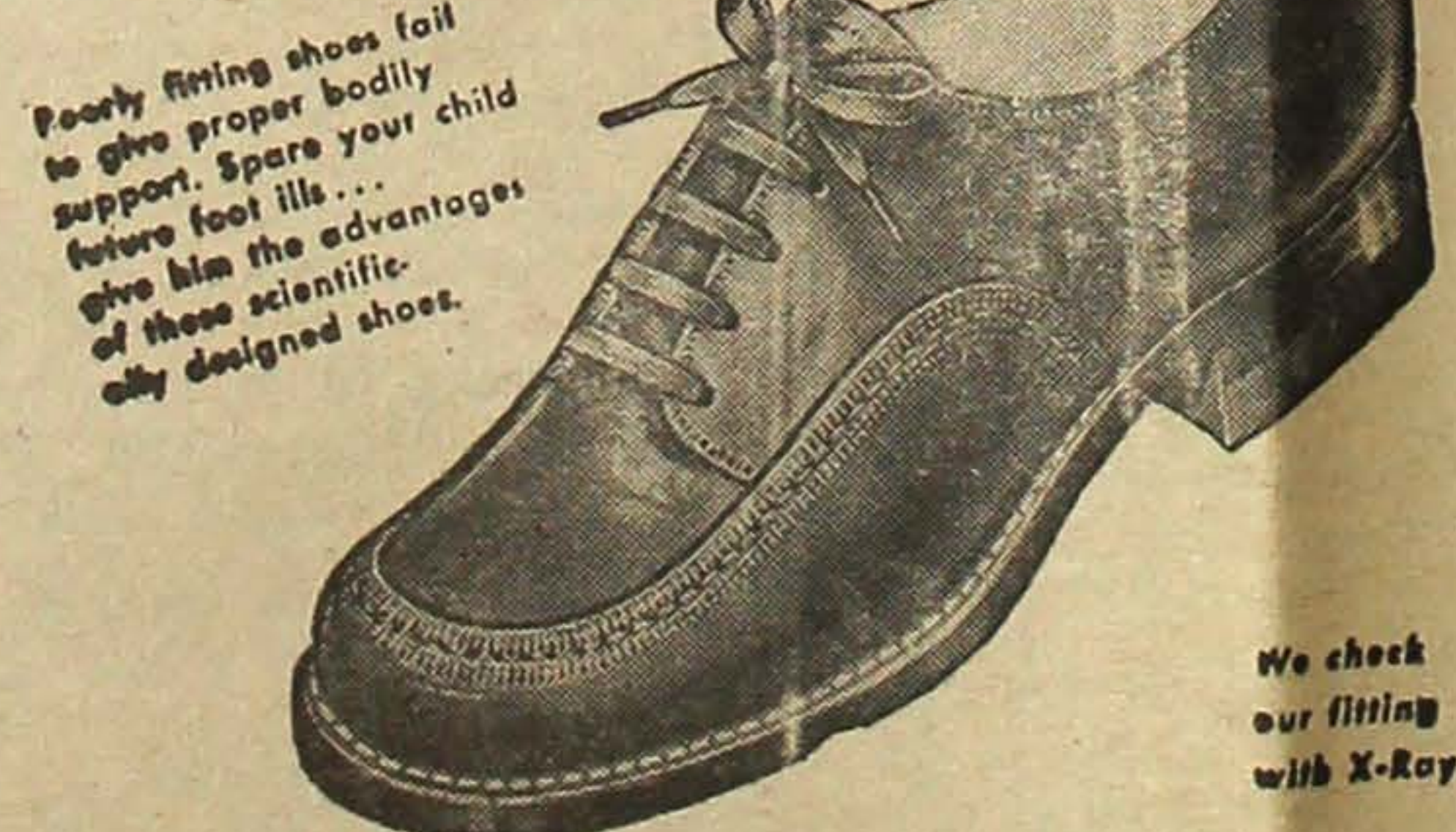
Sagamiya & Co.
524 MAIN ST.
MAin 7531
Patronize Your Advertisers
In The Northwest Times.

West Coast Printing Co
TOMITA BROS.
514 Main St. MA. 0233

MAIN FISH CO.
WHOLESALE
Pier 49
Foot of Washington St.
Seattle 4, Wash.
ELiot 0681

Anna Kay's Beauty Salon
110 14th Ave.
Phone EA. 7157

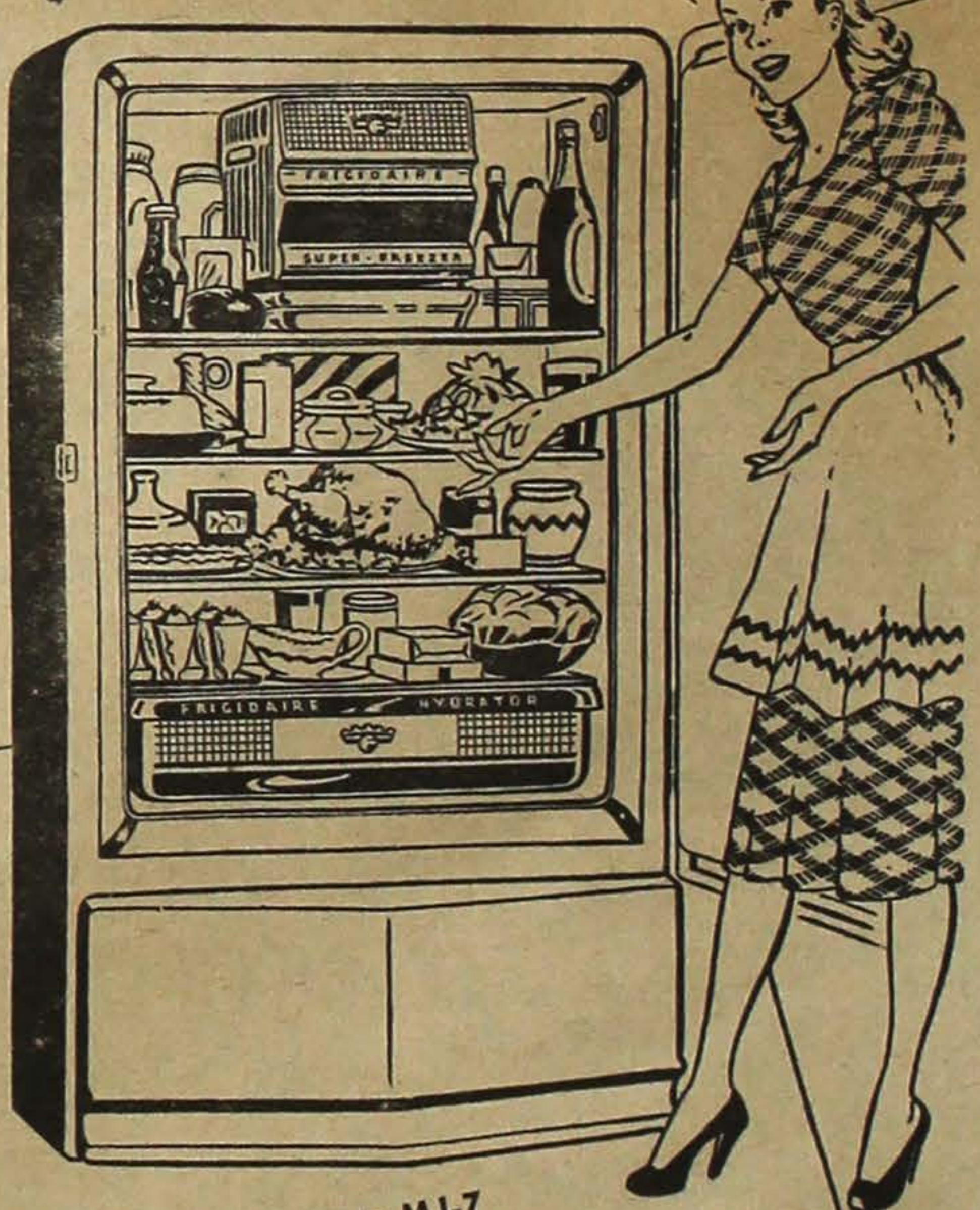
Shoes for the entire family.



Urakawa's TOKTOW SHOE STORE
826 Jackson St. SEneca 7076
Seattle, Wash.
Store hours: 9 a.m. to 7 p.m., week days.
9 a.m. to 9 p.m., Saturdays.

the New Frigidaire "Compact-7"

Holds more food
Than ever before in the same kitchen space!



Here it is! A new kind of refrigerator with MORE usable space on the new flat top, MORE frozen food storage in the big new Super-Freezer, MORE room for keeping fresh or frozen meats, MORE space for leafy vegetables and fruits, MORE usable shelf space for other foods, MORE food storage capacity per dollar.

- With all these FEATURES
- Famous Meter-Miser mechanism
 - Exclusive Quickcube Trays with Instant Cube Release
 - All-porcelain inside, stainless porcelain on bottom
 - Large Super-Freezer
 - Multi-purpose Storage Tray
 - Full-width, roller-bearing Hydrator, glass-topped
- And Many Other Frigidaire Features

Model Shown is MJ-7
\$219.75
Other "Compact" models priced from \$189.75

More Frigidaires Serve In More American Homes Than Any Other Refrigerator

Other Models (Standard)	
Range	184.75
Refrigerator	209.75

HIKIDA FURNITURE CO.

818-20 Jackson St. ELiot 2935
Res. FRanklin 4755

You will be surprised at the low cost of Mortgage life insurance
Protect your home!
Inquire from
STANLEY Y. KARIKOMI
District Agent
The Manufacturers Life Insurance Co.
531-6 Skinner Bldg. Telephone EL. 3993
Seattle 1, Wash. Residence CA. 8602

PLAY BALL

Lotus, Savoys Tie for Crown

NORTHWEST TIMES BASEBALL LEAGUE STANDINGS (Final)

Team	W	L
Savoys*	5	1
Lotus*	5	1
Fife	4	2
Veterans	4	2
Monarchs	2	4
Tacoma	1	5
Wash. Wood & Coal	0	6

* Lotus and Savoys will play off for league championship at a date to be determined by representatives of two clubs.

The championship team of the Northwest Times Baseball league for the '49 season will be either Lotus or the Savoys.

Lotus edged itself into the picture last Sunday by spanking the Monarchs, 8 to 6, at Garfield No. 1 field.

The heretofore undefeated Savoys fumbled their chance for a clean record by bowing to unpredictable Fife, 6 to 5, at Fleischmann Field in Sumner.

The two clubs will decide at a meeting early this week with league director Frank Fukano in regard to their playoff plans.

In the only other tilt, the Vets easily took care of Washington Wood & Coal in a six-inning stretch. The Vets, pounding the ball at will,

A Nisei Rendezvous
Chick's
Ice Creamery
 625 Jackson St. EL 9136

IKEDA & CO.
 WHOLESALE GROCERS
 Seneca 2196
 600 6th Ave. S.
 Seattle 4, Wash.

MAIN DRUG CO.
 Prescriptions Carefully
 Compounded
 Phone MAIn 6647
 522 Main St. Seattle 4, Wash.

clubbed out a 18-5 triumph. T. Mano, S. Toyoshima and K. Fukuma homed for the winners.

FIFE (6)

Player	AB	R	H
T. Osaka, 2b	4	0	1
Shigio, ss	4	2	2
Okada, 1b	4	1	1
Asahara, c	4	2	3
Yaguchi, p	2	0	2
J. Asahara, cf	3	0	0
Kubo, 3b	3	0	0
Shimizu, lf	2	1	2
Okamoto, rf	3	0	0
Total	29	6	11

SAVOYS (5)

Player	AB	R	H
Kodama, 2b	3	1	2
Hoshiwara, 3b	4	1	2
Asaba, cf	3	0	1
Yoshinaka, lf	3	2	2
Katayama, rf	4	0	2
Inouye, ss	4	0	1
Shibuya, c	4	1	1
Otani, 1b	3	0	1
Standen, p	3	0	0
Total	31	5	12

The running score follows:
R H
 Savoys 211 010 0-5 12
 Fife 111 010 2-6 11
 Batteries: Standen and Shibuya; Yaguchi and Asahara.

LOTUS (8)

Player	AB	R	H
T. Watanabe, 3b	5	1	2
Hoshiwara, 1b	2	0	0
Nishimura, ss	4	3	2
Terada, cf, p	4	1	1
T. Shimizu, rf, 1b	2	2	0
O. Edamura, p, 1b	2	0	0
Ichikawa, cf	0	1	0
G. Mano, rf	1	0	0
Kono, lf	3	0	1
Jingui, c	4	0	1
Yasunobu, 2b	3	0	2
Yamada, 1b	1	0	0
Total	31	8	9

Shanty Inn Cafe
 "WHERE FRIENDS MEET"
 110 12th Ave. CA. 9677

Patronize Your Advertisers
 In The Northwest Times.

Maneki
 Sukiyaki
 Tempura
 Private Parties
 MAIn 9723 304 6th Ave. So.

WHEN YOU WANT...
 Diamonds
 Watches
 Silverware
 Call SAIBO FUJII
 Bus. MA. 7670 Res. CA. 2517
 Personal Representative
Friedlander & Sons.
 5th at Pike
 CONVENIENT CREDIT—NO INTEREST—A YEAR TO PAY

For Your GRADUATES
 Longines \$71.50
 Withnauer \$49.75
 Longines and Withnauer Watches
 Time honored graduation gifts, Longines, "The world's most honored watch" - winner of 10 world's fair grand prizes - 28 gold medals - Official watch for the U. S. Olympic Committee - Withnauer, "Distinguished companion watch to the honored Longines for more than half a century." Longines watches from \$71.50 Withnauer watches from \$39.75
 Prices include Federal tax.

FRANK'S JEWELRY
 FRANK Y. KITAMOTO
 617 Jackson St.
 Seattle, Washington EL. 8377
 Authorized Agency for Longines-Withnauer Watches

MONARCHS (6)

Player	AB	R	H
Okamoto, cf	3	2	1
Matsuoka, ss	4	1	1
Murakami, 3b	4	1	1
Kitano, 1b	4	1	1
Takashima, rf	2	1	1
Kono, 2b	3	0	1
Kono, lf	2	0	0
Furumoto, lf	0	0	0
Kawahara, c	4	0	0
Teramoto, p	2	0	0
Total	28	6	6

The running score follows:
R H
 Lotus 203 011 1-8 9
 Monarchs 320 010 0-6 6
 Batteries: Edamura, Terada and Jingui; Teramoto and Kawahara.

VETERANS (18)

Player	AB	R	H
S. Mitsui, 2b	4	2	2
T. Nakanishi, rf	1	1	0
R. Michihira, ss	4	2	2
T. Mikami, 3b	1	1	1
T. Mano, 3b	3	4	2
S. Toyoshima, cf	5	2	3
H. Nakanishi, lf	4	2	2
T. Katayama, rf, ss	2	1	1
K. Fukuma, 1b	2	2	1
F. Sato, c	3	0	0
F. Okazaki, p	4	1	2
Total	33	18	16

WASH. WOOD & COAL (5)

Player	AB	R	H
Yoda, 2b	3	1	1
Ideta, 2b	1	0	1
Shiota, 1b	3	0	0
Kobayashi, ss	4	0	1
Urakawa, cf	3	1	1
Murakami, rf	2	2	1
Shigihara, lf	3	1	1
Matsumoto, ss	3	0	1
Kanzaki, c	3	0	0
Hirai, p	2	0	0
Fujikado, p	1	0	0
Total	28	5	7

The running score follows:
R H
 Vets 320 715-18 16
 Wash. Wood 004 010-5 7
 Batteries: Okazaki and Sato; Hirai, Fujikado and Kanzaki.

Friendly HAB's
 Complete Sportings Goods
 EL. 7038 815 Jackson St
 Seattle, Wash.

NISEI VETS (8)

Player	AB	R	H
Kinoshita, cf	5	1	0
Hori, rf	5	1	3
Heyamoto, 2b	4	1	1
Saito, ss	4	0	1
Matsushita, 1b	5	1	1
Sakai, lf	4	2	3
Yamaguchi, 3b	2	0	0
Kato, 3b	1	1	1
Yagi, 3b	0	0	0
Funai, c	2	0	0
Shinoda, c	3	0	2
Sasaki, p	0	0	0
Nakamichi, p	2	1	0
Total	37	8	12

NISEI VETS (8)

Player	AB	R	H
Watson, rf	4	1	1
Davis, ss	5	1	3
Wallace, lf	4	1	0
Larson, 3b	3	1	1
Baehm, 2b	5	2	3
Mayberry, cf	4	1	1
Knowles, lf, p	5	1	1
Carlson, c	4	0	1
Lubins, p	2	0	1
Reed, p, lf	2	1	1
Total	39	9	13

NISEI VETS (8)

Player	AB	R	H
Kinoshita, cf	5	1	0
Hori, rf	5	1	3
Heyamoto, 2b	4	1	1
Saito, ss	4	0	1
Matsushita, 1b	5	1	1
Sakai, lf	4	2	3
Yamaguchi, 3b	2	0	0
Kato, 3b	1	1	1
Yagi, 3b	0	0	0
Funai, c	2	0	0
Shinoda, c	3	0	2
Sasaki, p	0	0	0
Nakamichi, p	2	1	0
Total	37	8	12

NISEI VETS (8)

Player	AB	R	H
Seattle Elks	600	020	010-9 13 0
Nisei Vets	001	012	130-8 12 1

MAYNARD CAFE
 Oriental and American Dishes
 George Nose
 Joe Tanaka
 417 Maynard SE. 9464
 Seattle, Wash.

Physician's PHARMACY
 Follow the example—and the counsel—of your Physician. Bring his prescription to this Professional Pharmacy where you are assured competent and conscientious service. You will find that our prices are always fair.

Tokuda Drug
 GEORGE TOKUDA, PROP.
 "Favorite Nisei Fountain"
 Serving Welcome Guest Ice Cream.
 1724 Yesler CA. 3611

Reliable PRESCRIPTIONS
 Follow the example—and the counsel—of your Physician. Bring his prescription to this Professional Pharmacy where you are assured competent and conscientious service. You will find that our prices are always fair.

Local Veterans Drop Two More In City League

Seattle Nisei Vets dropped two more contests to run their string of losses to nine in the City league as Seattle Elks and Gibson's Carpet Cleaners scored their wins over the Nisei nine.

Last Friday, the Elks barely nosed out the Vets, 9-8, at Rainier field in a wild contest. The Vets' scoring department got underway late in the game and finally caught up with the Elks in the eighth inning with a three-run rally. The Elks came back in their half of the frame to push over the winning tally.

A seventh-inning outburst by Nisei Vets was matched by Gibson's Carpet Cleaners in their half of that inning to send the hapless Nisei outfit still deeper in the league cellar with a stinging 6-4 count last Sunday at Lower Woodland.

With the score tied at 1-1 in the first six innings, Vets opened the seventh with a sharp single by Heat Heyamoto. Ray Saito beat out a sacrifice hit and the stage was set for Ted Matsushita to single home Heyamoto. Two more tallies were chalked up on Sambo Sakai's double into right field.

George Shimizu, who had the carpet cleaners tamed for six innings, bumped into Lady Misfortune in the seventh. Four singles and four runs were in the scorebook when the inning finally came to an end.

The box scores of both contests are as follows:

SEATTLE ELKS (9)

Player	AB	R	H
Watson, rf	4	1	1
Davis, ss	5	1	3
Wallace, lf	4	1	0
Larson, 3b	3	1	1
Baehm, 2b	5	2	3
Mayberry, cf	4	1	1
Knowles, lf, p	5	1	1
Carlson, c	4	0	1
Lubins, p	2	0	1
Reed, p, lf	2	1	1
Total	39	9	13

NISEI VETS (8)

Player	AB	R	H
Kinoshita, cf	5	1	0
Hori, rf	5	1	3
Heyamoto, 2b	4	1	1
Saito, ss	4	0	1
Matsushita, 1b	5	1	1
Sakai, lf	4	2	3
Yamaguchi, 3b	2	0	0
Kato, 3b	1	1	1
Yagi, 3b	0	0	0
Funai, c	2	0	0
Shinoda, c	3	0	2
Sasaki, p	0	0	0
Nakamichi, p	2	1	0
Total	37	8	12

NISEI VETS (8)

Player	AB	R	H
Kinoshita, cf	5	1	0
Hori, rf	5	1	3
Heyamoto, 2b	4	1	1
Saito, ss	4	0	1
Matsushita, 1b	5	1	1
Sakai, lf	4	2	3
Yamaguchi, 3b	2	0	0
Kato, 3b	1	1	1
Yagi, 3b	0	0	0
Funai, c	2	0	0
Shinoda, c	3	0	2
Sasaki, p	0	0	0
Nakamichi, p	2	1	0
Total	37	8	12

NISEI VETS (8)

Player	AB	R	H
Kinoshita, cf	5	1	0
Hori, rf	5	1	3
Heyamoto, 2b	4	1	1
Saito, ss	4	0	1
Matsushita, 1b	5	1	1
Sakai, lf	4	2	3
Yamaguchi, 3b	2	0	0
Kato, 3b	1	1	1
Yagi, 3b	0	0	0
Funai, c	2	0	0
Shinoda, c	3	0	2
Sasaki, p	0	0	0
Nakamichi, p	2	1	0
Total	37	8	12

NISEI VETS (8)

Player	AB	R	H
Seattle Elks	600	020	010-9 13 0
Nisei Vets	001	012	130-8 12 1

NISEI VETS (8)

Player	AB	R	H
Seattle Elks	600	020	010-9 13 0
Nisei Vets	001	012	130-8 12 1

NISEI VETS (8)

Player	AB	R	H
Seattle Elks	600	020	010-9 13 0
Nisei Vets	001	012	130-8 12 1

NISEI VETS (8)

Player	AB	R	H
Seattle Elks	600	020	010-9 13 0
Nisei Vets	001	012	130-8 12 1

NISEI VETS (8)

Player	AB	R	H
Seattle Elks	600	020	010-9 13 0
Nisei Vets	001	012	130-8 12 1

NISEI VETS (8)

Player	AB	R	H
Seattle Elks	600	020	010-9 13 0
Nisei Vets	001	012	130-8 12 1

NISEI VETS (8)

Player	AB	R	H
Seattle Elks	600	020	010-9 13 0
Nisei Vets	001	012	130-8 12 1

NISEI VETS (8)

Player	AB	R	H
Seattle Elks	600	020	010-9 13 0
Nisei Vets	001	012	130-8 12 1

NISEI VETS (8)

Player	AB	R	H
Seattle Elks	600	020	010-9 13 0
Nisei Vets	001	012	130-8 12 1

NISEI VETS (8)

Player	AB	R	H
Seattle Elks	600	020	010-9 13 0
Nisei Vets	001	012	130-8 12 1

NISEI VETS (8)

Player	AB	R	H
Seattle Elks	600	020	010-9 13 0
Nisei Vets	001	012	130-8 12 1

The Social Whirl

ENGAGEMENT TOLD

Ruby Chow's restaurant was the setting for the engagement announcement of Miss Grace Gojio, daughter of Mr. and Mrs. S. Gojio, to Mr. Mike Hattori, son of Mr. and Mrs. B. Hattori of Moses Lake, Wash., on Friday, June 10.

A cleverly made place card on a baked potato of a road sign pointing to Moses Lake, 170 miles, and the other end inscribed with the guest's name was the manner in which the betrothal was revealed.

Attending the affair were the Mesdames Rick Tanagi, Roy Tanagi, George Gojio, Bo Chikusa, Paul Minato, George Minato, Howard Minato, George Shimizu, Ted Nakanishi, Frank Tsujii and Nob Kawada and the Misses Susie Shimizu, Yasuko Ota, Naoko Anzal, Kazzie Suzuki, Helen Yamamoto, Ann Dady, Kinko Fujii, Mitzie Ideta, Barbara Kanzler, Lilly Nagai, Hisa Matsuura, Sachi Yasui, Peggy Tanaka, Sally Onishi, Ruth Yamaguchi, Pat Hidaka and Fumi Onodera.

No definite wedding date has been set.

SPOKANE MARRIAGE

SPOKANE, Wash., June 15—Miss Mrs. Sakuma, daughter of Mr. and Mrs. E. Sakuma of Seattle, will be married to Mr. Sachiyo Ikeda, son of Mr. and Mrs. U. Ikeda, formerly of Tacoma but now of Spokane, on Sunday, June 26, in the Spokane Buddhist Church. The Rev. Terao will officiate.

Attending the bride will be her sisters, Fumi and Pat Sakuma, as maid of honor and bridesmaid respectively. Little Esther Otomaru will be the flower girl.

FIRST CHILD

MINNEAPOLIS, Minn., June 15—Mr. and Mrs. Tom Moriguchi became the parents of a baby girl on Saturday, June 11. Mrs. Moriguchi is the former Taeko Kurimura of Seattle.

CALIFORNIA-BOUND

Mr. and Mrs. Takashi Fujii of this city left this week for a two-week vacation to California.

WEDDING BELLS

Sunday, June 19, has been set for the wedding of Miss Kathryn Hashizume, daughter of Mr. and Mrs. Frank Y. Hashizume, to Mr. Nobu Suyama, son of Mr. and Mrs. S. Suyama, in the Pilgrim Congregational Church. The Rev. Ai Chih Tsai will officiate.

Attending the couple will be the bride-elect's sister, Joanne, as maid of honor; Miss Aya Ishibashi and Mrs. Kenny Oyama, bridesmaids; Mrs. Ed Horiuchi, best man; and Messrs. Kenny Oyama and Blotz Suyama, brother of the groom-to-be, ushers.

TACOMA VISITORS

TACOMA, Wash., June 15—Mrs. Miyo Kanda and her son, Eugene, flew in from Denver, Colorado, for a month's vacation here. They are visiting Mrs. Kanda's parents, Mr. and Mrs. G. Abe of this city.

DINNER-SHOWER

A combination dinner and baby shower was given for Mrs. Harold Horiuchi last Saturday night in the home of Mr. and Mrs. Henry Yorozu.

Besides Mrs. Horiuchi and her husband and the Yorozus, others attending the affair were Mrs. Joe Fujii, Mr. and Mrs. Shig Watanabe, Mr. and Mrs. Terry Kurimura, and Messrs. Sab Ogishima and Tom Okazaki.

BABY SHOWER

Mrs. Jimmy Yamaguchi was honored at a baby shower on Friday, June 10, in the home of Mrs. Suma Yagi. Hostesses for the affair were the Mesdames Fusa Funai and Sei Fujiwara.

Those present besides the honored guest and the hostesses were the Mesdames Suma Yagi, Rose Matsushita, Chiye Yabuki, Lillian Matsuhira, Mae Yoshinaka, and Toshiko Shimizu.

Mrs. Yamaguchi is the former Nori Hoshiko of Fresno, California.

ENTERTAIN YOUTHS

TACOMA, Wash., June 15—The Rev. and Mrs. Niwa entertained a group of young people in their home on Sunday, June 5.

Honored at this affair was Miss Alyce Yamaguchi, who was graduated by College of Puget Sound this year. Miss Yamaguchi will leave this week for California to join her parents.

Municipal Beaches to be Open Friday; Playgrounds to be Ready Next Monday

When Seattle's thousands of school children collect their final report cards this Friday their thoughts will be centered upon summer fun. The Seattle Park Department will be ready for them with a full program of recreation activities, in the water and on land.

This week, the Park Department announced its summer schedules for playgrounds and beaches. All playgrounds will open under trained supervision on Monday, June 20, on a full-time basis. Fields will be open under leadership from 1 to 9 p.m. Monday through Friday and from 9 a.m. to 6 p.m. on Saturday. Organized sports and games, craftwork, group games and cooperative play will be featured at these centers. For the smaller children there will be sandbox play, story hours and other activities suitable to their age.

Municipal beaches and Colman Pool will open Friday, June 17 for the season. All beaches will be open seven days each week through Labor Day from 11 a.m. to 8 p.m. Colman Pool will be open from 12 noon until 8:30 p.m. daily.

Free swimming classes open to all junior boys and girls will be offered at all municipal swim centers, starting Monday, June 20, and will continue for eight weeks.

Persons interested in the classes at Colman Pool are advised that no children under 39 inches in height may take swimming lessons at Colman because of the depth of the pool's shallow end. Only swimmers in the classes will be admitted to Colman on class days between the hours of 12 noon and 3 p.m.

Ever Since Eve . . .

(Continued from Page One)

spots of Washington. With these charming places in mind, let's jump aboard the 'Vacationland Special' and leave the sweltering sidewalks of the city far behind us. All aboard!!!

CFRC Schedules Tea, Musical

A benefit garden tea and musical for the Christian Friends for Racial Equality will be held from 3 to 6 p.m. on Sunday, June 19, in the home of Mrs. Madeleine M. Brake at 1609 28th Ave. Hostesses for the affair are Mrs. Blake and Miss Marjorie L. Anderson.

Artists who will entertain at the tea are soloists, Mrs. Minnie Itoi, Mrs. Nora Hatter, Annie Mary Knighton and Hugh Jones; violinists, the Rev. Paul Fong and Stanley Dickson of Auburn, Wash. The Ft. Lawton gospel singers, directed by Charles Staton, will also be on the program.

All persons interested are cordially invited to attend.

The Enlisted Reserve Corps of the United States Army is expanding, and there are openings for veterans of all the armed forces.

AL MAR'S
12th Ave. Food Market
CA. 0706 Free Delivery
118 12th Ave. Seattle

109 18th So. MI. 1320
Rainier Garage
Auto Repair
I. Furumoto Res. MI. 0832
Kura Mizuta

Starlettes Eye Beach Party

All Lotus Starlettes who plan to attend the beach party on Thursday, June 16, at Alki beach are asked to meet in front of the Buddhist temple by 2 p.m. on that day.

Tickets for the party may be purchased from Joyce Toshii, Anne Aoyama, Irene Fujii, Marianne Otoshi and Jane Okamoto.

Homes For Sale

WEST SEATTLE

Modern. Two years old. Two bedrooms. Large living room with picture window. Kitchen with dinette. Hardwood floors throughout. Full basement. Oil heat. Corner lot 50X110. Close to a new school. Full price \$8,900. \$1,300 cash. Balance \$51 a month including taxes and insurance.

BELLEVUE HOME

Modern. Two years old. Two bedrooms. Living room, kitchen with dinette. Utility room. Hardwood floors throughout. Oil heat. Electric hot water. Lots of closets. On a corner lot. Large garage with breezeway to the house. Near new shopping center. Full price \$9,500. \$2,000 down and balance FHA terms.

CLOSE IN

Near Buddhist Church. Six yrs. old. Two bedrooms, living room and kitchen. Full basement. Oil heat. Corner lot. Close to bus and stores. Full price \$6,000. \$2,500 cash down.

International Realty

James M. Matsuoka
659 Jackson St. MA. 1522
Seattle 4, Wash.

WSCS to Install New Officers

New officers of the W.S.C.S. will be installed this Friday, June 17, in the home of Mrs. Hideko Shimomura, 756 30th Ave. Mrs. Tami Fukuda and Miss Helen May Smith are in charge of the program.

The group's cabinet members are Mrs. Sumi Kuriyama, president; Mrs. Aya Shimomura, vice president; Mrs. H. Shimomura, secretary; and Mrs. J. Kanetomi, treasurer.

Collins Girls Cop Honors

Lassies from Collins playfield earned some honors in the annual Girls' Fun Frolic in Woodland Park last Saturday afternoon.

Collins placed second in the athletic division of the costume parade and third in the national division of the same event. Alicia Chinn, Janice Shoji, Lillian and Jean Ueno were members in the national affair.

Gloria Hikida earned a few points for Collins in the playground track meet.

Collins, however, was nosed out 5 to 3 by Ballard for the city playground softball championship.

JACKSON GROCERY
1803 Jackson St. Ea. 0603
Prop. Mrs. Hannah Maekawa

Obituary

MRS. TAKA KADOSHIMA

Mrs. Taka Kadoshima, 77, of 1429 Jackson St. died on Friday, June 10. She was born on Sept. 26, 1871 in Japan and has lived in this community for 43 years.

Wake services were held on Tuesday, June 14, in Butterworth's Chapel and funeral services will be from 7:30 p.m. on Wednesday, June 15, in the Buddhist temple under the direction of Butterworth & Sons. Cremation will be after the services.

The deceased is survived by a daughter, Mrs. Michiko Aoki, and a son, Mr. Roy K. Kadoshima, both of Seattle.

Veterans by the thousands are enlisting in the United States Army today. These men know the Army offers them a better deal than civilian life. See your recruiting sergeant, and find out if you can qualify for enlistment.

Phone **ELIOT 6863**
Dr. Terrance M. Toda
OPTOMETRIST
- 616 Jackson Street

Gyokko-Ken
Cafe
508-510 Main St.
MA. 3662
Seattle 4, Wash.

GRADUATION Special Sale

WATCHES
1/2 Price
America's Leading Makes



Regular \$79.50
SPECIAL \$69.50 (plus tax)
(\$5.00 down, \$5.00 month)

See Other Items at Drastically Reduced Prices

Chihara Appliance Co.

Chihara Jewelry Co.

612 - 614 Jackson St. MAin 2275

Save \$100. to \$150.00 on the FINEST PICTURE MONEY CAN BUY!

1949 Bendix "Front Row" Television



Nationally Advertised Price **369.95**
Special Savings For You **100.00**
YOU PAY ONLY 269.95

Delivers It!

The compact cabinet in blonde, or dark mahogany with brass door pulls, closes when set is idle. 52" picture of movie-screen perfection. Built-in antennas. Pushbutton tuning for all TV channels. Automatically maintained picture contrast, brightness, detail and sound volume. Installation extra where necessary.

The Men Who Fly Say... Buy Bendix!

Yes! Ask any airforce, commercial or private flier and he will tell you about the quality, performance, and workmanship of Bendix Radio products. Ask those World War II pilots whose very lives depended on radar and communications equipment by Bendix.

Now, the same engineering and manufacturing facilities that produce Bendix communications equipment is building Bendix "Front Row" Television receivers for America's homes - for YOU. You can place your confidence in Bendix.

PRODUCT OF BENDIX AVIATION CORPORATION

Yesler Hardware & Plumbing Supplies

1713-15 Yesler Way EAst 5660