

New Year

EDITION



The NEWELL STAR

1945

THE NEWELL STAR

Published weekly
and distributed free of charge to every unit.
Official publication of the Tule Lake Center.

John Bigelow Reports Officer
Robert Ross Ass't Reports Officer
Press Office 916-A Telephone 8503

A HAPPY NEW YEAR

Editor-in-Chief.....Iwao Namekawa

ENGLISH SECTION

Managing Editor.....Nob Myose
Associate Editors....Ray Hayashida, Marshall Nakachi
Sports Editor.....Sat Muneoka
Editorial Staff: Hiroshi Nishikawa, Shizu Nishino,
Sadae Okuda, Nob Shino, Bob Toyama
Art Editors.....Iro Hatagami, Takao Matsuda
Cartoonist.....Bob Toyama
Stencil Typists.....Kisao Kamada, Hideko Togami
Publication: Mits Domen, Tom Shimizu, Ichiro Yoshimi

JAPANESE SECTION

Staff Members: Chikao Fukui, Junko Maruya, Shizuo
Mizuhata, Noriyoshi Okamoto, Masao Shimada, Yuta-
ka Yokotake, Minoru Nehira

IN APPRECIATION

To the Mess Operations Division and chief cooks and workers of Kitchen 7, 8, 10 for bearing our impositions; to Miss Kiyoko Kurisu, Reports Office secretary, for her willing service; and to Mr. Ryo-

ichi Hamano for faithfully cleaning up the mess each night, the NEWELL STAR staff extends its sincere appreciation for their unsung parts in the publication of the paper during the past year.



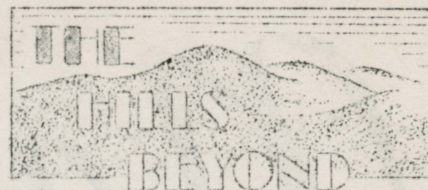
A Message

The action of the Army officials in removing the mass exclusion order of effective Jan. 2 means a new and fuller life for the people of the Tule Lake Center. Those who are on the Army list may now return to their former homes, their old friends and neighbors, and resume civilian life without restriction. Those who are excluded from certain areas, may also seek new homes in the parts of the U. S. open to them. Those who have elected to be loyal to Japan will have the opportunity of following that course, subject to the restraints that the government may impose.

It is with a feeling of confidence that we enter the new year. Confidence in the future, in our own ability as individuals, and in this country which is demonstrating its faith in democracy and democratic institutions.

As Project Director, I bring you the season's greetings, and best wishes for happiness and prosperity.

R. R. Best.



Those of us who are still leading a life of confinement at the opening of the new year find the hills beyond ever more remindful of the long, weary travel that awaits us.

Though individual choice may lead us in diverse directions, the same rules of life prevail. Those who have learned them well will be generously rewarded, and those ignorant of them will find the penalties severe.

There can be no better discipline towards mastery of the Art of Living than the very adversity that we are prone to pessimize here in this center. Certainly this segmentary life lends little to our material preparations for the future, but the gains to be found in this seemingly sterile life take us nearer to the loftier aims of being better man and woman.

In this communal life wherein one can no longer sell himself behind the thin facade of wealth and social status, the standard and measurement of a man's worth rest pretty much upon the distinction of a "first-rate" and a "second-rate". We are judged and accepted only for what we are.

There is gain in studying the attributes of those who are held in esteem by their fellow-men. There is gain in studying the short comings of those whom people find less welcome..... There is gain in re-evaluating our own characters and determining those attributes, the perfection of which we can strive for.

The rewards from these gains, however, are at first more to be felt by the soul than to be perceived by the eye. But it is just this warming inner satisfaction that we are better equipped to strive for values beyond the mundane pursuit of the daily bread that translates itself in the future in terms of achievements of lasting worth.

The NEWELL STAR

VOL. II NO. 1

NEWELL, CALIFORNIA

JANUARY 1, 1945

ENGEI KYO-KAI To Hold 3-DAY DRAMA SERIES

"Thespian Night," a series of dramas, sponsored by the Engai Kyo-kai will be presented at the high school auditorium, this Thursday through Saturday, Jan. 4-6, at 7 p.m., it was reported by Community Activities.

The program features various Japanese classical dances and kabuki dramas. There will be no repeat performance, with a different program each night.

Tickets for "Thespian Night" are now on sale at 914-D, 1406-D, and at Block Offices 29, 32, 44, 53, 58, 70, and 77 for 15 cents each.

BOOKS SENT HERE Via RED CROSS

Following up the news that a ton and half of imonhin books were sent to Japanese nationals in U.S. by Japan via the International Red Cross, the Block Managers' Headquarters reported that Tule Lake has received seven boxes of literature including some 300 books as its quota.

It was further revealed that they are at present considering a plan submitted by the Negotiating Committee with the Spanish Consul to establish a central library of books received as imonhin from the Japanese government.



"Tall in the Saddle" on Jan. 1 at Aud. Shows at 12:45, 3, 6:30, 8:45 p.m.

WRA REITERATES LEAVE ELIGIBILITY OF EVACUEES

After a short time, leave permits will no longer be required, according to the Administration.

The only persons not free to leave any of WRA centers, including this center, after Jan. 20 will be those who have been served with individual notices by the Army, or parolees or deportees ordered detained by the U. S. Department of Justice.

All other persons now residing in the centers may leave the center on request. Those in centers in California and who have received individual exclusion orders, will be required to secure a military permit to leave the

3 COAST AREA WRA OFFICES PLANNED

WRA area relocation offices to be established in the immediate future on the Pacific coast will be in Los Angeles, San Francisco, and Seattle with district offices all along the coast, it was revealed by the Administration.

Harold Fistere will supervise the Seattle Office; Walter Mowing will supervise the San Francisco Office, and Paul Robertson, until recently the assistant project director here, will be in charge of the Los Angeles Office, it was disclosed.

ROBERTSON TAKES NEW ASSIGNMENT

Paul Robertson, former assistant project director in charge of Operations here, departed Wednesday for Los Angeles where he will assume duties as supervisor of the area relocation office, it was announced by the Administration.

THANKS

To Messrs. Daibo Fujii, Hiroshi Morimoto, Tom Matsuda and the Motor Pool and Office Service sections, our hearty thanks for their "pinch hit" services during the rush hour for this special issue.

center for relocation in other parts of the country, for the present at least. They may relocate to other parts of the country. The individual exclusion orders define the areas to which they are not permitted to go.

Persons leaving a center without relocation plans approved by the WRA will be ineligible for relocation assistance grants or property transportation assistance. The WRA will do all it possibly can to assist residents of the centers to prepare sound relocation plans, stated Ray Best, project director.

The fact a person has applied for repatriation or has been denied leave clearance or placed on a WRA stop list, will not preclude his leaving a center, if he has not been put on a stop list by the War Department.

MYER'S MESSAGE

There is a special meaning and a renewed hope in this Christmas of 1944 at the relocation centers. Within a few days the great majority of you will be restored to your free and rightful place in the society of this country. That is your promise for a fuller and more pleasant life. That is my hope that next Christmas each of you will spend the holiday season pleasantly before his own hearth.

To all the residents of the centers and all of the appointed personnel, Merry Christmas. May the coming year bring you a stronger faith in your fellow men.

WRA ANNOUNCEMENT

TULE LAKE RELOCATION OFFICE TO OPEN ANEW

Steps are being taken for the immediate opening of a relocation office in this center for the purpose of assisting residents who plan to leave the center. Detailed announcement will be made by the project officials as soon as possible.

The Administration stated that job offers will be provided and in many instances details of employment can be arranged through this office before the evacuee or his family leave the center.

Travel grants will be made available to all evacuees whose relocation plans are approved by the WRA. This will apply both to those who are leaving the center for the first

time for relocation in any part of the country, or to those who had previously relocated who now plan to return to the west coast area. Relocation grants and subsistence while en route will be provided to those who make application if they are in need of such assistance.

SOLDIER'S KIN TO RECEIVE PRIORITY

Priority in the consideration of the cases of parents of U. S. soldiers will be given in relocation, whether it is for the purpose of returning to the former excluded area or relocating in other parts of the U. S., it was announced by Project Director Ray Best.

First consideration will be given by the Army authorities in establishing clearance for the parents of soldiers, Best declared. First consideration will also be given them by the WRA in making available facilities and assistance.

This will include the same grants for travel and

REPORT 6 TULE WAR CASUALTIES

The toll of war once again casts its shadow over this center with latest reports revealing six casualties with next of kin residing in this center.

Pvt. John Okada, (Palo Alto, Calif.), nephew of Mrs. Itsuji Takeuchi, 2619-E, killed in action in France.

S/Sgt. Atsuo Salaria, brother of Kanaye Salaria, 7312-C, reported killed in action on Dec. 15.

Sgt. John Hashimoto, son-in-law of Mrs. Hanzo Marumoto, 6817-E, missing in action in France on Nov. 14.

Pfc. Yasuaki G. Abe, 27, (Marysville, Calif.), son of Mr. and Mrs. Yasukichi Abe, 4706-D, wounded in action on Oct. 29.

Pfc. Akira Matsumoto, 30, son of Mr. and Mrs. Manki Matsumoto, 3903-A, wounded in Germany on Nov. 20.

Pfc. George T. Kondo, brother of Tadashi Kondo, 4116-E, slightly wounded in action on Dec. 4.

the shipment of personal property which has been available to those resettling from the relocation centers.

Vital STATISTICS

BIRTHS

Boy to Mr. and Mrs. Kameichi Fukumoto, 519-C, on Dec. 13.

Girl to Mr. and Mrs. Yutaka Hamada, 2217-D, on Dec. 13.

Boy to Mr. and Mrs. Katsumi Shimoda, 18307-I, on Dec. 13.

Boy to Mr. and Mrs. Noboru Ota, 4018-F, on Dec. 14.

Boy to Mr. and Mrs. Yutaka Mutow, 7903-H, on Dec. 14.

Girl to Mr. and Mrs. Chiyoji Nagatoshi, 1703-D, on Dec. 15.

Boy to Mr. and Mrs. Sadami Doida, 8307-G, on Dec. 15.

Girl to Mr. and Mrs. Akira Watanabe, 3706-A, on Dec. 15.

Boy to Mr. and Mrs. Kiyoshi Nitta, 8415-E, on Dec. 19.

Girl to Mr. and Mrs. Miroshi Genishi, 6811-D, on Dec. 19.

Boy to Mr. and Mrs. Seikaku Takesono, 7912-B, on Dec. 20.

Boy to Mr. and Mrs. Yoshio Hori, 2719-F, on Dec. 21.

Boy to Mr. and Mrs. Yasuo Murakami, 7512-I, on Dec. 21.

Boy to Mr. and Mrs. Shigeo Kashima, 6613-A, on Dec. 21.

DEATH

Yukiju Kawashiri, 5004-D, 67 years old, on Dec. 15.

Thwarted Newshens Lament Press Office Gripes

Where there are people, there are gripes. And so it is, that at the press office, where in a cubicle fit for six and occupied by 20, that gripes abound.

A milky veil of smoke shrouds the individual who steps foot into the office ... smoke, created gratis by the male chimney stack smokers who "roll their own" nowadays and in the process nonchalantly leave a trail of tobacco as mute evidence of their presence.

Another gripe that we female staff workers have is the torrid imprecations let loose by the males when things go awry.

... wheew! Someone get a bar of soap. Of course, we women have occasion to swear too, but being the superior form of humanity we manage to veer away from the pro-

fane by sheer force of will ... ahem!

In an office where there are male creatures in excess, it's surprising how few gentlemen there are. With the passing of the generations, and with the concurrent depleting of the chivalrous men, we women left in a deplorable plight have cause to complain... ah me!... ah fate! ah... nuts!!!!

Farewell

To the residents of Tule Lake, may I at this time express my sincere appreciation for your cooperation and friendship during my stay here as assistant project director.

Paul G. Robertson

In Retrospect



Felicitating the New Year, the eighteen thousand inhabitants of this center once again look to the eastern sky seeking celestial omen of delivery from the aching pains of long adversity.

Night withdraws with the coming of daybreak, but yesterday's accomplishments remain as constant reminders that the future is rooted in the past. And in anticipating what tomorrow may bring, we seek in part an answer from what has transpired in the bygone yesteryear.

January, a year ago today, was overcast with a gloom of abject depressiveness, and it was not until a half a month had elapsed that with the gradual return of workers to their jobs, a ray of hope broke through the grey clouds of anxiety. A momentary distraction was offered with the simultaneous reception of the newly arrived segregants from Manzanar and the shipment of imonhin from the Japanese Red Cross. And with the lifting of curfew on February 22, the long awaited return to normalcy was officially launched, thus initiating the more normal entries into the annal of Tule Lake Center.....

THUS RUN THE EVENTS:

March 9 -- NEWELL STAR makes debut publishing news of farm work registration, pre-induction calls for two Tuleans and of the recording of 39 births for the month of February.

March 17 -- Dillon Myer visits center and expresses satisfaction on gradual return to normalcy.

March 18 -- Gala three-day welcome program for new arrivals held in gym.

March 30 -- Best announces ruling on family employment and also releases policy on Japanese schools.

April 20 -- Eighty-two in center receive notice to report for physicals. SOCIAL GADABITS column adds human interest to the newspaper.

April 22 -- Representative Committee formation is approved.

April 24 -- Danjo Seinenkai puts on grand one-week exhibit at auditorium.

April 27 -- One-hundred- and - eighty acres planted on farm.

May 14 -- Advance contingent of segregants arrives from Jerome and Rohwer, augmenting population to 18,029.

May 18 -- Stockade confines 319.

May 24 -- James Shoichi Okamoto shot when returning from work through main gate by army sentry.

May 25 -- Okamoto dies...Army investigation ordered. Army hands control of stockade over to WRA. Second Anniversary Tule Lake Center...More segregants arrive from Heart Mountain, Jerome, Rohwer, Granada to swell population to 18,526.

May 31 -- Nine thousand attend final rites of James Shoichi Okamoto.

June 25 -- First Japanese movie shown.

June 28 -- Nineteen Tule Issei sent to Santa Fe Internment Camp.

July 1 -- Two-day center-wide carnival opens.

July 2 -- Co-op General Manager slain.

July 6 -- Court martial proceedings begin for sentry who shot Okamoto.

July 13 -- Presidential signing of Denationalization Bill reported. Approval of colony irrigation project awaited.

July 16 -- High school graduates 120 seniors. Bon Odori held at various wards.

July 19 -- Colonial Police staff resigns. Twenty-seven Nisei draft violators taken to Eureka to await trial.

July 25 -- Draft charges dismissed as judge decrees due process of law not accorded internee of Tule.

August 2 -- Civic Organization renamed Block Managers Headquarters.

August 4 -- Newly-organized Colonial Peace Department assumes duties.

August 10 -- Hog farm slaughterhouse opened.

August 15 -- Employees of WRA total 5,961, marking increase of 950 workers since March. Hospital Koenkai formed.

August 18 -- Tule Lake Segregation Center with 18,698 found most populous of nine centers--population, 79,404.

August 26 -- Stockade vacated for first time since its creation.

September 7 -- Renunciation bill under review--Myer.

September 10 -- Joint Kekumin Gakko track meet held.

October 8 -- Fire Prevention week to be observed.

October 13 -- Imonhin drive nets \$952.

October 23 -- Outside purchase of bread discontinued as bakery produces enough for center consumption.

October 31 -- Peak of farm harvest reported with 2,551,659 lbs.

November 3 -- Meiji Setsu observed.

November 16 -- Initial procedures clarified on renunciation process.

November 20 -- Sixty-seven Nisei housed in Block 99. Thirteen families leave for Crystal City to rejoin heads of families.

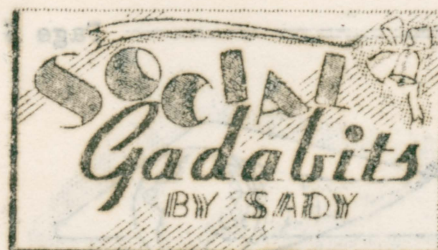
November 24 -- High school days end for 230 seniors.

December 6 -- Department of Justice official arrived to hold citizenship hearings.

December 14 -- Queries on renunciation procedure answered by John L. Burling, Department of Justice official.

December 16 -- Tri-State High School begins showing 35mm movies with equipment purchased from Co-op.

December 17 -- Western Defense Command lifts West Coast Exclusion Order.



OUR CHURCHES

BUDDHIST CHURCH

The Tule Lake Buddhist Church, newly organized in April by the entire Shin-shu followers, conducted regular Sunday School classes, YBA and adult services and other weekly lectures in all eight of its ward churches.

Organized under the church are the Sunday School Teacher's League, YBA, and Sonen-kai. These organizations in conjunction with the Buddhist churches successfully sponsored Hana-matsuri, Bon-odori and the mass memorial service for the War Dead as highlights of the Buddhist activities for the year.

Since segregation, major Buddhist denominations to remain active were the Shin-shu and the Nichiren-shu, but with the arrival of interned reverends from other centers in May, other sects including Zen-shu, Jodo-shu and Shingon-shu

came into existence.

All Buddhists will long remember the numerous activities in which they have attended and participated during the year in order to brighten their dark center life through spiritual enlightenment. Now, with all the various sects perpetuating the entire Buddhist movement of this center, a much more extensive schedule of religious activities may be anticipated for the coming year.

UNION CHURCH

The Tule Lake Union Church was organized soon after the establishment of the Tule Lake Project in the summer of 1942. The activities of the church have reflected a continual strife toward a higher degree of unity among the residents of the center as well as unity with the Christian Church.

The members of these Christian groups have kept secondary their own denomination as being a Baptist, Episcopal, Presbyterian, or other Protestant denominations and have unselfishly worked to operate the church activities on an inter-denominational basis, thus the official name Tule Lake Union Church was adopted.

held its regular evening gatherings at the high school.

With its headquarters located at 3001-D, activities are planned both for the Issei and Nisei. Sunday School, Sunday morning worship, and evening Bible movie classes are conducted every Sunday. The Young People's Fellowship group, formerly by whose virtuosity this may become the applauding point of the show.

SO ONCE AGAIN

as time turns back upon the old and forwards into the new, all things, material and spiritual, prepare to enact their parts with more perfection, courage and sincerity.

Judging from the number of marriages in this center, there evidently is a Shakespearean Puck at work who goes mischievously about anointing the eyes of innocents with a love potion which results in effecting... love! As might be expected, June was the most popular nuptial month with 24 couples middle-aging. October, however, was the next most unioned with 16 pronounced man and wife. The youngest bride and groom were 18 and 19; the oldest 43 and 44.

Weddings totaled 127 averaging about 12 each month... all told, the fabulous Puck may be credited with having had a successful year.



A YEAR

...365 days, 5 hours, 48 minutes, and 46 seconds, continuously rotates.

Likewise, individuals from the dawn of history have played their roles as actors of the universe. Their role in life corresponds to that of Antonio in Shakespeare's play, a role which has been played repeatedly by each succeeding generation of players. THOUGH INSIGNIFICANT

...our roles may seemingly be, there is a distinction in each performer, setting and story. Every minute feature and peculiarity adds variety to this drama. The tone of the player's voice...the shade of the stage curtains...the sequence of events...alters the importance of the incidents.

THUS AMIDST

...a dull setting of grey, tar-papered barracks...sandy and gravel roads...desolate firebreaks...we follow the identical pattern of life—the journey to work, meeting of friends, spare time chores, and the chimes of dinner bells from day to day. But, the enchantingly majestic Castle Rock...the picturesque and characteristic Abalone...the compelling beauty of the distant snow-capped mountains...stand symbolic of future aspirations... WITH

...evacuation, new acquaintances, harvest festival, hard water problem marking the progress of our first year...shell-flower making, adult education, public schools, loyalty question climaxing our second year...segregation, Japanese school, morning calisthenics, "bozar-atama" characterizing our third year...this melodrama prolongs.

THESE PASSING EVENTS

...are but imitations of the happenings occurring in some decade or century. But novel is this setting...momentous this story...talented are the per-

Departmentally Speaking.....



Construction

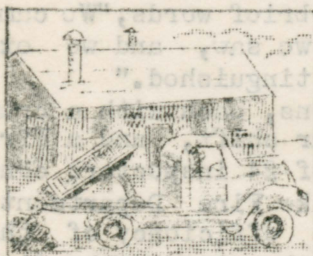
Construction of the all-important colony irrigation system, cold storage warehouse, project jail and colony dispensary projects are some of the major tasks undertaken by the Engineering Section of the Operations Division.

When the project irrigation system is placed into service this spring, it will provide water principally for garden and landscaping use for the entire center with the exception of Blocks 79, 80 and 84 which are located at the highest point of the project.

Next in line of major projects is the cold storage warehouse operated by Mess Operations. The now 40 by 90 feet refrigerated warehouse has been combined with the original cold storages, and it now has twice the refrigeration capacity.

The project jail has been built entirely of reinforced concrete and steel. Its six cells, four for men and two for women, are each equipped with four steel folding beds, a toilet and a lavatory. An exercise room and shower-bath is also provided for both the men's and women's wards. Included in the fire-proof jail are two large rooms for office space and a kitchen. The outer concrete walls of the structure are 8 inches thick, the inner walls 6 inches. The roof and floor are 5 inches thick.

Other buildings under construction or near completion are the kitchen addition of the hospital, funeral parlor, and the administrative offices near the Post Office. The 20 by 100 feet funeral parlor, which will include a columbarium and office space, will be located near the cemetery.



Maintenance

Approximately 835 workers are employed in the Maintenance Unit which includes fuel distribution, garbage disposal, janitorial services and supplies, refrigeration, plumbing, repairing of build-

ings, maintenance of water pumps and sewage, and other public utilities.

Temporary jobs were given to 125 men by the colony-wide roof repairing project managed by the unit. Coal distribution is another important task under the Maintenance Unit.

The seven pumps maintained by this unit provide the project with an average of 1,750,000 gallons of water per day.



Farm

One thousand two hundred and thirty eight acres of rich organic soil were tilled for the purpose of supplying fresh vegetables to the residents of Tulare Lake. From 386 acres of truck crop,

a total of 4,388,469 pounds of vegetables; an estimated evaluation of \$150,000 were harvested during the year, but none was sent to other centers--all being either stored or consumed here.

In field crop production, 580,215 pounds of grain valued at \$9000 were produced from 550 acres of barley and oats while 300 acres of foliage crop gave \$5000 worth of cutting.

During harvest season approximately 400 workers were under the farm payroll. These workers will report to work in late spring when operation gets under way.

Although the soil condition is reputed as one of the best in the country, the fact that no fruit-bearing vegetables can be grown due to early frost and a short growing season of about 80 days (only root and field crops can be grown satisfactorily) prevents full exploitation of the area.

The livestock section this year abandoned hog breeding altogether and concentrated its entire effort in fattening feeder hogs. During the January-December period this year, a total of 1259 hogs were slaughtered. The total dressed weight was 310,343 pounds with an estimated value of \$68,000.

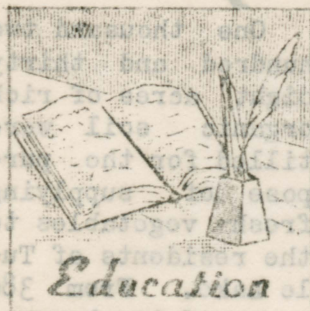


Colonial Peace

The Peace Office, starting out anew after the disbandment of the old police force in July, has built up its force to 160 at present with 97 per cent of the blocks represented.

Although neither the board of directors nor the wardens have ever had experience as police officers prior to evacuation, the Peace Office has tried with untiring effort to maintain peace and order in the community. As a further handicap, the department has always found itself in a delicate situation in comparison with other departments, but by adopting the policy that the residents should be self-governed as much as possible, they held foremost the aim toward the establishment of confidence and goodwill with the community.

Departments (CONT'D)



Education

"East is east and west is west; never the twain shall meet" ...so says Kipling. But here in Tule Lake the "twain" in a sense do meet. The east and the west have partly united to inculcate upon the

student of perspicacity the learnings of both the land of their heritage and the land of their birth...an unique opportunity offered by the public and the Japanese language schools.

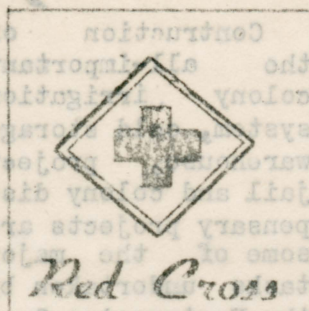
The three established Japanese schools, the Chuo Kokumin, Dai Towa Juku, and Nippon Kokumin have attending a total of 5355 students. With branches of these three parent schools dispersed in all corners of the camp, both young and old, school children and workers, are enabled to attend classes at their convenience and to begin mastery of the complexities of their parents' native tongue. To aid in this achievement 160 teachers recruited principally from the Issei and Kibei group are retained by the parents of language school pupils.

The public school system is composed of the four pre-schools, two elementary and a high school staffed with 55 Caucasian teachers with a few score evacuee teachers to alleviate the teacher dearth.

Two hundred and thirty two children from three to five years of age go to the pre-schools with some 919 pupils attending the two elementary schools. Here children are taught the fundamental "readin', writin' and 'rithmetic" amidst pleasant surroundings contrasting greatly with their drab barrack homes. These youngsters after a half day session at the public school go to Japanese school for an hour or two before their day's schooling is completed.

At the high school, programs and classes are arranged to enable those who wish to go to Japanese language schools to do so. Enrolled are 1344 regular students and 224 special students with an undetermined number of postgraduates. The Tri-State High School has graduated this year 353 students who have satisfactorily met the four-year curricula requirements for graduation--which do not differ greatly from the "outside".

All in all, one evinces the major role that the Japanese school plays in the lives of many--which, in a corner of this type may be said to be inevitable. Their influence is omnipresent and is manifest in the "bozu" pig-tails, and early morning calisthenics. School children from five to adults of 44 attend classes--which, by the way are not compulsory--in the mornings, afternoons, or evenings and the homework received is labored over in whatever leisure that is theirs...whether it be at home, at work, or at school.



Red Cross

Organized on Sept. 1, 1942, the Tule Lake Red Cross Chapter opened its doors at 3001 with 27 members. Primarily under the Social Welfare, the Red Cross has since then emerged as an independent organization with 1239 members and has established its headquarters at 716-A.

Activities under this organization are numerous and varied. Its major accomplishment this year was the raising of \$2285.11 in the fund drive held in March. Another of its activities is the supervision of the Home Service, First Aid, Production, and Junior Red Cross departments. Home Service handles correspondence with the Japanese Red Cross and since April 1944 has sent 2389 Red Cross messages (Form 1616) and has delivered 1629 such messages from Japan to individuals in Tule Lake. Cablograms, inquiries and matters concerning servicemen also come under Home Service. First Aid has contributed First Aid emergency kits to each block and fire stations and the Production department has knitted voluntarily 398 sweaters which were distributed to indigent center residents. The Junior Red Cross has also been active.

Striving always to better the organization are the cabinet officers, board of directors, and the various department heads who are the backbone of the Red Cross and who have struggled unselfishly to make what the Red Cross is today.

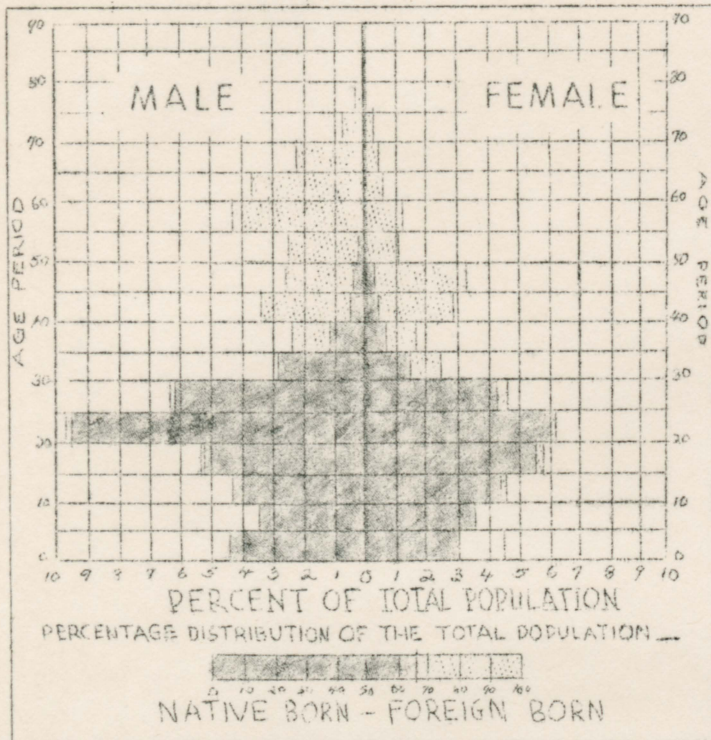


Extinguishing 37 fires during the last year with a minimum loss of \$1404, the Fire Department can summarize its one year activities in the brief words, "We came, we saw, and we extinguished."

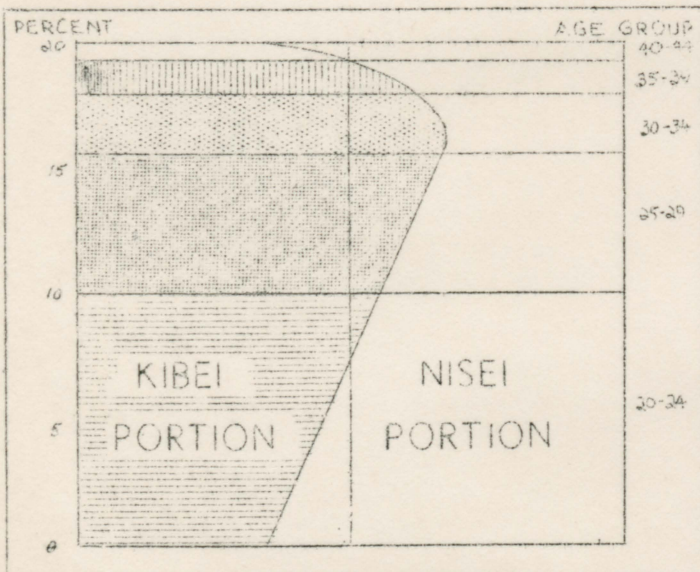
Three fire stations, each with a crew of nine on a 24-hour shift, and a Fire Prevention Bureau of 24 inspectors constitute the Tule Lake Fire Department. Much credit for the efficiency of the whole department can be given to the fire inspectors in performing faithfully their preventive duties by calling attention to all fire hazards.

During Fire Prevention Week, the department appeared in the community spotlight with public demonstrations, which not only thrilled the spectators but acquainted them with the various means of individual fire-fighting. With the exception of an unfortunate accident early this spring when the No. 2 engine turned over en route to a call from Block 73, the Fire Department closed a very commendable year.

Statistically Speaking



(A) AGE DISTRIBUTION CHART
TULE LAKE 1944 (Percent)



(B) THE 20-40 AGE GROUP
PROPORTION OF TOTAL POPULATION

	J	F	M	A	M	J	J	A	S	O	N
BIRTHS	31	39	32	44	36	45	50	44	36	39	48
DEATHS	13	5	10	6	13	4	5	8	5	5	12
EXCESS	18	34	22	38	23	41	45	36	31	34	36

Comparative Birth and Death Rates
per 1000 population

	Tule Lake 1944	Continental U. S. 1940
BIRTHS	23.7	17.9
DEATHS	4.6	10.8
EXCESS	19.1	7.1

(C) MONTHLY DEATH AND BIRTH RATES
TULE LAKE 1944

All of us have been latently curious to get a general idea of the statistical components of the population of this center. And those of us in the younger set especially have had frequent occasions to speculate upon the ratio of men to women in the "eligible" age group as a passing subject of conversation.

A partial answer to this general curiosity can be found in the set of comprehensive data prepared by the project statistics section. Viewing first from the overall perspective, it may be noted that an age distribution chart representing the Japanese in this country follows a "Christmas tree" pattern in contrast to the pyramid shape of age distribution charts for normal communities. This peculiarity is directly attributable to the abnormal circumstances surrounding the period of immigration which necessitated late marriages for most of the early immigrants; the result being the present gap in the 30-40 age group which would otherwise have been balanced by the top age bracket of the second generation group. The Immigration Act of 1924 is another causal factor no less significant. The Tule Lake population follows this pattern but owing to the large influx of unattached Issei and Nisei males during Segregation, the "Christmas tree" pattern itself is further distorted to the left as can be seen in Chart A.

Reverting again to the man-to-woman ratio, a census taken in June, when the population here was pretty well stabilized, revealed that the fellows in the 22-24 age group are the most handicapped as there are only 7 girls to 11 fellows. Fellows in the ages of 20 and 21 find the situation a bit more helpful since there are 2 girls to 3 boys in the 20 age group, and 3 girls to 4 boys in the 21 age group.

Another characteristic of the population no less significant is the large number of Kibei fellows. To illustrate the numerical weight of the Kibeis particularly in the 20-40 age group, a segment of the age distribution chart has been blown up in Chart B. It can be seen that the Kibei majority is more evident in the 30-40 age group than in the younger group. A study of some 1000 Kibei males in this center further revealed that speaking in terms of averages, a typical Kibei fellow is 26 years old, having returned to this country at the age of 17 after nine years of formal schooling in the course of a 12-year stay during his most formative years. The study further revealed that 68% of them are single.

Chart C showing the year's vital statistics is self-explanatory, but it is significant to note the comparative figures with the Continental U.S. as of 1940, the latest available figures.

Historically Speaking.....

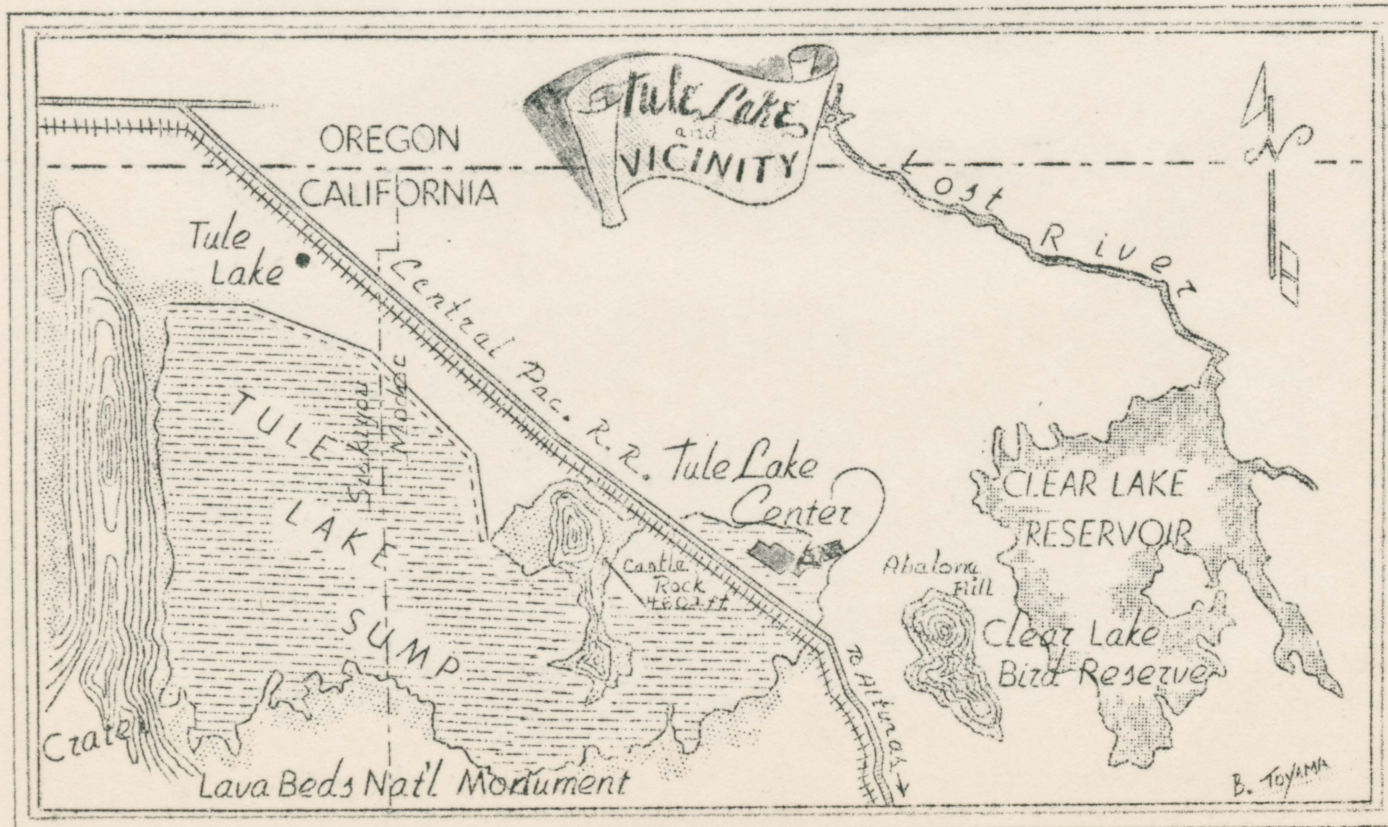
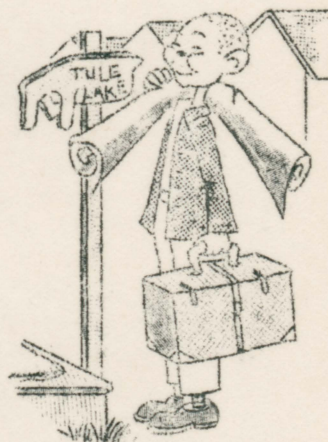
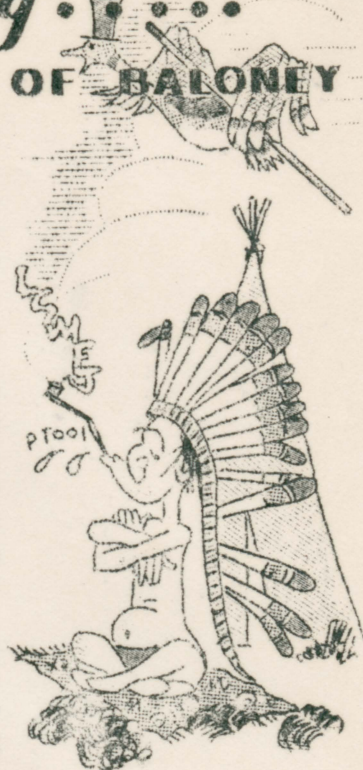
..... WITH A BIT OF BALONEY

Many, many years ago...so the story goes, "Tule Lake used to be underwater.." Well, the story might end here too, since we have learned that a good deal of the land we live on today has been underwater at one time or another. But there's something notable about this place in that the water-lines of the original inland sea are clearly marked on the neighboring hills. Since fossils picked up in the vicinity tell us that the climate here was once tropical, we can let our imagination run around a bit and envisage Ally Oop making love to his cave-gal Oola under a mango tree one sultry moonlit night in 1,000,000 B.C.

Probably he was riding around in a hopped-up dinosaur to bring his gang out to the sea for a day of fishing and boating....maybe dropping off on Castle Rock island for a fish bake with the gang. But it seems that a violent volcanic explosion blow hell out of this prosaic prehistoric life, and by the time the volcanic ashes settled down, a river (now Klamath River) had formed and was carrying away all the sea water to the ocean.

After a few thousand years of historical obscurity, there appeared from nowhere a new band of people called Indians. The story becomes more familiar to us from this point as it deals quite a bit with a lot of blood-curdling war hoops and scalped heads.

After all said and done, a collection of historical interests remain in the Tule Lake of today including the "Petroglyphs" or Stone Writings, the Lava Beds, Castle Rock, the Ice Caves, "Captain Jack's Stronghold" historical scene of the Modoc Indian Wars and Flooker's Chimneys-outlets of one of the most recent lava flows in the U. S.



"Please Understand"...

December 17, 1943

Dear Masao, I really hesitate to write this letter, but I'm impelled to do so to be honest with you and myself. In this letter I want to tell you everything. I shall recount from the start and will try my best to tell nothing but the truth. To begin with, I really did fall hard for you when you first started paying attention to me. I think it started when you told me something about the author of "Keys of the Kingdom" which my friend back home had just sent me. There was something about the way you spoke that made me feel that your whole being was concentrated on telling me what you knew of the author. I could not escape that warm grasp of sincerity in your voice. Then followed several other conversations as the days went by and each time I felt that I cared for you more and more. Somehow you were different from the rest of the fellows. You talked of more sensible subjects and after each conversation, it seemed that my mind was introduced to things that I had not been conscious of before.

Then one evening you asked me to visit the new community library with you, but for some reason or another I refused. (I think I told you that I had something to do that night.) Two days later you asked me to go to the show with you but again I refused. Soon after, you abruptly left me and whenever we ran across each other you seemed indifferent and stiffly polite. I was really hurt then. I wrote in my diary, ".....I've made Masao angry at me. I really care for him and want to be good friends with him, but I just can't get the courage to go out with him.....I shall never forget the two weeks I've known him."

But the time I was really hurt was when I saw you at the concert in Block 6 with Setsu. That night I came home and cried my heart out, and it was only by sheer stubborn pride that I managed to smile at you when you came over the next day to borrow the catalog. It seemed that from then on you tried to do everything to hurt me. I really thought that I could hate you when George offered to take Mitsue and me to the river one Sunday, and a half an hour later came back and told me that he couldn't take us. I knew instinctively that you were behind it. I really looked forward to going with you fellows then. George came to apologize the next morning but I didn't have it in for him as much as I had it in for you. You'll never know what I went through that summer, Masao. I did everything I could to forget you; even to the extent of hurting Sam. (Even now I can't look him straight in the eye.) I often wondered if other girls could just forget a thing like this.

Then all of a sudden, just before segregation, you came back to me. I couldn't understand it at all, and when you told me that you had something to make up with me, I was really angry. I didn't want to be pitied. For a long time after that I kept thinking to myself that you were just feeling sorry for me. That is why there was that barrier between us which you always mentioned. Finally that one night I yielded to you and confessed that I loved you, and as I wept shamelessly on your shoulders, I tried to cry out all the regurgitating recollections of my past anguish.

Soon afterwards mother called me aside and cautioned me about being seen too often with you since you were going away soon. Mother kept telling me that if you had any serious intentions about me, you wouldn't be so nonchalant when your departure was so near. That is the real reason why I refused to go out with you so often, but it seemed that my feeling was too coarsened by then to be hurt when I saw you once again with another girl.

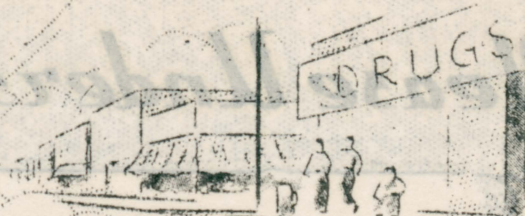
Now you are in Tule Lake and I am still in Rohwer. On the eve of your departure, I promised you that I would wait. I can still say honestly that I love you, but I do not know if I love you enough to marry you. Masao, I want to break that promise I made. I know I am a coward, but I just can't see things your way. Please don't be angry with me, Masao, and for the sake of both of us, please do try to understand. Masao, I can't and don't want to love a man I cannot trust.

Always,

Fumi

TORMENT

A PRE-EVACUATION STORY



Sunday afternoons usually found Fred enjoying the fraternal company of his cronies at the corner drug store, or at the neighboring pool hall, but on this particular Sunday afternoon he was quite busy in his study completing a long procrastinated term paper. And owing to the substantial racket made by his wreck of a typewriter, he was quite unconscious of a sudden commotion at the front door, which all began when his father answered a loud and impatient knocking, only to be deluged with a torrent of incoherent words by a highly excited little boy.

"You shuah my wife, boy?" Fred's father asked brokenly for the third time. Though comprehending little of the young informer's narration, he had surmised that something had happened to his wife. A stupefying fear chilled him and then froze him into stubborn incredulity. He hadn't ever seen the child much less known him, and the thought that this child could know his wife was utterly beyond his fear-stricken mind.

"Hones' mister! It was her....I know her real good....she always says 'hello' t'me....an once she brung me here an' gave me cookies....Gee mister, she was hurt bad."

The child was quite vehement in his confirmation.

For a long while Fred's father stared blankly at the child's animated eyes which expressed at once eager sincerity and embarrassed perplexity. Suddenly the thinning integument of his disbelief snapped, and the naked horror of his wife's tragedy stared into his eyes. In a hypnotic stupor he thanked the child, closed the door, and walking into his son's study exclaimed hoarsely, "Fred! Mamma run over by automobile!"

And that was Fred's first knowledge of the tragedy which so abruptly shattered the hitherto undisputed tranquility of his life.



Things came to a head one day, when a neighbor notorious for her outspokenness took hold of him and said, "Fred, can't you at least look sad?"

To this Fred retorted with an explosive temper rarely seen, "Goddammit! can't you leave me along with my own grief!"

No, she could not leave him along with his own grief, nor could the others about him. They bled his torn heart still more. They asked him if he had prayed to God for his dying mother. They asked him questions which in themselves branded him as being inhuman without tears or sentiment. They sued him for the sentimentalities with which they had manifested their own sympathies for his mother. But Fred was not an actor. He could not shed tears, nor contort his face in grief for their approbations. He was only able to be himself....a fellow with an innately dispassionate temperament not given to express outwardly his emotions. And because he was himself, he suffered the torments of those sentimental creatures who so unjustly laid claims for what he did not, and could not give.

The next hour, the next day, the next night, and the next week were all telescoped into Fred's mind as a single nightmare recollectible only in drunken precision....the hurried call to the hospital....the long and lonely vi-

THE END



Many many moons ago, a trio of Chinese scholars delving into the realms of divination published the result of their findings. Derived from their research is a host of fortune-telling schemes among which is the following zodiac so commonly accepted in the East. This zodiac has 12 divisions, each represented by an animal, and revolves in a 12-year cycle. For instance, if you were born in 1921 this is your year since 1945 is the year of the Tori. Rest of the divisions follow in sequence.

However, before commencing with the forecasts, we ask the readers to take the following with a grain of salt for we too keep hearing that refrain, 'It ain't necessarily so.' Yes, when that old feeling hits you, forget this zodiac business and follow the dictates of your old stand-by--the heart.



TORI--Ruling the Year 1945 is Tori. People born during this year are prone to take a cursory view of life; possess a keen eye for skilled craftsmanship. An artistic attainment is foreseen if effort is concentrated.



INU--Rather a familiar facsimile hereabouts but this deals strictly with the animal universally known as man's best friend. These men and women are adaptable to professions that require little cooperation from others; tend to lean toward the introvert side. They are extremely positive. They make loyal friends, bitter enemies.



INOSHISHI--Like their namesake, persons born during this year are distinguished by their intense practicability. Liable to become hard and ruthless unless this practical trait is counterbalanced by development of other sides of their nature. They are extremely independent, and a word to the wise--don't ever try to make up an 'Ino' man's mind.



NEZUMI--It's funny how a namesake holds true--men and women dominated by the Mouse are usually quiet, hospitable, friendly to others. A habit of thriftiness promises adaptability as a good businessman. And to the males we knock our hats--he's got a good outlet to that 'What are you--a man or a mouse?' remark.



USHI--Persons falling under this category are faithful, honest, and patient--sort of a 'salt-of-the-earth' type. Though unspectacular in action, by their patience and endurance very likely to succeed.



TORA--These individuals have the inclination to reach whatever goal they set forth to accomplish. Vigorous and always on the go, they prove to be good leaders. On the debit side: a weakness for wine, women, and song. All in all very desirable characteristics in whatever occupation they may choose.



USAGI--Quiet, calm, and collected are those who came into the world under the sign of the Rabbit. A slight tendency toward shirking their duties, but with the help of others, they may be prosperous. Rather well-liked by his companions; they are modest and retiring, seem as a rule to be born to serve.



TATSU--Possessor of courage, resourcefulness, and action plus, they prove to be energetic workers. Once they start for a goal they see it through to the end come hell or high water; by hook or crook. Adaptable to line of work that demands courage, they sometimes show signs of stubbornness.



MI--If ever a namesake seems unfortunate, this is it. Those who saw the light under the sign of the Snake are noted for their benevolence and ability to hold their tongue. They are usually endowed with wealth, and this is fascinating, the majority of the women are gifted with unusual beauty and elegance. And it's written in the books that the male sex is somewhat on the suspicious side.



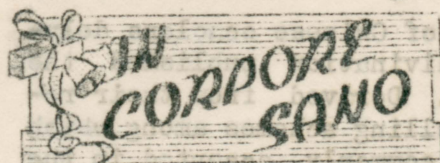
UMA--People born under the sign of the Horse are likely to be changeable, vain, fickle, and pleasure seeking. They become alternately highly elated and deeply depressed; easy to befriend and just as easy to forget. As a general rule, they will and should make 'hay' before reaching middle age, since their guiding star commences to decline after that period.



HITSUJI--Artistic minded are the men and women born under the sign of the Sheep. Though gifted with resourcefulness, they are sensitive and this quality may make them a prey to outside influence.



SARU--We now wonder how they ever credited this animal as speaking no evil, hearing no evil, and seeing no evil. Perhaps there are many many kinds of monkeys. Those born under this sign are gifted with eloquence, and therefore somewhat socially well-known. They have very positive likes and dislikes. Also a habit of currying favors with their superiors.



By Sat MuneKawa

"Mens sana in corpore sano"...A sound mind in a sound body.

AS WE THUMB through the NEWELL STAR files of the past 11 months, we can visualize the panorama of sports that unfolded here in 1944 -- basketball which inaugurated the 1944 sports program and also concluded the year's activities; softball, which attracted the largest number of participants; baseball, which ruled as the King of Sportsdom; the numerous minor athletics, which provided many hours of enjoyment during the 12 months. It was our pleasure to record these events. Now, as we usher in the New Year, the staff looks forward to serving you again with added zest and zeal.

WHAT WILL THE New Year bring? A look into the future and we find...

FIRST TO BE billed on the 1945 calendar is the all-day table tennis tourney of Jan. 14. Through the instrument of segregation, the center lost its ace in P. A. Shibata but gained many top-ranking paddle wielders from the various centers. Perhaps all arguments relative to the center king will cease with this tourney.

ON JAN. 21, the silence which now pervades the girl's sport front will be broken when the fens take to the hoop courts. Brownies (Flashette plus Don Juan combination) will, in all probability, dominate the girls' league because of their potent scoring power but don't sell hospital, the defending champ, short. Other sextettes vying for the crown will be Hinodettes, Block 80, Teensters, Nine Pins and White Mists.

INDEPENDENT CASABA TEAMS will also be springing in to action soon.

...AND THUS THE cavalcade of sports continues -- softball, boxing, baseball, judo, sumo, weightlifting...

SPORTS

TABLE TENNIS TOURNEY SET FOR JAN. 14 IN GYM

The true champ of the paddlewielders in boys singles, boys doubles and girls singles divisions will be unearthed when the center table tennis tourney takes place on Jan. 14, according to Tad Nakagiri, Youth Social head.

Entries in the three divisions may be made from Jan. 2 until 12 noon on Jan. 12 at 901-C, 4708-D,

1408-D and the high school office.

This sports event is being sponsored by the Youth Social, and Playground Dept. of the CA Section.

In the last ping pong tourney, which was held here in April 1943, P. A. Shibata, who no longer resides in this center, copped top honors in a field of 32 entries.

THE SEINEN DAN HOOP RESULTS...

The Zephyrs gained complete revenge for the reverse they suffered at the hands of Okole House earlier in the year when they copped the Seinen Dan Class A trophy on the night of Dec. 17 at the expense of the Seagulls (former Okole House team). However, the Zephyr victims were accorded some measure of consolation as their brother quintet, the Seahawks, conquered the Moonshiners, 34 to 26, in the Class B finals.

The Zephyrs had no difficulty surviving the first round as they eliminated the Pacers, 56 to 35. In the other opening round game, the Seagull casaba squad trimmed the Mustangs, 41 to 39. Inasmuch as there were only four contenders for the Class A trophy, the first round victors were automatically in the finals.

Forward Hitoshi Ota's 20 points turned the tide for the Zephyrs in the finale. Zephyrs' Forward Fred Harada contributed seven field goals for 14 points while on the losing side, it was Center Yosh Aoki who was high scorer with 11.

In the Class B division, going into the finals, the Seahawks and Moonshiners had each won three cage brawls. The Seahawks conquered the Panthers, 35 to 23, Unknowns, 39 to 29; Cardinals, 42 to 32; while

the Moonshiners chalked up victories over Loafers, 47 to 32; Ryuseis, 32 to 23; Travelers, 27 to 26.

The two undefeated contenders provided a bruising battle in the final B contest of the tournament. They were locked in a cage duel that was so intense that at halftime, neither quintet was ahead. The score was tied at 14-all.

But in the final half the winners routed their opponents, scoring 20 points to assure themselves of a hard-earned triumph as well as the trophy.

DEC. 10

Ryuseis-37; Ramblers-24
Wildcats-36; Greyhounds-21
Unknowns-37; Damedas-14
Kyodais-22; Hinodes-18

DEC. 11

Moonshiners-47; Loafers-32
Travelers-29; Waves-26
Cardinals-27; Alaska AC-16
Pacers-35; Bruins-30

DEC. 12

Seahawks-35; Panthers-23
Seagulls-41; Mustangs-39
Zephyrs-56; Pacers-35

DEC. 13

Seahawks-39; Unknowns-29
Pacers-31; Wildcats-28
Moonshiners-32; Ryuseis-23
Cardinals-37; Kyodais-17

DEC. 14

Travelers-31; Pacers-29
Seahawks-42; Cardinals-32

DEC. 17

Moonshiners-27; Travelers-26
Zephyrs-41; Seagulls-34
Seahawks-34; Moonshiners-26

Class A tilts are underlined.

WARD CASABA OF 1944

The regular 1944 casaba season made its debut on October 21, when Ward II and Ward V started on their scheduled games. Seven wards participated in the Ward loops. Ward VII's lone team was Block 66, which competed in Ward IV.

Analyzing each ward in numerical order we find:

WARD I

The powerful Block 5 aggregation coped the stiffly contested Ward I diadem rolling through their eight-game schedule sans a loss. The flag-winners were hard-pressed all the way by second place Block 17 squad, which experienced but one setback. Incidentally, Block 17 rang up a tremendous 125 pointers at winless Block 6's expense. Ned Madda hit the hoop for a sizzling 76 markers in this game.

TOP THREE TEAMS IN WARD I

Team	W	L	Pct.
Block 5.	8	0	1.000
Block 17.	7	1	.875
Block 14.	6	2	.750

WARD II

Living up to pre-season expectations, the potent Block 38 gang powerhoused their way through all opposition for an undefeated untied season. Block 25, which claimed the runner-up slot in the loop, were given a rough 59 to 24 bouncing by the champs, when the two squads met in a melon duel. Hitoshi Ota was the big gun for the Block 38 outfit.

TOP THREE TEAMS IN WARD II

Team	W	L	Pct.
Block 38.	7	0	1.000
Block 25.	6	1	.857
Block 29.	5	2	.714

WARD III

Block 34, claimants of the Ward III title, breezed through their schedule with seven straight wins. It was Block 34's 41 to 25 victory over the hapless Block 31 boys on Nov. 14 that clinched the crown. At scheduled season's finish, the titlists were three full games ahead of their nearest rivals.

TOP THREE TEAMS IN WARD III

Team	W	L	Pct.
Block 34.	6	0	1.000
Block 23.	4	2	.667
Block 32.	4	3	.571

WARD IV

Proving to be one of the most hotly contested loops, three teams had a mathematical chance at the flag near the season's end. When the final smokes cleared away, Block 12 walked off with the coveted pennant. Block 21 and Block 19 settled as co-holders of second place, Block 20 handed the leaders their sole setback of 36 to 21, on Nov. 19.

TOP THREE TEAMS IN WARD IV

Team	W	L	Pct.
Block 12.	7	1	.876
Block 21.	6	2	.750
Block 19.	6	2	.750

WARD V

Pro-season favorites, Block 46 had a relatively easy time in taking possession of the Ward V diadem. On Nov. 11, Block 46 trounced the hitherto undefeated Block 45 lads, 46 to 25, to put the title on ice.

TOP THREE TEAMS IN WARD V

Team	W	L	Pct.
Block 46.	7	0	1.000
Block 45.	5	1	.833
Block 40.	2	2	.500

WARD VI

Tucking 9 triumphs under their belt, Block 50 cagers literally ran away with the Ward VI pennant. Closest rivals, Block 49, were outpointed to the tune of 26 to 20, when the two main squads clashed on Nov. 26.

TOP THREE TEAMS IN WARD VI

Teams	W	L	Pct.
Block 50.	9	0	1.000
Block 49.	6	1	.875
Block 51.	5	2	.714

WARD VIII

Scrappy Block 82 outfit finished at the top of the heap in Ward VIII when they met and won over the heretofore undefeated Block 78, 26 to 10. The smooth casaba handlers of Block 84 gave Block 82 their closest encounter, succumbing only by a margin of one basket.

TOP THREE TEAMS IN WARD VIII

Teams	W	L	Pct.
Block 82.	5	0	1.000
Block 78.	4	1	.800
Block 84.	5	2	.714

CHAMPIONSHIP SERIES...

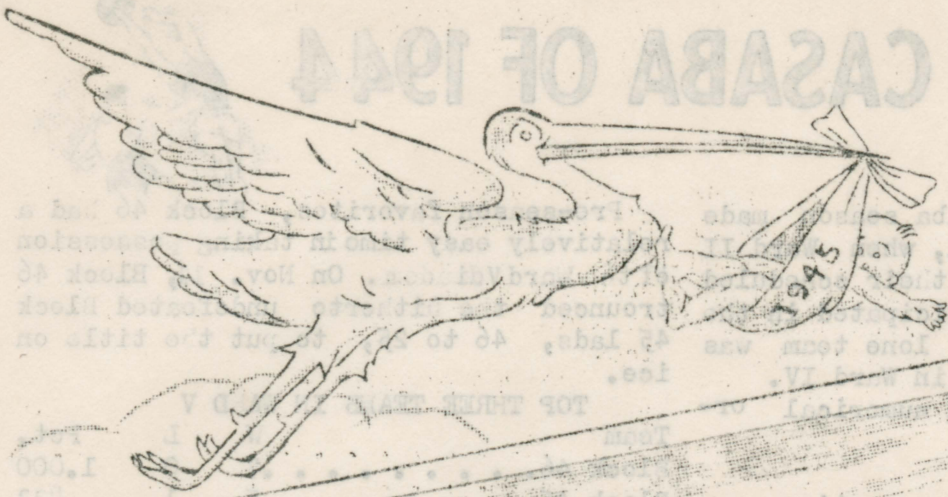
Power-laced Block 38 cagers were crowned Center Ward Champions on December 10, after registering a 31 to 27 close over the Block 46 fivesome, in the finals of the elimination series.

Forward Fred Harada paced his squad with a cool 15-point performance. Block 46, minus their star pivot man, George Goto, managed to press the champs through-out the fracas. Mas Miyamura accounted for 10 points. Halftime score was 16 to 12, with Block 38 on the long end.

Semi-finals were held on the preceding day with Block 5 matching buckets with Block 46 and Block 12 pitted against Block 38. In the former game, Block 46 raked up 41 digits to Block 5's 31. Losers' Tom Kiyama was high point man with 15 points while George Nakagaki plunked in 12 counters for the winners. Block 5 had one point advantage at halftime. In the second game, Block 12, work down, 36 to 32, against Block 38's scoring machine. The winners were forced to play all out in the second half, for the halftime score favored Block 12, by five digits. Hitoshi Ota of the winners and losers' Mits Ota hit the loop for 15 and 13 points, respectively.

Blocks 82, 50 and 34 were eliminated in the initial tilts of the series. Block 66 forfeited to Block 38.

WARD CASABA OF 1944



TULE LAKE CENTER

WARD V
Block 12.
Block 21.
Block 19.
TOP THREE TEAMS IN WARD IV
setback of 76 to 21, on Nov. 19.
Block 20 handed the leaders their sole all point in the series.
time score favored
ies. Mitchell Out of the winners and 10-
Pet. 17, 18, 19, 20, 21, 22, 23, 24, 25, 26, 27, 28, 29, 30, 31, 32, 33, 34, 35, 36, 37, 38, 39, 40, 41, 42, 43, 44, 45, 46, 47, 48, 49, 50, 51, 52, 53, 54, 55, 56, 57, 58, 59, 60, 61, 62, 63, 64, 65, 66, 67, 68, 69, 70, 71, 72, 73, 74, 75, 76, 77, 78, 79, 80, 81, 82, 83, 84, 85, 86, 87, 88, 89, 90, 91, 92, 93, 94, 95, 96, 97, 98, 99, 100, 101, 102, 103, 104, 105, 106, 107, 108, 109, 110, 111, 112, 113, 114, 115, 116, 117, 118, 119, 120, 121, 122, 123, 124, 125, 126, 127, 128, 129, 130, 131, 132, 133, 134, 135, 136, 137, 138, 139, 140, 141, 142, 143, 144, 145, 146, 147, 148, 149, 150, 151, 152, 153, 154, 155, 156, 157, 158, 159, 160, 161, 162, 163, 164, 165, 166, 167, 168, 169, 170, 171, 172, 173, 174, 175, 176, 177, 178, 179, 180, 181, 182, 183, 184, 185, 186, 187, 188, 189, 190, 191, 192, 193, 194, 195, 196, 197, 198, 199, 200, 201, 202, 203, 204, 205, 206, 207, 208, 209, 210, 211, 212, 213, 214, 215, 216, 217, 218, 219, 220, 221, 222, 223, 224, 225, 226, 227, 228, 229, 230, 231, 232, 233, 234, 235, 236, 237, 238, 239, 240, 241, 242, 243, 244, 245, 246, 247, 248, 249, 250, 251, 252, 253, 254, 255, 256, 257, 258, 259, 260, 261, 262, 263, 264, 265, 266, 267, 268, 269, 270, 271, 272, 273, 274, 275, 276, 277, 278, 279, 280, 281, 282, 283, 284, 285, 286, 287, 288, 289, 290, 291, 292, 293, 294, 295, 296, 297, 298, 299, 300, 301, 302, 303, 304, 305, 306, 307, 308, 309, 310, 311, 312, 313, 314, 315, 316, 317, 318, 319, 320, 321, 322, 323, 324, 325, 326, 327, 328, 329, 330, 331, 332, 333, 334, 335, 336, 337, 338, 339, 340, 341, 342, 343, 344, 345, 346, 347, 348, 349, 350, 351, 352, 353, 354, 355, 356, 357, 358, 359, 360, 361, 362, 363, 364, 365, 366, 367, 368, 369, 370, 371, 372, 373, 374, 375, 376, 377, 378, 379, 380, 381, 382, 383, 384, 385, 386, 387, 388, 389, 390, 391, 392, 393, 394, 395, 396, 397, 398, 399, 400, 401, 402, 403, 404, 405, 406, 407, 408, 409, 410, 411, 412, 413, 414, 415, 416, 417, 418, 419, 420, 421, 422, 423, 424, 425, 426, 427, 428, 429, 430, 431, 432, 433, 434, 435, 436, 437, 438, 439, 440, 441, 442, 443, 444, 445, 446, 447, 448, 449, 450, 451, 452, 453, 454, 455, 456, 457, 458, 459, 460, 461, 462, 463, 464, 465, 466, 467, 468, 469, 470, 471, 472, 473, 474, 475, 476, 477, 478, 479, 480, 481, 482, 483, 484, 485, 486, 487, 488, 489, 490, 491, 492, 493, 494, 495, 496, 497, 498, 499, 500, 501, 502, 503, 504, 505, 506, 507, 508, 509, 510, 511, 512, 513, 514, 515, 516, 517, 518, 519, 520, 521, 522, 523, 524, 525, 526, 527, 528, 529, 530, 531, 532, 533, 534, 535, 536, 537, 538, 539, 540, 541, 542, 543, 544, 545, 546, 547, 548, 549, 550, 551, 552, 553, 554, 555, 556, 557, 558, 559, 560, 561, 562, 563, 564, 565, 566, 567, 568, 569, 570, 571, 572, 573, 574, 575, 576, 577, 578, 579, 580, 581, 582, 583, 584, 585, 586, 587, 588, 589, 590, 591, 592, 593, 594, 595, 596, 597, 598, 599, 600, 601, 602, 603, 604, 605, 606, 607, 608, 609, 610, 611, 612, 613, 614, 615, 616, 617, 618, 619, 620, 621, 622, 623, 624, 625, 626, 627, 628, 629, 630, 631, 632, 633, 634, 635, 636, 637, 638, 639, 640, 641, 642, 643, 644, 645, 646, 647, 648, 649, 650, 651, 652, 653, 654, 655, 656, 657, 658, 659, 660, 661, 662, 663, 664, 665, 666, 667, 668, 669, 670, 671, 672, 673, 674, 675, 676, 677, 678, 679, 680, 681, 682, 683, 684, 685, 686, 687, 688, 689, 690, 691, 692, 693, 694, 695, 696, 697, 698, 699, 700, 701, 702, 703, 704, 705, 706, 707, 708, 709, 710, 711, 712, 713, 714, 715, 716, 717, 718, 719, 720, 721, 722, 723, 724, 725, 726, 727, 728, 729, 730, 731, 732, 733, 734, 735, 736, 737, 738, 739, 740, 741, 742, 743, 744, 745, 746, 747, 748, 749, 750, 751, 752, 753, 754, 755, 756, 757, 758, 759, 760, 761, 762, 763, 764, 765, 766, 767, 768, 769, 770, 771, 772, 773, 774, 775, 776, 777, 778, 779, 780, 781, 782, 783, 784, 785, 786, 787, 788, 789, 790, 791, 792, 793, 794, 795, 796, 797, 798, 799, 800, 801, 802, 803, 804, 805, 806, 807, 808, 809, 810, 811, 812, 813, 814, 815, 816, 817, 818, 819, 820, 821, 822, 823, 824, 825, 826, 827, 828, 829, 830, 831, 832, 833, 834, 835, 836, 837, 838, 839, 840, 841, 842, 843, 844, 845, 846, 847, 848, 849, 850, 851, 852, 853, 854, 855, 856, 857, 858, 859, 860, 861, 862, 863, 864, 865, 866, 867, 868, 869, 870, 871, 872, 873, 874, 875, 876, 877, 878, 879, 880, 881, 882, 883, 884, 885, 886, 887, 888, 889, 890, 891, 892, 893, 894, 895, 896, 897, 898, 899, 900, 901, 902, 903, 904, 905, 906, 907, 908, 909, 910, 911, 912, 913, 914, 915, 916, 917, 918, 919, 920, 921, 922, 923, 924, 925, 926, 927, 928, 929, 930, 931, 932, 933, 934, 935, 936, 937, 938, 939, 940, 941, 942, 943, 944, 945, 946, 947, 948, 949, 950, 951, 952, 953, 954, 955, 956, 957, 958, 959, 960, 961, 962, 963, 964, 965, 966, 967, 968, 969, 970, 971, 972, 973, 974, 975, 976, 977, 978, 979, 980, 981, 982, 983, 984, 985, 986, 987, 988, 989, 990, 991, 992, 993, 994, 995, 996, 997, 998, 999, 1000