

關東地震災畫報

第二輯

EARTHQUAKE PICTORIAL EDITION

PART TWO

大阪每日新聞社發行

PUBLISHED BY

THE OSAKA MAINICHI

關東地震災畫報

第二輯

EARTHQUAKE PICTORIAL EDITION

PART TWO

大阪每日新聞社發行

PUBLISHED BY

THE OSAKA MAINICHI

關東震災畫報第二輯目次

- 一 帝都の燒跡御巡視の攝政宮殿下
- 二 帝都の燒跡御巡視の攝政宮殿下
- 三 帝都の燒跡御巡視の攝政宮殿下
- 四 山本内閣の叙任と辭令、參謀本部内の關東戒嚴司令部
- 五 東京日日新聞社露臺より見た銀座方面の燒跡
- 六 鐵骨を残して焼失した永代橋
- 七 國技館跡の麻布第三聯隊第二大隊本部、深川區萬年町附近、洲崎附近、本所區押上町附近
- 八 一部の燒失で災危を免がれた日銀本行、三越英服店の燒跡
- 九 食糧配給車を取り圍む罹災者
- 一〇 燒失した帝國大學圖書館
- 一一 求援電報の受附を開始した東京丸之内郵便局の混雜
- 一二 飲料水の配給を待つ罹災者
- 一三 や、整理された神田區須田町
- 一四 帝國學士院長穗積博士罹災者の子供に訓話を爲す、罹災者の子供を集めた野天の學校
- 一五 路上に商品を列べた鍋釜屋、塵埃よけのマスク賣り、假小屋の西洋料理店、銀座尾張町の西瓜店
- 一六 淺草觀音堂の床下住ひの罹災者、同上境内の食糧配給
- 一七 バラックの建造を急ぐ日比谷公園と芝公園
- 一八 日比谷公園内の避難小屋
- 一九 工兵隊に依りて修理中の厩橋と舊神田橋跡
- 二〇 龜戶驛の機關車の殘骸、倒壞の龜戶天神境内の石燈籠
- 二一 芝浦で便船を待つ避難者
- 二二 大宮驛に殺到した避難者
- 二三 野毛山より見たる横濱市の慘狀（二枚續き）
- 二四 飛行機から見た横濱市の一部と同埠頭
- 二五 飛行機から見た横濱市の一部と同埠頭
- 二六 魚エ、化した横濱山下町の避難者
- 二七 焼け残つた横濱驛の大混雜
- 二八 バラック内で報告聴取の野原日横須賀鎮守府司令長官、倒壞した横須賀鎮守府司令部
- 二九 横須賀鎮守府軍需部裏の山崩れ、潰滅した横須賀市街
- 三〇 満目荒涼たる横須賀市の慘狀
- 三一 山崩れの爲め埋没した横須賀市街の一部、燒失した横須賀市街
- 三二 無残に破壊された浦賀ドック
- 三三 鎌倉御用邸の倒潰
- 三四 山門のみを残して倒壞した圓覺寺、倒壞した建長寺
- 三五 地震の爲め落ち込んだ鎌倉の大佛
- 三六 大磯附近に於ける列車の顛覆
- 三七 橋脚のみを残した馬入川の渡船場
- 三八 海嘯に襲はれた伊東町
- 三九 海嘯で市街の中央に押し上げられた漁船
- 四〇 特務艦室戸の救恤品積込み

CONTENTS PART II

1. The Prince Regent inspecting the destroyed capital.
2. The Prince Regent visiting devastated areas.
3. The Prince Regent on an inspection tour.
4. Improvised official gazette, and headquarters of martial law forces.
5. Fire-destroyed Ginza viewed from the roof of the Tokyo Nichi-Nichi.
6. Iron skeleton of Eitai Bridge.
7. Temporary Headquarters of the Azabu 3rd Battalion in the National Stadium; Fukugawa slums; Vicinity of Honjo.
8. Bank of Japan partially destroyed; Mitsukoshi Department Store burned down.
9. Refugees flocking around food carts.
10. Library of the Imperial University.
11. Central Post Office first opened for S.O.S. telegrams.
12. Refugees standing in line for drinking water
13. Suda-cho, Kanda, partially restored.
14. Open-air school for refugee children. Prof. Dr. Hozumi, addressing some of the children.
15. Sale of daily necessities on the pavements.
16. Refugees living in the ground structures of the Asakusa Kwannon Temple.
17. Barracks hastily put up in Hibiya and Shiba Parks.
18. Refugees' shanties in Hibiya Parks.
19. Umayabashi and Kanda-bashi being repaired by army engineers.
20. Remnants of freight cars and stone lanterns in Kameido station and shrine.
21. Refugees waiting for steamers at Shibaura.
22. Refugees rushing to Omiya station.
- 23 } View of devastated Yokohama, seen from the top of Noge hill.
- 34 }
25. Part of Yokohama city and pier seen from the sky.
26. Refugees in Yamashita-cho, Yokohama.
27. Congestion at Yokohama Station, which was partially burned down.
28. Commander of Yokosuka Garrison receiving reports; Yokosuka Garrison Headquarters collapsed.
29. Landslide in Yokosuka; destruction of Yokosuka streets.
30. Devastation of whole city of Yokosuka.
31. Yokosuka streets buried by landslides; Yokosuka wiped out by fire.
32. Uraga docks utterly destroyed.
33. What happened to Imperial villa at Kamakura.
34. Two famous Kamakura temples collapsed, leaving only the gates intact.
35. Famous Kamakura Daibutsu partially sunken into the ground.
36. Trains turned turtle near Oiso.
37. Ferry at Ba-nyu river, connecting with passenger trains on Tokaido line.
38. Town of Ito invaded by tidal wave.
39. Fishing boats washed up into the midst of a town.
40. Shipping relief supplies by the special service ship Muroto, I.J.N.



(淺湯ニ相内藤後で園公野上) 下殿宮政攝の視巡御を跡燒の都帝
(るさ召聞を明説らか監總視警)

H. I. H. The Prince Regent hearing reports at Ueno Park from Home Minister Viscount Goto and Chief of Metropolitan Police Yuusa, during his inspection tour over the devastated Capital.



(るらせら渡を橋本日) 下殿宮政攝の視巡御を跡焼の都帝
H. I. H. The Prince Regent inspecting the devastated regions in Tokyo (Crossing Nihonbashi)



(下殿が上馬面正) 下殿宮政攝の視巡御を跡焼の都帝日五十月九

H. I. H. the Prince Regent visiting the devastated areas of the capital on September 15, 1923. The prince is seen on horseback (side-view).

參謀本部内の關東戒嚴司令部

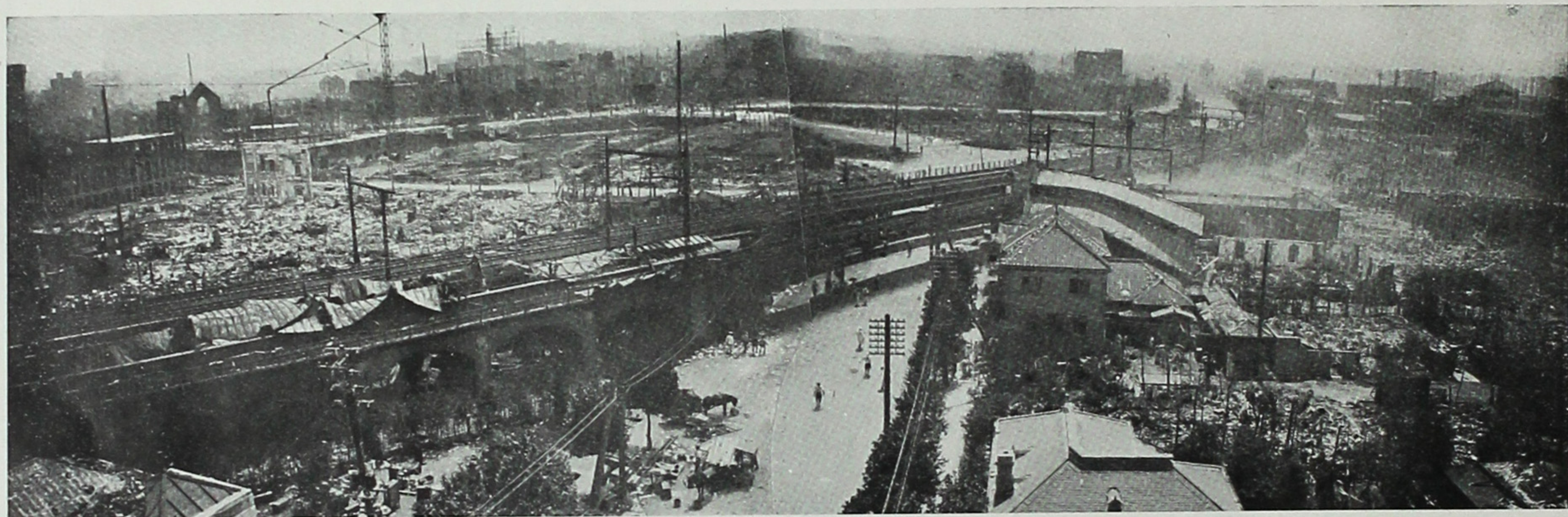


官報 號外
 大正十二年九月二日
 敘任及辭令
 海軍大將正三位勳一等功一級伯爵山本權兵衛
 任内閣總理大臣
 内閣總理大臣海軍大將正三位勳一等功一級伯爵山本權兵衛
 兼任外務大臣
 從二位勳一等子爵 後藤新平
 任内務大臣 井上準之助
 正五位勳二等
 任大藏大臣 井上準之助
 陸軍大將從三位勳一等功二級男爵田中義一
 任陸軍大臣 田中義一
 臺灣總督正三位勳一等男爵田健治郎
 任農商務大臣兼司法大臣 大卷毅
 正三位勳一等
 任逓信大臣兼文部大臣 山之内一夫
 正四位勳二等
 任鐵道大臣 山之内一夫

山本内閣の叙任と辭令

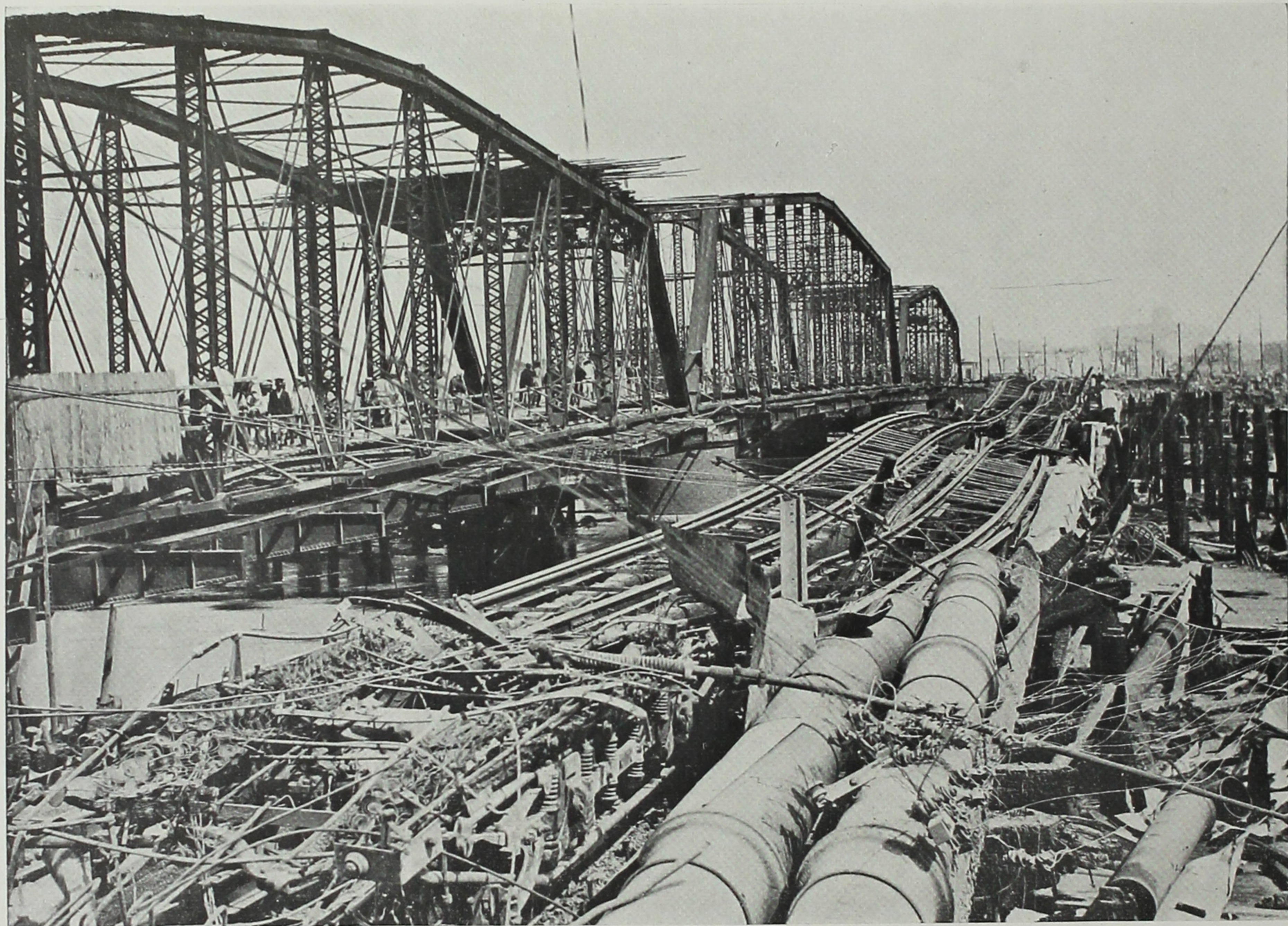
(九月八日大阪府廳へ達したる刷り局焼失のため)
 (内閣官房で謄寫版にて紙刷に刷つた官報號外)

Fig. 1: Improvised Official Gazette, containing the appointment of Premier Count Yamamoto and other members of the Cabinet. The mimeographed gazette reached the Osaka Prefectural Government on September 8, 1923, six days after it was issued in Tokyo.



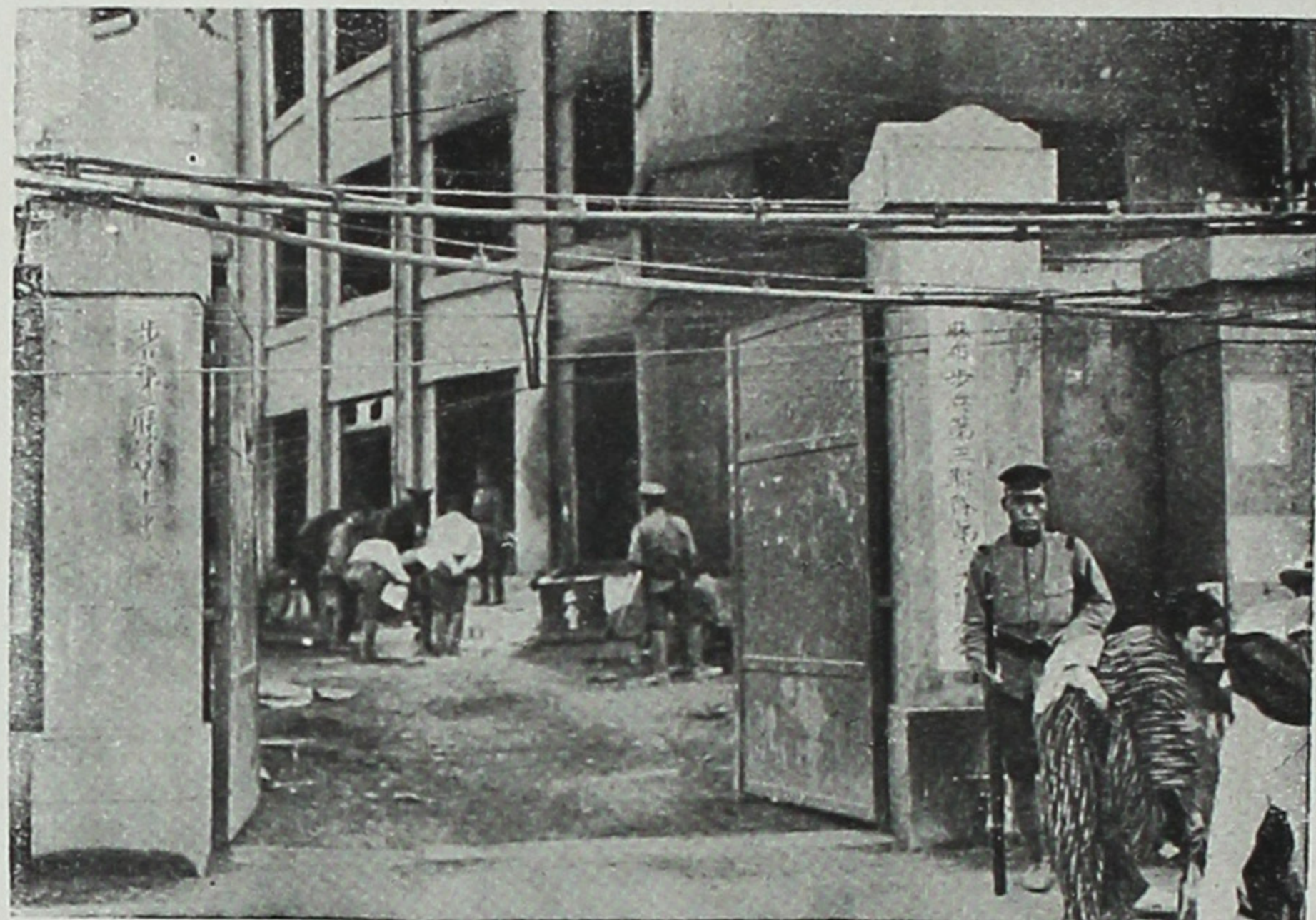
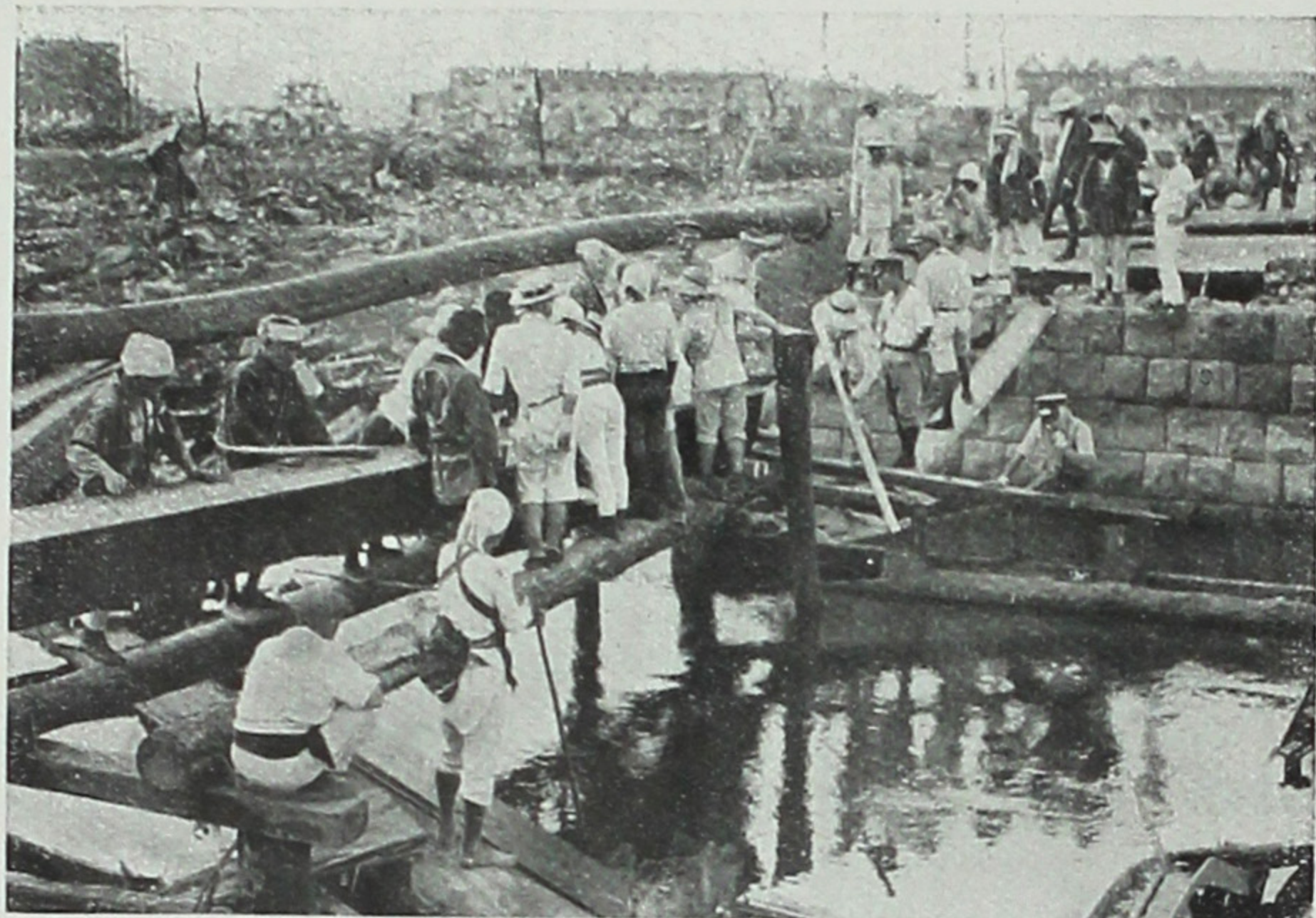
跡焼の面方座銀るた見りよ臺露社聞新日日京東

Desolation of Gi-za quarter, once the fashionable shopping centre in Tokyo, as seen from the roof-garden of the Tokyo Nichi Nichi Shimbun.



(市京東) 橋代永たし失焼てし残を骨鐵
Famous Eitai Bridge and water mains after earthquake and fire (Tokyo)

洲
崎
附
近



國技館跡の麻布第三聯隊
第三大隊本部

本
押
所
上
町
區
附
近



深
川
年
町
區
附
近

Upper left : Vicinity of Susaki, Fukagawa.
Lower left : Vicinity of Oshia e-cho, Honjo.

Upper right : Headquarters of Third Battalion of Azabu Third Regiment, at
the remains of National Wrestling Amphitheatre.
Lower right : Vicinity of Mannen-cho slum, Fukagawa



一部の焼失で災厄を
免かれた日本銀行



三越呉服店の焼跡

Upper: The Bank of Ja San, partially destroyed by fire.
Lower: People searching for valuables among the ashes and debris of the Mitsukoshi department store.



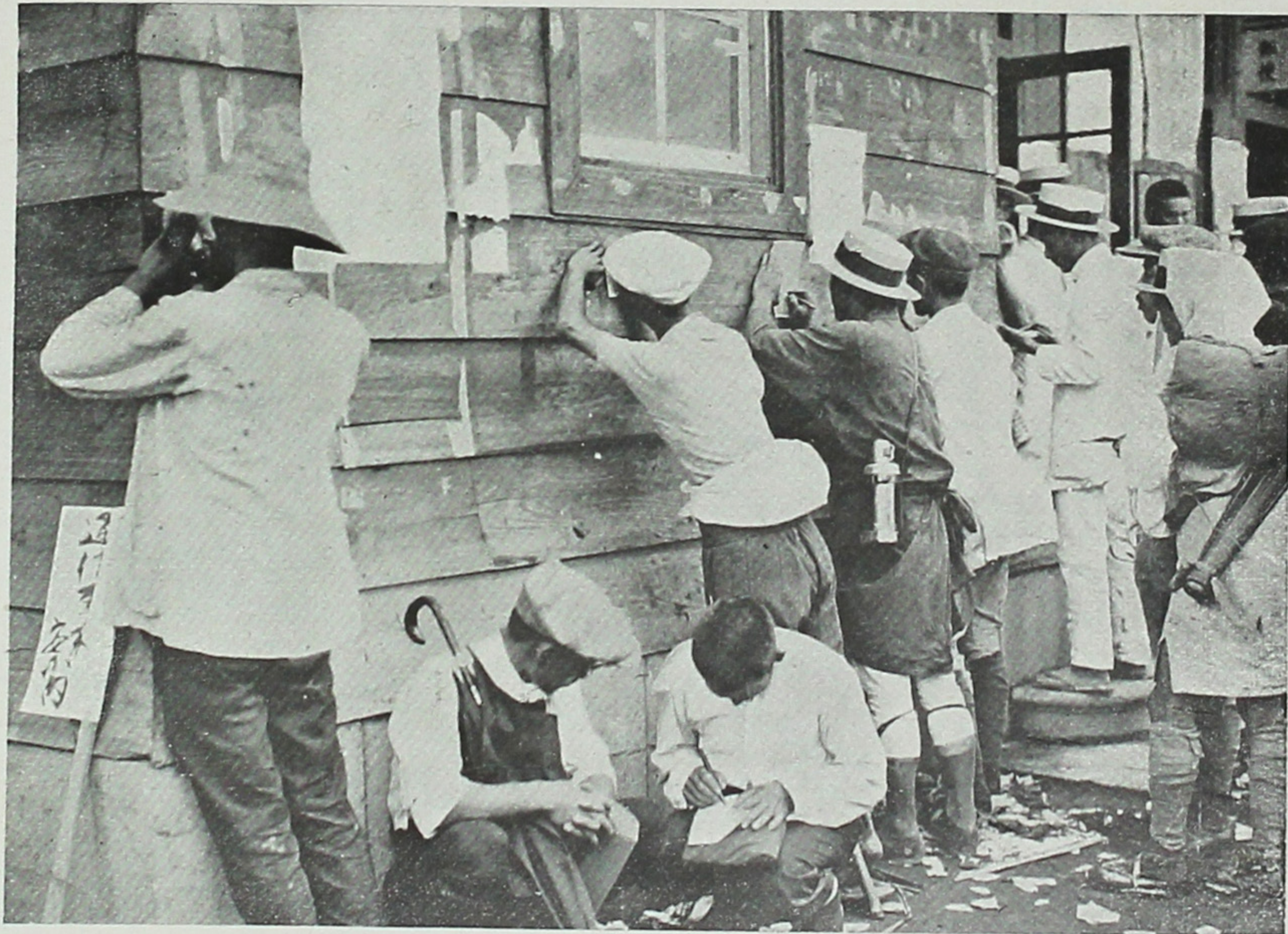
(失焼に共も書藏の重貴の卷萬十七) 館書圖學大國帝たし失焼

The Tokyo Imperial University library, which was burned down. It contained more than 700,000 rare volumes, some of which no amount of money could buy.



Refugees flocking around food distribution cars.

食糧配給車を取り圍む罹災者



救
援
電
報
の
受
付
を
開
始
し
た
る
東
京
丸
の
内
郵
便
局
の
混
雑

Congestion at Maruro-uchi Post Office, when first opened for receiving S. O. S. telegrams from the public.



飲料水の配給を待つ罹災者（深川区伊勢崎町附近）



Refugees forming water-lines in the vicinity of Isezaki-cho, Fukagawa ward, Tokyo.



町田須區田神たれさ理整 > や

View of Suda-cho, Kanda ward, Tokyo, fairly on the way to restoration.

上野公園美術學校内の松林で罹災者の子供
四百餘名を集めて開かれた野天の學校



帝國學院院長穂積陳重氏が罹災者
の子供に向つて訓話をする爲



Left: Open-air school in the pine forest of the Fine Arts School, Ueno Park, attended by about 400 refugee children
Right: Dr. Nobushige Hozumi, President of the Imperial Academy, addressing the children gathered in the open-air school

假
小
西
井
屋
料
理
の
店



路
上
に
商
品
を
列
べ
た
屋

銀
座
西
尾
張
瓜
町
の
店



塵
埃
よ
け
の
賣
り

Upper left: European cook-house in a shanty.
Upper right: Kettles and other kitchen utensils sold on the pavements.

Lower left: Water melon shop in Owari-cho, Ginza Tokyo.
Lower right: Selling sanitary masks.

淺草觀音堂境内の
食糧配給

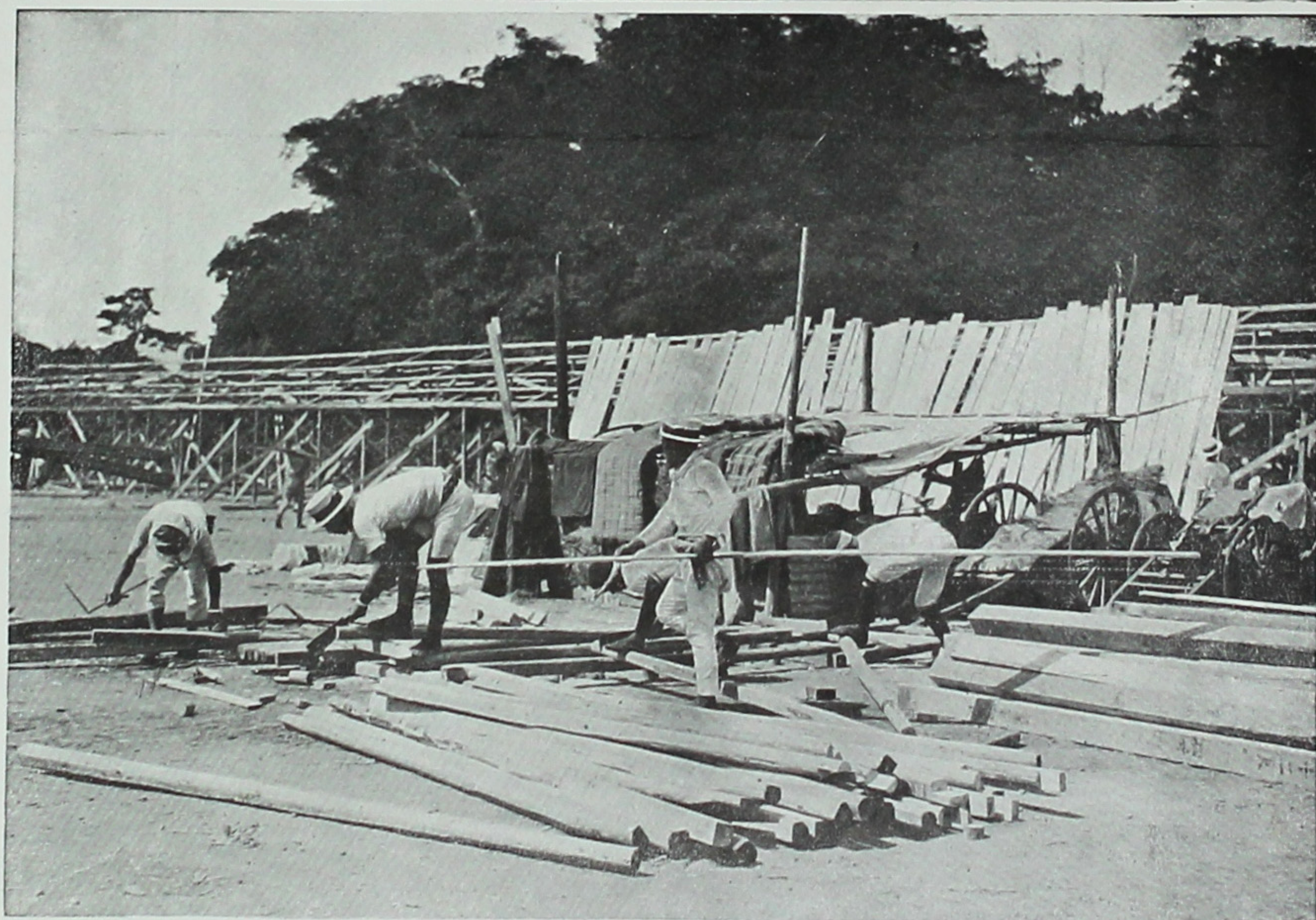
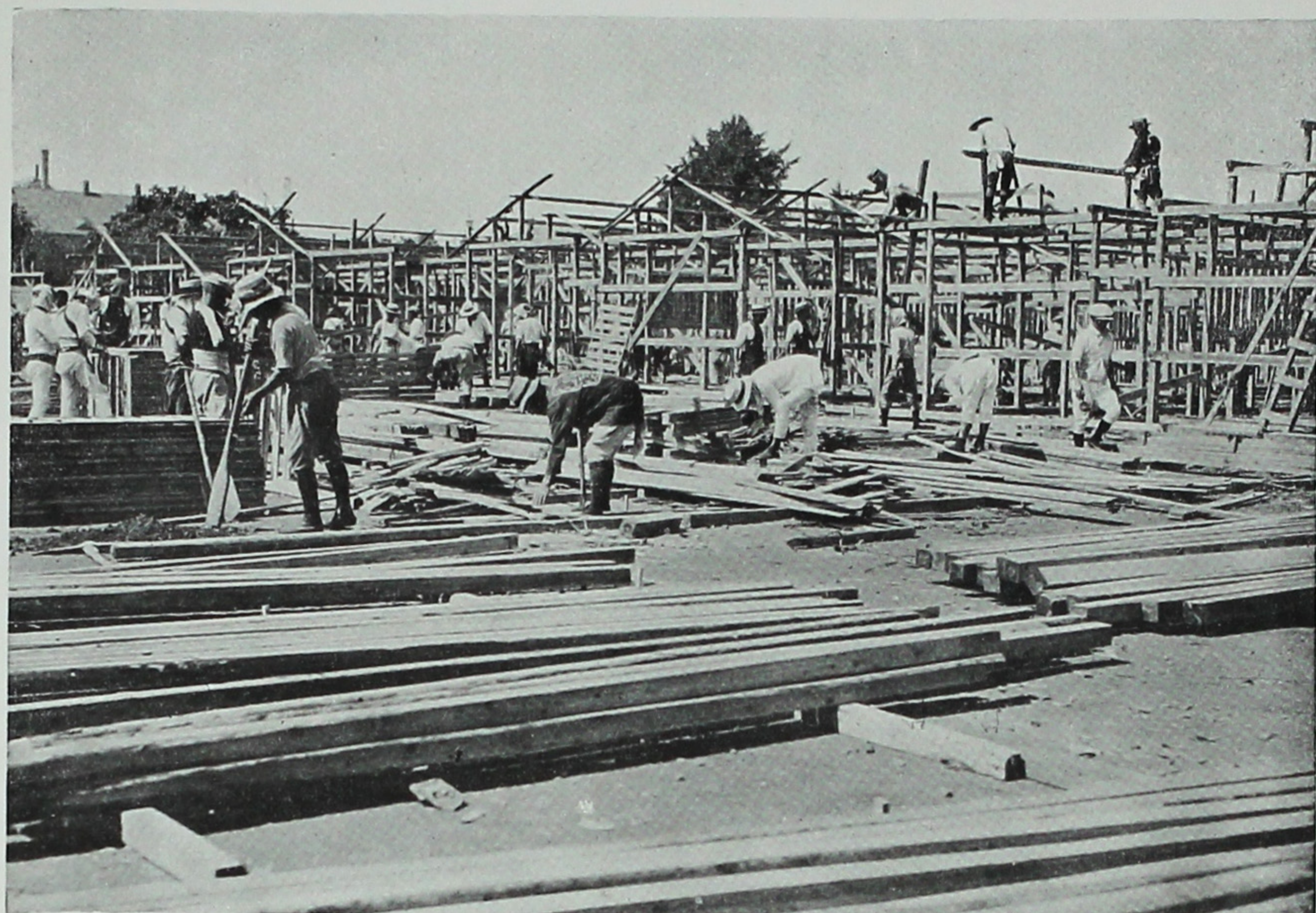


Left: Food distribution in the precinct of Asakusa Kwannon Temple.

淺草觀音堂の床下住ひの
罹災者

Right: Refugees living in under-structures of Asakusa Kwannon Temple. Note doves also hungry.





ハ
ラ
ツ
ク
の
建
造
を
急
ぎ
つ
つ
あ
る
日
比
谷
公
園
と
芝
公
園

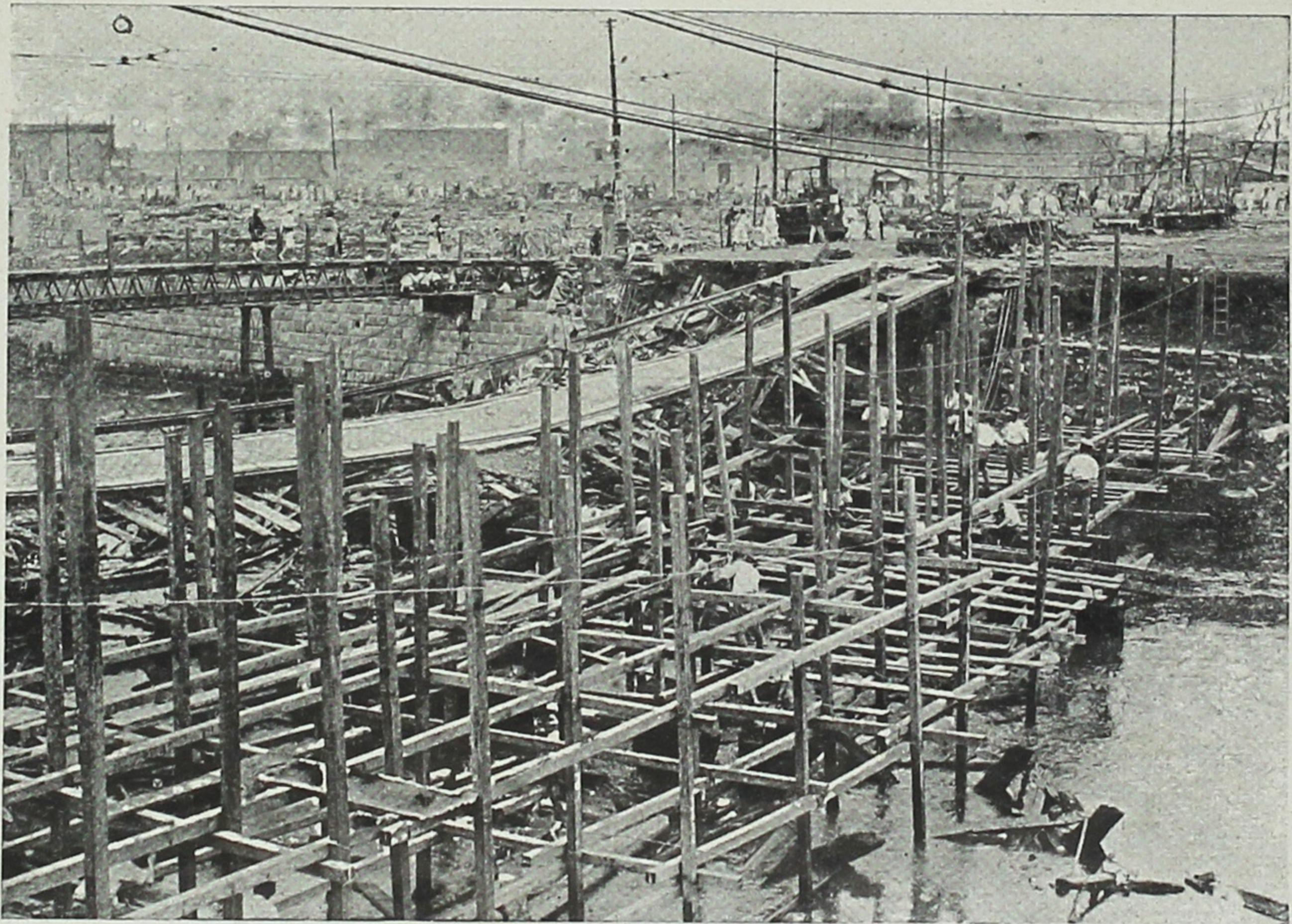
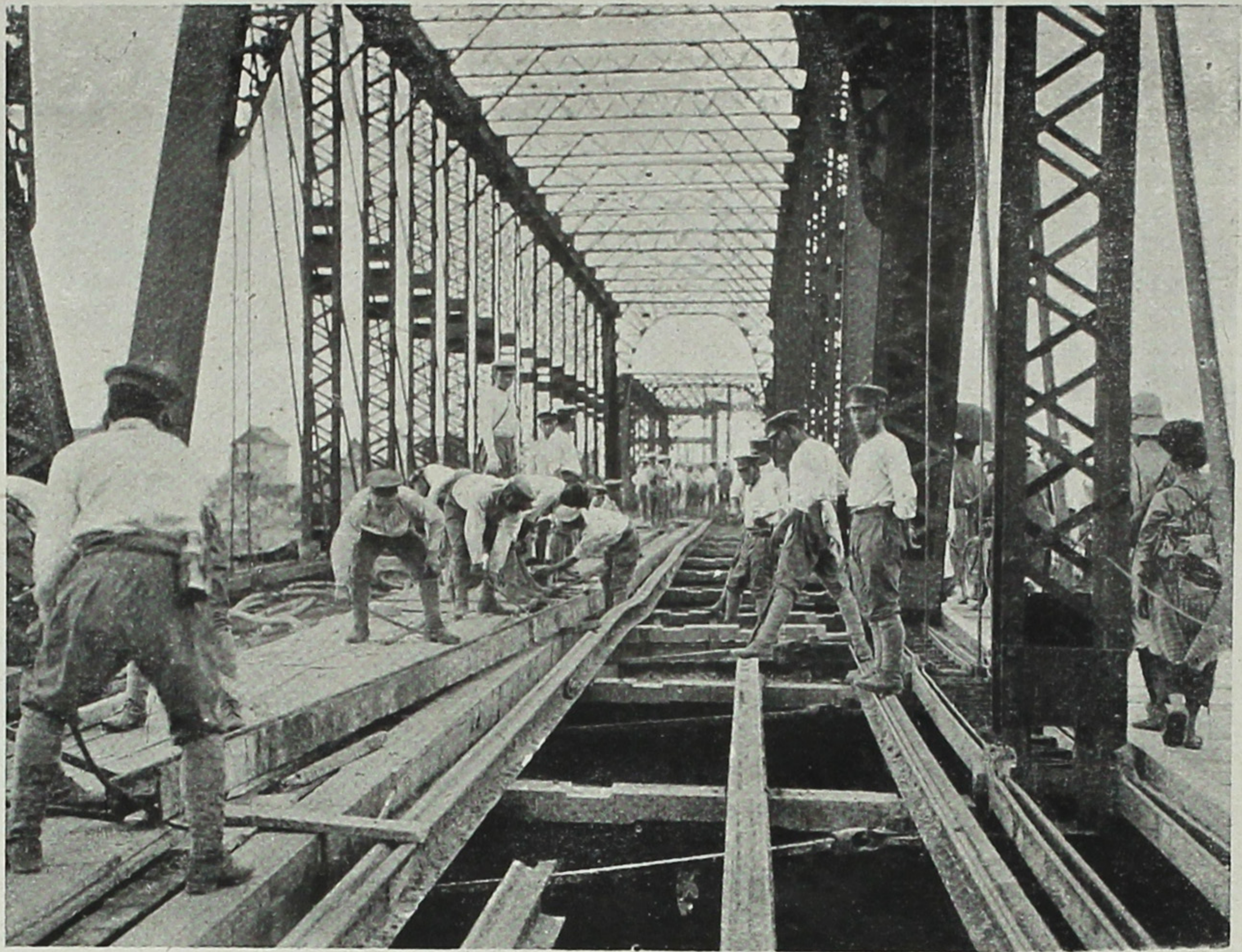
Barracks being hastily put up at Shiba and Hibiya parks.



日比谷公園内の避難小屋（東京）



Barracks hastily put up in Hibiya Park to house the homeless refugees.



工兵隊に依て修理中の腐橋と舊神田橋跡(東京)

Above : Umaya-bashi (bridge), Tokyo, being repaired by army engineers.
Below : Kanua-bashi as it looked after the earthquake. A temporary bridge had to be built.



龜井戸驛に於ける貨車の残骸



倒壊した龜井戸天神境内の石燈籠

Upper : Skeletons of freight cars at Kameido Station, near Tokyo.
Lower : Collapsed stone lanterns at Tenjin Shrine, Kameido, near Tokyo.



者 難 避 つ 待 を 船 便 に 浦 芝

Refugees waiting at Shira-ura, Tokyo, for steamers to take them to safer places.



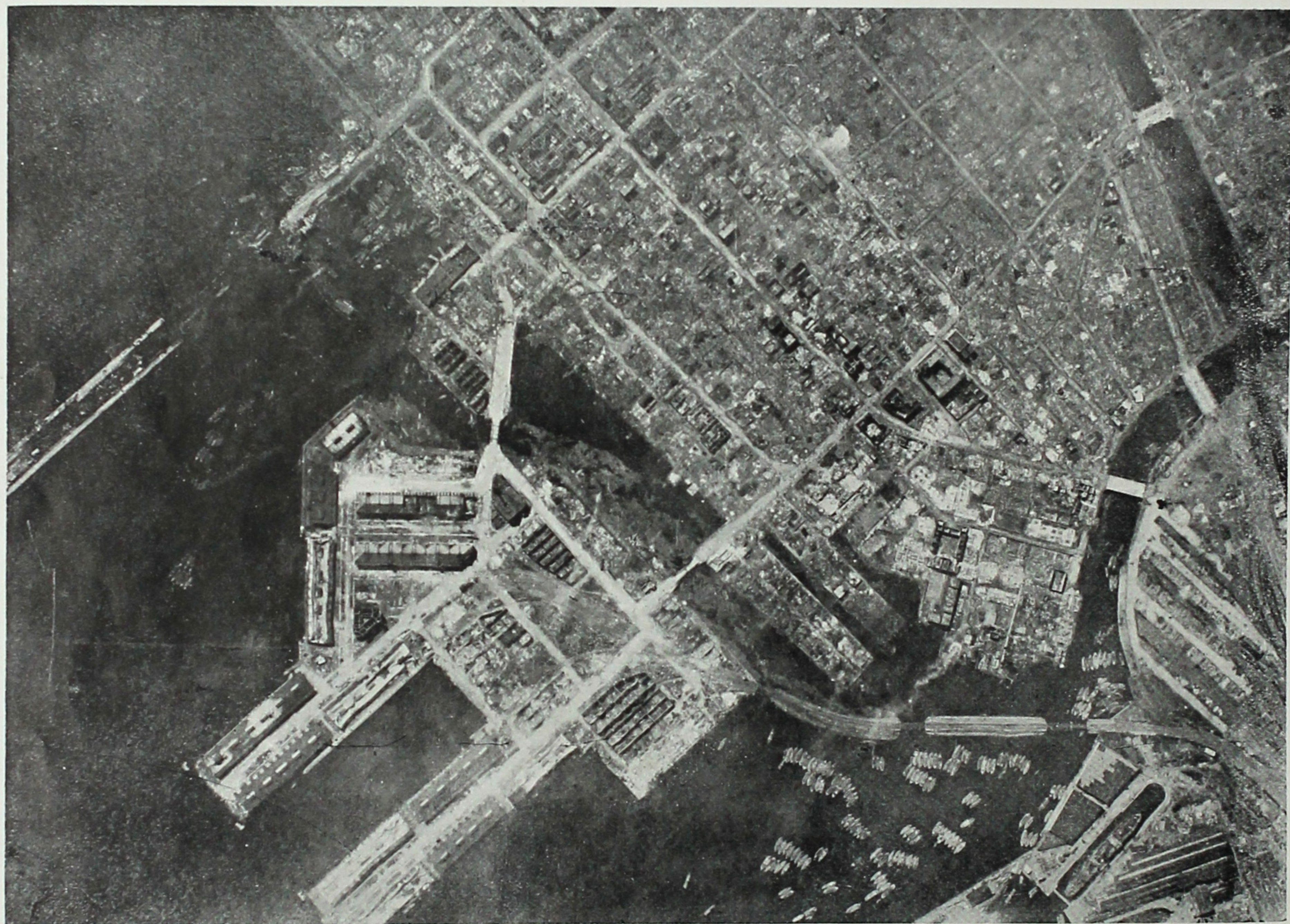
大宮驛に殺到した避難者

Refuges loading trains at Omiya station, Tohoku line.



(す化と土焦市全) 狀 慘 の 市 溜 横 る た 見 り よ 山 毛 野

Desolation wrought all over Yokohama, as seen from the hilltop of Noge-yama, situated in the northwestern part of the city.



頭埠同と部一の市濱横た見らか機行飛

Bird's-eye view of a part of the City and pier of Yo'kohama completely dest oyed.



者難避の町下山濱横たし化と土焦

Refugees waiting for relief in Yamashita-cho, Yokohama, formerly the quarter housing most of the flourishing foreign firms, now turned into a desert.



雑混の驛濱横たつ焼け残

Confusion at Yokohama station, which was partially burned down.

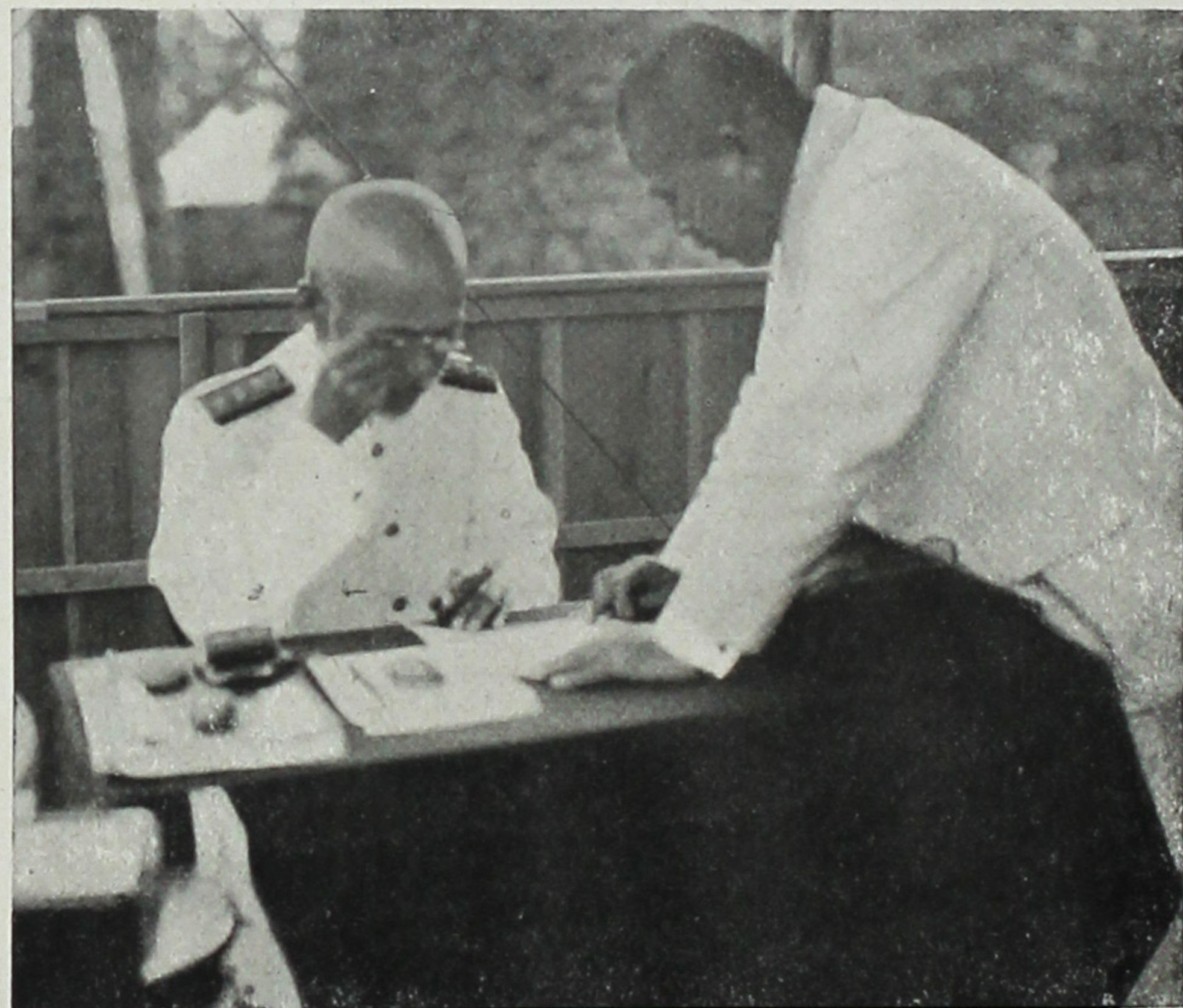


部令司府守鎮賀須横たし壊倒

Left: Headquarters of the Yokosuka Naval Station.

の取聽告報で内クツラバ
官長令司府守鎮賀須横口間野

Right: Vice-Admiral Nomaguchi, commander of the Yokosuka Naval Station, receives reports at a temporary office.



潰滅したる横須賀市街



Left: Street in Yokosuka,



Right: Landslide at the rear of commissariat of Yokosuka Garrison Headquarters. (over 100 victims buried here)

横須賀鎮守府軍需部裏の山崩れ (この下に百餘名埋没)

、満目荒涼たる横須賀市の惨状
(ガントリー・クレーンのみ巍然として聳ゆ)



Desolation of Yokosuka city. (Only thing in fact is a crane)



山崩れの爲め埋没した横須賀市街の一部

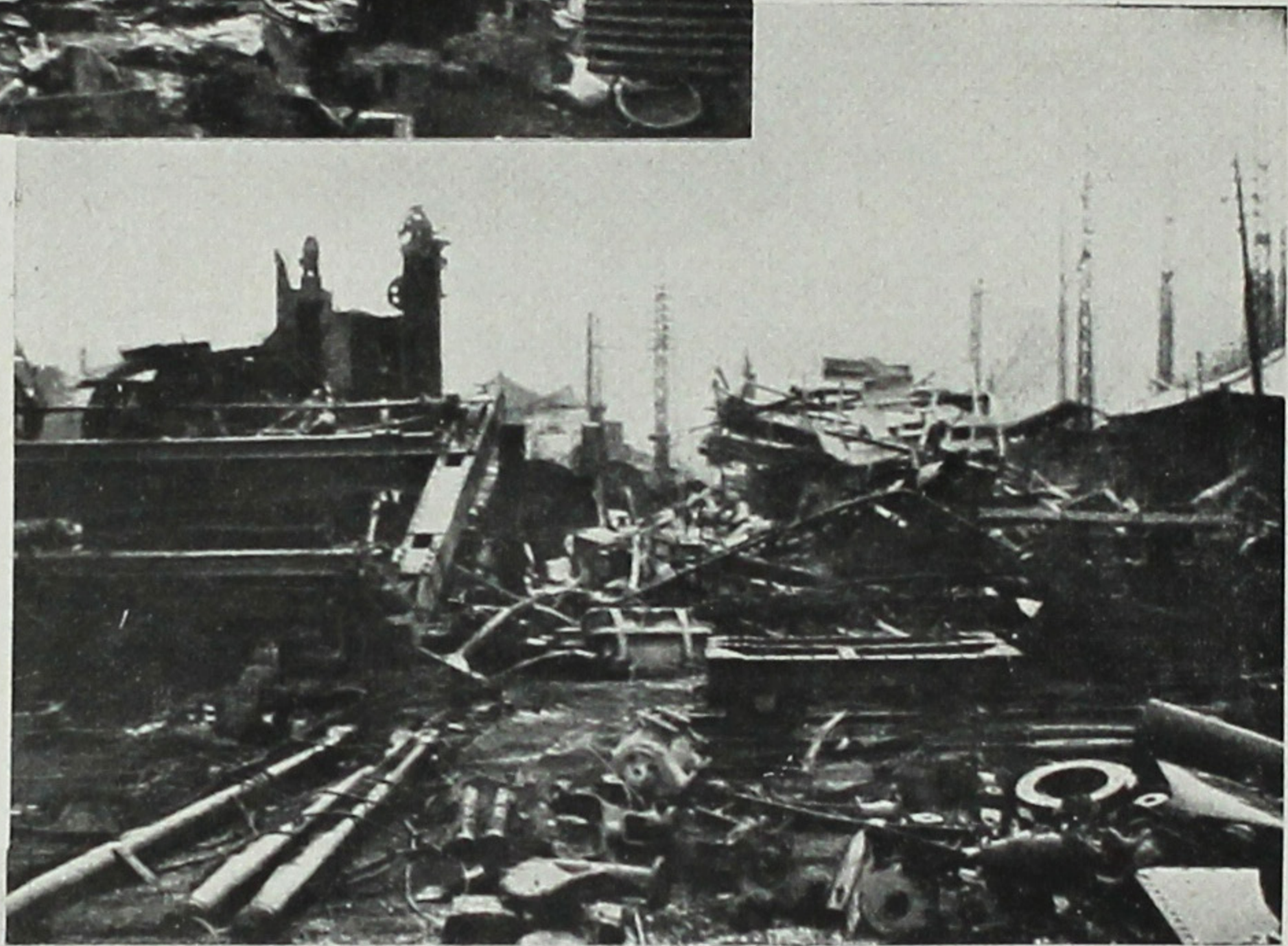


焼失したる横須賀市街

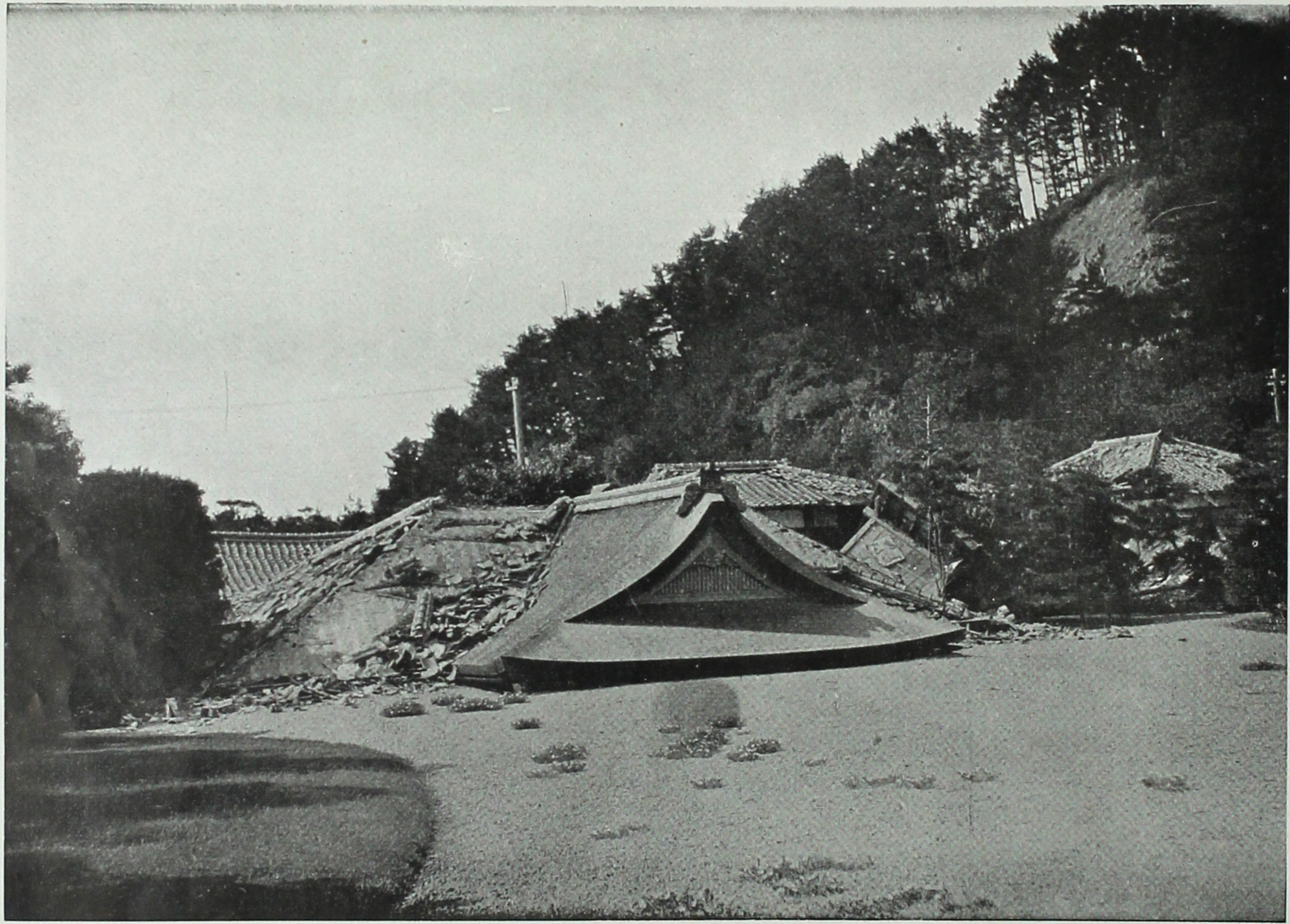
Upper : Part of Yokosuka buried by landslide.
Lower : The town of Yokosuka after the fire.



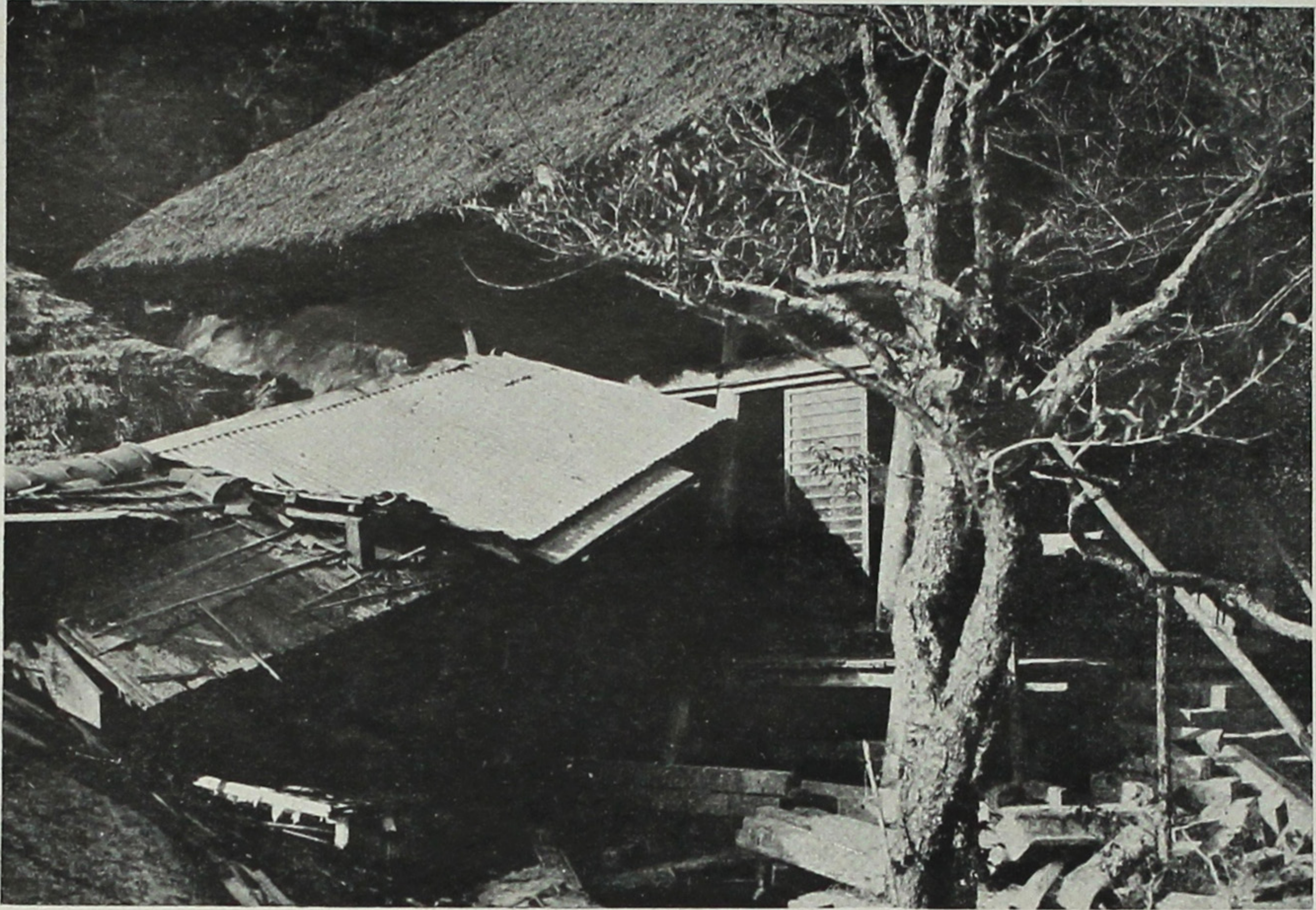
浦賀ドック
無残に破壊された



What remains of the Uruga docks.



鎌倉御用邸の倒壊
Damage wrought to the Imperial Villa at Kamakura.



山門のみを残して倒壊した圓覺寺 (鎌倉)



倒壊した建長寺 (鎌倉)

Upper : The Enkakuji, a famous Buddhist temple in Kamakura collapsed, only its main gate surviving the shock.
Below : The Kenchoji, another well known temple in Kamakura, also went down.



佛大の倉鎌だん込ち落寸五尺一め爲の震地

The Daibutsu at Kamakura, a familiar figure among foreign visitors to the town, has sunk about 15 inches into the ground.



大磯附近に於ける列車の覆顛

A passenger train wrecked near Oiso. Many trains running in the afflicted regions suffered a similar fate.

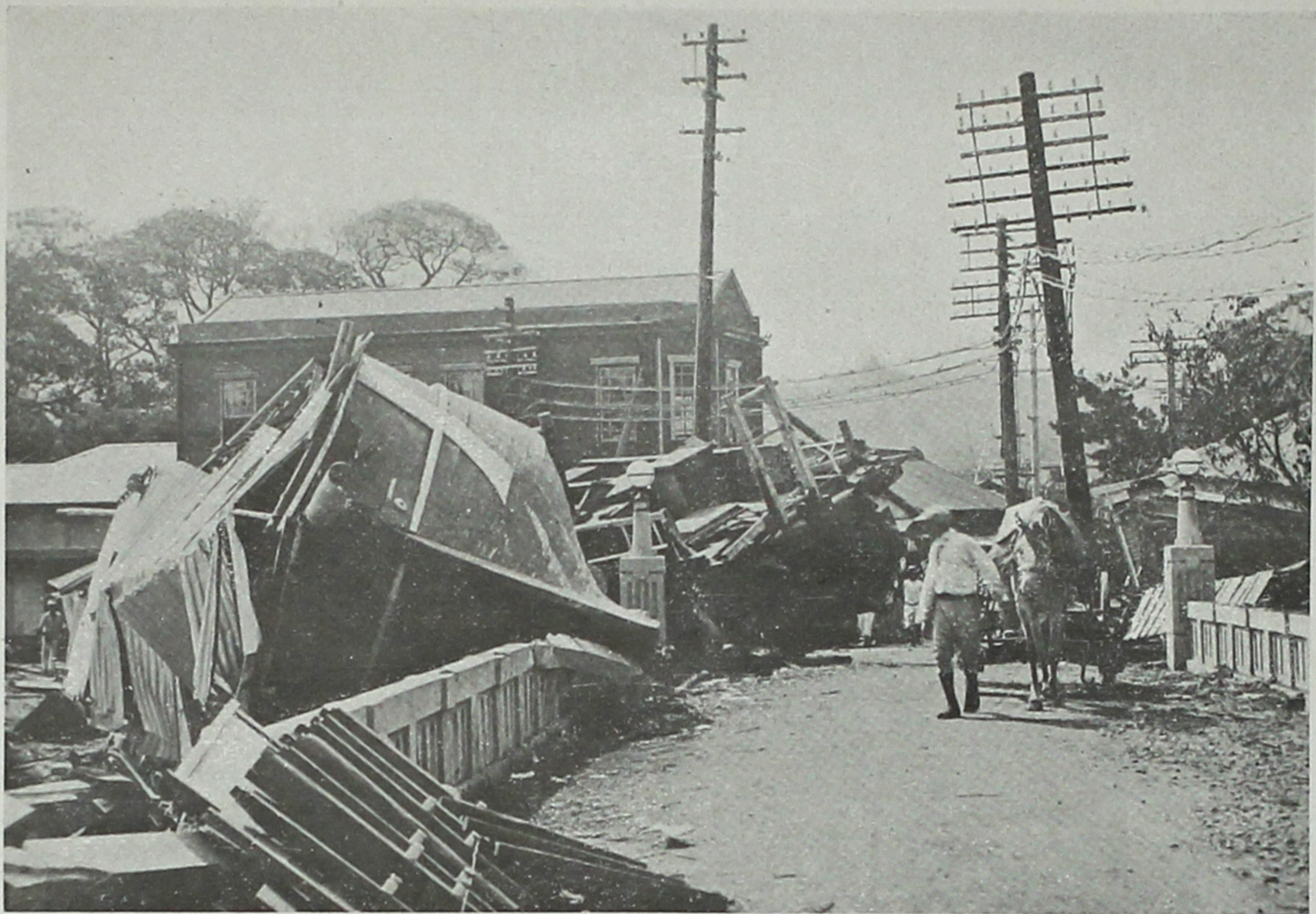


場し渡の川入馬たし残をみの脚橋

Ferry-boats on the Ba-nyu River, Tokaido line. The long bridge was completely destroyed, leaving just a few sections.

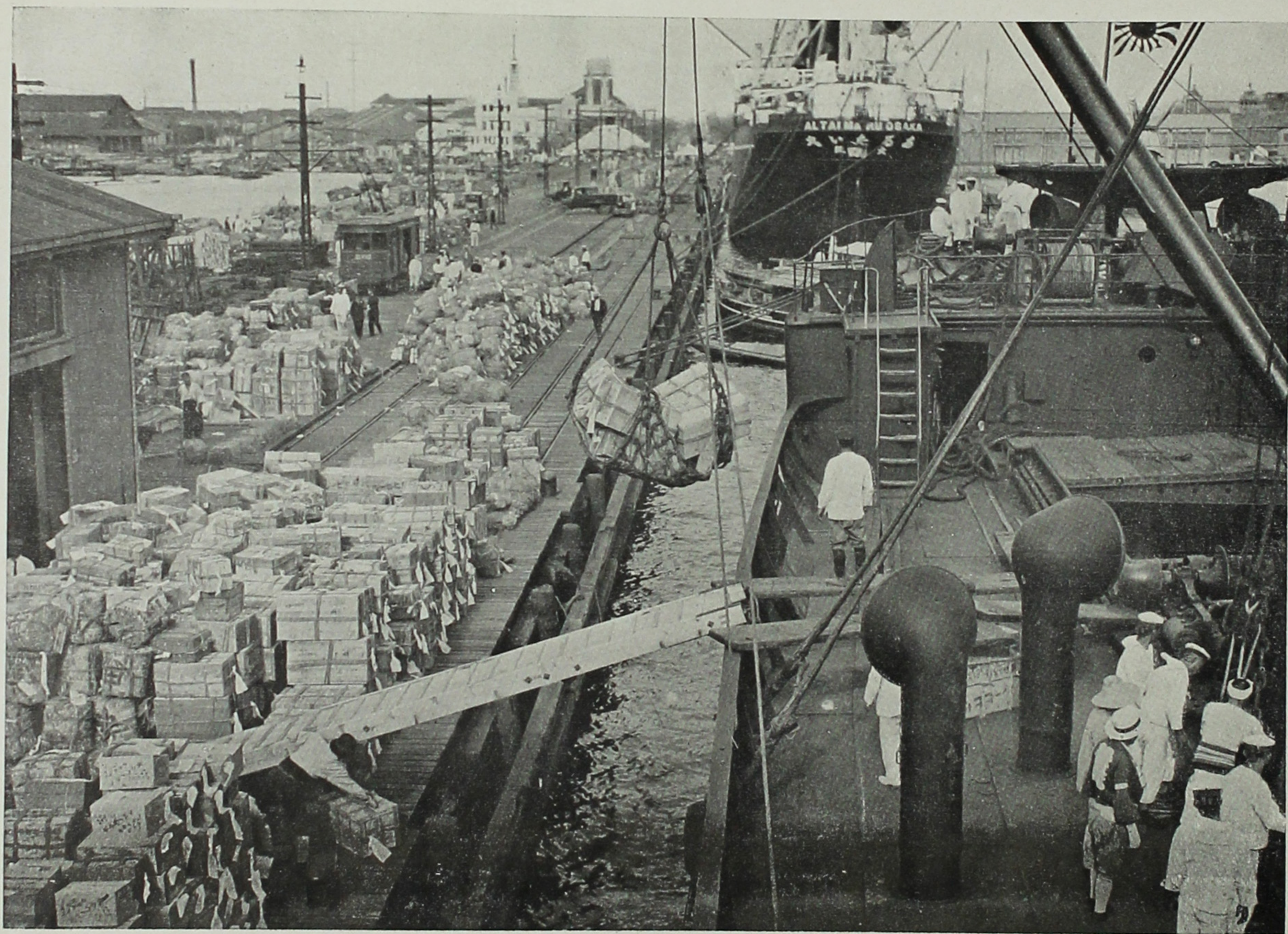


(縣岡靜) 町東伊たし滅潰てれは襲に嘯海
Whole town of Ito, Shizuoka Prefecture, destroyed by tidal waves.



海嘯で市街の中央に押し上げられた漁船（静岡縣伊東町）

The town of Ito, Shizuoka Prefecture, suffered as badly as any. The tidal waves washed many fishing vessels quite a distance up-town. Both the upper and lower pictures show fishing smacks in the heart of the town.



(橋棧坂大) 戸室艦務特む込積を品恤救の扱取社聞新日毎阪大

The special duty ship Muroto loading relief supplies at a wharf in Osaka. These supplies constitute part of the relief goods bought out of funds raised jointly by the Osaka Asahi and Osaka Mainichi. The relief fund amounted to 3,250,000 yen.

大正十二年九月二十五日印刷
大正十二年十月一日發行

(定價全壹圓)

大阪每日新聞社編纂

大阪府豐能郡箕面村大字平尾七百七番地
發行者兼印刷人 荒木利一郎

大阪府南區南日東町四五二九ノ一
印刷所 精版印刷株式會社

大阪府北區堂島裏二丁目卅六番地
發賣所 株式會社大阪每日新聞社

東京市麹町區有樂町一丁目二番地
發賣所 東京日日新聞社

不許複製

大阪毎日新聞社の事業

日	刊	大阪毎日新聞
日	刊	東京毎日新聞
日	刊	英文「大阪毎日」
日	刊	英文「東京毎日」
週	刊	サンデー毎日
週	刊	點字「大阪毎日」
二 回 月	刊	財政經濟 エコノミスト