



*Program*

“So this is Gay Paree...  
Come along with me  
we're stepping out  
to see the  
*Latin Quarter*”

LOU WALTERS PRESENTS

# "CHERIE DE PAREE"

(THE DARLING OF PARIS)

An exciting, chic and entrancing Parisian Revue featuring stars of the Continental Stages  
and the leading European Cafes & Theatres

DANCING AND STAGING BY NATALIE KAMAROVA

Priscilla Callan Asst. to Mme. Kamarova

Costumes designed by Elizabeth Adlon — Executed by Elcue Costume Co. Orchestrations by Georges Kamaroff—Special songs and lyrics by Lou Walters and Art Waner — Men's clothes by Brooks Costume Co. and Johy Blye — Props by Decorative Plant Co. — Fabrics by Maharam-Gladstone — Scenery and Drapes by Kaj Veldon — Photos by Bruno of Hollywood — Special effects, lighting and props by Ernie D'Amato —

EDWARD RISMAN, General Manager—GIGI, Maitre D'— MATHEU PIETRONI, Chef—AL MACK, Function Manager

BAYNE & ZUSSMAN, Publicity—LOU WALTERS, E. M. LOEW, Managing Directors

ENTIRE PRODUCTION CONCEIVED AND PRODUCED BY LOU WALTERS

## Scene 1

### "FLOWERS FOR MADAME"

MICHEAL GREGG                      JACQUELINE MARCY  
MARJORIE and LEE MURRAY

#### Mademoiselles Des Paris

RUBY RICHARDS                      MARY MON TOY                      LEE SHARON

#### Kamarova Ballet

CORKY BAYSINGER                      CHRIS CARTER                      KAY COBURN

PRISCILLA CALLAN                      ESTELLE GREGOR                      LYNN MARY OLDHAM

TERRY DEE                      GLORIA LEE                      LIANE LEWIS

PAT TURNER                      DALE STRONG                      TREZ HARDEN

LAURIS LAMBERT                      BOBBIE STEVENS                      CLAIRE MONETTE

#### Mannequins

LORNA BOLTON                      MICKEY MILLER                      GWEN KELLEY

BO KING                      BEVERLY RICHARDS                      TONI BYRON                      BEVERLY HART

## Scene 2

### MONTMARTRE MADNESS MAZZONE & ABBOTT DANCERS

LOIS GERMAINE                      LEONA FONTAINE

## Scene 3

### "IT'S THE SAME THE WORLD OVER"

La Chinoise—MARY MON TOY                      La Cre'ole—RUBY RICHARDS

L'Americaine—LEE SHARON

## Scene 4

### THE 7 ASHTONS AUSTRALIAN PASTIME

## Scene 5      BAL DEZ QUAT' ZARTS

("MASQUERADE OF THE FOUR ARTS")

### JACQUELINE MARCY

Star of Nouvelle Eve — Folies Bergere and Club Lido Paris

Reynard—RUBY RICHARDS                      Question—MARY MON TOY

Reflecion LEE SHARON

MARJORIE & LEE MURRAY

Revelers Artists and their Models

Etudiant—KAY COBURN                      Bal Masque—CORKY BAYSINGER

Journal—ESTELLE GREGOR                      Nuit—LYNN MARY OLDHAM

Clochard—PAT TURNER                      Silhouette—BEVERLY RICHARDS

Censure—BOBBIE STEVENS

Le Guignol—MICKEY MILLER                      Horlage—ROSEMARY RIDGEWELL

Le Pirate—TONY BYRON                      Ciseaux—BO KINO

Le Diable—LORNA BOLTON                      Le Monocle—BEVERLY HART

Le Femme ause Diamants—GWEN KELLEY

### THE KAMAROVA DANCERS

## Scene 6

### THE INTERNATIONAL DANCING STARS DARVAS & JULIA

## Scene 7

### LEE SHARON

THE BLONDE THAT GENTLEMEN PREFER  
AND THE GIRLS IN THE BUBBLE BATH

## Scene 8

### JOEL GREY A BRIGHT YOUNG STAR

## Scene 9      "SI J' ETAIS PARISIENNE"

This is the Life of a MADEMOISELLE

### MITCHELL GREGG

JACQUELINE MARCY                      RUBY RICHARDS                      LEE SHARON

MARY MON TOY                      KAMAROVA BALLE

MARJORIE & LEE MURRAY

## Scene 10

### GRAND FINALE ENTIRE COMPANY

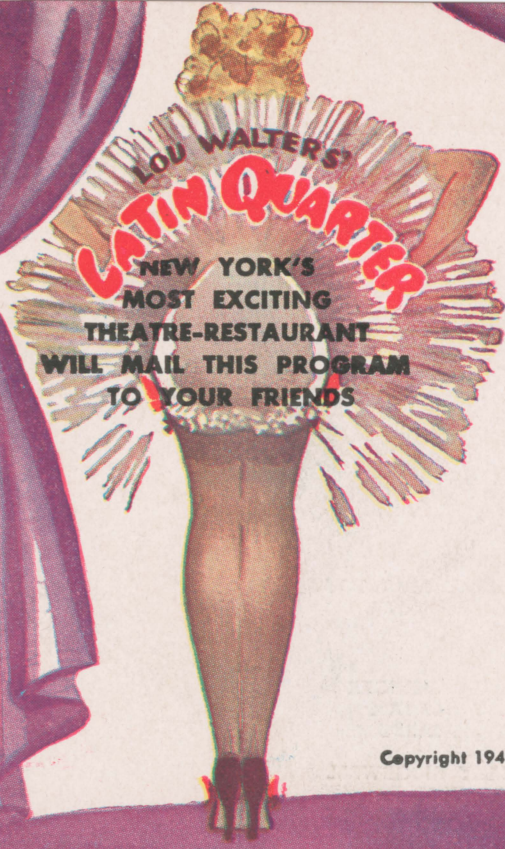
MUSIC FOR SHOW AND DANCING BY ART WANER

INTERLUDE MUSIC BY BUDDY HARLOWE

LATIN QUARTER CEILING DRAPERIES ARE OF  
GLASS CLOTH ABSOLUTELY NON-INFLAMMABLE

Copyright, 1951 by LOU WALTERS

WRITE MESSAGE HERE



Copyright 1949 LOU WALTERS



NAME \_\_\_\_\_

ADDRESS \_\_\_\_\_

CITY \_\_\_\_\_

STATE \_\_\_\_\_

From —

\_\_\_\_\_  
\_\_\_\_\_  
\_\_\_\_\_