

NATIONAL

"America's First Theatre"



THE WORLD OF

SUZIE WONG



RAY JENKINS
 at the Hammond Organ
 Appearing Nightly in
 THE WILLARD ROOM

an exciting rendezvous

JUST AROUND THE CORNER AT THE

WILLARD HOTEL

BEFORE THEATRE—FOR DINNER

The Fairfax Room

a cozy, informal spot to enjoy thoroughly the Willard's delightful food.

AFTER THEATRE

The Willard Room

Washington's most popular downtown cocktail room.

AND

The Willard Coffee House

FOR A SNACK

OPEN 'TIL 1 A.M.

Before and after the theatre . . .

THE WOODNER—of course

GOLDEN STEER ROOM

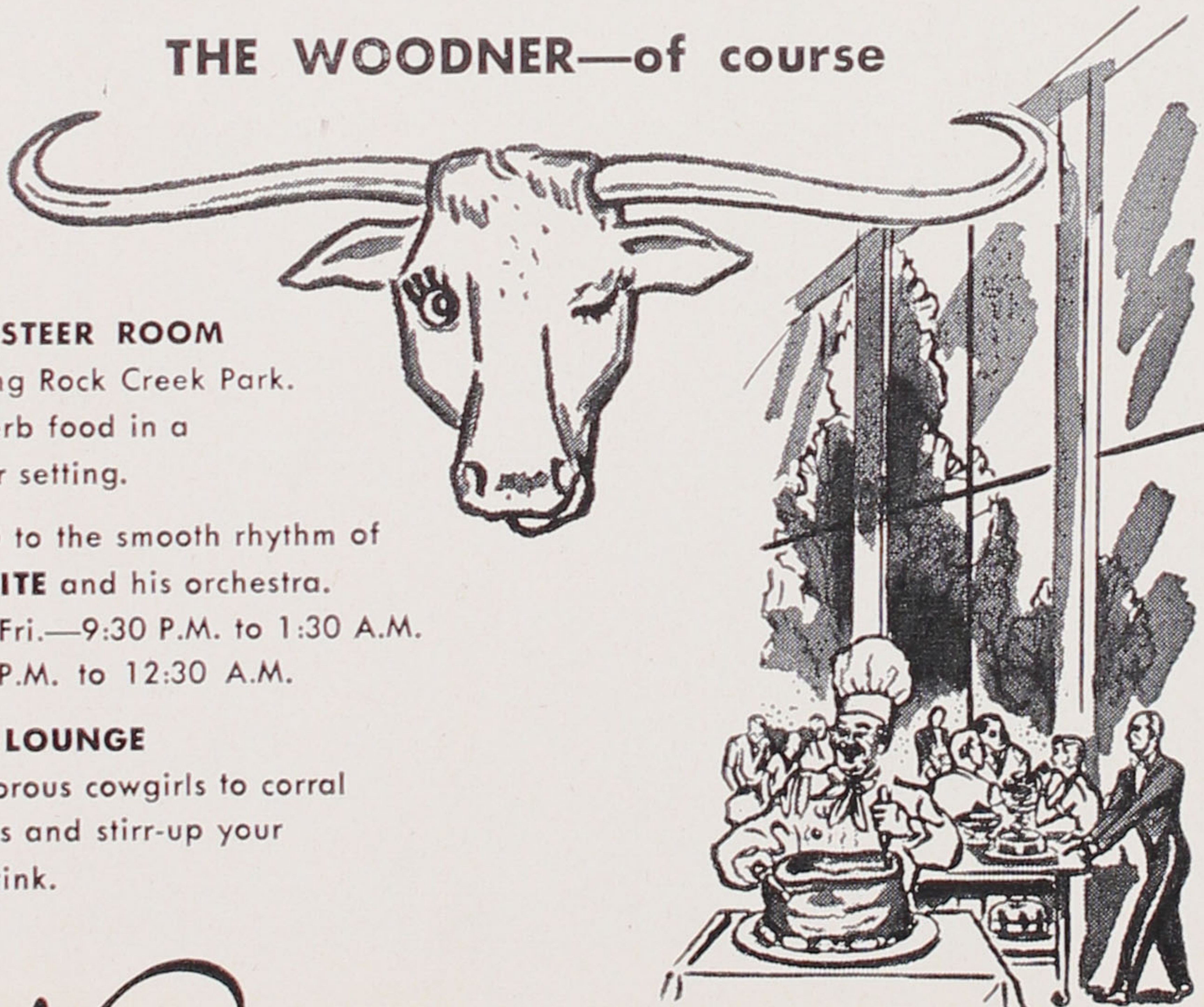
Overlooking Rock Creek Park.
 Enjoy superb food in a
 spectacular setting.

DANCING to the smooth rhythm of
JACK WHITE and his orchestra.

Mon. thru Fri.—9:30 P.M. to 1:30 A.M.
 Sat. 8:30 P.M. to 12:30 A.M.

BEVERLY LOUNGE

with glamorous cowgirls to corral
 your orders and stirr-up your
 favorite drink.



THE *Woodner*

3636 16th STREET N.W.
 Reservations—HUDSON 3-4400
 Free Garage Parking

CURTAIN CALL



Folks in the Show—Folks in the Know
 Enjoy Our Superb Food & Cocktails
 Next Door to the National Theatre

*Two Places to Dine
 —At Home and the*

Roma

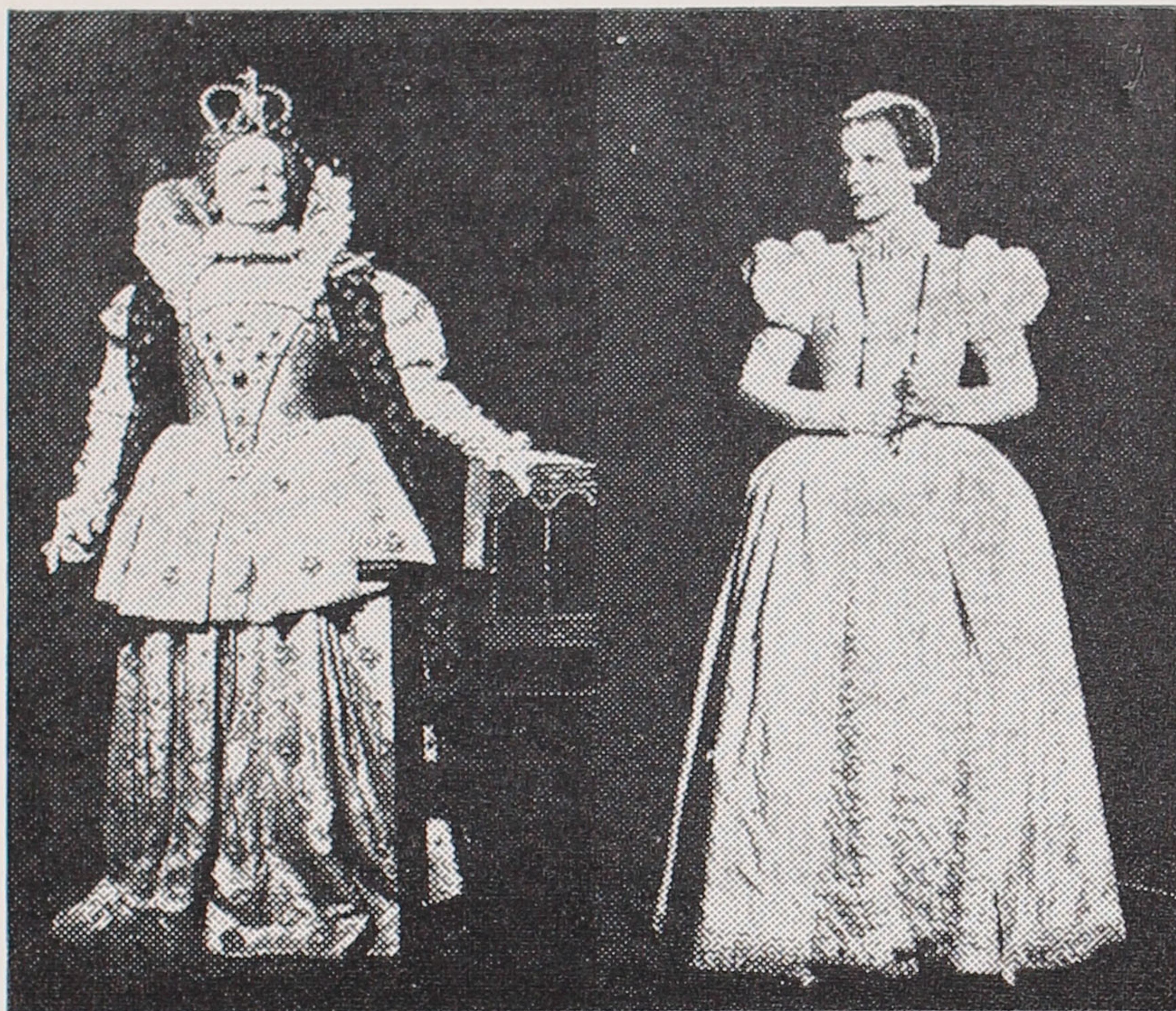
WASHINGTON'S FINEST
 ITALIAN RESTAURANT

3419 Conn. Ave.

BANQUET FACILITIES

FREE PARKING • EM. 3-6611

**"MARY STUART" coming to
the NATIONAL THEATRE**



S. Hurok is presenting the National Phoenix Theatre production of "Mary Stuart" starring Eva Le Gallienne and Signe Hasso at the National Theatre for two weeks, opening on Monday, Jan. 18th.

"Mary Stuart" is a romantic drama of the conflict between two mighty Queens — Elizabeth I of England, and Mary of Scotland — written by one of the world's most famous poet-playwrights, Friedrich Schiller.

The exciting play covers the final period in the life of the beautiful Mary, after she had sought refuge in England and was imprisoned for treason. Schiller does not dwell upon the political and religious intrigues which swirled around two of the most fascinating Queens in history, but concentrated upon the personal drama of the cousins and their relationship to each other and their impact upon history.

"Mary Stuart" is one of the most

thrilling plays ever put upon the stage, and the New York critics were moved to such adjectives as "flaming," "impassioned," "stirring," "dynamic," "magnificent," "brilliant," "a masterwork worth a 500 mile trip to see."

Eva Le Gallienne as Elizabeth crowns a career of years as a great lady of the theatre and America's only woman star-producer-director. Signe Hasso, world-famous film star, plays the fate-driven Mary, the role which made her a dramatic stage star in Europe.

"Mary Stuart" has a distinguished cast of players from the English and Broadway stage, including Staats Cotsworth, Patrick Waddington, Bruno Gerussi, Paul Ballantyne, Robert Goodier and Muriel Kirkland.

Tyrone Guthrie, the noted English director, directed "Mary Stuart." The architectural settings are by Donald Oenslager, and the magnificent costumes were designed by Alvin Colt.

**DINE in the
PRESIDENTIAL
ROOM
OF THE MAYFLOWER**



A superb cuisine with a truly international flavor is combined with The Mayflower's delightful hospitality. Luncheon and dinner served Monday through Saturday, closed Sundays.

Washington's
Smart Circle Says:
**"MEET ME AT
THE
MAYFLOWER"**

**THE BEST OF BEEF
THE RIB ROOM
OF THE MAYFLOWER**

Beef—the very, very best of Beef—is the specialty of Washington's newest dining place. Beef—aged, roasted, carved and apportioned in the beefeater tradition.



The Mayflower

Connecticut Avenue and DeSales Street
Reservations — DI. 7-3000

The Hecht Co.

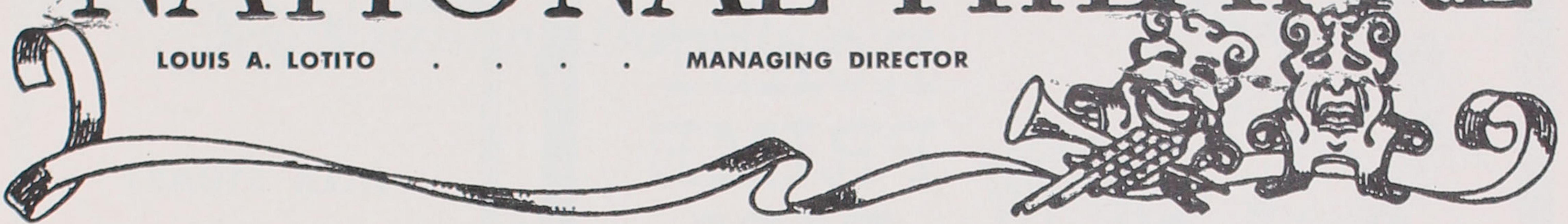


Moonbeam sequins and ribbon petals . . . adorn the bodice of a dress that's pure romance for under Southern skies. The skirt a sweep of silk. White with yellow or pink with pink. Misses' sizes. Embassy Collection, Washington only. **\$110**

NATIONAL THEATRE

LOUIS A. LOTITO

MANAGING DIRECTOR



PROGRAM PUBLISHED BY AIRES PUBLISHING CO. ★

SUITE 112, ROOSEVELT HOTEL ★

DE. 2-8787

WEEK BEGINNING
MONDAY
JANUARY 4, 1960

It is urged for the comfort and safety of all, that theatre patrons refrain from lighting matches in this theatre.

MATINEES
WEDNESDAY
SATURDAY



DAVID MERRICK
SEVEN ARTS PRODUCTIONS, INC., & MANSFIELD PRODUCTIONS

present

THE
JOSHUA LOGAN
PRODUCTION OF
THE WORLD OF

SUZIE WONG

A New Play by
PAUL OSBORN

Based on the novel by
RICHARD MASON

with

RON RANDELL

JERI MIYAZAKI

JAMES OLSON

Directed by
JOSHUA LOGAN

Settings and Lighting by
JO MIELZINER

Costumes Designed by
DOROTHY JEAKINS

(Continued on Page 7)

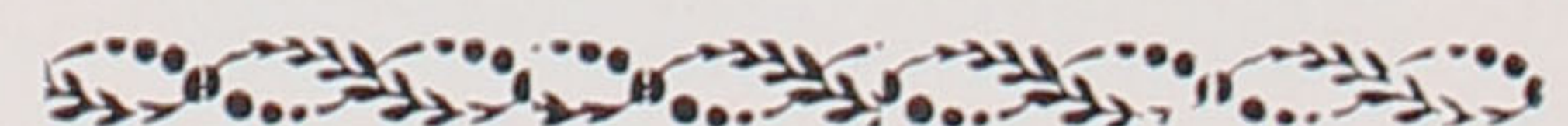


*Certainly,
you'll have a
good time!*

You can't miss when attired in such sartorial splendour. India Madras natural shoulder dinner jacket, ours alone, black silk satin shawl collar and optional cuffs. \$50. Shawl collar tuxedo, imported 9 oz. worsted. \$77.50

FARNSWORTH REED Ltd

1341 F Street, nw
NAtional 8-7800
1625 H Street, nw
Seven Corners, Va.





**ROAST
PRIME
RIBS**

at their very best

**Costin's
Sirloin Room**

HOUSE OF FINE BEEF

Downtown in the National Press Bldg., 14th & F Sts., N.W. • Ample Parking Only Steps Away
For Reservations Call EX 3-3030 or EX 3-3080
Member Diners' Club • American Express • Hilton



The "coffee-house" custom dates back many centuries in Europe and recently became popular in New York and New Orleans. Now, Washington has its first meeting-place of this kind at the GALLERY COFFEE HOUSE in GEORGETOWN, at 3213 O St. N.W. Telephone HU. 3-6481.

In its intimate, old world atmosphere you'll find coffees brewed individually to every taste . . . Creole coffee blended with cocoa . . . caffè Vienna with whipped cream . . . caffè Borgia with chocolate, whipped cream and grated orange added . . . and many others. Six varieties of tea are served, and fresh pastries selected from a cart at your table.

Ice cream delicacies and Danish Open Sandwiches (Smorbrod), complete the selection of snacks so compatible with a cup of steaming hot coffee.

Buffet luncheon begins at noon and service continues till midnight.

Keeper of the keys is Amanda Goudie—shown here with an out-of-town visitor.



CR

ALEX STUART

presents



*Dona
Mason*

STAN MAYER
at the Steinway
FOR COCKTAILS



CR

THE COLONY
1737 De Sales Street

Sterling 3-8165

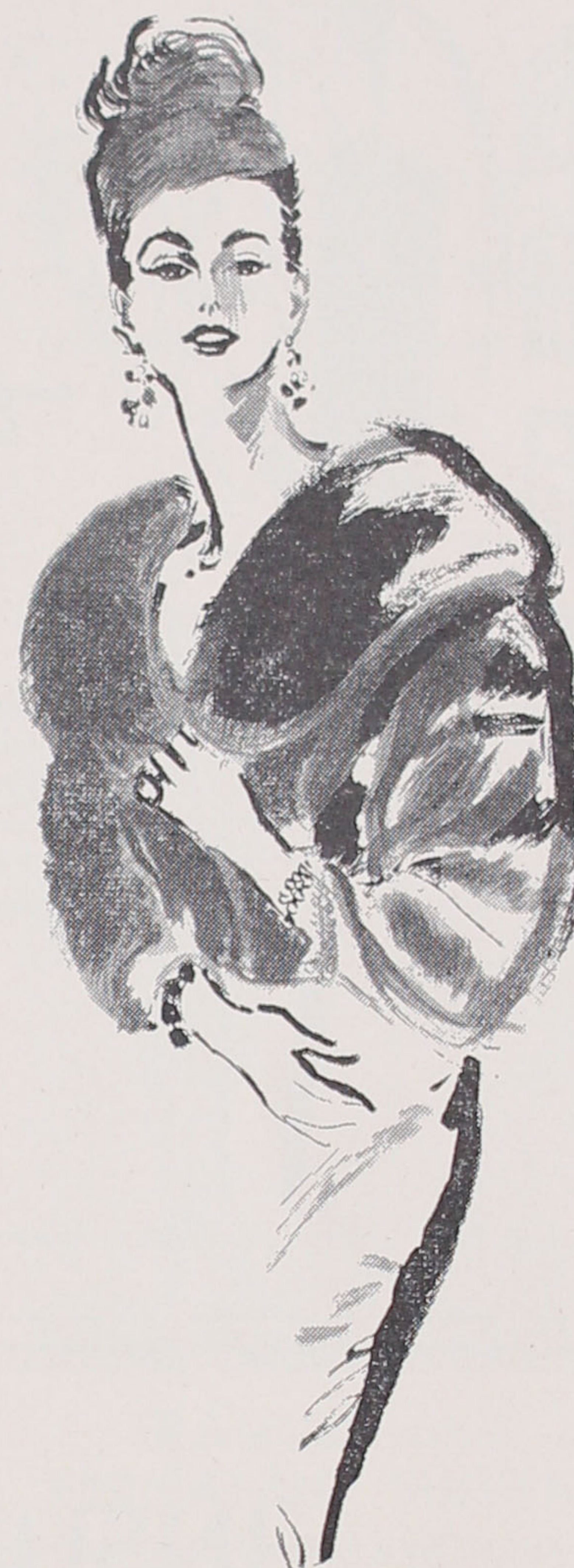
Program of the Play

CAST

(In order of appearance)

ROBERT LOMAX.....	JAMES OLSON
SUZIE WONG.....	JERI MIYAZAKI
CHINESE OFFICER.....	JOHN MAMO
CHINESE POLICEMAN.....	ALAN YOUNG
AH TONG.....	BERNARD WU
BRITISH SAILOR.....	PARKE PERINE
TYPHOO.....	LINDA HO
GWENNY.....	DOLORES DICEN
WEDNESDAY LULU.....	FLAVIA HSU KINGMAN
MINNIE HO.....	MARY MON TOY
FIFI.....	IRENE TSU

(Continued on Page 9)



exclusively ours
Black Diamond Mink

one from a collection
of Jandel Originals
in stoles, jackets and coats.
From our
Couturier Salon.

JANDEL

1412 F Street, N.W.
Baltimore New York

charles ernest

JEWELERS
Since 1928

Designers and Creators of Fine Jewelry
Diamonds - Platinum - Gold
Agents for Rolex, Omega, Girard Perregaux

MEMBER AMERICAN GEMOLOGICAL ASSOCIATION

711 Fourteenth Street, N.W.
Bet. N. Y. Ave. & G

STERling 3-7115



**RELAX
AFTER THE
THEATRE**

**OVER EXOTIC
CAFE ESPRESSO AND
CONTINENTAL PASTRIES**

WHERE STATESMEN DINE

the
OCCIDENTAL

Visit the world famous Occidental. Selected by popular poll for over 100 years as one of America's 10 best and Washington's best Restaurant.

**BEFORE THE
THEATRE**

**ENJOY A
LEISURELY
DINNER**

**OPEN UNTIL
1:00 A.M.**

1411 PENNSYLVANIA AVENUE, N.W.
Next to the Willard Hotel
Phone District 7-6467

*Five Beautifully Appointed Rooms Catering to Parties, Meetings and Banquets
Accommodating 10 to 250.*

INSURANCE

The lack of adequate fire or casualty insurance coverage is very unwise and can result in irreparable harm to your financial position.

Our insurance Department can provide coverage for all types of risks, except life. We particularly specialize in coverages involving risks having to do with real property. We would be glad to analyze and make recommendations with regard to your insurance problems.

RANDALL H. HAGNER & COMPANY
INCORPORATED
REAL ESTATE

1321 Connecticut Avenue N.W.

Telephone: DEcatur 2-3600



Ocean-Fresh
SEA FOOD
Prepared to Perfection

O'DONNELL'S
SEA GRILLS

DOWNTOWN • RE 7-2102 BETHESDA • OL 6-6200
1207-1221 E St., N.W. 8301 WISCONSIN AVE.
OPEN EVERY DAY CREDIT CLOSED MONDAYS
CARDS HONORED

TANG O' THE SEA FOOD

Program of the Play

GEORGE O'NEILL.....WAYNE WILSON
KAY FLETCHER.....CHASE CROSLEY
BEN JEFFCOAT.....RON RANDELL
DRUNKEN SAILOR.....GEORGE LATCHFORD
LILY.....ANDREA LOA
BRITISH OFFICER.....DOUGLAS GORDON

VENDORS AND COOLIES: Jose Ahumada, James Kitayama, John Mamo, Alvin Ing.

FLOWERS OF THE BAR: Gale Garnett, Nancy Kwan, Miel Saan, Kimiko Tanaka.

SAILORS: Ronald Ballard, Bob Burland, Bill Jason, George Latchford, John Lawrence, Jack Ryland.

TOURIST: Moira Wylie.

(Continued on Page 11)

Old New Orleans

"Washington's Most
Intimate Restaurant and
Supper Club"

Presents
in the SAZARAC ROOM



**RAQUEL and
FERNANDO SIRVENT**
Flamingo Dancer and Guitarist

SHIRLEY LaMAR
International Chanteuse

●
MARGIE ROBINSON
Lovely Tap Dancer

ALSO

LES WILLIAMS
Favorite Song Stylist

TWO SHOWS NIGHTLY
9:30 & 12:30

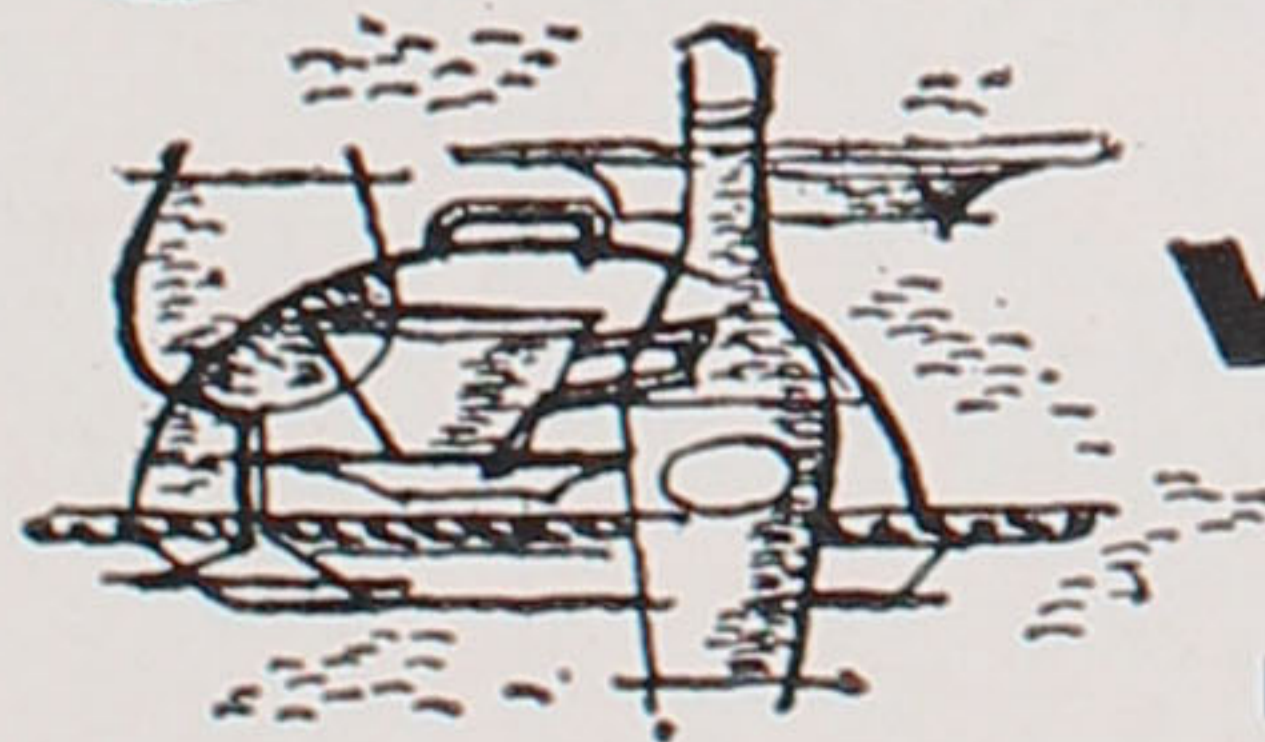
SATURDAYS
9:30 & 12:00

**DANCING TO
FRANK COVIELLO
AND HIS ORCHESTRA**

**For Reservations Call
RE. 7-7284 - 5
Connecticut at 18th**

Member Diner's Club — American Express
Hilton Carte Blanche
Enjoy Dinner in Our
Famous Continental Room

You're invited...



THE FASHIONABLE
westchester
DINING ROOM

Finest Cuisine • Served graciously in quiet luxury
Superb wine cellar. For reservations call Jean Pierre—WOodley 6-7700
Cocktails in "The Lounge" or Dining room

the holiday room Exquisite private accommodations
for ten to fifty guests. **4000 CATHEDRAL AVENUE**
Healthfully Air-Conditioned For Your Comfort



Before the theatre . . .

DINE at

PARCHEY'S
Restaurant

FREE DINNER PARKING

20TH & K STREETS, N.W.
RESERVATIONS - FE 7-6320
CLOSED SUNDAYS & HOLIDAYS
CREDIT CARDS HONORED

Save by Mail

WE PAY POSTAGE BOTH WAYS



And enjoy the prestige of having an account in one of

AMERICA'S STRONGEST SAVINGS AND LOAN ASSOCIATIONS
Liberal Dividends Paid Quarterly


PERPETUAL BUILDING ASSOCIATION

WASHINGTON 4, D. C.
Assets \$300 Million



LA SALLE DU BOIS
18th and M Streets
Washington, D. C.

REPUBLIC 7-1124



CR

THE COLONY
1737 De Sales Street
Washington, D. C.

STERLING 3-8165



LAMP POST CORNER
BAR AND RESTAURANT

An Exciting New Room Decorated in the Nostalgic Atmosphere of the Gay 90's.



JESSE GUNTHER
at the piano

RALEIGH
HOTEL

12th & Pennsylvania • NA. 8-3810
Open Daily, 7 A.M. to 1 A.M.
Sundays, 8 A.M. to 9 P.M.
Before or After the Theatre

The Cherry Blossom Lounge

Washington's Smartest

Cocktail Room



UDITH MERIMS
AT THE PIANO

No Cover
No Minimum

The Washington Hotel
15th AND PENNSYLVANIA AVE. N.W.



Program of the Play

SYNOPSIS OF SCENES

The action of the play takes place in Hong Kong. The time is the present.

(Continued on Page 12)



Serving only
the very
finest
**ROAST
PRIME
RIBS
&
Choice
STEAKS**
Cocktails

Open Sundays 4 to 10 p.m.

**OLD
Angus'
BEEF HOUSE**

1807 H St. N.W. • NA. 8-0746
Free Parking After 6:00 P.M.
Diners' Club • Am. Express • Hilton

MATT
AT THE MAYFAIR
MONDAY THRU FRIDAY
FROM 5 TO 9 P.M.

Washington's Own
Matt Windsor

And His Piano

The Man with Music
in His Heart and
1,000 Songs on His Mind

MAYFAIR

13th & F ME. 8-0639

Never a Cover or Minimum

"Nationally Famous for Saving You Money!"

ROSENTHAL

CHEVROLET

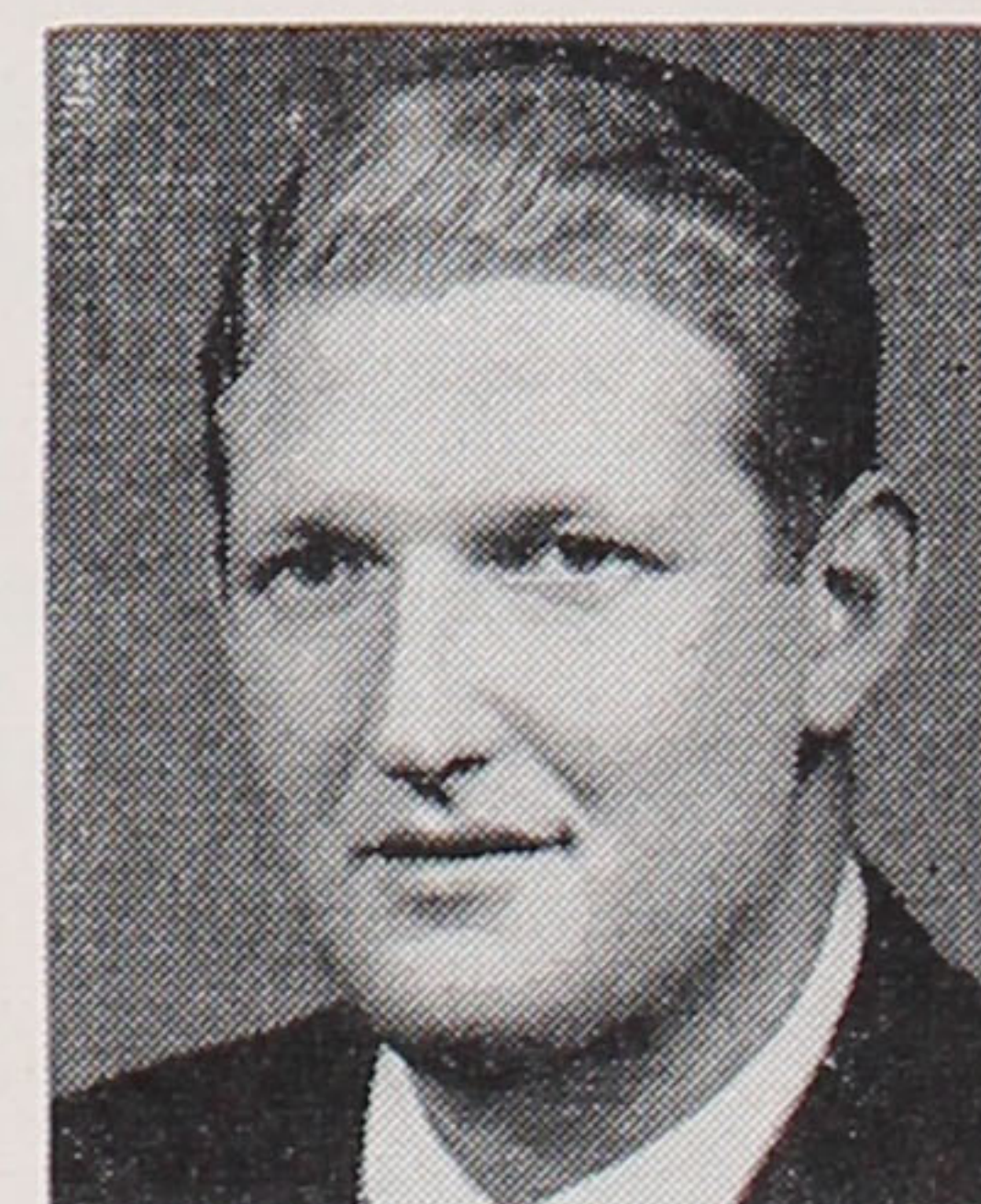
COLUMBIA PIKE and SOUTH
GLEBE RD., ARLINGTON, VA.
JA. 7-6781

*"We're Never Satisfied
Until You're Satisfied"*

RENAULT

2310 SHIRLINGTON ROAD
SHIRLINGTON, VIRGINIA
TE. 6-6781

*America's Largest
Authorized Dealer*



Bob Rosenthal

AFTER THE SHOW

Complete the Evening

At The

Neptune
ROOM

13th & E Sts. N.W.

With A

- NITE CAP
- A SANDWICH
- FRENCH PASTRY
- JUST COFFEE
- OR A FULL MEAL

OUR PRICES ARE
EXCEPTIONALLY
MODEST

RELAX TO THE MUSIC OF THE

BEN RIZZI TRIO

Plus

ROSALYNDA ST. JOHN

At the Steinway

No Cover, No. Min., No Fed. Tax

Program of the Play

ACT I

Scene 1: A Chinese Ferry

Scene 2: A Street in Hong Kong—a few hours later.

Scene 3: A room at the Nam Kok

Scene 4: The bar at the Nam Kok

Scene 5: Robert's room—a month later.

Superlative Dining..



Moon Palace

Excitingly Different
CHINESE FOOD!
Fast Home Delivery!
3308 Wisconsin Ave. N.W.
EM. 2-6645-46
Free Parking—Diners' Club

月宮酒家

Specialists in
**INVESTMENT
PROPERTY
LAND
MANAGEMENT
SYNDICATIONS**

REALTORS

**SIDNEY Z.
MENSCH
& Co., Inc.**

1613 Eye St., N.W. NA. 8-6440

Copenhaver's

Fine Stationers and Engravers

1521 CONNECTICUT AVENUE

ADAMS 2-1200

One Hour Parking Facilities—18th & Que Streets

Program of the Play

ACT II

- Scene 1: A street in front of the Nam Kok Hotel—2 weeks later
 Scene 2: Robert's Room
 Scene 3: A street in front of the Nam Kok Hotel—3 weeks later
 Scene 4: Robert's Room
 Scene 5: The bar at the Nam Kok Hotel
 Scene 6: Robert's Room

Production Stage Manager.....Neil Hartley
 Assistant to Mr. Logan.....Joseph Curtis
 Associate Designer to Mr. Mielziner.....John Harvey
 Paintings.....Wade Reynolds

"How Can You Forget?" by Richard Rodgers and Lorenz Hart.
 Special arrangements by Benny Goodman

(Continued on page 14)

CRITICS CHEER!

The Superb
 Food at
DUKE ZEIBERT'S
 Always Rates
 Rave Notices . . .



**DUKE
 ZEIBERT'S**
 RESTAURANT
 1730 L St.—Two doors West
 of Conn. Ave., N.W.
 Reservations Sterling 3-1730
 Open 'til Midnight • Sunday 'til 10 p.m.

DINNER AT *Olmsteeds*

SAUERBRATEN
 GOOSE, DUCK
 ROAST BEEF

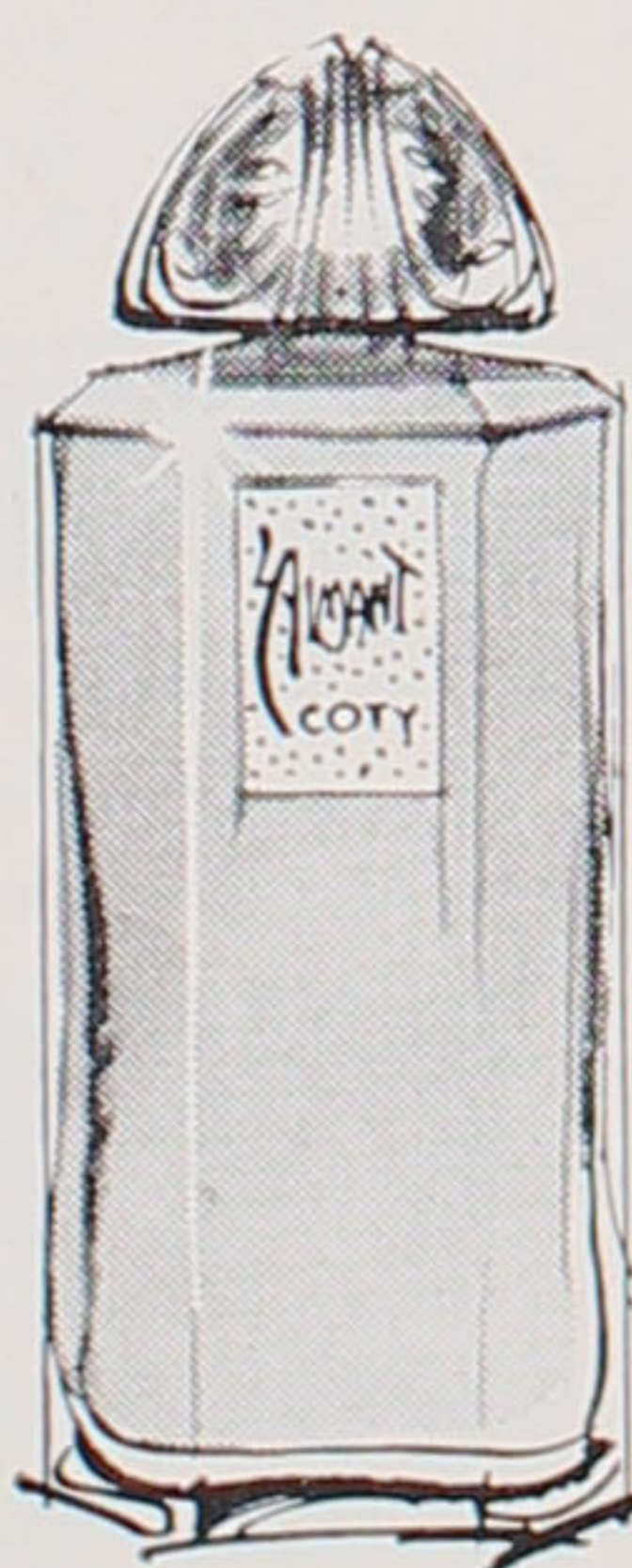
PRIVATE PARTIES

LIGHT & DARK
 WUERZBURGER ON TAP
 1336 G ST., N.W.
 DI. 7-2100

drop in . . .

for your
 favorite
 cocktail
 at the
**pink
 elephant**

HOTEL HARRINGTON
 11th and E Streets, N.W.



Nothing makes a woman more feminine to a man

L'AIMANT

PARFUM DE COTY

COMPOUNDED AND COPYRIGHTED IN U. S. A. BY COTY INC., 1960.

3.50 to 100.00, plus tax



Cordon Bleu

*a truly
magnificent restaurant*

Luncheon — Cocktails —
Dinner

After Theatre

We suggest reservations

3125 M St., Georgetown
FE 7-7250

Free parking — Old Stone House lot
3053 M St., N.W.

Program of the Play

CREDITS

Lighting equipment by Century Lighting. Costumes executed by Ray Diffen Stage Clothes. Juke Box Courtesy the Wurlitzer Company. Fabrics by Far Eastern Fabrics, Inc. Uniforms by Western Costume Company. Special electrical effects by Theatrical Workshop. San Miguel beer courtesy San Miguel Brewery, Manila, Philippines. Rattan chairs by Brancusi. Pipes, lighters and cigarette case by Alfred Dunhill, Ltd. Sound by Sound Associates. Luggage from Rexbilt. Hoover vacuum-cleaner courtesy of Hoover Co. Transportation of Hong Kong properties by Pan American Airways. Paper funeral objects courtesy of Mimi Lau, Hong Kong. Lanterns by Mitsu, Inc. Streamers by Japan Folk Craft. Flowers and fruits by Pleasance Flowers. Scenery built and painted by Imperial Scenic Studios. Properties by Arden. Wigs by Joseph Fleisher & Co. Perfumes by Lanvin. Watches by Benrus. Typewriter furnished by Remington-Rand Division Sperry Rand Corp. Additional costumes from Chinese Fashions, Inc. New York City. Marlboro courtesy Philip Morris Inc.

STAFF FOR "THE WORLD OF SUZIE WONG"

General Manager.....	Jack Schlissel
Production Associate.....	Michael Mindlin, Jr.
Assistant to Mr. Merrick.....	Edward Fuller
Company Manager.....	Manny Davis
Press Representative.....	Allan Dalzell
Stage Manager.....	David Clive
Assistant Stage Manager.....	Kathleen A. Sullivan
Assistant Stage Manager.....	Bob Burland
Assistant Scenic Designers.....	Ming Cho Lee & Will Steven Armstrong
Assistant to Miss Jeakins.....	Lewis Brown
Production Carpenter.....	Ted Van Bommel
Master Carpenter.....	Joseph Ressel
Carpenter.....	John White
Production Electrician.....	Al Alloy
Master Electrician.....	Cliff Scorey
Electricians.....	Brooks Burner & Joseph Doucette
Production Propertyman.....	Leo Herbert
Master Propertyman.....	Hugh Zinn
Propertyman.....	Joseph Pokorny
Wardrobe Mistress.....	Mabel Baer
Speech Consultant.....	Dr. Simon R. Mitchneck

MENSH SCHOOL

REAL ESTATE PRACTICE
EVENING CLASSES

A comprehensive coverage of the fundamentals of Real Estate Practices and Principles.

Complete preparation for D. C., Md., & Va. License examinations.

Placement facilities.

For Brochure, call:

NA 8-6440

Director: Joseph Mensh
L.L.B., L.L.M.

Member Education committee of The Washington Real Estate Board.

Fan and Bills

the house of famous
plank steak and roast beef

WHERE
FAMOUS PEOPLE
MEET
FAMOUS FOOD!

Free Car Valet Service While You Dine

Diner's—Amer. Exp. Plans

1132 CONNECTICUT AVENUE

Opposite Mayflower Hotel

For Reservations EX. 3-3411

Open Daily Noon 'til 11 P.M.

Sunday from 1 P.M. 'til 11 P.M.

Louise Hand Laundry

ESTABLISHED 1912

For Particular People

FINE LINENS—WEARING APPAREL

... MEN'S SHIRTS ...

Pick-Up—Delivery in N.W., Wash.

DU 7-7700 1405 - 12th St. N.W.

after the theatre

• wonderful food • excellent cocktails

and CHARLIE BYRD

his Guitar and Trio

from Jazz to the Classics

SHOWBOAT LOUNGE

2477 18th Street, N.W.

at Columbia Rd. Reservations DU. 7-9895

Program of the Play

National Theatre, Washington 4, D. C.

1321 E Street Realty Corp., Lessee

Pres., Richard Aldrich

Vice Pres., Richard Myers

Treas., Louis A. Lotito

Manager Scott Kirkpatrick

The National Theatre was built in 1835 on its present location, and is the oldest stage theatre in the United States that during its entire history has been used only for the entertaining arts. Junius Brutus Booth, Emma Wheatley and Madame Celeste were stars of its first season.

In their book, "A Great Curtain Falls," Atkinson and Kiraly write that the National Theatre is revered by "all American citizens because it is the link to their dramatic past. There is no great actor of the modern era whose name is not inseparably connected with the National . . . It is historic ground, sacred to Thalia, Terpsichore and Melpomene."

A lecture tour of the National is frequently given after a performance that takes approximately 45 minutes. This tour includes the historical landmarks of the theatre and an explanation of how the elaborate stage equipment of professional productions works.

FOYER FLORAL DECORATION BY PALACE FLORISTS, DUPONT CIRCLE

OUR COAT ROOM IS LOCATED IN THE INNER LOBBY — COATS, UMBRELLAS AND PACELS CHECKED FREE OF CHARGE.
RACKS FOR MEN'S HATS ATTACHED UNDER SEATS.

TIPPING OF THIS THEATRE'S EMPLOYEES AT ANY TIME IS NOT PERMITTED.



finest
Italian
food!

GUSTI'S
ITALIAN RESTAURANTS

19TH & M STS., N.W.
FIFTH & MORSE STS., N.E.

ESTABLISHED 1941

French
Cuisine
Finest

MAXIME

Imported
Wines &
Liquor

RESTAURANT-FRANCAIS
PARISIAN AND PROVINCE ROOMS

Dinner Music

Luncheon 11:30-2:30 Dinner 5:30-10:30
CLOSED SUNDAY

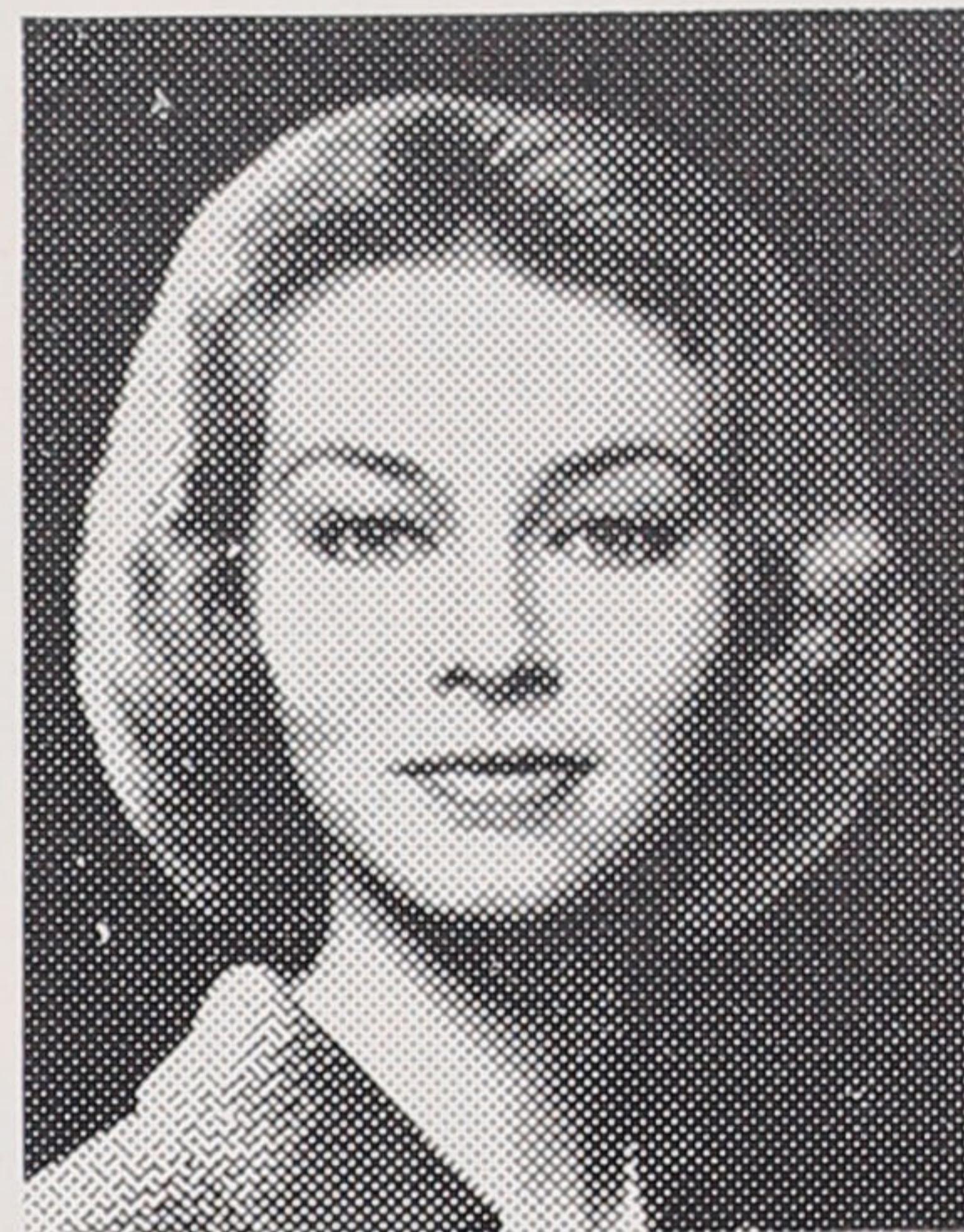
Cocktail Lounge—from 5:30

Facilities for Private Parties

1731 CONNECTICUT AVE. N.W.

H & E

Photographers of
National Notables



Give your
picture the
added prestige
of a great
name for
Valentine's Day
Harris & Ewing
makes a
difference * * *

HARRIS & EWING

1304 G. Street, N. W.
Washington, D. C.
NAtional 8-8700

Custom Draperies

Manufacturers & Designers

J. J. Schleifer

3305 Conn. Ave. N.W. EM. 2-3247

Enjoy a
wonderful
dinner, show,
cocktails
and dancing
at the
beautiful
new . . .

Champagne Room

Just around the corner at
522 13th St., N.W.
1304 F St., N.W.

TOP STARS OF THE
ENTERTAINMENT WORLD
APPEARING NIGHTLY

Dancing nightly
8:45 'til 1:45 to

Bob Simpson's
Orchestra

NO COVER • FREE ADMISSION

Open for Luncheon & Cocktails

Who's Who in the Cast

RON RANDELL
(Ben Jeffcoat)

With an acting career encompassing three continents and just a few years, Mr. Randell steps back into the legitimate theatre after some years of film making. Born in Sydney, Australia, he instinctively veered towards theatrics, first entry being radio at the age of fourteen. He joined the Minerva Theatre Group, the most celebrated Down Under play organization, and made his stage debut as the juvenile lead in *Journey's End* in Sydney. World War II saw him in the Aussie Army, following which he got his starring spurs in the film *Pacific Adventure* depicting the famed flier Sir Charles Kingford-Smith. Resulting was a Hollywood contract and Mr. Randell appeared in a tidy parcel of movies with Rita Hayworth, Ginger Rogers and other luminaries. He made his Broadway debut in the Maurice Evans production of *The Browning Version* and followed that with a sojourn in London as star of *Sabrina Fair* and *The Fifth Season*. In addition to being compère on the B.B.C. radio program *On The Town*, he did a sterling job as moderator of the British *What's My Line* for quite a while. Back in the United States, he played Morell to Olivia DeHavilland's *Candida* in the national tour of the Shaw comedy. Video claimed him for the starring roles in *O.S.S.* and *The Vise*, two series which occupied most of his time until he played opposite Joan Crawford in *The Story of Esther Costello* for the films. Mr. Randell holds championship medals for swimming and sprinting and also was a winger in Australian rugby. He is married to Laya Raki, Continental film star.

JERI MIYAZAKI
(Suzie Wong)

Jeri Miyazaki makes her Broadway debut in this production. Born in California in a wartime internment camp for citizens of Japanese ancestry, she was brought to New York where she was educated. Her schooling took place at the Professional Children's School and George Washington High School. An agent who saw some of her modeling photographs suggested her to Joshua

Larimer's

1727 Connecticut Ave. N.W.
Ph. DEcatur 2-3366 - 2-1766

SELECTED

Foods, Vegetables

Fancy Fruits

New York Prime Beef

FINEST

Imported and Domestic
Liquors — Wines — Beer

Exclusive Distributors for

Le Cafe Chambord
Frozen Foods

Distributors for the Famous
S. S. Pierce Co. of Boston

Daily Delivery



WATER GATE INN

ON-THE-POTOMAC-AT-F, N.W.

Pennsylvania Dutch

LUNCHEON • COCKTAILS

DINNER

Famous for Hot Popovers

Open every day of the Year

11:30 A.M. to 10:00 P.M.

DI 7-9256

WINDOW - ON - THE - KITCHEN

Kitcheteria

SELF-SERVICE

Delicious food . . . All our desserts
are home-made . . . popular prices
. . . no tipping . . . air conditioned

**BREAKFAST • LUNCHEON
DINNER** Quality Coffee, 5c a cup

Open Daily and Sunday
11th Street Entrance of

HOTEL HARRINGTON

11th & E Streets N.W.

Who's Who in the Cast

Logan who auditioned and signed her for this role.

JAMES OLSON

(Robert Lomax)

Hailing from Evanston, Illinois, James Olson, after graduating from Northwestern University, plus governmental duty for Uncle Sam, emerged from Lee Strasberg's Actors' Studio as one of the most promising young men of his class. At the American Shakespeare Festival Theatre, Stratford, Conn., he was Demetrius in *A Midsummer Night's Dream* with June Havoc and Florizel in *The Winter's Tale*. On Broadway he was featured in *The Young and Beautiful*, *The Sin of Pat Muldoon* and recently in *J.B.* On the screen he had important roles in *The Strange One* and *The Sharkfighters*. TV gave him the Mickey Mantle role in *The Life of Mickey Mantle*.

CHASE CROSLY

(Kay Fletcher)

As the English girl in love with the young Canadian in *Suzie Wong*, Chase Crosley, a daughter of the South, Tennessee to be exact, graduated from Columbia University with both a BA and MA degree and made her debut in Shaw's *Heartbreak House*. Broadway saw her shortly after in *All My Sons* and following a stint in repertoire covering current attractions, Kay was featured in an imposing cross-section of Shakespeare, *The Tempest*, *Midsummer Night's Dream*, *Twelfth Night*, *Henry V* and *Henry VIII*. She was Ellen Wilson in TV's serial *Today Is Ours* and screen-addicts saw her in *New Girl*.

BERNARD WU

(Ah Tong)

With this production, Mr. Wu made his Broadway debut. A native of Hong Kong, he started his acting career in Canada at the University of Manitoba with the Rainbow Players. He joined the Canadian Broadcasting Corporation and later helped to form "Theatre 77." Two years ago he came to New York and has had featured roles in TV and screen

(Continued on page 18)

The Blue Room

For your listening
and dancing
pleasure

BOB CROSS

and his orchestra.

Dining from 7 p.m.

Dancing 8:15

to 12:45.

Tuesday

through Saturday.

Reservations:

ADams 4-0700

DEC. 31 - JAN. 9

THE CHORDETTES

LOU NELSON

THE SHOREHAM
CONN. AVE. AT CALVERT

Washington's Showcase



PERMANENTS THAT DO NOT LOOK LIKE PERMANENTS

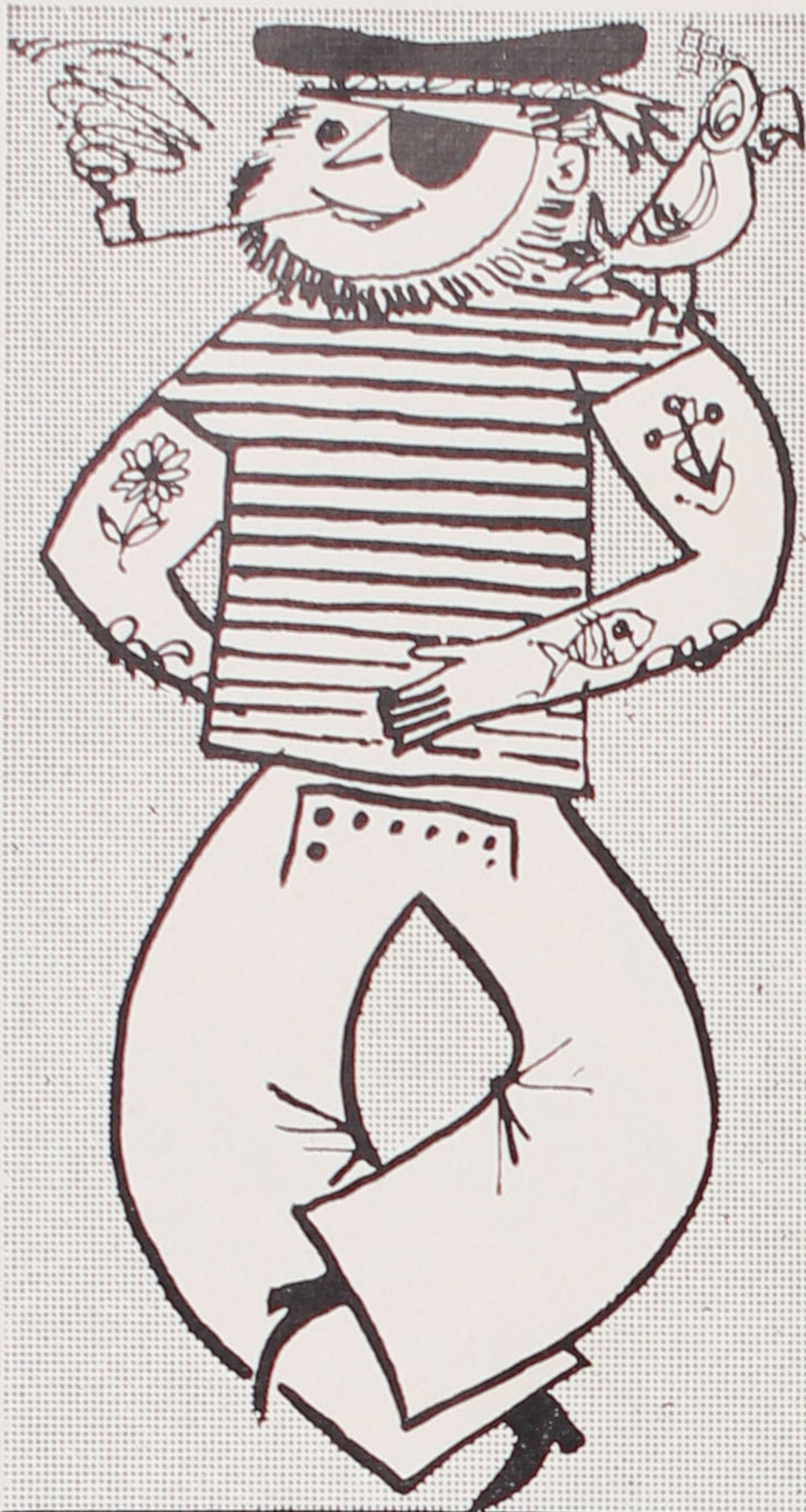
hair styles by

bernard

of the dupont plaza

NOrth 7-3664
HUdson 3-6000

DUPONT PLAZA HOTEL
at Dupont Circle



Come to the Bahamas

High on a Hill . . .

. . . just fifty minutes by air from Nassau . . . in the Northern Bahamas . . . on Green Turtle Cay . . . *that's* Bluff House. That's where you'll find beauty . . . fun . . . wonderful hospitality . . . and relaxation you never dreamed possible.

Living in Comfort . . .

The rooms are large, bright, beautifully furnished. And the view! You'll never forget it . . . Some rooms have their own patios.

Eating Like a Gourmet . . .

. . . on three fine meals a day . . . American plan. The cooking blends the best of American and native Bahamian dishes. And of course there's a well-stocked bar with your favorite drinks.

Address all inquiries to:

BLUFF HOUSE
GREEN TURTLE CAY
ABACO, BAHAMAS

Washington Representative
Mrs. Douglas G. Mode
AD. 2-5896 — ST. 3-9060

Who's Who in the Cast

(Continued from page 17)

productions. Last seen in *Auntie Mame*, Mr. Wu is now adapting a Chinese play for the American Theatre.

WAYNE WILSON (George O'Neill)

Made his first appearance in *East Is West*. He was in Arthur Miller's *The Crucible*, followed by *Golden Arm* and *Arsenic and Old Lace*. Moviegoers will remember him in *Ha'ful of Rain*, *Face in the Crowd* and *Stage Struck*. He has been featured on TV with Ray Bolger, Ralph Bellamy and others.

MARY MON TOY (Minnie Ho)

Mary Mon Toy was born in Honolulu and attended UCLA and Juilliard to study music. She made her Broadway debut in *House of Flowers* as the chic and glamorous Mamselle Honolulu. She has been a chanteuse in Paris nightclubs and has been featured at the Latin Quarter, and in Las Vegas and Miami clubs. She sang and danced in the summer versions of *The King and I* and *Kismet* as well as on the Steve Allen television shown and other video programs.

JOHN MAMO (Chinese Officer)

Born and reared in Hawaii, Mr. Mamo was educated at Elmhurst College, Illinois and choreographed the Polynesian Dances at Club Waikiki, Chicago. During social work and conducting his own Hula Studio, he joined the cast of *Suzie Wong* in New York. He is a Yogi expert and a linguist, speaking Japanese, Hawaiian, Chinese and French. On screen was Rock Hudson's houseboy in CBS-TV *Big Party* and will be seen in the near future in Elizabeth Taylor's movie *Butterfield 8*.

ALAN YOUNG (Policeman)

A master of ceremonies in Chinese night clubs, Alan Young had the leading role in Pearl Buck's *The First Wife*. Other Broadway appearances were in *Beverly Hills*, *Sim Sala Bim* and *The Bat*. On TV he was in *We, the People* and *The Plain-Clothesman*.



Your Cruise

HEADQUARTERS

- Caribbean
- Mediterranean
- Round the World
- Bermuda

Ask for Free Literature. Reservations at no Extra Cost to you.

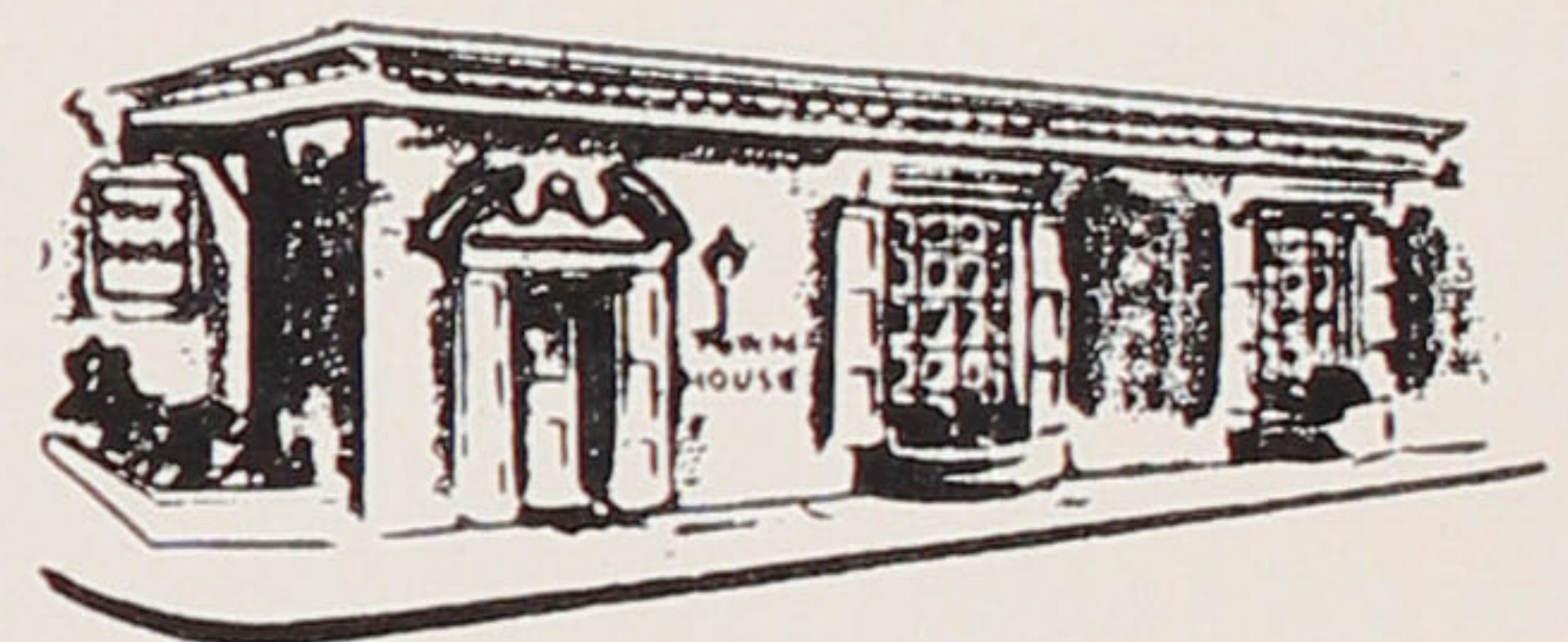
WATERS TRAVEL SERVICE, INC.

CALL CRUISE DEPT.

1716 H St., N.W., Wash. 6, D. C.

NAtional 8-1880

Washington's Favorite After Theatre Club



The Town House

WISCONSIN AVE. AT "O"

LUNCHEON — DINNER — SUPPER

Open Till 2 A.M.

Phone: FE. 3-4480

Complete Catering Department

Easy Parking

5 Minutes from Theatre

BEEF AT ITS BEST!

Washington's finest charcoal broiled specialties in great variety. Choice wines and liquors.



ROGER SMITH HOTEL

Pennsylvania Ave.
at 18th St.
Washington, D.C.
NAtional 8-2740

Member Diners' Club

THE STEAK HOUSE

Who's Who in the Cast

PARKE PERINE (British Sailor)

Becoming interested in the theatre while studying for his law degree in political science, Parke Perine realized that the stage was his calling and changed to the White Barn Playhouse in the Poconos, also playing Christ in the Passion Play. Had 13 weeks in *Brenner* series as skinniest cop in New York City.

FLAVIA HSU KINGMAN (Wednesday Lulu)

Flavia Hsu Kingman was born in Shanghai, China. She grew up in New York and attended Walton High School there before moving to San Francisco, where she appeared on television, won several bathing-beauty contests and was a contender for the title of Miss San Francisco. Her aunt, Zaya Kingman Spellman, is a noted concert singer and her grandfather was a high-ranking member of China's diplomatic corps, pre-Red China.

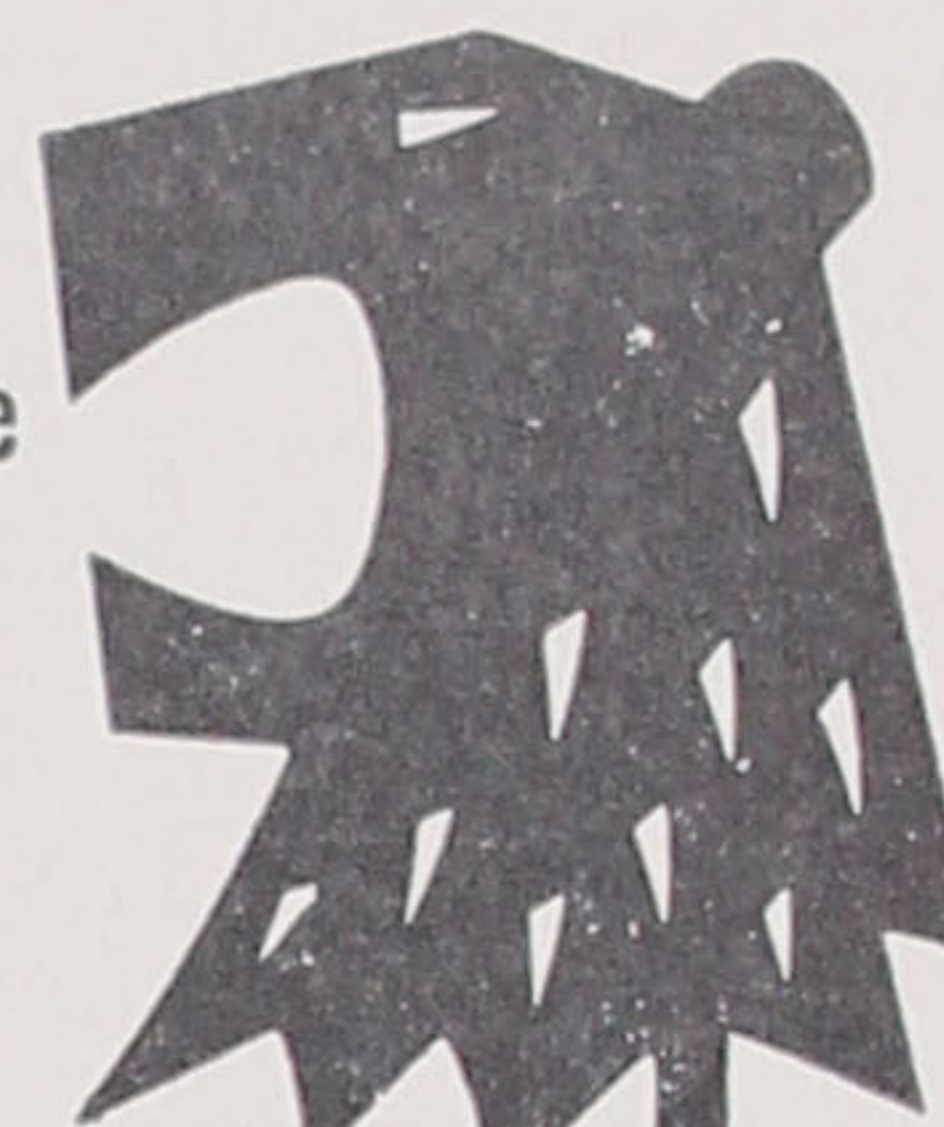
JOSHUA LOGAN

One of the theatres' most versatile and energetic personalities, Mr. Logan has given his generation some of its finest hours in theatre. Either as director, author or producer, and sometimes functioning in two or three of those roles at the same time, he has been responsible for such notable productions as *On Borrowed Time*, *Annie Get Your Gun*, *South Pacific*, *Mister Roberts*, *Wish You Were Here*, *Fanny*, *Picnic*, *By Jupiter*, *Finian's Rainbow*, *Happy Birthday* and, most recently, *Middle of the Night*. For the past few years, he has concentrated on films, directing four movies that have acquired a goodly measure of success: *Picnic*, *Bus Stop*, *Sayonara* and *South Pacific*. He was born in Texarkana, Texas, and was educated at Culver Military Academy, and at Princeton University where he was one of the founders of the University Players. He is married to actress Nedda Harrigan. For the future, Mr. Logan has organized a motion-picture company, Mansfield Productions, which has already scheduled a series of movies for production. Last season on Broadway saw Mr. Logan as co-producer with David Merrick of *Epitaph for George Dillon*.

2 WEEKS ONLY BEG. MONDAY, Jan. 18

Opening Night 8:00; Other Evenings 8:30

Matinees Wednesdays 2:00 and Saturdays 2:30



S. HUOK

presents

The National Phoenix Theatre

The season's most distinguished event

EVA

LeGALLIENNE

SIGNE HASSO

In Friedrich Schiller's great romance

Mary Stuart

with

Staats Cotsworth • Patrick Waddington • Bruno Gerussi

Paul Ballantyne • Robert Goodier

directed by TYRONE GUTHRIE

Scenery and Lighting by
Donald Oenslager

Costumes by
Alvin Colt

"The Season's Best"—Life Magazine

"High busted bravura"—Time

PRICES:

	Orchestra	1st Balc.	Upper Balc.
Monday thru Thursday Evenings.....	\$4.95, 4.40	\$4.40, 3.85, 2.75	\$1.65
Friday & Saturday Evenings.....	\$5.60, 4.95	\$4.95, 4.40, 3.30	\$1.95
Wednesday & Saturday Matinees.....	\$4.50, 3.90	\$3.90, 3.30, 2.20	\$1.45

MAIL ORDER FORM

NATIONAL THEATRE

1321 E St., N.W., Washington 4, D. C.

"MARY STUART"

Enclosed is my Check, Money Order for \$..... for..... at \$..... each in
(No. of seats)

..... for..... Mat.
(Orch. or Balc.) (Day and date) Eve.

NAME.....

ADDRESS.....

TELEPHONE.....

CITY..... ZONE..... STATE.....

ENCLOSE SELF-ADDRESSED, STAMPED ENVELOPE FOR RETURN OF TICKETS

THE **Tolman**
ESTABLISHED 1879
LAUNDRY

DRY CLEANING

wins
warm
applause



You can rely on TOLMAN for EXCELLENCE
in Laundering and Dry Cleaning . . . Linen
Rentals . . . Garment Storage.

Use the perfect "clothesline" — telephone
Miss Albrite for pick-up and delivery.

Main Office and Plant
5248 Wisconsin Ave., N.W.
WOODLEY 6-7800

Branch: Colesville Road at
2nd Ave., Silver Spring
JUNIPER 7-5327

THE **Tolman**
ESTABLISHED 1879
LAUNDRY

-- a distinguished name since 1879