

MINIDOKA WAR RELOCATION PROJECT  
Hunt, Idaho

Community Activities

March 26, 1943

Mr. Kaz Ikebasu  
Departmental Supervisor  
Community Activities  
Rohwer Relocation Center  
McGehee, Arkansas

Dear Mr. Ikebasu:

Thank you very much for your copies of the Rohwer Outpost which have been received.

Enclosed is a map of our project and a graph of the Community Activities organization here, which may help to clarify the set-up. Following is a brief resume of the activities and progress in our project, and I hope it may be of interest to you.

Athletics: This department has struggled along under the most difficulties, being handicapped by inclement weather and mud for outdoor games, and lack of space and facilities for indoor games. Table tennis has been by far the most popular, with tournaments played by both boys, girls and isseis. Softball is next popular, again played by all the afore-mentioned groups. Touch football for boys and girls, volleyball, ice skating and a football throwing and kicking contest were some of the other sport items. With the coming of better weather, ground is being prepared to lay out baseball diamonds, basketball courts, tennis courts and a golf driving range.

Clubs: National organizations like the YWCA, Boy and Girl Scouts, Girl Reserves and American Red Cross are well organized and very active. Members have participated in conferences held in the surrounding communities. On-project conferences and jamborees have also been held, at which time groups from the outside have participated whole-heartedly. Hobby clubs such as Karuta, Go, Moedel Airplans, Drama, and a Senior and Junior Stamp Club are receiving the interest and support of their respective devotees.

Entertainment: All dances, block parties, and social activities come under this department. Due to lack of personnel, most of these are arranged through individual block committees, voluntarily, and the section leader who acts in a supervisory part. For the enjoyment of the isseis, monthly Japanese programs are given, which drew capacity audiences, including in its repertoire odoris, instrumentalists, singers, and plays. Japanese records concerts are also a part of this plan. For the benefit of the hospital patients and convalescents, twice weekly record and individual talent shows are given.

Handicrafts: An initial Arts & Crafts Exhibit held in November drew a crowd of 5,000 interested spectators during a snowstorm, and the exhibit days had to be extended to accommodate the overflow crowd. The ingenuity and talent shown was surprising, and some of the specially interested articles were displayed for a week in Twin Falls. Other exhibits were an Art Exhibit, Greas-wood Exhibit and a sectional craft exhibit. Daily classes teach everything from knitting, crocheting, belt making, crepepaper craft to all sorts of novelties.

Music: The Mass Choir of 85 voices has presented programs of sacred and secular numbers in the surrounding towns and has proved itself an outstanding contact in our public relations. We also have a male quartette, male glee, children's glee, Hawaiian orchestra and a girls' string quartette. A community orchestra is in the process of organization, awaiting the arrival of music. Community sings and record concerts are held among the different sections weekly.

Sectional recreational bulletins have been started, and we are mailing you a few under separate cover. All of the sections have not issued yet, which accounts for the lack of complete seven section volume.

Trusting this may have been of some help to you, and wishing you success in your work, I am

Very truly yours,

GEORGE ISHIHARA,  
Supervisor  
Community Activities

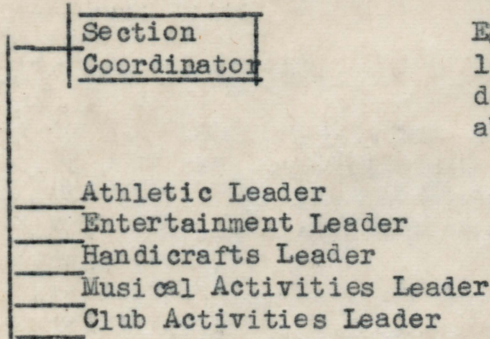
COMMUNITY ACTIVITIES SUPERVISOR

1 | 2 | 3 | 4 | 5 | 6 | Y7

Section Representatives Serve  
As Advisory Board

Athletic Supervisor	Enter- tainment Supervisor	Handi- craft Supervisor	Musical Activities Supervisor	Club Activities Supervisor
Baseball Football Boxing Judo Pingpong Calisthenics Winter Sports Volleyball Tennis	Dramatics Folk Dancing Jap. Music Dances Revues	Knitting Crocheting Woodwork Flower Making Doll Making Painting Tray Landscape Flower Arrange- ment	Mass Choir Men's Glee Concert Drum & Bugle Corps Community Singing Record Concerts	Boy Scouts Girl Scouts Girl Reserves YWCA Model Plane Stamp Club Go & Shogi Drama Club

Community divided into seven sections, each with a coordinator to work with the section leaders of different activities



Each section has a leader for the five departments named above.

Note: Section 1 shall consists of:      Blocks 1, 2, 3, 4, & 5.  
       "    2    "    "    "    "      Blocks 6, 7, 8, 10, & 12.  
       "    3    "    "    "    "      Blocks 13, 14, 15, 16, 17, & 19.  
       "    4    "    "    "    "      Blocks 21, 22, 23, 24, & 25.  
       "    5    "    "    "    "      Blocks 28, 29, 30, 31, & 32.  
       "    6    "    "    "    "      Blocks 34, 35, 36, 27, & 38.  
       "    7    "    "    "    "      Blocks 39, 40, 41, 42, & 44.