

THE TULARE NEWS

Vol. 1 No. 26

TULARE ASSEMBLY CENTER, CALIFORNIA

August 1, 1942

GILA TO HOUSE TURLOCK, TULARE, SANGER

WORKERS TO COOPERATE

ADMINISTRATION HEADS TO GIVE 'ALL STAR' SHOW

The caucasian administrators will entertain the Centerites on August 7, it was reported by Harold Leach of the Recreation Department. As yet, the program is still in the paper stage and no advance report is forthcoming.

The week following, an "All Star" review will be presented as probably the farewell show.

Full cooperation by the Corporation yard workers during the evacuation was asked by Harry Miyake, Erie Kawai, and Ken Utsunomiya, at the mass meeting held in the yard Thursday afternoon.

Because evacuation can not be fully satisfactory without the yard workers, they asked for volunteers to stay until the last day of the moving.

Miyake, chief commissioner, said to the some 195 workers, "Although other Centers have dropped the Works and Maintenance Department as soon as the evacuation notice came, we want our Works Division to stay and make ours a most successful evacuation."

Chief of the Labor Relations Board, Kawai added that the Tulare Works Division was the "most efficient of all the Centers in California."

"You have certainly contributed greatly to the morale of the Center," were the words of praise by Ken Utsunomiya, service commissioner.

BISHOP TO VISIT CENTER

Bishop C. S. Reifsnider of the Episcopal Church in the United States will visit the Center this Saturday and Sunday. Coming from Pasadena with Mrs. Reifsnider, they will visit with some personal acquaintances and others who like to see him, in the Reception room Saturday afternoon at three.

Sunday morning, August 2, he will administer the Holy Communion at 6:30 o'clock in L-4. All Chris-

(continued on page 3)

LATIN CLASS

Latin course registrants will meet at L-11-4 Tuesday morning, August 4, at 8 o'clock.

NEW MEAL SYSTEM

To go into effect about Monday, is an improvement on the meal ticket system, stated Tets Hayada, Commissioner of Feeding. The plan calls for a signboard to be placed near the entrance of each mess hall, with interchangeable signs denoting the time and group who is entitled to eat at that particular time.

When this system goes

into effect, everyone must show their meal tickets, and those who fail to do so must go to the rear of the line. Persons who have lost their tickets may obtain new ones at the Council Headquarters in F-7. The purpose of this adjustment is to eliminate chances for a shortage of food in certain kitchens because of unauthorized persons eating in them.

TO HOUSE 10,000

Of the 5,979 Japanese who will be evacuated from the Reedley, Sanger, and Visalia districts, those from Sanger will be sent to the Gila River Relocation Center, it was reported in the Tulare Daily Times. Reedley and Visalia residents will be evacuated to Parker, Arizona.

Evacuees in the Turlock Assembly Center are already in the process of moving to Gila River, and this Center will follow soon. The removal of those in the as yet unevacuated zones will be completed by August 11, while we here in this Center are not scheduled to leave for several weeks.

AUG. COUPONS

TO BE DISTRIBUTED FROM MONDAY

Issuance of August coupon books totaling approximately \$9500.00 will begin Monday morning, 9 o'clock at the cashier windows was revealed by J. J. Hodel, Center cashier. Centerites are asked to adhere to the following schedule in procuring their books.

Monday, August 3-C and D
Tuesday, August 4-E and F
Wednesday, August 5-G and H
Thursday, August 6-J and K
Friday, August 7-L and M.

The windows will be open from 9 a. m. to 12 noon and from 1 p. m. to 4 p. m. during the week. Saturday, books are obtainable from 9 a. m. to 12 noon.

Any persons living in the above mentioned units not able to come during the scheduled hours or days, may do so on the day following, announced Mr. Hodel.

LET'S HAVE TEAM WORK

"In order to execute this evacuation in an orderly manner, strict discipline and regimentation must be employed." These are the words of Center Manager Nils Aanonsen.

The Administrators, Commissioners, Councilmen, and other community leaders are forming plans for a smooth orderly removal. Certain Administrators have observed the evacuation of other Centers. In view of the above facts, absolute trust must be placed of these leaders to work out the right system.

Our leaders may figure out the system to the minutes detail, but the execution of the plan is up to us. Without the closest cooperation of all concerned, the most well laid plans will end up in confusion.

We here in the Tulare Assembly Center have made an enviable record for teamwork, discipline, and ability to accomplish things.

Are we, who have made such a record in the past, belie all our achievements by moving in a disorderly haphazard way, or are we going to crown our glory with the most efficient movement of all the Centers?

The answer to this question lies with no one but you, and you alone.

History of the State of Arizona

"Throughout the annals of state history, Arizona has witnessed one exciting event after another.

Long before this region was known to the white men, a large and superior race inhabited it. Marco de Nizán explored the rough country in 1539 in search for precious metals, which encouraged Vasquez de Coronado to follow suit. He organized an expedition the following year and visited the Moqui villages and the New Mexican pueblos.

The year 1596 saw the little establishment of a colony, and in 1689 the Spaniards were driven out of the country; by 1695 they had recovered nearly all of it, and by 1720 Jesuit missionaries had established a number of missions, ranches and mining stations. Serious Indian outbreaks occurred in 1802 and 1827, and finally this territory, known today as Arizona, was acquired by the United States in 1848. She was admitted into the Union in 1912."

(The New Standard Encyclopedia)

CENTER GLEANINGS

From Merced comes the report that they're having "Jungle Boy" starring Sabu, young Indian motion picture actor.

Twelve pints of blood were donated by the residents of Fresno Center. Maybe Tulare ought to do the

FREE BOX GIVEN

Persons desiring packing cases for the forthcoming exodus may obtain them through the Corporation Yard invited E. E. Pixley of the Works and Maintenance Division. Materials for construction of cases will be distributed free of charge to all Centerites.

same...Also, the Boy Scouts are holding a salvage drive for scraps of metal, old clothing and rags.

Free shoes are being given to the residents of Santa Anita, but supplies at present are exhausted.... Shux!!

From Tule Lake comes the report of a "Tolo Dance" where the gals are making corsages from buttons, vegetables, grass, etc. Sounds pretty good, no? The Manzanar Free Press really looks like a regular paper, now that they are more settled. Good luck to them!

Nopes, we ain't jealous!

REPLY TO LETTERS TO EDITOR

In our previous article, "Our Dances Discussed", we did not make any personal remarks to the work of Yoichi Nakase or to any other group. True, we are working under restricted conditions in planning our dances, but through additional aid to Mr. Nakase and more constructive work, we could produce bigger and better dances which would provide more enjoyment to those now attending as well as to a greater number of young people. Let's work constructively. ..stronger cooperation for the good of all!

EVACUATION PLANS MOOTED

Preliminary plans for the future evacuation of the Tulare Center residents to Gila, Arizona are being set up the administrative staff with the aid of the Council and Commissioners. A 11 division heads spoke to the Center Council at a meeting Friday, July 31, at 8:30 a.m. explaining the various problems involved in such a move. Further plans will be discussed and definite news will be presented to the people in the near future.

BAGGAGE CHECK CONTINUED HERE

The Engineering Department under E.E. Pixley, Works and Maintenance Coordinator, has nearly completed the baggage survey for the coming exodus tentatively scheduled for the latter part of August.

The survey being conducted on the weight and quantity of baggage, covers approximately 20% of each section.

Those making the survey are Kazuto Taketa, John Hotta, George Hayashi, Bud Fujimoto, Tamio Fujimoto, Gengo Sakamoto, and Tets Makimoto.

GILA RELOCATION AREA EXPLAINED

Items on Arizona Chief Campbell's Viewpoint from Here & There

Gila is pronounced (hī-la)

Arizona is a musical name. The word derived from "Ari," a maiden queen who once ruled the destinies of the Primas, and "Zon," a valley, from the romantic configuration of the state.

Arizona is the Land of Magic and of Mystery."

Polo Verde Plant, which grows in the Arizona desert, weeping willow trees stripped of its leaves is known as a romantic mistle toe, that is world renowned for its magic influence in love affairs.

The climate is known as "Dose climate." It is dry, but also very electrical.

The hot sun blisters the skin and burns the complexion to a rich nut-brown color, but the air always feels soft and balmy, and usually blows only in gentle zephyrs.

The air has a pungent fragrance which is peculiar to the desert, that is a mingled product of a variety of resinous plants.

The weather is uniformly pleasant, and the elements are rarely violently disturbed."

BUY BONDS

BISHOP TO VISIT

(Con't from page 1)

tian people of Episcopal denomination are especially urged, and all other Christians, issei and nissei of any denomination, are cordially invited to receive and partake of the sacrament. Then at the hour of Sunday School the Bishop will give a religious talk at the grandstand to which all young people's classes, adult Bible class, and others are invited.

Chief Campbell's Viewpoint

When asked to give his viewpoint of Arizona, Chief of Police, M.L. Campbell stated, "Well, I may be a bit prejudiced since Phoenix is my hometown, but personally, I think it is a very beautiful place..the sun is just like a

ball of fire. (I bet it feels like fire, too!) It is hot for about four months in a year, but the heat is more bearable than it is here, because of the low humidity. In other words, I like it very much!"

Gohachiro Miura says

"Finest place....good for the Japanese" were the views aired by Mr. Gohachiro Miura, head of the Welfare Department, when questioned as to his views on our future relocation spot. Formerly a resident of Phoenix, Arizona, Mr. Miura is considered to be quite an authority on the general environment and climate of the Gila Relocation area.

According to him, it is warm from May until the

first part of October, but the heat is much easier to bear due to the fact that the air is quite dry. The average climate ranges from 110 to 115 degrees, sometimes hitting a peak of 125, and is good for the sick and weak. Many prominent residents make annual treks to Arizona for their health.

Best of all, Tulare Citizens.....no flies or mosquitoes! (But what about the Gila Monster.)

The Government Records

"The Gila River Relocation Area is situated on the Pima Indian Reservation in southern Arizona, about forty miles from Phoenix. The Relocation Center now being constructed there will accommodate 10,000 evacuees---divided into two communities of 5,000 each. There will be plentiful opportunities for agricultural and public work on the area. There is also opportunity for private employment.

At present about 7,000 acres of the land on the

area is in alfalfa and is in excellent condition to be converted immediately to vegetables and other specialty crops. An additional 8,000 acres of raw land can be developed for agricultural production, involving the construction of canals and ditches, and clearing and leaving the land.

The growing season is 270 days, and the climate and soil are generally favorable for a wide variety of agricultural production!" (From the Relocation Manual)

CENTER

In the evening, he will be with the youth group worship service at 7:15, giving a short message, and then he will come to the adult group service and preach the evening sermon in Japanese.

Bishop Reifsnider has been in Japan for over thirty years, serving as Bishop of Tokyo diocese, as President of Rikkyo University, and as Chair-

man of the Directors of St. Luke's Hospital in Tokyo. He has recently been appointed to represent the Episcopal Church in the United States to work for the Japanese in the WCCA centers and elsewhere during the time the war lasts and after. He is a man of learning, administrative ability, and big, warm heart. Mrs. Reifsnider was born in Japan of an American missionary family in Kyoto.

"OBON" FESTIVAL DANCE SUN. NITE

RELIGIOUS SERVICES

	PLACE	TIME
*Buddhist Services		
Sunday School Service	K-6	8:30 a. m.
Sunday School Classes	D-3	9 a. m.
Buddhist Festival	Front of Grandstand	7 p. m.
*No evening service tomorrow		
Christian Services		
Sunday School for Seniors	D-3	8 a. m.
" " " Beginners	F-8	8:30 a. m.
" " " Intermediates	L-4	8:30 a. m.
" " " Juniors	F-8	8:30 a. m.
" " " K, L, and M	L-11	9:40 a. m.
" " " Primaries	F-8	10 a. m.
" " " Young People	K-6	10 a. m.
Y. P. Worship Service	Grandstand	7:15 p. m.
Adult Japanese Service	Bleachers	7:30 p. m.

GIGANTIC PROGRAM SET

Tomorrow is the schedule day for that gala "obon" festival to be held in front of the grandstand from 7 p. m.

Through the combined efforts of the various committeemen, Tulare Centerites will witness an event quite different from others sponsored in this Center.

Despite the cancellation of two dance practices, the crowd that turned out the remaining times warrants the day as a success. The entire Tulare populace is cordially invited to participate in tomorrow's program.

TIME TO GET MARRIED

MORE DONATIONS FROM PASADENA

Latest donations for the education department have been sent by Mrs. Fuessle of Pasadena. Toys, games, and reading material as well as two umbrellas for the sand box were generously contributed by Mrs. Fuessle.

Books Returned

Any donors who have loaned books to the library and wish to have them returned before relocation must call for them before August 8 at the Library.

Approximately 2,800 books and the numerous magazines will all be transported to the relocation center for future use according to Sumire Sugita, head librarian.

Latest donation to the library material is a set of encyclopedias which has been generously donated by Rev. Tajima, formerly of Pasadena.

Do you want to live an unsettled life with a future that is difficult to foresee? Here's your chance to overcome that fear, not with six lessons from Madame Lazonga, but from our one and only Welfare Department. They heartily launch a "wedding campaign" where prospective brides and bridegrooms are encouraged to tie the matrimonial knot before leaving this Center. Why, you ask?

As stated in the Tulare News Extra, our journey to Arizona might take two and a half days. This is an opportune time to go on that 'dreamy' honeymoon and after reaching their destination, the couple can easily obtain an apartment of their own and 'live happily ever after.'

All those who are interested are asked to see Butch Tamura of the Welfare Department right away. The couple may leave the Center twice; for filing a license and for the marriage.

FANCY LIGHTS

Shig Eejima and his electricians are responsible for the lighting system for the "Obon" festival tomorrow evening between D and C sections.

They will extend ropes and electric wires from four D barracks to four other C barracks.

Knitters Wanted

Miss Amy Morooka of the Welfare Department sends out a call for Red Cross knitters. Those who are doing Red Cross work are asked to finish their knitting within the next week and to bring the articles to Miss Morooka in the Welfare Department.

LEAVES FOR UTAH

Densuke Takasugi, formerly of Santa Maria, left Thursday afternoon at 2:37 p.m. for Clearfield, Utah, to join his wife and son. He resided in F-5-14.

ADULTS CAN USE SWING

No regulations will be made for the newly constructed swings, according to George Aratani, councilman. Adults can swing as well as the children.

The swings, located be-

tween D and C sections and San Gabriel and Sierra Madre boulevards, were completed by S. Yamane, foreman; M. Nakano, K. Ito, H. Kondo, and O. Nishimoto; carpenters.

CEMENT DRAIN

To prevent flooding of the sand by the overflowing water, a two feet wide cement drain was laid around the two wading pools. The work was completed Thursday and was undertaken by Henry Yamagata and his laborers.

HOME NURSING TO GRADUATE

BUCK BENNY WRITES AGAIN!

(ONLY HIS SECRETARY)

Editor's Note: The following is a letter of thanks received by the Tulare News from the secretary of Jack Benny, nationally known radio and screen comedian. The acknowledgement is for receiving the 4th of July issue of the Tulare News.

10583 Eastborne Ave.
West Los Angeles, Cal.
July 28, 1942

Mr. Brownie Furutani
Editor-in-Chief
The Tulare News
C-3-2
Tulare, Calif.

Dear Mr. Furutani:

Mr. Benny received a copy of your July issue and got quite a kick out of it. You are doing a swell job. Keep up the good work.

With all good wishes to you and your entire staff,
Yours for an Early Allied Victory,

Harry M. Baldwin
Secretary

A graduation tea will be held tonight at 8 p.m. in K-6 for the 52 graduates of the Home Nursing Class conducted by Mrs. Ritchie Patterson, Director of Nurses in the Tulare County Hospital.

The evening's program includes the introduction of guests, demonstrations based upon the knowledge gained during the course and given by selected students of the class, a few words extended by Center Manager Nils Aanonsen and Mr. McMillian, and awarding of Certificates. Refreshments will be served.

Guests of honor will be Mr. J.G. McMillian, Chairman of Tulare Chapter of the American Red Cross; Dr. James Spencer, Vice-chairman; Miss Maybelle Dyer, Secretary; Miss Ruth Thomsen, Assistant Director of Nurses of Tulare County Hospital; and Miss Connie Ottis, Evening Supervisor of Tulare County Hospital. Center personalities who have been extended formal invitations are Mr. and Mrs. Nils Aanonsen, Mr. and Mrs. C.R. Carter, Mr. and Mrs. E.E. Pixley, Mr. and Mrs. A.T. Duerksen, Mr. and Mrs. Lorne Huycke, M.L. Campbell, J. A. Patterson, Mrs. Elizabeth Patterson, Mrs. Kathryn Bergholdt, Miss Helen Osaka, Mr. and Mrs. Taki Asakura, Captain and Mrs. T. Kawai, Mr. and Mrs. Brownie Furutani and G. Muira. Invitations also have been extended to the hospital staff.

STUDENT DANCE

NEXT TWO PICTURES ANNOUNCED

"Rulers of the Sea," starring Douglas Fairbanks Jr. will be presented at the next movie show, according to Harold Leach of the Recreation Department. The week following, "The Great Victor Herbert," featuring Mary Martin, Allan Jones, and Walter Connolly will be the main feature of the weekly event.

The attendance at the "flickers" has been around the capacity mark at all times.

SHOE REPAIR

Shoe repairing will soon be under way at the F-G laundry room according to E.E. Pixley of the Works and Maintenance division. Supplies should be in at any moment with which the workers can nail or make minor sewing repairs.

All repair work will be limited to workers only. A note must be obtained from the Unit Council authorizing the repair.

The first Student Body dance will be held tonight from 8-10:30 in L-4. This dance is strictly for persons enrolled in the Tulare Assembly Center junior and senior high school and also includes the post-graduates who are registered in school. Invitations were given to all students but no person will be admitted without a bid except for the 22 honored guests who were invited for this occasion.

Donations were accepted from the students and faculty to defray the expenses for refreshments. The side entrance will be opened to admit all persons attending the dance. With Bill Yamana, president of the Student Body as emcee, the evening's program will consist of recordings for the dance, and also entertainment.

Credit should be given to the Student Council, who is working diligently to make this social a success. Chaperons for the evening will be the junior and senior high school faculty. According to



Miss Helen Osaka, head of the Education Department, about 255 students are expected to attend this gala event.

WADING POOL REGULATIONS

- I. Before entering the pool, all persons must take a shower and use the foot bath placed at the entrance. (This is an order of the Dept. of Public Health).
- II. The following will not be permitted; Diving or jumping, pushing, wrestling, ducking, running in or out of water within the fence, spitting in or out of water within the fence, blowing the nose within the water, back stroke, walking on edge of the pool, splashing water unnecessarily, playing with

- pipes, inlet and outlet, also sprinkler placed in center of pool; articles such as toys, woods, rocks, etc. are not allowed.
- Do not climb over the fence. Use the gate. Bating within the fence is not permitted.
- III. The guard in charge will not be responsible for any personal belongings.
- IV. Report all cases of nose bleeds, cuts, sickness, etc. to the guard.
- V. Pool will be closed 12:15 to 1:30 p. m. and 5:15 to 6:45 p. m.

Lets Dance!

Girls, there's still time to ask your man to the Backwards Dance. Not only a full evening of better than ever music, but a full hour featuring Tod Yamamoto's orchestration makes this dance a "must". Among some of his presentations are: "The Moon Won't Talk", "Stardust", "Can't Hold a Memory In Your Arms", and "Sleepy Lagoon". The chaperons for the evening will be Mr. and Mrs. Takashi, Kai of Gardena.

PIPES LAID

One hundred and fifty five feet of sewer pipe was laid near the E section to drain all the water from the vegetable preparation room, Thursday. It was completed by Paul Lambell, head of the plumbing, Ken Mericks, foreman, and his plumbers.

FENCE WHITEWASHED

Whitewashing of all the fence posts surrounding this Center was finished yesterday by J. Fukutaki, foreman, and his painters M. Fujimoto, E. Yamamoto, T. Matsumura, and S. Yamuchi.

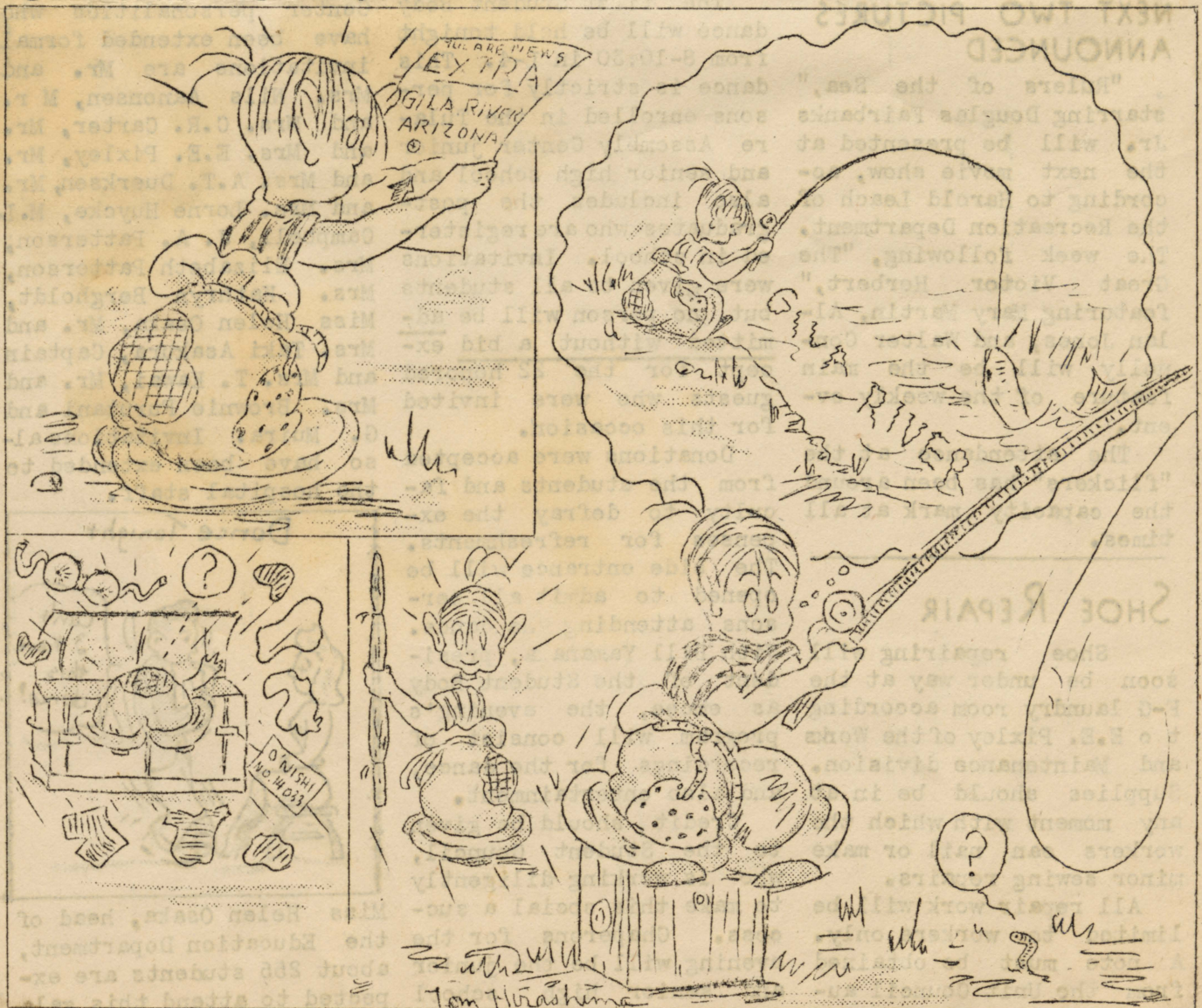
EMOTO, KAWAMOTO, DIPLOMAS HERE

Nobuko Emoto and Mistugi Kawamoto are asked to call for their Ventura High School diplomas at J-6-2 if they wish to have them. Other envelopes, which formerly contained diplomas of various students can also be called for at Helen Osaka's office.

BUY WAR BONDS

DANNY O'NISHI

TOM HIRASHIMA





MEXICO

Map of Arizona

The Corporation has put out the little red shed as a garage for the newly mired and J. Samachina, ing. About a hundred per- sons attended.

NEW FIRE WAGON HOUSE

The average velocity for the 301 days.

GROWING SEASON: The average velocity for the 301 days.

WIND VELOCITY: The average velocity for the 301 days.

Yearly Average: 84%

Yearly Average: 7.98 inches

March 81 Sept. 88

Feb. 77 Aug. 83

Jan. 78 July 83

Dec. 78 June 83

Nov. 88 May 83

Oct. 89 April 83

Spring, Summer

April 0.48

May 0.12

June 0.07

July 1.04

Aug. 0.28

Sept. 0.71

The Recreation Depart-

party last Tuesday in K-8,

at which time all those

were required to

wear a pair of sandals.

The party was held in

the little red shed.

This shed was constructed

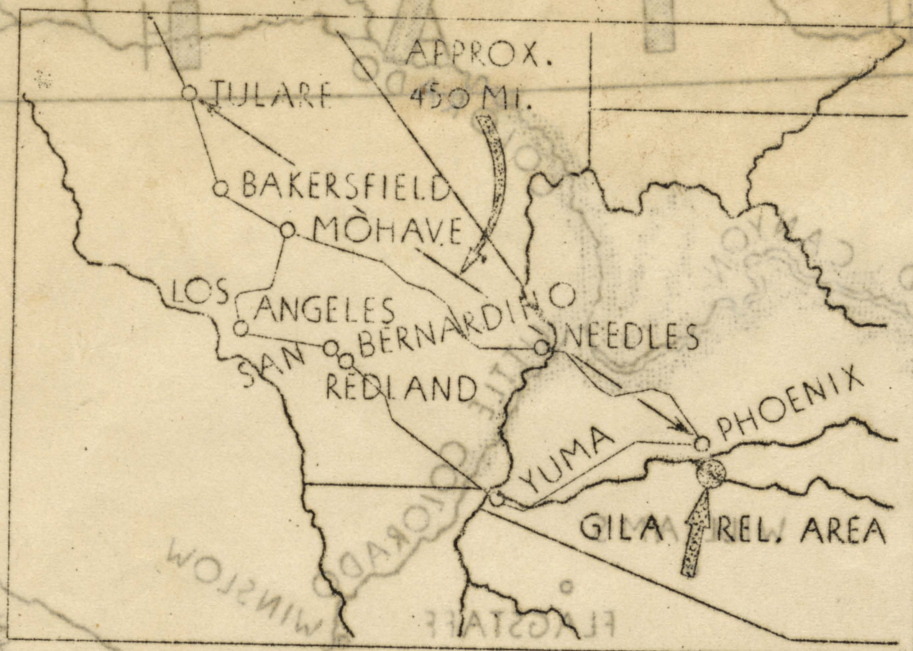
as a garage for the newly mired

and J. Samachina, ing.

About a hundred per-

sons attended.

MOST LIKELY TRAIN ROUTE



Phoenix Climate GILA IS 40 MI. FROM PHOENIX

Averages-----as based upon reports made by the U.S. Department of Commerce Weather Bureau, for a period of forty-six years-----from January 1896, to December 1941 inclusive.

AVERAGE DAILY MINIMUM TEM.			AVER. DAILY MAXIMUM TEMP.		
Winter Mos.	Spring	Summer	Winter	Spring	Summer
Oct.	April	52.9	Oct.	April	82.4
Nov.	May	60.3	Nov.	May	91.1
Dec.	June	69.3	Dec.	June	101.2
Jan.	July	77.2	Jan.	July	103.4
Feb.	Aug.	76.0	Feb.	Aug.	101.4
March	Sept.	69.1	March	Sept.	97.1

The average yearly temperature is 70.2

AVERAGE RELATIVE HUMIDITY							
Winter Months			Spring & Summer Months				
	6 A.M.	Noon	6 P.M.		6 A.M.	Noon	6 P.M.
Oct.	56	28	30	April	50	23	20
Nov.	62	30	36	May	41	18	16
Dec.	68	40	41	June	36	17	14
Jan.	68	36	38	July	52	29	23
Feb.	67	38	34	Aug.	60	34	28
March	60	29	27	Sept.	56	30	27

Yearly averages are 56 in the morning, 30 at noon, and 28 in the evening.

PERCENTAGE OF THE POSSIBLE NUMBER OF SUNSHINE HOURS			AVERAGE INCHES PRECIPITATION		
Winter	Spring	Summer	Winter	Spring	Summer
Oct.	April	87	Oct.	April	0.43
Nov.	May	92	Nov.	May	0.12
Dec.	June	93	Dec.	June	0.07
Jan.	July	83	Jan.	July	1.04
Feb.	Aug.	83	Feb.	Aug.	0.92
March	Sept.	88	March	Sept.	0.91
Yearly Average: 84%			Yearly average: 7.96 inches		

WIND VELOCITY: The average wind velocity for the period January 1896 to December 1941 was 5.8 miles per hr.
GROWING SEASON: The average growing season here is 301 days.

NEW FIRE WAGON HOUSE

The Corporation Yard has put a new addition to the little red fire house. This shed was constructed as a garage for the newly acquired fire truck.

Head of construction was S. Yamane, foreman, and workers were: T. Tanemura, M. Gyotoku, M. Tanemura, and J. Sameshima, carpenters.

MORNING GYM HAS 254 PEOPLE

The morning exercise class for adults, which started recently with an attendance of only thirty is now made up of 254 people. The purpose of this class is to build up bodies, and by doing so prolong life, which can be utilized in many useful ways.

A part of the recreational program, it is under the supervision of Masaji Goto, the Assistant Recreational Director. In charge of this class is Jiro Morita, with the Rev. Hiroshi Izumi, Albert Ikeda, and Harry Hirose assisting.

The originator of the idea for this class is Gohachiro Miura, who is very much interested in the welfare of the people. This class will be continued at the Relocation Center, it was reported.

NEW ARRIVALS

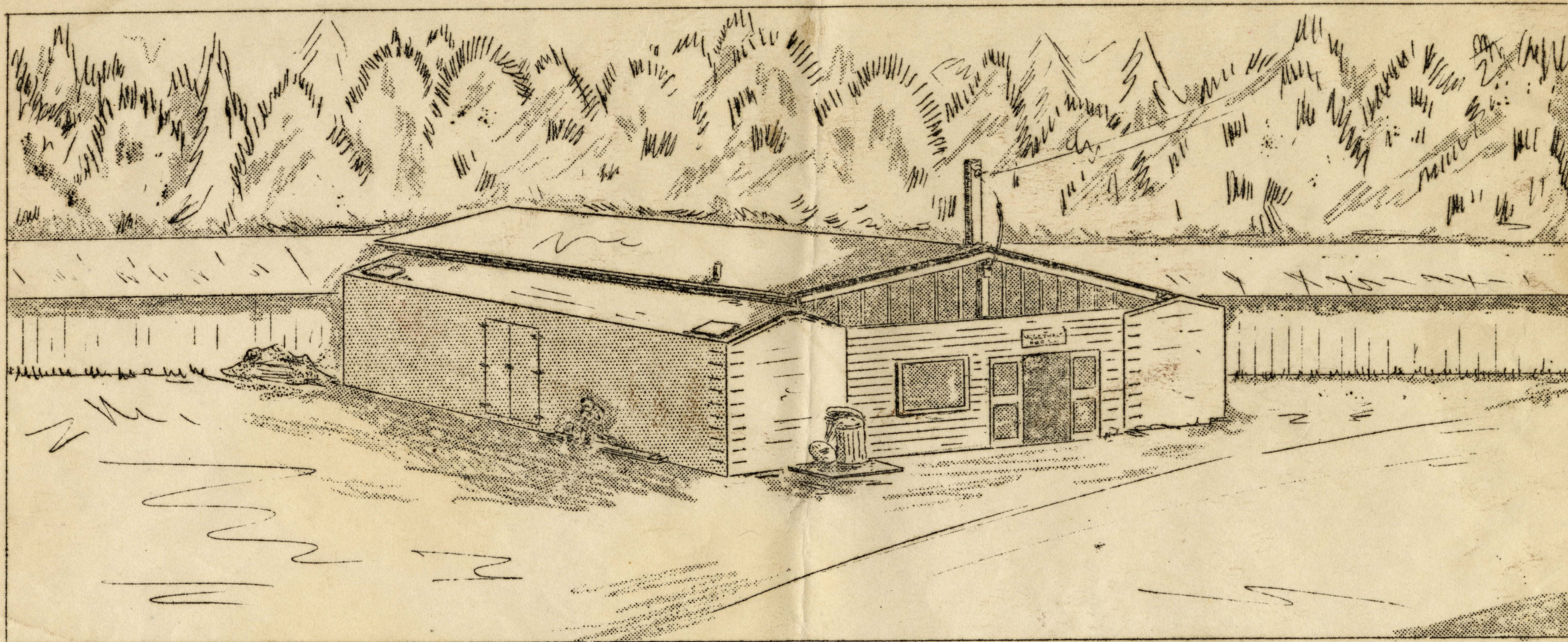
Latest Tulare Assembly Center arrivals include: Dentaro Araki, Kamejiro Araki, Yoshiaki Murakami, Chutarō Ito, Masao Uyesaka and Kunitaro Maeno, who arrived here by train from North Dakota yesterday afternoon.

NOTICE BOX

The 10 x 10 inches three-ply boxes now attached to each barrack and mess halls, are for the distributing of pamphlets and important notices by the Center administration. The boxes were made by the carpenters under Haya Uehara.

Party Held

The Recreation Department workers held a "Wreck" party last Tuesday in K-6, at which time all those attending were required to wear some sort of bandage. The evening was spent in playing games and dancing, with refreshments following. About a hundred persons attended.



VEGETABLE PREPARATION ROOM

SKETCH NO. 3...JOHN "NANA" FUJIMOTO, ART EDITOR

Preparation of all our fresh vegetables is taken care of in the Vegetable Preparation Room where they are washed, cut and then distributed to the ten kitchens.

LOMPOC GIRLS

PLAY ALHAMBRA BASKETEERS

Lompoc's peppy girl's basketball team will meet Alhambra tonight at 7 p.m. On Tuesday night, Spartans nosed out the exclusive Pasadena gals 17-6. Then on Wednesday night, two exciting games were held. Arroyo Grande trounced Santa Barbara 17-6, and Guadalupe beat All-Arounds to a score of 20-6. On Thursday night, Oxnard took on Santa Maria and won out to a score of 13-2.

- Spartans-17 Pasadena-6
 4-Kanebayashif Nishikuwa-4
 10-Yamanaka f F.Hamane-0
 3-M.Tsuda f Watanabe-2
 D.Ikeda g Y.Watanabe
 K.Otomo g M.Nakahiro
 D.Matsumoto g F.Sameshima
S.Barbara-6 A.Grande-17
 2-H.Mizukami f F.Kobara-4
 O-Masumoto f Fuchiwaki-13
 2-S.Kawamoto f Nakamura-0
 M.Mizukami g M.Nakamura
 C.Shimomura g I.Kobara
 A.Watanabe g U.Nozaki
 Scoring subs; SB-B. Watanabe-2.

- All-Arounds-6 Guadalupe-20
 O-Nakaya f M.Murata-7
 O-Suenaga f M.Kataoka-6
 6-L.Tanaka f Kuwamoto-7
 U.Nakaya g M.Sakai
 Y.Fujita g J.Kitagawa
 S.Shikota g M.Sugiyama
Oxnard-13 Santa Maria-2
 2-S.Nakai f M.Okazaki-2
 O-Matsumiya f H.Sakaji-0
 11-Y.Inouye f M.Hagiya-0
 K.Tsunoda g M.Yoshihara
 M.Moriwaki g R.Yoshihara
 H.Tagami g Y.Oshita
 H.Sakata g H.Shintani

PEE WEE STANDING

TEAMS	W.	L.	PCT.
Santa Maria...	9	1	.900
Oxnard.....	8	3	.727
Compton.....	6	4	.600
Pasadena.....	6	5	.555
Firebugs.....	4	6	.400
Santa Barbara..	4	6	.400
Inglewood.....	3	7	.300
Guadalupe.....	2	8	.200

PEE WEE SCHEDULE

Compton vs. S. Maria	Sun-2
Firebugs vs. Compton	Mon-3
S. Barbara vs. Ingle	Tue-4
S. Maria vs. Oxnard	Wed-5

JR FIREMEN MEETS "J" MESS

The Jr. Firemen vs J Mess is billed for next week's B League schedule on Monday at 9 a.m.

Tuesday will find the Sr. Firemen and the Bullpups meeting and on Wednesday the Lucky Potter Bees meet the Terriers.

J. Mess, Bullpups, and the Infirmary were winners over Sr. Firemen, Terriers and Boys Scouts respectively by scores of 28-17, 22-14, and 34-18 in the Bee League basketball.

- Boy Scouts-18 Infirmary-34
 2-G.Kihara f J.Migaki-10
 8-Y.Naruko f M.Okamura-2
 2-G.Shimizu c Morishita-6
 0-N.Suzuki g Yonekawa-6
 4-R.Ichikawa g J.Murata-0

- Scoring subs: B.S-B.Tanaka-2, Inf-M. Fukuzawa-8, B. Ishimoto-2.
J. Mess-28 Sr. Firemen-17
 12-H.Kondo f F.Itow-12
 6-Utsunomiyaf Mitsumori-0
 6-S.Mizukami c Kawamoto-2
 2-Mitsushitag K.Mine-3
 2-D.Kamon g Yamamoto-0

PING PONG NOW QUARTER FINALS

With the ping-pong tournament in full swing now, Tosh Goto in charge of the tourney, expects all the divisions to be in its quarter-finals today. A total of 107 names were entered in the first round. The men's singles had most with 53, man's doubles had 28, woman's singles 10, woman's doubles 6, and mixed doubles 10.

L.A. BULLDOGS CONQUER FOE

The L.A. Bulldogs emerged victorious against Guadalupe 8-4 in a game which dropped Guadalupe from the league running.

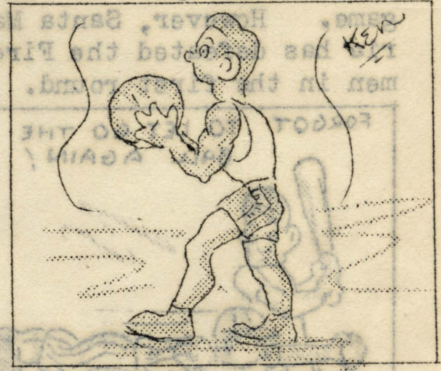
The most spectacular catch of the season was pulled by right fielder J. Tomocka of Guadalupe, who raced back against the barbed wire fence to pull down a possible four ply hit.

PASADENA FIVE TO ENCOUNTER LOMPOC QUINTET

In the Aye League basketball schedule, Pasadena shoots for its second win in two tries against Lompoc Monday at 10 a.m.

Led by Ken Mikuriya, Pasadena enters as heavy favorites.

Again in the following morning, Lompoc takes the court against the Lucky Potters. Wednesday, potent Oxnard encounter the scrappy Santa Maria quintet.



(O-W. Shibuya g T. Mayeda-2)

Highlighting the Aye League basketball, Oxnard defeated the L.A. Bulldogs 48-38 in the classiest case ever witnessed in this Center.

Previously the Bulldogs handily defeated Lompoc 48-18.

The Lucky Potters registered a surprise 19-15 win over Santa Maria.

- L.A. Bulldogs-38 Oxnard-48
 4-J. Amai f S. Inouye-10
 O-T. Nagayama f M. Tsuda-8
 5-C. Mayeda c T. Tsuda-1
 14-S. Goto g Y. Yamada-12
 13-T. Mayeda g Hashimoto-6
 Scoring subs; LAB-Furukawa-2, Oxnard-T. Sakamoto-11.

- Lompoc-18 LA Bulldogs-48
 4-T. Doi f J. Amai-8
 9-Sakanishi f T. Nagayama-8
 O-J. Miyake c C. Mayeda-15
 O-Takamoto g S. Goto-9
 Scoring subs; Lompoc-Inai-2, W. Inai-2, H. Hasegawa-1, LA Bulldogs-T. Watanabe-2, Y. Furukawa-2, R. Hiroto-2.

Lucky Potters-19S. Maria-15

- 6-F. Fujii f Hiratzuka-1
 O-J. Kawata f H. Sakaji-1
 4-Morishita c T. Kamon-4
 O-Y. Oishi g Y. Kikuchi-0
 O-Y. Kodama g S. Hagiya-2
 Scoring subs; L.P.-G. Mat-suura-2, C. Sugano-2, R. Ikeda-3, T. Murata-2, SM-H. Ota-1, Y. Kidota-2, P. Hagiya-4.