

E. F. Droop & Sons Co.

PIANOS MUSIC

STEINWAY AND OTHER LEADING PIANOS

ESTEY CHURCH AND CHAPEL ORGANS

RADIOS & RADIO-PHONOGRAPHS

RCA VICTOR RECORDS

SHEET MUSIC, BOOKS, MUSICAL INSTRUMENTS.



1300 G STREET, N.W.

AGENTS:
LEADING TRANS-ATLANTIC
STEAMSHIP LINES.

CAD

WASHINGTON, D.C.
5-4-1940

Miss Tomoye Nozawa,
784 Stanyan St.,
San Francisco, California.

Dear Miss Nozawa:

Your letter of March 26th was duly received, but unfortunately after I had given it to Mrs. Droop to read she misplaced the letter and I only found it again the other day and hasten to reply to you. It was indeed kind of you to send me such a lengthy epistle, and I enjoyed reading every line of it. It is good that this year you did not come to the Cherry Blossom Festival, for they were so long in coming out and the weather was extremely cold. There were many strangers in town, possibly 100,000, but many of them were also disappointed because nature was so far backward. At the present time we have very cold weather for this time of the year, in fact, this morning it was 48 degrees *S. time R* and it has not been much warmer during the day. Of course, when it once starts to get warm we have it good and strong, the heat sometimes going up to 95 and 100 degrees.

I wish you were living nearer Washington, for then I could help you in the ~~Select~~ of a Record Player. We have several of them, the Magnavox which sells at \$27.50, and the R. C. A. Victor, the price of which is \$8.88, and with it you get six selected records and a record rack. I think that you will really find this a satisfactory instrument, and would suggest that you either go to Sherman, Clay & Co. or some other first class house who represents the R.C.A. Victor, and I am sure they will give you a good demonstration. In fact, they may have special prices, due to being overstocked.

It will be a great pleasure for me to present you with one or two Red Seal Records, and if you will let me know just what you mostly desire, I will try to fulfill your wish.

I also heard from Mrs. Lathrop about the fruit, it was duly received. I do not know whether you know that Mrs. Lathrop had a fall, and broke her wrist and was in the hospital for sometime, for this reason she has had a friend attend to her correspondence.

If this old World would once again be quieted down, so that we would live in peace and happiness, it would be a great pleasure for me to travel more. I should love to see the Orient, but as

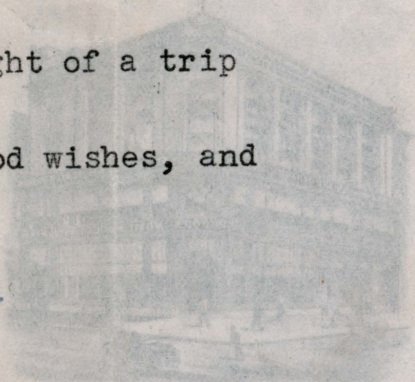
(over)

conditions are now, there is no possibility or thought of a trip of this kind.

Mrs. Droop joins me in sending you all good wishes, and with kindest regards, I remain,

Sincerely yours,

Carl A. A. Victor



ESTLEY CHURCH AND CHAPEL ORGANS
RCA VICTOR RECORDS

WASHINGTON D.C.
5-2-1940

CAD

LEADING TRANS ATLANTIC
STEAMSHIP LINES

1300 G STREET N.W.

Miss Tomoye Nozawa,
784 Stanton St.,
San Francisco, California.

Dear Miss Nozawa:

Your letter of March 26th was duly received but unfortunately after I had given it to Mrs. Droop to read she misplaced the letter and I only found it again the other day and hasten to reply to you. It was indeed kind of you to send me such a lengthy epistle, and I enjoyed reading every line of it. It is good that this year you did not come to the Cherry Blossom Festival, for they were so long in coming out and the weather was extremely cold. There were many strangers in town, possibly 100,000, but many of them were also disappointed because nature was so far behind. At the present time we have very cold weather for this time of the year, in fact, this morning it was 48 degrees and it has not been much warmer during the day. Of course, when it once starts to get warm we have it good and strong, the heat sometimes going up to 95 and 100 degrees.

I wish you were living nearer Washington, for then I could help you in the sale of a Record Player. We have several of them, the Magnavox which sells at \$27.50, and the R. C. A. Victor, the price of which is \$38.88, and with it you get six selected records and a record rack. I think that you will really find this a satisfactory instrument, and would suggest that you either go to Sherman, Clay & Co. or some other first class house who represents the R.C.A. Victor, and I am sure they will give you a good demonstration. In fact, they may have special prices, due to being overstocked.

It will be a great pleasure for me to present you with one or two Red Seal Records, and if you will let me know just what you mostly desire, I will try to fulfill your wish.

I also heard from Mrs. Lathrop about the fruit, it was duly received. I do not know whether you know that Mrs. Lathrop had a fall and broke her wrist and was in the hospital for sometime, for this reason she has had a friend attend to her correspondence. If this old world would once again be quieted down, so that we would live in peace and happiness, it would be a great pleasure for me to travel more. I should love to see the Orient, but as

(over)

RCA Victrola Model R-98 (Phonograph Only). 10 Watts Undistorted Push-pull Output; Feather-touch Crystal Pick-up; Top-loading Needle Socket with Automatic Needle Ejector; 8" Electro-Dynamic Speaker; 4-Point High-Frequency Tone Control and 2-Point Low-Frequency Tone Control. Completely Automatic Mercury On-Off Turntable Switch. Cabinet of heart walnut veneer. For tone and smooth volume, one of the finest record-playing instruments ever made by RCA Victor. H 14 $\frac{3}{8}$ ", W 19 $\frac{3}{4}$ ", D 14".

RCA Victrola R-60 (Phonograph Only). This instrument performs excellently its main purpose—High-quality record reproduction. Automatic Mercury-controlled Start and Stop Turntable; 3 RCA Victor Tubes; Self-starting Motor; Automatic Tone Compensation; 6" Electro-Dynamic Speaker. Smartly designed walnut finish cabinet. H 8 $\frac{1}{2}$ ", W 14", D 9 $\frac{3}{4}$ ".

RCA Victrola U-9. A handsome new table Victrola and 5-tube radio with Built-in Loop Antenna. Plays both 10" and 12" records with lid down; Self-starting Motor; 2-Point High-Frequency Tone Control; Viscaloïd Damped Pick-up. Radio has powerful Superheterodyne Circuit; standard reception, plus 1 Police band; 13-to-1 Tuning Ratio; Edge-lighted Dial. Amazingly low in price. H 10 $\frac{15}{16}$ ", W 17 $\frac{1}{16}$ ", D 13 $\frac{5}{8}$ ".

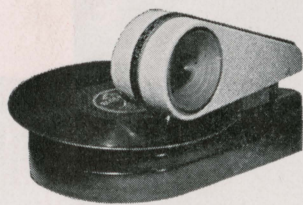
RCA Victrola U-10. Victrola and Superheterodyne radio with Push-button Tuning on 6 stations; standard reception and 1 Police band. "Plug-in" Connection for Television Attachment; Television Attachment Switch. Victrola portion has Self-starting Motor; new Viscaloïd Damped Pick-up; 3-Point Bass and Treble Tone Control; 10" Turntable. H 11 $\frac{5}{16}$ ", W 15 $\frac{1}{4}$ ", D 13 $\frac{1}{8}$ ".

RCA Victrola U-12. A 7-tube table radio and Victrola with Self-starting Motor; new Viscaloïd Damped Pick-up; Push-button Tuning; 6" Dynamic Speaker; Edge-lighted Dial; American and foreign reception. Tuning range: 540-1720, 5800-18,000 kcs. "Plug-in" and Switch for Television Attachment. Beautiful two-toned cabinet. H 12 $\frac{1}{2}$ ", W 19 $\frac{1}{2}$ ", D 13 $\frac{3}{16}$ ".

E.F. DROOP & SONS CO.
1300 G Street, N.W.
WASHINGTON, D.C.



RCA Victor Record Player R-100. Turns any modern AC radio into an electrical phonograph. Plays 10" or 12" records. Has Improved Feather-touch Pick-up; new, molded, True-tracking Tone Arm; On-Off Switch combined with Volume Control conveniently located on side of cabinet. Constant-speed Synchronous Motor rotates the turntable at the twirl of a finger. For best operation, place some distance from radio.

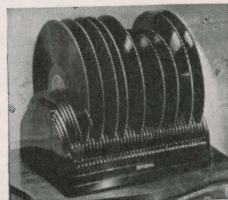


◀ **RCA Victrola Junior.** A new Victrola designed and built specially for children. Can be safely operated by the smallest child. Ideal for reproducing children's records. Has cone speaker built into tone arm itself and reproduces records with surprisingly good tone. Plays 6-, 8-, 10- and 12-inch records; uses standard needles; has genuine Synchronous Electric Motor—no tedious winding. Sturdy, molded plastic cabinet in streamlined "teardrop" design, and is same size as the RCA Victor R-100 Record Player. Ideal for giving the younger children the music they want when they want it. Red-and-black in color.



RCA Victor Record Player R93-F. Housed in a handsome, molded plastic cabinet, this compact instrument transforms any modern AC radio into an electric phonograph. Plays 10" or 12" records with a volume and tone like the radio to which it may be attached. Improved Feather-touch Crystal Pick-up rides in a light, molded plastic True-tracking Tone Arm; has combined Volume and On-Off Switch; Constant-speed Synchronous Motor for 110-v. AC.

E.F. DROOP & SONS CO.
1300 G Street, N.W.
WASHINGTON, D.C.

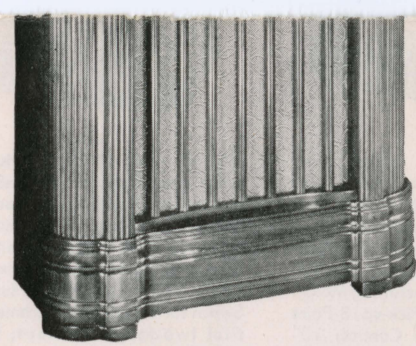


RCA Victor
READY-RECORD RACK . . RR-5

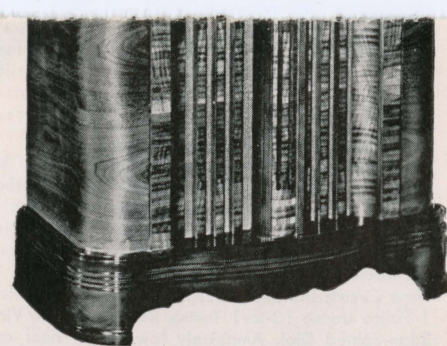
Indispensable to the large or to the small record library. Keeps 40 assorted 10" or 12" records safely upright ready for use. Molded plastic with sponge rubber record rests.

▶ **RCA Victor Wireless Record Player VA-20.** ▶
Play Victor records through your radio with this new RCA Victor VA-20 Wireless Record Player from 30 to 50 feet away, without any connection between it and your radio whatsoever. Handsome plastic cabinet. Has Pilot Light; RCA Victor Constant-speed Synchronous Motor; Feather-touch Crystal Pick-up; On-Off Switch; Volume (modulation) Control.
VA-21. Identical to VA-20 but with tone arm like the R-100.

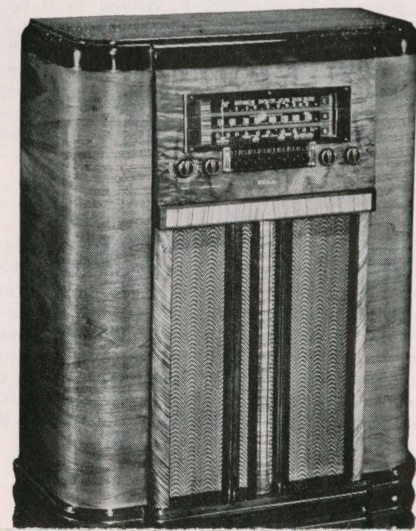




RCA Victor K-105. Glorious 9-tube console, plus Magic Eye. 3 Tuning Bands for American, foreign reception, plus Police, Aviation and Amateur calls. For maximum performance has Stage of Tuned Radio Frequency and 3-Gang Condenser; New Tenna Vane Control Knob enables you to adjust Built-in Loop Antenna to peak performance; Push-button Tuning (8 stations); Powerful Push-pull Audio System; "Plug-in," plus Instrument Panel Switch for Victrola or Television Attachment; 12" Electro-Dynamic Speaker; 18-to-1 Tuning Ratio. H 43", W 30 1/2", D 15 5/16".



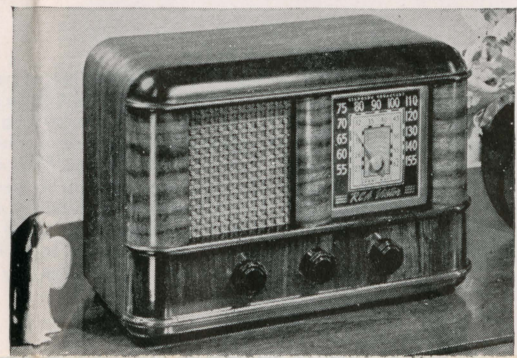
RCA Victor K-130. An aristocrat in appearance, brilliant in performance, supreme in value—this beautiful RCA Victor Console K-130 contains 11 RCA Victor Tubes, plus Magic Eye. The 3 broadcast bands cover American and foreign reception, plus Police, Aviation and Amateur calls. Has Stage of Tuned Radio Frequency for maximum performance. RCA Victor Electric Tuning (9 stations); 12" Electro-Dynamic Speaker with Sound Diffuser; Powerful Parallel Push-pull Audio System; Built-in Loop Antenna with exclusive RCA Victor Tenna Vane Control Knob for adjusting Built-in Loop Antenna to peak performance. "Plug-in," plus Instrument Panel Switch for Television and Victrola Attachments. H 44", W 32 3/8", D 17".



Victrola U-44, plus a Plug-in Ballast Resistor, provides 7-tube performance. Extra-large, Built-in Magic Loop Antenna; American and foreign reception; 5" Permanent Magnet Dynamic Speaker; "Frequency-locking" Magnetite Core I-F Transformers for permanent alignment; Music and Speech Tone Control; Large, Easy-reading, Clock-type Dial in 4 harmonizing colors; Pentode Beam Power Output; AC-DC Operation and Underwriters' Approval. The beautiful cabinet is constructed of rare and hand-polished woods. H 10 1/4", W 16", D 7 3/8".



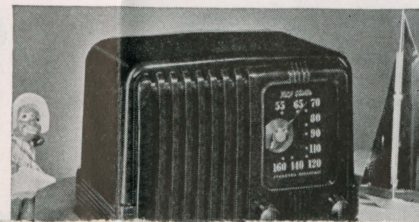
RCA Victor 45X-13. Cabinet of impressive simplicity. Remarkable tone and performance. Extra-large, Built-in Magic Loop Antenna (no ground required); Big, Easy-reading, Multicolored, Clock-type Dial; 5 New, Low-drain RCA Victor Tubes (7-tube performance); standard broadcast and Police reception; 5" Electro-Dynamic Speaker; Pentode Beam Power Output. Carefully constructed of fine woods and veneers. AC-DC Operation. H 8 1/8", W 13 1/8", D 6 5/16".



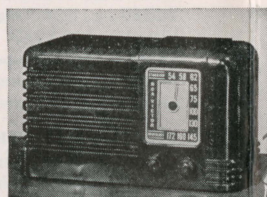
Low-drain RCA Victor Tubes (7-tube performance). Extra-large, Built-in Loop Antenna; American and foreign reception; 5" Permanent Magnet Dynamic Speaker gives Extra Volume and Superb Tone; "Frequency-locking" Magnetite Core I-F Transformers for permanent alignment; Large, Colorful Dial; Pentode Beam Power Output; AC-DC Operation; Underwriters' Approval; Music-Speech Tone Control on standard broadcasts. Cabinet of rich walnut plastic. H 8", W 12", D 7".



RCA Victor 46X-11. Beautiful cabinet molded of rich mahogany plastic with easy-grip plastic knobs and composition back to match; 7-tube performance; standard broadcast, Police, Amateur, Aviation, plus Foreign Short Wave; Music and Speech Bass Compensation Tone Control; Extra-large, Built-in Magic Loop Antenna; Big, Easy-reading, Multicolored, Clock-type Dial; 5 Low-drain RCA Victor Tubes, plus Plug-in Ballast Resistor; AC-DC Operation; Underwriters' Approval. H 8", W 12", D 7".



presents an appearance that goes well in any surroundings. A 5" Permanent Magnet Dynamic Speaker gives extra volume and superb tone. Magnetite Core I-F Transformers keep the set in permanent alignment; the new "Roto-Base" secures maximum efficiency from the Built-in Magic Loop Antenna; 5 New, Low-drain RCA Victor Tubes (7-tube performance); American and foreign reception with Music-Speech Tone Control on standard broadcasts; Pentode Beam Power Output; Supersensitive Automatic Volume Control; Large, Easy-reading, Clock-type Dial in 4 harmonizing colors; Antenna Connection for weak signal areas—no ground connection required; AC-DC Operation; Underwriters' Approval. H 9 1/4", W 14", D 7 1/16".



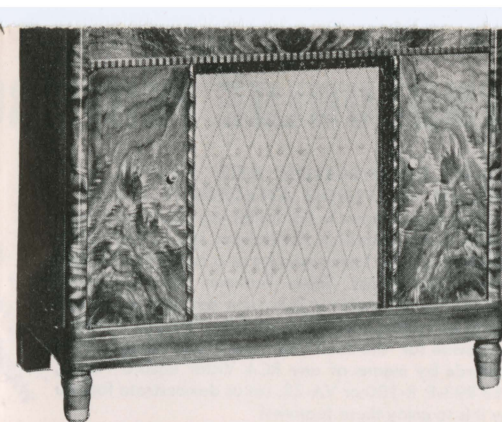
RCA Victor 45X-1. Brilliant in performance, this new Little Nipper is ideal for any room in the home. Has large, 3-color, Edge-lighted Dial; "Hank" Antenna attached (no ground required); domestic broadcast and 1 Police band; 5 New, Low-drain RCA Victor Tubes with 7-tube performance. Sensitive Electro-Dynamic Speaker. Molded of rich mahogany plastic, with smooth finish composition back cover to match. AC-DC Operation. H 5", W 8 1/2", D 4 1/4".



RCA Victor 45X-12. Extra-large, Built-in Magic Loop Antenna (no ground required); 5 New, Low-drain RCA Victor Tubes (7-tube performance); Large, Easy-reading, Multicolored, Clock-type Dial; "Frequency-locking" Magnetite Core I-F Transformers for permanent alignment; standard broadcast and Police reception; Pentode Beam power Output; Sensitive 5" Electro-Dynamic Speaker. Cabinet molded of rich, Antique Ivory plastic with big, easy-



RCA Victrola U-45. Stands among the finest RCA Victor instruments designed in 40 years of cabinetry craftsmanship. Stage of Tuned Radio Frequency; Gentle-action, Automatic Record-changer (10" or 12" records); Powerful Push-pull Audio System with 12 watts output; a Record Shelf and Record Storage Space in cabinet. Radio is complete with 9 RCA Victor Tubes, plus Magic Eye; Built-in, Shielded, Rotatable Magic Loop Antenna; 12" Electro-Dynamic Speaker with Sound Diffuser, and 3 Tuning Bands for American and foreign reception. Cabinet constructed of finest solid walnut and matched walnut and orientalwood veneers, both inside and out. H 42 1/4", W 25 1/4", D 18 1/4".



RCA Victrola U-44. Has newly styled Automatic Record-changer for 10" and 12" records; Powerful Push-pull Audio System; Push-button Tuning (6 stations); 3 Tuning Bands for American and foreign reception, plus Police, Aviation and Amateur calls; 12" Electro-Dynamic Speaker with Sound Diffuser; Record Storage Compartment; Stage of Tuned Radio Frequency; 9 RCA Victor Tubes, plus Magic Eye; Built-in Loop Antenna; High-Low Tone Control; Automatic Tone Compensation. Cabinet is a brilliant adaptation of an 18th Century regency style. Divided lid of heart walnut veneer for extra convenience. Also available in mahogany. H 34", W 35 5/16", D 16 5/8".



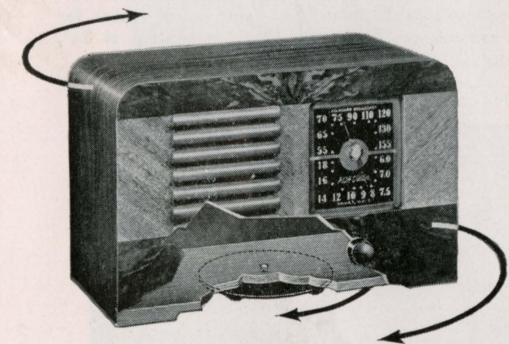
EXTRA-VALUE FEATURES IN 1940 *RCA Victor* RADIOS AND VICTROLAS

"PLUG-IN" CONNECTION AND SWITCH FOR VICTROLA OR TELEVISION ATTACHMENT...

Most of the power-line radios shown in this folder are designed for use with an RCA Victor Television Attachment. Most 1940 instruments with Push-button Tuning also have a switch for Victrola or Television Attachment. These features offer protection against obsolescence wherever Television becomes available. Furthermore, on radios, the Switch and the "Plug-in" Connection also provide for "the music you want when you want it" on Victor Records by means of any RCA Victor Record Player, such as the R93-F, R-100 or VA-22. Let us demonstrate for you how easy it is to enjoy these features!

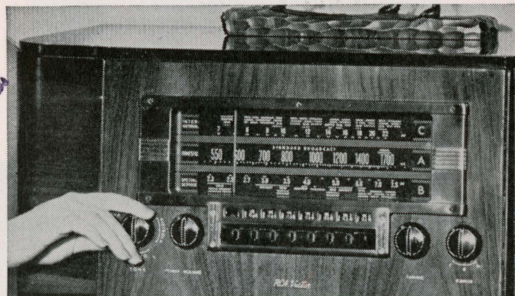
PUSH-BUTTON TUNING . . . "Push a Button . . . There's Your Station!" The simplest, most practical type of tuning . . . easiest to set up, and at prices within the reach of all!

ELECTRIC TUNING . . . Instantaneous, automatic; combines benefits of Push-button Tuning with even greater precision and ease.



Above—"ROTO-BASE" is a new, exclusive RCA Victor feature which makes it possible to rotate the radio in any direction for convenience of tuning and for obtaining "peak" efficiency from the Loop Antenna. No getting out of your easy chair to change program—just swing the set around—select the station—then rotate it to the point of best reception.

PICK-UP & SOUND CO.
1500 G Street, N.W.
WASHINGTON, D.C.



NEW DIALS . . . Improved, Clear-vision, Horizontal Dial with separate easy-to-read scales for popular international entertainment bands. New, improved, Straight-line Dial . . . visible from every angle . . . easy to read and easy to use.

FOREIGN RECEPTION . . . RCA Victor is notable for the large number of instruments—even in the lowest price brackets—containing the "C" band for European and foreign reception.

MAGIC EYE . . . Most accurate known method of manual tuning. Makes silent tuning possible.

ECONOMY BLINKER . . . A new type of Automatic On-Off Warning Indicator for battery-operated set, which enables set-owner to save the life of the batteries.

THREE-WAY OPERATION . . . A new feature in RCA Victor "Pick-Me-Up" battery models which enables owner to save battery power by plugging into AC or DC house current whenever available.

MAGNETITE "FREQUENCY-LOCKING" TRANSFORMERS . . . RCA Victor factory adjustments keep radio frequency circuits locked in alignment; a feature as valuable as a "permanent" tuning would be to a piano.

PUSH-PULL OUTPUT . . . A quality feature which makes possible greatly increased output.

GENTLE-ACTION, AUTOMATIC RECORD-CHANGER . . . For greatest convenience in playing records.

NEW RCA VICTOR PREFERRED TUBES . . . RCA Victor Radios and Victrolas for 1940 include RCA Victor Preferred Type Tubes . . . finest ever designed for tone, sensitivity and efficiency.



TENNA VANE CONTROL . . . Control knob which enables you to instantly adjust Built-in Magic Loop Antenna to station for peak performance.

THE RCA VICTOR MASTER ANTENNA . . . Provides the ultimate in noise-free reception.

BUILT-IN MAGIC LOOP ANTENNA . . . A built-in antenna which eliminates necessity for any external antenna or ground wires. Carefully balanced to provide efficient reception.

DISTANCE BOOSTER ANTENNA CONNECTION . . . Enables listener to increase reception range on radios.

SUPERIOR CABINETS . . . Exquisite 18th Century and 20th Century cabinets wrought to blend with modern homes . . . the product of forty years of fine craftsmanship. Brilliant new types of Little Nipper plastic and wood cabinets.

RCA ALL THE WAY . . . Only RCA does and makes everything in radio. That's why RCA ALL THE WAY stands as a guarantee of extra value and extra enjoyment in an RCA Victor instrument.

LOOK FOR THE TRADE MARK . . . These trade marks stand for high quality all over the world. The apparatus shown herein is licensed under patents only for Radio Broadcast Reception, and for certain other uses as set forth in the License Notice on the apparatus itself. Trade marks: "Magic Brain," "Magic Eye," "Magic Voice," "Electrola," "Victrola," "Powertron," "Victor." Reg. U. S. Pat. Off. by RCA Mfg. Co., Inc.



RETURN AFTER 5 DAYS TO

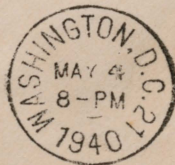
E. F. DROOP & SONS Co.

STEINWAY PIANOS

VICTROLAS

1300 G. St. N. W.

WASHINGTON, D. C.



NOTIFY
YOUR
CORRESPONDENTS
OF CHANGE
OF ADDRESS



Miss Tomoye Nozawa,

784 Stanyan St.,

San Francisco,

California.