

SPIEGEL

CHICAGO, ILLINOIS

We can furnish only the coat, #30FW210, with a zip-out lining, as shown on the enclosed page from our 1942 Fall and Winter catalog and you may order from this page.

Enc:C.P.

Dear Customer.

Thank you for your letter. Read our reply in the enclosed paragraphs. We are using this method of correspondence to save time for you and for us—to give you essential information about your dealings here quickly, concisely, accurately.

You may find it convenient to use the unprinted sides of this folder when writing to us. Always be sure to sign your complete name and address to all your letters.



IT'S SO EASY TO BUY SHOES BY MAIL ORDER

1—Detach War Ration Stamp No. 17 from your War Ration Book No. 1 (Sugar and Coffee), and pin to your order one stamp for each pair of rationed shoes you order.

2—Don't send your War Ration Book. Under a special ruling for mail orders, you can now detach War Ration Stamp No. 17 when you order rationed shoes by mail order.

3—Each War Ration Stamp No. 17 permits purchase of a pair of rationed shoes between February 9 and June 15, 1943.

4—War Ration Stamp No. 17 can be transferred among members of the same family living in the same household.

For example, a parent can use his own stamp in the purchase of shoes for a child.

5—If you do not have a War Ration Book No. 1 for each member of your household, or need more shoes than you have stamps for, see your local rationing board.

6—If you should decide to return shoes you buy, a Special Shoe Stamp which may be used instead of Ration Stamp 17 will be returned to you. This also holds true if for any reason your shoe order cannot be filled. You may return shoes for exchange in usual way—no ration stamp required.

IMPORTANT

Many Shoes Can Now Be Bought Without Ration Stamp (See Other Side)

FOR EVERY PAIR OF RATIONED SHOES YOU BUY...

PIN A WAR RATION STAMP NO. 17 TO YOUR ORDER BLANK

A special ruling for mail orders allows you to detach War Ration Stamp No. 17 from War Ration Book No. 1 and pin it to your mail order for rationed shoes. Disregard the printed line on your ration book which says stamp must not be de-

tached—the U. S. Government now authorizes you to detach War Ration Stamp No. 17, when ordering rationed shoes by mail. DO NOT SEND us your War Ration Book.

MORE SHOES CAN NOW BE BOUGHT WITHOUT A RATION STAMP

CASUAL PLAY SHOES AND SANDALS (For Women and Girls)

- Page 143...Cat. No. 10GY 9000-01-02-03
10GY 9004-05-06-07
Page 145...Cat. No. 10GY 9077-78-79
10GY 9084-85-86-87
10GY 9088-89-90-91-92-93-94
Page 151...Cat. No. 10GY 9224-25-26-27
Page 152...Cat. No. 10GY 9246-47-48-49-50
Page 162...Cat. No. 10GY 9498-99
Page 163...Cat. No. 10GY 9603-04-05-06
10GY 9614-15-16-17

MEXICAN HUARACHES (Women's)

- Page 142...Cat. No. 10GY 9026-27

CASUAL SHOES (For Men and Boys)

- Page 176...Cat. No. 11GM 2060-61-62.

HOUSE SLIPPERS (For Women)

- Page 148...Cat. No. 10GY 9135-40-41
10GY 9142 to 10GY 9161 (inclusive)

HOUSE SLIPPERS (For Men)

- Page 176...Cat. No. 11GM 2072 to 11GM 2077 (inclusive)
11GM 2082-83-84-85
11GM 2088-89-90-91
Page 221...Cat. No. 11GM 2096-97

WOODEN CLOGS (For Men)

- Page 221...Cat. No. 11GM 2095

BABY SHOES

- Page 129...All Shoes in Sizes: 0, 1, 2, 3, and 4.
Page 160...Cat. No. 10GY 9500 to 10GY 9518 (inclusive)
in Size 4 only.
Page 160...Cat. No. 10GY 9519 to 10GY 9534 (inclusive)
in Sizes: 2, 2½, 3, 3½, 4.
Page 161...Cat. No. 10GY 9535 to 9568 (inclusive)
in Sizes 2, 2½, 3, 3½, 4.
10GY 9569 to 10GY 9583 (inclusive)
in Sizes: 1, 1½, 2, 2½, 3, 3½, 4.
10GY 9585 to 10GY 9592 (inclusive)
in Sizes: 2, 2½, 3, 3½, 4.

ARCTICS (Men's and Boys')

- Page 182...Cat. No. 11GM 2387-88-89

GAITERS AND GALOSHES (Women's)

- Page 148...Cat. No. 10GY 9136-37-38-39

RUBBERS (Men's and Boys')

- Page 182...Cat. No. 11GM 2390-91-93-94-95-96-97-98

ROLLER SKATING SHOES (ON SKATES)

- Page 389...Cat. No. 44GG 3190-91-92-93

SPECIAL NEW DEPARTMENT TO HANDLE YOUR RATION ORDERS

A special department has been created to guarantee fast, accurate handling of your ration orders. The Spiegel workers who fill your ration orders are efficient and thoroughly experi-

enced. They have been specially trained in the handling of rationed and restricted merchandise. All you have to do is follow the simple instructions on other side of this sheet.

CHICAGO **SPIEGEL** ILLINOIS

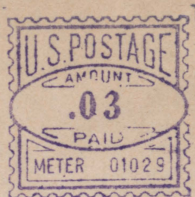
7370-A

RETURN IN TEN DAYS TO

SPIEGEL

1061-1101 WEST 35TH ST.

CHICAGO, ILL.



Mrs. T. N. Takahashi 97
11-6-F
Topaz, Utah