

GEORGE PARK SCHULTZ • ARCHITECT

182 MELROSE AVENUE

YOUNGSTOWN, OHIO

ST 2-3006

September 27, 1957

Takahashi Trading Company
1661 Post Street
San Francisco, California

Gentlemen:

Please send me information, including prices,
on tatami mats.

I am also interested in Japanese screens, place
mats, pottery, etc. If you have information
regarding these, please send it to me.

Sincerely,

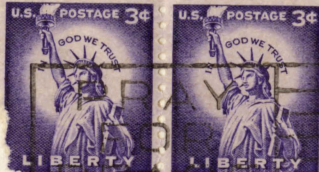
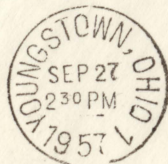
George Schultz
(als)

George P. Schultz

GPS:als

*Brochure
+
screen brochure*

George P. Schultz / Architect
182 Melrose Avenue
Youngstown 12, Ohio



MISSENT TO HONOLULU, HAWAII

AIR MAIL

Takahashi Trading Company

1661 Post Street

San Francisco, California

HONOLULU
SEP 29
10AM
1957
HAWAII

