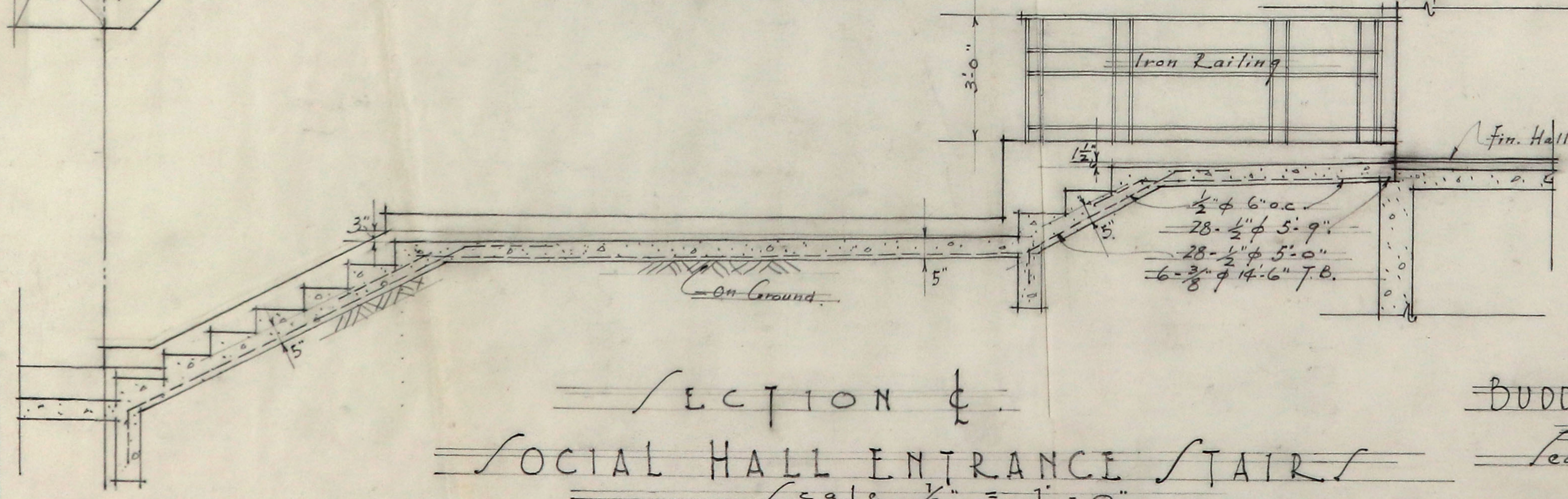


EXISTING  
SIDEWALK  
GRADE

27'-5"  
PLAN

6" Iirers  
12" Tread

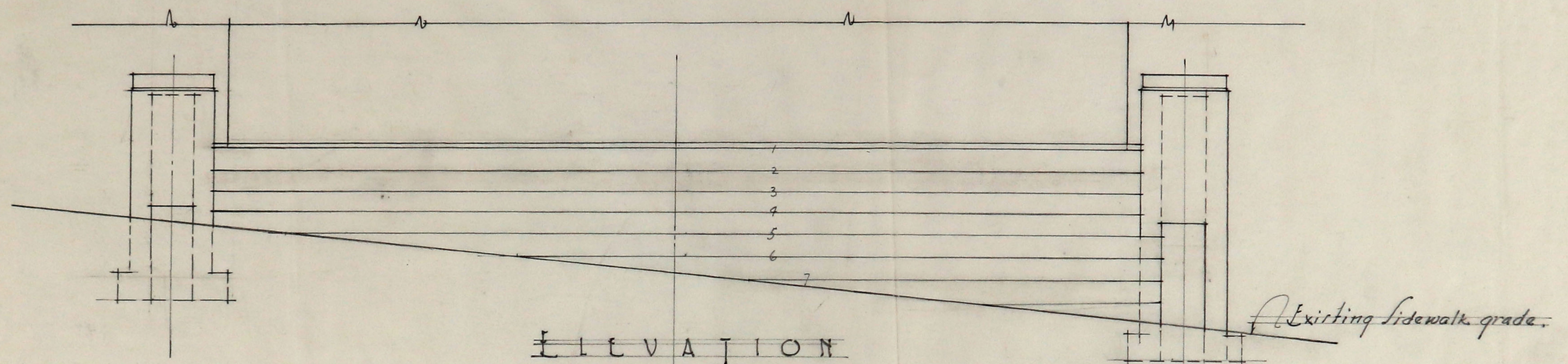
$f_s = 16000 \#$   
 $f_c = 560 \#$



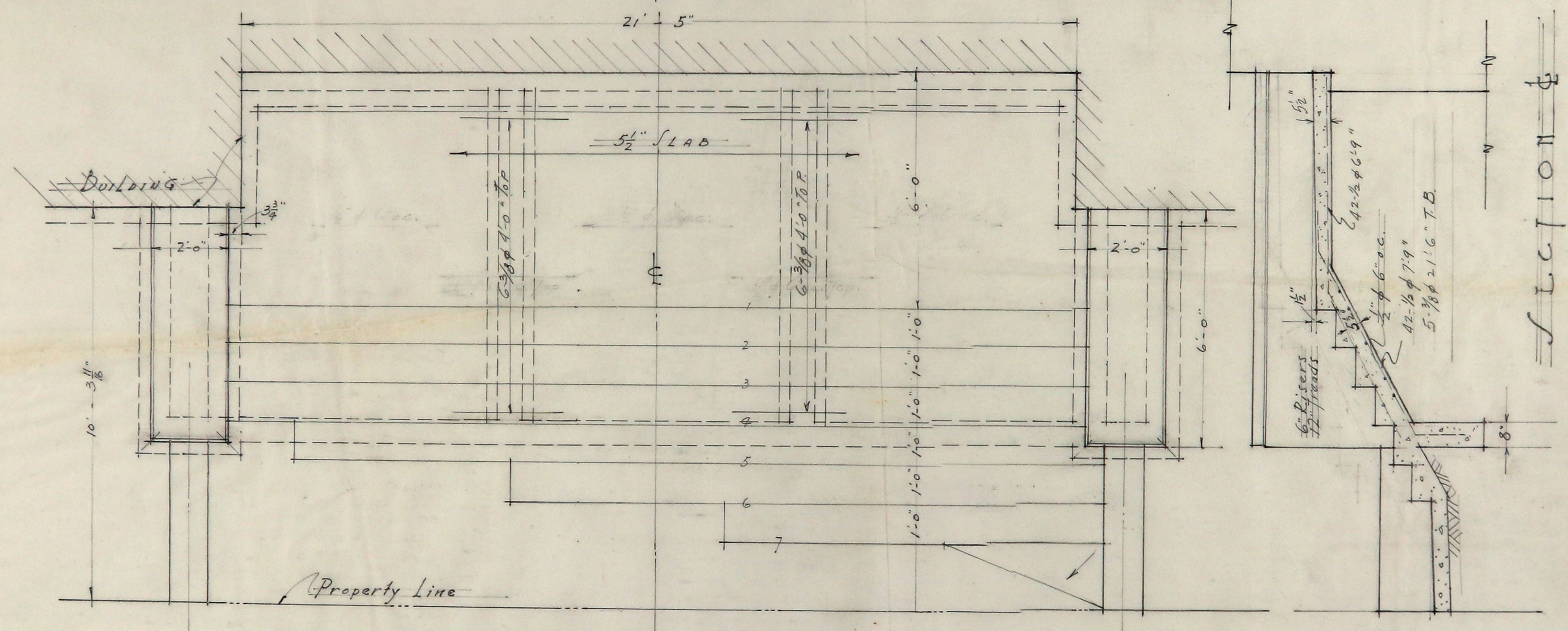
SECTION  
SOCIAL HALL ENTRANCE STAIR  
Scale  $\frac{1}{2}'' = 1'-0''$

BUDDHIST MISSION SOCIETY  
1427 - MAIN ST.  
Seattle, Wash. July 29, 1941.

HARRY R. POWELL STRUCTURAL ENGINEER



ELEVATION



PLAN

CHURCH ENTRANCE STAIRS  
Scale  $\frac{1}{2}'' = 1'-0''$

$f_s = 16000 \#$   
 $f_c = 560 \#$

BUDDHIST MISSION SOCIETY  
427 MAIN ST  
Seattle, Wash. July 29, 1941.

HARRY R. POWELL STRUCTURAL ENGINEER