

ASIAN STUDENTS UNITE!



VOL. 4 NO. 2

The Newsletter of the Berkeley ASU

DEC. '75

Boalt Struggle Continues...

Asian students at Boalt Law School are once again involved in a struggle for special admissions for Asian students. The issues facing them are basically the same issues that special admissions for Third World students have always faced.

In April 1972, TW students at Boalt went out on strike against proposed cutbacks in special admissions. The issues that were raised included:

1. the right to quality education, the right for TW law students to serve their communities, and the right to participate in the selection process for special admissions.
2. that the GPA's and Law School Aptitude Test (LSAT), a major admissions criteria, were invalid in determining law school performance and community orientation.
3. the demands for guaranteed admissions and representative TW faculty/administration.

Why are the issues in 1972 important? Three years later, in May 1975, the Asian American Law Students Assn. received notice that the exclusion of Japanese and Chinese from minority admissions would be considered this fall. This is another attack on special admissions of TW students, but has taken the form of exclusion. Boalt administration contends that Asian students are sufficiently admitted under regular admissions. Asian Law Student's research of the LSAT as a major factor in admissions criteria reveal that there is no actual correlation of the LSAT to law school performance but a definite correspondence to family income level of the student. Asian law students are thus proposing that:

1. the present overreliance on the LSAT and other numerical standards as admissions criteria be terminated
2. an applicants proven ability, competence, and commitment to serve the interests of disadvantaged and poor Asian communities must be recognized as a legitimate consideration in the admissions process
3. meaningful student participation in the admissions process must be permitted to insure the special admissions program.



How does this situation affect Asians in the communities? The present conditions in our communities lack sufficient health, educational and legal rights, etc. As Asian students, we must have the right to serve our communities in these areas and to direct our education toward community needs.

Why should we, as Asian students be concerned about the special admissions at Boalt? It affects those intending to go to law school and the quality of education there, as well as the chances to enter law school and to practice within our communities. It also affects the withdrawal and elimination of educational rights won by Asian and Third World students. The exclusion of Chinese and Japanese from special admissions would be the beginning of attacks on all Third World students' special admissions in all law schools. Continuous pressure on Asian Studies and Ethnic Studies, particularly in receiving credit for classes, is a similar disregard for the interests of Third World people. This entire issue is part of the continuing cutbacks on all Asian and Third World people.

In supporting the struggles of the Asian law students, we are not supporting the rights just to have more Asian law students. More law students do not guarantee more Asian community lawyers. The commitment to serve the community must be a commitment to change this society, and these qualities cannot be determined by numerical quota systems or admissions criteria. Within our educational system and throughout society, Third World people should have the right to make the interests of our communities a priority for our focus in education. We must first have the ability to choose our educational direction before we can deal with the means and the rights to serve our communities.

(cont. on Pg. 3)

ASIAN STUDENTS UNITE !
505 Eshleman Hall
Univ. of California
Berkeley, Calif. 94720

Nonprofit Org.
U.S. Postage
PAID
Berkeley, Calif.
Permit No. 3

Time value
Address correction
requested

WHY JOIN THE ASU?

'FORUM' IS AN OUTLET FOR ASIAN STUDENTS TO AIR THEIR OPINIONS ON THE ASU AND ISSUES RELEVANT TO ASIAN STUDENTS. WE ENCOURAGE PEOPLE TO SUBMIT LETTERS AND ARTICLES TO 'ASIAN STUDENT UNITE! SHARE YOUR IDEAS IN FORUM!'

Many people have exchanged ideas with the ASU on building the organization into an effective center for Asian student interests and activities. Especially during the past few weeks, many students have come into contact with the ASU through our orientation program. We had informal discussions in the dorms, a formal orientation meeting, published a general orientation newsletter, leafleted in Sproul, opened a student lounge, and threw a party. After establishing this initial contact, many interested students began to investigate and became involved in ASU's organizational direction; that is,

- 1) Uniting Asian students to meet each other and exchange ideas,
- 2) Deepening our understanding of Asian American history, struggles and identity, and
- 3) Organizing around the struggles of Asian and Third World peoples

However, though we have presented our organizational direction, many students, while sympathizing with this direction, still show no interest in the ASU. Some of the reasons expressed by these people are:

"ASU? That's just a clique on the fifth floor of Ehleman."

"I don't know what they're up to."

"Don't have any time, got to study."

"They don't do anything!"

"All they do is talk politics."

"All they do is party."

We are now addressing ourselves to these drawbacks and other problems of student life so that the ASU can unite all Asian students.

The ASU is based and developed through the efforts of interested Asian students. In our outreach and expansion we try to involve broad sectors of the Asian students body by;

- 1) Distributing our newsletter which informs students of issues and developments concerning the ASU.
- 2) Presenting campus forums on topics which affect Asian students.
- 3) Organizing caucuses within Asian Studies to meet the educational needs of Asian students.

These programs are responsive to people who say that they don't know anything politically or that they don't know what ASU is up to.

Since there is a lack of unity among Asian students on campus there is a lack of a strong sense of Asian identity. In order to overcome this fragmentation and promote the development of Asian relations we; 1) Opened a lounge where people can relax, study, and get to know each other. 2) Throws parties and dances. In this way, ASU is open and all Asian students can establish relations no matter how much time they have.

Much of the Asian student body thinks that politics is unimportant in their lives. In order to make political ideas more meaningful, we have the following specific programs;

- 1) General meetings, in which we discuss the development of the political activities of the ASU and try to better understand the ways in which our concrete work fits into our goals of dealing with the oppression that we face as Asians.
- 2) Study group, where we further our political understanding through reading and discussion, e.g. we are currently planning a study group on the Asian student movement, and its role in the overall movement for social change.
- 3) Woman's Caucus, which helps understand and actively build the role of women in the movement.

These programs help to realize political concepts in the lives of Asian students. This integrating of politics and our daily lives into a political world outlook is an ongoing process within the ASU. This process attempts to overcome the problem of the ASU being "too political" or "too social".

It is obvious that many of the work areas of the ASU are directed towards the process of uniting all Asian students to build a strong Asian identity and to actively involve Asian students in the struggles of Asian and Third World peoples for our democratic rights. Commitment to this process is synonymous with commitment to the ASU; that is, agreement with the principles of unity:

- 1) Strive to meet the political social cultural needs of Asian students.
- 2) Expose and carry on work against racism and inequality.
- 3) Defend and build the educational rights of Asian students.
- 4) Establish communications and build relations between Asian people on and off campus.
- 5) Work with and support progressive struggles, particularly those of Third World peoples.
- 6) Strive to involve Asian students in the broad movement for social change.

and commitment to build the organization to effectively carry out these principles. The role of the ASU in this process is simply that of an organizing focus for the broad movement of Asian students for social change. Therefore the ASU cannot be judged in comparison with what it should "ideally" be, because the problems confronting us are considerable, and the effectiveness of the organization in dealing with these problems is based upon the commitment of all Asian students to making change. Hence, the ASU cannot be judged solely on "What good has it done?" but upon its guiding principles and direction as well.

As increasing numbers of students are supporting these goals, the ASU is becoming a stronger uniting force among Asian students on campus. We must all unite and intensify our efforts to achieve our rights!



Some Asian Restaurants In Berkeley:



JAPANESE & KOREAN STYLE

*EAST WEST RESTAURANT

1267 University 845-9551
vegetable cuisine, fried veg.
won tons, tempura, veg. curry
Th-Sun 6-9:30

*EDOKKO RESTAURANT

2215 San Pablo Ave. 845-9505
Japanese food.
11:30-2, 5-9 Closed Mondays

*KOREAN INN

1339 Gilman 524-7732
Lunch 12-2 dinner 5-9
Korean cooking school Tu 7-9PM
233-0755

*TORAYA

1695 Solano Ave. 524-7000
Tu-Th 11:30-2:30 Fri, Sat 11:30-
4:30-9:30 10PM
Sun 11:30-9:30 closed Mondays
Japanese cuisine

*YOSHI'S JAPANESE RESTAURANT

2505 Hearst 848-3499
Mon-Th 5-9, Fri& Sat 5-9:30
closed Sundays

MANDARIN STYLE

*FU LU SHOU

2115 Kittredge 548-7544
M-F lunch 11:30-3 Sat&Sun 5-9:30
dinner 5-9:30

*HUO KUO HOUSE

2083 Vine 8490808
Mon-sat 11:30-3& 5-10
Sun 5-10

*KING TU RESTAURANT

1335 Solano Ave. 525-2285
M,T,Th 11-10
F,S 11-11
Sun 4-10

*KING YEN MANDARIN CHINESE CUISINE

2984 College 845-1286
lunch 11:30-3, dinner 5-9:30
no lunch Sat & Sun
closed Wednesdays

*KIM SAN RESTAURANT

1459 Univer. 843-3966
Peking style/ some Korean food
Mon-Sat 11:30-9:30, Sun 4-9:30

*KING TSIN RESTAURANT

1699 Solano 5259890
Mandarin style
11-2:30 lunch, 4:30-9:30 dinner
closed Tuesdays

*LIN'S RESTAURANT

2071 University 845-1456
11:30-9:30 Closed wednesdays

*PEKING RESTAURANT

2429 Shattuck 848-5421
11:30-9:30 Closed Mondays

*SINO PALACE

2486 Channing Way 548-7077
11:30-9:30PM

*YANGTZE RIVER RESTAURANT

1668 Shattuck 548-2327
M-F 11:30-10
Sat&Sun 10:30-10

*YENCHING RESTAURANT

2017 Shattuck 848-2200
Mon-Sat 11:30-9:30
Sun 4:30-9:30

CANTONESE STYLE

*CHINA KITCHEN

1025 University 848-2965
Serves Cantonese food,
Japanese food if you want

*CHOW TAN DINING ROOM

2811 Telegraph Ave. 841-6806

*COLLEGE INN CHINESE KITCHEN

2965 College Ave. 843-9239

*DYNASTY

1841 Euclid 841-8363
Tu-Sun 11:30-9:30

*JADE PAGODA

1923 University 843-1535
Tu-Fri 1130-10PM
Sat&Sun 12-10 closed Mondays

*MING'S CHINESE KITCHEN

1761 Alcatraz 653-5866
delivery service 5-9pm
Mon-Sat 11-9pm closed Sundays

*TUNG YUEN RESTAURANT

2506 Telegraph 845-5864
11:30-9PM closed Wednesdays

*WING KONG'S

2005 Shattuck 843-7464

BOALT STRUGGLE CONTINUES... (from Pg. 1)

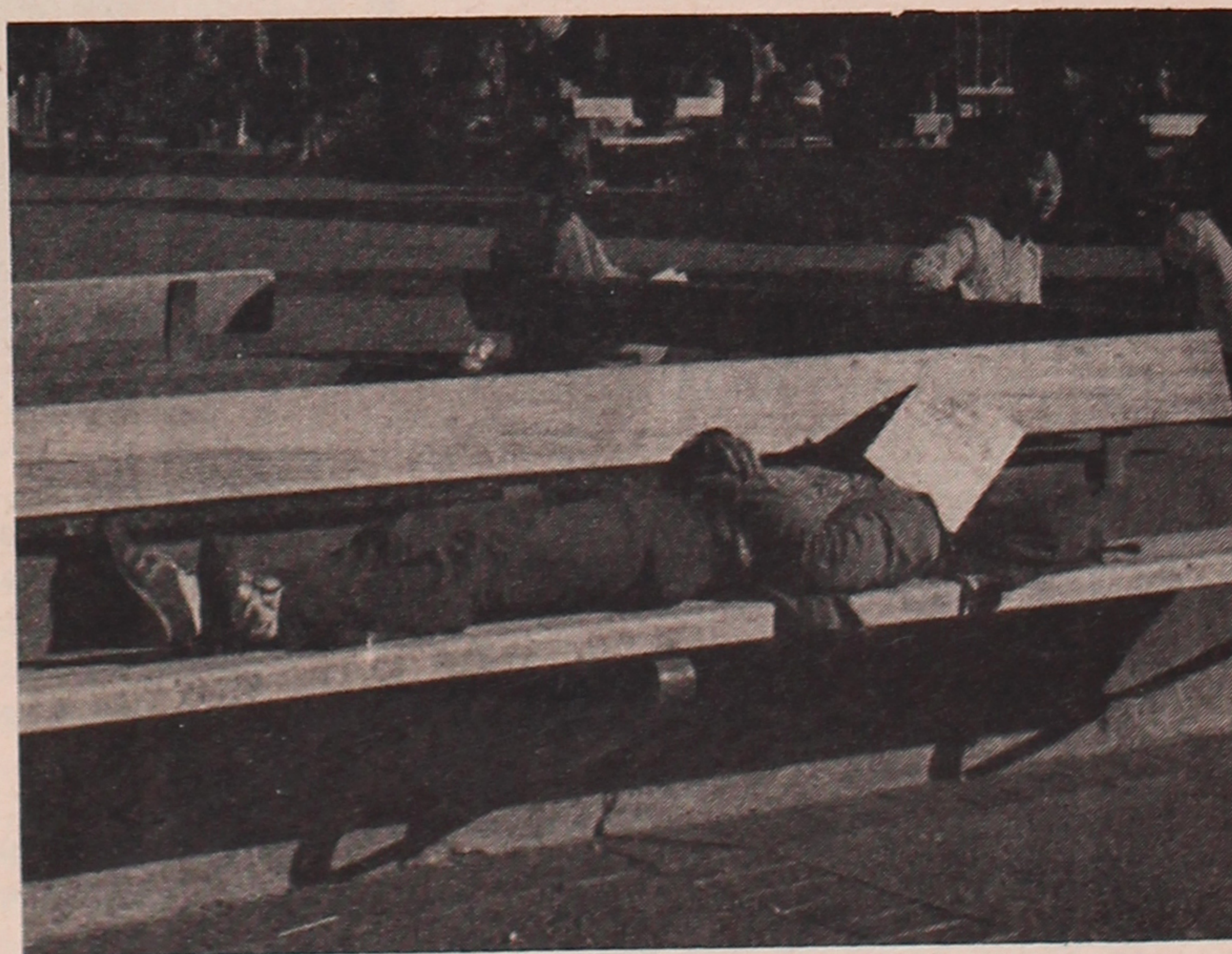
On October 25, about 400 Asian students participated in a conference, sponsored by the Asian Law Students Association, to raise the concerns toward the elimination of Asian special admissions. Speakers and workshops addressed themselves to the importance of the issue of special admissions, its implications to Third World people, and the specific problems Third World students face in special admissions and in law school. Primarily a show of support, the conference was the beginnings of the building of support around this issue.

Within ASU, we see this as an important struggle for Asian people. As a threat to the participation and needs of Asian students, the implications of special admissions affect the rights of all Asian students and all Third World and oppressed peoples. We are presently discussing ways in which we can organize and educate around special admissions at Boalt Hall as well as other attacks on students on campus. We need your ideas and participation.

Contact: Butch 653-6855, John 841-4322, Nobuo 642-6728 or drop by the office, 505 Eshleman, 642-6728

(cont. from pg. 3)

of programs. We are working with the A.S. major's caucus and the AS 20 course review, which will get together during the tenth week of class. ASU plans to give presentations to the AS workgroups and has applied for representation positions on the AS steering committee. Plans are forming for a joint presentation with AS on the role of AS. ASU hopes to work with other Third World organizations to bring together a forum for Winter quarter. If you would like further information or have different ideas or would like to work with the committee, contact Gary 845-3068, Joanne 658-7899, or Russell at 841-4322.



Why crash out alone in the cold? Come on up and check out the Asian student's lounge in 505 Eshleman. Come and meet other people, play ping-pong, study, eat lunch, (we'll be getting a refrigerator up here pretty soon), find out more about the ASU or just to rest up between classes.

ASIAN STUDENT UNITE

In the last issue of "Asian Students Unite", we laid out the general perspectives and direction of the ASU. This perspective, as reflected in the principles of unity: 1. Strive to meet the political social cultural needs of Asian students. 2. Expose and carry on work against racism and inequality. 3. Defend and build the educational rights of Asian students. 4. Establish communications and build relations between Asian people both on and off campus. 5. Work with and support progressive struggles, especially those of Third World people. 6. Strive to involve Asian students in the broad movement for social change.

was developed over three years of ongoing work (particularly in discussions held over this summer). In this issue, we will outline the concrete activities of the ASU. That is, what the ASU does on campus and how we see putting our principles of unity into action.

The ASU will be focusing its activities for the fall quarter in five work area committees: political action, newsletter, asian studies, the women's caucus, and publicity outreach. All of the committees have been meeting during the first part of the fall quarter, and each has established a direction and future plans. The political action committee will be talking with various community and campus organizations in order to clearly and concretely formulate cooperative work plans. The Asian studies committee plans to establish close relations with the student and faculty of Asian Studies and help build a broad base of support for Asian Studies both as ASU and as individual TA's and students. Newsletter will continue its outreach, informing students of developments concerning ASU. Publicity outreach will publicize future ASU activities and establish contact with interested students and groups. The Women's Caucus meets to discuss activities and issues concerning Asian women. Some of the specific plans for the future are covered under the following committee sections.

POLITICAL ACTION

The Political Action Committee sees the necessity of political involvement in the community and on campus in order to carry out the ASU principles of unity. In order to gain a firm grasp of the issues before undertaking such activities, we have directed our works towards investigation this quarter.

At present the committee is planning ongoing work in the Asian communities as we see the importance of linking up our struggles on campus with those in the community.

We have gone to S.F. Chinatown in order to learn from the experiences of the Chinese Progressive

Association (CPA) in their struggle for the rights of Chinese people, and are planning to visit S.F. Japantown in order to talk with people from the Committee Against Nihonmachi Eviction (CANE) in its struggle against the obstruction of Japantown.

The special admissions issue at Boalt Hall, U. C. Berkeley, is of deep concern to us and we will be involved in that struggle. At this time, we are in the process of developing a strategy to educate ourselves and the general campus on this crucial issue.

We are also developing a study group as an ongoing activity of this committee in analyzing and summing up our work, and helping to give a clear direction to our efforts.

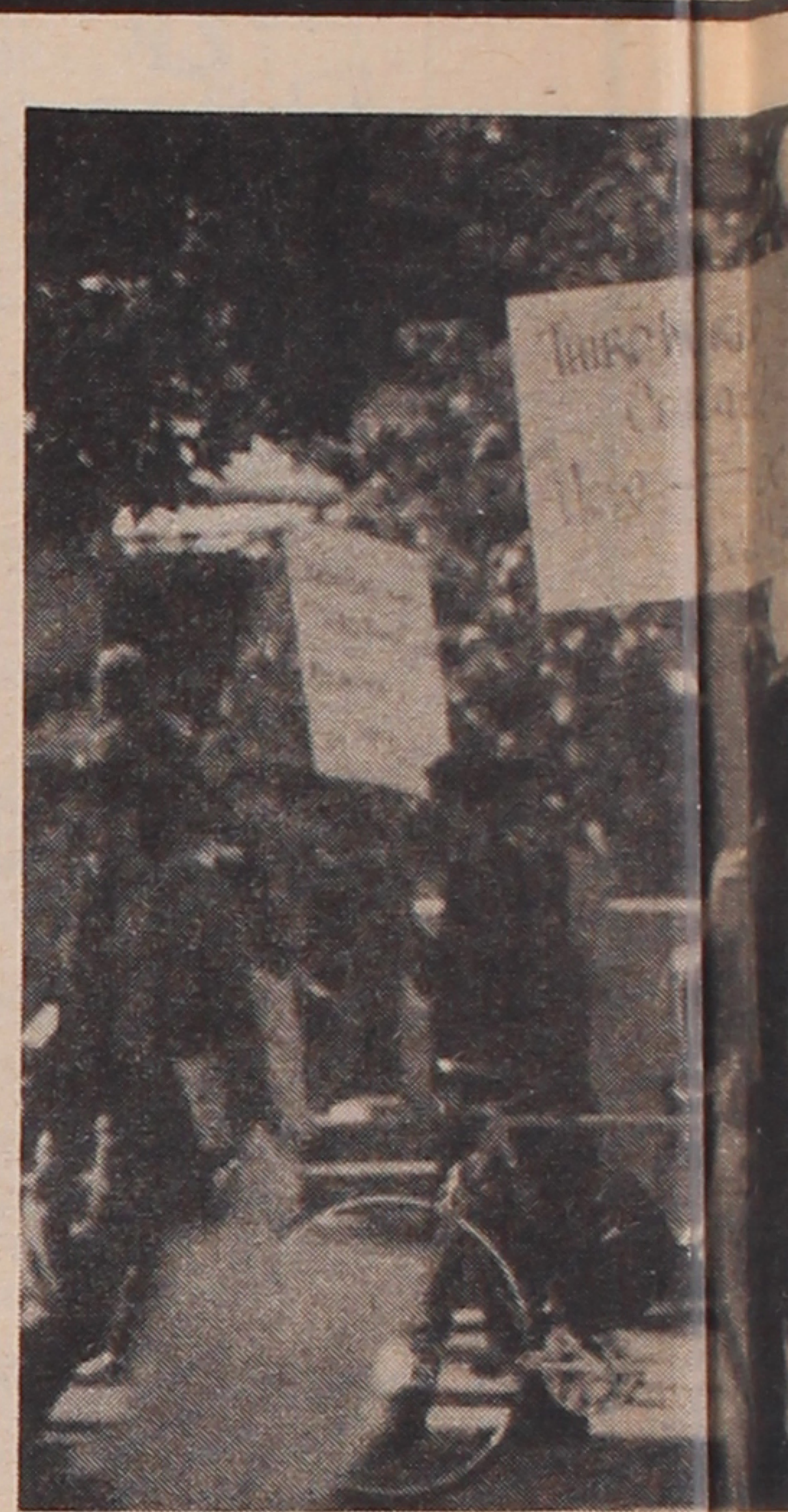
For more information, contact either Butch Wing or Nobuo Nishi at 642-6728.

NEWSLETTER

Right now, "Asian Students Unite" is trying to come out more often than we have in the past. We see this as one important step in



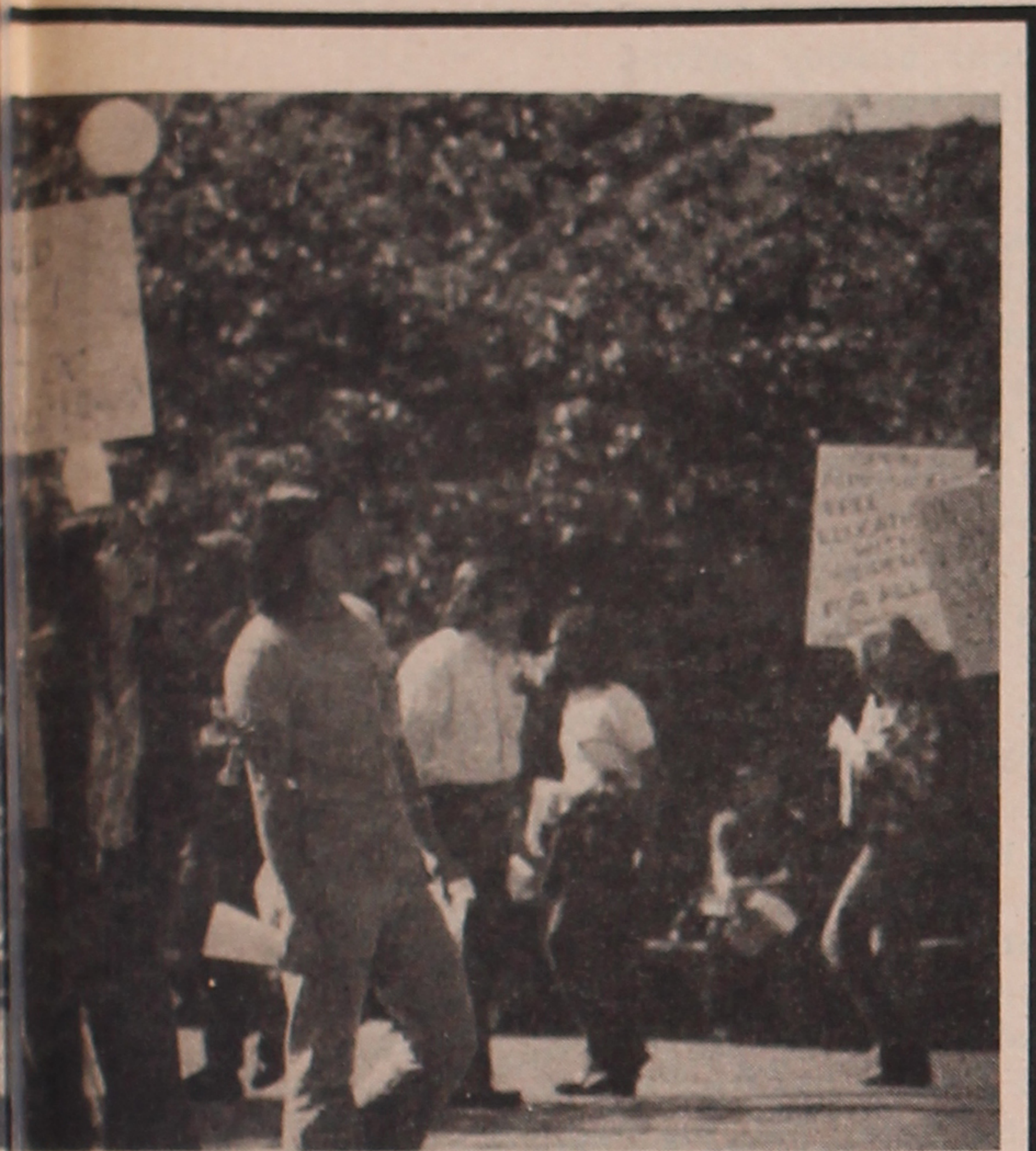
trying to more effectively publicize the events and activities of the ASU and to keep abreast of issues of particular importance to Asian students. In order to carry out this goal it is essential that "Asian Students Unite" stimulate discussion among Asian students at large and within the ASU around the oppression that we face as Asian peoples and the concrete things people can do to combat it. In order to encourage this discussion and participation, "Asian Students Unite" has developed a structure to allow people to participate as much or as little as their time allows. People can get involved by attending meetings to discuss and plan out the articles for each issue, writing articles, drawing graphics, taking pictures, helping with layout or helping to distribute newsletters on campus or in the dorms. In terms of people putting forward their ideas in "Asian Students Unite", we have developed our 'forum'. We hope that people will contribute their ideas on things like being an Asian in the dorms, moving from an area



- CLOCKWISE, FROM
- 1) ASIAN STUDIES COMMITTEE PARTICIPATED IN THE DEFEND AND BUILD STUDIES IN 1973.
 - 2) 1975 WOMEN'S CAUCUS CAUTION OF INTERNATIONAL DAY.
 - 3) A PICNIC SPONSORED BY PUBLICITY OUTREACH COMMITTEE.
 - 4) THE COMMITTEE AGAINST NICHONMACHI EVICTION WITHIN THE DESTROYING AN TOWN IS ONE OF THE IN WHICH THE ASU WILL BE PARTICIPATING.



WOMEN MOVES AHEAD



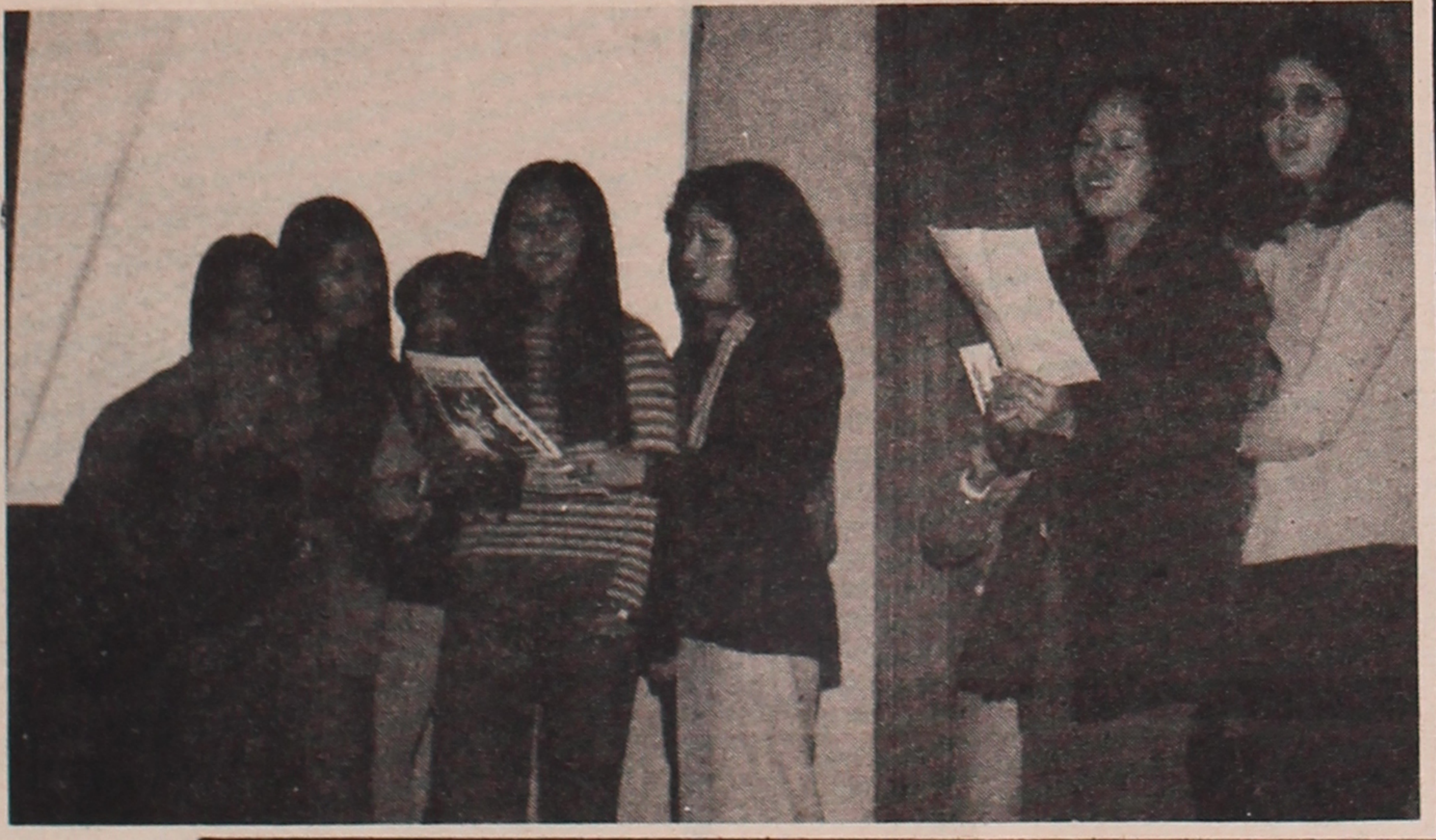
FROM TOP
 PUBLIC COMM. - ASU PAR-
 THE STRUGGLE TO
 WOULD THIRD WORLD
 1973.
 'S CAUCUS CELEBRA-
 TIONAL WOMEN'S
 SUPPORTED BY THE PUB-
 LISH COMM.
 AGAINST NIHON-
 WHICH IS FIGHT-
 STION OF S.F. JAP-
 OF SEVERAL AREAS
 THE SU HAS AND WILL
 PANG.

with almost no Asians to the Bay Area, your views on the ASU, what we could do to become a better organization, or your views on the issue around which the ASU is working. Basically, just about anything that would be of relevance to Asian students. We encourage people to become involved in "Asian Students Unite" and to help build it into a publication that can really reflect the needs and interests of Asian students.

PUBLICITY/ OUTREACH

The publicity outreach committee concerns itself with the outreach activities of ASU. We coordinate publicity and information regarding all ASU events, which includes the concrete tasks of leafletting, making posters, and staying on top of class presentations and meetings to help people learn more about the history of Asian student activity on campus and ASU.

We also see as significant the lack of social activity on campus for Asian students. ASU strives to meet this need. The publicity outreach committee coordinates functions and activities that provide Asian students opportunities to get together. In the past month we sponsored a par-



ty at Rochedale Lounge which drew a lot of new and transfer students from the dorms, informal dorm meetings, and also opened up an informal study lounge in 505 Eshelman (where everyone is welcome all through the day and even at night).

Currently, we are working on ideas of Asian students on campus and base our work on everyone's ideas. If you have any suggestions or ideas for the publicity outreach committee or ASU, please feel free to express them. You can contact the ASU office at 642-6728 for info re: our meetings and activities. We want to encourage participation from everyone.

WOMEN'S CAUCUS

"Women Hold Up Half The Sky"--
 We've frequently heard the above

statement but few organizations on campus give attention to what goes behind it. Very rarely do activities deal with the situations facing women students. In ASU, we see such an area as a necessary part of our organization and also a very important influence on our own growth and outlook and the experiences of Asian students. Formally the work area was designated the "Women's Caucus", however, its structure is very informal and personal.

Right now there are a lot of new and creative ideas being discussed within the caucus. Most recently the group planned a potluck dinner for their first informal meeting together. Other events that are tentatively coming up within the next few weeks include self defense lessons (a practicality for a lot of women who have activities or the library to attend to late at night), a speaker from BAWAR (Bay Area Women Against Rape), and maybe some educational sessions to learn more about the history of Asian women in America, which has been generally ignored by the educational system.

Within ASU the caucus provides an opportunity to discuss and evaluate our participation, as women, in the organization. However, the overall focus of the Women's Caucus is geared to meet all the needs of women whether that be socially getting together or politically discussing problems affecting individual women such as job discrimination. It's a very informal and informative work area and a refreshing experience for a lot of women students who do not have the opportunity to just meet with other women and talk about things specifically affecting us today. If any women are interested in the caucus, information about meetings and such can be obtained by calling either Toni Morizumi at 845-1605, Joanne Fujiwara at 658-7899, or the ASU office at 642-6728.

ASIAN STUDIES

Asian American Studies formed through the struggles of Asian students on the Berkeley campus. Students have been an integral part of the program from its beginning. The ASU has always considered student input into Asian Studies as being vital. This input has taken three forms: 1. As students in Asian Studies classes, 2. As Asian Studies staff members, and 3. As members of Asian Studies work committees and decision making bodies. In order to help coordinate and develop activities around Asian Studies, the Asian Studies committee was formed within the ASU. For example, within the 145 course, (Social Institutions and the Asian-American Community), a student caucus was originated to evaluate and plan the class. The Asian Studies committee will assist in the development of the caucus and participate in the coordination of more of this type



INSCRIBED TO ALL MY YELLOW BROTHERS

i am the daughter of Hiroshima
 a child snatched from the claws of a monster
 not in time for Death
 the creature which grips many beheaded children
 as dripping bloody Gorgons
 i am the yellow pearl, mangled in an oyster shell
 tossed aside by her brothers
 i echo the shrieks and haunting groans
 of suffering, death, despair
 i am the people enslaved, shedding blood upon the
 ground of America
 i am the innumerable who were interned in prisons
 upon the very soil which they tilled and
 cultivated
 to spring forth beautiful tiny blossoms
 of pain
 i am the daughter of Hiroshima
 i have been slashed by the burning seas of napalm
 i have been forced to kill my flesh and blood brother
 to give my body to men in uniform
 to commit sins unimaginable, by a country
 not welcomed in my home land
 i have been stripped of my identity
 pressured to assimilate
 oppressed by the gigantic hulking machine
 called America
 to conform to the stereotype of servility
 Idiot quiet pleading sheep-brothers
 no more ah so for me
 give me the right to be free

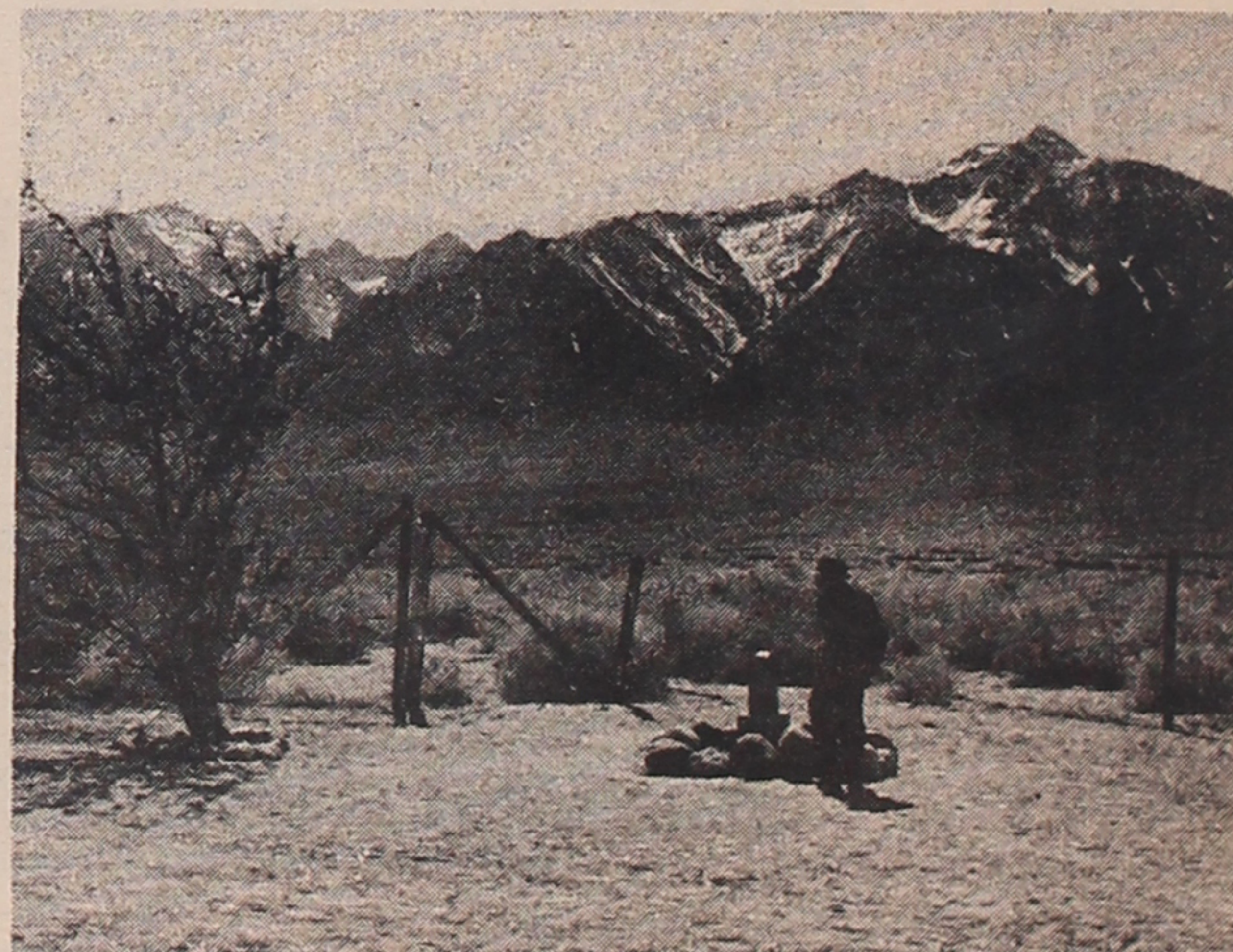
i am the daughter of Hiroshima
 tears flowing from wet brown eyes
 crying, crying, crying,
 all they've known is sadness
 and fear
 mercy for them oh Lord please

but no more America
 the dead ghosts arise
 the nagasaki souls utter a funeral elegy in sighing
 motion
 ephemeral remembrances cling weblike to your breasts
 recall, America...
 i am your brother.

Lori R. Higa

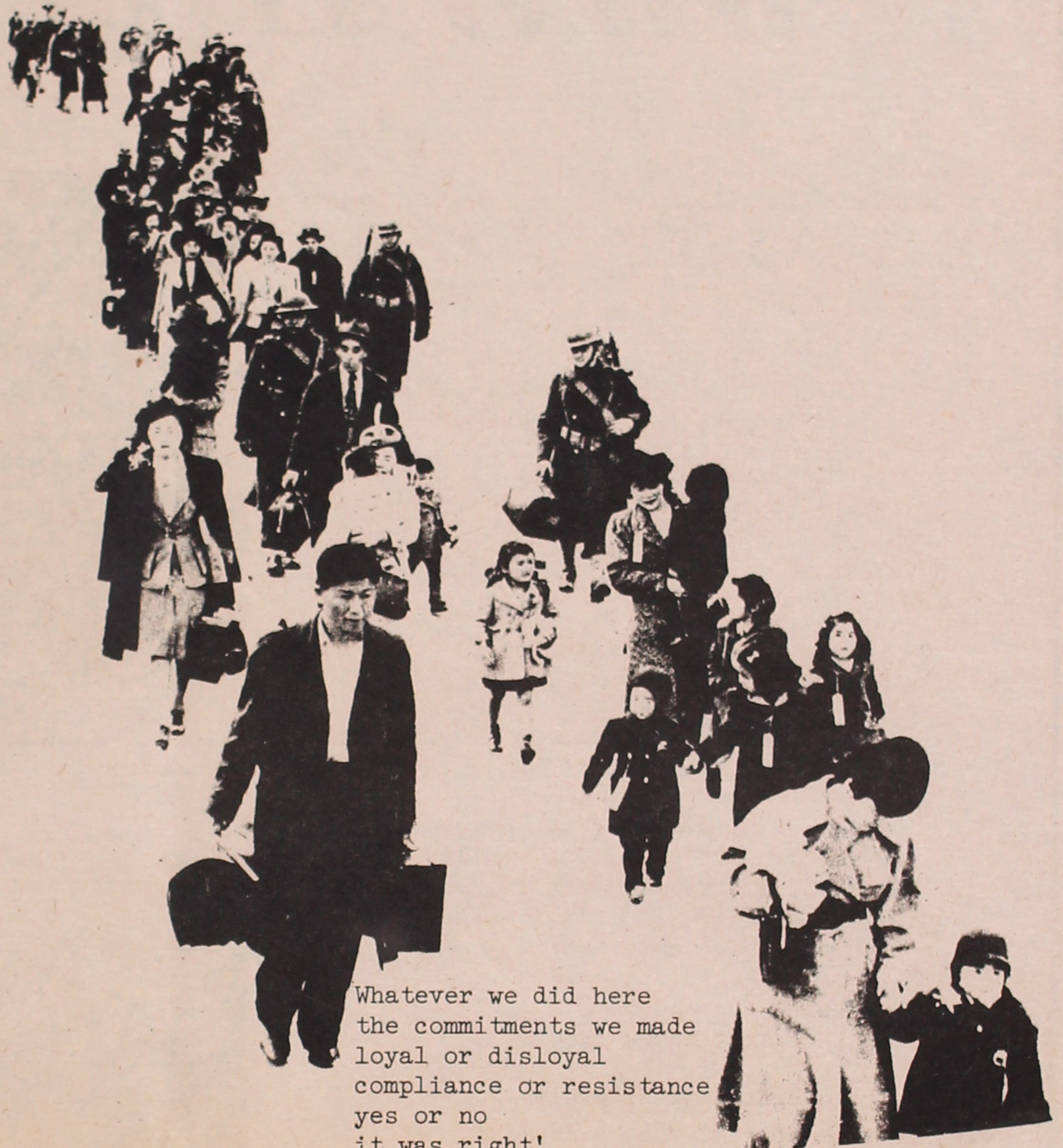


The busride to Tulelake
 in the night over dark highways
 rain through the flatlands
 and snow beyond Weed
 up, up to the roof of California
 was a movement back in time
 back to the years 1943, 44, & 45
 when I was 19, 20, & 21.
 Being among you
 sensing your youthfulness
 hearing your strong voices
 I search for reasons why
 I came after some 30 years.
 Tulelake, Tulelake--that
 was a name I dared not mention
 spoken warily, always with
 hesitation, never voluntarily.
 But you have made it
 a common name again
 of a small sleepy town
 that it was
 before we came here
 before we were confined here
 before it became Tulelake relocation Center
 before it became Tulelake segregation Center
 for disloyal Japanese Americans.
 Yes, it's right that we're here
 to see first hand where
 18,000 of us lived
 for 3 years or more
 to see again
 the barbed wire fence
 the guard towers, the MP's
 the machine guns, the bayonets
 the tanks, the barracks
 the messhalls, the shower rooms
 the latrines
 Yes, it's right to feel
 the bitter cold
 of the severe winters
 the warmth of the pot-bellied stoves
 and the dust storms
 how can we forget
 the sand biting into your skin
 filling your nose and mouth
 and ears, graying your hair
 in an instant



THE FOLLOWING IS A POEM COMPOSED BY HIROSHI KASHIWAGI, A FORMER INTERNEE AT TULELAKE CONCENTRATION CAMP. HE PRESENTED THIS POEM AT A PILGRIMAGE TO TULELAKE CONCENTRATION CAMP, A PROGRAM SPONSORED BY ABOUT 10 DIFFERENT ASU'S THROUGHOUT NORTHERN CALIFORNIA.

Yes, it's right to recall
the directives
of the War Relocation Authority
their threats and lies
the meetings, the strikes
the resistance, arrests
stockades, violence, attacks
murder, derangement
pain, grief, separation
departure, informers
recriminations, disagreements
loyalty, disloyalty
yes yes, no no, yes yes
Issei, Nisei, Kibei.
These are words now
but they were lived here.
There were deaths and births
and lovemaking in the firebreak
with the warden's flashlight
shining on you.
Yes, and movies, socials, dances
sports, card games
and religion.
Sewing classes, flower
arrangement, doll making, wood carving
beauty behind barbed wires.
REcreation was big
it was encouraged.
"Keep 'em busy
keep 'em occupied
keep 'em sane,
for heaven's sake!"
But a Chronicle reporter
observed: "There are
18,000 mental patients living
in confinement at Tulelake."
So it is right that we are here
it is right that I remember
and tell it.
I wish I could share
the feeling I have now
with the Issei and Nisei
they who lived here
they who do not speak of it
who pass it off
as a good time experience.



Whatever we did here
the commitments we made
loyal or disloyal
compliance or resistance
yes or no
it was right!
Because the young people
make it so
because they seek the history
from those of us who lived it.
So we must remember
and tell it
we must acknowledge it
and tell it.
So we are here
the Abalone Mountain
the Castle Rock
the dry lake bed
where tules still grow.
But the barracks
where are the barracks?
And where Apt. 40 05 D
home once long ago
sold? demolished? gone.
Little remains
excepts what's trapped
in our heads
far back somewhere.
I'm glad I made this trip.
Somehow I feel
a meeting of youths
your youth, your energy
your enthusiam, your
sense of justice
with the youth that I was
idealistic, intense, angry.
It's a happy meeting
it is even better
that I can stand aside
after 30 odd years
and see it, this meeting
to meet, to share, to learn
to struggle, to continue.
I sense an immense feeling
of continuity
with
you--all of you.
Yes. It's right, it's right
and I'm glad I came back to Tulelake
with you.

asu calendar of events:

WHAT IT IS!

NOVEMBER 25, TUESDAY

+ ASU General Meeting at 4:00 in 505 Eshleman Hall.

+ Radical Student Union presents the last of "The People in Struggle" film series. "La Luta Continua," is a film about the national liberation movement in Mozambique. 7:30 pm at 2503 Life Sciences Bldg. on the Berkeley campus.

NOVEMBER 26 - DECEMBER 2, WEDNESDAY THRU TUESDAY

+ "Ambush" and "Zatoichi at Large" at the Koksai Theatre in S.F. Japantown.

NOVEMBER 19-25, WEDNESDAY THRU TUESDAY

+ "Under the Banner of the Samurai" and "Trail of Blood #2." Will run at the Kokusai Theatre, 1700 Post St., S.F. Japantown. Phone 563-1400.

NOVEMBER 28, FRIDAY

+ Open Studio on TV channel 9, will feature "Japanese Cooking with Kimiko - San." Tempura with Heavenly Dew Sauce.

DECEMBER 1, MONDAY

+ "Asian American Women & Poetry" lecture by writer Emily Cachapero. Sponsored by Asian American Studies Dept. at San Jose State University, 9:30-10:30 am, Dudley Moorehead.

DECEMBER 3, WEDNESDAY

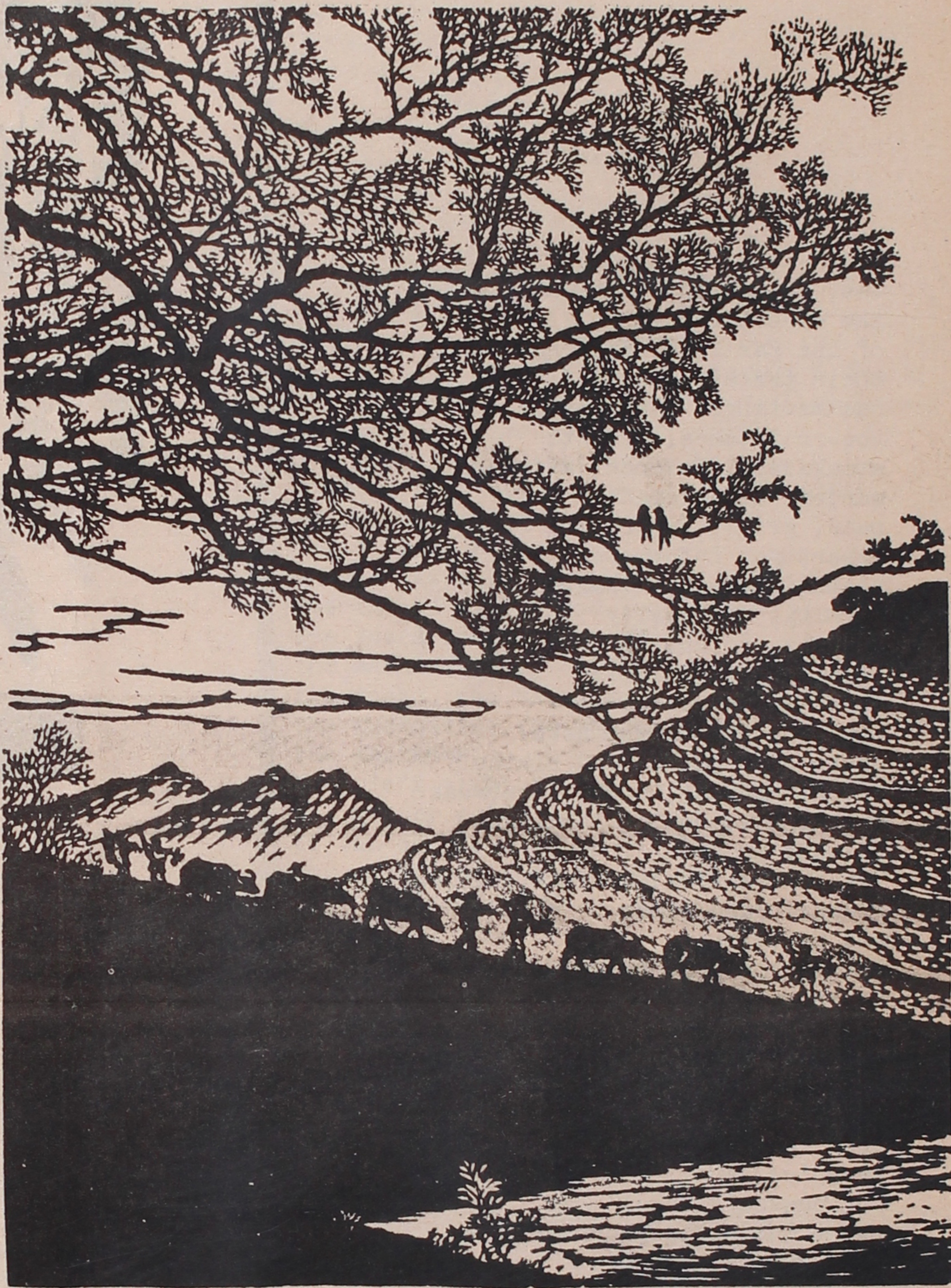
+ "Asian American Women in Media" lecture by Jan Yanehiro, KFRC public relations director. Sponsored by the Asian American Studies Dept. Will take place at San Jose State University, Guadalupe Room, Student Union, 9:30-11:00 am.

CONTINUING THRU DECEMBER 13, SATURDAY

+ "Friends." Modern Asian-American photography exhibit at the Jackson St. Gallery, between Columbus and Kearny Sts. Walk in anytime during the day or call 982-7924.

DECEMBER 20, SATURDAY

+ A dance sponsored by the Berkeley High ASU, "For the Love of You" featuring "East Wind" and "Grand Theft." Berkeley High, Allston and Milvia Streets, 8:30 - 1 AM. \$3.00 before 9:30 PM or with bid, \$3.50 general.



ASUC SENATE ELECTIONS

Bowman Ching

Mark Fong

Cecelia Lee

VOTE FOR
ASIAN BOARD
CANDIDATES

