

Nu Alpha Chi

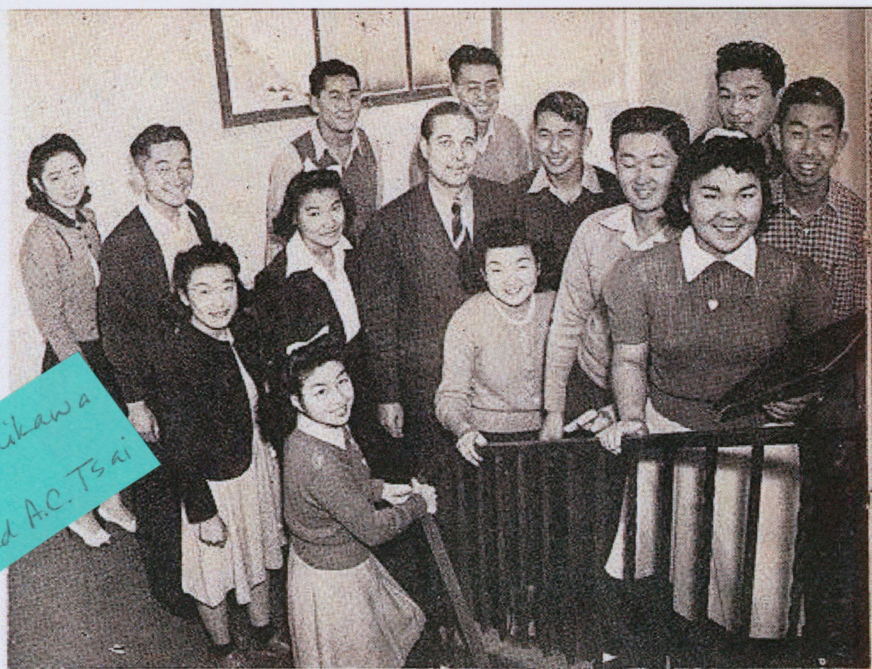
To formulate a working policy for aiding in the current situation and to promote good will among Japanese Staters and between other students and Japanese students, Nu Alpha Chi members meet with Dr. Dotson, org sponsor, monthly at members' homes.

Best meetings of the year were the receptions for Frosh Japanese, the Frosh banquet and initiation and the post-final flings to rejoice at the completion of finals. The initiation banquet had best food of the year - chow mein.

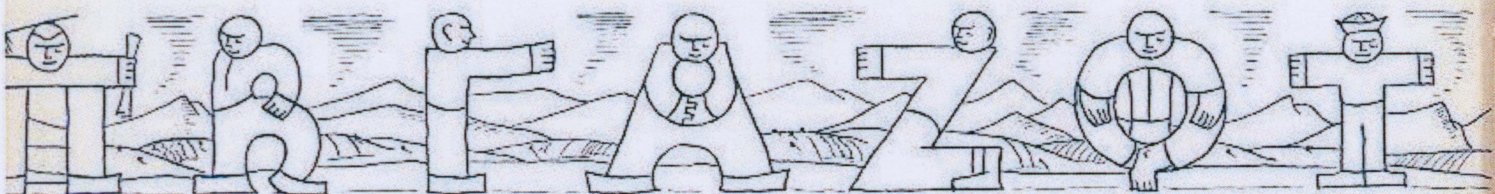
Officers:

| | |
|---------------------|-----------------|
| President..... | Ryo Morikawa |
| Vice President..... | Mariko Iwashita |
| Secretary..... | Kiroko Kushino |
| Treasurer..... | Juichi Satow |

Members: Henry Koide, Iwao Ishino, Azusa Tsunoyoshi, Lillian Sogo, Mariko Nakaji, Ellen Kuyama, Midori Takeda, Carl Yoshimine, George Ono, Minoru Kojima, Takeo Asakawa, Grace Umezawa, George Kita, Misao Furuta, Arnold Watanabe, Chiyoko Fujiura, Tsuneko Hironaka, Aiji Esaki, June Kushino, Shoji Nakadate, Nobora Takeshima, Kiyoko Matsumoto.



Back: Tsuneko Hironaka, Kakuya Nakadate, Shoji Nakadate, Henry Koide. Center: June Kushino, Mariko Iwashita, Dr. George E. Dotson, Carl Yoshimine, Nobora Takashina, Arnold Watanabe. Front: Viola Takeda, Grace Umezawa, Aiji Esaki, Chiyoko Fujiura.



Mary Baldwin, Thelma Phillips, John Roberts, Ruby Reid, Beatrice Meyer. Seated: Helen Virgil, Harry Painter.



Inter-Religious Council

As a coordinating body for all of the religious clubs on campus, the Inter-Religious Council invites as members all presidents of the various religious groups.

In spite of the fact that the council has no special sponsor, meeting place or date, it has evolved several promising plans for the future. Paramount among these was the Inter-Religious Banquet planned for the spring semester to which everyone was invited. Another was the shelf of religious books to be kept up and managed by the group in the college library.

Officers:

| | |
|---------------------|---|
| President..... | John Roberts, Roger Williams Club |
| Vice President..... | Helen Virgil, Westminster Club |
| Secretary..... | Thelma Phillips, Christian Science Club |
| Treasurer..... | Harry Painter, Episcopal Club |

Other Members: Mary Baldwin, Aztec Bible Club; Beatrice Meyer, Newman Club; Ruby Reid, Wesley Foundation.

Nu Alpha Chi

To formulate a working policy for aiding in the current situation and to promote good will among Japanese Staters and between other students and Japanese students, Nu Alpha Chi members meet with Dr. Dotson, org sponsor, monthly at members' homes.

Best meetings of the year were the receptions for Frosh Japanese, the Frosh banquet and initiation and the post-final flings to rejoice at the completion of finals. The initiation banquet had best food of the year, chow mein.

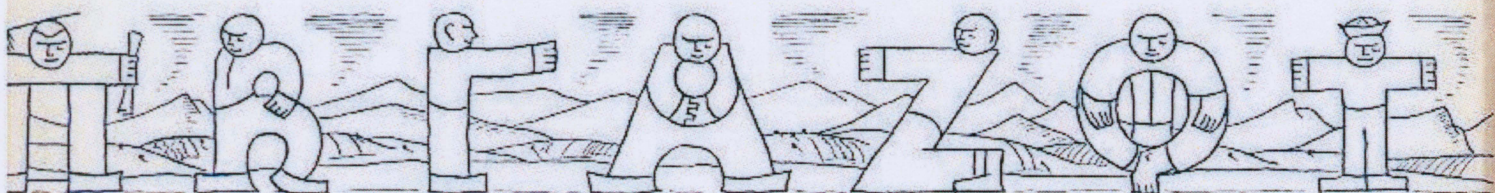
Officers:

| | |
|---------------------|-----------------|
| President..... | Ryo Morikawa |
| Vice President..... | Mariko Iwashita |
| Secretary..... | Kiroko Kushino |
| Treasurer..... | Jruichi Satow |

Members: Henry Koide, Iwao Ishino, Azusa Tsuneyoshi, Lillian Sogo, Mariko Nakaji, Ellen Kuyama, Midori Takeda, Carl Yoshimine, George Ono, Minoru Kojima, Takeo Asakawa, Grace Umezawa, George Kita, Misao Furuta, Arnold Watanabe, Chiyoko Fujiura, Tsuneko Hironaka, Aiji Esaki, June Kushino, Shoji Nakadate, Nobora Takeshima, Kiyoko Matsumoto.



Back: Tsuneko Hironaka, Kakuya Nakadate, Shoji Nakadate, Henry Koide. Center: June Kushino, Mariko Iwashita, Dr. George E. Dotson, Carl Yoshimine, Nobora Takashina, Arnold Watanabe. Front: Viola Takeda, Grace Umezawa, Aiji Etaki, Chiyoko Fujiura.



ry Baldwin, Thelma Phillips, John Roberts, Ruby Reid, Beatrice
ver. Seated: Helen Virgil, Harry Painter.



Inter-Religious Council

As a coordinating body for all of the religious clubs on campus, the Inter-Religious Council invites as members all presidents of the various religious groups.

In spite of the fact that the council has no special sponsor, meeting place or date, it has evolved several promising plans for the future. Paramount among these was the Inter-Religious Banquet planned for the spring semester to which everyone was invited. Another was the shelf of religious books to be kept up and managed by the group in the college library.

Officers:

| | |
|---------------------|---|
| President..... | John Roberts, Roger Williams Club |
| Vice President..... | Helen Virgil, Westminster Club |
| Secretary..... | Thelma Phillips, Christian Science Club |
| Treasurer..... | Harry Painter, Episcopal Club |

Other Members: Mary Baldwin, Aztec Bible Club; Beatrice Meyer, Newman Club; Ruby Reid, Wesley Foundation.