

JAPANESE FAMILY PICTORIAL HISTORY PROJECT

Megan M. Sunahara

Ethnic Studies 101

MWF 9:30-10:20

Gregory Yee Mark

T.A. Heather / Scott

Dec. 1950 (Oahu)

On the right top, Sanséi generation:
Carol, Gerry, Sonny, and Annette Yoshida
Taken December, 1950 Oahu.



Carol
Gerry
Sonny
Annette
Yoshida

Sansei generation

1976 5yrs old (Oahu)

On the bottom right, Megan Miyo Sunahara. She represents the yonsei generation. Celebrating Girls's Day in Hawaii. Wearing a Japanese kimono and holding her favorite Japanese doll.



Yonsei generation
(Megan Sunahara)
Celebrating Girl's Day

Haruko Nagai as a grown woman/ picture taken in the mainland



Haruko, Dorothy Nagai
Nisei Generation

My grandmother, Teruko, Nancy Nagai / Feb 7, 1931



Teruko Nancy Nagai
"Sweet Eighteenth birthday"

My beautiful great aunt, Haruko Nagai/ her American name: Dorothy

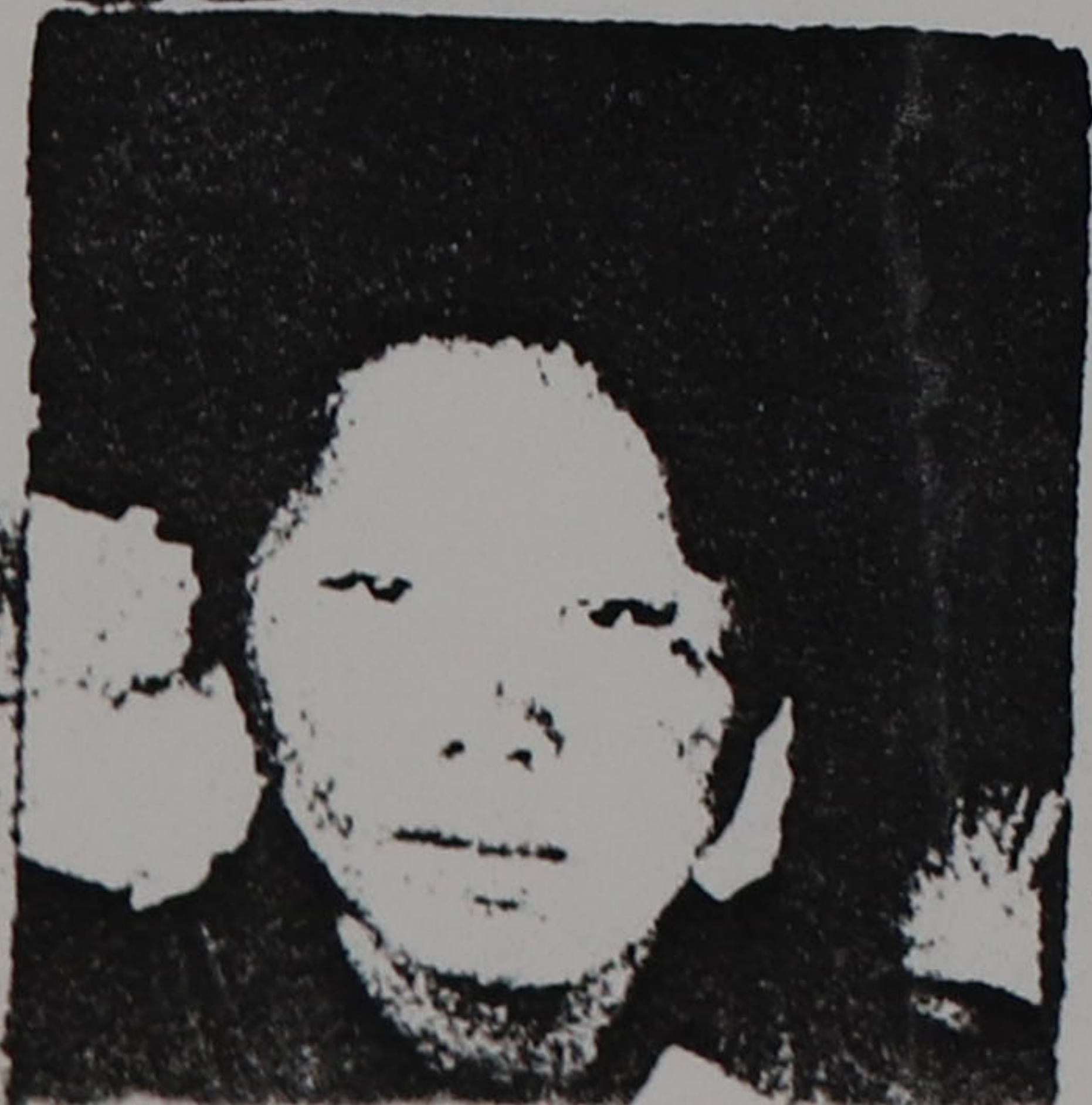
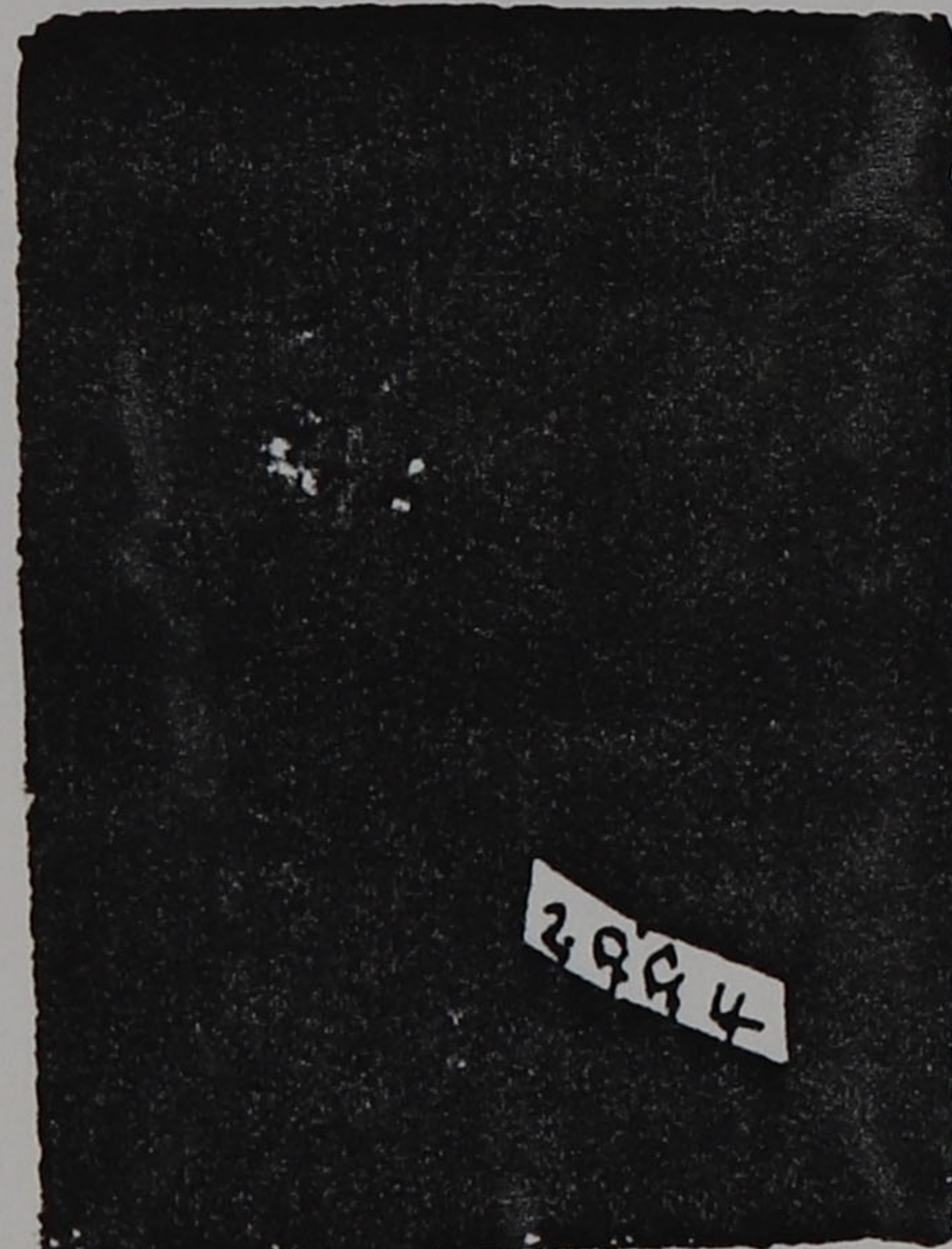
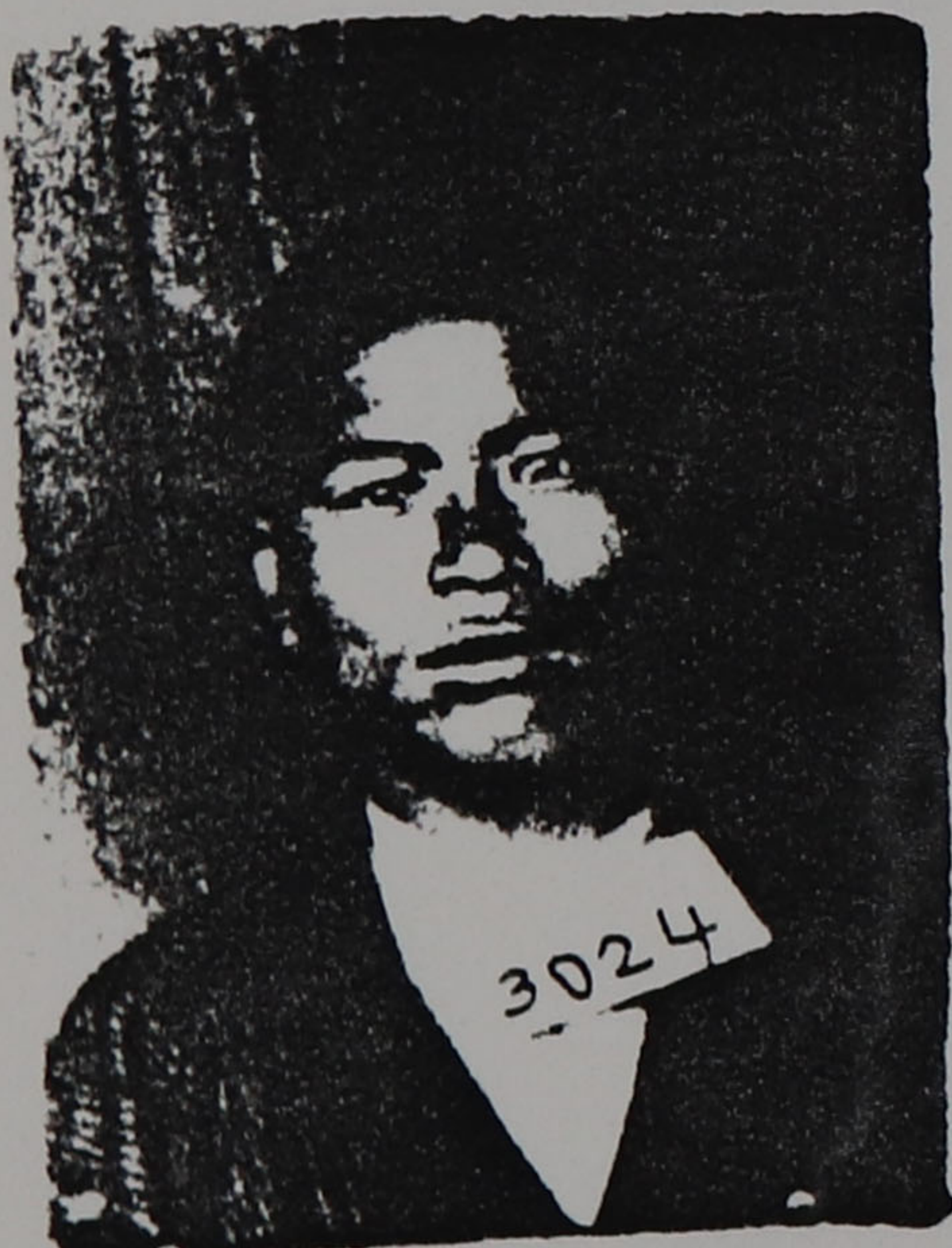
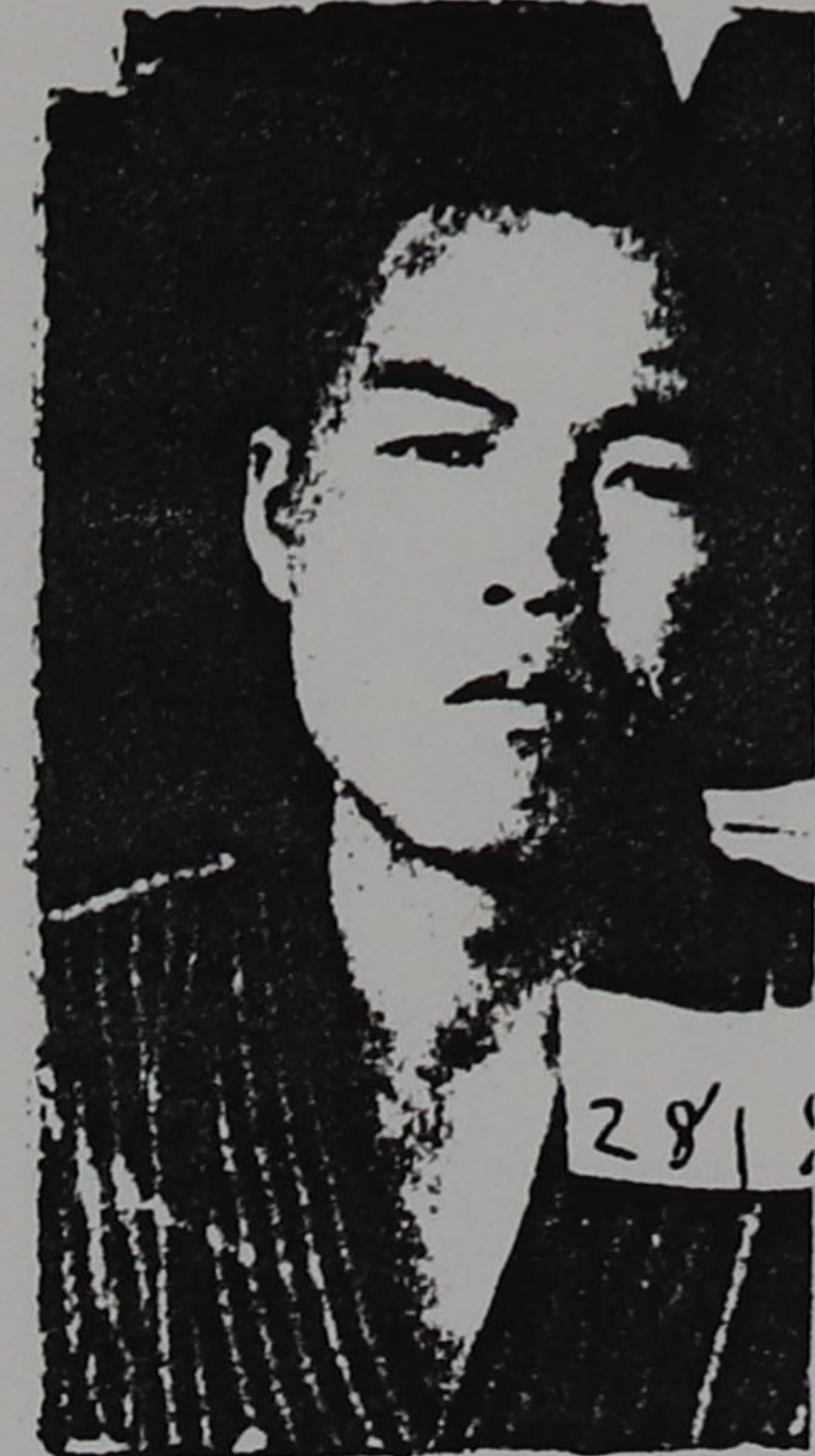
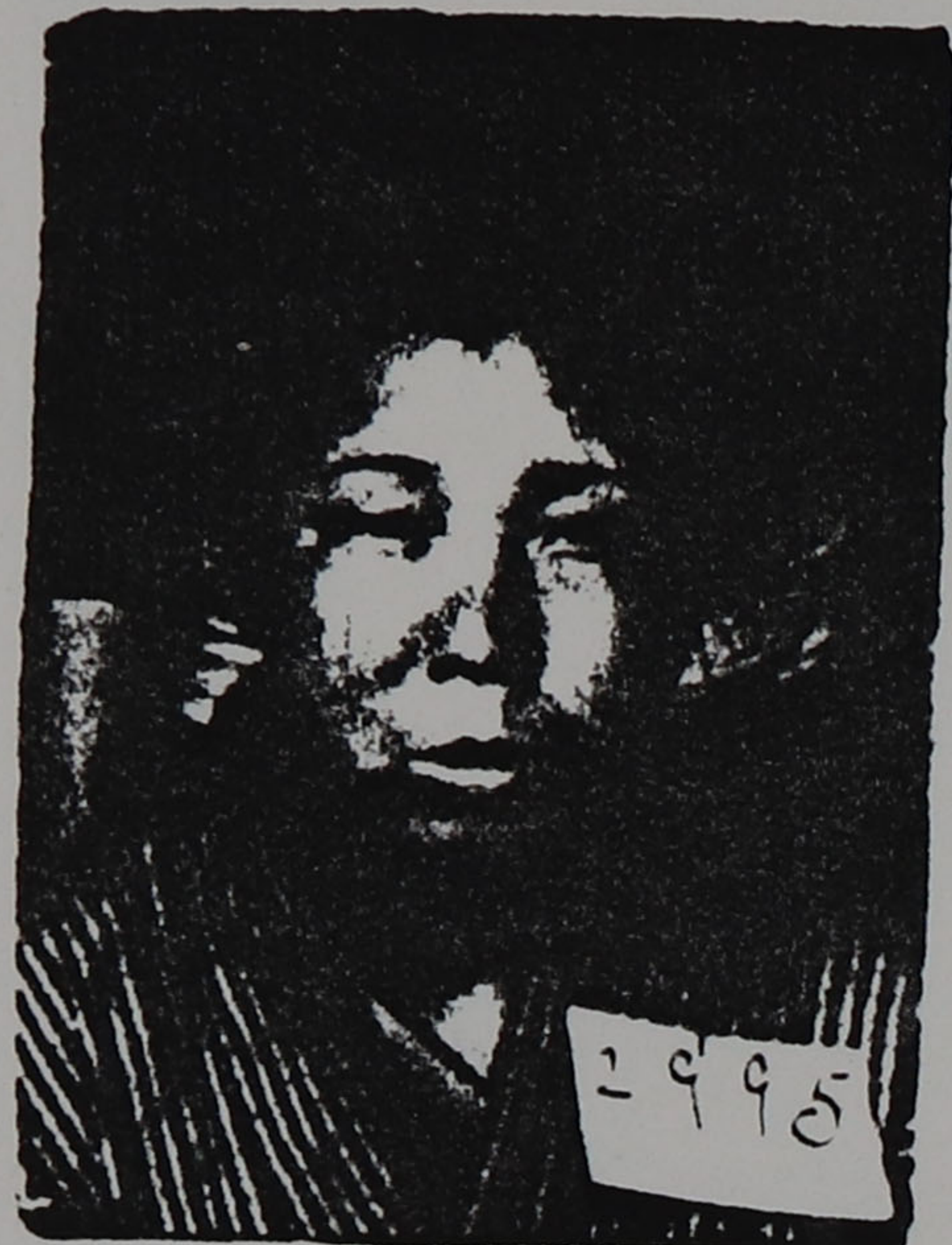
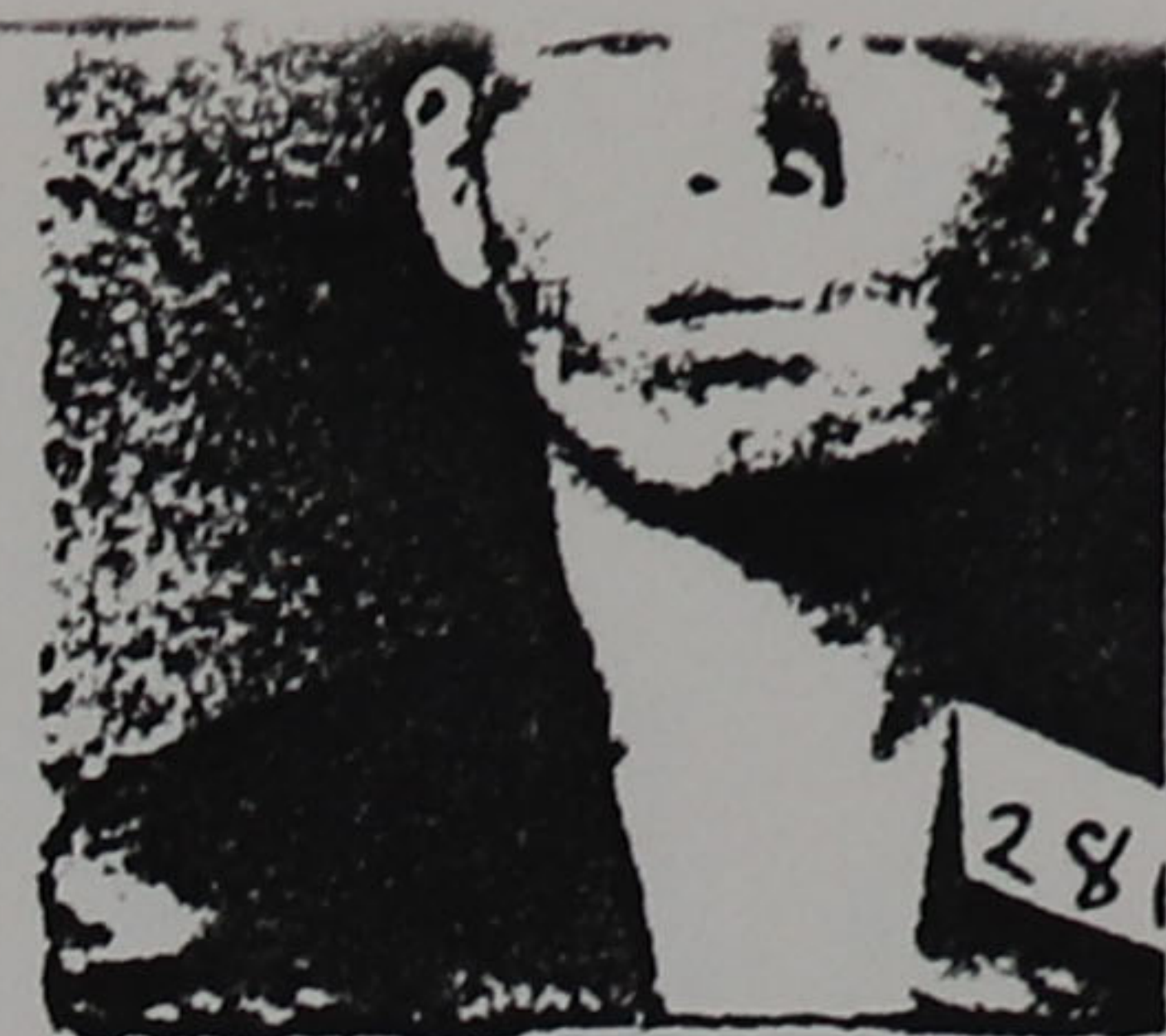
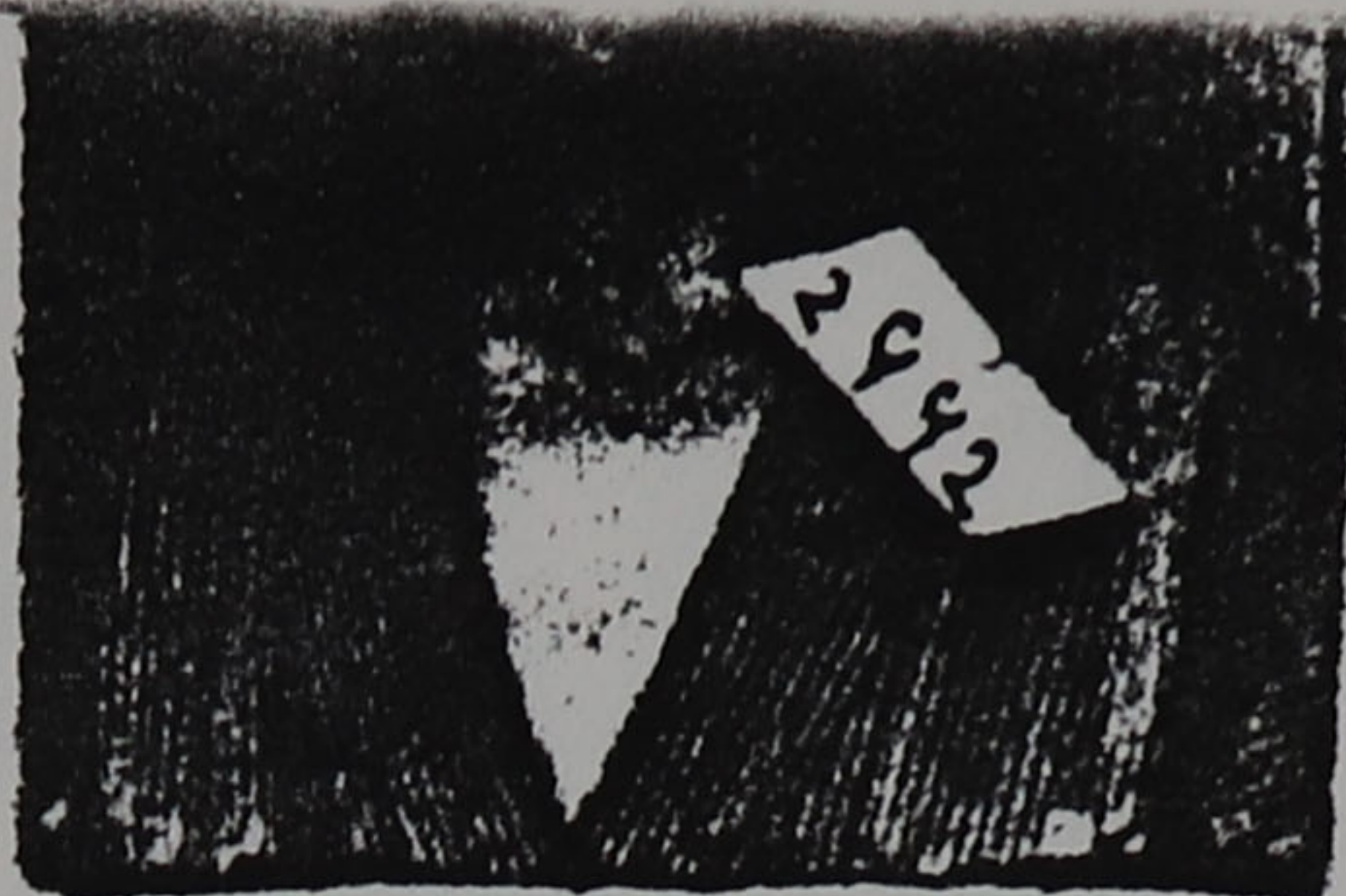
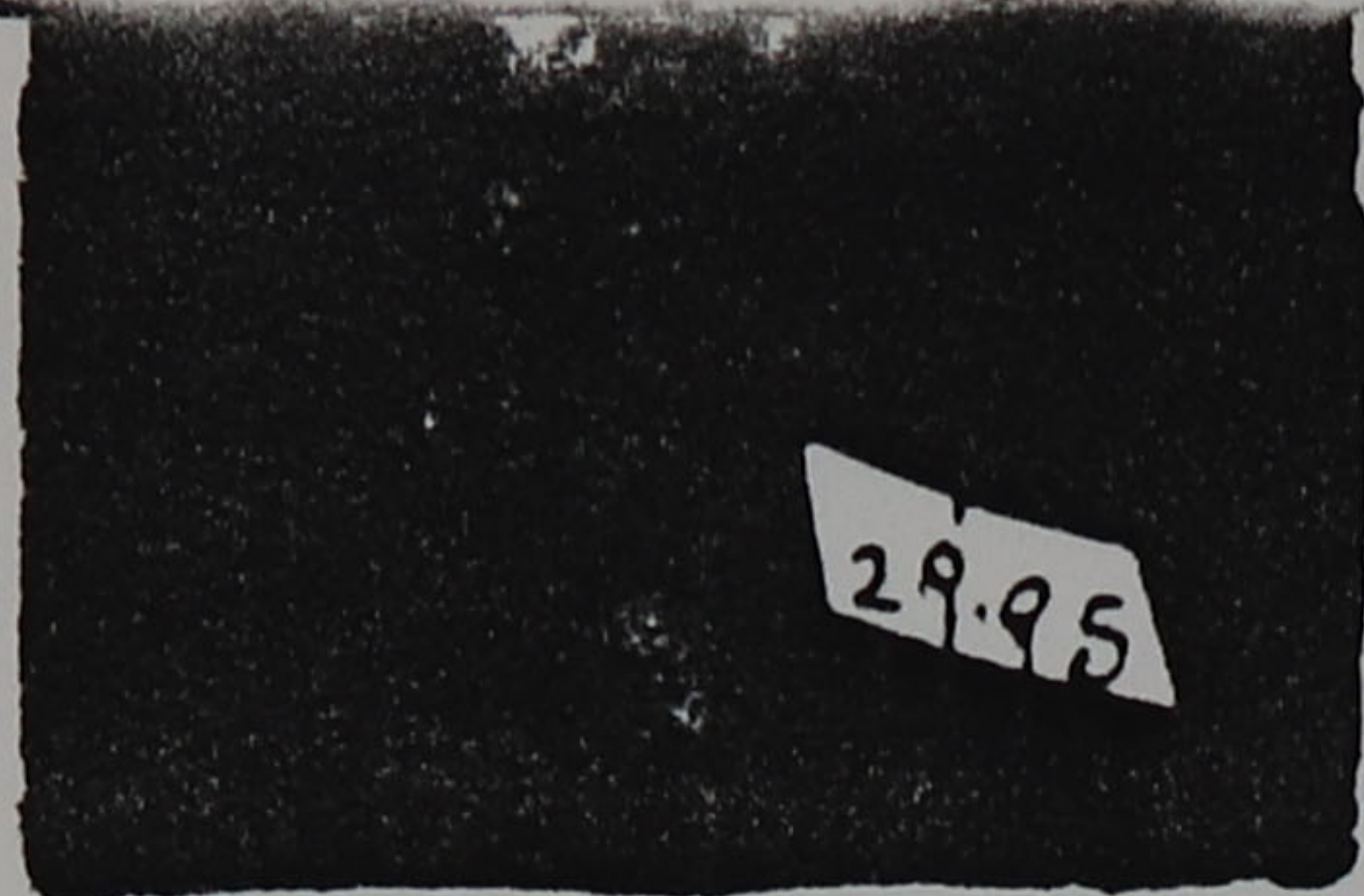
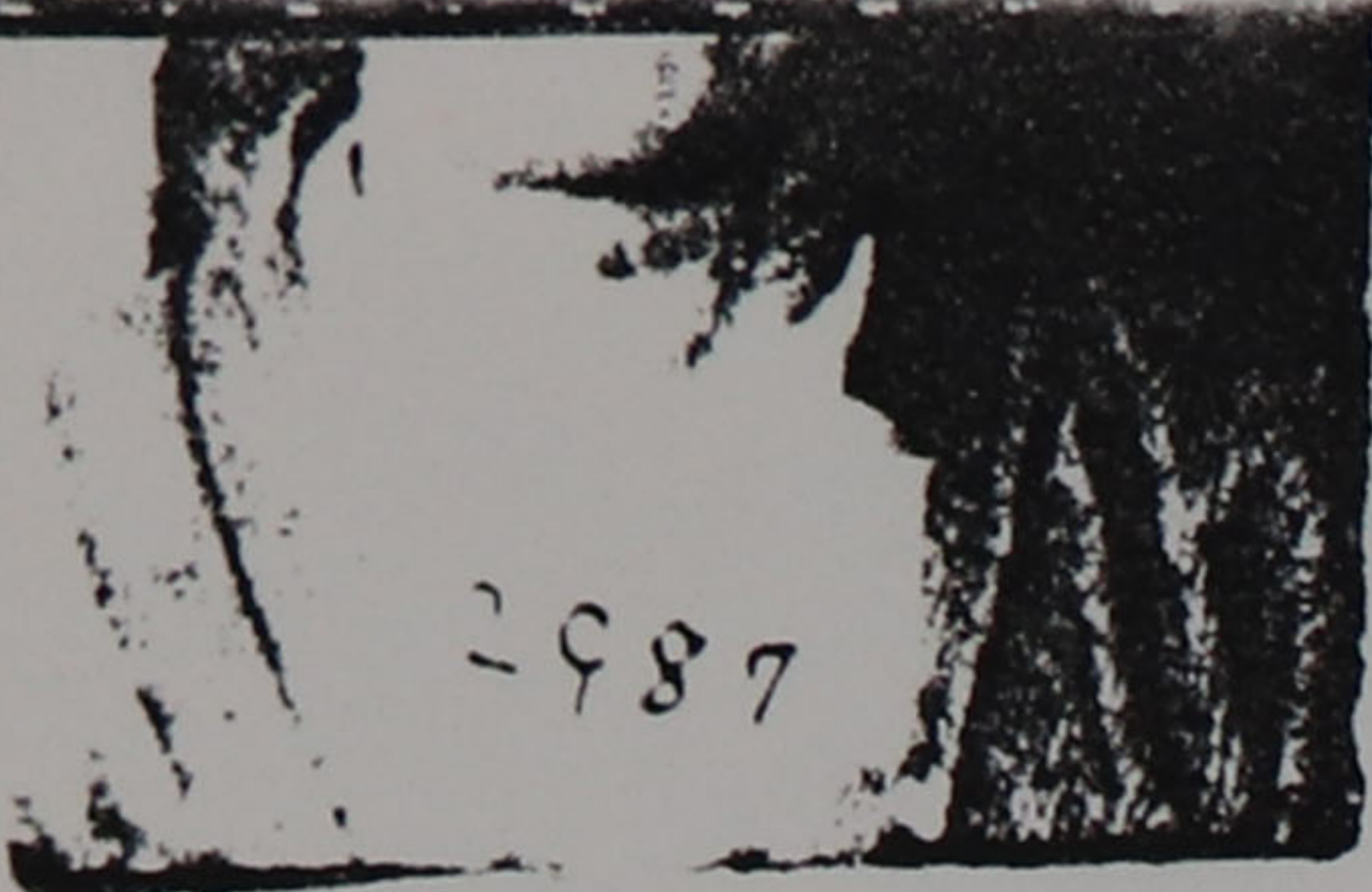


Haruko Nagai
Nisei generation

My mother, Carol Yoshida Sunahara/ She represents the sansei generation

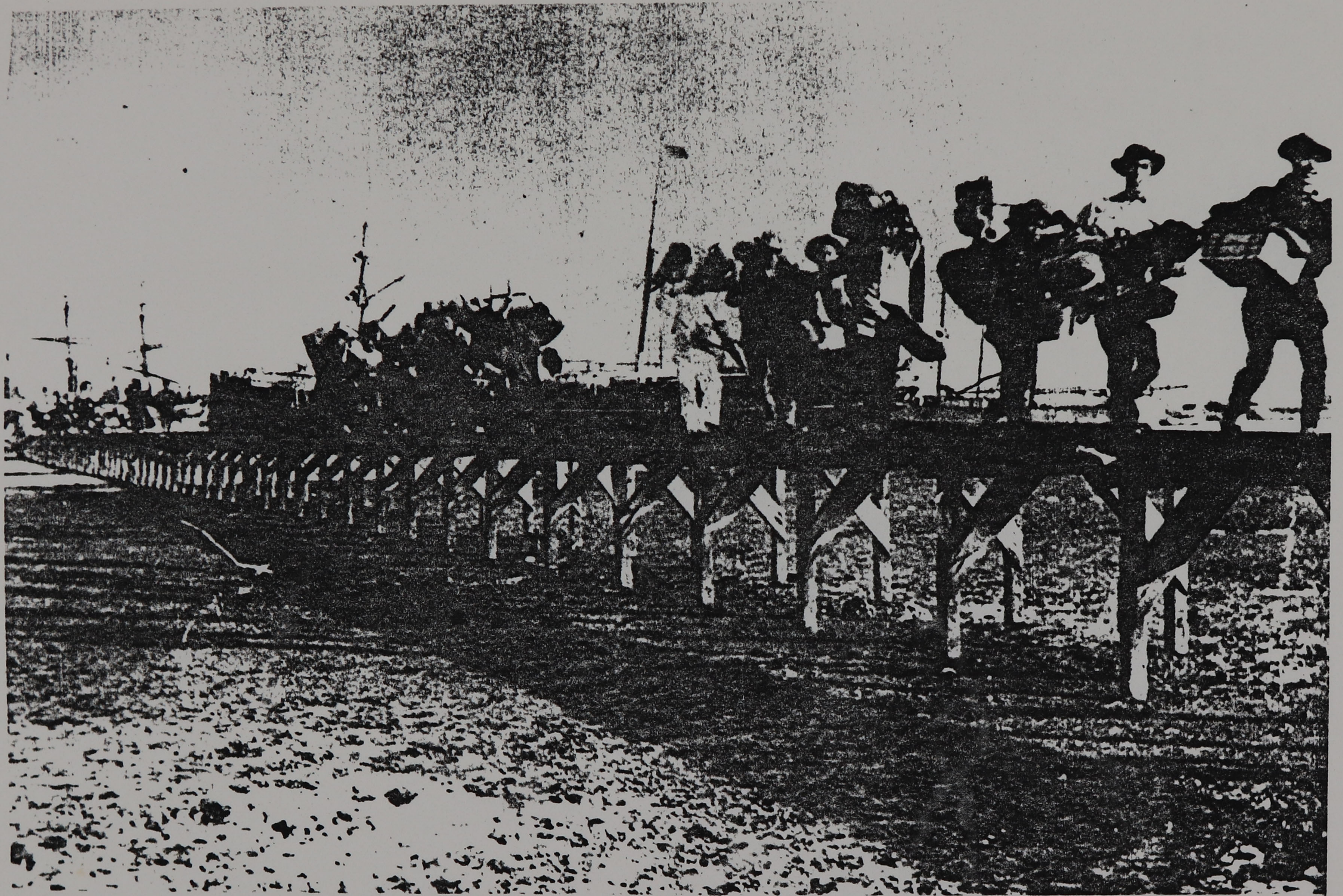


Carol Yoshida Sunahara
(sansei generation)



J
A
P
A
N
E
S
E

I
M
M
I
G
R
A
N
T
S



Japanese immigrants on the bridge to Quarantine Island, Honolulu, 1893 (courtesy of Hawaii State Archives).

The immigrants had to walk down the "China Bridge" to enter the Immigration Station on the sandy island a mile offshore in Honolulu Harbor. The immigrants were kept in the station, surrounded by a fence, from 1 to 2 weeks to meet the quarantine requirement of 18 days following departure from Japan. When the epidemic of bubonic plague struck Honolulu, the confinement period was extended.

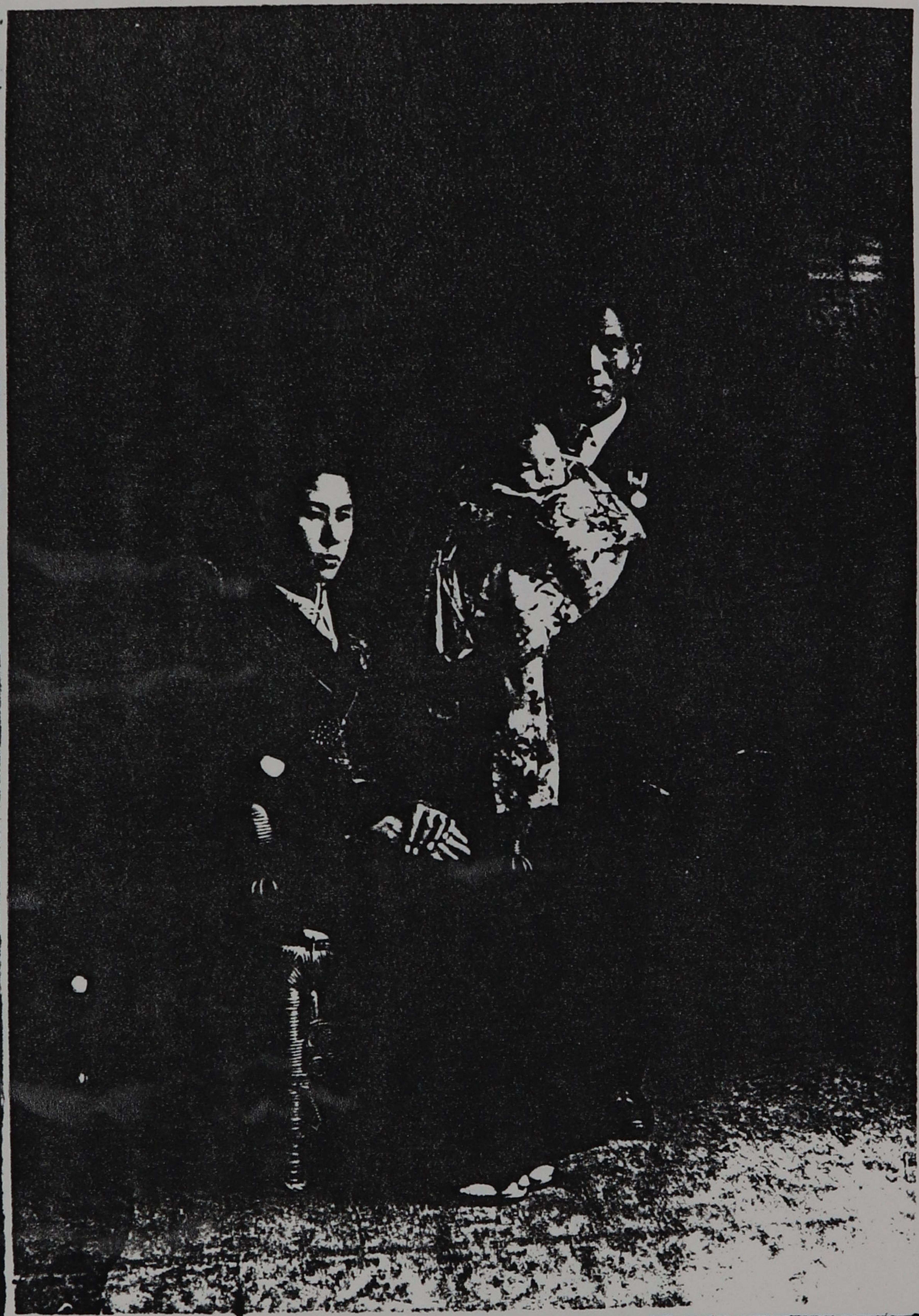
1893, Japanese immigrants happy to be on land. Japanese immigrants carrying their goods all the way from Japan.



View of Honolulu Harbor from Punchbowl showing the Immigration Station on Quarantine Island off Honolulu Harbor, ca. 1890s.

Honolulu Harbor 1890's

This is where Japanese immigrants arrived. Their first glimpse of Oahu.



Oahu

Kise and Keitaro Nagai
w/ Haruko 1910

Kise Yoshioka Nagai sitting in her silk kimono with Keitaro,
her husband standing on the side of her holding Haruko. Haruko,
not even one year old. 1910 Kise doesn't look very happy,
perhaps she still thinks of her first baby son who had been born dead.

The Three Women in the Nagai Family: Kise, Haruko, and Teruko



Haruko, Teruko, Kise
1915

The Nagai women still wearing their beautiful kimonos with pride and respect for their Japanese heritage.



Japanese community and village street life

THE NAGAI FAMILY PORTRAIT



989-3388e

1914

The Nagai family

Keitaro
w/
Teruko
on his lap

Kise standing
behind
Haruko

Kise dressed in western clothes, Haruko dressed in her Japanese kimono and keitaro and Teruko dressed in western wear as well.

1914



Olaa Hongwanji, established in 1902, island of Hawai'i, ca.
915 (Iwasaki Collection).



Wainaku plantation village, island of Hawai'i, 1890s (J. A. Gonçalves, photographer).

A wooden flume and pipes to bring water from the hill are visible. A house with kōwhiri in the center appears to be the chief's residence.

In 1890, Japanese plantation village

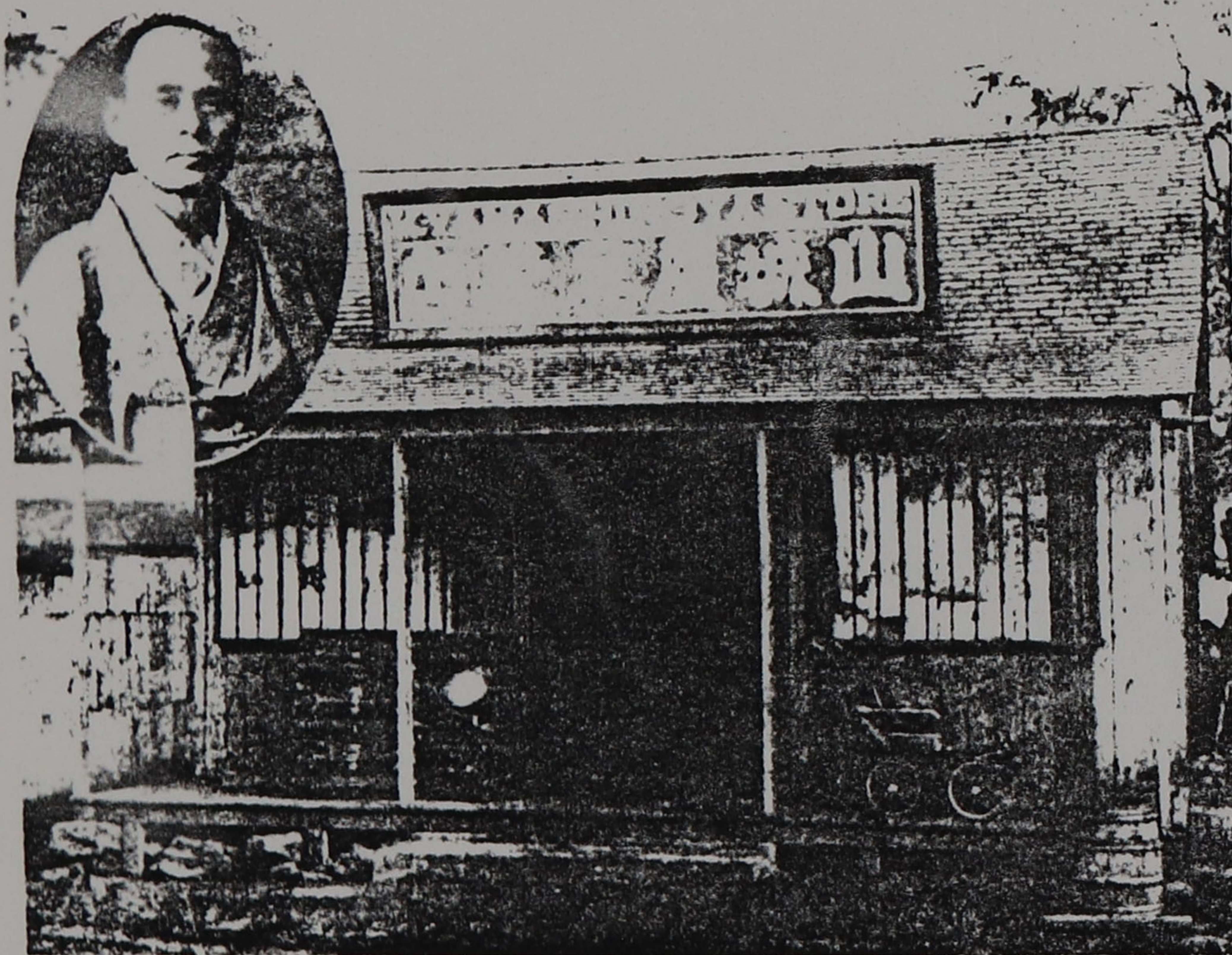


Ogata watchmaker, River Street, Honolulu, ca. 1914.

Owner Umetaō Ogata came to Hawai'i from Yamaguchi in 1902.



Japanese tailor shop, ca. 1910.



Yamashiroya dry goods store, Waimea, Kaua'i, ca. 1914.

Owner Kenhichi Yamashiro came to Hawai'i in 1890 from Yamaguchi.



Waimea Pottery Factory, Waimea, Kaua'i, 1915.

The factory was established by Hirobei Tabata, from Yamaguchi in 1915.

Japanese community/ store shops, tailor shop, dry good store and pottery factory 1910-1915



Funeral scene amidst cane fields, 1915 (Iwasaki Collection).

Japanese Funeral scene in the cane fields, 1915