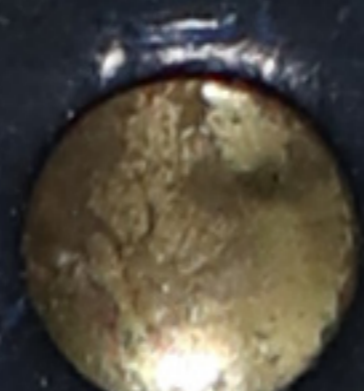
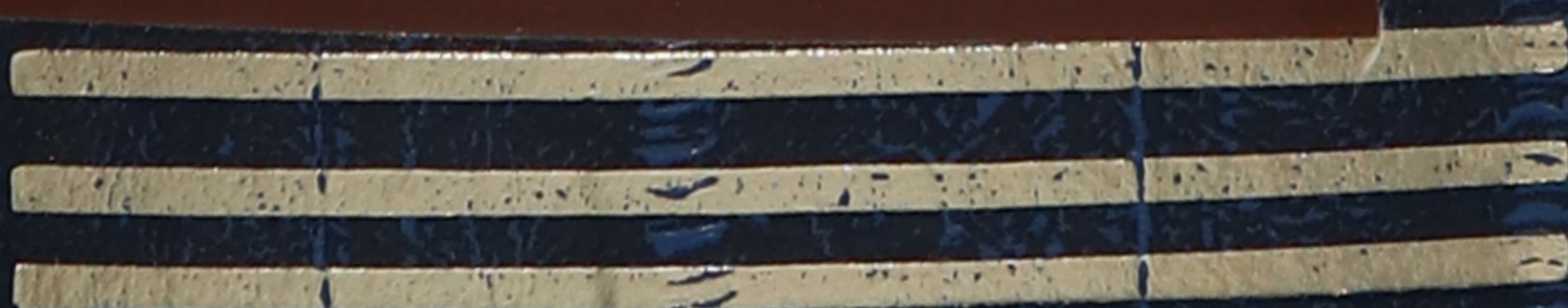






9

JAPAN 1982



THIS SIDE  
TO SHEETS

JAPAN TOUR  
11/5/1982



LAX  
W/IRENE,  
STACEY, TERRY  
AND  
LOUISE





MARGE  
AND  
ME

IN FLIGHT  
VIA SINGAPORE  
AIRLINES



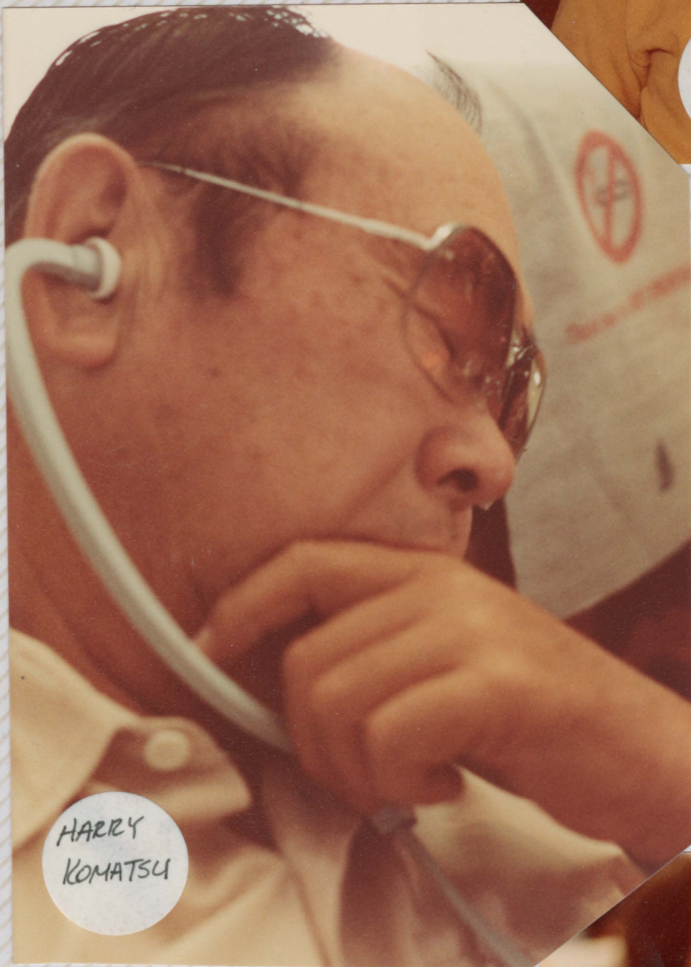
LOUISE  
&  
IRENE



HARLY  
&  
BETTY  
SHISHIDO



TAK  
&  
BEV



HARRY  
KOMATSU



JOHN  
SAKAMOTOS



ARRIVED  
IN TOKYO  
11/5 9:30 PM



OUR 1ST  
STOP  
PACIFIC HOTEL





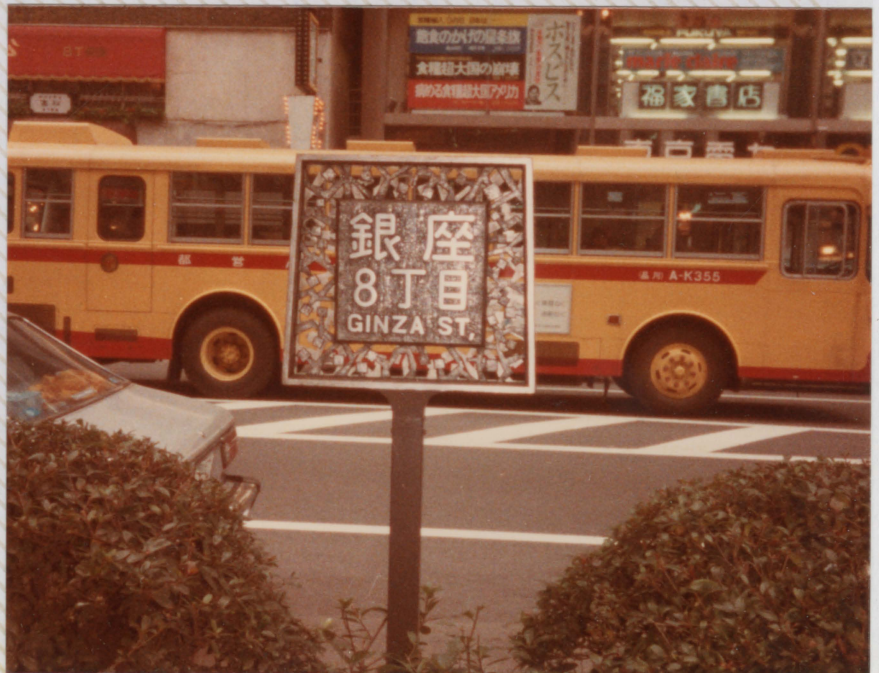
GROUNDS  
OF  
HOTEL  
PACIFIC



1ST  
ORIENTATION  
WITH  
BOB



OFF TO  
GINZA  
SHOPPING  
TOUR









HARAJUKU  
CENTER





IRENE  
&  
MARGARET



CHUO  
EXPRESS  
WAY



LEAVING  
TOKYO FOR  
HAKONE  
11/7/82







TAKEN  
ENROUTE  
FROM BACK  
SEAT OF  
BUS



HOTEL  
KOWAKI EN  
(HOT SPRINGS)



ANOTHER  
PIT STOP





DRESSED  
IN KIMONOS  
FOR DINNER.





LOUISE

BEAUTIFUL  
HOTEL GARDEN  
IN BACKGROUND



TOMEI HIGHWAY  
AS WE PASSED  
MT. FUJI

TOLL  
GATES ON  
HIGHWAY



BEAUTIFUL  
MAJESTIC!  
MT. FUJI  
11/8/82





A CLOUDY  
DAY WITH  
JUST MINUTES  
TO TAKE A  
SHOT OF  
MT. FUJI





THE  
5TH  
STATION



HIKONE  
PRINCE  
HOTEL





DINNER  
GROUP AT  
HOTEL HIKONE





SUNRISE  
FROM HOTEL  
HIKONE  
11/9/82





OUR TOUR  
OF HIKONE  
PALACE





MORE OF  
THE PALACE  
"SHOGUN" FILMED  
HERE





LOUISE  
AND  
IRENE WALKING  
THE GROUNDS  
OF HIKONE  
PALACE





HIKONE  
VILLAGE



NATIVE  
KID



PALACE  
SHOT FROM  
AFAR



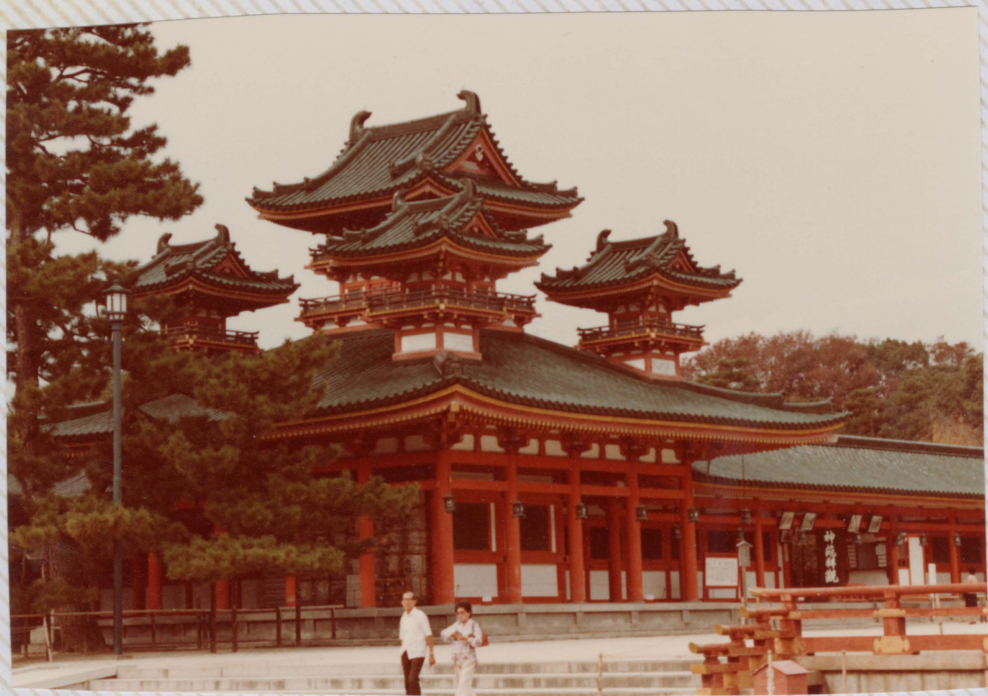
NIJO CASTLE  
IN KYOTO



SCHOOL  
CHILDREN ON  
EXCURSION  
HEIAN SHRINE

IN KYOTO  
11/9  
KYOTO TOKYU  
HOTEL







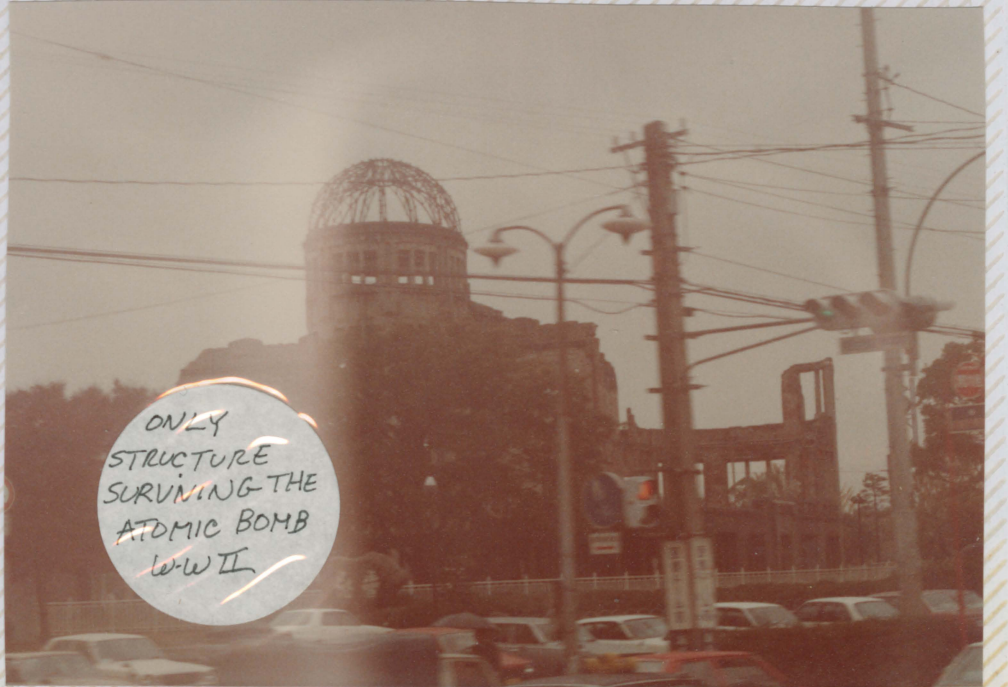


GOLDEN  
PAVILION  
&  
GROUNDS



ON THE  
ROAD AGAIN  
CHUGAKU  
EXPRESSWAY  
TO  
HIROSHIMA

HIROSHIMA  
11/10/82



ONLY  
STRUCTURE  
SURVIVING THE  
ATOMIC BOMB  
W-W II



PEACE  
MEMORIAL  
PARK IN  
MEMORY OF  
ATOMIC BOMB





STUDENTS  
ON EXCURSION  
AT MEMORIAL  
PARK  
HIROSHIMA







MEMORIAL  
TOMBSTONE IN  
MEMORY OF  
CHILDREN  
LOST IN  
BOMBING





FERRY  
CROSSING FROM  
HIROSHIMA TO  
BEPPU  
OITA KEN



OVERNITE  
CROSSING TO  
KYUSHU  
11/1/83

INLAND  
SEA  
CROSSING

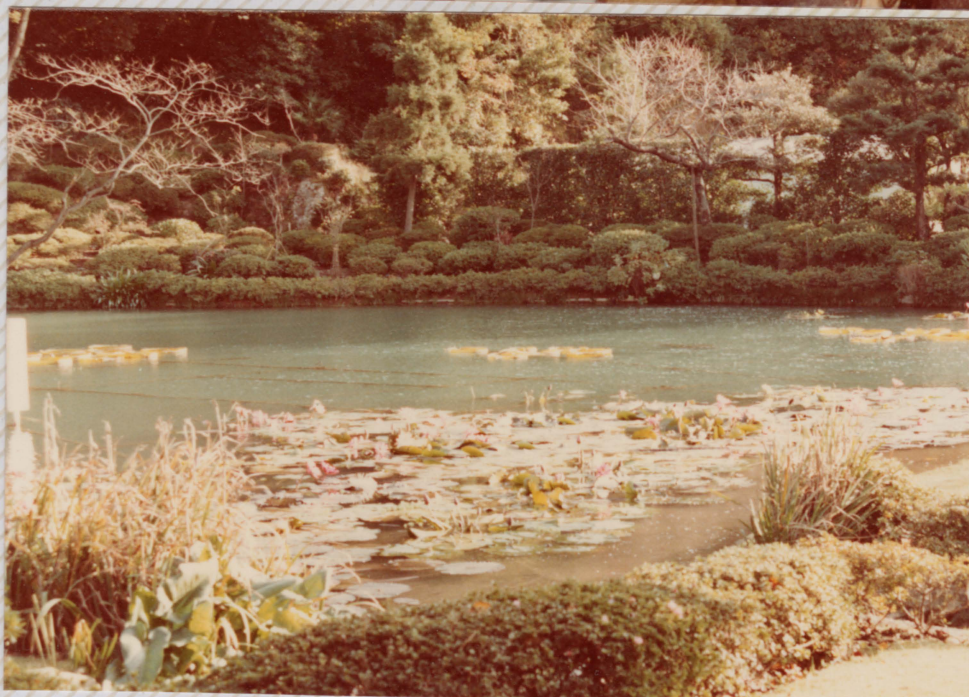


SUNRISE  
ON THE  
HORIZON





**Beppu** (pop. 132,000), a spa town of international fame, boasts an abundance of hot springs, which yield an aggregate of 100,000 kl. (26,400 gallons) of hot water per day. Of the eight spas in Beppu, Kannawa is best known for its numerous *jigoku* ("hell" boiling ponds), ejecting mud into the air. The largest is called *Umi-jigoku*, a "hell" of the color of the sea. The *Chinoike-jigoku* is vermilion in color. A round of the "hells" is a must for visitors to Beppu.





BEPPU  
HOT SPRINGS



KANNAWA  
JIGOKU  
BOILING  
PONDS



CHINOIKE  
JIGOKU  
PONDS





GEYSER  
AT  
9:00 AM





MT.  
TAKASAKI  
MONKEY  
COLONY







BACK ON  
THE BUS  
AND HITTING  
THE ROAD  
AGAIN



MIYAZAKI

SUN HOTEL  
PHOENIX  
11/11

ひえつき4番 グリーンの上空より



●練習場…面積20,000㎡、全長252メートル打ちっぱなし(20打席)、バッティンググリーン(4)



〈交通〉  
 フェニックス  
 高原カントリークラブまで  
 宮崎空港からタクシーで45分  
 宮崎駅からタクシーで35分  
 ゆとりあるゴルフライフを  
 つくるクラブハウス

- フロント ●ロビー ●売店
- 男・女ロッカー室 ●談話室
- 大食堂 ●コンペルーム ●男子大浴場 ●サウナ ●貴賓室
- 駐車場…250台収容

### フェニックス3つのホテルと2つのゴルフ場



### 姉妹コース フェニックスカントリークラブ

宮崎市住吉海岸 ☎(0985)39-1301  
●27ホール ●9,693メートル(10,600ヤード) ●バー108

- ホテルフェニックス ●シーサイドホテルフェニックス ●サンホテルフェニックス
- フェニックスカントリークラブ ●フェニックス高原カントリークラブ
- 宮崎国際会議場 ●自然動物園 ●テニスコート ●野球場 ●自然運動公園 ●ホウリング場 ●流れるプール

〈予約センター〉 ☎(0985)39-3131

〈案内所〉

- |                                     |                |
|-------------------------------------|----------------|
| 東京 / 東京都中央区日本橋2-8-11 (〒103)         | ☎(03)271-9022  |
| 名古屋 / 名古屋市中村区名駅4丁目8-10白川第3ビル (〒450) | ☎(052)582-1905 |
| 大阪 / 大阪市東区瓦町3-15 中山ビル (〒541)        | ☎(06)201-3991  |
| 広島 / 広島市中区大手町2-7-7 小松ビル (〒730)      | ☎(0822)46-8717 |
| 福岡 / 福岡市中央区渡辺通4-10-10松下渡辺ビル (〒810)  | ☎(092)771-7719 |

緑ゆたかなゆとりの36ホール



# フェニックス 高原カントリークラブ



フェニックス高原カントリークラブ  
宮崎県高岡町二反野原 ☎(09858)2-1212

# 1年中ゴルフが楽しめる暖かい宮崎・フェニックス高原カントリークラブ



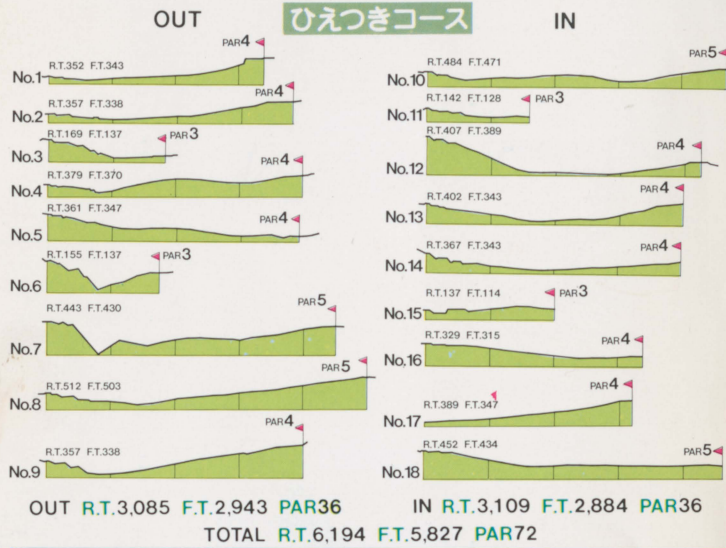
ひえつき18番



ひえつき7番



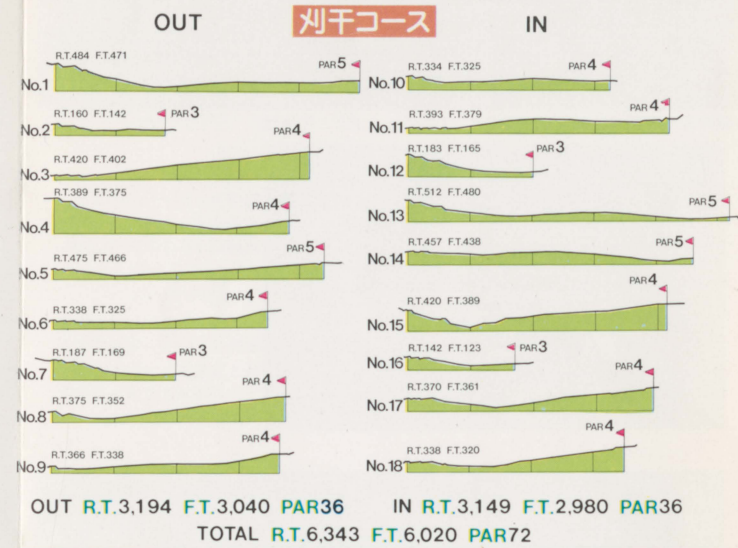
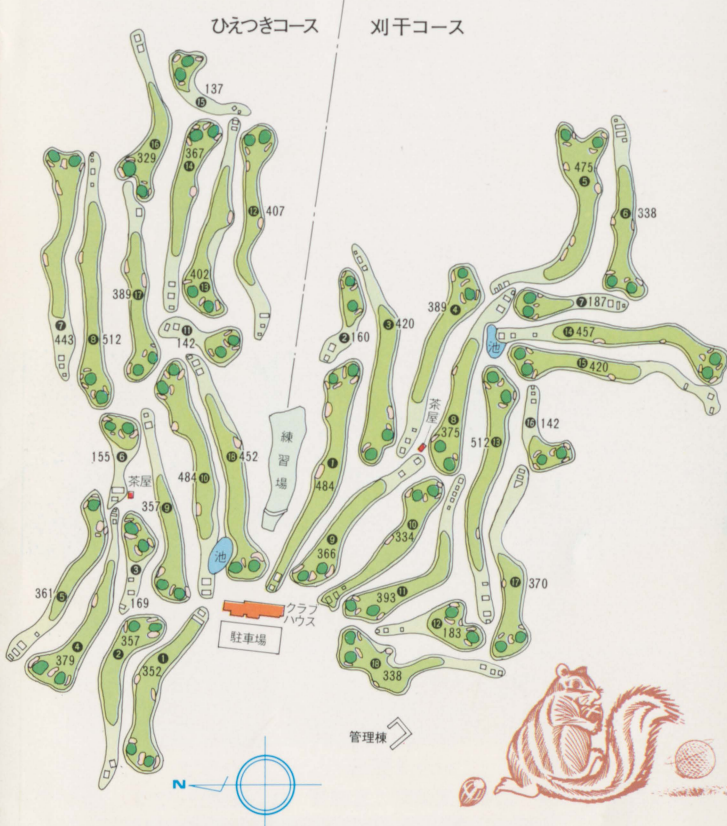
刈干1番



ひえつき17番 グリーンの上空より

## ゴルフのだいご味がたっぷり味わえるゆとりの36ホール

南国宮崎の青空の下、視野いっぱいに広がる緑の世界。  
一年中暖かく冬でも自由にプレーができます。味わい深い  
フラットなひえつき・刈干両コース、ゆとりの36ホールで  
のびのびと思うぞんぶんゴルフをお楽しみください。



刈干1番



WE'RE  
HEADED FOR  
KAGOSHIMA -  
COUNTY  
SCENERY





SOUTHERN  
MOST POINT  
IN KYUSHU



KAGOSHIMA

11/12/82





### SAKURAJIMA — KAGOSHIMA BAY

**Sakurajima**, accessible in 20 min. by ferry boat from Kagoshima City, is a representative volcano still active in Japan. Among its many eruptions on record, the outbreak of 1914 is world famous. The lava from the crater blocked the 500 m. (1,666 ft.) wide channel which formerly had separated Sakurajima from the mainland of Kyushu. Sakurajima, once an island, has now become a peninsula. Motoring along the highway running over the monstrous lava field, tourists can appreciate the rare natural phenomenon.

SAKURAJIMA  
VOLCANIC  
ERUPTION LAVA





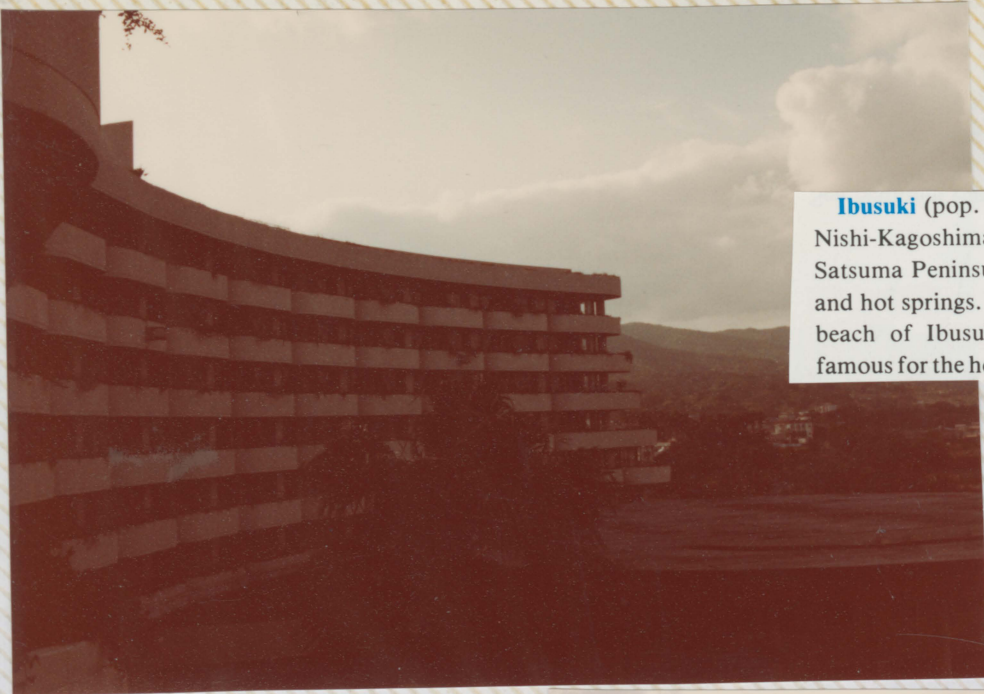


SAKURAJIMA  
KNOWN FOR  
THE HOGE  
DAIKON



AROUND THE  
WATERWAYS  
OIL TANKS &  
VOLCANO





**Ibusuki** (pop. 32,000), 1 hr. by rapid service train from Nishi-Kagoshima, is situated at the southern tip of the Satsuma Peninsula. It is noted for its tobacco production and hot springs. Most of the spas lie along the 10 km. long beach of Ibusuki. Ibusuki hot springs are particularly famous for the hot spring baths.

IBUSUKI  
HOTEL





BEAUTIFUL  
HOTEL  
GROUNDS





IRENE  
WITH SOME  
GUY SHE  
PICKED UP

KUMAMOTO  
TOKYU INN  
11/14



AFTER  
1 NITE STAY  
AT HIROSHIMA  
GRAND BACK  
IN KYOTO



NARA  
DEER  
PARK

BOB OUR  
TOUR GUIDE  
TODAIJI  
TEMPLE





NARA  
DEER PARK  
NIJO CASTLE  
HEIAN SHRINE





BULLET  
TRAIN TO  
TOKYO



SCENERY  
TAKEN  
FROM BULLET  
TRAIN





MT. FUJI  
TAKEN FROM  
BULLET TRAIN  
KYOTO TO TOKYO







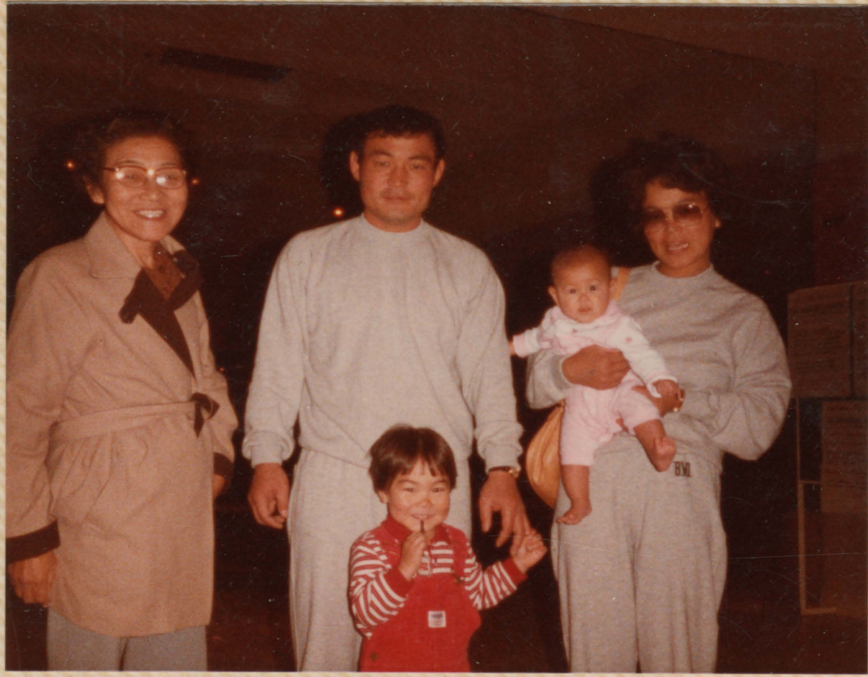


BACK TO  
PACIFIC HOTEL  
READY TO LEAVE  
FOR HOME





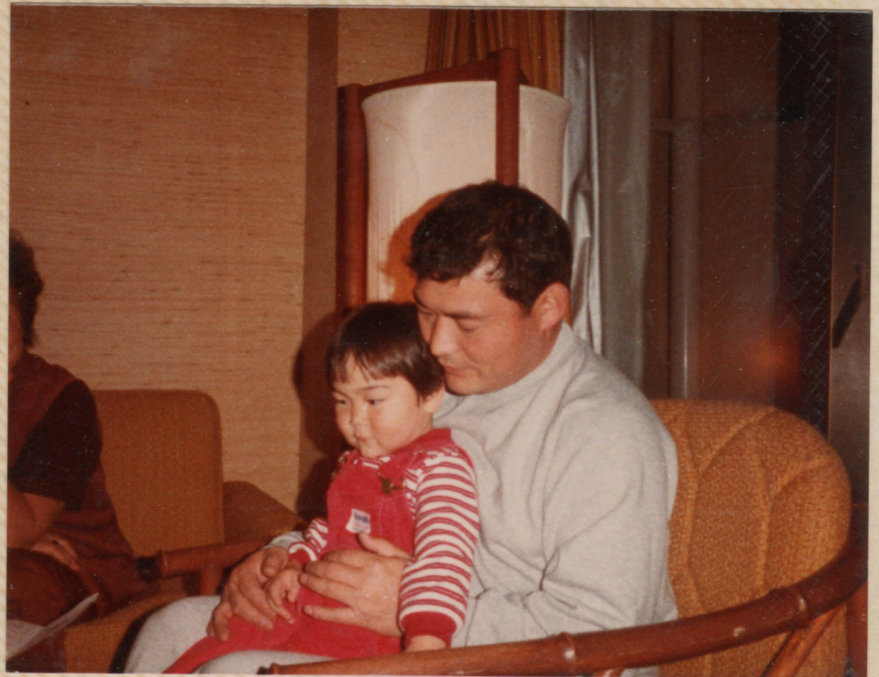
END OF  
OUR JOURNEY



RELATIVES  
IN JAPAN



COUSIN  
TANEKO





STOPS  
ON TRIP  
TO FUKUOKA







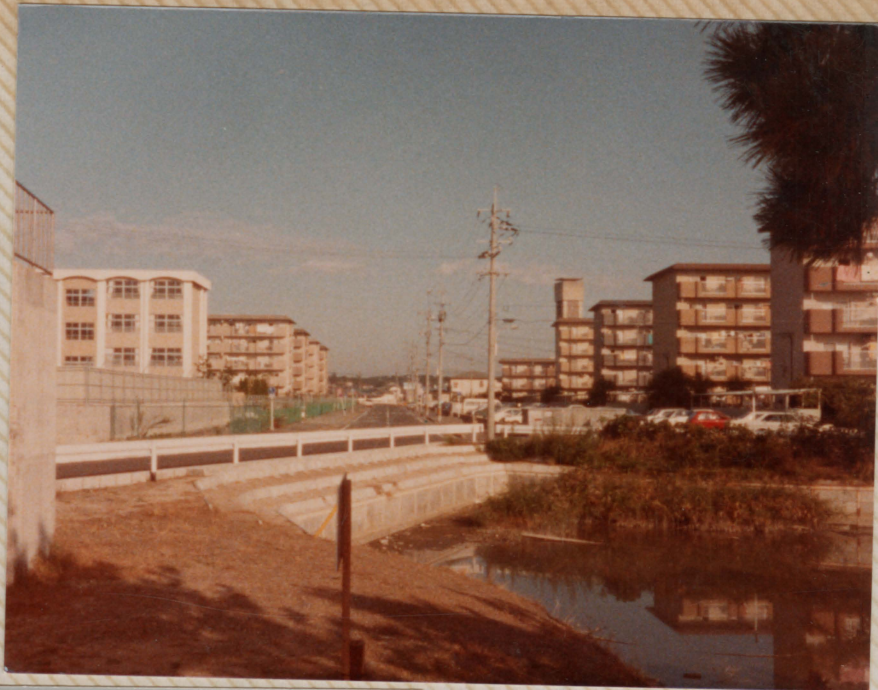


**Fukuoka** (pop. 998,000), famed for its *Hakata-ori* silk textiles, *Hakata-ningyo* dolls, and Dontaku and Yamagasa festivals, is the political, economic, cultural and communication center of Kyushu. Known since ancient times as a leading trading port of Japan, the city played a very important role in bringing the culture of the Nara and Heian periods into full flower. It was the scene of many fierce combats at the time of the Mongol invasions in 1274 and 1281. After undergoing many vicissitudes, it has now become the most modern metropolis in western Japan. The district along Tenjincho Street is a thriving business center, and Ohori Park near the city hub is a good refuge for city dwellers.



IN NATA  
HOME OF  
ICHI BEI  
IMABAYASHI

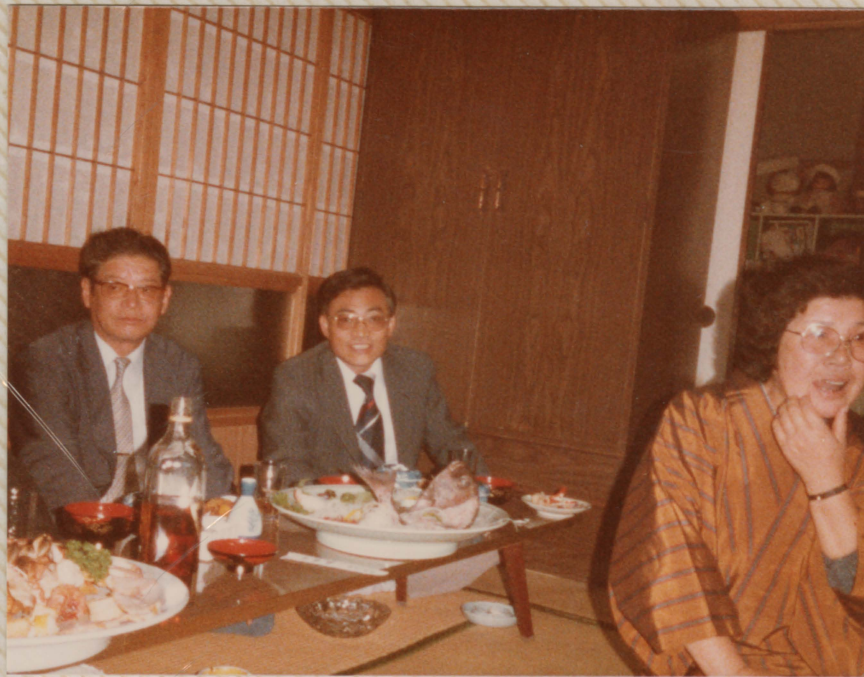
SURROUNDING  
AREA AROUND  
NATA



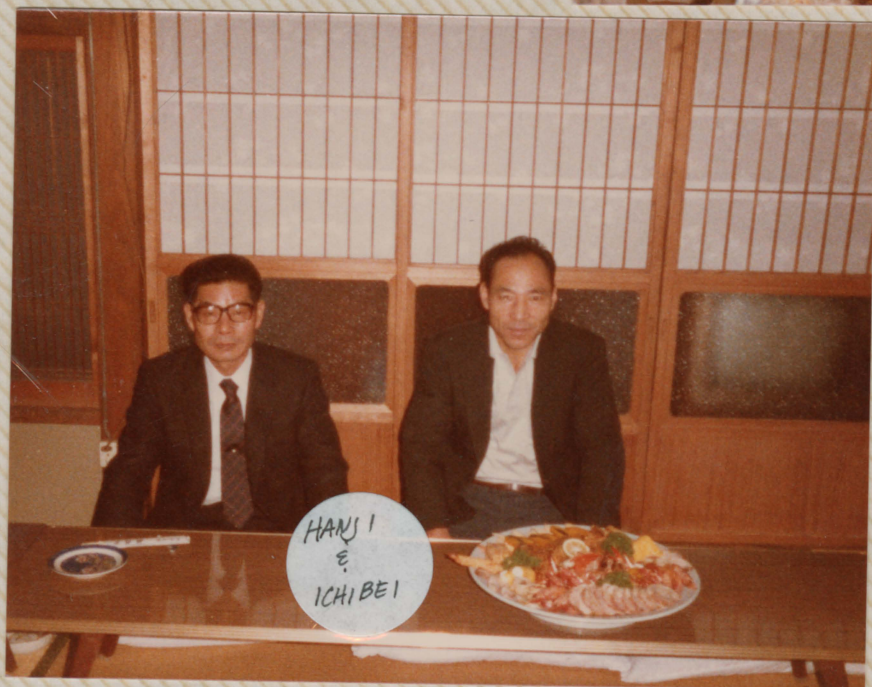


DINNER  
IN OUR  
HONOR WITH  
RELATIVES





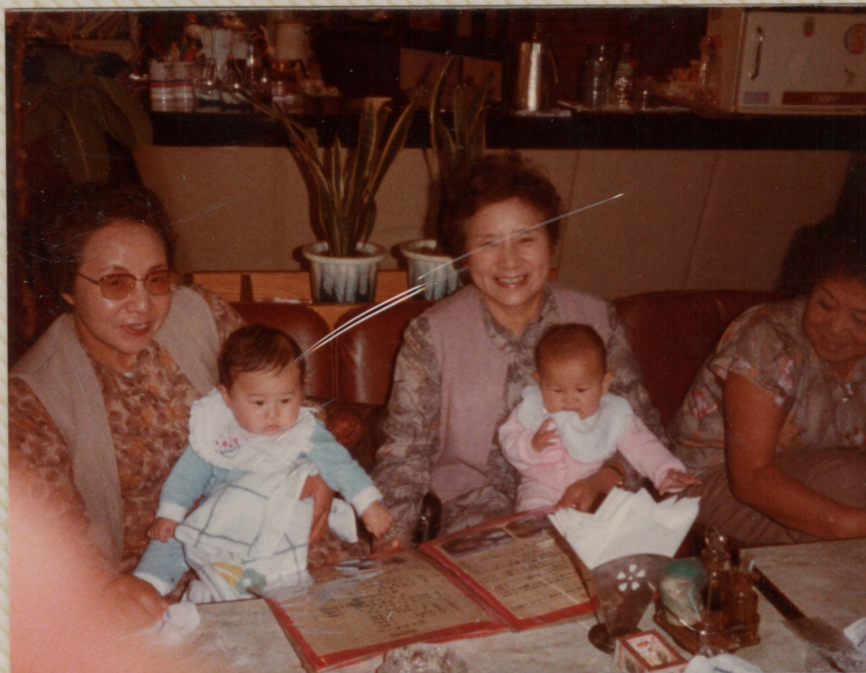








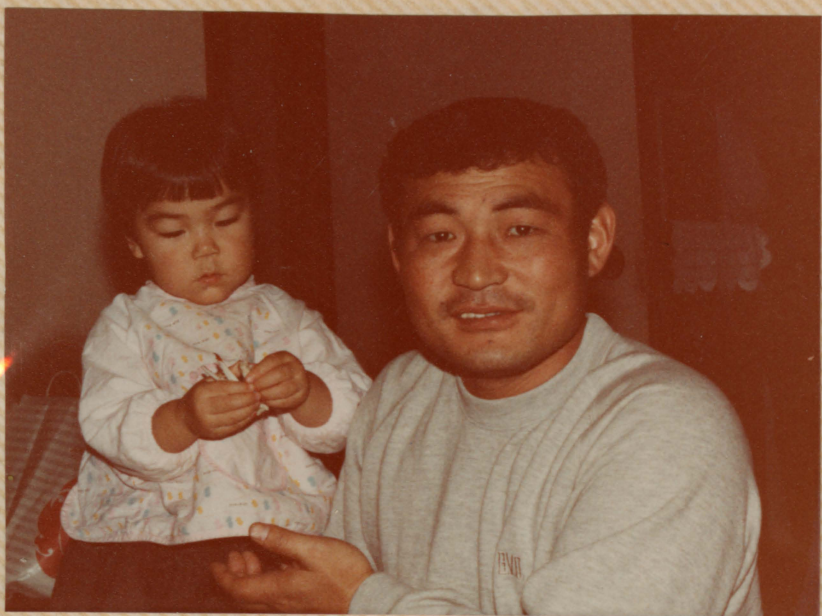












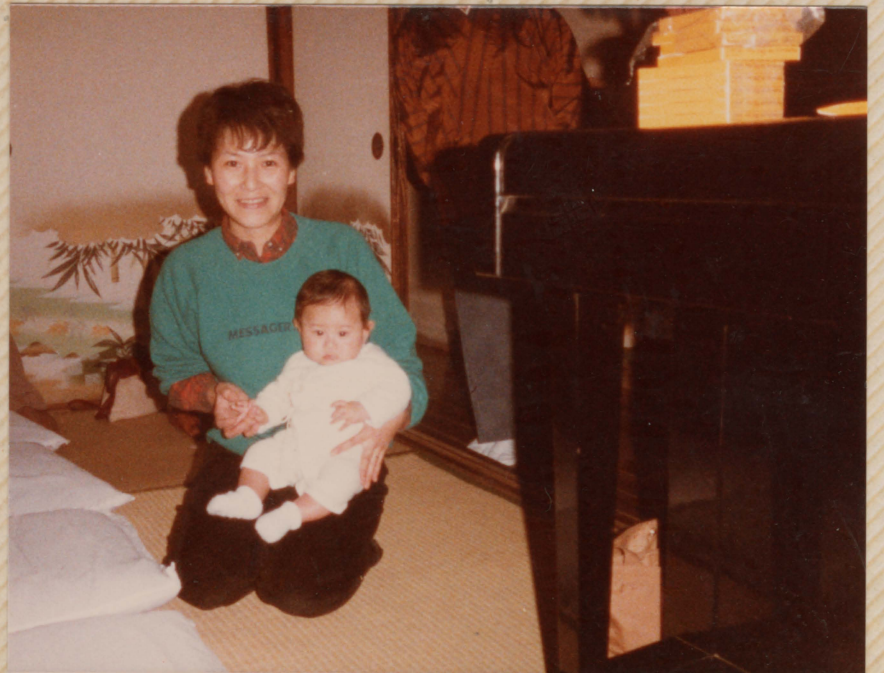
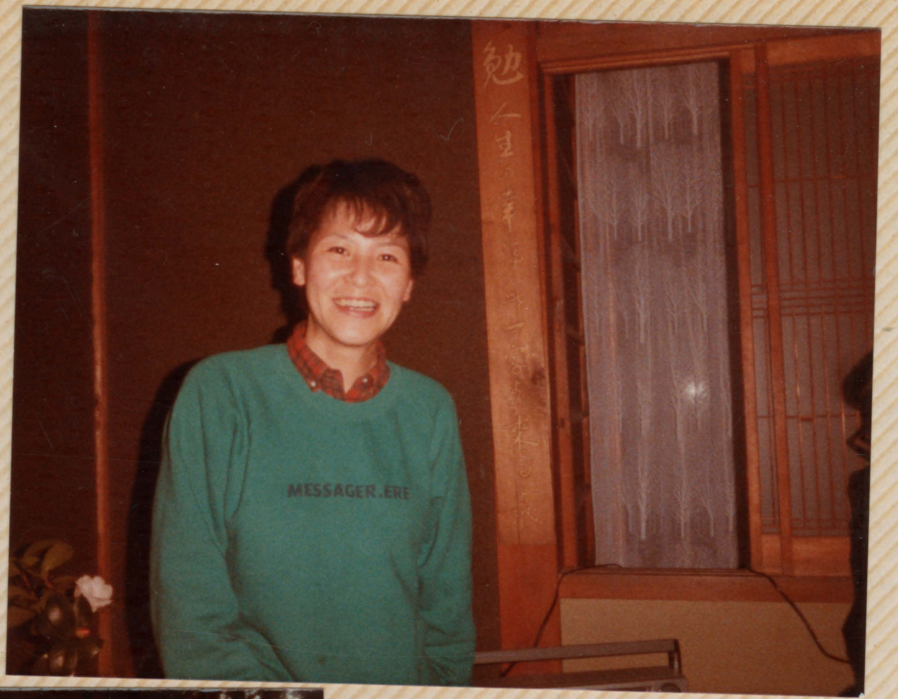














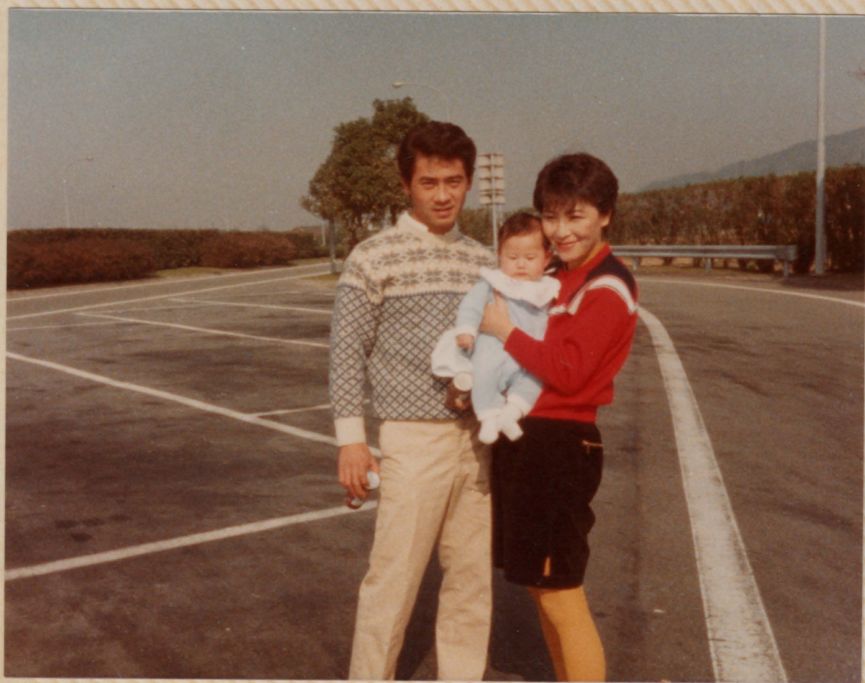
MT. ASO  
VOLCANO



## ASO NATIONAL PARK

**Aso National Park:** Volcanic Mt. Aso represents the principal part of Aso National Park. The mountain, which is a double conide volcano, a rare phenomenon, is world-famous for the grand scale of its crater basin. The crater basin which marks the original crater measures 16 km. (9.9 mi.) from east to west and 23 km. (14.3 mi.) from north to south. At its center soars Mt. Nakadake constantly emitting high-temperature gas and sulfurous fumes, presenting a violent and awe-inspiring sight. To reach the crater three climbing paths are available, and sightseeing motorcoaches are in operation. Further up the rim of the crater, ropeways run from two directions for visitors to survey its interior with ease. The outer rim of the crater basin is a plateau formed by a series of lovely undulations, on which horses and cattle are seen grazing leisurely.









TAKEN  
AT YAEKO,  
MIYANO'S  
CONDO





10/1/77  
FUKUOKA  
AIRPORT  
RELATIVES IN  
JAPAN





THIS SIDE  
TO SHEETS

