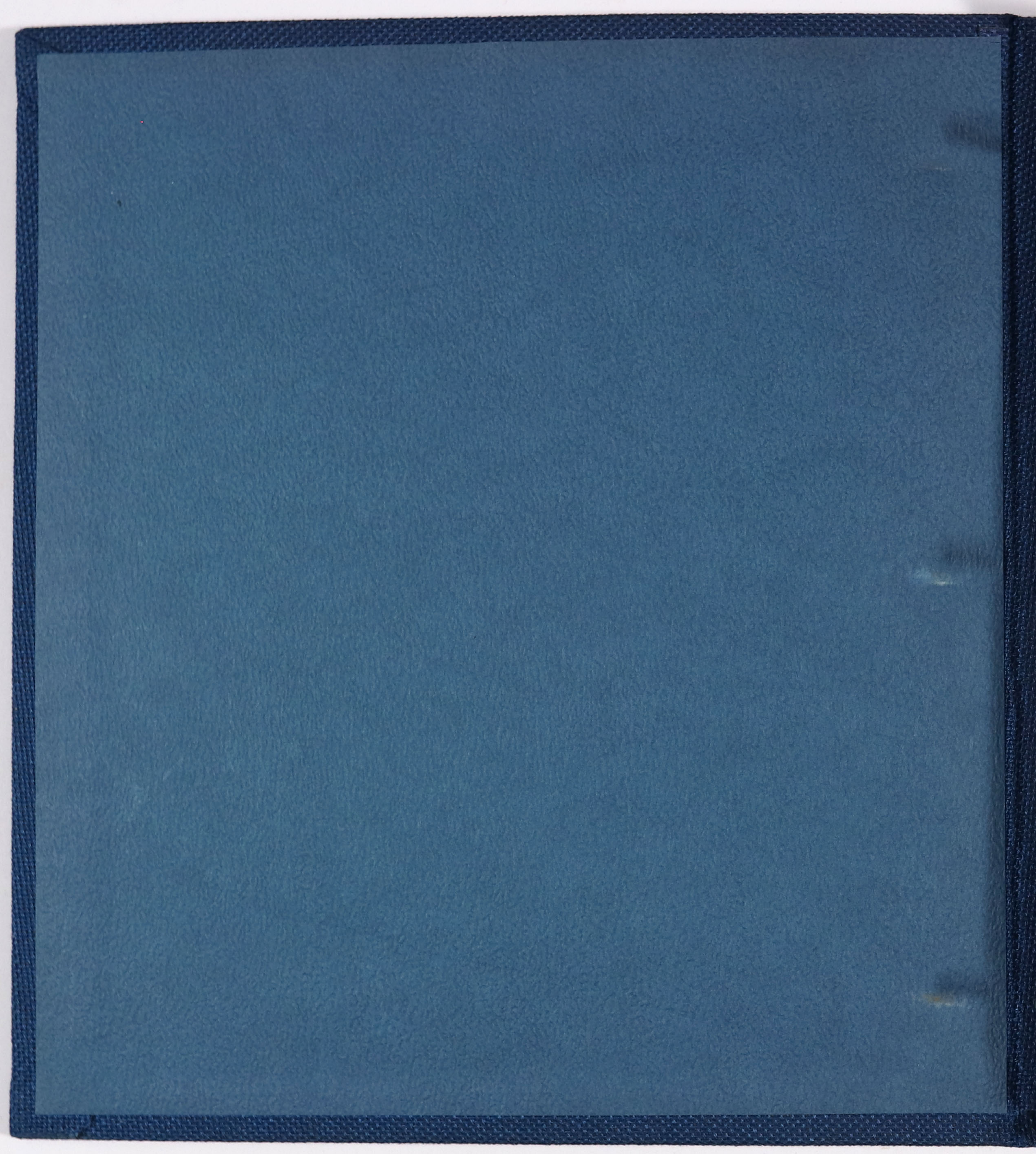


HAWAII 4/75

2

HAWAII

4/75





MAY 1975
OUR HAWAIIAN VACATION

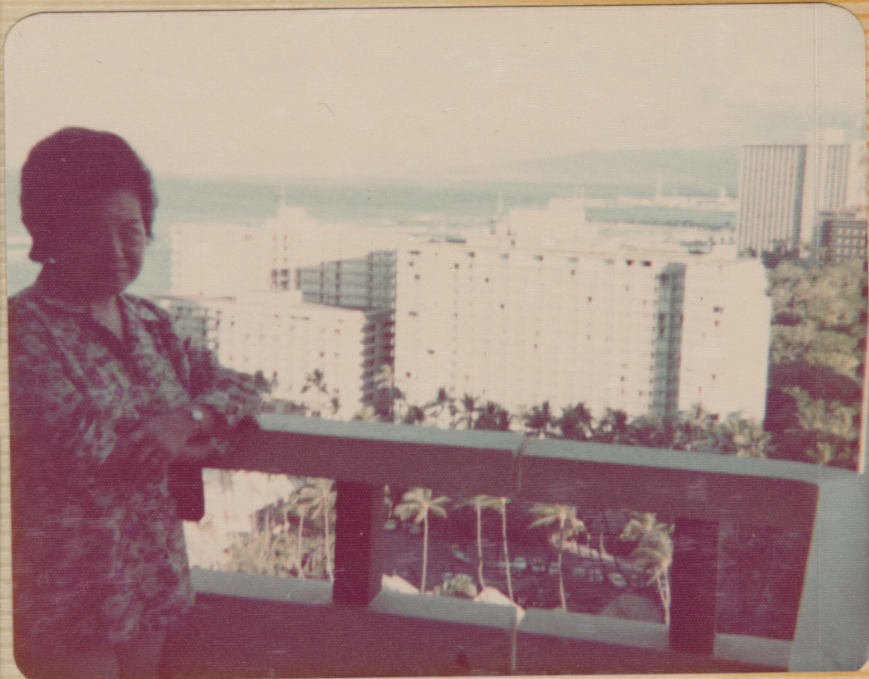


HONOLULU - OAHU
SHERATON - WAIKIKI



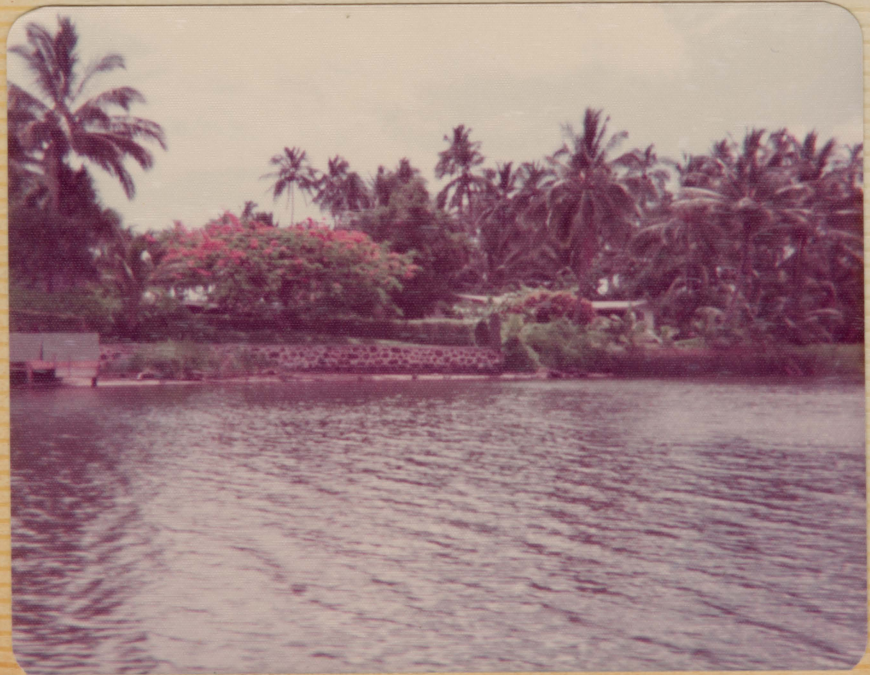
DIAMOND HEAD

WAIKIKI BEACH





COCO PALMS - KAUAI

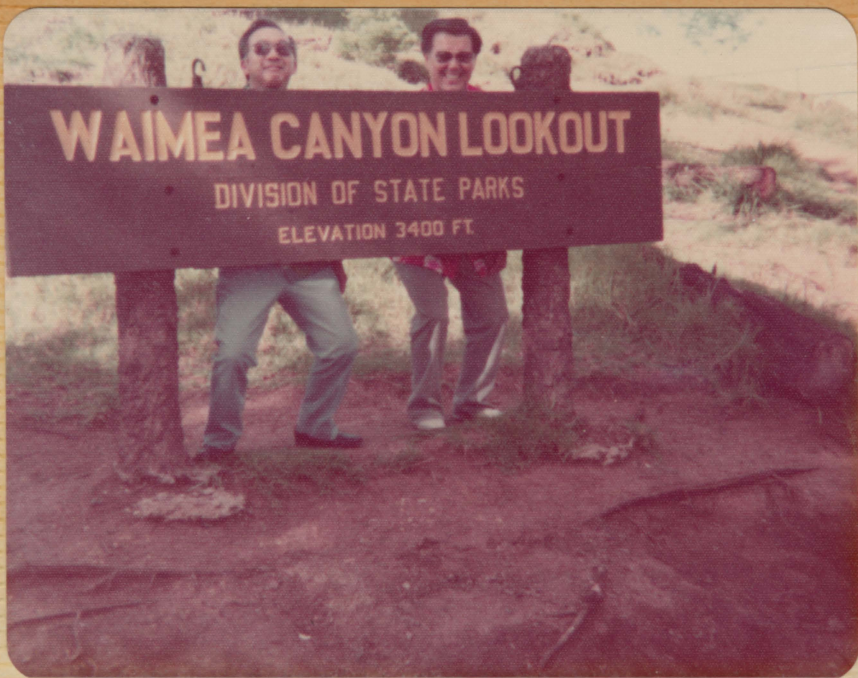




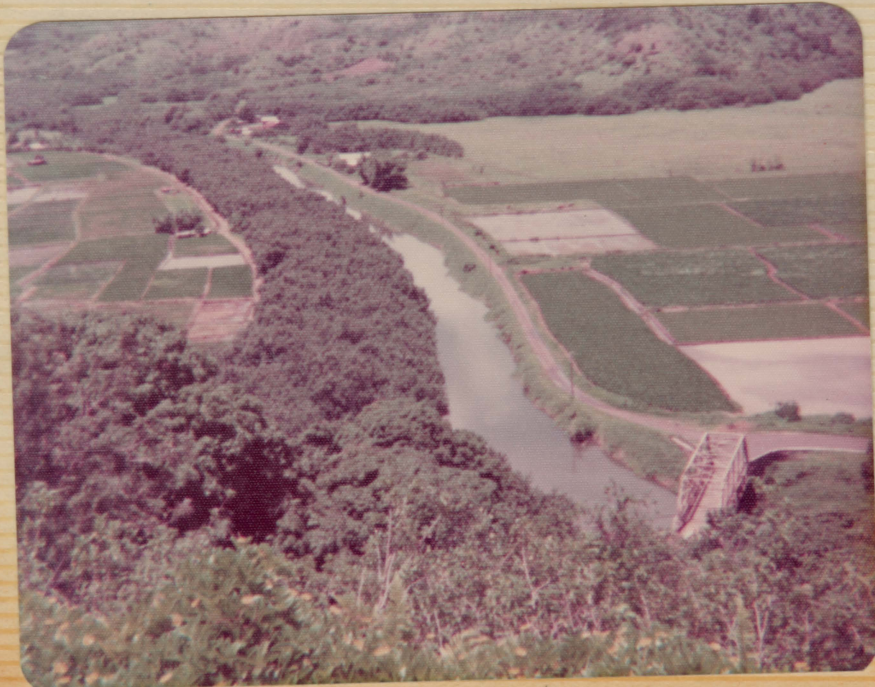
BEACHFRONT AT SHERATON KAUAI

BLOW HOLE
WAIMEA CANYON



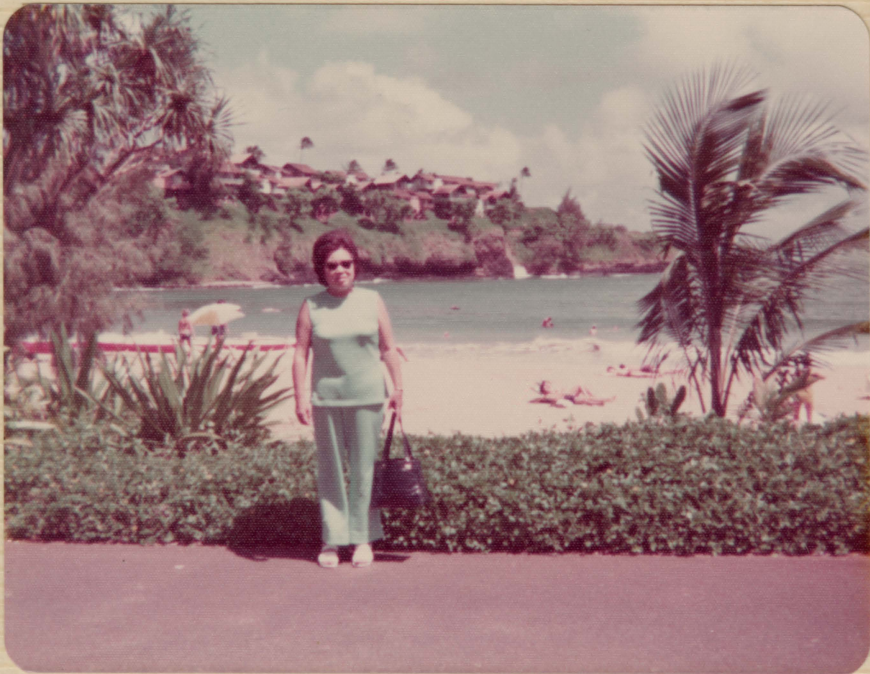




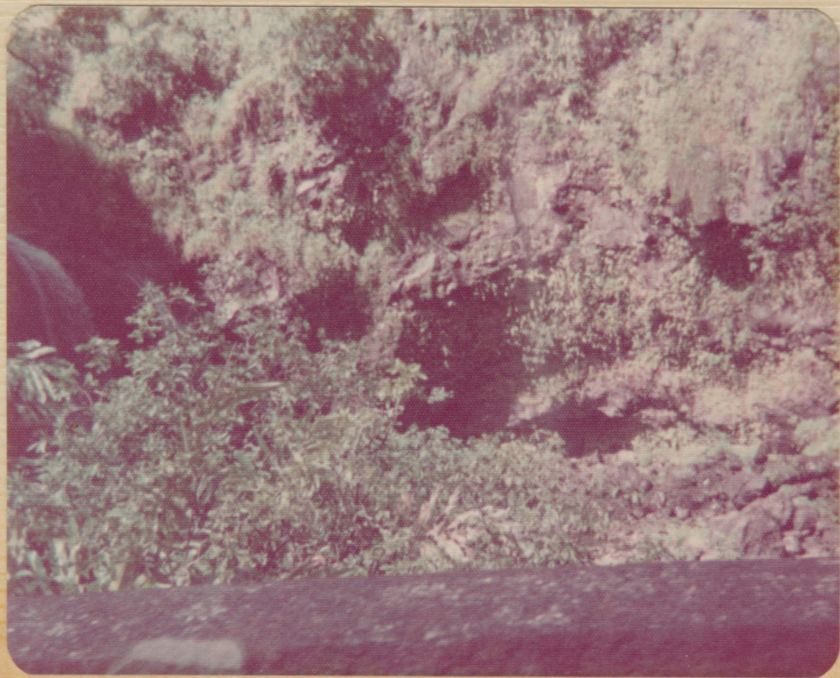




ON DRIVE TO HANA LEI VALLEY
WITH FRANK & SALLIE MATSUHARA



KAUAI SURF HOTEL GROUNDS





MAUI SURF HOTEL FROM
OUR BALCONY



ON OUR DRIVE TO HANA IN MAUI





HASEGAWA GENERAL STORE
HANA



IN HANA - HANA RANCH HOTEL



SEVEN SACRED POOLS





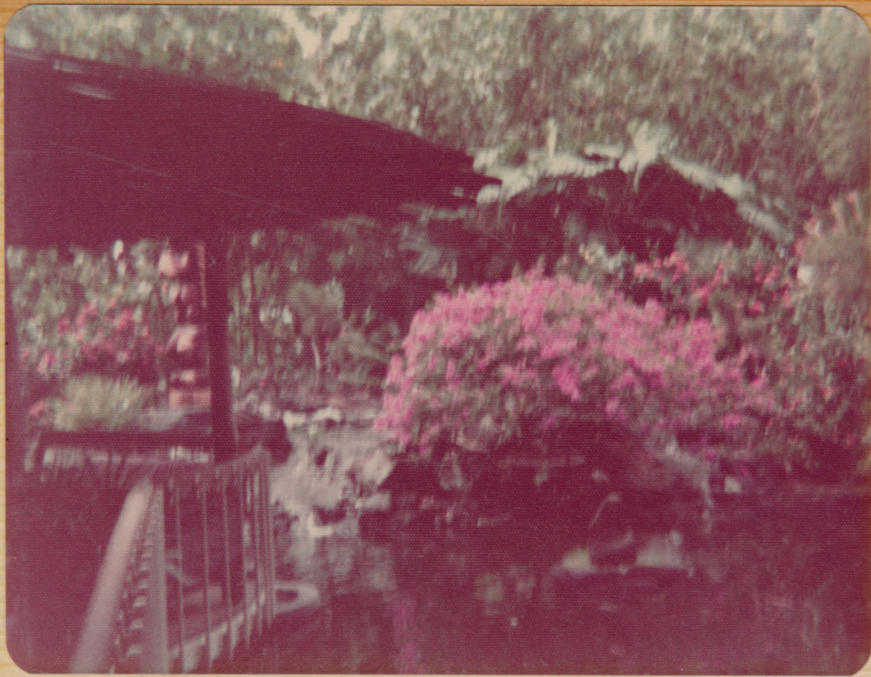
ON OUR DRIVE BACK FROM HANA



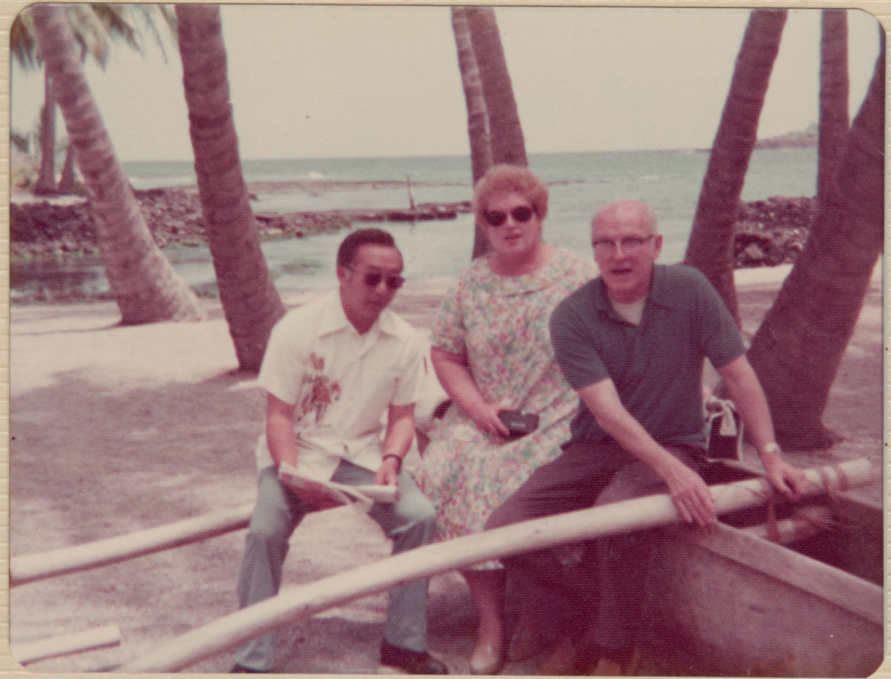
IAO NEEDLE
MAUI



KONA SURF
HOTEL GROUNDS



KONA HILTON WITH THE MAIERS
FROM THEIR HOTEL BALCONY



CITY OF REFUGE WITH
ANNA AND GUS MAIERS

MOKUAIKAUA CHURCH



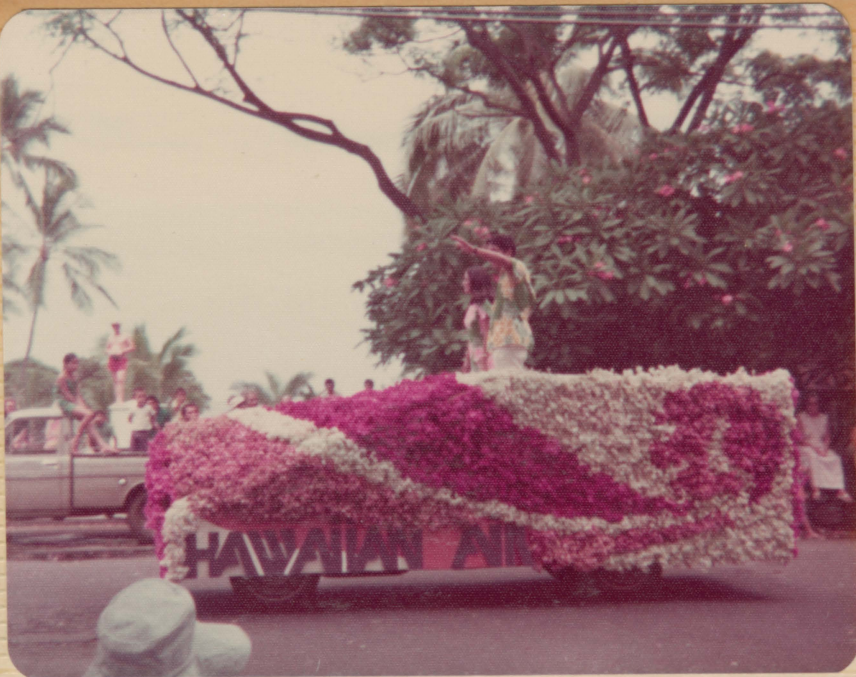
KONA SURF HOTEL GROUNDS
WITH FRANK & SALLIE



KALEKAKUA - SAKAMOTO'S
VANDA ORCHIDS



KONA VILLAGE RESORT



PARADE AT KONA
KING KAMEHAMEHA DAY



KILAUEA - VOLCANOS



NANILOA SURF FROM OUR
BALCONY



LILIUOKALANI GARDENS
HILO



K R V 6



HIROSE NURSERY - HILO



