

FRIENDSHIP TRAIN GREETED IN N. Y.

NEW YORK, Nov. 19.—(AP)—The 270-car, two-mile-long Friendship train, laden with gifts of food for France and Italy, rolled into New York yesterday to a spectacular welcome, including a City Hall reception at which it was called America's contribution to the cause of "peace-mongering."

The long string of cars carried about 13,500 tons of basic food-stuffs—valued at more than \$1,000,000—which had been donated by the populace of many cities and communities as it made its cross-continental journey from Los Angeles. It left the California city with 12 cars.

The food is scheduled to reach France on Christmas Eve and Italy New Year's Day. At City Hall, Warren R. Austin, United States representative to the United Nations, told the 25,000 gathered there that "this meeting, and all the many meetings along the trail of the Friendship train, can certainly be called 'peace-mongering.'"

By sending the food, Austin said, the American people have assured the countries of Europe "that Americans understand and are prepared to act in the future as they have in the past."

BUBBLE-GUM FREEDOM—READING, Pa., Nov. 19.—(AP)—The marines guarding the priceless historical documents on the Freedom Train are having bubble-gum trouble.

Walter H. S. O'Brien, director of the train, told members of the Reading Rotary Club yesterday that it took two men eight hours to clean the plush carpet in the train recently.

Morris Wins Promotion In Detective Job

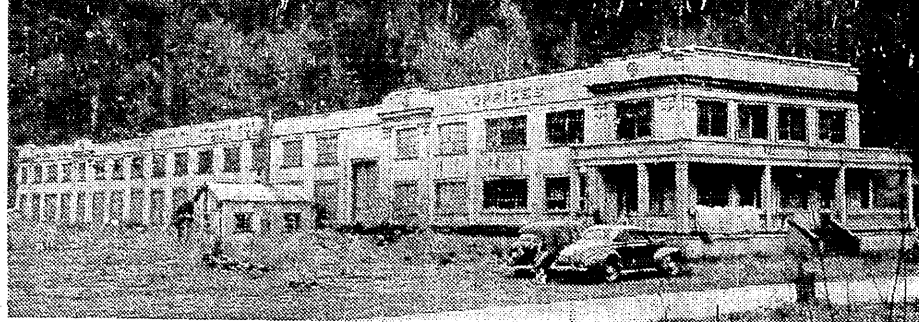
Chief of Police George D. Eastman last night announced the promotion of Capt. Robert W. Morris to supervising captain in the police detective division.

Chief Eastman earlier had announced plans to transfer Capt. Edward M. Dunn from the traffic division to the detectives as supervising captain. Today the chief said Dunn will remain in traffic.

Morris formerly was night captain in the detective division. He replaces Capt. Guy C. Vernon, who was appointed chief of the technical-services division Friday.

Dunn is en route to Seattle from Chicago, where he attended the National Traffic Institute at Northwestern University, Evanston, Ill.

County Negotiates for New Shop



PROPOSED MACHINE SHOP FOR KING COUNTY Situated near Renton, it would serve the entire county

County Commissioner William H. Sears today described as a "good buy" the building and equipment near Renton which the county proposes to acquire as a consolidated King County machine shop.

The commissioners are negotiating for the purchase of the property for \$40,000. Sears, in charge of negotiations, said the 300-by-400-foot frame construction would cost \$70,000 to duplicate and that the equipment had been appraised at \$20,000.

"The county was going to build a shop near Renton and this is nearly as good a site and will cost a lot less," Sears said. The 25-acre site adjoins the Renton-Enumclaw highway six miles east of Renton.

Equipment includes an overhead monorail crane, five lathes, three drill presses, a shaper and planer and grinders.

The building originally housed offices, a machine shop and the powerhouse of the Pacific Coast Coal Company's New Black Diamond mine.

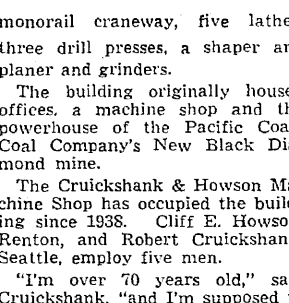
The Cruickshank & Howson Machine Shop has occupied the building since 1938. Cliff E. Howson, Renton, and Robert Cruickshank, Seattle, employ five men.

"I'm over 70 years old," said Cruickshank, "and I'm supposed to start taking it a little easy."

At present the county has a small shop in Redmond for the North Road District. The South District shop at Bow Lake burned last year.



ROBERT CRUICKSHANK



C. E. HOWSON

ton-Enumclaw highway six miles east of Renton. Equipment includes an overhead

monorail crane, five lathes, three drill presses, a shaper and planer and grinders.

The building originally housed offices, a machine shop and the powerhouse of the Pacific Coast Coal Company's New Black Diamond mine.

The Cruickshank & Howson Machine Shop has occupied the building since 1938. Cliff E. Howson, Renton, and Robert Cruickshank, Seattle, employ five men.

"I'm over 70 years old," said Cruickshank, "and I'm supposed to start taking it a little easy."

At present the county has a small shop in Redmond for the North Road District. The South District shop at Bow Lake burned last year.

CHIANG TO OPEN DRIVE ON REDS

NANKING, Nov. 19.—(AP)—The harassed Chinese government was reported today marshaling its top military talent to beat down Red forces which have made fresh inroads in North and Central China.

Dispatches from Peiping said Nationalist generals conferring there had decided on a full-scale offensive to eliminate the Red threat in the Peiping-Tientsin-Paoing triangle of Hopeh Province.

The newspaper Hsin Min Pao said Gen. Chen Cheng, army chief of staff and commander of government forces in Manchuria, would direct the offensive. Units of Gen. Fu Tso-yi's troops from Chaiar Province were reported en route south to Hopeh.

Peiping dispatches said also Communists were besieging the small rail town of Yuanshih, 20 miles south of Shihkiachwang.

At present the county has a small shop in Redmond for the North Road District. The South District shop at Bow Lake burned last year.

First Nisei Joins Juneau Legion Post

JUNEAU, Nov. 19.—(AP)—John Tanaka, believed to be the first American of Japanese ancestry to join any Alaska post, was initiated last night into Juneau Post, No. 4, American Legion.

Tanaka was valedictorian of the Juneau High School class of 1942 but was unable to participate in the graduation exercises because of military evacuation. Later he served with the Army in Italy during the war. He manages a Juneau restaurant.

The Empire MacCalum, one of four ships which plunged through heavy seas toward the island on rescue missions, reported she arrived at 1 a. m. and stood by until daylight to take aboard the crew members.

The Langleecrag also was a British ship. For five days the seamen—variously estimated at from 30 to 44 in number—were lashed by cold rain and buffeted by giant breakers while their radio operator sent out frantic messages that time was running out. One man was lost when the ship smashed on the shore reefs and broke in two early Saturday.

The average human being takes into his body about 250 gallons of water every year.

Society to Initiate Fred W. Kennedy

Fred W. (Pa) Kennedy, manager of the Washington State Newspaper Publishers' Association, will be among 36 professional men and undergraduates who will be initiated into Alpha Delta Sigma, men's advertising honorary at the University of Washington, at a banquet at 6:30 o'clock this evening in the University Commons.

Kennedy is a professor emeritus of journalism at the University. The banquet will mark the organization's 34th anniversary.

Columbus Executive Dies COLUMBUS, Ohio, Nov. 19.—(AP)—Harvey R. Young, 77 years old, advertising director, vice president and a director of The Columbus Dispatch, died today of a heart attack.

what is CO²?

Find tooth brushing an IRKSOME chore?

It's more of a pleasure with Delicious New Pepsodent

IT'S ONE TOOTH PASTE THAT REALLY TASTES GOOD!

In the candy striped package! With the cool, minty taste!

Pepsodent is another fine product of Lever Brothers Company

Dental Plates

Refined and Tightened WHILE YOU WAIT LOW COST—Takes 20 minutes—No appointment needed. Not a paste or powder, but a plastic liner. Can be washed and scrubbed; sets while you wear them. Keeps food particles from getting under plates. Feels swell. PARTICULARLY GOOD for Sore, Tender mouths difficult to fit. Thousands re-lined since 1939. A proven technique. \$5.95 SATISFACTION \$5.95 GUARANTEED Dental Plate Refine Laboratory 610 Fitel Bldg. 2nd & Pike SE. 4830 CLIP THIS AD NOW

ONE OF BURGLAR PAIR SENTENCED

Clifford J. Farrell, 34 years old, who, with his brother, Ralph, 24, confessed looting more than a dozen stores and homes in the past year, was sentenced today by Superior Judge Clay Allen to serve not more than 15 years in the state penitentiary at Walla Walla.

The minimum time Clifford will serve will be set by the State Board of Prison Terms and Paroles.

Sentencing of Ralph Farrell, who won five battle stars while serving with the Army in Europe in the Second World War, was postponed to determine the recommendation of arresting officers toward giving him a deferral of sentence.

The burglars netted the pair about \$2,000. They also obtained \$5,000 worth of travelers checks, which they burned.

The average human being takes into his body about 250 gallons of water every year.

Rescue Ship Reaches Men On Bleak Isle

HALIFAX, N. S., Nov. 19.—(AP)—The British freighter Empire MacCalum reported today she had begun taking aboard survivors of the ship-wrecked freighter Langleecrag after their five-day ordeal of being marooned on bleak Saed Newfoundland.

The Empire MacCalum, one of four ships which plunged through heavy seas toward the island on rescue missions, reported she arrived at 1 a. m. and stood by until daylight to take aboard the crew members.

The Langleecrag also was a British ship. For five days the seamen—variously estimated at from 30 to 44 in number—were lashed by cold rain and buffeted by giant breakers while their radio operator sent out frantic messages that time was running out. One man was lost when the ship smashed on the shore reefs and broke in two early Saturday.

The average human being takes into his body about 250 gallons of water every year.

JESSIE'S Notebook by Jessie De Both

So They Won't Eat Vegetables! What Will They Eat? Anything Fried—you say despairingly. All right then. Fry their vegetables this way. Take 2 cups mashed cooked vegetables, 2 cups bread crumbs, 1 beaten egg, salt and pepper. Add margarine and milk to moisten; a touch of nutmeg, chopped parsley. Form into croquettes, roll in ¼ cup crumbs, fry in deep fat till brown. Serve hot with thick white sauce.

BACK-SEAT KITCHEN DRIVER MIGHT BE the youngsters. Might be the head man. One or all will tell you what they want! Spam! Lucky folks if you're stocked up on that wonderful blend of juicy pork shoulder and mouth-watering ham. That's Spam! It's best to have plenty on hand—and try this for a super-dish:

Spam, cut in inch cubes Pineapple—cubed Alternate Spam and pineapple cubes on skewers. Bake in shallow pan in moderate oven about 25-30 min. Turn. I can see you frying Spam with breakfast eggs. Or making he-man sandwiches or baking it whole for dinner.

SAVORY RICE CHEESE CASSEROLE HOT, HEARTY and full of nourishment is my savory casserole for meekless diners—rich in protein because of its cheese, rich in flavor if the cheese is Shefford Cereal. And for a bonus, prices on Shefford cereals are lower!

Melt 3 tsp. fat in heavy pan. Add ¼ cup chopped green pepper. Sauté 3 min. Stir in ¼ tsp. salt, ¼ tsp. pepper, 1 tsp. sugar, 1 cup cooked tomatoes, 3 cups cooked rice. Simmer 5 min. Place ½ mixture in greased casserole, cover with ½ pkg. sliced Shefford Cereal. Add remaining rice mixture. Cover with remaining ½ pkg. sliced cheese. Bake at 350° F. for 20 min.

EASY TO FIND ONE OF THE EASIEST things to discover in any self-respecting refrigerator is Libby's Tomato Juice. In quantity! Its rich flavor of vine-ripened tomatoes—its satisfying goodness have made it both well-known and well-loved. A family favorite. It's the only word for it! Like their seniors they love Libby's with any meal at any hour, any day. When they're hungry between meals give them Libby's Tomato Juice and:

Man-sized peanut butter sandwiches made with brown bread or big soda crackers. Keep several cans chilling at all times. You'll need them!

ORANGE-NUT DESSERT 1 envelope Minute Gelatine 1 Tbsp. sugar 2 c. orange juice 1 cup orange segments ½ cup chopped nuts Combine Minute Gelatine, sugar and juice in saucepan. Place over medium heat until gelatine is dissolved, stirring constantly about 2 or 3 minutes. Chill. When slightly thickened, fold in oranges and nuts. Mold. Chill till firm. Unmold. Serves 4 to 6.

YOU, TOO CAN HAVE LIGHTER, MORE DELICIOUS CAKES WITH SPRY!

Another fine product of Lever Brothers Company

THE WIRES ARE BUZZING WITH THE NEWS!

"MY CAKE'S SO MUCH LIGHTER!" "HOW MY FAMILY RAVED!" "COME OVER JUST BAKED THE BEST CAKE EVER!" "SO EASY TO MAKE!"

SENSATIONAL! TRY Spry with Cake-Improver!

Bake this Peerless Coconut Cake when company comes

YOU, TOO CAN HAVE LIGHTER, MORE DELICIOUS CAKES WITH SPRY!

For mighty good eating give the folks Rockwood Chocolate Bits as they come from the package.

A ROOM OF ONE'S OWN FOR every mother of a large family who longs for larger quarters, I know another mother who'd like fewer rooms and fewer walls to clean, even if she had to resort to triple-decker beds. If I had my way, I'd give everyone the priceless privacy of a room for himself with a large bottle of Boon Household Cleaner, made by the makers of Clorox for each person. Everyone would be responsible for keeping his own room free of finger-prints, and there would be weekly inspection of floors, walls and woodwork. I'd divide the doorknobs and light switches among the family, to keep those finger-prints areas polished. Mother would have her bottle of Boon for her kitchen linoleum, chromium appliances, all washable surfaces on which grease collects. Dad would have a bottle for washing his car. No one would have to complain of hard work for Boon wipes away dirt easily and quickly. And Mother would get such a boost from this help, that she'd have lots of time for planning family fun.

Rockwood Chocolate Bits. Combine 1 pkg. Rockwood Chocolate Bits with ½ cup sugar and ½ cup milk in a saucepan over low heat. Stir constantly until mixture boils. Then boil just 2 min., not stirring. Remove from heat. Add ½ tsp. vanilla. Cool but don't stir. When cool, beat until creamy and of spreading consistency. Spread on cup cakes. Or you can cut cup cakes in two, crosswise, and fill with frosting.

Settle for Cup Cakes Next time you wonder what to serve with ice cream or sherbet, settle for cup cakes. Make them by your pet recipe. But don't dream of having them plain when you can top them so lusciously with frosting easily made with Rockwood Semi-Sweet Chocolate Bits.

Life with Baby—Starring Father THERE'S A STAR part in "Life with Baby" for daddy, too. And he'll have fun playing it. So start early to let him do things for baby. For example, when Sonny's all set for his first solid food, let daddy tempt him with one of Gerber's three smooth-textured Cereals. Thousands of daddies and mommies find that babies go for good-tasting Gerber's Cereal Food, Strained Oatmeal and Barlet Cereal—right from the start. And they're likely to continue as "Cereal Fans" if given the variety that only Gerber's offer. Of course, Gerber's cereal trio has much more than flavor in its favor—for instance, added iron, calcium, B-complex vitamins—and convenience. Just add milk or formula, right in baby's dish. Certainly, daddy can do that!

Always Be Gay DON'T you love simple dishes that look as attractive as they are good to eat? Like when you make gay-looking, delicious desserts and salads with Speed-Up Minute Gelatine so quickly, all in 1 pan:

Advertisement for Spry Pure Vegetable Shortening with Cake-Improver. Includes a large image of a cake, a can of Spry, and a woman (Aunt Jenny) pointing to the product. Text describes the product's benefits for baking lighter, more delicious cakes.